

***** LIQUID SPILLS - VOLUME CALCULATIONS *****

Release Location Name: Ochoa Battery Date of Release: 7/31/2024

If the leak/spill is associated with production equipment, i.e. - wellhead, stuffing box, flowline, tank battery, production vessel, transfer pump, or storage tank place an "X" here: X

Input Data:

OIL:

WATER:

If spill volumes from measurement, i.e. metering, tank volumes, etc. are known enter the volumes here:

BBL

20.0000 BBL

If "known" spill volumes are given, input data for the following "Area Calculations" is optional. The above will override the calculated volumes.

Total Area Calculations						Standing Liquid Calculations							
Total Surface Area	width	length	wet soil depth	oil (%)	Standing Liquid Area	width	length	liquid depth	oil (%)				
Rectangle Area #1	27.00 ft	X	25.00 ft	X	0.00 in	0.00%	Rectangle Area #1	27.00 ft	X	25.00 ft	X	2.00 in	0.00%
Rectangle Area #2	0.00 ft	X	0.00 ft	X	0.00 in	0.00%	Rectangle Area #2	0.00 ft	X	0.00 ft	X	0.00 in	0.00%
Rectangle Area #3	0.00 ft	X	0.00 ft	X	0.00 in	0.00%	Rectangle Area #3	0.00 ft	X	0.00 ft	X	0.00 in	0.00%
Rectangle Area #4	0.00 ft	X	0.00 ft	X	0.00 in	0.00%	Rectangle Area #4	0.00 ft	X	0.00 ft	X	0.00 in	0.00%
Rectangle Area #5	0.00 ft	X	0.00 ft	X	0.00 in	0.00%	Rectangle Area #5	0.00 ft	X	0.00 ft	X	0.00 in	0.00%
Rectangle Area #6	0.00 ft	X	0.00 ft	X	0.00 in	0.00%	Rectangle Area #6	0.00 ft	X	0.00 ft	X	0.00 in	0.00%
Rectangle Area #7	0.00 ft	X	0.00 ft	X	0.00 in	0.00%	Rectangle Area #7	0.00 ft	X	0.00 ft	X	0.00 in	0.00%
Rectangle Area #8	0.00 ft	X	0.00 ft	X	0.00 in	0.00%	Rectangle Area #8	0.00 ft	X	0.00 ft	X	0.00 in	0.00%

production system leak - DAILY PRODUCTION DATA REQUIRED

Average Daily Production:

Oil

Water

BBL

BBL

Did leak occur before the separator?:

YES

X N/A (place an "X")

Amount of Free Liquid Recovered:

20 BBL

okay

Percentage of Oil in Free Liquid Recovered:

0.00%

(percentage)

Liquid holding factor *:

0.00 gal per gal

Use the following when the spill wets the grains of the soil.

Use the following when the liquid completely fills the pore space of the soil.

* sand = .08 gallon liquid per gallon volume of soil.

Occurs when the spill soaked soil is contained by barriers, natural (or not).

* gravelly (caliche) loam = .14 gallon liquid per gallon volume of soil.

* gravelly (caliche) loam = .25 gallon liquid per gallon volume of soil.

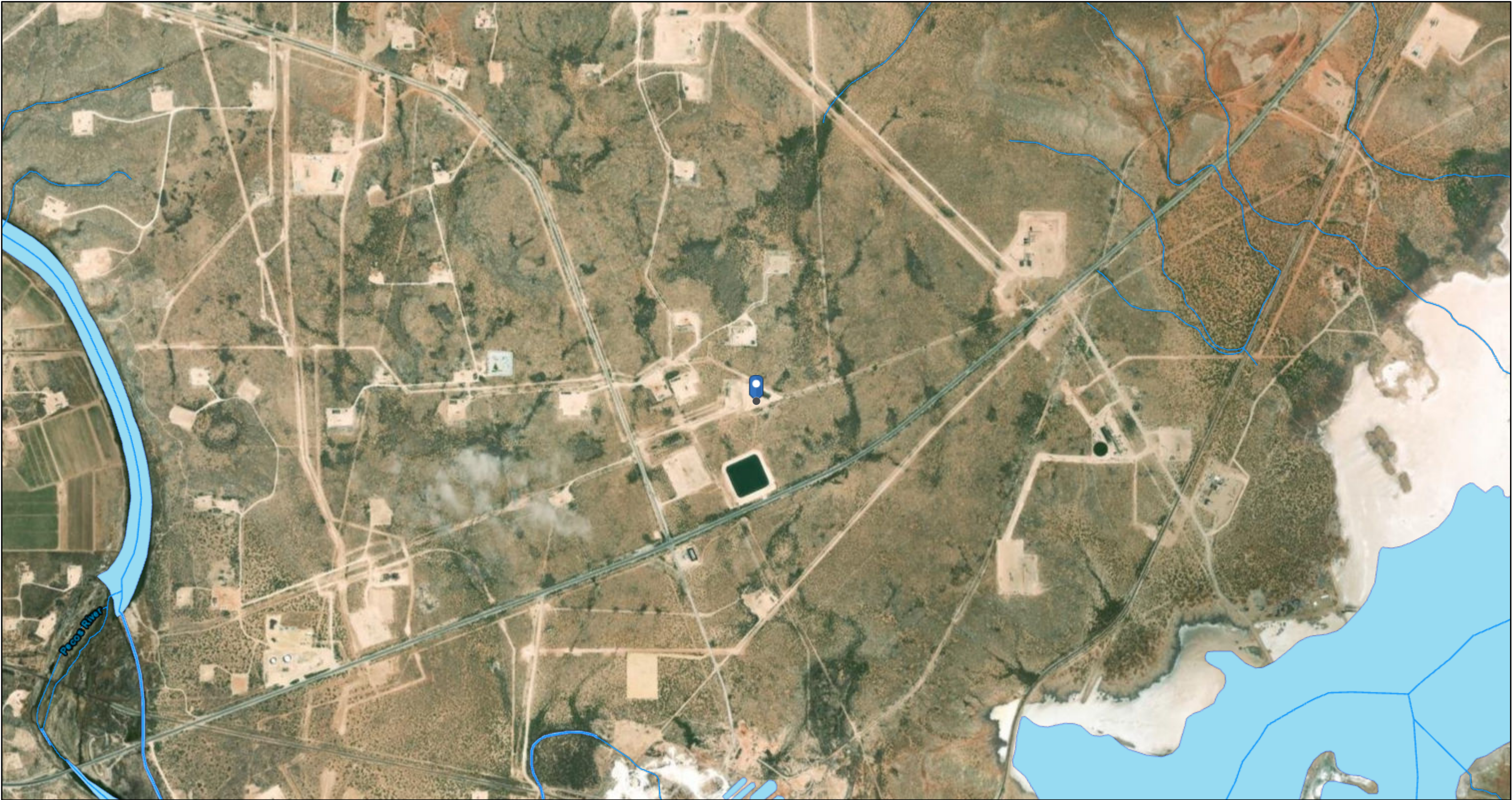
* sandy clay loam soil = .14 gallon liquid per gallon volume of soil.

* sandy loam = .5 gallon liquid per gallon volume of soil.

* clay loam = .16 gallon liquid per gallon volume of soil.

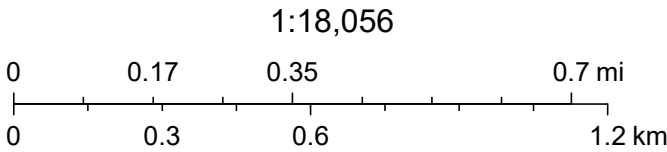
Saturated Soil Volume Calculations:			Free Liquid Volume Calculations:		
Total Solid/Liquid Volume:	H2O cu. ft.	OIL cu. ft.	Total Free Liquid Volume:	H2O cu. ft.	OIL cu. ft.
675 sq. ft.			675 sq. ft.	113 cu. ft.	
Estimated Volumes Spilled			Estimated Production Volumes Lost		
Liquid in Soil:	H2O 0.0 BBL	OIL 0.0 BBL	Estimated Production Spilled:	H2O 20.0 BBL	OIL 0.0 BBL
Free Liquid:	20.0 BBL	0.0 BBL	Estimated Surface Damage		
Totals:	20.0 BBL	0.0 BBL	Surface Area:	675 sq. ft.	
			Surface Area:	.0155 acre	
Total Spill Liquid:	20.0 BBL	0.0 BBL	Estimated Weights, and Volumes		
Recovered Volumes			Saturated Soil =	lbs	cu.ft.
Estimated oil recovered:	0.0 BBL	check - okay	Total Liquid =	20 BBL	840 gallon
Estimated water recovered:	20.0 BBL	check - okay			6,989 lbs

NM OCD - Waterbodies Map



7/31/2024, 10:43:24 AM

- OSW Water Bodys
- OSE Streams




Esri, HERE, Garmin, IPC, Maxar, NM OSE

Point of Diversion Summary

quarters are 1=NW 2=NE 3=SW 4=SE
quarters are smallest to largest

NAD83 UTM in meters

Well Tag	POD Nbr	Q64	Q16	Q4	Sec	Tws	Rng	X	Y	Map
NA	C 04418 POD1	SE	NE	NW	12	23S	28E	590103.6	3576851.2	

* UTM location was derived from PLSS - see Help

Driller License:	1789	Driller Company:	HRL COMPLIANCE SOLUTIONS, INC
Driller Name:	MARK MUMBY		
Drill Start Date:	2020-03-31	Drill Finish Date:	2020-03-31
		Plug Date:	2020-04-03
Log File Date:	2020-05-26	PCW Rcv Date:	
		Source:	
Pump Type:		Pipe Discharge Size:	
		Estimated Yield:	0
Casing Size:	2.00	Depth Well:	55
		Depth Water:	

Casing Perforations:


Top	Bottom
0	45
45	55

The data is furnished by the NMOSE/ISC and is accepted by the recipient with the expressed understanding that the OSE/ISC make no warranties, expressed or implied, concerning the accuracy, completeness, reliability, usability, or suitability for any particular purpose of the data.

Point of Diversion Summary

quarters are 1=NW 2=NE 3=SW 4=SE
quarters are smallest to largest

NAD83 UTM in meters

Well Tag	POD Nbr	Q64	Q16	Q4	Sec	Tws	Rng	X	Y	Map
NA	C 04539 POD1	NE	SE	NE	01	23S	28E	591034.4	3578223.2	

* UTM location was derived from PLSS - see Help

Driller License:	1186	Driller Company:	NOT FOR HIRE
Driller Name:	HAMMER, RODNEY S.WARDENER		
Drill Start Date:	2021-07-14	Drill Finish Date:	2021-07-14
Log File Date:	2021-10-05	PCW Rcv Date:	Source:
Pump Type:	Pipe Discharge Size:	Estimated Yield:	
Casing Size:	2.00	Depth Well:	55
		Depth Water:	

Casing Perforations:


Top	Bottom
45	55

The data is furnished by the NMOSE/ISC and is accepted by the recipient with the expressed understanding that the OSE/ISC make no warranties, expressed or implied, concerning the accuracy, completeness, reliability, usability, or suitability for any particular purpose of the data.

Point of Diversion Summary

quarters are 1=NW 2=NE 3=SW 4=SE
quarters are smallest to largest

NAD83 UTM in meters

Well Tag	POD Nbr	Q64	Q16	Q4	Sec	TwS	Rng	X	Y	Map
NA	C 04584 POD1	SW	NW	SE	12	23S	28E	590391.8	3576064.2	

* UTM location was derived from PLSS - see [Help](#)

Driller License:	1664	Driller Company:	CASCADE DRILLING, LP
Driller Name:	CAIN, SHAWN N.NJR.L.NER		
Drill Start Date:	2021-12-16	Drill Finish Date:	2021-12-17
Log File Date:	2022-05-19	PCW Rcv Date:	Source:
Pump Type:	Pipe Discharge Size:	Estimated Yield: 0	
Casing Size:	2.00	Depth Well:	63
		Depth Water:	

Casing Perforations:

Top	Bottom
47	62

The data is furnished by the NMOSE/ISC and is accepted by the recipient with the expressed understanding that the OSE/ISC make no warranties, expressed or implied, concerning the accuracy, completeness, reliability, usability, or suitability for any particular purpose of the data.



New Mexico Office of the State Engineer

Water Column/Average Depth to Water

(A CLW##### in the POD suffix indicates the POD has been replaced & no longer serves a water right file.)

(R=POD has been replaced, O=orphaned, C=the file is closed)

(quarters are smallest to largest)

(meters)

(In feet)

POD Number	Code	Sub basin	County	Q64	Q16	Q4	Sec	Tws	Range	X	Y	Map	Distance	Well Depth	Depth Water	Water Column
C 04470 POD1		CUB	ED	SW	NW	SW	07	23S	29E	591280.2	3576086.4		844			
C 04418 POD1		CUB	ED	SE	NE	NW	12	23S	28E	590103.6	3576851.2		1190	55		
C 04584 POD1		CUB	ED	SW	NW	SE	12	23S	28E	590391.8	3576064.2		1248	63		
C 04539 POD1		CUB	ED	NE	SE	NE	01	23S	28E	591034.4	3578223.2		1317	55		

Average Depth to Water: 0 feet

Minimum Depth: 0 feet

Maximum Depth: 0 feet

Record Count: 4

UTM Filters (in meters):

Easting: 591290.96

Northing: 3576930.82

Radius: 001600

* UTM location was derived from PLSS - see Help

The data is furnished by the NMOSE/ISC and is accepted by the recipient with the expressed understanding that the OSE/ISC make no warranties, expressed or implied, concerning the accuracy, completeness, reliability, usability, or suitability for any particular purpose of the data.

District I
1625 N. French Dr., Hobbs, NM 88240
Phone:(575) 393-6161 Fax:(575) 393-0720
District II
811 S. First St., Artesia, NM 88210
Phone:(575) 748-1283 Fax:(575) 748-9720
District III
1000 Rio Brazos Rd., Aztec, NM 87410
Phone:(505) 334-6178 Fax:(505) 334-6170
District IV
1220 S. St Francis Dr., Santa Fe, NM 87505
Phone:(505) 476-3470 Fax:(505) 476-3462

State of New Mexico
Energy, Minerals and Natural Resources
Oil Conservation Division
1220 S. St Francis Dr.
Santa Fe, NM 87505

QUESTIONS

Action 368923

QUESTIONS

Operator: BTA OIL PRODUCERS, LLC 104 S Pecos Midland, TX 79701	OGRID: 260297
	Action Number: 368923
	Action Type: [C-141] Initial C-141 (C-141-v-Initial)

QUESTIONS

Prerequisites	
Incident ID (n#)	nAPP2421335621
Incident Name	NAPP2421335621 OCHOA CTB @ 0
Incident Type	Produced Water Release
Incident Status	Initial C-141 Received
Incident Facility	[fAPP2135654952] Ochoa

Location of Release Source	
Please answer all the questions in this group.	
Site Name	Ochoa CTB
Date Release Discovered	07/31/2024
Surface Owner	Federal

Incident Details	
Please answer all the questions in this group.	
Incident Type	Produced Water Release
Did this release result in a fire or is the result of a fire	No
Did this release result in any injuries	No
Has this release reached or does it have a reasonable probability of reaching a watercourse	No
Has this release endangered or does it have a reasonable probability of endangering public health	No
Has this release substantially damaged or will it substantially damage property or the environment	No
Is this release of a volume that is or may with reasonable probability be detrimental to fresh water	No

Nature and Volume of Release	
Material(s) released, please answer all that apply below. Any calculations or specific justifications for the volumes provided should be attached to the follow-up C-141 submission.	
Crude Oil Released (bbls) Details	Not answered.
Produced Water Released (bbls) Details	Cause: Equipment Failure Tank (Any) Produced Water Released: 20 BBL Recovered: 20 BBL Lost: 0 BBL.
Is the concentration of chloride in the produced water >10,000 mg/l	Yes
Condensate Released (bbls) Details	Not answered.
Natural Gas Vented (Mcf) Details	Not answered.
Natural Gas Flared (Mcf) Details	Not answered.
Other Released Details	Not answered.
Are there additional details for the questions above (i.e. any answer containing Other, Specify, Unknown, and/or Fire, or any negative lost amounts)	On July 31, 2024, BTA operations discovered an approximately 1/4-inch hole in a produced water storage tank that resulted in a release of approximately 20 bbls of produced water into the tank battery lined secondary containment structure. Initial response emptied the tank and recovered the the full amount of released produced water from within the lined secondary containment structure.

District I

1625 N. French Dr., Hobbs, NM 88240
Phone:(575) 393-6161 Fax:(575) 393-0720

District II

811 S. First St., Artesia, NM 88210
Phone:(575) 748-1283 Fax:(575) 748-9720

District III

1000 Rio Brazos Rd., Aztec, NM 87410
Phone:(505) 334-6178 Fax:(505) 334-6170

District IV

1220 S. St Francis Dr., Santa Fe, NM 87505
Phone:(505) 476-3470 Fax:(505) 476-3462

State of New Mexico
Energy, Minerals and Natural Resources
Oil Conservation Division
1220 S. St Francis Dr.
Santa Fe, NM 87505

QUESTIONS, Page 2

Action 368923

QUESTIONS (continued)

Operator: BTA OIL PRODUCERS, LLC 104 S Pecos Midland, TX 79701	OGRID: 260297
	Action Number: 368923
	Action Type: [C-141] Initial C-141 (C-141-v-Initial)

QUESTIONS

Nature and Volume of Release (continued)	
Is this a gas only submission (i.e. only significant Mcf values reported)	No, according to supplied volumes this does not appear to be a "gas only" report.
Was this a major release as defined by Subsection A of 19.15.29.7 NMAC	No
Reasons why this would be considered a submission for a notification of a major release	Unavailable.
With the implementation of the 19.15.27 NMAC (05/25/2021), venting and/or flaring of natural gas (i.e. gas only) are to be submitted on the C-129 form.	

Initial Response

The responsible party must undertake the following actions immediately unless they could create a safety hazard that would result in injury.

The source of the release has been stopped	True
The impacted area has been secured to protect human health and the environment	True
Released materials have been contained via the use of berms or dikes, absorbent pads, or other containment devices	True
All free liquids and recoverable materials have been removed and managed appropriately	True
If all the actions described above have not been undertaken, explain why	Not answered.

Per Paragraph (4) of Subsection B of 19.15.29.8 NMAC the responsible party may commence remediation immediately after discovery of a release. If remediation has begun, please prepare and attach a narrative of actions to date in the follow-up C-141 submission. If remedial efforts have been successfully completed or if the release occurred within a lined containment area (see Subparagraph (a) of Paragraph (5) of Subsection A of 19.15.29.11 NMAC), please prepare and attach all information needed for closure evaluation in the follow-up C-141 submission.

I hereby certify that the information given above is true and complete to the best of my knowledge and understand that pursuant to OCD rules and regulations all operators are required to report and/or file certain release notifications and perform corrective actions for releases which may endanger public health or the environment. The acceptance of a C-141 report by the OCD does not relieve the operator of liability should their operations have failed to adequately investigate and remediate contamination that pose a threat to groundwater, surface water, human health or the environment. In addition, OCD acceptance of a C-141 report does not relieve the operator of responsibility for compliance with any other federal, state, or local laws and/or regulations.

I hereby agree and sign off to the above statement	Name: Chuck Terhune Title: Program Manager Email: chuck.terhune@tetrattech.com Date: 07/31/2024
--	--

District I

1625 N. French Dr., Hobbs, NM 88240
Phone:(575) 393-6161 Fax:(575) 393-0720

District II

811 S. First St., Artesia, NM 88210
Phone:(575) 748-1283 Fax:(575) 748-9720

District III

1000 Rio Brazos Rd., Aztec, NM 87410
Phone:(505) 334-6178 Fax:(505) 334-6170

District IV

1220 S. St Francis Dr., Santa Fe, NM 87505
Phone:(505) 476-3470 Fax:(505) 476-3462

State of New Mexico
Energy, Minerals and Natural Resources
Oil Conservation Division
1220 S. St Francis Dr.
Santa Fe, NM 87505

QUESTIONS, Page 3

Action 368923

QUESTIONS (continued)

Operator: BTA OIL PRODUCERS, LLC 104 S Pecos Midland, TX 79701	OGRID: 260297
	Action Number: 368923
	Action Type: [C-141] Initial C-141 (C-141-v-Initial)

QUESTIONS**Site Characterization**

Please answer all the questions in this group (only required when seeking remediation plan approval and beyond). This information must be provided to the appropriate district office no later than 90 days after the release discovery date.

What is the shallowest depth to groundwater beneath the area affected by the release in feet below ground surface (ft bgs)	Between 51 and 75 (ft.)
What method was used to determine the depth to ground water	NM OSE iWaters Database Search
Did this release impact groundwater or surface water	No
What is the minimum distance, between the closest lateral extents of the release and the following surface areas:	
A continuously flowing watercourse or any other significant watercourse	Between ½ and 1 (mi.)
Any lakebed, sinkhole, or playa lake (measured from the ordinary high-water mark)	Between 1000 (ft.) and ½ (mi.)
An occupied permanent residence, school, hospital, institution, or church	Between 1 and 5 (mi.)
A spring or a private domestic fresh water well used by less than five households for domestic or stock watering purposes	Between 1 and 5 (mi.)
Any other fresh water well or spring	Between 1 and 5 (mi.)
Incorporated municipal boundaries or a defined municipal fresh water well field	Between 1 and 5 (mi.)
A wetland	Between 1000 (ft.) and ½ (mi.)
A subsurface mine	Greater than 5 (mi.)
An (non-karst) unstable area	Greater than 5 (mi.)
Categorize the risk of this well / site being in a karst geology	Medium
A 100-year floodplain	Between 500 and 1000 (ft.)
Did the release impact areas not on an exploration, development, production, or storage site	No

Remediation Plan

Please answer all the questions that apply or are indicated. This information must be provided to the appropriate district office no later than 90 days after the release discovery date.

Requesting a remediation plan approval with this submission	No
The OCD recognizes that proposed remediation measures may have to be minimally adjusted in accordance with the physical realities encountered during remediation. If the responsible party has any need to significantly deviate from the remediation plan proposed, then it should consult with the division to determine if another remediation plan submission is required.	

District I
1625 N. French Dr., Hobbs, NM 88240
Phone:(575) 393-6161 Fax:(575) 393-0720

District II
811 S. First St., Artesia, NM 88210
Phone:(575) 748-1283 Fax:(575) 748-9720

District III
1000 Rio Brazos Rd., Aztec, NM 87410
Phone:(505) 334-6178 Fax:(505) 334-6170

District IV
1220 S. St Francis Dr., Santa Fe, NM 87505
Phone:(505) 476-3470 Fax:(505) 476-3462

State of New Mexico
Energy, Minerals and Natural Resources
Oil Conservation Division
1220 S. St Francis Dr.
Santa Fe, NM 87505

CONDITIONS

Action 368923

CONDITIONS

Operator: BTA OIL PRODUCERS, LLC 104 S Pecos Midland, TX 79701	OGRID: 260297
	Action Number: 368923
	Action Type: [C-141] Initial C-141 (C-141-v-Initial)

CONDITIONS

Created By	Condition	Condition Date
rhamlet	None	7/31/2024