



August 21, 2024

District Supervisor
Oil Conservation Division, District 1
1625 North French Drive
Hobbs, New Mexico 88240

**Re: Site Assessment Report and Closure Request
Maverick Permian, LLC
East Vacuum (GSA) Unit #004
Unit Letter I, Section 32, Township 17 South, Range 35 East
Lea County, New Mexico
Incident ID# nSAP0335630157**

Dear Sir or Madam,

Tetra Tech, Inc. (Tetra Tech) was contracted by Maverick Permian, LLC (Maverick) to assess and remediate a release that occurred from an internal corrosion of a flowline associated with the East Vacuum (GSA) Unit #008. The release footprint is located in Public Land Survey System (PLSS) Unit Letter I, Section 32, Township 17 South, Range 35 East, in Lea County, New Mexico (Site). The approximate release point occurred at coordinates 32.7896118°, -103.4734192° as shown in **Figure 1** and **Figure 2**.

BACKGROUND

According to the State of New Mexico Oil Conservation Division (NMOCD) C-141 Initial Report, the release was discovered on October 30, 2003. The C-141 reports that the release occurred due to a flowline leak leading to a 40-barrel (bbl) of oil and a 5 bbl spill of produced water. Approximately 35 bbl of crude oil and 3 bbl of produced water were reported as recovered during the initial response. The NMOCD received the Initial C-141 on December 22, 2003, and subsequently assigned the release Incident ID nPRS0335630157. The C-141 submission narrative states the following:

"replaced 5 jnts of flowline with new external coated line."

The initial C-141 Release Notification form submitted in 2003 is unavailable on the NMOCD Permitting portal.

SITE CHARACTERIZATION

Tetra Tech performed a Site characterization that included the identification of sensitive receptors, a depth to groundwater determination, and assessment of site soils. Site Characterization data are included in **Attachment 1**

Site Characterization Summary

Shallowest depth to groundwater beneath the area affected by the release	Greater than 55 feet bgs
Method used to determine the depth to groundwater	Estimate
Did this release impact groundwater or surface water?	No
The minimum distance between the closest lateral extents of the release and the following surface areas:	
A continuously flowing watercourse or any other significant watercourse	Greater than 5 miles
Any lakebed, sinkhole, or playa lake	Between 1000 ft and ½ mi.
An occupied permanent residence, school, hospital, institution, or church	Greater than 5 mi.

Tetra Tech, Inc.

1500 CityWest Boulevard, Suite 1000, Houston, Texas 77042

Tel +1.832.251.5160 | tetratech.com/oga | tetratech.com

Site Assessment Report and Closure Request
Maverick Permian, LLC
East Vacuum (GSA) Unit #004
Incident ID# nSAP0335630157

August 21, 2024

Site Characterization Summary

A spring or private domestic freshwater well used by less than five households for domestic or stock watering purposes	Between 0.5 mi and 1 mi.
Any other freshwater well or spring	Between 0.5 mi and 1 mi.
Incorporated municipal boundaries or a defined municipal freshwater well field	Greater than 5 mi.
A wetland	Between 1000 ft and ½ mi.
A subsurface mine	Greater than 5 mi.
A (non-karst) unstable area	Greater than 5 mi.
Categorized risk of this well / site being in a karst geology	Low
A 100-year floodplain	Greater than 5 mi.
Did the release impact areas not on an exploration, development, production, or storage site?	No

Receptors

Tetra Tech identified no watercourses, sinkholes, residences, schools, hospitals, institutions, churches, springs, private domestic water wells, playa lakes, wetlands, incorporated municipal boundaries, subsurface mines, or floodplains within the distances specified in 19.15.29 New Mexico Administrative Code (NMAC). According to the NMOCD Oil and Gas Map online, the Site has low karst potential.

Depth to Groundwater

According to the New Mexico Office of State Engineer's (NMOSE) Reporting System, there are two (2) water wells within ½ mile of the Site with the shallowest depth to groundwater of 85 feet below ground surface (bgs), however, the available depth to water measurements are greater than 25 years old.

Soils

According to the United States Department of Agriculture (USDA) Natural Resources Conservation Service (NRCS), the Site is mapped as Kimbrough-Lea complex, dry, 0 to 3 percent slopes. The soil at the site includes shallow topsoil down to 10 inches consisting of gravelly loam and loam underlain by cemented, low transmissivity, petrocalcic material. The published typical profile for this soil type includes the following:

- Gravelly Loam from 0 to 3 inches;
- Loam from 3 to 10 inches; and
- Cemented Material from 10 to 80 inches.

REGULATORY FRAMEWORK

Based upon the release footprint location and in accordance with Subsection E of 19.15.29.12 NMAC, per 19.15.29.11 NMAC, the site characterization data was used to determine recommended remedial action levels (RRALs) for Benzene, Toluene, Ethylbenzene, and Xylenes (BTEX), Total Petroleum Hydrocarbons (TPH), and chloride in soil.

Site Assessment Report and Closure Request
Maverick Permian, LLC
East Vacuum (GSA) Unit #004
Incident ID# nSAP0335630157

August 21, 2024

Based on the proven depth to water and distances to potential receptors, and in accordance with Table I of 19.15.29.12 NMAC, the following remediation RRALs for the Site are the default Reclamation Requirements for groundwater that cannot be sufficiently proven to be greater than 50 feet bgs:

Reclamation Requirements

Constituent	Remediation RRAL
Chloride	600 mg/kg
TPH (GRO+DRO+ORO)	100 mg/kg
BTEX	50 mg/kg
Benzene	10 mg/kg

SITE ASSESSMENT

Historic Aerial Review

Tetra Tech reviewed the site's available Google Earth historical aerial images, from before the recorded release date to the most currently available images, including images from 1996, 2002, 2005, 2009, 2011, 2012, 2014, 2017, 2019, and 2023. The aerial images did not show evidence of the release related to incident nSAP0335630157. **Attachment 2** provides the reviewed historical aerial images of the Site.

Sampling Notification

Based on the historical aerial review, the release age, and the initial C-141 release narrative, Maverick believes that the release Site may meet remediation closure standards during delineation activities and desires to use the delineation samples for remediation closure.

The New Mexico Energy, minerals, and Natural Resources Department (EMNRD) Notice: *Process Updates Re: Submission of Form C-141 Release Notification and Corrective Actions*, dated December 1, 2023, states the below under the Frequently Asked Questions VIII. Remediation Closure Sampling Notice & Liner Inspection Notices:

"If a responsible party determines the release site may meet remediation closure standards during delineation activities and wish to use those samples for remediation closure, the responsible party must provide proper two (2) business day notice to the OCD pursuant to 19.15.29.12 NMAC."

Therefore, on June 15, 2024, Tetra Tech submitted the Assessment Sampling C-141N Notification of Sampling Application to the NMOCD for sampling on June 17, 2024.

Assessment Sampling Plan

To assess the historical incident at the Site, where no visible evidence in desktop aerial reviews or site inspections for the nSAP0335630157 was evident, Tetra Tech developed a sampling plan to cover an 800-square-foot area around the reported release coordinates. The plan included four (4) sampling locations, with two soil samples collected from each location. The four sample locations were selected to ensure each sample represented a 200-square-foot area near the reported release location at the given sampling depth.

Site Assessment Report and Closure Request
Maverick Permian, LLC
East Vacuum (GSA) Unit #004
Incident ID# nSAP0335630157

August 21, 2024

Site Assessment Sampling

On June 17, 2024, Tetra Tech personnel mobilized to the Site to conduct soil sampling near the reported release coordinates to eliminate the location as potentially impacted and validate the initial C-141 form release narrative that the release occurred on the well pad. A total of four (4) hand auger borings were installed to determine if impacts were present in the vicinity of the reported release location. Hand auger borings (BH-1 through BH-4) were installed at the reported release location and within the surrounding area covering a total of 800 square feet centered on the reported release location coordinates. Hand auger borings were advanced to 2.5 feet bgs where hand auger refusal was encountered. Assessment sampling locations and depths were selected to identify any impacts near the reported release coordinates vertically and horizontally. Soil Assessment boring locations are detailed in **Table 1** and depicted in **Figure 2**. Photographs of the Site are provided in **Attachment 3**.

Assessment Sampling Results

Table 2 summarizes laboratory analytical results from the June 24, 2024, soil sampling event. The laboratory reported concentrations of BTEX, TPH, and chloride were reported as less than the Reclamation Requirements in samples submitted from locations BH-1, BH-2, BH-3, and BH-4. The laboratory analytical data package is provided in **Attachment 4**.

CONCLUSION

Based on the historical review and Site Assessment sampling, no BTEX, TPH, or chloride impacts from the historic release were identified at the Site. Based on the published soil profile identifying shallow low transmissivity lithified material encountered by Tetra Tech at approximately 2.5 feet bgs, it is unlikely that deeper impacts would be present that would not be present within the shallower higher permeability material at the Site. Therefore, No Site remediation is required, and Maverick requests closure of Incident nSAP0335630157. Reclamation and revegetation of the well pad will be conducted at the end of the life of the East Vacuum (GSA) Unit #004 well is complete. If you have any questions concerning the Site's remediation activities, please email Charles Terhune at Chuck.Terhune@tetrattech.com or by phone at (832) 252-2093.

Sincerely,



Chris Straub
Project Manager
Tetra Tech, Inc.



Charles H. Terhune IV, P.G.
Program Manager
Tetra Tech, Inc.

cc: Bryce Wagoner, Maverick Permian, LLC
New Mexico State Land Office

Site Assessment Report and Closure Request
Maverick Permian, LLC
East Vacuum (GSA) Unit #004
Incident ID# nSAP0335630157

August 21, 2024

LIST OF ATTACHMENTS

Figures

Figure 1 – Site Location Topographic Map

Figure 2 – Site Assessment Locations and Reported Release Location Map

Tables

Table 1 – Soil Assessment Locations

Table 2 – Summary of Analytical Results – Soil Assessment Sampling

Attachments

Attachment 1 – Site Characterization Data

Attachment 2 – Historical Aerial Images

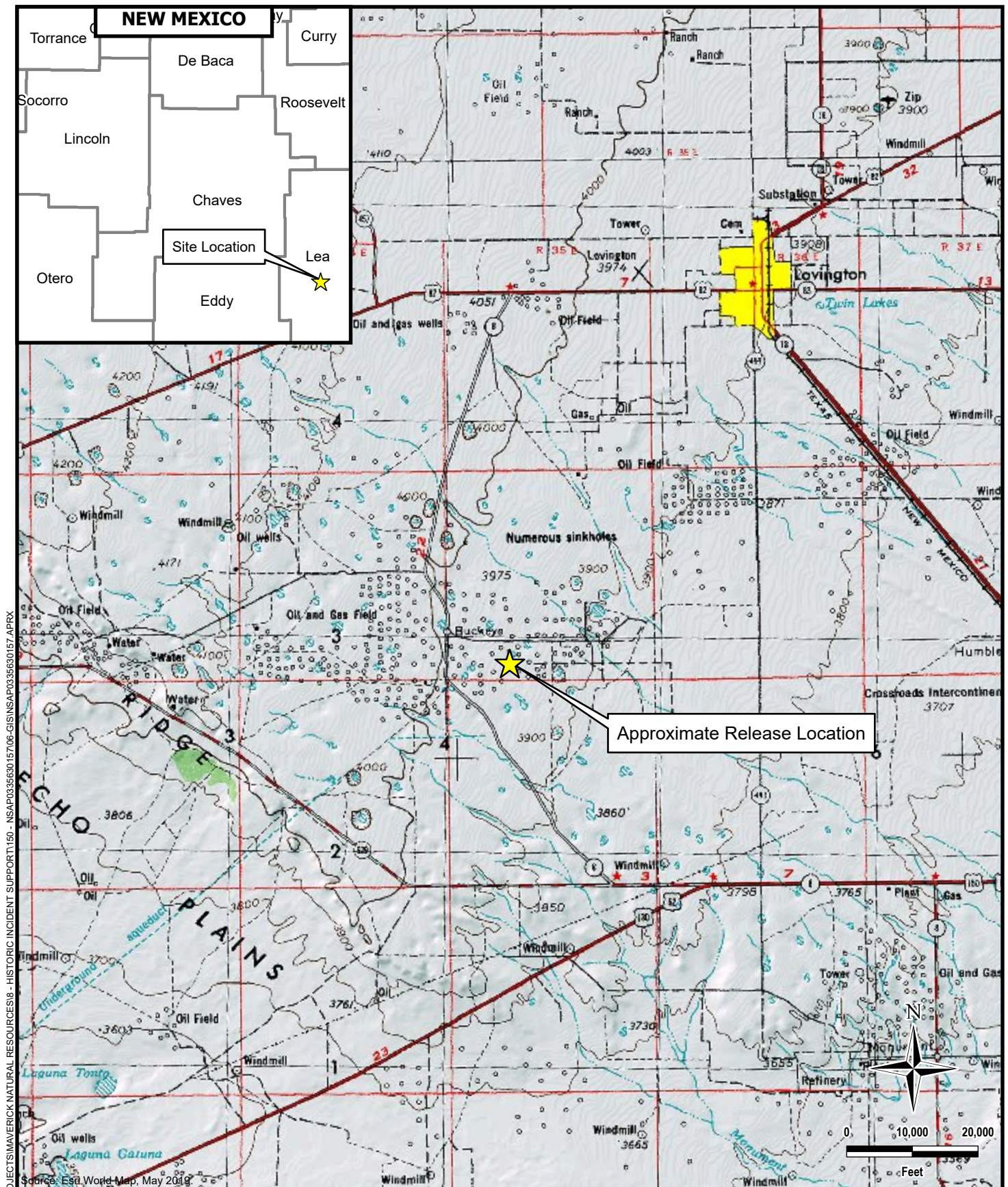
Attachment 3 – Photographic Documentation

Attachment 4 – Laboratory Analytical Reports

Site Assessment Report and Closure Request
Maverick Permian, LLC
East Vacuum (GSA) Unit #004
Incident ID# nSAP0335630157

August 21, 2024

FIGURES



DOCUMENT PATH: S:\NEW PROJECTS\MAVERICK NATURAL RESOURCES\8 - HISTORIC INCIDENT SUPPORT\150 - NSAP0335630157\06-GIS\NSAP0335630157.APRX

MAVERICK
NATURAL RESOURCES



OVERVIEW MAP
nSAP0335630157
EAST VACUUM (GSA) UNIT #004

(32.789612°, -103.473419°)
LEA COUNTY, NEW MEXICO

Figure No.

1

PROJECT NO.: 212C-MD-03514

DATE: 7/23/2024

DESIGNED BY: ACP

DOCUMENT PATH: S:\NEW PROJECTS\MAVERICK NATURAL RESOURCES\8 - HISTORIC INCIDENT SUPPORT\150 - NSAP0335630157\06-GIS\NSAP0335630157.APRX



Source: Esri World Map, May 2019.



SITE DETAIL MAP
nSAPO335630157
EAST VACUUM (GSA) UNIT # 004
(32.789612°, -103.473419°)
LEA COUNTY, NEW MEXICO

Figure No.

2

PROJECT NO.: 212C-MD-03514

DATE: 7/23/2024

DESIGNED BY: ACP

Site Assessment Report and Closure Request
Maverick Permian, LLC
East Vacuum (GSA) Unit #004
Incident ID# nSAP0335630157

August 21, 2024

TABLES



TABLE 1
SOIL ASSESSMENT LOCATIONS
INCIDENT ID nSAP0335630157
MAVERICK PERMIAN, LLC
EAST VACUUM (GSA) UNIT #004
LEA COUNTY, NEW MEXICO

Boring ID	Date	Latitude	Longitude
BH-01	6/17/2024	32.789601	-103.473413
BH-02	6/17/2024	32.789633	-103.473410
BH-03	6/17/2024	32.789582	-103.473443
BH-04	6/17/2024	32.789595	-103.473376

TABLE 2
SUMMARY OF ANALYTICAL RESULTS
SHALLOW SOIL CONFIRMATION SAMPLING - INCIDENT IDS nSAP0335630157
MAVERICK PERMIAN, LLC
EAST VACUUM (GSA) UNIT #004
LEA COUNTY, NEW MEXICO

Sample ID	Sample Date	Sample Depth	Chloride ¹		BTEX ²										TPH ³							
					Benzene		Toluene		Ethylbenzene		Total Xylenes		Total BTEX		GRO		DRO		EXT DRO		Total TPH (GRO+DRO+EXT DRO)	
		C ₆ - C ₁₀		> C ₁₀ - C ₂₈		> C ₂₈ - C ₃₆		mg/kg	Q	mg/kg	Q	mg/kg	Q	mg/kg	Q	mg/kg	Q	mg/kg	Q	mg/kg		Q
feet bgs			mg/kg	Q	mg/kg	Q	mg/kg	Q	mg/kg	Q	mg/kg	Q	mg/kg	Q	mg/kg	Q	mg/kg	Q	mg/kg	Q	mg/kg	Q
Reclamation Requirements (19.15.29 NMAC)			600		10								50		10						100	
BH - 1 (0-0.5')	6/17/2024	0 - 0.5	32		<0.050		<0.050		<0.050		<0.150		<0.300		<10.0		<10.0		<10.0		<30	
BH - 1 (2-2.5')	6/17/2024	2 - 2.5	<16		<0.050		<0.050		<0.050		<0.150		<0.300		<10.0		<10.0		<10.0		<30	
BH - 2 (0-0.5')	6/17/2024	0 - 0.5	64		<0.050		<0.050		<0.050		<0.150		<0.300		<10.0		<10.0		<10.0		<30	
BH - 2 (2-2.5')	6/17/2024	2 - 2.5	16		<0.050		<0.050		<0.050		<0.150		<0.300		<10.0		<10.0		<10.0		<30	
BH - 3 (0-0.5')	6/17/2024	0 - 0.5	<16		<0.050		<0.050		<0.050		<0.150		<0.300		<10.0		<10.0		<10.0		<30	
BH - 3 (2-2.5')	6/17/2024	2 - 2.5	16		<0.050		<0.050		<0.050		<0.150		<0.300		<10.0		<10.0		<10.0		<30	
BH - 4 (0-0.5')	6/17/2024	0 - 0.5	<16		<0.050		<0.050		<0.050		<0.150		<0.300		<10.0		<10.0		<10.0		<30	
BH - 4 (2-2.5')	6/17/2024	2 - 2.5	32		<0.050		<0.050		<0.050		<0.150		<0.300		<10.0		<10.0		<10.0		<30	

NOTES:

bgs: Below ground surface
mg/kg: Milligrams per kilogram
TPH: Total Petroleum Hydrocarbons
GRO: Gasoline Range Organics
DRO: Diesel Range Organics
ORO: Oil Range Organics

1: Method SM4500Cl-B
2: Method 8021B
3: Method 8015M

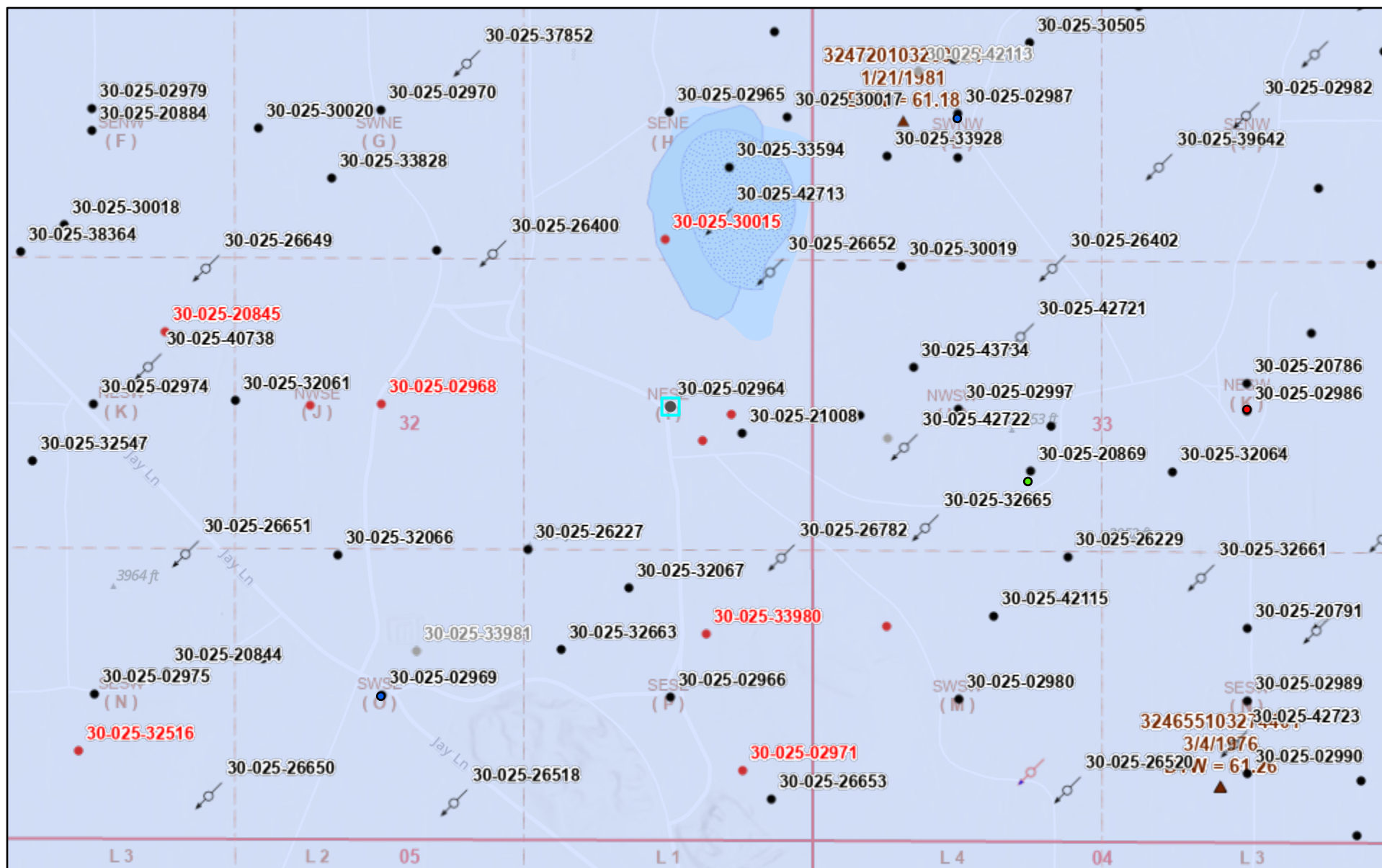
Bold and highlighted values indicate exceedance of Reclamation Requirements (19.15.29 NMAC).
Areas where samples wwere collected were then overexcavated to achieve clean margins

Site Assessment Report and Closure Request
Maverick Permian, LLC
East Vacuum (GSA) Unit #004
Incident ID# nSAP0335630157

August 21, 2024

ATTACHMENT 1 – SITE CHARACTERIZATION DATA

OCD Well Locations

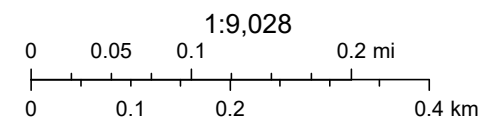


6/27/2024, 2:52:13 PM

OSE Water PODs Wells - Large Scale

- Active
- Pending
- Plugged
- ↗ Injection, Active
- ↘ Injection, Cancelled
- Injection, Plugged
- Oil, Active
- Oil, Cancelled

- Oil, Plugged
- ▲ USGS Historical GW Wells
- Low Karst Occurrence Potential
- OSW Water Bodies
- OSE Probable Playas
- PLSS Second Division
- PLSS First Division



BLM, OCD, New Mexico Tech, Esri, NASA, NGA, USGS, FEMA, Oil Conservation Division of the New Mexico Energy, Minerals and Natural

New Mexico Oil Conservation Division

NM OCD Oil and Gas Map. <http://nm-ernrd.maps.arcgis.com/apps/webappviewer/index.html?id=4d017f2306164de29fd2fb9f8f35ca75>: New Mexico Oil Conservation Division



New Mexico Office of the State Engineer

Water Column/Average Depth to Water

(A CLW##### in the POD suffix indicates the POD has been replaced & no longer serves a water right file.)

(R=POD has been replaced, O=orphaned, C=the file is closed)

(quarters are 1=NW 2=NE 3=SW 4=SE)

(quarters are smallest to largest)

(NAD83 UTM in meters)

(In feet)

POD Number	POD Sub-Code	basin	County	Q 64	Q 16	Q 4	Sec	Tws	Rng	X	Y	Distance	Depth Well	Depth Water	Water Column
L 04829 S5	L	LE		3	1	33	17S	35E		643347	3629400*	567	220	90	130
L 04829 S	L	LE		3	4	32	17S	35E		642554	3628586*	569	198	85	113

Average Depth to Water: **87 feet**

Minimum Depth: **85 feet**

Maximum Depth: **90 feet**

Record Count: 2

UTMNAD83 Radius Search (in meters):

Easting (X): 642953

Northing (Y): 3628991.992

Radius: 800

*UTM location was derived from PLSS - see Help

The data is furnished by the NMOSE/ISC and is accepted by the recipient with the expressed understanding that the OSE/ISC make no warranties, expressed or implied, concerning the accuracy, completeness, reliability, usability, or suitability for any particular purpose of the data.

6/27/24 1:49 PM

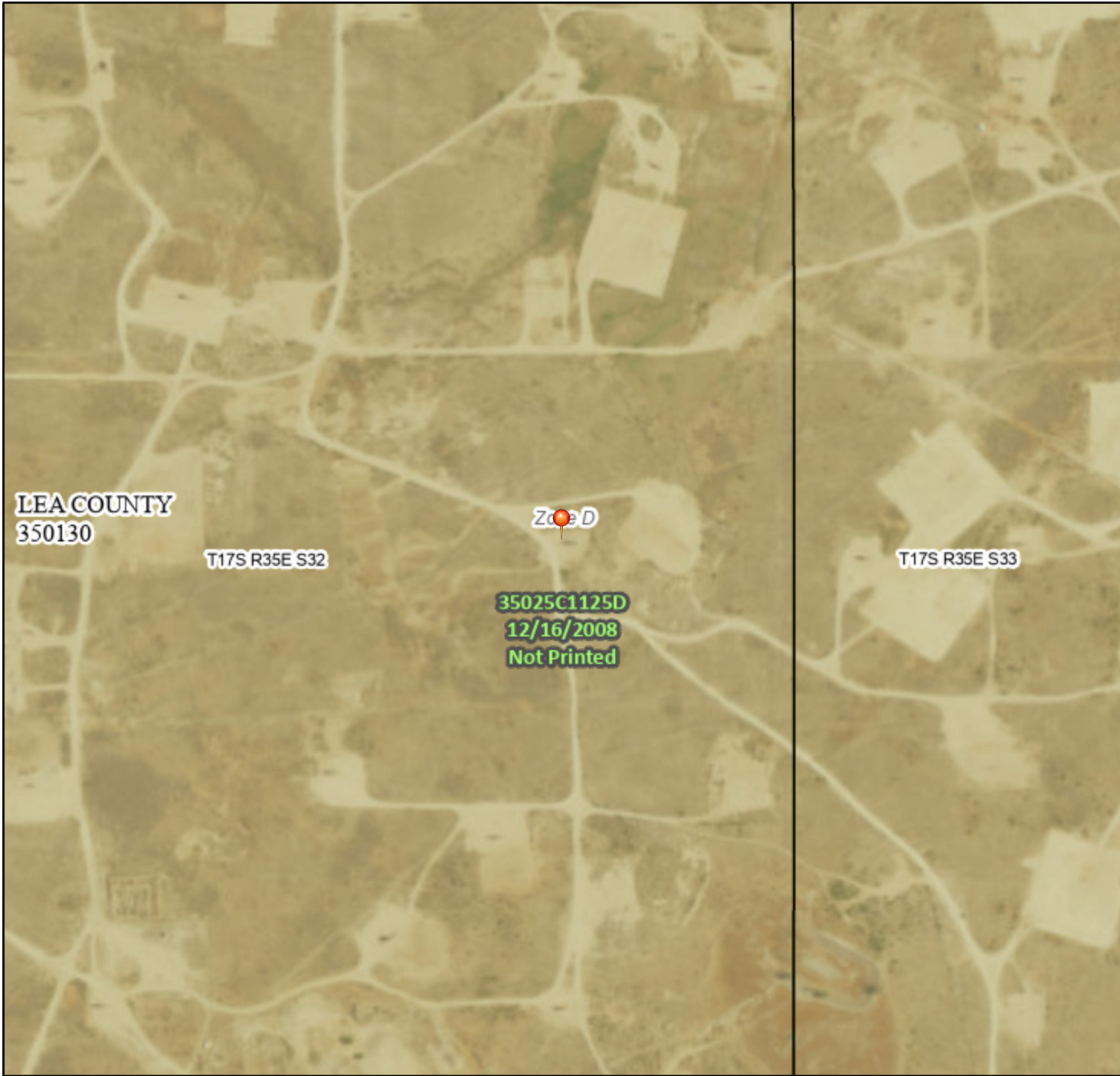
Page 1 of 1

WATER COLUMN/ AVERAGE
DEPTH TO WATER

National Flood Hazard Layer FIRMette



103°28'43"W 32°47'38"N



0 250 500 1,000 1,500 2,000 Feet

1:6,000

103°28'6"W 32°47'7"N

Released to Imaging: 9/23/2024 9:37:56 AM

Basemap Imagery Source: USGS National Map 2023

Legend

SEE FIS REPORT FOR DETAILED LEGEND AND INDEX MAP FOR FIRM PANEL LAYOUT

SPECIAL FLOOD HAZARD AREAS		Without Base Flood Elevation (BFE) Zone A, V, A99
		With BFE or Depth Zone AE, AO, AH, VE, AR
		Regulatory Floodway
OTHER AREAS OF FLOOD HAZARD		0.2% Annual Chance Flood Hazard, Areas of 1% annual chance flood with average depth less than one foot or with drainage areas of less than one square mile Zone X
		Future Conditions 1% Annual Chance Flood Hazard Zone X
		Area with Reduced Flood Risk due to Levee. See Notes. Zone X
		Area with Flood Risk due to Levee Zone D
OTHER AREAS		NO SCREEN Area of Minimal Flood Hazard Zone X
		Effective LOMRs
		Area of Undetermined Flood Hazard Zone D
GENERAL STRUCTURES		Channel, Culvert, or Storm Sewer
		Levee, Dike, or Floodwall
OTHER FEATURES		20.2 Cross Sections with 1% Annual Chance Water Surface Elevation
		17.5 Cross Sections with 1% Annual Chance Water Surface Elevation
		Coastal Transect
		Base Flood Elevation Line (BFE)
		Limit of Study
		Jurisdiction Boundary
		Coastal Transect Baseline
MAP PANELS		Digital Data Available
		No Digital Data Available
		Unmapped



The pin displayed on the map is an approximate point selected by the user and does not represent an authoritative property location.

This map complies with FEMA's standards for the use of digital flood maps if it is not void as described below. The basemap shown complies with FEMA's basemap accuracy standards

The flood hazard information is derived directly from the authoritative NFHL web services provided by FEMA. This map was exported on 6/7/2024 at 2:27 PM and does not reflect changes or amendments subsequent to this date and time. The NFHL and effective information may change or become superseded by new data over time.

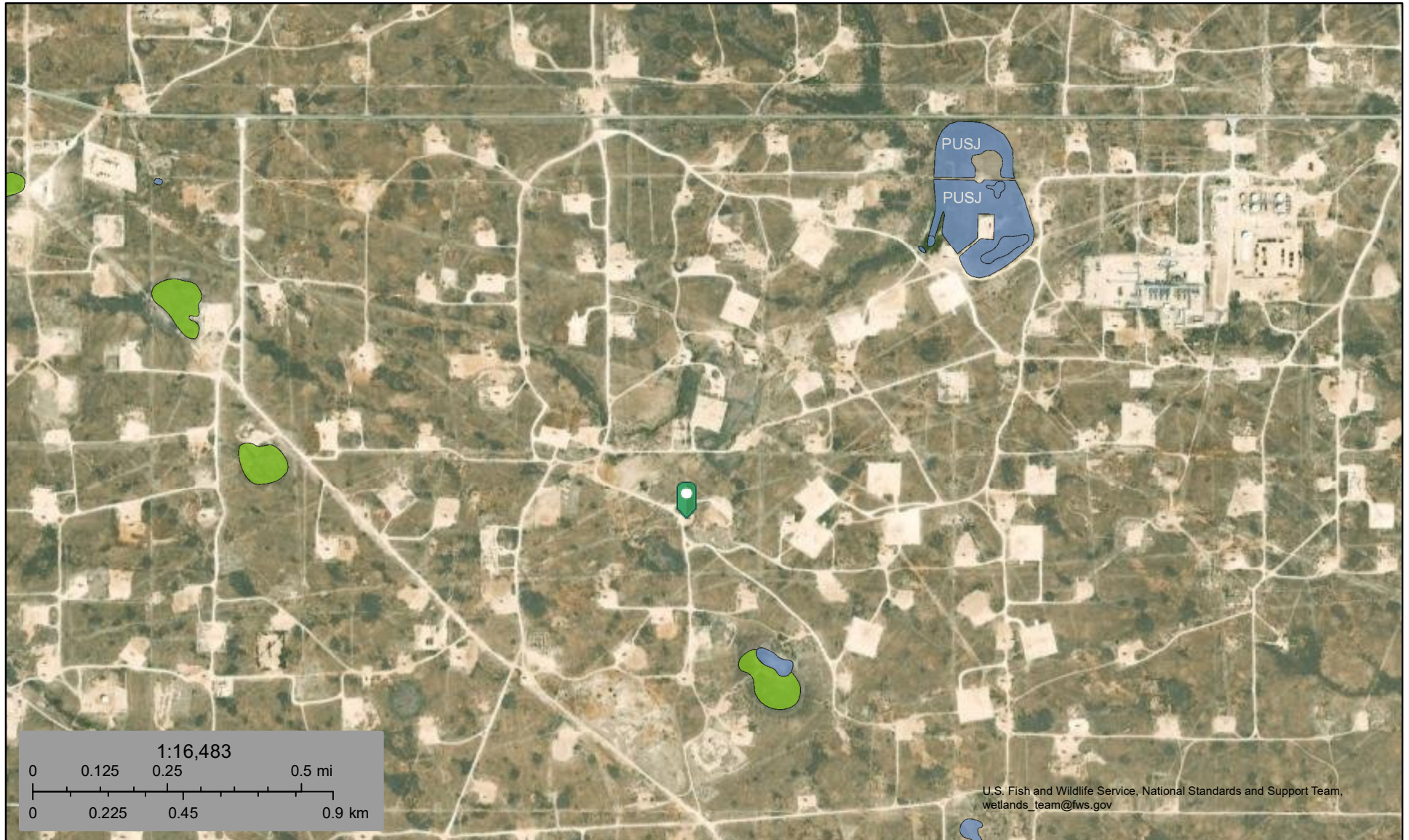
This map image is void if the one or more of the following map elements do not appear: basemap imagery, flood zone labels, legend, scale bar, map creation date, community identifiers, FIRM panel number, and FIRM effective date. Map images for unmapped and unmodernized areas cannot be used for regulatory purposes.



U.S. Fish and Wildlife Service

National Wetlands Inventory

EAST VACUUM (GSA) UNIT #004 - nSAPC



June 7, 2024

Wetlands

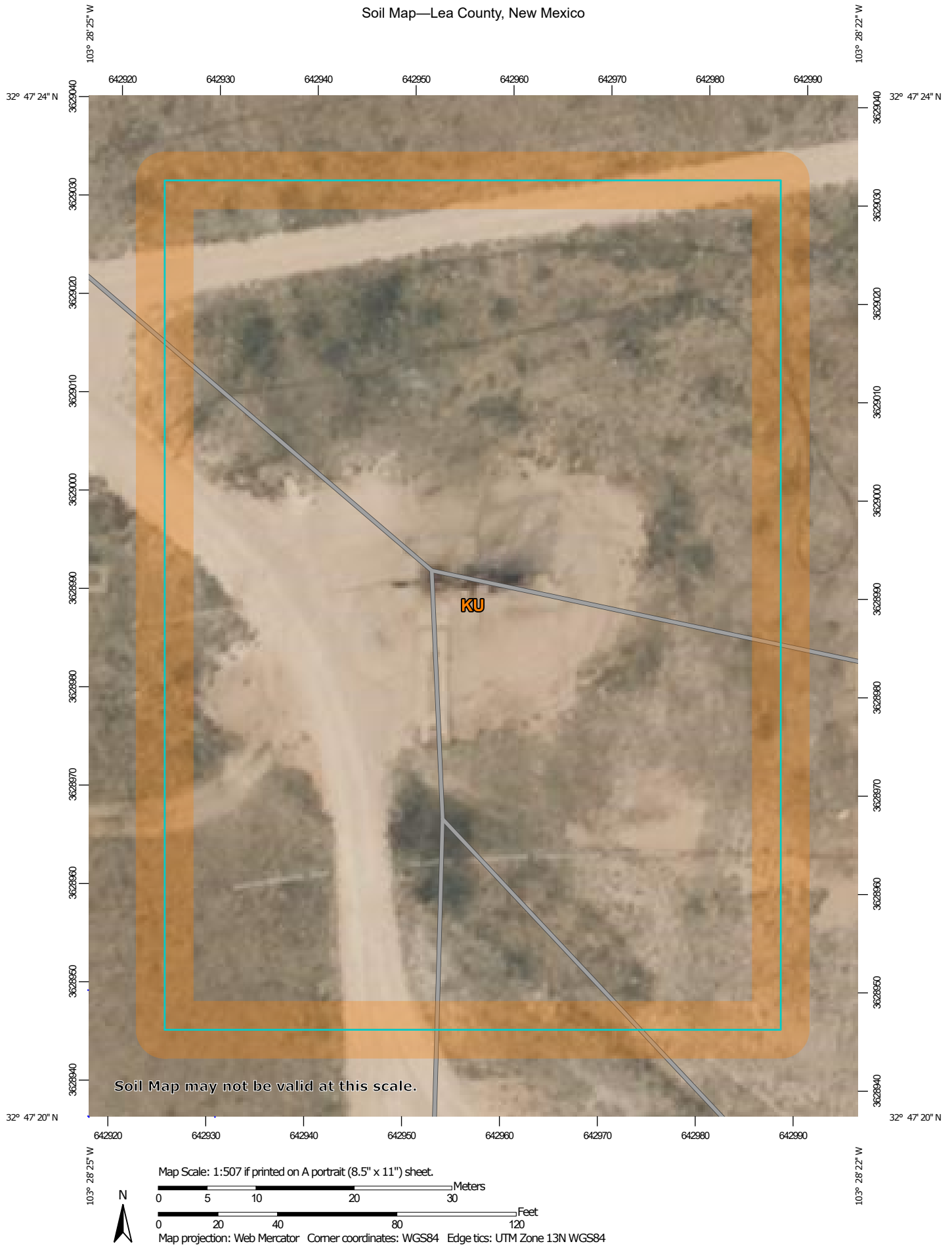
- Estuarine and Marine Deepwater
- Estuarine and Marine Wetland

- Freshwater Emergent Wetland
- Freshwater Forested/Shrub Wetland
- Freshwater Pond

- Lake
- Other
- Riverine

This map is for general reference only. The US Fish and Wildlife Service is not responsible for the accuracy or currentness of the base data shown on this map. All wetlands related data should be used in accordance with the layer metadata found on the Wetlands Mapper web site.

Soil Map—Lea County, New Mexico



Natural Resources
Conservation Service

Web Soil Survey
National Cooperative Soil Survey

8/19/2024
Page 1 of 3

Soil Map—Lea County, New Mexico

MAP LEGEND

Area of Interest (AOI)

 Area of Interest (AOI)

Soils

 Soil Map Unit Polygons

 Soil Map Unit Lines

 Soil Map Unit Points

Special Point Features



Blowout



Borrow Pit



Clay Spot



Closed Depression



Gravel Pit



Gravelly Spot



Landfill



Lava Flow



Marsh or swamp



Mine or Quarry



Miscellaneous Water



Perennial Water



Rock Outcrop



Saline Spot



Sandy Spot



Severely Eroded Spot



Sinkhole



Slide or Slip



Sodic Spot



Spoil Area



Stony Spot



Very Stony Spot



Wet Spot



Other



Special Line Features

Water Features



Streams and Canals

Transportation



Rails



Interstate Highways



US Routes



Major Roads



Local Roads

Background



Aerial Photography

MAP INFORMATION

The soil surveys that comprise your AOI were mapped at 1:20,000.

Warning: Soil Map may not be valid at this scale.

Enlargement of maps beyond the scale of mapping can cause misunderstanding of the detail of mapping and accuracy of soil line placement. The maps do not show the small areas of contrasting soils that could have been shown at a more detailed scale.

Please rely on the bar scale on each map sheet for map measurements.

Source of Map: Natural Resources Conservation Service

Web Soil Survey URL:

Coordinate System: Web Mercator (EPSG:3857)

Maps from the Web Soil Survey are based on the Web Mercator projection, which preserves direction and shape but distorts distance and area. A projection that preserves area, such as the Albers equal-area conic projection, should be used if more accurate calculations of distance or area are required.

This product is generated from the USDA-NRCS certified data as of the version date(s) listed below.

Soil Survey Area: Lea County, New Mexico

Survey Area Data: Version 20, Sep 6, 2023

Soil map units are labeled (as space allows) for map scales 1:50,000 or larger.

Date(s) aerial images were photographed: Feb 7, 2020—May 12, 2020

The orthophoto or other base map on which the soil lines were compiled and digitized probably differs from the background imagery displayed on these maps. As a result, some minor shifting of map unit boundaries may be evident.

Map Unit Legend

Map Unit Symbol	Map Unit Name	Acres in AOI	Percent of AOI
KU	Kimbrough-Lea complex, dry, 0 to 3 percent slopes	1.3	100.0%
Totals for Area of Interest		1.3	100.0%

Map Unit Description: Kimbrough-Lea complex, dry, 0 to 3 percent slopes---Lea County, New Mexico

Lea County, New Mexico

KU—Kimbrough-Lea complex, dry, 0 to 3 percent slopes

Map Unit Setting

National map unit symbol: 2tw46

Elevation: 2,500 to 4,800 feet

Mean annual precipitation: 14 to 16 inches

Mean annual air temperature: 57 to 63 degrees F

Frost-free period: 180 to 220 days

Farmland classification: Not prime farmland

Map Unit Composition

Kimbrough and similar soils: 45 percent

Lea and similar soils: 25 percent

Minor components: 30 percent

Estimates are based on observations, descriptions, and transects of the mapunit.

Description of Kimbrough

Setting

Landform: Playa rims, plains

Down-slope shape: Convex, linear

Across-slope shape: Concave, linear

Parent material: Loamy eolian deposits derived from sedimentary rock

Typical profile

A - 0 to 3 inches: gravelly loam

Bw - 3 to 10 inches: loam

Bkkm1 - 10 to 16 inches: cemented material

Bkkm2 - 16 to 80 inches: cemented material

Properties and qualities

Slope: 0 to 3 percent

Depth to restrictive feature: 4 to 18 inches to petrocalcic

Drainage class: Well drained

Runoff class: Very high

Capacity of the most limiting layer to transmit water (Ksat): Very low to moderately low (0.00 to 0.01 in/hr)

Depth to water table: More than 80 inches

Frequency of flooding: None

Frequency of ponding: None

Calcium carbonate, maximum content: 95 percent

Maximum salinity: Nonsaline to very slightly saline (0.0 to 2.0 mmhos/cm)

Sodium adsorption ratio, maximum: 1.0

Available water supply, 0 to 60 inches: Very low (about 1.4 inches)

Interpretive groups

Land capability classification (irrigated): None specified

Map Unit Description: Kimbrough-Lea complex, dry, 0 to 3 percent slopes---Lea County, New Mexico

Land capability classification (nonirrigated): 7s
Hydrologic Soil Group: D
Ecological site: R077DY049TX - Very Shallow 12-17" PZ
Hydric soil rating: No

Description of Lea

Setting

Landform: Plains
Down-slope shape: Convex
Across-slope shape: Linear
Parent material: Calcareous, loamy eolian deposits from the blackwater draw formation of pleistocene age over indurated caliche of pliocene age

Typical profile

A - 0 to 10 inches: loam
Bk - 10 to 18 inches: loam
Bkk - 18 to 26 inches: gravelly fine sandy loam
Bkkm - 26 to 80 inches: cemented material

Properties and qualities

Slope: 0 to 3 percent
Depth to restrictive feature: 22 to 30 inches to petrocalcic
Drainage class: Well drained
Runoff class: High
Capacity of the most limiting layer to transmit water (Ksat): Very low to moderately low (0.00 to 0.06 in/hr)
Depth to water table: More than 80 inches
Frequency of flooding: None
Frequency of ponding: None
Calcium carbonate, maximum content: 90 percent
Maximum salinity: Nonsaline to very slightly saline (0.0 to 2.0 mmhos/cm)
Sodium adsorption ratio, maximum: 3.0
Available water supply, 0 to 60 inches: Very low (about 2.9 inches)

Interpretive groups

Land capability classification (irrigated): None specified
Land capability classification (nonirrigated): 7s
Hydrologic Soil Group: D
Ecological site: R077DY047TX - Sandy Loam 12-17" PZ
Hydric soil rating: No

Minor Components

Kenhill

Percent of map unit: 12 percent
Landform: Plains
Down-slope shape: Linear
Across-slope shape: Linear
Ecological site: R077DY038TX - Clay Loam 12-17" PZ
Hydric soil rating: No

Map Unit Description: Kimbrough-Lea complex, dry, 0 to 3 percent slopes---Lea County, New Mexico

Douro

Percent of map unit: 12 percent

Landform: Plains

Down-slope shape: Linear

Across-slope shape: Linear

Ecological site: R077DY047TX - Sandy Loam 12-17" PZ

Other vegetative classification: Unnamed (G077DH000TX)

Hydric soil rating: No

Spraberry

Percent of map unit: 6 percent

Landform: Playa rims, plains

Down-slope shape: Convex, linear

Across-slope shape: Linear

Ecological site: R077DY049TX - Very Shallow 12-17" PZ

Other vegetative classification: Unnamed (G077DH000TX)

Hydric soil rating: No

Data Source Information

Soil Survey Area: Lea County, New Mexico

Survey Area Data: Version 20, Sep 6, 2023

Site Assessment Report and Closure Request
Maverick Permian, LLC
East Vacuum (GSA) Unit #004
Incident ID# nSAP0335630157

August 21, 2024

ATTACHMENT 2 – HISTORICAL AERIAL IMAGES

nSAP0335630157

EAST VACUUM (GSA) UNIT #004

Historical Aerial Image

1985


nSAP0335630157 Release Location 

Image Landsat / Copernicus

nSAP0335630157

EAST VACUUM (GSA) UNIT #004

Historical Aerial Image

1996


nSAP0335630157Release Location 

Image U.S. Geological Survey

nSAP0335630157

EAST VACUUM (GSA) UNIT #004

Historical Aerial Image

2002

nSAP0335630157 Release Location



Image © 2024 Maxar Technologies

nSAP0335630157

EAST VACUUM (GSA) UNIT #004

Historical Aerial Image

2005

nSAP0335630157 Release Location



Image NMRGIS

nSAP0335630157

EAST VACUUM (GSA) UNIT #004

Historical Aerial Image

2009


nSAP0335630157 Release Location 

Image USDA/FPAC/GEO

nSAP0335630157

EAST VACUUM (GSA) UNIT #004

Historical Aerial Image

2011


nSAP0335630157Release Location 

Image USDA/FPAC/GEO

nSAP0335630157

EAST VACUUM (GSA) UNIT #004

Historical Aerial Image

2012

nSAP0335630157 Release Location



nSAP0335630157

EAST VACUUM (GSA) UNIT #004

Historical Aerial Image

2014

nSAP0335630157 Release Location



nSAP0335630157

EAST VACUUM (GSA) UNIT #004

Historical Aerial Image

Feb 2017

nSAP0335630157 Release Location



nSAP0335630157

EAST VACUUM (GSA) UNIT #004

Historical Aerial Image

Nov 2017

nSAP0335630157 Release Location



nSAP0335630157

EAST VACUUM (GSA) UNIT #004

Historical Aerial Image

2019

nSAP0335630157 Release Location



Image © 2024 CNES / Airbus

nSAP0335630157

EAST VACUUM (GSA) UNIT #004

Historical Aerial Image

2023

nSAP0335630157 Release Location



Image © 2024 Airbus

Site Assessment Report and Closure Request
Maverick Permian, LLC
East Vacuum (GSA) Unit #004
Incident ID# nSAP0335630157

August 21, 2024

ATTACHMENT 3 – PHOTOGRAPHIC DOCUMENTATION

W NW N NE
270 300 330 0 30 60

☀ 345°N (T) ☉ 32°47'35"N, 103°28'55"W ±9ft ▲ 3976ft

EAST VACUUM GRAYBURG-SAN ANDRES UNIT
MAVERICK NATURAL RESOURCES
Maverick Permian, LLC
(432) 309-7440
TRACT 3 2 3 6
SE NW SEC.32 - T17S R35E
LEA COUNTY, NEW MEXICO 004



☀ 90°E (T) ● 32°47'22"N, 103°28'24"W ±13ft ▲ 3961ft

EAST VACUUM (GSA) UNIT #004

Released to Imaging: 9/23/2024 9:57:56 AM

Maverick Permian
17 Jun 2024, 10:17:35

Site Assessment Report and Closure Request
Maverick Permian, LLC
East Vacuum (GSA) Unit #004
Incident ID# nSAP0335630157

August 21, 2024

ATTACHMENT 4 – LABORATORY ANALYTICAL DATA



PHONE (575) 393-2326 ° 101 E. MARLAND ° HOBBS, NM 88240

June 24, 2024

CHUCK TERHUNE

TETRA TECH

901 WEST WALL STREET , STE 100

MIDLAND, TX 79701

RE: EAST VACUUM (GSA) UNIT #004

Enclosed are the results of analyses for samples received by the laboratory on 06/18/24 9:10.

Cardinal Laboratories is accredited through Texas NELAP under certificate number TX-C24-00112. Accreditation applies to drinking water, non-potable water and solid and chemical materials. All accredited analytes are denoted by an asterisk (*). For a complete list of accredited analytes and matrices visit the TCEQ website at www.tceq.texas.gov/field/qa/lab_accred_certif.html.

Cardinal Laboratories is accredited through the State of Colorado Department of Public Health and Environment for:

Method EPA 552.2	Haloacetic Acids (HAA-5)
Method EPA 524.2	Total Trihalomethanes (TTHM)
Method EPA 524.4	Regulated VOCs (V1, V2, V3)

Accreditation applies to public drinking water matrices.

This report meets NELAP requirements and is made up of a cover page, analytical results, and a copy of the original chain-of-custody. If you have any questions concerning this report, please feel free to contact me.

Sincerely,

A handwritten signature in black ink that reads "Celey D. Keene".

Celey D. Keene

Lab Director/Quality Manager



PHONE (575) 393-2326 ° 101 E. MARLAND ° HOBBS, NM 88240

Analytical Results For:

TETRA TECH
 CHUCK TERHUNE
 901 WEST WALL STREET , STE 100
 MIDLAND TX, 79701
 Fax To: (432) 682-3946

Received:	06/18/2024	Sampling Date:	06/17/2024
Reported:	06/24/2024	Sampling Type:	Soil
Project Name:	EAST VACUUM (GSA) UNIT #004	Sampling Condition:	Cool & Intact
Project Number:	nSAP0335630157	Sample Received By:	Tamara Oldaker
Project Location:	LEA COUNTY		

Sample ID: BH - 1 (0-0.5') (H243520-01)

BTEX 8021B			mg/kg		Analyzed By: JH				
Analyte	Result	Reporting Limit	Analyzed	Method Blank	BS	% Recovery	True Value QC	RPD	Qualifier
Benzene*	<0.050	0.050	06/20/2024	ND	1.81	90.3	2.00	10.2	
Toluene*	<0.050	0.050	06/20/2024	ND	1.83	91.3	2.00	9.74	
Ethylbenzene*	<0.050	0.050	06/20/2024	ND	1.73	86.6	2.00	10.3	
Total Xylenes*	<0.150	0.150	06/20/2024	ND	5.37	89.5	6.00	9.96	
Total BTEX	<0.300	0.300	06/20/2024	ND					

Surrogate: 4-Bromofluorobenzene (PID) 99.0 % 71.5-134

Chloride, SM4500Cl-B			mg/kg		Analyzed By: HM				
Analyte	Result	Reporting Limit	Analyzed	Method Blank	BS	% Recovery	True Value QC	RPD	Qualifier
Chloride	32.0	16.0	06/19/2024	ND	432	108	400	0.00	

TPH 8015M			mg/kg		Analyzed By: MS				
Analyte	Result	Reporting Limit	Analyzed	Method Blank	BS	% Recovery	True Value QC	RPD	Qualifier
GRO C6-C10*	<10.0	10.0	06/19/2024	ND	204	102	200	0.226	
DRO >C10-C28*	<10.0	10.0	06/19/2024	ND	199	99.4	200	1.84	
EXT DRO >C28-C36	<10.0	10.0	06/19/2024	ND					

Surrogate: 1-Chlorooctane 53.9 % 48.2-134

Surrogate: 1-Chlorooctadecane 58.0 % 49.1-148

Cardinal Laboratories

*=Accredited Analyte

PLEASE NOTE: Liability and Damages. Cardinal's liability and client's exclusive remedy for any claim arising, whether based in contract or tort, shall be limited to the amount paid by client for analyses. All claims, including those for negligence and any other cause whatsoever shall be deemed waived unless made in writing and received by Cardinal within thirty (30) days after completion of the applicable service. In no event shall Cardinal be liable for incidental or consequential damages, including, without limitation, business interruptions, loss of use, or loss of profits incurred by client, its subsidiaries, affiliates or successors arising out of or related to the performance of the services hereunder by Cardinal, regardless of whether such claim is based upon any of the above stated reasons or otherwise. Results relate only to the samples identified above. This report shall not be reproduced except in full with written approval of Cardinal Laboratories.

Celey D. Keene, Lab Director/Quality Manager



PHONE (575) 393-2326 ° 101 E. MARLAND ° HOBBS, NM 88240

Analytical Results For:

TETRA TECH
 CHUCK TERHUNE
 901 WEST WALL STREET , STE 100
 MIDLAND TX, 79701
 Fax To: (432) 682-3946

Received:	06/18/2024	Sampling Date:	06/17/2024
Reported:	06/24/2024	Sampling Type:	Soil
Project Name:	EAST VACUUM (GSA) UNIT #004	Sampling Condition:	Cool & Intact
Project Number:	nSAP0335630157	Sample Received By:	Tamara Oldaker
Project Location:	LEA COUNTY		

Sample ID: BH - 1 (2-2.5') (H243520-02)

BTEX 8021B		mg/kg		Analyzed By: JH						
Analyte	Result	Reporting Limit	Analyzed	Method Blank	BS	% Recovery	True Value QC	RPD	Qualifier	
Benzene*	<0.050	0.050	06/20/2024	ND	1.81	90.3	2.00	10.2		
Toluene*	<0.050	0.050	06/20/2024	ND	1.83	91.3	2.00	9.74		
Ethylbenzene*	<0.050	0.050	06/20/2024	ND	1.73	86.6	2.00	10.3		
Total Xylenes*	<0.150	0.150	06/20/2024	ND	5.37	89.5	6.00	9.96		
Total BTEX	<0.300	0.300	06/20/2024	ND						

Surrogate: 4-Bromofluorobenzene (PID) 99.0 % 71.5-134

Chloride, SM4500CI-B		mg/kg		Analyzed By: HM						
Analyte	Result	Reporting Limit	Analyzed	Method Blank	BS	% Recovery	True Value QC	RPD	Qualifier	
Chloride	<16.0	16.0	06/19/2024	ND	432	108	400	0.00		

TPH 8015M		mg/kg		Analyzed By: MS					
Analyte	Result	Reporting Limit	Analyzed	Method Blank	BS	% Recovery	True Value QC	RPD	Qualifier
GRO C6-C10*	<10.0	10.0	06/19/2024	ND	204	102	200	0.226	
DRO >C10-C28*	<10.0	10.0	06/19/2024	ND	199	99.4	200	1.84	
EXT DRO >C28-C36	<10.0	10.0	06/19/2024	ND					

Surrogate: 1-Chlorooctane 77.3 % 48.2-134

Surrogate: 1-Chlorooctadecane 91.7 % 49.1-148

Cardinal Laboratories

*=Accredited Analyte

PLEASE NOTE: Liability and Damages. Cardinal's liability and client's exclusive remedy for any claim arising, whether based in contract or tort, shall be limited to the amount paid by client for analyses. All claims, including those for negligence and any other cause whatsoever shall be deemed waived unless made in writing and received by Cardinal within thirty (30) days after completion of the applicable service. In no event shall Cardinal be liable for incidental or consequential damages, including, without limitation, business interruptions, loss of use, or loss of profits incurred by client, its subsidiaries, affiliates or successors arising out of or related to the performance of the services hereunder by Cardinal, regardless of whether such claim is based upon any of the above stated reasons or otherwise. Results relate only to the samples identified above. This report shall not be reproduced except in full with written approval of Cardinal Laboratories.

Celey D. Keene, Lab Director/Quality Manager



PHONE (575) 393-2326 ° 101 E. MARLAND ° HOBBS, NM 88240

Analytical Results For:

TETRA TECH
 CHUCK TERHUNE
 901 WEST WALL STREET , STE 100
 MIDLAND TX, 79701
 Fax To: (432) 682-3946

Received:	06/18/2024	Sampling Date:	06/17/2024
Reported:	06/24/2024	Sampling Type:	Soil
Project Name:	EAST VACUUM (GSA) UNIT #004	Sampling Condition:	Cool & Intact
Project Number:	nSAP0335630157	Sample Received By:	Tamara Oldaker
Project Location:	LEA COUNTY		

Sample ID: BH - 2 (0-0.5') (H243520-03)

BTEX 8021B		mg/kg		Analyzed By: JH					
Analyte	Result	Reporting Limit	Analyzed	Method Blank	BS	% Recovery	True Value QC	RPD	Qualifier
Benzene*	<0.050	0.050	06/20/2024	ND	1.81	90.3	2.00	10.2	
Toluene*	<0.050	0.050	06/20/2024	ND	1.83	91.3	2.00	9.74	
Ethylbenzene*	<0.050	0.050	06/20/2024	ND	1.73	86.6	2.00	10.3	
Total Xylenes*	<0.150	0.150	06/20/2024	ND	5.37	89.5	6.00	9.96	
Total BTEX	<0.300	0.300	06/20/2024	ND					

Surrogate: 4-Bromofluorobenzene (PID) 98.7 % 71.5-134

Chloride, SM4500Cl-B		mg/kg		Analyzed By: HM					
Analyte	Result	Reporting Limit	Analyzed	Method Blank	BS	% Recovery	True Value QC	RPD	Qualifier
Chloride	64.0	16.0	06/19/2024	ND	432	108	400	0.00	

TPH 8015M		mg/kg		Analyzed By: MS					
Analyte	Result	Reporting Limit	Analyzed	Method Blank	BS	% Recovery	True Value QC	RPD	Qualifier
GRO C6-C10*	<10.0	10.0	06/19/2024	ND	204	102	200	0.226	
DRO >C10-C28*	<10.0	10.0	06/19/2024	ND	199	99.4	200	1.84	
EXT DRO >C28-C36	<10.0	10.0	06/19/2024	ND					

Surrogate: 1-Chlorooctane 84.6 % 48.2-134

Surrogate: 1-Chlorooctadecane 101 % 49.1-148

Cardinal Laboratories

*=Accredited Analyte

PLEASE NOTE: Liability and Damages. Cardinal's liability and client's exclusive remedy for any claim arising, whether based in contract or tort, shall be limited to the amount paid by client for analyses. All claims, including those for negligence and any other cause whatsoever shall be deemed waived unless made in writing and received by Cardinal within thirty (30) days after completion of the applicable service. In no event shall Cardinal be liable for incidental or consequential damages, including, without limitation, business interruptions, loss of use, or loss of profits incurred by client, its subsidiaries, affiliates or successors arising out of or related to the performance of the services hereunder by Cardinal, regardless of whether such claim is based upon any of the above stated reasons or otherwise. Results relate only to the samples identified above. This report shall not be reproduced except in full with written approval of Cardinal Laboratories.

Celey D. Keene, Lab Director/Quality Manager



PHONE (575) 393-2326 ° 101 E. MARLAND ° HOBBS, NM 88240

Analytical Results For:

TETRA TECH
 CHUCK TERHUNE
 901 WEST WALL STREET , STE 100
 MIDLAND TX, 79701
 Fax To: (432) 682-3946

Received:	06/18/2024	Sampling Date:	06/17/2024
Reported:	06/24/2024	Sampling Type:	Soil
Project Name:	EAST VACUUM (GSA) UNIT #004	Sampling Condition:	Cool & Intact
Project Number:	nSAP0335630157	Sample Received By:	Tamara Oldaker
Project Location:	LEA COUNTY		

Sample ID: BH - 2 (2-2.5') (H243520-04)

BTEx 8021B		mg/kg		Analyzed By: JH					
Analyte	Result	Reporting Limit	Analyzed	Method Blank	BS	% Recovery	True Value QC	RPD	Qualifier
Benzene*	<0.050	0.050	06/20/2024	ND	1.81	90.3	2.00	10.2	
Toluene*	<0.050	0.050	06/20/2024	ND	1.83	91.3	2.00	9.74	
Ethylbenzene*	<0.050	0.050	06/20/2024	ND	1.73	86.6	2.00	10.3	
Total Xylenes*	<0.150	0.150	06/20/2024	ND	5.37	89.5	6.00	9.96	
Total BTEX	<0.300	0.300	06/20/2024	ND					

Surrogate: 4-Bromofluorobenzene (PID) 99.0 % 71.5-134

Chloride, SM4500Cl-B		mg/kg		Analyzed By: HM					
Analyte	Result	Reporting Limit	Analyzed	Method Blank	BS	% Recovery	True Value QC	RPD	Qualifier
Chloride	16.0	16.0	06/19/2024	ND	432	108	400	0.00	

TPH 8015M		mg/kg		Analyzed By: MS					
Analyte	Result	Reporting Limit	Analyzed	Method Blank	BS	% Recovery	True Value QC	RPD	Qualifier
GRO C6-C10*	<10.0	10.0	06/19/2024	ND	184	92.0	200	0.761	
DRO >C10-C28*	<10.0	10.0	06/19/2024	ND	191	95.6	200	4.04	
EXT DRO >C28-C36	<10.0	10.0	06/19/2024	ND					

Surrogate: 1-Chlorooctane 69.3 % 48.2-134

Surrogate: 1-Chlorooctadecane 61.6 % 49.1-148

Cardinal Laboratories

*=Accredited Analyte

PLEASE NOTE: Liability and Damages. Cardinal's liability and client's exclusive remedy for any claim arising, whether based in contract or tort, shall be limited to the amount paid by client for analyses. All claims, including those for negligence and any other cause whatsoever shall be deemed waived unless made in writing and received by Cardinal within thirty (30) days after completion of the applicable service. In no event shall Cardinal be liable for incidental or consequential damages, including, without limitation, business interruptions, loss of use, or loss of profits incurred by client, its subsidiaries, affiliates or successors arising out of or related to the performance of the services hereunder by Cardinal, regardless of whether such claim is based upon any of the above stated reasons or otherwise. Results relate only to the samples identified above. This report shall not be reproduced except in full with written approval of Cardinal Laboratories.

Celey D. Keene, Lab Director/Quality Manager



PHONE (575) 393-2326 ° 101 E. MARLAND ° HOBBS, NM 88240

Analytical Results For:

TETRA TECH
 CHUCK TERHUNE
 901 WEST WALL STREET , STE 100
 MIDLAND TX, 79701
 Fax To: (432) 682-3946

Received:	06/18/2024	Sampling Date:	06/17/2024
Reported:	06/24/2024	Sampling Type:	Soil
Project Name:	EAST VACUUM (GSA) UNIT #004	Sampling Condition:	Cool & Intact
Project Number:	nSAP0335630157	Sample Received By:	Tamara Oldaker
Project Location:	LEA COUNTY		

Sample ID: BH - 3 (0-0.5') (H243520-05)

BTEX 8021B		mg/kg		Analyzed By: JH						
Analyte	Result	Reporting Limit	Analyzed	Method Blank	BS	% Recovery	True Value QC	RPD	Qualifier	
Benzene*	<0.050	0.050	06/20/2024	ND	1.81	90.3	2.00	10.2		
Toluene*	<0.050	0.050	06/20/2024	ND	1.83	91.3	2.00	9.74		
Ethylbenzene*	<0.050	0.050	06/20/2024	ND	1.73	86.6	2.00	10.3		
Total Xylenes*	<0.150	0.150	06/20/2024	ND	5.37	89.5	6.00	9.96		
Total BTEX	<0.300	0.300	06/20/2024	ND						

Surrogate: 4-Bromofluorobenzene (PID) 99.9 % 71.5-134

Chloride, SM4500CI-B		mg/kg		Analyzed By: HM						
Analyte	Result	Reporting Limit	Analyzed	Method Blank	BS	% Recovery	True Value QC	RPD	Qualifier	
Chloride	<16.0	16.0	06/19/2024	ND	432	108	400	0.00		

TPH 8015M		mg/kg		Analyzed By: MS					
Analyte	Result	Reporting Limit	Analyzed	Method Blank	BS	% Recovery	True Value QC	RPD	Qualifier
GRO C6-C10*	<10.0	10.0	06/19/2024	ND	184	92.0	200	0.761	
DRO >C10-C28*	<10.0	10.0	06/19/2024	ND	191	95.6	200	4.04	
EXT DRO >C28-C36	<10.0	10.0	06/19/2024	ND					

Surrogate: 1-Chlorooctane 88.9 % 48.2-134

Surrogate: 1-Chlorooctadecane 80.1 % 49.1-148

Cardinal Laboratories

*=Accredited Analyte

PLEASE NOTE: Liability and Damages. Cardinal's liability and client's exclusive remedy for any claim arising, whether based in contract or tort, shall be limited to the amount paid by client for analyses. All claims, including those for negligence and any other cause whatsoever shall be deemed waived unless made in writing and received by Cardinal within thirty (30) days after completion of the applicable service. In no event shall Cardinal be liable for incidental or consequential damages, including, without limitation, business interruptions, loss of use, or loss of profits incurred by client, its subsidiaries, affiliates or successors arising out of or related to the performance of the services hereunder by Cardinal, regardless of whether such claim is based upon any of the above stated reasons or otherwise. Results relate only to the samples identified above. This report shall not be reproduced except in full with written approval of Cardinal Laboratories.

Celey D. Keene, Lab Director/Quality Manager



PHONE (575) 393-2326 ° 101 E. MARLAND ° HOBBS, NM 88240

Analytical Results For:

TETRA TECH
 CHUCK TERHUNE
 901 WEST WALL STREET , STE 100
 MIDLAND TX, 79701
 Fax To: (432) 682-3946

Received:	06/18/2024	Sampling Date:	06/17/2024
Reported:	06/24/2024	Sampling Type:	Soil
Project Name:	EAST VACUUM (GSA) UNIT #004	Sampling Condition:	Cool & Intact
Project Number:	nSAP0335630157	Sample Received By:	Tamara Oldaker
Project Location:	LEA COUNTY		

Sample ID: BH - 3 (2-2.5') (H243520-06)

BTEx 8021B		mg/kg		Analyzed By: JH						
Analyte	Result	Reporting Limit	Analyzed	Method Blank	BS	% Recovery	True Value QC	RPD	Qualifier	
Benzene*	<0.050	0.050	06/20/2024	ND	1.81	90.3	2.00	10.2		
Toluene*	<0.050	0.050	06/20/2024	ND	1.83	91.3	2.00	9.74		
Ethylbenzene*	<0.050	0.050	06/20/2024	ND	1.73	86.6	2.00	10.3		
Total Xylenes*	<0.150	0.150	06/20/2024	ND	5.37	89.5	6.00	9.96		
Total BTEX	<0.300	0.300	06/20/2024	ND						

Surrogate: 4-Bromofluorobenzene (PID) 98.6 % 71.5-134

Chloride, SM4500Cl-B		mg/kg		Analyzed By: HM						
Analyte	Result	Reporting Limit	Analyzed	Method Blank	BS	% Recovery	True Value QC	RPD	Qualifier	
Chloride	16.0	16.0	06/19/2024	ND	432	108	400	0.00		

TPH 8015M		mg/kg		Analyzed By: MS					
Analyte	Result	Reporting Limit	Analyzed	Method Blank	BS	% Recovery	True Value QC	RPD	Qualifier
GRO C6-C10*	<10.0	10.0	06/19/2024	ND	184	92.0	200	0.761	
DRO >C10-C28*	<10.0	10.0	06/19/2024	ND	191	95.6	200	4.04	
EXT DRO >C28-C36	<10.0	10.0	06/19/2024	ND					

Surrogate: 1-Chlorooctane 93.8 % 48.2-134

Surrogate: 1-Chlorooctadecane 85.7 % 49.1-148

Cardinal Laboratories

*=Accredited Analyte

PLEASE NOTE: Liability and Damages. Cardinal's liability and client's exclusive remedy for any claim arising, whether based in contract or tort, shall be limited to the amount paid by client for analyses. All claims, including those for negligence and any other cause whatsoever shall be deemed waived unless made in writing and received by Cardinal within thirty (30) days after completion of the applicable service. In no event shall Cardinal be liable for incidental or consequential damages, including, without limitation, business interruptions, loss of use, or loss of profits incurred by client, its subsidiaries, affiliates or successors arising out of or related to the performance of the services hereunder by Cardinal, regardless of whether such claim is based upon any of the above stated reasons or otherwise. Results relate only to the samples identified above. This report shall not be reproduced except in full with written approval of Cardinal Laboratories.

Celey D. Keene, Lab Director/Quality Manager



PHONE (575) 393-2326 ° 101 E. MARLAND ° HOBBS, NM 88240

Analytical Results For:

TETRA TECH
 CHUCK TERHUNE
 901 WEST WALL STREET , STE 100
 MIDLAND TX, 79701
 Fax To: (432) 682-3946

Received:	06/18/2024	Sampling Date:	06/17/2024
Reported:	06/24/2024	Sampling Type:	Soil
Project Name:	EAST VACUUM (GSA) UNIT #004	Sampling Condition:	Cool & Intact
Project Number:	nSAP0335630157	Sample Received By:	Tamara Oldaker
Project Location:	LEA COUNTY		

Sample ID: BH - 4 (0-0.5') (H243520-07)

BTEx 8021B		mg/kg		Analyzed By: JH					
Analyte	Result	Reporting Limit	Analyzed	Method Blank	BS	% Recovery	True Value QC	RPD	Qualifier
Benzene*	<0.050	0.050	06/20/2024	ND	1.81	90.3	2.00	10.2	
Toluene*	<0.050	0.050	06/20/2024	ND	1.83	91.3	2.00	9.74	
Ethylbenzene*	<0.050	0.050	06/20/2024	ND	1.73	86.6	2.00	10.3	
Total Xylenes*	<0.150	0.150	06/20/2024	ND	5.37	89.5	6.00	9.96	
Total BTEX	<0.300	0.300	06/20/2024	ND					

Surrogate: 4-Bromofluorobenzene (PID) 98.3 % 71.5-134

Chloride, SM4500Cl-B		mg/kg		Analyzed By: HM					
Analyte	Result	Reporting Limit	Analyzed	Method Blank	BS	% Recovery	True Value QC	RPD	Qualifier
Chloride	<16.0	16.0	06/19/2024	ND	432	108	400	0.00	

TPH 8015M		mg/kg		Analyzed By: MS					
Analyte	Result	Reporting Limit	Analyzed	Method Blank	BS	% Recovery	True Value QC	RPD	Qualifier
GRO C6-C10*	<10.0	10.0	06/19/2024	ND	184	92.0	200	0.761	
DRO >C10-C28*	<10.0	10.0	06/19/2024	ND	191	95.6	200	4.04	
EXT DRO >C28-C36	<10.0	10.0	06/19/2024	ND					

Surrogate: 1-Chlorooctane 78.5 % 48.2-134

Surrogate: 1-Chlorooctadecane 68.9 % 49.1-148

Cardinal Laboratories

*=Accredited Analyte

PLEASE NOTE: Liability and Damages. Cardinal's liability and client's exclusive remedy for any claim arising, whether based in contract or tort, shall be limited to the amount paid by client for analyses. All claims, including those for negligence and any other cause whatsoever shall be deemed waived unless made in writing and received by Cardinal within thirty (30) days after completion of the applicable service. In no event shall Cardinal be liable for incidental or consequential damages, including, without limitation, business interruptions, loss of use, or loss of profits incurred by client, its subsidiaries, affiliates or successors arising out of or related to the performance of the services hereunder by Cardinal, regardless of whether such claim is based upon any of the above stated reasons or otherwise. Results relate only to the samples identified above. This report shall not be reproduced except in full with written approval of Cardinal Laboratories.

Celey D. Keene, Lab Director/Quality Manager



PHONE (575) 393-2326 ° 101 E. MARLAND ° HOBBS, NM 88240

Analytical Results For:

TETRA TECH
 CHUCK TERHUNE
 901 WEST WALL STREET , STE 100
 MIDLAND TX, 79701
 Fax To: (432) 682-3946

Received:	06/18/2024	Sampling Date:	06/17/2024
Reported:	06/24/2024	Sampling Type:	Soil
Project Name:	EAST VACUUM (GSA) UNIT #004	Sampling Condition:	Cool & Intact
Project Number:	nSAP0335630157	Sample Received By:	Tamara Oldaker
Project Location:	LEA COUNTY		

Sample ID: BH - 4 (2-2.5') (H243520-08)

BTEx 8021B		mg/kg		Analyzed By: JH					
Analyte	Result	Reporting Limit	Analyzed	Method Blank	BS	% Recovery	True Value QC	RPD	Qualifier
Benzene*	<0.050	0.050	06/20/2024	ND	1.81	90.3	2.00	10.2	
Toluene*	<0.050	0.050	06/20/2024	ND	1.83	91.3	2.00	9.74	
Ethylbenzene*	<0.050	0.050	06/20/2024	ND	1.73	86.6	2.00	10.3	
Total Xylenes*	<0.150	0.150	06/20/2024	ND	5.37	89.5	6.00	9.96	
Total BTEX	<0.300	0.300	06/20/2024	ND					

Surrogate: 4-Bromofluorobenzene (PID) 99.6 % 71.5-134

Chloride, SM4500Cl-B		mg/kg		Analyzed By: HM					
Analyte	Result	Reporting Limit	Analyzed	Method Blank	BS	% Recovery	True Value QC	RPD	Qualifier
Chloride	32.0	16.0	06/19/2024	ND	432	108	400	0.00	

TPH 8015M		mg/kg		Analyzed By: MS					
Analyte	Result	Reporting Limit	Analyzed	Method Blank	BS	% Recovery	True Value QC	RPD	Qualifier
GRO C6-C10*	<10.0	10.0	06/19/2024	ND	184	92.0	200	0.761	
DRO >C10-C28*	<10.0	10.0	06/19/2024	ND	191	95.6	200	4.04	
EXT DRO >C28-C36	<10.0	10.0	06/19/2024	ND					

Surrogate: 1-Chlorooctane 82.1 % 48.2-134

Surrogate: 1-Chlorooctadecane 76.0 % 49.1-148

Cardinal Laboratories

*=Accredited Analyte

PLEASE NOTE: Liability and Damages. Cardinal's liability and client's exclusive remedy for any claim arising, whether based in contract or tort, shall be limited to the amount paid by client for analyses. All claims, including those for negligence and any other cause whatsoever shall be deemed waived unless made in writing and received by Cardinal within thirty (30) days after completion of the applicable service. In no event shall Cardinal be liable for incidental or consequential damages, including, without limitation, business interruptions, loss of use, or loss of profits incurred by client, its subsidiaries, affiliates or successors arising out of or related to the performance of the services hereunder by Cardinal, regardless of whether such claim is based upon any of the above stated reasons or otherwise. Results relate only to the samples identified above. This report shall not be reproduced except in full with written approval of Cardinal Laboratories.

Celey D. Keene, Lab Director/Quality Manager

PHONE (575) 393-2326 • 101 E. MARLAND • HOBBS, NM 88240

Notes and Definitions

QM-07	The spike recovery was outside acceptance limits for the MS and/or MSD. The batch was accepted based on acceptable LCS recovery.
BS-3	Blank spike recovery outside of lab established statistical limits, but still within method limits. Data is not adversely affected.
ND	Analyte NOT DETECTED at or above the reporting limit
RPD	Relative Percent Difference
**	Samples not received at proper temperature of 6°C or below.
***	Insufficient time to reach temperature.
-	Chloride by SM4500Cl-B does not require samples be received at or below 6°C Samples reported on an as received basis (wet) unless otherwise noted on report

Cardinal Laboratories

*=Accredited Analyte

PLEASE NOTE: Liability and Damages. Cardinal's liability and client's exclusive remedy for any claim arising, whether based in contract or tort, shall be limited to the amount paid by client for analyses. All claims, including those for negligence and any other cause whatsoever shall be deemed waived unless made in writing and received by Cardinal within thirty (30) days after completion of the applicable service. In no event shall Cardinal be liable for incidental or consequential damages, including, without limitation, business interruptions, loss of use, or loss of profits incurred by client, its subsidiaries, affiliates or successors arising out of or related to the performance of the services hereunder by Cardinal, regardless of whether such claim is based upon any of the above stated reasons or otherwise. Results relate only to the samples identified above. This report shall not be reproduced except in full with written approval of Cardinal Laboratories.

A handwritten signature in black ink, appearing to read "Celey D. Keene".

Celey D. Keene, Lab Director/Quality Manager



101 East Marland, Hobbs, NM 88240
(575) 393-2326 FAX (575) 393-2476

CHAIN-OF-CUSTODY AND ANALYSIS REQUEST

Page 11 of 11

Company Name: <u>Tetra Tech</u>				BILL TO				ANALYSIS REQUEST																															
Project Manager: <u>Chris Straub</u>				P.O. #:				<div style="display: flex; justify-content: space-between;"> <div style="writing-mode: vertical-rl; transform: rotate(180deg);"> BTEX TPH (DRO/600/1000) Chloride 4500 </div> </div>																															
Address:				Company: <u>Tetra Tech</u>																																			
City: <u>M. Nolan</u> State: <u>TX</u> Zip:				Attn:																																			
Phone #: Fax #:				Address:																																			
Project #: <u>NSAP 0335630157</u> Project Owner:				City:																																			
Project Name: <u>East Vacuum (GSA) Unit #004</u>				State: Zip:																																			
Project Location: <u>Lea County</u>				Phone #:																																			
Sampler Name: <u>Gilberto Sanchez</u>				Fax #:																																			
FOR LAB USE ONLY		Lab I.D.		Sample I.D.		(G/RAB OR (C)OMP.		# CONTAINERS		MATRIX		PRESERV.		SAMPLING																									
						GROUNDWATER		WASTEWATER		SOIL		OIL		SLUDGE		OTHER:		ACID/BASE:		ICE / COOL		OTHER:		DATE		TIME													
		<u>H243570</u>								<u>A</u>								<u>↑</u>						<u>6.17</u>															
		<u>1 PH1 (0-0.5')</u>																																					
		<u>2 PH1 (2-2.5')</u>																																					
		<u>3 PH2 (0-0.5')</u>																																					
		<u>4 PH2 (2-2.5')</u>																																					
		<u>5 PH3 (0-0.5')</u>																																					
		<u>6 PH3 (2-2.5')</u>																																					
		<u>7 PH4 (0-0.5')</u>																																					
		<u>8 PH4 (2-2.5')</u>																																					

PLEASE NOTE: Liability and Damages. Cardinal's liability and client's exclusive remedy for any claim arising whether based in contract or tort, shall be limited to the amount paid by the client for the analyses. All claims including those for negligence and any other cause whatsoever shall be deemed waived unless made in writing and received by Cardinal within 30 days after completion of the applicable service. In no event shall Cardinal be liable for incidental or consequential damages, including without limitation, business interruptions, loss of use, or loss of profits incurred by client, its subsidiaries, affiliates or successors arising out of or related to the performance of services hereunder by Cardinal, regardless of whether such claim is based upon any of the above stated reasons or otherwise.

Relinquished By: <u>Gilberto Sanchez</u>		Date: <u>6.18.24</u>		Received By: <u>[Signature]</u>		Verbal Result: <input type="checkbox"/> Yes <input type="checkbox"/> No		Add'l Phone #:	
Relinquished By:		Time: <u>0910</u>		Received By:		All Results are emailed. Please provide Email address:			
Delivered By: (Circle One)		Observed Temp. °C <u>33</u>		Sample Condition		CHECKED BY: (Initials) <u>[Signature]</u>		REMARKS:	
Sampler - UPS - Bus - Other:		Corrected Temp. °C		Cool Intact <input checked="" type="checkbox"/> Yes <input type="checkbox"/> No					
				Cool Intact <input type="checkbox"/> Yes <input type="checkbox"/> No					
				Turnaround Time: <input checked="" type="checkbox"/> Standard <input type="checkbox"/> Rush					
				Thermometer ID #140					
				Correction Factor 0°C					
				Bacteria (only) Sample Condition					
				Cool Intact Observed Temp. °C					
				<input type="checkbox"/> Yes <input type="checkbox"/> No					
				Corrected Temp. °C					

FORM-006 R 3.4 07/11/23

† Cardinal will not accept verbal changes. Please email changes to celey.k@cardinallabsnm.com

District I
1625 N. French Dr., Hobbs, NM 88240
Phone:(575) 393-6161 Fax:(575) 393-0720
District II
811 S. First St., Artesia, NM 88210
Phone:(575) 748-1283 Fax:(575) 748-9720
District III
1000 Rio Brazos Rd., Aztec, NM 87410
Phone:(505) 334-6178 Fax:(505) 334-6170
District IV
1220 S. St Francis Dr., Santa Fe, NM 87505
Phone:(505) 476-3470 Fax:(505) 476-3462

State of New Mexico
Energy, Minerals and Natural Resources
Oil Conservation Division
1220 S. St Francis Dr.
Santa Fe, NM 87505

QUESTIONS

Action 376234

QUESTIONS

Operator: Maverick Permian LLC 1000 Main Street, Suite 2900 Houston, TX 77002	OGRID:	331199
	Action Number:	376234
	Action Type:	
	[C-141] Remediation Closure Request C-141 (C-141-v-Closure)	

QUESTIONS

Prerequisites	
Incident ID (n#)	nSAP0335630157
Incident Name	NSAP0335630157 EAST VACUUM (GSA) UNIT #004 @ 30-025-02964
Incident Type	Oil Release
Incident Status	Remediation Closure Report Received
Incident Well	[30-025-02964] EAST VACUUM (GSA) UNIT #004

Location of Release Source	
Please answer all the questions in this group.	
Site Name	EAST VACUUM (GSA) UNIT #004
Date Release Discovered	10/30/2003
Surface Owner	State

Incident Details	
Please answer all the questions in this group.	
Incident Type	Oil Release
Did this release result in a fire or is the result of a fire	No
Did this release result in any injuries	No
Has this release reached or does it have a reasonable probability of reaching a watercourse	No
Has this release endangered or does it have a reasonable probability of endangering public health	No
Has this release substantially damaged or will it substantially damage property or the environment	No
Is this release of a volume that is or may with reasonable probability be detrimental to fresh water	No

Nature and Volume of Release	
Material(s) released, please answer all that apply below. Any calculations or specific justifications for the volumes provided should be attached to the follow-up C-141 submission.	
Crude Oil Released (bbls) Details	Cause: Corrosion Flow Line - Production Crude Oil Released: 40 BBL Recovered: 35 BBL Lost: 5 BBL.
Produced Water Released (bbls) Details	Cause: Corrosion Flow Line - Production Produced Water Released: 5 BBL Recovered: 3 BBL Lost: 2 BBL.
Is the concentration of chloride in the produced water >10,000 mg/l	Yes
Condensate Released (bbls) Details	Not answered.
Natural Gas Vented (Mcf) Details	Not answered.
Natural Gas Flared (Mcf) Details	Not answered.
Other Released Details	Not answered.
Are there additional details for the questions above (i.e. any answer containing Other, Specify, Unknown, and/or Fire, or any negative lost amounts)	Not answered.

District I

1625 N. French Dr., Hobbs, NM 88240
Phone:(575) 393-6161 Fax:(575) 393-0720

District II

811 S. First St., Artesia, NM 88210
Phone:(575) 748-1283 Fax:(575) 748-9720

District III

1000 Rio Brazos Rd., Aztec, NM 87410
Phone:(505) 334-6178 Fax:(505) 334-6170

District IV

1220 S. St Francis Dr., Santa Fe, NM 87505
Phone:(505) 476-3470 Fax:(505) 476-3462

State of New Mexico
Energy, Minerals and Natural Resources
Oil Conservation Division
1220 S. St Francis Dr.
Santa Fe, NM 87505

QUESTIONS, Page 2

Action 376234

QUESTIONS (continued)

Operator: Maverick Permian LLC 1000 Main Street, Suite 2900 Houston, TX 77002	OGRID:
	331199
	Action Number:
	376234
Action Type: [C-141] Remediation Closure Request C-141 (C-141-v-Closure)	

QUESTIONS

Nature and Volume of Release (continued)	
Is this a gas only submission (i.e. only significant Mcf values reported)	No, according to supplied volumes this does not appear to be a "gas only" report.
Was this a major release as defined by Subsection A of 19.15.29.7 NMAC	Yes
Reasons why this would be considered a submission for a notification of a major release	From paragraph A. "Major release" determine using: (1) an unauthorized release of a volume, excluding gases, of 25 barrels or more.
With the implementation of the 19.15.27 NMAC (05/25/2021), venting and/or flaring of natural gas (i.e. gas only) are to be submitted on the C-129 form.	

Initial Response

The responsible party must undertake the following actions immediately unless they could create a safety hazard that would result in injury.

The source of the release has been stopped	True
The impacted area has been secured to protect human health and the environment	True
Released materials have been contained via the use of berms or dikes, absorbent pads, or other containment devices	True
All free liquids and recoverable materials have been removed and managed appropriately	True
If all the actions described above have not been undertaken, explain why	Not answered.

Per Paragraph (4) of Subsection B of 19.15.29.8 NMAC the responsible party may commence remediation immediately after discovery of a release. If remediation has begun, please prepare and attach a narrative of actions to date in the follow-up C-141 submission. If remedial efforts have been successfully completed or if the release occurred within a lined containment area (see Subparagraph (a) of Paragraph (5) of Subsection A of 19.15.29.11 NMAC), please prepare and attach all information needed for closure evaluation in the follow-up C-141 submission.

I hereby certify that the information given above is true and complete to the best of my knowledge and understand that pursuant to OCD rules and regulations all operators are required to report and/or file certain release notifications and perform corrective actions for releases which may endanger public health or the environment. The acceptance of a C-141 report by the OCD does not relieve the operator of liability should their operations have failed to adequately investigate and remediate contamination that pose a threat to groundwater, surface water, human health or the environment. In addition, OCD acceptance of a C-141 report does not relieve the operator of responsibility for compliance with any other federal, state, or local laws and/or regulations.

I hereby agree and sign off to the above statement	Name: Chuck Terhune Title: Program Manager Email: chuck.terhune@tetrattech.com Date: 07/17/2024
--	--

District I

1625 N. French Dr., Hobbs, NM 88240
Phone:(575) 393-6161 Fax:(575) 393-0720

District II

811 S. First St., Artesia, NM 88210
Phone:(575) 748-1283 Fax:(575) 748-9720

District III

1000 Rio Brazos Rd., Aztec, NM 87410
Phone:(505) 334-6178 Fax:(505) 334-6170

District IV

1220 S. St Francis Dr., Santa Fe, NM 87505
Phone:(505) 476-3470 Fax:(505) 476-3462

State of New Mexico
Energy, Minerals and Natural Resources
Oil Conservation Division
1220 S. St Francis Dr.
Santa Fe, NM 87505

QUESTIONS, Page 3

Action 376234

QUESTIONS (continued)

Operator: Maverick Permian LLC 1000 Main Street, Suite 2900 Houston, TX 77002	OGRID:
	331199
	Action Number:
	376234
	Action Type:
	[C-141] Remediation Closure Request C-141 (C-141-v-Closure)

QUESTIONS**Site Characterization**

Please answer all the questions in this group (only required when seeking remediation plan approval and beyond). This information must be provided to the appropriate district office no later than 90 days after the release discovery date.

What is the shallowest depth to groundwater beneath the area affected by the release in feet below ground surface (ft bgs)	Between 75 and 100 (ft.)
What method was used to determine the depth to ground water	Estimate or Other
Did this release impact groundwater or surface water	No
What is the minimum distance, between the closest lateral extents of the release and the following surface areas:	
A continuously flowing watercourse or any other significant watercourse	Greater than 5 (mi.)
Any lakebed, sinkhole, or playa lake (measured from the ordinary high-water mark)	Between 1000 (ft.) and ½ (mi.)
An occupied permanent residence, school, hospital, institution, or church	Greater than 5 (mi.)
A spring or a private domestic fresh water well used by less than five households for domestic or stock watering purposes	Between ½ and 1 (mi.)
Any other fresh water well or spring	Between ½ and 1 (mi.)
Incorporated municipal boundaries or a defined municipal fresh water well field	Greater than 5 (mi.)
A wetland	Between 1000 (ft.) and ½ (mi.)
A subsurface mine	Greater than 5 (mi.)
An (non-karst) unstable area	Greater than 5 (mi.)
Categorize the risk of this well / site being in a karst geology	Low
A 100-year floodplain	Greater than 5 (mi.)
Did the release impact areas not on an exploration, development, production, or storage site	No

Remediation Plan

Please answer all the questions that apply or are indicated. This information must be provided to the appropriate district office no later than 90 days after the release discovery date.

Requesting a remediation plan approval with this submission	Yes
Attach a comprehensive report demonstrating the lateral and vertical extents of soil contamination associated with the release have been determined, pursuant to 19.15.29.11 NMAC and 19.15.29.13 NMAC.	
Have the lateral and vertical extents of contamination been fully delineated	Yes
Was this release entirely contained within a lined containment area	No

Soil Contamination Sampling: (Provide the highest observable value for each, in milligrams per kilograms.)

Chloride	(EPA 300.0 or SM4500 Cl B)	64
TPH (GRO+DRO+MRO)	(EPA SW-846 Method 8015M)	0
GRO+DRO	(EPA SW-846 Method 8015M)	0
BTEX	(EPA SW-846 Method 8021B or 8260B)	0
Benzene	(EPA SW-846 Method 8021B or 8260B)	0

Per Subsection B of 19.15.29.11 NMAC unless the site characterization report includes completed efforts at remediation, the report must include a proposed remediation plan in accordance with 19.15.29.12 NMAC, which includes the anticipated timelines for beginning and completing the remediation.

On what estimated date will the remediation commence	06/17/2024
On what date will (or did) the final sampling or liner inspection occur	06/17/2024
On what date will (or was) the remediation complete(d)	06/17/2024
What is the estimated surface area (in square feet) that will be reclaimed	0
What is the estimated volume (in cubic yards) that will be reclaimed	0
What is the estimated surface area (in square feet) that will be remediated	0
What is the estimated volume (in cubic yards) that will be remediated	0

These estimated dates and measurements are recognized to be the best guess or calculation at the time of submission and may (be) change(d) over time as more remediation efforts are completed.

The OCD recognizes that proposed remediation measures may have to be minimally adjusted in accordance with the physical realities encountered during remediation. If the responsible party has any need to significantly deviate from the remediation plan proposed, then it should consult with the division to determine if another remediation plan submission is required.

District I

1625 N. French Dr., Hobbs, NM 88240
Phone:(575) 393-6161 Fax:(575) 393-0720

District II

811 S. First St., Artesia, NM 88210
Phone:(575) 748-1283 Fax:(575) 748-9720

District III

1000 Rio Brazos Rd., Aztec, NM 87410
Phone:(505) 334-6178 Fax:(505) 334-6170

District IV

1220 S. St Francis Dr., Santa Fe, NM 87505
Phone:(505) 476-3470 Fax:(505) 476-3462

State of New Mexico
Energy, Minerals and Natural Resources
Oil Conservation Division
1220 S. St Francis Dr.
Santa Fe, NM 87505

QUESTIONS, Page 4

Action 376234

QUESTIONS (continued)

Operator: Maverick Permian LLC 1000 Main Street, Suite 2900 Houston, TX 77002	OGRID: 331199
	Action Number: 376234
	Action Type:
	[C-141] Remediation Closure Request C-141 (C-141-v-Closure)

QUESTIONS**Remediation Plan (continued)**

Please answer all the questions that apply or are indicated. This information must be provided to the appropriate district office no later than 90 days after the release discovery date.

This remediation will (or is expected to) utilize the following processes to remediate / reduce contaminants:

(Select all answers below that apply.)

(Ex Situ) Excavation and off-site disposal (i.e. dig and haul, hydrovac, etc.)	Not answered.
(Ex Situ) Excavation and on-site remediation (i.e. On-Site Land Farms)	Not answered.
(In Situ) Soil Vapor Extraction	Not answered.
(In Situ) Chemical processing (i.e. Soil Shredding, Potassium Permanganate, etc.)	Not answered.
(In Situ) Biological processing (i.e. Microbes / Fertilizer, etc.)	Not answered.
(In Situ) Physical processing (i.e. Soil Washing, Gypsum, Disking, etc.)	Not answered.
Ground Water Abatement pursuant to 19.15.30 NMAC	Not answered.
OTHER (Non-listed remedial process)	Yes
Other Non-listed Remedial Process. Please specify	No soil concentrations were found above reclamation requirements. No remediation is required.

Per Subsection B of 19.15.29.11 NMAC unless the site characterization report includes completed efforts at remediation, the report must include a proposed remediation plan in accordance with 19.15.29.12 NMAC, which includes the anticipated timelines for beginning and completing the remediation.

I hereby certify that the information given above is true and complete to the best of my knowledge and understand that pursuant to OCD rules and regulations all operators are required to report and/or file certain release notifications and perform corrective actions for releases which may endanger public health or the environment. The acceptance of a C-141 report by the OCD does not relieve the operator of liability should their operations have failed to adequately investigate and remediate contamination that pose a threat to groundwater, surface water, human health or the environment. In addition, OCD acceptance of a C-141 report does not relieve the operator of responsibility for compliance with any other federal, state, or local laws and/or regulations.

I hereby agree and sign off to the above statement	Name: Chuck Terhune Title: Program Manager Email: chuck.terhune@tetrattech.com Date: 08/21/2024
--	--

The OCD recognizes that proposed remediation measures may have to be minimally adjusted in accordance with the physical realities encountered during remediation. If the responsible party has any need to significantly deviate from the remediation plan proposed, then it should consult with the division to determine if another remediation plan submission is required.

District I
1625 N. French Dr., Hobbs, NM 88240
Phone:(575) 393-6161 Fax:(575) 393-0720
District II
811 S. First St., Artesia, NM 88210
Phone:(575) 748-1283 Fax:(575) 748-9720
District III
1000 Rio Brazos Rd., Aztec, NM 87410
Phone:(505) 334-6178 Fax:(505) 334-6170
District IV
1220 S. St Francis Dr., Santa Fe, NM 87505
Phone:(505) 476-3470 Fax:(505) 476-3462

State of New Mexico
Energy, Minerals and Natural Resources
Oil Conservation Division
1220 S. St Francis Dr.
Santa Fe, NM 87505

QUESTIONS, Page 5

Action 376234

QUESTIONS (continued)

Operator: Maverick Permian LLC 1000 Main Street, Suite 2900 Houston, TX 77002	OGRID: 331199
	Action Number: 376234
	Action Type: [C-141] Remediation Closure Request C-141 (C-141-v-Closure)

QUESTIONS

Deferral Requests Only	
Only answer the questions in this group if seeking a deferral upon approval this submission. Each of the following items must be confirmed as part of any request for deferral of remediation.	
Requesting a deferral of the remediation closure due date with the approval of this submission	No

District I

1625 N. French Dr., Hobbs, NM 88240
Phone:(575) 393-6161 Fax:(575) 393-0720

District II

811 S. First St., Artesia, NM 88210
Phone:(575) 748-1283 Fax:(575) 748-9720

District III

1000 Rio Brazos Rd., Aztec, NM 87410
Phone:(505) 334-6178 Fax:(505) 334-6170

District IV

1220 S. St Francis Dr., Santa Fe, NM 87505
Phone:(505) 476-3470 Fax:(505) 476-3462

State of New Mexico
Energy, Minerals and Natural Resources
Oil Conservation Division
1220 S. St Francis Dr.
Santa Fe, NM 87505

QUESTIONS, Page 6

Action 376234

QUESTIONS (continued)

Operator: Maverick Permian LLC 1000 Main Street, Suite 2900 Houston, TX 77002	OGRID:	331199
	Action Number:	376234
	Action Type:	[C-141] Remediation Closure Request C-141 (C-141-v-Closure)

QUESTIONS

Sampling Event Information	
Last sampling notification (C-141N) recorded	354421
Sampling date pursuant to Subparagraph (a) of Paragraph (1) of Subsection D of 19.15.29.12 NMAC	06/17/2024
What was the (estimated) number of samples that were to be gathered	4
What was the sampling surface area in square feet	800

Remediation Closure Request

Only answer the questions in this group if seeking remediation closure for this release because all remediation steps have been completed.

Requesting a remediation closure approval with this submission	Yes
Have the lateral and vertical extents of contamination been fully delineated	Yes
Was this release entirely contained within a lined containment area	No
All areas reasonably needed for production or subsequent drilling operations have been stabilized, returned to the sites existing grade, and have a soil cover that prevents ponding of water, minimizing dust and erosion	Yes
What was the total surface area (in square feet) remediated	0
What was the total volume (cubic yards) remediated	0
All areas not reasonably needed for production or subsequent drilling operations have been reclaimed to contain a minimum of four feet of non-waste contain earthen material with concentrations less than 600 mg/kg chlorides, 100 mg/kg TPH, 50 mg/kg BTEX, and 10 mg/kg Benzene	Yes
What was the total surface area (in square feet) reclaimed	0
What was the total volume (in cubic yards) reclaimed	0
Summarize any additional remediation activities not included by answers (above)	No soil concentrations were found above reclamation requirements. No remediation is required.

The responsible party must attach information demonstrating they have complied with all applicable closure requirements and any conditions or directives of the OCD. This demonstration should be in the form of a comprehensive report (in .pdf format) including a scaled site map, sampling diagrams, relevant field notes, photographs of any excavation prior to backfilling, laboratory data including chain of custody documents of final sampling, and a narrative of the remedial activities. Refer to 19.15.29.12 NMAC.

I hereby certify that the information given above is true and complete to the best of my knowledge and understand that pursuant to OCD rules and regulations all operators are required to report and/or file certain release notifications and perform corrective actions for releases which may endanger public health or the environment. The acceptance of a C-141 report by the OCD does not relieve the operator of liability should their operations have failed to adequately investigate and remediate contamination that pose a threat to groundwater, surface water, human health or the environment. In addition, OCD acceptance of a C-141 report does not relieve the operator of responsibility for compliance with any other federal, state, or local laws and/or regulations. The responsible party acknowledges they must substantially restore, reclaim, and re-vegetate the impacted surface area to the conditions that existed prior to the release or their final land use in accordance with 19.15.29.13 NMAC including notification to the OCD when reclamation and re-vegetation are complete.

I hereby agree and sign off to the above statement	Name: Chuck Terhune Title: Program Manager Email: chuck.terhune@tetrattech.com Date: 08/21/2024
--	--

District I
1625 N. French Dr., Hobbs, NM 88240
Phone:(575) 393-6161 Fax:(575) 393-0720
District II
811 S. First St., Artesia, NM 88210
Phone:(575) 748-1283 Fax:(575) 748-9720
District III
1000 Rio Brazos Rd., Aztec, NM 87410
Phone:(505) 334-6178 Fax:(505) 334-6170
District IV
1220 S. St Francis Dr., Santa Fe, NM 87505
Phone:(505) 476-3470 Fax:(505) 476-3462

State of New Mexico
Energy, Minerals and Natural Resources
Oil Conservation Division
1220 S. St Francis Dr.
Santa Fe, NM 87505

QUESTIONS, Page 7

Action 376234

QUESTIONS (continued)

Operator: Maverick Permian LLC 1000 Main Street, Suite 2900 Houston, TX 77002	OGRID: 331199
	Action Number: 376234
	Action Type: [C-141] Remediation Closure Request C-141 (C-141-v-Closure)

QUESTIONS

Reclamation Report	
Only answer the questions in this group if all reclamation steps have been completed.	
Requesting a reclamation approval with this submission	No

District I
1625 N. French Dr., Hobbs, NM 88240
Phone:(575) 393-6161 Fax:(575) 393-0720
District II
811 S. First St., Artesia, NM 88210
Phone:(575) 748-1283 Fax:(575) 748-9720
District III
1000 Rio Brazos Rd., Aztec, NM 87410
Phone:(505) 334-6178 Fax:(505) 334-6170
District IV
1220 S. St Francis Dr., Santa Fe, NM 87505
Phone:(505) 476-3470 Fax:(505) 476-3462

State of New Mexico
Energy, Minerals and Natural Resources
Oil Conservation Division
1220 S. St Francis Dr.
Santa Fe, NM 87505

CONDITIONS

Action 376234

CONDITIONS

Operator: Maverick Permian LLC 1000 Main Street, Suite 2900 Houston, TX 77002	OGRID:
	331199
	Action Number:
	376234
Action Type: [C-141] Remediation Closure Request C-141 (C-141-v-Closure)	

CONDITIONS

Created By	Condition	Condition Date
amaxwell	Remediation closure approved.	9/23/2024
amaxwell	A reclamation report will not be accepted until reclamation of the release area, including areas reasonably needed for production or drilling activities, is complete and meet the requirements of 19.15.29.13 NMAC. Areas not reasonably needed for production or drilling activities will still need to be reclaimed and revegetated as early as practicable.	9/23/2024
amaxwell	The reclamation report will need to include: Executive Summary of the reclamation activities; Scaled Site Map including sampling locations; Analytical results including, but not limited to, results showing that any remaining impacts meet the reclamation standards and results to prove the backfill is non-waste containing; At least one (1) representative 5-point composite sample will need to be collected from the backfill material that will be used for the reclamation of the top four feet of the excavation. OCD reserves the right to request additional sampling if needed; pictures of the backfilled areas showing that the area is back, as nearly as practical, to the original condition or the final land use and maintain those areas to control dust and minimize erosion to the extent practical; pictures of the top layer, which is either the background thickness of topsoil or one foot of suitable material to establish vegetation at the site, whichever is greater; and a revegetation plan.	9/23/2024