



**Pima Environmental Services**  
**5614 N. Lovington Highway**  
**Hobbs, NM 88240**  
**575-964-7740**

August 25, 2024

NMOCD District 2  
811 S. First St  
Artesia, NM, 88210

Bureau of Land Management  
620 East Green Street  
Carlsbad, NM 88220

**RE: Liner Inspection and Closure Report**  
**Boot Hill 25-1 Battery**  
**API No. 30-015-38552**  
**GPS: Latitude 32.63128 Longitude -104.43617**  
**UL- J, Section 25, Township 19S, Range 25E**  
**NMOCD Reference No. NAPP2420443181**

Spur Energy Partners (Spur) has contracted Pima Environmental Services, LLC (Pima) to perform a liner inspection and prepare this closure report for the release of produced water and crude oil that happened on the Boot Hill 25-1 Battery (Boot Hill). An initial C-141 was submitted on July 22, 2024, and can be found in Appendix B. This incident was assigned Incident ID NAPP2420443181, by the New Mexico Oil Conservation Division (NMOCD).

#### **Site Information and Site Characterization**

The Boot Hill is located approximately 3 miles northwest of Seven Rivers, NM. This spill site is in Unit J, Section 25, Township 19S, Range 25E, Latitude 32.63128 Longitude -104.43617, Eddy County, NM. A Location Map can be found in Figure 1.

Based on the well water data from the New Mexico Office of the State Engineer, the depth to the nearest groundwater in this vicinity measures 40 feet below grade surface (BGS), positioned roughly 0.43 miles away from the Boot Hill, drilled on April 1, 2004. Conversely, as per the United States Geological Survey well water data, the nearest groundwater depth in this region is recorded at 152.49 feet BGS, situated approximately 0.64 miles away from the Boot Hill, with the last gauge conducted on January 10, 2012. For detailed references to water surveys and the precise locations of water wells, please refer to Appendix A, inclusive of the relevant maps. Notably, Boot Hill is situated within an area with a medium potential for karst, as illustrated in Figure 3. Additionally, a comprehensive Topographic Map is available for reference in Figure 2.

#### **Release Information**

**NAPP2420443181:** On July 22, 2024, a flowline developed a hole due to corrosion, leading to the release of approximately 5 barrels of crude oil and 25 barrels of produced water into the lined containment area. Immediate actions were taken to halt the source of the release and secure the affected area. The spilled material was contained within the liner, and approximately all 5 barrels of crude oil and 25 barrels of produced water were successfully retrieved. The impacted area measured approximately 500 square feet.

A Site Map can be found in Figure 4.

#### **Site Assessment and Liner Inspection**

On August 13, 2024, Spur personnel submitted a notification for a liner inspection, adhering to the necessary 48-hour notice period. The details of the 48-hour notification can be referenced in Appendix C.

On August 15, 2024, after issuing a 48-hour notification, Pima Environmental conducted a thorough inspection of the lined containment area. The evaluation process involved cleaning the liner using a power washer and a vacuum truck to ensure the complete removal of any residual fluids. The inspection confirmed system remained intact and successfully retained all fluids. As a result, the liner was deemed functional, preventing any further environmental impact. A detailed report, including photographic evidence, is provided in Appendix C.

#### **Closure Request**

After careful review, Pima requests that this incident NAPP2420443181 be closed. Spur has complied with the applicable closure requirements.

Should you have any questions or need additional information, please feel free to contact Sebastian Orozco at 619-721-4813 or [sebastian@pimaoil.com](mailto:sebastian@pimaoil.com).

Respectfully,

*Sebastian Orozco*

Sebastian Orozco  
Project Manager  
Pima Environmental Services, LLC

#### **Attachments**

Figures:

- 1- Location Map
- 2- Topographic Map
- 3- Karst Map
- 4- Site Map

Appendices:

- Appendix A- Referenced Water Surveys
- Appendix B- 48 Hour Notification and Liner Inspection Form
- Appendix C- Photographic Documentation

## Figures:

Figure 1- Location Map

Figure 2- Topographic Map

Figure 3- Karst Map



Figure 4- Site Map

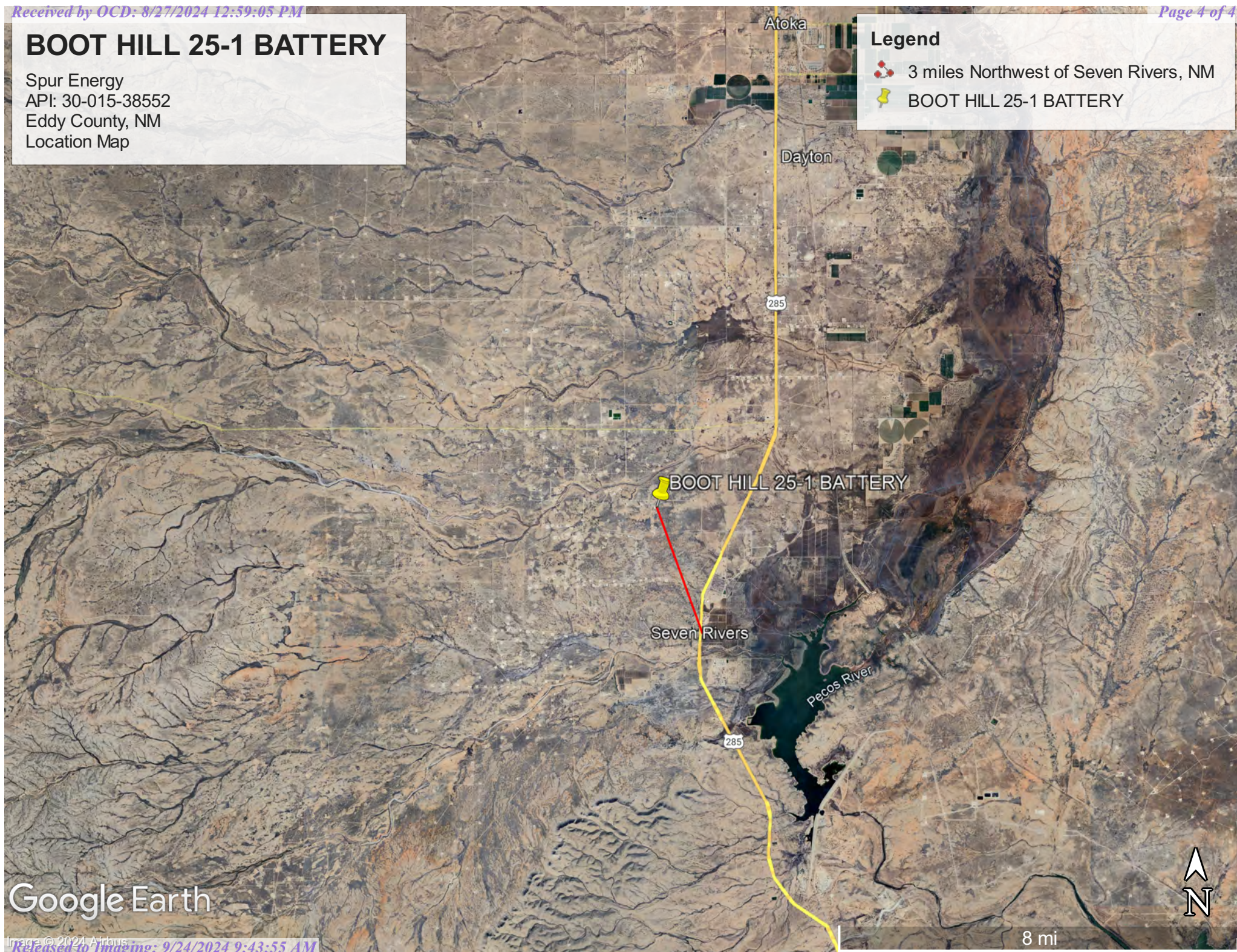


# BOOT HILL 25-1 BATTERY

Spur Energy  
API: 30-015-38552  
Eddy County, NM  
Location Map

## Legend

-  3 miles Northwest of Seven Rivers, NM
-  BOOT HILL 25-1 BATTERY




Google Earth

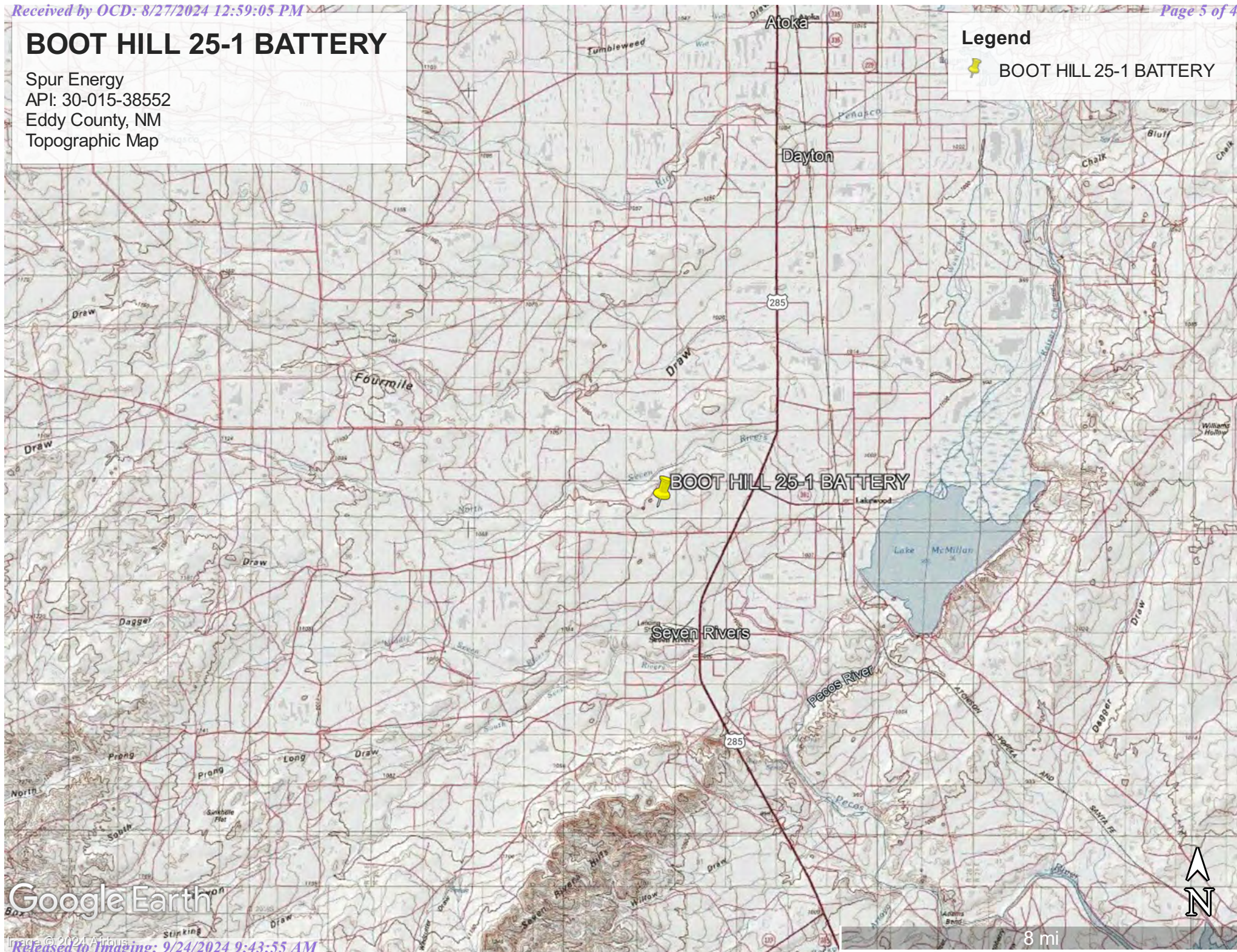


# BOOT HILL 25-1 BATTERY

Spur Energy  
API: 30-015-38552  
Eddy County, NM  
Topographic Map

## Legend

 BOOT HILL 25-1 BATTERY



Google Earth

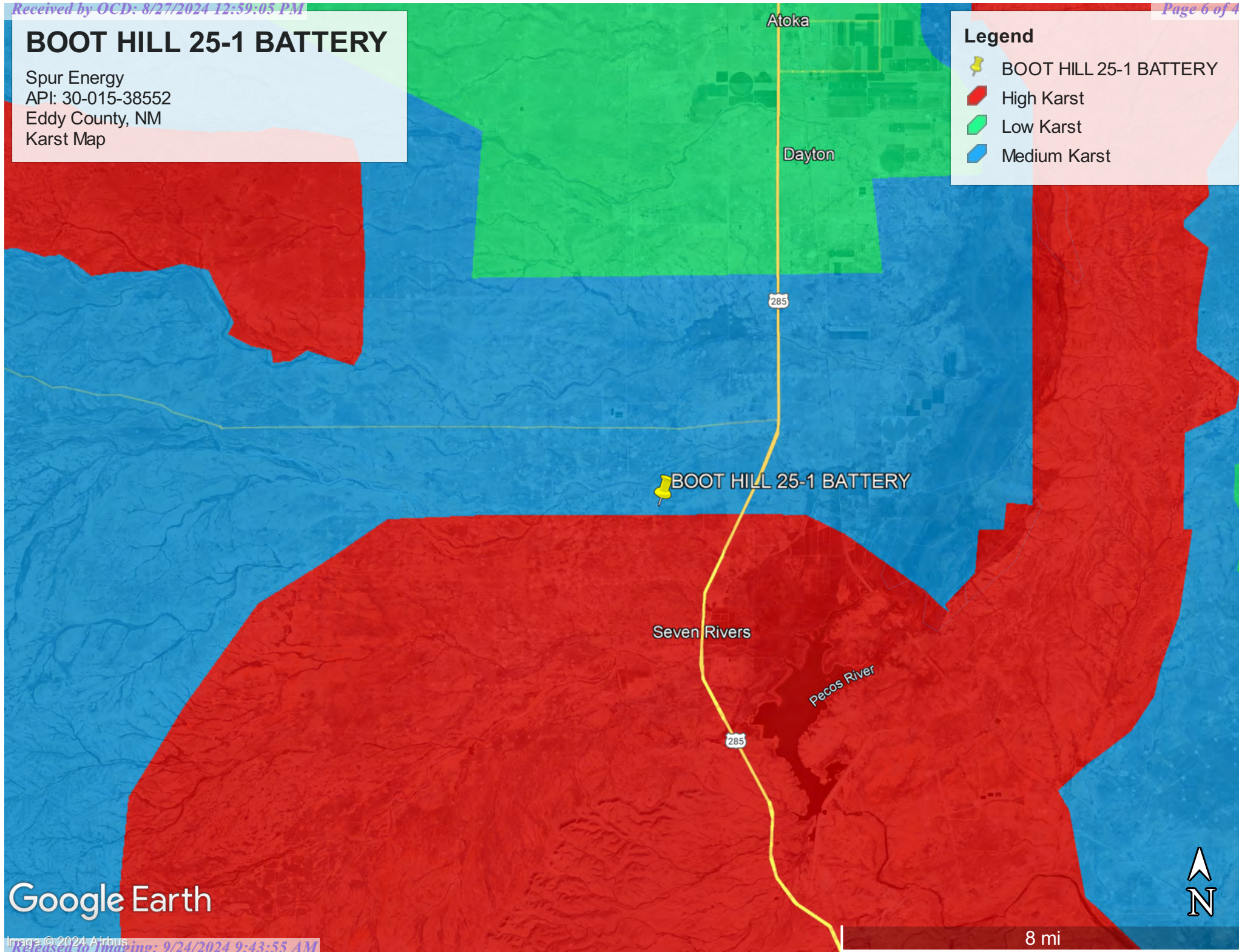


# BOOT HILL 25-1 BATTERY

Spur Energy  
API: 30-015-38552  
Eddy County, NM  
Karst Map

## Legend

-  BOOT HILL 25-1 BATTERY
-  High Karst
-  Low Karst
-  Medium Karst







## Boot Hill 25-1

Spur Energy  
API: 30-015-38552  
Eddy County, NM  
Site Map

### Legend

-  Boot Hill 25 #001H
-  Liner Inspection Area

Boot Hill 25 #001H



## Appendix A

### Water Surveys:


- OSE
- USGS
- Surface Water Map



# Point of Diversion Summary

quarters are 1=NW 2=NE 3=SW 4=SE  
quarters are smallest to largest

NAD83 UTM in meters

Well Tag	POD Nbr	Q64	Q16	Q4	Sec	Tws	Rng	X	Y	Map
	RA 10496	SW	SW	SE	25	19S	25E	552801.0	3609865.0 *	

\* UTM location was derived from PLSS - see Help

Driller License:	1064	Driller Company:	DELFORD W. MARTIN		
Driller Name:	MARTIN, DELFORD				
Drill Start Date:	2004-04-01	Drill Finish Date:	2004-04-04	Plug Date:	
Log File Date:	2004-04-14	PCW Rcv Date:		Source:	Shallow
Pump Type:		Pipe Discharge Size:		Estimated Yield:	15
Casing Size:	5.50	Depth Well:	110	Depth Water:	40

## Water Bearing Stratifications:

Top	Bottom	Description
75	80	Sandstone/Gravel/Conglomerate

## Casing Perforations:

Top	Bottom
40	100




The data is furnished by the NMOSE/ISC and is accepted by the recipient with the expressed understanding that the OSE/ISC make no warranties, expressed or implied, concerning the accuracy, completeness, reliability, usability, or suitability for any particular purpose of the data.

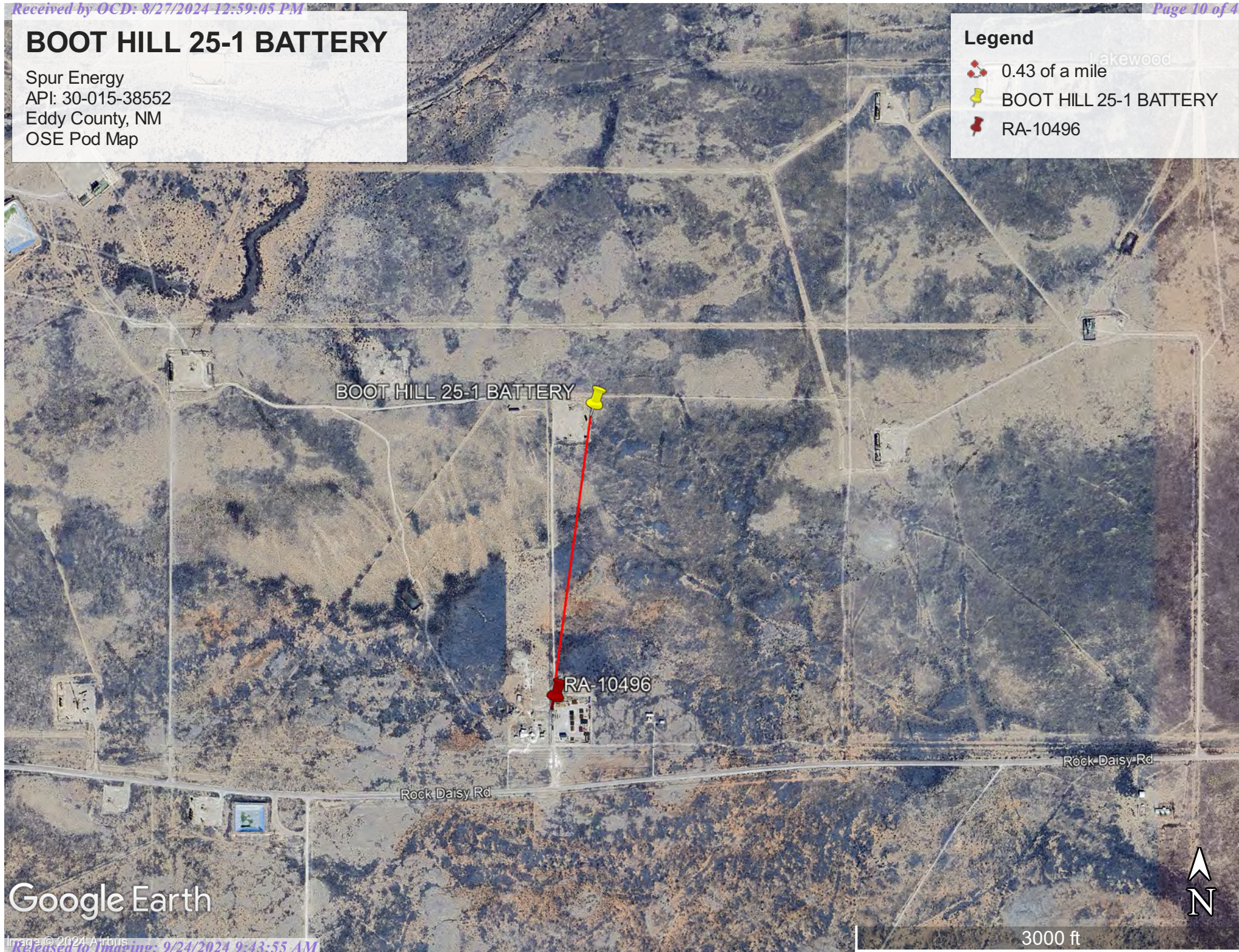


# BOOT HILL 25-1 BATTERY

Spur Energy  
API: 30-015-38552  
Eddy County, NM  
OSE Pod Map

## Legend

-  0.43 of a mile
-  BOOT HILL 25-1 BATTERY
-  RA-10496



Google Earth





[USGS Home](#)  
[Contact USGS](#)  
[Search USGS](#)

## National Water Information System: Web Interface

USGS Water Resources

Data Category:

Groundwater

Geographic Area:

United States

GO

Click to hide News Bulletins

- Explore the *NEW* [USGS National Water Dashboard](#) interactive map to access real-time water data from over 13,500 stations nationwide.

Groundwater levels for the Nation

 Important: [Next Generation Monitoring Location Page](#)

### Search Results -- 1 sites found

site\_no list =

- 323811104264301

Minimum number of levels = 1

[Save file of selected sites](#) to local disk for future upload

### USGS 323811104264301 19S.25E.25.131311

Available data for this site

Groundwater: Field measurements

GO

Eddy County, New Mexico

Hydrologic Unit Code 13060011

Latitude 32°38'11", Longitude 104°26'43" NAD27

Land-surface elevation 3,405 feet above NAVD88

The depth of the well is 552 feet below land surface.

This well is completed in the Roswell Basin aquifer system (S400RSWLBS) national aquifer.

This well is completed in the Artesia Group (313ARTS) local aquifer.

#### Output formats

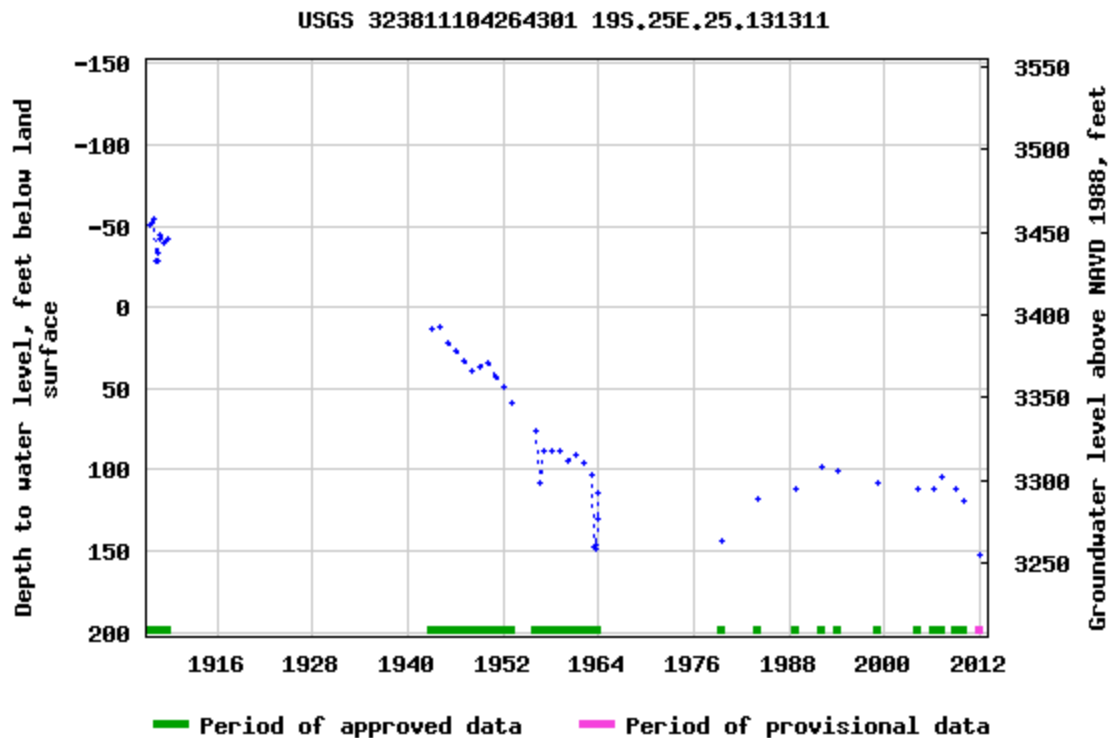
[Table of data](#)

[Tab-separated data](#)

[Graph of data](#)

[Reselect period](#)





Breaks in the plot represent a gap of at least one year between field measurements.

[Download a presentation-quality graph](#)

[Questions or Comments](#)

[Help](#)

[Data Tips](#)

[Explanation of terms](#)

[Subscribe for system changes](#)

[Accessibility](#)

[FOIA](#)

[Privacy](#)

[Policies and Notices](#)

[U.S. Department of the Interior](#) | [U.S. Geological Survey](#)

**Title: Groundwater for USA: Water Levels**

**URL: <https://nwis.waterdata.usgs.gov/nwis/gwlevels?>**



Page Contact Information: [USGS Water Data Support Team](#)

Page Last Modified: 2024-08-02 13:15:24 EDT

0.55 0.49 nadww01



# BOOT HILL 25-1 BATTERY

Spur Energy  
API: 30-015-38552  
Eddy County, NM  
USGS Map

## Legend

- 0.64 of a mile
- BOOT HILL 25-1 BATTERY
- USGS 323811104264301



Google Earth

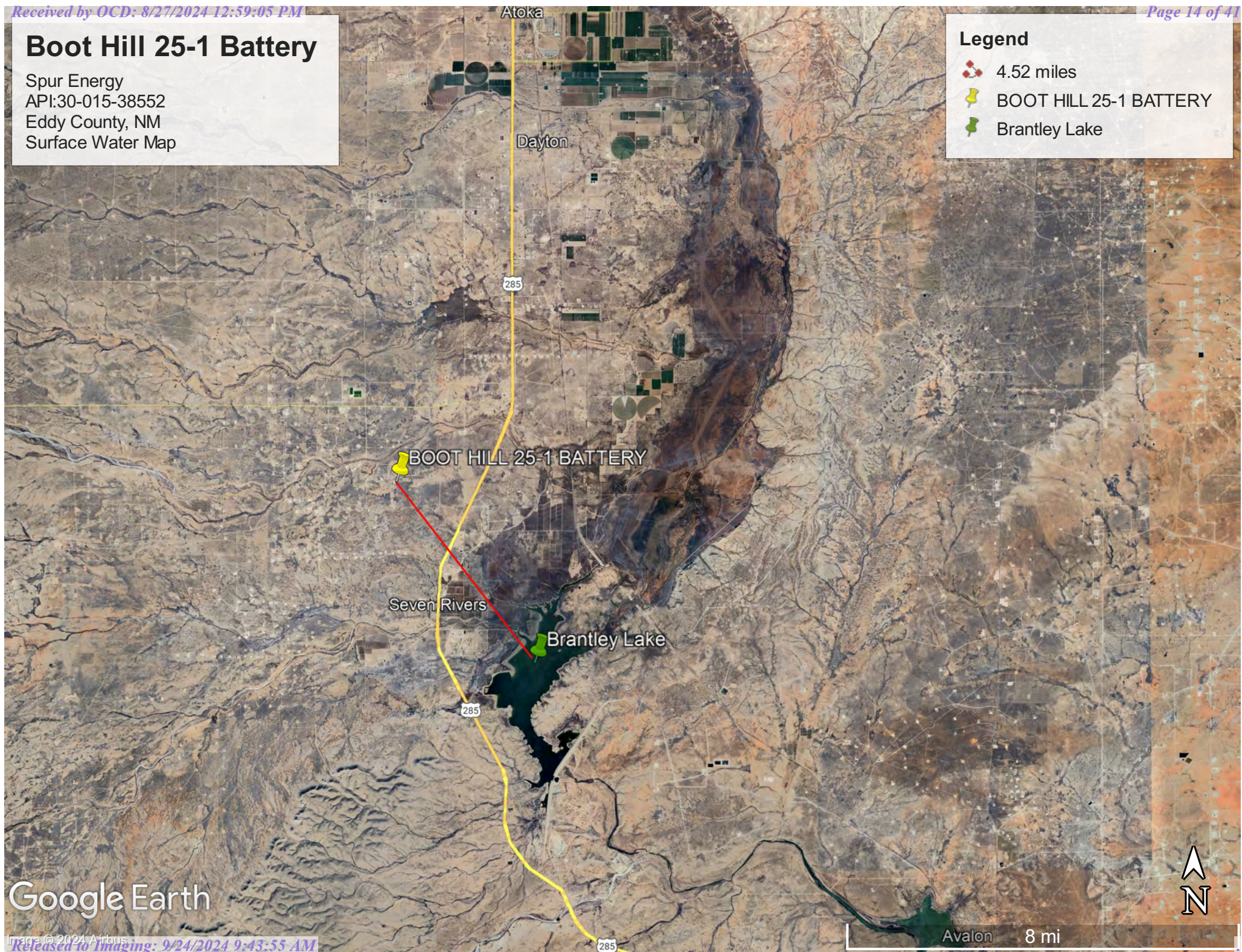


# Boot Hill 25-1 Battery

Spur Energy  
API:30-015-38552  
Eddy County, NM  
Surface Water Map

## Legend

- 4.52 miles
- BOOT HILL 25-1 BATTERY
- Brantley Lake



Google Earth



## Appendix B

- Soil Survey & Soil Maps
- Geological Data
- FEMA Flood Map
- Wetlands Map



Map Unit Description: Reagan-Upton association, 0 to 9 percent slopes---Eddy Area, New Mexico

---

## Eddy Area, New Mexico

### RE—Reagan-Upton association, 0 to 9 percent slopes

#### Map Unit Setting

*National map unit symbol:* 1w5d

*Elevation:* 1,100 to 5,400 feet

*Mean annual precipitation:* 6 to 14 inches

*Mean annual air temperature:* 60 to 64 degrees F

*Frost-free period:* 180 to 240 days

*Farmland classification:* Farmland of statewide importance

#### Map Unit Composition

*Reagan and similar soils:* 70 percent

*Upton and similar soils:* 25 percent

*Minor components:* 5 percent

*Estimates are based on observations, descriptions, and transects of the mapunit.*

#### Description of Reagan

##### Setting

*Landform:* Fan remnants, alluvial fans

*Landform position (three-dimensional):* Rise

*Down-slope shape:* Convex, linear

*Across-slope shape:* Linear

*Parent material:* Alluvium and/or eolian deposits

##### Typical profile

*H1 - 0 to 8 inches:* loam

*H2 - 8 to 60 inches:* loam

##### Properties and qualities

*Slope:* 0 to 3 percent

*Depth to restrictive feature:* More than 80 inches

*Drainage class:* Well drained

*Runoff class:* Low

*Capacity of the most limiting layer to transmit water*

*(Ksat):* Moderately high to high (0.60 to 2.00 in/hr)

*Depth to water table:* More than 80 inches

*Frequency of flooding:* None

*Frequency of ponding:* None

*Calcium carbonate, maximum content:* 40 percent

*Maximum salinity:* Very slightly saline to moderately saline (2.0 to 8.0 mmhos/cm)

*Sodium adsorption ratio, maximum:* 1.0

*Available water supply, 0 to 60 inches:* Moderate (about 8.2 inches)

##### Interpretive groups

*Land capability classification (irrigated):* 2e

*Land capability classification (nonirrigated):* 6e



Map Unit Description: Reagan-Upton association, 0 to 9 percent slopes---Eddy Area, New Mexico

---

*Hydrologic Soil Group:* B  
*Ecological site:* R042CY153NM - Loamy  
*Hydric soil rating:* No

### Description of Upton

#### Setting

*Landform:* Ridges, fans  
*Landform position (three-dimensional):* Side slope, rise  
*Down-slope shape:* Convex  
*Across-slope shape:* Convex  
*Parent material:* Residuum weathered from limestone

#### Typical profile

*H1 - 0 to 9 inches:* gravelly loam  
*H2 - 9 to 13 inches:* gravelly loam  
*H3 - 13 to 21 inches:* cemented  
*H4 - 21 to 60 inches:* very gravelly loam

#### Properties and qualities

*Slope:* 0 to 9 percent  
*Depth to restrictive feature:* 7 to 20 inches to petrocalcic  
*Drainage class:* Well drained  
*Runoff class:* High  
*Capacity of the most limiting layer to transmit water (Ksat):* Low to moderately high (0.01 to 0.60 in/hr)  
*Depth to water table:* More than 80 inches  
*Frequency of flooding:* None  
*Frequency of ponding:* None  
*Calcium carbonate, maximum content:* 75 percent  
*Maximum salinity:* Nonsaline to very slightly saline (0.0 to 2.0 mmhos/cm)  
*Sodium adsorption ratio, maximum:* 1.0  
*Available water supply, 0 to 60 inches:* Very low (about 1.4 inches)

#### Interpretive groups

*Land capability classification (irrigated):* None specified  
*Land capability classification (nonirrigated):* 7s  
*Hydrologic Soil Group:* D  
*Ecological site:* R042CY159NM - Shallow Loamy  
*Hydric soil rating:* No

### Minor Components

#### Atoka

*Percent of map unit:* 3 percent  
*Ecological site:* R070BC007NM - Loamy  
*Hydric soil rating:* No

#### Pima

*Percent of map unit:* 2 percent  
*Ecological site:* R070BC017NM - Bottomland



Map Unit Description: Reagan-Upton association, 0 to 9 percent slopes---Eddy Area, New Mexico

---

*Hydric soil rating:* No

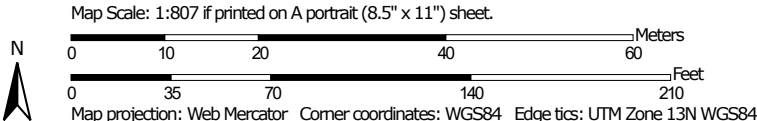
## Data Source Information

Soil Survey Area: Eddy Area, New Mexico  
Survey Area Data: Version 19, Sep 7, 2023

Soil Map—Eddy Area, New Mexico



Soil Map may not be valid at this scale.



Natural Resources  
Conservation Service

Web Soil Survey  
National Cooperative Soil Survey

8/2/2024  
Page 1 of 3



## Soil Map—Eddy Area, New Mexico

## MAP LEGEND

## Area of Interest (AOI)

 Area of Interest (AOI)

## Soils

 Soil Map Unit Polygons

 Soil Map Unit Lines

 Soil Map Unit Points

## Special Point Features



Blowout



Borrow Pit



Clay Spot



Closed Depression



Gravel Pit



Gravelly Spot



Landfill



Lava Flow



Marsh or swamp



Mine or Quarry



Miscellaneous Water



Perennial Water



Rock Outcrop



Saline Spot



Sandy Spot



Severely Eroded Spot



Sinkhole



Slide or Slip



Sodic Spot



Spoil Area



Stony Spot



Very Stony Spot



Wet Spot



Other



Special Line Features

## Water Features



Streams and Canals

## Transportation



Rails



Interstate Highways



US Routes



Major Roads



Local Roads

## Background



Aerial Photography

## MAP INFORMATION

The soil surveys that comprise your AOI were mapped at 1:20,000.

Warning: Soil Map may not be valid at this scale.

Enlargement of maps beyond the scale of mapping can cause misunderstanding of the detail of mapping and accuracy of soil line placement. The maps do not show the small areas of contrasting soils that could have been shown at a more detailed scale.

Please rely on the bar scale on each map sheet for map measurements.

Source of Map: Natural Resources Conservation Service

Web Soil Survey URL:

Coordinate System: Web Mercator (EPSG:3857)

Maps from the Web Soil Survey are based on the Web Mercator projection, which preserves direction and shape but distorts distance and area. A projection that preserves area, such as the Albers equal-area conic projection, should be used if more accurate calculations of distance or area are required.

This product is generated from the USDA-NRCS certified data as of the version date(s) listed below.

Soil Survey Area: Eddy Area, New Mexico

Survey Area Data: Version 19, Sep 7, 2023

Soil map units are labeled (as space allows) for map scales 1:50,000 or larger.

Date(s) aerial images were photographed: Nov 12, 2022—Dec 2, 2022

The orthophoto or other base map on which the soil lines were compiled and digitized probably differs from the background imagery displayed on these maps. As a result, some minor shifting of map unit boundaries may be evident.

Map Unit Legend

Map Unit Symbol	Map Unit Name	Acres in AOI	Percent of AOI
RE	Reagan-Upton association, 0 to 9 percent slopes	2.9	100.0%
Totals for Area of Interest		2.9	100.0%



(<https://www.usgs.gov/>)

Mineral Resources (<https://www.usgs.gov/energy-and-minerals/mineral-resources-program>)  
/ Online Spatial Data (/) / Geology (/geology/) / by state (/geology/state/)  
/ New Mexico (/geology/state/state.php?state=NM)

Piedmont alluvial deposits

XML (/geology/state/xml/NMQp;0)

JSON (/geology/state/json/NMQp;0)

Shapefile (/geology/state/unit-shape.php?unit=NMQp;0)

*Includes deposits of higher gradient tributaries bordering major stream valleys, alluvial veneers of the piedmont slope, and alluvial fans. May locally include uppermost Pliocene deposits.*

State	New Mexico (/geology/state/state.php?state=NM)
Name	Piedmont alluvial deposits
Geologic age	Holocene to lower Pleistocene
Lithologic constituents	Major Unconsolidated (Alluvial) Includes deposits of higher gradient tributaries bordering major stream valleys, alluvial veneers of the piedmont slope, and alluvial fans
References	Green, G.N., Jones, G.E., and Anderson, O.J., 1997, The Digital Geologic Map of New Mexico in ARC/INFO Format: U.S. Geological Survey Open-File Report 97-0052, 9 p., scale 1:500,000. <a href="https://pubs.er.usgs.gov/publication/ofr9752">https://pubs.er.usgs.gov/publication/ofr9752</a> ( <a href="https://pubs.er.usgs.gov/publication/ofr9752">https://pubs.er.usgs.gov/publication/ofr9752</a> )
NGMDB product	NGMDB product page for 59219 ( <a href="https://ngmdb.usgs.gov/Prodesc/proddesc_59219.htm">https://ngmdb.usgs.gov/Prodesc/proddesc_59219.htm</a> ) NGMDB product page for 22974 ( <a href="https://ngmdb.usgs.gov/Prodesc/proddesc_22974.htm">https://ngmdb.usgs.gov/Prodesc/proddesc_22974.htm</a> )



**Counties**

Bernalillo (/geology/state/fips-unit.php?code=f35001) - Catron (/geology/state/fips-unit.php?code=f35003) - Chaves (/geology/state/fips-unit.php?code=f35005) - Colfax (/geology/state/fips-unit.php?code=f35007) - DeBaca (/geology/state/fips-unit.php?code=f35011) - Dona Ana (/geology/state/fips-unit.php?code=f35013) - Eddy (/geology/state/fips-unit.php?code=f35015) - Grant (/geology/state/fips-unit.php?code=f35017) - Guadalupe (/geology/state/fips-unit.php?code=f35019) - Hidalgo (/geology/state/fips-unit.php?code=f35023) - Lea (/geology/state/fips-unit.php?code=f35025) - Lincoln (/geology/state/fips-unit.php?code=f35027) - Los Alamos (/geology/state/fips-unit.php?code=f35028) - Luna (/geology/state/fips-unit.php?code=f35029) - Mora (/geology/state/fips-unit.php?code=f35033) - Otero (/geology/state/fips-unit.php?code=f35035) - Quay (/geology/state/fips-unit.php?code=f35037) - Rio Arriba (/geology/state/fips-unit.php?code=f35039) - Roosevelt (/geology/state/fips-unit.php?code=f35041) - Sandoval (/geology/state/fips-unit.php?code=f35043) - San Miguel (/geology/state/fips-unit.php?code=f35047) - Santa Fe (/geology/state/fips-unit.php?code=f35049) - Sierra (/geology/state/fips-unit.php?code=f35051) - Socorro (/geology/state/fips-unit.php?code=f35053) - Taos (/geology/state/fips-unit.php?code=f35055) - Torrance (/geology/state/fips-unit.php?code=f35057) - Valencia (/geology/state/fips-unit.php?code=f35061)

---

DOI Privacy Policy (<https://www.doi.gov/privacy>) | Legal ([https://www.usgs.gov/laws/policies\\_notices.html](https://www.usgs.gov/laws/policies_notices.html)) |

Accessibility (<https://www2.usgs.gov/laws/accessibility.html>) | Site Map (<https://www.usgs.gov/sitemap.html>) |

Contact USGS (<https://answers.usgs.gov/>)

---

U.S. Department of the Interior (<https://www.doi.gov/>) | DOI Inspector General (<https://www.doi.gov/ig/>) |

White House (<https://www.whitehouse.gov/>) | E-gov (<https://www.whitehouse.gov/omb/management/egov/>) |




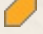

No Fear Act (<https://www.doi.gov/pmb/eeo/no-fear-act>) | FOIA (<https://www2.usgs.gov/foia>)

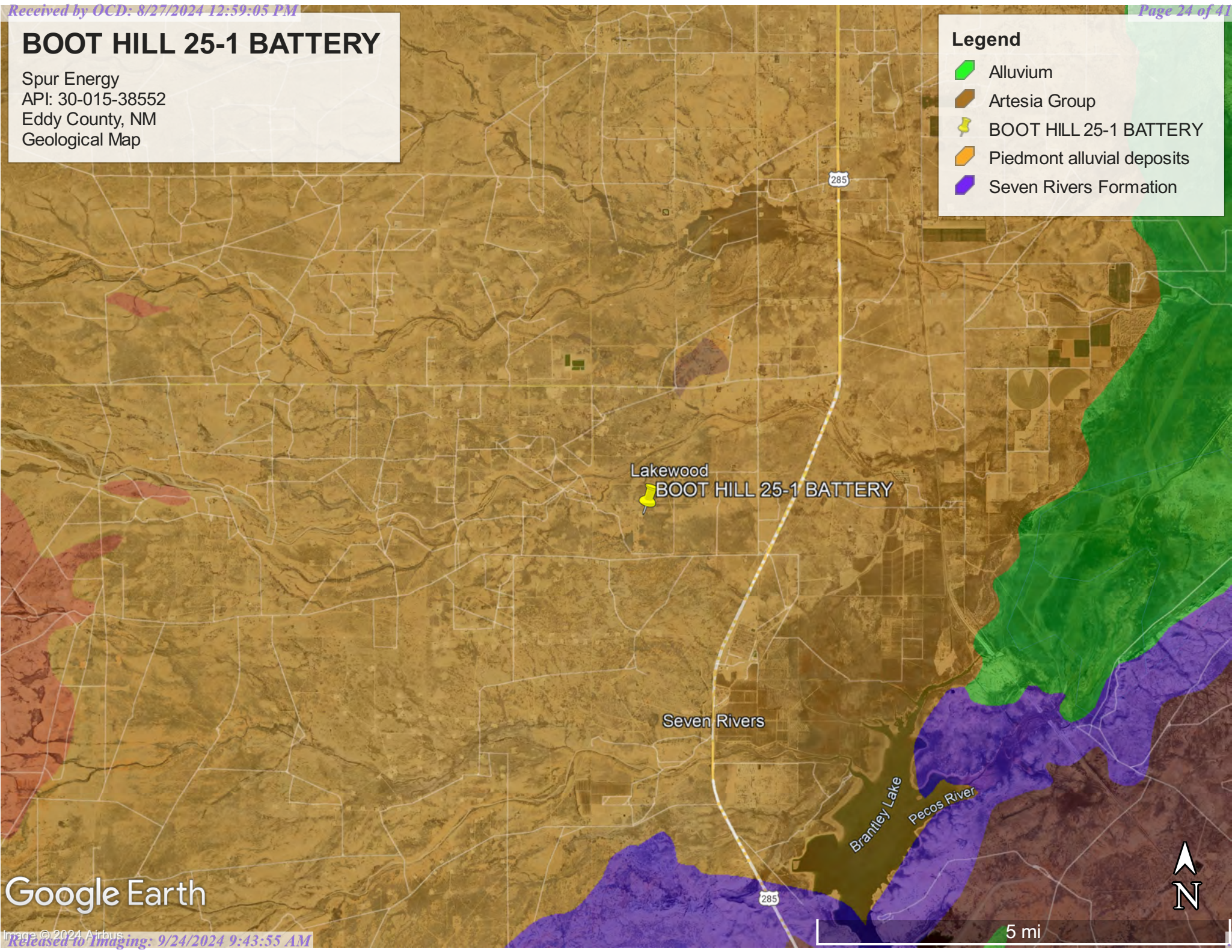


# BOOT HILL 25-1 BATTERY

Spur Energy  
API: 30-015-38552  
Eddy County, NM  
Geological Map

## Legend

-  Alluvium
-  Artesia Group
-  BOOT HILL 25-1 BATTERY
-  Piedmont alluvial deposits
-  Seven Rivers Formation



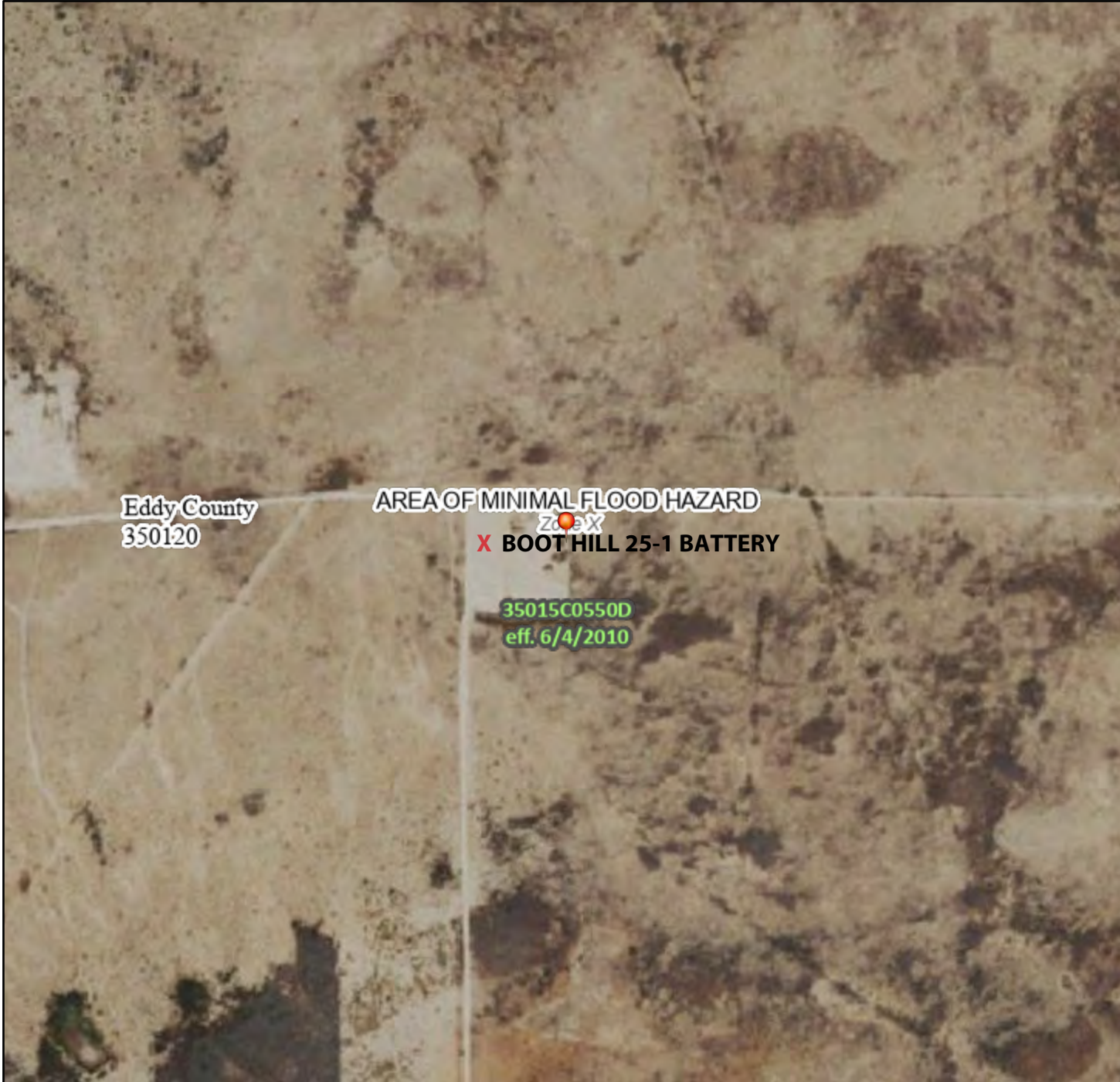
Google Earth



# National Flood Hazard Layer FIRMette



104°26'29"W 32°38'8"N



0 250 500 1,000 1,500 2,000 Feet

1:6,000

104°25'52"W 32°37'37"N

Released to Imaging: 9/24/2024 9:43:55 AM

Basemap Imagery Source: USGS National Map 2023

## Legend

SEE FIS REPORT FOR DETAILED LEGEND AND INDEX MAP FOR FIRM PANEL LAYOUT

SPECIAL FLOOD HAZARD AREAS		Without Base Flood Elevation (BFE) Zone A, V, A99
		With BFE or Depth Zone AE, AO, AH, VE, AR
		Regulatory Floodway
OTHER AREAS OF FLOOD HAZARD		0.2% Annual Chance Flood Hazard, Areas of 1% annual chance flood with average depth less than one foot or with drainage areas of less than one square mile Zone X
		Future Conditions 1% Annual Chance Flood Hazard Zone X
		Area with Reduced Flood Risk due to Levee. See Notes. Zone X
		Area with Flood Risk due to Levee Zone D
OTHER AREAS		NO SCREEN Area of Minimal Flood Hazard Zone X
		Effective LOMRs
		Area of Undetermined Flood Hazard Zone D
GENERAL STRUCTURES		Channel, Culvert, or Storm Sewer
		Levee, Dike, or Floodwall
OTHER FEATURES		20.2 Cross Sections with 1% Annual Chance Water Surface Elevation
		17.5 Coastal Transect
		Base Flood Elevation Line (BFE)
		Limit of Study
		Jurisdiction Boundary
		Coastal Transect Baseline
		Profile Baseline
MAP PANELS		Digital Data Available
		No Digital Data Available
		Unmapped



The pin displayed on the map is an approximate point selected by the user and does not represent an authoritative property location.

This map complies with FEMA's standards for the use of digital flood maps if it is not void as described below. The basemap shown complies with FEMA's basemap accuracy standards

The flood hazard information is derived directly from the authoritative NFHL web services provided by FEMA. This map was exported on 8/2/2024 at 1:55 PM and does not reflect changes or amendments subsequent to this date and time. The NFHL and effective information may change or become superseded by new data over time.

This map image is void if the one or more of the following map elements do not appear: basemap imagery, flood zone labels, legend, scale bar, map creation date, community identifiers, FIRM panel number, and FIRM effective date. Map images for unmapped and unmodernized areas cannot be used for regulatory purposes.





## Wetlands Map



August 2, 2024

**Wetlands**

- Estuarine and Marine Deepwater
- Estuarine and Marine Wetland

- Freshwater Emergent Wetland
- Freshwater Forested/Shrub Wetland
- Freshwater Pond

- Lake
- Other
- Riverine

This map is for general reference only. The US Fish and Wildlife Service is not responsible for the accuracy or currentness of the base data shown on this map. All wetlands related data should be used in accordance with the layer metadata found on the Wetlands Mapper web site.



## Appendix C

- 48-Hour Notification
- Liner Inspection Form



**Sebastian@pimaoil.com**

---

**From:** OCDOnline@state.nm.us  
**Sent:** Tuesday, August 13, 2024 4:06 PM  
**To:** sebastian@pimaoil.com  
**Subject:** The Oil Conservation Division (OCD) has accepted the application, Application ID: 373566

To whom it may concern (c/o Sebastian Orozco for Spur Energy Partners LLC),

The OCD has received the submitted *Notification for Liner Inspection for a Release* (C-141L), for incident ID (n#) nAPP2420443181.

The liner inspection is expected to take place:

**When:** 08/15/2024 @ 16:15

**Where:** J-25-19S-25E 0 FNL 0 FEL (32.63128,-104.43617)

**Additional Information:** Marisa Loya  
575-416-0639

**Additional Instructions:** 32.632548,-104.445854

An OCD representative may be available onsite at the date and time reported. In the absence or presence of an OCD representative, liner inspection pursuant to 19.15.29.11.A(5)(a) NMAC is required. Should there be a change in the scheduled date and time of the sampling event, then another notification should be resubmitted through OCD permitting as soon as possible.

- **Failure to notify the OCD of liner inspections including any changes in date/time per the requirements of 19.15.29.11.A(5)(a)(ii) NMAC, may result in the inspection not being accepted.**

If you have any questions regarding this application, or don't know why you have received this email, please contact us.

**New Mexico Energy, Minerals and Natural Resources Department**  
1220 South St. Francis Drive  
Santa Fe, NM 87505



Pima Environmental Services, LLC

**Liner Inspection Form**Company Name: Spur EnergySite: Boot Hill 25-1 BatteryLat/Long: 32.632548,-104.44584

NMOCD Incident ID

& Incident Date: NAPP2420443181 07/22/2024

2-Day Notification

Sent: via Email by Sebastian Orozco on OCD portal 08/13/2024.Inspection Date: 08/15/2024

Liner Type:      Earthen w/liner                      Earthen no liner                      Polystar

**Steel w/poly liner**                      Steel w/spray epoxy                      No Liner

Other: \_\_\_\_\_

Visualization	Yes	No	Comments
Is there a tear in the liner?		X	
Are there holes in the liner?		X	
Is the liner retaining any fluids?	X		Fluid from power washing.
Does the liner have integrity to contain a leak?	X		

Comments: \_\_\_\_\_

Inspector Name: Marisa Loya      Inspector Signature: Marisa Loya





## Appendix D

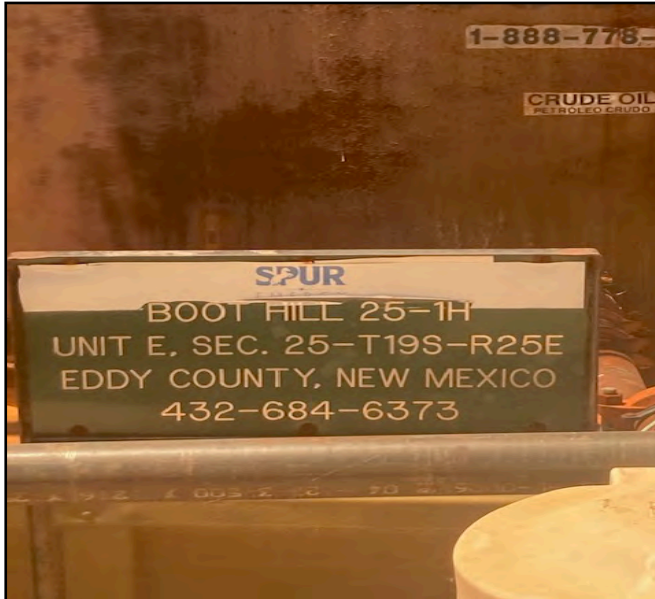
### ○ Photographic Documentation



## PHOTOGRAPHIC DOCUMENTATION

SITE NAME: Boot Hill 25-1H

PHOTO LOG TYPE: Pre Wash



Site information.



Photograph documenting the assessment of the liner facing North.



Photograph documenting the assessment of the liner facing East.



Photograph documenting the assessment of the liner facing East.





Photograph documenting the assessment of the liner facing South.



Photograph documenting the assessment of the liner facing South.



Photograph documenting the assessment of the liner facing West.



Photograph documenting the assessment of the liner facing West.



Photograph documenting the assessment of the liner facing North.





PHOTO LOG TYPE: Liner Inspection-Post Wash



Photograph depicting the liner post-power washing facing East.



Photograph depicting the liner post-power washing facing North.



Photograph depicting the liner post-power washing facing West.



Photograph depicting the liner post-power washing facing West.



Photograph depicting the liner post-power washing facing South.



Photograph depicting the liner post-power washing facing South.



**District I**  
1625 N. French Dr., Hobbs, NM 88240  
Phone:(575) 393-6161 Fax:(575) 393-0720  
**District II**  
811 S. First St., Artesia, NM 88210  
Phone:(575) 748-1283 Fax:(575) 748-9720  
**District III**  
1000 Rio Brazos Rd., Aztec, NM 87410  
Phone:(505) 334-6178 Fax:(505) 334-6170  
**District IV**  
1220 S. St Francis Dr., Santa Fe, NM 87505  
Phone:(505) 476-3470 Fax:(505) 476-3462

**State of New Mexico**  
**Energy, Minerals and Natural Resources**  
**Oil Conservation Division**  
**1220 S. St Francis Dr.**  
**Santa Fe, NM 87505**

QUESTIONS  
  
Action 378375

QUESTIONS

Operator: Spur Energy Partners LLC 9655 Katy Freeway Houston, TX 77024	OGRID:	328947
	Action Number:	378375
	Action Type:	
	[C-141] Remediation Closure Request C-141 (C-141-v-Closure)	

QUESTIONS

Prerequisites	
Incident ID (n#)	nAPP2420443181
Incident Name	NAPP2420443181 BOOT HILL 25-1 BATTERY @ 30-015-38552
Incident Type	Release Other
Incident Status	Remediation Closure Report Received
Incident Well	[30-015-38552] BOOT HILL 25 #001H

Location of Release Source	
Please answer all the questions in this group.	
Site Name	BOOT HILL 25-1 BATTERY
Date Release Discovered	07/22/2024
Surface Owner	Federal

Incident Details	
Please answer all the questions in this group.	
Incident Type	Release Other
Did this release result in a fire or is the result of a fire	No
Did this release result in any injuries	No
Has this release reached or does it have a reasonable probability of reaching a watercourse	No
Has this release endangered or does it have a reasonable probability of endangering public health	No
Has this release substantially damaged or will it substantially damage property or the environment	No
Is this release of a volume that is or may with reasonable probability be detrimental to fresh water	No

Nature and Volume of Release	
Material(s) released, please answer all that apply below. Any calculations or specific justifications for the volumes provided should be attached to the follow-up C-141 submission.	
Crude Oil Released (bbls) Details	Cause: Corrosion   Flow Line - Production   Crude Oil   Released: 5 BBL   Recovered: 5 BBL   Lost: 0 BBL.
Produced Water Released (bbls) Details	Cause: Corrosion   Flow Line - Production   Produced Water   Released: 25 BBL   Recovered: 25 BBL   Lost: 0 BBL.
Is the concentration of chloride in the produced water >10,000 mg/l	No
Condensate Released (bbls) Details	Not answered.
Natural Gas Vented (Mcf) Details	Not answered.
Natural Gas Flared (Mcf) Details	Not answered.
Other Released Details	Not answered.
Are there additional details for the questions above (i.e. any answer containing Other, Specify, Unknown, and/or Fire, or any negative lost amounts)	FLOW LINE DEVELOPED HOLE DUE TO CORROSION RELEASING A MIX OF OIL AND PW INTO LINED CONTAINMENT

**District I**

1625 N. French Dr., Hobbs, NM 88240  
Phone:(575) 393-6161 Fax:(575) 393-0720

**District II**

811 S. First St., Artesia, NM 88210  
Phone:(575) 748-1283 Fax:(575) 748-9720

**District III**

1000 Rio Brazos Rd., Aztec, NM 87410  
Phone:(505) 334-6178 Fax:(505) 334-6170

**District IV**

1220 S. St Francis Dr., Santa Fe, NM 87505  
Phone:(505) 476-3470 Fax:(505) 476-3462

**State of New Mexico**  
**Energy, Minerals and Natural Resources**  
**Oil Conservation Division**  
**1220 S. St Francis Dr.**  
**Santa Fe, NM 87505**

QUESTIONS, Page 2

Action 378375

**QUESTIONS (continued)**

Operator: Spur Energy Partners LLC 9655 Katy Freeway Houston, TX 77024	OGRID:
	328947
	Action Number:
	378375
	Action Type:
	[C-141] Remediation Closure Request C-141 (C-141-v-Closure)

**QUESTIONS**

Nature and Volume of Release (continued)	
Is this a gas only submission (i.e. only significant Mcf values reported)	No, according to supplied volumes this does not appear to be a "gas only" report.
Was this a major release as defined by Subsection A of 19.15.29.7 NMAC	Yes
Reasons why this would be considered a submission for a notification of a major release	From paragraph A. "Major release" determine using: (1) an unauthorized release of a volume, excluding gases, of 25 barrels or more.
With the implementation of the 19.15.27 NMAC (05/25/2021), venting and/or flaring of natural gas (i.e. gas only) are to be submitted on the C-129 form.	

**Initial Response**

The responsible party must undertake the following actions immediately unless they could create a safety hazard that would result in injury.

The source of the release has been stopped	True
The impacted area has been secured to protect human health and the environment	True
Released materials have been contained via the use of berms or dikes, absorbent pads, or other containment devices	True
All free liquids and recoverable materials have been removed and managed appropriately	True
If all the actions described above have not been undertaken, explain why	N/A

Per Paragraph (4) of Subsection B of 19.15.29.8 NMAC the responsible party may commence remediation immediately after discovery of a release. If remediation has begun, please prepare and attach a narrative of actions to date in the follow-up C-141 submission. If remedial efforts have been successfully completed or if the release occurred within a lined containment area (see Subparagraph (a) of Paragraph (5) of Subsection A of 19.15.29.11 NMAC), please prepare and attach all information needed for closure evaluation in the follow-up C-141 submission.

I hereby certify that the information given above is true and complete to the best of my knowledge and understand that pursuant to OCD rules and regulations all operators are required to report and/or file certain release notifications and perform corrective actions for releases which may endanger public health or the environment. The acceptance of a C-141 report by the OCD does not relieve the operator of liability should their operations have failed to adequately investigate and remediate contamination that pose a threat to groundwater, surface water, human health or the environment. In addition, OCD acceptance of a C-141 report does not relieve the operator of responsibility for compliance with any other federal, state, or local laws and/or regulations.

I hereby agree and sign off to the above statement	Name: Katherine Purvis Title: EHS Coordinator Email: katherine.purvis@spurenergy.com Date: 07/22/2024
--	--



**District I**

1625 N. French Dr., Hobbs, NM 88240  
Phone:(575) 393-6161 Fax:(575) 393-0720

**District II**

811 S. First St., Artesia, NM 88210  
Phone:(575) 748-1283 Fax:(575) 748-9720

**District III**

1000 Rio Brazos Rd., Aztec, NM 87410  
Phone:(505) 334-6178 Fax:(505) 334-6170

**District IV**

1220 S. St Francis Dr., Santa Fe, NM 87505  
Phone:(505) 476-3470 Fax:(505) 476-3462

**State of New Mexico**  
**Energy, Minerals and Natural Resources**  
**Oil Conservation Division**  
**1220 S. St Francis Dr.**  
**Santa Fe, NM 87505**

QUESTIONS, Page 3

Action 378375

**QUESTIONS (continued)**

Operator: Spur Energy Partners LLC 9655 Katy Freeway Houston, TX 77024	OGRID:	328947
	Action Number:	378375
	Action Type:	[C-141] Remediation Closure Request C-141 (C-141-v-Closure)

**QUESTIONS****Site Characterization**

Please answer all the questions in this group (only required when seeking remediation plan approval and beyond). This information must be provided to the appropriate district office no later than 90 days after the release discovery date.

What is the shallowest depth to groundwater beneath the area affected by the release in feet below ground surface (ft bgs)	Between 100 and 500 (ft.)
What method was used to determine the depth to ground water	U.S. Geological Survey
Did this release impact groundwater or surface water	No
<b>What is the minimum distance, between the closest lateral extents of the release and the following surface areas:</b>	
A continuously flowing watercourse or any other significant watercourse	Between ½ and 1 (mi.)
Any lakebed, sinkhole, or playa lake (measured from the ordinary high-water mark)	Between ½ and 1 (mi.)
An occupied permanent residence, school, hospital, institution, or church	Between 1 and 5 (mi.)
A spring or a private domestic fresh water well used by less than five households for domestic or stock watering purposes	Between ½ and 1 (mi.)
Any other fresh water well or spring	Between ½ and 1 (mi.)
Incorporated municipal boundaries or a defined municipal fresh water well field	Between 1 and 5 (mi.)
A wetland	Between ½ and 1 (mi.)
A subsurface mine	Between 1 and 5 (mi.)
An (non-karst) unstable area	Between ½ and 1 (mi.)
Categorize the risk of this well / site being in a karst geology	Medium
A 100-year floodplain	Between ½ and 1 (mi.)
Did the release impact areas not on an exploration, development, production, or storage site	No

**Remediation Plan**

Please answer all the questions that apply or are indicated. This information must be provided to the appropriate district office no later than 90 days after the release discovery date.

Requesting a remediation plan approval with this submission	Yes
Attach a comprehensive report demonstrating the lateral and vertical extents of soil contamination associated with the release have been determined, pursuant to 19.15.29.11 NMAC and 19.15.29.13 NMAC.	
Have the lateral and vertical extents of contamination been fully delineated	Yes
Was this release entirely contained within a lined containment area	Yes
Per Subsection B of 19.15.29.11 NMAC unless the site characterization report includes completed efforts at remediation, the report must include a proposed remediation plan in accordance with 19.15.29.12 NMAC, which includes the anticipated timelines for beginning and completing the remediation.	
On what estimated date will the remediation commence	08/15/2024
On what date will (or did) the final sampling or liner inspection occur	08/15/2024
On what date will (or was) the remediation complete(d)	08/15/2024
What is the estimated surface area (in square feet) that will be remediated	500
What is the estimated volume (in cubic yards) that will be remediated	0
These estimated dates and measurements are recognized to be the best guess or calculation at the time of submission and may (be) change(d) over time as more remediation efforts are completed.	
The OCD recognizes that proposed remediation measures may have to be minimally adjusted in accordance with the physical realities encountered during remediation. If the responsible party has any need to significantly deviate from the remediation plan proposed, then it should consult with the division to determine if another remediation plan submission is required.	

**District I**

1625 N. French Dr., Hobbs, NM 88240  
Phone:(575) 393-6161 Fax:(575) 393-0720

**District II**

811 S. First St., Artesia, NM 88210  
Phone:(575) 748-1283 Fax:(575) 748-9720

**District III**

1000 Rio Brazos Rd., Aztec, NM 87410  
Phone:(505) 334-6178 Fax:(505) 334-6170

**District IV**

1220 S. St Francis Dr., Santa Fe, NM 87505  
Phone:(505) 476-3470 Fax:(505) 476-3462

**State of New Mexico**  
**Energy, Minerals and Natural Resources**  
**Oil Conservation Division**  
**1220 S. St Francis Dr.**  
**Santa Fe, NM 87505**

QUESTIONS, Page 4

Action 378375

**QUESTIONS (continued)**

Operator: Spur Energy Partners LLC 9655 Katy Freeway Houston, TX 77024	OGRID:
	328947
	Action Number:
	378375
Action Type:	
[C-141] Remediation Closure Request C-141 (C-141-v-Closure)	

**QUESTIONS****Remediation Plan (continued)**

Please answer all the questions that apply or are indicated. This information must be provided to the appropriate district office no later than 90 days after the release discovery date.

**This remediation will (or is expected to) utilize the following processes to remediate / reduce contaminants:**

(Select all answers below that apply.)

Is (or was) there affected material present needing to be removed	No
Is (or was) there a power wash of the lined containment area (to be) performed	Yes
OTHER (Non-listed remedial process)	Not answered.

Per Subsection B of 19.15.29.11 NMAC unless the site characterization report includes completed efforts at remediation, the report must include a proposed remediation plan in accordance with 19.15.29.12 NMAC, which includes the anticipated timelines for beginning and completing the remediation.

I hereby certify that the information given above is true and complete to the best of my knowledge and understand that pursuant to OCD rules and regulations all operators are required to report and/or file certain release notifications and perform corrective actions for releases which may endanger public health or the environment. The acceptance of a C-141 report by the OCD does not relieve the operator of liability should their operations have failed to adequately investigate and remediate contamination that pose a threat to groundwater, surface water, human health or the environment. In addition, OCD acceptance of a C-141 report does not relieve the operator of responsibility for compliance with any other federal, state, or local laws and/or regulations.

I hereby agree and sign off to the above statement	Name: Katherine Purvis Title: EHS Coordinator Email: katherine.purvis@spurenergy.com Date: 08/27/2024
--	--

The OCD recognizes that proposed remediation measures may have to be minimally adjusted in accordance with the physical realities encountered during remediation. If the responsible party has any need to significantly deviate from the remediation plan proposed, then it should consult with the division to determine if another remediation plan submission is required.



**District I**

1625 N. French Dr., Hobbs, NM 88240  
Phone:(575) 393-6161 Fax:(575) 393-0720

**District II**

811 S. First St., Artesia, NM 88210  
Phone:(575) 748-1283 Fax:(575) 748-9720

**District III**

1000 Rio Brazos Rd., Aztec, NM 87410  
Phone:(505) 334-6178 Fax:(505) 334-6170

**District IV**

1220 S. St Francis Dr., Santa Fe, NM 87505  
Phone:(505) 476-3470 Fax:(505) 476-3462

**State of New Mexico**  
**Energy, Minerals and Natural Resources**  
**Oil Conservation Division**  
**1220 S. St Francis Dr.**  
**Santa Fe, NM 87505**

QUESTIONS, Page 6

Action 378375

**QUESTIONS (continued)**

Operator: Spur Energy Partners LLC 9655 Katy Freeway Houston, TX 77024	OGRID:	328947
	Action Number:	378375
	Action Type:	[C-141] Remediation Closure Request C-141 (C-141-v-Closure)

**QUESTIONS**

<b>Liner Inspection Information</b>	
Last liner inspection notification (C-141L) recorded	<b>373566</b>
Liner inspection date pursuant to Subparagraph (a) of Paragraph (5) of Subsection A of 19.15.29.11 NMAC	<b>08/15/2024</b>
Was all the impacted materials removed from the liner	<b>Yes</b>
What was the liner inspection surface area in square feet	<b>500</b>

**Remediation Closure Request**

*Only answer the questions in this group if seeking remediation closure for this release because all remediation steps have been completed.*

Requesting a remediation closure approval with this submission	<b>Yes</b>
Have the lateral and vertical extents of contamination been fully delineated	<b>Yes</b>
Was this release entirely contained within a lined containment area	<b>Yes</b>
What was the total surface area (in square feet) remediated	<b>500</b>
What was the total volume (cubic yards) remediated	<b>0</b>
Summarize any additional remediation activities not included by answers (above)	<b>LINER WAS POWER WASHED AND INSPECTED AND FOUND TO HAVE THE ABILITY TO CONTAIN SPILLS</b>

*The responsible party must attach information demonstrating they have complied with all applicable closure requirements and any conditions or directives of the OCD. This demonstration should be in the form of a comprehensive report (in .pdf format) including a scaled site map, sampling diagrams, relevant field notes, photographs of any excavation prior to backfilling, laboratory data including chain of custody documents of final sampling, and a narrative of the remedial activities. Refer to 19.15.29.12 NMAC.*

I hereby certify that the information given above is true and complete to the best of my knowledge and understand that pursuant to OCD rules and regulations all operators are required to report and/or file certain release notifications and perform corrective actions for releases which may endanger public health or the environment. The acceptance of a C-141 report by the OCD does not relieve the operator of liability should their operations have failed to adequately investigate and remediate contamination that pose a threat to groundwater, surface water, human health or the environment. In addition, OCD acceptance of a C-141 report does not relieve the operator of responsibility for compliance with any other federal, state, or local laws and/or regulations. The responsible party acknowledges they must substantially restore, reclaim, and re-vegetate the impacted surface area to the conditions that existed prior to the release or their final land use in accordance with 19.15.29.13 NMAC including notification to the OCD when reclamation and re-vegetation are complete.

I hereby agree and sign off to the above statement	Name: Katherine Purvis Title: EHS Coordinator Email: katherine.purvis@spurenergy.com Date: 08/27/2024
--	--

**District I**  
1625 N. French Dr., Hobbs, NM 88240  
Phone:(575) 393-6161 Fax:(575) 393-0720  
**District II**  
811 S. First St., Artesia, NM 88210  
Phone:(575) 748-1283 Fax:(575) 748-9720  
**District III**  
1000 Rio Brazos Rd., Aztec, NM 87410  
Phone:(505) 334-6178 Fax:(505) 334-6170  
**District IV**  
1220 S. St Francis Dr., Santa Fe, NM 87505  
Phone:(505) 476-3470 Fax:(505) 476-3462

**State of New Mexico**  
**Energy, Minerals and Natural Resources**  
**Oil Conservation Division**  
**1220 S. St Francis Dr.**  
**Santa Fe, NM 87505**

CONDITIONS  
  
Action 378375

CONDITIONS

Operator: Spur Energy Partners LLC 9655 Katy Freeway Houston, TX 77024	OGRID: 328947
	Action Number: 378375
	Action Type: [C-141] Remediation Closure Request C-141 (C-141-v-Closure)

CONDITIONS

Created By	Condition	Condition Date
rhamlet	We have received your Remediation Closure Report for Incident #NAPP2420443181 BOOT HILL 25-1 BATTERY, thank you. This Remediation Closure Report is approved.	9/24/2024