



LINER INSPECTION CLOSURE REPORT

Incident ID NAPP2428330737

ONYXPWU 29 Battery

Facility ID fAPP2130622574

Prepared By:
Pima Environmental Services, LLC

Prepared For:
Devon Energy Production, LP

October 24, 2024
Pima Environmental Services, LLC
5614 N Lovington Hwy, Hobbs, NM 88240

October 24, 2024

NMOCD District 2
811 S. First St
Artesia, NM, 88210

**RE: Liner Inspection and Closure Report
Onyx PWU 29 Battery
Facility ID: fAPP2130622574
GPS : Latitude 32.63070272 Longitude -104.104353
UL- L, Section 29, Township 19S, Range 29E
Eddy County, NM
NMOCD Reference No. NAPP2428330737**

Devon Energy Production Company (Devon) has contracted Pima Environmental Services, LLC (Pima) to perform a liner inspection and prepare this closure report for a produced water release that occurred at the Onyx PWU 29 Battery (Onyx). This incident was assigned Incident ID:NAPP2428330737, by the New Mexico Oil Conservation Division (NMOCD).

Site Information and Site Characterization

The Onyx is located approximately fourteen (14) miles southwest of Loco Hills, NM. This spill site is in Unit L, Section 29, Township 19S, Range 29E, Latitude 32.63070272 Longitude -104.104353, Eddy County, NM. A Location Map can be found in Figure 1.

Based upon New Mexico Office of the State Engineer (CP-01231 POD 1) well water data, depth to the nearest groundwater in this area is 75 feet belowgrade surface (BGS). located approximately 1.34 miles from the Onyx. According to the United States Geological Survey (USGS 323845104075601 19S.28E.24.32233) well water data, depth to the nearest groundwater in this area is 124 feet BGS. See Appendix A for referenced water surveys and water related maps. The Onyx is in a high karst area (Figure 3). A Topographic Map can be found in Figure 2.

Release Information

NAPP2428330737: On October 8, 2024, a tank leak from the bottom caused a release in the lined containment. Approximately 6.3 barrels (bbls) of produced water were released from the bottom of tank into the lined secondary containment. A vacuum truck was dispatched and recovered approximately 6.3 bbls of fluid from the lined SPCC containment ring. Once the standing fluids were removed, the liner was visually inspected by Devon field staff for any pinholes or punctures, and none were found. Based on this inspection, there is no evidence that the spilled fluids left the containment.

A Site Map can be found in Figure 4.

Site Assessment and Liner Inspection

On October 17, 2024, Devon personnel mobilized equipment to the site to perform power washing of the liner and containment. A vacuum truck accompanied the crew to recover the power washing fluids.

On October 23, 2024, after submitting the 48-hour notification application ID: 393929 to the OCD, Pima Environmental conducted a liner inspection at this location. Pima concluded that the liner and containment maintained their integrity and successfully retained the fluids. The liner inspection form and photographic documentation can be found in Appendix C.

Closure Request

After careful review, Pima requests that this incident ID: NAPP2428330737, be closed. Devon has complied with the applicable closure requirements.

Should you have any questions or need additional information, please feel free to contact:

Devon Energy – Jim Raley at 575-689-7597 or Jim.raley@devon.com.

Pima Environmental – Gio Gomez at 806-782-1151 or Gio@pimaoil.com.

Respectfully,



Gio Gomez
Project Manager
Pima Environmental Services, LLC

Attachments

Figures:

- 1- Location Map
- 2- Topographic Map
- 3- Karst Map
- 4- Site Map

Appendices:

- Appendix A- Referenced Water Surveys
- Appendix B- Soil Survey & Soil Map, Geologic Data, FEMA, Wetlands
- Appendix C- 48 Hour Notification, Liner Inspection Form
- Appendix D- Photographic Documentation

Figures:

Figure 1- Location Map

Figure 2- Topographic Map



Figure 3- Karst Map

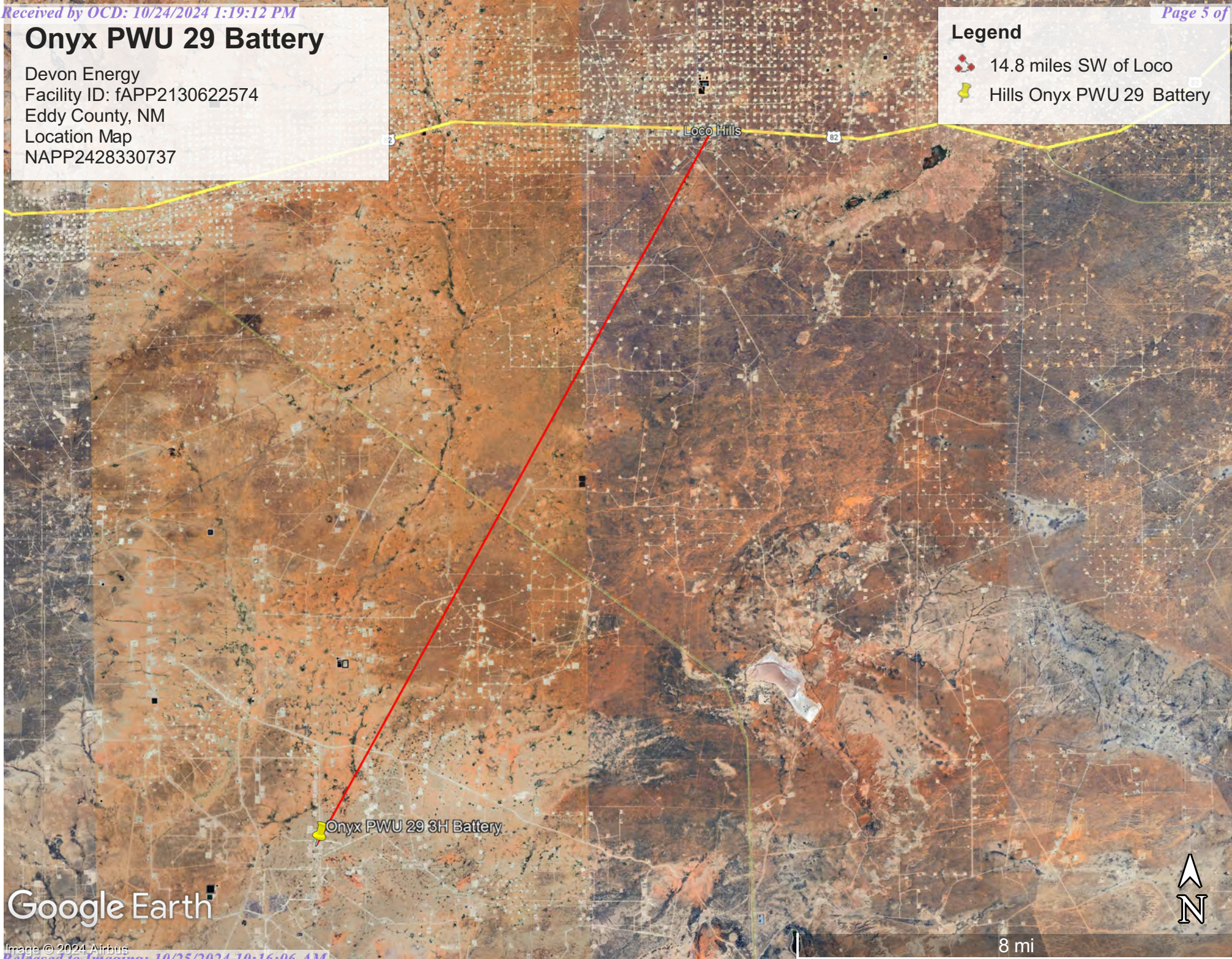
Figure 4- Site Map

Onyx PWU 29 Battery

Devon Energy
Facility ID: fAPP2130622574
Eddy County, NM
Location Map
NAPP2428330737

Legend

-  14.8 miles SW of Loco
-  Hills Onyx PWU 29 Battery



Google Earth


Image © 2024 Airbus

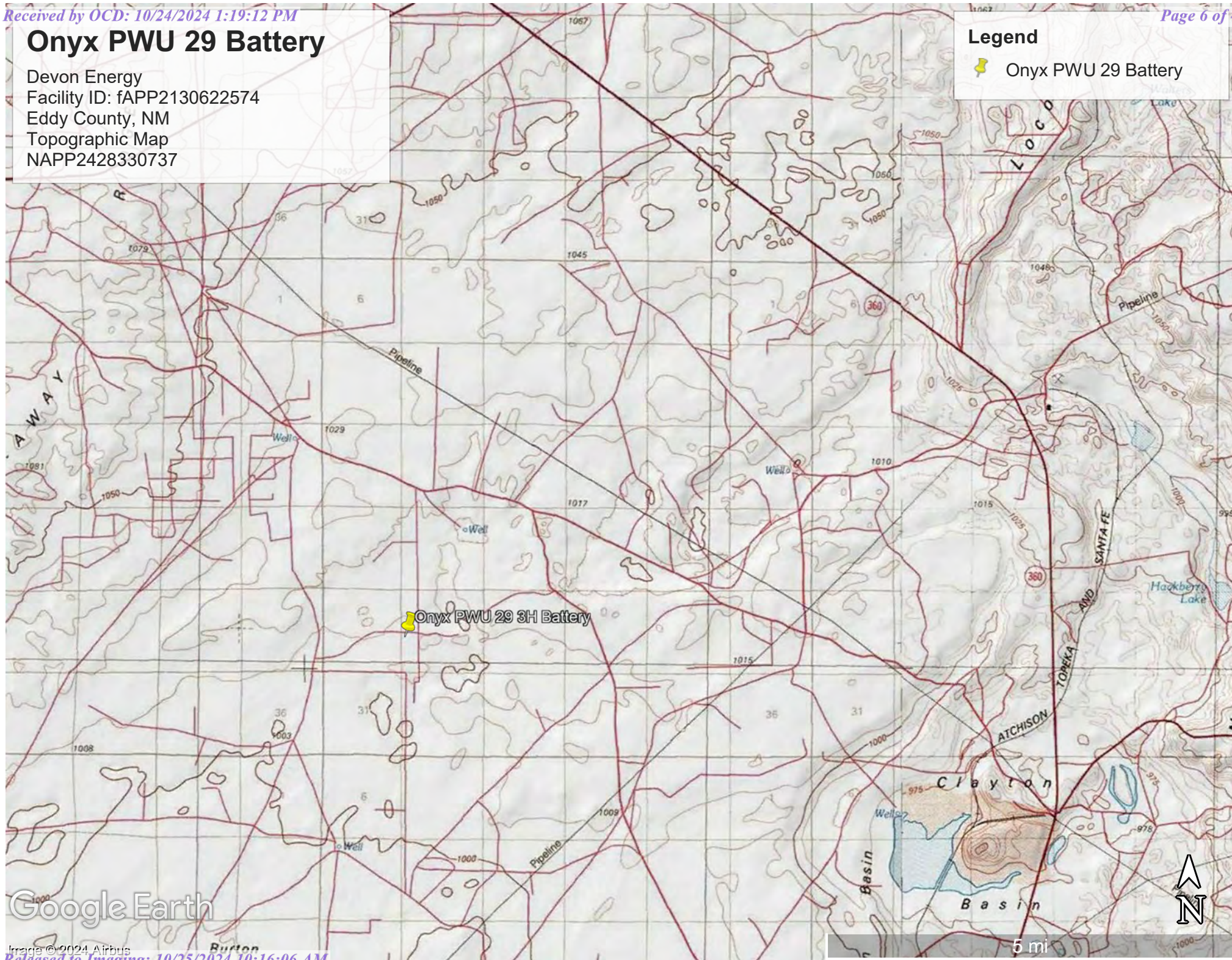
8 mi

Onyx PWU 29 Battery

Devon Energy
Facility ID: fAPP2130622574
Eddy County, NM
Topographic Map
NAPP2428330737

Legend

 Onyx PWU 29 Battery







Google Earth

Onyx PWU 29 Battery

Devon Energy
Facility ID: fAPP2130622574
Eddy County, NM
Karst Map
NAPP2428330737

Legend

-  High Karst
-  Low Karst
-  Medium Karst
-  Onyx PWU 29 3H Battery

Onyx PWU 29 3H Battery

Google Earth

Image © 2024 Airbus

Released to Imaging: 10/25/2024 10:16:06 AM






3 mi

Onyx PWU 29 Battery

Devon Energy
Facility ID: fAPP2130622574
Eddy County, NM
Site Map
NAPP2428330737

Legend

-  Onyx PWU 29 Battery
-  Onyx PWU 29 Battery 3,805 Sq ft

Onyx PWU 29 Battery 



Google Earth



100 ft

Appendix A

Water Surveys:


- OSE
- USGS
- Surface Water Map

Point of Diversion Summary

quarters are 1=NW 2=NE 3=SW 4=SE

quarters are smallest to largest

NAD83 UTM in meters

Well Tag	POD Nbr	Q64	Q16	Q4	Sec	Tws	Rng	X	Y	Map
	CP 01231 POD1	SE	SE	NE	36	19S	28E	582311.1	3609372.1	

* UTM location was derived from PLSS - see Help

Driller License:	1654	Driller Company:	NOT WORKING FOR HIRE--SIRMAN DRILLING AND CONSTRUC			
Driller Name:	JOHN SIRMAN					
Drill Start Date:	2013-10-21	Drill Finish Date:	2013-10-21			Plug Date:
Log File Date:	2013-10-29	PCW Rcv Date:				Source: Shallow
Pump Type:		Pipe Discharge Size:				Estimated Yield: 80
Casing Size:	8.00	Depth Well:	300			Depth Water: 75

Water Bearing Stratifications:

Top	Bottom	Description
200	300	Limestone/Dolomite/Chalk

Casing Perforations:

Top	Bottom
220	300

The data is furnished by the NMOSE/ISC and is accepted by the recipient with the expressed understanding that the OSE/ISC make no warranties, expressed or implied, concerning the accuracy, completeness, reliability, usability, or suitability for any particular purpose of the data.

Onyx PWU 29 Battery

Devon Energy
Facility ID: fAPP2130622574
Eddy County, NM
OSE Pod Map
NAPP2428330737

Legend

- 1.34 miles
- CP 01231 POD1
- Onyx PWU 29 3H Battery



Google Earth



[USGS Home](#)
[Contact USGS](#)
[Search USGS](#)

National Water Information System: Web Interface

USGS Water Resources

Data Category:

Groundwater

Geographic Area:

United States

GO

Click to hide News Bulletins

- Explore the *NEW* [USGS National Water Dashboard](#) interactive map to access real-time water data from over 13,500 stations nationwide.
- How are we doing? We want to hear from you. Take our quick [survey](#) to tell us what you think.

Groundwater levels for the Nation



Important: [Next Generation Monitoring Location Page](#)

Search Results -- 1 sites found

site_no list =

- 323845104075601

Minimum number of levels = 1

[Save file of selected sites](#) to local disk for future upload

USGS 323845104075601 19S.28E.24.32233

Available data for this site

Groundwater: Field measurements

GO

Eddy County, New Mexico

Hydrologic Unit Code 13060011

Latitude 32°38'45", Longitude 104°07'56" NAD27

Land-surface elevation 3,352 feet above NAVD88

This well is completed in the Other aquifers (N9999OTHER) national aquifer.

This well is completed in the Rustler Formation (312RSLR) local aquifer.

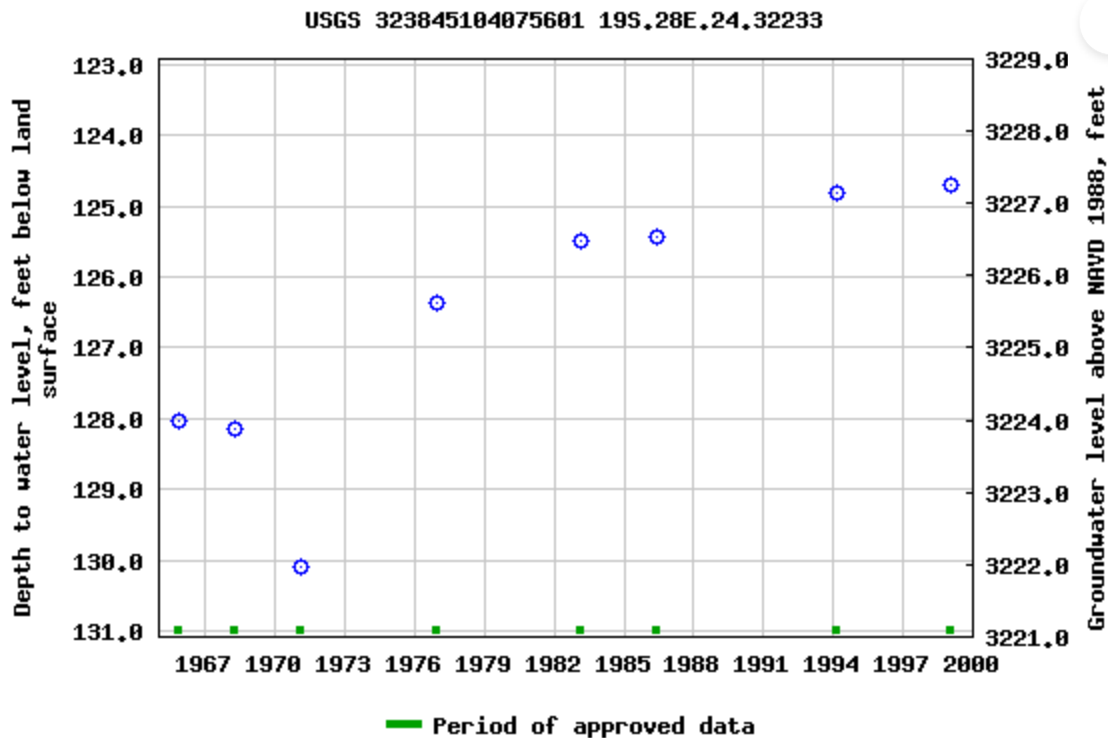
Output formats

[Table of data](#)

[Tab-separated data](#)

[Graph of data](#)

[Reselect period](#)



Breaks in the plot represent a gap of at least one year between field measurements.

[Download a presentation-quality graph](#)

[Questions or Comments](#)

[Help](#)

[Data Tips](#)

[Explanation of terms](#)

[Subscribe for system changes](#)

[Accessibility](#) [FOIA](#) [Privacy](#) [Policies and Notices](#)

[U.S. Department of the Interior](#) | [U.S. Geological Survey](#)

Title: Groundwater for USA: Water Levels

URL: <https://nwis.waterdata.usgs.gov/nwis/gwlevels?>

Page Contact Information: [USGS Water Data Support Team](#)

Page Last Modified: 2024-10-09 16:22:35 EDT

0.74 0.54 nadww02



Onyx PWU 29 Battery

Devon Energy
Facility ID: fAPP2130622574
Eddy County, NM
USGS Map
NAPP2428330737

Legend

- 1.93 miles
- Onyx PWU 29 Battery
- USGS 323845104075601

USGS 323845104075601

Onyx PWU 29 3H Battery

Google Earth

Image © 2024 Airbus

Released to Imaging: 10/25/2024 10:16:06 AM






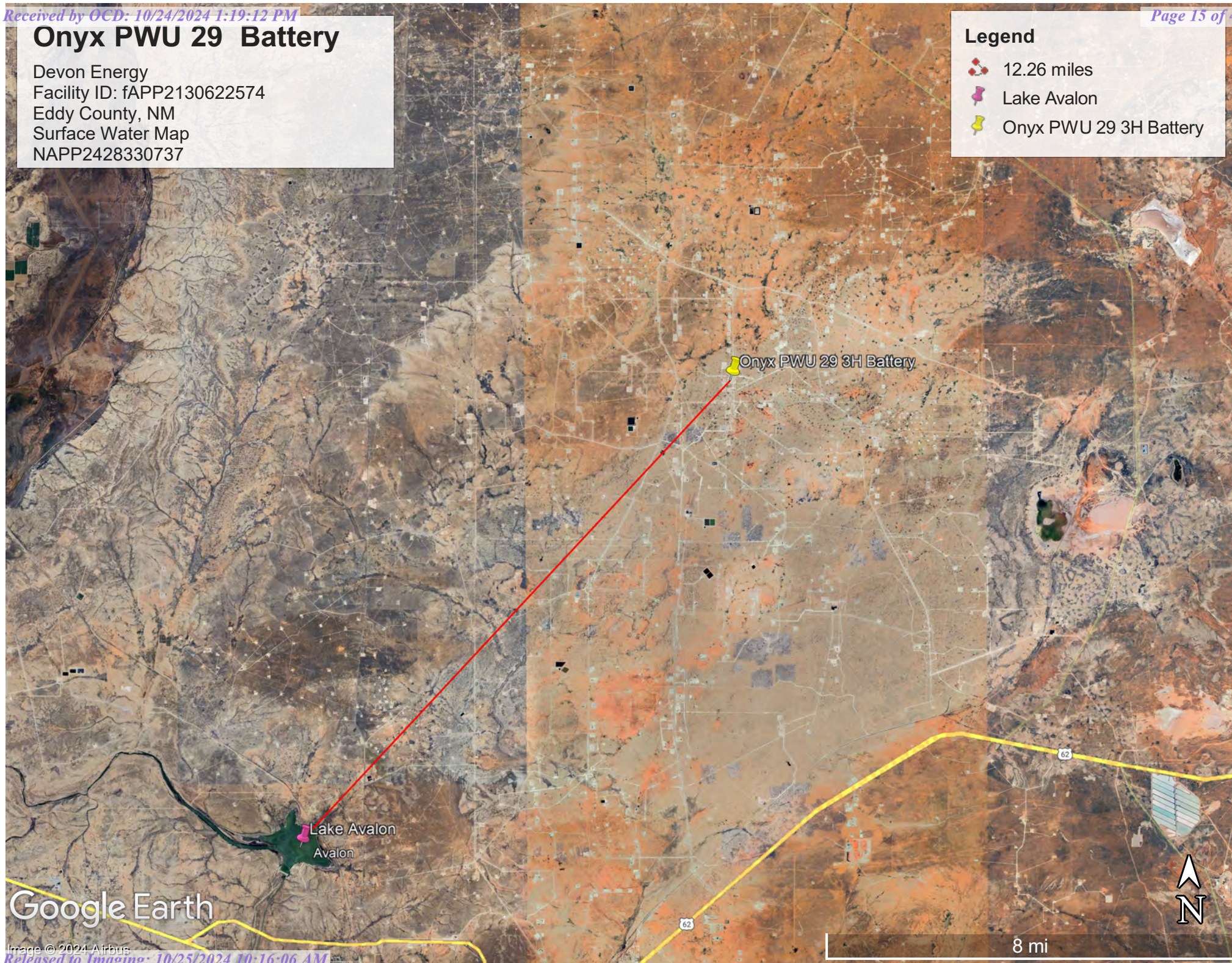
1 mi

Onyx PWU 29 Battery

Devon Energy
Facility ID: fAPP2130622574
Eddy County, NM
Surface Water Map
NAPP2428330737

Legend

-  12.26 miles
-  Lake Avalon
-  Onyx PWU 29 3H Battery



Google Earth

Image © 2024 Airbus

Appendix B

- Soil Survey & Soil Map
- Geological Data
- FEMA Flood Map
- Wetlands Map

Map Unit Description: Reeves-Gypsum land complex, 0 to 3 percent slopes---Eddy Area, New Mexico

Eddy Area, New Mexico

RG—Reeves-Gypsum land complex, 0 to 3 percent slopes

Map Unit Setting

National map unit symbol: 1w5f

Elevation: 1,250 to 5,000 feet

Mean annual precipitation: 10 to 25 inches

Mean annual air temperature: 57 to 70 degrees F

Frost-free period: 190 to 235 days

Farmland classification: Not prime farmland

Map Unit Composition

Reeves and similar soils: 55 percent

Gypsum land: 30 percent

Minor components: 15 percent

Estimates are based on observations, descriptions, and transects of the mapunit.

Description of Reeves

Setting

Landform: Ridges, plains, hills

Landform position (two-dimensional): Shoulder, backslope, footslope, toeslope

Landform position (three-dimensional): Side slope, head slope, nose slope, crest

Down-slope shape: Convex

Across-slope shape: Linear

Parent material: Residuum weathered from gypsum

Typical profile

H1 - 0 to 8 inches: loam

H2 - 8 to 32 inches: clay loam

H3 - 32 to 60 inches: gypsiferous material

Properties and qualities

Slope: 0 to 1 percent

Depth to restrictive feature: More than 80 inches

Drainage class: Well drained

Runoff class: High

Capacity of the most limiting layer to transmit water (Ksat): Very low to moderately low (0.00 to 0.06 in/hr)

Depth to water table: More than 80 inches

Frequency of flooding: None

Frequency of ponding: None

Calcium carbonate, maximum content: 25 percent

Gypsum, maximum content: 80 percent

Maximum salinity: Very slightly saline to moderately saline (2.0 to 8.0 mmhos/cm)

Sodium adsorption ratio, maximum: 4.0

Available water supply, 0 to 60 inches: Low (about 4.3 inches)

Map Unit Description: Reeves-Gypsum land complex, 0 to 3 percent slopes---Eddy Area, New Mexico

Interpretive groups

Land capability classification (irrigated): 3s

Land capability classification (nonirrigated): 7s

Hydrologic Soil Group: B

Ecological site: R070BC007NM - Loamy

Hydric soil rating: No

Description of Gypsum Land**Setting**

Landform: Ridges, plains, hills

Landform position (two-dimensional): Shoulder, backslope, footslope, toeslope

Landform position (three-dimensional): Side slope, head slope, nose slope, crest

Down-slope shape: Convex

Across-slope shape: Linear

Parent material: Residuum weathered from gypsum

Interpretive groups

Land capability classification (irrigated): None specified

Land capability classification (nonirrigated): 8s

Hydric soil rating: No

Minor Components**Largo**

Percent of map unit: 5 percent

Ecological site: R070BC007NM - Loamy

Hydric soil rating: No

Reagan

Percent of map unit: 5 percent

Ecological site: R070BC007NM - Loamy

Hydric soil rating: No

Cottonwood

Percent of map unit: 5 percent

Ecological site: R070BC033NM - Salty Bottomland

Hydric soil rating: No

Data Source Information

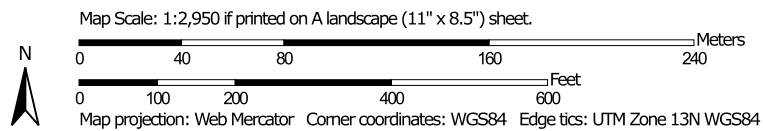
Soil Survey Area: Eddy Area, New Mexico

Survey Area Data: Version 20, Sep 3, 2024

Soil Map—Eddy Area, New Mexico



Soil Map may not be valid at this scale.




Natural Resources
Conservation Service

Web Soil Survey
National Cooperative Soil Survey

10/9/2024
Page 1 of 3

MAP LEGEND

Area of Interest (AOI)

 Area of Interest (AOI)

Soils

 Soil Map Unit Polygons

 Soil Map Unit Lines

 Soil Map Unit Points

Special Point Features



Blowout



Borrow Pit



Clay Spot



Closed Depression



Gravel Pit



Gravelly Spot



Landfill



Lava Flow



Marsh or swamp



Mine or Quarry



Miscellaneous Water



Perennial Water



Rock Outcrop



Saline Spot



Sandy Spot



Severely Eroded Spot



Sinkhole



Slide or Slip



Sodic Spot



Spoil Area



Stony Spot



Very Stony Spot



Wet Spot



Other



Special Line Features

Water Features



Streams and Canals

Transportation



Rails



Interstate Highways



US Routes



Major Roads



Local Roads

Background



Aerial Photography

MAP INFORMATION

The soil surveys that comprise your AOI were mapped at 1:20,000.

Warning: Soil Map may not be valid at this scale.

Enlargement of maps beyond the scale of mapping can cause misunderstanding of the detail of mapping and accuracy of soil line placement. The maps do not show the small areas of contrasting soils that could have been shown at a more detailed scale.

Please rely on the bar scale on each map sheet for map measurements.

Source of Map: Natural Resources Conservation Service
Web Soil Survey URL:
Coordinate System: Web Mercator (EPSG:3857)

Maps from the Web Soil Survey are based on the Web Mercator projection, which preserves direction and shape but distorts distance and area. A projection that preserves area, such as the Albers equal-area conic projection, should be used if more accurate calculations of distance or area are required.

This product is generated from the USDA-NRCS certified data as of the version date(s) listed below.

Soil Survey Area: Eddy Area, New Mexico
Survey Area Data: Version 20, Sep 3, 2024

Soil map units are labeled (as space allows) for map scales 1:50,000 or larger.

Date(s) aerial images were photographed: Nov 12, 2022—Dec 2, 2022

The orthophoto or other base map on which the soil lines were compiled and digitized probably differs from the background imagery displayed on these maps. As a result, some minor shifting of map unit boundaries may be evident.

Map Unit Legend

Map Unit Symbol	Map Unit Name	Acres in AOI	Percent of AOI
RG	Reeves-Gypsum land complex, 0 to 3 percent slopes	32.6	100.0%
Totals for Area of Interest		32.6	100.0%

(<https://www.usgs.gov/>)

Mineral Resources (<https://www.usgs.gov/energy-and-minerals/mineral-resources-program>)
/ Online Spatial Data (/) / Geology (/geology/) / by state (/geology/state/)
/ New Mexico (/geology/state/state.php?state=NM)

Piedmont alluvial deposits

XML (/geology/state/xml/NMQp;0)

JSON (/geology/state/json/NMQp;0)

Shapefile (/geology/state/unit-shape.php?unit=NMQp;0)

Includes deposits of higher gradient tributaries bordering major stream valleys, alluvial veneers of the piedmont slope, and alluvial fans. May locally include uppermost Pliocene deposits.

State	New Mexico (/geology/state/state.php?state=NM)
Name	Piedmont alluvial deposits
Geologic age	Holocene to lower Pleistocene
Lithologic constituents	Major Unconsolidated (Alluvial) Includes deposits of higher gradient tributaries bordering major stream valleys, alluvial veneers of the piedmont slope, and alluvial fans
References	Green, G.N., Jones, G.E., and Anderson, O.J., 1997, The Digital Geologic Map of New Mexico in ARC/INFO Format: U.S. Geological Survey Open-File Report 97-0052, 9 p., scale 1:500,000. https://pubs.er.usgs.gov/publication/ofr9752 (https://pubs.er.usgs.gov/publication/ofr9752)
NGMDB product	NGMDB product page for 59219 (https://ngmdb.usgs.gov/Prodesc/proddesc_59219.htm) NGMDB product page for 22974 (https://ngmdb.usgs.gov/Prodesc/proddesc_22974.htm)

Counties

Bernalillo (/geology/state/fips-unit.php?code=f35001) - Catron (/geology/state/fips-unit.php?code=f35003) - Chaves (/geology/state/fips-unit.php?code=f35005) - Colfax (/geology/state/fips-unit.php?code=f35007) - DeBaca (/geology/state/fips-unit.php?code=f35011) - Dona Ana (/geology/state/fips-unit.php?code=f35013) - Eddy (/geology/state/fips-unit.php?code=f35015) - Grant (/geology/state/fips-unit.php?code=f35017) - Guadalupe (/geology/state/fips-unit.php?code=f35019) - Hidalgo (/geology/state/fips-unit.php?code=f35023) - Lea (/geology/state/fips-unit.php?code=f35025) - Lincoln (/geology/state/fips-unit.php?code=f35027) - Los Alamos (/geology/state/fips-unit.php?code=f35028) - Luna (/geology/state/fips-unit.php?code=f35029) - Mora (/geology/state/fips-unit.php?code=f35033) - Otero (/geology/state/fips-unit.php?code=f35035) - Quay (/geology/state/fips-unit.php?code=f35037) - Rio Arriba (/geology/state/fips-unit.php?code=f35039) - Roosevelt (/geology/state/fips-unit.php?code=f35041) - Sandoval (/geology/state/fips-unit.php?code=f35043) - San Miguel (/geology/state/fips-unit.php?code=f35047) - Santa Fe (/geology/state/fips-unit.php?code=f35049) - Sierra (/geology/state/fips-unit.php?code=f35051) - Socorro (/geology/state/fips-unit.php?code=f35053) - Taos (/geology/state/fips-unit.php?code=f35055) - Tarrant (/geology/state/fips-unit.php?code=f35057) - Valencia (/geology/state/fips-unit.php?code=f35061)

DOI Privacy Policy (<https://www.doi.gov/privacy>) | Legal (https://www.usgs.gov/laws/policies_notices.html) |

Accessibility (<https://www2.usgs.gov/laws/accessibility.html>) | Site Map (<https://www.usgs.gov/sitemap.html>) |

Contact USGS (<https://answers.usgs.gov/>)

U.S. Department of the Interior (<https://www.doi.gov/>) | DOI Inspector General (<https://www.doiig.gov/>) |

White House (<https://www.whitehouse.gov/>) | E-gov (<https://www.whitehouse.gov/omb/management/egov/>) |








No Fear Act (<https://www.doi.gov/pmb/eeo/no-fear-act>) | FOIA (<https://www2.usgs.gov/foia>)

Onyx PWU 29 Battery

Devon Energy
Facility ID: fAPP2130622574
Eddy County, NM
Geological Map
NAPP2428330737

Onyx PWU 29 3H Battery

Legend

-  Alluvium
-  Eolian and piedmont deposits
-  Eolian deposits
-  Older alluvial deposits of upland plains, piedmont areas, calcic soils, eolian cover sediments of High Plains region
-  Onyx PWU 29 3H Battery
-  Piedmont alluvial deposits
-  Rustler Formation

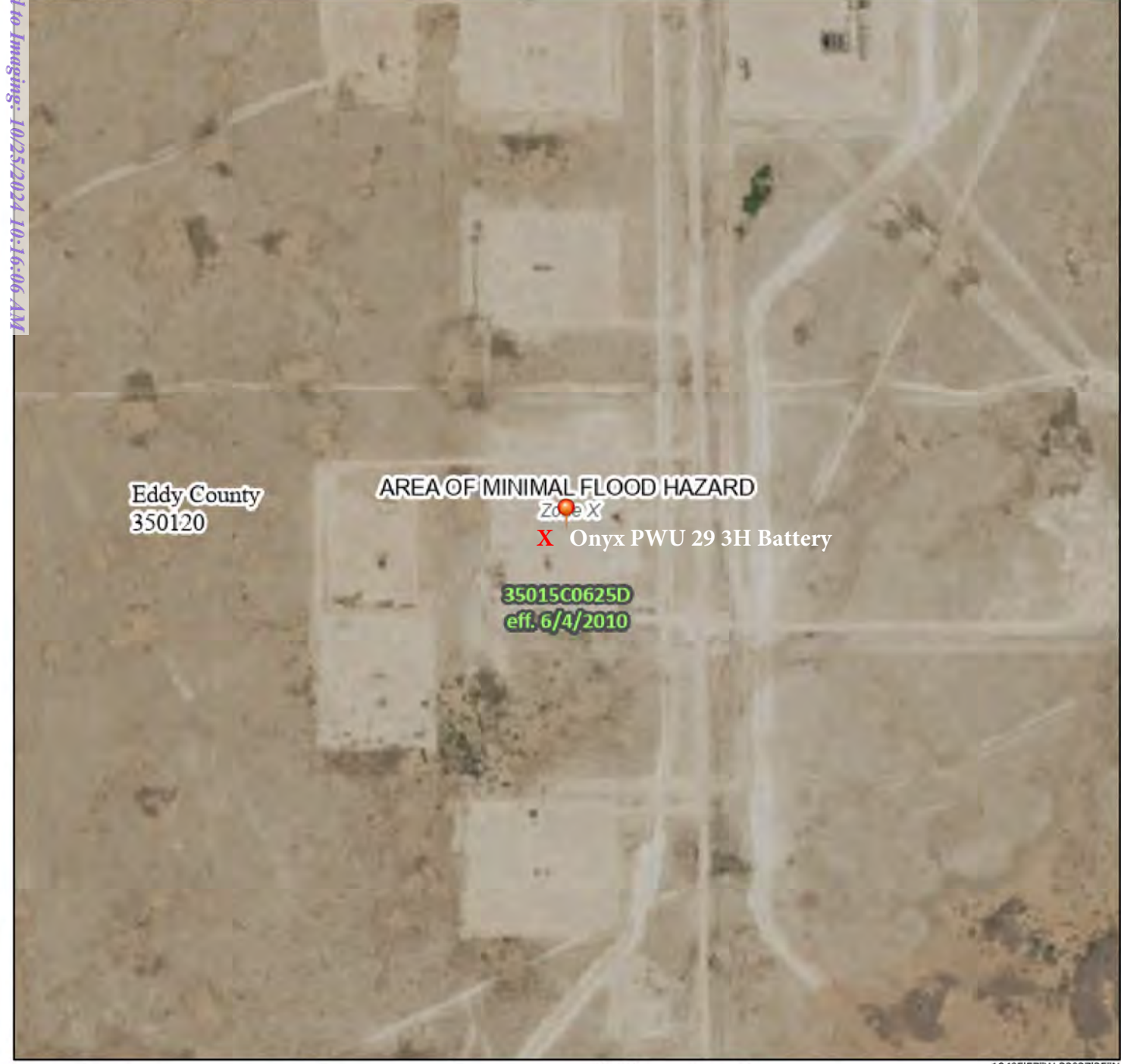
Google Earth



National Flood Hazard Layer FIRMette



104°6'34"W 32°38'6"N



0 250 500 1,000 1,500 2,000 Feet

1:6,000

104°5'57"W 32°37'35"N

Basemap Imagery Source: USGS National Map 2023

Legend

SEE FIS REPORT FOR DETAILED LEGEND AND INDEX MAP FOR FIRM PANEL LAYOUT

SPECIAL FLOOD HAZARD AREAS		Without Base Flood Elevation (BFE) Zone A, V, A99
		With BFE or Depth Zone AE, AO, AH, VE, AR
		Regulatory Floodway
OTHER AREAS OF FLOOD HAZARD		0.2% Annual Chance Flood Hazard, Areas of 1% annual chance flood with average depth less than one foot or with drainage areas of less than one square mile
		Future Conditions 1% Annual Chance Flood Hazard Zone X
		Area with Reduced Flood Risk due to Levee. See Notes. Zone X
		Area with Flood Risk due to Levee Zone X
OTHER AREAS		NO SCREEN Area of Minimal Flood Hazard Zone X
		Effective LOMRs
GENERAL STRUCTURES		Area of Undetermined Flood Hazard Zone D
		Channel, Culvert, or Storm Sewer
		Levee, Dike, or Floodwall
OTHER FEATURES		20.2 Cross Sections with 1% Annual Chance
		17.5 Water Surface Elevation
		Coastal Transect
		Base Flood Elevation Line (BFE)
		Limit of Study
		Jurisdiction Boundary
		Coastal Transect Baseline
		Profile Baseline
		Hydrographic Feature
		Digital Data Available
MAP PANELS		No Digital Data Available
		Unmapped
		The pin displayed on the map is an approximate point selected by the user and does not represent an authoritative property location.

This map complies with FEMA's standards for the use of digital flood maps if it is not void as described below. The basemap shown complies with FEMA's basemap accuracy standards

The flood hazard information is derived directly from the authoritative NFHL web services provided by FEMA. This map was exported on 10/9/2024 at 4:31 PM and does not reflect changes or amendments subsequent to this date and time. The NFHL and effective information may change or become superseded by new data over time.

This map image is void if the one or more of the following map elements do not appear: basemap imagery, flood zone labels, legend, scale bar, map creation date, community identifiers, FIRM panel number, and FIRM effective date. Map images for unmapped and unmodernized areas cannot be used for regulatory purposes.

Released to Imaging: 10/23/2024 10:16:06 AM

Received by OCD: 10/24/2024 1:19:12 PM



Page 25 of 43

Wetlands Map



October 9, 2024

Wetlands

- | | | |
|--|---|--|
|  Estuarine and Marine Deepwater |  Freshwater Emergent Wetland |  Lake |
|  Estuarine and Marine Wetland |  Freshwater Forested/Shrub Wetland |  Other |
| |  Freshwater Pond |  Riverine |

This map is for general reference only. The US Fish and Wildlife Service is not responsible for the accuracy or currentness of the base data shown on this map. All wetlands related data should be used in accordance with the layer metadata found on the Wetlands Mapper web site.



Appendix C

- 48-Hour Notification
- Liner Inspection Form

District I

1625 N. French Dr., Hobbs, NM 88240
Phone:(575) 393-6161 Fax:(575) 393-0720

District II

811 S. First St., Artesia, NM 88210
Phone:(575) 748-1283 Fax:(575) 748-9720

District III

1000 Rio Brazos Rd., Aztec, NM 87410
Phone:(505) 334-6178 Fax:(505) 334-6170

District IV

1220 S. St Francis Dr., Santa Fe, NM 87505
Phone:(505) 476-3470 Fax:(505) 476-3462

State of New Mexico
Energy, Minerals and Natural Resources
Oil Conservation Division
1220 S. St Francis Dr.
Santa Fe, NM 87505

QUESTIONS

Action 393929

QUESTIONS

Operator: DEVON ENERGY PRODUCTION COMPANY, LP 333 West Sheridan Ave. Oklahoma City, OK 73102	OGRID: 6137
	Action Number: 393929
	Action Type: [NOTIFY] Notification Of Liner Inspection (C-141L)

QUESTIONS

Prerequisites	
Incident ID (n#)	nAPP2428330737
Incident Name	NAPP2428330737 ONYX PWU 29 BATTERY @ 0
Incident Type	Produced Water Release
Incident Status	Initial C-141 Approved
Incident Facility	[fAPP2130622574] ONYX PWU 29 BATTERY

Location of Release Source

Site Name	ONYX PWU 29 BATTERY
Date Release Discovered	10/08/2024
Surface Owner	State

Liner Inspection Event Information*Please answer all the questions in this group.*

What is the liner inspection surface area in square feet	3,805
Have all the impacted materials been removed from the liner	Yes
Liner inspection date pursuant to Subparagraph (a) of Paragraph (5) of Subsection A of 19.15.29.11 NMAC	10/23/2024
Time liner inspection will commence	09:30 AM

Warning: Notification can not be less than two business days prior to conducting liner inspection.

Please provide any information necessary for observers to liner inspection	visually inspected for any pinholes or punctures, will be conducted by Andrew Franco 806-200-0054
Please provide any information necessary for navigation to liner inspection site	L-29-19S-29E, 32.63070272, -104.104353 NAD83

District I
1625 N. French Dr., Hobbs, NM 88240
Phone:(575) 393-6161 Fax:(575) 393-0720
District II
811 S. First St., Artesia, NM 88210
Phone:(575) 748-1283 Fax:(575) 748-9720
District III
1000 Rio Brazos Rd., Aztec, NM 87410
Phone:(505) 334-6178 Fax:(505) 334-6170
District IV
1220 S. St Francis Dr., Santa Fe, NM 87505
Phone:(505) 476-3470 Fax:(505) 476-3462

State of New Mexico
Energy, Minerals and Natural Resources
Oil Conservation Division
1220 S. St Francis Dr.
Santa Fe, NM 87505

CONDITIONS

Action 393929

CONDITIONS

Operator: DEVON ENERGY PRODUCTION COMPANY, LP 333 West Sheridan Ave. Oklahoma City, OK 73102	OGRID: 6137
	Action Number: 393929
	Action Type: [NOTIFY] Notification Of Liner Inspection (C-141L)

CONDITIONS

Created By	Condition	Condition Date
wdale	Failure to notify the OCD of liner inspections including any changes in date/time per the requirements of 19.15.29.11.A(5)(a)(ii) NMAC, may result in the inspection not being accepted.	10/19/2024



Pima Environmental Services, LLC

Liner Inspection FormCompany Name: Devon EnergySite: Onyx PWU 29 BatteryLat/Long: 32.63070272, -104.104353

NMOCD Incident ID

& Incident Date: NAPP2428330737 10/8/2024

2-Day Notification

Sent: via Email by Dale Woodall on OCD portal 10/19/2024
application ID: 393929.Inspection Date: 10/23/2024

Liner Type: Earthen w/liner Earthen no liner Polystar

 Steel w/poly liner Steel w/spray epoxy No Liner

Other: _____

Visualization	Yes	No	Comments
Is there a tear in the liner?		X	
Are there holes in the liner?		X	
Is the liner retaining any fluids?	X		Fluid from power washing the Liner
Does the liner have integrity to contain a leak?	X		

Comments: _____

Inspector Name: Andrew Franco Inspector Signature: Andrew Franco



Appendix D

○ Photographic Documentation



PHOTOGRAPHIC DOCUMENTATION

SITE NAME: ONYX PWU 29 Battery

Intial Liner Inspection :



Site Information sign.



Photo of liner taken prior to power washing.
Facing South



Photo of liner taken prior to power washing.
Facing South



Photo of liner taken prior to power washing.
Facing West



Photo of liner taken prior to power washing.
Facing North

PHOTOGRAPHIC DOCUMENTATION

SITE NAME: ONYX PWU 29 Battery

Liner Inspection :



Photo taken pursuant to power washing.
Facing South



Photo taken pursuant to power washing.
Facing South, The Liner displays a different color on the
Northwest corner.



Photo taken pursuant to power washing.
Facing West

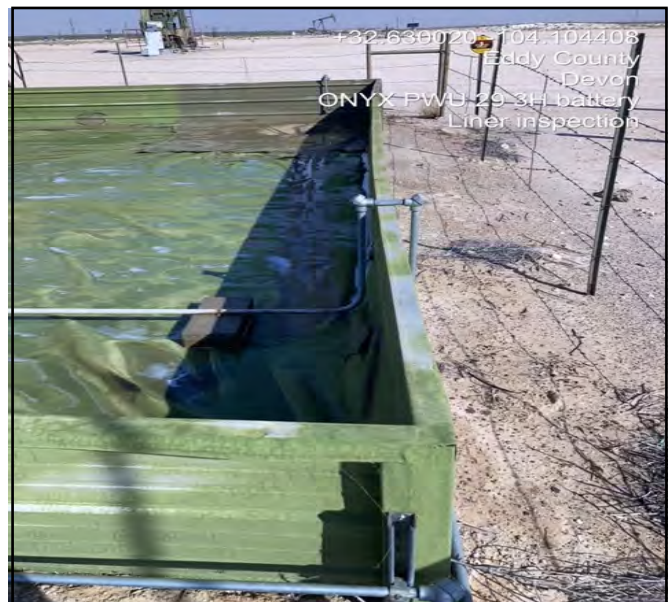


Photo taken pursuant to power washing.
Facing North.



Photo taken pursuant to power washing.
Facing West.



Photo taken pursuant to power washing.
Facing East.



Photo taken pursuant to power washing.
Facing North.

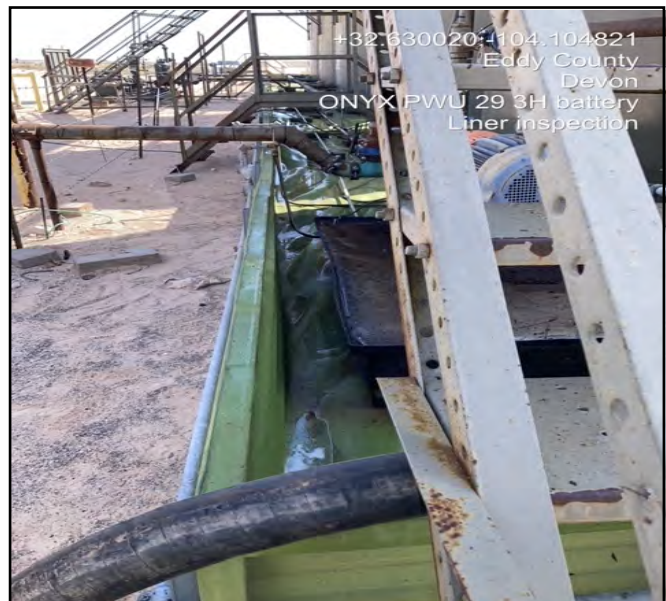
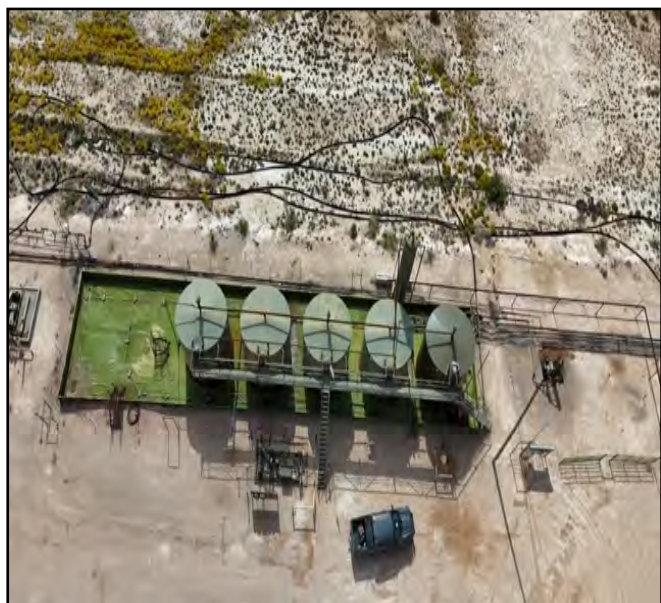


Photo taken pursuant to power washing.
Facing East.

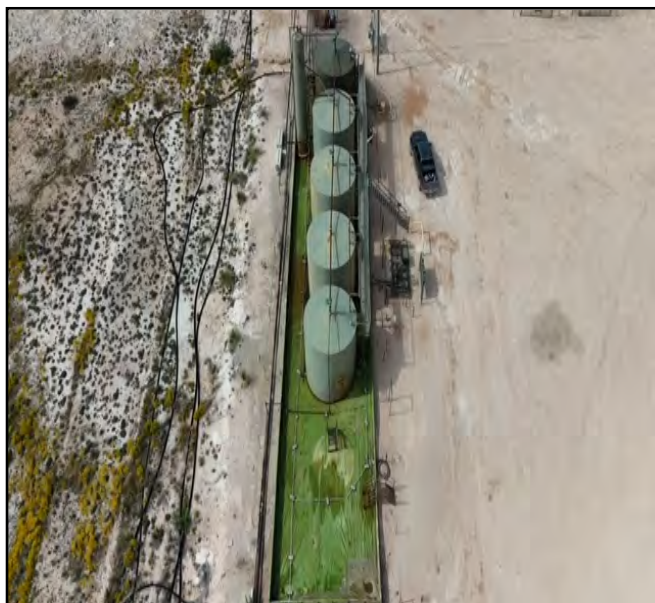
PHOTOGRAPHIC DOCUMENTATION SITE

NAME: ONYX PWU 29 Battery

Aerial Photos :



Aerial photo of liner.



Aerial photo of liner.



Aerial photo of liner.



Aerial photo of liner.



Aerial photo of liner.

District I
1625 N. French Dr., Hobbs, NM 88240
Phone:(575) 393-6161 Fax:(575) 393-0720
District II
811 S. First St., Artesia, NM 88210
Phone:(575) 748-1283 Fax:(575) 748-9720
District III
1000 Rio Brazos Rd., Aztec, NM 87410
Phone:(505) 334-6178 Fax:(505) 334-6170
District IV
1220 S. St Francis Dr., Santa Fe, NM 87505
Phone:(505) 476-3470 Fax:(505) 476-3462

State of New Mexico
Energy, Minerals and Natural Resources
Oil Conservation Division
1220 S. St Francis Dr.
Santa Fe, NM 87505

QUESTIONS

Action 395623

QUESTIONS

Operator: DEVON ENERGY PRODUCTION COMPANY, LP 333 West Sheridan Ave. Oklahoma City, OK 73102	OGRID: 6137
	Action Number: 395623
	Action Type: [C-141] Remediation Closure Request C-141 (C-141-v-Closure)

QUESTIONS

Prerequisites	
Incident ID (n#)	nAPP2428330737
Incident Name	NAPP2428330737 ONYX PWU 29 BATTERY @ 0
Incident Type	Produced Water Release
Incident Status	Remediation Closure Report Received
Incident Facility	[fAPP2130622574] ONYX PWU 29 BATTERY

Location of Release Source	
Please answer all the questions in this group.	
Site Name	ONYX PWU 29 BATTERY
Date Release Discovered	10/08/2024
Surface Owner	State

Incident Details	
Please answer all the questions in this group.	
Incident Type	Produced Water Release
Did this release result in a fire or is the result of a fire	No
Did this release result in any injuries	No
Has this release reached or does it have a reasonable probability of reaching a watercourse	No
Has this release endangered or does it have a reasonable probability of endangering public health	No
Has this release substantially damaged or will it substantially damage property or the environment	No
Is this release of a volume that is or may with reasonable probability be detrimental to fresh water	No

Nature and Volume of Release	
Material(s) released, please answer all that apply below. Any calculations or specific justifications for the volumes provided should be attached to the follow-up C-141 submission.	
Crude Oil Released (bbls) Details	Not answered.
Produced Water Released (bbls) Details	Cause: Equipment Failure Production Tank Produced Water Released: 6 BBL Recovered: 6 BBL Lost: 0 BBL.
Is the concentration of chloride in the produced water >10,000 mg/l	Yes
Condensate Released (bbls) Details	Not answered.
Natural Gas Vented (Mcf) Details	Not answered.
Natural Gas Flared (Mcf) Details	Not answered.
Other Released Details	Not answered.
Are there additional details for the questions above (i.e. any answer containing Other, Specify, Unknown, and/or Fire, or any negative lost amounts)	TANK LEAKING FROM THE BOTTOM. 6.3 BBLs PRODUCED WATER RELEASED.AND 6.3 BBLs RECOVERED. SPILL WAS IN A LINED CONTAINMENT.

District I

1625 N. French Dr., Hobbs, NM 88240
Phone:(575) 393-6161 Fax:(575) 393-0720

District II

811 S. First St., Artesia, NM 88210
Phone:(575) 748-1283 Fax:(575) 748-9720

District III

1000 Rio Brazos Rd., Aztec, NM 87410
Phone:(505) 334-6178 Fax:(505) 334-6170

District IV

1220 S. St Francis Dr., Santa Fe, NM 87505
Phone:(505) 476-3470 Fax:(505) 476-3462

State of New Mexico
Energy, Minerals and Natural Resources
Oil Conservation Division
1220 S. St Francis Dr.
Santa Fe, NM 87505

QUESTIONS, Page 2

Action 395623

QUESTIONS (continued)

Operator: DEVON ENERGY PRODUCTION COMPANY, LP 333 West Sheridan Ave. Oklahoma City, OK 73102	OGRID:	6137
	Action Number:	395623
	Action Type:	[C-141] Remediation Closure Request C-141 (C-141-v-Closure)

QUESTIONS

Nature and Volume of Release (continued)	
Is this a gas only submission (i.e. only significant Mcf values reported)	No, according to supplied volumes this does not appear to be a "gas only" report.
Was this a major release as defined by Subsection A of 19.15.29.7 NMAC	No
Reasons why this would be considered a submission for a notification of a major release	<i>Unavailable.</i>
<i>With the implementation of the 19.15.27 NMAC (05/25/2021), venting and/or flaring of natural gas (i.e. gas only) are to be submitted on the C-129 form.</i>	

Initial Response

The responsible party must undertake the following actions immediately unless they could create a safety hazard that would result in injury.

The source of the release has been stopped	True
The impacted area has been secured to protect human health and the environment	True
Released materials have been contained via the use of berms or dikes, absorbent pads, or other containment devices	True
All free liquids and recoverable materials have been removed and managed appropriately	True
If all the actions described above have not been undertaken, explain why	<i>Not answered.</i>

Per Paragraph (4) of Subsection B of 19.15.29.8 NMAC the responsible party may commence remediation immediately after discovery of a release. If remediation has begun, please prepare and attach a narrative of actions to date in the follow-up C-141 submission. If remedial efforts have been successfully completed or if the release occurred within a lined containment area (see Subparagraph (a) of Paragraph (5) of Subsection A of 19.15.29.11 NMAC), please prepare and attach all information needed for closure evaluation in the follow-up C-141 submission.

I hereby certify that the information given above is true and complete to the best of my knowledge and understand that pursuant to OCD rules and regulations all operators are required to report and/or file certain release notifications and perform corrective actions for releases which may endanger public health or the environment. The acceptance of a C-141 report by the OCD does not relieve the operator of liability should their operations have failed to adequately investigate and remediate contamination that pose a threat to groundwater, surface water, human health or the environment. In addition, OCD acceptance of a C-141 report does not relieve the operator of responsibility for compliance with any other federal, state, or local laws and/or regulations.

I hereby agree and sign off to the above statement	Name: James Raley Title: EHS Professional Email: jim.raley@dmn.com Date: 10/24/2024
--	--

District I

1625 N. French Dr., Hobbs, NM 88240
Phone:(575) 393-6161 Fax:(575) 393-0720

District II

811 S. First St., Artesia, NM 88210
Phone:(575) 748-1283 Fax:(575) 748-9720

District III

1000 Rio Brazos Rd., Aztec, NM 87410
Phone:(505) 334-6178 Fax:(505) 334-6170

District IV

1220 S. St Francis Dr., Santa Fe, NM 87505
Phone:(505) 476-3470 Fax:(505) 476-3462

State of New Mexico
Energy, Minerals and Natural Resources
Oil Conservation Division
1220 S. St Francis Dr.
Santa Fe, NM 87505

QUESTIONS, Page 3

Action 395623

QUESTIONS (continued)

Operator: DEVON ENERGY PRODUCTION COMPANY, LP 333 West Sheridan Ave. Oklahoma City, OK 73102	OGRID: 6137
	Action Number: 395623
	Action Type: [C-141] Remediation Closure Request C-141 (C-141-v-Closure)

QUESTIONS**Site Characterization**

Please answer all the questions in this group (only required when seeking remediation plan approval and beyond). This information must be provided to the appropriate district office no later than 90 days after the release discovery date.

What is the shallowest depth to groundwater beneath the area affected by the release in feet below ground surface (ft bgs)	Between 100 and 500 (ft.)
What method was used to determine the depth to ground water	NM OSE iWaters Database Search
Did this release impact groundwater or surface water	No
What is the minimum distance, between the closest lateral extents of the release and the following surface areas:	
A continuously flowing watercourse or any other significant watercourse	Greater than 5 (mi.)
Any lakebed, sinkhole, or playa lake (measured from the ordinary high-water mark)	Greater than 5 (mi.)
An occupied permanent residence, school, hospital, institution, or church	Greater than 5 (mi.)
A spring or a private domestic fresh water well used by less than five households for domestic or stock watering purposes	Greater than 5 (mi.)
Any other fresh water well or spring	Greater than 5 (mi.)
Incorporated municipal boundaries or a defined municipal fresh water well field	Greater than 5 (mi.)
A wetland	Between 1 and 5 (mi.)
A subsurface mine	Greater than 5 (mi.)
An (non-karst) unstable area	Greater than 5 (mi.)
Categorize the risk of this well / site being in a karst geology	High
A 100-year floodplain	Greater than 5 (mi.)
Did the release impact areas not on an exploration, development, production, or storage site	No

Remediation Plan

Please answer all the questions that apply or are indicated. This information must be provided to the appropriate district office no later than 90 days after the release discovery date.

Requesting a remediation plan approval with this submission	Yes
Attach a comprehensive report demonstrating the lateral and vertical extents of soil contamination associated with the release have been determined, pursuant to 19.15.29.11 NMAC and 19.15.29.13 NMAC.	
Have the lateral and vertical extents of contamination been fully delineated	Yes
Was this release entirely contained within a lined containment area	Yes
Per Subsection B of 19.15.29.11 NMAC unless the site characterization report includes completed efforts at remediation, the report must include a proposed remediation plan in accordance with 19.15.29.12 NMAC, which includes the anticipated timelines for beginning and completing the remediation.	
On what estimated date will the remediation commence	10/17/2024
On what date will (or did) the final sampling or liner inspection occur	10/23/2024
On what date will (or was) the remediation complete(d)	10/23/2024
What is the estimated surface area (in square feet) that will be remediated	0
What is the estimated volume (in cubic yards) that will be remediated	0
These estimated dates and measurements are recognized to be the best guess or calculation at the time of submission and may (be) change(d) over time as more remediation efforts are completed.	
The OCD recognizes that proposed remediation measures may have to be minimally adjusted in accordance with the physical realities encountered during remediation. If the responsible party has any need to significantly deviate from the remediation plan proposed, then it should consult with the division to determine if another remediation plan submission is required.	

District I
1625 N. French Dr., Hobbs, NM 88240
Phone:(575) 393-6161 Fax:(575) 393-0720

District II
811 S. First St., Artesia, NM 88210
Phone:(575) 748-1283 Fax:(575) 748-9720

District III
1000 Rio Brazos Rd., Aztec, NM 87410
Phone:(505) 334-6178 Fax:(505) 334-6170

District IV
1220 S. St Francis Dr., Santa Fe, NM 87505
Phone:(505) 476-3470 Fax:(505) 476-3462

State of New Mexico
Energy, Minerals and Natural Resources
Oil Conservation Division
1220 S. St Francis Dr.
Santa Fe, NM 87505

QUESTIONS, Page 4

Action 395623

QUESTIONS (continued)

Operator: DEVON ENERGY PRODUCTION COMPANY, LP 333 West Sheridan Ave. Oklahoma City, OK 73102	OGRID:	6137
	Action Number:	395623
	Action Type:	[C-141] Remediation Closure Request C-141 (C-141-v-Closure)

QUESTIONS

Remediation Plan (continued)	
<i>Please answer all the questions that apply or are indicated. This information must be provided to the appropriate district office no later than 90 days after the release discovery date.</i>	
This remediation will (or is expected to) utilize the following processes to remediate / reduce contaminants:	
<i>(Select all answers below that apply.)</i>	
Is (or was) there affected material present needing to be removed	Yes
Is (or was) there a power wash of the lined containment area (to be) performed	Yes
OTHER (Non-listed remedial process)	Not answered.
<i>Per Subsection B of 19.15.29.11 NMAC unless the site characterization report includes completed efforts at remediation, the report must include a proposed remediation plan in accordance with 19.15.29.12 NMAC, which includes the anticipated timelines for beginning and completing the remediation.</i>	
I hereby certify that the information given above is true and complete to the best of my knowledge and understand that pursuant to OCD rules and regulations all operators are required to report and/or file certain release notifications and perform corrective actions for releases which may endanger public health or the environment. The acceptance of a C-141 report by the OCD does not relieve the operator of liability should their operations have failed to adequately investigate and remediate contamination that pose a threat to groundwater, surface water, human health or the environment. In addition, OCD acceptance of a C-141 report does not relieve the operator of responsibility for compliance with any other federal, state, or local laws and/or regulations.	
I hereby agree and sign off to the above statement	Name: James Raley Title: EHS Professional Email: jim.raley@dvsn.com Date: 10/24/2024
<i>The OCD recognizes that proposed remediation measures may have to be minimally adjusted in accordance with the physical realities encountered during remediation. If the responsible party has any need to significantly deviate from the remediation plan proposed, then it should consult with the division to determine if another remediation plan submission is required.</i>	

District I

1625 N. French Dr., Hobbs, NM 88240
Phone:(575) 393-6161 Fax:(575) 393-0720

District II

811 S. First St., Artesia, NM 88210
Phone:(575) 748-1283 Fax:(575) 748-9720

District III

1000 Rio Brazos Rd., Aztec, NM 87410
Phone:(505) 334-6178 Fax:(505) 334-6170

District IV

1220 S. St Francis Dr., Santa Fe, NM 87505
Phone:(505) 476-3470 Fax:(505) 476-3462

State of New Mexico
Energy, Minerals and Natural Resources
Oil Conservation Division
1220 S. St Francis Dr.
Santa Fe, NM 87505

QUESTIONS, Page 6

Action 395623

QUESTIONS (continued)

Operator: DEVON ENERGY PRODUCTION COMPANY, LP 333 West Sheridan Ave. Oklahoma City, OK 73102	OGRID:	6137
	Action Number:	395623
	Action Type:	[C-141] Remediation Closure Request C-141 (C-141-v-Closure)

QUESTIONS

Liner Inspection Information	
Last liner inspection notification (C-141L) recorded	393929
Liner inspection date pursuant to Subparagraph (a) of Paragraph (5) of Subsection A of 19.15.29.11 NMAC	10/23/2024
Was all the impacted materials removed from the liner	Yes
What was the liner inspection surface area in square feet	3805

Remediation Closure Request

Only answer the questions in this group if seeking remediation closure for this release because all remediation steps have been completed.

Requesting a remediation closure approval with this submission	Yes
Have the lateral and vertical extents of contamination been fully delineated	Yes
Was this release entirely contained within a lined containment area	Yes
What was the total surface area (in square feet) remediated	0
What was the total volume (cubic yards) remediated	0
Summarize any additional remediation activities not included by answers (above)	inspected for any pinholes or punctures or any evidence that the spilled fluids left containment

The responsible party must attach information demonstrating they have complied with all applicable closure requirements and any conditions or directives of the OCD. This demonstration should be in the form of a comprehensive report (in .pdf format) including a scaled site map, sampling diagrams, relevant field notes, photographs of any excavation prior to backfilling, laboratory data including chain of custody documents of final sampling, and a narrative of the remedial activities. Refer to 19.15.29.12 NMAC.

I hereby certify that the information given above is true and complete to the best of my knowledge and understand that pursuant to OCD rules and regulations all operators are required to report and/or file certain release notifications and perform corrective actions for releases which may endanger public health or the environment. The acceptance of a C-141 report by the OCD does not relieve the operator of liability should their operations have failed to adequately investigate and remediate contamination that pose a threat to groundwater, surface water, human health or the environment. In addition, OCD acceptance of a C-141 report does not relieve the operator of responsibility for compliance with any other federal, state, or local laws and/or regulations. The responsible party acknowledges they must substantially restore, reclaim, and re-vegetate the impacted surface area to the conditions that existed prior to the release or their final land use in accordance with 19.15.29.13 NMAC including notification to the OCD when reclamation and re-vegetation are complete.

I hereby agree and sign off to the above statement	Name: James Raley Title: EHS Professional Email: jim.raley@dvn.com Date: 10/24/2024
--	--

District I
1625 N. French Dr., Hobbs, NM 88240
Phone:(575) 393-6161 Fax:(575) 393-0720
District II
811 S. First St., Artesia, NM 88210
Phone:(575) 748-1283 Fax:(575) 748-9720
District III
1000 Rio Brazos Rd., Aztec, NM 87410
Phone:(505) 334-6178 Fax:(505) 334-6170
District IV
1220 S. St Francis Dr., Santa Fe, NM 87505
Phone:(505) 476-3470 Fax:(505) 476-3462

State of New Mexico
Energy, Minerals and Natural Resources
Oil Conservation Division
1220 S. St Francis Dr.
Santa Fe, NM 87505

CONDITIONS

Action 395623

CONDITIONS

Operator: DEVON ENERGY PRODUCTION COMPANY, LP 333 West Sheridan Ave. Oklahoma City, OK 73102	OGRID: 6137
	Action Number: 395623
	Action Type: [C-141] Remediation Closure Request C-141 (C-141-v-Closure)

CONDITIONS

Created By	Condition	Condition Date
scwells	None	10/25/2024