



PREPARED BY:  
PIMA ENVIRONMENTAL SERVICES, LLC

PREPARED FOR:  
Spur Energy

HT Federal #1-4-5 Tank Battery

Incident ID nAPP2423430255

## Liner Inspection and Closure Report

September 25, 2024



**Pima Environmental Services**  
**5614 N. Lovington Highway**  
**Hobbs, NM 88240**  
**575-964-7740**

September 25, 2024

NMOCD District 2  
811 S. First St  
Artesia, NM, 88210

Bureau of Land Management  
620 East Green Street  
Carlsbad, NM 88220

**RE: Liner Inspection and Closure Report**  
**HT Federal # 1-4-5 Tank Battery**  
**API No. N/A**  
**GPS: Latitude 32.83528 Longitude -103.81156**  
**UL- E, Section 18, Township 17S, Range 32E**  
**NMOCD Reference No. NAPP2423430255**

Spur Energy Partners (Spur) has contracted Pima Environmental Services, LLC (Pima) to perform a liner inspection and prepare this closure report for the release of produced water that happened on the HT Federal #1-4-5 Tank Battery (HT). An initial C-141 was submitted on August 21, 2024, and can be found in Appendix B. This incident was assigned Incident ID NAPP2423430255, by the New Mexico Oil Conservation Division (NMOCD).

#### Site Information and Site Characterization

HT is located approximately 3 miles southwest of Maljamar, NM. This spill site is in Unit E, Section 18, Township 17S, Range 32E, Latitude 32.83528 Longitude -103.81156, Lea County, NM. A Location Map can be found in Figure 1.

Based on the well water data from the New Mexico Office of the State Engineer, the depth to the nearest groundwater in this vicinity measures 104 feet below grade surface (BGS), positioned roughly 0.86 miles away from the HT, drilled on October 20, 2022. Conversely, as per the United States Geological Survey well water data, the nearest groundwater depth in this region is recorded at 139.03 feet BGS, situated approximately 3.69 miles away from the HT, with the last gauge conducted on January 12, 1996. For detailed references to water surveys and the precise locations of water wells, please refer to Appendix A, inclusive of the relevant maps. Notably, the HT is situated within an area with a low potential for karst, as illustrated in Figure 3. Additionally, a comprehensive Topographic Map is available for reference in Figure 2.

#### Release Information

**NAPP2423430255:** On August 20, 2024, a 4-inch steel line connected to a water tank developed a hole due to internal and external corrosion, resulting in the release of approximately 65 barrels of produced water into the lined containment area. Immediate actions were taken to stop the release, and a vacuum truck was deployed to the site. The truck successfully recovered all 65 barrels of produced water. The fluid remained fully contained within the lined area, which measured approximately 3,500 square feet.

A Site Map can be found in Figure 4.

#### Site Assessment and Liner Inspection

On September 16, 2024, Spur personnel submitted a notification for a liner inspection, adhering to the necessary 48-hour notice period.

The details of the 48-hour notification can be referenced in Appendix C.

On September 19, 2024, Pima Environmental conducted a thorough inspection of the lined containment area. The evaluation process involved cleaning the liner using a power washer and a vacuum truck to ensure the complete removal of any residual fluids. The inspection confirmed system remained intact and successfully retained all fluids. As a result, the liner was deemed functional, preventing any further environmental impact. A detailed report, including photographic evidence, is provided in Appendix B and C.

#### **Closure Request**

After careful review, Pima requests that this incident NAPP2423430255 be closed. Spur has complied with the applicable closure requirements.

For questions or additional information, please feel free to contact:  
Spur Energy – Katherine Purvis at 575-441-8619 or [katherine.purvis@spurenergy.com](mailto:katherine.purvis@spurenergy.com)  
Pima Environmental Services – Sebastian Orozco at 619-721-4813 or [Sebastian@pimaoil.com](mailto:Sebastian@pimaoil.com).

#### **Attachments**

Figures:

- 1- Location Map
- 2- Topographic Map
- 3- Karst Map
- 4- Site Map

Appendices:

- Appendix A- Referenced Water Surveys
- Appendix B- 48 Hour Notification and Liner Inspection Form
- Appendix C- Photographic Documentation

## Figures:

Figure 1- Location Map

Figure 2- Topographic Map

Figure 3- Karst Map



Figure 4- Site Map

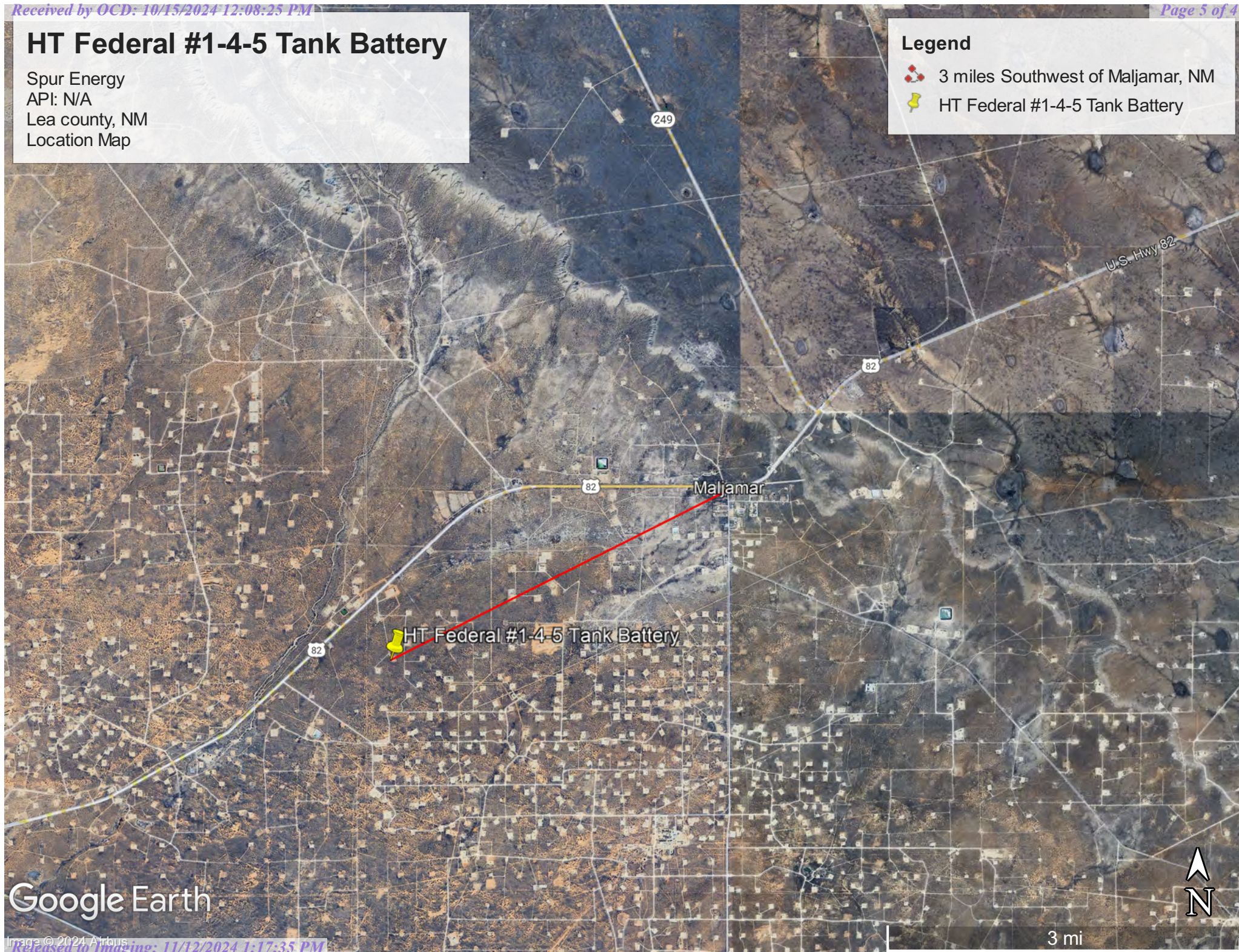


# HT Federal #1-4-5 Tank Battery

Spur Energy  
API: N/A  
Lea county, NM  
Location Map

## Legend

-  3 miles Southwest of Maljamar, NM
-  HT Federal #1-4-5 Tank Battery




Google Earth

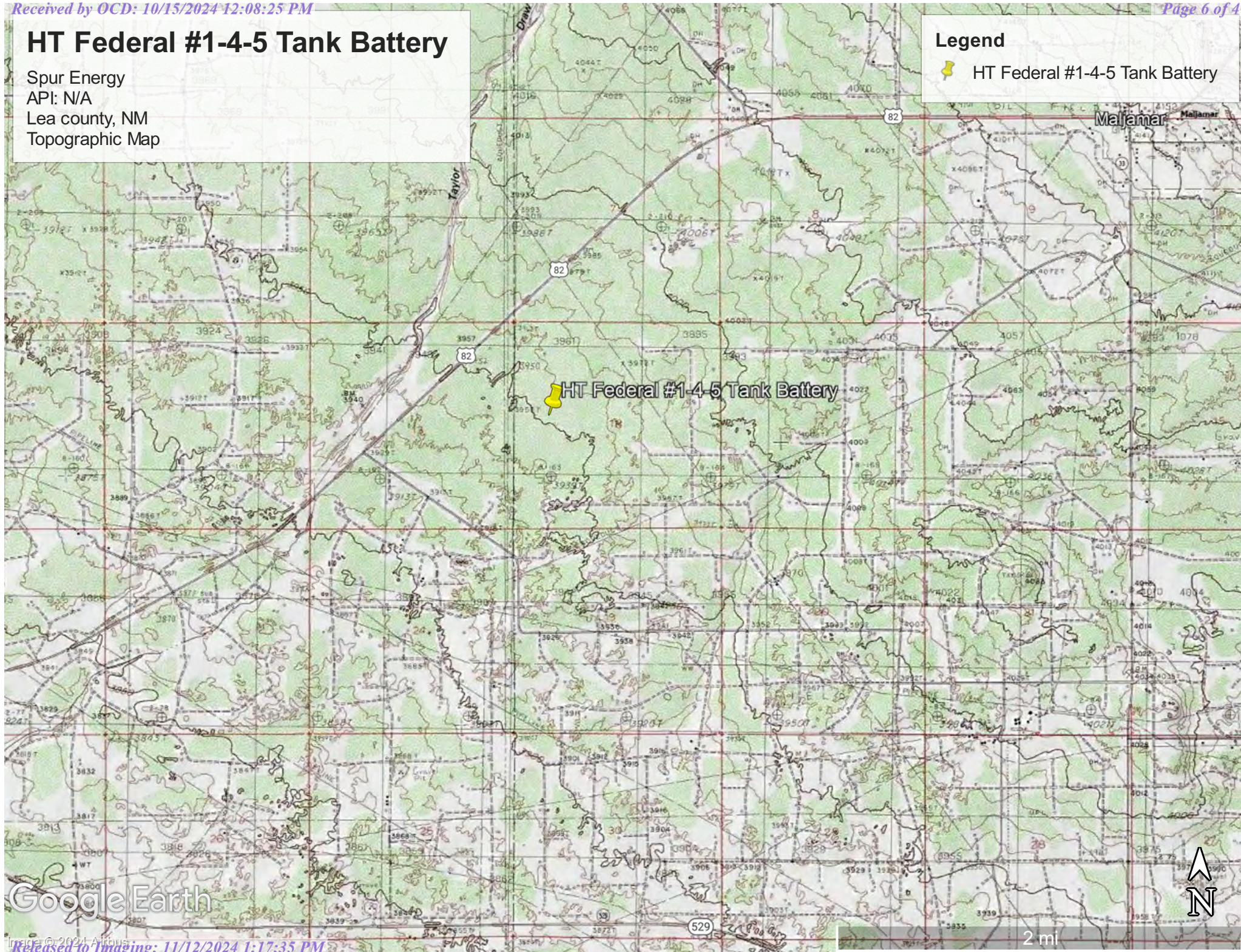


# HT Federal #1-4-5 Tank Battery

Spur Energy  
API: N/A  
Lea county, NM  
Topographic Map

## Legend

 HT Federal #1-4-5 Tank Battery



Google Earth

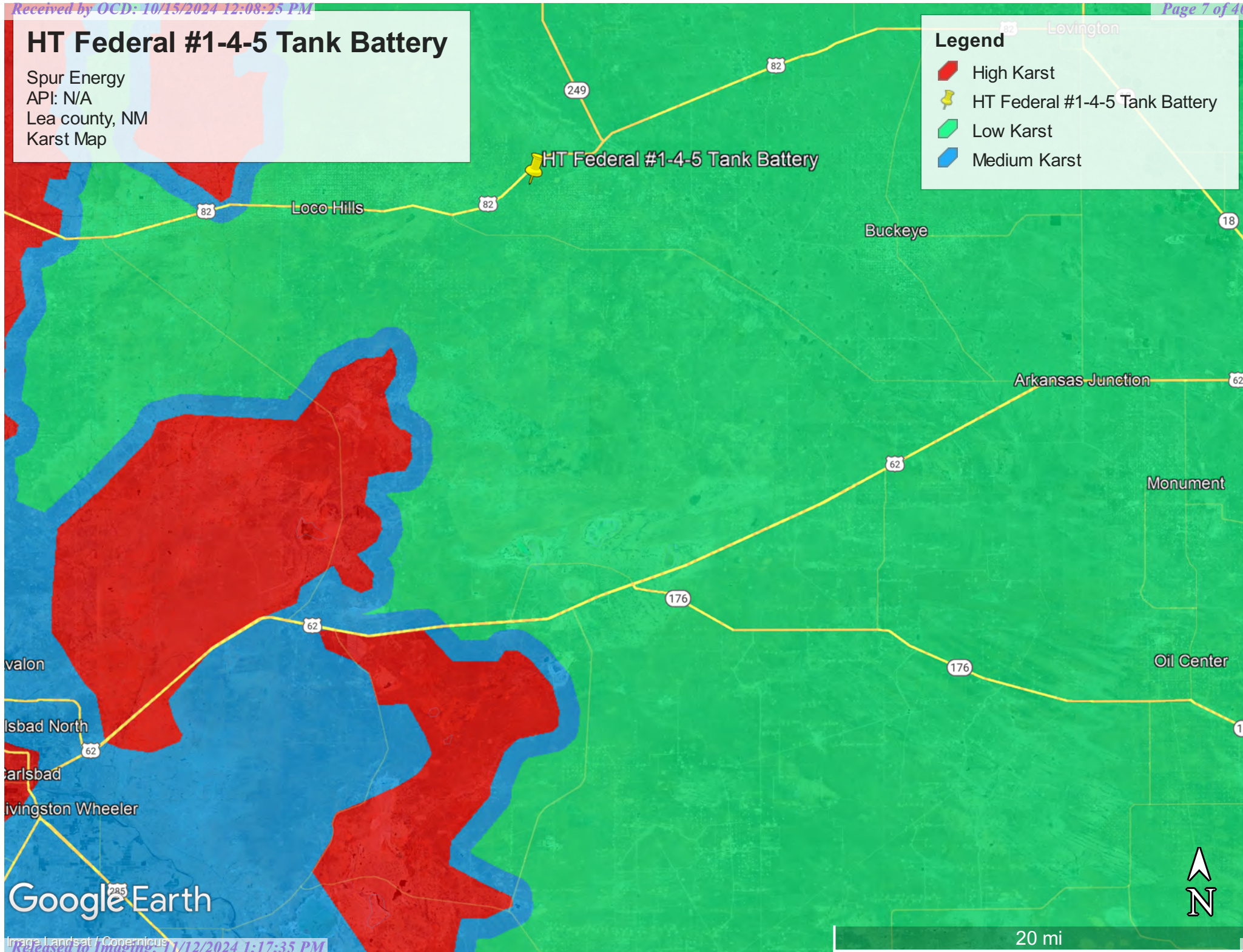


# HT Federal #1-4-5 Tank Battery

Spur Energy  
API: N/A  
Lea county, NM  
Karst Map

## Legend

- High Karst
- HT Federal #1-4-5 Tank Battery
- Low Karst
- Medium Karst




Google Earth



# HI Federal #1-4-5 Tank Battery

Spur Energy  
API: N/A  
Lea county, NM  
Site Map

## Legend

 Liner Inspection Area ~3,500ft2






## Appendix A

### Water Surveys:

- OSE
- USGS
- Surface Water Map



# Point of Diversion Summary

quarters are 1=NW 2=NE 3=SW 4=SE quarters are smallest to largest				NAD83 UTM in meters						
Well Tag	POD Nbr	Q64	Q16	Q4	Sec	Tws	Rng	X	Y	Map
NA	RA 13234 POD1	NW	SE	NW	19	17S	32E	611435.4	3632294.4	

\* UTM location was derived from PLSS - see Help

Driller License:	1249	Driller Company:	ATKINS ENGINEERING ASSOC. INC.
Driller Name:	JACKIE D. ATKINS		
Drill Start Date:	2022-10-20	Drill Finish Date:	2022-10-20
Log File Date:	2022-11-04	PCW Rcv Date:	
Pump Type:		Pipe Discharge Size:	
Casing Size:		Depth Well:	104
		Depth Water:	

## Water Bearing Stratifications:

Top	Bottom	Description
54	104	Sandstone/Gravel/Conglomerate

The data is furnished by the NMOSE/ISC and is accepted by the recipient with the expressed understanding that the OSE/ISC make no warranties, expressed or implied, concerning the accuracy, completeness, reliability, usability, or suitability for any particular purpose of the data.

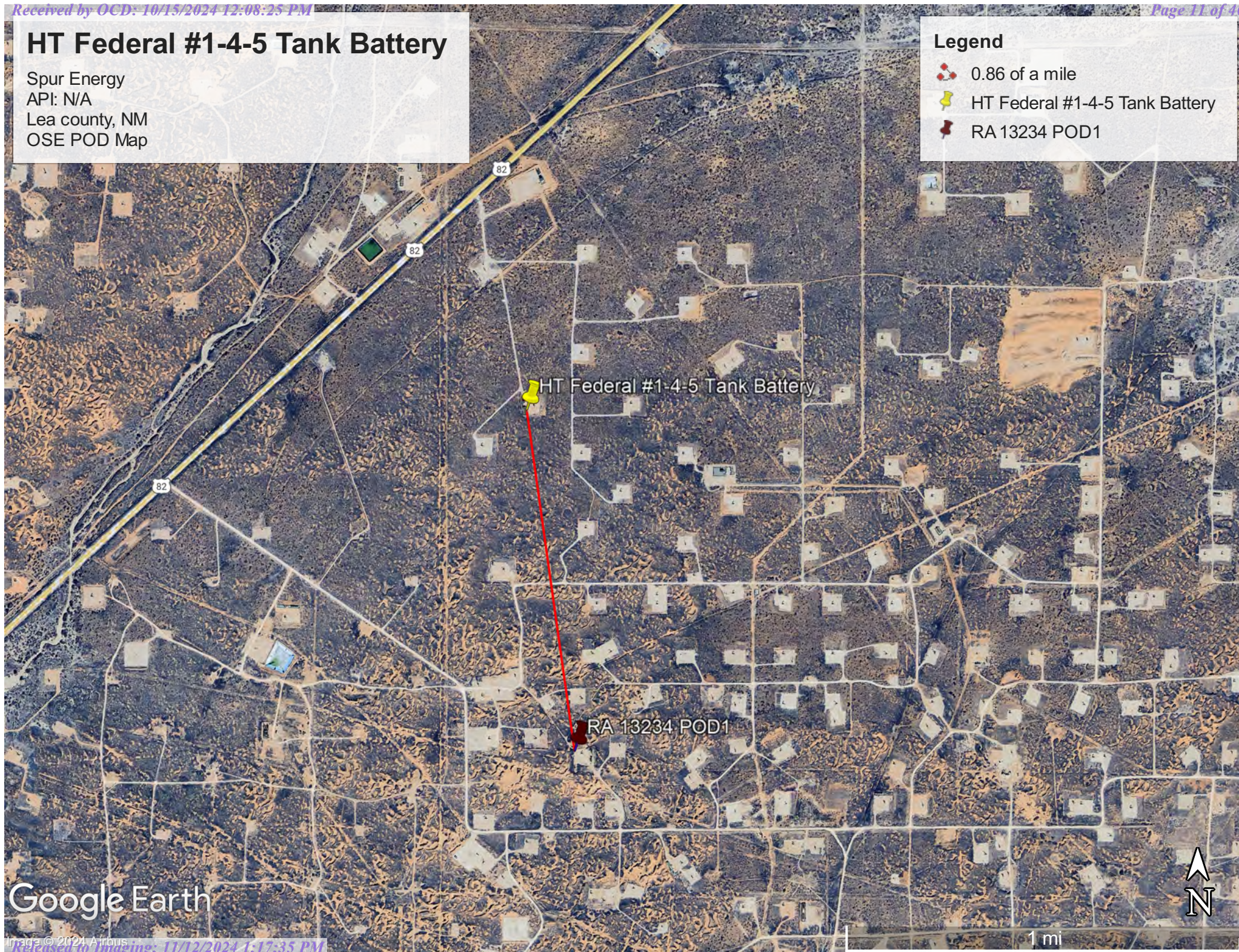


# HT Federal #1-4-5 Tank Battery

Spur Energy  
API: N/A  
Lea county, NM  
OSE POD Map

## Legend

- 0.86 of a mile
- HT Federal #1-4-5 Tank Battery
- RA 13234 POD1



Google Earth





[USGS Home](#)  
[Contact USGS](#)  
[Search USGS](#)

## National Water Information System: Web Interface

USGS Water Resources

Data Category:

Groundwater

Geographic Area:

United States

GO

Click to hide News Bulletins

- Explore the *NEW* [USGS National Water Dashboard](#) interactive map to access real-time water data from over 13,500 stations nationwide.

Groundwater levels for the Nation

 Important: [Next Generation Monitoring Location Page](#)

### Search Results -- 1 sites found

site\_no list =

- 325119103450101

Minimum number of levels = 1

[Save file of selected sites](#) to local disk for future upload

### USGS 325119103450101 17S.32E.03.43333

Available data for this site

Groundwater: Field measurements

GO

Lea County, New Mexico

Hydrologic Unit Code 13060011

Latitude 32°51'23", Longitude 103°45'12" NAD27

Land-surface elevation 4,206.30 feet above NGVD29

This well is completed in the High Plains aquifer (N100HGHPLN) national aquifer.

This well is completed in the Ogallala Formation (121OGLL) local aquifer.

#### Output formats

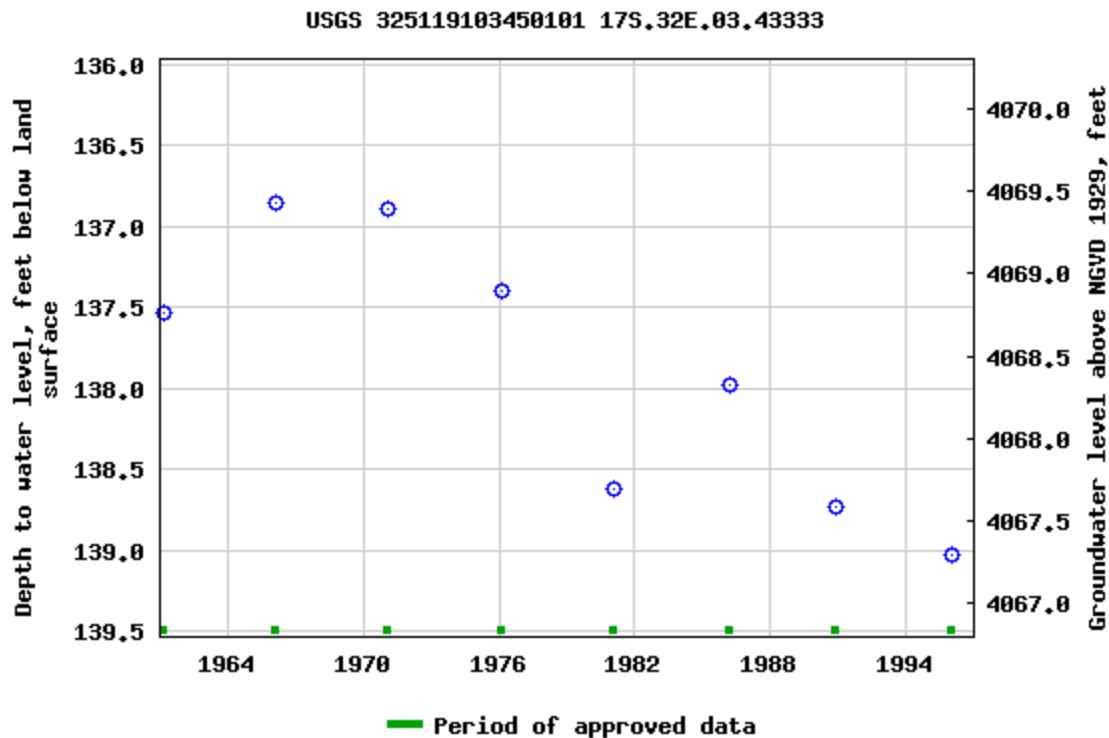
[Table of data](#)

[Tab-separated data](#)

[Graph of data](#)

[Reselect period](#)





Breaks in the plot represent a gap of at least one year between field measurements.

[Download a presentation-quality graph](#)

[Questions or Comments](#)

[Help](#)

[Data Tips](#)

[Explanation of terms](#)

[Subscribe for system changes](#)

[Accessibility](#)

[FOIA](#)

[Privacy](#)

[Policies and Notices](#)

[U.S. Department of the Interior](#) | [U.S. Geological Survey](#)

**Title: Groundwater for USA: Water Levels**

**URL: <https://nwis.waterdata.usgs.gov/nwis/gwlevels?>**



Page Contact Information: [USGS Water Data Support Team](#)

Page Last Modified: 2024-08-23 16:53:33 EDT

0.67 0.46 nadww01

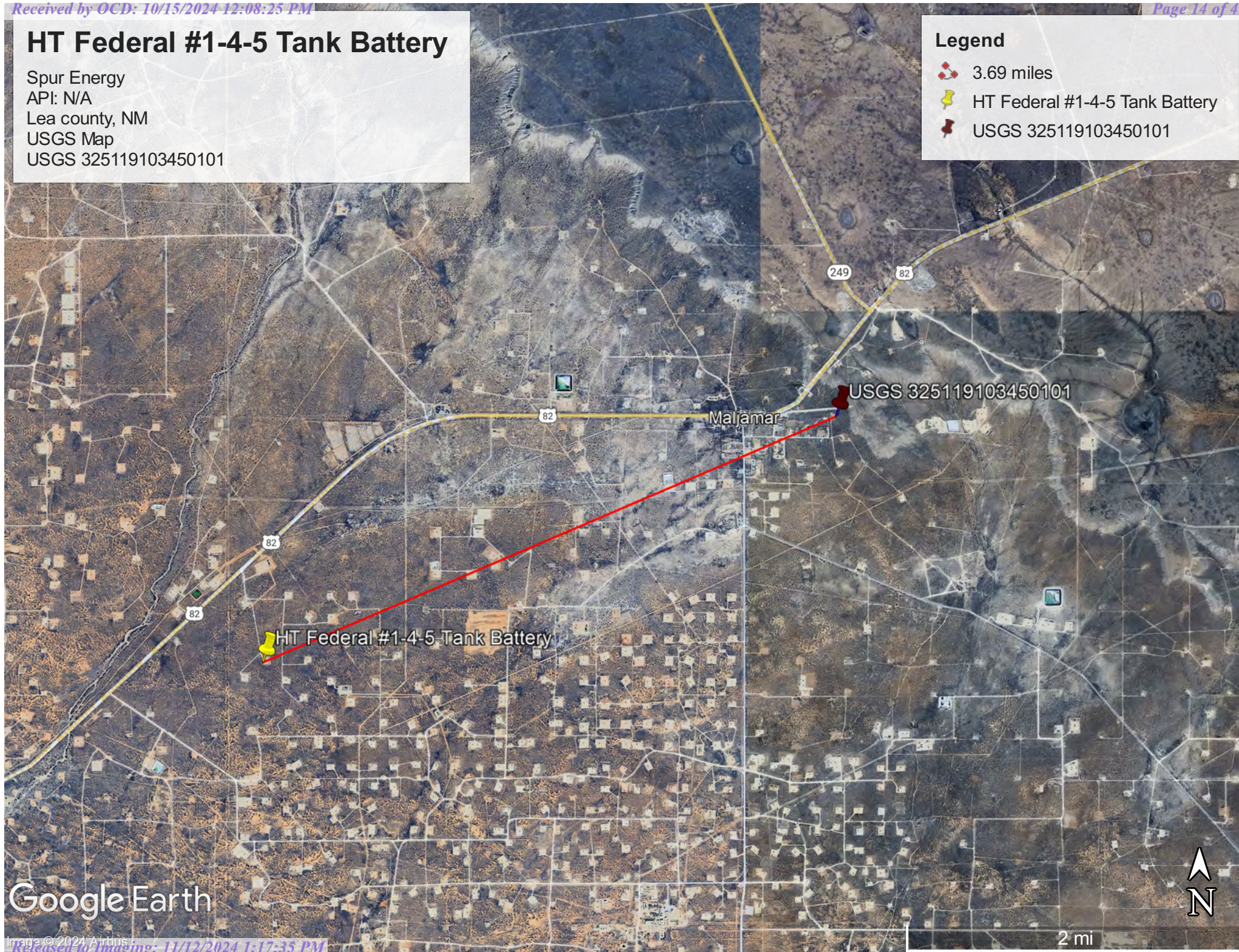


# HT Federal #1-4-5 Tank Battery

Spur Energy  
API: N/A  
Lea county, NM  
USGS Map  
USGS 325119103450101

## Legend

- 3.69 miles
- HT Federal #1-4-5 Tank Battery
- USGS 325119103450101



Google Earth

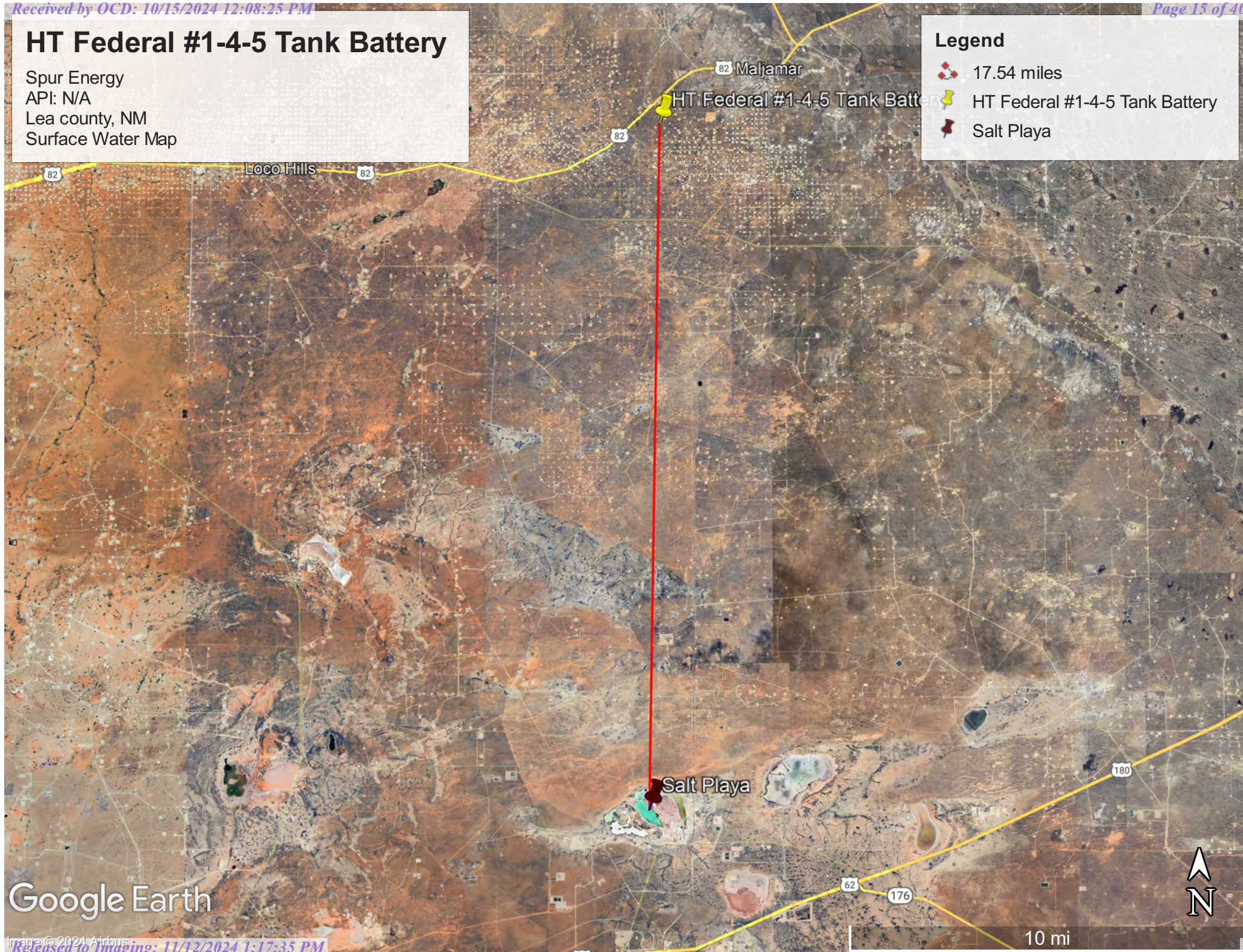


# HT Federal #1-4-5 Tank Battery

Spur Energy  
API: N/A  
Lea county, NM  
Surface Water Map

## Legend

- 17.54 miles
- HT Federal #1-4-5 Tank Battery
- Salt Playa



Google Earth



## Appendix B

- Soil Survey & Soil Maps
- Geological Data
- FEMA Flood Map
- Wetlands Map



Map Unit Description: Kermit-Palomas fine sands, 0 to 12 percent slopes---Lea County, New Mexico

---

## Lea County, New Mexico

### KD—Kermit-Palomas fine sands, 0 to 12 percent slopes

#### Map Unit Setting

*National map unit symbol:* dmpv

*Elevation:* 3,000 to 4,400 feet

*Mean annual precipitation:* 10 to 12 inches

*Mean annual air temperature:* 60 to 62 degrees F

*Frost-free period:* 190 to 205 days

*Farmland classification:* Not prime farmland

#### Map Unit Composition

*Kermit and similar soils:* 70 percent

*Palomas and similar soils:* 20 percent

*Minor components:* 10 percent

*Estimates are based on observations, descriptions, and transects of the mapunit.*

#### Description of Kermit

##### Setting

*Landform:* Dunes

*Landform position (two-dimensional):* Shoulder, backslope, footslope

*Landform position (three-dimensional):* Side slope

*Down-slope shape:* Concave, convex, linear

*Across-slope shape:* Convex

*Parent material:* Calcareous sandy eolian deposits derived from sedimentary rock

##### Typical profile

*A - 0 to 8 inches:* fine sand

*C - 8 to 60 inches:* fine sand

##### Properties and qualities

*Slope:* 3 to 12 percent

*Depth to restrictive feature:* More than 80 inches

*Drainage class:* Excessively drained

*Runoff class:* Very low

*Capacity of the most limiting layer to transmit water (Ksat):* Very high (20.00 in/hr)

*Depth to water table:* More than 80 inches

*Frequency of flooding:* None

*Frequency of ponding:* None

*Maximum salinity:* Nonsaline (0.0 to 1.0 mmhos/cm)

*Sodium adsorption ratio, maximum:* 2.0

*Available water supply, 0 to 60 inches:* Low (about 3.1 inches)

##### Interpretive groups

*Land capability classification (irrigated):* None specified

*Land capability classification (nonirrigated):* 7e



Map Unit Description: Kermit-Palomas fine sands, 0 to 12 percent slopes---Lea County, New Mexico

---

*Hydrologic Soil Group:* A  
*Ecological site:* R070BD005NM - Deep Sand  
*Hydric soil rating:* No

### **Description of Palomas**

#### **Setting**

*Landform:* Dunes  
*Landform position (two-dimensional):* Shoulder, backslope, footslope  
*Landform position (three-dimensional):* Side slope  
*Down-slope shape:* Concave, convex, linear  
*Across-slope shape:* Convex  
*Parent material:* Alluvium derived from sandstone

#### **Typical profile**

*A - 0 to 16 inches:* fine sand  
*Bt - 16 to 60 inches:* sandy clay loam  
*Bk - 60 to 66 inches:* sandy loam

#### **Properties and qualities**

*Slope:* 0 to 5 percent  
*Depth to restrictive feature:* More than 80 inches  
*Drainage class:* Well drained  
*Runoff class:* Low  
*Capacity of the most limiting layer to transmit water (Ksat):* Moderately high to high (0.60 to 2.00 in/hr)  
*Depth to water table:* More than 80 inches  
*Frequency of flooding:* None  
*Frequency of ponding:* None  
*Calcium carbonate, maximum content:* 50 percent  
*Gypsum, maximum content:* 1 percent  
*Maximum salinity:* Nonsaline to very slightly saline (0.0 to 2.0 mmhos/cm)  
*Sodium adsorption ratio, maximum:* 2.0  
*Available water supply, 0 to 60 inches:* Moderate (about 7.5 inches)

#### **Interpretive groups**

*Land capability classification (irrigated):* None specified  
*Land capability classification (nonirrigated):* 7e  
*Hydrologic Soil Group:* B  
*Ecological site:* R070BD003NM - Loamy Sand  
*Hydric soil rating:* No

### **Minor Components**

#### **Pyote**

*Percent of map unit:* 4 percent  
*Ecological site:* R070BD003NM - Loamy Sand  
*Hydric soil rating:* No

#### **Maljamar**

*Percent of map unit:* 4 percent



Map Unit Description: Kermit-Palomas fine sands, 0 to 12 percent slopes---Lea County, New Mexico

---

*Ecological site:* R070BD003NM - Loamy Sand  
*Hydric soil rating:* No

**Palomas**

*Percent of map unit:* 1 percent  
*Ecological site:* R070BD003NM - Loamy Sand  
*Hydric soil rating:* No

**Dune land**

*Percent of map unit:* 1 percent  
*Hydric soil rating:* No

## Data Source Information

Soil Survey Area: Lea County, New Mexico  
Survey Area Data: Version 20, Sep 6, 2023

Soil Map—Lea County, New Mexico



Natural Resources  
Conservation Service

Web Soil Survey  
National Cooperative Soil Survey

8/23/2024  
Page 1 of 3



## Soil Map—Lea County, New Mexico

## MAP LEGEND

## Area of Interest (AOI)

 Area of Interest (AOI)

## Soils

 Soil Map Unit Polygons

 Soil Map Unit Lines

 Soil Map Unit Points

## Special Point Features



Blowout



Borrow Pit



Clay Spot



Closed Depression



Gravel Pit



Gravelly Spot



Landfill



Lava Flow



Marsh or swamp



Mine or Quarry



Miscellaneous Water



Perennial Water



Rock Outcrop



Saline Spot



Sandy Spot



Severely Eroded Spot



Sinkhole



Slide or Slip



Sodic Spot



Spoil Area



Stony Spot



Very Stony Spot



Wet Spot



Other



Special Line Features

## Water Features



Streams and Canals

## Transportation



Rails



Interstate Highways



US Routes



Major Roads



Local Roads

## Background



Aerial Photography

## MAP INFORMATION

The soil surveys that comprise your AOI were mapped at 1:20,000.

Warning: Soil Map may not be valid at this scale.

Enlargement of maps beyond the scale of mapping can cause misunderstanding of the detail of mapping and accuracy of soil line placement. The maps do not show the small areas of contrasting soils that could have been shown at a more detailed scale.

Please rely on the bar scale on each map sheet for map measurements.

Source of Map: Natural Resources Conservation Service

Web Soil Survey URL:

Coordinate System: Web Mercator (EPSG:3857)

Maps from the Web Soil Survey are based on the Web Mercator projection, which preserves direction and shape but distorts distance and area. A projection that preserves area, such as the Albers equal-area conic projection, should be used if more accurate calculations of distance or area are required.

This product is generated from the USDA-NRCS certified data as of the version date(s) listed below.

Soil Survey Area: Lea County, New Mexico

Survey Area Data: Version 20, Sep 6, 2023

Soil map units are labeled (as space allows) for map scales 1:50,000 or larger.

Date(s) aerial images were photographed: Feb 7, 2020—May 12, 2020

The orthophoto or other base map on which the soil lines were compiled and digitized probably differs from the background imagery displayed on these maps. As a result, some minor shifting of map unit boundaries may be evident.

Map Unit Legend

Map Unit Symbol	Map Unit Name	Acres in AOI	Percent of AOI
KD	Kermit-Palomas fine sands, 0 to 12 percent slopes	1.8	100.0%
Totals for Area of Interest		1.8	100.0%



(<https://www.usgs.gov/>)

Mineral Resources (<https://www.usgs.gov/energy-and-minerals/mineral-resources-program>)  
/ Online Spatial Data (/) / Geology (/geology/) / by state (/geology/state/)  
/ New Mexico (/geology/state/state.php?state=NM)

## Eolian and piedmont deposits

XML (/geology/state/xml/NMQep;0)

JSON (/geology/state/json/NMQep;0)

Shapefile (/geology/state/unit-shape.php?unit=NMQep;0)

*Interlayered eolian sands and piedmont-slope deposits along the eastern flank of the Pecos River valley, primarily between Roswell and Carlsbad. Typically capped by thin eolian deposits.*

State	New Mexico (/geology/state/state.php?state=NM)		
Name	Eolian and piedmont deposits		
Geologic age	Holocene to middle Pleistocene		
Lithologic constituents	Major Unconsolidated (Eolian) Interlayered eolian sands and piedmont-slope deposits		
References	New Mexico Bureau of Geology and Mineral Resources, 2003, Geologic Map of New Mexico, scale 1:500,000 (includes some new polygons, faults, and attributes not in NM001 - heads up digitizing by JHorton).		
NGMDB product	NGMDB product page for 22974 ( <a href="https://ngmdb.usgs.gov/Prodesc/proddesc_22974.htm">https://ngmdb.usgs.gov/Prodesc/proddesc_22974.htm</a> )		

---

**Counties**

Chaves (/geology/state/fips-unit.php?code=f35005) - DeBaca (/geology/state/fips-unit.php?code=f35011) - Eddy (/geology/state/fips-unit.php?code=f35015) - Lea (/geology/state/fips-unit.php?code=f35025) - Roosevelt (/geology/state/fips-unit.php?code=f35041)

---

[DOI Privacy Policy \(https://www.doi.gov/privacy\)](https://www.doi.gov/privacy) | [Legal \(https://www.usgs.gov/laws/policies\\_notices.html\)](https://www.usgs.gov/laws/policies_notices.html) | [Accessibility \(https://www2.usgs.gov/laws/accessibility.html\)](https://www2.usgs.gov/laws/accessibility.html) | [Site Map \(https://www.usgs.gov/sitemap.html\)](https://www.usgs.gov/sitemap.html) | [Contact USGS \(https://answers.usgs.gov/\)](https://answers.usgs.gov/)

---

[U.S. Department of the Interior \(https://www.doi.gov/\)](https://www.doi.gov/) | [DOI Inspector General \(https://www.doioig.gov/\)](https://www.doioig.gov/) | [White House \(https://www.whitehouse.gov/\)](https://www.whitehouse.gov/) | [E-gov \(https://www.whitehouse.gov/omb/management/egov/\)](https://www.whitehouse.gov/omb/management/egov/) | [No Fear Act \(https://www.doi.gov/pmb/eeo/no-fear-act\)](https://www.doi.gov/pmb/eeo/no-fear-act) | [FOIA \(https://www2.usgs.gov/foia\)](https://www2.usgs.gov/foia)

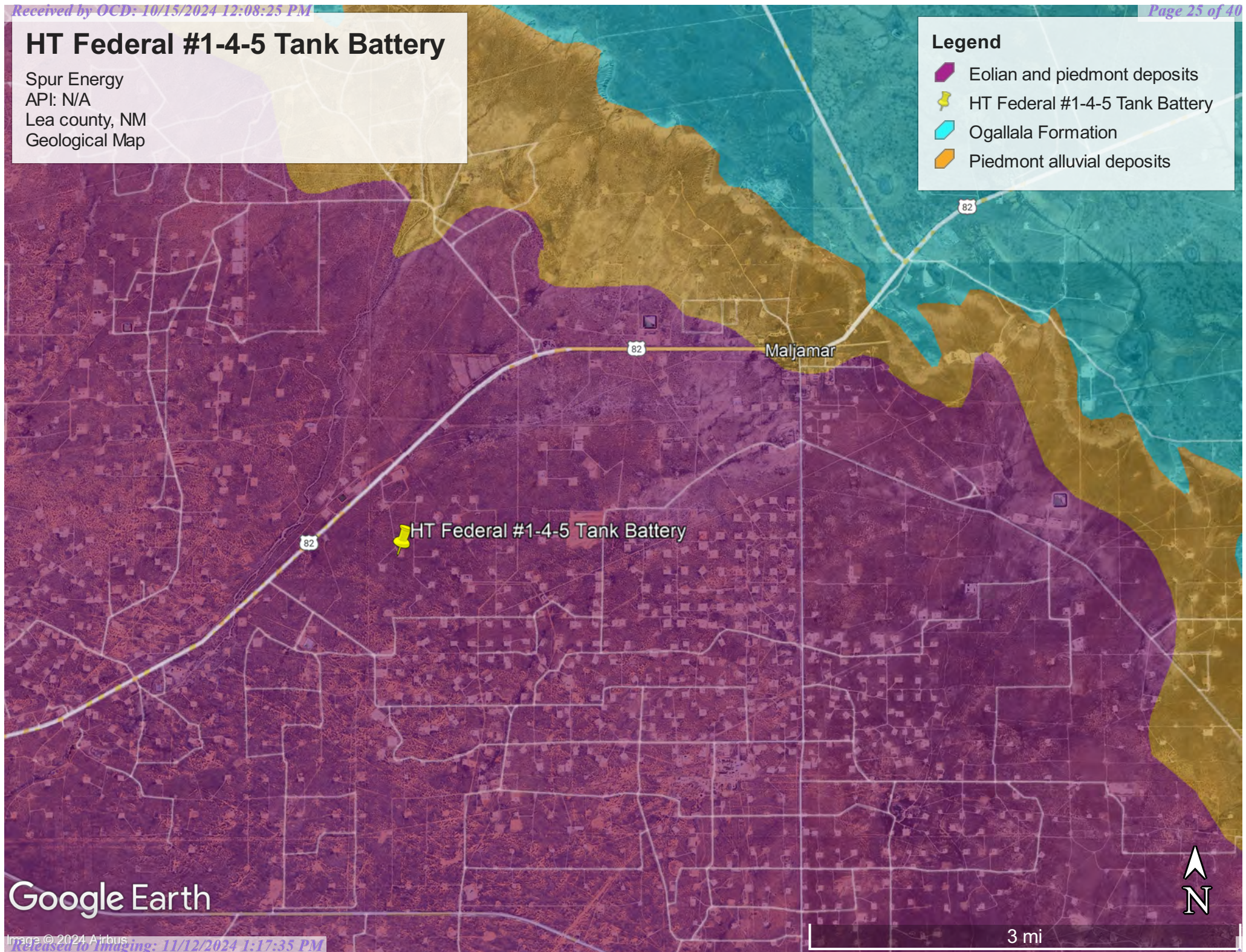


# HT Federal #1-4-5 Tank Battery

Spur Energy  
API: N/A  
Lea county, NM  
Geological Map

## Legend

- Eolian and piedmont deposits
- HT Federal #1-4-5 Tank Battery
- Ogallala Formation
- Piedmont alluvial deposits



Google Earth



# National Flood Hazard Layer FIRMette



103°49'W 32°50'22"N



## Legend

SEE FIS REPORT FOR DETAILED LEGEND AND INDEX MAP FOR FIRM PANEL LAYOUT

SPECIAL FLOOD HAZARD AREAS		Without Base Flood Elevation (BFE) Zone A, V, A99
		With BFE or Depth Zone AE, AO, AH, VE, AR
		Regulatory Floodway
OTHER AREAS OF FLOOD HAZARD		0.2% Annual Chance Flood Hazard, Areas of 1% annual chance flood with average depth less than one foot or with drainage areas of less than one square mile Zone X
		Future Conditions 1% Annual Chance Flood Hazard Zone X
		Area with Reduced Flood Risk due to Levee. See Notes. Zone X
		Area with Flood Risk due to Levee Zone D
OTHER AREAS		NO SCREEN Area of Minimal Flood Hazard Zone X
		Effective LOMRs
		Area of Undetermined Flood Hazard Zone D
GENERAL STRUCTURES		Channel, Culvert, or Storm Sewer
		Levee, Dike, or Floodwall
OTHER FEATURES		20.2 Cross Sections with 1% Annual Chance Water Surface Elevation
		17.5
		Coastal Transect
		Base Flood Elevation Line (BFE)
		Limit of Study
		Jurisdiction Boundary
		Coastal Transect Baseline
MAP PANELS		Digital Data Available
		No Digital Data Available
		Unmapped



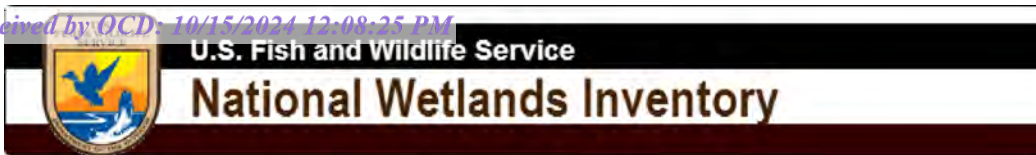
The pin displayed on the map is an approximate point selected by the user and does not represent an authoritative property location.

This map complies with FEMA's standards for the use of digital flood maps if it is not void as described below. The basemap shown complies with FEMA's basemap accuracy standards

The flood hazard information is derived directly from the authoritative NFHL web services provided by FEMA. This map was exported on 8/23/2024 at 5:08 PM and does not reflect changes or amendments subsequent to this date and time. The NFHL and effective information may change or become superseded by new data over time.

This map image is void if the one or more of the following map elements do not appear: basemap imagery, flood zone labels, legend, scale bar, map creation date, community identifiers, FIRM panel number, and FIRM effective date. Map images for unmapped and unmodernized areas cannot be used for regulatory purposes.





## Wetlands Map



August 23, 2024

**Wetlands**

- Estuarine and Marine Deepwater
- Estuarine and Marine Wetland

- Freshwater Emergent Wetland
- Freshwater Forested/Shrub Wetland
- Freshwater Pond

- Lake
- Other
- Riverine

This map is for general reference only. The US Fish and Wildlife Service is not responsible for the accuracy or currentness of the base data shown on this map. All wetlands related data should be used in accordance with the layer metadata found on the Wetlands Mapper web site.



## Appendix C

- 48-Hour Notification
- Liner Inspection Form



**Sebastian@pimaoil.com**

---

**From:** OCDOnline@state.nm.us  
**Sent:** Monday, September 16, 2024 6:19 PM  
**To:** sebastian@pimaoil.com  
**Subject:** The Oil Conservation Division (OCD) has accepted the application, Application ID: 384090

To whom it may concern (c/o Sebastian Orozco for Spur Energy Partners LLC),

The OCD has received the submitted *Notification for Liner Inspection for a Release* (C-141L), for incident ID (n#) nAPP2423430255.

The liner inspection is expected to take place:

**When:** 09/19/2024 @ 08:00

**Where:** E-18-17S-32E 0 FNL 0 FEL (32.83528,-103.81156)

**Additional Information:** Marisa Loya  
575-416-0639

**Additional Instructions:** 32.83528,-103.81156

An OCD representative may be available onsite at the date and time reported. In the absence or presence of an OCD representative, liner inspection pursuant to 19.15.29.11.A(5)(a) NMAC is required. Should there be a change in the scheduled date and time of the sampling event, then another notification should be resubmitted through OCD permitting as soon as possible.

- **Failure to notify the OCD of liner inspections including any changes in date/time per the requirements of 19.15.29.11.A(5)(a)(ii) NMAC, may result in the inspection not being accepted.**

If you have any questions regarding this application, or don't know why you have received this email, please contact us.

**New Mexico Energy, Minerals and Natural Resources Department**  
1220 South St. Francis Drive  
Santa Fe, NM 87505



Pima Environmental Services, LLC

**Liner Inspection Form**Company Name: Spur EnergySite: HT Federal #1-4-5 Tank BatteryLat/Long: 32.83528, -103.81156

NMOCD Incident ID

& Incident Date: NAPP2423430255 08/20/2024

2-Day Notification

Sent: via Email by Sebastian Orozco on OCD portal 09/16/2024Inspection Date: 09/19/2024

Liner Type:      Earthen w/liner                      Earthen no liner                      Polystar

**Steel w/poly liner**                      Steel w/spray epoxy                      No Liner

Other: \_\_\_\_\_

Visualization	Yes	No	Comments
Is there a tear in the liner?		X	
Are there holes in the liner?		X	
Is the liner retaining any fluids?	X		Minor standing fluid from pressure washing activities.
Does the liner have integrity to contain a leak?	X		

Comments: \_\_\_\_\_

Inspector Name: Marisa Loya      Inspector Signature: Marisa Loya





## Appendix D

### ○ Photographic Documentation

PHOTOGRAPHIC

DOCUMENTATION SITE NAME:

Liner Inspection:

HT Federal #1-4-5 Tank Battery



Photo of liner pursuant to power wash. Liquid from power washer.

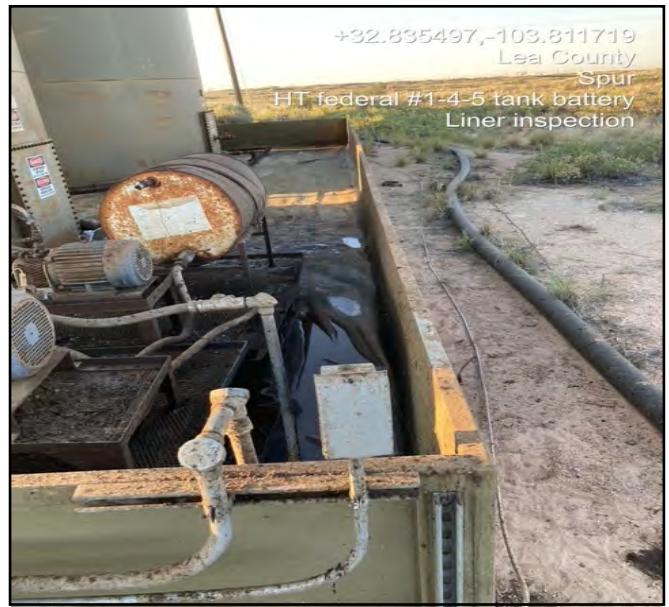


Photo of liner pursuant to power wash. Liquid from power washer.



Photo of liner pursuant to power wash. Liquid from power washer.

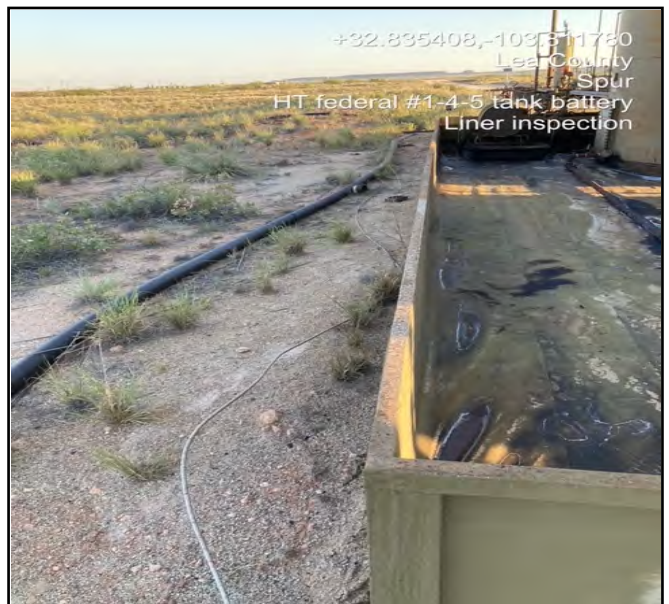


Photo of liner pursuant to power wash. Liquid from power washer.





Photo of liner pursuant to power wash. Liquid from power washer.



Photo of liner pursuant to power wash. Liquid from power washer.



Photo of liner pursuant to power wash. Liquid from power washer.



Photo of liner pursuant to power wash.



Photo of liner pursuant to power wash. Liquid from power washer.



Photo of liner pursuant to power wash.



**District I**  
1625 N. French Dr., Hobbs, NM 88240  
Phone:(575) 393-6161 Fax:(575) 393-0720  
**District II**  
811 S. First St., Artesia, NM 88210  
Phone:(575) 748-1283 Fax:(575) 748-9720  
**District III**  
1000 Rio Brazos Rd., Aztec, NM 87410  
Phone:(505) 334-6178 Fax:(505) 334-6170  
**District IV**  
1220 S. St Francis Dr., Santa Fe, NM 87505  
Phone:(505) 476-3470 Fax:(505) 476-3462

State of New Mexico  
Energy, Minerals and Natural Resources  
Oil Conservation Division  
1220 S. St Francis Dr.  
Santa Fe, NM 87505

QUESTIONS  
Action 392743

QUESTIONS

Operator: Spur Energy Partners LLC 9655 Katy Freeway Houston, TX 77024	OGRID: 328947
	Action Number: 392743
	Action Type: [C-141] Remediation Closure Request C-141 (C-141-v-Closure)

QUESTIONS

Prerequisites	
Incident ID (n#)	nAPP2423430255
Incident Name	NAPP2423430255 HT 18 FED 1-4-5 TANK BATTERY @ 0
Incident Type	Produced Water Release
Incident Status	Remediation Closure Report Received

Location of Release Source

Please answer all the questions in this group.

Site Name	HT 18 FED 1-4-5 TANK BATTERY
Date Release Discovered	08/20/2024
Surface Owner	Federal

Incident Details

Please answer all the questions in this group.

Incident Type	Produced Water Release
Did this release result in a fire or is the result of a fire	No
Did this release result in any injuries	No
Has this release reached or does it have a reasonable probability of reaching a watercourse	No
Has this release endangered or does it have a reasonable probability of endangering public health	No
Has this release substantially damaged or will it substantially damage property or the environment	No
Is this release of a volume that is or may with reasonable probability be detrimental to fresh water	No

Nature and Volume of Release

Material(s) released, please answer all that apply below. Any calculations or specific justifications for the volumes provided should be attached to the follow-up C-141 submission.

Crude Oil Released (bbls) Details	Not answered.
Produced Water Released (bbls) Details	Cause: Corrosion   Pipeline (Any)   Produced Water   Released: 65 BBL   Recovered: 65 BBL   Lost: 0 BBL.
Is the concentration of chloride in the produced water >10,000 mg/l	No
Condensate Released (bbls) Details	Not answered.
Natural Gas Vented (Mcf) Details	Not answered.
Natural Gas Flared (Mcf) Details	Not answered.
Other Released Details	Not answered.
Are there additional details for the questions above (i.e. any answer containing Other, Specify, Unknown, and/or Fire, or any negative lost amounts)	CORROSION OF A 4" STEEL LINE TO A WATER TANK CAUSED PRODUCED WATER TO LEAK INTO THE LINED CONTAINMENT

**District I**

1625 N. French Dr., Hobbs, NM 88240  
Phone:(575) 393-6161 Fax:(575) 393-0720

**District II**

811 S. First St., Artesia, NM 88210  
Phone:(575) 748-1283 Fax:(575) 748-9720

**District III**

1000 Rio Brazos Rd., Aztec, NM 87410  
Phone:(505) 334-6178 Fax:(505) 334-6170

**District IV**

1220 S. St Francis Dr., Santa Fe, NM 87505  
Phone:(505) 476-3470 Fax:(505) 476-3462

**State of New Mexico**  
**Energy, Minerals and Natural Resources**  
**Oil Conservation Division**  
**1220 S. St Francis Dr.**  
**Santa Fe, NM 87505**

QUESTIONS, Page 2

Action 392743

**QUESTIONS (continued)**

Operator: Spur Energy Partners LLC 9655 Katy Freeway Houston, TX 77024	OGRID:	328947
	Action Number:	392743
	Action Type:	[C-141] Remediation Closure Request C-141 (C-141-v-Closure)

**QUESTIONS**

<b>Nature and Volume of Release (continued)</b>	
Is this a gas only submission (i.e. only significant Mcf values reported)	No, according to supplied volumes this does not appear to be a "gas only" report.
Was this a major release as defined by Subsection A of 19.15.29.7 NMAC	Yes
Reasons why this would be considered a submission for a notification of a major release	From paragraph A. "Major release" determine using: (1) an unauthorized release of a volume, excluding gases, of 25 barrels or more.
With the implementation of the 19.15.27 NMAC (05/25/2021), venting and/or flaring of natural gas (i.e. gas only) are to be submitted on the C-129 form.	

**Initial Response**

The responsible party must undertake the following actions immediately unless they could create a safety hazard that would result in injury.

The source of the release has been stopped	True
The impacted area has been secured to protect human health and the environment	True
Released materials have been contained via the use of berms or dikes, absorbent pads, or other containment devices	True
All free liquids and recoverable materials have been removed and managed appropriately	True
If all the actions described above have not been undertaken, explain why	N/A

Per Paragraph (4) of Subsection B of 19.15.29.8 NMAC the responsible party may commence remediation immediately after discovery of a release. If remediation has begun, please prepare and attach a narrative of actions to date in the follow-up C-141 submission. If remedial efforts have been successfully completed or if the release occurred within a lined containment area (see Subparagraph (a) of Paragraph (5) of Subsection A of 19.15.29.11 NMAC), please prepare and attach all information needed for closure evaluation in the follow-up C-141 submission.

I hereby certify that the information given above is true and complete to the best of my knowledge and understand that pursuant to OCD rules and regulations all operators are required to report and/or file certain release notifications and perform corrective actions for releases which may endanger public health or the environment. The acceptance of a C-141 report by the OCD does not relieve the operator of liability should their operations have failed to adequately investigate and remediate contamination that pose a threat to groundwater, surface water, human health or the environment. In addition, OCD acceptance of a C-141 report does not relieve the operator of responsibility for compliance with any other federal, state, or local laws and/or regulations.

I hereby agree and sign off to the above statement	Name: Katherine Purvis Title: EHS Coordinator Email: katherine.purvis@spurenergy.com Date: 08/21/2024
--	--



**District I**

1625 N. French Dr., Hobbs, NM 88240  
Phone:(575) 393-6161 Fax:(575) 393-0720

**District II**

811 S. First St., Artesia, NM 88210  
Phone:(575) 748-1283 Fax:(575) 748-9720

**District III**

1000 Rio Brazos Rd., Aztec, NM 87410  
Phone:(505) 334-6178 Fax:(505) 334-6170

**District IV**

1220 S. St Francis Dr., Santa Fe, NM 87505  
Phone:(505) 476-3470 Fax:(505) 476-3462

**State of New Mexico**  
**Energy, Minerals and Natural Resources**  
**Oil Conservation Division**  
**1220 S. St Francis Dr.**  
**Santa Fe, NM 87505**

QUESTIONS, Page 3

Action 392743

**QUESTIONS (continued)**

Operator: Spur Energy Partners LLC 9655 Katy Freeway Houston, TX 77024	OGRID:
	328947
	Action Number:
	392743
	Action Type:
	[C-141] Remediation Closure Request C-141 (C-141-v-Closure)

**QUESTIONS****Site Characterization**

Please answer all the questions in this group (only required when seeking remediation plan approval and beyond). This information must be provided to the appropriate district office no later than 90 days after the release discovery date.

What is the shallowest depth to groundwater beneath the area affected by the release in feet below ground surface (ft bgs)	Between 100 and 500 (ft.)
What method was used to determine the depth to ground water	NM OSE iWaters Database Search
Did this release impact groundwater or surface water	No
<b>What is the minimum distance, between the closest lateral extents of the release and the following surface areas:</b>	
A continuously flowing watercourse or any other significant watercourse	Between 1 and 5 (mi.)
Any lakebed, sinkhole, or playa lake (measured from the ordinary high-water mark)	Between 1 and 5 (mi.)
An occupied permanent residence, school, hospital, institution, or church	Between 1 and 5 (mi.)
A spring or a private domestic fresh water well used by less than five households for domestic or stock watering purposes	Between 1 and 5 (mi.)
Any other fresh water well or spring	Between 1 and 5 (mi.)
Incorporated municipal boundaries or a defined municipal fresh water well field	Between 1 and 5 (mi.)
A wetland	Between 1 and 5 (mi.)
A subsurface mine	Between 1 and 5 (mi.)
An (non-karst) unstable area	Between 1 and 5 (mi.)
Categorize the risk of this well / site being in a karst geology	Low
A 100-year floodplain	Between 1 and 5 (mi.)
Did the release impact areas not on an exploration, development, production, or storage site	No

**Remediation Plan**

Please answer all the questions that apply or are indicated. This information must be provided to the appropriate district office no later than 90 days after the release discovery date.

Requesting a remediation plan approval with this submission	Yes
Attach a comprehensive report demonstrating the lateral and vertical extents of soil contamination associated with the release have been determined, pursuant to 19.15.29.11 NMAC and 19.15.29.13 NMAC.	
Have the lateral and vertical extents of contamination been fully delineated	Yes
Was this release entirely contained within a lined containment area	Yes
Per Subsection B of 19.15.29.11 NMAC unless the site characterization report includes completed efforts at remediation, the report must include a proposed remediation plan in accordance with 19.15.29.12 NMAC, which includes the anticipated timelines for beginning and completing the remediation.	
On what estimated date will the remediation commence	09/19/2024
On what date will (or did) the final sampling or liner inspection occur	09/19/2024
On what date will (or was) the remediation complete(d)	09/19/2024
What is the estimated surface area (in square feet) that will be remediated	3500
What is the estimated volume (in cubic yards) that will be remediated	0
These estimated dates and measurements are recognized to be the best guess or calculation at the time of submission and may (be) change(d) over time as more remediation efforts are completed.	
The OCD recognizes that proposed remediation measures may have to be minimally adjusted in accordance with the physical realities encountered during remediation. If the responsible party has any need to significantly deviate from the remediation plan proposed, then it should consult with the division to determine if another remediation plan submission is required.	

**District I**

1625 N. French Dr., Hobbs, NM 88240  
Phone:(575) 393-6161 Fax:(575) 393-0720

**District II**

811 S. First St., Artesia, NM 88210  
Phone:(575) 748-1283 Fax:(575) 748-9720

**District III**

1000 Rio Brazos Rd., Aztec, NM 87410  
Phone:(505) 334-6178 Fax:(505) 334-6170

**District IV**

1220 S. St Francis Dr., Santa Fe, NM 87505  
Phone:(505) 476-3470 Fax:(505) 476-3462

**State of New Mexico**  
**Energy, Minerals and Natural Resources**  
**Oil Conservation Division**  
**1220 S. St Francis Dr.**  
**Santa Fe, NM 87505**

QUESTIONS, Page 4

Action 392743

**QUESTIONS (continued)**

Operator: Spur Energy Partners LLC 9655 Katy Freeway Houston, TX 77024	OGRID:	328947
	Action Number:	392743
	Action Type:	[C-141] Remediation Closure Request C-141 (C-141-v-Closure)

**QUESTIONS**

<b>Remediation Plan (continued)</b>	
<i>Please answer all the questions that apply or are indicated. This information must be provided to the appropriate district office no later than 90 days after the release discovery date.</i>	
<b>This remediation will (or is expected to) utilize the following processes to remediate / reduce contaminants:</b>	
<i>(Select all answers below that apply.)</i>	
Is (or was) there affected material present needing to be removed	No
Is (or was) there a power wash of the lined containment area (to be) performed	Yes
OTHER (Non-listed remedial process)	Not answered.
<i>Per Subsection B of 19.15.29.11 NMAC unless the site characterization report includes completed efforts at remediation, the report must include a proposed remediation plan in accordance with 19.15.29.12 NMAC, which includes the anticipated timelines for beginning and completing the remediation.</i>	
I hereby certify that the information given above is true and complete to the best of my knowledge and understand that pursuant to OCD rules and regulations all operators are required to report and/or file certain release notifications and perform corrective actions for releases which may endanger public health or the environment. The acceptance of a C-141 report by the OCD does not relieve the operator of liability should their operations have failed to adequately investigate and remediate contamination that pose a threat to groundwater, surface water, human health or the environment. In addition, OCD acceptance of a C-141 report does not relieve the operator of responsibility for compliance with any other federal, state, or local laws and/or regulations.	
I hereby agree and sign off to the above statement	Name: Katherine Purvis Title: EHS Coordinator Email: katherine.purvis@spurenergy.com Date: 10/15/2024
<i>The OCD recognizes that proposed remediation measures may have to be minimally adjusted in accordance with the physical realities encountered during remediation. If the responsible party has any need to significantly deviate from the remediation plan proposed, then it should consult with the division to determine if another remediation plan submission is required.</i>	



**District I**

1625 N. French Dr., Hobbs, NM 88240  
Phone:(575) 393-6161 Fax:(575) 393-0720

**District II**

811 S. First St., Artesia, NM 88210  
Phone:(575) 748-1283 Fax:(575) 748-9720

**District III**

1000 Rio Brazos Rd., Aztec, NM 87410  
Phone:(505) 334-6178 Fax:(505) 334-6170

**District IV**

1220 S. St Francis Dr., Santa Fe, NM 87505  
Phone:(505) 476-3470 Fax:(505) 476-3462

**State of New Mexico**  
**Energy, Minerals and Natural Resources**  
**Oil Conservation Division**  
**1220 S. St Francis Dr.**  
**Santa Fe, NM 87505**

QUESTIONS, Page 6

Action 392743

**QUESTIONS (continued)**

Operator: Spur Energy Partners LLC 9655 Katy Freeway Houston, TX 77024	OGRID:	328947
	Action Number:	392743
	Action Type:	[C-141] Remediation Closure Request C-141 (C-141-v-Closure)

**QUESTIONS**

<b>Liner Inspection Information</b>	
Last liner inspection notification (C-141L) recorded	<b>384090</b>
Liner inspection date pursuant to Subparagraph (a) of Paragraph (5) of Subsection A of 19.15.29.11 NMAC	<b>09/19/2024</b>
Was all the impacted materials removed from the liner	<b>Yes</b>
What was the liner inspection surface area in square feet	<b>3500</b>

**Remediation Closure Request**

*Only answer the questions in this group if seeking remediation closure for this release because all remediation steps have been completed.*

Requesting a remediation closure approval with this submission	<b>Yes</b>
Have the lateral and vertical extents of contamination been fully delineated	<b>Yes</b>
Was this release entirely contained within a lined containment area	<b>Yes</b>
What was the total surface area (in square feet) remediated	<b>3500</b>
What was the total volume (cubic yards) remediated	<b>0</b>
Summarize any additional remediation activities not included by answers (above)	<b>LINER WAS POWERWASHED AND INSPECTED AND FOUND TO HAVE THE ABILITY TO CONTAIN FLUIDS</b>

*The responsible party must attach information demonstrating they have complied with all applicable closure requirements and any conditions or directives of the OCD. This demonstration should be in the form of a comprehensive report (in .pdf format) including a scaled site map, sampling diagrams, relevant field notes, photographs of any excavation prior to backfilling, laboratory data including chain of custody documents of final sampling, and a narrative of the remedial activities. Refer to 19.15.29.12 NMAC.*

I hereby certify that the information given above is true and complete to the best of my knowledge and understand that pursuant to OCD rules and regulations all operators are required to report and/or file certain release notifications and perform corrective actions for releases which may endanger public health or the environment. The acceptance of a C-141 report by the OCD does not relieve the operator of liability should their operations have failed to adequately investigate and remediate contamination that pose a threat to groundwater, surface water, human health or the environment. In addition, OCD acceptance of a C-141 report does not relieve the operator of responsibility for compliance with any other federal, state, or local laws and/or regulations. The responsible party acknowledges they must substantially restore, reclaim, and re-vegetate the impacted surface area to the conditions that existed prior to the release or their final land use in accordance with 19.15.29.13 NMAC including notification to the OCD when reclamation and re-vegetation are complete.

I hereby agree and sign off to the above statement	Name: Katherine Purvis Title: EHS Coordinator Email: katherine.purvis@spurenergy.com Date: 10/15/2024
--	--

**District I**  
1625 N. French Dr., Hobbs, NM 88240  
Phone:(575) 393-6161 Fax:(575) 393-0720  
**District II**  
811 S. First St., Artesia, NM 88210  
Phone:(575) 748-1283 Fax:(575) 748-9720  
**District III**  
1000 Rio Brazos Rd., Aztec, NM 87410  
Phone:(505) 334-6178 Fax:(505) 334-6170  
**District IV**  
1220 S. St Francis Dr., Santa Fe, NM 87505  
Phone:(505) 476-3470 Fax:(505) 476-3462

**State of New Mexico**  
**Energy, Minerals and Natural Resources**  
**Oil Conservation Division**  
**1220 S. St Francis Dr.**  
**Santa Fe, NM 87505**

CONDITIONS  
  
Action 392743

CONDITIONS

Operator: Spur Energy Partners LLC 9655 Katy Freeway Houston, TX 77024	OGRID:
	328947
	Action Number:
	392743
Action Type: [C-141] Remediation Closure Request C-141 (C-141-v-Closure)	

CONDITIONS

Created By	Condition	Condition Date
rhamlet	We have received your Remediation Closure Report for Incident #NAPP2423430255 HT 18 FED 1-4-5 TANK BATTERY, thank you. This Remediation Closure Report is approved.	11/12/2024