

Sante Fe Main Office
Phone: (505) 476-3441

General Information
Phone: (505) 629-6116

Online Phone Directory
<https://www.emnrd.nm.gov/ocd/contact-us>

State of New Mexico
Energy, Minerals and Natural Resources
Oil Conservation Division
1220 S. St Francis Dr.
Santa Fe, NM 87505

QUESTIONS

Action 422155

QUESTIONS

Operator: CIMAREX ENERGY CO. OF COLORADO 6001 Deauville Blvd Midland, TX 79706	OGRID: 162683
	Action Number: 422155
	Action Type: [NOTIFY] Notification Of Release (NOR)

QUESTIONS

Location of Release Source	
<i>Please answer all the questions in this group.</i>	
Site Name	HALLERTAU 5 FED 7H-11H,16H
Date Release Discovered	01/18/2025
Surface Owner	Federal

Incident Details	
<i>Please answer all the questions in this group.</i>	
Incident Type	Oil Release
Did this release result in a fire or is the result of a fire	No
Did this release result in any injuries	No
Has this release reached or does it have a reasonable probability of reaching a watercourse	No
Has this release endangered or does it have a reasonable probability of endangering public health	No
Has this release substantially damaged or will it substantially damage property or the environment	No
Is this release of a volume that is or may with reasonable probability be detrimental to fresh water	No

Nature and Volume of Release	
<i>Material(s) released, please answer all that apply below. Any calculations or specific justifications for the volumes provided should be attached to the follow-up C-141 submission.</i>	
Crude Oil Released (bbls) Details	Cause: Equipment Failure Tank (Any) Crude Oil Released: 46 BBL Recovered: 46 BBL Lost: 0 BBL.
Produced Water Released (bbls) Details	Not answered.
Is the concentration of chloride in the produced water >10,000 mg/l	Not answered.
Condensate Released (bbls) Details	Not answered.
Natural Gas Vented (Mcf) Details	Not answered.
Natural Gas Flared (Mcf) Details	Not answered.
Other Released Details	Not answered.
Are there additional details for the questions above (i.e. any answer containing Other, Specify, Unknown, and/or Fire, or any negative lost amounts)	The facility saw HLP on the 3rd party take-away system, causing the water transfer pump to shut down on pressure safety high. This caused the water tank levels to rise, which ESD all wells, as designed, with the exception of Hallertau 5 Federal 8H. As the 8H continued to flow, the tank levels continued to rise resulting in the release out of tank thief hatch. All fluids remained inside the lined containment and have been recovered by a vac truck. The containment will be washed and a liner inspection will be scheduled in the coming days.

Sante Fe Main Office
Phone: (505) 476-3441

General Information
Phone: (505) 629-6116

Online Phone Directory
<https://www.emnrd.nm.gov/ocd/contact-us>

State of New Mexico
Energy, Minerals and Natural Resources
Oil Conservation Division
1220 S. St Francis Dr.
Santa Fe, NM 87505

QUESTIONS, Page 2

Action 422155

QUESTIONS (continued)

Operator: CIMAREX ENERGY CO. OF COLORADO 6001 Deauville Blvd Midland, TX 79706	OGRID: 162683
	Action Number: 422155
	Action Type: [NOTIFY] Notification Of Release (NOR)

QUESTIONS

Nature and Volume of Release (continued)	
Is this a gas only submission (i.e. only significant Mcf values reported)	No, according to supplied volumes this does not appear to be a "gas only" report.
Was this a major release as defined by Subsection A of 19.15.29.7 NMAC	Yes
Reasons why this would be considered a submission for a notification of a major release	From paragraph A. "Major release" determine using: (1) an unauthorized release of a volume, excluding gases, of 25 barrels or more.
With the implementation of the 19.15.27 NMAC (05/25/2021), venting and/or flaring of natural gas (i.e. gas only) are to be submitted on the C-129 form.	

Initial Response

The responsible party must undertake the following actions immediately unless they could create a safety hazard that would result in injury.

The source of the release has been stopped	True
The impacted area has been secured to protect human health and the environment	True
Released materials have been contained via the use of berms or dikes, absorbent pads, or other containment devices	True
All free liquids and recoverable materials have been removed and managed appropriately	True
If all the actions described above have not been undertaken, explain why	Not answered.

Per Paragraph 4 of Subsection B of 19.15.29.8 NMAC the responsible party may commence remediation immediately after discovery of a release. If remediation has begun, please prepare and attach a narrative of actions to date in the follow-up C-141 submission. If remedial efforts have been successfully completed or if the release occurred within a lined containment area (see 19.15.29.11(A)(5)(a) NMAC), please prepare and attach all information needed for closure evaluation in the follow-up C-141 submission.

Sante Fe Main Office
Phone: (505) 476-3441

General Information
Phone: (505) 629-6116

Online Phone Directory
<https://www.emnrd.nm.gov/ocd/contact-us>

State of New Mexico
Energy, Minerals and Natural Resources
Oil Conservation Division
1220 S. St Francis Dr.
Santa Fe, NM 87505

ACKNOWLEDGMENTS

Action 422155

ACKNOWLEDGMENTS

Operator: CIMAREX ENERGY CO. OF COLORADO 6001 Deauville Blvd Midland, TX 79706	OGRID: 162683
	Action Number: 422155
	Action Type: [NOTIFY] Notification Of Release (NOR)

ACKNOWLEDGMENTS

<input checked="" type="checkbox"/>	I acknowledge that I am authorized to submit notification of a release on behalf of my operator.
<input checked="" type="checkbox"/>	I acknowledge that upon submitting this application, I will be creating a new incident file (assigned to my operator) to track the notification(s) and corrective action(s) for a release, pursuant to NMAC 19.15.29.
<input checked="" type="checkbox"/>	I acknowledge that creating a new incident file will require my operator to file subsequent submission(s) of form "C-141, Application for administrative approval of a release notification and corrective action", pursuant to NMAC 19.15.29.
<input checked="" type="checkbox"/>	I hereby certify that the information given above is true and complete to the best of my knowledge and understand that pursuant to OCD rules and regulations all operators are required to report and/or file certain release notifications and perform corrective actions for releases which may endanger public health or the environment.
<input checked="" type="checkbox"/>	I acknowledge the fact that the acceptance of a C-141 report by the OCD does not relieve the operator of liability should their operations have failed to adequately investigate and remediate contamination that pose a threat to groundwater, surface water, human health or the environment.
<input checked="" type="checkbox"/>	I acknowledge the fact that, in addition, OCD acceptance of a C-141 report does not relieve the operator of responsibility for compliance with any other federal, state, or local laws and/or regulations.

Sante Fe Main Office
Phone: (505) 476-3441

General Information
Phone: (505) 629-6116

Online Phone Directory
<https://www.emnrd.nm.gov/ocd/contact-us>

State of New Mexico
Energy, Minerals and Natural Resources
Oil Conservation Division
1220 S. St Francis Dr.
Santa Fe, NM 87505

CONDITIONS

Action 422155

CONDITIONS

Operator: CIMAREX ENERGY CO. OF COLORADO 6001 Deauville Blvd Midland, TX 79706	OGRID: 162683
	Action Number: 422155
	Action Type: [NOTIFY] Notification Of Release (NOR)

CONDITIONS

Created By	Condition	Condition Date
lluig	When submitting future reports regarding this release, please submit the calculations used or specific justification for the volumes reported on the initial C-141.	1/18/2025



CIMAREX ENERGY
HALLERTAU 5 FED 7H-11H,16H
LEA, NM

4:44

[< Back](#)

Square/Rectangle Contained Spill with Vessel
Displacement

Hallertau 5 Fed 7H-16H CTB

L(Ft)

W(Ft)

D(In)

Oil %

155

90

.25

100

Tank Size (Ft)

Tank Count

21.6

4



H2O Spill Before Disp: 0.00

Tank Displacement Vol: 5.44

Oil Spill Total: 51.76

H2O Spill Total: -5.44

Total Bbls Spilled: 46.32

Total Gals Spilled: 1,945.44

Screenshot for future reference!



CIMAREX ENERGY
HALLERTAU 5 FED 7H-11H,16H
LEA, NM





CIMAREX ENERGY
HALLERTAU 5 FED 7H-11H,16H
LEA, NM



Sante Fe Main Office
Phone: (505) 476-3441

General Information
Phone: (505) 629-6116

Online Phone Directory
<https://www.emnrd.nm.gov/ocd/contact-us>

State of New Mexico
Energy, Minerals and Natural Resources
Oil Conservation Division
1220 S. St Francis Dr.
Santa Fe, NM 87505

QUESTIONS

Action 422160

QUESTIONS

Operator: CIMAREX ENERGY CO. OF COLORADO 6001 Deauville Blvd Midland, TX 79706	OGRID: 162683
	Action Number: 422160
	Action Type: [C-141] Initial C-141 (C-141-v-Initial)

QUESTIONS

Prerequisites	
Incident ID (n#)	nAPP2501859534
Incident Name	NAPP2501859534 HALLERTAU 5 FED 7H-11H,16H @ 0
Incident Type	Oil Release
Incident Status	Initial C-141 Received
Incident Facility	[fAPP2126956613] Hallertau 5

Location of Release Source	
Please answer all the questions in this group.	
Site Name	HALLERTAU 5 FED 7H-11H,16H
Date Release Discovered	01/18/2025
Surface Owner	Federal

Incident Details	
Please answer all the questions in this group.	
Incident Type	Oil Release
Did this release result in a fire or is the result of a fire	No
Did this release result in any injuries	No
Has this release reached or does it have a reasonable probability of reaching a watercourse	No
Has this release endangered or does it have a reasonable probability of endangering public health	No
Has this release substantially damaged or will it substantially damage property or the environment	No
Is this release of a volume that is or may with reasonable probability be detrimental to fresh water	No

Nature and Volume of Release	
Material(s) released, please answer all that apply below. Any calculations or specific justifications for the volumes provided should be attached to the follow-up C-141 submission.	
Crude Oil Released (bbls) Details	Cause: Equipment Failure Tank (Any) Crude Oil Released: 46 BBL Recovered: 46 BBL Lost: 0 BBL.
Produced Water Released (bbls) Details	Not answered.
Is the concentration of chloride in the produced water >10,000 mg/l	No
Condensate Released (bbls) Details	Not answered.
Natural Gas Vented (Mcf) Details	Not answered.
Natural Gas Flared (Mcf) Details	Not answered.
Other Released Details	Not answered.
Are there additional details for the questions above (i.e. any answer containing Other, Specify, Unknown, and/or Fire, or any negative lost amounts)	The facility saw HLP on the 3rd party take-away system, causing the water transfer pump to shut down on pressure safety high. This caused the water tank levels to rise, which ESD all wells, as designed, with the exception of Hallertau 5 Federal 8H. As the 8H continued to flow, the tank levels continued to rise resulting in the release out of tank thief hatch. All fluids remained inside the lined containment and have been recovered by a vac truck. The containment will be washed and a liner inspection will be scheduled in the coming days.

Sante Fe Main Office
Phone: (505) 476-3441

General Information
Phone: (505) 629-6116

Online Phone Directory
<https://www.emnrd.nm.gov/ocd/contact-us>

State of New Mexico
Energy, Minerals and Natural Resources
Oil Conservation Division
1220 S. St Francis Dr.
Santa Fe, NM 87505

QUESTIONS, Page 2

Action 422160

QUESTIONS (continued)

Operator: CIMAREX ENERGY CO. OF COLORADO 6001 Deauville Blvd Midland, TX 79706	OGRID: 162683
	Action Number: 422160
	Action Type: [C-141] Initial C-141 (C-141-v-Initial)

QUESTIONS

Nature and Volume of Release (continued)	
Is this a gas only submission (i.e. only significant Mcf values reported)	No, according to supplied volumes this does not appear to be a "gas only" report.
Was this a major release as defined by Subsection A of 19.15.29.7 NMAC	Yes
Reasons why this would be considered a submission for a notification of a major release	From paragraph A. "Major release" determine using: (1) an unauthorized release of a volume, excluding gases, of 25 barrels or more.
With the implementation of the 19.15.27 NMAC (05/25/2021), venting and/or flaring of natural gas (i.e. gas only) are to be submitted on the C-129 form.	

Initial Response

The responsible party must undertake the following actions immediately unless they could create a safety hazard that would result in injury.

The source of the release has been stopped	True
The impacted area has been secured to protect human health and the environment	True
Released materials have been contained via the use of berms or dikes, absorbent pads, or other containment devices	True
All free liquids and recoverable materials have been removed and managed appropriately	True
If all the actions described above have not been undertaken, explain why	Not answered.

Per Paragraph (4) of Subsection B of 19.15.29.8 NMAC the responsible party may commence remediation immediately after discovery of a release. If remediation has begun, please prepare and attach a narrative of actions to date in the follow-up C-141 submission. If remedial efforts have been successfully completed or if the release occurred within a lined containment area (see Subparagraph (a) of Paragraph (5) of Subsection A of 19.15.29.11 NMAC), please prepare and attach all information needed for closure evaluation in the follow-up C-141 submission.

I hereby certify that the information given above is true and complete to the best of my knowledge and understand that pursuant to OCD rules and regulations all operators are required to report and/or file certain release notifications and perform corrective actions for releases which may endanger public health or the environment. The acceptance of a C-141 report by the OCD does not relieve the operator of liability should their operations have failed to adequately investigate and remediate contamination that pose a threat to groundwater, surface water, human health or the environment. In addition, OCD acceptance of a C-141 report does not relieve the operator of responsibility for compliance with any other federal, state, or local laws and/or regulations.

I hereby agree and sign off to the above statement	Name: Laci Luig Title: ES&H Specialist Email: DL_PermianEnvironmental@coterra.com Date: 01/18/2025
--	---

Sante Fe Main Office
Phone: (505) 476-3441

General Information
Phone: (505) 629-6116

Online Phone Directory
<https://www.emnrd.nm.gov/ocd/contact-us>

State of New Mexico
Energy, Minerals and Natural Resources
Oil Conservation Division
1220 S. St Francis Dr.
Santa Fe, NM 87505

QUESTIONS, Page 3

Action 422160

QUESTIONS (continued)

Operator: CIMAREX ENERGY CO. OF COLORADO 6001 Deauville Blvd Midland, TX 79706	OGRID: 162683
	Action Number: 422160
	Action Type: [C-141] Initial C-141 (C-141-v-Initial)

QUESTIONS

Site Characterization	
<i>Please answer all the questions in this group (only required when seeking remediation plan approval and beyond). This information must be provided to the appropriate district office no later than 90 days after the release discovery date.</i>	
What is the shallowest depth to groundwater beneath the area affected by the release in feet below ground surface (ft bgs)	Not answered.
What method was used to determine the depth to ground water	Not answered.
Did this release impact groundwater or surface water	Not answered.
What is the minimum distance, between the closest lateral extents of the release and the following surface areas:	
A continuously flowing watercourse or any other significant watercourse	Not answered.
Any lakebed, sinkhole, or playa lake (measured from the ordinary high-water mark)	Not answered.
An occupied permanent residence, school, hospital, institution, or church	Not answered.
A spring or a private domestic fresh water well used by less than five households for domestic or stock watering purposes	Not answered.
Any other fresh water well or spring	Not answered.
Incorporated municipal boundaries or a defined municipal fresh water well field	Not answered.
A wetland	Not answered.
A subsurface mine	Not answered.
An (non-karst) unstable area	Not answered.
Categorize the risk of this well / site being in a karst geology	Not answered.
A 100-year floodplain	Not answered.
Did the release impact areas not on an exploration, development, production, or storage site	Not answered.

Remediation Plan	
<i>Please answer all the questions that apply or are indicated. This information must be provided to the appropriate district office no later than 90 days after the release discovery date.</i>	
Requesting a remediation plan approval with this submission	No
<i>The OCD recognizes that proposed remediation measures may have to be minimally adjusted in accordance with the physical realities encountered during remediation. If the responsible party has any need to significantly deviate from the remediation plan proposed, then it should consult with the division to determine if another remediation plan submission is required.</i>	

Sante Fe Main Office
Phone: (505) 476-3441

General Information
Phone: (505) 629-6116

Online Phone Directory
<https://www.emnrd.nm.gov/ocd/contact-us>

State of New Mexico
Energy, Minerals and Natural Resources
Oil Conservation Division
1220 S. St Francis Dr.
Santa Fe, NM 87505

CONDITIONS

Action 422160

CONDITIONS

Operator: CIMAREX ENERGY CO. OF COLORADO 6001 Deauville Blvd Midland, TX 79706	OGRID: 162683
	Action Number: 422160
	Action Type: [C-141] Initial C-141 (C-141-v-Initial)

CONDITIONS

Created By	Condition	Condition Date
rhamlet	None	1/24/2025

Sante Fe Main Office
Phone: (505) 476-3441

General Information
Phone: (505) 629-6116

Online Phone Directory
<https://www.emnrd.nm.gov/ocd/contact-us>

State of New Mexico
Energy, Minerals and Natural Resources
Oil Conservation Division
1220 S. St Francis Dr.
Santa Fe, NM 87505

QUESTIONS

Action 424620

QUESTIONS

Operator: CIMAREX ENERGY CO. 6001 Deauville Blvd Midland, TX 79706	OGRID: 215099
	Action Number: 424620
	Action Type: [NOTIFY] Notification Of Liner Inspection (C-141L)

QUESTIONS

Prerequisites	
Incident ID (n#)	nAPP2501859534
Incident Name	NAPP2501859534 HALLERTAU 5 FED 7H-11H,16H @ 0
Incident Type	Oil Release
Incident Status	Initial C-141 Approved
Incident Facility	[fAPP2126956613] Hallertau 5

Location of Release Source	
Site Name	HALLERTAU 5 FED 7H-11H,16H
Date Release Discovered	01/18/2025
Surface Owner	Federal

Liner Inspection Event Information	
<i>Please answer all the questions in this group.</i>	
What is the liner inspection surface area in square feet	10,670
Have all the impacted materials been removed from the liner	Yes
Liner inspection date pursuant to Subparagraph (a) of Paragraph (5) of Subsection A of 19.15.29.11 NMAC	01/29/2025
Time liner inspection will commence	11:00 AM
Please provide any information necessary for observers to liner inspection	Inspecting tank containment.
Please provide any information necessary for navigation to liner inspection site	GPS Coordinates: 32.06744, -103.70180

Sante Fe Main Office
Phone: (505) 476-3441

General Information
Phone: (505) 629-6116

Online Phone Directory
<https://www.emnrd.nm.gov/oed/contact-us>

State of New Mexico
Energy, Minerals and Natural Resources
Oil Conservation Division
1220 S. St Francis Dr.
Santa Fe, NM 87505

CONDITIONS

Action 424620

CONDITIONS

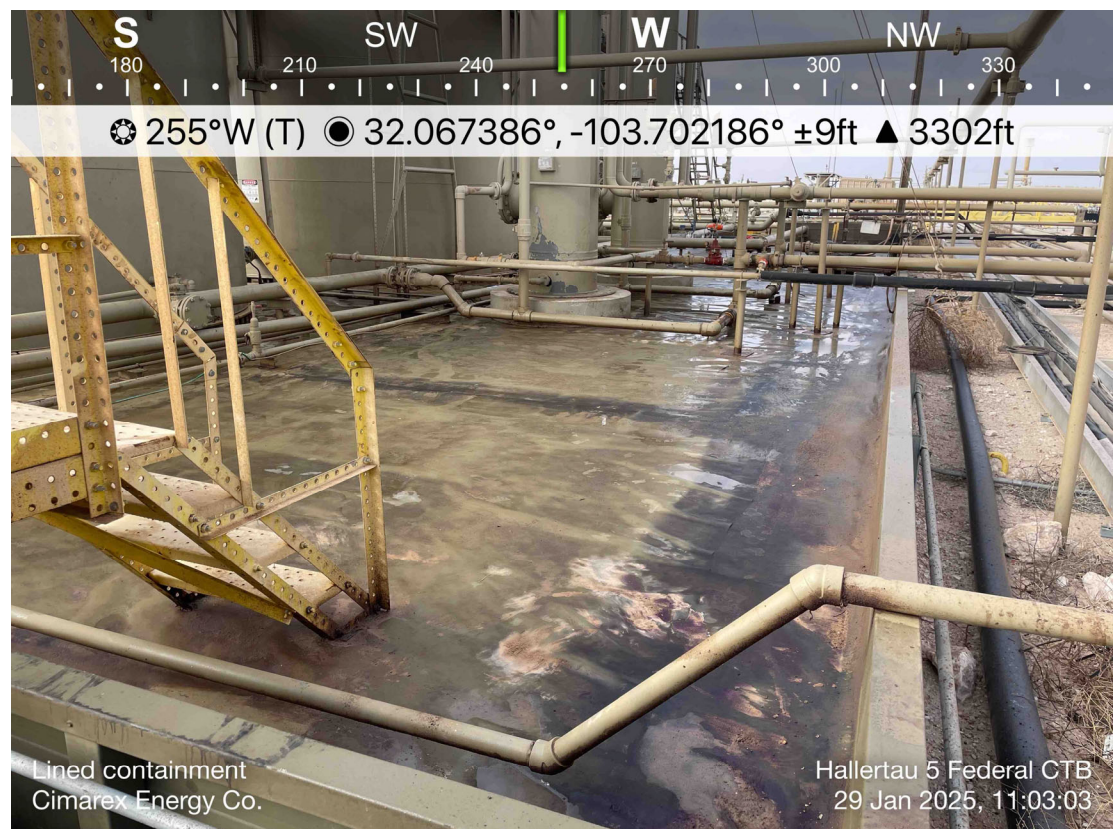
Operator: CIMAREX ENERGY CO. 6001 Deauville Blvd Midland, TX 79706	OGRID: 215099
	Action Number: 424620
	Action Type: [NOTIFY] Notification Of Liner Inspection (C-141L)

CONDITIONS

Created By	Condition	Condition Date
lluig	Failure to notify the OCD of liner inspections including any changes in date/time per the requirements of 19.15.29.11.A(5)(a)(ii) NMAC, may result in the inspection not being accepted.	1/24/2025

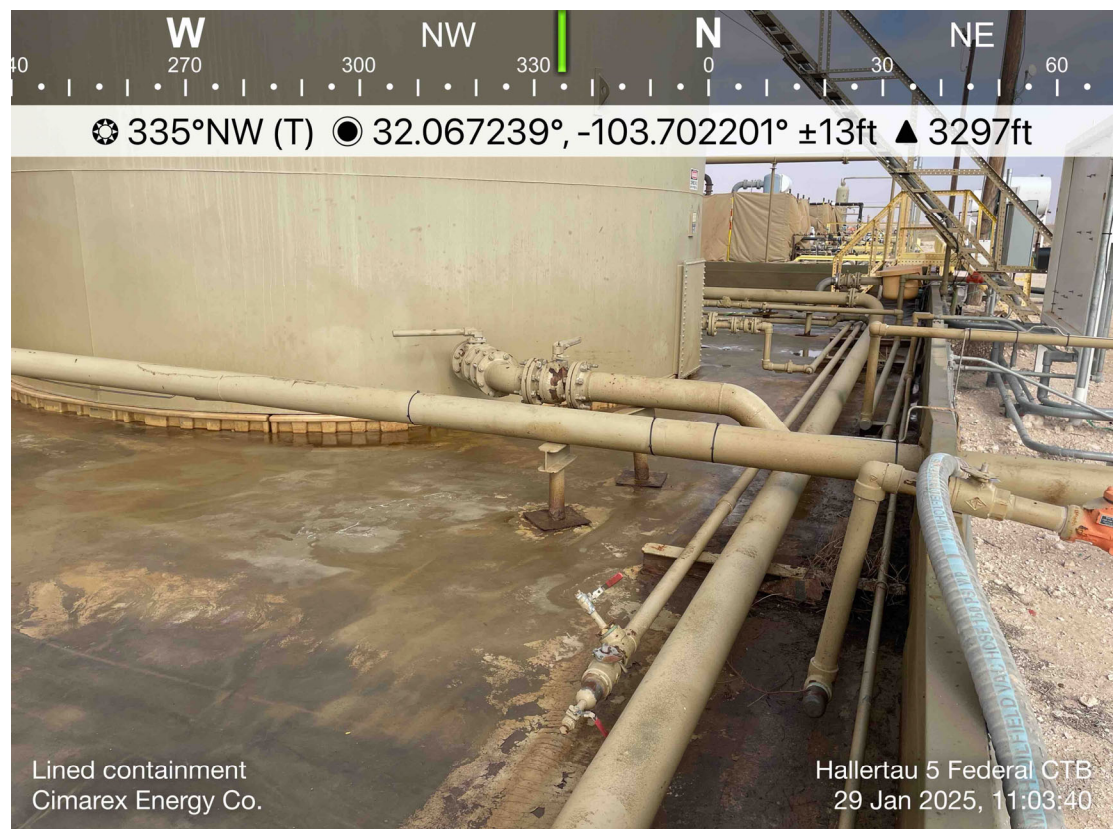


CIMAREX ENERGY
HALLERTAU 5 FED CTB
LEA, NM



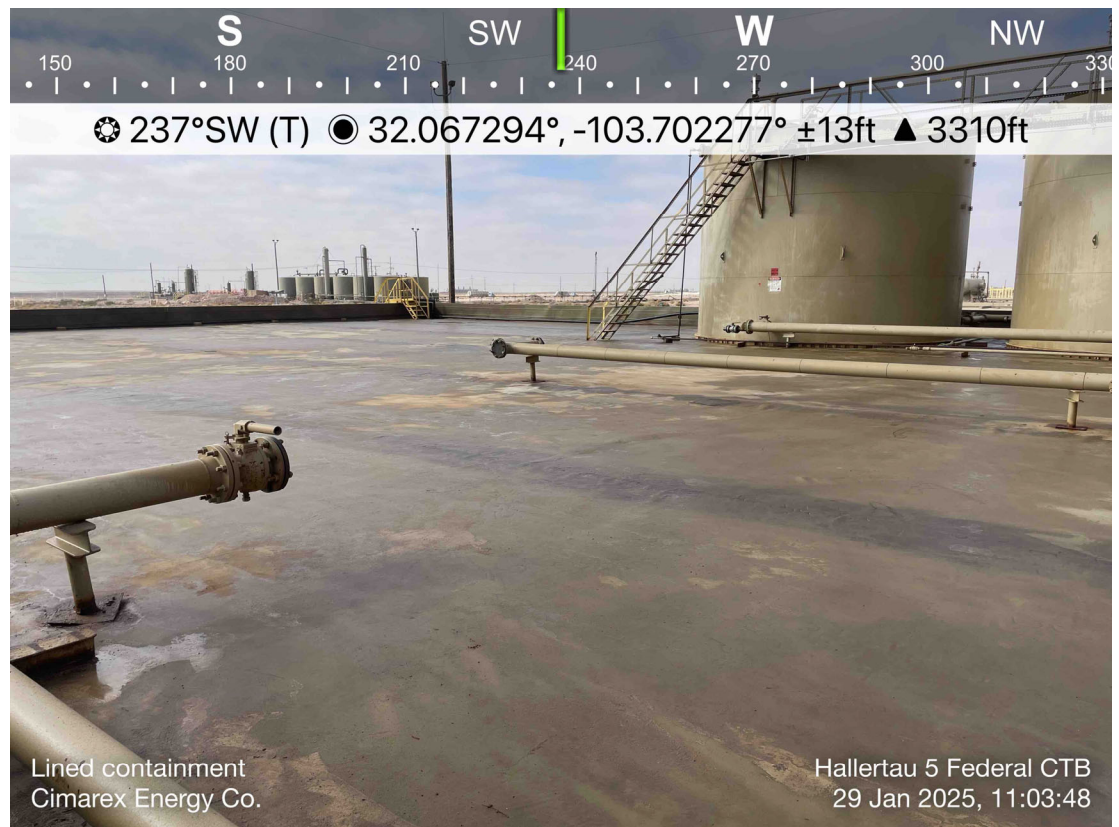
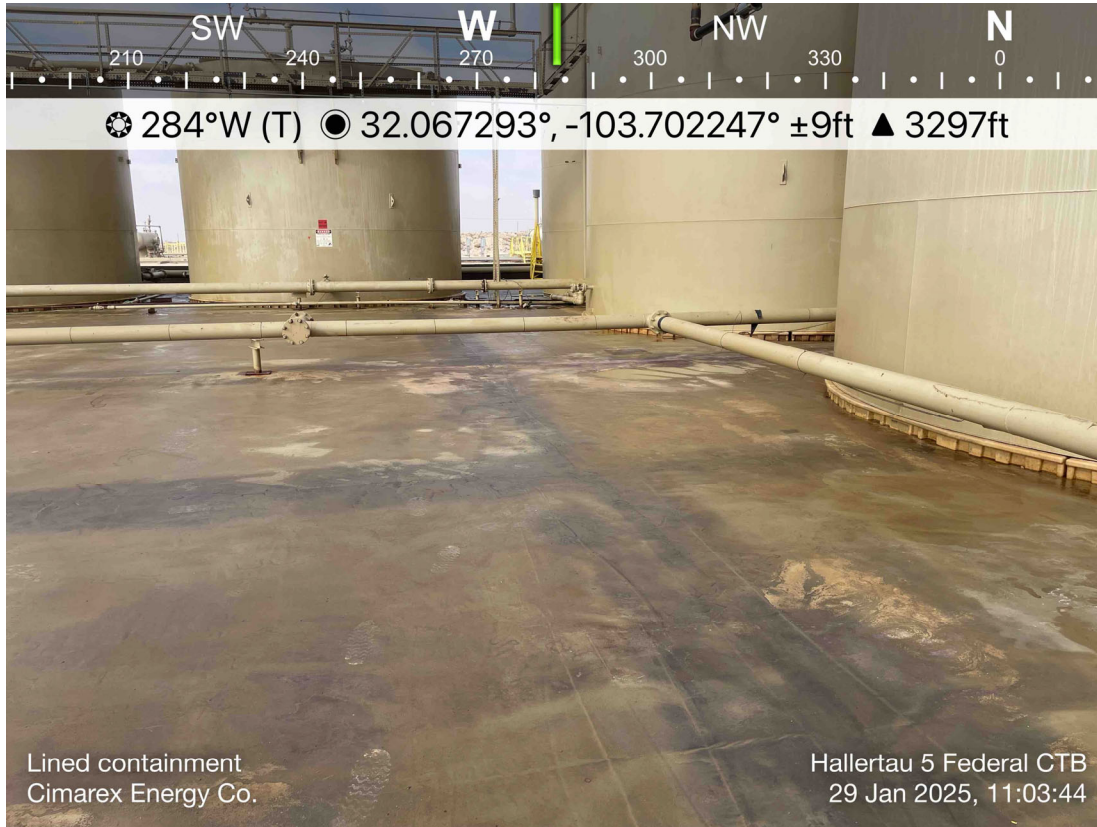


CIMAREX ENERGY
HALLERTAU 5 FED CTB
LEA, NM



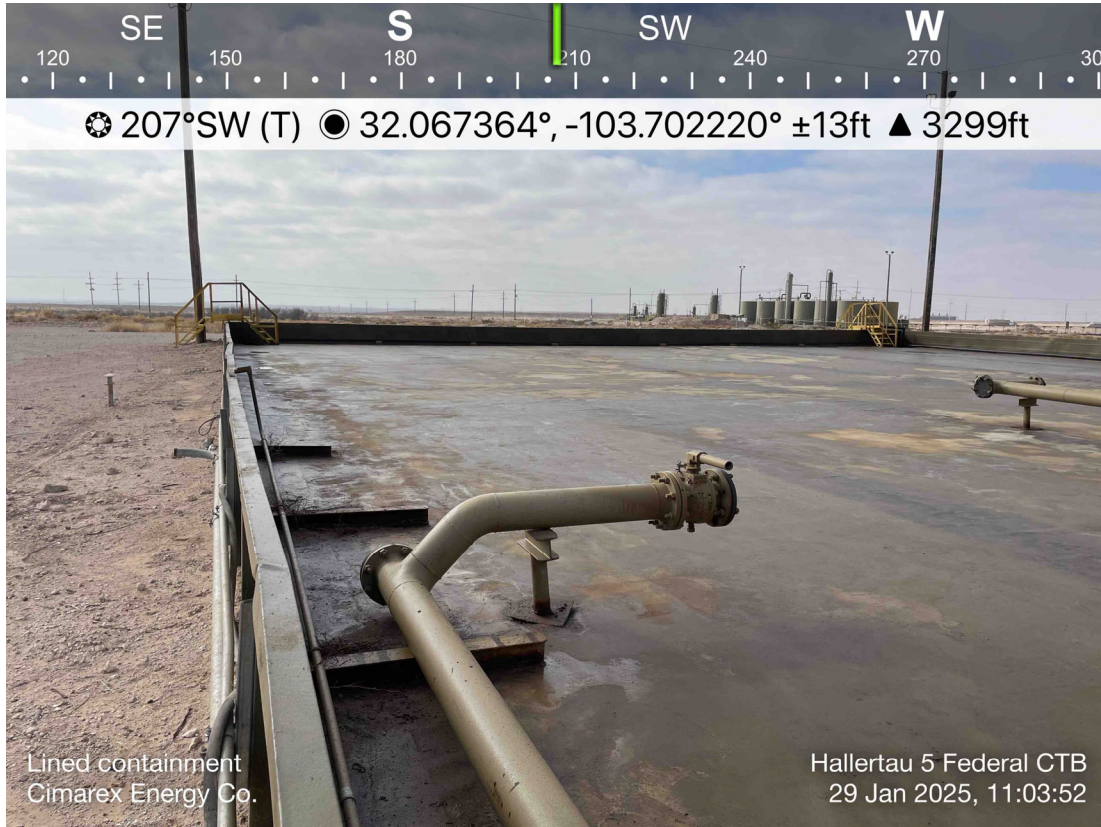


CIMAREX ENERGY
HALLERTAU 5 FED CTB
LEA, NM



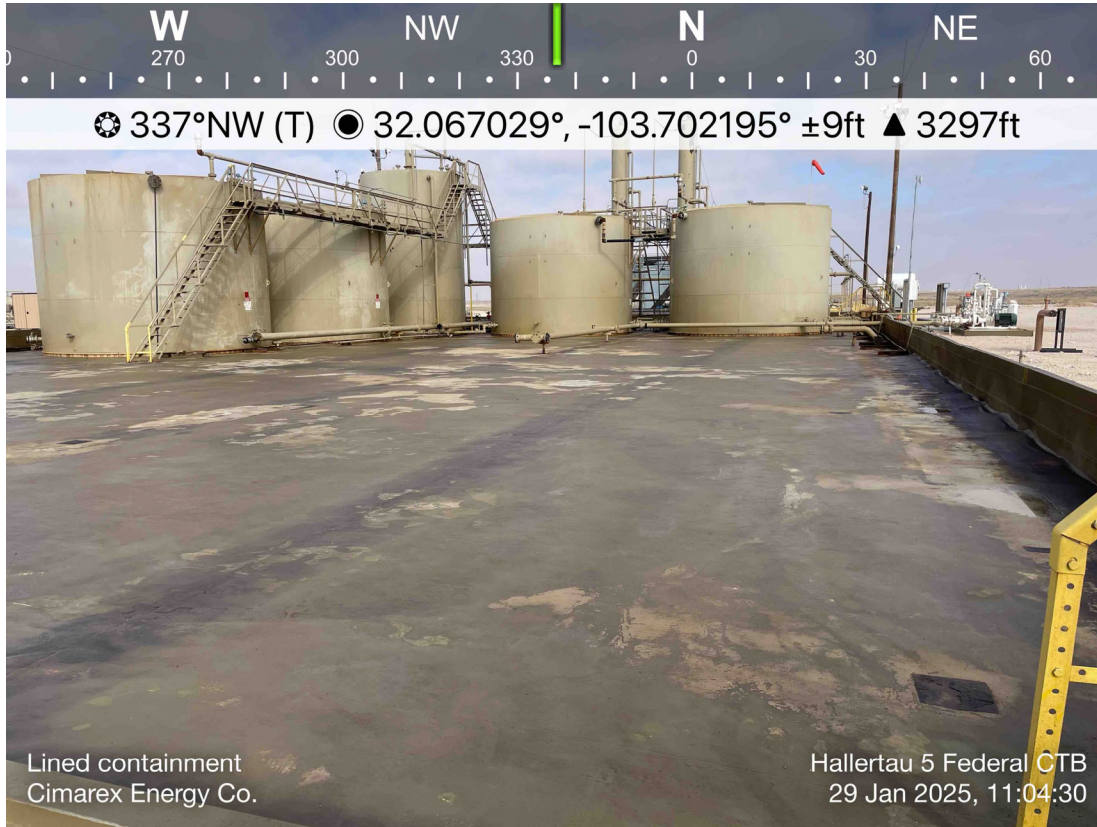


CIMAREX ENERGY
HALLERTAU 5 FED CTB
LEA, NM



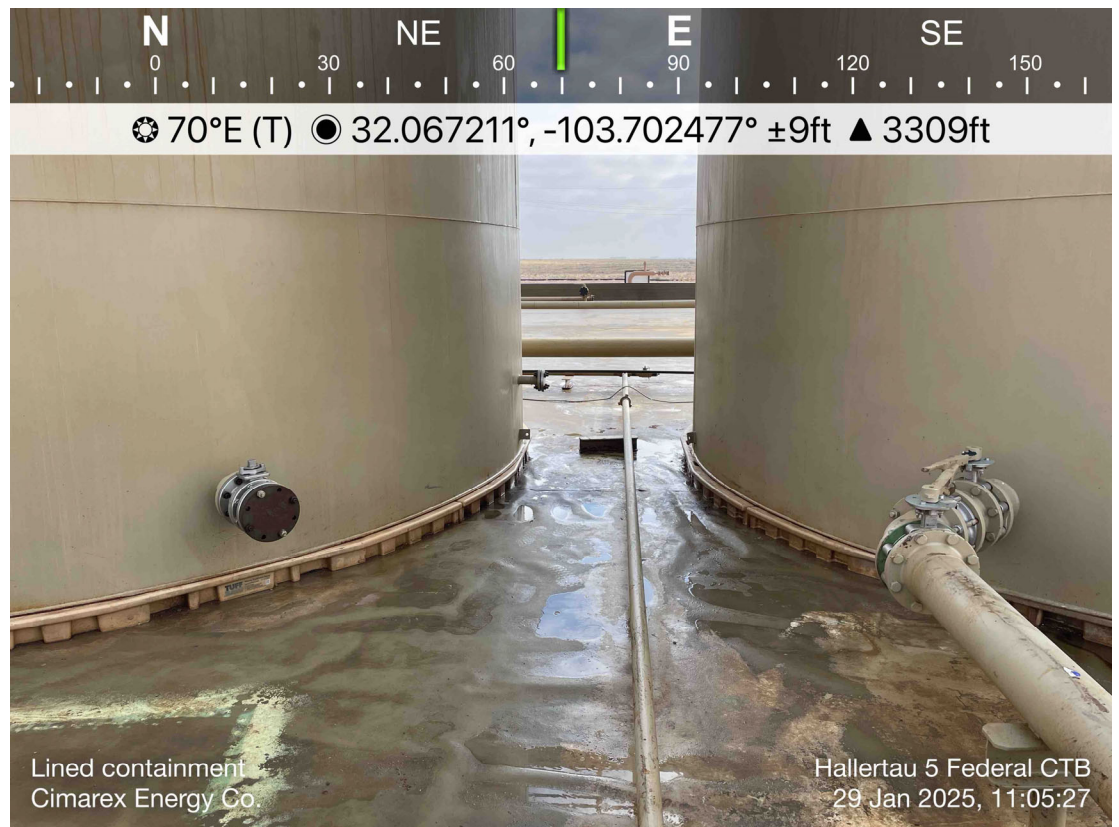


CIMAREX ENERGY
HALLERTAU 5 FED CTB
LEA, NM



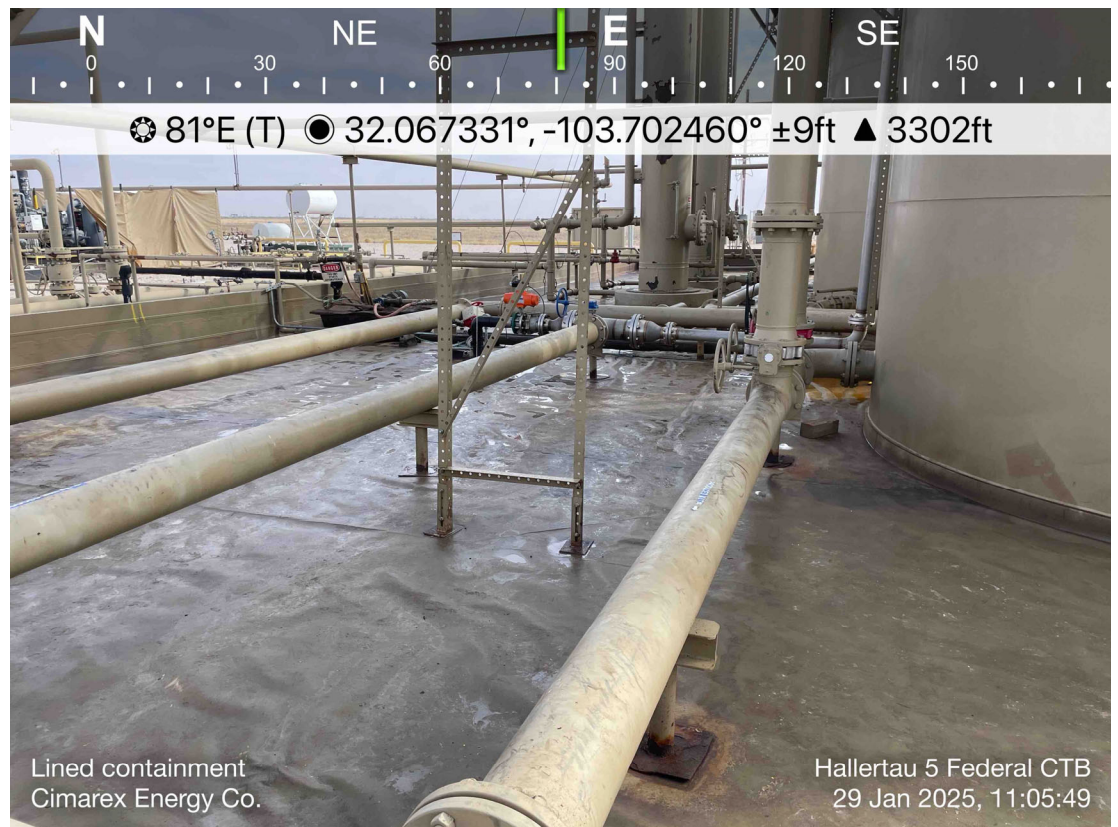
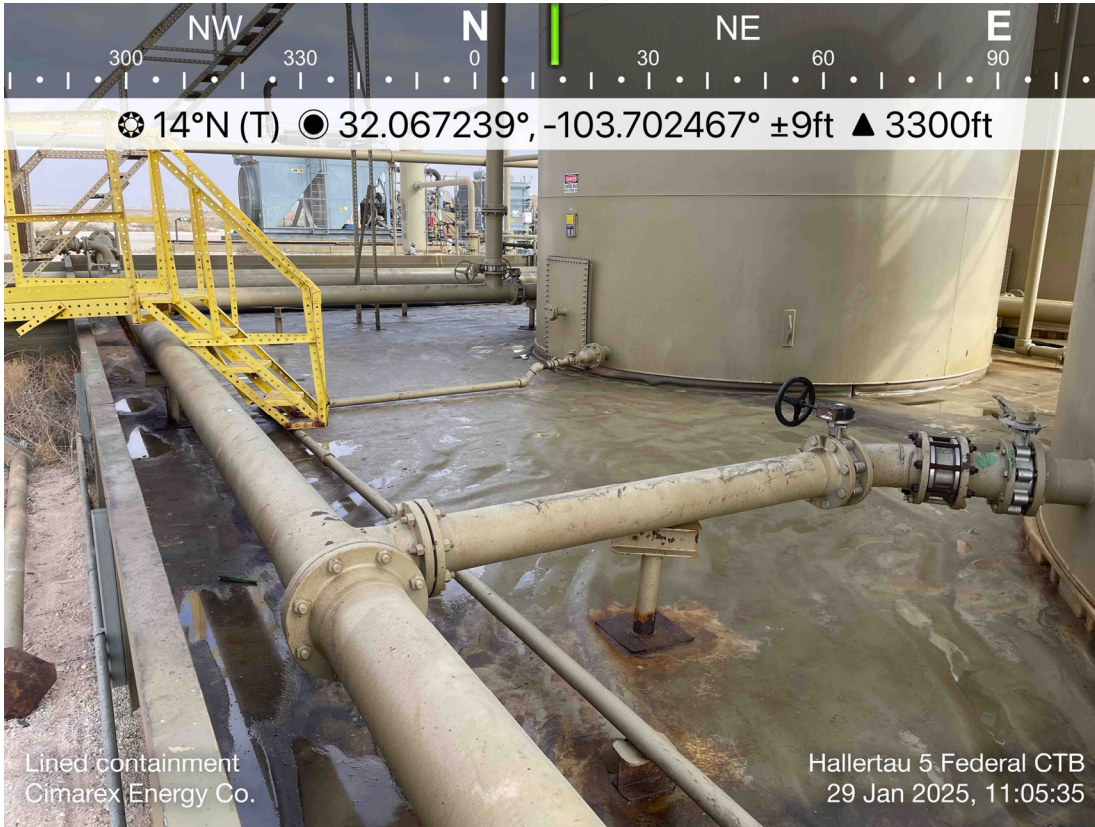


CIMAREX ENERGY
HALLERTAU 5 FED CTB
LEA, NM



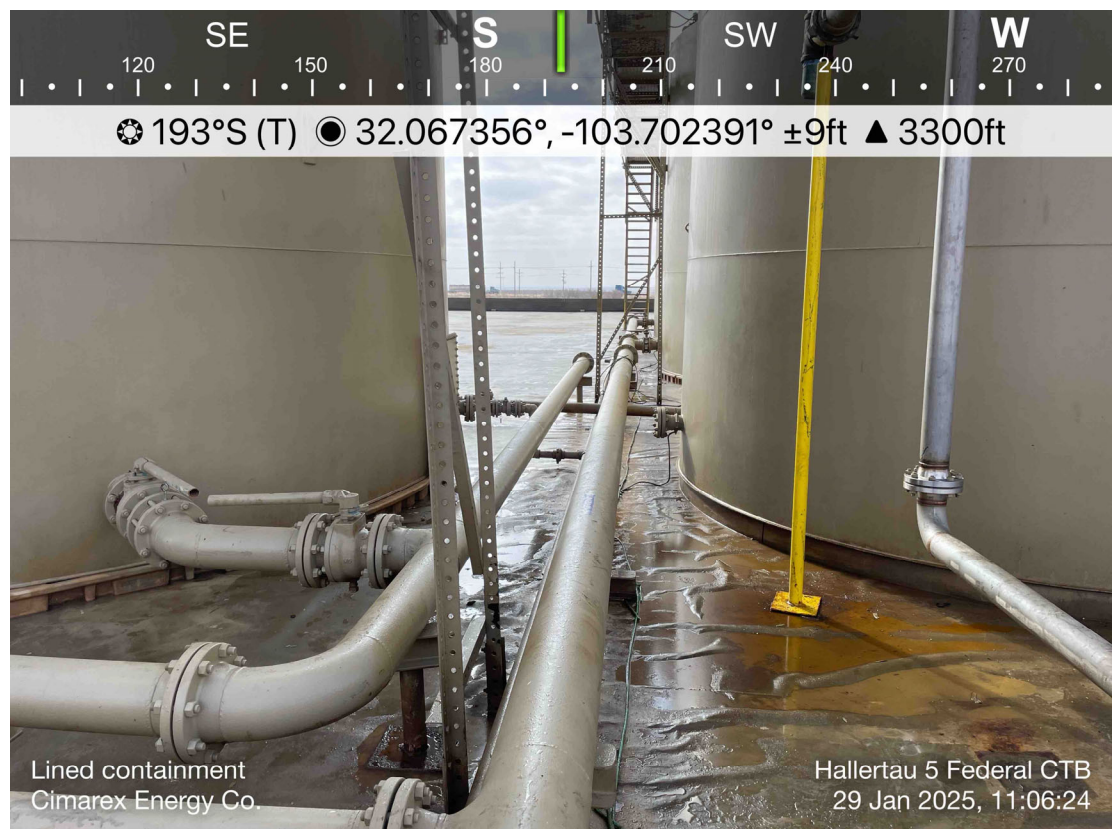
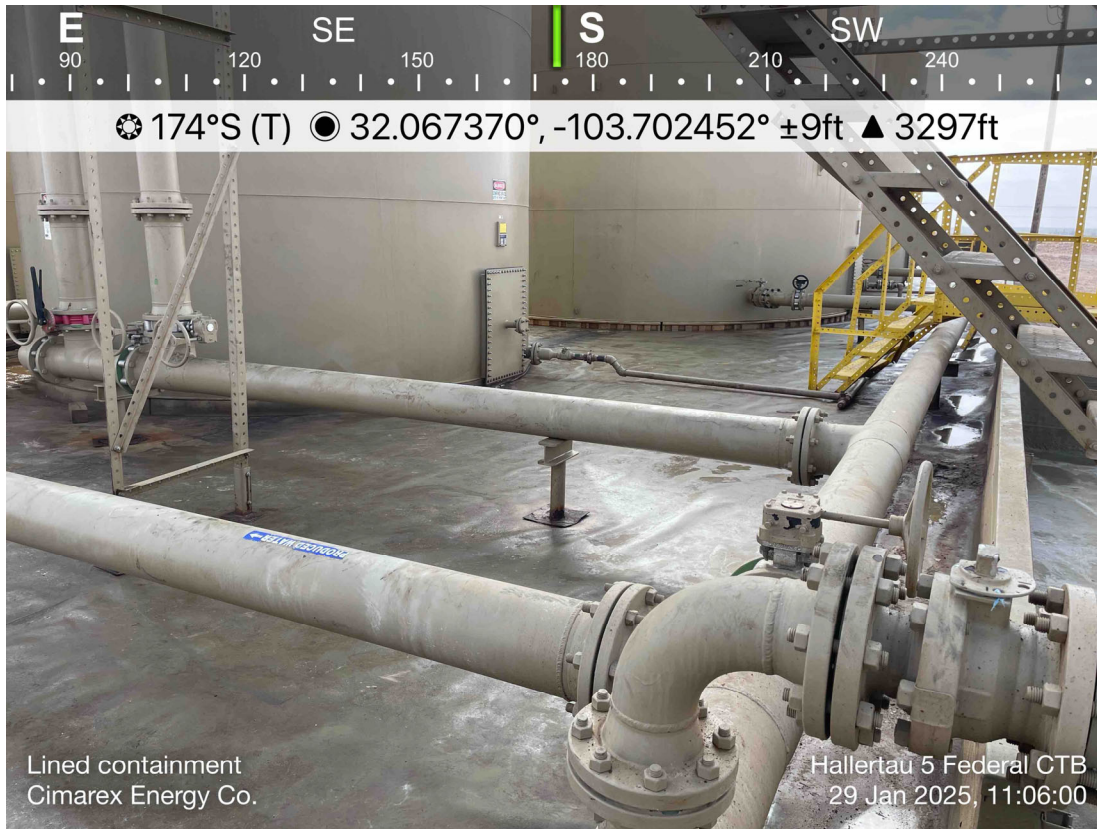


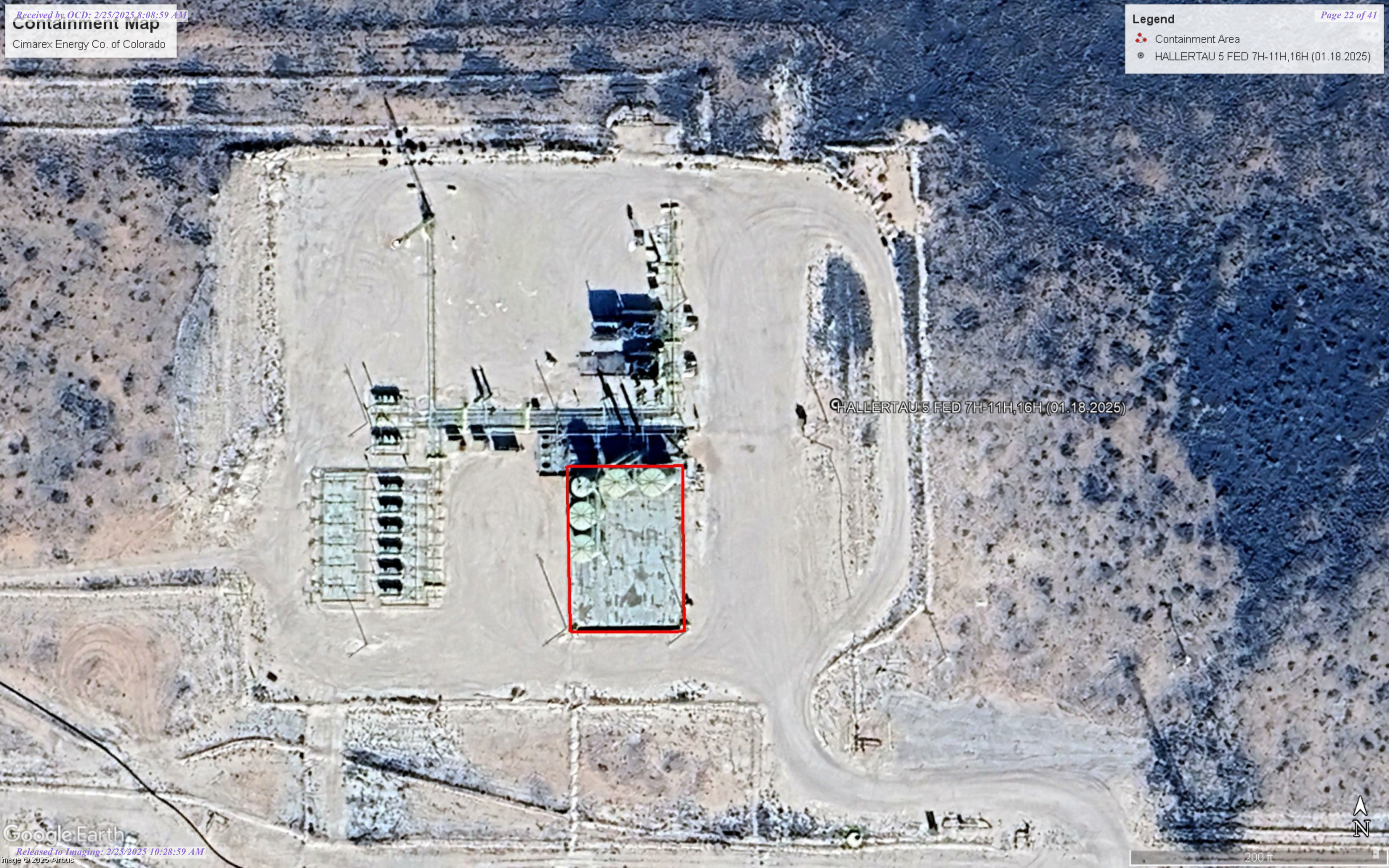
CIMAREX ENERGY
HALLERTAU 5 FED CTB
LEA, NM





CIMAREX ENERGY
HALLERTAU 5 FED CTB
LEA, NM





HALLERTAU 5 FED 7H-11H,16H (01.18.2025)

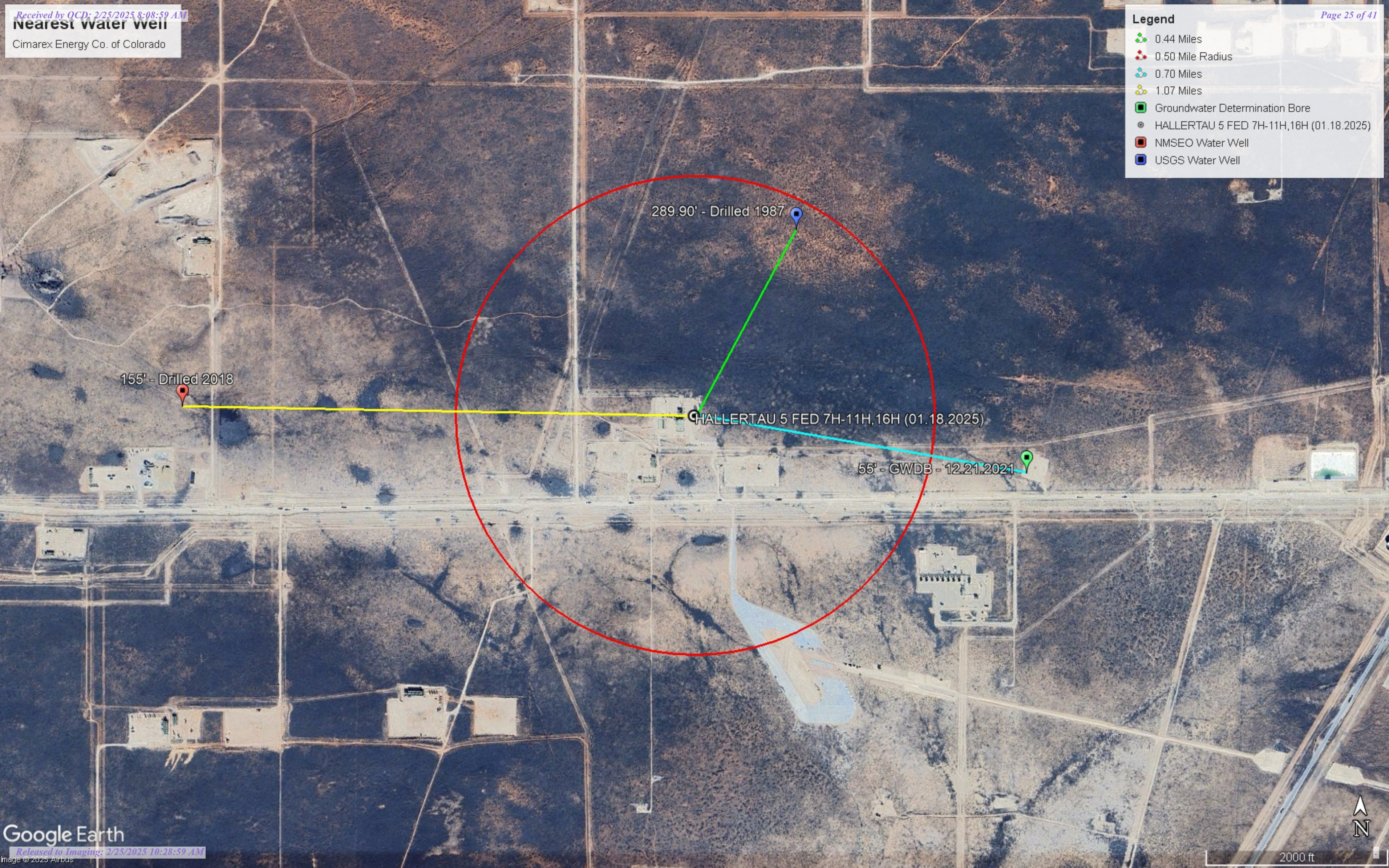


HALLERTAU 5 FED 7H-11H,16H (01.18.2025)



Legend

- 0.44 Miles
- 0.50 Mile Radius
- 0.70 Miles
- 1.07 Miles
- Groundwater Determination Bore
- HALLERTAU 5 FED 7H-11H,16H (01.18.2025)
- NMSEO Water Well
- USGS Water Well



Medium Karst

Cimarex Energy Co. of Colorado

Legend

- HALLERTAU 5 FED 7H-11H,16H (01.18.2025)
- Low
- Medium


HALLERTAU 5 FED 7H-11H,16H (01.18.2025)





Groundwater Determination Bore Figure

Cimarex Energy
Hallertau 5 Fed #4

Legend

 0.5 Mile Radius

 32.06508, -103.68667 Cimarex Hallertau 5 Fed #4

 GWDB





New Mexico Office of the State Engineer

Water Column/Average Depth to Water

(A CLW##### in the POD suffix indicates the POD has been replaced & no longer serves as a water right file.)

(R=POD has been replaced, O=orphaned, C=the file is closed)

(quarters are smallest to largest)

(meters)

(In feet)

POD Number	Code	Sub basin	County	Q64	Q16	Q4	Sec	Tws	Range	X	Y	Map	Distance	Well Depth	Depth Water	Water Column
C 04209 POD1		CUB	LE	NE	SW	SW	06	26S	32E	620902.7	3548619.8		1634	360	155	205
C 04209 POD2		C	LE	NE	SW	SW	06	26S	32E	620817.8	3548657.3		1718	340	155	185
C 03829 POD1		CUB	LE	SW	SW	NW	06	26S	32E	620628.5	3549186.3		1982	646	350	296
C 03554 POD1		CUB	ED	NE	NW	SE	01	26S	31E	620547.4	3549148.7		2051	630	300	330
C 03554 POD2		CUB	ED	NE	NE	SE	01	26S	31E	620527.2	3549105.0		2060	650	355	295
C 02090		C	ED		SE	SE	01	26S	31E	620329.0	3548533.0 *		2210	350	335	15
C 04256 POD1		C	ED	SE	SE	NE	01	26S	31E	620383.8	3549257.3		2237	666	340	326
C 03639 POD1		CUB	ED	SW	SE	NE	01	26S	31E	620168.2	3549279.7		2451	700	365	335
C 04801 POD1		C	ED	NW	NE	SE	13	26S	31E	620283.6	3545858.5		3585	280	225	55
C 04722 POD1		CUB	LE	SW	SW	NE	29	25S	32E	622962.1	3552530.5		3905			

Average Depth to Water: **286 feet**

Minimum Depth: **155 feet**

Maximum Depth: **365 feet**

Record Count: 10

UTM Filters (in meters):

Easting: 622536.70
Northing: 3548648.05
Radius: 4000

* UTM location was derived from PLSS - see Help

The data is furnished by the NMOSE/ISC and is accepted by the recipient with the expressed understanding that the OSE/ISC make no warranties, expressed or implied, concerning the accuracy, completeness, reliability, usability, or suitability for any particular purpose of the data.



USGS Home
Contact USGS
Search USGS

National Water Information System: Web Interface

USGS Water Resources

Data Category:
Groundwater

Geographic Area:
New Mexico

GO

Click to hideNews Bulletins

- Explore the *NEW* [USGS National Water Dashboard](#) interactive map to access real-time water data from over 13,500 stations nationwide.

Groundwater levels for New Mexico

Click to hide state-specific text

Important: [Next Generation Monitoring Location Page](#)

Search Results -- 1 sites found

Agency code = usgs
site_no list =

- 320425103415401

Minimum number of levels = 1
[Save file of selected sites](#) to local disk for future upload

USGS 320425103415401 26S.31E.01.42110

Eddy County, New Mexico
Latitude 32°04'25", Longitude 103°41'54" NAD27
Land-surface elevation 3,295 feet above NAVD88
The depth of the well is 340 feet below land surface.
This well is completed in the Other aquifers (N9999OTHER) national aquifer.
This well is completed in the Rustler Formation (312RSLR) local aquifer.

Output formats

Table of data
Tab-separated data
Graph of data
Reselect period

Date	Time	? Water-level date-time accuracy	? Parameter code	Water level, feet below land surface	Water level, feet above specific vertical datum	Referenced vertical datum	? Status	? Method of measurement	? Measuring agency	? Source of measurement	? Water level approval status
1949-03-10			D	62610	3005.67	NGVD29	1	Z			
1949-03-10			D	62611	3007.30	NAVD88	1	Z			
1949-03-10			D	72019	287.70		1	Z			

Explanation

Section	Code	Description
Water-level date-time accuracy	D	Date is accurate to the Day
Parameter code	62610	Groundwater level above NGVD 1929, feet
Parameter code	62611	Groundwater level above NAVD 1988, feet
Parameter code	72019	Depth to water level, feet below land surface
Referenced vertical datum	NAVD88	North American Vertical Datum of 1988
Referenced vertical datum	NGVD29	National Geodetic Vertical Datum of 1929
Status	1	Static
Method of measurement	Z	Other.
Measuring agency		Not determined
Source of measurement		Not determined
Water-level approval status	A	Approved for publication -- Processing and review completed.

[Questions or Comments](#)
[Help](#)

[Data Tips](#)
[Explanation of terms](#)
[Subscribe for system changes](#)

[Accessibility](#) [FOIA](#) [Privacy](#) [Policies and Notices](#)

[U.S. Department of the Interior](#) | [U.S. Geological Survey](#)

Title: Groundwater for New Mexico: Water Levels

URL: <https://nwis.waterdata.usgs.gov/nm/nwis/gwlevels?>



Page Contact Information: [New Mexico Water Data Maintainer](#)

Page Last Modified: 2025-02-25 09:31:02 EST

0.33 0.25 nadww01



Borehole ID: GWDB

Soil Drilling Log

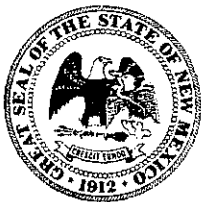
Project Name : Hallertau 5 Fed #4
Project No. : 212C-MD-02564
Location : Lea County, New Mexico
Coordinates : 32.0656322, -103.6901477
Elevation : N/A

Date : Tuesday, December 21, 2021
Sampler : Zeke Moreno
Driller : Scarborough Drilling
Method : Air Rotary

Depth (ft.)	WL	Soil Description	Chloride Field Test (ppm)	Field Titration Test (ppm)	Depth (ft.)	WL	Soil Description	Chloride Field Test (ppm)	Field Titration Test (ppm)
0		CALICHE, some sand, coarse, light tan to white, dry, no odor, no staining.	150ppm		50		fine SAND, well sorted, rounded, light tan, no moisture, no odor, no staining.		
		SAND with caliche, well sorted, well rounded, light tan, no moisture, no odor, no staining.	112ppm						
		"	72ppm		55		"		
5		fine SAND with some caliche (<20%), light tan, well sorted, well rounded, no moisture, no odor, no staining	41ppm						
			73ppm						
10		fine SAND, well sorted, rounded, light tan, no moisture, no odor, no staining.	44ppm		60		Total Depth = 55'		
15		"			65				
20		"			70				
25		"			75				
30		fine SAND with some caliche pockets, well sorted and rounded sand grains, light tan, dry, no odor, no staining.			80				
35		fine SAND, well sorted, rounded, light tan, no moisture, no odor, no staining.			85				
40		"			90				
45		"			95				
50					100				

* H.O. = Heavy Odor
 * H.S. = Heavy Staining

* L.O. = Low Odor
 * L.S. = Low Staining



WELL RECORD & LOG

OFFICE OF THE STATE ENGINEER

www.ose.state.nm.us

1. GENERAL AND WELL LOCATION	OSE POD NO. (WELL NO.) C-4209-POD2		WELL TAG ID NO.		OSE FILE NO(S)		
	WELL OWNER NAME(S) Baker Ranch				PHONE (OPTIONAL)		
	WELL OWNER MAILING ADDRESS P.O. Box 24				CITY Silver City	STATE NM	
					ZIP 88062		
WELL LOCATION (FROM GPS)	DEGREES 32		MINUTES 04	SECONDS 3.747	N		
	LONGITUDE 103		43	12.021	W		
* ACCURACY REQUIRED: ONE TENTH OF A SECOND * DATUM REQUIRED: WGS 84							
DESCRIPTION RELATING WELL LOCATION TO STREET ADDRESS AND COMMON LANDMARKS - PLSS (SECTION, TOWNSHIP, RANGE) WHERE AVAILABLE							
2. DRILLING & CASING INFORMATION	LICENSE NO. WD1706		NAME OF LICENSED DRILLER Bryce Wallace		NAME OF WELL DRILLING COMPANY Elite Drillers Corporation		
	DRILLING STARTED 5/7/18	DRILLING ENDED 5/9/18	DEPTH OF COMPLETED WELL (FT) 340	BORE HOLE DEPTH (FT) 340	DEPTH WATER FIRST ENCOUNTERED (FT) 155		
	COMPLETED WELL IS: <input type="checkbox"/> ARTESIAN <input type="checkbox"/> DRY HOLE <input checked="" type="checkbox"/> SHALLOW (UNCONFINED)				STATIC WATER LEVEL IN COMPLETED WELL (FT) 155		
	DRILLING FLUID: <input type="checkbox"/> AIR <input checked="" type="checkbox"/> MUD ADDITIVES - SPECIFY:						
	DRILLING METHOD: <input checked="" type="checkbox"/> ROTARY <input type="checkbox"/> HAMMER <input type="checkbox"/> CABLE TOOL <input type="checkbox"/> OTHER - SPECIFY:						
	DEPTH (feet bgl)		BORE HOLE DIAM (inches)	CASING MATERIAL AND/OR GRADE (include each casing string, and note sections of screen)	CASING CONNECTION TYPE (add coupling diameter)	CASING INSIDE DIAM (inches)	CASING WALL THICKNESS (inches)
	FROM	TO					
	+2	200	11	PVC	Spline	6	SDR 21
	200	340	11	PVC	Spline	6	SDR 21
3. ANNULAR MATERIAL	DEPTH (feet bgl)		BORE HOLE DIAM. (inches)	LIST ANNULAR SEAL MATERIAL AND GRAVEL PACK SIZE-RANGE BY INTERVAL	AMOUNT (cubic feet)	METHOD OF PLACEMENT	
	FROM	TO					
	0	25	11	Portland I/II	25	Slurry/Pour	
	25	340	11	8/16 Silica Sand	140	Pour	

FOR OSE INTERNAL USE

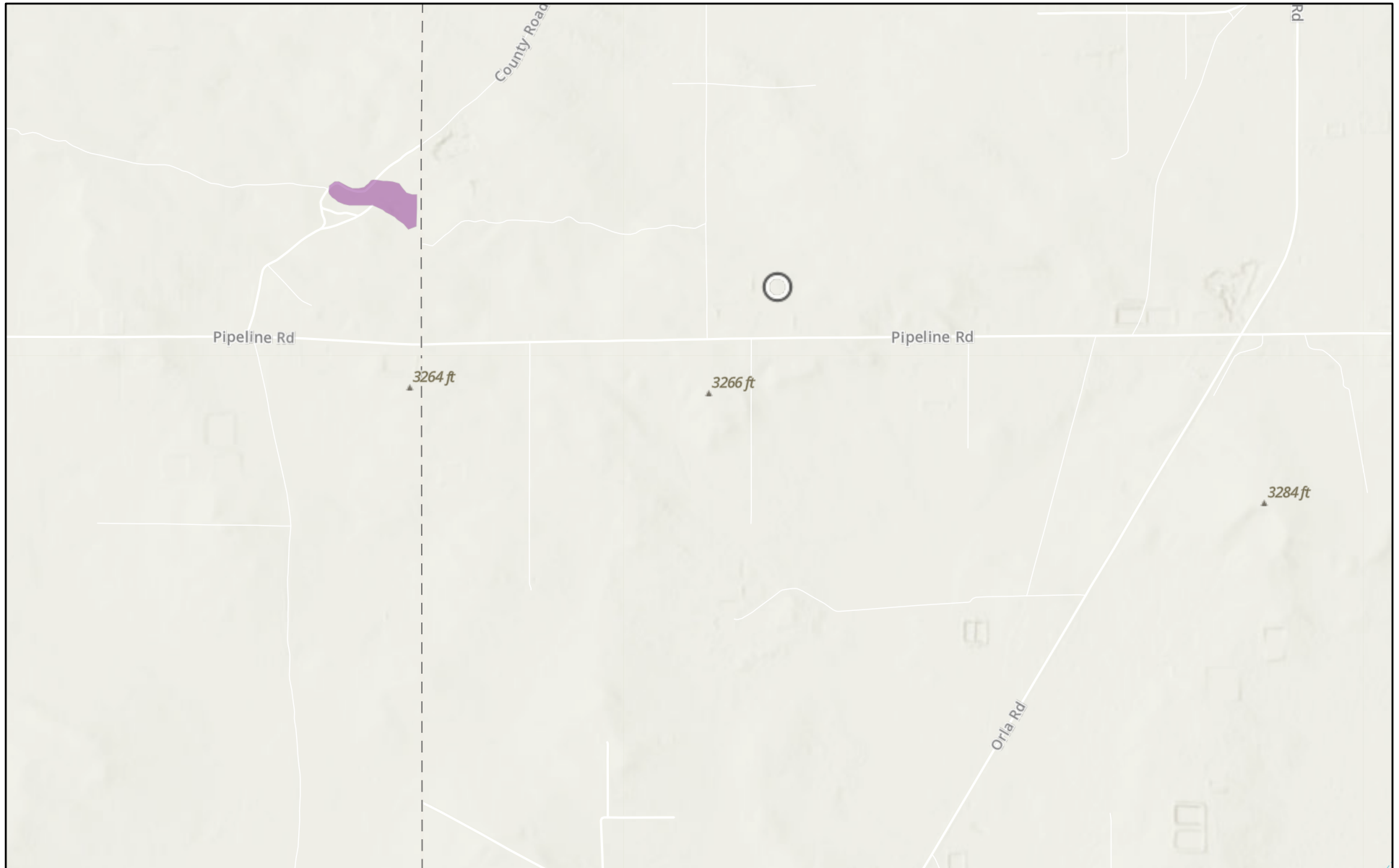
WR-20 WELL RECORD & LOG (Version 06/30/17)

FILE NO.	C-4209	POD NO.	2	TRN NO.	621334
LOCATION	26S.32E.6.3.3.2	WELL TAG ID NO.	EXPL	N/A	PAGE 1 OF 2

4. HYDROGEOLOGIC LOG OF WELL					
DEPTH (feet bgl)		THICKNESS (feet)	COLOR AND TYPE OF MATERIAL ENCOUNTERED - INCLUDE WATER-BEARING CAVITIES OR FRACTURE ZONES <i>(attach supplemental sheets to fully describe all units)</i>	WATER BEARING? (YES / NO)	ESTIMATED YIELD FOR WATER-BEARING ZONES (gpm)
FROM	TO				
0	10	10	Brown Sand	Y ✓ N	
10	18	8	Tan Caliche	Y ✓ N	
18	320	302	Red Sand	✓ Y N	5.00
320	340	20	Red Clay	Y ✓ N	
				Y N	
				Y N	
				Y N	
				Y N	
				Y N	
				Y N	
				Y N	
				Y N	
				Y N	
				Y N	
				Y N	
				Y N	
				Y N	
				Y N	
				Y N	
				Y N	
				Y N	
				Y N	
METHOD USED TO ESTIMATE YIELD OF WATER-BEARING STRATA: <input type="checkbox"/> PUMP <input checked="" type="checkbox"/> AIR LIFT <input type="checkbox"/> BAILER <input type="checkbox"/> OTHER - SPECIFY:				TOTAL ESTIMATED WELL YIELD (gpm): 5.00	
5. TEST; RIG SUPERVISION					
WELL TEST		TEST RESULTS - ATTACH A COPY OF DATA COLLECTED DURING WELL TESTING, INCLUDING DISCHARGE METHOD, START TIME, END TIME, AND A TABLE SHOWING DISCHARGE AND DRAWDOWN OVER THE TESTING PERIOD.			
MISCELLANEOUS INFORMATION:					
PRINT NAME(S) OF DRILL RIG SUPERVISOR(S) THAT PROVIDED ONSITE SUPERVISION OF WELL CONSTRUCTION OTHER THAN LICENSEE:					
6. SIGNATURE					
THE UNDERSIGNED HEREBY CERTIFIES THAT, TO THE BEST OF HIS OR HER KNOWLEDGE AND BELIEF, THE FOREGOING IS A TRUE AND CORRECT RECORD OF THE ABOVE DESCRIBED HOLE AND THAT HE OR SHE WILL FILE THIS WELL RECORD WITH THE STATE ENGINEER AND THE PERMIT HOLDER WITHIN 20 DAYS AFTER COMPLETION OF WELL DRILLING:					
		Digitally signed by Bryce Wallace Date: 2018.05.17 10:36:25 -05'00'		Bryce Wallace	
				5/17/18	
SIGNATURE OF DRILLER / PRINT SIGNED NAME				DATE	

FOR OSE INTERNAL USE		WR-20 WELL RECORD & LOG (Version 06/30/2017)	
FILE NO.	C-4209	POD NO.	2
LOCATION	26S.32E.6.3.3.2	WELL TAG ID NO.	N/A
		PAGE 2 OF 2	

HALLERTAU 5 FED 7H-11H,16H (01.18.2025)

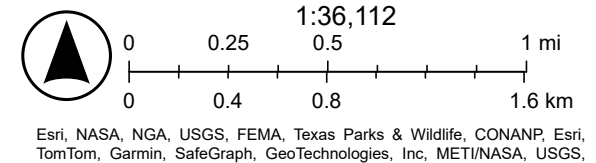


2/25/2025

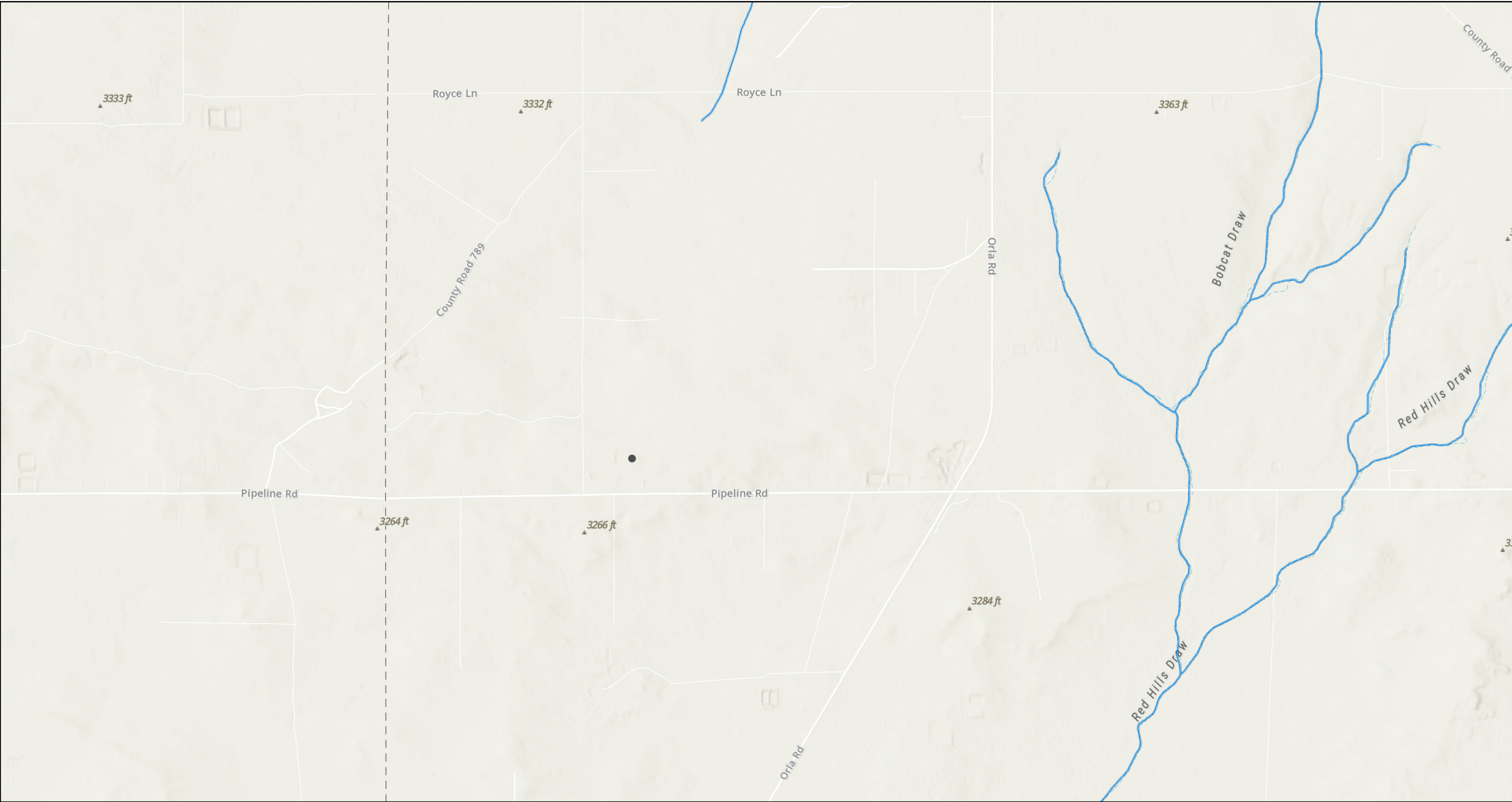
USA Flood Hazard Areas

 1% Annual Chance Flood Hazard

World Hillshade

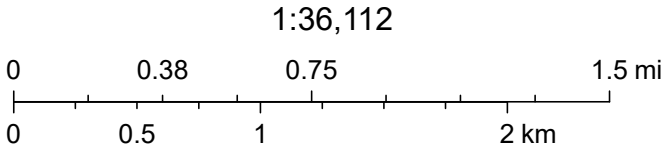


HALLERTAU 5 FED 7H-11H,16H (01.18.2025)



2/25/2025, 8:29:18 AM

OSE Streams



Esri, NASA, NGA, USGS, FEMA, Texas Parks & Wildlife, CONANP, Esri, TomTom, Garmin, SafeGraph, GeoTechnologies, Inc, METI/NASA, USGS, EPA, NPS, US Census Bureau, USDA, USFWS, NM OSE

Sante Fe Main Office
Phone: (505) 476-3441

General Information
Phone: (505) 629-6116

Online Phone Directory
<https://www.emnrd.nm.gov/ocd/contact-us>

State of New Mexico
Energy, Minerals and Natural Resources
Oil Conservation Division
1220 S. St Francis Dr.
Santa Fe, NM 87505

QUESTIONS

Action 434966

QUESTIONS

Operator: CIMAREX ENERGY CO. OF COLORADO 6001 Deauville Blvd Midland, TX 79706	OGRID: 162683
	Action Number: 434966
	Action Type: [C-141] Remediation Closure Request C-141 (C-141-v-Closure)

QUESTIONS

Prerequisites	
Incident ID (n#)	nAPP2501859534
Incident Name	NAPP2501859534 HALLERTAU 5 FED 7H-11H,16H @ 0
Incident Type	Oil Release
Incident Status	Remediation Closure Report Received
Incident Facility	[fAPP2126956613] Hallertau 5

Location of Release Source

Please answer all the questions in this group.

Site Name	HALLERTAU 5 FED 7H-11H,16H
Date Release Discovered	01/18/2025
Surface Owner	Federal

Incident Details

Please answer all the questions in this group.

Incident Type	Oil Release
Did this release result in a fire or is the result of a fire	No
Did this release result in any injuries	No
Has this release reached or does it have a reasonable probability of reaching a watercourse	No
Has this release endangered or does it have a reasonable probability of endangering public health	No
Has this release substantially damaged or will it substantially damage property or the environment	No
Is this release of a volume that is or may with reasonable probability be detrimental to fresh water	No

Nature and Volume of Release

Material(s) released, please answer all that apply below. Any calculations or specific justifications for the volumes provided should be attached to the follow-up C-141 submission.

Crude Oil Released (bbls) Details	Cause: Equipment Failure Tank (Any) Crude Oil Released: 46 BBL Recovered: 46 BBL Lost: 0 BBL.
Produced Water Released (bbls) Details	Not answered.
Is the concentration of chloride in the produced water >10,000 mg/l	No
Condensate Released (bbls) Details	Not answered.
Natural Gas Vented (Mcf) Details	Not answered.
Natural Gas Flared (Mcf) Details	Not answered.
Other Released Details	Not answered.
Are there additional details for the questions above (i.e. any answer containing Other, Specify, Unknown, and/or Fire, or any negative lost amounts)	The facility saw HLP on the 3rd party take-away system, causing the water transfer pump to shut down on pressure safety high. This caused the water tank levels to rise, which ESD all wells, as designed, with the exception of Hallertau 5 Federal 8H. As the 8H continued to flow, the tank levels continued to rise resulting in the release out of tank thief hatch. All fluids remained inside the lined containment and have been recovered by a vac truck. The containment will be washed and a liner inspection will be scheduled in the coming days.

Sante Fe Main Office
Phone: (505) 476-3441

General Information
Phone: (505) 629-6116

Online Phone Directory
<https://www.emnrd.nm.gov/ocd/contact-us>

State of New Mexico
Energy, Minerals and Natural Resources
Oil Conservation Division
1220 S. St Francis Dr.
Santa Fe, NM 87505

QUESTIONS, Page 2

Action 434966

QUESTIONS (continued)

Operator: CIMAREX ENERGY CO. OF COLORADO 6001 Deauville Blvd Midland, TX 79706	OGRID: 162683
	Action Number: 434966
	Action Type: [C-141] Remediation Closure Request C-141 (C-141-v-Closure)

QUESTIONS

Nature and Volume of Release (continued)	
Is this a gas only submission (i.e. only significant Mcf values reported)	No, according to supplied volumes this does not appear to be a "gas only" report.
Was this a major release as defined by Subsection A of 19.15.29.7 NMAC	Yes
Reasons why this would be considered a submission for a notification of a major release	From paragraph A. "Major release" determine using: (1) an unauthorized release of a volume, excluding gases, of 25 barrels or more.
With the implementation of the 19.15.27 NMAC (05/25/2021), venting and/or flaring of natural gas (i.e. gas only) are to be submitted on the C-129 form.	

Initial Response

The responsible party must undertake the following actions immediately unless they could create a safety hazard that would result in injury.

The source of the release has been stopped	True
The impacted area has been secured to protect human health and the environment	True
Released materials have been contained via the use of berms or dikes, absorbent pads, or other containment devices	True
All free liquids and recoverable materials have been removed and managed appropriately	True
If all the actions described above have not been undertaken, explain why	Not answered.

Per Paragraph (4) of Subsection B of 19.15.29.8 NMAC the responsible party may commence remediation immediately after discovery of a release. If remediation has begun, please prepare and attach a narrative of actions to date in the follow-up C-141 submission. If remedial efforts have been successfully completed or if the release occurred within a lined containment area (see Subparagraph (a) of Paragraph (5) of Subsection A of 19.15.29.11 NMAC), please prepare and attach all information needed for closure evaluation in the follow-up C-141 submission.

I hereby certify that the information given above is true and complete to the best of my knowledge and understand that pursuant to OCD rules and regulations all operators are required to report and/or file certain release notifications and perform corrective actions for releases which may endanger public health or the environment. The acceptance of a C-141 report by the OCD does not relieve the operator of liability should their operations have failed to adequately investigate and remediate contamination that pose a threat to groundwater, surface water, human health or the environment. In addition, OCD acceptance of a C-141 report does not relieve the operator of responsibility for compliance with any other federal, state, or local laws and/or regulations.

I hereby agree and sign off to the above statement	Name: Ashton Thielke Title: EHS Specialist Email: Ashton.Thielke@coterra.com Date: 02/25/2025
--	--

Sante Fe Main Office
Phone: (505) 476-3441

General Information
Phone: (505) 629-6116

Online Phone Directory
<https://www.emnrd.nm.gov/ocd/contact-us>

State of New Mexico
Energy, Minerals and Natural Resources
Oil Conservation Division
1220 S. St Francis Dr.
Santa Fe, NM 87505

QUESTIONS, Page 3

Action 434966

QUESTIONS (continued)

Operator: CIMAREX ENERGY CO. OF COLORADO 6001 Deauville Blvd Midland, TX 79706	OGRID: 162683
	Action Number: 434966
	Action Type: [C-141] Remediation Closure Request C-141 (C-141-v-Closure)

QUESTIONS

Site Characterization	
<i>Please answer all the questions in this group (only required when seeking remediation plan approval and beyond). This information must be provided to the appropriate district office no later than 90 days after the release discovery date.</i>	
What is the shallowest depth to groundwater beneath the area affected by the release in feet below ground surface (ft bgs)	Between 51 and 75 (ft.)
What method was used to determine the depth to ground water	Direct Measurement
Did this release impact groundwater or surface water	No
What is the minimum distance, between the closest lateral extents of the release and the following surface areas:	
A continuously flowing watercourse or any other significant watercourse	Greater than 5 (mi.)
Any lakebed, sinkhole, or playa lake (measured from the ordinary high-water mark)	Between 1 and 5 (mi.)
An occupied permanent residence, school, hospital, institution, or church	Between 1 and 5 (mi.)
A spring or a private domestic fresh water well used by less than five households for domestic or stock watering purposes	Between 1 and 5 (mi.)
Any other fresh water well or spring	Between 1 and 5 (mi.)
Incorporated municipal boundaries or a defined municipal fresh water well field	Greater than 5 (mi.)
A wetland	Between 1 and 5 (mi.)
A subsurface mine	Greater than 5 (mi.)
An (non-karst) unstable area	Greater than 5 (mi.)
Categorize the risk of this well / site being in a karst geology	Medium
A 100-year floodplain	Between 1 and 5 (mi.)
Did the release impact areas not on an exploration, development, production, or storage site	No

Remediation Plan	
<i>Please answer all the questions that apply or are indicated. This information must be provided to the appropriate district office no later than 90 days after the release discovery date.</i>	
Requesting a remediation plan approval with this submission	Yes
<i>Attach a comprehensive report demonstrating the lateral and vertical extents of soil contamination associated with the release have been determined, pursuant to 19.15.29.11 NMAC and 19.15.29.13 NMAC.</i>	
Have the lateral and vertical extents of contamination been fully delineated	Yes
Was this release entirely contained within a lined containment area	Yes
<i>Per Subsection B of 19.15.29.11 NMAC unless the site characterization report includes completed efforts at remediation, the report must include a proposed remediation plan in accordance with 19.15.29.12 NMAC, which includes the anticipated timelines for beginning and completing the remediation.</i>	
On what estimated date will the remediation commence	01/29/2025
On what date will (or did) the final sampling or liner inspection occur	01/29/2025
On what date will (or was) the remediation complete(d)	01/29/2025
What is the estimated surface area (in square feet) that will be remediated	0
What is the estimated volume (in cubic yards) that will be remediated	0
<i>These estimated dates and measurements are recognized to be the best guess or calculation at the time of submission and may (be) change(d) over time as more remediation efforts are completed.</i>	
<i>The OCD recognizes that proposed remediation measures may have to be minimally adjusted in accordance with the physical realities encountered during remediation. If the responsible party has any need to significantly deviate from the remediation plan proposed, then it should consult with the division to determine if another remediation plan submission is required.</i>	

Sante Fe Main Office
Phone: (505) 476-3441

General Information
Phone: (505) 629-6116

Online Phone Directory
<https://www.emnrd.nm.gov/ocd/contact-us>

State of New Mexico
Energy, Minerals and Natural Resources
Oil Conservation Division
1220 S. St Francis Dr.
Santa Fe, NM 87505

QUESTIONS, Page 4

Action 434966

QUESTIONS (continued)

Operator: CIMAREX ENERGY CO. OF COLORADO 6001 Deauville Blvd Midland, TX 79706	OGRID: 162683
	Action Number: 434966
	Action Type: [C-141] Remediation Closure Request C-141 (C-141-v-Closure)

QUESTIONS

Remediation Plan (continued)	
<i>Please answer all the questions that apply or are indicated. This information must be provided to the appropriate district office no later than 90 days after the release discovery date.</i>	
This remediation will (or is expected to) utilize the following processes to remediate / reduce contaminants:	
<i>(Select all answers below that apply.)</i>	
Is (or was) there affected material present needing to be removed	Yes
Is (or was) there a power wash of the lined containment area (to be) performed	Yes
OTHER (Non-listed remedial process)	Not answered.
<i>Per Subsection B of 19.15.29.11 NMAC unless the site characterization report includes completed efforts at remediation, the report must include a proposed remediation plan in accordance with 19.15.29.12 NMAC, which includes the anticipated timelines for beginning and completing the remediation.</i>	
I hereby certify that the information given above is true and complete to the best of my knowledge and understand that pursuant to OCD rules and regulations all operators are required to report and/or file certain release notifications and perform corrective actions for releases which may endanger public health or the environment. The acceptance of a C-141 report by the OCD does not relieve the operator of liability should their operations have failed to adequately investigate and remediate contamination that pose a threat to groundwater, surface water, human health or the environment. In addition, OCD acceptance of a C-141 report does not relieve the operator of responsibility for compliance with any other federal, state, or local laws and/or regulations.	
I hereby agree and sign off to the above statement	Name: Ashton Thielke Title: EHS Specialist Email: Ashton.Thielke@coterra.com Date: 02/25/2025
<i>The OCD recognizes that proposed remediation measures may have to be minimally adjusted in accordance with the physical realities encountered during remediation. If the responsible party has any need to significantly deviate from the remediation plan proposed, then it should consult with the division to determine if another remediation plan submission is required.</i>	

Sante Fe Main Office
Phone: (505) 476-3441

General Information
Phone: (505) 629-6116

Online Phone Directory
<https://www.emnrd.nm.gov/ocd/contact-us>

State of New Mexico
Energy, Minerals and Natural Resources
Oil Conservation Division
1220 S. St Francis Dr.
Santa Fe, NM 87505

QUESTIONS, Page 6

Action 434966

QUESTIONS (continued)

Operator: CIMAREX ENERGY CO. OF COLORADO 6001 Deauville Blvd Midland, TX 79706	OGRID: 162683
	Action Number: 434966
	Action Type: [C-141] Remediation Closure Request C-141 (C-141-v-Closure)

QUESTIONS

Liner Inspection Information	
Last liner inspection notification (C-141L) recorded	424620
Liner inspection date pursuant to Subparagraph (a) of Paragraph (5) of Subsection A of 19.15.29.11 NMAC	01/29/2025
Was all the impacted materials removed from the liner	Yes
What was the liner inspection surface area in square feet	10670

Remediation Closure Request

Only answer the questions in this group if seeking remediation closure for this release because all remediation steps have been completed.

Requesting a remediation closure approval with this submission	Yes
Have the lateral and vertical extents of contamination been fully delineated	Yes
Was this release entirely contained within a lined containment area	Yes
What was the total surface area (in square feet) remediated	0
What was the total volume (cubic yards) remediated	0
Summarize any additional remediation activities not included by answers (above)	The spill was contained in the lined containment area. It was powerwashed and then inspected.

The responsible party must attach information demonstrating they have complied with all applicable closure requirements and any conditions or directives of the OCD. This demonstration should be in the form of a comprehensive report (in .pdf format) including a scaled site map, sampling diagrams, relevant field notes, photographs of any excavation prior to backfilling, laboratory data including chain of custody documents of final sampling, and a narrative of the remedial activities. Refer to 19.15.29.12 NMAC.

I hereby certify that the information given above is true and complete to the best of my knowledge and understand that pursuant to OCD rules and regulations all operators are required to report and/or file certain release notifications and perform corrective actions for releases which may endanger public health or the environment. The acceptance of a C-141 report by the OCD does not relieve the operator of liability should their operations have failed to adequately investigate and remediate contamination that pose a threat to groundwater, surface water, human health or the environment. In addition, OCD acceptance of a C-141 report does not relieve the operator of responsibility for compliance with any other federal, state, or local laws and/or regulations. The responsible party acknowledges they must substantially restore, reclaim, and re-vegetate the impacted surface area to the conditions that existed prior to the release or their final land use in accordance with 19.15.29.13 NMAC including notification to the OCD when reclamation and re-vegetation are complete.

I hereby agree and sign off to the above statement	Name: Ashton Thielke Title: EHS Specialist Email: Ashton.Thielke@coterra.com Date: 02/25/2025
--	--

Sante Fe Main Office
Phone: (505) 476-3441

General Information
Phone: (505) 629-6116

Online Phone Directory
<https://www.emnrd.nm.gov/ocd/contact-us>

State of New Mexico
Energy, Minerals and Natural Resources
Oil Conservation Division
1220 S. St Francis Dr.
Santa Fe, NM 87505

CONDITIONS

Action 434966

CONDITIONS

Operator: CIMAREX ENERGY CO. OF COLORADO 6001 Deauville Blvd Midland, TX 79706	OGRID: 162683
	Action Number: 434966
	Action Type: [C-141] Remediation Closure Request C-141 (C-141-v-Closure)

CONDITIONS

Created By	Condition	Condition Date
rhamlet	We have received your Remediation Closure Report for Incident #NAPP2501859534 HALLERTAU 5 FED 7H-11H,16H, thank you. This Remediation Closure Report is approved.	2/25/2025