



C-141 - CO2 GAS RELEASE ONLY (No Liquids)
EVENT SUMMARY, VARIANCE REQUEST & CLOSURE REQUEST REPORT

Facility ID:	fJXK1520829861	Incident #:	nAPP2507943906
Facility Name:	South Hobbs CTB	Flare Date:	02/21/2025
Event Duration:	25 Minutes	MCF Flared:	130
Start Time:	10:45 AM	End Time:	11:10 AM
Cause:	Controlled gas release only, no liquids involved - Combusted in a flare to reduce emissions		
Method of Flared Gas Measurement:	Gas Flare Meter		

C-141 EVENT SUMMARY & VARIANCE REQUEST:

Oxy certifies that this C-141 is submitted solely as a CO2 gas release with no involvement, containment, or spillage of liquids during this reported flare event. With this C-141 Event Summary and Variance Request, Oxy is requesting a variance exemption from NMAC 19.15.29.11, NMAC 19.15.29.12 and NMAC 19.15.29.13, as there was no involvement, containment, or spillage of liquids or fluids from this flare event and there was no impact to or on the ground, a surface, a watercourse, or otherwise, and this event poses no reasonable probability or chance of endangering public health, the environment, or fresh water.

C-141 EVENT SUMMARY:

- I. This flaring event was a controlled release of gas only, no liquids involved - combusted in a flare to reduce emissions; due to an unavoidable process upset at the facility involving CO2 gas.
- II. The occurrence of this event was beyond OXY's control as Oxy cannot predict when the facility will have a process upset. While flaring is not OXY's preferred method of handling excess gas, as a result of sudden and unexpected equipment malfunctions, and it is a necessary step under these exceptional circumstances to maintain the integrity and safety of our operations, equipment and personnel. OXY took all possible measures to manage and reduce emissions to the greatest extent possible.
- III. The flaring event has ceased.
- IV. This flare event consists primarily of CO2 gas and includes a small number of hydrocarbons. This flaring event did not result in a fire or result of a fire and no injuries were sustained or reported.
- V. This flare event did not result in the release of any liquids or fluids that reached, or have the potential to reach, the ground, a surface, a watercourse, or any other area. It poses no reasonable probability or chance of endangering public health, the environment, or fresh water.
- VI. There was no liquid or fluid impact to the area since there were no liquid or fluid spills and/or physical remedial actions required for the soil, groundwater, surface water, or environment, in or around the flare area as nothing impacted or occurred on the ground.



C-141 - CO2 GAS RELEASE ONLY (No Liquids)
EVENT SUMMARY, VARIANCE REQUEST & CLOSURE REQUEST REPORT

- VII. The flare at this facility is not located within an incorporated municipal boundary or within 300 feet from an occupied permanent residence, school, hospital, institution or church in existence.
- VIII. No affected or remediated materials were removed from the facility or the area of the flare, as this is solely a CO2 gas release, and no physical remediation actions or otherwise were necessary or taken as there was no impact to or on the ground.
- IX. While flaring is not OXY's preferred method of handling excess gas, it is a necessary step under these exceptional circumstances to maintain the integrity and safety of our field personnel, operations and its facility equipment.

C-141 VARIANCE REQUEST:

- X. Per NMAC 19.15.29.11, After the responsible party has removed all free liquids and recoverable materials, the responsible party must assess soils both vertically and horizontally for potential environmental impacts from any major or minor release containing liquids.
- a) In accordance with NMAC 19.15.29.11 and 19.15.29.11 A (1-5), B & C, no liquids or fluids were released during this minor CO2 gas release event.
 - b) A site assessment and characterization report have been submitted with this report.
 - c) The depth to groundwater was determined by using NMOSE website, <https://www.ose.nm.gov/>.
- XI. Per NMAC 19.15.29.12:
- a) The responsible party must remediate all releases regardless of volume.
 - I. N/A – No physical remediation actions or otherwise were necessary or taken as this is a minor CO2 gas release only with no involvement, containment, or spillage of liquids or fluids during this event.
 - b) Remediation requirements.
 - I. N/A – No physical remediation actions or otherwise were necessary or taken as this is a minor CO2 gas release only with no involvement, containment, or spillage of liquids or fluids during this event.
 - II. N/A – No physical remediation actions or otherwise were necessary or taken as this is a minor CO2 gas release only with no involvement, containment, or spillage of liquids or fluids during this event.
 - c) Remediation Plan Requirements: The responsible party must take the following action for any major or minor release containing liquids.
 - I. (1-5) N/A – No physical remediation actions or otherwise were necessary or taken as this is a minor CO2 gas release only with no involvement, containment, or spillage of liquids or fluids during this event and no impact to or on the ground.



C-141 - CO2 GAS RELEASE ONLY (No Liquids)
EVENT SUMMARY, VARIANCE REQUEST & CLOSURE REQUEST REPORT

XII. Per NMAC 19.15.29.13, RESTORATION, RECLAMATION AND RE-VEGETATION:

- I. N/A – No restoration, reclamation and re-vegetation actions were necessary or taken as this is a CO2 gas release only and there was no impact to or on the ground, a surface, a watercourse, or any other area and Oxy is requesting a variance at this time.

- II. No physical remedial actions were necessary, taken or required as there was no impact to the ground or for the soil, groundwater, surface water, or environment, in or around the flare area as nothing occurred on the ground as there was no involvement, containment, or spillage of liquids or fluids during this flare event and Oxy is requesting a variance at this time.

Listed below are the volume calculations that were determined for this flare event:

	Information		Methodology
A.	Flare Volume:	130 MCF	Metered Gas Volume Field Personnel Reported**
B.	CO2 Percentage:	88.18%	Gas Analysis - Feb 2025*
C.	Hydrocarbon Percentage:	11.82%	100% - 88.18%
D.	Hydrocarbon Volume:	15.4 MCF	(11.82 mol%) /100 * 130 MCF
E.	CO2 Volume:	114.6 MCF	(88.18 mol%) /100 * 130 MCF

** Gas analysis sample is current and within one year from date of event. Please see mole % column on the gas fractional analysis table on the attached Gas Analysis to the C141 report*

***The metered volume is determined from a total flow meter in front of the flare which is then reported by operations.*



C-141 - CO2 GAS RELEASE ONLY (No LIQUIDS)
EVENT SUMMARY, VARIANCE REQUEST & CLOSURE REQUEST REPORT

C-141 CLOSURE REPORT REQUEST:

I hereby certify that the information given above is true and complete to the best of my knowledge and understand that pursuant to NMOCD rules and regulations, all operators are required to report and/or file certain release notifications and perform corrective actions for releases, when applicable. Oxy is requesting at this time, with the approval of this C-141 report, that the incident listed above is closed.

Signed By,

Shaina Rojas
Air Quality EOR
Environmental Specialist
Oxy USA, Inc.
Office: (432) 448-6693
Shaina_rojas@oxy.com

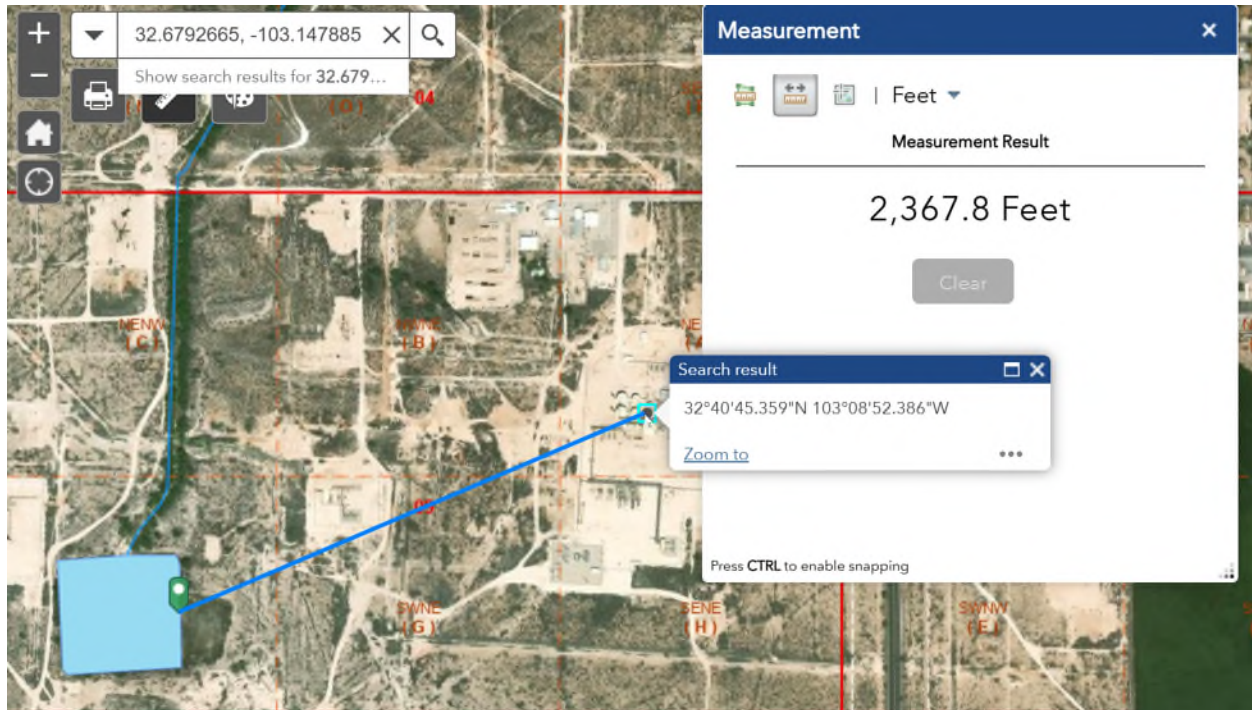
Listed below are the volume calculations that were determined for this flare event:

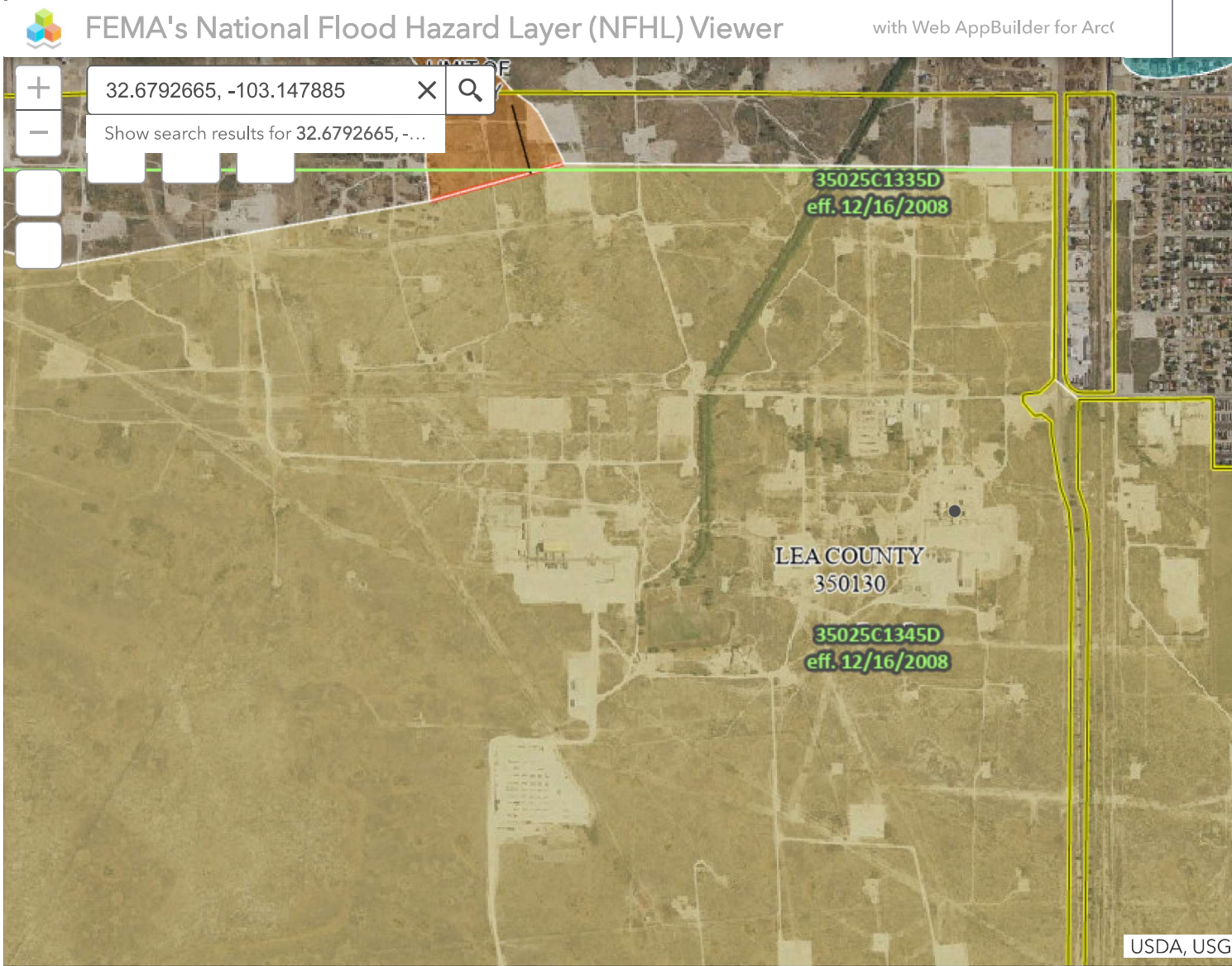
	Information		Methodology
A.	Flare Volume:	130 MCF	Metered Gas Volume Field Personnel Reported**
B.	CO2 Percentage:	88.18%	Gas Analysis - Feb 2025*
C.	Hydrocarbon Percentage:	11.82%	100% - 88.18%
D.	Hydrocarbon Volume:	15.4 MCF	$(11.82 \text{ mol\%}) / 100 * 130 \text{ MCF}$
E.	CO2 Volume:	114.6 MCF	$(88.18 \text{ mol\%}) / 100 * 130 \text{ MCF}$

** Gas analysis sample is current and within one year from date of event. Please see mole % column on the gas fractional analysis table on the attached Gas Analysis to the C141 report*

***The metered volume is determined from a total flow meter in front of the flare which is then reported by operations.*

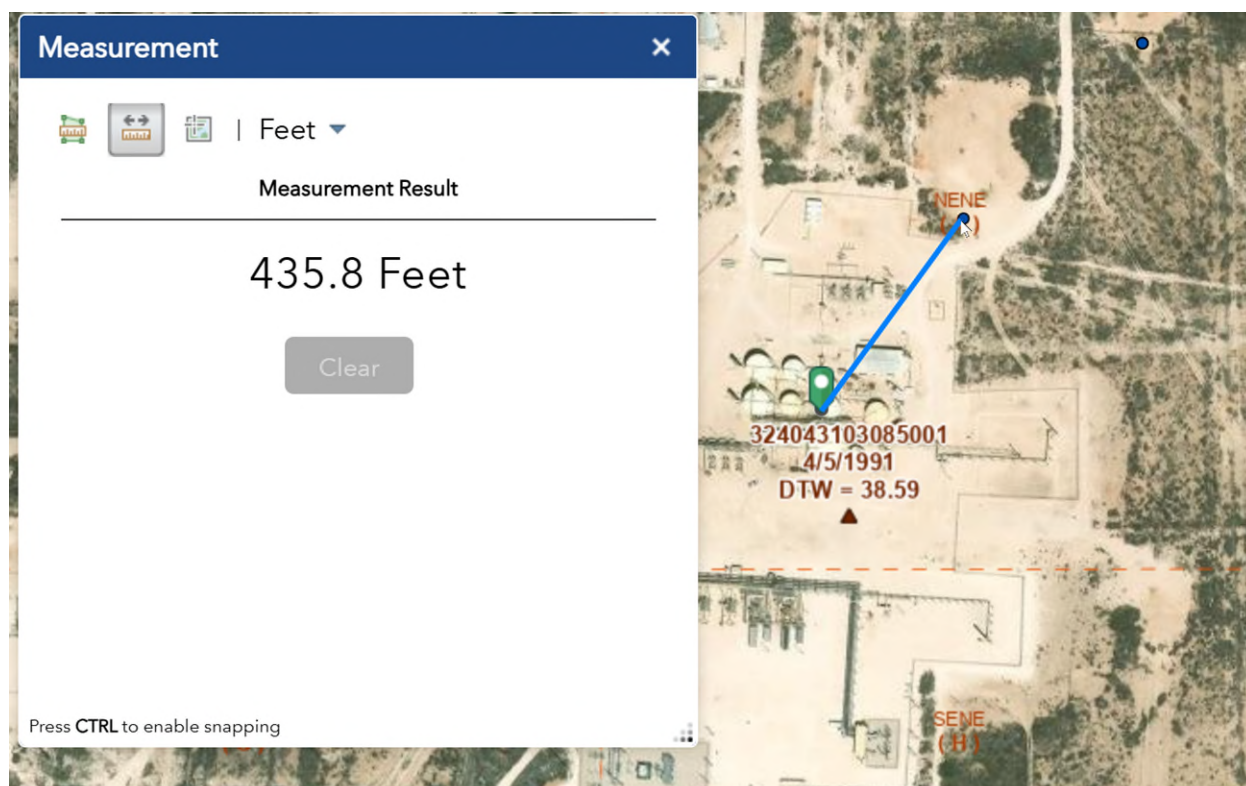
Significant Watercourse and pond: ~2367 feet to the west





0.3mi
-103.142 32.686 Degrees

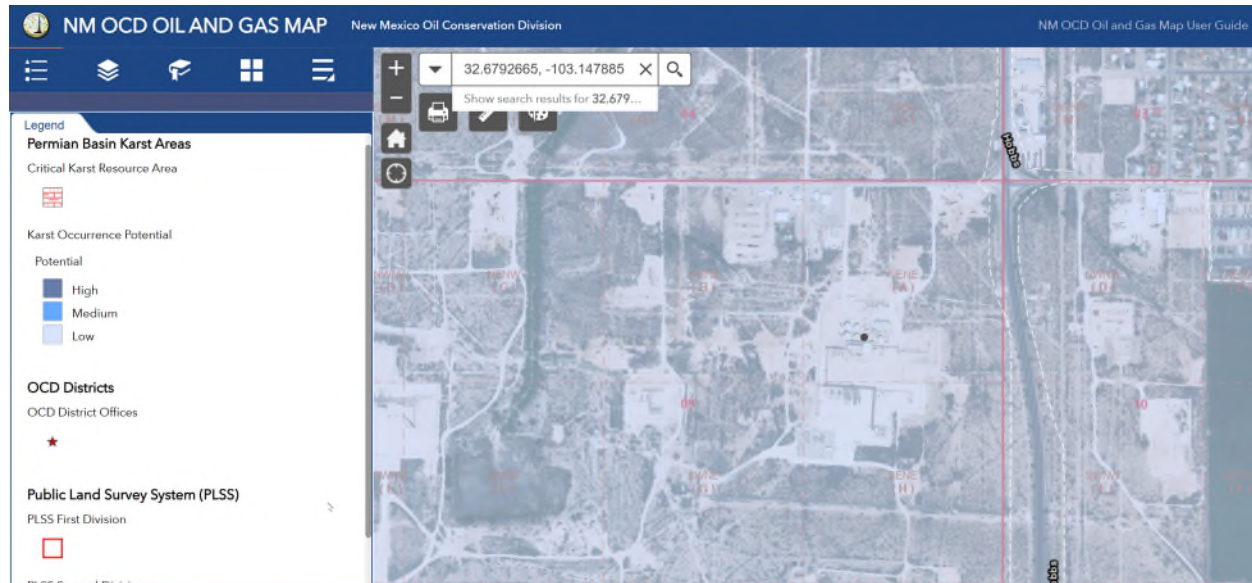
Fresh water well: Between 300 and 500 feet



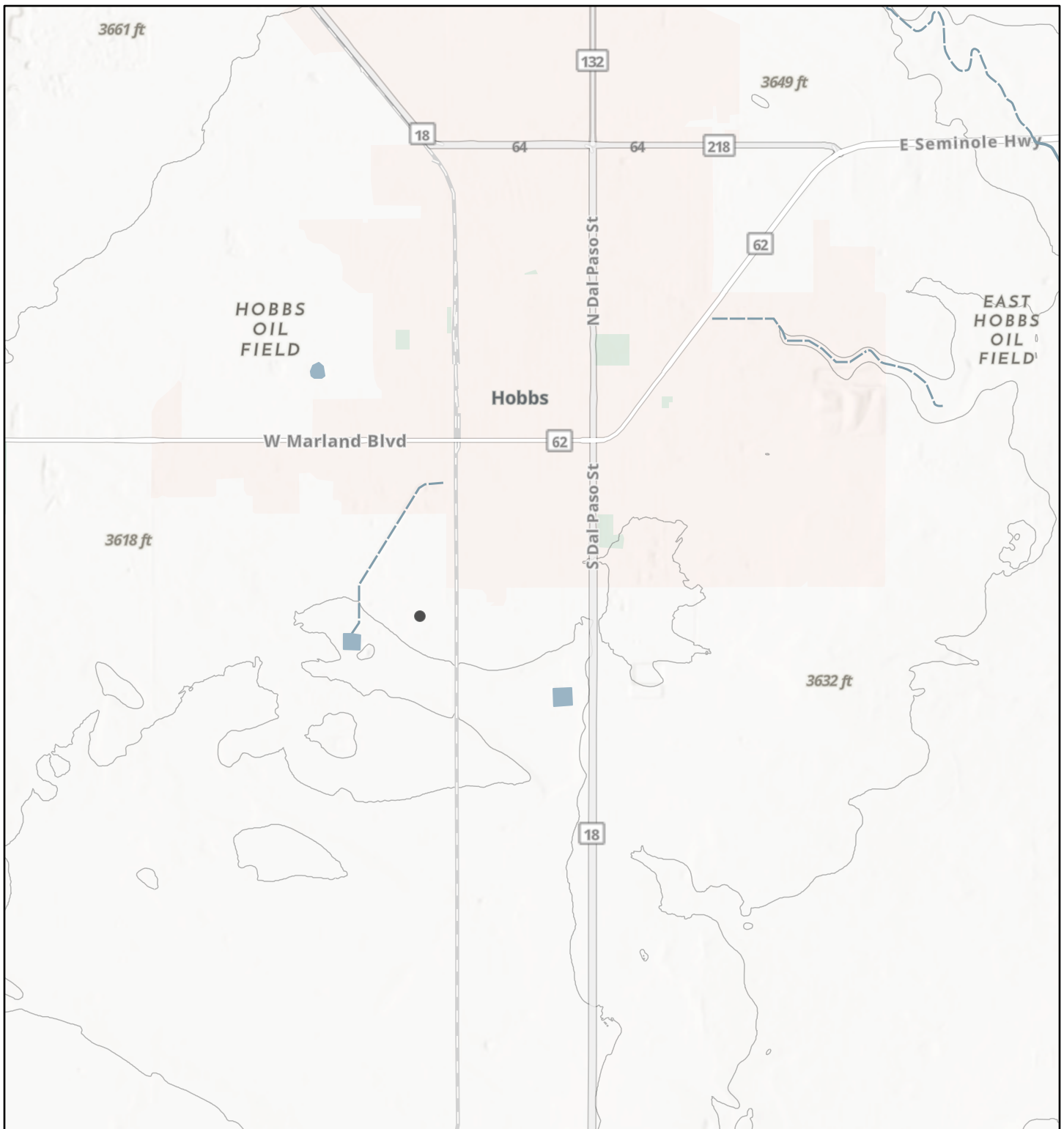
Any other fresh water well or spring: 0.18 miles (~950 feet)



Karst: Low

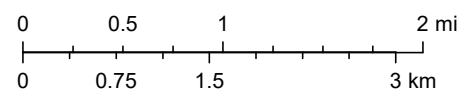


Coal Mines in New Mexico



5/5/2025, 2:17:12 PM

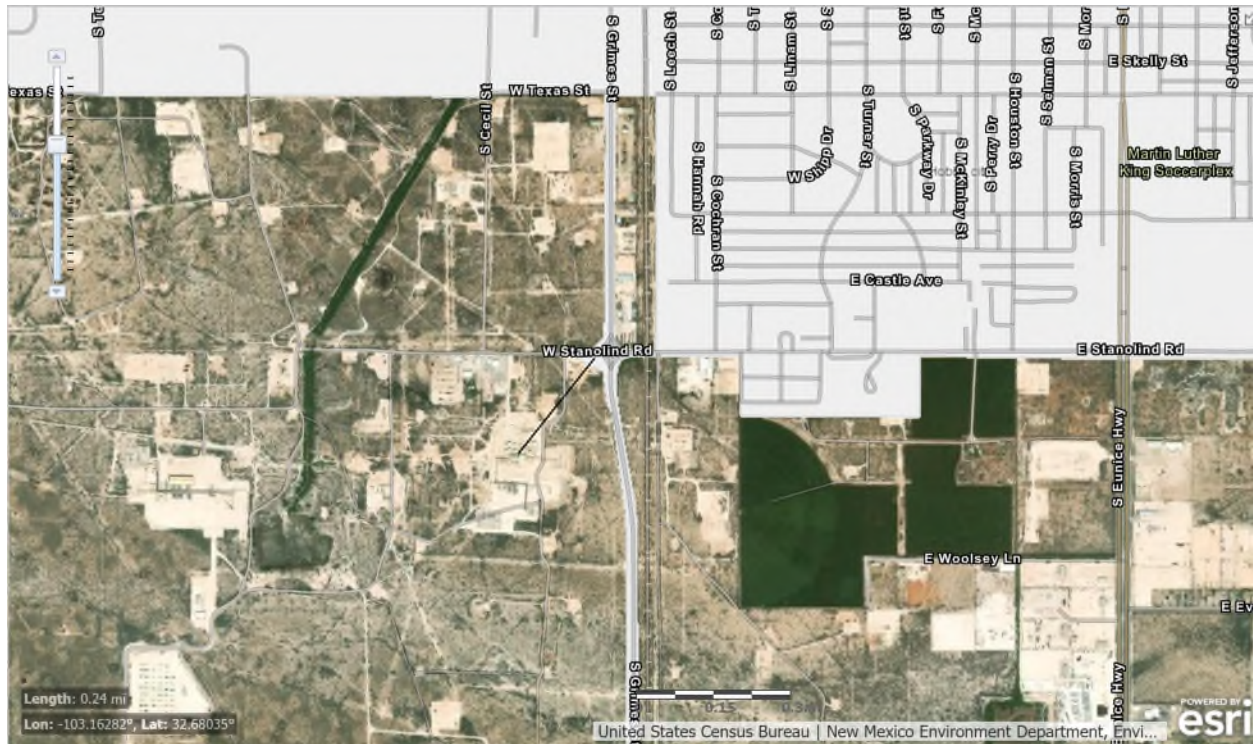
1:72,224



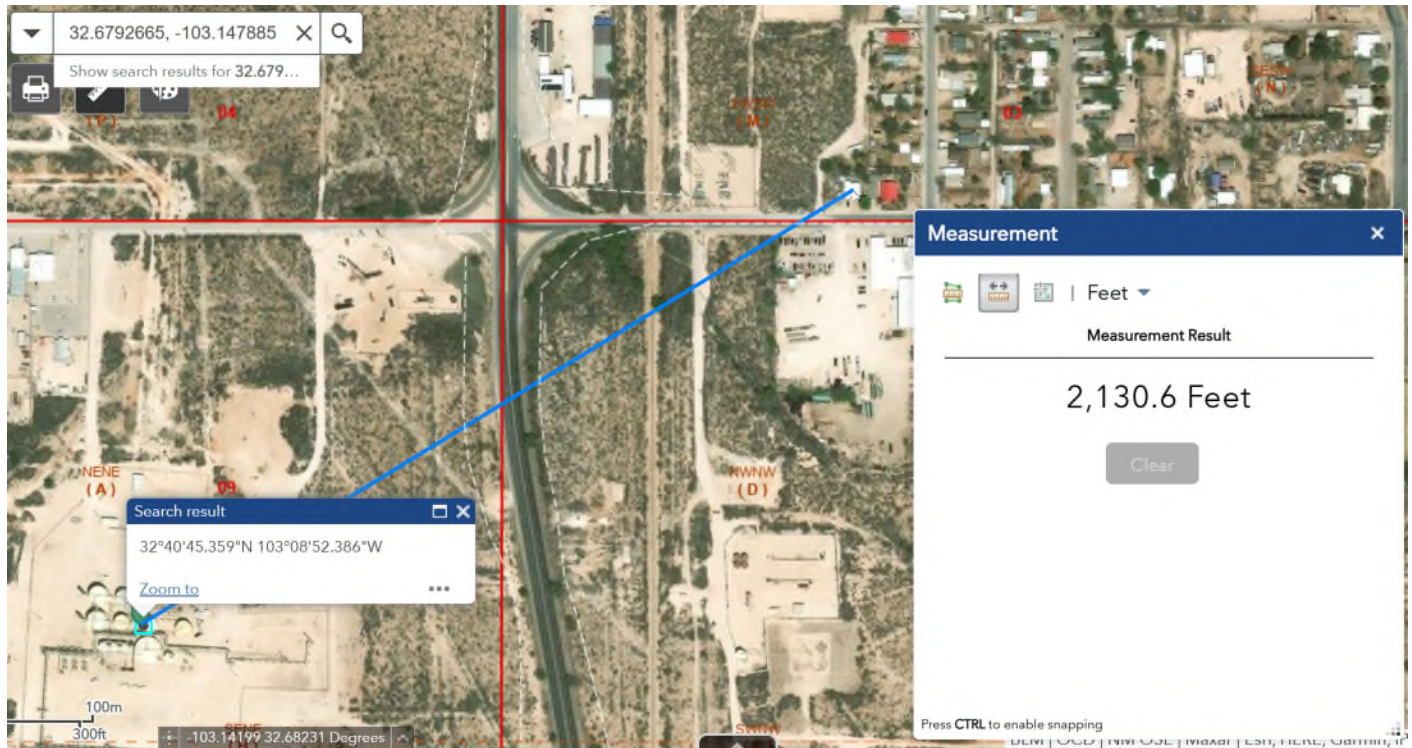
Esri, NASA, NGA, USGS, FEMA, NM Coal Mine Reclamation Program, NM EMNRD, Sources: Esri, TomTom, Garmin, FAO, NOAA, USGS, (c) OpenStreetMap contributors, and the GIS User Community, Sources: Esri, TomTom, Garmin, FAO, NOAA, USGS, (c) OpenStreetMap contributors, and the GIS User Community, Sources: Esri, (c) World Wildlife Fund, Inc.

EMNRD MMD GIS Coordinator

Municipal Boundaries ~ 0.24 miles (~1320 feet)



Residence ~2130 to the east



South Hobbs Unit CTB:

32.6792665, -103.147885

OCD Facility ID: fJXK1520829861

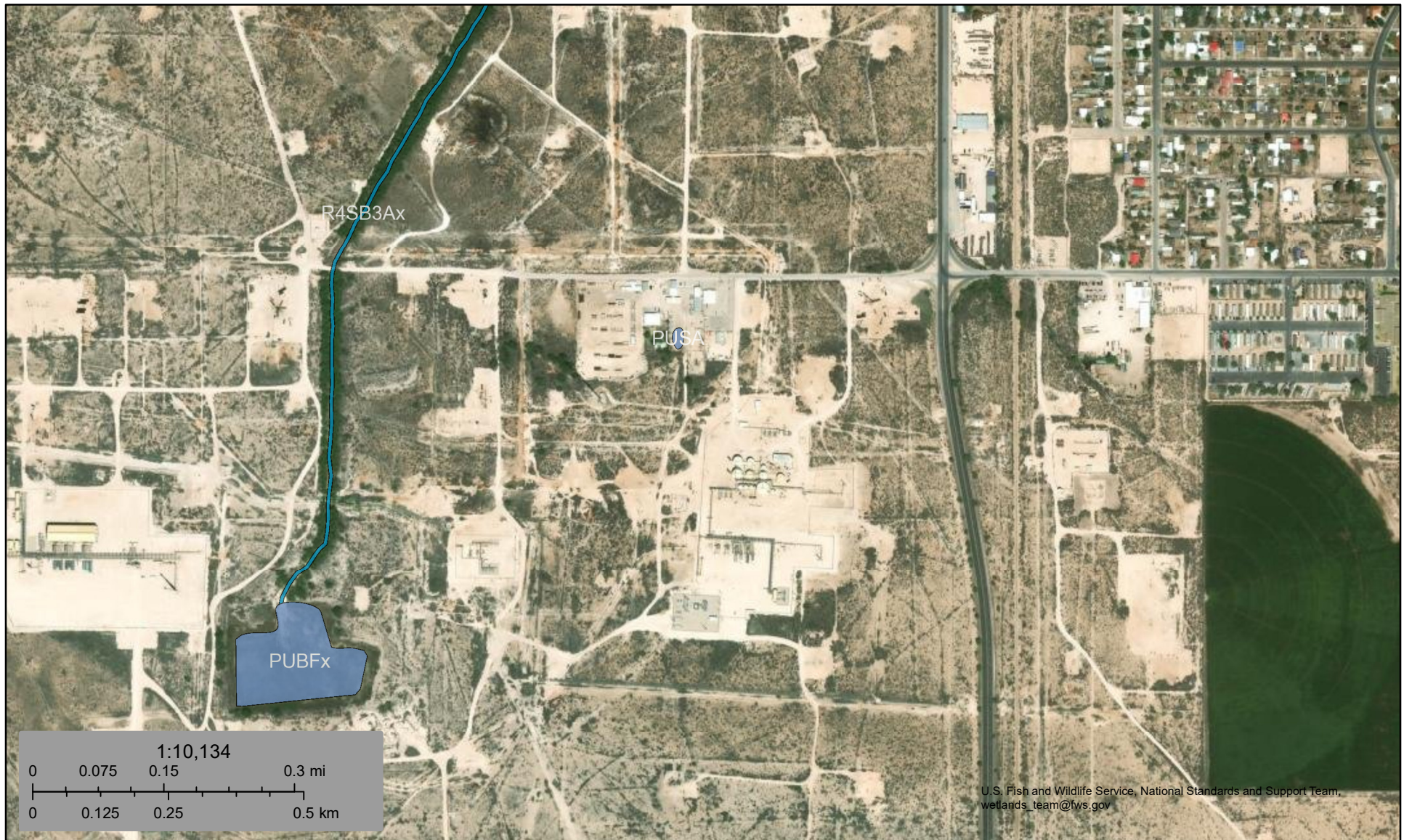




U.S. Fish and Wildlife Service

National Wetlands Inventory

Wetland - SHU CTB



May 5, 2025

Wetlands

- Estuarine and Marine Deepwater
- Estuarine and Marine Wetland

- Freshwater Emergent Wetland
- Freshwater Forested/Shrub Wetland
- Freshwater Pond

- Lake
- Other
- Riverine

This map is for general reference only. The US Fish and Wildlife Service is not responsible for the accuracy or currentness of the base data shown on this map. All wetlands related data should be used in accordance with the layer metadata found on the Wetlands Mapper web site.

Map Unit Description: Simona fine sandy loam, 0 to 3 percent slopes---Lea County, New Mexico

SH CTB.1

Lea County, New Mexico

SE—Simona fine sandy loam, 0 to 3 percent slopes

Map Unit Setting

National map unit symbol: dmr2

Elevation: 3,000 to 4,200 feet

Mean annual precipitation: 10 to 15 inches

Mean annual air temperature: 58 to 62 degrees F

Frost-free period: 190 to 205 days

Farmland classification: Not prime farmland

Map Unit Composition

Simona and similar soils: 85 percent

Minor components: 15 percent

Estimates are based on observations, descriptions, and transects of the mapunit.

Description of Simona

Setting

Landform: Plains

Landform position (three-dimensional): Rise

Down-slope shape: Linear

Across-slope shape: Linear

Parent material: Calcareous eolian deposits derived from sedimentary rock

Typical profile

A - 0 to 8 inches: fine sandy loam

Bk - 8 to 16 inches: gravelly fine sandy loam

Bkm - 16 to 26 inches: cemented material

Properties and qualities

Slope: 0 to 3 percent

Depth to restrictive feature: 7 to 20 inches to petrocalcic

Drainage class: Well drained

Runoff class: Very high

Capacity of the most limiting layer to transmit water (Ksat): Very low to moderately low (0.00 to 0.06 in/hr)

Depth to water table: More than 80 inches

Frequency of flooding: None

Frequency of ponding: None

Calcium carbonate, maximum content: 35 percent

Gypsum, maximum content: 1 percent

Maximum salinity: Nonsaline to very slightly saline (0.0 to 2.0 mmhos/cm)

Sodium adsorption ratio, maximum: 2.0

Available water supply, 0 to 60 inches: Very low (about 2.0 inches)

Interpretive groups

Land capability classification (irrigated): 6s

Map Unit Description: Simona fine sandy loam, 0 to 3 percent slopes---Lea County, New Mexico

SH CTB.1

Land capability classification (nonirrigated): 7s
Hydrologic Soil Group: D
Ecological site: R070BD002NM - Shallow Sandy
Hydric soil rating: No

Minor Components

Kimbrough

Percent of map unit: 8 percent
Ecological site: R077CY037TX - Very Shallow 16-21" PZ
Hydric soil rating: No

Lea

Percent of map unit: 7 percent
Ecological site: R077CY028TX - Limy Upland 16-21" PZ
Hydric soil rating: No

Data Source Information

Soil Survey Area: Lea County, New Mexico
Survey Area Data: Version 20, Sep 6, 2023

Map Unit Description: Kimbrough-Lea complex, dry, 0 to 3 percent slopes---Lea County, New Mexico

SH CTB.2

Lea County, New Mexico

KU—Kimbrough-Lea complex, dry, 0 to 3 percent slopes

Map Unit Setting

National map unit symbol: 2tw46

Elevation: 2,500 to 4,800 feet

Mean annual precipitation: 14 to 16 inches

Mean annual air temperature: 57 to 63 degrees F

Frost-free period: 180 to 220 days

Farmland classification: Not prime farmland

Map Unit Composition

Kimbrough and similar soils: 45 percent

Lea and similar soils: 25 percent

Minor components: 30 percent

Estimates are based on observations, descriptions, and transects of the mapunit.

Description of Kimbrough

Setting

Landform: Playa rims, plains

Down-slope shape: Convex, linear

Across-slope shape: Concave, linear

Parent material: Loamy eolian deposits derived from sedimentary rock

Typical profile

A - 0 to 3 inches: gravelly loam

Bw - 3 to 10 inches: loam

Bkkm1 - 10 to 16 inches: cemented material

Bkkm2 - 16 to 80 inches: cemented material

Properties and qualities

Slope: 0 to 3 percent

Depth to restrictive feature: 4 to 18 inches to petrocalcic

Drainage class: Well drained

Runoff class: Very high

Capacity of the most limiting layer to transmit water (Ksat): Very low to moderately low (0.00 to 0.01 in/hr)

Depth to water table: More than 80 inches

Frequency of flooding: None

Frequency of ponding: None

Calcium carbonate, maximum content: 95 percent

Maximum salinity: Nonsaline to very slightly saline (0.0 to 2.0 mmhos/cm)

Sodium adsorption ratio, maximum: 1.0

Available water supply, 0 to 60 inches: Very low (about 1.4 inches)

Interpretive groups

Land capability classification (irrigated): None specified

Map Unit Description: Kimbrough-Lea complex, dry, 0 to 3 percent slopes---Lea County, New Mexico

SH CTB.2

Land capability classification (nonirrigated): 7s
Hydrologic Soil Group: D
Ecological site: R077DY049TX - Very Shallow 12-17" PZ
Hydric soil rating: No

Description of Lea

Setting

Landform: Plains
Down-slope shape: Convex
Across-slope shape: Linear
Parent material: Calcareous, loamy eolian deposits from the blackwater draw formation of pleistocene age over indurated caliche of pliocene age

Typical profile

A - 0 to 10 inches: loam
Bk - 10 to 18 inches: loam
Bkk - 18 to 26 inches: gravelly fine sandy loam
Bkkm - 26 to 80 inches: cemented material

Properties and qualities

Slope: 0 to 3 percent
Depth to restrictive feature: 22 to 30 inches to petrocalcic
Drainage class: Well drained
Runoff class: High
Capacity of the most limiting layer to transmit water (Ksat): Very low to moderately low (0.00 to 0.06 in/hr)
Depth to water table: More than 80 inches
Frequency of flooding: None
Frequency of ponding: None
Calcium carbonate, maximum content: 90 percent
Maximum salinity: Nonsaline to very slightly saline (0.0 to 2.0 mmhos/cm)
Sodium adsorption ratio, maximum: 3.0
Available water supply, 0 to 60 inches: Very low (about 2.9 inches)

Interpretive groups

Land capability classification (irrigated): None specified
Land capability classification (nonirrigated): 7s
Hydrologic Soil Group: D
Ecological site: R077DY047TX - Sandy Loam 12-17" PZ
Hydric soil rating: No

Minor Components

Kenhill

Percent of map unit: 12 percent
Landform: Plains
Down-slope shape: Linear
Across-slope shape: Linear
Ecological site: R077DY038TX - Clay Loam 12-17" PZ
Hydric soil rating: No

Map Unit Description: Kimbrough-Lea complex, dry, 0 to 3 percent slopes---Lea County, New Mexico

SH CTB.2

Douro

Percent of map unit: 12 percent

Landform: Plains

Down-slope shape: Linear

Across-slope shape: Linear

Ecological site: R077DY047TX - Sandy Loam 12-17" PZ

Other vegetative classification: Unnamed (G077DH000TX)

Hydric soil rating: No

Spraberry

Percent of map unit: 6 percent

Landform: Playa rims, plains

Down-slope shape: Convex, linear

Across-slope shape: Linear

Ecological site: R077DY049TX - Very Shallow 12-17" PZ

Other vegetative classification: Unnamed (G077DH000TX)

Hydric soil rating: No

Data Source Information

Soil Survey Area: Lea County, New Mexico

Survey Area Data: Version 20, Sep 6, 2023

Soil Map—Lea County, New Mexico
(SH CTB)




Natural Resources
Conservation Service

Web Soil Survey
National Cooperative Soil Survey

9/30/2024
Page 1 of 3

MAP INFORMATION

MAP LEGEND

 Sodic Spot

Aerial Photography

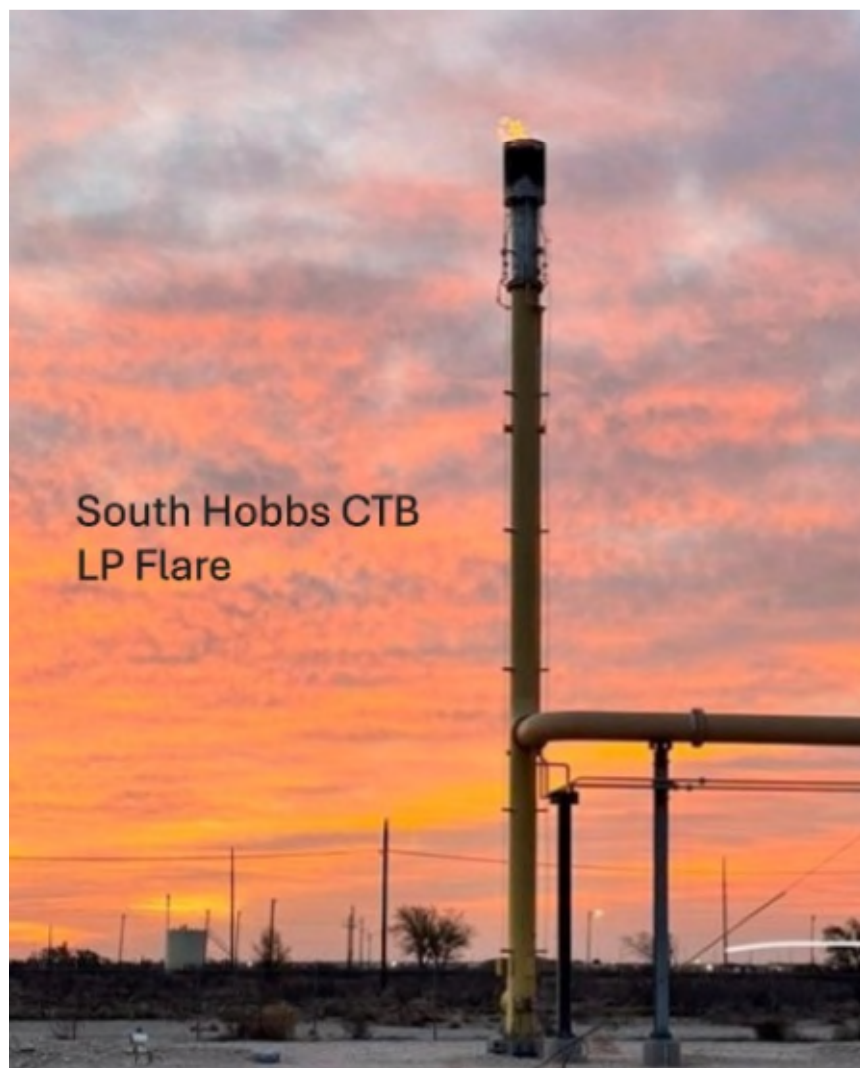
The orthophoto or other base map on which the soil lines were compiled and digitized probably differs from the background imagery displayed on these maps. As a result, some minor shifting of map unit boundaries may be evident.

Map Unit Legend

Map Unit Symbol	Map Unit Name	Acres in AOI	Percent of AOI
KU	Kimbrough-Lea complex, dry, 0 to 3 percent slopes	0.2	0.5%
SE	Simona fine sandy loam, 0 to 3 percent slopes	31.6	99.5%
Totals for Area of Interest		31.7	100.0%

Depth to Water: 26 to 50 feet, determined by USGS





Pantechs Laboratories, Inc. - Order: 4172-8441 - 2/20/2025 - South Hobbs Unit - Compressor Suction and Discharge Samples at South Hobbs Battery



ANALYSIS certificate

OPERATOR	Occidental Permian Ltd.	PRESSURE	30 psig
LOCATION	South Hobbs Unit 31920	SAMPLE/ATM TEMP	40 F / 27 F
SITE	Central Tank Battery	COLLECTION DATE/TIME	02/20/2025 11:27 AM
SAMPLE POINT	Compressor Suction	COLLECTION BY	Cody Carson
METER ID		SPOT/COMPOSITE	Spot
CONTAINER(S)	PL3019	PRESSURE/TEMP BASE	14.650 psi/60 F

ONSITE TESTING - STAIN TUBE

METHOD	COMPOUND	MOL%	GRAINS/100 SCF	PPMV	LB/MMSCF
GPA2377	hydrogen sulfide	1.3649	866.73	13,781.0	650.0

FRACTIONAL: GPA 2261-20

COMPOUND	FORMULA	MOL%	WT%	GPM
NITROGEN	N2	0.0925	0.0569	
CARBON DIOXIDE	CO2	88.1706	85.1966	14.857
HYDROGEN SULFIDE	H2S	1.3649	1.0213	0.182
METHANE	C1	0.5453	0.1921	0.091
ETHANE	C2	0.4164	0.2749	0.110
PROPANE	C3	2.1872	2.1176	0.595
I-BUTANE	iC4	0.9443	1.2050	0.305
N-BUTANE	nC4	2.5548	3.2603	0.801
I-PENTANE	iC5	1.0977	1.7389	0.396
N-PENTANE	nC5	0.8704	1.3788	0.312
HEXANES PLUS	C6+	1.7559	3.5576	0.721
TOTALS:		100.0000	100.0000	18.370

Value of "0.0000" in fractional interpreted as below detectable limit.

LIQUID YIELD (GAL/MSCF)

ETHANE+	PROPANE+	BUTANES+	PENTANES+	26 PSI RVP	10 PSI RVP
3.240	3.130	2.535	1.429		

CALCULATED PROPERTIES: GPA 2172/ASTM D3588

PROPERTY	BTU/CF GROSS	BTU/CF NET	SPECIFIC GR.	Z FACTOR	MOL WEIGHT	WOBBE INDX
DRY	358.90	331.49	1.583	0.993	45.546	285.25
H2O SAT	353.86	326.01	1.546	0.992	44.750	284.59

Sante Fe Main Office
Phone: (505) 476-3441

General Information
Phone: (505) 629-6116

Online Phone Directory
<https://www.emnrd.nm.gov/ocd/contact-us>

State of New Mexico
Energy, Minerals and Natural Resources
Oil Conservation Division
1220 S. St Francis Dr.
Santa Fe, NM 87505

QUESTIONS

Action 449705

QUESTIONS

Operator: OCCIDENTAL PERMIAN LTD P.O. Box 4294 Houston, TX 772104294	OGRID: 157984
	Action Number: 449705
	Action Type: [C-141] Revegetation Report C-141 (C-141-v-Revegetation)

QUESTIONS

Prerequisites	
Incident ID (n#)	nAPP2507943906
Incident Name	NAPP2507943906 SOUTH HOBBS CTB @ 0
Incident Type	Other
Incident Status	Re-vegetation Report Received
Incident Facility	[fJXK1520829861] South Hobbs Unit CTB

Location of Release Source

Please answer all the questions in this group.

Site Name	SOUTH HOBBS CTB
Date Release Discovered	02/21/2025
Surface Owner	Private

Incident Details

Please answer all the questions in this group.

Incident Type	Other
Did this release result in a fire or is the result of a fire	No
Did this release result in any injuries	No
Has this release reached or does it have a reasonable probability of reaching a watercourse	No
Has this release endangered or does it have a reasonable probability of endangering public health	No
Has this release substantially damaged or will it substantially damage property or the environment	No
Is this release of a volume that is or may with reasonable probability be detrimental to fresh water	No

Nature and Volume of Release

Material(s) released, please answer all that apply below. Any calculations or specific justifications for the volumes provided should be attached to the follow-up C-141 submission.

Crude Oil Released (bbls) Details	Not answered.
Produced Water Released (bbls) Details	Not answered.
Is the concentration of chloride in the produced water >10,000 mg/l	Not answered.
Condensate Released (bbls) Details	Not answered.
Natural Gas Vented (Mcf) Details	Not answered.
Natural Gas Flared (Mcf) Details	Cause: Equipment Failure Gas Compressor Station Natural Gas Flared Released: 15 Mcf Recovered: 0 Mcf Lost: 15 Mcf.
Other Released Details	Cause: Equipment Failure Gas Compressor Station Carbon Dioxide Released: 115 Mcf Recovered: 0 Mcf Lost: 115 Mcf.
Are there additional details for the questions above (i.e. any answer containing Other, Specify, Unknown, and/or Fire, or any negative lost amounts)	Not answered.

Sante Fe Main Office
Phone: (505) 476-3441

General Information
Phone: (505) 629-6116

Online Phone Directory
<https://www.emnrd.nm.gov/ocd/contact-us>

State of New Mexico
Energy, Minerals and Natural Resources
Oil Conservation Division
1220 S. St Francis Dr.
Santa Fe, NM 87505

QUESTIONS, Page 2

Action 449705

QUESTIONS (continued)

Operator: OCCIDENTAL PERMIAN LTD P.O. Box 4294 Houston, TX 772104294	OGRID: 157984
	Action Number: 449705
	Action Type: [C-141] Revegetation Report C-141 (C-141-v-Revegetation)

QUESTIONS

Nature and Volume of Release (continued)	
Is this a gas only submission (i.e. only significant Mcf values reported)	Yes, according to supplied volumes this appears to be a "gas only" report.
Was this a major release as defined by Subsection A of 19.15.29.7 NMAC	No
Reasons why this would be considered a submission for a notification of a major release	<i>Unavailable.</i>
<i>With the implementation of the 19.15.27 NMAC (05/25/2021), venting and/or flaring of natural gas (i.e. gas only) are to be submitted on the C-129 form.</i>	

Initial Response

The responsible party must undertake the following actions immediately unless they could create a safety hazard that would result in injury.

The source of the release has been stopped	True
The impacted area has been secured to protect human health and the environment	True
Released materials have been contained via the use of berms or dikes, absorbent pads, or other containment devices	False
All free liquids and recoverable materials have been removed and managed appropriately	False
If all the actions described above have not been undertaken, explain why	This is a CO2 gas release only. There was no liquid or fluid impact to the area and/or physical remedial actions were necessary or required for the soil, groundwater, surface water, or environment, in or around the flare area as nothing occurred on the ground as there was no involvement, containment, or spillage of liquids or fluids during this event.

Per Paragraph (4) of Subsection B of 19.15.29.8 NMAC the responsible party may commence remediation immediately after discovery of a release. If remediation has begun, please prepare and attach a narrative of actions to date in the follow-up C-141 submission. If remedial efforts have been successfully completed or if the release occurred within a lined containment area (see Subparagraph (a) of Paragraph (5) of Subsection A of 19.15.29.11 NMAC), please prepare and attach all information needed for closure evaluation in the follow-up C-141 submission.

I hereby certify that the information given above is true and complete to the best of my knowledge and understand that pursuant to OCD rules and regulations all operators are required to report and/or file certain release notifications and perform corrective actions for releases which may endanger public health or the environment. The acceptance of a C-141 report by the OCD does not relieve the operator of liability should their operations have failed to adequately investigate and remediate contamination that pose a threat to groundwater, surface water, human health or the environment. In addition, OCD acceptance of a C-141 report does not relieve the operator of responsibility for compliance with any other federal, state, or local laws and/or regulations.

I hereby agree and sign off to the above statement	Name: Shaina Rojas Title: Specialist Environmental Email: Shaina_rojas@oxy.com Date: 06/02/2025
--	--

Sante Fe Main Office
Phone: (505) 476-3441

General Information
Phone: (505) 629-6116

Online Phone Directory
<https://www.emnrd.nm.gov/ocd/contact-us>

State of New Mexico
Energy, Minerals and Natural Resources
Oil Conservation Division
1220 S. St Francis Dr.
Santa Fe, NM 87505

QUESTIONS, Page 3

Action 449705

QUESTIONS (continued)

Operator: OCCIDENTAL PERMIAN LTD P.O. Box 4294 Houston, TX 772104294	OGRID: 157984
	Action Number: 449705
	Action Type: [C-141] Revegetation Report C-141 (C-141-v-Revegetation)

QUESTIONS

Site Characterization	
<i>Please answer all the questions in this group (only required when seeking remediation plan approval and beyond). This information must be provided to the appropriate district office no later than 90 days after the release discovery date.</i>	
What is the shallowest depth to groundwater beneath the area affected by the release in feet below ground surface (ft bgs)	Between 26 and 50 (ft.)
What method was used to determine the depth to ground water	U.S. Geological Survey
Did this release impact groundwater or surface water	No
What is the minimum distance, between the closest lateral extents of the release and the following surface areas:	
A continuously flowing watercourse or any other significant watercourse	Between 1000 (ft.) and ½ (mi.)
Any lakebed, sinkhole, or playa lake (measured from the ordinary high-water mark)	Between 1000 (ft.) and ½ (mi.)
An occupied permanent residence, school, hospital, institution, or church	Between 1000 (ft.) and ½ (mi.)
A spring or a private domestic fresh water well used by less than five households for domestic or stock watering purposes	Between 300 and 500 (ft.)
Any other fresh water well or spring	Between 500 and 1000 (ft.)
Incorporated municipal boundaries or a defined municipal fresh water well field	Between 1000 (ft.) and ½ (mi.)
A wetland	Greater than 5 (mi.)
A subsurface mine	Greater than 5 (mi.)
An (non-karst) unstable area	Greater than 5 (mi.)
Categorize the risk of this well / site being in a karst geology	Low
A 100-year floodplain	Greater than 5 (mi.)
Did the release impact areas not on an exploration, development, production, or storage site	No

Remediation Plan	
<i>Please answer all the questions that apply or are indicated. This information must be provided to the appropriate district office no later than 90 days after the release discovery date.</i>	
Requesting a remediation plan approval with this submission	Yes
<i>Attach a comprehensive report demonstrating the lateral and vertical extents of soil contamination associated with the release have been determined, pursuant to 19.15.29.11 NMAC and 19.15.29.13 NMAC.</i>	
Have the lateral and vertical extents of contamination been fully delineated	Yes
Was this release entirely contained within a lined containment area	No
Soil Contamination Sampling: (Provide the highest observable value for each, in milligrams per kilograms.)	
Chloride (EPA 300.0 or SM4500 Cl B)	0
TPH (GRO+DRO+MRO) (EPA SW-846 Method 8015M)	0
GRO+DRO (EPA SW-846 Method 8015M)	0
BTEX (EPA SW-846 Method 8021B or 8260B)	0
Benzene (EPA SW-846 Method 8021B or 8260B)	0
<i>Per Subsection B of 19.15.29.11 NMAC unless the site characterization report includes completed efforts at remediation, the report must include a proposed remediation plan in accordance with 19.15.29.12 NMAC, which includes the anticipated timelines for beginning and completing the remediation.</i>	
On what estimated date will the remediation commence	02/21/2025
On what date will (or did) the final sampling or liner inspection occur	02/21/2025
On what date will (or was) the remediation complete(d)	02/21/2025
What is the estimated surface area (in square feet) that will be reclaimed	0
What is the estimated volume (in cubic yards) that will be reclaimed	0
What is the estimated surface area (in square feet) that will be remediated	0
What is the estimated volume (in cubic yards) that will be remediated	0
<i>These estimated dates and measurements are recognized to be the best guess or calculation at the time of submission and may (be) change(d) over time as more remediation efforts are completed.</i>	
<i>The OCD recognizes that proposed remediation measures may have to be minimally adjusted in accordance with the physical realities encountered during remediation. If the responsible party has any need to significantly deviate from the remediation plan proposed, then it should consult with the division to determine if another remediation plan submission is required.</i>	

Sante Fe Main Office
Phone: (505) 476-3441

General Information
Phone: (505) 629-6116

Online Phone Directory
<https://www.emnrd.nm.gov/ocd/contact-us>

State of New Mexico
Energy, Minerals and Natural Resources
Oil Conservation Division
1220 S. St Francis Dr.
Santa Fe, NM 87505

QUESTIONS, Page 4

Action 449705

QUESTIONS (continued)

Operator: OCCIDENTAL PERMIAN LTD P.O. Box 4294 Houston, TX 772104294	OGRID: 157984
	Action Number: 449705
	Action Type: [C-141] Revegetation Report C-141 (C-141-v-Revegetation)

QUESTIONS

Remediation Plan (continued)	
<i>Please answer all the questions that apply or are indicated. This information must be provided to the appropriate district office no later than 90 days after the release discovery date.</i>	
This remediation will (or is expected to) utilize the following processes to remediate / reduce contaminants:	
<i>(Select all answers below that apply.)</i>	
(Ex Situ) Excavation and off-site disposal (i.e. dig and haul, hydrovac, etc.)	<i>Not answered.</i>
(Ex Situ) Excavation and on-site remediation (i.e. On-Site Land Farms)	<i>Not answered.</i>
(In Situ) Soil Vapor Extraction	<i>Not answered.</i>
(In Situ) Chemical processing (i.e. Soil Shredding, Potassium Permanganate, etc.)	<i>Not answered.</i>
(In Situ) Biological processing (i.e. Microbes / Fertilizer, etc.)	<i>Not answered.</i>
(In Situ) Physical processing (i.e. Soil Washing, Gypsum, Disking, etc.)	<i>Not answered.</i>
Ground Water Abatement pursuant to 19.15.30 NMAC	<i>Not answered.</i>
OTHER (Non-listed remedial process)	Yes
Other Non-listed Remedial Process. Please specify	This is a CO2 gas release only. There was no liquid or fluid impact to the area and/or physical remedial actions were necessary or required for the soil, groundwater, surface water, or environment, in or around the flare area as nothing occurred on the ground as there was no involvement, containment, or spillage of liquids or fluids during this event.
<i>Per Subsection B of 19.15.29.11 NMAC unless the site characterization report includes completed efforts at remediation, the report must include a proposed remediation plan in accordance with 19.15.29.12 NMAC, which includes the anticipated timelines for beginning and completing the remediation.</i>	
I hereby certify that the information given above is true and complete to the best of my knowledge and understand that pursuant to OCD rules and regulations all operators are required to report and/or file certain release notifications and perform corrective actions for releases which may endanger public health or the environment. The acceptance of a C-141 report by the OCD does not relieve the operator of liability should their operations have failed to adequately investigate and remediate contamination that pose a threat to groundwater, surface water, human health or the environment. In addition, OCD acceptance of a C-141 report does not relieve the operator of responsibility for compliance with any other federal, state, or local laws and/or regulations.	
I hereby agree and sign off to the above statement	Name: Shaina Rojas Title: Specialist Environmental Email: Shaina_rojas@oxy.com Date: 06/02/2025
<i>The OCD recognizes that proposed remediation measures may have to be minimally adjusted in accordance with the physical realities encountered during remediation. If the responsible party has any need to significantly deviate from the remediation plan proposed, then it should consult with the division to determine if another remediation plan submission is required.</i>	

Sante Fe Main Office
Phone: (505) 476-3441

General Information
Phone: (505) 629-6116

Online Phone Directory
<https://www.emnrd.nm.gov/ocd/contact-us>

State of New Mexico
Energy, Minerals and Natural Resources
Oil Conservation Division
1220 S. St Francis Dr.
Santa Fe, NM 87505

QUESTIONS, Page 5

Action 449705

QUESTIONS (continued)

Operator: OCCIDENTAL PERMIAN LTD P.O. Box 4294 Houston, TX 772104294	OGRID: 157984
	Action Number: 449705
	Action Type: [C-141] Revegetation Report C-141 (C-141-v-Revegetation)

QUESTIONS

Deferral Requests Only	
<i>Only answer the questions in this group if seeking a deferral upon approval this submission. Each of the following items must be confirmed as part of any request for deferral of remediation.</i>	
Requesting a deferral of the remediation closure due date with the approval of this submission	No

Sante Fe Main Office
Phone: (505) 476-3441

General Information
Phone: (505) 629-6116

Online Phone Directory
<https://www.emnrd.nm.gov/ocd/contact-us>

State of New Mexico
Energy, Minerals and Natural Resources
Oil Conservation Division
1220 S. St Francis Dr.
Santa Fe, NM 87505

QUESTIONS, Page 6

Action 449705

QUESTIONS (continued)

Operator: OCCIDENTAL PERMIAN LTD P.O. Box 4294 Houston, TX 772104294	OGRID: 157984
	Action Number: 449705
	Action Type: [C-141] Revegetation Report C-141 (C-141-v-Revegetation)

QUESTIONS

Sampling Event Information	
Last sampling notification (C-141N) recorded	444575
Sampling date pursuant to Subparagraph (a) of Paragraph (1) of Subsection D of 19.15.29.12 NMAC	02/21/2025
What was the (estimated) number of samples that were to be gathered	0
What was the sampling surface area in square feet	0

Remediation Closure Request

Only answer the questions in this group if seeking remediation closure for this release because all remediation steps have been completed.

Requesting a remediation closure approval with this submission	Yes
Have the lateral and vertical extents of contamination been fully delineated	Yes
Was this release entirely contained within a lined containment area	No
All areas reasonably needed for production or subsequent drilling operations have been stabilized, returned to the sites existing grade, and have a soil cover that prevents ponding of water, minimizing dust and erosion	Yes
What was the total surface area (in square feet) remediated	0
What was the total volume (cubic yards) remediated	0
All areas not reasonably needed for production or subsequent drilling operations have been reclaimed to contain a minimum of four feet of non-waste contain earthen material with concentrations less than 600 mg/kg chlorides, 100 mg/kg TPH, 50 mg/kg BTEX, and 10 mg/kg Benzene	Yes
What was the total surface area (in square feet) reclaimed	0
What was the total volume (in cubic yards) reclaimed	0
Summarize any additional remediation activities not included by answers (above)	This is a CO2 gas release only. There was no liquid or fluid impact to the area and/or physical remedial actions were necessary or required for the soil, groundwater, surface water, or environment, in or around the flare area as nothing occurred on the ground as there was no involvement, containment, or spillage of liquids or fluids during this event.

The responsible party must attach information demonstrating they have complied with all applicable closure requirements and any conditions or directives of the OCD. This demonstration should be in the form of a comprehensive report (in .pdf format) including a scaled site map, sampling diagrams, relevant field notes, photographs of any excavation prior to backfilling, laboratory data including chain of custody documents of final sampling, and a narrative of the remedial activities. Refer to 19.15.29.12 NMAC.

I hereby certify that the information given above is true and complete to the best of my knowledge and understand that pursuant to OCD rules and regulations all operators are required to report and/or file certain release notifications and perform corrective actions for releases which may endanger public health or the environment. The acceptance of a C-141 report by the OCD does not relieve the operator of liability should their operations have failed to adequately investigate and remediate contamination that pose a threat to groundwater, surface water, human health or the environment. In addition, OCD acceptance of a C-141 report does not relieve the operator of responsibility for compliance with any other federal, state, or local laws and/or regulations. The responsible party acknowledges they must substantially restore, reclaim, and re-vegetate the impacted surface area to the conditions that existed prior to the release or their final land use in accordance with 19.15.29.13 NMAC including notification to the OCD when reclamation and re-vegetation are complete.

I hereby agree and sign off to the above statement	Name: Shaina Rojas Title: Specialist Environmental Email: Shaina_rojas@oxy.com Date: 06/02/2025
--	--

Sante Fe Main Office
Phone: (505) 476-3441

General Information
Phone: (505) 629-6116

Online Phone Directory
<https://www.emnrd.nm.gov/ocd/contact-us>

State of New Mexico
Energy, Minerals and Natural Resources
Oil Conservation Division
1220 S. St Francis Dr.
Santa Fe, NM 87505

QUESTIONS, Page 7

Action 449705

QUESTIONS (continued)

Operator: OCCIDENTAL PERMIAN LTD P.O. Box 4294 Houston, TX 772104294	OGRID: 157984
	Action Number: 449705
	Action Type: [C-141] Revegetation Report C-141 (C-141-v-Revegetation)

QUESTIONS

Reclamation Report	
<i>Only answer the questions in this group if all reclamation steps have been completed.</i>	
Requesting a reclamation approval with this submission	Yes
What was the total reclamation surface area (in square feet) for this site	0
What was the total volume of replacement material (in cubic yards) for this site	0
<i>Per Paragraph (1) of Subsection D of 19.15.29.13 NMAC the reclamation must contain a minimum of four feet of non-waste containing, uncontaminated, earthen material with chloride concentrations less than 600 mg/kg as analyzed by EPA Method 300.0, or other test methods approved by the division. The soil cover must include a top layer, which is either the background thickness of topsoil or one foot of suitable material to establish vegetation at the site, whichever is greater.</i>	
Is the soil top layer complete and is it suitable material to establish vegetation	Yes
On what (estimated) date will (or was) the reseedling commence(d)	02/21/2025
Summarize any additional reclamation activities not included by answers (above)	This is a CO2 gas release only. There was no liquid or fluid impact to the area and/or physical remedial actions were necessary or required for the soil, groundwater, surface water, or environment, in or around the flare area as nothing occurred on the ground as there was no involvement, containment, or spillage of liquids or fluids during this event.
<i>The responsible party must attach information demonstrating they have complied with all applicable reclamation requirements and any conditions or directives of the OCD. This demonstration should be in the form of attachments (in .pdf format) including a scaled site map, any proposed reseedling plans or relevant field notes, photographs of reclaimed area, and a narrative of the reclamation activities. Refer to 19.15.29.13 NMAC.</i>	
I hereby certify that the information given above is true and complete to the best of my knowledge and understand that pursuant to OCD rules and regulations all operators are required to report and/or file certain release notifications and perform corrective actions for releases which may endanger public health or the environment. The acceptance of a C-141 report by the OCD does not relieve the operator of liability should their operations have failed to adequately investigate and remediate contamination that pose a threat to groundwater, surface water, human health or the environment. In addition, OCD acceptance of a C-141 report does not relieve the operator of responsibility for compliance with any other federal, state, or local laws and/or regulations. The responsible party acknowledges they must substantially restore, reclaim, and re-vegetate the impacted surface area to the conditions that existed prior to the release or their final land use in accordance with 19.15.29.13 NMAC including notification to the OCD when reclamation and re-vegetation are complete.	
I hereby agree and sign off to the above statement	Name: Shaina Rojas Title: Specialist Environmental Email: Shaina_rojas@oxy.com Date: 06/02/2025

Sante Fe Main Office
Phone: (505) 476-3441

General Information
Phone: (505) 629-6116

Online Phone Directory
<https://www.emnrd.nm.gov/ocd/contact-us>

State of New Mexico
Energy, Minerals and Natural Resources
Oil Conservation Division
1220 S. St Francis Dr.
Santa Fe, NM 87505

QUESTIONS, Page 8

Action 449705

QUESTIONS (continued)

Operator: OCCIDENTAL PERMIAN LTD P.O. Box 4294 Houston, TX 772104294	OGRID: 157984
	Action Number: 449705
	Action Type: [C-141] Revegetation Report C-141 (C-141-v-Revegetation)

QUESTIONS

Revegetation Report	
<i>Only answer the questions in this group if all surface restoration, reclamation and re-vegetation obligations have been satisfied.</i>	
Requesting a restoration complete approval with this submission	Yes
What was the total revegetation surface area (in square feet) for this site	0
<i>Per Paragraph (2) of Subsection D of 19.15.29.13 NMAC the responsible party must reseed disturbed area in the first favorable growing season following closure of the site.</i>	
On what date did the reseeded commence	02/21/2025
On what date was the vegetative cover inspected	02/21/2025
What was the life form ratio compared to pre-disturbance levels	9999
What was the total percent plant cover compared to pre-disturbance levels	9999
Summarize any additional revegetation activities not included by answers (above)	This is a CO2 gas release only. There was no liquid or fluid impact to the area and/or physical remedial actions were necessary or required for the soil, groundwater, surface water, or environment, in or around the flare area as nothing occurred on the ground as there was no involvement, containment, or spillage of liquids or fluids during this event.
<i>The responsible party must attach information demonstrating they have complied with all applicable re-vegetation requirements and any conditions or directives of the OCD. This demonstration should be in the form of attachments (in .pdf format) including a scaled site map, any life form ratio and percent plant cover sampling diagrams or other relevant field notes, photographs of re-vegetated areas, and a narrative of the re-vegetation activities. Refer to 19.15.29.13 NMAC.</i>	
I hereby certify that the information given above is true and complete to the best of my knowledge and understand that pursuant to OCD rules and regulations all operators are required to report and/or file certain release notifications and perform corrective actions for releases which may endanger public health or the environment. The acceptance of a C-141 report by the OCD does not relieve the operator of liability should their operations have failed to adequately investigate and remediate contamination that pose a threat to groundwater, surface water, human health or the environment. In addition, OCD acceptance of a C-141 report does not relieve the operator of responsibility for compliance with any other federal, state, or local laws and/or regulations. The responsible party acknowledges they must substantially restore, reclaim, and re-vegetate the impacted surface area to the conditions that existed prior to the release or their final land use in accordance with 19.15.29.13 NMAC including notification to the OCD when reclamation and re-vegetation are complete.	
I hereby agree and sign off to the above statement	Name: Shaina Rojas Title: Specialist Environmental Email: Shaina_rojas@oxy.com Date: 06/02/2025
<i>Per Paragraph (4) of Subsection (D) of 19.15.29.13 NMAC for any major or minor release containing liquids, the responsible party must notify the division when reclamation and re-vegetation are complete.</i>	

Sante Fe Main Office
Phone: (505) 476-3441

General Information
Phone: (505) 629-6116

Online Phone Directory
<https://www.emnrd.nm.gov/ocd/contact-us>

State of New Mexico
Energy, Minerals and Natural Resources
Oil Conservation Division
1220 S. St Francis Dr.
Santa Fe, NM 87505

CONDITIONS

Action 449705

CONDITIONS

Operator: OCCIDENTAL PERMIAN LTD P.O. Box 4294 Houston, TX 772104294	OGRID: 157984
	Action Number: 449705
	Action Type: [C-141] Revegetation Report C-141 (C-141-v-Revegetation)

CONDITIONS

Created By	Condition	Condition Date
scwells	The revegetation report has been approved pursuant to 19.15.29.13 E. NMAC. The acceptance of this report by the OCD does not relieve the operator of liability should their operations have failed to adequately investigate and remediate contamination that pose a threat to groundwater, surface water, human health or the environment; or if the location fails to revegetate properly. In addition, the OCD approval does not relieve the responsible party of compliance with any other federal, state, or local laws and/or regulations.	6/9/2025