

Environmental Site Remediation Work Plan

General Information

NMOCD District:	Eddy	Incident ID:	nAPP2308926215
Landowner:	New Mexico State Trust Lands	Lat/Long:	32.07028,-103.95472
Client:	Solaris Water Midstream	Site Location:	Eddy State Water Recycling
Date:	May 16, 2025	Project #:	25A-01145
Client Contact:	Jeffery Cook	Phone #:	832.304.7003
Vertex PM:	Chance Dixon	Phone #:	575.689.7007

Objective

Solaris Water Midstream, LLC. (Solaris) retained Vertex Resource Services, Inc. to complete remedial actions and perform final surface restoration activities.

The March 2023 release occurred at the northeast quadrant of the Eddy State #002 (API 30-015-44001) SWD well production site on equipment associated with the Eddy State Water Treatment and Reuse Facility (Facility ID fVV2105730365; hereafter referred to as “site”). In May 2023, remediation was initiated for on-site closure that was performed by Terracon. On February 27, 2025, New Mexico Oil Conservation Division (NMOCD) denied the closure report and requested additional horizontal delineation to the most stringent closure criteria.

The SWD well was plugged and abandoned in December 2022 and the temporary produced water tanks associated with the water treatment-resuse facility have been removed. Solaris elects to move forward with final remediation and surface reclamation.

Figure 1 shows:

- Portions of the water treatment-resuse facility
- Plugged and abandoned SWD well
- Prior in-use remediation area
- Production pad
- Proposed surface restoration area

Prior On-site Closure Remedial Activities

Remedial activities for on-site closure were completed on June 7, 2023. Impacted material was excavated to depths of 1 to 4 feet below ground surface (bgs) to meet Closure Criteria for production sites in-use for oil and gas operations. Approved Closure Criteria are reproduced below.

Table 1. Closure Criteria for Production Sites In-use where Depth to Water > 100 ft bgs	
Chloride	20,000 mg/kg
TPH (GRO+DRO+MRO)	2,500 mg/kg
GRO+DRO	1,000 mg/kg
BTEX	50 mg/kg
Benzene	10 mg/kg

bgs – below ground surface

TPH – total petroleum hydrocarbons, GRO – gas range organics, DRO – diesel range organics, MRO – motor oil range organics

BTEX – benzene, toluene, ethylbenzene and xylenes

Environmental Site Remediation Work Plan

Please refer to the Terracon Closure Report¹ submitted on February 27, 2025, for complete discussion of remedial activities, soil sampling laboratory results, and site maps. The attached email (Attachment 2) from NMOCD confirms the depth-to-water approval of greater than 100 feet bgs.

Proposed Final Remediation

Remediation for final closure requires additional removal of impacted material in the upper 4 feet. Reclamation of areas no longer in-use, shall be reclaimed per 19.15.29.D where, "...reclamation must contain a minimum of four feet of non-waste containing, uncontaminated, earthen material with chloride concentrations less than 600 mg/kg...".

Depth to groundwater was determined by desktop review. The nearest active well to the site is a monitoring well located within 0.5 miles of the site near the Paschal Ranch House. The well was gauged on February 18, 2020 by R.T. Hicks Consultants and depicted a static water level of 134.9 feet below ground surface. The location and data for the well along with historical hydrologic data in the area are exhibited in Appendix C. Applying final reclamation closure criteria to the previously approved in-use closure criteria defines the Final Reclamation Closure Criteria as:

Table 2. Final Reclamation Closure Criteria		
0-4 feet bgs (19.15.29.13)	Constituent	Limit
	Chloride	600 mg/kg
	TPH (GRO+DRO+MRO)	100 mg/kg
	BTEX	50 mg/kg
	Benzene	10 mg/kg
Below 4 feet bgs, where DTGW > 100 feet (Table I of 19.15.29.12)	Chloride	20,000 mg/kg
	TPH (GRO+DRO+MRO)	2,500 mg/kg
	GRO+DRO	1,000 mg/kg
	BTEX	50 mg/kg
	Benzene	10 mg/kg

bgs – below ground surface

DTGW – depth to groundwater

TPH – total petroleum hydrocarbons, GRO – gas range organics, DRO – diesel range organics, MRO – motor oil range organics

BTEX – benzene, toluene, ethylbenzene and xylenes

The in-use reclamation areas presented on Figure 2 are adapted from the February 2025 closure report to show areas requiring additional excavation. The depths noted are the excavation depths from the 2023 remediation. The backfilled material will be removed, stockpiled, and laboratory analyzed for constituents of concern listed in the Final Reclamation Closure Criteria (Table 2). Soil samples obtained from the stockpiled material will represent an area no greater than 100 cubic yards. Stockpiled soils meeting the Final Reclamation Closure Criteria will be re-used as backfill material during final surface reclamation.

Areas identified requiring additional excavation will be excavated from the depth identified on Figure 2 to a depth of 4 feet or until soil concentrations meet the most stringent Closure Criteria, whichever is less. Material below 4 feet will be excavated if soil concentrations exceed Table I of 19.15.29 New Mexico Administrative Code (NMAC) where depth-to-water is greater than 100 feet bgs (reproduced in Table 2 above). During final remediation activities, the horizontal extent will be delineated, and remediated as necessary, to meet the Final Reclamation Closure Criteria, satisfying NMOCD's request for additional horizontal delineation as stated in the February 2023 closure report denial response.

¹ https://wwwapps.emnrd.nm.gov/OCD/OCDPermitting/SupportingDocuments/app/app_374311_1062733.pdf

Environmental Site Remediation Work Plan

All excavated material, including stockpiled soil, exceeding the the Final Reclamation Closure Criteria will be hauled off-site for proper disposal.

Sampling Size Variance Request

Solaris respectfully asks NMOCD for variance approval where each composite sample is not representative of more than 400 sq ft. The requested sample grid size will provide equal protection of fresh water, public health, and the environment according to the "10% Condition"² that states sample sizes should be no more than 10% of the population (release area) as long as it does not exceed 1,000³ samples. Applying the 10% Condition, a sample size of 400 sq ft meets this condition.

Population (sq ft area)	Sample Size (grid sq. ft.)	No. of Samples	% of Population (sq. ft. area)	Representative of Population	Meets 10% Condition
36,654	200	183	0.5%	99.5%	Yes
36,654	300	122	0.8%	99.2%	Yes
36,654	400	92	1%	99%	Yes
36,654	500	73	1%	99%	Yes
36,654	1,000	37	3%	97%	Yes
36,654	3,665	10	10%	90%	Yes
36,654	10,000	4	27%	73%	No

The proposed 400 sq ft sampling size statistically provides equal significance of laboratory results as a 200 sq ft sampling size for the constituents listed in Table 1 of 19.15.29 NMAC, where:

- The 10% Condition is met
- The proposed sample grid size represents 99% of the population (release area)

Confirmation Sampling

After excavation is complete, confirmatory samples will be collected from the base and walls per approved sample size area. Soil samples will be submitted for laboratory analysis to confirm Final Reclamation Closure Criteria concentrations are met. Additional excavation will be performed and bases and/or walls resampled, as necessary, for areas exceeding Final Reclamation Closure Criteria.

Final Surface Reclamation

Upon confirmation sampling, the excavation will be backfilled with stockpiled material meeting the most stringent closure criteria and clean, non-waste containing, uncontaminated, earthen material sourced locally. The surface will be reclaimed as pasture land.

Surface reclamation will follow an approved State Land Office (SLO) reclamation plan and include the following:

- Site will be contoured to match surrounding topography
- Contain a minimum of 1 foot of suitable material to establish vegetation
- Seeded with "Coarse Sites Seed Mixture" for gravelly loam soils per SLO guidelines
- Monitor the site annually and re-seed as necessary to ensure successful revegetation

² <https://web.ma.utexas.edu/users/mks/M358KInstr/TenPctCond.pdf>

³ <https://tools4dev.org/resources/how-to-choose-a-sample-size/>

Environmental Site Remediation Work Plan

- Submit a final revegetation report when a uniform vegetative cover has been established that reflects a life-form ratio of plus or minus 50% of pre-disturbance levels and a total percent plant cover of at least 70% of pre-disturbance levels, excluding noxious weeds

An estimated 3,227 cubic yards of additional impacted material will be excavated and disposed at an NMOCD approved facility. Remediation shall be completed within 45 days of NMOCD and SLO work plan approval. A closure report will be submitted to NMOCD within 45 days of final remediation and reclamation completion.

Should you have any questions or concerns, please do not hesitate to contact the below.

Chance Dixon

5/20/2025

Chance Dixon, B.Sc.

Date

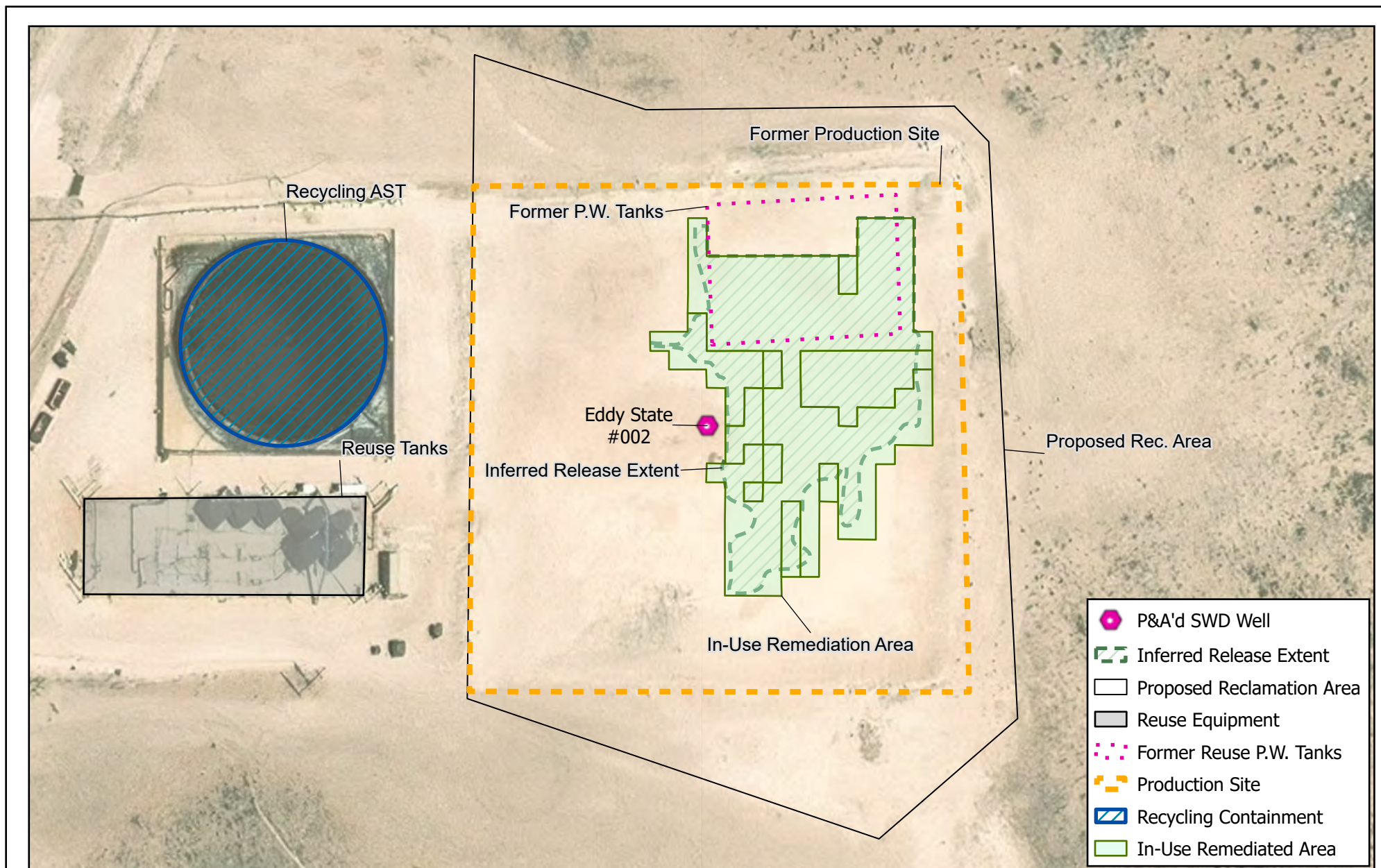
PROJECT MANAGER, REPORT REVIEW

Attachments

Attachment 1. Proposed Excavation Figures

Attachment 2. NMOCD Correspondence for Depth to Groundwater

APPENDIX A – Proposed Excavation Figures



Map Center:
Lat/Long: 32.070371°N, 103.955211°W
Date: Apr 30/25
NAD 1983 StatePlane New Mexico East FIPS 3001 Feet



Site Map
Eddy State Water Treatment and Reuse Facility
Eddy State #002

Figure:

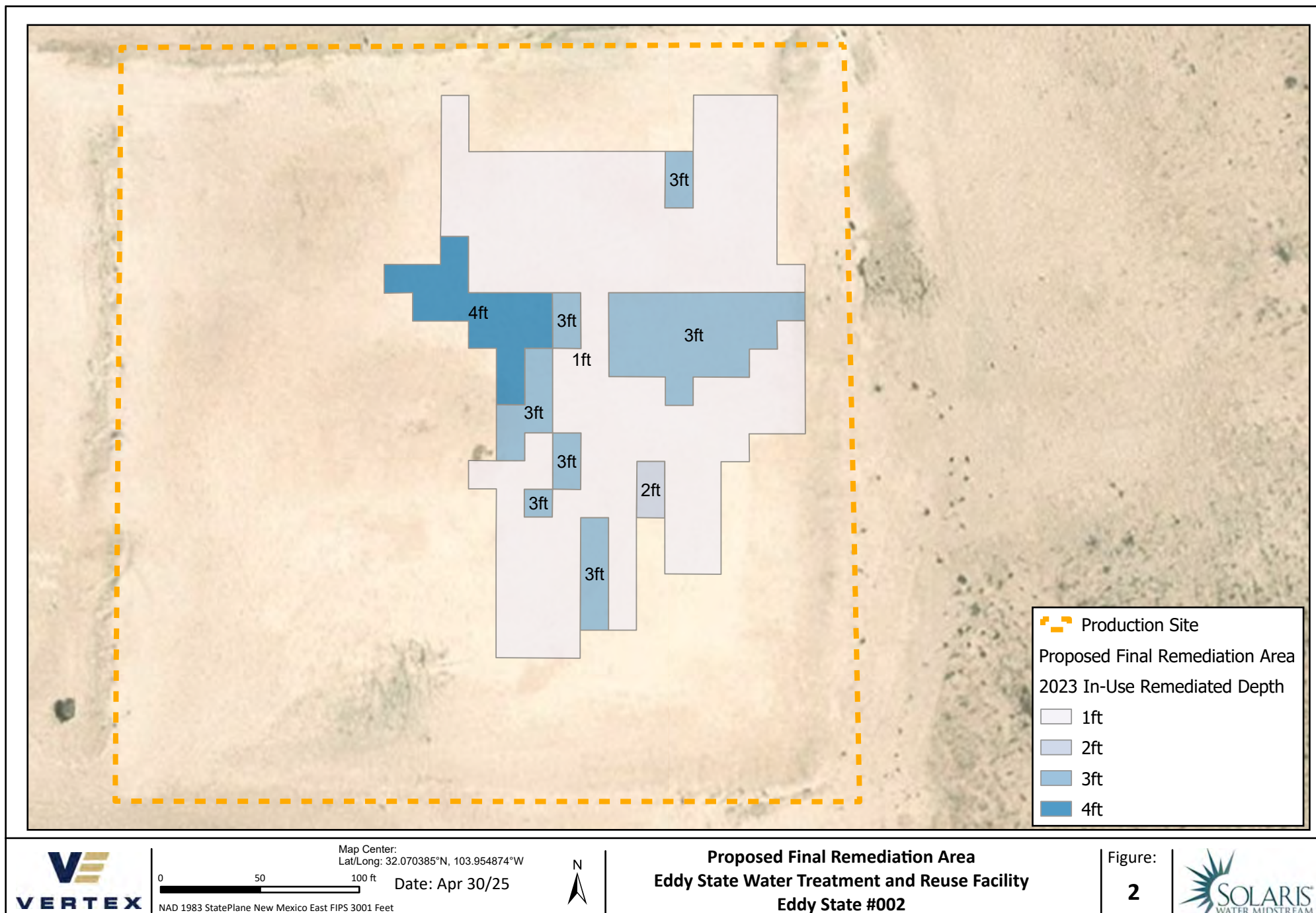
1



Geospatial data presented in this figure may be derived from external sources and Vertex does not assume any liability for inaccuracies. This figure is intended for reference use only and is not certified for legal, survey, or engineering purposes.

Note: Georeferenced image from Esri, 2025. Site features from GPS, Vertex, 2025.

VERSATILITY. EXPERTISE.



APPENDIX B – Seeding Field Report with Photographs

From: [Hamlet, Robert, EMNRD](#)
To: [Chance Dixon](#)
Cc: [Jeffery Cook](#)
Subject: RE: [EXTERNAL] Solaris - Eddy State #2 Remediation - nAPP2308926215
Date: Thursday, May 1, 2025 8:21:01 AM

Caution: This email is from an external sender. Please take care when clicking links or opening attachments. When in doubt, contact your IT Department

Hey Chance,

We should be able to accept the water well gauged in 2020 within 0.5 miles of the site. Please, include the location/info/data in the report. Honestly, no one at the OCD should be approving groundwater depth determinations almost 2 miles from the site location. If you have some correspondence agreeing to that just include it in the report and we will honor it. I believe if the release occurred before 12/1/2024, that medium karst would not be considered "unstable" ground. Only releases that occurred after 12/1/2024 fall into this category. If you are looking at reclaiming the pad, the top 4 feet would need to meet reclamation standards (100 mg/kg TPH and 600 mg/kg Chlorides). Below 4 feet would revert back to the OCD Spill Rule for >100' depth to groundwater.

Let me know if this didn't answer your question. Thanks

Robert Hamlet • Environmental Specialist - Advanced

Environmental Bureau

EMNRD - Oil Conservation Division

506 W. Texas Ave. | Artesia, NM 88210

575.909.0302 | robert.hamlet@emnrd.nm.gov

<http://www.emnrd.state.nm.us/OCD/>



From: Chance Dixon <cdixon@vertexresource.com>
Sent: Wednesday, April 30, 2025 1:42 PM
To: Hamlet, Robert, EMNRD <Robert.Hamlet@emnrd.nm.gov>
Cc: Jeffery Cook <jeffery.cook@ariswater.com>
Subject: [EXTERNAL] Solaris - Eddy State #2 Remediation - nAPP2308926215

CAUTION: This email originated outside of our organization. Exercise caution prior to clicking on links or opening attachments.

Good morning Robert,

Hope you have been doing well since the last time we spoke. I wanted to reach out to you in regards of a remediation that I am working on closing out on behalf of Solaris Water Midstream. The release was initially being worked by a past consultant and has been passed on to Vertex. The release closure had received multiple denials due to the requirements for taking it to >100 DTGW standards for releases on pad. From what we gathered in the Incident Events section, it appears that criteria was being accepted using data from an exploratory borehole that was drilled approximately 1.8 miles away, but we did not see any correspondence from OCD in their reports that fully approved that.

The reason we feel this is important is that the site sits in a medium karst zone and the first closure denial that insinuated the >100 standards would be accepted took place on 3/11/2024, before the new medium karst rule took effect. We are now trying to take it to reclamation standards as it is not an appropriate time to take it to >100 standards on pad and defer the rest for later because the well is now P&A'd. Vertex is seeking clarity on if that criteria was accepted by OCD as we would like to write a new remediation plan using it for greater than and equal to four feet bgs in the excavation. The remediation plan will be submitted to the OCD portal.

We also found data for a water well that was gauged in 2020 within 0.5 miles of the site that will now be used in the rem plan. Please see below.



We would very much appreciate your guidance on this matter and are more than glad to jump on a call to discuss.

Thank you,

Chance Dixon B.Sc.
Project Manager

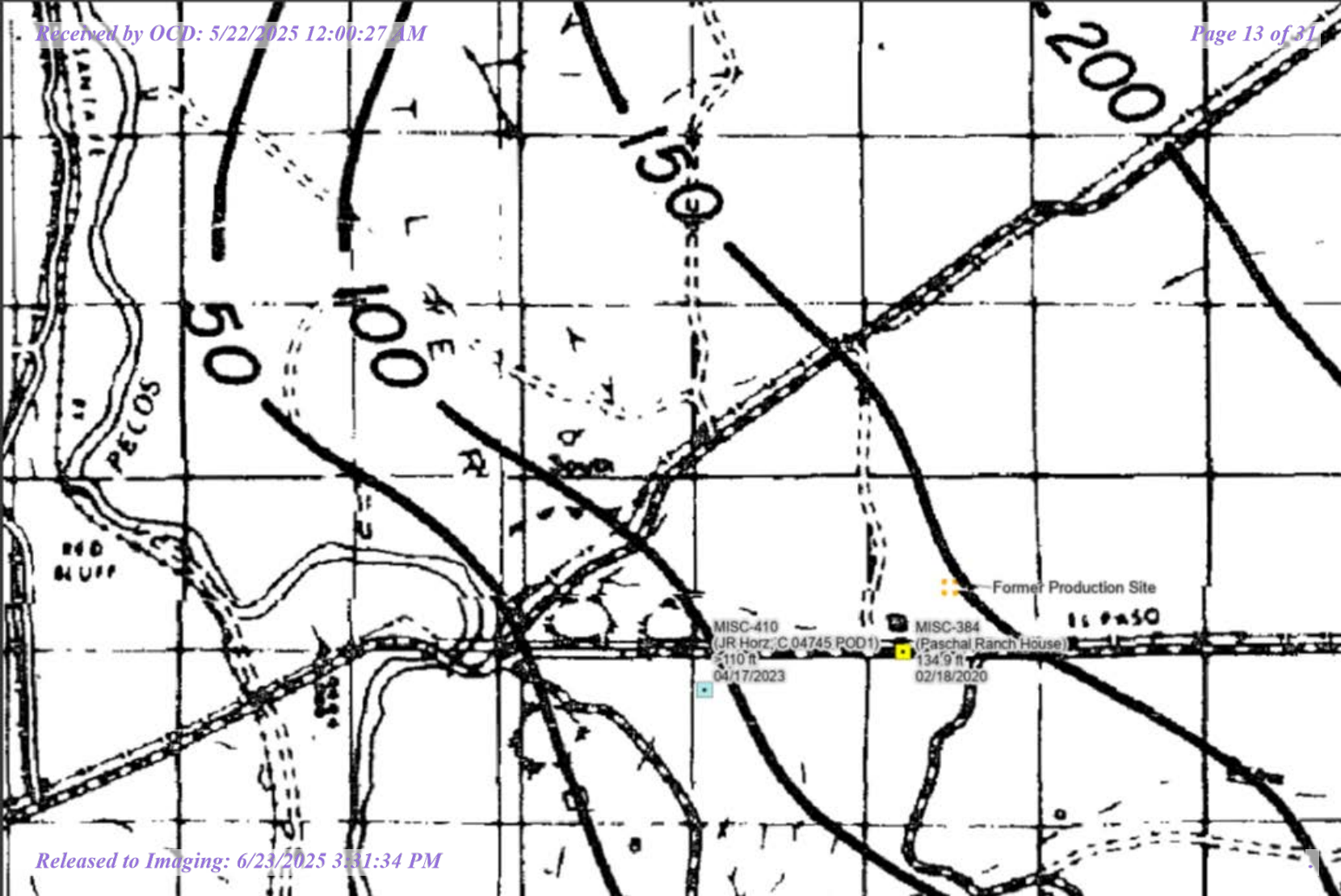
Vertex Resource Services Inc.
3101 Boyd Drive,
Carlsbad, NM 88220

C 575.988.1472

www.vertex.ca
[Connect with LinkedIn](#)

Confidentiality Notice: This message and any attachments are solely for the intended recipient and may contain confidential or privileged information. If you are not the intended recipient, any disclosure, copying, use, or distribution of the information included in this message and any attachment is prohibited. If you have received this communication in error, please notify us by reply email and immediately and permanently delete this message and any attachments. Thank you.

APPENDIX C – Closure Criteria Research Documentation

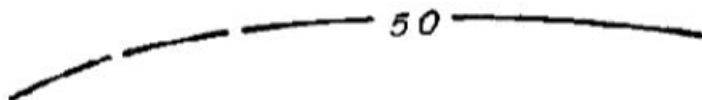


EXPLANATION

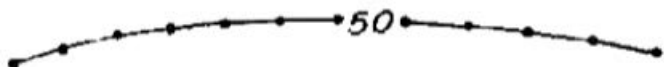
Scale 1:126,720



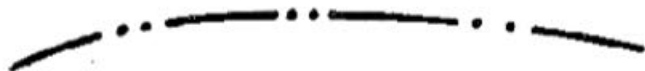
1 inch=2 miles



Depth-to-water contour shows depth to water below land-surface datum. Dashed where approximate. Contour interval is variable.



Depth-to-water contour indicating perched-water levels.



Basin boundary.

feat_type Stock Well

Received by OCIPage 15 of 312: 6/23/2025 3:04 PM

feat_date 02/18/2020

source RTHicks - M Buechter

DTW_ft 134.9

gwelev 2876.1

elev_amsl 3011

TD_ft -99

Released to Imaging: 6/23/2025 3:04 PM

aka_name Paschal Ranch House





Eddy State #002 Watercourse 1,433ft



April 7, 2025

Wetlands

- Estuarine and Marine Deepwater
- Estuarine and Marine Wetland

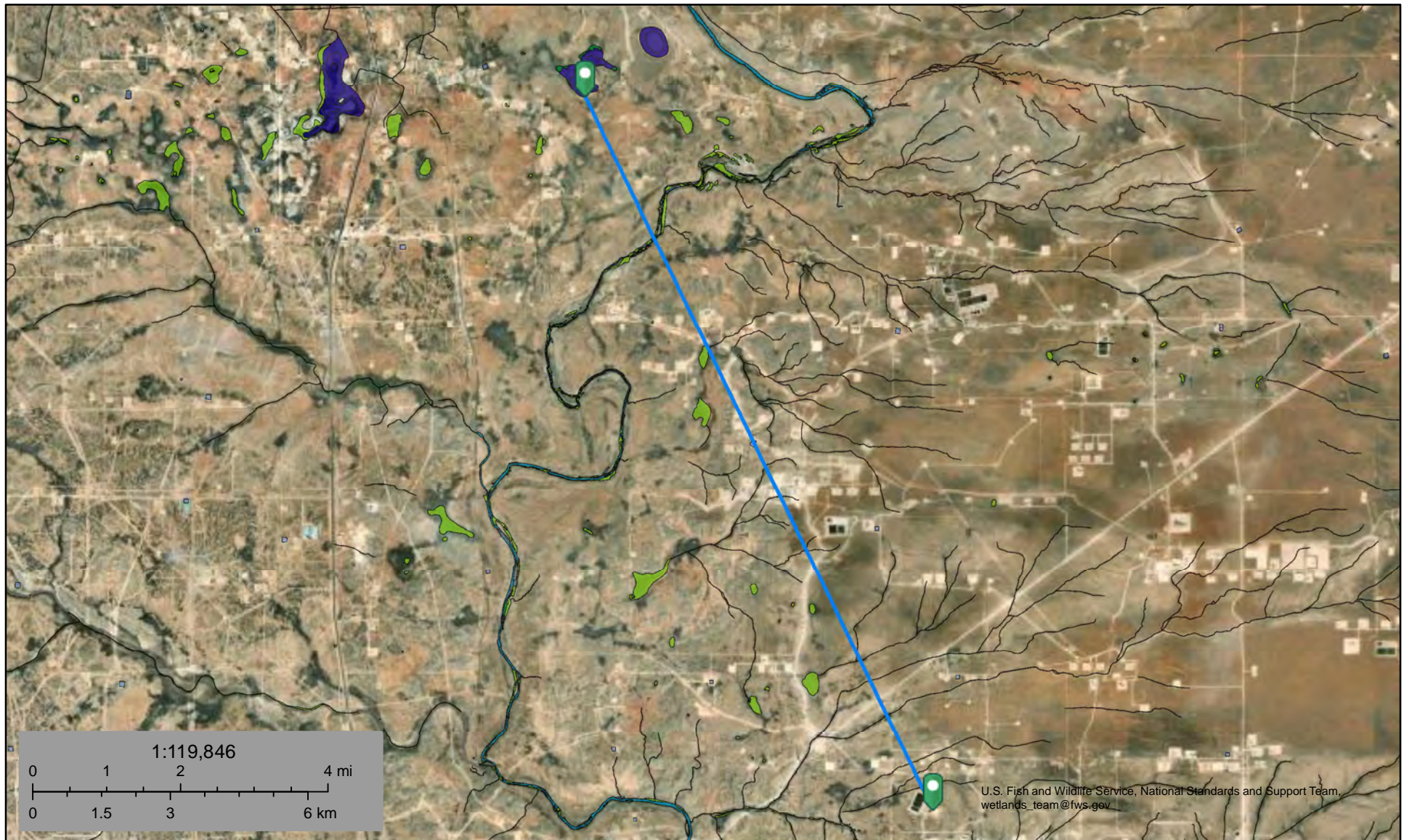
- Freshwater Emergent Wetland
- Freshwater Forested/Shrub Wetland
- Freshwater Pond

- Lake
- Other
- Riverine

This map is for general reference only. The US Fish and Wildlife Service is not responsible for the accuracy or currentness of the base data shown on this map. All wetlands related data should be used in accordance with the layer metadata found on the Wetlands Mapper web site.



Eddy State #002 Lake 47,965ft



April 7, 2025

Wetlands

- Estuarine and Marine Deepwater
- Estuarine and Marine Wetland

- Freshwater Emergent Wetland
- Freshwater Forested/Shrub Wetland
- Freshwater Pond

- Lake
- Other
- Riverine


This map is for general reference only. The US Fish and Wildlife Service is not responsible for the accuracy or currentness of the base data shown on this map. All wetlands related data should be used in accordance with the layer metadata found on the Wetlands Mapper web site.


Eddy State #002

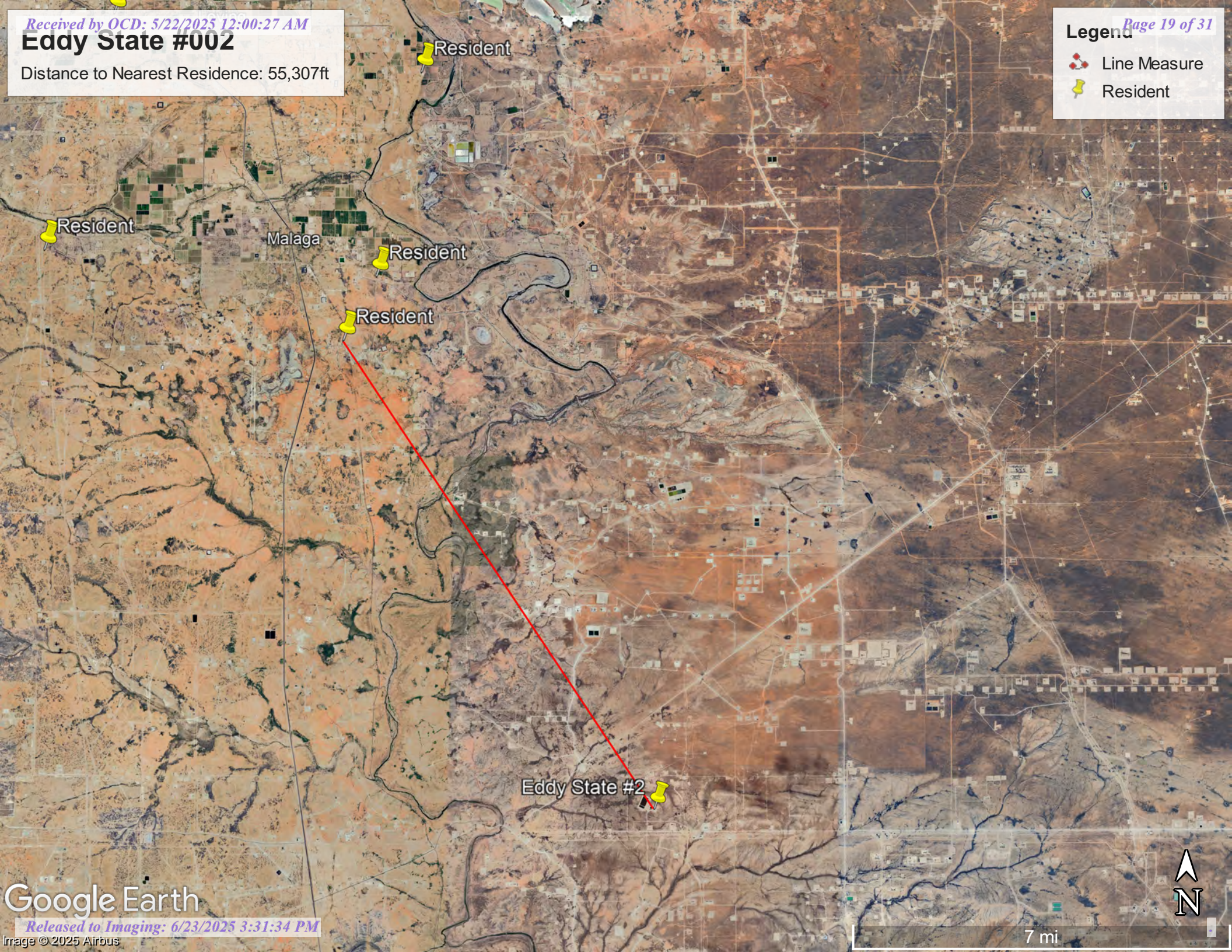
Distance to Nearest Residence: 55,307ft

Page 19 of 31

Legend

 Line Measure

 Resident



7 mi

Active & Inactive Points of Diversion
(with Ownership Information)

(R=POD has been replaced and no longer serves this file, C=the file is closed)										(quarters are 1=NW 2=NE 3=SW 4=SE) (quarters are smallest to largest)					(NAD83 UTM in meters)				(meters)	
WR File Nbr	Sub basin	Use	Diversion	Owner	County	POD Number	Well Tag	Code	Grant	Source	q64	q16	q4	Sec	Tws	Range	X	Y	Map	Distance
C 04755	CUB	MON	0.000	DEVON ENERGY	ED	C 04755 POD1	NA			SE	NW	SW	12	26S	29E	599787.4	3546971.4		2,067.2	
C 04720	CUB	EXP	0.000	DEVON ENERGY	ED	C 04720 POD1	NA			SE	NW	SW	12	26S	29E	599807.3	3546968.8		2,080.3	
					ED	C 04720 POD4	NA			SE	NW	SW	12	26S	29E	599812.4	3546955.0		2,094.6	
C 04755	CUB	MON	0.000	DEVON ENERGY	ED	C 04755 POD2	NA			SE	NW	SW	12	26S	29E	599857.0	3546955.1		2,119.4	
C 04720	CUB	EXP	0.000	DEVON ENERGY	ED	C 04720 POD2	NA			SE	NW	SW	12	26S	29E	599835.7	3546932.1		2,126.5	
					ED	C 04720 POD3	NA			SE	NW	SW	12	26S	29E	599835.7	3546932.1		2,126.5	
					ED	C 04720 POD5	NA			SE	NW	SW	12	26S	29E	599840.0	3546920.4		2,138.7	
C 04755	CUB	MON	0.000	DEVON ENERGY	ED	C 04755 POD3	NA			SE	NW	SW	12	26S	29E	599747.8	3546862.3		2,139.0	
C 04720	CUB	EXP	0.000	DEVON ENERGY	ED	C 04720 POD6	NA			SE	NW	SW	12	26S	29E	599857.7	3546880.9		2,181.4	
C 04705	CUB	MON	0.000	DEVON ENERGY	ED	C 04705 POD1	NA			NE	NW	NE	35	25S	29E	598866.5	3551191.8		2,496.8	
C 04745	CUB	MON	0.000	SOLARIS WATER MIDSTREAM	ED	C 04745 POD1	NA			SW	NW	NW	10	26S	29E	596298.4	3547727.4		2,554.8	
C 04473	CUB	MON	0.000	XTO ENERGY INC	ED	C 04473 POD1	NA			SW	SE	SW	33	25S	29E	595018.5	3549768.7		3,793.4	
C 04558	CUB	MON	0.000	XTO ENERGY INC	ED	C 04558 POD1	NA			SW	SE	SW	23	25S	29E	598353.7	3553039.4		4,346.5	
C 01360	CUB	IND	0.000	EL PASO NATURAL GAS	ED	C 01360				Shallow	SE	SW	SW	05	26S	30E	602996.6	3548152.0		4,372.2
C 03448	C	PRO	0.000	DEVON ENERGY CORP.	ED	C 01360				Shallow	SE	SW	SW	05	26S	30E	602996.6	3548152.0		4,372.2
C 03449	C	PRO	0.000	OGX RESOURCES	ED	C 01360				Shallow	SE	SW	SW	05	26S	30E	602996.6	3548152.0		4,372.2
C 01361	CUB	IND	0.000	EL PASO NATURAL GAS	ED	C 01361				Shallow	SW	SE	SW	05	26S	30E	603240.4	3548157.5		4,613.5
C 01354	CUB	SRO	0.000	RECOVERY WATER COMPANY	ED	C 01354 X-3				NE	NW	SW	23	26S	29E	598323.2	3543837.6		4,877.6	
C 03481	C	PRO	0.000	ROSS-BRANTLEY JOINT VENTURE	ED	C 01354 X-3				NE	NW	SW	23	26S	29E	598323.2	3543837.6		4,877.6	
C 01569	C	STK	3.000	WALTER B PASCHAL	ED	C 01569				SE	SE	NW	22	26S	29E	596978.0	3544093.0 *		4,907.6	

Record Count: 20

Filters Applied:

UTM Filters (in meters):
Easting: 598659.30
Northing: 3548703.61
Radius: 5000.0

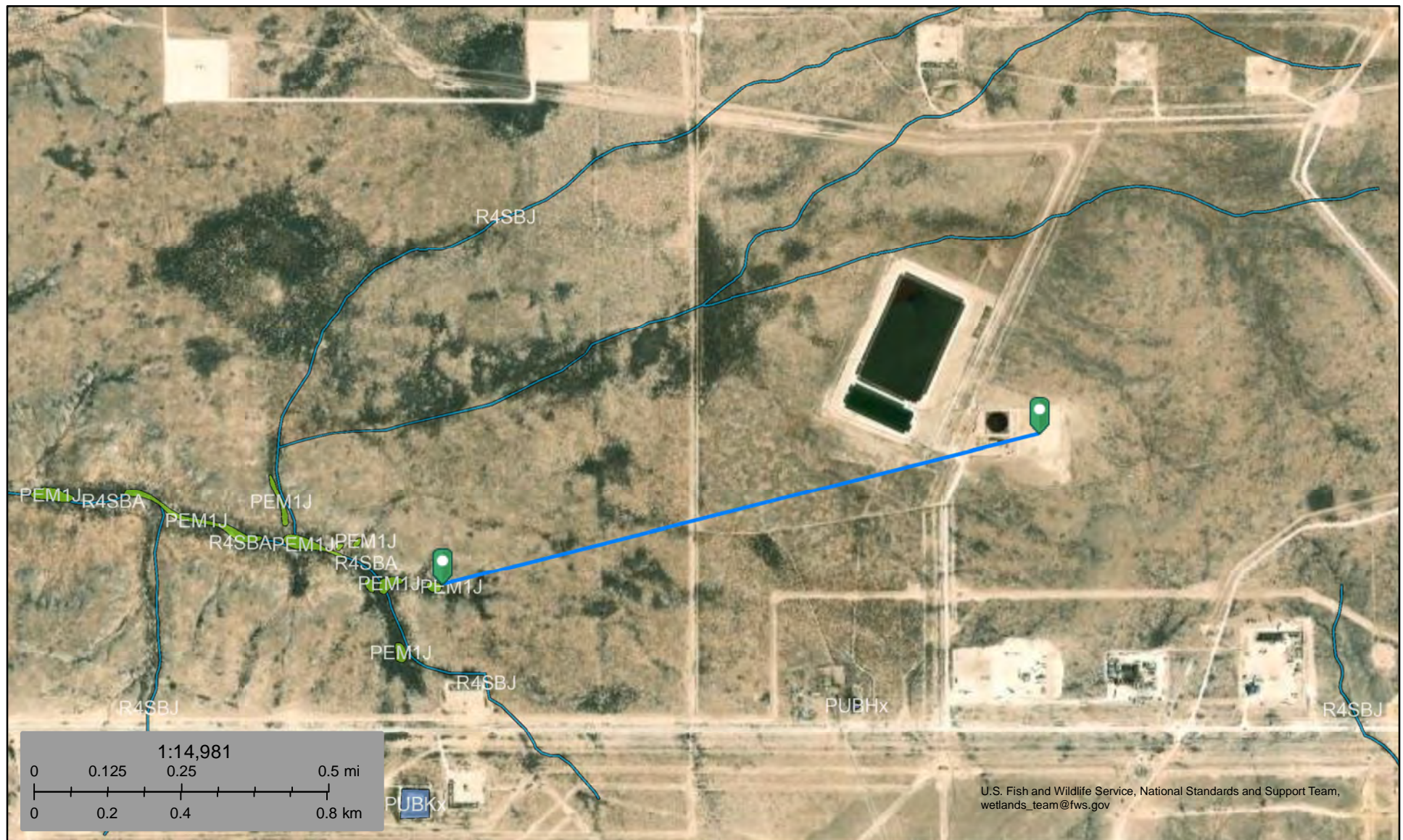
Sorted By: Distance

* UTM location was derived from PLSS - see Help

The data is furnished by the NMOSE/ISC and is accepted by the recipient with the expressed understanding that the OSE/ISC make no warranties, expressed or implied, concerning the accuracy, completeness, reliability, usability, or suitability for any particular purpose of the data.



Eddy State #002 Wetland 4,682ft



April 7, 2025

Wetlands

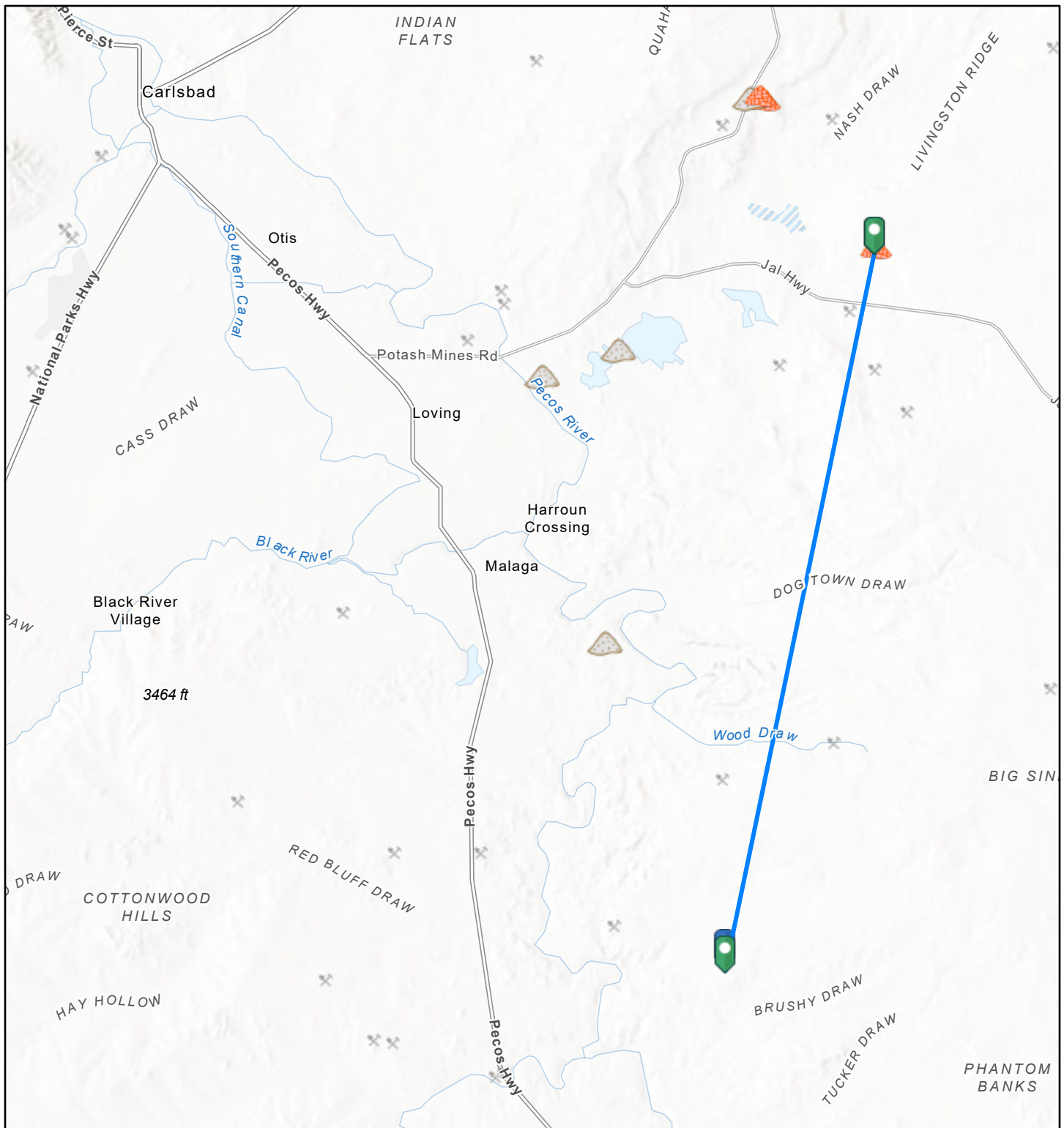
- Estuarine and Marine Deepwater
- Estuarine and Marine Wetland

- Freshwater Emergent Wetland
- Freshwater Forested/Shrub Wetland
- Freshwater Pond

- Lake
- Other
- Riverine

This map is for general reference only. The US Fish and Wildlife Service is not responsible for the accuracy or currentness of the base data shown on this map. All wetlands related data should be used in accordance with the layer metadata found on the Wetlands Mapper web site.

Eddy State #002 Mine 106,016ft



4/7/2025, 1:18:16 PM

1:288,895

Registered Mines



Aggregate, Stone etc.



Aggregate, Stone etc.



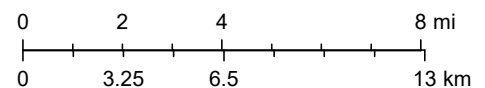
Potash



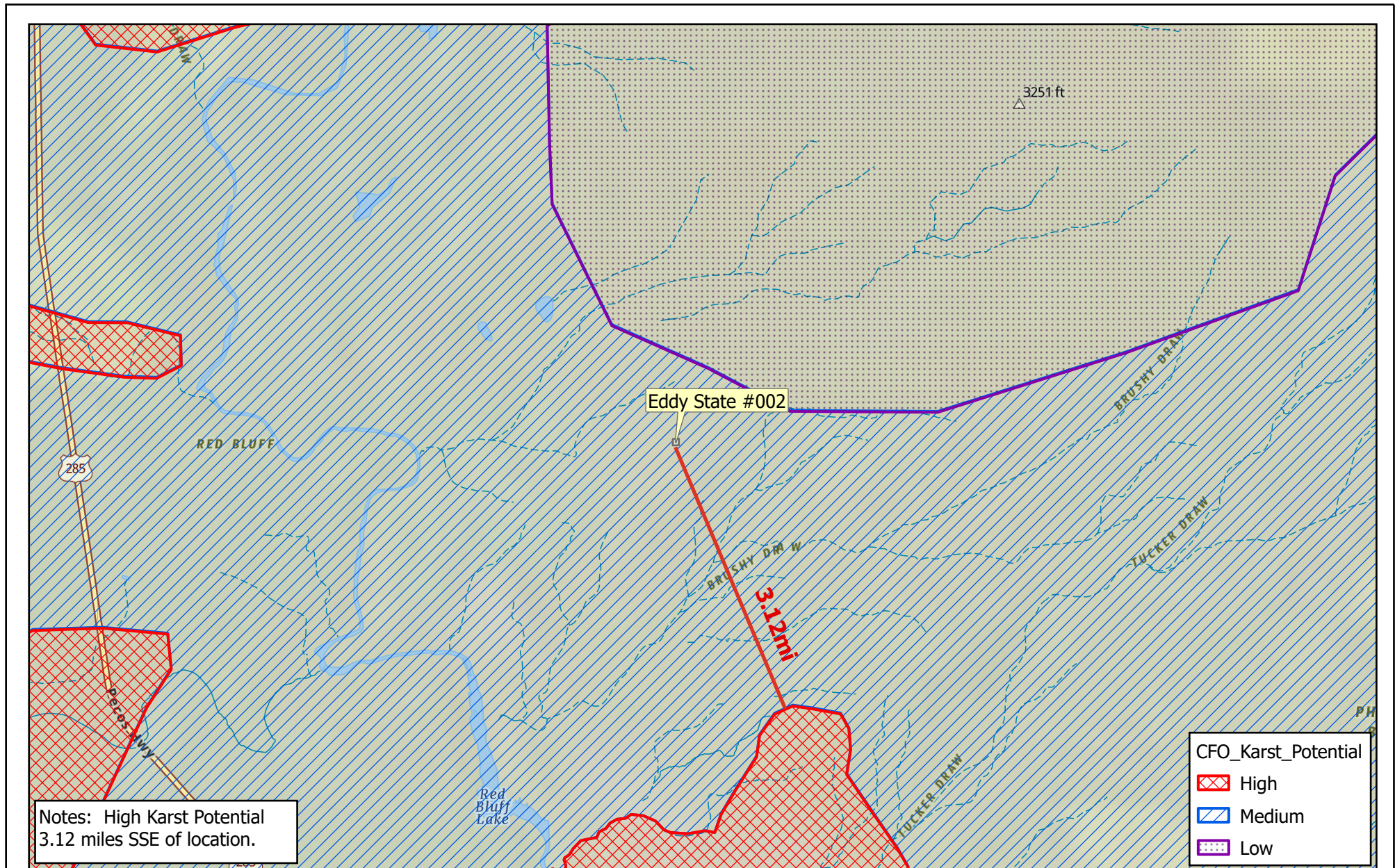
Aggregate, Stone etc.



Salt



Esri, NASA, NGA, USGS, Sources: Esri, TomTom, Garmin, FAO, NOAA, USGS, © OpenStreetMap contributors, and the GIS User Community



0 1 2 Miles
NAD 1983 StatePlane New Mexico East FIPS 3001 Feet

Map Center:
Lat/Long: 32.069624°N, 103.950197°W
Date: Apr 08/25



Karst Potential
Eddy State #002

PLATE:
8



Geospatial data presented in this figure may be derived from external sources and Vertex does not assume any liability for inaccuracies. This figure is intended for reference use only and is not certified for legal, survey, or engineering purposes.




Note: Georeferenced image from Esri, 2025. Site features from GPS, Vertex, 2025.

VERSATILITY. EXPERTISE.

Eddy State #002

Distance to FEMA Flood Zone A: 2,392ft

Legend

-  Eddy State #002
-  FEMA Flood Zone A
-  Line Measure



Sante Fe Main Office
Phone: (505) 476-3441

General Information
Phone: (505) 629-6116

Online Phone Directory
<https://www.emnrd.nm.gov/ocd/contact-us>

State of New Mexico
Energy, Minerals and Natural Resources
Oil Conservation Division
1220 S. St Francis Dr.
Santa Fe, NM 87505

QUESTIONS

Action 465694

QUESTIONS

Operator: SOLARIS WATER MIDSTREAM, LLC 9651 Katy Fwy Houston, TX 77024	OGRID: 371643
	Action Number: 465694
	Action Type: [C-141] Site Char./Remediation Plan C-141 (C-141-v-Plan)

QUESTIONS

Prerequisites	
Incident ID (n#)	nAPP2308926215
Incident Name	NAPP2308926215 EDDY STATE WATER RECYCLING @ 0
Incident Type	Produced Water Release
Incident Status	Remediation Plan Approved
Incident Facility	[FV2105730365] EDDY STATE WATER TREATMENT AND REUSE FACILITY

Location of Release Source

Please answer all the questions in this group.

Site Name	EDDY STATE WATER RECYCLING
Date Release Discovered	03/29/2023
Surface Owner	State

Incident Details

Please answer all the questions in this group.

Incident Type	Produced Water Release
Did this release result in a fire or is the result of a fire	No
Did this release result in any injuries	No
Has this release reached or does it have a reasonable probability of reaching a watercourse	No
Has this release endangered or does it have a reasonable probability of endangering public health	No
Has this release substantially damaged or will it substantially damage property or the environment	No
Is this release of a volume that is or may with reasonable probability be detrimental to fresh water	No

Nature and Volume of Release

Material(s) released, please answer all that apply below. Any calculations or specific justifications for the volumes provided should be attached to the follow-up C-141 submission.

Crude Oil Released (bbls) Details	Not answered.
Produced Water Released (bbls) Details	Cause: Human Error Pipeline (Any) Produced Water Released: 30 BBL Recovered: 5 BBL Lost: 25 BBL.
Is the concentration of chloride in the produced water >10,000 mg/l	Yes
Condensate Released (bbls) Details	Not answered.
Natural Gas Vented (Mcf) Details	Not answered.
Natural Gas Flared (Mcf) Details	Not answered.
Other Released Details	Not answered.
Are there additional details for the questions above (i.e. any answer containing Other, Specify, Unknown, and/or Fire, or any negative lost amounts)	Not answered.

Sante Fe Main Office
Phone: (505) 476-3441

General Information
Phone: (505) 629-6116

Online Phone Directory
<https://www.emnrd.nm.gov/ocd/contact-us>

State of New Mexico
Energy, Minerals and Natural Resources
Oil Conservation Division
1220 S. St Francis Dr.
Santa Fe, NM 87505

QUESTIONS, Page 2

Action 465694

QUESTIONS (continued)

Operator: SOLARIS WATER MIDSTREAM, LLC 9651 Katy Fwy Houston, TX 77024	OGRID: 371643
	Action Number: 465694
	Action Type: [C-141] Site Char./Remediation Plan C-141 (C-141-v-Plan)

QUESTIONS

Nature and Volume of Release (continued)	
Is this a gas only submission (i.e. only significant Mcf values reported)	No, according to supplied volumes this does not appear to be a "gas only" report.
Was this a major release as defined by Subsection A of 19.15.29.7 NMAC	Yes
Reasons why this would be considered a submission for a notification of a major release	From paragraph A. "Major release" determine using: (1) an unauthorized release of a volume, excluding gases, of 25 barrels or more.
<i>With the implementation of the 19.15.27 NMAC (05/25/2021), venting and/or flaring of natural gas (i.e. gas only) are to be submitted on the C-129 form.</i>	

Initial Response

The responsible party must undertake the following actions immediately unless they could create a safety hazard that would result in injury.

The source of the release has been stopped	True
The impacted area has been secured to protect human health and the environment	True
Released materials have been contained via the use of berms or dikes, absorbent pads, or other containment devices	True
All free liquids and recoverable materials have been removed and managed appropriately	True
If all the actions described above have not been undertaken, explain why	Not answered.

Per Paragraph (4) of Subsection B of 19.15.29.8 NMAC the responsible party may commence remediation immediately after discovery of a release. If remediation has begun, please prepare and attach a narrative of actions to date in the follow-up C-141 submission. If remedial efforts have been successfully completed or if the release occurred within a lined containment area (see Subparagraph (a) of Paragraph (5) of Subsection A of 19.15.29.11 NMAC), please prepare and attach all information needed for closure evaluation in the follow-up C-141 submission.

I hereby certify that the information given above is true and complete to the best of my knowledge and understand that pursuant to OCD rules and regulations all operators are required to report and/or file certain release notifications and perform corrective actions for releases which may endanger public health or the environment. The acceptance of a C-141 report by the OCD does not relieve the operator of liability should their operations have failed to adequately investigate and remediate contamination that pose a threat to groundwater, surface water, human health or the environment. In addition, OCD acceptance of a C-141 report does not relieve the operator of responsibility for compliance with any other federal, state, or local laws and/or regulations.

I hereby agree and sign off to the above statement	Name: Lauren Bean Title: Senior Engineering Tech Email: lauren.bean@ariswater.com Date: 05/21/2025
--	---

Sante Fe Main Office
Phone: (505) 476-3441

General Information
Phone: (505) 629-6116

Online Phone Directory
<https://www.emnrd.nm.gov/ocd/contact-us>

State of New Mexico
Energy, Minerals and Natural Resources
Oil Conservation Division
1220 S. St Francis Dr.
Santa Fe, NM 87505

QUESTIONS, Page 3

Action 465694

QUESTIONS (continued)

Operator: SOLARIS WATER MIDSTREAM, LLC 9651 Katy Fwy Houston, TX 77024	OGRID: 371643
	Action Number: 465694
	Action Type: [C-141] Site Char./Remediation Plan C-141 (C-141-v-Plan)

QUESTIONS

Site Characterization	
<i>Please answer all the questions in this group (only required when seeking remediation plan approval and beyond). This information must be provided to the appropriate district office no later than 90 days after the release discovery date.</i>	
What is the shallowest depth to groundwater beneath the area affected by the release in feet below ground surface (ft bgs)	Between 100 and 500 (ft.)
What method was used to determine the depth to ground water	Direct Measurement
Did this release impact groundwater or surface water	No
What is the minimum distance, between the closest lateral extents of the release and the following surface areas:	
A continuously flowing watercourse or any other significant watercourse	Between 1000 (ft.) and ½ (mi.)
Any lakebed, sinkhole, or playa lake (measured from the ordinary high-water mark)	Greater than 5 (mi.)
An occupied permanent residence, school, hospital, institution, or church	Greater than 5 (mi.)
A spring or a private domestic fresh water well used by less than five households for domestic or stock watering purposes	Between 1000 (ft.) and ½ (mi.)
Any other fresh water well or spring	Greater than 5 (mi.)
Incorporated municipal boundaries or a defined municipal fresh water well field	Greater than 5 (mi.)
A wetland	Between ½ and 1 (mi.)
A subsurface mine	Greater than 5 (mi.)
An (non-karst) unstable area	Between 1 and 5 (mi.)
Categorize the risk of this well / site being in a karst geology	Medium
A 100-year floodplain	Between 1000 (ft.) and ½ (mi.)
Did the release impact areas not on an exploration, development, production, or storage site	No

Remediation Plan	
<i>Please answer all the questions that apply or are indicated. This information must be provided to the appropriate district office no later than 90 days after the release discovery date.</i>	
Requesting a remediation plan approval with this submission	Yes
<i>Attach a comprehensive report demonstrating the lateral and vertical extents of soil contamination associated with the release have been determined, pursuant to 19.15.29.11 NMAC and 19.15.29.13 NMAC.</i>	
Have the lateral and vertical extents of contamination been fully delineated	Yes
Was this release entirely contained within a lined containment area	No
Soil Contamination Sampling: (Provide the highest observable value for each, in milligrams per kilograms.)	
Chloride (EPA 300.0 or SM4500 Cl B)	10200
TPH (GRO+DRO+MRO) (EPA SW-846 Method 8015M)	112
GRO+DRO (EPA SW-846 Method 8015M)	112
BTEX (EPA SW-846 Method 8021B or 8260B)	0
Benzene (EPA SW-846 Method 8021B or 8260B)	0
<i>Per Subsection B of 19.15.29.11 NMAC unless the site characterization report includes completed efforts at remediation, the report must include a proposed remediation plan in accordance with 19.15.29.12 NMAC, which includes the anticipated timelines for beginning and completing the remediation.</i>	
On what estimated date will the remediation commence	07/01/2025
On what date will (or did) the final sampling or liner inspection occur	07/01/2025
On what date will (or was) the remediation complete(d)	08/01/2025
What is the estimated surface area (in square feet) that will be reclaimed	30500
What is the estimated volume (in cubic yards) that will be reclaimed	5500
What is the estimated surface area (in square feet) that will be remediated	30500
What is the estimated volume (in cubic yards) that will be remediated	5500
<i>These estimated dates and measurements are recognized to be the best guess or calculation at the time of submission and may (be) change(d) over time as more remediation efforts are completed.</i>	
<i>The OCD recognizes that proposed remediation measures may have to be minimally adjusted in accordance with the physical realities encountered during remediation. If the responsible party has any need to significantly deviate from the remediation plan proposed, then it should consult with the division to determine if another remediation plan submission is required.</i>	

Sante Fe Main Office
Phone: (505) 476-3441

General Information
Phone: (505) 629-6116

Online Phone Directory
<https://www.emnrd.nm.gov/ocd/contact-us>

State of New Mexico
Energy, Minerals and Natural Resources
Oil Conservation Division
1220 S. St Francis Dr.
Santa Fe, NM 87505

QUESTIONS, Page 4

Action 465694

QUESTIONS (continued)

Operator: SOLARIS WATER MIDSTREAM, LLC 9651 Katy Fwy Houston, TX 77024	OGRID: 371643
	Action Number: 465694
	Action Type: [C-141] Site Char./Remediation Plan C-141 (C-141-v-Plan)

QUESTIONS

Remediation Plan (continued)	
<i>Please answer all the questions that apply or are indicated. This information must be provided to the appropriate district office no later than 90 days after the release discovery date.</i>	
This remediation will (or is expected to) utilize the following processes to remediate / reduce contaminants:	
<i>(Select all answers below that apply.)</i>	
(Ex Situ) Excavation and off-site disposal (i.e. dig and haul, hydrovac, etc.)	Yes
Which OCD approved facility will be used for off-site disposal	LEA LAND LANDFILL [fEEM0112342028]
OR which OCD approved well (API) will be used for off-site disposal	Not answered.
OR is the off-site disposal site, to be used, out-of-state	No
OR is the off-site disposal site, to be used, an NMED facility	No
(Ex Situ) Excavation and on-site remediation (i.e. On-Site Land Farms)	No
(In Situ) Soil Vapor Extraction	No
(In Situ) Chemical processing (i.e. Soil Shredding, Potassium Permanganate, etc.)	No
(In Situ) Biological processing (i.e. Microbes / Fertilizer, etc.)	No
(In Situ) Physical processing (i.e. Soil Washing, Gypsum, Disking, etc.)	No
Ground Water Abatement pursuant to 19.15.30 NMAC	No
OTHER (Non-listed remedial process)	No
<i>Per Subsection B of 19.15.29.11 NMAC unless the site characterization report includes completed efforts at remediation, the report must include a proposed remediation plan in accordance with 19.15.29.12 NMAC, which includes the anticipated timelines for beginning and completing the remediation.</i>	
I hereby certify that the information given above is true and complete to the best of my knowledge and understand that pursuant to OCD rules and regulations all operators are required to report and/or file certain release notifications and perform corrective actions for releases which may endanger public health or the environment. The acceptance of a C-141 report by the OCD does not relieve the operator of liability should their operations have failed to adequately investigate and remediate contamination that pose a threat to groundwater, surface water, human health or the environment. In addition, OCD acceptance of a C-141 report does not relieve the operator of responsibility for compliance with any other federal, state, or local laws and/or regulations.	
I hereby agree and sign off to the above statement	Name: Lauren Bean Title: Senior Engineering Tech Email: lauren.bean@ariswater.com Date: 05/21/2025
<i>The OCD recognizes that proposed remediation measures may have to be minimally adjusted in accordance with the physical realities encountered during remediation. If the responsible party has any need to significantly deviate from the remediation plan proposed, then it should consult with the division to determine if another remediation plan submission is required.</i>	

Sante Fe Main Office
Phone: (505) 476-3441

General Information
Phone: (505) 629-6116

Online Phone Directory
<https://www.emnrd.nm.gov/ocd/contact-us>

State of New Mexico
Energy, Minerals and Natural Resources
Oil Conservation Division
1220 S. St Francis Dr.
Santa Fe, NM 87505

QUESTIONS, Page 5

Action 465694

QUESTIONS (continued)

Operator: SOLARIS WATER MIDSTREAM, LLC 9651 Katy Fwy Houston, TX 77024	OGRID: 371643
	Action Number: 465694
	Action Type: [C-141] Site Char./Remediation Plan C-141 (C-141-v-Plan)

QUESTIONS

Deferral Requests Only	
Only answer the questions in this group if seeking a deferral upon approval this submission. Each of the following items must be confirmed as part of any request for deferral of remediation.	
Requesting a deferral of the remediation closure due date with the approval of this submission	No

Sante Fe Main Office
Phone: (505) 476-3441

General Information
Phone: (505) 629-6116

Online Phone Directory
<https://www.emnrd.nm.gov/ocd/contact-us>

State of New Mexico
Energy, Minerals and Natural Resources
Oil Conservation Division
1220 S. St Francis Dr.
Santa Fe, NM 87505

QUESTIONS, Page 6

Action 465694

QUESTIONS (continued)

Operator: SOLARIS WATER MIDSTREAM, LLC 9651 Katy Fwy Houston, TX 77024	OGRID: 371643
	Action Number: 465694
	Action Type: [C-141] Site Char./Remediation Plan C-141 (C-141-v-Plan)

QUESTIONS

Sampling Event Information	
Last sampling notification (C-141N) recorded	386328
Sampling date pursuant to Subparagraph (a) of Paragraph (1) of Subsection D of 19.15.29.12 NMAC	04/25/2024
What was the (estimated) number of samples that were to be gathered	4
What was the sampling surface area in square feet	29000

Remediation Closure Request

Only answer the questions in this group if seeking remediation closure for this release because all remediation steps have been completed.

Requesting a remediation closure approval with this submission	No
--	----

Sante Fe Main Office
Phone: (505) 476-3441

General Information
Phone: (505) 629-6116

Online Phone Directory
<https://www.emnrd.nm.gov/ocd/contact-us>

State of New Mexico
Energy, Minerals and Natural Resources
Oil Conservation Division
1220 S. St Francis Dr.
Santa Fe, NM 87505

CONDITIONS

Action 465694

CONDITIONS

Operator: SOLARIS WATER MIDSTREAM, LLC 9651 Katy Fwy Houston, TX 77024	OGRID: 371643
	Action Number: 465694
	Action Type: [C-141] Site Char./Remediation Plan C-141 (C-141-v-Plan)

CONDITIONS

Created By	Condition	Condition Date
rhamlet	A remediation plan has already been conditionally approved for this incident. Please review the approved conditions that were sent to the operator on 6/18/2025. They are also located in the "Incident Events" section of the incident page in OCD Permitting.	6/23/2025