

A-2-3-7 EXT LINE LEAK

Remediation Summary & Closure Report Addendum

NMOCD Incident No. nAPP2331222132

UL "J", Sec. 19, T17S, R35E

32.81748, -103.49475

Lea County, New Mexico

May 7, 2025



PREPARED ON BEHALF OF

DCP Operating Company, LP
6900 E. Layton Ave, Suite 900
Denver, Colorado 80237



PREPARED BY

Tasman, Inc.
2620 W. Marland Blvd.
Hobbs, NM 88240



May 7, 2025

DCP Operating Company, LP
6900 E. Layton Ave, Suite 900
Denver, Colorado 80237

Attn: Mr. Steve Weathers
Email: Stephen.weathers@p66.com

Re: Remediation Summary & Closure Report
A-2-3-7 EXT Line Leak
UL "J", Section 19, Township 17 South, Range 35 East
Lea County, New Mexico
NMOCD Incident No. nAPP2331222132
Tasman Project No. 6563

Dear Mr. Weathers,

Tasman, Inc. (Tasman) is pleased to submit this Remediation Summary and Closure Addendum for the above referenced site. Tasman conducted additional soil excavation and confirmation sampling activities outlined in the variance request and sampling plan approved by Mr. Velez with the New Mexico Oil Conservation Division (NMOCD) on April 9, 2025.

Tasman appreciates the opportunity to provide environmental services to DCP Operating Company, LP. Should you have any questions or require additional information, please do not hesitate to contact the undersigned.

Sincerely,
Tasman, Inc.

Brett Dennis
Senior Project Manager
bdennis@tasman-geo.com

Kyle Norman
SW Regional Manager
knorman@tasman-geo.com

TABLE OF CONTENTS

1.0 INTRODUCTION	1
1.1 Site Description	1
1.2 Site Chronology	1
2.0 SITE CHARACTERISTICS	2
3.0 REMEDIATION ACTION LEVELS	2
3.1 Reclamation Levels	2
4.0 SOIL SAMPLING PROCEDURES	3
4.1 Soil Sampling Procedures for Laboratory Analysis	3
4.2 Soil Analytical Methods	3
5.0 SUMMARY OF ACTIVITIES	3
5.1 Resampling Activities	3
5.2 Confirmation Data Evaluation	3
6.0 RESTORATION AND RECLAMATION	4
7.0 SITE CLOSURE REQUEST	4

Figures

Figure 1 – Site Location Map

Figure 2 – Excavation Overview Map

Tables

Table 1 – Soil Sample Analytical Summary – Confirmation Soil Samples

Appendix A – NMOCD Notifications

Appendix B – Photographic Log

Appendix C – Certified Laboratory Analytical Reports

1.0 INTRODUCTION

Tasman, Inc. (Tasman) is pleased to submit this Remediation Summary and Closure Addendum for the A-2-3-7 EXT Line Leak (site) on behalf of DCP Operating Company, LP (DCP), documenting the results of field activities conducted in accordance with the NMOCD approved variance request and sampling plan.

1.1 Site Description

The site is located in Unit Letter "J" of Section 19, Township 17 South, Range 35 East in Lea County, New Mexico. The release occurred from the A-2-3-7 EXT produced water pipeline. The release occurred on New Mexico State Land Office (NMSLO) property.

1.2 Site Chronology

On November 7, 2023, the A-2-3-7 EXT pipeline was discovered by DCP personnel to have failed due to corrosion. On November 8, 2023, DCP provided notice of release to the NMOCD portal and to the NMSLO by email on November 10, 2023. The release resulted in the loss of approximately 8 barrels (bbls) of produced water to the surrounding environmental media. DCP personnel shut in the pipeline to isolate the release. The line was later repaired and returned to service. Approximately 1 bbl produced water was recovered.

From October 29 to November 26, 2024, impacted soils were excavated using heavy equipment. Final remedial excavations measured approximately 82 feet long by 58 feet wide ranging from 2 to 17 feet bgs. A total of 1,792 cubic yards of excavated material was exported to Lea Land, LLC landfill in Lea County, New Mexico. Confirmation samples were collected from the remedial excavations from November 8, 2024, to January 8, 2025.

On January 16, 2025 a *Remediation Summary & Closure Report* was submitted to the NMOCD via online portal summarizing remedial activities and analytical results. The closure request was denied due to insufficient sampling notifications to the NMOCD.

On April 9, 2025, Tasman requested a variance request via email of the 48-hour sampling notification along with planned sampling activities to address deficiencies from the January closure request. The variance request and sampling plan was approved by Mr. Velez with the NMOCD on the same day.

A copy of the NMOCD notifications and correspondence are provided in Appendix A.

2.0 SITE CHARACTERISTICS

Site characteristics have been detailed in previous submittals to the NMOCD. Please see the *Remediation Summary & Closure Report*, dated January 16, 2025.

3.0 REMEDIATION ACTION LEVELS

NMOCD assessment and cleanup levels for hydrocarbon and produced water releases are based on depth to groundwater and proximity to sensitive receptors as established in NMAC 19.15.29. Based on the site characteristics provided in Section 2.0 of the January closure request, Action Levels for a site with a depth to groundwater between 50 and 100 feet were utilized; these Action Levels are as follows:

Constituent	Remediation Action Level
Chloride	10,000 mg/kg
TPH (GRO+DRO+MRO)	2,500 mg/kg
TPH (GRO+DRO)	1,000 mg/kg
BTEX	50 mg/kg
Benzene	10 mg/kg

TPH – total petroleum hydrocarbons

DRO – diesel range organics

BTEX – benzene, toluene, ethylbenzene, total xylenes

GRO – gasoline range organics

MRO – motor/lube oil range organics

mg/kg – milligrams per kilogram

3.1 Reclamation Levels

NMAC 19.15.29.13(D) codifies, and the *Procedures for Implementation of the Spill Rule*, dated September 6, 2019, clarifies that the top four feet of the remediated area should be non-waste containing. Therefore, the NMOCD Reclamation Standards are applied to the top four feet of any area impacted by a release that is not located within an active production facility. NMOCD Reclamation Standards are as follows:

Constituent	Reclamation Standard
Chloride	600 mg/kg
TPH (GRO+DRO+MRO)	100 mg/kg
BTEX	50 mg/kg
Benzene	10 mg/kg

4.0 SOIL SAMPLING PROCEDURES

4.1 Soil Sampling Procedures for Laboratory Analysis

The collection of soil samples for laboratory analysis was conducted in accordance with NMOCD criteria and generally approved industry standards. Collected soil samples were placed in laboratory provided containers, properly labeled, and preserved on ice pending delivery under a chain of custody form to Cardinal Laboratory in Hobbs, New Mexico.

4.2 Soil Analytical Methods

Each soil sample was analyzed using Environmental Protection Agency (EPA) methods or other NMOCD-approved methods. Laboratory analytical methods are as follows:

- Chloride – EPA Method SM4500.
- Total Petroleum Hydrocarbons (TPH) – gasoline, diesel, and motor/lube oil range organics (GRO+DRO+MRO) – EPA Method 8015M Extended.
- Benzene, toluene, ethylbenzene, and total xylenes (BTEX) – EPA Method 8021B.

5.0 SUMMARY OF ACTIVITIES

5.1 Resampling Activities

On April 10 and 18, 2025, Tasman provided a 48-hour mobilization notice to the NMOCD Portal (Appendix A). On April 17, Tasman collected a total of 2 confirmation soil samples from the sidewalls of the backfilled excavation using hand augers. Samples were collected as a five-point composite representing no more than 400 square feet (ft²). Attempts were made to collect confirmation samples from the floor of the backfilled excavation, however, due to the nature of backfill material, personnel were unsuccessful.

Tasman returned to the site on April 22, 2025, to excavate backfilled material using a backhoe and collect confirmation soil samples from the base of the excavation. Tasman collected a total of 2 confirmation soil samples from the base of the excavation and samples were collected as a five-point composite representing no more than 400 ft².

5.2 Confirmation Data Evaluation

Concentrations of benzene, total BTEX, and total TPH were all below laboratory reporting limits in all collected soil samples.

Concentrations of chlorides in collected soil samples ranged from 48.0 milligrams per kilogram (mg/kg) to 112 mg/kg.

A summary of soil analytical results is provided as Table 1 and certified laboratory analytical reports are provided in Appendix C. The attached Figure 2 illustrates excavation extents and confirmation sample locations.

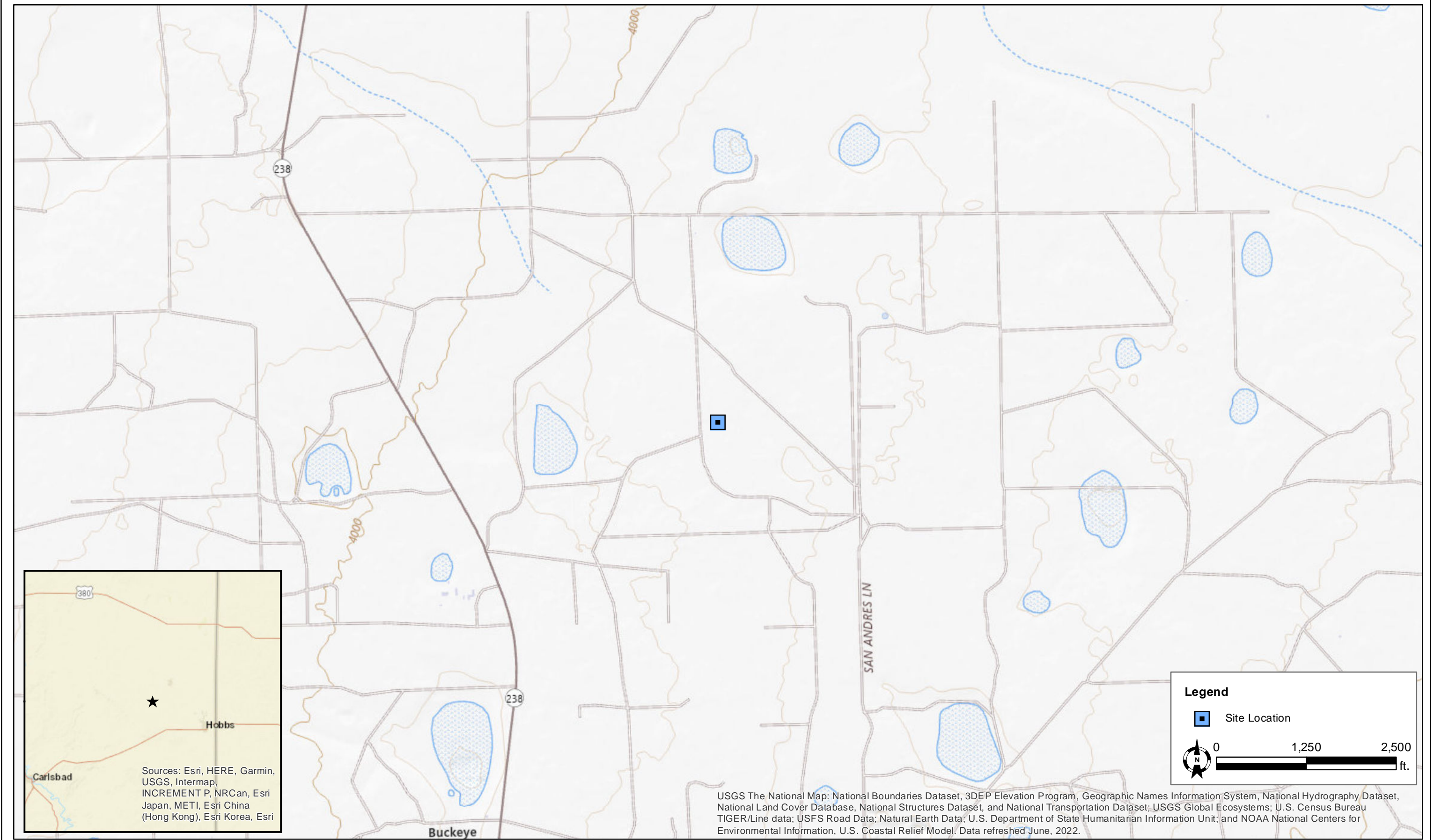
6.0 RESTORATION AND RECLAMATION

Areas affected by the release and associated remediation activities were restored to the condition which existed prior to the release to the maximum extent possible. After the excavation was backfilled, Tasman returned to the site on January 8, 2025, to collect samples from backfill material. One sample, Backfill 1, was collected from imported caliche while Backfill 2 was collected from imported top soil. The concentrations of chlorides exhibited by collected samples were 48.0 mg/kg and 16.0 mg/kg respectively. Concentrations of BTEX and total TPH were both below laboratory reporting limits. A Reclamation Plan will be provided under separate cover for NMSLO approval.

7.0 SITE CLOSURE REQUEST

Based on laboratory analytical results from soil samples collected during the confirmation sampling events, impacted soil within the release area has been remediated below the applicable NMOCD Action Levels in accordance with NMAC 19.15.29. As such, Tasman, on behalf of DCP, respectfully requests that the site be granted closure.

Figures



DATE:	April 2025
DESIGNED BY:	K. Stark
DRAWN BY:	L. Flores



Tasman, Inc.
2620 W. Marland Blvd
Hobbs, NM 88240

DCP Operating Company, LP
A-2-3-5 Ext - nAPP2331222132
UL "J" Sec. 19, T17S, R35E
Lea County, New Mexico

Site Location Map

Figure
1



DATE:	May 2025
DESIGNED BY:	K. Stark
DRAWN BY:	K. Stark



Tasman, Inc.
2620 W. Marland Blvd.
Hobbs, NM 88240

DCP Operating Compnay, LP
A-2-3-5 Ext 2 Line - nAPP2312333253
UL "J", Sec. 19, T17S, R35E
Lea County, New Mexico

Excavation Overview Map

Figure 2

Table

TABLE 1
SOIL ANALYTICAL SUMMARY
DCP Operating Company, LP
A-2-3-7 EXT Line Leak - nAPP2331222132

Sample ID	Sample Depth (bgs)	Sample Date	Soil Status	PID (ppm)	Field Chloride (mg/kg)	Benzene (mg/kg)	Total BTEX ¹ (mg/kg)	TPH ² (mg/kg)				Chloride ³ (mg/kg)
								GRO	DRO	MRO	TOTAL	
FL-1A	4.5'	4/22/2025	In-Situ	0.7	138	<0.050	<0.300	<10.0	<10.0	<10.0	<10.0	<16.0
FL-2A	4.5'		In-Situ	1.7	232	<0.050	<0.300	<10.0	<10.0	<10.0	<10.0	<16.0
W-1A	---	4/17/2025	In-Situ	---	---	<0.050	<0.300	<10.0	<10.0	<10.0	<10.0	112
W-2A	---		In-Situ	---	---	<0.050	<0.300	<10.0	<10.0	<10.0	<10.0	48.0
NMOCD Reclamation Standards ⁴ (Applicable for soils less than 4 ft. below grade surface)				N/A	N/A	10	50	N/A			100	600
NMOCD Action Levels ⁵				N/A	N/A	10	50	1,000		N/A	2,500	10,000

Notes:

1. BTEX = Benzene, toluene, ethylbenzene, and total xylenes by EPA method 8021B
2. TPH = Total petroleum hydrocarbons analyzed by method EPA 8015M (GRO/DRO/MRO)
3. Chloride - Analyzed by EPA method SM4500
4. New Mexico Administrative Code (NMAC) 19.15.29.13(D) - Restoration, Reclamation, and Re-vegetation (Reclamation for areas no longer in use) for soils extending to 4 ft. below grade surface (bgs).
5. New Mexico Oil Conservation Division (NMOCD) Remediation and Delineation Standards (NMAC 19.15.29.12(N))

Bold values denote concentrations above laboratory RL

Red values denote concentrations above NMOCD Action Levels

BGS = Below ground surface

GRO = Gasoline range organics

DRO = Diesel range organics

MRO = Motor/lube oil range organics

PID = Photoionization detector

--- = Sample was not analyzed for this analyte

<RL = The analyte was not detected above the laboratory reporting limit (RL)

N/A = Not applicable

Appendix A – NMOCD Notifications

From: [Velez, Nelson, EMNRD](#)
To: [Kyle Norman](#)
Cc: [Weathers, Stephen](#); [Brett Dennis](#); [Kendon Stark](#)
Subject: Re: [EXTERNAL] nAPP2331222132 - A-2-3-7 Line Leak - Variance Request
Date: Wednesday, April 9, 2025 3:23:15 PM
Attachments: [image001.png](#)
[Outlook-kbmxmv4b.png](#)

Good afternoon Kyle,

Thanks for the correspondence. Your variance request toward 19.15.29.12D (1a) NMAC for specifically samples FL-8 @ 17 ft bgs, FL-9 @ 17 ft bgs, FL-10 @ 17 ft bgs, & FL-3A @ 4.5 ft bgs collected on 11/11/2024 is approved.

OCD accepts the resampling FL-1A @ 4.5 ft bgs, FL-2A @ 4.5 ft bgs, W-1A, & W-2A as stated.

Please keep a copy of this communication for inclusion within the appropriate report submittal.

The OCD requires a copy of all correspondence related to remedial activities be included in all proposals and/or final closure reports. Correspondence required to be included in reports may include, but not limited to, notifications for liner inspections, sample events, spill/release/fire, and request for time extensions or variances.

Regards,

Nelson Velez • Environmental Specialist - Adv
Environmental Bureau | EMNRD - Oil Conservation Division
1000 Rio Brazos Road | Aztec, NM 87410
(505) 469-6146 | nelson.velez@emnrd.nm.gov
<http://www.emnrd.nm.gov/oed>



From: Kyle Norman <knorman@tasman-geo.com>
Sent: Wednesday, April 9, 2025 2:36 PM
To: Velez, Nelson, EMNRD <Nelson.Velez@emnrd.nm.gov>
Cc: Weathers, Stephen <Stephen.Weathers@p66.com>; Brett Dennis <bdennis@tasman-geo.com>; Kendon Stark <KStark@tasman-geo.com>

Subject: [EXTERNAL] nAPP2331222132 - A-2-3-7 Line Leak - Variance Request

CAUTION: This email originated outside of our organization. Exercise caution prior to clicking on links or opening attachments.

Mr. Velez,

Tasman has conducted remediation activities at the A-2-3-7 Line Leak (Incident No. nAPP2331222132) with a total of 20 separate sample locations. Laboratory analytical results from samples collected during remediation activities show that TPH, BTEX, and Chlorides are all below NMOCD Action Levels.

Tasman respectfully requests a variance of the 48-hour sampling notification as outlined in 19.15.29.12 D(1)(a) NMAC for samples collected on November 11, 2024. This request applies specifically to the following samples:

- FL-8 @ 17 ft bgs
- FL-9 @ 17 ft bgs
- FL-10 @ 17 ft bgs
- FL-3A @4.5 ft bgs

Further excavation to accommodate additional sampling enables the possibility of negatively impacting the structural integrity of the on-site pipeline. Additionally, the mobilization of equipment would likely disturb germinating and/or sprouting vegetation in the previously backfilled area. Laboratory results confirm that collected samples demonstrate constituents of concern below applicable NMOCD Action Levels.

Tasman also plans to resample the locations below originally sampled on November 11 and November 26, 2024, as 5-point composite samples not to represent greater than 400 ft², following submission of the appropriate 48-hour sample notification.

- FL-1A @ 4.5 ft bgs
- FL-2A @ 4.5 ft bgs
- W-1A
- W-2A

An analytical table, figure of excavation extents and sample locations, can be found attached to this message.

Best regards,

Kyle Norman
SW Regional Manager

Sante Fe Main Office
Phone: (505) 476-3441

General Information
Phone: (505) 629-6116

Online Phone Directory
<https://www.emnrd.nm.gov/oecd/contact-us>

State of New Mexico
Energy, Minerals and Natural Resources
Oil Conservation Division
1220 S. St Francis Dr.
Santa Fe, NM 87505

QUESTIONS

Action 450889

QUESTIONS

Operator: DCP OPERATING COMPANY, LP 2331 Citywest Blvd Houston, TX 77042	OGRID: 36785
	Action Number: 450889
	Action Type: [NOTIFY] Notification Of Sampling (C-141N)

QUESTIONS

Prerequisites	
Incident ID (n#)	nAPP2331222132
Incident Name	NAPP2331222132 A-2-3-7 EXT PIPELINE @ 0
Incident Type	Produced Water Release
Incident Status	Remediation Plan Approved
Incident Facility	[fAPP2123031660] DCP SE NM Gathering System

Location of Release Source	
Site Name	A-2-3-7 EXT PIPELINE
Date Release Discovered	11/07/2023
Surface Owner	State

Sampling Event General Information	
<i>Please answer all the questions in this group.</i>	
What is the sampling surface area in square feet	1,700
What is the estimated number of samples that will be gathered	4
Sampling date pursuant to Subparagraph (a) of Paragraph (1) of Subsection D of 19.15.29.12 NMAC	04/17/2025
Time sampling will commence	08:00 AM
Please provide any information necessary for observers to contact samplers	Kendon Stark: 806-317-4707
Please provide any information necessary for navigation to sampling site	GPS: 32.81748, -103.49475

Sante Fe Main Office
Phone: (505) 476-3441

General Information
Phone: (505) 629-6116

Online Phone Directory
<https://www.emnrd.nm.gov/oed/contact-us>

State of New Mexico
Energy, Minerals and Natural Resources
Oil Conservation Division
1220 S. St Francis Dr.
Santa Fe, NM 87505

CONDITIONS

Action 450889

CONDITIONS

Operator: DCP OPERATING COMPANY, LP 2331 Citywest Blvd Houston, TX 77042	OGRID: 36785
	Action Number: 450889
	Action Type: [NOTIFY] Notification Of Sampling (C-141N)

CONDITIONS

Created By	Condition	Condition Date
knorman	Failure to notify the OCD of sampling events including any changes in date/time per the requirements of 19.15.29.12.D.(1).(a) NMAC, may result in the remediation closure samples not being accepted.	4/10/2025

Sante Fe Main Office
Phone: (505) 476-3441

General Information
Phone: (505) 629-6116

Online Phone Directory
<https://www.emnrd.nm.gov/oecd/contact-us>

State of New Mexico
Energy, Minerals and Natural Resources
Oil Conservation Division
1220 S. St Francis Dr.
Santa Fe, NM 87505

QUESTIONS

Action 453358

QUESTIONS

Operator: DCP OPERATING COMPANY, LP 2331 Citywest Blvd Houston, TX 77042	OGRID: 36785
	Action Number: 453358
	Action Type: [NOTIFY] Notification Of Sampling (C-141N)

QUESTIONS

Prerequisites	
Incident ID (n#)	nAPP2331222132
Incident Name	NAPP2331222132 A-2-3-7 EXT PIPELINE @ 0
Incident Type	Produced Water Release
Incident Status	Remediation Plan Approved
Incident Facility	[fAPP2123031660] DCP SE NM Gathering System

Location of Release Source	
Site Name	A-2-3-7 EXT PIPELINE
Date Release Discovered	11/07/2023
Surface Owner	State

Sampling Event General Information	
Please answer all the questions in this group.	
What is the sampling surface area in square feet	700
What is the estimated number of samples that will be gathered	2
Sampling date pursuant to Subparagraph (a) of Paragraph (1) of Subsection D of 19.15.29.12 NMAC	04/22/2025
Time sampling will commence	08:30 AM
Please provide any information necessary for observers to contact samplers	Kendon Stark: 806-317-4707
Please provide any information necessary for navigation to sampling site	GPS: 32.81748, -103.49475

Sante Fe Main Office
Phone: (505) 476-3441

General Information
Phone: (505) 629-6116

Online Phone Directory
<https://www.emnrd.nm.gov/ocd/contact-us>

State of New Mexico
Energy, Minerals and Natural Resources
Oil Conservation Division
1220 S. St Francis Dr.
Santa Fe, NM 87505

CONDITIONS

Action 453358

CONDITIONS

Operator: DCP OPERATING COMPANY, LP 2331 Citywest Blvd Houston, TX 77042	OGRID: 36785
	Action Number: 453358
	Action Type: [NOTIFY] Notification Of Sampling (C-141N)

CONDITIONS

Created By	Condition	Condition Date
knorman	Failure to notify the OCD of sampling events including any changes in date/time per the requirements of 19.15.29.12.D.(1).(a) NMAC, may result in the remediation closure samples not being accepted.	4/18/2025

Appendix B – Photographic Log

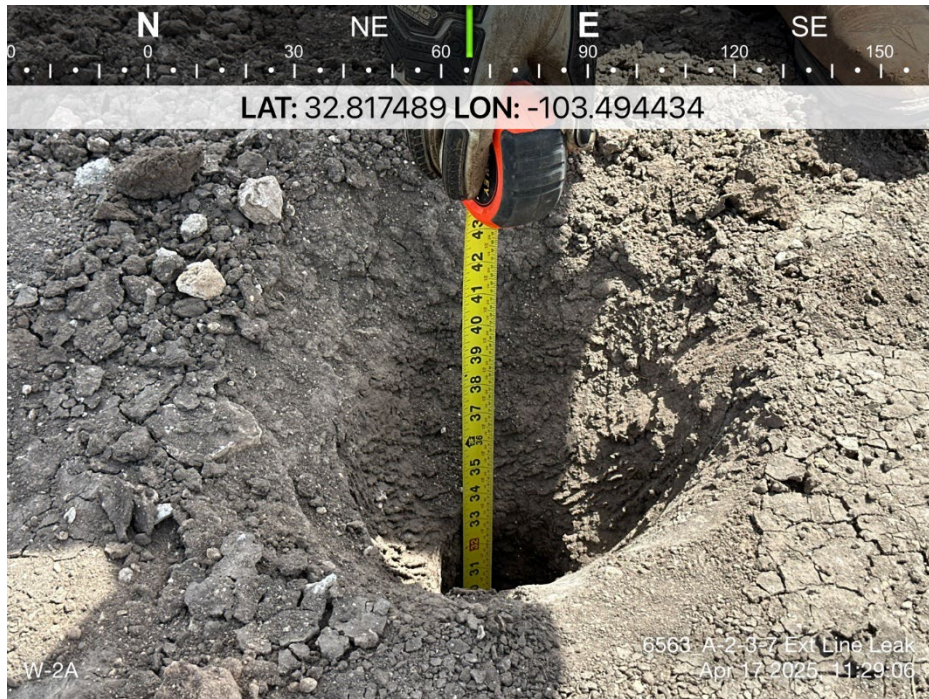
DCP Operating Company, LP

A-2-3-7 Ext Line – nAPP2331222132



DCP Operating Company, LP

A-2-3-7 Ext Line – nAPP2331222132



Appendix C – Certified Laboratory Analytical Reports



PHONE (575) 393-2326 ° 101 E. MARLAND ° HOBBS, NM 88240

April 24, 2025

KYLE NORMAN

TASMAN GEOSCIENCES

6899 PECOS ST. UNIT C

DENVER, CO 80221

RE: 6563_A-2-3-7 EXT LINE LEAK

Enclosed are the results of analyses for samples received by the laboratory on 04/17/25 13:57.

Cardinal Laboratories is accredited through Texas NELAP under certificate number TX-C24-00112. Accreditation applies to drinking water, non-potable water and solid and chemical materials. All accredited analytes are denoted by an asterisk (*). For a complete list of accredited analytes and matrices visit the TCEQ website at www.tceq.texas.gov/field/qa/lab_accred_certif.html.

Cardinal Laboratories is accredited through the State of Colorado Department of Public Health and Environment for:

Method EPA 552.2	Haloacetic Acids (HAA-5)
Method EPA 524.2	Total Trihalomethanes (TTHM)
Method EPA 524.4	Regulated VOCs (V1, V2, V3)

Accreditation applies to public drinking water matrices.

This report meets NELAP requirements and is made up of a cover page, analytical results, and a copy of the original chain-of-custody. If you have any questions concerning this report, please feel free to contact me.

Sincerely,

A handwritten signature in black ink that reads "Celey D. Keene". The signature is written in a cursive style with a large, stylized 'C' and 'K'.

Celey D. Keene

Lab Director/Quality Manager



PHONE (575) 393-2326 ° 101 E. MARLAND ° HOBBS, NM 88240

Analytical Results For:

TASMAN GEOSCIENCES
 KYLE NORMAN
 6899 PECOS ST. UNIT C
 DENVER CO, 80221
 Fax To:

Received: 04/17/2025
 Reported: 04/24/2025
 Project Name: 6563_A-2-3-7 EXT LINE LEAK
 Project Number: 6563
 Project Location: DCP MIDSTREAM

Sampling Date: 04/17/2025
 Sampling Type: Soil
 Sampling Condition: Cool & Intact
 Sample Received By: Shalyn Rodriguez

Sample ID: W - 1A (H252335-01)

BTX 8021B		mg/kg		Analyzed By: JH					
Analyte	Result	Reporting Limit	Analyzed	Method Blank	BS	% Recovery	True Value QC	RPD	Qualifier
Benzene*	<0.050	0.050	04/22/2025	ND	2.08	104	2.00	6.50	
Toluene*	<0.050	0.050	04/22/2025	ND	2.03	102	2.00	6.21	
Ethylbenzene*	<0.050	0.050	04/22/2025	ND	2.09	105	2.00	6.49	
Total Xylenes*	<0.150	0.150	04/22/2025	ND	6.26	104	6.00	8.06	
Total BTX	<0.300	0.300	04/22/2025	ND					

Surrogate: 4-Bromofluorobenzene (PID) 97.2 % 71.5-134

Chloride, SM4500Cl-B		mg/kg		Analyzed By: KV					
Analyte	Result	Reporting Limit	Analyzed	Method Blank	BS	% Recovery	True Value QC	RPD	Qualifier
Chloride	112	16.0	04/22/2025	ND	432	108	400	0.00	

TPH 8015M		mg/kg		Analyzed By: MS					
Analyte	Result	Reporting Limit	Analyzed	Method Blank	BS	% Recovery	True Value QC	RPD	Qualifier
GRO C6-C10*	<10.0	10.0	04/21/2025	ND	202	101	200	1.70	
DRO >C10-C28*	<10.0	10.0	04/21/2025	ND	198	98.9	200	1.61	
EXT DRO >C28-C36	<10.0	10.0	04/21/2025	ND					

Surrogate: 1-Chlorooctane 90.0 % 44.4-145

Surrogate: 1-Chlorooctadecane 86.8 % 40.6-153

Cardinal Laboratories

*=Accredited Analyte

PLEASE NOTE: Liability and Damages. Cardinal's liability and client's exclusive remedy for any claim arising, whether based in contract or tort, shall be limited to the amount paid by client for analyses. All claims, including those for negligence and any other cause whatsoever shall be deemed waived unless made in writing and received by Cardinal within thirty (30) days after completion of the applicable service. In no event shall Cardinal be liable for incidental or consequential damages, including, without limitation, business interruptions, loss of use, or loss of profits incurred by client, its subsidiaries, affiliates or successors arising out of or related to the performance of the services hereunder by Cardinal, regardless of whether such claim is based upon any of the above stated reasons or otherwise. Results relate only to the samples identified above. This report shall not be reproduced except in full with written approval of Cardinal Laboratories.

Celey D. Keene, Lab Director/Quality Manager



PHONE (575) 393-2326 ° 101 E. MARLAND ° HOBBS, NM 88240

Analytical Results For:

TASMAN GEOSCIENCES
 KYLE NORMAN
 6899 PECOS ST. UNIT C
 DENVER CO, 80221
 Fax To:

Received: 04/17/2025
 Reported: 04/24/2025
 Project Name: 6563_A-2-3-7 EXT LINE LEAK
 Project Number: 6563
 Project Location: DCP MIDSTREAM

Sampling Date: 04/17/2025
 Sampling Type: Soil
 Sampling Condition: Cool & Intact
 Sample Received By: Shalyn Rodriguez

Sample ID: W - 2A (H252335-02)

BTX 8021B		mg/kg		Analyzed By: JH					
Analyte	Result	Reporting Limit	Analyzed	Method Blank	BS	% Recovery	True Value QC	RPD	Qualifier
Benzene*	<0.050	0.050	04/22/2025	ND	2.08	104	2.00	6.50	
Toluene*	<0.050	0.050	04/22/2025	ND	2.03	102	2.00	6.21	
Ethylbenzene*	<0.050	0.050	04/22/2025	ND	2.09	105	2.00	6.49	
Total Xylenes*	<0.150	0.150	04/22/2025	ND	6.26	104	6.00	8.06	
Total BTX	<0.300	0.300	04/22/2025	ND					

Surrogate: 4-Bromofluorobenzene (PID) 96.2 % 71.5-134

Chloride, SM4500CI-B		mg/kg		Analyzed By: KV					
Analyte	Result	Reporting Limit	Analyzed	Method Blank	BS	% Recovery	True Value QC	RPD	Qualifier
Chloride	48.0	16.0	04/22/2025	ND	432	108	400	0.00	

TPH 8015M		mg/kg		Analyzed By: MS					
Analyte	Result	Reporting Limit	Analyzed	Method Blank	BS	% Recovery	True Value QC	RPD	Qualifier
GRO C6-C10*	<10.0	10.0	04/21/2025	ND	202	101	200	1.70	
DRO >C10-C28*	<10.0	10.0	04/21/2025	ND	198	98.9	200	1.61	
EXT DRO >C28-C36	<10.0	10.0	04/21/2025	ND					

Surrogate: 1-Chlorooctane 91.2 % 44.4-145

Surrogate: 1-Chlorooctadecane 90.1 % 40.6-153

Cardinal Laboratories

*=Accredited Analyte

PLEASE NOTE: Liability and Damages. Cardinal's liability and client's exclusive remedy for any claim arising, whether based in contract or tort, shall be limited to the amount paid by client for analyses. All claims, including those for negligence and any other cause whatsoever shall be deemed waived unless made in writing and received by Cardinal within thirty (30) days after completion of the applicable service. In no event shall Cardinal be liable for incidental or consequential damages, including, without limitation, business interruptions, loss of use, or loss of profits incurred by client, its subsidiaries, affiliates or successors arising out of or related to the performance of the services hereunder by Cardinal, regardless of whether such claim is based upon any of the above stated reasons or otherwise. Results relate only to the samples identified above. This report shall not be reproduced except in full with written approval of Cardinal Laboratories.

Celey D. Keene, Lab Director/Quality Manager



PHONE (575) 393-2326 ° 101 E. MARLAND ° HOBBS, NM 88240

Notes and Definitions

ND	Analyte NOT DETECTED at or above the reporting limit
RPD	Relative Percent Difference
**	Samples not received at proper temperature of 6°C or below.
***	Insufficient time to reach temperature.
-	Chloride by SM4500Cl-B does not require samples be received at or below 6°C Samples reported on an as received basis (wet) unless otherwise noted on report

Cardinal Laboratories

*=Accredited Analyte

PLEASE NOTE: Liability and Damages. Cardinal's liability and client's exclusive remedy for any claim arising, whether based in contract or tort, shall be limited to the amount paid by client for analyses. All claims, including those for negligence and any other cause whatsoever shall be deemed waived unless made in writing and received by Cardinal within thirty (30) days after completion of the applicable service. In no event shall Cardinal be liable for incidental or consequential damages, including, without limitation, business interruptions, loss of use, or loss of profits incurred by client, its subsidiaries, affiliates or successors arising out of or related to the performance of the services hereunder by Cardinal, regardless of whether such claim is based upon any of the above stated reasons or otherwise. Results relate only to the samples identified above. This report shall not be reproduced except in full with written approval of Cardinal Laboratories.

A handwritten signature in black ink, appearing to read "Celey D. Keene".

Celey D. Keene, Lab Director/Quality Manager


ARDINAL LABORATORIES

 101 East Marland, Hobbs, NM 88240 2111 Beechwood, Abilene, TX 79603
 (505) 393-2326 FAX (505) 393-2476 (325) 673-7001 FAX (325) 673-7020

CHAIN-OF-CUSTODY AND ANALYSIS REQUEST

Company Name: Tasman Geosciences										BILL TO		ANALYSIS REQUEST												
Project Manager: Kyle Norman										P.O. #:		TPH 8015 Ext BTEX Chlorides Hold 24-hr Rush 48-Hr Rush												
Address: 2620 W. Marland Blvd.										Company: Tasman Geo														
City: Hobbs State: NM Zip: 88240										Attn: Kyle Norman														
Phone #: 575-318-5017 Fax #:										Address: 2620 W. Marland														
Project #: Project Owner: DCP Midstream										City: Hobbs														
Project Name: 6563 A-2-3-7 EXT LINE LEAK										State: NM Zip: 88240														
Project Location:										Phone #: 575-318-5017														
Sampler Name: Bryan Bastos										Fax #:														
FOR LAB USE ONLY																								
Lab I.D.	Sample I.D.	(GRAB OR C/COMP)	# CONTAINERS	GROUNDWATER	WASTEWATER	SOIL	OIL	SLUDGE	OTHER	ACID/BASE	ICE / COOL	OTHER	DATE	TIME										
H252335	W-1A		1			X					X		4/17/25	1120	X	X	X							
2	W-2A		1										4/17/25	1126	X	X	X							

PLEASE NOTE: Liability and Damages. Cardinal's liability and client's exclusive remedy for any claim arising whether based in contract or tort, shall be limited to the amount paid by the client for the analyses. All claims, including those for negligence and any other cause whatsoever shall be deemed waived unless made in writing and received by Cardinal within 30 days after completion of the applicable service. In no event shall Cardinal be liable for incidental or consequential damages, including without limitation, business interruptions, loss of use, or loss of profits incurred by client, its subsidiaries, affiliates or successors arising out of or related to the performance of services hereunder by Cardinal, regardless of whether such claim is based upon any of the above stated reasons or otherwise.

Relinquished By:	4-17-25	Received By:	Phone Result: <input type="checkbox"/> Yes <input checked="" type="checkbox"/> No	Add'l Phone #:
Time: 1357	8 Rodriguez	Fax Result: <input type="checkbox"/> Yes <input checked="" type="checkbox"/> No	Add'l Fax #:	
Relinquished By:	Date:	Received By:	REMARKS:	
Time:			email results: NMDData@tasman-geo.com; knorman@tasman-geo.com;	
			bdennis@tasman-geo.com; kstark@tasman-geo.com; bbastos@tasman-geo.com; Albert.L.Hyman@p66.com	
Delivered By: (Circle One)	28: C10.3:	Sample Condition Cool	CHECKED BY:	
Sampler - UPS - Bus - Other:	3.12 #140	Intact	(Initials)	
		<input checked="" type="checkbox"/> Yes <input type="checkbox"/> No	8K	

† Cardinal cannot accept verbal changes. Please fax written changes to 505-393-2476



PHONE (575) 393-2326 ° 101 E. MARLAND ° HOBBS, NM 88240

April 28, 2025

KYLE NORMAN

TASMAN GEOSCIENCES

6899 PECOS ST. UNIT C

DENVER, CO 80221

RE: 6563_A-2-3-7 EXT LINE LEAK

Enclosed are the results of analyses for samples received by the laboratory on 04/22/25 14:41.

Cardinal Laboratories is accredited through Texas NELAP under certificate number TX-C24-00112. Accreditation applies to drinking water, non-potable water and solid and chemical materials. All accredited analytes are denoted by an asterisk (*). For a complete list of accredited analytes and matrices visit the TCEQ website at www.tceq.texas.gov/field/qa/lab_accred_certif.html.

Cardinal Laboratories is accredited through the State of Colorado Department of Public Health and Environment for:

Method EPA 552.2	Haloacetic Acids (HAA-5)
Method EPA 524.2	Total Trihalomethanes (TTHM)
Method EPA 524.4	Regulated VOCs (V1, V2, V3)

Accreditation applies to public drinking water matrices.

This report meets NELAP requirements and is made up of a cover page, analytical results, and a copy of the original chain-of-custody. If you have any questions concerning this report, please feel free to contact me.

Sincerely,

A handwritten signature in black ink that reads "Celey D. Keene". The signature is written in a cursive style with a large, stylized 'C' and 'K'.

Celey D. Keene

Lab Director/Quality Manager



PHONE (575) 393-2326 ° 101 E. MARLAND ° HOBBS, NM 88240

Analytical Results For:

TASMAN GEOSCIENCES
 KYLE NORMAN
 6899 PECOS ST. UNIT C
 DENVER CO, 80221
 Fax To:

Received:	04/22/2025	Sampling Date:	04/22/2025
Reported:	04/28/2025	Sampling Type:	Soil
Project Name:	6563_A-2-3-7 EXT LINE LEAK	Sampling Condition:	Cool & Intact
Project Number:	6563	Sample Received By:	Alyssa Parras
Project Location:	DCP MIDSTREAM		

Sample ID: FL - 1A @ 4.5' (H252414-01)

BTX 8021B		mg/kg		Analyzed By: JH					
Analyte	Result	Reporting Limit	Analyzed	Method Blank	BS	% Recovery	True Value QC	RPD	Qualifier
Benzene*	<0.050	0.050	04/24/2025	ND	2.22	111	2.00	2.87	
Toluene*	<0.050	0.050	04/24/2025	ND	2.19	110	2.00	4.04	
Ethylbenzene*	<0.050	0.050	04/24/2025	ND	2.27	113	2.00	4.43	
Total Xylenes*	<0.150	0.150	04/24/2025	ND	6.42	107	6.00	4.05	
Total BTX	<0.300	0.300	04/24/2025	ND					

Surrogate: 4-Bromofluorobenzene (PID) 131 % 71.5-134

Chloride, SM4500Cl-B		mg/kg		Analyzed By: KV						
Analyte	Result	Reporting Limit	Analyzed	Method Blank	BS	% Recovery	True Value QC	RPD	Qualifier	
Chloride	<16.0	16.0	04/24/2025	ND	416	104	400	0.00		

TPH 8015M		mg/kg		Analyzed By: ms					
Analyte	Result	Reporting Limit	Analyzed	Method Blank	BS	% Recovery	True Value QC	RPD	Qualifier
GRO C6-C10*	<10.0	10.0	04/24/2025	ND	178	88.9	200	7.39	
DRO >C10-C28*	<10.0	10.0	04/24/2025	ND	187	93.6	200	2.56	
EXT DRO >C28-C36	<10.0	10.0	04/24/2025	ND					

Surrogate: 1-Chlorooctane 78.0 % 44.4-145

Surrogate: 1-Chlorooctadecane 70.9 % 40.6-153

Cardinal Laboratories

*=Accredited Analyte

PLEASE NOTE: Liability and Damages. Cardinal's liability and client's exclusive remedy for any claim arising, whether based in contract or tort, shall be limited to the amount paid by client for analyses. All claims, including those for negligence and any other cause whatsoever shall be deemed waived unless made in writing and received by Cardinal within thirty (30) days after completion of the applicable service. In no event shall Cardinal be liable for incidental or consequential damages, including, without limitation, business interruptions, loss of use, or loss of profits incurred by client, its subsidiaries, affiliates or successors arising out of or related to the performance of the services hereunder by Cardinal, regardless of whether such claim is based upon any of the above stated reasons or otherwise. Results relate only to the samples identified above. This report shall not be reproduced except in full with written approval of Cardinal Laboratories.

Celey D. Keene, Lab Director/Quality Manager



PHONE (575) 393-2326 ° 101 E. MARLAND ° HOBBS, NM 88240

Analytical Results For:

TASMAN GEOSCIENCES
 KYLE NORMAN
 6899 PECOS ST. UNIT C
 DENVER CO, 80221
 Fax To:

Received: 04/22/2025
 Reported: 04/28/2025
 Project Name: 6563_A-2-3-7 EXT LINE LEAK
 Project Number: 6563
 Project Location: DCP MIDSTREAM

Sampling Date: 04/22/2025
 Sampling Type: Soil
 Sampling Condition: Cool & Intact
 Sample Received By: Alyssa Parras

Sample ID: FL - 2A @ 4.5' (H252414-02)

BTX 8021B		mg/kg	Analyzed By: JH					S-04	
Analyte	Result	Reporting Limit	Analyzed	Method Blank	BS	% Recovery	True Value QC	RPD	Qualifier
Benzene*	<0.050	0.050	04/24/2025	ND	2.22	111	2.00	2.87	
Toluene*	<0.050	0.050	04/24/2025	ND	2.19	110	2.00	4.04	
Ethylbenzene*	<0.050	0.050	04/24/2025	ND	2.27	113	2.00	4.43	
Total Xylenes*	<0.150	0.150	04/24/2025	ND	6.42	107	6.00	4.05	
Total BTX	<0.300	0.300	04/24/2025	ND					

Surrogate: 4-Bromofluorobenzene (PID) 143 % 71.5-134

Chloride, SM4500CI-B		mg/kg	Analyzed By: KV						
Analyte	Result	Reporting Limit	Analyzed	Method Blank	BS	% Recovery	True Value QC	RPD	Qualifier
Chloride	<16.0	16.0	04/24/2025	ND	416	104	400	0.00	

TPH 8015M		mg/kg	Analyzed By: ms						
Analyte	Result	Reporting Limit	Analyzed	Method Blank	BS	% Recovery	True Value QC	RPD	Qualifier
GRO C6-C10*	<10.0	10.0	04/24/2025	ND	178	88.9	200	7.39	
DRO >C10-C28*	<10.0	10.0	04/24/2025	ND	187	93.6	200	2.56	
EXT DRO >C28-C36	<10.0	10.0	04/24/2025	ND					

Surrogate: 1-Chlorooctane 82.4 % 44.4-145

Surrogate: 1-Chlorooctadecane 74.3 % 40.6-153

Cardinal Laboratories

*=Accredited Analyte

PLEASE NOTE: Liability and Damages. Cardinal's liability and client's exclusive remedy for any claim arising, whether based in contract or tort, shall be limited to the amount paid by client for analyses. All claims, including those for negligence and any other cause whatsoever shall be deemed waived unless made in writing and received by Cardinal within thirty (30) days after completion of the applicable service. In no event shall Cardinal be liable for incidental or consequential damages, including, without limitation, business interruptions, loss of use, or loss of profits incurred by client, its subsidiaries, affiliates or successors arising out of or related to the performance of the services hereunder by Cardinal, regardless of whether such claim is based upon any of the above stated reasons or otherwise. Results relate only to the samples identified above. This report shall not be reproduced except in full with written approval of Cardinal Laboratories.

Celey D. Keene, Lab Director/Quality Manager

PHONE (575) 393-2326 ° 101 E. MARLAND ° HOBBS, NM 88240

Notes and Definitions

S-04	The surrogate recovery for this sample is outside of established control limits due to a sample matrix effect.
ND	Analyte NOT DETECTED at or above the reporting limit
RPD	Relative Percent Difference
**	Samples not received at proper temperature of 6°C or below.
***	Insufficient time to reach temperature.
-	Chloride by SM4500Cl-B does not require samples be received at or below 6°C Samples reported on an as received basis (wet) unless otherwise noted on report

Cardinal Laboratories

*=Accredited Analyte

PLEASE NOTE: Liability and Damages. Cardinal's liability and client's exclusive remedy for any claim arising, whether based in contract or tort, shall be limited to the amount paid by client for analyses. All claims, including those for negligence and any other cause whatsoever shall be deemed waived unless made in writing and received by Cardinal within thirty (30) days after completion of the applicable service. In no event shall Cardinal be liable for incidental or consequential damages, including, without limitation, business interruptions, loss of use, or loss of profits incurred by client, its subsidiaries, affiliates or successors arising out of or related to the performance of the services hereunder by Cardinal, regardless of whether such claim is based upon any of the above stated reasons or otherwise. Results relate only to the samples identified above. This report shall not be reproduced except in full with written approval of Cardinal Laboratories.

A handwritten signature in black ink, appearing to read "Celey D. Keene".

Celey D. Keene, Lab Director/Quality Manager



ARDINAL LABORATORIES

101 East Marland, Hobbs, NM 88240 2111 Beechwood, Abilene, TX 79603
(505) 393-2326 FAX (505) 393-2476 (325) 673-7001 FAX (325) 673-7020

CHAIN-OF-CUSTODY AND ANALYSIS REQUEST

Company Name: Tasman Geosciences				BILL TO				ANALYSIS REQUEST															
Project Manager: Kyle Norman				P.O. #:				<div style="display: flex; flex-direction: column; align-items: center;"> <div>TPH 8015 Ext</div> <div>BTEX</div> <div>Chlorides</div> <div>Hold</div> <div>24-hr Rush</div> <div>48-Hr Rush</div> </div>															
Address: 2620 W. Marland Blvd.				Company: Tasman Geo																			
City: Hobbs State: NM Zip: 88240				Attn: Kyle Norman																			
Phone #: 575-318-5017 Fax #:				Address: 2620 W. Marland																			
Project #: Project Owner: DCP Midstream				City: Hobbs																			
Project Name: 6563 A-2-3-7 EXT LINE LEAK				State: NM Zip: 88240																			
Project Location:				Phone #: 575-318-5017																			
Sampler Name: Bryan Bastos				Fax #:																			
FOR LAB USE ONLY				MATRIX		PRESERV.		SAMPLING															
Lab I.D.	Sample I.D.	(GIRAB OR C)OMP	# CONTAINERS	GROUNDWATER	WASTEWATER	SOIL	OIL	SLUDGE	OTHER	ACID/BASE	ICE / COOL	OTHER	DATE	TIME									
H652414	FL-1A@4.5'	1				X				X			4/22/25	10:35	X	X	X						
2	FL-2A@4.5'	1				X				X			4/22/25	12:01	X	X	X						

PLEASE NOTE: Liability and Damages. Cardinal's liability and client's exclusive remedy for any claim arising whether based in contract or tort, shall be limited to the amount paid by the client for the analyses. All claims, including those for negligence and any other cause whatsoever shall be deemed waived unless made in writing and received by Cardinal within 30 days after completion of the applicable service. In no event shall Cardinal be liable for incidental or consequential damages, including without limitation, business interruptions, loss of use, or loss of profits incurred by client, its subsidiaries, affiliates or successors arising out of or related to the performance of services hereunder by Cardinal, regardless of whether such claim is based upon any of the above stated reasons or otherwise.

Relinquished By:	Time: 4:22:25	Received By:	Phone Result: <input type="checkbox"/> Yes <input checked="" type="checkbox"/> No	Add'l Phone #:
Relinquished By:	Date: 4/22/25	Received By:	Fax Result: <input type="checkbox"/> Yes <input checked="" type="checkbox"/> No	Add'l Fax #:
Delivered By: (Circle One) Sampler - UPS - Bus - Other: 502/C40-50	Time: 4:41	Sample Condition Cool Intact <input checked="" type="checkbox"/> Yes <input checked="" type="checkbox"/> Yes <input type="checkbox"/> No <input type="checkbox"/> No	REMARKS: email results: NMData@tasman-geo.com; knorman@tasman-geo.com; bdennis@tasman-geo.com; kstark@tasman-geo.com; bbastos@tasman-geo.com; Albert.L.Hyman@p66.com stephen.weathers@p66.com	
502/C40-50 502/#140		CHECKED BY: (Initials) 		

† Cardinal cannot accept verbal changes. Please fax written changes to 505-393-2476

Sante Fe Main Office
Phone: (505) 476-3441

General Information
Phone: (505) 629-6116

Online Phone Directory
<https://www.emnrd.nm.gov/ocd/contact-us>

State of New Mexico
Energy, Minerals and Natural Resources
Oil Conservation Division
1220 S. St Francis Dr.
Santa Fe, NM 87505

QUESTIONS

Action 459648

QUESTIONS

Operator: DCP OPERATING COMPANY, LP 2331 Citywest Blvd Houston, TX 77042	OGRID: 36785
	Action Number: 459648
	Action Type: [C-141] Remediation Closure Request C-141 (C-141-v-Closure)

QUESTIONS

Prerequisites	
Incident ID (n#)	nAPP2331222132
Incident Name	NAPP2331222132 A-2-3-7 EXT PIPELINE @ 0
Incident Type	Produced Water Release
Incident Status	Remediation Closure Report Received
Incident Facility	[fAPP2123031660] DCP SE NM Gathering System

Location of Release Source*Please answer all the questions in this group.*

Site Name	A-2-3-7 EXT PIPELINE
Date Release Discovered	11/07/2023
Surface Owner	State

Incident Details*Please answer all the questions in this group.*

Incident Type	Produced Water Release
Did this release result in a fire or is the result of a fire	No
Did this release result in any injuries	No
Has this release reached or does it have a reasonable probability of reaching a watercourse	No
Has this release endangered or does it have a reasonable probability of endangering public health	No
Has this release substantially damaged or will it substantially damage property or the environment	No
Is this release of a volume that is or may with reasonable probability be detrimental to fresh water	No

Nature and Volume of Release*Material(s) released, please answer all that apply below. Any calculations or specific justifications for the volumes provided should be attached to the follow-up C-141 submission.*

Crude Oil Released (bbls) Details	Not answered.
Produced Water Released (bbls) Details	Cause: Corrosion Pipeline (Any) Produced Water Released: 8 BBL Recovered: 1 BBL Lost: 7 BBL.
Is the concentration of chloride in the produced water >10,000 mg/l	No
Condensate Released (bbls) Details	Not answered.
Natural Gas Vented (Mcf) Details	Not answered.
Natural Gas Flared (Mcf) Details	Not answered.
Other Released Details	Not answered.
Are there additional details for the questions above (i.e. any answer containing Other, Specify, Unknown, and/or Fire, or any negative lost amounts)	Not answered.

Sante Fe Main Office
Phone: (505) 476-3441

General Information
Phone: (505) 629-6116

Online Phone Directory
<https://www.emnrd.nm.gov/ocd/contact-us>

State of New Mexico
Energy, Minerals and Natural Resources
Oil Conservation Division
1220 S. St Francis Dr.
Santa Fe, NM 87505

QUESTIONS, Page 2

Action 459648

QUESTIONS (continued)

Operator: DCP OPERATING COMPANY, LP 2331 Citywest Blvd Houston, TX 77042	OGRID: 36785
	Action Number: 459648
	Action Type: [C-141] Remediation Closure Request C-141 (C-141-v-Closure)

QUESTIONS

Nature and Volume of Release (continued)	
Is this a gas only submission (i.e. only significant Mcf values reported)	No, according to supplied volumes this does not appear to be a "gas only" report.
Was this a major release as defined by Subsection A of 19.15.29.7 NMAC	No
Reasons why this would be considered a submission for a notification of a major release	<i>Unavailable.</i>
<i>With the implementation of the 19.15.27 NMAC (05/25/2021), venting and/or flaring of natural gas (i.e. gas only) are to be submitted on the C-129 form.</i>	

Initial Response

The responsible party must undertake the following actions immediately unless they could create a safety hazard that would result in injury.

The source of the release has been stopped	True
The impacted area has been secured to protect human health and the environment	True
Released materials have been contained via the use of berms or dikes, absorbent pads, or other containment devices	True
All free liquids and recoverable materials have been removed and managed appropriately	True
If all the actions described above have not been undertaken, explain why	<i>Not answered.</i>

Per Paragraph (4) of Subsection B of 19.15.29.8 NMAC the responsible party may commence remediation immediately after discovery of a release. If remediation has begun, please prepare and attach a narrative of actions to date in the follow-up C-141 submission. If remedial efforts have been successfully completed or if the release occurred within a lined containment area (see Subparagraph (a) of Paragraph (5) of Subsection A of 19.15.29.11 NMAC), please prepare and attach all information needed for closure evaluation in the follow-up C-141 submission.

I hereby certify that the information given above is true and complete to the best of my knowledge and understand that pursuant to OCD rules and regulations all operators are required to report and/or file certain release notifications and perform corrective actions for releases which may endanger public health or the environment. The acceptance of a C-141 report by the OCD does not relieve the operator of liability should their operations have failed to adequately investigate and remediate contamination that pose a threat to groundwater, surface water, human health or the environment. In addition, OCD acceptance of a C-141 report does not relieve the operator of responsibility for compliance with any other federal, state, or local laws and/or regulations.

I hereby agree and sign off to the above statement	Name: Ray Smalts Title: Sr Environmental Eng/Spec Email: raymond.a.smalts@p66.com Date: 10/09/2024
--	---

Sante Fe Main Office
Phone: (505) 476-3441

General Information
Phone: (505) 629-6116

Online Phone Directory
<https://www.emnrd.nm.gov/ocd/contact-us>

State of New Mexico
Energy, Minerals and Natural Resources
Oil Conservation Division
1220 S. St Francis Dr.
Santa Fe, NM 87505

QUESTIONS, Page 3

Action 459648

QUESTIONS (continued)

Operator: DCP OPERATING COMPANY, LP 2331 Citywest Blvd Houston, TX 77042	OGRID: 36785
	Action Number: 459648
	Action Type: [C-141] Remediation Closure Request C-141 (C-141-v-Closure)

QUESTIONS

Site Characterization	
<i>Please answer all the questions in this group (only required when seeking remediation plan approval and beyond). This information must be provided to the appropriate district office no later than 90 days after the release discovery date.</i>	
What is the shallowest depth to groundwater beneath the area affected by the release in feet below ground surface (ft bgs)	Between 75 and 100 (ft.)
What method was used to determine the depth to ground water	NM OSE iWaters Database Search
Did this release impact groundwater or surface water	No
What is the minimum distance, between the closest lateral extents of the release and the following surface areas:	
A continuously flowing watercourse or any other significant watercourse	Greater than 5 (mi.)
Any lakebed, sinkhole, or playa lake (measured from the ordinary high-water mark)	Between 1000 (ft.) and ½ (mi.)
An occupied permanent residence, school, hospital, institution, or church	Greater than 5 (mi.)
A spring or a private domestic fresh water well used by less than five households for domestic or stock watering purposes	Between ½ and 1 (mi.)
Any other fresh water well or spring	Between ½ and 1 (mi.)
Incorporated municipal boundaries or a defined municipal fresh water well field	Greater than 5 (mi.)
A wetland	Greater than 5 (mi.)
A subsurface mine	Greater than 5 (mi.)
An (non-karst) unstable area	Greater than 5 (mi.)
Categorize the risk of this well / site being in a karst geology	None
A 100-year floodplain	Greater than 5 (mi.)
Did the release impact areas not on an exploration, development, production, or storage site	Yes

Remediation Plan	
<i>Please answer all the questions that apply or are indicated. This information must be provided to the appropriate district office no later than 90 days after the release discovery date.</i>	
Requesting a remediation plan approval with this submission	Yes
<i>Attach a comprehensive report demonstrating the lateral and vertical extents of soil contamination associated with the release have been determined, pursuant to 19.15.29.11 NMAC and 19.15.29.13 NMAC.</i>	
Have the lateral and vertical extents of contamination been fully delineated	Yes
Was this release entirely contained within a lined containment area	No
Soil Contamination Sampling: (Provide the highest observable value for each, in milligrams per kilograms.)	
Chloride (EPA 300.0 or SM4500 Cl B)	432
TPH (GRO+DRO+MRO) (EPA SW-846 Method 8015M)	22080
GRO+DRO (EPA SW-846 Method 8015M)	19900
BTEX (EPA SW-846 Method 8021B or 8260B)	867
Benzene (EPA SW-846 Method 8021B or 8260B)	94.6
<i>Per Subsection B of 19.15.29.11 NMAC unless the site characterization report includes completed efforts at remediation, the report must include a proposed remediation plan in accordance with 19.15.29.12 NMAC, which includes the anticipated timelines for beginning and completing the remediation.</i>	
On what estimated date will the remediation commence	12/02/2024
On what date will (or did) the final sampling or liner inspection occur	12/16/2024
On what date will (or was) the remediation complete(d)	12/16/2024
What is the estimated surface area (in square feet) that will be reclaimed	4000
What is the estimated volume (in cubic yards) that will be reclaimed	1200
What is the estimated surface area (in square feet) that will be remediated	3000
What is the estimated volume (in cubic yards) that will be remediated	1200
<i>These estimated dates and measurements are recognized to be the best guess or calculation at the time of submission and may (be) change(d) over time as more remediation efforts are completed.</i>	
<i>The OCD recognizes that proposed remediation measures may have to be minimally adjusted in accordance with the physical realities encountered during remediation. If the responsible party has any need to significantly deviate from the remediation plan proposed, then it should consult with the division to determine if another remediation plan submission is required.</i>	

Sante Fe Main Office
Phone: (505) 476-3441

General Information
Phone: (505) 629-6116

Online Phone Directory
<https://www.emnrd.nm.gov/ocd/contact-us>

State of New Mexico
Energy, Minerals and Natural Resources
Oil Conservation Division
1220 S. St Francis Dr.
Santa Fe, NM 87505

QUESTIONS, Page 4

Action 459648

QUESTIONS (continued)

Operator: DCP OPERATING COMPANY, LP 2331 Citywest Blvd Houston, TX 77042	OGRID:	36785
	Action Number:	459648
	Action Type:	[C-141] Remediation Closure Request C-141 (C-141-v-Closure)

QUESTIONS

Remediation Plan (continued)	
<i>Please answer all the questions that apply or are indicated. This information must be provided to the appropriate district office no later than 90 days after the release discovery date.</i>	
This remediation will (or is expected to) utilize the following processes to remediate / reduce contaminants:	
<i>(Select all answers below that apply.)</i>	
(Ex Situ) Excavation and off-site disposal (i.e. dig and haul, hydrovac, etc.)	Yes
Which OCD approved facility will be used for off-site disposal	LEA LAND LANDFILL [fEEM0112342028]
OR which OCD approved well (API) will be used for off-site disposal	Not answered.
OR is the off-site disposal site, to be used, out-of-state	No
OR is the off-site disposal site, to be used, an NMED facility	No
(Ex Situ) Excavation and on-site remediation (i.e. On-Site Land Farms)	No
(In Situ) Soil Vapor Extraction	No
(In Situ) Chemical processing (i.e. Soil Shredding, Potassium Permanganate, etc.)	No
(In Situ) Biological processing (i.e. Microbes / Fertilizer, etc.)	No
(In Situ) Physical processing (i.e. Soil Washing, Gypsum, Disking, etc.)	No
Ground Water Abatement pursuant to 19.15.30 NMAC	No
OTHER (Non-listed remedial process)	No
<i>Per Subsection B of 19.15.29.11 NMAC unless the site characterization report includes completed efforts at remediation, the report must include a proposed remediation plan in accordance with 19.15.29.12 NMAC, which includes the anticipated timelines for beginning and completing the remediation.</i>	
I hereby certify that the information given above is true and complete to the best of my knowledge and understand that pursuant to OCD rules and regulations all operators are required to report and/or file certain release notifications and perform corrective actions for releases which may endanger public health or the environment. The acceptance of a C-141 report by the OCD does not relieve the operator of liability should their operations have failed to adequately investigate and remediate contamination that pose a threat to groundwater, surface water, human health or the environment. In addition, OCD acceptance of a C-141 report does not relieve the operator of responsibility for compliance with any other federal, state, or local laws and/or regulations.	
I hereby agree and sign off to the above statement	Name: Ray Smalts Title: Sr Environmental Eng/Spec Email: raymond.a.smalts@p66.com Date: 10/09/2024
<i>The OCD recognizes that proposed remediation measures may have to be minimally adjusted in accordance with the physical realities encountered during remediation. If the responsible party has any need to significantly deviate from the remediation plan proposed, then it should consult with the division to determine if another remediation plan submission is required.</i>	

Sante Fe Main Office
Phone: (505) 476-3441

General Information
Phone: (505) 629-6116

Online Phone Directory
<https://www.emnrd.nm.gov/ocd/contact-us>

State of New Mexico
Energy, Minerals and Natural Resources
Oil Conservation Division
1220 S. St Francis Dr.
Santa Fe, NM 87505

QUESTIONS, Page 5

Action 459648

QUESTIONS (continued)

Operator: DCP OPERATING COMPANY, LP 2331 Citywest Blvd Houston, TX 77042	OGRID: 36785
	Action Number: 459648
	Action Type: [C-141] Remediation Closure Request C-141 (C-141-v-Closure)

QUESTIONS

Deferral Requests Only	
Only answer the questions in this group if seeking a deferral upon approval this submission. Each of the following items must be confirmed as part of any request for deferral of remediation.	
Requesting a deferral of the remediation closure due date with the approval of this submission	No

Sante Fe Main Office
Phone: (505) 476-3441

General Information
Phone: (505) 629-6116

Online Phone Directory
<https://www.emnrd.nm.gov/ocd/contact-us>

State of New Mexico
Energy, Minerals and Natural Resources
Oil Conservation Division
1220 S. St Francis Dr.
Santa Fe, NM 87505

QUESTIONS, Page 6

Action 459648

QUESTIONS (continued)

Operator: DCP OPERATING COMPANY, LP 2331 Citywest Blvd Houston, TX 77042	OGRID: 36785
	Action Number: 459648
	Action Type: [C-141] Remediation Closure Request C-141 (C-141-v-Closure)

QUESTIONS

Sampling Event Information	
Last sampling notification (C-141N) recorded	453358
Sampling date pursuant to Subparagraph (a) of Paragraph (1) of Subsection D of 19.15.29.12 NMAC	04/22/2025
What was the (estimated) number of samples that were to be gathered	2
What was the sampling surface area in square feet	700

Remediation Closure Request	
<i>Only answer the questions in this group if seeking remediation closure for this release because all remediation steps have been completed.</i>	
Requesting a remediation closure approval with this submission	Yes
Have the lateral and vertical extents of contamination been fully delineated	Yes
Was this release entirely contained within a lined containment area	No
All areas reasonably needed for production or subsequent drilling operations have been stabilized, returned to the sites existing grade, and have a soil cover that prevents ponding of water, minimizing dust and erosion	Yes
What was the total surface area (in square feet) remediated	3800
What was the total volume (cubic yards) remediated	1792
All areas not reasonably needed for production or subsequent drilling operations have been reclaimed to contain a minimum of four feet of non-waste contain earthen material with concentrations less than 600 mg/kg chlorides, 100 mg/kg TPH, 50 mg/kg BTEX, and 10 mg/kg Benzene	Yes
What was the total surface area (in square feet) reclaimed	3800
What was the total volume (in cubic yards) reclaimed	562
Summarize any additional remediation activities not included by answers (above)	Please note that this submission is an addendum to the January closure request.
<i>The responsible party must attach information demonstrating they have complied with all applicable closure requirements and any conditions or directives of the OCD. This demonstration should be in the form of a comprehensive report (in .pdf format) including a scaled site map, sampling diagrams, relevant field notes, photographs of any excavation prior to backfilling, laboratory data including chain of custody documents of final sampling, and a narrative of the remedial activities. Refer to 19.15.29.12 NMAC.</i>	
I hereby certify that the information given above is true and complete to the best of my knowledge and understand that pursuant to OCD rules and regulations all operators are required to report and/or file certain release notifications and perform corrective actions for releases which may endanger public health or the environment. The acceptance of a C-141 report by the OCD does not relieve the operator of liability should their operations have failed to adequately investigate and remediate contamination that pose a threat to groundwater, surface water, human health or the environment. In addition, OCD acceptance of a C-141 report does not relieve the operator of responsibility for compliance with any other federal, state, or local laws and/or regulations. The responsible party acknowledges they must substantially restore, reclaim, and re-vegetate the impacted surface area to the conditions that existed prior to the release or their final land use in accordance with 19.15.29.13 NMAC including notification to the OCD when reclamation and re-vegetation are complete.	
I hereby agree and sign off to the above statement	Name: Stephen Weathers Title: Principal Environmental Specialist DCP Email: SWWeathers@dcprmidstream.com Date: 05/07/2025

Sante Fe Main Office
Phone: (505) 476-3441

General Information
Phone: (505) 629-6116

Online Phone Directory
<https://www.emnrd.nm.gov/ocd/contact-us>

State of New Mexico
Energy, Minerals and Natural Resources
Oil Conservation Division
1220 S. St Francis Dr.
Santa Fe, NM 87505

QUESTIONS, Page 7

Action 459648

QUESTIONS (continued)

Operator: DCP OPERATING COMPANY, LP 2331 Citywest Blvd Houston, TX 77042	OGRID: 36785
	Action Number: 459648
	Action Type: [C-141] Remediation Closure Request C-141 (C-141-v-Closure)

QUESTIONS

Reclamation Report	
Only answer the questions in this group if all reclamation steps have been completed.	
Requesting a reclamation approval with this submission	No

Sante Fe Main Office
Phone: (505) 476-3441

General Information
Phone: (505) 629-6116

Online Phone Directory
<https://www.emnrd.nm.gov/ocd/contact-us>

State of New Mexico
Energy, Minerals and Natural Resources
Oil Conservation Division
1220 S. St Francis Dr.
Santa Fe, NM 87505

CONDITIONS

Action 459648

CONDITIONS

Operator: DCP OPERATING COMPANY, LP 2331 Citywest Blvd Houston, TX 77042	OGRID: 36785
	Action Number: 459648
	Action Type: [C-141] Remediation Closure Request C-141 (C-141-v-Closure)

CONDITIONS

Created By	Condition	Condition Date
nvez	None	7/2/2025