



Incident Number: nAPP2325637510

Liner Inspection Closure Report

Ann SWD #1

Unit Letter G, Section 18, Township 19 South, Range 26 East

API: 30-015-23580

County: Eddy

Coordinates: 32.662059, -104.418501

Vertex File Number: 23E-04895

Prepared for:

Silverback Operating II, LLC.

Prepared by:

Vertex Resource Services Inc.

Date:

May 2025

Silverback Operating II, LLC.
Ann SWD #1

Liner Inspection Closure Report
May 2025

Liner Inspection Closure Report

Ann SWD #1

Unit Letter G, Section 18, Township 19 South, Range 26 East

API: 30-015-23580

County: Eddy

Coordinates: 32.662059, -104.418501

Prepared for:

Silverback Operating II, LLC.

108 South 4th Street

Artesia, New Mexico 88210

New Mexico Oil Conservation Division – District 2 – Artesia

508 West Texas Avenue

Artesia, New Mexico 88210

Prepared by:

Vertex Resource Services Inc.

3101 Boyd Drive

Carlsbad, New Mexico 88220



Fernando Rodriguez, B.Sc.
PROJECT MANAGER, REPORTING

May 21, 2025

Date

Table of Contents

1.0 Introduction 1

2.0 Incident Description 1

3.0 Site Characteristics 1

4.0 Closure Criteria Determination 2

5.0 Remedial Actions Taken 4

6.0 Closure Request..... 4

7.0 References..... 5

8.0 Limitations 6

Silverback Operating II, LLC.
Ann SWD #1

Liner Inspection Closure Report
May 2025

In-text Tables

Table 1. Closure Criteria Determination

Table 2. Closure Criteria for Soils Impacted by a Release

List of Appendices

Appendix A. Liner Inspection Report with Photographs

Appendix B. Closure Criteria Determination

1.0 Introduction

Silverback Operating II, LLC. (Silverback) retained Vertex Resource Services Inc. (Vertex) to complete a Liner Inspection and Closure Report for a crude oil and produced water release that occurred on September 9, 2023, at the Ann SWD #1 (hereafter referred to as the "site"). Silverback submitted an initial C-141 release notification to the New Mexico Oil Conservation Division (NMOCD) District 2 on September 13, 2023. Incident ID number nAPP2325637510 was assigned to this incident.

This report provides a description of the site assessment, clean-up activities, and liner inspection associated with the site. The information presented demonstrates that closure requirements of 19.15.29.12 of the *New Mexico Administrative Code* (NMAC; New Mexico Oil Conservation Division, 2018) related to NMOCD has been met and all applicable regulations are being followed. This document is intended to serve as a final report to obtain approval from NMOCD for closure of this release, with the understanding that restoration of the release site will be deferred until such time as all oil and gas activities are terminated and the site is reclaimed as per NMAC 19.15.29.13.

2.0 Incident Description

The release occurred on September 9, 2023, due to a logic error in the controller failing to correctly read the tank levels and engage the injection pump, thus resulting in the tank overflowing. The NMOCD was immediately notified, and a C-141 was filed on September 13, 2023. The incident involved the release of approximately 360 barrels (bbl.) of produced water and 80 barrels (bbl.) of crude oil into the lined containment. All 440 bbls. of free fluid were contained within the lined containment and recovered during initial clean-up. Additional details relevant to the release are presented in the C-141 Report. The initial site assessment photographs are included in the Liner Inspection Report of Appendix A.

3.0 Site Characteristics

The site is located approximately 12.4 miles southwest of Artesia, New Mexico (Google Inc., 2025). The legal location for the site is Unit G, Section 18, Township 19 South and Range 26 East in Eddy County, New Mexico. The spill area is located on private property.

The location is typical of oil and gas exploration and production sites in the Permian Basin and is currently used for saltwater disposal and storage. The following sections specifically describe the release area surrounding the well and tank battery.

The Geological Map of New Mexico (New Mexico Bureau of Geology and Mineral Resources, 2025) indicates the site's surface geology primarily comprises Qp – Piedmont alluvial deposits (Holocene to lower Pleistocene) which include uplands landforms, mainly on hill slopes, ridges, plains, terraces and some fan remnants. The predominant soil classification is defined as Reagan-Upton Association. Soil can be classified as well-drained with a low runoff class. The karst geology at the site is characterized as low potential (United States Department of the Interior, Bureau of Land Management, 2018).

The surrounding landscape is associated with fan remnants and alluvial fans with elevations ranging between 2,800 and 5,000 feet. The climate is semiarid with average annual precipitation ranging between 6 and 14 inches. Using

Silverback Operating II, LLC.
Ann SWD #1

Liner Inspection Closure Report
May 2025

information from the United States Department of Agriculture, the dominant vegetation was determined to be black grama, tobosa, blue grama, and other mixed shrubs. Grasses with shrubs and half-shrubs dominate the historic plant community (United States Department of Agriculture, Natural Resources Conservation Service, 2025). Limited to no vegetation is allowed to grow on the compacted production pad and access road.

4.0 Closure Criteria Determination

The nearest active well to the site is a private well (RA 01343) located approximately 0.57 miles northwest of the site with a recorded depth to groundwater of 69 feet below ground surface (bgs; New Mexico Office of the State Engineer, 2025b). Information pertaining to the depth to ground water determination is included in Appendix B.

There is no surface water present at the site. The nearest significant watercourse, as defined in Subsection P of 19.15.17.7 NMAC, is the North Seven Rivers located approximately 0.93 miles south of the site (United States Fish and Wildlife Service, 2025).

At the site, there are no continuously flowing watercourses or significant watercourses, lakebeds, sinkholes, playa lakes or other critical water or community features as outlined in Paragraph (4) of Subsection C of 19.15.29.12 NMAC.

Silverback Operating II, LLC.
Ann SWD #1

Liner Inspection Closure Report
May 2025

Table 1. Closure Criteria Determination			
Site Specific Conditions		Value	Unit
1	Depth to Groundwater (nearest reference)	69	feet
	Distance between release and nearest DTGW reference	3,055	feet
		0.57	miles
	Date of nearest DTGW reference measurement	July 26, 2004	
2	Within 300 feet of any continuously flowing watercourse or any other significant watercourse	4,935	feet
3	Within 200 feet of any lakebed, sinkhole or playa lake (measured from the ordinary high-water mark)	1,363	feet
4	Within 300 feet from an occupied residence, school, hospital, institution or church	3,327	feet
5	i) Within 500 feet of a spring or a private, domestic fresh water well used by less than five households for domestic or stock watering purposes, or	1,579	feet
	ii) Within 1000 feet of any fresh water well or spring		feet
6	Within incorporated municipal boundaries or within a defined municipal fresh water field covered under a municipal ordinance adopted pursuant to Section 3-27-3 NMSA 1978 as amended, unless the municipality specifically approves	No	(Y/N)
7	Within 300 feet of a wetland	1,040	feet
8	Within the area overlying a subsurface mine	No	(Y/N)
	Distance between release and nearest registered mine	19,450	feet
9	Within an unstable area (Karst Map)	Medium	Critical High Medium Low
	Distance between release and nearest unstable area	12,153	feet
10	Within a 100-year Floodplain	>500	year
	Distance between release and nearest FEMA Zone A (100-year Floodplain)	4,883	feet
11	Soil Type	Re: Reagan-Upton association	
12	Ecological Classification	R042CY153NM — Loamy	
13	Geology	Qp - Piedmont alluvial deposits	
	NMAC 19.15.29.12 E (Table 1) Closure Criteria	<50'	<50' 51-100' >100'

Silverback Operating II, LLC.
Ann SWD #1

Liner Inspection Closure Report
May 2025

The closure criteria determined for the site are associated with the following constituent concentration limits as presented in Table 2.

Table 2. Closure Criteria for Soils Impacted by a Release		
Minimum depth below any point within the horizontal boundary of the release to groundwater less than 10,000 mg/l TDS	Constituent	Limit
No depth-to-groundwater reference within 0.5mi; Within medium karst potential	Chloride	600 mg/kg
	TPH (GRO+DRO+MRO)	100 mg/kg
	BTEX	50 mg/kg
	Benzene	10 mg/kg

TDS – total dissolved solids

TPH – total petroleum hydrocarbons, GRO – gas range organics, DRO – diesel range organics, MRO – motor oil range organics

BTEX – benzene, toluene, ethylbenzene and xylenes

5.0 Remedial Actions Taken

An initial site inspection of the spill was completed on September 9, 2023, which identified the area of the spill specified in the initial C-141 report. During this time all standing fluids had been removed by vacuum trucks. A work crew was later dispatched to remove gravel materials established along the base of the containment and were hauled off to an approved waste management facility. The containment was then power washed all dried mud, hydrocarbons, salt remnants, and other impacted materials from the surfaces of the liner. On May 14, 2025, Silverback provided 48-hour notification of the liner inspection to NMOCD District 2, as required by Subparagraph (a) of Paragraph (5) of Subsection A 19.15.29.11 NMAC. On May 16, 2025, Vertex was on-site to conduct inspection of the lined containment and verify that the liner was intact and had the ability to contain the release. The inspection confirmed the liner remained intact and had the ability to contain the release. The dimensions of the containment, and respective tanks and equipment inside were measured and the calculated volume checked against the reported fluid volume released for the incident. The area of the lined containment was measured out to be approximately 140 feet by 60 feet with a height of 4.5 feet. The total liner inspection surface area is approximately 8,400 square feet. The liner integrity was confirmed and documented in the Liner Inspection Report of Appendix A.

6.0 Closure Request

Vertex recommends no additional remediation action to address the release at the site. The containment liner was intact and contained the release. There are no anticipated risks to human, ecological, or hydrological receptors associated with the release site.

Vertex requests that this incident (nAPP2325637510) be closed as all closure requirements set forth in Subsection E of 19.15.29.12 NMAC have been met. Silverback certifies that all information in this report and appendices are correct and that they have complied with all applicable closure requirements and conditions specified in Division rules and directives to meet NMOCD requirements to obtain closure on the site. Should you have any questions or concerns, please do not hesitate to contact Fernando Rodriguez at (575) 361-4509 or frodriguez@vertex.ca

7.0 References

- Google Inc. (2025). *Google Earth Pro (Version 7.3.3)* [Software]. Retrieved from <https://earth.google.com>
- New Mexico Bureau of Geology and Mineral Resources. (2025). *Interactive Geologic Map*. Retrieved from <https://maps.nmt.edu/>
- New Mexico Department of Surface Water Quality Bureau. (2025). *Assessed and Impaired Waters of New Mexico*. Retrieved from <https://gis.web.env.nm.gov/oem/?map=swqb>
- New Mexico Energy, Minerals and Natural Resources Department. (2025). *OCD Permitting - Spill Search*. Retrieved from <https://wwwapps.emnrd.nm.gov/ocd/ocdpermitting/Data/Spills/Spills.aspx>
- New Mexico Mining and Minerals Division. (2025). *Coal Mine Resources in New Mexico*. Retrieved from <https://nm-emnrd.maps.arcgis.com/apps/webappviewer/index.html?id=5f80f3b0faa545e58fe747cc7b037a93>
- New Mexico Office of the State Engineer. (2025a). *Point of Diversion Location Report - New Mexico Water Rights Reporting System*. Retrieved from <http://nmwrrs.ose.state.nm.us/nmwrrs/wellSurfaceDiversion.html>
- New Mexico Office of the State Engineer. (2025b). *Water Column/Average Depth to Water Report - New Mexico Water Rights Reporting System*. Retrieved from <http://nmwrrs.ose.state.nm.us/nmwrrs/waterColumn.html>
- New Mexico Office of the State Engineer. (2025c). *Well Log/Meter Information Report - New Mexico Water Rights Reporting System*. Retrieved from <http://nmwrrs.ose.state.nm.us/nmwrrs/meterReport.html>
- New Mexico Oil Conservation Division. (2018). *New Mexico Administrative Code – Natural Resources and Wildlife Oil and Gas Releases*. Santa Fe, New Mexico.
- United States Department of Agriculture, Natural Resources Conservation Service. (2025). *Web Soil Survey*. Retrieved from <https://websoilsurvey.nrcs.usda.gov/app/WebSoilSurvey.aspx>
- United States Department of Homeland Security, Federal Emergency Management Agency. (2025). *FEMA Flood Map Service: Search by Address*. Retrieved from <https://msc.fema.gov/portal/search?AddressQuery=malaga%20new%20mexico#searchresultsanchor>
- United States Department of the Interior, Bureau of Land Management. (2018). *New Mexico Cave/Karst*. Retrieved from https://www.nm.blm.gov/shapeFiles/cfo/carlsbad_spatial_data.html
- United States Geological Survey. (2025). *National Water Information System: Web Interface*. Retrieved from <https://waterdata.usgs.gov/nwis>
- United States Fish and Wildlife Service. (2025). *National Wetland Inventory - Surface Waters and Wetlands*. Retrieved from <https://fwspprimary.wim.usgs.gov/wetlands/apps/wetlands-mapper/>

Silverback Operating II, LLC.
Ann SWD #1

Liner Inspection Closure Report
May 2025

8.0 Limitations

This report has been prepared for the sole benefit of Silverback Operating II, LLC. This document may not be used by any other person or entity, with the exception of the New Mexico Oil Conservation Division, without the express written consent of Vertex Resource Services Inc. (Vertex) and Silverback Operating II, LLC. Any use of this report by a third party, or any reliance on decisions made based on it, or damages suffered as a result of the use of this report are the sole responsibility of the user.

The information and conclusions contained in this report are based upon work undertaken by trained professional and technical staff in accordance with generally accepted scientific practices current at the time the work was performed. The conclusions and recommendations presented represent the best judgement of Vertex based on the data collected during the assessment. Due to the nature of the assessment and the data available, Vertex cannot warrant against undiscovered environmental liabilities. Conclusions and recommendations presented in this report should not be considered legal advice.

APPENDIX A – Liner Inspection Report with Photographs

Liner Inspection Report



Client	Silverback Operating II, LLC	Inspection Date	5/16/2025
Site Location Name	Ann SWD #1	API #	30-015-23580
Client Contact Name	Rafael Alvizo	Project Owner	
Client Contact Phone #		Project Manager	
Project Reference #			
Unique Project ID			

Summary of Times

Arrived at Site

Departed Site

Field Notes

- Photographs of release during initial site assessment and prior to lined containment clean-up. (Page 2)
- Photographs of lined containment after gravel removal and clean-up activities (Pages 3-9)

Next Steps & Recommendations

1

Liner Inspection Report



Initial Release Photographs (Prior to Clean-up Activities)

Viewing Direction: Southeast



Northwest corner of lined containment

Viewing Direction: South



Northeast corner of lined containment

Viewing Direction: Northeast



Southwest corner of lined containment

Viewing Direction: Northwest



Southeast corner of lined containment

Liner Inspection Report



Lined Containment Photographs After Clean-up Activities

Viewing Direction: Northwest



Outer walls of lined containment (south wall)

Viewing Direction: Northwest



Outer walls of lined containment (south wall)

Viewing Direction: Northeast



Outer walls of lined containment (south wall)

Viewing Direction: Northeast



Southwest corner of lined containment

Liner Inspection Report



Lined Containment Photographs After Clean-up Activities

Viewing Direction: North



Outer walls of lined containment (west wall)

Viewing Direction: Southeast



Outer walls of lined containment (west wall)

Viewing Direction: North



Outer walls of lined containment (west wall)

Viewing Direction: Southwest



Outer walls of lined containment (west wall)

Liner Inspection Report



Lined Containment Photographs After Clean-up Activities

Viewing Direction: Northeast



Northwest corner of lined containment

Viewing Direction: East



Outer walls of lined containment (north wall)

Viewing Direction: South



Outer walls of lined containment (north wall)

Viewing Direction: Southwest



Outer walls of lined containment (north wall)

Liner Inspection Report



Lined Containment Photographs After Clean-up Activities

Viewing Direction: South



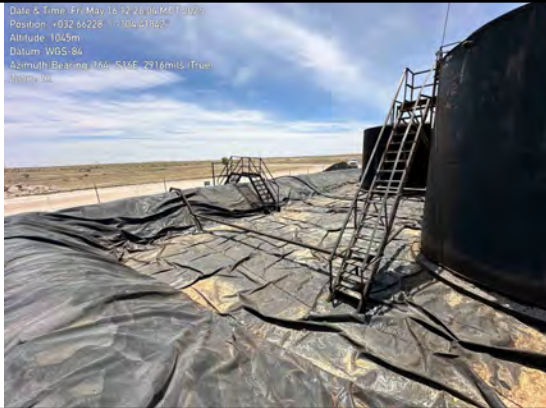
Outer walls of lined containment (east wall)

Viewing Direction: Southwest



Northeast corner of lined containment

Viewing Direction: Southeast



Northwest areas of lined containment

Viewing Direction: Southwest



Outer walls of lined containment (east wall)

Liner Inspection Report



Lined Containment Photographs After Clean-up Activities

Viewing Direction: Northwest



Outer walls of lined containment (east wall)

Viewing Direction: Northwest



Southeast corner of lined containment

Viewing Direction: West



Containment areas between tanks

Viewing Direction: North



Containment areas between tanks

Liner Inspection Report



Lined Containment Photographs After Clean-up Activities

Viewing Direction: Northeast



Inside walls of lined containment

Viewing Direction: West



Containment areas between tanks

Viewing Direction: South



Inside walls of lined containment

Viewing Direction: Northeast



Inside walls of lined containment

Liner Inspection Report



Lined Containment Photographs After Clean-up Activities

Viewing Direction: South



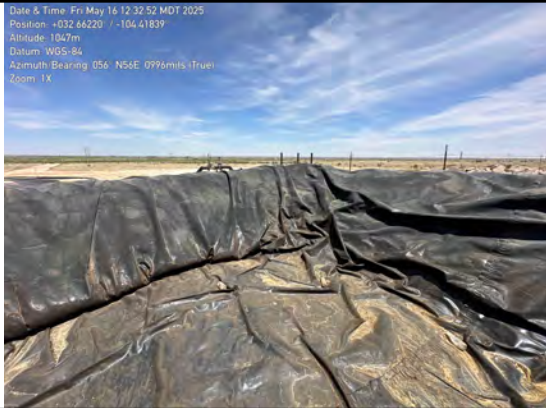
Containment areas between tanks

Viewing Direction: Northwest



Gravel removed and hauled to disposal

Viewing Direction: Northeast



Inside walls of lined containment

Viewing Direction: South



Containment areas between tanks

Liner Inspection Report



Daily Site Visit Signature

Inspector: Fernando Rodriguez

Signature:


Signature

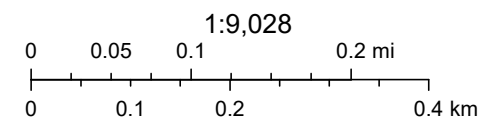
APPENDIX B – Closure Criteria Determination

Ann SWD #1 - DTGW Reference



5/14/2025, 9:53:25 AM

● OSE Water PODs



Esri, HERE, Garmin, iPC, Maxar



New Mexico Office of the State Engineer

Water Column/Average Depth to Water

(A CLW##### in the POD suffix indicates the POD has been replaced & no longer serves a water right file.)

(R=POD has been replaced, O=orphaned, C=the file is closed)

(quarters are smallest to largest)

POD Number	Code	Sub basin	County	Q64	Q16	Q4	Sec	Tws	Range	X	Y	Map	(meters)	(In feet)		
													Distance	Well Depth	Depth Water	Water Column
RA 01343		RA	ED	NE	NW	NW	18	19S	26E	553777.0	3614525.0 *		932	440	69	371
RA 07817	R	RA	ED	NE	NW	NE	19	19S	26E	554592.0	3612915.0 *		1059	300	220	80
RA 07817 CLW	O	RA	ED	NE	NW	NE	19	19S	26E	554592.0	3612915.0 *		1059	275	130	145
RA 07817 POD2		RA	ED	NE	NW	NE	19	19S	26E	554592.0	3612915.0 *		1059	275	130	145
RA 09077		RA	ED	NE	NW	NE	19	19S	26E	554592.0	3612915.0 *		1059	200		
RA 10262		RA	ED	NE	NE	NE	19	19S	26E	554994.0	3612917.0 *		1154	200	85	115
RA 08612		RA	ED	NW	NE	NW	19	19S	26E	553989.0	3612912.0 *		1190	221	80	141
RA 13420 POD1		RA	ED	SW	SE	SW	08	19S	26E	555517.0	3614656.6		1202	55		
RA 08611		RA	ED	NW	NW	NW	19	19S	26E	553583.0	3612909.0 *		1423	235	90	145
RA 09988		RA	ED	NE	SE	NW	19	19S	26E	554190.0	3612507.0 *		1504	100	65	35
RA 09294		RA	ED	SW	SE	SE	13	19S	25E	553180.0	3613114.0 *		1598	194	76	118

Average Depth to Water: 105 feet

Minimum Depth: 65 feet

Maximum Depth: 220 feet

Record Count: 11

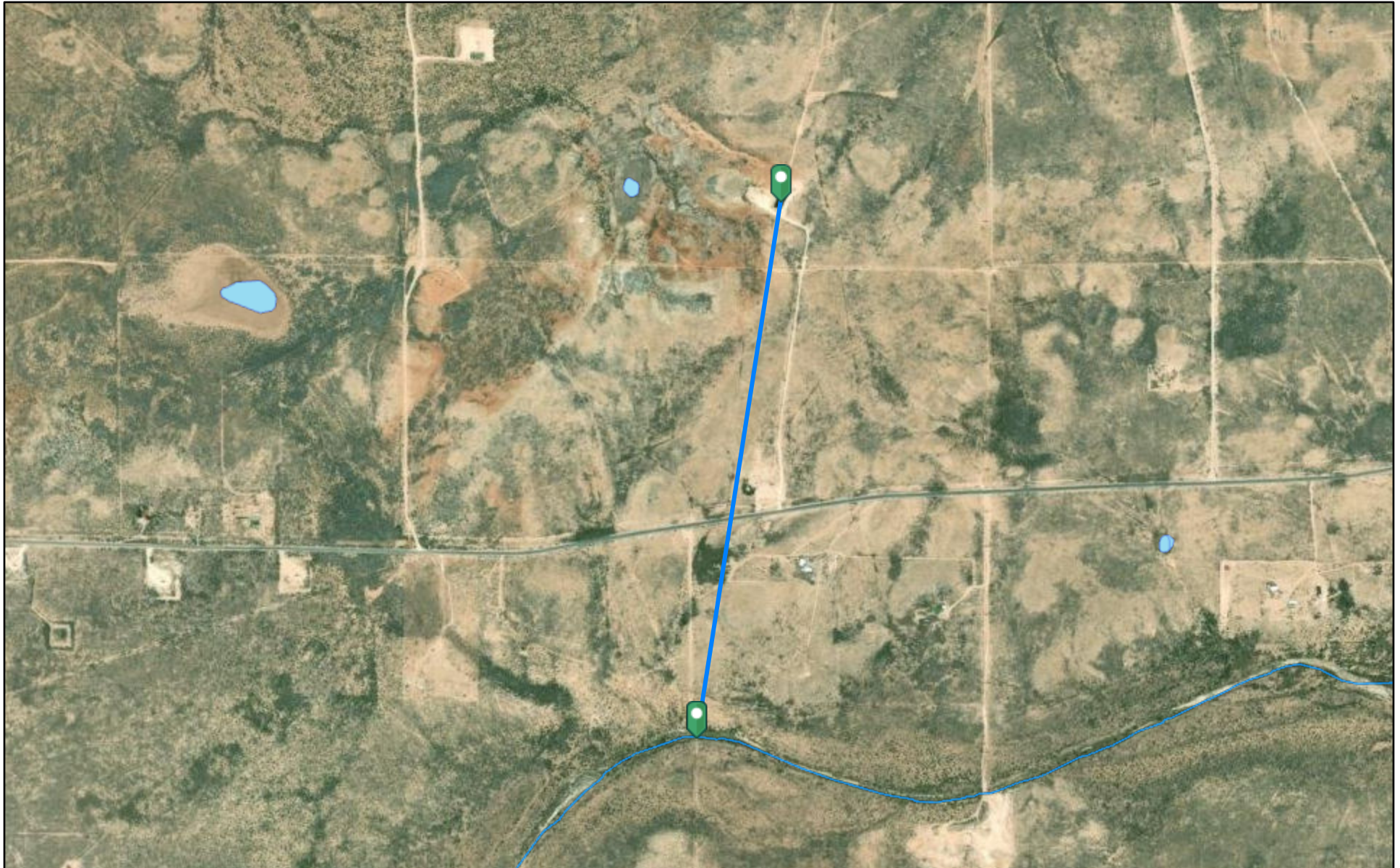
UTM Filters (in meters):

Easting: 554528
Northing: 3613973
Radius: 1616.0



* UTM location was derived from PLSS - see Help

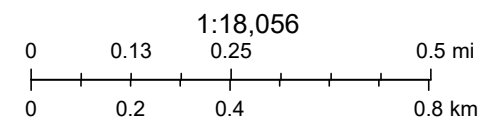
The data is furnished by the NMOSE/ISC and is accepted by the recipient with the expressed understanding that the OSE/ISC make no warranties, expressed or implied, concerning the accuracy, completeness, reliability, usability, or suitability for any particular purpose of the data.

Ann SWD #1 - Watercourse



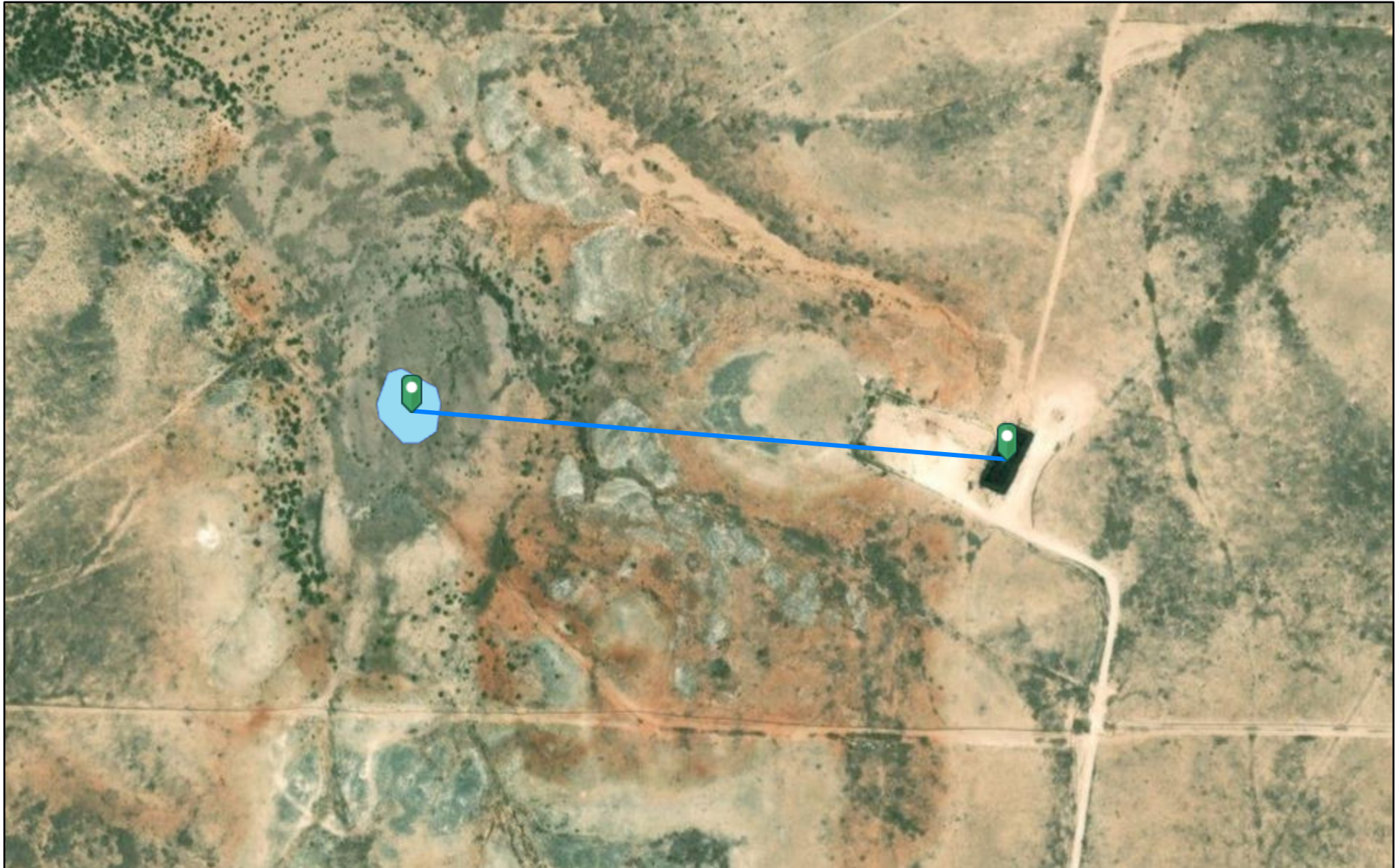
5/14/2025, 10:03:16 AM

-  OSW Water Bodys
-  OSE Streams



Esri, HERE, Garmin, iPC, Maxar, NM OSE

Ann SWD #1 - Lake



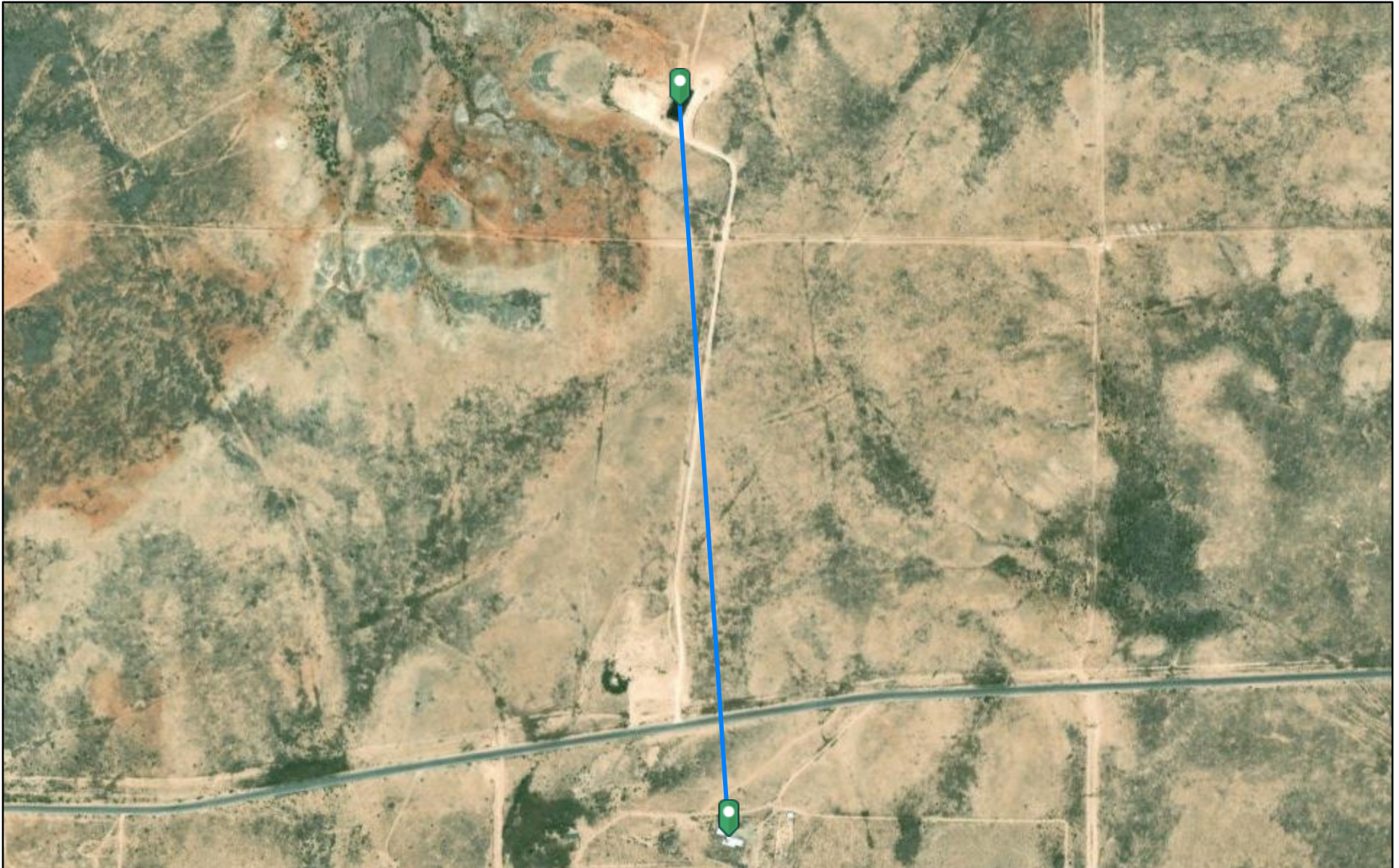
5/14/2025, 10:06:12 AM

 OSW Water Bodys

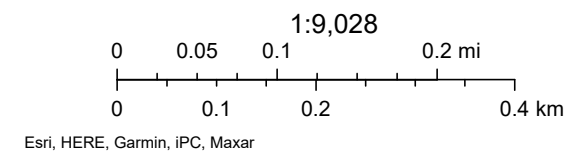
1:4,514
0 0.03 0.07 0.13 mi
0 0.05 0.1 0.2 km

Esri, HERE, Garmin, iPC, Maxar, NM OSE

Ann SWD #1 - Residence



5/14/2025, 10:08:34 AM





New Mexico Office of the State Engineer

Active & Inactive Points of Diversion

			(acre ft per annum)					(R=POD has been replaced and no longer serves this file, C=the file is closed)			(quarters are 1=NW 2=NE 3=SW 4=SE) (quarters are smallest to largest)						(NAD83 UTM in meters)		(meters)	
WR File Nbr	Sub basin	Use	Diversion	Owner	County	POD Number	Well Tag	Code	Grant	Source	q64	q16	q4	Sec	Tw	Range	X	Y	Map	Distance
RA 12970	RA	DOM	1.000	JEFFREYCRAWFORD	ED	RA 12970 POD1	20D48				SW	NW	NE	13	22S	26E	554334.3	3614412.4		480.2
RA 05415	RA	PRO	0.000	JOHN A.YATES	ED	RA 05415						NE	NE	18	19S	26E	554884.0	3614436.0 *		584.0
RA 01343	RA	IRR	273.000	CHASE FARMS, LLC	ED	RA 01343				Shallow	NE	NW	NW	18	19S	26E	553777.0	3614525.0 *		932.0
RA 07817	RA	DOM	3.000	ROBERT K.LOFFI	ED	RA 07817		R		Shallow	NE	NW	NE	19	19S	26E	554592.0	3612915.0 *		1,059.9
					ED	RA 07817 POD2				Shallow	NE	NW	NE	19	19S	26E	554592.0	3612915.0 *		1,059.9
RA 09077	RA	DOM	3.000	MARK G.SPOLTON	ED	RA 09077					NE	NW	NE	19	19S	26E	554592.0	3612915.0 *		1,059.9
RA 10262	RA	DOL	3.000	RHONDAWILSON	ED	RA 10262				Shallow	NE	NE	NE	19	19S	26E	554994.0	3612917.0 *		1,154.2
RA 08612	RA	DOM	3.000	JOE L.COX	ED	RA 08612				Shallow	NW	NE	NW	19	19S	26E	553989.0	3612912.0 *		1,190.1
RA 13420	RA	MON	0.000	SPUR ENERGY PARTNERS, LLC	ED	RA 13420 POD1	NA				SW	SE	SW	08	19S	26E	555517.0	3614656.6		1,202.3
RA 08611	RA	DOL	3.000	JOSEPH B.HUBER	ED	RA 08611				Shallow	NW	NW	NW	19	19S	26E	553583.0	3612909.0 *		1,423.1
RA 09988	RA	DOM	3.000	TREVORDOMKE	ED	RA 09988				Shallow	NE	SE	NW	19	19S	26E	554190.0	3612507.0 *		1,504.5
RA 07864	RA	DOL	3.000	J.T.ROSS	ED	RA 07864							SE	13	19S	25E	553081.0	3613417.0 *		1,550.1
RA 09294	RA		0.000	JOECOX	ED	RA 09294				Shallow	SW	SE	SE	13	19S	25E	553180.0	3613114.0 *		1,598.4

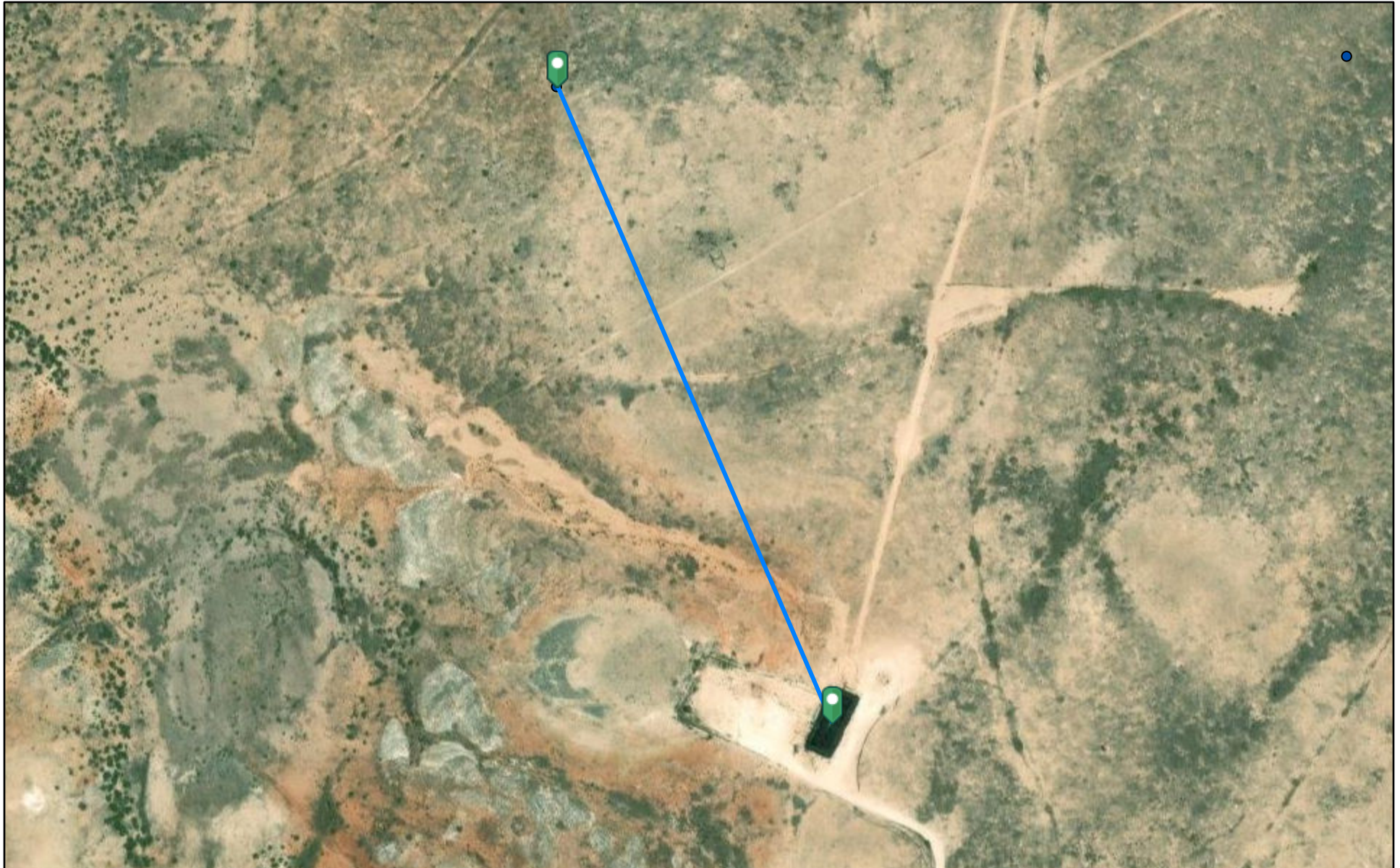
Record Count: 13

Filters Applied:

UTM Filters (in meters):

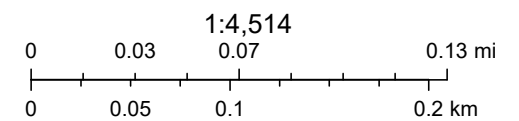
Easting: 554528

Ann SWD #1 - Fresh Water Well



5/14/2025, 10:30:55 AM

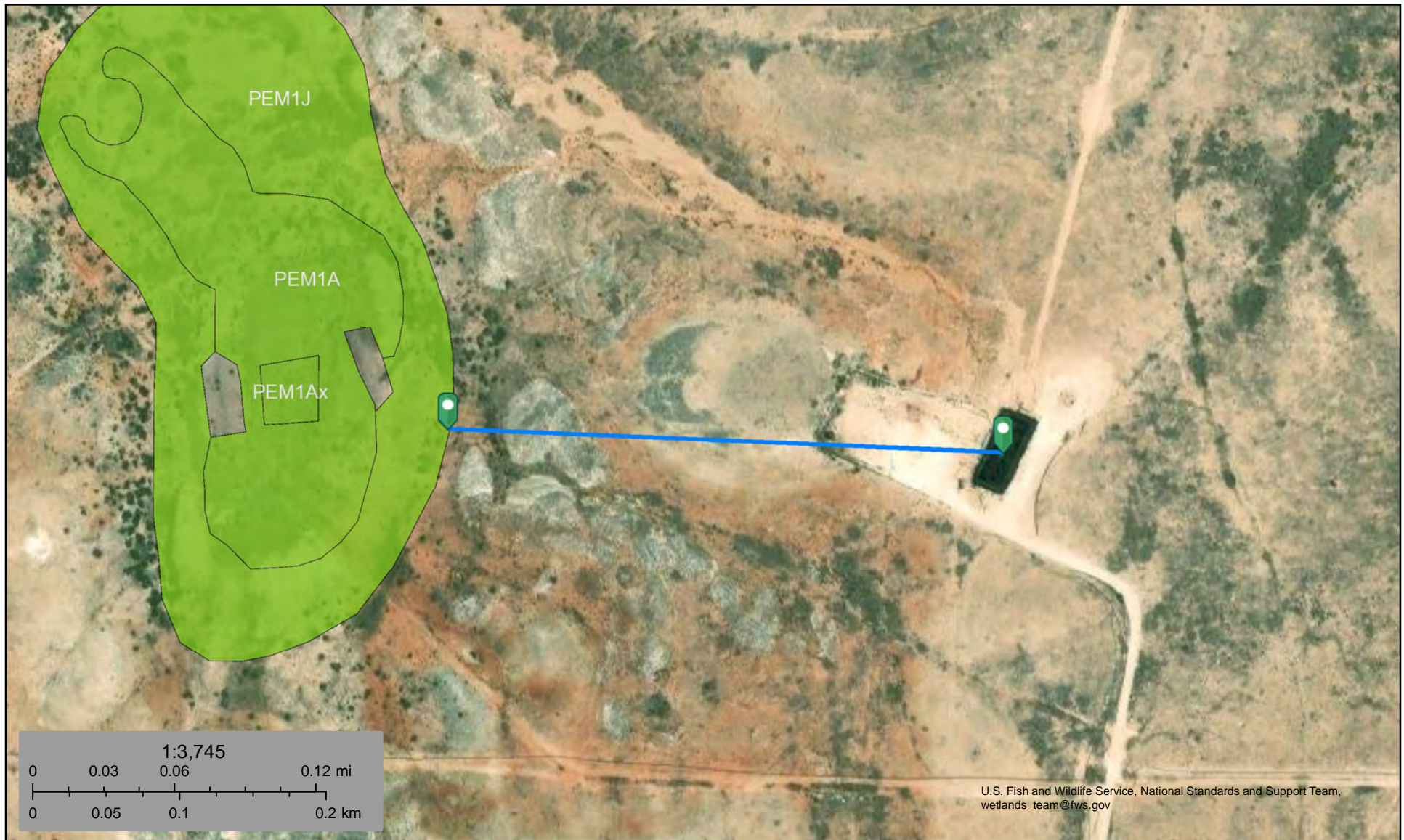
● OSE Water PODs



Esri, HERE, Garmin, iPC, Maxar



Ann SWD #1 - Wetland

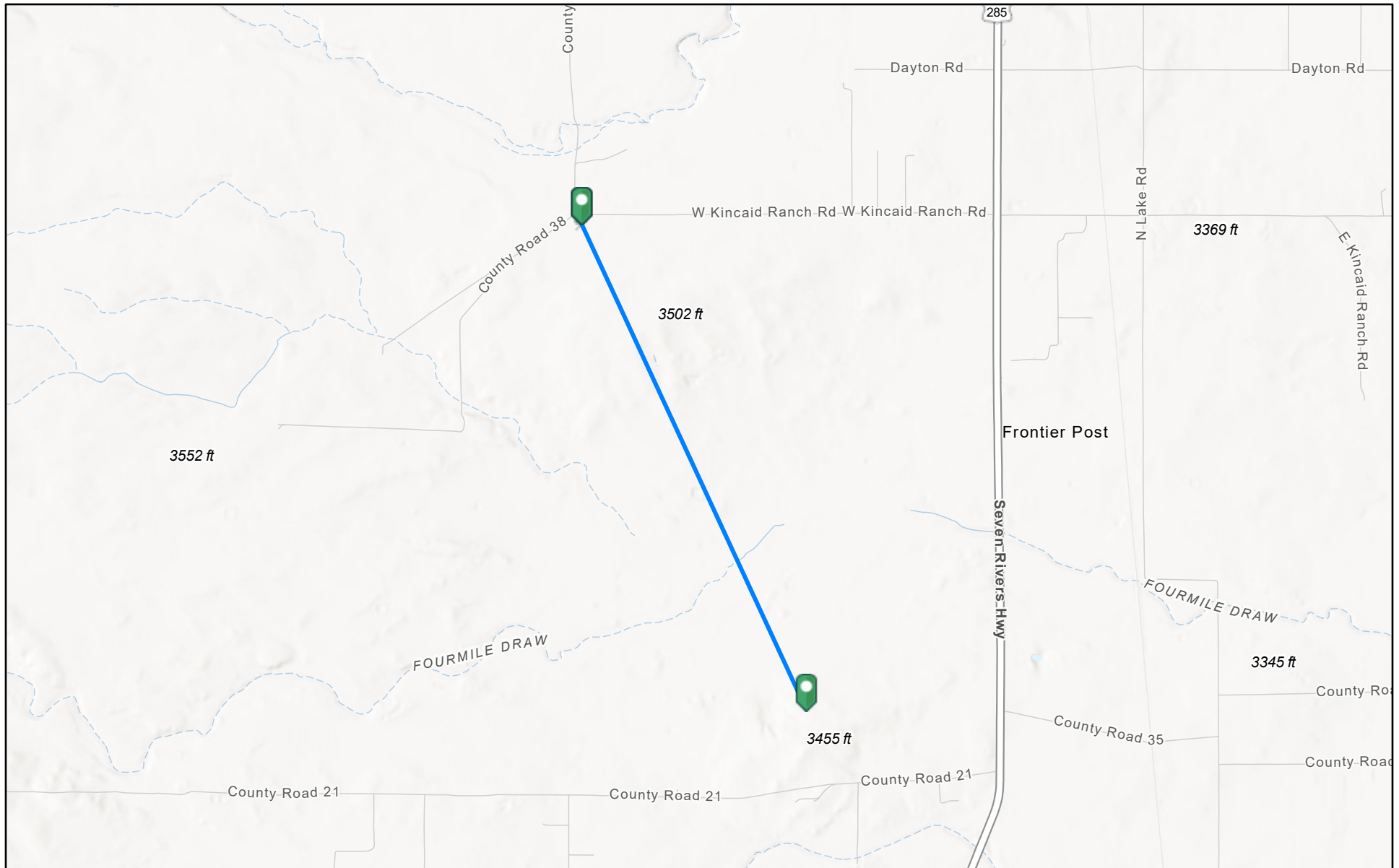


U.S. Fish and Wildlife Service, National Standards and Support Team,
wetlands_team@fws.gov

May 14, 2025

This map is for general reference only. The US Fish and Wildlife Service is not responsible for the accuracy or currentness of the base data shown on this map. All wetlands related data should be used in accordance with the layer metadata found on the Wetlands Mapper web site.

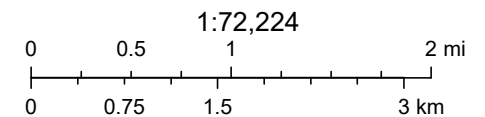
Ann SWD #1 - Mine



5/14/2025, 11:49:30 AM

Registered Mines

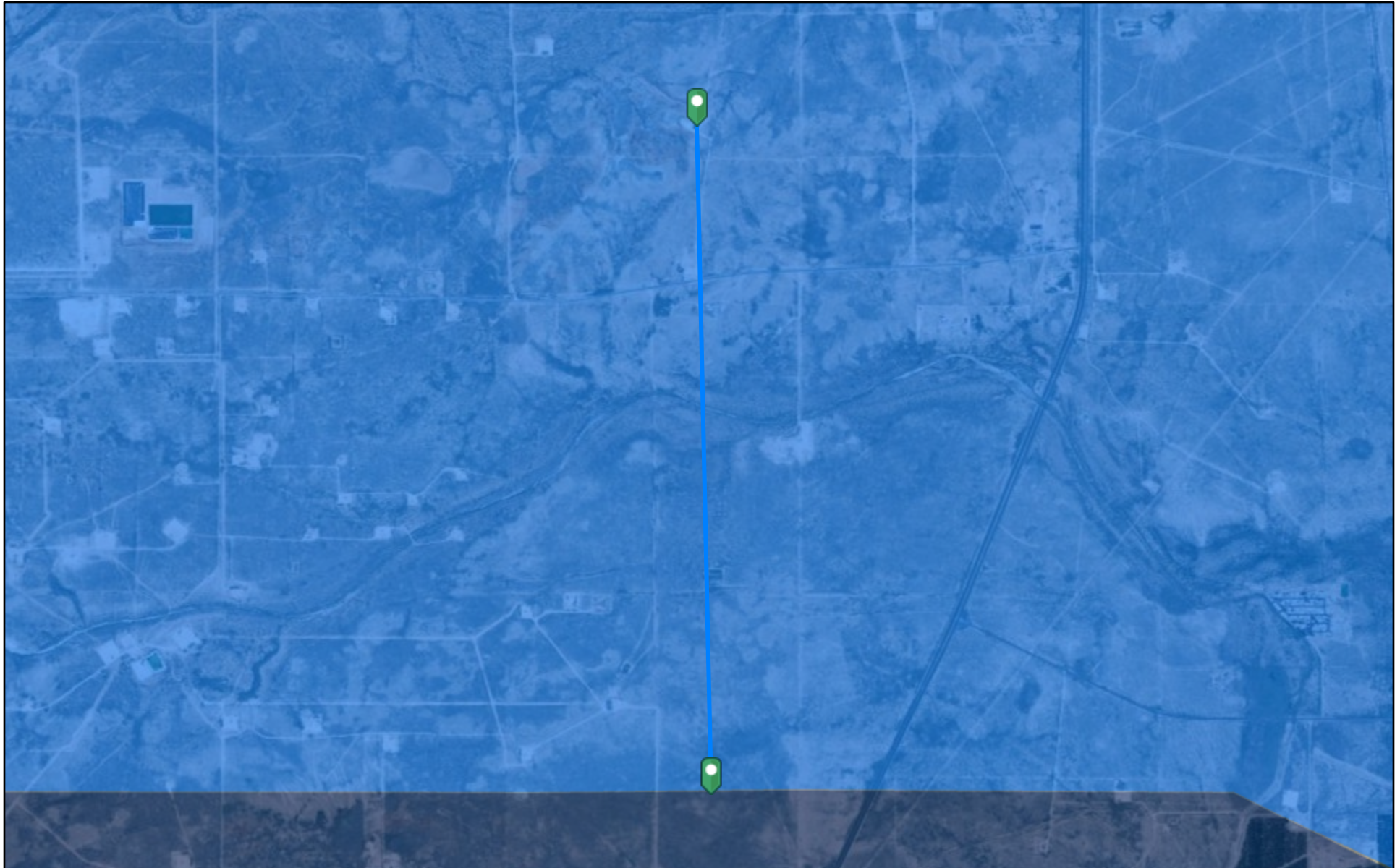
✕ Aggregate, Stone etc.



Esri, NASA, NGA, USGS, FEMA, Sources: Esri, TomTom, Garmin, FAO, NOAA, USGS, © OpenStreetMap contributors, and the GIS User Community

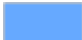

EMNRD MMD GIS Coordinator

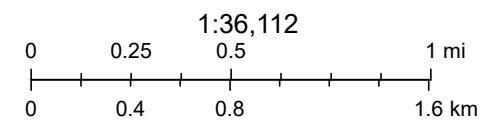
Ann SWD #1 - Karst Potential



5/14/2025, 11:59:39 AM

Karst Occurrence Potential

	Medium
	High



BLM, OCD, New Mexico Tech, Esri, HERE, Garmin, Maxar

National Flood Hazard Layer FIRMMette



104°25'25"W 32°39'59"N



0 250 500 1,000 1,500 2,000 Feet

1:6,000

104°24'48"W 32°39'28"N

Released to Imaging: 7/8/2025 2:22:16 PM

Basemap Imagery Source: USGS National Map 2023

Legend

SEE FIS REPORT FOR DETAILED LEGEND AND INDEX MAP FOR FIRM PANEL LAYOUT

SPECIAL FLOOD HAZARD AREAS		Without Base Flood Elevation (BFE) Zone A, V, A99
		With BFE or Depth Zone AE, AO, AH, VE, AR
		Regulatory Floodway
OTHER AREAS OF FLOOD HAZARD		0.2% Annual Chance Flood Hazard, Areas of 1% annual chance flood with average depth less than one foot or with drainage areas of less than one square mile Zone X
		Future Conditions 1% Annual Chance Flood Hazard Zone X
		Area with Reduced Flood Risk due to Levee. See Notes. Zone X
		Area with Flood Risk due to Levee Zone D
OTHER AREAS		NO SCREEN Area of Minimal Flood Hazard Zone X
		Effective LOMRs
		Area of Undetermined Flood Hazard Zone D
GENERAL STRUCTURES		Channel, Culvert, or Storm Sewer
		Levee, Dike, or Floodwall
OTHER FEATURES		20.2 Cross Sections with 1% Annual Chance Water Surface Elevation
		17.5
		Coastal Transect
		Base Flood Elevation Line (BFE)
		Limit of Study
		Jurisdiction Boundary
		Coastal Transect Baseline
MAP PANELS		Digital Data Available
		No Digital Data Available
		Unmapped



The pin displayed on the map is an approximate point selected by the user and does not represent an authoritative property location.

This map complies with FEMA's standards for the use of digital flood maps if it is not void as described below. The basemap shown complies with FEMA's basemap accuracy standards

The flood hazard information is derived directly from the authoritative NFHL web services provided by FEMA. This map was exported on 5/14/2025 at 5:59 PM and does not reflect changes or amendments subsequent to this date and time. The NFHL and effective information may change or become superseded by new data over time.

This map image is void if the one or more of the following map elements do not appear: basemap imagery, flood zone labels, legend, scale bar, map creation date, community identifiers, FIRM panel number, and FIRM effective date. Map images for unmapped and unmodernized areas cannot be used for regulatory purposes.

Soil Map—Eddy Area, New Mexico
(Ann SWD #1)Natural Resources
Conservation ServiceWeb Soil Survey
National Cooperative Soil Survey9/14/2023
Page 1 of 3

Soil Map—Eddy Area, New Mexico
(Ann SWD #1)

MAP LEGEND

Area of Interest (AOI)

 Area of Interest (AOI)

Soils

 Soil Map Unit Polygons

 Soil Map Unit Lines

 Soil Map Unit Points

Special Point Features



Blowout



Borrow Pit



Clay Spot



Closed Depression



Gravel Pit



Gravelly Spot



Landfill



Lava Flow



Marsh or swamp



Mine or Quarry



Miscellaneous Water



Perennial Water



Rock Outcrop



Saline Spot



Sandy Spot



Severely Eroded Spot



Sinkhole



Slide or Slip



Sodic Spot



Spoil Area



Stony Spot



Very Stony Spot



Wet Spot



Other



Special Line Features

Water Features



Streams and Canals

Transportation



Rails



Interstate Highways



US Routes



Major Roads



Local Roads

Background



Aerial Photography

MAP INFORMATION

The soil surveys that comprise your AOI were mapped at 1:20,000.

Warning: Soil Map may not be valid at this scale.

Enlargement of maps beyond the scale of mapping can cause misunderstanding of the detail of mapping and accuracy of soil line placement. The maps do not show the small areas of contrasting soils that could have been shown at a more detailed scale.

Please rely on the bar scale on each map sheet for map measurements.

Source of Map: Natural Resources Conservation Service

Web Soil Survey URL:

Coordinate System: Web Mercator (EPSG:3857)

Maps from the Web Soil Survey are based on the Web Mercator projection, which preserves direction and shape but distorts distance and area. A projection that preserves area, such as the Albers equal-area conic projection, should be used if more accurate calculations of distance or area are required.

This product is generated from the USDA-NRCS certified data as of the version date(s) listed below.

Soil Survey Area: Eddy Area, New Mexico

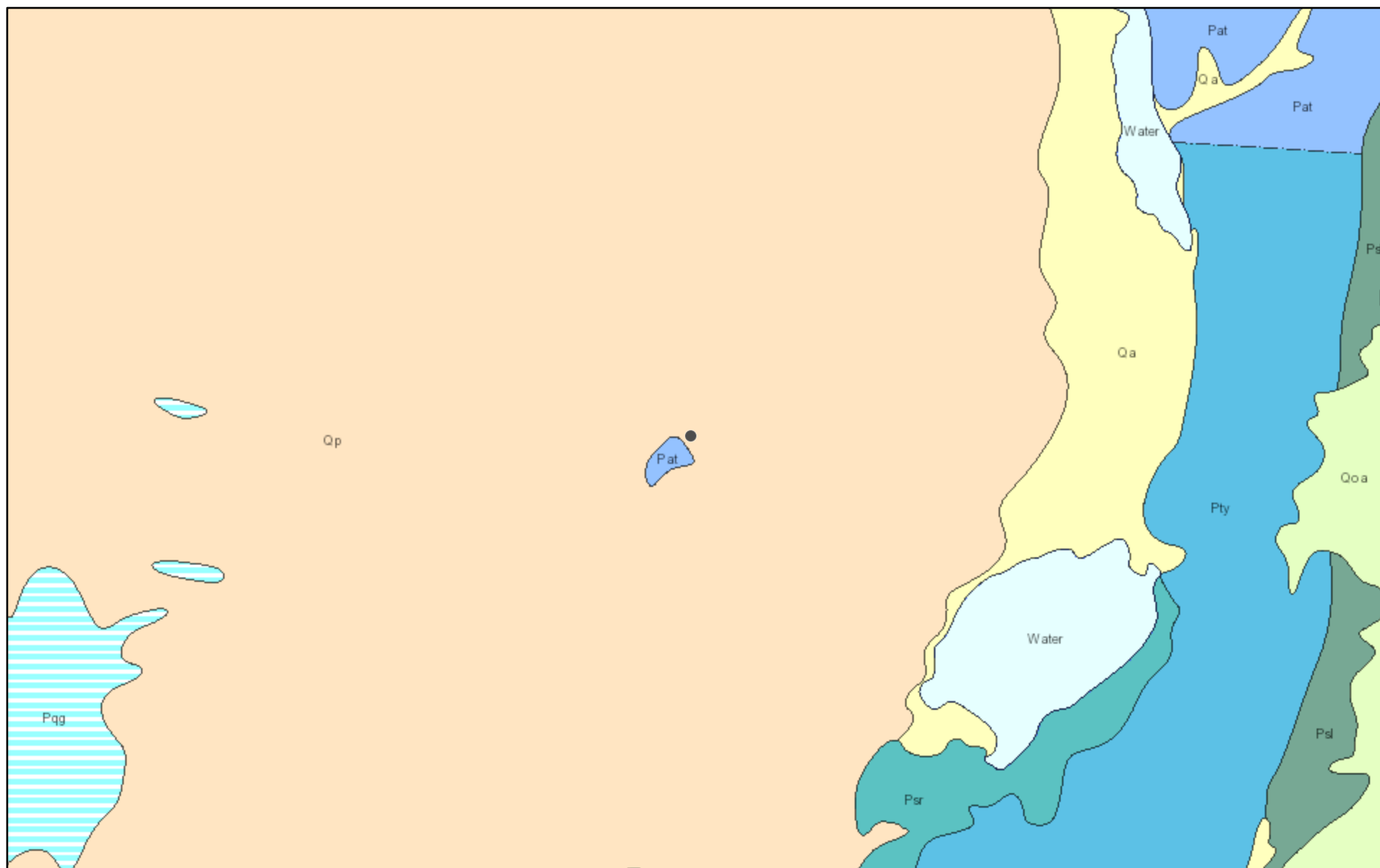
Survey Area Data: Version 18, Sep 8, 2022

Soil map units are labeled (as space allows) for map scales 1:50,000 or larger.

Date(s) aerial images were photographed: Nov 12, 2022—Dec 2, 2022

The orthophoto or other base map on which the soil lines were compiled and digitized probably differs from the background imagery displayed on these maps. As a result, some minor shifting of map unit boundaries may be evident.

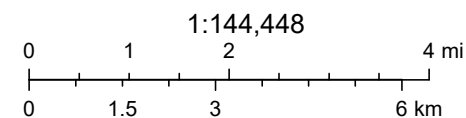
Ann SWD #1



9/14/2023, 5:07:41 PM

Lithologic Units

- Playa—Alluvium and evaporite deposits (Holocene)
- Water—Perennial standing water
- Qa—Alluvium (Holocene to upper Pleistocene)



Esri, NASA, NGA, USGS, NMBGMR, USGS The National Map: National Boundaries Dataset, 3DEP Elevation Program, Geographic Names

ArcGIS Web AppBuilder

USGS The National Map: National Boundaries Dataset, 3DEP Elevation Program, Geographic Names Information System, National Hydrography Dataset, National Land Cover Database, National Structures Dataset, and National Transportation Dataset; USGS Global

Sante Fe Main Office
Phone: (505) 476-3441

General Information
Phone: (505) 629-6116

Online Phone Directory
<https://www.emnrd.nm.gov/ocd/contact-us>

State of New Mexico
Energy, Minerals and Natural Resources
Oil Conservation Division
1220 S. St Francis Dr.
Santa Fe, NM 87505

QUESTIONS

Action 465761

QUESTIONS

Operator: Silverback Operating II, LLC 1001 W. Wilshire Blvd Oklahoma City, OK 73112	OGRID: 330968
	Action Number: 465761
	Action Type: [C-141] Remediation Closure Request C-141 (C-141-v-Closure)

QUESTIONS

Prerequisites	
Incident ID (n#)	nAPP2325637510
Incident Name	NAPP2325637510 ANN SWD #1 @ 0
Incident Type	Release Other
Incident Status	Remediation Closure Report Received

Location of Release Source

Please answer all the questions in this group.

Site Name	ANN SWD #1
Date Release Discovered	09/09/2023
Surface Owner	Private

Incident Details

Please answer all the questions in this group.

Incident Type	Release Other
Did this release result in a fire or is the result of a fire	No
Did this release result in any injuries	No
Has this release reached or does it have a reasonable probability of reaching a watercourse	No
Has this release endangered or does it have a reasonable probability of endangering public health	No
Has this release substantially damaged or will it substantially damage property or the environment	No
Is this release of a volume that is or may with reasonable probability be detrimental to fresh water	No

Nature and Volume of Release

Material(s) released, please answer all that apply below. Any calculations or specific justifications for the volumes provided should be attached to the follow-up C-141 submission.

Crude Oil Released (bbls) Details	Cause: Overflow - Tank, Pit, Etc. Tank (Any) Crude Oil Released: 80 BBL Recovered: 80 BBL Lost: 0 BBL.
Produced Water Released (bbls) Details	Cause: Overflow - Tank, Pit, Etc. Tank (Any) Produced Water Released: 360 BBL Recovered: 360 BBL Lost: 0 BBL.
Is the concentration of chloride in the produced water >10,000 mg/l	Yes
Condensate Released (bbls) Details	Not answered.
Natural Gas Vented (Mcf) Details	Not answered.
Natural Gas Flared (Mcf) Details	Not answered.
Other Released Details	Not answered.
Are there additional details for the questions above (i.e. any answer containing Other, Specify, Unknown, and/or Fire, or any negative lost amounts)	Not answered.

Sante Fe Main Office
Phone: (505) 476-3441

General Information
Phone: (505) 629-6116

Online Phone Directory
<https://www.emnrd.nm.gov/ocd/contact-us>

State of New Mexico
Energy, Minerals and Natural Resources
Oil Conservation Division
1220 S. St Francis Dr.
Santa Fe, NM 87505

QUESTIONS, Page 2

Action 465761

QUESTIONS (continued)

Operator: Silverback Operating II, LLC 1001 W. Wilshire Blvd Oklahoma City, OK 73112	OGRID: 330968
	Action Number: 465761
	Action Type: [C-141] Remediation Closure Request C-141 (C-141-v-Closure)

QUESTIONS

Nature and Volume of Release (continued)	
Is this a gas only submission (i.e. only significant Mcf values reported)	No, according to supplied volumes this does not appear to be a "gas only" report.
Was this a major release as defined by Subsection A of 19.15.29.7 NMAC	Yes
Reasons why this would be considered a submission for a notification of a major release	From paragraph A. "Major release" determine using: (1) an unauthorized release of a volume, excluding gases, of 25 barrels or more.
With the implementation of the 19.15.27 NMAC (05/25/2021), venting and/or flaring of natural gas (i.e. gas only) are to be submitted on the C-129 form.	

Initial Response

The responsible party must undertake the following actions immediately unless they could create a safety hazard that would result in injury.

The source of the release has been stopped	True
The impacted area has been secured to protect human health and the environment	True
Released materials have been contained via the use of berms or dikes, absorbent pads, or other containment devices	True
All free liquids and recoverable materials have been removed and managed appropriately	True
If all the actions described above have not been undertaken, explain why	Not answered.

Per Paragraph (4) of Subsection B of 19.15.29.8 NMAC the responsible party may commence remediation immediately after discovery of a release. If remediation has begun, please prepare and attach a narrative of actions to date in the follow-up C-141 submission. If remedial efforts have been successfully completed or if the release occurred within a lined containment area (see Subparagraph (a) of Paragraph (5) of Subsection A of 19.15.29.11 NMAC), please prepare and attach all information needed for closure evaluation in the follow-up C-141 submission.

I hereby certify that the information given above is true and complete to the best of my knowledge and understand that pursuant to OCD rules and regulations all operators are required to report and/or file certain release notifications and perform corrective actions for releases which may endanger public health or the environment. The acceptance of a C-141 report by the OCD does not relieve the operator of liability should their operations have failed to adequately investigate and remediate contamination that pose a threat to groundwater, surface water, human health or the environment. In addition, OCD acceptance of a C-141 report does not relieve the operator of responsibility for compliance with any other federal, state, or local laws and/or regulations.

I hereby agree and sign off to the above statement	Name: Justin Carter Title: Landman Email: jcarter@novooog.com Date: 05/21/2025
--	---

Sante Fe Main Office
Phone: (505) 476-3441

General Information
Phone: (505) 629-6116

Online Phone Directory
<https://www.emnrd.nm.gov/ocd/contact-us>

State of New Mexico
Energy, Minerals and Natural Resources
Oil Conservation Division
1220 S. St Francis Dr.
Santa Fe, NM 87505

QUESTIONS, Page 3

Action 465761

QUESTIONS (continued)

Operator: Silverback Operating II, LLC 1001 W. Wilshire Blvd Oklahoma City, OK 73112	OGRID:
	330968
	Action Number:
	465761
Action Type:	
[C-141] Remediation Closure Request C-141 (C-141-v-Closure)	

QUESTIONS

Site Characterization	
<i>Please answer all the questions in this group (only required when seeking remediation plan approval and beyond). This information must be provided to the appropriate district office no later than 90 days after the release discovery date.</i>	
What is the shallowest depth to groundwater beneath the area affected by the release in feet below ground surface (ft bgs)	Between 51 and 75 (ft.)
What method was used to determine the depth to ground water	NM OSE iWaters Database Search
Did this release impact groundwater or surface water	No
What is the minimum distance, between the closest lateral extents of the release and the following surface areas:	
A continuously flowing watercourse or any other significant watercourse	Between ½ and 1 (mi.)
Any lakebed, sinkhole, or playa lake (measured from the ordinary high-water mark)	Between 1000 (ft.) and ½ (mi.)
An occupied permanent residence, school, hospital, institution, or church	Between 1 and 5 (mi.)
A spring or a private domestic fresh water well used by less than five households for domestic or stock watering purposes	Between 1000 (ft.) and ½ (mi.)
Any other fresh water well or spring	Between 1000 (ft.) and ½ (mi.)
Incorporated municipal boundaries or a defined municipal fresh water well field	Greater than 5 (mi.)
A wetland	Between 1000 (ft.) and ½ (mi.)
A subsurface mine	Between 1 and 5 (mi.)
An (non-karst) unstable area	Between 1 and 5 (mi.)
Categorize the risk of this well / site being in a karst geology	Medium
A 100-year floodplain	Between 1 and 5 (mi.)
Did the release impact areas not on an exploration, development, production, or storage site	No

Remediation Plan	
<i>Please answer all the questions that apply or are indicated. This information must be provided to the appropriate district office no later than 90 days after the release discovery date.</i>	
Requesting a remediation plan approval with this submission	Yes
<i>Attach a comprehensive report demonstrating the lateral and vertical extents of soil contamination associated with the release have been determined, pursuant to 19.15.29.11 NMAC and 19.15.29.13 NMAC.</i>	
Have the lateral and vertical extents of contamination been fully delineated	Yes
Was this release entirely contained within a lined containment area	Yes
<i>Per Subsection B of 19.15.29.11 NMAC unless the site characterization report includes completed efforts at remediation, the report must include a proposed remediation plan in accordance with 19.15.29.12 NMAC, which includes the anticipated timelines for beginning and completing the remediation.</i>	
On what estimated date will the remediation commence	05/16/2025
On what date will (or did) the final sampling or liner inspection occur	05/16/2025
On what date will (or was) the remediation complete(d)	05/16/2025
What is the estimated surface area (in square feet) that will be remediated	0
What is the estimated volume (in cubic yards) that will be remediated	0
<i>These estimated dates and measurements are recognized to be the best guess or calculation at the time of submission and may (be) change(d) over time as more remediation efforts are completed.</i>	
<i>The OCD recognizes that proposed remediation measures may have to be minimally adjusted in accordance with the physical realities encountered during remediation. If the responsible party has any need to significantly deviate from the remediation plan proposed, then it should consult with the division to determine if another remediation plan submission is required.</i>	

Sante Fe Main Office
Phone: (505) 476-3441

General Information
Phone: (505) 629-6116

Online Phone Directory
<https://www.emnrd.nm.gov/ocd/contact-us>

State of New Mexico
Energy, Minerals and Natural Resources
Oil Conservation Division
1220 S. St Francis Dr.
Santa Fe, NM 87505

QUESTIONS, Page 4

Action 465761

QUESTIONS (continued)

Operator: Silverback Operating II, LLC 1001 W. Wilshire Blvd Oklahoma City, OK 73112	OGRID: 330968
	Action Number: 465761
	Action Type: [C-141] Remediation Closure Request C-141 (C-141-v-Closure)

QUESTIONS

Remediation Plan (continued)	
<i>Please answer all the questions that apply or are indicated. This information must be provided to the appropriate district office no later than 90 days after the release discovery date.</i>	
This remediation will (or is expected to) utilize the following processes to remediate / reduce contaminants:	
(Select all answers below that apply.)	
Is (or was) there affected material present needing to be removed	Yes
Is (or was) there a power wash of the lined containment area (to be) performed	Yes
OTHER (Non-listed remedial process)	Yes
Other Non-listed Remedial Process. Please specify	No remediation needed after liner inspection.
<i>Per Subsection B of 19.15.29.11 NMAC unless the site characterization report includes completed efforts at remediation, the report must include a proposed remediation plan in accordance with 19.15.29.12 NMAC, which includes the anticipated timelines for beginning and completing the remediation.</i>	
I hereby certify that the information given above is true and complete to the best of my knowledge and understand that pursuant to OCD rules and regulations all operators are required to report and/or file certain release notifications and perform corrective actions for releases which may endanger public health or the environment. The acceptance of a C-141 report by the OCD does not relieve the operator of liability should their operations have failed to adequately investigate and remediate contamination that pose a threat to groundwater, surface water, human health or the environment. In addition, OCD acceptance of a C-141 report does not relieve the operator of responsibility for compliance with any other federal, state, or local laws and/or regulations.	
I hereby agree and sign off to the above statement	Name: Justin Carter Title: Landman Email: jcarter@novooog.com Date: 05/21/2025
<i>The OCD recognizes that proposed remediation measures may have to be minimally adjusted in accordance with the physical realities encountered during remediation. If the responsible party has any need to significantly deviate from the remediation plan proposed, then it should consult with the division to determine if another remediation plan submission is required.</i>	

Sante Fe Main Office
Phone: (505) 476-3441

General Information
Phone: (505) 629-6116

Online Phone Directory
<https://www.emnrd.nm.gov/ocd/contact-us>

State of New Mexico
Energy, Minerals and Natural Resources
Oil Conservation Division
1220 S. St Francis Dr.
Santa Fe, NM 87505

QUESTIONS, Page 6

Action 465761

QUESTIONS (continued)

Operator: Silverback Operating II, LLC 1001 W. Wilshire Blvd Oklahoma City, OK 73112	OGRID: 330968
	Action Number: 465761
	Action Type: [C-141] Remediation Closure Request C-141 (C-141-v-Closure)

QUESTIONS

Liner Inspection Information	
Last liner inspection notification (C-141L) recorded	462320
Liner inspection date pursuant to Subparagraph (a) of Paragraph (5) of Subsection A of 19.15.29.11 NMAC	05/16/2025
Was all the impacted materials removed from the liner	Yes
What was the liner inspection surface area in square feet	11230

Remediation Closure Request

Only answer the questions in this group if seeking remediation closure for this release because all remediation steps have been completed.

Requesting a remediation closure approval with this submission	Yes
Have the lateral and vertical extents of contamination been fully delineated	Yes
Was this release entirely contained within a lined containment area	Yes
What was the total surface area (in square feet) remediated	0
What was the total volume (cubic yards) remediated	0
Summarize any additional remediation activities not included by answers (above)	No remediation was needed. Only a liner inspection was done.

The responsible party must attach information demonstrating they have complied with all applicable closure requirements and any conditions or directives of the OCD. This demonstration should be in the form of a comprehensive report (in .pdf format) including a scaled site map, sampling diagrams, relevant field notes, photographs of any excavation prior to backfilling, laboratory data including chain of custody documents of final sampling, and a narrative of the remedial activities. Refer to 19.15.29.12 NMAC.

I hereby certify that the information given above is true and complete to the best of my knowledge and understand that pursuant to OCD rules and regulations all operators are required to report and/or file certain release notifications and perform corrective actions for releases which may endanger public health or the environment. The acceptance of a C-141 report by the OCD does not relieve the operator of liability should their operations have failed to adequately investigate and remediate contamination that pose a threat to groundwater, surface water, human health or the environment. In addition, OCD acceptance of a C-141 report does not relieve the operator of responsibility for compliance with any other federal, state, or local laws and/or regulations. The responsible party acknowledges they must substantially restore, reclaim, and re-vegetate the impacted surface area to the conditions that existed prior to the release or their final land use in accordance with 19.15.29.13 NMAC including notification to the OCD when reclamation and re-vegetation are complete.

I hereby agree and sign off to the above statement	Name: Justin Carter Title: Landman Email: jcarter@novooog.com Date: 05/21/2025
--	--

Sante Fe Main Office
Phone: (505) 476-3441

General Information
Phone: (505) 629-6116

Online Phone Directory
<https://www.emnrd.nm.gov/ocd/contact-us>

State of New Mexico
Energy, Minerals and Natural Resources
Oil Conservation Division
1220 S. St Francis Dr.
Santa Fe, NM 87505

CONDITIONS

Action 465761

CONDITIONS

Operator: Silverback Operating II, LLC 1001 W. Wilshire Blvd Oklahoma City, OK 73112	OGRID: 330968
	Action Number: 465761
	Action Type: [C-141] Remediation Closure Request C-141 (C-141-v-Closure)

CONDITIONS

Created By	Condition	Condition Date
rhamlet	We have received your Remediation Closure Report for Incident #NAPP2325637510 ANN SWD #1, thank you. This Remediation Closure Report is approved.	7/8/2025