

Kyle Norman

From: Smalts, Raymond A <Raymond.A.Smalts@p66.com>
Sent: Saturday, August 2, 2025 10:53 PM
To: Mike.Bratcher@state.nm.us; Michael Bratcher
Cc: Millican, Scot A; Green, Mitchell A; Rivas, Gabriel; Riche, Austen T; Cook, John W; Khelurkar, Nikunj; Case, Nicholas L; Daly, Stacey; Kyle Norman; Brett Dennis
Subject: Notice of Fire/Release: Artesia Natural Gas Plant

Follow Up Flag: Follow up
Flag Status: Flagged

Mr. Bratcher,

This evening at ~22:29, I was notified of a fire that occurred at **32.7564, -104.2111** in Eddy County at the Artesia Natural Gas Plant. The cause of the fire is still under investigation. The fire started at ~21:50 and was put out by local fire department at ~22:25. Emergency services were onsite, but no injuries occurred. The volume released, if any, is unknown and currently under investigation. I called and left you a voicemail at 22:48. Additional details will be provided with the C-141 submittal. The discovery date and time for this event is 08/02/2025 at ~21:50.

Therefore:

In an abundance of caution and to meet potentially applicable reporting deadlines, DCP is submitting this initial report based on the information currently available and DCP's understanding of the facts at this time; however, DCP's investigation and assessment is ongoing. DCP therefore reserves the right to supplement and revise the information in this initial report if and as new information becomes available. DCP also reserves the right to raise any arguments, facts, or defenses regarding this incident, including that this incident is not a "major release" as defined by 19.15.29.7(A) NMAC.

Thanks...


Ray Smalts
Sr. Environmental Engineer
Permian, SENM Asset

O: (575) 234-6405 | M: (575) 231-2611
Artesia Natural Gas Plant | 1925 Illinois Camp Rd | Artesia, NM 88210
Email: Raymond.A.Smalts@p66.com
Website: www.phillips66.com





FAX To: Regional Environmental Department 111-111-1111

SERC/LEPC Notification Form

Facility Name:	Artesia Plant	Date:	8/4/2025 6:32 AM	County:	EDDY
Location:	Event GPS Coordinates: 32.7564, -104.2111 Driving Directions: (Lat: 32.7564, Long: -104.2111); From US-82 (Main St) & US-285 (1st St) located on the east side of Artesia NM, drive 12.2 miles E on US-82, turn S and drive 2.9 miles on Illinois Camp Rd (CR-206) to the Gas Plant on the right.				<input checked="checked" type="checkbox"/> Initial Report <input type="checkbox"/> Updated Report <input type="checkbox"/> Final Report
Type of Incident:	Shutdown	Release Occurred To:	Air	Release Type:	Flared
Started On:	8/2/2025 9:30 PM	Ended On:	8/2/2025 10:22 PM	Discovered On:	8/2/2025 9:30 PM

Event Duration:

52 Minutes

Material Released:

Sulfur Dioxide: 2341.26 lbs

Material Composition:

Carbon Dioxide 1.197%, Methane 74.969%, Hydrogen Sulfide 0.611%, Hexane 0.191%, Butane 1.561%, Pentane 0.334%, Heptane 0.133%, n-Nonane 0.0049%, n-Octane 0.0399%, Nitrogen 1.495%, Propane 5.746%, Ethane 12.681%, Isobutane 0.693%, Isopentane 0.347%, Hydrogen Sulfide 0.611%,

Calculations:

Compound Calculation Used to Obtain Released Amount (Id: 131383)

Nitrogen Dioxide: 2315000 {scf/event} * 1253.56419720417 {MMbtu/scf} * 0.138 {lb/MMbtu} * 0.05

Nitrogen Dioxide: 2315000 {scf/event} * 1253.56419720417 {MMbtu/scf} * 0.138 {lb/MMbtu} * 0.05

Hexane: 2315000 {scf/event} * 0.00190999999642372 {mole fraction} * 86.1754 {lb/lb-mole} * {1 - 98} / 379.3 {scf/lb-mole}

Butane: 2315000 {scf/event} * 0.0156099998950958 {mole fraction} * 58.1222 {lb/lb-mole} * {1 - 98} / 379.3 {scf/lb-mole}

Pentane: 2315000 {scf/event} * 0.00333999991416931 {mole fraction} * 72.1488 {lb/lb-mole} * {1 - 98} / 379.3 {scf/lb-mole}

Heptane: 2315000 {scf/event} * 0.00133000001311302 {mole fraction} * 100.2019 {lb/lb-mole} * {1 - 98} / 379.3 {scf/lb-mole}

n-Nonane: 2315000 {scf/event} * 0.0000490000005811453 {mole fraction} * 128.2551 {lb/lb-mole} * {1 - 98} / 379.3 {scf/lb-mole}

n-Octane: 2315000 {scf/event} * 0.000399000011384487 {mole fraction} * 114.2285 {lb/lb-mole} * {1 - 98} / 379.3 {scf/lb-mole}

Propane: 2315000 {scf/event} * 0.0574599981307983 {mole fraction} * 44.0956 {lb/lb-mole} * {1 - 98} / 379.3 {scf/lb-mole}

Isobutane: 2315000 {scf/event} * 0.00693000018596649 {mole fraction} * 58.1222 {lb/lb-mole} * {1 - 98} / 379.3 {scf/lb-mole}

Isopentane: 2315000 {scf/event} * 0.00347000002861023 {mole fraction} * 72.1488 {lb/lb-mole} * {1 - 98} / 379.3 {scf/lb-mole}

Carbon Monoxide: 2315000 {scf/event} * 1253.56419720417 {MMbtu/scf} * 0.2755 {lb/MMbtu}

Sulfur Dioxide: 2315000 {scf/event} * 0.00611000001430511 {mole fraction} * 34.08088 {lb/lb-mol} / 379.3 {scf/lb-mol} * 64.064 {lb/lb-mole} / 34.08088 {lb/lb-mol} * 98

Nitrogen Oxides: 2315000 {scf/event} * 1253.56419720417 {MMbtu/scf} * 0.138 {lb/MMbtu}

Hydrogen Sulfide: 2315000 {scf/event} * 0.00611000001430511 {mole fraction} * 34.08088 {lb/lb-mole} * {1 - 98} / 379.3 {scf/lb-mole}

Nitrogen: 2315000 {scf/event} * 0.0149500000476837 {mole fraction} * 28.0134 {lb/lb-mole} * {1 - 98} / 379.3 {scf/lb-mole}

Ethane: 2315000 {scf/event} * 0.126809997558594 {mole fraction} * 30.069 {lb/lb-mole} * {1 - 98} / 379.3 {scf/lb-mole}

Violations:

Emission Value Maximum for Sulfur Dioxide (500 lb/event) - EPCRA/SARA 304

Emission Value Maximum for Sulfur Dioxide (500 lb/event) - EPCRA/SARA 304

Known or anticipated acute or chronic health risks associated with the emergency:**Sulfur Dioxide:** Eye contact: Causes eye irritation.

Inhalation: Toxic if inhaled.

Skin contact: Causes severe burns.

Ingestion: As this product is a gas, refer to the inhalation section.

Medical attention advised for exposed individuals:

Sulfur Dioxide: Eye contact: Get medical attention immediately. Call a poison center or physician. Immediately flush eyes with plenty of water, occasionally lifting the upper and lower eyelids. Check for and remove any contact lenses. Continue to rinse for at least 10 minutes. Chemical burns must be treated promptly by a physician.

Inhalation: Get medical attention immediately. Call a poison center or physician. Remove victim to fresh air and keep at rest in a position comfortable for breathing. If it is suspected that fumes are still present, the rescuer should wear an appropriate mask or self-contained breathing apparatus. If not breathing, if breathing is irregular or if respiratory

artificial respiration or oxygen by trained personnel. It may be dangerous to the person providing aid to give mouth-to-mouth resuscitation. If unconscious, place in recovery position and get medical attention immediately. Maintain an open airway. Loosen tight clothing such as a collar, tie, belt or waistband.

Skin contact: Get medical attention immediately. Call a poison center or physician. Flush contaminated skin with plenty of water. Remove contaminated clothing and shoes. Wash contaminated clothing thoroughly with water before removing it, or wear gloves. Continue to rinse for at least 10 minutes. Chemical burns must be treated promptly by a physician. Wash clothing before reuse. Clean shoes thoroughly before reuse.

Ingestion: As this product is a gas, refer to the inhalation section.

Cause of the upset:

Plant ESD was activated due to a compressor fire.

Actions taken to correct the upset and minimize emissions:

Gas was shifted around Artesia.

Precautions taken as a result of the release:

A. AI Number 199		N. Failure Pt No: O. Failure Pt. Description: Flare (Unit 22 USE THIS FOR FLARE REPORTS)			
A. NOx: 400.48 lb	B. SO2: 2341.26 lb	C. CO: 799.5 lb	D. PM:	E. VOC: 571.87 lb	F. H2S: 25.42 lb
Vol=2315 mscf/event					
SERC Email Notification:		henry.jolly@state.nm.us		LEPC Email Notification:	jarmendariz@eddyoem.com



FAX To: Regional Environmental Department 111-111-1111

SERC/LEPC Notification Form

Facility Name:	Artesia Plant	Date:	8/4/2025 6:44 AM	County:	EDDY
Location:	Event GPS Coordinates: 32.7564, -104.2111 Driving Directions: (Lat: 32.7564, Long: -104.2111); From US-82 (Main St) & US-285 (1st St) located on the east side of Artesia NM, drive 12.2 miles E on US-82, turn S and drive 2.9 miles on Illinois Camp Rd (CR-206) to the Gas Plant on the right.				<input checked="checked" type="checkbox"/> Initial Report <input type="checkbox"/> Updated Report <input type="checkbox"/> Final Report
Type of Incident:	Shutdown	Release Occurred To:	Air	Release Type:	Flared
Started On:	8/2/2025 9:28 AM	Ended On:	8/3/2025 2:42 AM	Discovered On:	8/2/2025 9:28 AM

Event Duration:

1034 Minutes

Material Released:

Sulfur Dioxide: 1617.74 lbs

Material Composition:

Carbon Dioxide 0.851%, Methane 79.995%, Hydrogen Sulfide 0.422%, Hexane 0.29%, Butane 1.511%, Pentane 0.427%, Heptane 0.272%, n-Nonane 0.0329%, n-Octane 0.1209%, Nitrogen 1.782%, Propane 4.084%, Ethane 9.187%, Isobutane 0.557%, Isopentane 0.47%, Hydrogen Sulfide 0.422%,

Calculations:

Compound Calculation Used to Obtain Released Amount (Id: 131384)

Nitrogen Dioxide: $2316000 \text{ {scf/event}} * 1222.08913002081 \text{ {MMbtu/scf}} * 0.138 \text{ {lb/MMbtu}} * 0.05$ Nitrogen Dioxide: $2316000 \text{ {scf/event}} * 1222.08913002081 \text{ {MMbtu/scf}} * 0.138 \text{ {lb/MMbtu}} * 0.05$ Hexane: $2316000 \text{ {scf/event}} * 0.0028999999165535 \text{ {mole fraction}} * 86.1754 \text{ {lb/lb-mole}} * \{1 - 98\} / 379.3 \text{ {scf/lb-mole}}$ Butane: $2316000 \text{ {scf/event}} * 0.015110000371933 \text{ {mole fraction}} * 58.1222 \text{ {lb/lb-mole}} * \{1 - 98\} / 379.3 \text{ {scf/lb-mole}}$ Pentane: $2316000 \text{ {scf/event}} * 0.00426999986171722 \text{ {mole fraction}} * 72.1488 \text{ {lb/lb-mole}} * \{1 - 98\} / 379.3 \text{ {scf/lb-mole}}$ Heptane: $2316000 \text{ {scf/event}} * 0.00272000014781952 \text{ {mole fraction}} * 100.2019 \text{ {lb/lb-mole}} * \{1 - 98\} / 379.3 \text{ {scf/lb-mole}}$ n-Nonane: $2316000 \text{ {scf/event}} * 0.000329000018537045 \text{ {mole fraction}} * 128.2551 \text{ {lb/lb-mole}} * \{1 - 98\} / 379.3 \text{ {scf/lb-mole}}$ n-Octane: $2316000 \text{ {scf/event}} * 0.00120899997651577 \text{ {mole fraction}} * 114.2285 \text{ {lb/lb-mole}} * \{1 - 98\} / 379.3 \text{ {scf/lb-mole}}$ Propane: $2316000 \text{ {scf/event}} * 0.0408400011062622 \text{ {mole fraction}} * 44.0956 \text{ {lb/lb-mole}} * \{1 - 98\} / 379.3 \text{ {scf/lb-mole}}$ Isobutane: $2316000 \text{ {scf/event}} * 0.00556999981403351 \text{ {mole fraction}} * 58.1222 \text{ {lb/lb-mole}} * \{1 - 98\} / 379.3 \text{ {scf/lb-mole}}$ Isopentane: $2316000 \text{ {scf/event}} * 0.00469999998807907 \text{ {mole fraction}} * 72.1488 \text{ {lb/lb-mole}} * \{1 - 98\} / 379.3 \text{ {scf/lb-mole}}$ Carbon Monoxide: $2316000 \text{ {scf/event}} * 1222.08913002081 \text{ {MMbtu/scf}} * 0.2755 \text{ {lb/MMbtu}}$ Sulfur Dioxide: $2316000 \text{ {scf/event}} * 0.00421999990940094 \text{ {mole fraction}} * 34.08088 \text{ {lb/lb-mol}} / 379.3 \text{ {scf/lb-mol}} * 64.064 \text{ {lb/lb-mole}} / 34.08088 \text{ {lb/lb-mol}} * 98$ Nitrogen Oxides: $2316000 \text{ {scf/event}} * 1222.08913002081 \text{ {MMbtu/scf}} * 0.138 \text{ {lb/MMbtu}}$ Hydrogen Sulfide: $2316000 \text{ {scf/event}} * 0.00421999990940094 \text{ {mole fraction}} * 34.08088 \text{ {lb/lb-mole}} * \{1 - 98\} / 379.3 \text{ {scf/lb-mole}}$ Nitrogen: $2316000 \text{ {scf/event}} * 0.0178199994564056 \text{ {mole fraction}} * 28.0134 \text{ {lb/lb-mole}} * \{1 - 98\} / 379.3 \text{ {scf/lb-mole}}$ Ethane: $2316000 \text{ {scf/event}} * 0.091870002746582 \text{ {mole fraction}} * 30.069 \text{ {lb/lb-mole}} * \{1 - 98\} / 379.3 \text{ {scf/lb-mole}}$ **Violations:**

Emission Value Maximum for Sulfur Dioxide (500 lb/event) - EPCRA/SARA 304

Emission Value Maximum for Sulfur Dioxide (500 lb/event) - EPCRA/SARA 304

Known or anticipated acute or chronic health risks associated with the emergency:**Sulfur Dioxide:** Eye contact: Causes eye irritation.

Inhalation: Toxic if inhaled.

Skin contact: Causes severe burns.

Ingestion: As this product is a gas, refer to the inhalation section.

Medical attention advised for exposed individuals:

Sulfur Dioxide: Eye contact: Get medical attention immediately. Call a poison center or physician. Immediately flush eyes with plenty of water, occasionally lifting the upper and lower eyelids. Check for and remove any contact lenses. Continue to rinse for at least 10 minutes. Chemical burns must be treated promptly by a physician.

Inhalation: Get medical attention immediately. Call a poison center or physician. Remove victim to fresh air and keep at rest in a position comfortable for breathing. If it is suspected that fumes are still present, the rescuer should wear an appropriate mask or self-contained breathing apparatus. If not breathing, if breathing is irregular or if respiratory

artificial respiration or oxygen by trained personnel. It may be dangerous to the person providing aid to give mouth-to-mouth resuscitation. If unconscious, place in recovery position and get medical attention immediately. Maintain an open airway. Loosen tight clothing such as a collar, tie, belt or waistband.

Skin contact: Get medical attention immediately. Call a poison center or physician. Flush contaminated skin with plenty of water. Remove contaminated clothing and shoes. Wash contaminated clothing thoroughly with water before removing it, or wear gloves. Continue to rinse for at least 10 minutes. Chemical burns must be treated promptly by a physician. Wash clothing before reuse. Clean shoes thoroughly before reuse.

Ingestion: As this product is a gas, refer to the inhalation section.

Cause of the upset:
Plant ESD was activated due to a compressor fire.

Actions taken to correct the upset and minimize emissions:
Gas was shifted away from Artesia.

Precautions taken as a result of the release:

A. AI Number 199		N. Failure Pt No: O. Failure Pt. Description: Flare (Unit 22 USE THIS FOR FLARE REPORTS)			
A. NOx: 390.59 lb	B. SO2: 1617.74 lb	C. CO: 779.76 lb	D. PM:	E. VOC: 531.56 lb	F. H2S: 17.56 lb
Vol=2316 mscf/event					
SERC Email Notification: henry.jolly@state.nm.us LEPC Email Notification: jarmendariz@eddyoem.com					



FAX To: Regional Environmental Department 111-111-1111

SERC/LEPC Notification Form

Facility Name:	Artesia Plant	Date:	8/4/2025 8:08 AM	County:	EDDY
Location:	Event GPS Coordinates: 32.7564, -104.2111 Driving Directions: (Lat: 32.7564, Long: -104.2111); From US-82 (Main St) & US-285 (1st St) located on the east side of Artesia NM, drive 12.2 miles E on US-82, turn S and drive 2.9 miles on Illinois Camp Rd (CR-206) to the Gas Plant on the right.				<input checked="checked" type="checkbox"/> Initial Report <input type="checkbox"/> Updated Report <input type="checkbox"/> Final Report
Type of Incident:	Shutdown	Release Occurred To:	Air	Release Type:	Flared
Started On:	8/2/2025 9:33 PM	Ended On:	8/2/2025 9:43 PM	Discovered On:	8/2/2025 9:33 PM

Event Duration:

10 Minutes

Material Released:**Material Composition:**

Carbon Dioxide 95.551%, Methane 1.014%, Hydrogen Sulfide 1%, Hexane 0.258%, Butane 0.062%, Pentane 0.023%, Nitrogen 1.669%, Propane 0.125%, Ethane 0.238%, Isobutane 0.043%, Isopentane 0.017%,

Calculations:

Compound Calculation Used to Obtain Released Amount (Id: 131388)

Hexane: $19000 \text{ {scf/event}} * 0.00257999986410141 \text{ {mole fraction}} * 86.1754 \text{ {lb/lb-mole}} * \{1 - 98\} / 379.3 \text{ {scf/lb-mole}}$
 Butane: $19000 \text{ {scf/event}} * 0.00061999998986721 \text{ {mole fraction}} * 58.1222 \text{ {lb/lb-mole}} * \{1 - 98\} / 379.3 \text{ {scf/lb-mole}}$
 Pentane: $19000 \text{ {scf/event}} * 0.000230000000447035 \text{ {mole fraction}} * 72.1488 \text{ {lb/lb-mole}} * \{1 - 98\} / 379.3 \text{ {scf/lb-mole}}$
 Propane: $19000 \text{ {scf/event}} * 0.00125 \text{ {mole fraction}} * 44.0956 \text{ {lb/lb-mole}} * \{1 - 98\} / 379.3 \text{ {scf/lb-mole}}$
 Isobutane: $19000 \text{ {scf/event}} * 0.000430000014603138 \text{ {mole fraction}} * 58.1222 \text{ {lb/lb-mole}} * \{1 - 98\} / 379.3 \text{ {scf/lb-mole}}$
 Isopentane: $19000 \text{ {scf/event}} * 0.00017000000923872 \text{ {mole fraction}} * 72.1488 \text{ {lb/lb-mole}} * \{1 - 98\} / 379.3 \text{ {scf/lb-mole}}$

Violations:**Known or anticipated acute or chronic health risks associated with the emergency:****Medical attention advised for exposed individuals:****Cause of the upset:**

Plant ESD caused flare valve to open.

Actions taken to correct the upset and minimize emissions:

Gas was shifted around Artesia, flare valve closed.

Precautions taken as a result of the release:

A. AI Number	N. Failure Pt No: O. Failure Pt. Description:				
199	Flare (Unit 22 USE THIS FOR FLARE REPORTS)				
A. NOx:	B. SO2:	C. CO:	D. PM:	E. VOC:	F. H2S:
0 lb	0 lb	0 lb		0.37 lb	0 lb

Vol=19 mscf/event

SERC Email Notification:

henry.jolly@state.nm.us

LEPC Email Notification:

jarmendariz@eddyoem.com



FAX To: Regional Environmental Department 111-111-1111

SERC/LEPC Notification Form

Facility Name:	Artesia Plant	Date:	8/4/2025 8:20 AM	County:	EDDY
Location:	Event GPS Coordinates: 32.7564, -104.2111 Driving Directions: (Lat: 32.7564, Long: -104.2111); From US-82 (Main St) & US-285 (1st St) located on the east side of Artesia NM, drive 12.2 miles E on US-82, turn S and drive 2.9 miles on Illinois Camp Rd (CR-206) to the Gas Plant on the right.				<input checked="checked" type="checkbox"/> Initial Report <input type="checkbox"/> Updated Report <input type="checkbox"/> Final Report
Type of Incident:	Shutdown	Release Occurred To:	Air	Release Type:	Flared
Started On:	8/2/2025 9:36 PM	Ended On:	8/2/2025 9:55 PM	Discovered On:	8/2/2025 9:36 PM

Event Duration:

19 Minutes

Material Released:**Material Composition:**

Methane 94.4088%, Butane 0.0007%, Nitrogen 1.9446%, Propane 0.0788%, Ethane 3.5661%, Isobutane 0.001%,

Calculations:

Compound Calculation Used to Obtain Released Amount (Id: 131389)

Nitrogen Dioxide: $4000 \text{ {scf/event}} * 1023.17018210409 \text{ {MMbtu/scf}} * 0.138 \text{ {lb/MMbtu}} * 0.05$ Nitrogen Dioxide: $4000 \text{ {scf/event}} * 1023.17018210409 \text{ {MMbtu/scf}} * 0.138 \text{ {lb/MMbtu}} * 0.05$ Butane: $4000 \text{ {scf/event}} * 0.00000740666666666667 \text{ {mole fraction}} * 58.1222 \text{ {lb/lb-mole}} * \{1 - 98\} / 379.3 \text{ {scf/lb-mole}}$ Propane: $4000 \text{ {scf/event}} * 0.0007878116666666667 \text{ {mole fraction}} * 44.0956 \text{ {lb/lb-mole}} * \{1 - 98\} / 379.3 \text{ {scf/lb-mole}}$ Isobutane: $4000 \text{ {scf/event}} * 0.00001 \text{ {mole fraction}} * 58.1222 \text{ {lb/lb-mole}} * \{1 - 98\} / 379.3 \text{ {scf/lb-mole}}$ Carbon Monoxide: $4000 \text{ {scf/event}} * 1023.17018210409 \text{ {MMbtu/scf}} * 0.2755 \text{ {lb/MMbtu}}$ Nitrogen Oxides: $4000 \text{ {scf/event}} * 1023.17018210409 \text{ {MMbtu/scf}} * 0.138 \text{ {lb/MMbtu}}$ Nitrogen: $4000 \text{ {scf/event}} * 0.0194458270833333 \text{ {mole fraction}} * 28.0134 \text{ {lb/lb-mole}} * \{1 - 98\} / 379.3 \text{ {scf/lb-mole}}$ Ethane: $4000 \text{ {scf/event}} * 0.0356608716666667 \text{ {mole fraction}} * 30.069 \text{ {lb/lb-mole}} * \{1 - 98\} / 379.3 \text{ {scf/lb-mole}}$ **Violations:****Known or anticipated acute or chronic health risks associated with the emergency:****Medical attention advised for exposed individuals:****Cause of the upset:**

Plant ESD caused high pressure and flare valve to open.

Actions taken to correct the upset and minimize emissions:

Gas was shifted off of Artesia. Flare valve closed.

Precautions taken as a result of the release:

A. AI Number	N. Failure Pt No: O. Failure Pt. Description:				
199	Flare (Unit 22 USE THIS FOR FLARE REPORTS)				
A. NOx:	B. SO2:	C. CO:	D. PM:	E. VOC:	F. H2S:
0.56 lb	0 lb	1.13 lb		0.01 lb	0 lb

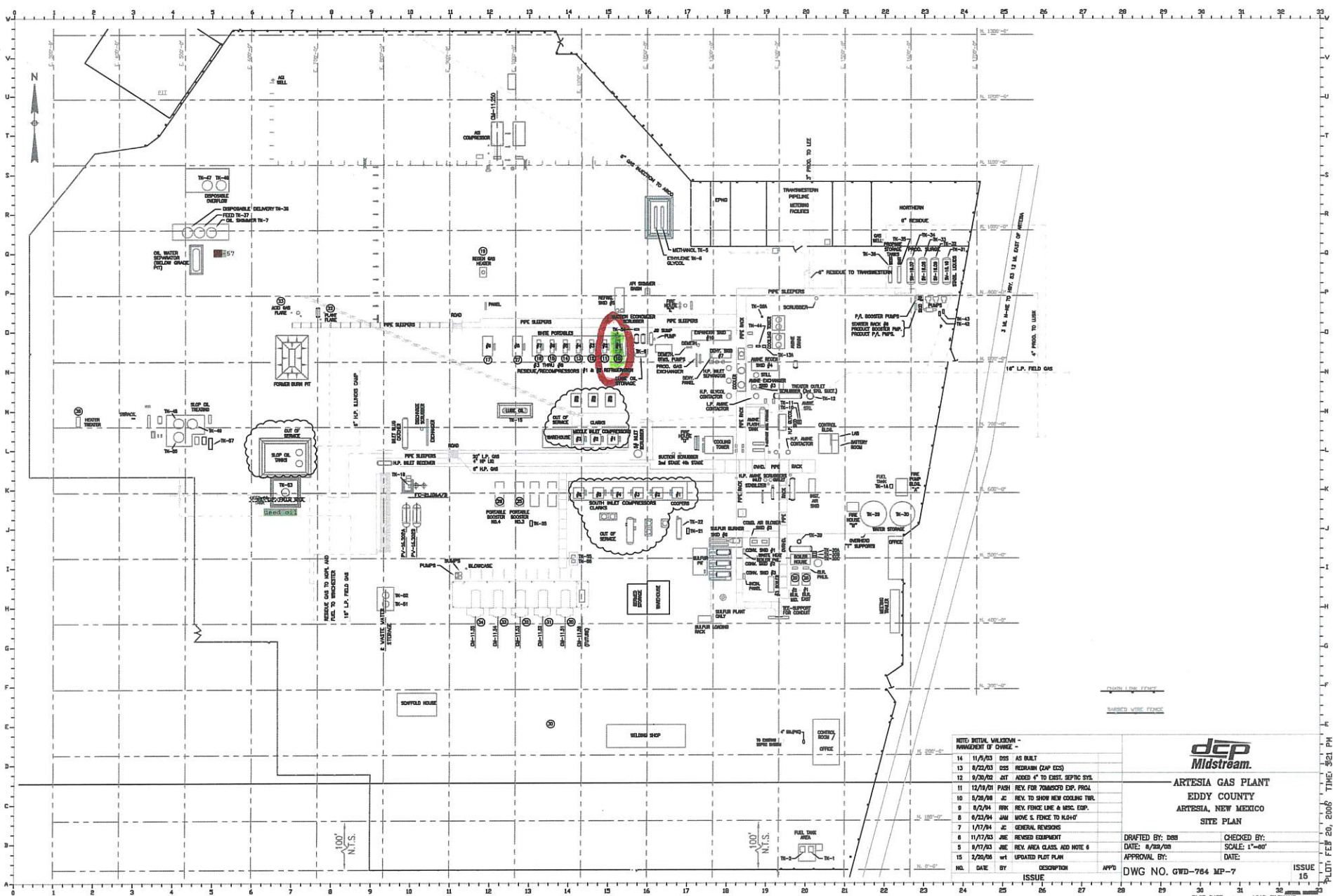
Vol=4 mscf/event

SERC Email Notification:

henry.jolly@state.nm.us

LEPC Email Notification:

jarmendariz@eddyoem.com



Artesia Propane 1 Fire



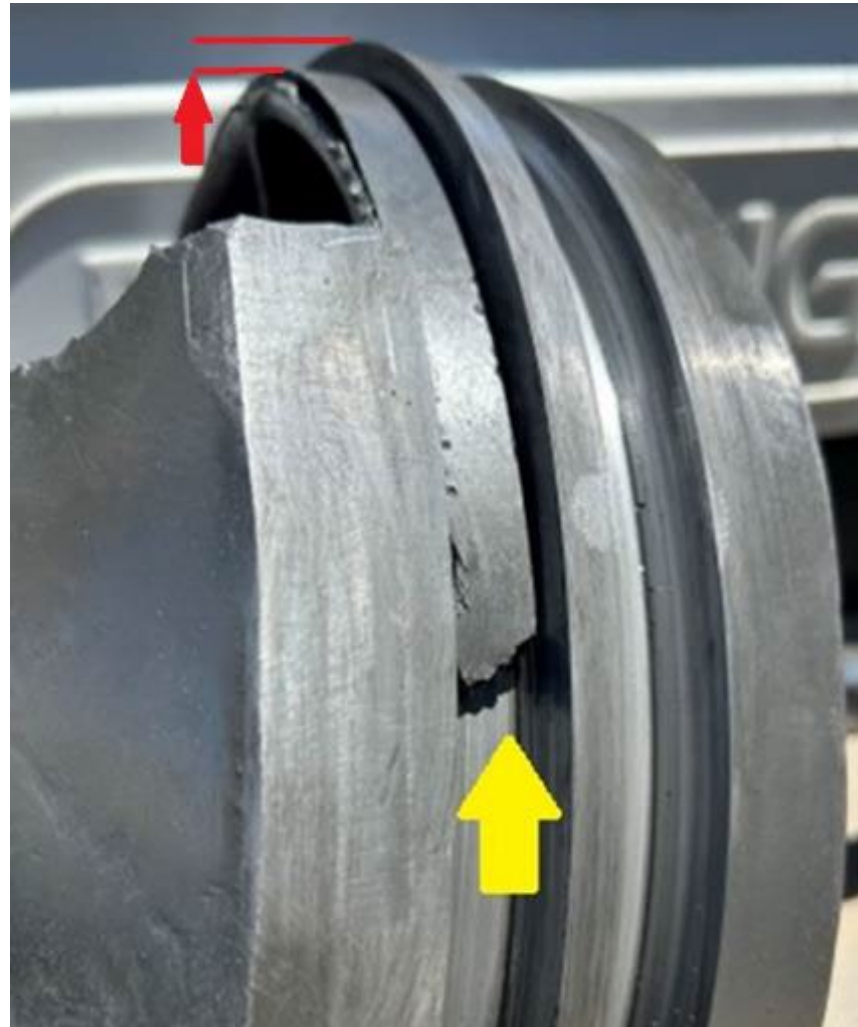
The Control Room surveillance camera captured the resulting fire

Artesia Propane 1 Fire



The center of the #2-cylinder head was blown out beyond the edge of the unit skid. A notch in the side of the center bore was due to contact with the piston retaining nut

Artesia Propane 1 Fire



The failed #2 piston with ring segment installed illustrates the extent of ring wear

Sante Fe Main Office
Phone: (505) 476-3441

General Information
Phone: (505) 629-6116

Online Phone Directory
<https://www.emnrd.nm.gov/ocd/contact-us>

State of New Mexico
Energy, Minerals and Natural Resources
Oil Conservation Division
1220 S. St Francis Dr.
Santa Fe, NM 87505

QUESTIONS

Action 495899

QUESTIONS

Operator: DCP OPERATING COMPANY, LP 2331 Citywest Blvd Houston, TX 77042	OGRID: 36785
	Action Number: 495899
	Action Type: [C-141] Initial C-141 (C-141-v-Initial)

QUESTIONS

Prerequisites	
Incident ID (n#)	nAPP2522330950
Incident Name	NAPP2522330950 ARTESIA GAS PLANT @ 0
Incident Type	Fire
Incident Status	Initial C-141 Received
Incident Facility	[fAB1815849907] ARTESIA GAS PLANT

Location of Release Source*Please answer all the questions in this group.*

Site Name	ARTESIA GAS PLANT
Date Release Discovered	08/02/2025
Surface Owner	Private

Incident Details*Please answer all the questions in this group.*

Incident Type	Fire
Did this release result in a fire or is the result of a fire	Yes
Did this release result in any injuries	No
Has this release reached or does it have a reasonable probability of reaching a watercourse	No
Has this release endangered or does it have a reasonable probability of endangering public health	No
Has this release substantially damaged or will it substantially damage property or the environment	Yes
Is this release of a volume that is or may with reasonable probability be detrimental to fresh water	No

Nature and Volume of Release*Material(s) released, please answer all that apply below. Any calculations or specific justifications for the volumes provided should be attached to the follow-up C-141 submission.*

Crude Oil Released (bbls) Details	Not answered.
Produced Water Released (bbls) Details	Not answered.
Is the concentration of chloride in the produced water >10,000 mg/l	No
Condensate Released (bbls) Details	Not answered.
Natural Gas Vented (Mcf) Details	Cause: Fire Gas Plant Natural Gas Vented Released: 4,654 MCF Recovered: 0 MCF Lost: 4,654 MCF.
Natural Gas Flared (Mcf) Details	Not answered.
Other Released Details	Not answered.
Are there additional details for the questions above (i.e. any answer containing Other, Specify, Unknown, and/or Fire, or any negative lost amounts)	Email notification of release was sent 08/02/2025 to Mike Bratcher at 10:53PM. Propane #1 is one of two Joy WB14 compressors used for refrigeration. While online, the head of the #2, 1st stage cylinder failed, blowing off and releasing a propane cloud that ignited—damaging control panels and the building. Impact marks on the cylinder head indicate contact with the piston rod retaining nut, likely caused by a broken piston ring segment wedging between the piston and cylinder.

Sante Fe Main Office
Phone: (505) 476-3441

General Information
Phone: (505) 629-6116

Online Phone Directory
<https://www.emnrd.nm.gov/ocd/contact-us>

State of New Mexico
Energy, Minerals and Natural Resources
Oil Conservation Division
1220 S. St Francis Dr.
Santa Fe, NM 87505

QUESTIONS, Page 2

Action 495899

QUESTIONS (continued)

Operator: DCP OPERATING COMPANY, LP 2331 Citywest Blvd Houston, TX 77042	OGRID: 36785
	Action Number: 495899
	Action Type: [C-141] Initial C-141 (C-141-v-Initial)

QUESTIONS

Nature and Volume of Release (continued)	
Is this a gas only submission (i.e. only significant Mcf values reported)	Yes, according to supplied volumes this appears to be a "gas only" report.
Was this a major release as defined by Subsection A of 19.15.29.7 NMAC	Yes
Reasons why this would be considered a submission for a notification of a major release	From paragraph A. "Major release" determine using: (2) an unauthorized release of a volume that: (a) results in a fire or is the result of a fire; (d) substantially damages property or the environment; (3) an unauthorized release of gases exceeding 500 MCF.
With the implementation of the 19.15.27 NMAC (05/25/2021), venting and/or flaring of natural gas (i.e. gas only) are to be submitted on the C-129 form.	

Initial Response

The responsible party must undertake the following actions immediately unless they could create a safety hazard that would result in injury.

The source of the release has been stopped	True
The impacted area has been secured to protect human health and the environment	True
Released materials have been contained via the use of berms or dikes, absorbent pads, or other containment devices	True
All free liquids and recoverable materials have been removed and managed appropriately	True
If all the actions described above have not been undertaken, explain why	Not answered.

Per Paragraph (4) of Subsection B of 19.15.29.8 NMAC the responsible party may commence remediation immediately after discovery of a release. If remediation has begun, please prepare and attach a narrative of actions to date in the follow-up C-141 submission. If remedial efforts have been successfully completed or if the release occurred within a lined containment area (see Subparagraph (a) of Paragraph (5) of Subsection A of 19.15.29.11 NMAC), please prepare and attach all information needed for closure evaluation in the follow-up C-141 submission.

I hereby certify that the information given above is true and complete to the best of my knowledge and understand that pursuant to OCD rules and regulations all operators are required to report and/or file certain release notifications and perform corrective actions for releases which may endanger public health or the environment. The acceptance of a C-141 report by the OCD does not relieve the operator of liability should their operations have failed to adequately investigate and remediate contamination that pose a threat to groundwater, surface water, human health or the environment. In addition, OCD acceptance of a C-141 report does not relieve the operator of responsibility for compliance with any other federal, state, or local laws and/or regulations.

I hereby agree and sign off to the above statement	Name: Ray Smalts Title: Sr Environmental Eng/Spec Email: raymond.a.smalts@p66.com Date: 08/14/2025
--	---

Sante Fe Main Office
Phone: (505) 476-3441

General Information
Phone: (505) 629-6116

Online Phone Directory
<https://www.emnrd.nm.gov/ocd/contact-us>

State of New Mexico
Energy, Minerals and Natural Resources
Oil Conservation Division
1220 S. St Francis Dr.
Santa Fe, NM 87505

QUESTIONS, Page 3

Action 495899

QUESTIONS (continued)

Operator: DCP OPERATING COMPANY, LP 2331 Citywest Blvd Houston, TX 77042	OGRID: 36785
	Action Number: 495899
	Action Type: [C-141] Initial C-141 (C-141-v-Initial)

QUESTIONS

Site Characterization	
<i>Please answer all the questions in this group (only required when seeking remediation plan approval and beyond). This information must be provided to the appropriate district office no later than 90 days after the release discovery date.</i>	
What is the shallowest depth to groundwater beneath the area affected by the release in feet below ground surface (ft bgs)	Not answered.
What method was used to determine the depth to ground water	Not answered.
Did this release impact groundwater or surface water	Not answered.
What is the minimum distance, between the closest lateral extents of the release and the following surface areas:	
A continuously flowing watercourse or any other significant watercourse	Not answered.
Any lakebed, sinkhole, or playa lake (measured from the ordinary high-water mark)	Not answered.
An occupied permanent residence, school, hospital, institution, or church	Not answered.
A spring or a private domestic fresh water well used by less than five households for domestic or stock watering purposes	Not answered.
Any other fresh water well or spring	Not answered.
Incorporated municipal boundaries or a defined municipal fresh water well field	Not answered.
A wetland	Not answered.
A subsurface mine	Not answered.
An (non-karst) unstable area	Not answered.
Categorize the risk of this well / site being in a karst geology	Not answered.
A 100-year floodplain	Not answered.
Did the release impact areas not on an exploration, development, production, or storage site	Not answered.

Remediation Plan	
<i>Please answer all the questions that apply or are indicated. This information must be provided to the appropriate district office no later than 90 days after the release discovery date.</i>	
Requesting a remediation plan approval with this submission	No
<i>The OCD recognizes that proposed remediation measures may have to be minimally adjusted in accordance with the physical realities encountered during remediation. If the responsible party has any need to significantly deviate from the remediation plan proposed, then it should consult with the division to determine if another remediation plan submission is required.</i>	

Sante Fe Main Office
Phone: (505) 476-3441

General Information
Phone: (505) 629-6116

Online Phone Directory
<https://www.emnrd.nm.gov/ocd/contact-us>

State of New Mexico
Energy, Minerals and Natural Resources
Oil Conservation Division
1220 S. St Francis Dr.
Santa Fe, NM 87505

CONDITIONS

Action 495899

CONDITIONS

Operator: DCP OPERATING COMPANY, LP 2331 Citywest Blvd Houston, TX 77042	OGRID: 36785
	Action Number: 495899
	Action Type: [C-141] Initial C-141 (C-141-v-Initial)

CONDITIONS

Created By	Condition	Condition Date
rhamlet	None	8/15/2025