



Remediation Report and Closure Request
Gobernador Compressor Station
Section: 31 Township: 30N Range: 7W
Lat: 36.774307 Long: -107.61773
Rio Arriba County, New Mexico

5/17/2025

Harvest mechanic was called out due to Gobernador Compressor station shutting down on Slot 1 fire eye detection. Upon inspection the mechanic found the prechamber fuel gas tubing supply line on the Slot 3 compressor had come loose releasing gas which ignited on the exhaust. A piece of conduit on the compressor had some charring but was the only damage from the fire due to the fire eye shutting down the station instantly and shutting all fuel supply off. The prechamber tubing was fixed and the station was put back online.

5/18/2025

A notification of release was submitted to the NMOCD online portal and assigned incident # nAPP2513829456.

5/19/2025

Gas loss was calculated to be 59.08 Mcf.

5/27/2025

An initial C-141 was submitted to the NMOCD.

7/15/2025

A liner inspection was completed on the concrete slab acting as a liner. Zero issues with the concrete slab were found.

This release that resulted in a fire had no environmental impact on the soil. Fire was contained inside of the building and was put out within a few seconds of occurring. Fire did not impact the integrity of the concrete liner as the fire never reached any part of the building. Repairs were made to prevent recurrence, and no other action is required at this time.



Photo Page
Gobernador Fire
Lat: 36.774307 Long: -107.61773





Photo Page
Gobernador Fire
Lat: 36.774307 Long: -107.61773





Photo Page
Gobernador Fire
Lat: 36.774307 Long: -107.61773

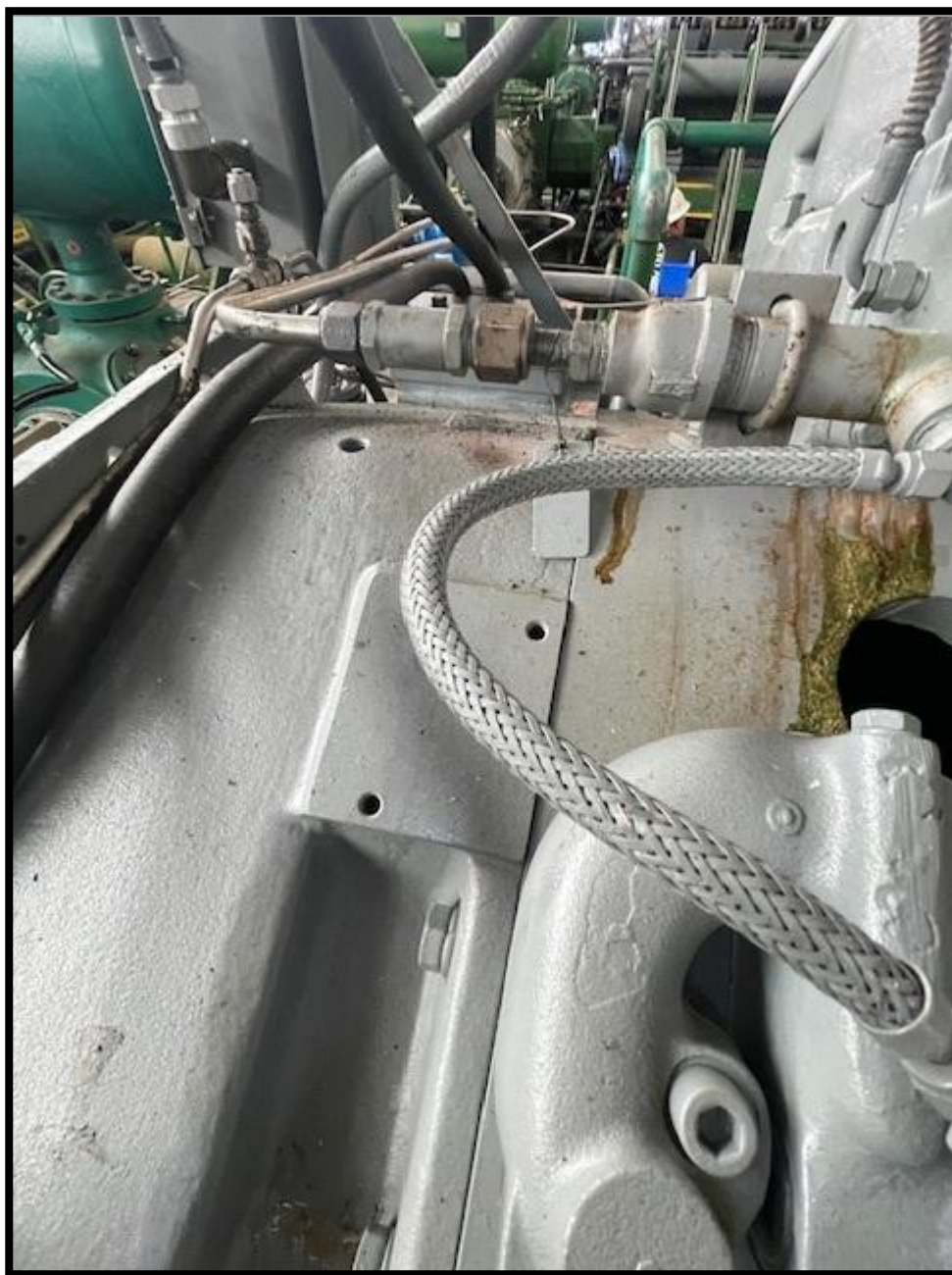




Photo Page
Gobernador Fire
Lat: 36.774307 Long: -107.61773

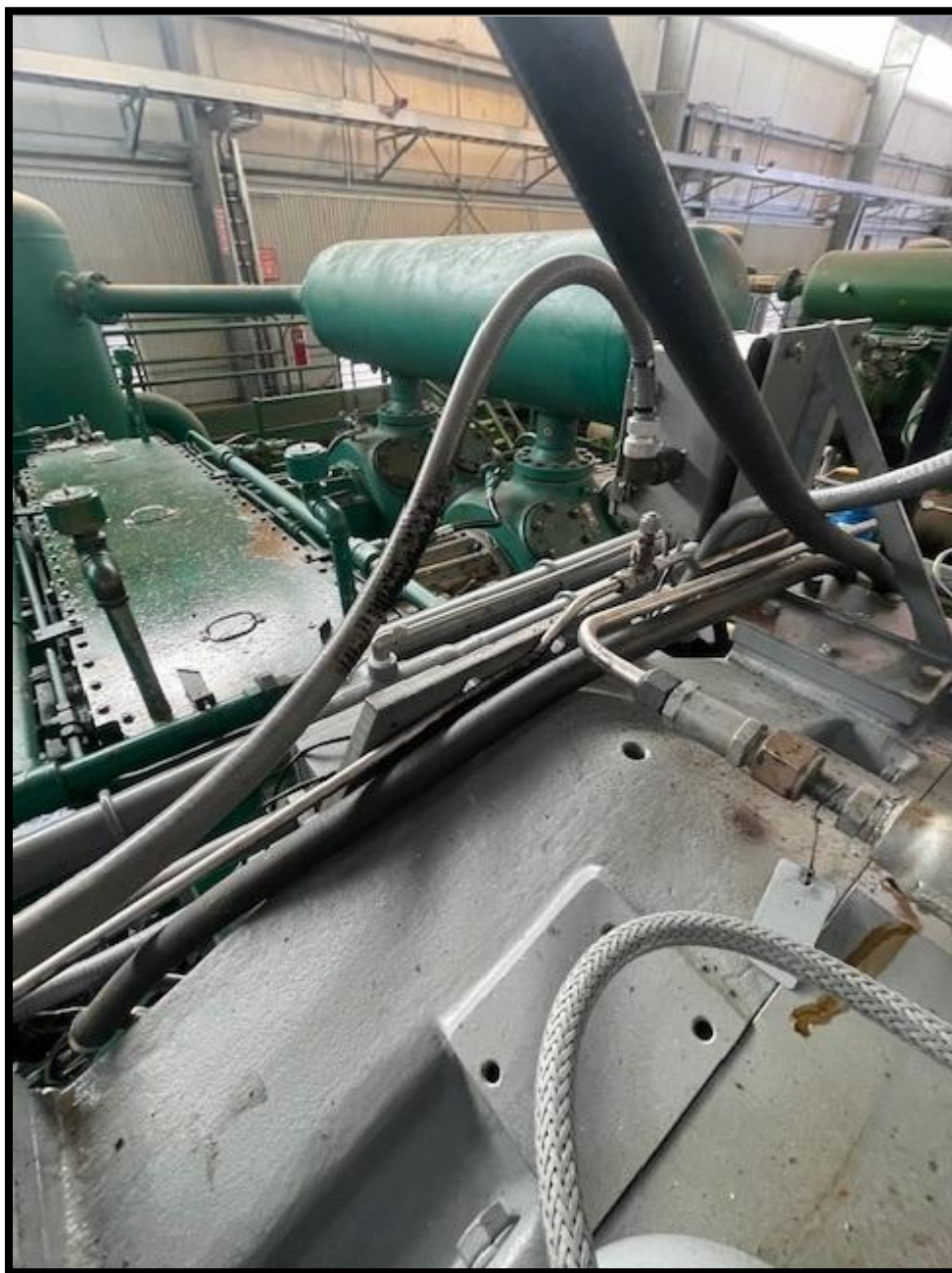




Photo Page
Gobernador Fire
Lat: 36.774307 Long: -107.61773





Photo Page
Gobernador Fire
Lat: 36.774307 Long: -107.61773





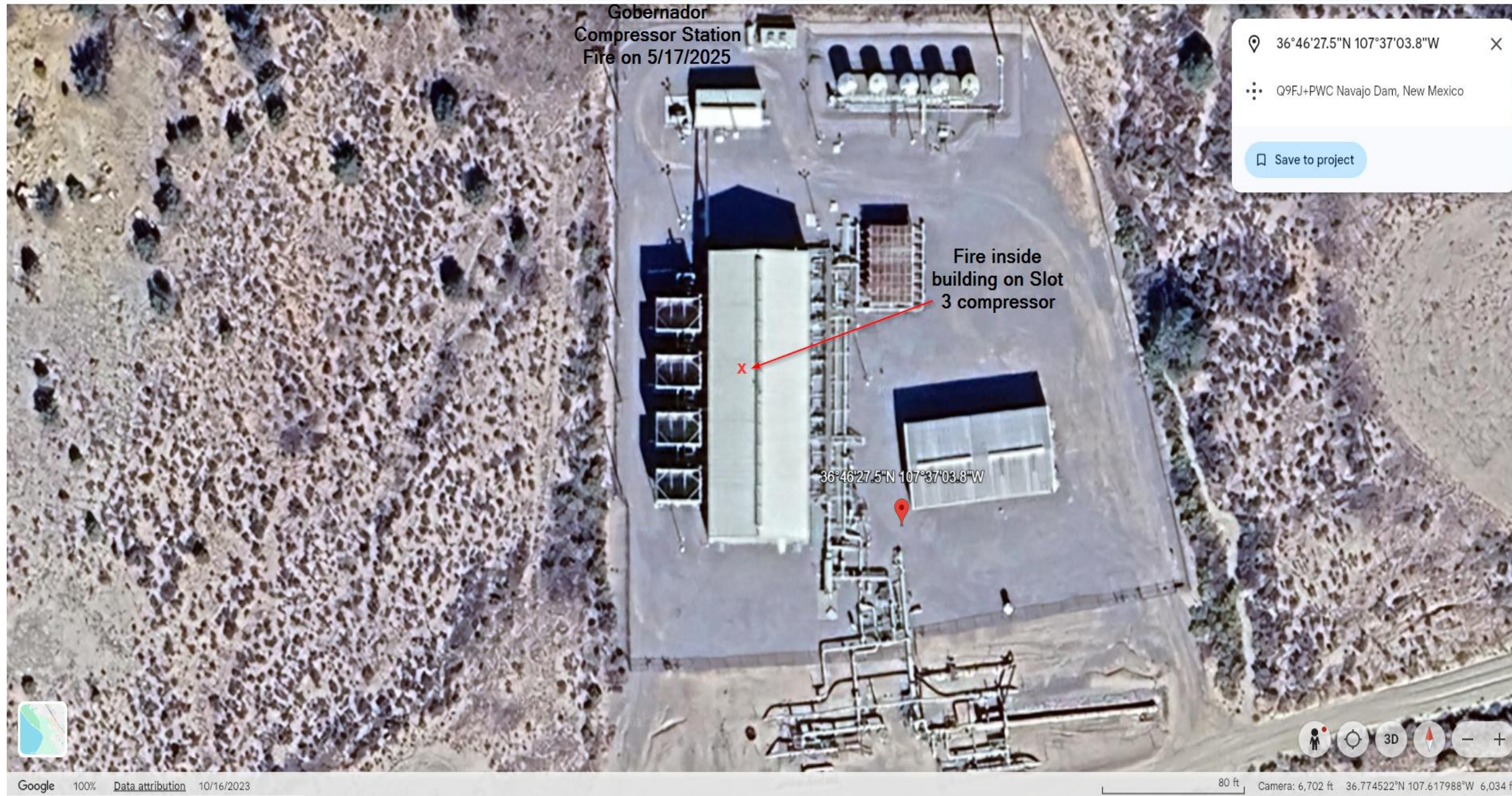
Photo Page
Gobernador Fire
Lat: 36.774307 Long: -107.61773





Photo Page
Gobernador Fire
Lat: 36.774307 Long: -107.61773





Gobernador
Compressor Station
Fire on 5/17/2025

36°46'27.5"N 107°37'03.8"W

Q9FJ+PWC Navajo Dam, New Mexico

Save to project

Fire inside
building on Slot
3 compressor

36°46'27.5"N 107°37'03.8"W



BASEMAPS >

STREETS

SATELLITE

HYBRID

TOPO

GRAY

OPEN STREET MAP

NAT'L MAP

MAP LAYERS >

☒ Wetlands

☒ Riparian

☐ Riparian Mapping Areas

☒ Data Source

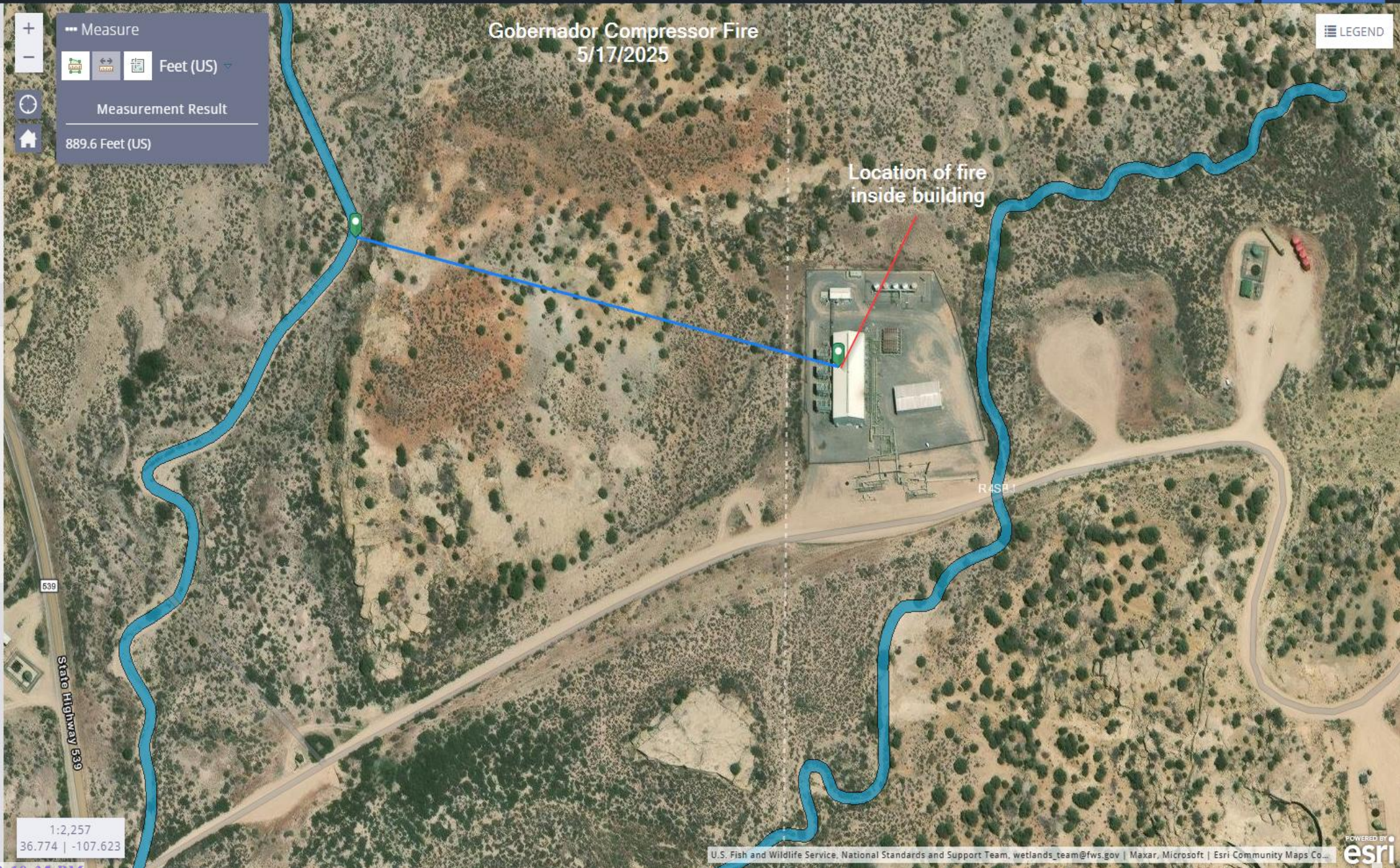
☐ Source Type

☐ Image Scale

☐ Image Year

☐ Areas of Interest

☐ FWS Managed Lands



The screenshot displays the Esri Field Maps application interface. The main map area shows an aerial view of a landscape with a blue line representing a wetland boundary. A measurement tool is active, showing a measurement of 243.9 Feet (US). A popup window displays the classification code R4SBj and its definition: System Riverine (R) : The Riverine System includes all wetlands and deepwater habitats contained within a channel, with two exceptions: (1) wetlands dominated by trees, shrubs, persistent emergents, emergent mosses, or lichens, and (2) habitats with water containing ocean-derived salts of 0.5 ppt or greater. A channel is an open conduit either naturally or artificially created which periodically or continuously contains moving water, or which forms a connecting link between two bodies of standing water. Subsystem Intermittent (4) : This Subsystem includes channels that contain flowing water only part of the year. When the water is not flowing, it may remain in isolated pools or surface water may be absent. Class Streambed (SB) : Includes all wetlands contained within the Intermittent Subsystem of the Riverine System and all channels of the Estuarine System or of the Tidal Subsystem of the Riverine System that are completely dewatered at low tide. The bottom of the screen shows the time 18:35 PM and the date 07.619.

Classification code: R4SBJ

System **Riverine (R)** : The Riverine System includes all wetlands and deepwater habitats contained within a channel, with two exceptions: (1) wetlands dominated by trees, shrubs, persistent emergents, emergent mosses, or lichens, and (2) habitats with water containing ocean-derived salts of 0.5 ppt or greater. A channel is an open conduit either naturally or artificially created which periodically or continuously contains moving water, or which forms a connecting link between two bodies of standing water.

Subsystem **Intermittent (4)** : This Subsystem includes channels that contain flowing water only part of the year. When the water is not flowing, it may remain in isolated pools or surface water may be absent.

Class **Streambed (SB)** : Includes all wetlands contained within the Intermittent Subsystem of the Riverine System and all channels of the Estuarine System or of the Tidal Subsystem of the Riverine System that are completely dewatered at low tide.

36.774307 -107.61773

Show search results for 36.774...

Layer List

Layers

OSE Water PODs

...

M2.5+ Earthquakes (USGS 30-day)

...

NM Oil and Gas Wells

...

Incidents (C-141)

...

Facilities

...

USGS Groundwater wells

...

Induced Seismicity Area

...

Permian Basin Karst Areas

...

BLM Oil Gas Leases Case Disp

...

BLM Oil Gas Leases Production Status

...

BLM Fluid Minerals Case

...

BLM FM Agreements Case Disp

...

BLM FM Agreements Production Status

...

BLM FM Participating Areas Case Disp

...

NM SLO Oil and Gas Leases

...

NM SLO Participating Area and Unit Agreement Boundaries

...

Political Boundaries and Transportation

...

Gobernador Station
Elevation= 6,029ft
Distance to Ground Water 19ft

SJ 04021 Water Well
Elevation= 6,123ft
Distance to Ground Water 75ft

Measurement

Miles

Measurement Result

2.97 Miles

Clear

Press CTRL to enable snapping

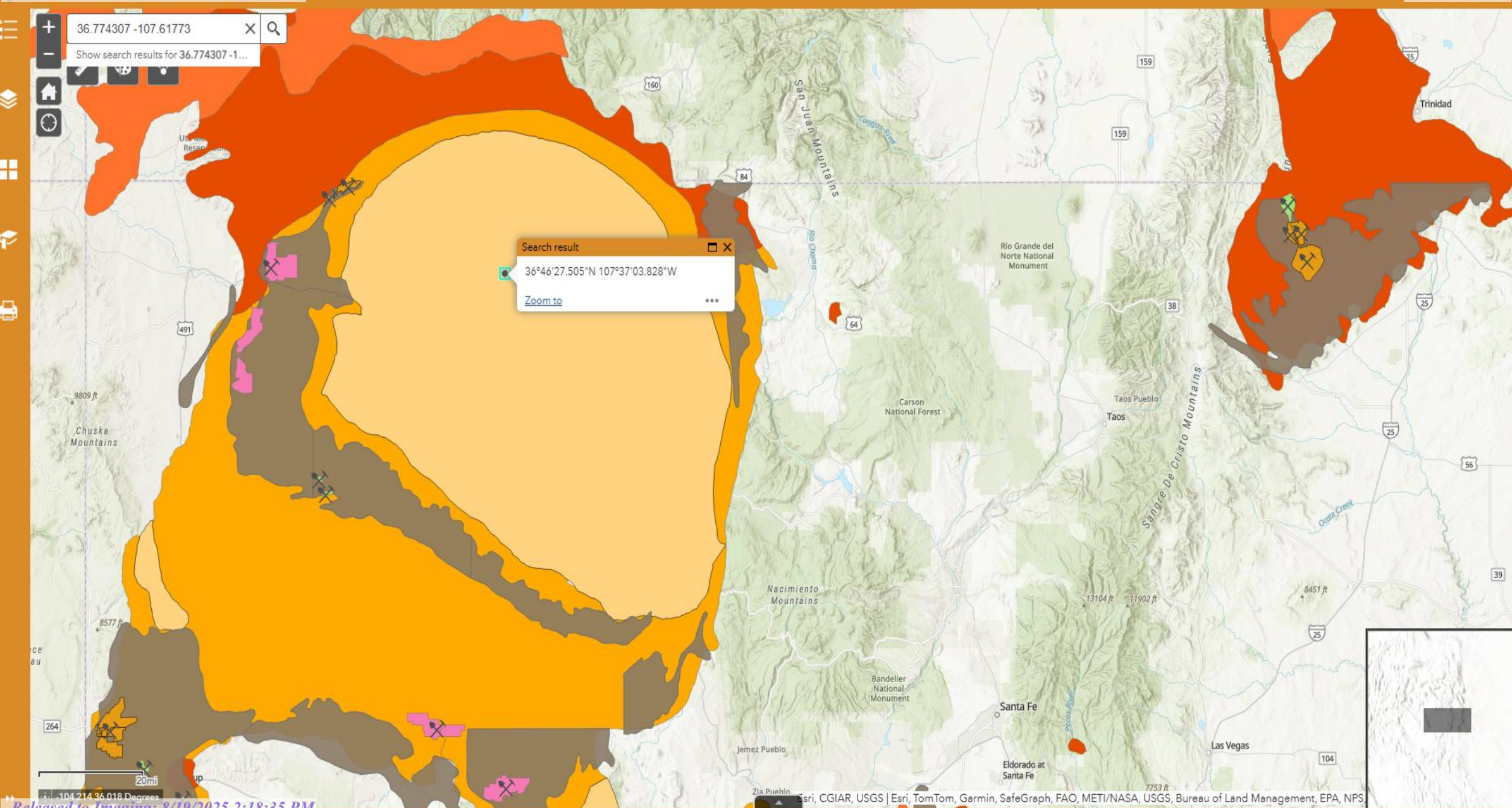
0.4km
0.2mi

-107.63217 36.75330 Degrees

BLM | OCD | NM OSE | Maxar


esri

All rights reserved



quarters are 1=NW 2=NE 3=SW 4=SE
quarters are smallest to largest

NAD83 UTM in meters

Well Tag	POD Nbr	Q64	Q16	Q4	Sec	Tws	Rng	X	Y	Map
	SJ 04021 POD1	NE	NE	NW	09	29N	07W	269881.7	4069806.1	

* UTM location was derived from PLSS - see Help

Driller License:	717	Driller Company:	WESTERN WATER WELLS		
Driller Name:	TERRY HOOD				
Drill Start Date:	2012-09-12	Drill Finish Date:	2012-09-20	Plug Date:	
Log File Date:	2012-09-25	PCW Rcv Date:		Source:	Shallow
Pump Type:		Pipe Discharge Size:		Estimated Yield:	
Casing Size:	4.50	Depth Well:	245	Depth Water:	75

Water Bearing Stratifications:

Top	Bottom	Description
75	105	Sandstone/Gravel/Conglomerate
195	245	Sandstone/Gravel/Conglomerate

Casing Perforations:

Top	Bottom
0	245

The data is furnished by the NMOSE/ISC and is accepted by the recipient with the expressed understanding that the OSE/ISC make no warranties, expressed or implied, concerning the accuracy, completeness, reliability, usability, or suitability for any particular purpose of the data.

National Flood Hazard Layer FIRMette



107°37'23"W 36°46'42"N



0 250 500 1,000 1,500 2,000 Feet 1:6,000

Released to Imaging: 8/19/2025 2:18:35 PM

Basemap Imagery Source: USGS National Map 2023

Legend

SEE FIS REPORT FOR DETAILED LEGEND AND INDEX MAP FOR FIRM PANEL LAYOUT

SPECIAL FLOOD HAZARD AREAS		Without Base Flood Elevation (BFE) Zone A, V, A99
		With BFE or Depth Zone AE, AO, AH, VE, AR
		Regulatory Floodway
OTHER AREAS OF FLOOD HAZARD		0.2% Annual Chance Flood Hazard, Areas of 1% annual chance flood with average depth less than one foot or with drainage areas of less than one square mile Zone X
		Future Conditions 1% Annual Chance Flood Hazard Zone X
		Area with Reduced Flood Risk due to Levee. See Notes. Zone X
		Area with Flood Risk due to Levee Zone D
OTHER AREAS		NO SCREEN Area of Minimal Flood Hazard Zone X
		Effective LOMRs
		Area of Undetermined Flood Hazard Zone D
GENERAL STRUCTURES		Channel, Culvert, or Storm Sewer
		Levee, Dike, or Floodwall
OTHER FEATURES		20.2 Cross Sections with 1% Annual Chance Water Surface Elevation
		17.5 Cross Sections with 1% Annual Chance Water Surface Elevation
		Coastal Transect
		Base Flood Elevation Line (BFE)
		Limit of Study
		Jurisdiction Boundary
		Coastal Transect Baseline
MAP PANELS		Digital Data Available
		No Digital Data Available
		Unmapped



The pin displayed on the map is an approximate point selected by the user and does not represent an authoritative property location.

This map complies with FEMA's standards for the use of digital flood maps if it is not void as described below. The basemap shown complies with FEMA's basemap accuracy standards

The flood hazard information is derived directly from the authoritative NFHL web services provided by FEMA. This map was exported on 8/11/2025 at 4:32 PM and does not reflect changes or amendments subsequent to this date and time. The NFHL and effective information may change or become superseded by new data over time.

This map image is void if the one or more of the following map elements do not appear: basemap imagery, flood zone labels, legend, scale bar, map creation date, community identifiers, FIRM panel number, and FIRM effective date. Map images for unmapped and unmodernized areas cannot be used for regulatory purposes.

Two-Stage Compressor

Compressor Skid Piping

Inlet Piping – Station Header to Suction Scrubber
 1st Stage Suction Header – Suction Scrubber to Suction Bottle
 1st Stage Cooler Discharge – Cooler to Suction Scrubber
 2nd Stage Discharge Header – Discharge Bottle to Cooler
 Final Compressor Discharge – Cooler to Discharge Block Valve

Pressure Level
1
1
2
3
3

Vessels

1st Stage Suction Scrubber
 1st Stage Suction Bottle
 1st Stage Discharge Bottle
 2nd Stage Suction Scrubber
 2nd Stage Suction Bottle
 2nd Stage Discharge Bottle
 *Assumes 2:1 Heads

Pressure Level
1
1
2
2
2
3

Cooler

Interstage Cooler (IC)
 Aftercooler (AC)

Pressure Level
1
2

Cylinders

Cylinder 1
 Cylinder 2
 Cylinder 3
 Cylinder 4

Pressure Level
1
1
2
2

Total Volume at 1st Stage Suction Pressure
 Total Volume at 1st Stage Discharge Pressure
 Total Volume at 2nd Stage Discharge Pressure
 Total Skid Volume

Pressure Level
1
2
3

Actual

Atmospheric Pressure (psia)	11.54
Standard Pressure (psia)	14.696
Standard Temp (°F)	60
Compressibility, z at STP	1

Purge Volume based on Blowdown Procedure

INPUT DATA

PSIG=	10
Atm Press=	11.7
PSIA=	21.7
T (Deg F)=	60
Tr=	520
Z=	0.95
k=	1.32
Diameter=	1.5
Spec. Grav.=	0.55

Ycr=	0.688
------	-------

CFS=	13.303
CFH=	47889.602
CFD=	1149350.454

Purge Time (sec)	20
Total Purge Volume (SCF)	266.053
	0.266

Count	OD (in)	WT (in)	ID (in)
1	8	0.5	7.625
1			
1			
1			
1			

Count	OD (in) Nominal	WT (in)	Length S/S (in)
1	36	0.625	92
1	25	0.5	86
1	23.5	1.25	192
1	36	0.625	92
1	25	0.5	86
1	23.5	1.25	192

Length (in)	O.D (in)	No. tubes	I.D (in)
			-0.098
			-0.098

Count	Bore ID (in)	Stroke (in)	Volume (ft³)
1			0.000
1			0.000
1			0.000
1			0.000

0.000

Actual Volume at P&T (ft³)	Pressure (psig)	Compress,	Temp (°F)
97.301	300	1	60
133.385	489	1	60
41.490	793	1	60
272.176			

0.272 MSCF



Entire Compressor (Single Sta

Purge Volume
Operating Volume
Blowdown + Purge Volume

sec
SCF
MSCF

Equation:
Eq. 3-15
Eq. 3-16

*GPSA Engineering Data Bool

Color	Meaning
 Light Blue	Input Needed
 Light Purple	Calculation

Length (in)	Length (ft)	Volume (ft ³)
240.000	20.000	6.342
	0.000	0.000
	0.000	0.000
	0.000	0.000
	0.000	0.000

Nozzle 1 (Inlet)		Nozzle 2		Nozzle 3
ID (in)	Length (in)	ID (in)	Length (in)	ID (in)
10	9.5	6	8.125	2
6	15	6	13.25	1
7.63	15.5	7.63	15.5	5.76
10	10.125	6	12	2
6	12.25	6	14.625	1
3.44	13.25	3.44	13.25	3.44

Volume per tube (cu.ft)	Total Volume (cu.ft)
0.000	0.000
0.000	0.000

Vol Ratio	Std Volume (scf)
21.199	2062.689
34.060	4543.047
54.746	2271.374
	8877.109

Operating**8.877 MSCF**

ge) Blowdown Volume

0.266	MSCF
8.877	MSCF
9.143	MSCF

--

$$Q=578400 \times d^2 \times Y_{cr} \times (1/(T_f \times G))^{.5} \times P$$

$$Y_{cr} = ((k/Z) \times (2/(k+1))^{((k+1)/(k-1))})^{.5}$$

$$Q = \text{CFD}$$

$$P = \text{Absolute Pressure}$$

$$T_f = \text{Absolute Flowing Temperature (R)}$$

$$G = \text{Specific Gravity}$$

$$Z = Z \text{ @ Flowing Conditions}$$

$$k = \text{Ratio of Specific Heats}$$

¢, 14th Edition – Section 3: Measurement, Orifice Well Test (Page 3-10)

	Shell Volume (ft ³)	Head Volume (ft ³)*	Nozzles Volume (ft ³)	Total Vessel Volume (ft ³)
Length (in)				
7.25	50.494	6.358	0.578	63.787
13.25	22.515	2.094	0.468	27.172
16.25	38.485	1.403	1.065	42.356
7.25	50.494	6.358	0.670	63.879
14.625	22.515	2.094	0.446	27.150
10.5	38.485	1.403	0.199	41.490

	OD (in.)	Wall	Dia (ft)	Radius	Length	Std Vol (ft3	Press (psig	Zavg
Suction header	20	0.5	1.58	0.79	210	413.48	300	0.9971
Discharge header	16	0.375	1.27	0.64	210	266.37	793	0.9925

Note: interconnection piping was calculated with the compressors

Act Vol (ft3)

11.05

18.46

29.51

	OD (in.)	Wall	Dia (ft)	Radius	Length	Std Vol (ft3)	Press (psig)	Zavg
V-101	42	0.5	3.42	1.71	12	110.02	300	0.9971

Act Vol (ft3)

2.94

Compressors	3 units	26.63 Mcf
Vessels		2.94 Mcf
Piping		29.51 Mcf
Total Loss		59.08 Mcf



2030 Afton Place
Farmington, NM 87401
(505) 325-6622

Analysis No: HM20250028
Cust No: 33700-12275

Well/Lease Information

Customer Name:	HARVEST MIDSTREAM	Source:	Suction Inlet
Well Name:	Gobernador Station	Well Flowing:	
County/State:		Pressure:	400 PSIG
Location:		Flow Temp:	70 DEG. F
Lease/PA/CA:		Ambient Temp:	DEG. F
Formation:		Flow Rate:	MCF/D
Cust. Stn. No.:		Sample Method:	
		Sample Date:	02/28/2025
		Sample Time:	2.19 PM
		Sampled By:	Fritz M
		Sampled by (CO):	
Heat Trace:			
Remarks:	Calculated Molecular Weight: 19.966		

Analysis

Component:	Mole%:	Unnormalized %:	**GPM:	*BTU:	*SP Gravity:
Nitrogen	0.0638	0.0654	0.0070	0.00	0.0006
CO2	13.1037	13.4232	2.2410	0.00	0.1991
Methane	85.4749	87.5589	14.5220	863.30	0.4734
Ethane	1.0124	1.0371	0.2710	17.92	0.0105
Propane	0.2695	0.2761	0.0740	6.78	0.0041
Iso-Butane	0.0318	0.0326	0.0100	1.03	0.0006
N-Butane	0.0348	0.0356	0.0110	1.13	0.0007
Neopentane 2,2 dmc3	0.0000	0.0000	0.0000	0.00	0.0000
I-Pentane	0.0068	0.0070	0.0030	0.27	0.0002
N-Pentane	0.0021	0.0022	0.0010	0.09	0.0001
Neohexane	0.0000	N/R	0.0000	0.00	0.0000
2-3-Dimethylbutane	0.0000	N/R	0.0000	0.00	0.0000
Cyclopentane	0.0000	N/R	0.0000	0.00	0.0000
2-Methylpentane	0.0000	N/R	0.0000	0.00	0.0000
3-Methylpentane	0.0000	N/R	0.0000	0.00	0.0000
C6	0.0000	0.0000	0.0000	0.00	0.0000
Methylcyclopentane	0.0000	N/R	0.0000	0.00	0.0000
Benzene	0.0000	N/R	0.0000	0.00	0.0000
Cyclohexane	0.0000	N/R	0.0000	0.00	0.0000
2-Methylhexane	0.0000	N/R	0.0000	0.00	0.0000
3-Methylhexane	0.0000	N/R	0.0000	0.00	0.0000
2-2-4-Trimethylpentane	0.0000	N/R	0.0000	0.00	0.0000
i-heptanes	0.0000	N/R	0.0000	0.00	0.0000
Heptane	0.0000	N/R	0.0000	0.00	0.0000

Methylcyclohexane	0.0000	N/R	0.0000	0.00	0.0000
Toluene	0.0000	N/R	0.0000	0.00	0.0000
2-Methylheptane	0.0000	N/R	0.0000	0.00	0.0000
4-Methylheptane	0.0000	N/R	0.0000	0.00	0.0000
i-Octanes	0.0000	N/R	0.0000	0.00	0.0000
Octane	0.0000	N/R	0.0000	0.00	0.0000
Ethylbenzene	0.0000	N/R	0.0000	0.00	0.0000
m, p Xylene	0.0000	N/R	0.0000	0.00	0.0000
o Xylene (& 2,2,4 tmc7)	0.0000	N/R	0.0000	0.00	0.0000
i-C9	0.0000	N/R	0.0000	0.00	0.0000
C9	0.0000	N/R	0.0000	0.00	0.0000
i-C10	0.0000	N/R	0.0000	0.00	0.0000
C10	0.0000	N/R	0.0000	0.00	0.0000
i-C11	0.0000	N/R	0.0000	0.00	0.0000
C11	0.0000	N/R	0.0000	0.00	0.0000
C12P	0.0000	N/R	0.0000	0.00	0.0000
Helium	0.0000	N/R	0.0000	0.00	0.0000
Total	100.00	102.438	17.140	890.52	0.6893

* @ 14.730 PSIA DRY & UNCORRECTED FOR COMPRESSIBILITY

**@ 14.730 PSIA & 60 DEG. F.

COMPRESSIBILITY FACTOR (1/Z): 1.0024
 BTU/CU.FT IDEAL: 892.6
 BTU/CU.FT (DRY) CORRECTED FOR (1/Z): 894.7
 BTU/CU.FT (WET) CORRECTED FOR (1/Z): 879.1
 DRY BTU @ 15.025: 912.6
 REAL SPECIFIC GRAVITY: 0.6907

CYLINDER #: 1324
 CYLINDER PRESSURE: 405 PSIG
 ANALYSIS DATE: 03/04/2025
 ANALYSIS TIME: 01:28:23 AM
 ANALYSIS RUN BY: ELAINE MORRISON

GPM, BTU, and SPG calculations as shown above are based on current GPA constants.

GPA Standard: GPA 2286-14

GC: SRI Instruments 8610 Last Cal/Verify: 03/04/2025

GC Method: C12+BTEX Gas



HARVEST MIDSTREAM
WELL ANALYSIS COMPARISON

Lease: Gobernador Station

Suction Inlet

03/04/2025

Stn. No.:

33700-12275

Mtr. No.:

Smpl Date:	02/28/2025
Test Date:	03/04/2025
Run No:	HM20250028
Nitrogen:	0.0638
CO2:	13.1037
Methane:	85.4749
Ethane:	1.0124
Propane:	0.2695
I-Butane:	0.0318
N-Butane:	0.0348
2,2 dmc3:	0.0000
I-Pentane:	0.0068
N-Pentane:	0.0021
Neohexane:	0.0000
2-3-	0.0000
Cyclopentane:	0.0000
2-Methylpentane:	0.0000
3-Methylpentane:	0.0000
C6:	0.0000
Methylcyclopentane:	0.0000
Benzene:	0.0000
Cyclohexane:	0.0000
2-Methylhexane:	0.0000
3-Methylhexane:	0.0000
2-2-4-	0.0000
i-heptanes:	0.0000
Heptane:	0.0000
Methylcyclohexane:	0.0000
Toluene:	0.0000
2-Methylheptane:	0.0000
4-Methylheptane:	0.0000
i-Octanes:	0.0000
Octane:	0.0000
Ethylbenzene:	0.0000
m, p Xylene:	0.0000
o Xylene (& 2,2,4	0.0000
i-C9:	0.0000
C9:	0.0000
i-C10:	0.0000
C10:	0.0000
i-C11:	0.0000
C11:	0.0000
C12P:	0.0000
Helium:	0.0000
BTU:	894.7
GPM:	17.1400
SPG:	0.6907

Sante Fe Main Office
Phone: (505) 476-3441

General Information
Phone: (505) 629-6116

Online Phone Directory
<https://www.emnrd.nm.gov/ocd/contact-us>

State of New Mexico
Energy, Minerals and Natural Resources
Oil Conservation Division
1220 S. St Francis Dr.
Santa Fe, NM 87505

QUESTIONS

Action 496381

QUESTIONS

Operator: Harvest Four Corners, LLC 1755 Arroyo Dr Bloomfield, NM 87413	OGRID: 373888
	Action Number: 496381
	Action Type: [C-141] Remediation Closure Request C-141 (C-141-v-Closure)

QUESTIONS

Prerequisites	
Incident ID (n#)	nAPP2513829456
Incident Name	NAPP2513829456 GOBERNADOR COMPRESSOR STATION @ 0
Incident Type	Natural Gas Release
Incident Status	Remediation Closure Report Received
Incident Facility	[fCS00000000015] GOBERNADOR CS

Location of Release Source	
<i>Please answer all the questions in this group.</i>	
Site Name	GOBERNADOR COMPRESSOR STATION
Date Release Discovered	05/17/2025
Surface Owner	Private

Incident Details	
<i>Please answer all the questions in this group.</i>	
Incident Type	Natural Gas Release
Did this release result in a fire or is the result of a fire	Yes
Did this release result in any injuries	No
Has this release reached or does it have a reasonable probability of reaching a watercourse	No
Has this release endangered or does it have a reasonable probability of endangering public health	No
Has this release substantially damaged or will it substantially damage property or the environment	No
Is this release of a volume that is or may with reasonable probability be detrimental to fresh water	No

Nature and Volume of Release	
<i>Material(s) released, please answer all that apply below. Any calculations or specific justifications for the volumes provided should be attached to the follow-up C-141 submission.</i>	
Crude Oil Released (bbls) Details	Not answered.
Produced Water Released (bbls) Details	Not answered.
Is the concentration of chloride in the produced water >10,000 mg/l	No
Condensate Released (bbls) Details	Not answered.
Natural Gas Vented (Mcf) Details	Cause: Equipment Failure Other (Specify) Natural Gas Vented Released: 59 MCF (Unknown Released Amount) Recovered: 0 MCF Lost: 59 MCF.
Natural Gas Flared (Mcf) Details	Not answered.
Other Released Details	Not answered.
Are there additional details for the questions above (i.e. any answer containing Other, Specify, Unknown, and/or Fire, or any negative lost amounts)	Fuel Supply line failed resulting in a fire, station shut down on fire eye detection as soon as fire was detected. Fuel to the fire was stopped when station went down so fire was stopped immediately. The fire did not cause any damage.

Sante Fe Main Office
Phone: (505) 476-3441

General Information
Phone: (505) 629-6116

Online Phone Directory
<https://www.emnrd.nm.gov/ocd/contact-us>

State of New Mexico
Energy, Minerals and Natural Resources
Oil Conservation Division
1220 S. St Francis Dr.
Santa Fe, NM 87505

QUESTIONS, Page 2

Action 496381

QUESTIONS (continued)

Operator: Harvest Four Corners, LLC 1755 Arroyo Dr Bloomfield, NM 87413	OGRID: 373888
	Action Number: 496381
	Action Type: [C-141] Remediation Closure Request C-141 (C-141-v-Closure)

QUESTIONS

Nature and Volume of Release (continued)	
Is this a gas only submission (i.e. only significant Mcf values reported)	Yes, according to supplied volumes this appears to be a "gas only" report.
Was this a major release as defined by Subsection A of 19.15.29.7 NMAC	Yes
Reasons why this would be considered a submission for a notification of a major release	From paragraph A. "Major release" determine using: (2) an unauthorized release of a volume that: (a) results in a fire or is the result of a fire; (3) an unauthorized release of gases exceeding 500 MCF.
With the implementation of the 19.15.27 NMAC (05/25/2021), venting and/or flaring of natural gas (i.e. gas only) are to be submitted on the C-129 form.	

Initial Response

The responsible party must undertake the following actions immediately unless they could create a safety hazard that would result in injury.

The source of the release has been stopped	True
The impacted area has been secured to protect human health and the environment	True
Released materials have been contained via the use of berms or dikes, absorbent pads, or other containment devices	True
All free liquids and recoverable materials have been removed and managed appropriately	True
If all the actions described above have not been undertaken, explain why	Not answered.

Per Paragraph (4) of Subsection B of 19.15.29.8 NMAC the responsible party may commence remediation immediately after discovery of a release. If remediation has begun, please prepare and attach a narrative of actions to date in the follow-up C-141 submission. If remedial efforts have been successfully completed or if the release occurred within a lined containment area (see Subparagraph (a) of Paragraph (5) of Subsection A of 19.15.29.11 NMAC), please prepare and attach all information needed for closure evaluation in the follow-up C-141 submission.

I hereby certify that the information given above is true and complete to the best of my knowledge and understand that pursuant to OCD rules and regulations all operators are required to report and/or file certain release notifications and perform corrective actions for releases which may endanger public health or the environment. The acceptance of a C-141 report by the OCD does not relieve the operator of liability should their operations have failed to adequately investigate and remediate contamination that pose a threat to groundwater, surface water, human health or the environment. In addition, OCD acceptance of a C-141 report does not relieve the operator of responsibility for compliance with any other federal, state, or local laws and/or regulations.

I hereby agree and sign off to the above statement	Name: Chad Snell Title: Environmental Specialist Email: chad.snell@harvestmidstream.com Date: 05/27/2025
--	---

Sante Fe Main Office
Phone: (505) 476-3441

General Information
Phone: (505) 629-6116

Online Phone Directory
<https://www.emnrd.nm.gov/ocd/contact-us>

State of New Mexico
Energy, Minerals and Natural Resources
Oil Conservation Division
1220 S. St Francis Dr.
Santa Fe, NM 87505

QUESTIONS, Page 3

Action 496381

QUESTIONS (continued)

Operator: Harvest Four Corners, LLC 1755 Arroyo Dr Bloomfield, NM 87413	OGRID: 373888
	Action Number: 496381
	Action Type: [C-141] Remediation Closure Request C-141 (C-141-v-Closure)

QUESTIONS

Site Characterization	
<i>Please answer all the questions in this group (only required when seeking remediation plan approval and beyond). This information must be provided to the appropriate district office no later than 90 days after the release discovery date.</i>	
What is the shallowest depth to groundwater beneath the area affected by the release in feet below ground surface (ft bgs)	Less than or equal 25 (ft.)
What method was used to determine the depth to ground water	NM OSE iWaters Database Search
Did this release impact groundwater or surface water	No
What is the minimum distance, between the closest lateral extents of the release and the following surface areas:	
A continuously flowing watercourse or any other significant watercourse	Between 200 and 300 (ft.)
Any lakebed, sinkhole, or playa lake (measured from the ordinary high-water mark)	Between 1000 (ft.) and ½ (mi.)
An occupied permanent residence, school, hospital, institution, or church	Between 1 and 5 (mi.)
A spring or a private domestic fresh water well used by less than five households for domestic or stock watering purposes	Between 1 and 5 (mi.)
Any other fresh water well or spring	Between 1 and 5 (mi.)
Incorporated municipal boundaries or a defined municipal fresh water well field	Greater than 5 (mi.)
A wetland	Between 200 and 300 (ft.)
A subsurface mine	Greater than 5 (mi.)
An (non-karst) unstable area	Greater than 5 (mi.)
Categorize the risk of this well / site being in a karst geology	None
A 100-year floodplain	Between ½ and 1 (mi.)
Did the release impact areas not on an exploration, development, production, or storage site	No

Remediation Plan	
<i>Please answer all the questions that apply or are indicated. This information must be provided to the appropriate district office no later than 90 days after the release discovery date.</i>	
Requesting a remediation plan approval with this submission	Yes
<i>Attach a comprehensive report demonstrating the lateral and vertical extents of soil contamination associated with the release have been determined, pursuant to 19.15.29.11 NMAC and 19.15.29.13 NMAC.</i>	
Have the lateral and vertical extents of contamination been fully delineated	Yes
Was this release entirely contained within a lined containment area	Yes
<i>Per Subsection B of 19.15.29.11 NMAC unless the site characterization report includes completed efforts at remediation, the report must include a proposed remediation plan in accordance with 19.15.29.12 NMAC, which includes the anticipated timelines for beginning and completing the remediation.</i>	
On what estimated date will the remediation commence	05/18/2025
On what date will (or did) the final sampling or liner inspection occur	07/15/2025
On what date will (or was) the remediation complete(d)	05/18/2025
What is the estimated surface area (in square feet) that will be remediated	0
What is the estimated volume (in cubic yards) that will be remediated	0
<i>These estimated dates and measurements are recognized to be the best guess or calculation at the time of submission and may (be) change(d) over time as more remediation efforts are completed.</i>	
<i>The OCD recognizes that proposed remediation measures may have to be minimally adjusted in accordance with the physical realities encountered during remediation. If the responsible party has any need to significantly deviate from the remediation plan proposed, then it should consult with the division to determine if another remediation plan submission is required.</i>	

Sante Fe Main Office
Phone: (505) 476-3441

General Information
Phone: (505) 629-6116

Online Phone Directory
<https://www.emnrd.nm.gov/ocd/contact-us>

State of New Mexico
Energy, Minerals and Natural Resources
Oil Conservation Division
1220 S. St Francis Dr.
Santa Fe, NM 87505

QUESTIONS, Page 4

Action 496381

QUESTIONS (continued)

Operator: Harvest Four Corners, LLC 1755 Arroyo Dr Bloomfield, NM 87413	OGRID: 373888
	Action Number: 496381
	Action Type: [C-141] Remediation Closure Request C-141 (C-141-v-Closure)

QUESTIONS

Remediation Plan (continued)	
<i>Please answer all the questions that apply or are indicated. This information must be provided to the appropriate district office no later than 90 days after the release discovery date.</i>	
This remediation will (or is expected to) utilize the following processes to remediate / reduce contaminants:	
(Select all answers below that apply.)	
Is (or was) there affected material present needing to be removed	No
Is (or was) there a power wash of the lined containment area (to be) performed	No
OTHER (Non-listed remedial process)	Yes
Other Non-listed Remedial Process. Please specify	No remediation action needed
<i>Per Subsection B of 19.15.29.11 NMAC unless the site characterization report includes completed efforts at remediation, the report must include a proposed remediation plan in accordance with 19.15.29.12 NMAC, which includes the anticipated timelines for beginning and completing the remediation.</i>	
I hereby certify that the information given above is true and complete to the best of my knowledge and understand that pursuant to OCD rules and regulations all operators are required to report and/or file certain release notifications and perform corrective actions for releases which may endanger public health or the environment. The acceptance of a C-141 report by the OCD does not relieve the operator of liability should their operations have failed to adequately investigate and remediate contamination that pose a threat to groundwater, surface water, human health or the environment. In addition, OCD acceptance of a C-141 report does not relieve the operator of responsibility for compliance with any other federal, state, or local laws and/or regulations.	
I hereby agree and sign off to the above statement	Name: Chad Snell Title: Environmental Specialist Email: chad.snell@harvestmidstream.com Date: 08/15/2025
<i>The OCD recognizes that proposed remediation measures may have to be minimally adjusted in accordance with the physical realities encountered during remediation. If the responsible party has any need to significantly deviate from the remediation plan proposed, then it should consult with the division to determine if another remediation plan submission is required.</i>	

Sante Fe Main Office
Phone: (505) 476-3441

General Information
Phone: (505) 629-6116

Online Phone Directory
<https://www.emnrd.nm.gov/ocd/contact-us>

State of New Mexico
Energy, Minerals and Natural Resources
Oil Conservation Division
1220 S. St Francis Dr.
Santa Fe, NM 87505

QUESTIONS, Page 6

Action 496381

QUESTIONS (continued)

Operator: Harvest Four Corners, LLC 1755 Arroyo Dr Bloomfield, NM 87413	OGRID: 373888
	Action Number: 496381
	Action Type: [C-141] Remediation Closure Request C-141 (C-141-v-Closure)

QUESTIONS

Liner Inspection Information	
Last liner inspection notification (C-141L) recorded	495416
Liner inspection date pursuant to Subparagraph (a) of Paragraph (5) of Subsection A of 19.15.29.11 NMAC	07/15/2025
Was all the impacted materials removed from the liner	Yes
What was the liner inspection surface area in square feet	400

Remediation Closure Request

Only answer the questions in this group if seeking remediation closure for this release because all remediation steps have been completed.

Requesting a remediation closure approval with this submission	Yes
Have the lateral and vertical extents of contamination been fully delineated	Yes
Was this release entirely contained within a lined containment area	Yes
What was the total surface area (in square feet) remediated	0
What was the total volume (cubic yards) remediated	0
Summarize any additional remediation activities not included by answers (above)	No remediation activities performed due to no impact to the soil.

The responsible party must attach information demonstrating they have complied with all applicable closure requirements and any conditions or directives of the OCD. This demonstration should be in the form of a comprehensive report (in .pdf format) including a scaled site map, sampling diagrams, relevant field notes, photographs of any excavation prior to backfilling, laboratory data including chain of custody documents of final sampling, and a narrative of the remedial activities. Refer to 19.15.29.12 NMAC.

I hereby certify that the information given above is true and complete to the best of my knowledge and understand that pursuant to OCD rules and regulations all operators are required to report and/or file certain release notifications and perform corrective actions for releases which may endanger public health or the environment. The acceptance of a C-141 report by the OCD does not relieve the operator of liability should their operations have failed to adequately investigate and remediate contamination that pose a threat to groundwater, surface water, human health or the environment. In addition, OCD acceptance of a C-141 report does not relieve the operator of responsibility for compliance with any other federal, state, or local laws and/or regulations. The responsible party acknowledges they must substantially restore, reclaim, and re-vegetate the impacted surface area to the conditions that existed prior to the release or their final land use in accordance with 19.15.29.13 NMAC including notification to the OCD when reclamation and re-vegetation are complete.

I hereby agree and sign off to the above statement	Name: Chad Snell Title: Environmental Specialist Email: chad.snell@harvestmidstream.com Date: 08/15/2025
--	--

Sante Fe Main Office
Phone: (505) 476-3441

General Information
Phone: (505) 629-6116

Online Phone Directory
<https://www.emnrd.nm.gov/ocd/contact-us>

State of New Mexico
Energy, Minerals and Natural Resources
Oil Conservation Division
1220 S. St Francis Dr.
Santa Fe, NM 87505

CONDITIONS

Action 496381

CONDITIONS

Operator: Harvest Four Corners, LLC 1755 Arroyo Dr Bloomfield, NM 87413	OGRID: 373888
	Action Number: 496381
	Action Type: [C-141] Remediation Closure Request C-141 (C-141-v-Closure)

CONDITIONS

Created By	Condition	Condition Date
michael.buchanan	The Remediation Report and Closure Request are approved.	8/19/2025
michael.buchanan	The acceptance of this report by the OCD does not relieve the operator of liability should their operations have failed to adequately investigate and remediate contamination that pose a threat to groundwater, surface water, human health or the environment; or if the location fails to revegetate properly. In addition, the OCD approval does not relieve the responsible party of compliance with any other federal, state, or local laws and/or regulations.	8/19/2025