



## SITE INFORMATION

---

**Closure Report**  
**Tomahawk Federal 20 O CTB (12.27.24)**  
**Incident ID: nAPP2436328681**  
**Eddy County, New Mexico**  
**Unit O Sec 20 T24S R28E**  
**32.196921°, -104.108698°**

**Produced Water Release**  
**Point of Release: Pump failure**  
**Release Date: 12/27/2024**  
**Volume Released: 220 barrels of Produced Water**  
**Volume Recovered: 220 barrels of Produced Water**

CARMONA RESOURCES



**Prepared for:**  
**Concho Operating, LLC**  
**600 West Illinois Avenue**  
**Midland, Texas 79701**

**Prepared by:**  
**Carmona Resources, LLC**  
**310 West Wall Street**  
**Suite 500**  
**Midland, Texas 79701**



## TABLE OF CONTENTS

---

### 1.0 SITE INFORMATION AND BACKGROUND

### 2.0 SITE CHARACTERIZATION AND GROUNDWATER

### 3.0 NMAC REGULATORY CRITERIA

### 4.0 LINER INSPECTION ACTIVITIES

### 5.0 CONCLUSIONS

#### FIGURES

FIGURE 1	OVERVIEW	FIGURE 2	TOPOGRAPHIC
----------	----------	----------	-------------

FIGURE 3	SECONDARY CONTAINMENT MAP
----------	---------------------------

#### APPENDICES

APPENDIX A	PHOTOS
------------	--------

APPENDIX B	N.O.R AND C-141/NMOCD CORRESPONDENCE
------------	--------------------------------------

APPENDIX C	SITE CHARACTERIZATION AND GROUNDWATER
------------	---------------------------------------

September 2, 2025

Mike Bratcher  
District Supervisor  
Oil Conservation Division, District 2  
811 S. First Street  
Artesia, New Mexico 88210

**Re: Closure Report**  
**Tomahawk Federal 20 O CTB (12.27.24)**  
**Concho Operating, LLC**  
**Incident ID: nAPP2436328681**  
**Site Location: Unit O, S20, T24S, R28E**  
**(Lat 32.196921°, Long -104.108698°)**  
**Eddy County, New Mexico**

Mr. Bratcher:

On behalf of Concho Operating, LLC (COG), Carmona Resources, LLC has prepared this letter to document site activities for Tomahawk Federal O CTB. The site is located at 32.196921°, -104.108698° within Unit O, S20, T24S, R28E, in Eddy County, New Mexico (Figures 1 and 2).

### **1.0 Site Information and Background**

Based on the Notice of Release and initial C-141 obtained from the New Mexico Oil Conservation Division (NMOCD), the release was discovered on December 27, 2024, due to a failure of a pump. The incident resulted in approximately two hundred-twenty (220) barrels of produced water being released, while two hundred-twenty (220) barrels of produced water were recovered within the lined facility. See Figure 3 for the secondary containment map. The Notice of Release and initial C-141 documents are attached in Appendix B.

### **2.0 Site Characterization and Groundwater**

The site is located within a medium karst area. Based on a review of the New Mexico Office of State Engineers and USGS databases, no known water sources are within a 0.50-mile radius of the location. The nearest identified water well is located approximately 0.96 miles Northeast of the site in S20, T24S, R28E and was drilled in 1954. The well has a reported depth to groundwater of 48' feet below ground surface (ft bgs). A copy of the associated point of diversion is attached in Appendix C.

### **3.0 Site Characterization and Groundwater**

Per the NMOCD regulatory criteria established in 19.15.29.12 NMAC, the following criteria were utilized in assessing the site.

- Benzene: 10 milligrams per kilogram (mg/kg).
- Benzene, toluene, ethylbenzene, and total xylenes (BTEX): 50 mg/kg.
- TPH: 100 mg/kg (GRO + DRO + MRO).
- Chloride: 600 mg/kg.



#### **4.0 Liner Inspection Activities**

Before conducting the liner inspection, a crew was onsite to remove all freestanding fluids within the lined facility. Once the plastic liner was thoroughly cleaned, the NMOCD division office was notified via NMOCD portal on July 10, 2025, per Subsection D of 19.15.29.12 NMAC. See Appendix B for the NMOCD correspondence prior to performing the liner inspection. On July 14, 2025, Carmona Resources, LLC conducted liner inspection activities to assess the liner's integrity within the facility and determined the liner was intact with no integrity issues. Refer to the Photolog for details.

#### **5.0 Conclusions**

Based on the liner inspection throughout the facility, no further actions are required at the site. COG formally requests closure of the spill. If you have any questions regarding this report or need additional information, don't hesitate to contact us at 432-813-1992.

Sincerely,

**Carmona Resources, LLC**

Conner Moehring  
Environmental Manager

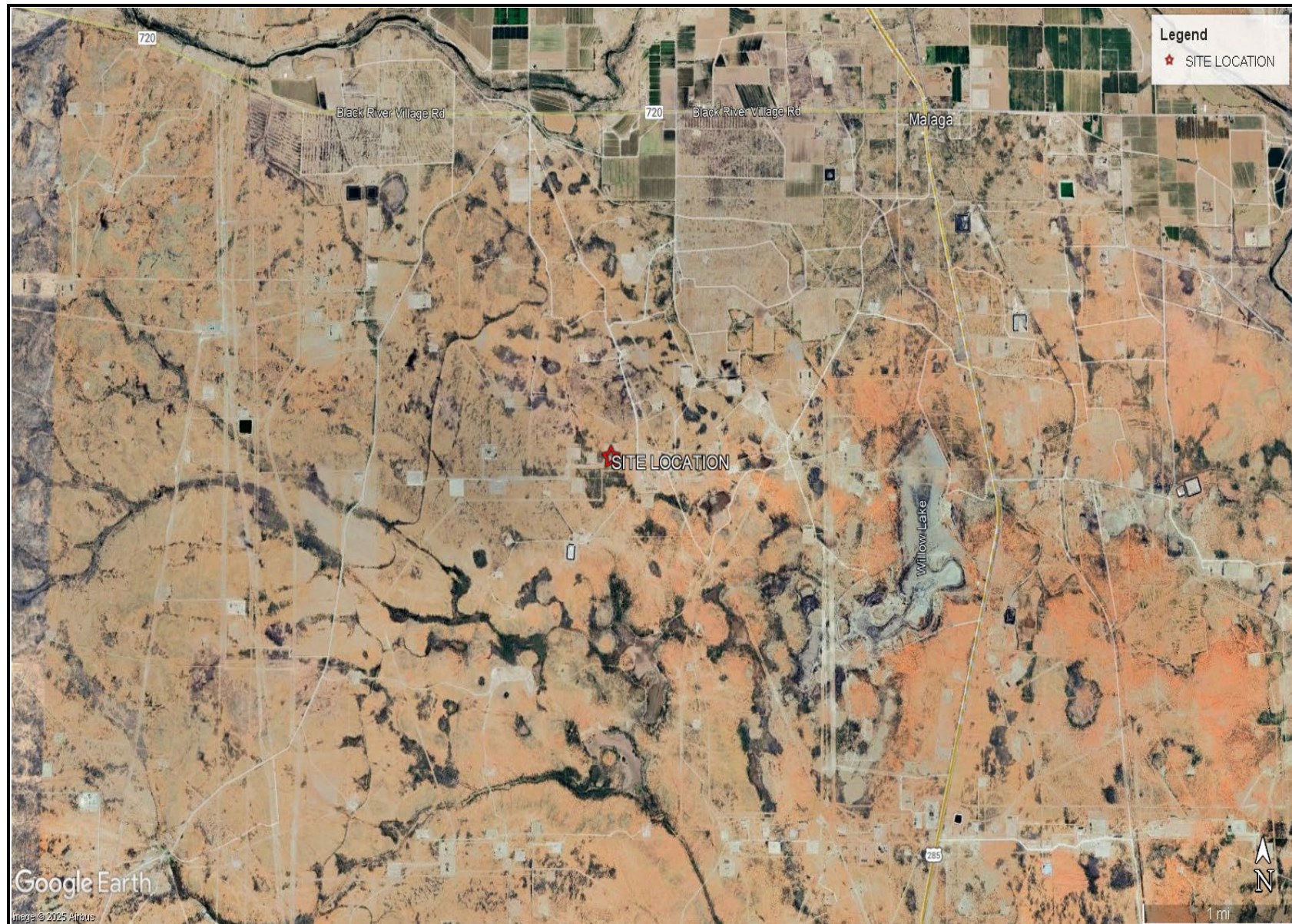
Stephen Reyes  
Environmental Engineer

## FIGURES

CARMONA RESOURCES





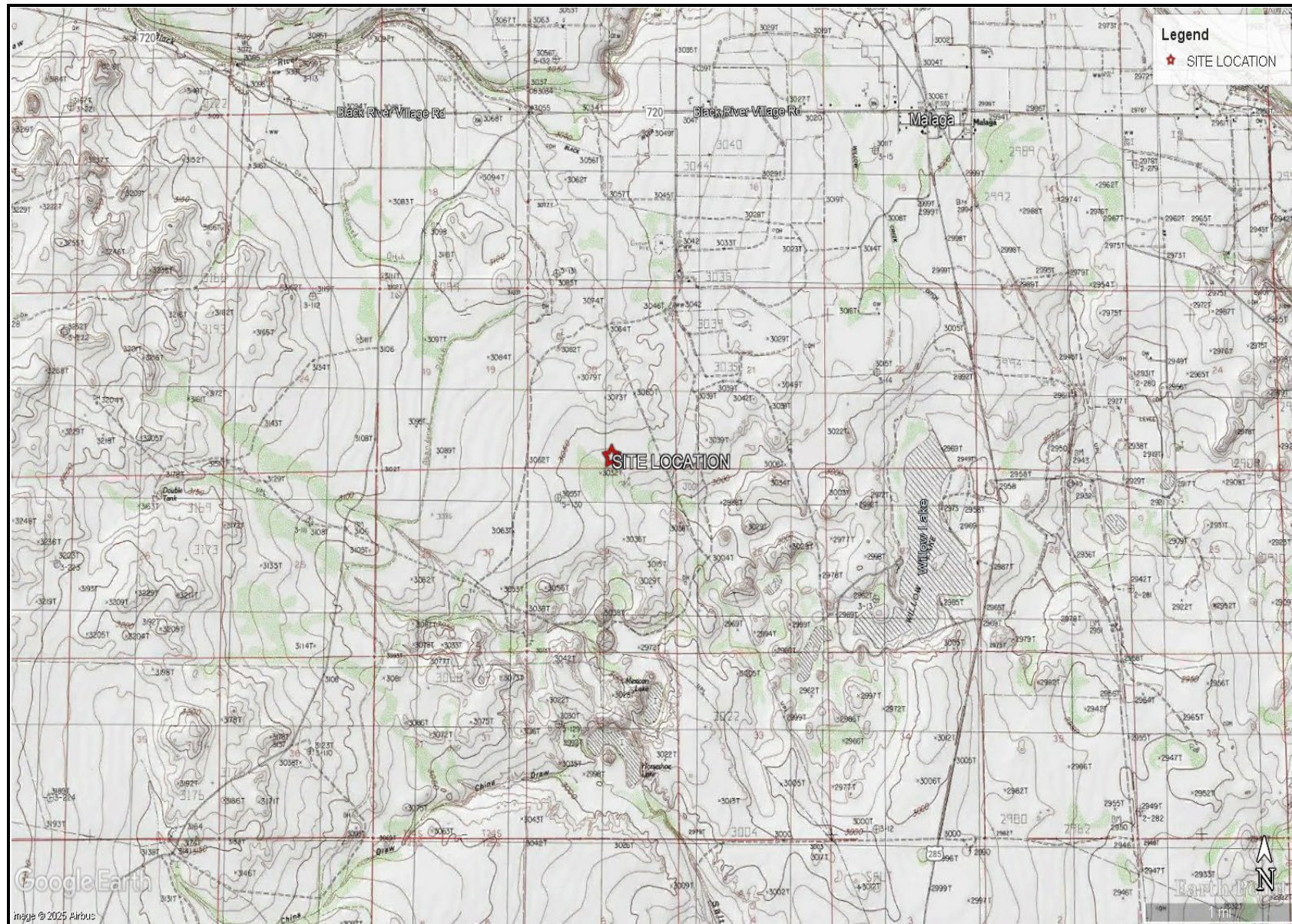


OVERVIEW MAP  
COG OPERATING, LLC  
TOMAHAWK FEDERAL 20 O CTB (12.27.24)  
EDDY COUNTY, NEW MEXICO  
32.196921°, -104.108698°



FIGURE 1



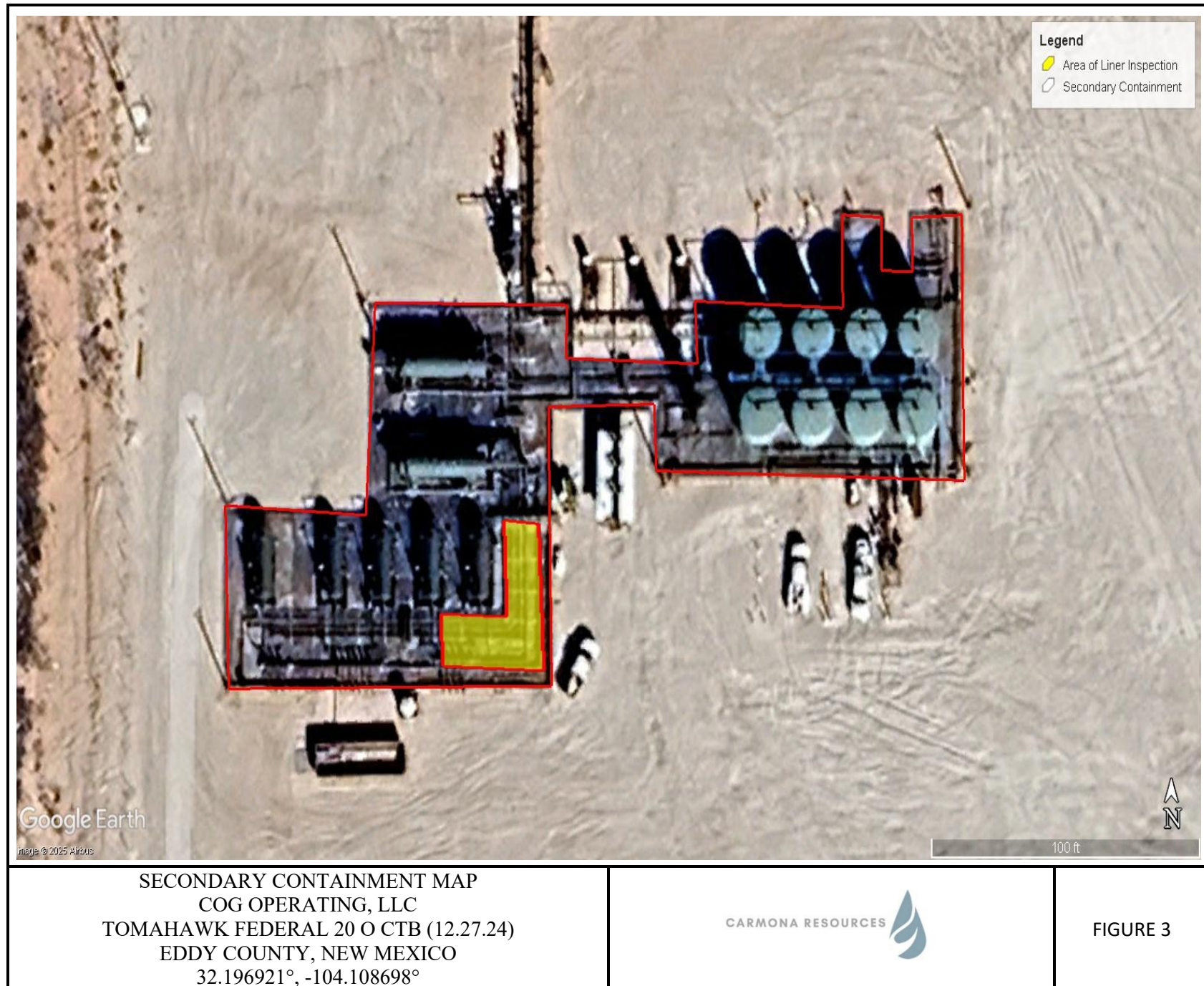


TOPOGRAPHIC MAP  
 COG OPERATING, LLC  
 TOMAHAWK FEDERAL 20 O CTB (12.27.24)  
 EDDY COUNTY, NEW MEXICO  
 32.196921°, -104.108698°



FIGURE 2







## APPENDIX A

CARMONA RESOURCES



## PHOTOGRAPHIC LOG

COG Operating, LLC

### Photograph No. 1

**Facility:** Tomahawk Federal 20 O CTB  
(12.27.24)

**County:** Eddy County, New Mexico

**Description:**

View South of the exposed liner. The red outline is the area of the liner inspection.



### Photograph No. 2

**Facility:** Tomahawk Federal 20 O CTB  
(12.27.24)

**County:** Eddy County, New Mexico

**Description:**

View Southeast of the exposed liner. The red outline is the area of the liner inspection.



## APPENDIX B

CARMONA RESOURCES





Received by OCD: 9/4/2025 12:00:24 AM

Page 12 of 39

Facility Name & Number:  
 Asset Area:  
 Release Discovery Date & Time:  
 Release Type:  
 Provide any known details about the event:

Tomahawk Fed 20 O

DBW North

12/27/2024 07:40am

Produced Water

Hole in welded 90 off transfer pump

## Spill Calculation - On Pad Surface Pool Spill

Convert Irregular shape into a series of rectangles	Length (ft.)	Width (ft.)	Deepest point in each of the areas (in.)	No. of boundaries of "shore" in each area	Estimated <u>Pool</u> Area (sq. ft.)	Estimated Average Depth (ft.)	Estimated volume of each pool area (bbl.)	Penetration allowance (ft.)	Total Estimated Volume of Spill (bbl.)
Rectangle A	69.0	153.0	2.20	4	10557.000	0.046	86.128	0.002	86.325
Rectangle B	81.0	90.0	2.15	4	7290.000	0.045	58.123	0.002	58.253
Rectangle C	53.0	12.0	2.10	4	636.000	0.044	4.953	0.002	4.964
Rectangle D	63.0	129.0	2.10	4	8127.000	0.044	63.289	0.002	63.427
Rectangle E	30.0	18.0	2.00	4	540.000	0.042	4.005	0.002	4.013
Rectangle F	30.0	18.0	2.00	4	540.000	0.042	4.005	0.002	4.013
Rectangle G					0.000	#DIV/0!	#DIV/0!	#DIV/0!	#DIV/0!
Rectangle H					0.000	#DIV/0!	#DIV/0!	#DIV/0!	#DIV/0!
Rectangle I					0.000	#DIV/0!	#DIV/0!	#DIV/0!	#DIV/0!
					0.000	#DIV/0!	#DIV/0!	#DIV/0!	#DIV/0!

Released to Imaging: 9/15/2025 8:51:15 AM

Total Volume Release:

220.995

Sante Fe Main Office  
Phone: (505) 476-3441

General Information  
Phone: (505) 629-6116

Online Phone Directory  
<https://www.emnrd.nm.gov/ocd/contact-us>

State of New Mexico  
Energy, Minerals and Natural Resources  
Oil Conservation Division  
1220 S. St Francis Dr.  
Santa Fe, NM 87505

QUESTIONS

Action 420126

QUESTIONS

Operator: COG OPERATING LLC 600 W Illinois Ave Midland, TX 79701	OGRID: 229137
	Action Number: 420126
	Action Type: [C-141] Initial C-141 (C-141-v-Initial)

QUESTIONS

Prerequisites	
Incident ID (n#)	nAPP2436328681
Incident Name	NAPP2436328681 TOMAHAWK FEDERAL 20 O CTB @ 0
Incident Type	Produced Water Release
Incident Status	Initial C-141 Received
Incident Facility	[fAPP2203451054] TOMAHAWK FED 20-O CTB SAT

Location of Release Source	
Please answer all the questions in this group.	
Site Name	Tomahawk Federal 20 O CTB
Date Release Discovered	12/27/2024
Surface Owner	Private

Incident Details	
Please answer all the questions in this group.	
Incident Type	Produced Water Release
Did this release result in a fire or is the result of a fire	No
Did this release result in any injuries	No
Has this release reached or does it have a reasonable probability of reaching a watercourse	No
Has this release endangered or does it have a reasonable probability of endangering public health	No
Has this release substantially damaged or will it substantially damage property or the environment	No
Is this release of a volume that is or may with reasonable probability be detrimental to fresh water	No

Nature and Volume of Release	
Material(s) released, please answer all that apply below. Any calculations or specific justifications for the volumes provided should be attached to the follow-up C-141 submission.	
Crude Oil Released (bbls) Details	Not answered.
Produced Water Released (bbls) Details	Cause: Other   Pump   Produced Water   Released: 220 BBL (Unknown Released Amount)   Recovered: 220 BBL   Lost: 0 BBL.
Is the concentration of chloride in the produced water >10,000 mg/l	Yes
Condensate Released (bbls) Details	Not answered.
Natural Gas Vented (Mcf) Details	Not answered.
Natural Gas Flared (Mcf) Details	Not answered.
Other Released Details	Not answered.
Are there additional details for the questions above (i.e. any answer containing Other, Specify, Unknown, and/or Fire, or any negative lost amounts)	Not answered.

Sante Fe Main Office  
Phone: (505) 476-3441

General Information  
Phone: (505) 629-6116

Online Phone Directory  
<https://www.emnrd.nm.gov/ocd/contact-us>

**State of New Mexico**  
**Energy, Minerals and Natural Resources**  
**Oil Conservation Division**  
**1220 S. St Francis Dr.**  
**Santa Fe, NM 87505**

QUESTIONS, Page 2

Action 420126

**QUESTIONS (continued)**

Operator: COG OPERATING LLC 600 W Illinois Ave Midland, TX 79701	OGRID: 229137
	Action Number: 420126
	Action Type: [C-141] Initial C-141 (C-141-v-Initial)

**QUESTIONS**

<b>Nature and Volume of Release (continued)</b>	
Is this a gas only submission (i.e. only significant Mcf values reported)	No, according to supplied volumes this does not appear to be a "gas only" report.
Was this a major release as defined by Subsection A of 19.15.29.7 NMAC	Yes
Reasons why this would be considered a submission for a notification of a major release	From paragraph A. "Major release" determine using: (1) an unauthorized release of a volume, excluding gases, of 25 barrels or more.
With the implementation of the 19.15.27 NMAC (05/25/2021), venting and/or flaring of natural gas (i.e. gas only) are to be submitted on the C-129 form.	

**Initial Response**

The responsible party must undertake the following actions immediately unless they could create a safety hazard that would result in injury.

The source of the release has been stopped	True
The impacted area has been secured to protect human health and the environment	True
Released materials have been contained via the use of berms or dikes, absorbent pads, or other containment devices	True
All free liquids and recoverable materials have been removed and managed appropriately	True
If all the actions described above have not been undertaken, explain why	Not answered.

Per Paragraph (4) of Subsection B of 19.15.29.8 NMAC the responsible party may commence remediation immediately after discovery of a release. If remediation has begun, please prepare and attach a narrative of actions to date in the follow-up C-141 submission. If remedial efforts have been successfully completed or if the release occurred within a lined containment area (see Subparagraph (a) of Paragraph (5) of Subsection A of 19.15.29.11 NMAC), please prepare and attach all information needed for closure evaluation in the follow-up C-141 submission.

I hereby certify that the information given above is true and complete to the best of my knowledge and understand that pursuant to OCD rules and regulations all operators are required to report and/or file certain release notifications and perform corrective actions for releases which may endanger public health or the environment. The acceptance of a C-141 report by the OCD does not relieve the operator of liability should their operations have failed to adequately investigate and remediate contamination that pose a threat to groundwater, surface water, human health or the environment. In addition, OCD acceptance of a C-141 report does not relieve the operator of responsibility for compliance with any other federal, state, or local laws and/or regulations.

I hereby agree and sign off to the above statement	Name: Brittany Esparza Title: Environmental Technician Email: brittany.Esparza@ConocoPhillips.com Date: 01/13/2025
--	---



Sante Fe Main Office  
Phone: (505) 476-3441

General Information  
Phone: (505) 629-6116

Online Phone Directory  
<https://www.emnrd.nm.gov/ocd/contact-us>

**State of New Mexico**  
**Energy, Minerals and Natural Resources**  
**Oil Conservation Division**  
**1220 S. St Francis Dr.**  
**Santa Fe, NM 87505**

QUESTIONS, Page 3

Action 420126

**QUESTIONS (continued)**

Operator: COG OPERATING LLC 600 W Illinois Ave Midland, TX 79701	OGRID: 229137
	Action Number: 420126
	Action Type: [C-141] Initial C-141 (C-141-v-Initial)

**QUESTIONS**

<b>Site Characterization</b>	
<i>Please answer all the questions in this group (only required when seeking remediation plan approval and beyond). This information must be provided to the appropriate district office no later than 90 days after the release discovery date.</i>	
What is the shallowest depth to groundwater beneath the area affected by the release in feet below ground surface (ft bgs)	Not answered.
What method was used to determine the depth to ground water	Not answered.
Did this release impact groundwater or surface water	Not answered.
<b>What is the minimum distance, between the closest lateral extents of the release and the following surface areas:</b>	
A continuously flowing watercourse or any other significant watercourse	Not answered.
Any lakebed, sinkhole, or playa lake (measured from the ordinary high-water mark)	Not answered.
An occupied permanent residence, school, hospital, institution, or church	Not answered.
A spring or a private domestic fresh water well used by less than five households for domestic or stock watering purposes	Not answered.
Any other fresh water well or spring	Not answered.
Incorporated municipal boundaries or a defined municipal fresh water well field	Not answered.
A wetland	Not answered.
A subsurface mine	Not answered.
An (non-karst) unstable area	Not answered.
Categorize the risk of this well / site being in a karst geology	Not answered.
A 100-year floodplain	Not answered.
Did the release impact areas not on an exploration, development, production, or storage site	Not answered.

<b>Remediation Plan</b>	
<i>Please answer all the questions that apply or are indicated. This information must be provided to the appropriate district office no later than 90 days after the release discovery date.</i>	
Requesting a remediation plan approval with this submission	No
<i>The OCD recognizes that proposed remediation measures may have to be minimally adjusted in accordance with the physical realities encountered during remediation. If the responsible party has any need to significantly deviate from the remediation plan proposed, then it should consult with the division to determine if another remediation plan submission is required.</i>	

Sante Fe Main Office  
Phone: (505) 476-3441

General Information  
Phone: (505) 629-6116

Online Phone Directory  
<https://www.emnrd.nm.gov/oed/contact-us>

State of New Mexico  
Energy, Minerals and Natural Resources  
Oil Conservation Division  
1220 S. St Francis Dr.  
Santa Fe, NM 87505

CONDITIONS

Action 420126

CONDITIONS

Operator: COG OPERATING LLC 600 W Illinois Ave Midland, TX 79701	OGRID: 229137
	Action Number: 420126
	Action Type: [C-141] Initial C-141 (C-141-v-Initial)

CONDITIONS

Created By	Condition	Condition Date
nvez	None	1/15/2025

Sante Fe Main Office  
Phone: (505) 476-3441

General Information  
Phone: (505) 629-6116

Online Phone Directory  
<https://www.emnrd.nm.gov/ocd/contact-us>

**State of New Mexico**  
**Energy, Minerals and Natural Resources**  
**Oil Conservation Division**  
**1220 S. St Francis Dr.**  
**Santa Fe, NM 87505**

QUESTIONS

Action 483842

## QUESTIONS

Operator: COG OPERATING LLC 600 W Illinois Ave Midland, TX 79701	OGRID: 229137
	Action Number: 483842
	Action Type: [NOTIFY] Notification Of Liner Inspection (C-141L)

## QUESTIONS

Prerequisites	
Incident ID (n#)	nAPP2436328681
Incident Name	NAPP2436328681 TOMAHAWK FEDERAL 20 O CTB @ 0
Incident Type	Produced Water Release
Incident Status	Initial C-141 Approved
Incident Facility	[fAPP2203451054] TOMAHAWK FED 20-O CTB SAT

Location of Release Source	
Site Name	Tomahawk Federal 20 O CTB
Date Release Discovered	12/27/2024
Surface Owner	Private

Liner Inspection Event Information	
Please answer all the questions in this group.	
What is the liner inspection surface area in square feet	150
Have all the impacted materials been removed from the liner	Yes
Liner inspection date pursuant to Subparagraph (a) of Paragraph (5) of Subsection A of 19.15.29.11 NMAC	07/14/2025
Time liner inspection will commence	09:30 AM
Please provide any information necessary for observers to liner inspection	Carmona Resources – 432-813-6823
Please provide any information necessary for navigation to liner inspection site	Information on C-141



Sante Fe Main Office  
Phone: (505) 476-3441

General Information  
Phone: (505) 629-6116

Online Phone Directory  
<https://www.emnrd.nm.gov/oed/contact-us>

State of New Mexico  
Energy, Minerals and Natural Resources  
Oil Conservation Division  
1220 S. St Francis Dr.  
Santa Fe, NM 87505

CONDITIONS

Action 483842

CONDITIONS

Operator: COG OPERATING LLC 600 W Illinois Ave Midland, TX 79701	OGRID: 229137
	Action Number: 483842
	Action Type: [NOTIFY] Notification Of Liner Inspection (C-141L)

CONDITIONS

Created By	Condition	Condition Date
jacquih	Failure to notify the OCD of liner inspections including any changes in date/time per the requirements of 19.15.29.11.A(5)(a)(ii) NMAC, may result in the inspection not being accepted.	7/10/2025

## APPENDIX C

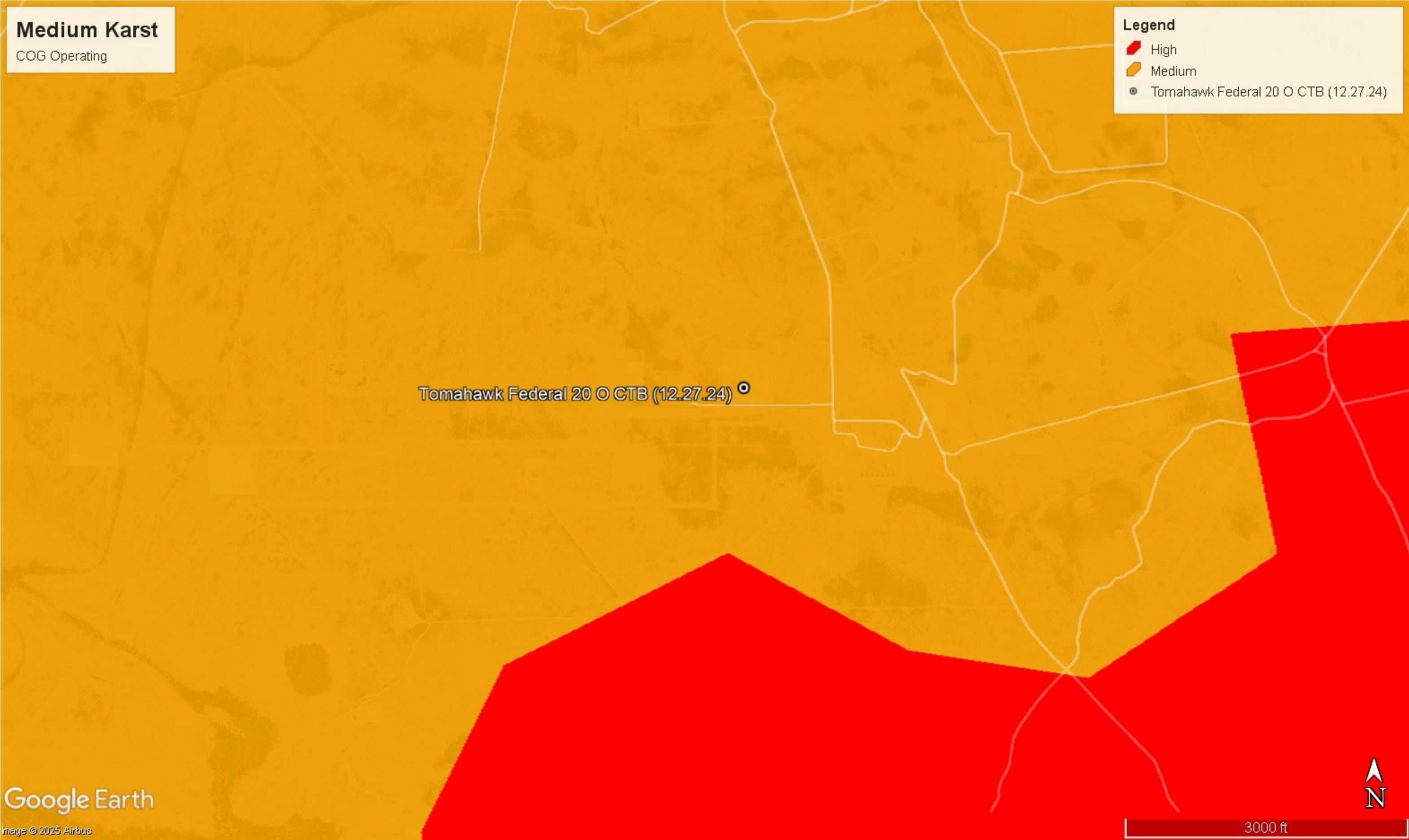
CARMONA RESOURCES













# New Mexico Office of the State Engineer

## Water Column/Average Depth to Water

(A CLW##### in the POD suffix indicates the POD has been replaced & no longer serves a water right file.)

(R=POD has been replaced,  
O=orphaned,  
C=the file is closed)

(quarters are 1=NW 2=NE 3=SW 4=SE)

(quarters are smallest to largest)

(NAD83 UTM in meters)

(In feet)

POD Number	POD Sub-Code	basin	County	Q 64	Q 16	Q 4	Sec	Tws	Rng	X	Y	Depth Well	Depth Water	Water Column
<a href="#">C 00232</a>	CUB	ED		1	3	2	07	24S	28E	582362	3566826*	160		
<a href="#">C 00329</a>	C	ED		2	1	2	13	24S	28E	590682	3565677*	95	30	65
<a href="#">C 00346</a>	C	ED		2	2	15		24S	28E	587715	3565591*	90	32	58
<a href="#">C 00353</a>	C	CUB	ED	3	4	13		24S	28E	590603	3564367*	2726		
<a href="#">C 00354</a>	C	CUB	ED	4	4	13		24S	28E	591005	3564367*	2739		
<a href="#">C 00361</a>	C	CUB	ED	3	3	08		24S	28E	583283	3565926*	2575		
<a href="#">C 00365</a>	CUB	ED		2	4	1	17	24S	28E	583791	3565226*	238	26	212
<a href="#">C 00406</a>	C	ED		1	1	08		24S	28E	583270	3567142*	78	50	28
<a href="#">C 00464</a>	CUB	ED		2	2	1	13	24S	28E	590277	3565674*	111	28	83
<a href="#">C 00488</a>	C	ED		2	1	2	15	24S	28E	587412	3565688*	64	8	56
<a href="#">C 00511</a>	C	ED		2	3	02		24S	28E	588518	3568001*	268	140	128
<a href="#">C 00513</a>	CUB	ED		2	2	2	20	24S	28E	584605	3564020	212	48	164
<a href="#">C 00513 S</a>	CUB	ED		1	3	3	16	24S	28E	584801	3564431	161	42	119
<a href="#">C 00570</a>	CUB	ED		1	1	10		24S	28E	586490	3567195*	100	28	72
<a href="#">C 00573</a>	CUB	ED		2	2	4	04	24S	28E	586188	3568087*	250	35	215
<a href="#">C 00574</a>	CUB	ED		2	4	4	11	24S	28E	589452	3566081*	200	20	180
<a href="#">C 00618</a>	C	ED		3	4	4	12	24S	28E	590880	3565885*	80	40	40
<a href="#">C 00648</a>	C	ED		2	2	2	17	24S	28E	584593	3565644*	96	58	38
<a href="#">C 00684</a>	CUB	ED		2	1	2	13	24S	28E	590682	3565677*	95	40	55
<a href="#">C 00709</a>	C	ED		3	3	3	16	24S	28E	584802	3564232*			
<a href="#">C 00738</a>	CUB	ED		3	1	1	13	24S	28E	589673	3565472*	125	12	113
<a href="#">C 00750</a>	CUB	ED		1	2	4	13	24S	28E	590898	3564871*	110		
<a href="#">C 00764</a>	CUB	ED		3	1	3	10	24S	28E	586399	3566292*	118	25	93
<a href="#">C 00890</a>	CUB	ED		3	3	4	10	24S	28E	587211	3565897*	50		
<a href="#">C 00903</a>	C	ED		2	1	13		24S	28E	590178	3565575*	57	30	27
<a href="#">C 00962</a>	C	ED		3	3	10		24S	28E	586505	3565992*	63	9	54

\*UTM location was derived from PLSS - see Help

(A CLW##### in the  
POD suffix indicates the  
POD has been replaced  
& no longer serves a  
water right file.)

(R=POD has  
been replaced,  
O=orphaned,  
C=the file is  
closed)

(quarters are 1=NW 2=NE 3=SW 4=SE)

(quarters are smallest to largest) (NAD83 UTM in meters)

(In feet)

POD Number	POD Sub-Code	basin	County	Q 64	Q 16	Q 4	Sec	Tws	Rng	X	Y	Depth Well	Depth Water	Water Column
<a href="#">C 00983</a>	C	ED		4	4	4	12	24S	28E	591080	3565885*	92	40	52
<a href="#">C 01082</a>	CUB	ED		3	3	2	11	24S	28E	588832	3566693*	120		
<a href="#">C 01154</a>	C	ED		2	1	2	13	24S	28E	590682	3565677*	95	50	45
<a href="#">C 01237</a>	C	ED		1	1	2	10	24S	28E	587197	3567298*	123		
<a href="#">C 01244</a>	C	ED		4	4	06		24S	28E	582860	3567543*	109	70	39
<a href="#">C 01442</a>	C	ED		1	2	10		24S	28E	587298	3567199*	100		
<a href="#">C 01731</a>	C	ED		4	2	05		24S	28E	584483	3568367*	80	30	50
<a href="#">C 01747</a>	CUB	ED					12	24S	28E	590367	3566577*	176	139	37
<a href="#">C 02057</a>	C	ED		1	4	14		24S	28E	588956	3564774*	126	52	74
<a href="#">C 02184</a>	C	ED		2	4	3	01	24S	28E	590248	3567700*	87	60	27
<a href="#">C 02186</a>	C	ED			2	02		24S	28E	589128	3568606*	100	55	45
<a href="#">C 02198</a>	C	ED			1	01		24S	28E	589940	3568611*	78		
<a href="#">C 02244</a>	C	LE		3	1	2	22	24S	28E	587224	3563865*	260		
<a href="#">C 02306</a>	C	ED		3	2	04		24S	28E	585690	3568382*	75	25	50
<a href="#">C 02524 POD2</a>	C	ED		2	2	2	15	24S	28E	587814	3565690*	90	11	79
<a href="#">C 02836</a>	C	ED		2	2	2	16	24S	28E	586203	3565676*		15	
<a href="#">C 03132</a>	C	ED		1	2	4	15	24S	28E	587616	3564877*	90	19	71
<a href="#">C 03358 POD1</a>	CUB	ED		1	4	1	26	24S	28E	588416	3562116	135		
<a href="#">C 03423</a>	CUB	ED		2	4	1	26	24S	28E	588786	3561952	126		
<a href="#">C 03604 POD1</a>	CUB	ED		2	4	3	10	24S	28E	526534	3565712	38	24	14
<a href="#">C 03703 POD1</a>	C	ED		1	2	1	09	24S	28E	585259	3567225	74	15	59
<a href="#">C 03824 POD1</a>	CUB	ED		4	1	2	16	24S	28E	585770	3565578	290	60	230
<a href="#">C 03833 POD1</a>	C	ED		2	1	2	26	24S	28E	589014	3562545	96	55	41
<a href="#">C 03862 POD1</a>	CUB	ED		3	3	3	01	24S	28E	589672	3567505	17	10	7
<a href="#">C 03862 POD2</a>	CUB	ED		3	3	3	01	24S	28E	589665	3567507	30	10	20
<a href="#">C 03862 POD3</a>	CUB	ED		3	3	3	01	24S	28E	589685	3567500	60	10	50
<a href="#">C 03862 POD4</a>	CUB	ED		3	3	3	01	24S	28E	589705	3567490	30	10	20
<a href="#">C 03862 POD5</a>	CUB	ED		4	3	3	01	24S	28E	589785	3567458	17	10	7
<a href="#">C 03986 POD1</a>	CUB	ED		3	4	2	22	24S	28E	587505	3563502	170	120	50

\*UTM location was derived from PLSS - see Help

(A CLW##### in the  
POD suffix indicates the  
POD has been replaced  
& no longer serves a  
water right file.)

(R=POD has  
been replaced,  
O=orphaned,  
C=the file is  
closed)

(quarters are 1=NW 2=NE 3=SW 4=SE)

(quarters are smallest to largest) (NAD83 UTM in meters)

(In feet)

POD Number	POD Sub- Code	basin	County	Q 6	Q 4	Q 16	Sec	Tws	Rng	X	Y	Depth Well	Depth Water	Water Column
<a href="#">C 03988 POD1</a>	CUB	ED	4	4	4	28	24S	28E	586303	3561087		110	95	15
<a href="#">C 03989 POD1</a>	CUB	ED	4	2	2	33	24S	28E	586342	3560573		100	70	30
<a href="#">C 04025 POD1</a>	CUB	ED	4	3	3	27	24S	28E	586700	3560964		190	90	100
<a href="#">C 04026 POD1</a>	CUB	ED	3	2	1	25	24S	28E	590148	3562290		190	90	100
<a href="#">C 04151 POD1</a>	CUB	ED	4	2	1	26	24S	28E	588584	3562192		280	65	215
<a href="#">C 04180 POD1</a>	CUB	ED	2	1	2	26	24S	28E	589055	3562502		160	58	102
<a href="#">C 04181 POD1</a>	CUB	ED	3	2	1	26	24S	28E	588450	3562146		280	56	224
<a href="#">C 04181 POD2</a>	C	ED	3	2	1	26	24S	28E	588393	3562212		80	56	24
<a href="#">C 04222 POD1</a>	CUB	ED	1	3	3	27	24S	28E	586406	3561228		140	35	105
<a href="#">C 04222 POD2</a>	CUB	ED	1	2	4	22	24S	28E	587707	3563255		100	40	60
<a href="#">C 04263 POD1</a>	CUB	ED	3	1	1	23	24S	28E	588026	3563915		390	370	20
<a href="#">C 04294 POD1</a>	CUB	ED	4	3	3	23	24S	28E	588169	3562646		60		
<a href="#">C 04337 POD1</a>	CUB	ED	4	1	4	03	24S	28E	587317	3567907		60		
<a href="#">C 04382 POD1</a>	CUB	ED	2	1	2	15	24S	28E	587401	3565647		48	35	13
<a href="#">C 04383 POD1</a>	CUB	ED	4	1	2	15	24S	28E	587389	3565499		34	19	15
<a href="#">C 04501 POD1</a>	CUB	ED	3	4	1	29	24S	28E	583580	3561778		80		

Average Depth to Water: **49 feet**

Minimum Depth: **8 feet**

Maximum Depth: **370 feet**

Record Count: 71

PLSS Search:

Township: 24S

Range: 28E

The data is furnished by the NMOSE/ISC and is accepted by the recipient with the expressed understanding that the OSE/ISC make no warranties, expressed or implied, concerning the accuracy, completeness, reliability, usability, or suitability for any particular purpose of the data.

2/1/23 12:50 PM

Page 3 of 3

WATER COLUMN/ AVERAGE  
DEPTH TO WATER





# New Mexico Office of the State Engineer

## Point of Diversion Summary

(quarters are 1=NW 2=NE 3=SW 4=SE)

(quarters are smallest to largest)

(NAD83 UTM in meters)

Well Tag	POD Number	Q64	Q16	Q4	Sec	Tws	Rng	X	Y
NA	C 00513	2	2	2	20	24S	28E	584605	3564020

x

**Driller License:****Driller Company:****Driller Name:** HOWARD HEMLER**Drill Start Date:** 03/30/1954**Drill Finish Date:** 03/30/1954**Plug Date:****Log File Date:** 06/24/1954**PCW Rev Date:** 09/22/1954**Source:** Shallow**Pump Type:** TURBIN**Pipe Discharge Size:****Estimated Yield:** 900 GPM**Casing Size:** 14.00**Depth Well:** 212 feet**Depth Water:** 48 feet

x

**Water Bearing Stratifications:****Top Bottom Description**

84 135 Limestone/Dolomite/Chalk

178 212 Limestone/Dolomite/Chalk

x

**Casing Perforations:****Top Bottom**

80 140

180 212

x

**Meter Number:** 560**Meter Make:** WATER SPEC**Meter Serial Number:** 934685**Meter Multiplier:** 1.0000**Number of Dials:** 3**Meter Type:** Diversion**Unit of Measure:** Acre-Feet**Return Flow Percent:****Usage Multiplier:****Reading Frequency:**

x

**Meter Readings (in Acre-Feet)**

Read Date	Year	Mtr Reading	Flag	Rdr	Comment	Mtr Amount Online
12/29/1998	1999	0	A	ms		0
04/01/1999	1999	0	A	ms		0
06/15/1999	1999	0	A	ms		0
09/29/1999	1999	0	A	ms		0
04/06/2000	2000	0	A	mb		0
07/07/2000	2000	0	A	mb		0
10/19/2000	2000	0	A	mb		0
01/05/2001	2000	0	A	ms		0
04/20/2001	2001	0	A	ms		0
07/20/2001	2001	0	A	ms	No Electric	0
04/01/2003	2002	6	A	MB		6.293
06/03/2003	2003	6	A	ms		0
08/20/2003	2003	6	A	ab		0
10/22/2003	2003	8	A	TW		1.374
01/06/2004	2003	8	A	ab		0
04/28/2004	2004	12	A	TW		4.051
07/14/2004	2004	12	A	ms		0
10/20/2004	2004	12	A	TW		0

01/03/2005	2004	12	A	TW	0
03/30/2005	2005	12	A	JW	0
07/06/2005	2005	12	A	JW	0
01/05/2006	2005	12	A	TW	0
04/05/2006	2006	12	A	tw	0.353
07/06/2006	2006	14	A	tw	2.000
01/04/2007	2006	15	A	tw	1.073
04/27/2007	2007	15	A	tw	0
07/03/2007	2007	15	A	tw	0
10/10/2007	2007	15	A	tw	0
01/02/2008	2007	15	A	tw	0
04/15/2008	2008	15	A	tw	0
10/02/2008	2008	15	A	tw	0
01/13/2009	2008	15	A	tw	0
04/15/2009	2009	15	A	tw	0
06/07/2009	2009	15	A	tw	0
01/06/2010	2009	15	A	tw	0
05/13/2010	2010	15	A	tw	0
01/12/2011	2010	15	A	tw	0
09/20/2011	2011	15	A	tw	0
01/23/2012	2011	15	A	tw	0
03/02/2012	2012	15	A	tw	0
07/02/2012	2012	15	A	tw	0
10/19/2012	2012	15	A	tw	0
02/12/2013	2013	15	A	tw	0
11/05/2013	2013	15	A	tw	0
06/10/2014	2014	15	A	tw	0
01/27/2015	2014	15	A	tw	0
03/04/2016	2016	15	A	tw	0
Pump pulled PVACD purchased					0

x

**YTD Meter Amounts:	Year	Amount
	1999	0
	2000	0
	2001	0
	2002	6.293
	2003	1.374
	2004	4.051
	2005	0
	2006	3.426
	2007	0
	2008	0
	2009	0
	2010	0
	2011	0
	2012	0
	2013	0
	2014	0
	2016	0

x

Meter Number:

564

Meter Make:

WATER SPEC

**Meter Serial Number:** 924685  
**Number of Dials:** 4  
**Unit of Measure:** Acre-Feet  
**Usage Multiplier:**

**Meter Multiplier:** 1.0000  
**Meter Type:** Diversion  
**Return Flow Percent:**  
**Reading Frequency:**

x  
**Meter Readings (in Acre-Feet)**

Read Date	Year	Mtr Reading	Flag	Rdr	Comment	Mtr Amount Online
12/29/1998	1999	0	A	ms		0
04/01/1999	1999	0	A	ms		0
06/15/1999	1999	0	A	ms		0
09/29/1999	1999	0	A	ms		0
04/06/2000	2000	0	A	MB		0
07/07/2000	2000	0	A	MB		0
10/19/2000	2000	0	A	MB		0
01/03/2001	2000	0	A	ms		0

x  
**\*\*YTD Meter Amounts:**

Year	Amount
1999	0
2000	0

x  
**Meter Number:** 1408  
**Meter Serial Number:** 62 074 251  
**Number of Dials:** 5  
**Unit of Measure:** Kilowatt Hours  
**Usage Multiplier:**

**Meter Make:**  
**Meter Multiplier:** 1.0000  
**Meter Type:** Power Child  
**Return Flow Percent:**  
**Reading Frequency:**

x  
**Meter Readings in (Kilowatt Hours)**

Read Date	Year	Mtr Reading	Flag	Rdr	Comment	Mtr Amount Online
04/06/2000	2000	30830	A	mb		0
07/07/2000	2000	30830	A	mb		0

x  
**\*\*YTD Meter Amounts:**

Year	Amount
2000	0

The data is furnished by the NMOSE/ISC and is accepted by the recipient with the expressed understanding that the OSE/ISC make no warranties, expressed or implied, concerning the accuracy, completeness, reliability, usability, or suitability for any particular purpose of the data.

2/1/23 12:52 PM

POINT OF DIVERSION SUMMARY

National Water Information System: Web Interface


USGS Water Resources

Data Category:  
Groundwater

Geographic Area:  
New Mexico

GO

Click to hideNews Bulletins

- Explore the NEW [USGS National Water Dashboard](#) interactive map to access real-time water data from over 13,500 stations nationwide.
- [Full News](#) 

Groundwater levels for New Mexico

Click to hide state-specific text

 Important: [Next Generation Monitoring Location Page](#)

Search Results -- 1 sites found

Agency code = usgs  
site\_no list =

- 321232104055301

Minimum number of levels = 1  
[Save file of selected sites](#) to local disk for future upload

USGS 321232104055301 24S.28E.20.22244

Eddy County, New Mexico  
Latitude 32°12'32", Longitude 104°05'53" NAD27  
Land-surface elevation 3,039 feet above NAVD88  
The depth of the well is 212 feet below land surface.  
This well is completed in the Other aquifers (N9999OTHER) national aquifer.  
This well is completed in the Alluvium, Bolson Deposits and Other Surface Deposits (110AVMB) local aquifer.

Output formats

[Table of data](#)

[Tab-separated data](#)

[Graph of data](#)

[Reselect period](#)

Date	Time	? Water-level date-time accuracy	? Parameter code	Water level, feet below land surface	Water level, feet above specific vertical datum	Referenced vertical datum	? Status	? Method of measurement	? Measuring agency	? Source measu
1954-09-20			D62610		2983.41	NGVD29	1		Z	
1954-09-20			D62611		2985.00	NAVD88	1		Z	
1954-09-20			D72019	54.00			1		Z	
1955-07-13			D62610		2998.43	NGVD29	1		Z	
1955-07-13			D62611		3000.02	NAVD88	1		Z	
1955-07-13			D72019	38.98			1		Z	

Explanation

Section	Code	Description
Water-level date-time accuracy	D	Date is accurate to the Day
Parameter code	62610	Groundwater level above NGVD 1929, feet
Parameter code	62611	Groundwater level above NAVD 1988, feet
Parameter code	72019	Depth to water level, feet below land surface



Section	Code	Description
Referenced vertical datum	NAVD88	North American Vertical Datum of 1988
Referenced vertical datum	NGVD29	National Geodetic Vertical Datum of 1929
Status	1	Static
Method of measurement	Z	Other.
Measuring agency		Not determined
Source of measurement		Not determined
Water-level approval status	A	Approved for publication -- Processing and review completed.

[Questions about sites/data?](#)  
[Feedback on this web site](#)  
[Automated retrievals](#)  
[Help](#)  
[Data Tips](#)  
[Explanation of terms](#)  
[Subscribe for system changes](#)  
[News](#)

[Accessibility](#)   [FOIA](#)   [Privacy](#)   [Policies and Notices](#)  
[U.S. Department of the Interior](#) | [U.S. Geological Survey](#)  
**Title: Groundwater for New Mexico: Water Levels**  
**URL: <https://nwis.waterdata.usgs.gov/nm/nwis/gwlevels?>**



Page Contact Information: [New Mexico Water Data Maintainer](#)  
Page Last Modified: 2023-02-01 15:01:49 EST  
0.28   0.25 nadww02



USGS Home  
Contact USGS  
Search USGS

National Water Information System: Web Interface


USGS Water Resources

Data Category:  
Groundwater

Geographic Area:  
New Mexico

GO

Click to hideNews Bulletins

- Explore the NEW [USGS National Water Dashboard](#) interactive map to access real-time water data from over 13,500 stations nationwide.
- [Full News](#) 

Groundwater levels for New Mexico

Click to hide state-specific text

 Important: [Next Generation Monitoring Location Page](#)

Search Results -- 1 sites found

Agency code = usgs  
site\_no list =

- 321110104071701

Minimum number of levels = 1  
[Save file of selected sites](#) to local disk for future upload

USGS 321110104071701 24S.28E.30.413242

Eddy County, New Mexico  
Latitude 32°11'10", Longitude 104°07'17" NAD27  
Land-surface elevation 3,055 feet above NAVD88  
The depth of the well is 201 feet below land surface.  
This well is completed in the Other aquifers (N9999OTHER) national aquifer.  
This well is completed in the Castile Formation (312CSTL) local aquifer.

Output formats

<a href="#">Table of data</a>
<a href="#">Tab-separated data</a>
<a href="#">Graph of data</a>
<a href="#">Reselect period</a>

Date	Time	? Water-level date-time accuracy	? Parameter code	Water level, feet below land surface	Water level, feet above specific vertical datum	Referenced vertical datum	? Status	? Method of measurement	? Measuring agency	? Source measu
1983-01-31			D	62610	2989.68	NGVD29	1		Z	
1983-01-31			D	62611	2991.29	NAVD88	1		Z	
1983-01-31			D	72019	63.71		1		Z	
1988-02-10			D	62610	2991.52	NGVD29	1		Z	
1988-02-10			D	62611	2993.13	NAVD88	1		Z	
1988-02-10			D	72019	61.87		1		Z	
1992-11-04			D	62610	2990.33	NGVD29	1		S	
1992-11-04			D	62611	2991.94	NAVD88	1		S	
1992-11-04			D	72019	63.06		1		S	
1998-01-23			D	62610	2988.93	NGVD29	1		S	
1998-01-23			D	62611	2990.54	NAVD88	1		S	
1998-01-23			D	72019	64.46		1		S	

Explanation		
Section	Code	Description
Water-level date-time accuracy	D	Date is accurate to the Day
Parameter code	62610	Groundwater level above NGVD 1929, feet
Parameter code	62611	Groundwater level above NAVD 1988, feet
Parameter code	72019	Depth to water level, feet below land surface
Referenced vertical datum	NAVD88	North American Vertical Datum of 1988
Referenced vertical datum	NGVD29	National Geodetic Vertical Datum of 1929
Status	1	Static
Method of measurement	S	Steel-tape measurement.
Method of measurement	Z	Other.
Measuring agency		Not determined
Source of measurement		Not determined
Water-level approval status	A	Approved for publication -- Processing and review completed.

[Questions about sites/data?](#)  
[Feedback on this web site](#)  
[Automated retrievals](#)  
[Help](#)  
[Data Tips](#)  
[Explanation of terms](#)  
[Subscribe for system changes](#)  
[News](#)

[Accessibility](#)   [FOIA](#)   [Privacy](#)   [Policies and Notices](#)  
[U.S. Department of the Interior](#) | [U.S. Geological Survey](#)  
**Title: Groundwater for New Mexico: Water Levels**  
**URL: <https://nwis.waterdata.usgs.gov/nm/nwis/gwlevels?>**



Page Contact Information: [New Mexico Water Data Maintainer](#)  
Page Last Modified: 2023-02-01 15:22:28 EST  
0.27 0.23 nadww02



# New Mexico Office of the State Engineer

## Point of Diversion Summary

		(quarters are 1=NW 2=NE 3=SW 4=SE) (quarters are smallest to largest)						(NAD83 UTM in meters)	
Well Tag	POD Number	Q64	Q16	Q4	Sec	Tw	Rng	X	Y
NA	C 03988 POD1	4	4	4	28	24S	28E	586303	3561087
x									
Driller License:	1690	Driller Company:		VISION RESOURCES, INC					
Driller Name:	MALEY, JASON								
Drill Start Date:	12/05/2016	Drill Finish Date:		12/20/2016		Plug Date:			
Log File Date:	12/20/2016	PCW Rcv Date:						Source:	Shallow
Pump Type:		Pipe Discharge Size:						Estimated Yield:	
Casing Size:	8.00	Depth Well:		110 feet		Depth Water:		95 feet	
x									
Water Bearing Stratifications:					Top	Bottom	Description		
					95	110	Sandstone/Gravel/Conglomerate		
x									
Casing Perforations:					Top	Bottom			
					90	110			

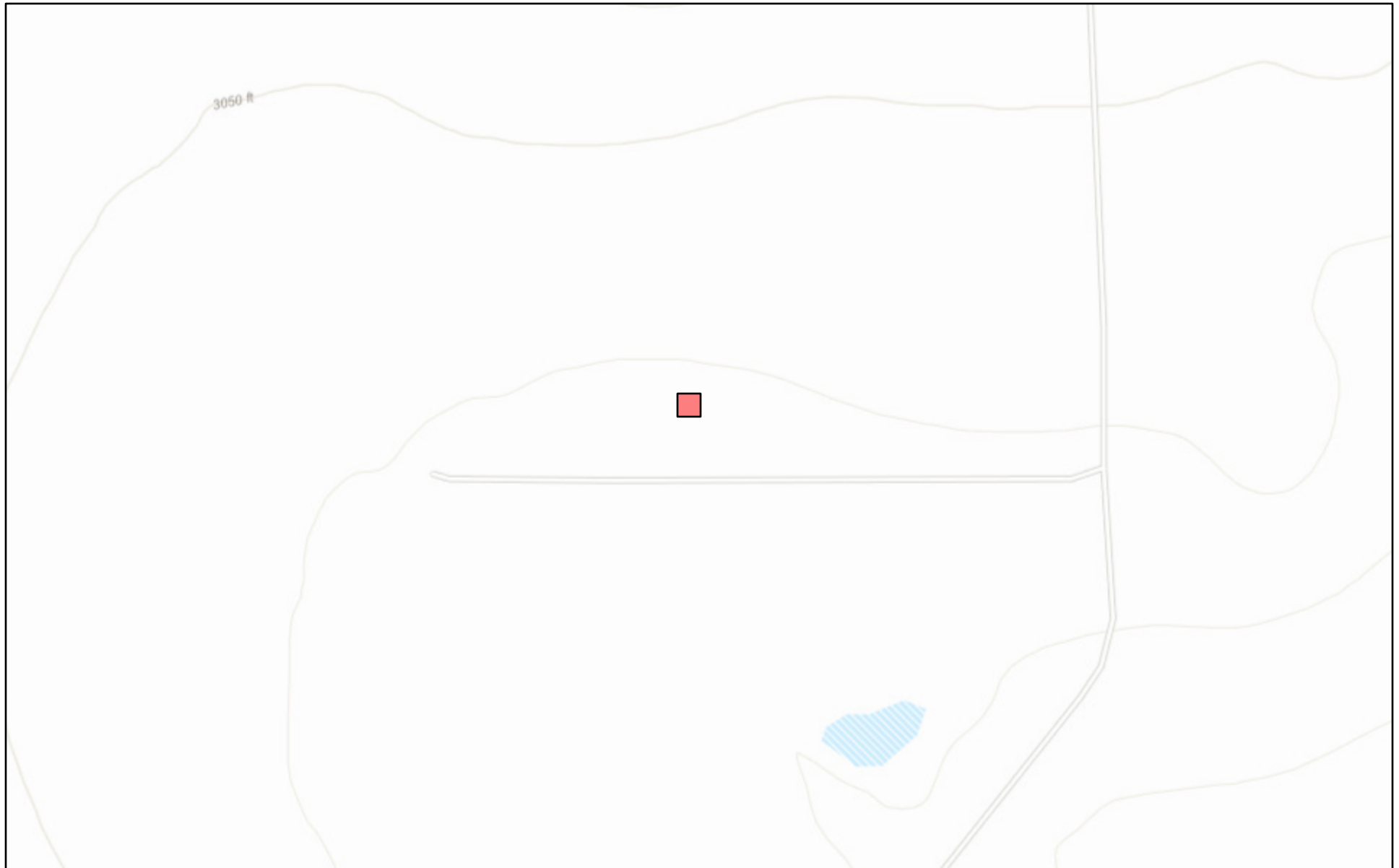
The data is furnished by the NMOSE/ISC and is accepted by the recipient with the expressed understanding that the OSE/ISC make no warranties, expressed or implied, concerning the accuracy, completeness, reliability, usability, or suitability for any particular purpose of the data.

2/1/23 12:55 PM

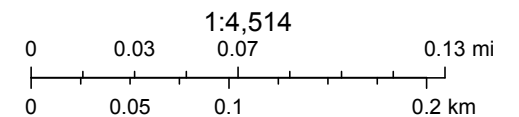
POINT OF DIVERSION SUMMARY



# New Mexico NFHL Data



February 1, 2023



FEMA, Sources: Esri, HERE, Garmin, Intermap, increment P Corp., GEBCO, USGS, FAO, NPS, NRCAN, GeoBase, IGN, Kadaster NL, Ordnance Survey,

nmflood.org is made possible through a collaboration with NMDHSEM,

This is a non-regulatory product for informational use only. Please consult your local floodplain administrator for further information.

Sante Fe Main Office  
Phone: (505) 476-3441

General Information  
Phone: (505) 629-6116

Online Phone Directory  
<https://www.emnrd.nm.gov/ocd/contact-us>

State of New Mexico  
Energy, Minerals and Natural Resources  
Oil Conservation Division  
1220 S. St Francis Dr.  
Santa Fe, NM 87505

QUESTIONS

Action 502142

QUESTIONS

Operator: COG OPERATING LLC 600 W Illinois Ave Midland, TX 79701	OGRID: 229137
	Action Number: 502142
	Action Type: [C-141] Remediation Closure Request C-141 (C-141-v-Closure)

QUESTIONS

Prerequisites	
Incident ID (n#)	nAPP2436328681
Incident Name	NAPP2436328681 TOMAHAWK FEDERAL 20 O CTB @ FAPP2203451054
Incident Type	Produced Water Release
Incident Status	Remediation Closure Report Received
Incident Facility	[fAPP2203451054] TOMAHAWK FED 20-O CTB SAT

Location of Release Source	
Please answer all the questions in this group.	
Site Name	Tomahawk Federal 20 O CTB
Date Release Discovered	12/27/2024
Surface Owner	Private

Incident Details	
Please answer all the questions in this group.	
Incident Type	Produced Water Release
Did this release result in a fire or is the result of a fire	No
Did this release result in any injuries	No
Has this release reached or does it have a reasonable probability of reaching a watercourse	No
Has this release endangered or does it have a reasonable probability of endangering public health	No
Has this release substantially damaged or will it substantially damage property or the environment	No
Is this release of a volume that is or may with reasonable probability be detrimental to fresh water	No

Nature and Volume of Release	
Material(s) released, please answer all that apply below. Any calculations or specific justifications for the volumes provided should be attached to the follow-up C-141 submission.	
Crude Oil Released (bbls) Details	Not answered.
Produced Water Released (bbls) Details	Cause: Other   Pump   Produced Water   Released: 220 BBL (Unknown Released Amount)   Recovered: 220 BBL   Lost: 0 BBL.
Is the concentration of chloride in the produced water >10,000 mg/l	Yes
Condensate Released (bbls) Details	Not answered.
Natural Gas Vented (Mcf) Details	Not answered.
Natural Gas Flared (Mcf) Details	Not answered.
Other Released Details	Not answered.
Are there additional details for the questions above (i.e. any answer containing Other, Specify, Unknown, and/or Fire, or any negative lost amounts)	Not answered.

Sante Fe Main Office  
Phone: (505) 476-3441

General Information  
Phone: (505) 629-6116

Online Phone Directory  
<https://www.emnrd.nm.gov/ocd/contact-us>

**State of New Mexico**  
**Energy, Minerals and Natural Resources**  
**Oil Conservation Division**  
**1220 S. St Francis Dr.**  
**Santa Fe, NM 87505**

QUESTIONS, Page 2

Action 502142

**QUESTIONS (continued)**

Operator: COG OPERATING LLC 600 W Illinois Ave Midland, TX 79701	OGRID: 229137
	Action Number: 502142
	Action Type: [C-141] Remediation Closure Request C-141 (C-141-v-Closure)

**QUESTIONS**

<b>Nature and Volume of Release (continued)</b>	
Is this a gas only submission (i.e. only significant Mcf values reported)	No, according to supplied volumes this does not appear to be a "gas only" report.
Was this a major release as defined by Subsection A of 19.15.29.7 NMAC	Yes
Reasons why this would be considered a submission for a notification of a major release	From paragraph A. "Major release" determine using: (1) an unauthorized release of a volume, excluding gases, of 25 barrels or more.
With the implementation of the 19.15.27 NMAC (05/25/2021), venting and/or flaring of natural gas (i.e. gas only) are to be submitted on the C-129 form.	

**Initial Response**

The responsible party must undertake the following actions immediately unless they could create a safety hazard that would result in injury.

The source of the release has been stopped	True
The impacted area has been secured to protect human health and the environment	True
Released materials have been contained via the use of berms or dikes, absorbent pads, or other containment devices	True
All free liquids and recoverable materials have been removed and managed appropriately	True
If all the actions described above have not been undertaken, explain why	Not answered.

Per Paragraph (4) of Subsection B of 19.15.29.8 NMAC the responsible party may commence remediation immediately after discovery of a release. If remediation has begun, please prepare and attach a narrative of actions to date in the follow-up C-141 submission. If remedial efforts have been successfully completed or if the release occurred within a lined containment area (see Subparagraph (a) of Paragraph (5) of Subsection A of 19.15.29.11 NMAC), please prepare and attach all information needed for closure evaluation in the follow-up C-141 submission.

I hereby certify that the information given above is true and complete to the best of my knowledge and understand that pursuant to OCD rules and regulations all operators are required to report and/or file certain release notifications and perform corrective actions for releases which may endanger public health or the environment. The acceptance of a C-141 report by the OCD does not relieve the operator of liability should their operations have failed to adequately investigate and remediate contamination that pose a threat to groundwater, surface water, human health or the environment. In addition, OCD acceptance of a C-141 report does not relieve the operator of responsibility for compliance with any other federal, state, or local laws and/or regulations.

I hereby agree and sign off to the above statement	Name: Brittany Esparza Title: Environmental Technician Email: brittany.Esparza@ConocoPhillips.com Date: 01/13/2025
--	---

Sante Fe Main Office  
Phone: (505) 476-3441

General Information  
Phone: (505) 629-6116

Online Phone Directory  
<https://www.emnrd.nm.gov/ocd/contact-us>

**State of New Mexico**  
**Energy, Minerals and Natural Resources**  
**Oil Conservation Division**  
**1220 S. St Francis Dr.**  
**Santa Fe, NM 87505**

QUESTIONS, Page 3

Action 502142

**QUESTIONS (continued)**

Operator: COG OPERATING LLC 600 W Illinois Ave Midland, TX 79701	OGRID: 229137
	Action Number: 502142
	Action Type: [C-141] Remediation Closure Request C-141 (C-141-v-Closure)

**QUESTIONS**

<b>Site Characterization</b>	
<i>Please answer all the questions in this group (only required when seeking remediation plan approval and beyond). This information must be provided to the appropriate district office no later than 90 days after the release discovery date.</i>	
What is the shallowest depth to groundwater beneath the area affected by the release in feet below ground surface (ft bgs)	Between 26 and 50 (ft.)
What method was used to determine the depth to ground water	NM OSE iWaters Database Search
Did this release impact groundwater or surface water	No
<b>What is the minimum distance, between the closest lateral extents of the release and the following surface areas:</b>	
A continuously flowing watercourse or any other significant watercourse	Between 1000 (ft.) and ½ (mi.)
Any lakebed, sinkhole, or playa lake (measured from the ordinary high-water mark)	Between 1000 (ft.) and ½ (mi.)
An occupied permanent residence, school, hospital, institution, or church	Greater than 5 (mi.)
A spring or a private domestic fresh water well used by less than five households for domestic or stock watering purposes	Greater than 5 (mi.)
Any other fresh water well or spring	Greater than 5 (mi.)
Incorporated municipal boundaries or a defined municipal fresh water well field	Greater than 5 (mi.)
A wetland	Between 1000 (ft.) and ½ (mi.)
A subsurface mine	Greater than 5 (mi.)
An (non-karst) unstable area	Between 1000 (ft.) and ½ (mi.)
Categorize the risk of this well / site being in a karst geology	Medium
A 100-year floodplain	Greater than 5 (mi.)
Did the release impact areas not on an exploration, development, production, or storage site	No

<b>Remediation Plan</b>	
<i>Please answer all the questions that apply or are indicated. This information must be provided to the appropriate district office no later than 90 days after the release discovery date.</i>	
Requesting a remediation plan approval with this submission	Yes
<i>Attach a comprehensive report demonstrating the lateral and vertical extents of soil contamination associated with the release have been determined, pursuant to 19.15.29.11 NMAC and 19.15.29.13 NMAC.</i>	
Have the lateral and vertical extents of contamination been fully delineated	Yes
Was this release entirely contained within a lined containment area	Yes
<i>Per Subsection B of 19.15.29.11 NMAC unless the site characterization report includes completed efforts at remediation, the report must include a proposed remediation plan in accordance with 19.15.29.12 NMAC, which includes the anticipated timelines for beginning and completing the remediation.</i>	
On what estimated date will the remediation commence	07/14/2025
On what date will (or did) the final sampling or liner inspection occur	07/14/2025
On what date will (or was) the remediation complete(d)	07/14/2025
What is the estimated surface area (in square feet) that will be remediated	150
What is the estimated volume (in cubic yards) that will be remediated	0
<i>These estimated dates and measurements are recognized to be the best guess or calculation at the time of submission and may (be) change(d) over time as more remediation efforts are completed.</i>	
<i>The OCD recognizes that proposed remediation measures may have to be minimally adjusted in accordance with the physical realities encountered during remediation. If the responsible party has any need to significantly deviate from the remediation plan proposed, then it should consult with the division to determine if another remediation plan submission is required.</i>	



Sante Fe Main Office  
Phone: (505) 476-3441

General Information  
Phone: (505) 629-6116

Online Phone Directory  
<https://www.emnrd.nm.gov/ocd/contact-us>

**State of New Mexico**  
**Energy, Minerals and Natural Resources**  
**Oil Conservation Division**  
**1220 S. St Francis Dr.**  
**Santa Fe, NM 87505**

QUESTIONS, Page 4

Action 502142

**QUESTIONS (continued)**

Operator: COG OPERATING LLC 600 W Illinois Ave Midland, TX 79701	OGRID: 229137
	Action Number: 502142
	Action Type: [C-141] Remediation Closure Request C-141 (C-141-v-Closure)

**QUESTIONS**

<b>Remediation Plan (continued)</b>	
<i>Please answer all the questions that apply or are indicated. This information must be provided to the appropriate district office no later than 90 days after the release discovery date.</i>	
<b>This remediation will (or is expected to) utilize the following processes to remediate / reduce contaminants:</b>	
(Select all answers below that apply.)	
Is (or was) there affected material present needing to be removed	Yes
Is (or was) there a power wash of the lined containment area (to be) performed	Yes
OTHER (Non-listed remedial process)	Not answered.
<i>Per Subsection B of 19.15.29.11 NMAC unless the site characterization report includes completed efforts at remediation, the report must include a proposed remediation plan in accordance with 19.15.29.12 NMAC, which includes the anticipated timelines for beginning and completing the remediation.</i>	
I hereby certify that the information given above is true and complete to the best of my knowledge and understand that pursuant to OCD rules and regulations all operators are required to report and/or file certain release notifications and perform corrective actions for releases which may endanger public health or the environment. The acceptance of a C-141 report by the OCD does not relieve the operator of liability should their operations have failed to adequately investigate and remediate contamination that pose a threat to groundwater, surface water, human health or the environment. In addition, OCD acceptance of a C-141 report does not relieve the operator of responsibility for compliance with any other federal, state, or local laws and/or regulations.	
I hereby agree and sign off to the above statement	Name: Brittany Esparza Title: Environmental Technician Email: <a href="mailto:brittany.Esparza@ConocoPhillips.com">brittany.Esparza@ConocoPhillips.com</a> Date: 09/03/2025
<i>The OCD recognizes that proposed remediation measures may have to be minimally adjusted in accordance with the physical realities encountered during remediation. If the responsible party has any need to significantly deviate from the remediation plan proposed, then it should consult with the division to determine if another remediation plan submission is required.</i>	

Sante Fe Main Office  
Phone: (505) 476-3441

General Information  
Phone: (505) 629-6116

Online Phone Directory  
<https://www.emnrd.nm.gov/oecd/contact-us>

**State of New Mexico**  
**Energy, Minerals and Natural Resources**  
**Oil Conservation Division**  
**1220 S. St Francis Dr.**  
**Santa Fe, NM 87505**

QUESTIONS, Page 6

Action 502142

**QUESTIONS (continued)**

Operator: COG OPERATING LLC 600 W Illinois Ave Midland, TX 79701	OGRID: 229137
	Action Number: 502142
	Action Type: [C-141] Remediation Closure Request C-141 (C-141-v-Closure)

**QUESTIONS**

Liner Inspection Information	
Last liner inspection notification (C-141L) recorded	483842
Liner inspection date pursuant to Subparagraph (a) of Paragraph (5) of Subsection A of 19.15.29.11 NMAC	07/14/2025
Was all the impacted materials removed from the liner	Yes
What was the liner inspection surface area in square feet	150

Remediation Closure Request	
<i>Only answer the questions in this group if seeking remediation closure for this release because all remediation steps have been completed.</i>	
Requesting a remediation closure approval with this submission	Yes
Have the lateral and vertical extents of contamination been fully delineated	Yes
Was this release entirely contained within a lined containment area	Yes
What was the total surface area (in square feet) remediated	150
What was the total volume (cubic yards) remediated	0
Summarize any additional remediation activities not included by answers (above)	NA
<i>The responsible party must attach information demonstrating they have complied with all applicable closure requirements and any conditions or directives of the OCD. This demonstration should be in the form of a comprehensive report (in .pdf format) including a scaled site map, sampling diagrams, relevant field notes, photographs of any excavation prior to backfilling, laboratory data including chain of custody documents of final sampling, and a narrative of the remedial activities. Refer to 19.15.29.12 NMAC.</i>	
I hereby certify that the information given above is true and complete to the best of my knowledge and understand that pursuant to OCD rules and regulations all operators are required to report and/or file certain release notifications and perform corrective actions for releases which may endanger public health or the environment. The acceptance of a C-141 report by the OCD does not relieve the operator of liability should their operations have failed to adequately investigate and remediate contamination that pose a threat to groundwater, surface water, human health or the environment. In addition, OCD acceptance of a C-141 report does not relieve the operator of responsibility for compliance with any other federal, state, or local laws and/or regulations. The responsible party acknowledges they must substantially restore, reclaim, and re-vegetate the impacted surface area to the conditions that existed prior to the release or their final land use in accordance with 19.15.29.13 NMAC including notification to the OCD when reclamation and re-vegetation are complete.	
I hereby agree and sign off to the above statement	Name: Brittany Esparza Title: Environmental Technician Email: <a href="mailto:brittany.Esparza@ConocoPhillips.com">brittany.Esparza@ConocoPhillips.com</a> Date: 09/03/2025

Sante Fe Main Office  
Phone: (505) 476-3441

General Information  
Phone: (505) 629-6116

Online Phone Directory  
<https://www.emnrd.nm.gov/ocd/contact-us>

State of New Mexico  
Energy, Minerals and Natural Resources  
Oil Conservation Division  
1220 S. St Francis Dr.  
Santa Fe, NM 87505

CONDITIONS

Action 502142

CONDITIONS

Operator: COG OPERATING LLC 600 W Illinois Ave Midland, TX 79701	OGRID: 229137
	Action Number: 502142
	Action Type: [C-141] Remediation Closure Request C-141 (C-141-v-Closure)

CONDITIONS

Created By	Condition	Condition Date
nvelez	Liner inspection approved, release resolved. Restoration complete.	9/15/2025