



August 21, 2025

District Supervisor
Oil Conservation Division, District 1
1625 North French Drive
Hobbs, New Mexico 88240

**Re: Remediation Report and Closure Request
Maverick Permian LLC
State F 1 #026 Flowline Release
Unit Letter L, Section 01, Township 21 South, Range 36 East
Lea County, New Mexico
NMOCD Incident ID# nAPP2333256523**

Dear Sir or Madam,

Tetra Tech, Inc. (Tetra Tech) was contracted by Maverick Permian LLC (Maverick) to assist with the management of a produced water release associated with the State F 1 #026 flowline release, Unit Letter L, Section 01, Township 21 South, Range 36 East, in Lea County, New Mexico, at coordinates 32.507815°, -103.225096° (Site). The Site location and topographic map are shown in **Figure 1**, and the Release extents map is shown in **Figure 2**.

BACKGROUND

On November 25, 2023, Maverick identified a ruptured flowline associated with the State F 1 #026 well (30-025-39357) well which released approximately 15 bbls of produced water in the surrounding pasture. Upon arrival, vacuum recovery trucks were unable to recover any fluids.

SITE CHARACTERIZATION

Receptors

Tetra Tech performed a site characterization for the release location. It did not identify any watercourses, sinkholes, playas, residences, schools, hospitals, institutions, churches, springs, private domestic water wells, wetlands, incorporated municipal boundaries, subsurface mines, or floodplains within the distances specified in 19.15.29.11 New Mexico Administrative Code (NMAC). Based on a review of the NMOCD Mapper, the site is in an area of low karst potential. The site characterization data is included in **Attachment 1**.

Depth to Groundwater

A search of the New Mexico Office of the State Engineer (NMOSE) and United States Geologic Survey (USGS) groundwater databases was completed to determine the proximity of known water sources within a half-mile radius of the Site. No approximate groundwater depth was determined in the area using published water well data at the time of the release.

On May 14, 2025, H&R Enterprises, LLC, advanced a depth-to-water boring to 105 feet below ground surface (bgs), approximately 0.44 miles south of the Site under CP-02064 POD1. No groundwater was encountered during the advancement of the boring and the dry hole was subsequently plugged with drill cuttings and hydrated bentonite chips.

Tetra Tech, Inc.

1500 CityWest Boulevard, Suite 1000, Houston, Texas 77042
Tel +1.832.251.5160 | tetrattech.com/oga | tetrattech.com

Remediation Report and Closure Request
State F 1 #026
Incident ID# nAPP2333256523

Maverick Permian LLC
August 21 2025

Wetlands

Readily available data were reviewed to determine the status of the Site regarding wetland designation or potential wetland existence. The U.S. Fish and Wildlife Service (USFWS) National Wetlands Inventory (NWI) Wetlands Interactive Mapper and the New Mexico OpenEnviroMap were queried to determine if any potential wetlands are mapped near the remediation location. Based on the NWI and OpenEnviroMap review, the Site is not identified as having a mapped wetland within 300 feet of the Site.

Soils

According to the United States Department of Agriculture (USDA) Natural Resources Conservation Service (NRCS), the Site is mapped as having Pyote and Maljamar Fine Sands, which is classified as a sand soil type.

Cultural Resources Survey

The release site lies within 100 feet of an active lease road and at the intersection of a north-south running and east-west running flowlines and pipelines that have historically been heavily disturbed previously. As the remediation area was constrained to the active lease road and previously disturbed areas, no additional archaeological survey work was performed as part of the remedial activity described below. No subsurface cultural materials were encountered during remediation.

Biologically Sensitive Areas

Readily available data were reviewed to determine if the Site lies within biologically sensitive areas. The U.S. Fish and Wildlife Services (USFWS) Information for Planning and Consultation (IPaC) and the New Mexico Department of Game and Fish (NMDGF) Environmental Review Tool (ERT) were queried to determine if sensitive wildlife or plant areas are present at the Site. The Site is not identified within biologically sensitive areas where remediation would impact sensitive wildlife or plant habitats.

REGULATORY FRAMEWORK

Based upon the release footprint location and in accordance with Subsection E of 19.15.29.12 NMAC, per 19.15.29.11 NMAC, the site characterization data were used to determine recommended remedial action levels (RRALs) for benzene, toluene, ethylbenzene, and xylene (collectively referred to as BTEX), total petroleum hydrocarbons (TPH), and chloride in soil.

Based on the site characterization, established depth to groundwater, and in accordance with Table 1 of 19.15.29.12 NMAC, the remediation RRALs for the Site are as follows:

Closure Criteria for Soils Impacted by a Release

Constituent	Remediation RRAL
Chloride	20,000 mg/kg
TPH (GRO+DRO+ORO)	2,500 mg/kg
TPH (DRO+ORO)	1,000 mg/kg
BTEX	50 mg/kg
Benzene	10 mg/kg

Remediation Report and Closure Request
State F 1 #026
Incident ID# nAPP2333256523

Maverick Permian LLC
August 21 2025

Additionally, in accordance with the New Mexico Oil Conservation District (NMOCD) guidance *Procedures for Implementation of the Spill Rule (19.15.29 NMAC)* (September 6, 2019), the following reclamation requirements for surface soils (0-4 feet bgs) are as follows:

Reclamation Requirements

Constituent	Remediation RRAL
Chloride	600 mg/kg
TPH (GRO+DRO+ORO)	100 mg/kg
BTEX	50 mg/kg
Benzene	10 mg/kg

REMEDICATION AND CONFIRMATION SAMPLING

Excavation activities commenced on June 4, 2025, and concluded on June 23, 2025. Maverick's subcontractor, McNabb Partners (McNabb), used heavy equipment to excavate impacted soil from the remediation area to a maximum depth of four (4) feet bgs as shown in **Figure 2**. Within the remediation area, to avoid potential contact by heavy equipment with pressurized lines, heavy equipment was maintained at least 2 feet away from pressurized lines where hydro-excavation and hand-digging were employed.

McNabb excavated 1,160 cubic yards of contaminated soil from a 5,200-square-foot area and transported it to R360 Halfway Disposal and Landfill for off-site disposal. Photographs of the final excavation are provided in **Attachment 2**.

Confirmation Sampling Notification

On June 5, 2025, Tetra Tech began notifications to the NMOCD of confirmation sampling through the submission of a C-141N Sampling Notification in the NMOCD Permitting portal for confirmation sampling. Sampling notification was conducted in accordance with 19.15.29.12(D)(1)(a) NMAC and the Energy, Minerals and Natural Resources Department (EMNRD) *Notice Process Updates re: Submissions of Form C-141 Release Notification and Corrective Actions* dated December 1, 2023.

Confirmation Sampling

Upon reaching the excavation's final lateral and vertical excavation extents, Tetra Tech collected 34 final confirmation samples, including 27 five-point composite floor samples and 7 five-point composite side wall samples from the excavated areas. The remediation excavation concluded as shown in **Figure 3** with a total area of 5,200 square feet and a sampling density of approximately one confirmation sample per 193 square feet.

Samples were submitted to Cardinal Laboratory in Hobbs, New Mexico, to analyze BTEX by Method 8021B, TPH by Method 8015M, and chloride by Method SM4500Cl-B. Laboratory analytical results for final confirmation samples reported concentrations of BTEX, TPH, and chloride as less than the respective Reclamation Requirements, demonstrating clean margins. Shallow confirmation sample laboratory analytical results screened against Reclamation Requirements are summarized in **Table 1**, and deep confirmation sample laboratory results screened against RRALs are summarized in **Table 2**. Laboratory analytical data packages, including chain of custody documentation, remediation confirmation sampling, are included in **Attachment 3**. Confirmation sampling locations and excavation extents are shown in **Figure 3**.

Remediation Report and Closure Request
State F 1 #026
Incident ID# nAPP2333256523

Maverick Permian LLC
August 21 2025

Excavation Backfill

On June 24, 2025, subsequent to the receipt of confirmation sample results, McNabb completed the backfilling of the excavated areas with 580 cubic yards of clean topsoil and caliche sourced from the nearby Seth Boyde Pit. Photographic documentation showing the excavated areas and final grading after backfilling is provided in **Attachment 2**.

Reclamation and Revegetation

To restore the impacted surface areas to the condition that existed prior to the release, the excavated areas have been backfilled with clean topsoil and caliche. Disturbed areas of impacted pastureland have been graded back to match the surrounding topography and the pre-existing condition to provide erosion control, long-term stability, prevent ponding of water, and preserve surface water flow patterns. The lease road has been restored to a compacted caliche surface graded to prevent erosion.

Subsequent to restoring topography and contouring, the disturbed pasture areas of the Site shown in **Figure 3** were seeded with New Mexico State Land Office (NMSLO) Sandy (S) Sites Seed Mixture in accordance with the Site soil profile detailed above in the Site Characterization Section, to aid in vegetation growth to complete reclamation. Seeding was conducted via broadcast at the application rates specified for broadcast application in pounds pure live seed per acre according to the NMSLO Seed Mix Sandy (S) data sheet provided in **Attachment 4**. Seed was harrowed into the prepared soil bed with a rake attached to a backhoe.

CONCLUSION

Based on the confirmation sampling results, the impacted soil within the release footprint with concentrations greater than Reclamation Requirements has been removed and properly disposed of offsite, the excavated area has been backfilled with clean topsoil, and the pasture has been reclaimed; therefore, Site remediation and reclamation is complete. Revegetation will be monitored, and a Revegetation Report will be prepared and submitted to the NMOCD once revegetation requirements have been achieved at the Site. If you have any questions concerning the remediation activities for the Site, please contact Chuck Terhune by phone at (281) 252-2093 or by email at chuck.terhune@tetrattech.com.

Sincerely,



Sam Raiford
Geologist
Tetra Tech, Inc.



Charles Terhune IV, P.G.
Program Manager
Tetra Tech, Inc.

cc: Mr. Bryce Wagoner, Maverick Permian LLC
New Mexico State Land Office

Remediation Report and Closure Request
State F 1 #026
Incident ID# nAPP2333256523

Maverick Permian LLC
August 21 2025

LIST OF ATTACHMENTS

Figures

- Figure 1 – Site Location and Topographic Map
- Figure 2 – Approximate Release Extent Map
- Figure 3 – Remediation Extents and Confirmation Sampling Map

Tables

- Table 1 – Summary of Analytical Results – Remediation Confirmation Sampling

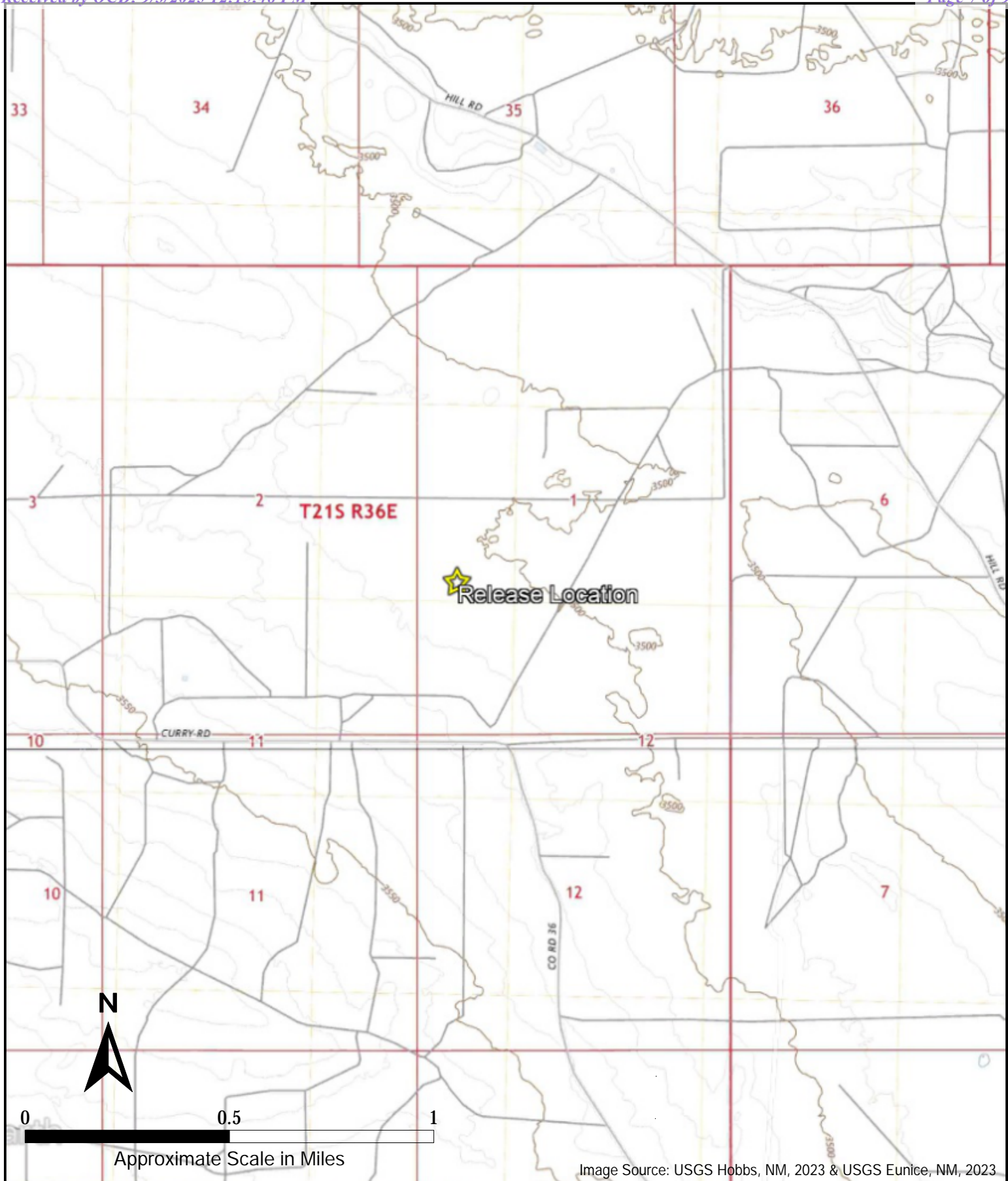
Attachments

- Attachment 1 – Site Characterization Data
- Attachment 2 – Photographic Log
- Attachment 3 – Laboratory Data
- Attachment 4 – Seed Mixture

Remediation Report and Closure Request
State F 1 #026
Incident ID# nAPP2333256523

Maverick Permian LLC
August 21 2025

FIGURES

**TETRA TECH**

1500 CityWest Boulevard
Suite 1000
Houston, Texas 77042

MAVERICK PERMIAN, LLC
INCIDENT ID: NAPP2333256523
(32.507815°, -103.225096°)
Lea County, New Mexico
STATE F 1 #026 RELEASE
SITE LOCATION AND TOPOGRAPHIC MAP

PROJECT NO: 212C-MD-03883
DATE: AUGUST 11, 2025
DESIGNED BY: CHT

Figure
1



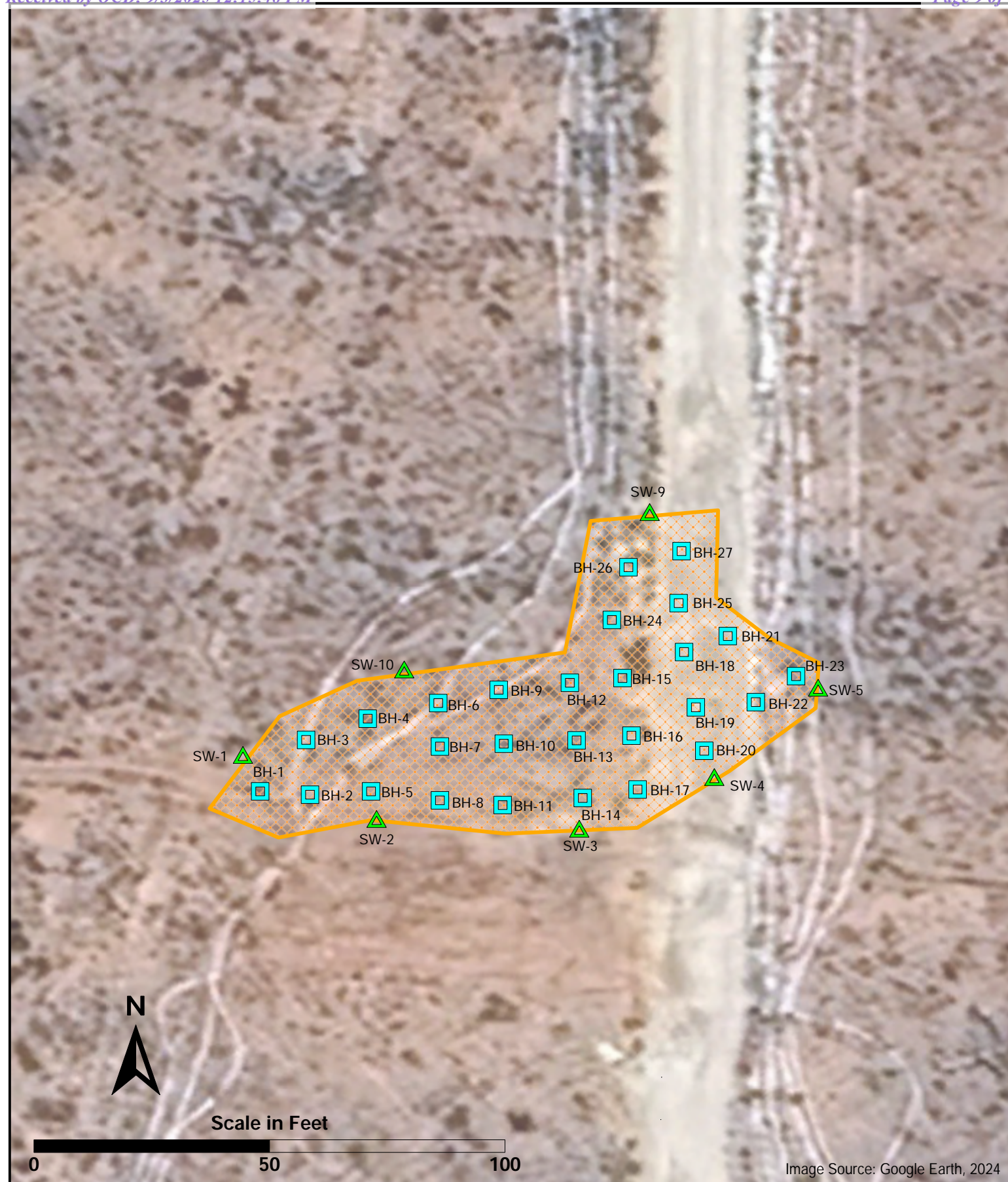
TETRA TECH

1500 CityWest Boulevard
Suite 1000
Houston, Texas 77042

MAVERICK PERMIAN, LLC
INCIDENT ID: NAPP2333256523
(32.507815°, -103.225096°)
Lea County, New Mexico
STATE F 1 #026 RELEASE
RELEASE EXTENT MAP

PROJECT NO: 212C-MD-03883
DATE: AUGUST 11, 2025
DESIGNED BY: CHT

Figure
2

**TETRA TECH**

1500 CityWest Boulevard
Suite 1000
Houston, Texas 77042

MAVERICK PERMIAN, LLC
INCIDENT ID: NAPP2333256523
(32.507815°, -103.225096°)
Lea County, New Mexico
STATE F 1 #026 RELEASE
REMEDATION EXTENT MAP

PROJECT NO: 212C-MD-03883
DATE: AUGUST 11, 2025
DESIGNED BY: CHT

Figure
3

Remediation Report and Closure Request
State F 1 #026
Incident ID# nAPP2333256523

Maverick Permian LLC
August 21 2025

TABLES



TABLE 1
SUMMARY OF ANALYTICAL RESULTS
SHALLOW CONFIRMATION SAMPLING - INCIDENT NAPP2333256523
MAVERICK PERMIAN, LLC
STATE F 1 #026 FLOWLINE RELEASE
LEA COUNTY, NEW MEXICO

Sample ID	Sample Date	Sample Depth	Chloride ¹		BTEX ²										TPH ³									
					Benzene		Toluene		Ethylbenzene		Total Xylenes		Total BTEX		GRO		DRO		EXT DRO		TPH		Total TPH	
															C ₆ - C ₁₀		> C ₁₀ - C ₂₈		> C ₂₈ - C ₃₆		GRO+DRO			(GRO+DRO+EXT DRO)
RRALs (Table I 19.15.29.12 NMAC)		feet bgs	mg/kg	Q	mg/kg	Q	mg/kg	Q	mg/kg	Q	mg/kg	Q	mg/kg	Q	mg/kg	Q	mg/kg	Q	mg/kg	mg/kg				
			600		10						50									100				
SW - 1	6/11/2025	4.0 - 4.5	<16.0		<0.050		<0.050		<0.050		<0.150		<0.300		<10.0		<10.0		<10.0	-	-			
SW - 2	6/11/2025	4.0 - 4.5	<16.0		<0.050		<0.050		<0.050		<0.150		<0.300		<10.0		<10.0		<10.0	-	-			
SW - 3	6/11/2025	4.0 - 4.5	<16.0		<0.050		<0.050		<0.050		<0.150		<0.300		<10.0		<10.0		<10.0	-	-			
SW - 4	6/11/2025	4.0 - 4.5	80		<0.050		<0.050		<0.050		<0.150		<0.300		<10.0		<10.0		<10.0	-	-			
SW - 5	6/11/2025	4.0 - 4.5	1,840		<0.050		<0.050		<0.050		<0.150		<0.300		<10.0		<10.0		<10.0	-	-			
SW - 5	6/23/2025	4.0 - 4.5	80		<0.050		<0.050		<0.050		<0.150		<0.300		<10.0		<10.0		<10.0	-	-			
SW - 6	-	-	Location ID not used																					
SW - 7	-	-	Location ID not used																					
SW - 8	-	-	Location ID not used																					
SW - 9	6/11/2025	4.0 - 4.5	<16.0		<0.050		<0.050		<0.050		<0.150		<0.300		<10.0		<10.0		<10.0	-	-			
SW - 10	6/11/2025	4.0 - 4.5	16		<0.050		<0.050		<0.050		<0.150		<0.300		<10.0		<10.0		<10.0	-	-			

NOTES:

bgs: Below ground surface

mg/kg: Milligrams per kilogram

TPH: Total Petroleum Hydrocarbons

GRO: Gasoline Range Organics

DRO: Diesel Range Organics

ORO: Oil Range Organics

1: Method SM4500CI-B

2: Method 8021B

3: Method 8015M

Bold and highlighted values indicate exceedance of Table I 19.15.29.12 NMAC.**Laterally or vertically overexcavated and resampled**



TABLE 2
SUMMARY OF ANALYTICAL RESULTS
DEEP CONFIRMATION SAMPLING - INCIDENT NAPP2333256523
MAVERICK PERMIAN, LLC
STATE F 1 #026 FLOWLINE RELEASE
LEA COUNTY, NEW MEXICO

Sample ID	Sample Date	Sample Depth	Chloride ¹		BTEX ²										TPH ³								
					Benzene		Toluene		Ethylbenzene		Total Xylenes		Total BTEX		GRO		DRO		EXT DRO		TPH		Total TPH
															C ₆ - C ₁₀		> C ₁₀ - C ₂₈		> C ₂₈ - C ₃₆		GRO+DRO		
feet bgs			mg/kg	Q	mg/kg	Q	mg/kg	Q	mg/kg	Q	mg/kg	Q	mg/kg	Q	mg/kg	Q	mg/kg	Q	mg/kg	Q	mg/kg	mg/kg	
RRALs (Table I 19.15.29.12 NMAC)			20,000	Q	10	Q							50	Q							1,000	2,500	
BH - 1 4'	6/11/2025	4.0 - 4.5	320		<0.050		<0.050		<0.050		<0.150		<0.300		<10.0		<10.0		<10.0		-	-	
BH - 2 4'	6/11/2025	4.0 - 4.5	384		<0.050		<0.050		<0.050		<0.150		<0.300		<10.0		<10.0		<10.0		-	-	
BH - 3 4'	6/11/2025	4.0 - 4.5	96		<0.050		<0.050		<0.050		<0.150		<0.300		<10.0		<10.0		<10.0		-	-	
BH - 4 4'	6/11/2025	4.0 - 4.5	784		<0.050		<0.050		<0.050		<0.150		<0.300		<10.0		<10.0		<10.0		-	-	
BH - 5 4'	6/11/2025	4.0 - 4.5	1,040		<0.050		<0.050		<0.050		<0.150		<0.300		<10.0		<10.0		<10.0		-	-	
BH - 6 4'	6/11/2025	4.0 - 4.5	880		<0.050		<0.050		<0.050		<0.150		<0.300		<10.0		<10.0		<10.0		-	-	
BH - 7 4'	6/11/2025	4.0 - 4.5	752		<0.050		<0.050		<0.050		<0.150		<0.300		<10.0		<10.0		<10.0		-	-	
BH - 8 4'	6/11/2025	4.0 - 4.5	1,580		<0.050		<0.050		<0.050		<0.150		<0.300		<10.0		<10.0		<10.0		-	-	
BH - 9 4'	6/11/2025	4.0 - 4.5	544		<0.050		<0.050		<0.050		<0.150		<0.300		<10.0		<10.0		<10.0		-	-	
BH - 10 4'	6/11/2025	4.0 - 4.5	464		<0.050		<0.050		<0.050		<0.150		<0.300		<10.0		<10.0		<10.0		-	-	
BH - 11 4'	6/11/2025	4.0 - 4.5	912		<0.050		<0.050		<0.050		<0.150		<0.300		<10.0		<10.0		<10.0		-	-	
BH - 12 4'	6/11/2025	4.0 - 4.5	416		<0.050		<0.050		<0.050		<0.150		<0.300		<10.0		<10.0		<10.0		-	-	
BH - 13 4'	6/11/2025	4.0 - 4.5	1,170		<0.050		<0.050		<0.050		<0.150		<0.300		<10.0		<10.0		<10.0		-	-	
BH - 14 4'	6/11/2025	4.0 - 4.5	544		<0.050		<0.050		<0.050		<0.150		<0.300		<10.0		<10.0		<10.0		-	-	
BH - 15 4'	6/11/2025	4.0 - 4.5	320		<0.050		<0.050		<0.050		<0.150		<0.300		<10.0		<10.0		<10.0		-	-	
BH - 16 4'	6/11/2025	4.0 - 4.5	1,010		<0.050		<0.050		<0.050		<0.150		<0.300		<10.0		<10.0		<10.0		-	-	
BH - 17 4'	6/11/2025	4.0 - 4.5	464		<0.050		<0.050		<0.050		<0.150		<0.300		<10.0		<10.0		<10.0		-	-	
BH - 18 4'	6/11/2025	4.0 - 4.5	304		<0.050		<0.050		<0.050		<0.150		<0.300		<10.0		<10.0		<10.0		-	-	
BH - 19 4'	6/11/2025	4.0 - 4.5	944		<0.050		<0.050		<0.050		<0.150		<0.300		<10.0		<10.0		<10.0		-	-	
BH - 20 4'	6/11/2025	4.0 - 4.5	1,150		<0.050		<0.050		<0.050		<0.150		<0.300		<10.0		<10.0		<10.0		-	-	
BH - 21 4'	6/11/2025	4.0 - 4.5	4,000		<0.050		<0.050		<0.050		<0.150		<0.300		<10.0		<10.0		<10.0		-	-	
BH - 22 4'	6/11/2025	4.0 - 4.5	2,080		<0.050		<0.050		<0.050		<0.150		<0.300		<10.0		<10.0		<10.0		-	-	
BH - 23 4'	6/11/2025	4.0 - 4.5	4,120		<0.050		<0.050		<0.050		<0.150		<0.300		<10.0		<10.0		<10.0		-	-	
BH - 24 4'	6/11/2025	4.0 - 4.5	48		<0.050		<0.050		<0.050		<0.150		<0.300		<10.0		<10.0		<10.0		-	-	
BH - 25 4'	6/11/2025	4.0 - 4.5	352		<0.050		<0.050		<0.050		<0.150		<0.300		<10.0		<10.0		<10.0		-	-	
BH - 26 4'	6/11/2025	4.0 - 4.5	48		<0.050		<0.050		<0.050		<0.150		<0.300		<10.0		<10.0		<10.0		-	-	
BH - 27 4'	6/11/2025	4.0 - 4.5	32		<0.050		<0.050		<0.050		<0.150		<0.300		<10.0		<10.0		<10.0		-	-	

NOTES:

bgs: Below ground surface

mg/kg: Milligrams per kilogram

TPH: Total Petroleum Hydrocarbons

GRO: Gasoline Range Organics

DRO: Diesel Range Organics

ORO: Oil Range Organics

1: Method SM4500Cl-B

2: Method 8021B

3: Method 8015M

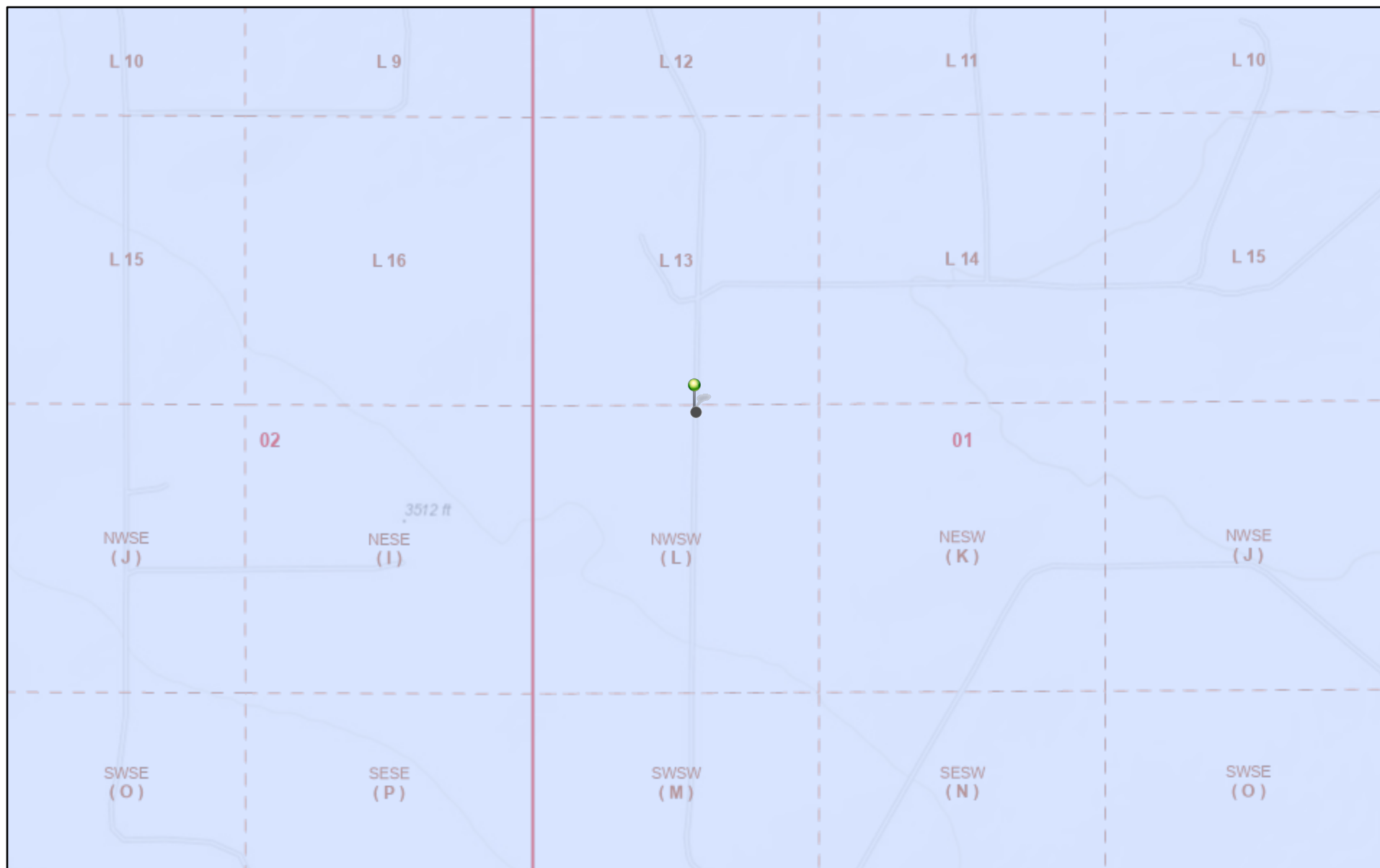
Bold and highlighted values indicate exceedance of Table I 19.15.29.12 NMAC.

Remediation Report and Closure Request
State F 1 #026
Incident ID# nAPP2333256523

Maverick Permian LLC
August 21 2025

ATTACHMENT 1 – SITE CHARACTERIZATION DATA

OCD Well Locations



8/29/2025, 10:12:11 AM



Override 1

Karst Occurrence Potential

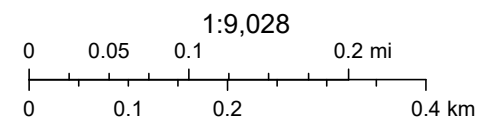
Low



PLSS Second Division



PLSS First Division



BLM, OCD, New Mexico Tech, Bureau of Land Management, Texas Parks & Wildlife, Esri, HERE, Garmin, INCREMENT P, Intermap, USGS, METI/NASA,

New Mexico Oil Conservation Division



WELL PLUGGING PLAN OF OPERATIONS



NOTE: A Well Plugging Plan of Operations shall be filed with and accepted by the Office of the State Engineer prior to plugging. This form may be used to plug a single well, or if you are plugging multiple monitoring wells on the same site using the same plugging methodology.

Alert! Your well may be eligible to participate in the Aquifer Mapping Program (AMP)-NM Bureau of Geology geoinfo.nmt.edu/resources/water/cgmn/ if within an area of interest and meets the minimum construction requirements, such as there is still water in your well, and the well construction reflected in a well record and log is not compromised, contact AMP at 575-835-5038 or -6951, or by email nmbg-waterlevels@nmt.edu, prior to completing this prior form. Showing proof to the OSE that your well was accepted in this program, may delay the plugging of your well until a later date.

I. FILING FEE: There is no filing fee for this form.

II. GENERAL / WELL OWNERSHIP: ☐ Check here if proposing one plan for multiple monitoring wells on the same site and attaching WD-08m

Existing Office of the State Engineer POD Number (Well Number) for well to be plugged: CP-2064-P001

Name of well owner: Maverick Permian LLC

Mailing address: 1000 Main St. Ste 2900

County: _____

City: Houston

State: TX

Zip code: 77002

Phone number: 928-241-1862

E-mail: bryce.wagoner@mavresources.com

III. WELL DRILLER INFORMATION:

Well Driller contracted to provide plugging services: James Hawley/H&R Enterprises, LLC.

New Mexico Well Driller License No.: WD-1862

Expiration Date: June 16, 2025

IV. WELL INFORMATION: ☐ Check here if this plan describes method for plugging multiple monitoring wells on the same site and attach supplemental form WD-08m and skip to #2 in this section.

Note: A copy of the existing Well Record for the well(s) to be plugged should be attached to this plan.

1) GPS Well Location: Latitude: 32 deg, 30 min, 5.59 sec
Longitude: 103 deg, 13 min, 33.37 sec, NAD 83

2) Reason(s) for plugging well(s):

OSE DII ROSWELL NM
29 APR '25 PM 1:48

Temporary well to determine depth of groundwater at remediation site.

3) Was well used for any type of monitoring program? no If yes, please use section VII of this form to detail what hydrogeologic parameters were monitored. If the well was used to monitor contaminated or poor quality water, authorization from the New Mexico Environment Department may be required prior to plugging.

4) Does the well tap brackish, saline, or otherwise poor quality water? no If yes, provide additional detail, including analytical results and/or laboratory report(s): _____

5) Static water level: unknown feet below land surface / feet above land surface (circle one)

6) Depth of the well: 105 feet

- 7) Inside diameter of innermost casing: 2 inches.
- 8) Casing material: PVC
- 9) The well was constructed with:
☐ an open-hole production interval, state the open interval: _____
☒ a well screen or perforated pipe, state the screened interval(s): 10ft
- 10) What annular interval surrounding the artesian casing of this well is cement-grouted? N/A
- 11) Was the well built with surface casing? no If yes, is the annulus surrounding the surface casing grouted or otherwise sealed? _____ If yes, please describe:
- 12) Has all pumping equipment and associated piping been removed from the well? N/A If not, describe remaining equipment and intentions to remove prior to plugging in Section VII of this form.

V. DESCRIPTION OF PLANNED WELL PLUGGING: ☐ If plugging method differs between multiple wells on same site, a separate form must be completed for each method.

Note: If this plan proposes to plug an artesian well in a way other than with cement grout, placed bottom to top with a tremie pipe, a detailed diagram of the well showing proposed final plugged configuration shall be attached, as well as any additional technical information, such as geophysical logs, that are necessary to adequately describe the proposal. Attach a copy of any signed OSE variance to this plugging plan.

Also, if this planned plugging plan requires a variance to 19.27.4 NMAC, attach a detailed variance request signed by the applicant.

- 1) Describe the method by which cement grout shall be placed in the well, or describe requested plugging methodology proposed for the well:

We anticipate this to be a dry hole, drill cuttings to 10'BGS, hydrated bentonite chips from 10' BGS to surface.
- 2) Will well head be cut-off below land surface after plugging? N/A

VI. PLUGGING AND SEALING MATERIALS:

Note: The plugging of a well that taps poor quality water may require the use of a specialty cement or specialty sealant. Attach a copy of the batch mix recipe from the cement company and/or product description for specialty cement mixes or any sealant that deviates from the list of OSE approved sealants.

- 1) For plugging intervals that employ cement grout, complete and attach Table A.
- 2) For plugging intervals that will employ approved non-cement based sealant(s), complete and attach Table B.
- 3) Theoretical volume of grout required to plug the well to land surface: 154.35
- 4) Type of Cement proposed: 3/8 bentonite hole plug
- 5) Proposed cement grout mix: _____ gallons of water per 94 pound sack of Portland cement.
- 6) Will the grout be: _____ batch-mixed and delivered to the site
x mixed on site

OSE DII ROSWELL NM
29 APR '25 PM 1:48

- 7) Grout additives requested, and percent by dry weight relative to cement:

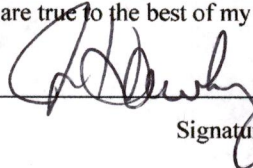
N/A

- 8) Additional notes and calculations:

VII. ADDITIONAL INFORMATION: List additional information below, or on separate sheet(s):

VIII. SIGNATURE:

I, James Hawley, say that I have carefully read the foregoing Well Plugging Plan of Operations and any attachments, which are a part hereof; that I am familiar with the rules and regulations of the State Engineer pertaining to the plugging of wells and will comply with them, and that each and all of the statements in the Well Plugging Plan of Operations and attachments are true to the best of my knowledge and belief.



Signature of Applicant

4/22/25

Date

IX. ACTION OF THE STATE ENGINEER:

This Well Plugging Plan of Operations is:

☒ Approved subject to the attached conditions.
☐ Not approved for the reasons provided on the attached letter.

Witness my hand and official seal this 30th day of April, 2025

Elizabeth K. Anderson P.E.

_____, New Mexico State Engineer

By: K. Parekh
 Kashyap Parekh

Water Resources Manager I

WD-08 Well Plugging Plan
 Version: March 07, 2022
 Page 3 of 5



TABLE A - For plugging intervals that employ cement grout. Start with deepest interval.

	Interval 1 – deepest	Interval 2	Interval 3 – most shallow
			Note: if the well is non-artesian and breaches only one aquifer, use only this column.
Top of proposed interval of grout placement (ft bgl)			
Bottom of proposed interval of grout placement (ft bgl)			
Theoretical volume of grout required per interval (gallons)			
Proposed cement grout mix gallons of water per 94-lb. sack of Portland cement			
Mixed on-site or batch-mixed and delivered?			
Grout additive 1 requested			
Additive 1 percent by dry weight relative to cement			
Grout additive 2 requested			OSE DII ROSWELL NM 29 APR '25 PM1:48
Additive 2 percent by dry weight relative to cement			

TABLE B - For plugging intervals that will employ approved non-cement based sealant(s). Start with deepest interval.

	Interval 1 – deepest	Interval 2	Interval 3 – most shallow
			Note: if the well is non-artesian and breaches only one aquifer, use only this column.
Top of proposed interval of sealant placement (ft bgl)			0-10' hydrated bentonite chips
Bottom of proposed sealant or grout placement (ft bgl)			10'-105' drill cuttings
Theoretical volume of sealant required per interval (gallons)			154.35
Proposed abandonment sealant (manufacturer and trade name)			Baroid 3/8 hole plug

OSE DII ROSWELL NM
29 APR '25 PM1:48



STATE OF NEW MEXICO
OFFICE OF THE STATE ENGINEER
DISTRICT II
TELEPHONE: (575) 622-6521 FAX: (575) 623-8559

ELIZABETH K. ANDERSON, P.E.
STATE ENGINEER

1900 West Second Street
Roswell, New Mexico 88201

April 30, 2025

Maverick Permian LLC
1000 Main Street, Suite 2900
Houston, NM 77002

RE: Well Plugging Plan of Operations for well No. CP-2064-POD1

Greetings:

Enclosed is your copy of the Well Plugging Plan of Operations for the above referenced well subject to the attached Conditions of Approval. The proposed method of operation is found to be acceptable and in accordance with the Rules and Regulations Governing Well Driller Licensing; Construction, Repair and Plugging of Wells 19.27.4 NMAC adopted June 30, 2017 by the State Engineer. subject to the attached Conditions of Approval.

Within 30 days after the well is plugged, the well driller is required to file a complete plugging record with the OSE and the permit holder.

Sincerely,

A handwritten signature in black ink that reads "K. Parekh".

Kashyap Parekh
Water Resources Manager I



STATE OF NEW MEXICO
OFFICE OF THE STATE ENGINEER
ROSWELL

1900 West Second St.
 Roswell, New Mexico 88201
 Phone: (575) 622-6521
 Fax: (575) 623- 8559

Applicant has identified wells, listed below, to be plugged. James Hawley/H & R Enterprises LLC
 (WD-1862) will perform the plugging.

Permittee: Maverick Permian LLC
 NMOSE Permit Number: CP-2064-POD1

NMOSE File	Casing diameter (inches)	Well depth (feet bgl)	Approximate static water level (feet bgl)	Latitude	Longitude
CP-2064-POD1	6.0 (Soil Boring)	105.0	Unknown	32° 30' 5.59"	103° 13' 33.37"

Specific Plugging Conditions of Approval for Well located in Lea County, New Mexico.

1. Water well drilling and well drilling activities, including well plugging, are regulated under 19.27.4 NMAC, which requires any person engaged in the business of well drilling within New Mexico to obtain a Well Driller License issued by the New Mexico Office of the State Engineer (NMOSE). Therefore, the firm of a New Mexico licensed Well Driller shall perform the well plugging.
2. **Groundwater encountered:** The total Theoretical volume of sealant required for abandonment of soil boring well is approximately 154.16 gallons. Total minimum volume of necessary sealant shall be calculated upon sounding the actual pluggable depth of well, which is estimated at 105 feet.
3. **Dry Hole:** The total Theoretical volume of sealant required for abandonment of soil boring well is approximately 14.68 gallons. Total minimum volume of necessary sealant shall be calculated upon sounding the actual pluggable depth of well, which is estimated at 10 feet.
4. **Groundwater encountered:** Bentonite Pellets. The bentonite shall be hydrated separately and added above static water level, a minimum of 5-gallons of fresh water shall be added to the borehole per 50-lb of bentonite chips.
5. **Dry Hole:** (a) Drill cuttings up to ten feet of land surface. (b) 10 feet to 0 feet – Bentonite Pellets. The bentonite shall be hydrated separately with its required increments of water prior to being mixed into the cement slurry.

6. Placement of the sealant within the wells shall be by tremie pipe extending to near well bottom and kept below top of the slurry column as the well is plugged from bottom-upwards in a manner that displaces the standing water column. The tremie shall be incrementally removed to retain the tremie bottom a limited distance above the top of the rising column of pellets throughout the plugging process.
7. Any open annulus encountered surrounding the casing shall also be sealed by the placement of the approved sealant. When plugging shallow wells with no construction or environmental concerns, and if the well record on a well to be plugged shows a proper 20-foot annular seal, a plugging plan can propose the use of clean fill material to a nominal 30 feet bgs, then placing an OSE approved sealant to surface. Lacking that information, we would require an excavation of at least 2-feet which shall then be filled in its entirety with sealant to surface.
8. Should the NMED, or another regulatory agency sharing jurisdiction of the project authorize, or by regulation require a more stringent well plugging procedure than herein acknowledged, the more-stringent procedure should be followed. This, in part, includes provisions regarding pre-authorization to proceed, contaminant remediation, inspection, pulling/perforating of casing, or prohibition of free discharge of any fluid from the borehole during or related to the plugging process.
9. NMOSE witnessing of the plugging of the soil boring will not be required.
10. Any deviation from this plan must obtain an approved variance from this office prior to implementation.
11. A Well Plugging Record itemizing actual abandonment process and materials used shall be filed with the State Engineer within 30 days after completion of well plugging. For the plugging record, please resurvey coordinate location for well and note coordinate system for GPS unit. Please attach a copy of these plugging conditions.

The NMOSE Well Plugging Plan of Operations is hereby approved with the aforesaid conditions applied.

Witness my hand and seal this 29th day of April 2025

Elizabeth K. Anderson, P.E. State Engineer

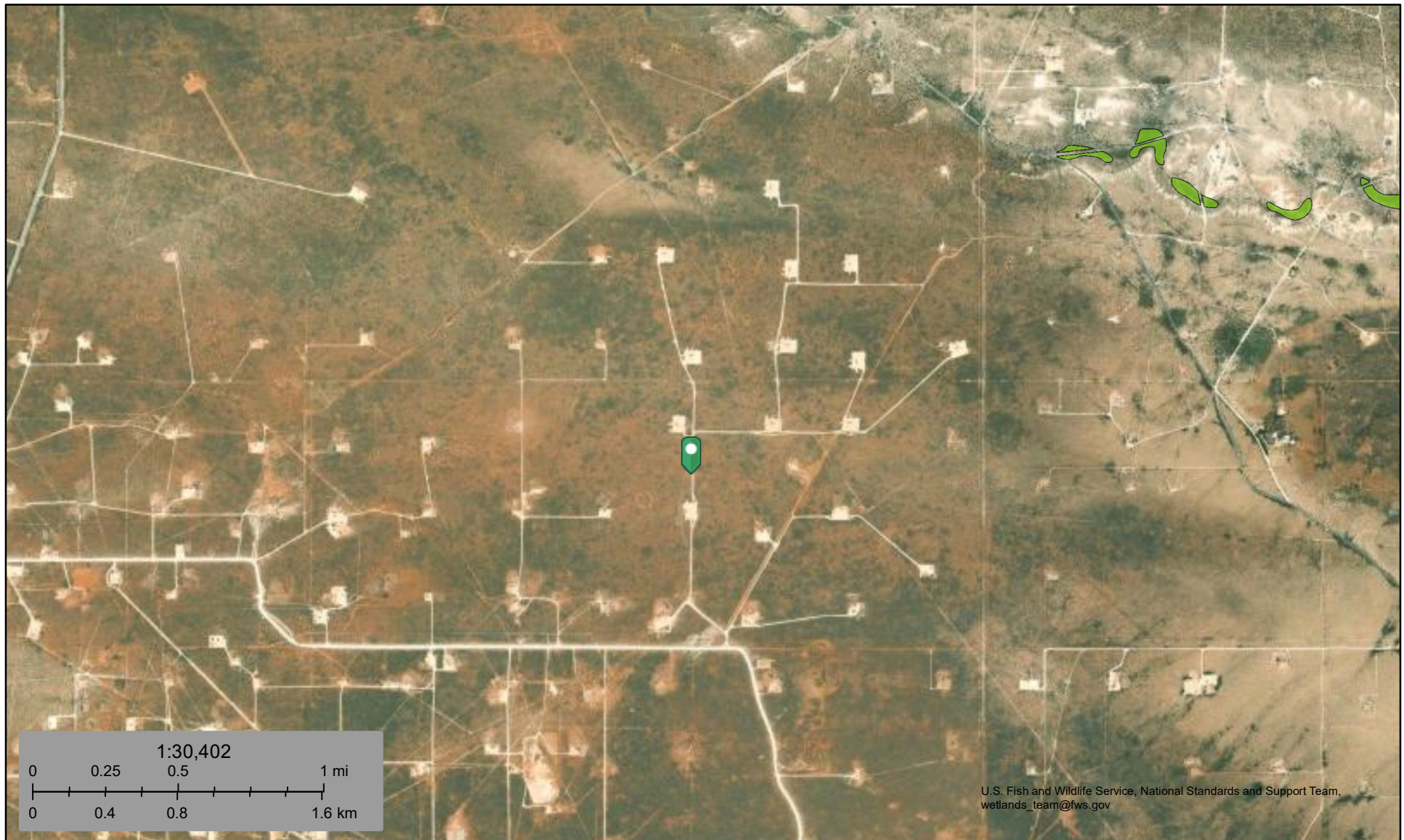
By: K. Parekh

Kashyap Parekh
Water Resources Manager I





State F 1 #026 Wetlands



August 11, 2025

Wetlands

- Estuarine and Marine Deepwater
- Estuarine and Marine Wetland

- Freshwater Emergent Wetland
- Freshwater Forested/Shrub Wetland
- Freshwater Pond

- Lake
- Other
- Riverine

This map is for general reference only. The US Fish and Wildlife Service is not responsible for the accuracy or currentness of the base data shown on this map. All wetlands related data should be used in accordance with the layer metadata found on the Wetlands Mapper web site.

National Flood Hazard Layer FIRMMette



103°13'49"W 32°30'43"N



0 250 500 1,000 1,500 2,000 Feet

1:6,000

103°13'12"W 32°30'13"N

Released to Imaging: 9/16/2025 11:50:32 AM

Basemap Imagery Source: USGS National Map 2023

Legend

SEE FIS REPORT FOR DETAILED LEGEND AND INDEX MAP FOR FIRM PANEL LAYOUT

SPECIAL FLOOD HAZARD AREAS		Without Base Flood Elevation (BFE) Zone A, V, A99
		With BFE or Depth Zone AE, AO, AH, VE, AR
		Regulatory Floodway
OTHER AREAS OF FLOOD HAZARD		0.2% Annual Chance Flood Hazard, Areas of 1% annual chance flood with average depth less than one foot or with drainage areas of less than one square mile Zone X
		Future Conditions 1% Annual Chance Flood Hazard Zone X
		Area with Reduced Flood Risk due to Levee. See Notes. Zone X
		Area with Flood Risk due to Levee Zone D
OTHER AREAS		NO SCREEN Area of Minimal Flood Hazard Zone X
		Effective LOMRs
		Area of Undetermined Flood Hazard Zone D
GENERAL STRUCTURES		Channel, Culvert, or Storm Sewer
		Levee, Dike, or Floodwall
OTHER FEATURES		20.2 Cross Sections with 1% Annual Chance Water Surface Elevation
		17.5 Cross Sections with 1% Annual Chance Water Surface Elevation
		Coastal Transect
		Base Flood Elevation Line (BFE)
		Limit of Study
		Jurisdiction Boundary
		Coastal Transect Baseline
MAP PANELS		Digital Data Available
		No Digital Data Available
		Unmapped



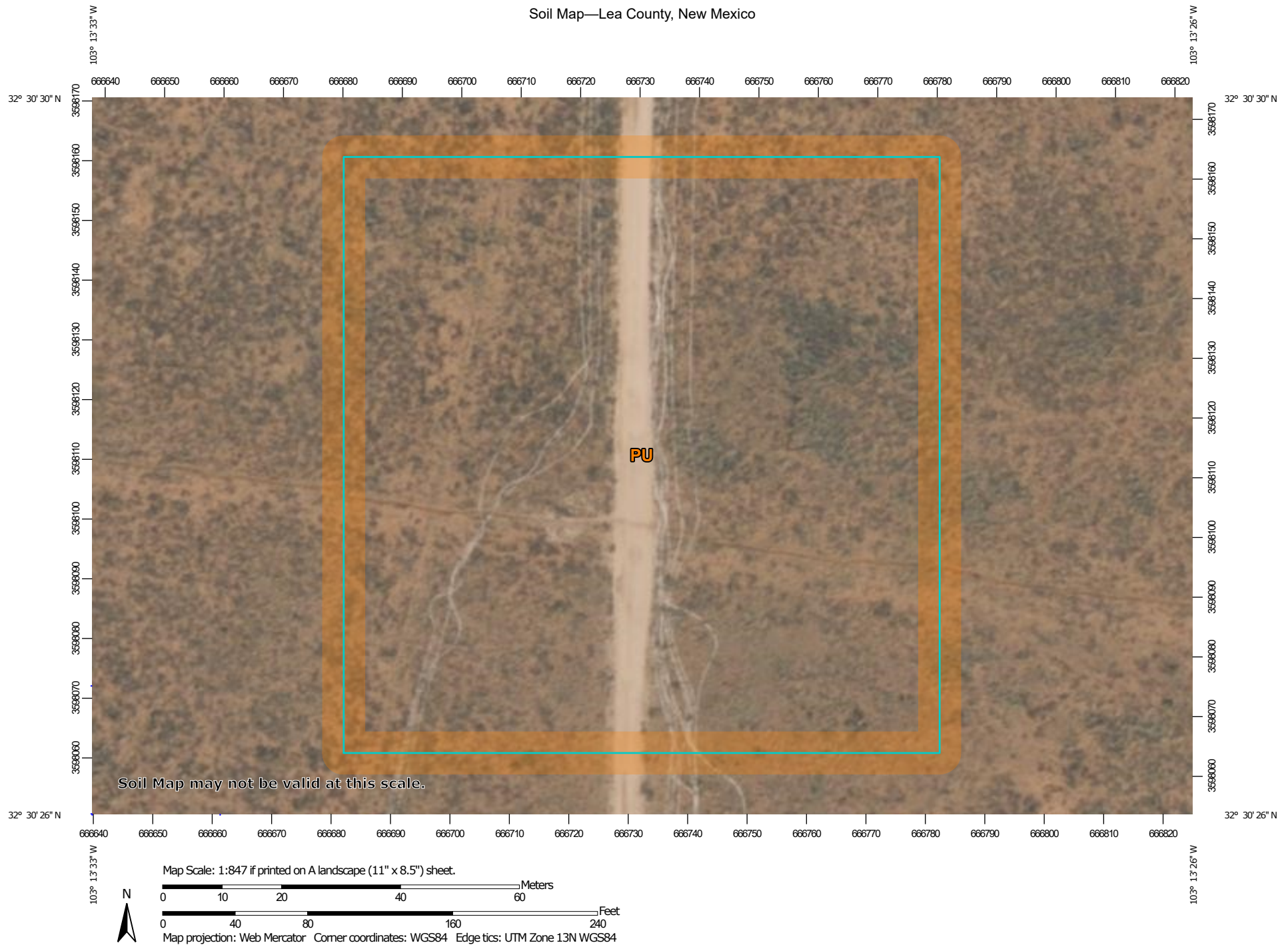
The pin displayed on the map is an approximate point selected by the user and does not represent an authoritative property location.

This map complies with FEMA's standards for the use of digital flood maps if it is not void as described below. The basemap shown complies with FEMA's basemap accuracy standards

The flood hazard information is derived directly from the authoritative NFHL web services provided by FEMA. This map was exported on 8/11/2025 at 3:34 PM and does not reflect changes or amendments subsequent to this date and time. The NFHL and effective information may change or become superseded by new data over time.

This map image is void if the one or more of the following map elements do not appear: basemap imagery, flood zone labels, legend, scale bar, map creation date, community identifiers, FIRM panel number, and FIRM effective date. Map images for unmapped and unmodernized areas cannot be used for regulatory purposes.

Soil Map—Lea County, New Mexico



Natural Resources
Conservation Service

Web Soil Survey
National Cooperative Soil Survey

8/11/2025
Page 1 of 3

Soil Map—Lea County, New Mexico

MAP LEGEND

Area of Interest (AOI)

 Area of Interest (AOI)

Soils

 Soil Map Unit Polygons

 Soil Map Unit Lines

 Soil Map Unit Points

Special Point Features



Blowout



Borrow Pit



Clay Spot



Closed Depression



Gravel Pit



Gravelly Spot



Landfill



Lava Flow



Marsh or swamp



Mine or Quarry



Miscellaneous Water



Perennial Water



Rock Outcrop



Saline Spot



Sandy Spot



Severely Eroded Spot



Sinkhole



Slide or Slip



Sodic Spot



Spoil Area



Stony Spot



Very Stony Spot



Wet Spot



Other



Special Line Features

Water Features



Streams and Canals

Transportation



Rails



Interstate Highways



US Routes



Major Roads



Local Roads

Background



Aerial Photography

MAP INFORMATION

The soil surveys that comprise your AOI were mapped at 1:20,000.

Warning: Soil Map may not be valid at this scale.

Enlargement of maps beyond the scale of mapping can cause misunderstanding of the detail of mapping and accuracy of soil line placement. The maps do not show the small areas of contrasting soils that could have been shown at a more detailed scale.

Please rely on the bar scale on each map sheet for map measurements.

Source of Map: Natural Resources Conservation Service

Web Soil Survey URL:

Coordinate System: Web Mercator (EPSG:3857)

Maps from the Web Soil Survey are based on the Web Mercator projection, which preserves direction and shape but distorts distance and area. A projection that preserves area, such as the Albers equal-area conic projection, should be used if more accurate calculations of distance or area are required.

This product is generated from the USDA-NRCS certified data as of the version date(s) listed below.

Soil Survey Area: Lea County, New Mexico

Survey Area Data: Version 21, Sep 3, 2024

Soil map units are labeled (as space allows) for map scales 1:50,000 or larger.

Date(s) aerial images were photographed: Feb 7, 2020—May 12, 2020

The orthophoto or other base map on which the soil lines were compiled and digitized probably differs from the background imagery displayed on these maps. As a result, some minor shifting of map unit boundaries may be evident.

Map Unit Legend

Map Unit Symbol	Map Unit Name	Acres in AOI	Percent of AOI
PU	Pyote and Maljamar fine sands	2.5	100.0%
Totals for Area of Interest		2.5	100.0%

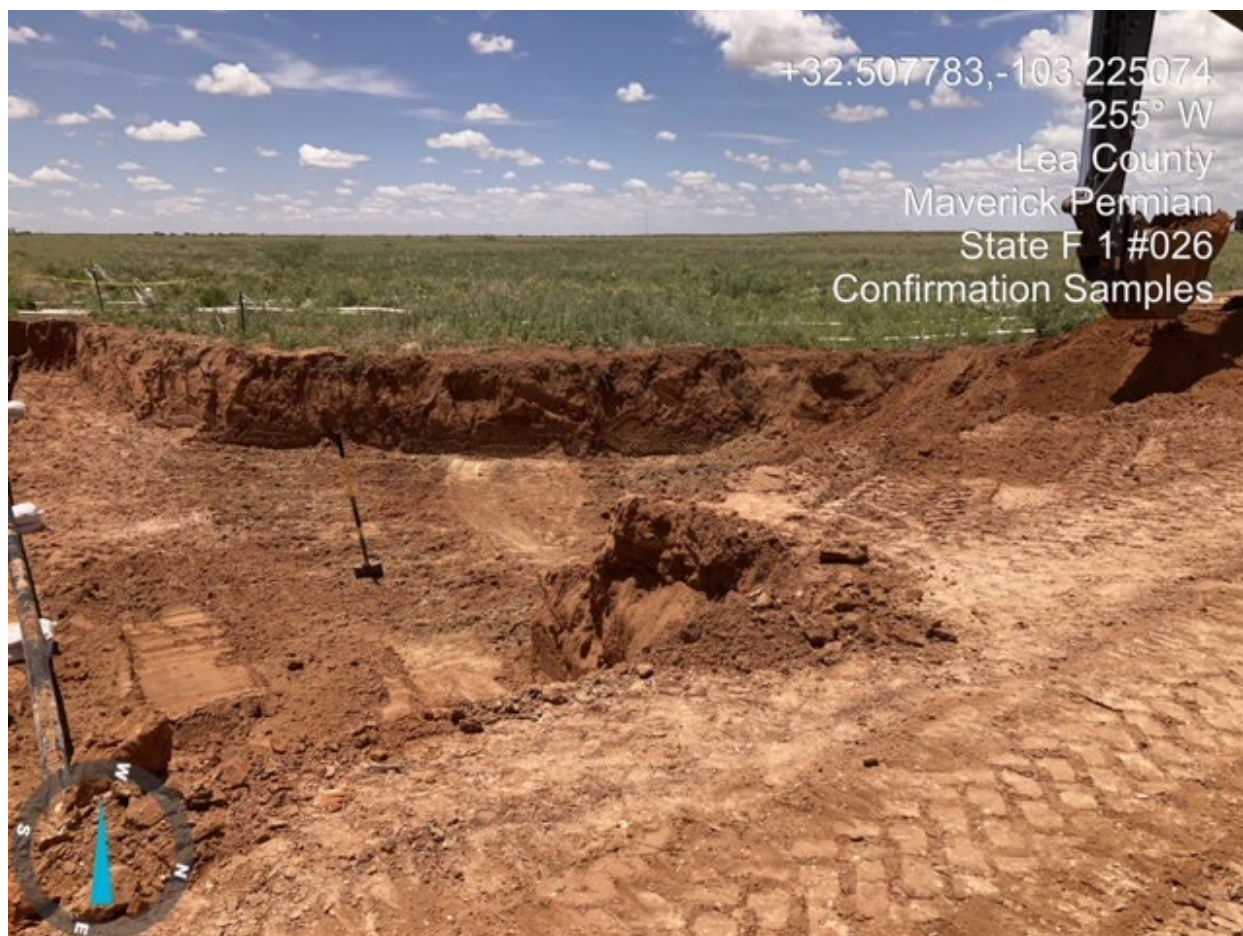
Remediation Report and Closure Request
State F 1 #026
Incident ID# nAPP2333256523

Maverick Permian LLC
August 21 2025

ATTACHMENT 2 – PHOTOGRAPHIC LOG

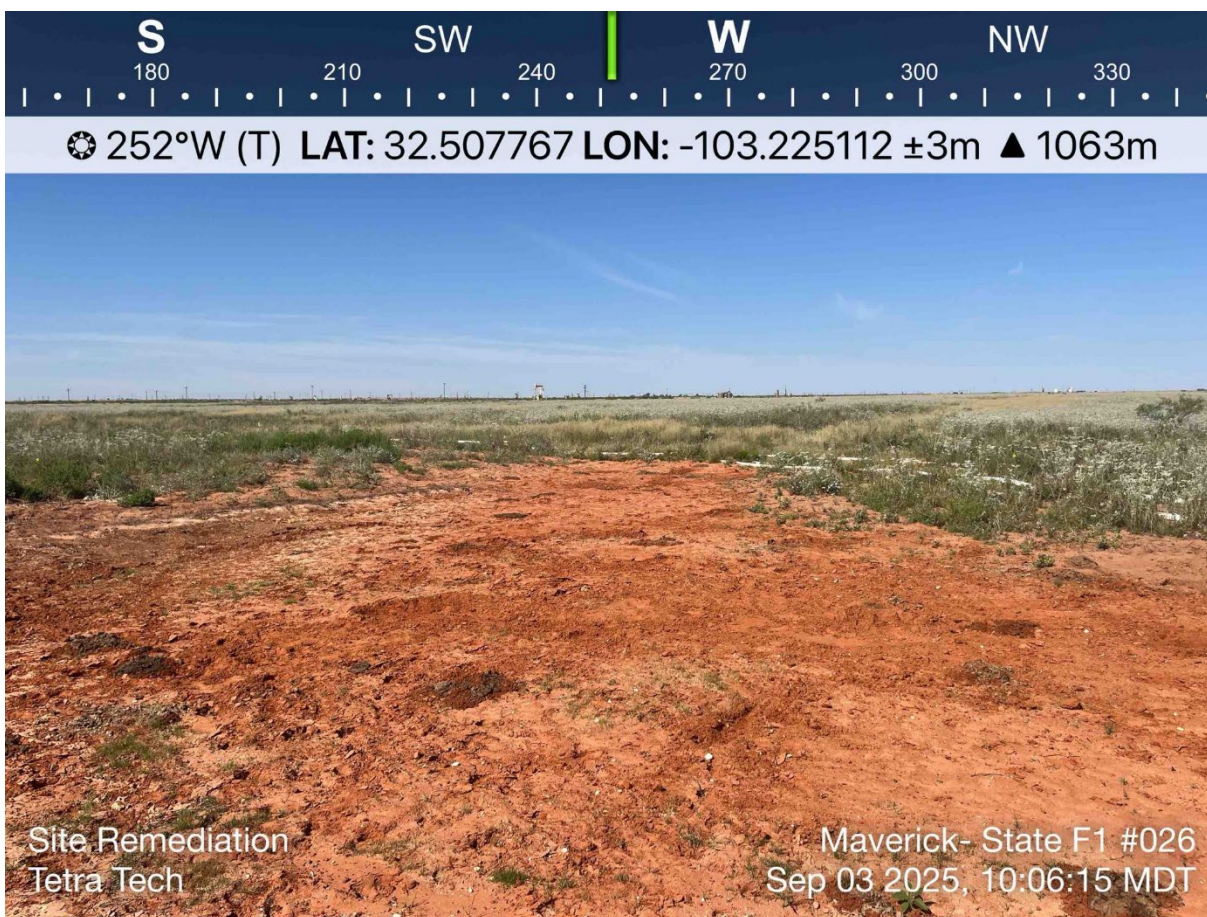














Remediation Report and Closure Request
State F 1 #026
Incident ID# nAPP2333256523

Maverick Permian LLC
August 21 2025

ATTACHMENT 3 – LABORATORY DATA



PHONE (575) 393-2326 ° 101 E. MARLAND ° HOBBS, NM 88240

June 13, 2025

CHUCK TERHUNE

TETRA TECH

901 WEST WALL STREET , STE 100

MIDLAND, TX 79701

RE: STATE F1 #026

Enclosed are the results of analyses for samples received by the laboratory on 06/12/25 8:40.

Cardinal Laboratories is accredited through Texas NELAP under certificate number TX-C25-00101. Accreditation applies to drinking water, non-potable water and solid and chemical materials. All accredited analytes are denoted by an asterisk (*). For a complete list of accredited analytes and matrices visit the TCEQ website at www.tceq.texas.gov/field/qa/lab_accred_certif.html.

Cardinal Laboratories is accredited through the State of Colorado Department of Public Health and Environment for:

Method EPA 552.2	Haloacetic Acids (HAA-5)
Method EPA 524.2	Total Trihalomethanes (TTHM)
Method EPA 524.4	Regulated VOCs (V1, V2, V3)

Accreditation applies to public drinking water matrices.

This report meets NELAP requirements and is made up of a cover page, analytical results, and a copy of the original chain-of-custody. If you have any questions concerning this report, please feel free to contact me.

Sincerely,

A handwritten signature in black ink that reads "Mike Snyder". The signature is fluid and cursive, with the first name "Mike" and last name "Snyder" clearly distinguishable.

Mike Snyder For Celey D. Keene

Lab Director/Quality Manager



PHONE (575) 393-2326 ° 101 E. MARLAND ° HOBBS, NM 88240

Analytical Results For:

TETRA TECH
 CHUCK TERHUNE
 901 WEST WALL STREET , STE 100
 MIDLAND TX, 79701
 Fax To: (432) 682-3946

Received: 06/12/2025
 Reported: 06/13/2025
 Project Name: STATE F1 #026
 Project Number: 212C-MD-03883
 Project Location: LEA CO NM

Sampling Date: 06/11/2025
 Sampling Type: Soil
 Sampling Condition: Cool & Intact
 Sample Received By: Alyssa Parras

Sample ID: BH - 1 4' (H253482-01)

BTEX 8021B		mg/kg		Analyzed By: JH						
Analyte	Result	Reporting Limit	Analyzed	Method Blank	BS	% Recovery	True Value QC	RPD	Qualifier	
Benzene*	<0.050	0.050	06/12/2025	ND	2.13	107	2.00	12.7		
Toluene*	<0.050	0.050	06/12/2025	ND	1.96	98.2	2.00	13.3		
Ethylbenzene*	<0.050	0.050	06/12/2025	ND	2.00	99.8	2.00	11.3		
Total Xylenes*	<0.150	0.150	06/12/2025	ND	6.17	103	6.00	10.4		
Total BTEX	<0.300	0.300	06/12/2025	ND						

Surrogate: 4-Bromofluorobenzene (PID) 106 % 71.5-134

Chloride, SM4500Cl-B		mg/kg		Analyzed By: HM					
Analyte	Result	Reporting Limit	Analyzed	Method Blank	BS	% Recovery	True Value QC	RPD	Qualifier
Chloride	320	16.0	06/12/2025	ND	432	108	400	3.64	

TPH 8015M		mg/kg		Analyzed By: MS					
Analyte	Result	Reporting Limit	Analyzed	Method Blank	BS	% Recovery	True Value QC	RPD	Qualifier
GRO C6-C10*	<10.0	10.0	06/12/2025	ND	229	115	200	0.385	
DRO >C10-C28*	<10.0	10.0	06/12/2025	ND	206	103	200	3.64	
EXT DRO >C28-C36	<10.0	10.0	06/12/2025	ND					

Surrogate: 1-Chlorooctane 100 % 44.4-145

Surrogate: 1-Chlorooctadecane 96.8 % 40.6-153

Cardinal Laboratories

*=Accredited Analyte

PLEASE NOTE: Liability and Damages. Cardinal's liability and client's exclusive remedy for any claim arising, whether based in contract or tort, shall be limited to the amount paid by client for analyses. All claims, including those for negligence and any other cause whatsoever shall be deemed waived unless made in writing and received by Cardinal within thirty (30) days after completion of the applicable service. In no event shall Cardinal be liable for incidental or consequential damages, including, without limitation, business interruptions, loss of use, or loss of profits incurred by client, its subsidiaries, affiliates or successors arising out of or related to the performance of the services hereunder by Cardinal, regardless of whether such claim is based upon any of the above stated reasons or otherwise. Results relate only to the samples identified above. This report shall not be reproduced except in full with written approval of Cardinal Laboratories.

Mike Snyder For Celey D. Keene, Lab Director/Quality Manager



PHONE (575) 393-2326 ° 101 E. MARLAND ° HOBBS, NM 88240

Analytical Results For:

TETRA TECH
 CHUCK TERHUNE
 901 WEST WALL STREET , STE 100
 MIDLAND TX, 79701
 Fax To: (432) 682-3946

Received: 06/12/2025
 Reported: 06/13/2025
 Project Name: STATE F1 #026
 Project Number: 212C-MD-03883
 Project Location: LEA CO NM

Sampling Date: 06/11/2025
 Sampling Type: Soil
 Sampling Condition: Cool & Intact
 Sample Received By: Alyssa Parras

Sample ID: BH - 2 4' (H253482-02)

BTEx 8021B		mg/kg		Analyzed By: JH						
Analyte	Result	Reporting Limit	Analyzed	Method Blank	BS	% Recovery	True Value QC	RPD	Qualifier	
Benzene*	<0.050	0.050	06/12/2025	ND	2.13	107	2.00	12.7		
Toluene*	<0.050	0.050	06/12/2025	ND	1.96	98.2	2.00	13.3		
Ethylbenzene*	<0.050	0.050	06/12/2025	ND	2.00	99.8	2.00	11.3		
Total Xylenes*	<0.150	0.150	06/12/2025	ND	6.17	103	6.00	10.4		
Total BTEx	<0.300	0.300	06/12/2025	ND						

Surrogate: 4-Bromofluorobenzene (PID) 96.8 % 71.5-134

Chloride, SM4500CI-B		mg/kg		Analyzed By: HM					
Analyte	Result	Reporting Limit	Analyzed	Method Blank	BS	% Recovery	True Value QC	RPD	Qualifier
Chloride	384	16.0	06/12/2025	ND	432	108	400	3.64	

TPH 8015M		mg/kg		Analyzed By: MS					
Analyte	Result	Reporting Limit	Analyzed	Method Blank	BS	% Recovery	True Value QC	RPD	Qualifier
GRO C6-C10*	<10.0	10.0	06/12/2025	ND	229	115	200	0.385	
DRO >C10-C28*	<10.0	10.0	06/12/2025	ND	206	103	200	3.64	
EXT DRO >C28-C36	<10.0	10.0	06/12/2025	ND					

Surrogate: 1-Chlorooctane 102 % 44.4-145

Surrogate: 1-Chlorooctadecane 98.2 % 40.6-153

Cardinal Laboratories

*=Accredited Analyte

PLEASE NOTE: Liability and Damages. Cardinal's liability and client's exclusive remedy for any claim arising, whether based in contract or tort, shall be limited to the amount paid by client for analyses. All claims, including those for negligence and any other cause whatsoever shall be deemed waived unless made in writing and received by Cardinal within thirty (30) days after completion of the applicable service. In no event shall Cardinal be liable for incidental or consequential damages, including, without limitation, business interruptions, loss of use, or loss of profits incurred by client, its subsidiaries, affiliates or successors arising out of or related to the performance of the services hereunder by Cardinal, regardless of whether such claim is based upon any of the above stated reasons or otherwise. Results relate only to the samples identified above. This report shall not be reproduced except in full with written approval of Cardinal Laboratories.

Mike Snyder For Celey D. Keene, Lab Director/Quality Manager



PHONE (575) 393-2326 ° 101 E. MARLAND ° HOBBS, NM 88240

Analytical Results For:

TETRA TECH
 CHUCK TERHUNE
 901 WEST WALL STREET , STE 100
 MIDLAND TX, 79701
 Fax To: (432) 682-3946

Received: 06/12/2025
 Reported: 06/13/2025
 Project Name: STATE F1 #026
 Project Number: 212C-MD-03883
 Project Location: LEA CO NM

Sampling Date: 06/11/2025
 Sampling Type: Soil
 Sampling Condition: Cool & Intact
 Sample Received By: Alyssa Parras

Sample ID: BH - 3 4' (H253482-03)

BTEX 8021B		mg/kg		Analyzed By: JH						
Analyte	Result	Reporting Limit	Analyzed	Method Blank	BS	% Recovery	True Value QC	RPD	Qualifier	
Benzene*	<0.050	0.050	06/12/2025	ND	2.13	107	2.00	12.7		
Toluene*	<0.050	0.050	06/12/2025	ND	1.96	98.2	2.00	13.3		
Ethylbenzene*	<0.050	0.050	06/12/2025	ND	2.00	99.8	2.00	11.3		
Total Xylenes*	<0.150	0.150	06/12/2025	ND	6.17	103	6.00	10.4		
Total BTEX	<0.300	0.300	06/12/2025	ND						

Surrogate: 4-Bromofluorobenzene (PID) 102 % 71.5-134

Chloride, SM4500CI-B		mg/kg		Analyzed By: HM						
Analyte	Result	Reporting Limit	Analyzed	Method Blank	BS	% Recovery	True Value QC	RPD	Qualifier	
Chloride	96.0	16.0	06/12/2025	ND	432	108	400	3.64		

TPH 8015M		mg/kg		Analyzed By: MS					
Analyte	Result	Reporting Limit	Analyzed	Method Blank	BS	% Recovery	True Value QC	RPD	Qualifier
GRO C6-C10*	<10.0	10.0	06/12/2025	ND	229	115	200	0.385	
DRO >C10-C28*	<10.0	10.0	06/12/2025	ND	206	103	200	3.64	
EXT DRO >C28-C36	<10.0	10.0	06/12/2025	ND					

Surrogate: 1-Chlorooctane 100 % 44.4-145

Surrogate: 1-Chlorooctadecane 96.2 % 40.6-153

Cardinal Laboratories

*=Accredited Analyte

PLEASE NOTE: Liability and Damages. Cardinal's liability and client's exclusive remedy for any claim arising, whether based in contract or tort, shall be limited to the amount paid by client for analyses. All claims, including those for negligence and any other cause whatsoever shall be deemed waived unless made in writing and received by Cardinal within thirty (30) days after completion of the applicable service. In no event shall Cardinal be liable for incidental or consequential damages, including, without limitation, business interruptions, loss of use, or loss of profits incurred by client, its subsidiaries, affiliates or successors arising out of or related to the performance of the services hereunder by Cardinal, regardless of whether such claim is based upon any of the above stated reasons or otherwise. Results relate only to the samples identified above. This report shall not be reproduced except in full with written approval of Cardinal Laboratories.

Mike Snyder For Celey D. Keene, Lab Director/Quality Manager



PHONE (575) 393-2326 ° 101 E. MARLAND ° HOBBS, NM 88240

Analytical Results For:

TETRA TECH
 CHUCK TERHUNE
 901 WEST WALL STREET , STE 100
 MIDLAND TX, 79701
 Fax To: (432) 682-3946

Received: 06/12/2025
 Reported: 06/13/2025
 Project Name: STATE F1 #026
 Project Number: 212C-MD-03883
 Project Location: LEA CO NM

Sampling Date: 06/11/2025
 Sampling Type: Soil
 Sampling Condition: Cool & Intact
 Sample Received By: Alyssa Parras

Sample ID: BH - 4 4' (H253482-04)

BTEX 8021B		mg/kg		Analyzed By: JH						
Analyte	Result	Reporting Limit	Analyzed	Method Blank	BS	% Recovery	True Value QC	RPD	Qualifier	
Benzene*	<0.050	0.050	06/12/2025	ND	2.13	107	2.00	12.7		
Toluene*	<0.050	0.050	06/12/2025	ND	1.96	98.2	2.00	13.3		
Ethylbenzene*	<0.050	0.050	06/12/2025	ND	2.00	99.8	2.00	11.3		
Total Xylenes*	<0.150	0.150	06/12/2025	ND	6.17	103	6.00	10.4		
Total BTEX	<0.300	0.300	06/12/2025	ND						

Surrogate: 4-Bromofluorobenzene (PID) 101 % 71.5-134

Chloride, SM4500CI-B		mg/kg		Analyzed By: HM						
Analyte	Result	Reporting Limit	Analyzed	Method Blank	BS	% Recovery	True Value QC	RPD	Qualifier	
Chloride	784	16.0	06/12/2025	ND	432	108	400	3.64		

TPH 8015M		mg/kg		Analyzed By: MS					
Analyte	Result	Reporting Limit	Analyzed	Method Blank	BS	% Recovery	True Value QC	RPD	Qualifier
GRO C6-C10*	<10.0	10.0	06/12/2025	ND	229	115	200	0.385	
DRO >C10-C28*	<10.0	10.0	06/12/2025	ND	206	103	200	3.64	
EXT DRO >C28-C36	<10.0	10.0	06/12/2025	ND					

Surrogate: 1-Chlorooctane 105 % 44.4-145

Surrogate: 1-Chlorooctadecane 100 % 40.6-153

Cardinal Laboratories

*=Accredited Analyte

PLEASE NOTE: Liability and Damages. Cardinal's liability and client's exclusive remedy for any claim arising, whether based in contract or tort, shall be limited to the amount paid by client for analyses. All claims, including those for negligence and any other cause whatsoever shall be deemed waived unless made in writing and received by Cardinal within thirty (30) days after completion of the applicable service. In no event shall Cardinal be liable for incidental or consequential damages, including, without limitation, business interruptions, loss of use, or loss of profits incurred by client, its subsidiaries, affiliates or successors arising out of or related to the performance of the services hereunder by Cardinal, regardless of whether such claim is based upon any of the above stated reasons or otherwise. Results relate only to the samples identified above. This report shall not be reproduced except in full with written approval of Cardinal Laboratories.

Mike Snyder For Celey D. Keene, Lab Director/Quality Manager



PHONE (575) 393-2326 ° 101 E. MARLAND ° HOBBS, NM 88240

Analytical Results For:

TETRA TECH
 CHUCK TERHUNE
 901 WEST WALL STREET , STE 100
 MIDLAND TX, 79701
 Fax To: (432) 682-3946

Received: 06/12/2025
 Reported: 06/13/2025
 Project Name: STATE F1 #026
 Project Number: 212C-MD-03883
 Project Location: LEA CO NM

Sampling Date: 06/11/2025
 Sampling Type: Soil
 Sampling Condition: Cool & Intact
 Sample Received By: Alyssa Parras

Sample ID: BH - 5 4' (H253482-05)

BTEx 8021B		mg/kg		Analyzed By: JH					
Analyte	Result	Reporting Limit	Analyzed	Method Blank	BS	% Recovery	True Value QC	RPD	Qualifier
Benzene*	<0.050	0.050	06/12/2025	ND	2.13	107	2.00	12.7	
Toluene*	<0.050	0.050	06/12/2025	ND	1.96	98.2	2.00	13.3	
Ethylbenzene*	<0.050	0.050	06/12/2025	ND	2.00	99.8	2.00	11.3	
Total Xylenes*	<0.150	0.150	06/12/2025	ND	6.17	103	6.00	10.4	
Total BTEX	<0.300	0.300	06/12/2025	ND					

Surrogate: 4-Bromofluorobenzene (PID) 102 % 71.5-134

Chloride, SM4500Cl-B		mg/kg		Analyzed By: HM						
Analyte	Result	Reporting Limit	Analyzed	Method Blank	BS	% Recovery	True Value QC	RPD	Qualifier	
Chloride	1040	16.0	06/12/2025	ND	432	108	400	3.64		

TPH 8015M		mg/kg		Analyzed By: MS					
Analyte	Result	Reporting Limit	Analyzed	Method Blank	BS	% Recovery	True Value QC	RPD	Qualifier
GRO C6-C10*	<10.0	10.0	06/12/2025	ND	200	100	200	1.62	
DRO >C10-C28*	<10.0	10.0	06/12/2025	ND	210	105	200	2.57	
EXT DRO >C28-C36	<10.0	10.0	06/12/2025	ND					

Surrogate: 1-Chlorooctane 77.5 % 44.4-145

Surrogate: 1-Chlorooctadecane 77.6 % 40.6-153

Cardinal Laboratories

*=Accredited Analyte

PLEASE NOTE: Liability and Damages. Cardinal's liability and client's exclusive remedy for any claim arising, whether based in contract or tort, shall be limited to the amount paid by client for analyses. All claims, including those for negligence and any other cause whatsoever shall be deemed waived unless made in writing and received by Cardinal within thirty (30) days after completion of the applicable service. In no event shall Cardinal be liable for incidental or consequential damages, including, without limitation, business interruptions, loss of use, or loss of profits incurred by client, its subsidiaries, affiliates or successors arising out of or related to the performance of the services hereunder by Cardinal, regardless of whether such claim is based upon any of the above stated reasons or otherwise. Results relate only to the samples identified above. This report shall not be reproduced except in full with written approval of Cardinal Laboratories.

Mike Snyder For Celey D. Keene, Lab Director/Quality Manager



PHONE (575) 393-2326 ° 101 E. MARLAND ° HOBBS, NM 88240

Analytical Results For:

TETRA TECH
 CHUCK TERHUNE
 901 WEST WALL STREET , STE 100
 MIDLAND TX, 79701
 Fax To: (432) 682-3946

Received: 06/12/2025
 Reported: 06/13/2025
 Project Name: STATE F1 #026
 Project Number: 212C-MD-03883
 Project Location: LEA CO NM

Sampling Date: 06/11/2025
 Sampling Type: Soil
 Sampling Condition: Cool & Intact
 Sample Received By: Alyssa Parras

Sample ID: BH - 6 4' (H253482-06)

BTEx 8021B		mg/kg		Analyzed By: JH					
Analyte	Result	Reporting Limit	Analyzed	Method Blank	BS	% Recovery	True Value QC	RPD	Qualifier
Benzene*	<0.050	0.050	06/12/2025	ND	2.13	107	2.00	12.7	
Toluene*	<0.050	0.050	06/12/2025	ND	1.96	98.2	2.00	13.3	
Ethylbenzene*	<0.050	0.050	06/12/2025	ND	2.00	99.8	2.00	11.3	
Total Xylenes*	<0.150	0.150	06/12/2025	ND	6.17	103	6.00	10.4	
Total BTEX	<0.300	0.300	06/12/2025	ND					

Surrogate: 4-Bromofluorobenzene (PID) 98.6 % 71.5-134

Chloride, SM4500Cl-B		mg/kg		Analyzed By: AC						
Analyte	Result	Reporting Limit	Analyzed	Method Blank	BS	% Recovery	True Value QC	RPD	Qualifier	
Chloride	880	16.0	06/12/2025	ND	432	108	400	0.00		

TPH 8015M		mg/kg		Analyzed By: MS					
Analyte	Result	Reporting Limit	Analyzed	Method Blank	BS	% Recovery	True Value QC	RPD	Qualifier
GRO C6-C10*	<10.0	10.0	06/12/2025	ND	200	100	200	1.62	
DRO >C10-C28*	<10.0	10.0	06/12/2025	ND	210	105	200	2.57	
EXT DRO >C28-C36	<10.0	10.0	06/12/2025	ND					

Surrogate: 1-Chlorooctane 91.0 % 44.4-145

Surrogate: 1-Chlorooctadecane 90.5 % 40.6-153

Cardinal Laboratories

*=Accredited Analyte

PLEASE NOTE: Liability and Damages. Cardinal's liability and client's exclusive remedy for any claim arising, whether based in contract or tort, shall be limited to the amount paid by client for analyses. All claims, including those for negligence and any other cause whatsoever shall be deemed waived unless made in writing and received by Cardinal within thirty (30) days after completion of the applicable service. In no event shall Cardinal be liable for incidental or consequential damages, including, without limitation, business interruptions, loss of use, or loss of profits incurred by client, its subsidiaries, affiliates or successors arising out of or related to the performance of the services hereunder by Cardinal, regardless of whether such claim is based upon any of the above stated reasons or otherwise. Results relate only to the samples identified above. This report shall not be reproduced except in full with written approval of Cardinal Laboratories.

Mike Snyder For Celey D. Keene, Lab Director/Quality Manager



PHONE (575) 393-2326 ° 101 E. MARLAND ° HOBBS, NM 88240

Analytical Results For:

TETRA TECH
 CHUCK TERHUNE
 901 WEST WALL STREET , STE 100
 MIDLAND TX, 79701
 Fax To: (432) 682-3946

Received: 06/12/2025
 Reported: 06/13/2025
 Project Name: STATE F1 #026
 Project Number: 212C-MD-03883
 Project Location: LEA CO NM

Sampling Date: 06/11/2025
 Sampling Type: Soil
 Sampling Condition: Cool & Intact
 Sample Received By: Alyssa Parras

Sample ID: BH - 7 4' (H253482-07)

BTEx 8021B		mg/kg		Analyzed By: JH						
Analyte	Result	Reporting Limit	Analyzed	Method Blank	BS	% Recovery	True Value QC	RPD	Qualifier	
Benzene*	<0.050	0.050	06/12/2025	ND	2.13	107	2.00	12.7		
Toluene*	<0.050	0.050	06/12/2025	ND	1.96	98.2	2.00	13.3		
Ethylbenzene*	<0.050	0.050	06/12/2025	ND	2.00	99.8	2.00	11.3		
Total Xylenes*	<0.150	0.150	06/12/2025	ND	6.17	103	6.00	10.4		
Total BTEx	<0.300	0.300	06/12/2025	ND						

Surrogate: 4-Bromofluorobenzene (PID) 100 % 71.5-134

Chloride, SM4500CI-B		mg/kg		Analyzed By: AC						
Analyte	Result	Reporting Limit	Analyzed	Method Blank	BS	% Recovery	True Value QC	RPD	Qualifier	
Chloride	752	16.0	06/12/2025	ND	432	108	400	0.00		

TPH 8015M		mg/kg		Analyzed By: MS					
Analyte	Result	Reporting Limit	Analyzed	Method Blank	BS	% Recovery	True Value QC	RPD	Qualifier
GRO C6-C10*	<10.0	10.0	06/12/2025	ND	200	100	200	1.62	
DRO >C10-C28*	<10.0	10.0	06/12/2025	ND	210	105	200	2.57	
EXT DRO >C28-C36	<10.0	10.0	06/12/2025	ND					

Surrogate: 1-Chlorooctane 94.3 % 44.4-145

Surrogate: 1-Chlorooctadecane 102 % 40.6-153

Cardinal Laboratories

*=Accredited Analyte

PLEASE NOTE: Liability and Damages. Cardinal's liability and client's exclusive remedy for any claim arising, whether based in contract or tort, shall be limited to the amount paid by client for analyses. All claims, including those for negligence and any other cause whatsoever shall be deemed waived unless made in writing and received by Cardinal within thirty (30) days after completion of the applicable service. In no event shall Cardinal be liable for incidental or consequential damages, including, without limitation, business interruptions, loss of use, or loss of profits incurred by client, its subsidiaries, affiliates or successors arising out of or related to the performance of the services hereunder by Cardinal, regardless of whether such claim is based upon any of the above stated reasons or otherwise. Results relate only to the samples identified above. This report shall not be reproduced except in full with written approval of Cardinal Laboratories.

Mike Snyder For Celey D. Keene, Lab Director/Quality Manager



PHONE (575) 393-2326 ° 101 E. MARLAND ° HOBBS, NM 88240

Analytical Results For:

TETRA TECH
 CHUCK TERHUNE
 901 WEST WALL STREET , STE 100
 MIDLAND TX, 79701
 Fax To: (432) 682-3946

Received: 06/12/2025
 Reported: 06/13/2025
 Project Name: STATE F1 #026
 Project Number: 212C-MD-03883
 Project Location: LEA CO NM

Sampling Date: 06/11/2025
 Sampling Type: Soil
 Sampling Condition: Cool & Intact
 Sample Received By: Alyssa Parras

Sample ID: BH - 8 4' (H253482-08)

BTEX 8021B		mg/kg		Analyzed By: JH						
Analyte	Result	Reporting Limit	Analyzed	Method Blank	BS	% Recovery	True Value QC	RPD	Qualifier	
Benzene*	<0.050	0.050	06/12/2025	ND	2.13	107	2.00	12.7		
Toluene*	<0.050	0.050	06/12/2025	ND	1.96	98.2	2.00	13.3		
Ethylbenzene*	<0.050	0.050	06/12/2025	ND	2.00	99.8	2.00	11.3		
Total Xylenes*	<0.150	0.150	06/12/2025	ND	6.17	103	6.00	10.4		
Total BTEX	<0.300	0.300	06/12/2025	ND						

Surrogate: 4-Bromofluorobenzene (PID) 101 % 71.5-134

Chloride, SM4500CI-B		mg/kg		Analyzed By: AC						
Analyte	Result	Reporting Limit	Analyzed	Method Blank	BS	% Recovery	True Value QC	RPD	Qualifier	
Chloride	1580	16.0	06/12/2025	ND	432	108	400	0.00		

TPH 8015M		mg/kg		Analyzed By: MS					
Analyte	Result	Reporting Limit	Analyzed	Method Blank	BS	% Recovery	True Value QC	RPD	Qualifier
GRO C6-C10*	<10.0	10.0	06/12/2025	ND	200	100	200	1.62	
DRO >C10-C28*	<10.0	10.0	06/12/2025	ND	210	105	200	2.57	
EXT DRO >C28-C36	<10.0	10.0	06/12/2025	ND					

Surrogate: 1-Chlorooctane 92.1 % 44.4-145

Surrogate: 1-Chlorooctadecane 91.1 % 40.6-153

Cardinal Laboratories

*=Accredited Analyte

PLEASE NOTE: Liability and Damages. Cardinal's liability and client's exclusive remedy for any claim arising, whether based in contract or tort, shall be limited to the amount paid by client for analyses. All claims, including those for negligence and any other cause whatsoever shall be deemed waived unless made in writing and received by Cardinal within thirty (30) days after completion of the applicable service. In no event shall Cardinal be liable for incidental or consequential damages, including, without limitation, business interruptions, loss of use, or loss of profits incurred by client, its subsidiaries, affiliates or successors arising out of or related to the performance of the services hereunder by Cardinal, regardless of whether such claim is based upon any of the above stated reasons or otherwise. Results relate only to the samples identified above. This report shall not be reproduced except in full with written approval of Cardinal Laboratories.

Mike Snyder For Celey D. Keene, Lab Director/Quality Manager



PHONE (575) 393-2326 ° 101 E. MARLAND ° HOBBS, NM 88240

Analytical Results For:

TETRA TECH
 CHUCK TERHUNE
 901 WEST WALL STREET , STE 100
 MIDLAND TX, 79701
 Fax To: (432) 682-3946

Received: 06/12/2025
 Reported: 06/13/2025
 Project Name: STATE F1 #026
 Project Number: 212C-MD-03883
 Project Location: LEA CO NM

Sampling Date: 06/11/2025
 Sampling Type: Soil
 Sampling Condition: Cool & Intact
 Sample Received By: Alyssa Parras

Sample ID: BH - 9 4' (H253482-09)

BTEx 8021B		mg/kg		Analyzed By: JH						
Analyte	Result	Reporting Limit	Analyzed	Method Blank	BS	% Recovery	True Value QC	RPD	Qualifier	
Benzene*	<0.050	0.050	06/12/2025	ND	2.13	107	2.00	12.7		
Toluene*	<0.050	0.050	06/12/2025	ND	1.96	98.2	2.00	13.3		
Ethylbenzene*	<0.050	0.050	06/12/2025	ND	2.00	99.8	2.00	11.3		
Total Xylenes*	<0.150	0.150	06/12/2025	ND	6.17	103	6.00	10.4		
Total BTEX	<0.300	0.300	06/12/2025	ND						

Surrogate: 4-Bromofluorobenzene (PID) 103 % 71.5-134

Chloride, SM4500Cl-B		mg/kg		Analyzed By: AC						
Analyte	Result	Reporting Limit	Analyzed	Method Blank	BS	% Recovery	True Value QC	RPD	Qualifier	
Chloride	544	16.0	06/12/2025	ND	432	108	400	0.00		

TPH 8015M		mg/kg		Analyzed By: MS					
Analyte	Result	Reporting Limit	Analyzed	Method Blank	BS	% Recovery	True Value QC	RPD	Qualifier
GRO C6-C10*	<10.0	10.0	06/12/2025	ND	200	100	200	1.62	
DRO >C10-C28*	<10.0	10.0	06/12/2025	ND	210	105	200	2.57	
EXT DRO >C28-C36	<10.0	10.0	06/12/2025	ND					

Surrogate: 1-Chlorooctane 85.2 % 44.4-145

Surrogate: 1-Chlorooctadecane 83.5 % 40.6-153

Cardinal Laboratories

*=Accredited Analyte

PLEASE NOTE: Liability and Damages. Cardinal's liability and client's exclusive remedy for any claim arising, whether based in contract or tort, shall be limited to the amount paid by client for analyses. All claims, including those for negligence and any other cause whatsoever shall be deemed waived unless made in writing and received by Cardinal within thirty (30) days after completion of the applicable service. In no event shall Cardinal be liable for incidental or consequential damages, including, without limitation, business interruptions, loss of use, or loss of profits incurred by client, its subsidiaries, affiliates or successors arising out of or related to the performance of the services hereunder by Cardinal, regardless of whether such claim is based upon any of the above stated reasons or otherwise. Results relate only to the samples identified above. This report shall not be reproduced except in full with written approval of Cardinal Laboratories.

Mike Snyder For Celey D. Keene, Lab Director/Quality Manager



PHONE (575) 393-2326 ° 101 E. MARLAND ° HOBBS, NM 88240

Analytical Results For:

TETRA TECH
 CHUCK TERHUNE
 901 WEST WALL STREET , STE 100
 MIDLAND TX, 79701
 Fax To: (432) 682-3946

Received: 06/12/2025
 Reported: 06/13/2025
 Project Name: STATE F1 #026
 Project Number: 212C-MD-03883
 Project Location: LEA CO NM

Sampling Date: 06/11/2025
 Sampling Type: Soil
 Sampling Condition: Cool & Intact
 Sample Received By: Alyssa Parras

Sample ID: BH - 10 4' (H253482-10)

BTEx 8021B		mg/kg		Analyzed By: JH						
Analyte	Result	Reporting Limit	Analyzed	Method Blank	BS	% Recovery	True Value QC	RPD	Qualifier	
Benzene*	<0.050	0.050	06/12/2025	ND	2.13	107	2.00	12.7		
Toluene*	<0.050	0.050	06/12/2025	ND	1.96	98.2	2.00	13.3		
Ethylbenzene*	<0.050	0.050	06/12/2025	ND	2.00	99.8	2.00	11.3		
Total Xylenes*	<0.150	0.150	06/12/2025	ND	6.17	103	6.00	10.4		
Total BTEX	<0.300	0.300	06/12/2025	ND						

Surrogate: 4-Bromofluorobenzene (PID) 99.7 % 71.5-134

Chloride, SM4500Cl-B		mg/kg		Analyzed By: AC					
Analyte	Result	Reporting Limit	Analyzed	Method Blank	BS	% Recovery	True Value QC	RPD	Qualifier
Chloride	464	16.0	06/12/2025	ND	432	108	400	0.00	

TPH 8015M		mg/kg		Analyzed By: MS					
Analyte	Result	Reporting Limit	Analyzed	Method Blank	BS	% Recovery	True Value QC	RPD	Qualifier
GRO C6-C10*	<10.0	10.0	06/12/2025	ND	200	100	200	1.62	
DRO >C10-C28*	<10.0	10.0	06/12/2025	ND	210	105	200	2.57	
EXT DRO >C28-C36	<10.0	10.0	06/12/2025	ND					

Surrogate: 1-Chlorooctane 88.9 % 44.4-145

Surrogate: 1-Chlorooctadecane 88.6 % 40.6-153

Cardinal Laboratories

*=Accredited Analyte

PLEASE NOTE: Liability and Damages. Cardinal's liability and client's exclusive remedy for any claim arising, whether based in contract or tort, shall be limited to the amount paid by client for analyses. All claims, including those for negligence and any other cause whatsoever shall be deemed waived unless made in writing and received by Cardinal within thirty (30) days after completion of the applicable service. In no event shall Cardinal be liable for incidental or consequential damages, including, without limitation, business interruptions, loss of use, or loss of profits incurred by client, its subsidiaries, affiliates or successors arising out of or related to the performance of the services hereunder by Cardinal, regardless of whether such claim is based upon any of the above stated reasons or otherwise. Results relate only to the samples identified above. This report shall not be reproduced except in full with written approval of Cardinal Laboratories.

Mike Snyder For Celey D. Keene, Lab Director/Quality Manager



PHONE (575) 393-2326 ° 101 E. MARLAND ° HOBBS, NM 88240

Analytical Results For:

TETRA TECH
 CHUCK TERHUNE
 901 WEST WALL STREET , STE 100
 MIDLAND TX, 79701
 Fax To: (432) 682-3946

Received: 06/12/2025
 Reported: 06/13/2025
 Project Name: STATE F1 #026
 Project Number: 212C-MD-03883
 Project Location: LEA CO NM

Sampling Date: 06/11/2025
 Sampling Type: Soil
 Sampling Condition: Cool & Intact
 Sample Received By: Alyssa Parras

Sample ID: BH - 11 4' (H253482-11)

BTEx 8021B		mg/kg		Analyzed By: JH						
Analyte	Result	Reporting Limit	Analyzed	Method Blank	BS	% Recovery	True Value QC	RPD	Qualifier	
Benzene*	<0.050	0.050	06/12/2025	ND	2.00	99.8	2.00	7.59		
Toluene*	<0.050	0.050	06/12/2025	ND	2.06	103	2.00	5.66		
Ethylbenzene*	<0.050	0.050	06/12/2025	ND	2.08	104	2.00	4.70		
Total Xylenes*	<0.150	0.150	06/12/2025	ND	6.22	104	6.00	4.37		
Total BTEX	<0.300	0.300	06/12/2025	ND						

Surrogate: 4-Bromofluorobenzene (PID) 115 % 71.5-134

Chloride, SM4500Cl-B		mg/kg		Analyzed By: AC					
Analyte	Result	Reporting Limit	Analyzed	Method Blank	BS	% Recovery	True Value QC	RPD	Qualifier
Chloride	912	16.0	06/12/2025	ND	432	108	400	0.00	

TPH 8015M		mg/kg		Analyzed By: MS					
Analyte	Result	Reporting Limit	Analyzed	Method Blank	BS	% Recovery	True Value QC	RPD	Qualifier
GRO C6-C10*	<10.0	10.0	06/12/2025	ND	200	100	200	1.62	
DRO >C10-C28*	<10.0	10.0	06/12/2025	ND	210	105	200	2.57	
EXT DRO >C28-C36	<10.0	10.0	06/12/2025	ND					

Surrogate: 1-Chlorooctane 86.4 % 44.4-145

Surrogate: 1-Chlorooctadecane 85.6 % 40.6-153

Cardinal Laboratories

*=Accredited Analyte

PLEASE NOTE: Liability and Damages. Cardinal's liability and client's exclusive remedy for any claim arising, whether based in contract or tort, shall be limited to the amount paid by client for analyses. All claims, including those for negligence and any other cause whatsoever shall be deemed waived unless made in writing and received by Cardinal within thirty (30) days after completion of the applicable service. In no event shall Cardinal be liable for incidental or consequential damages, including, without limitation, business interruptions, loss of use, or loss of profits incurred by client, its subsidiaries, affiliates or successors arising out of or related to the performance of the services hereunder by Cardinal, regardless of whether such claim is based upon any of the above stated reasons or otherwise. Results relate only to the samples identified above. This report shall not be reproduced except in full with written approval of Cardinal Laboratories.

Mike Snyder For Celey D. Keene, Lab Director/Quality Manager



PHONE (575) 393-2326 ° 101 E. MARLAND ° HOBBS, NM 88240

Analytical Results For:

TETRA TECH
 CHUCK TERHUNE
 901 WEST WALL STREET , STE 100
 MIDLAND TX, 79701
 Fax To: (432) 682-3946

Received: 06/12/2025
 Reported: 06/13/2025
 Project Name: STATE F1 #026
 Project Number: 212C-MD-03883
 Project Location: LEA CO NM

Sampling Date: 06/11/2025
 Sampling Type: Soil
 Sampling Condition: Cool & Intact
 Sample Received By: Alyssa Parras

Sample ID: BH - 12 4' (H253482-12)

BTEx 8021B		mg/kg		Analyzed By: JH						
Analyte	Result	Reporting Limit	Analyzed	Method Blank	BS	% Recovery	True Value QC	RPD	Qualifier	
Benzene*	<0.050	0.050	06/12/2025	ND	2.00	99.8	2.00	7.59		
Toluene*	<0.050	0.050	06/12/2025	ND	2.06	103	2.00	5.66		
Ethylbenzene*	<0.050	0.050	06/12/2025	ND	2.08	104	2.00	4.70		
Total Xylenes*	<0.150	0.150	06/12/2025	ND	6.22	104	6.00	4.37		
Total BTEX	<0.300	0.300	06/12/2025	ND						

Surrogate: 4-Bromofluorobenzene (PID) 114 % 71.5-134

Chloride, SM4500Cl-B		mg/kg		Analyzed By: AC						
Analyte	Result	Reporting Limit	Analyzed	Method Blank	BS	% Recovery	True Value QC	RPD	Qualifier	
Chloride	416	16.0	06/12/2025	ND	432	108	400	0.00		

TPH 8015M		mg/kg		Analyzed By: MS					
Analyte	Result	Reporting Limit	Analyzed	Method Blank	BS	% Recovery	True Value QC	RPD	Qualifier
GRO C6-C10*	<10.0	10.0	06/12/2025	ND	200	100	200	1.62	
DRO >C10-C28*	<10.0	10.0	06/12/2025	ND	210	105	200	2.57	
EXT DRO >C28-C36	<10.0	10.0	06/12/2025	ND					

Surrogate: 1-Chlorooctane 85.2 % 44.4-145

Surrogate: 1-Chlorooctadecane 83.8 % 40.6-153

Cardinal Laboratories

*=Accredited Analyte

PLEASE NOTE: Liability and Damages. Cardinal's liability and client's exclusive remedy for any claim arising, whether based in contract or tort, shall be limited to the amount paid by client for analyses. All claims, including those for negligence and any other cause whatsoever shall be deemed waived unless made in writing and received by Cardinal within thirty (30) days after completion of the applicable service. In no event shall Cardinal be liable for incidental or consequential damages, including, without limitation, business interruptions, loss of use, or loss of profits incurred by client, its subsidiaries, affiliates or successors arising out of or related to the performance of the services hereunder by Cardinal, regardless of whether such claim is based upon any of the above stated reasons or otherwise. Results relate only to the samples identified above. This report shall not be reproduced except in full with written approval of Cardinal Laboratories.

Mike Snyder For Celey D. Keene, Lab Director/Quality Manager



PHONE (575) 393-2326 ° 101 E. MARLAND ° HOBBS, NM 88240

Analytical Results For:

TETRA TECH
 CHUCK TERHUNE
 901 WEST WALL STREET , STE 100
 MIDLAND TX, 79701
 Fax To: (432) 682-3946

Received: 06/12/2025
 Reported: 06/13/2025
 Project Name: STATE F1 #026
 Project Number: 212C-MD-03883
 Project Location: LEA CO NM

Sampling Date: 06/11/2025
 Sampling Type: Soil
 Sampling Condition: Cool & Intact
 Sample Received By: Alyssa Parras

Sample ID: BH - 13 4' (H253482-13)

BTEx 8021B		mg/kg		Analyzed By: JH						
Analyte	Result	Reporting Limit	Analyzed	Method Blank	BS	% Recovery	True Value QC	RPD	Qualifier	
Benzene*	<0.050	0.050	06/12/2025	ND	2.00	99.8	2.00	7.59		
Toluene*	<0.050	0.050	06/12/2025	ND	2.06	103	2.00	5.66		
Ethylbenzene*	<0.050	0.050	06/12/2025	ND	2.08	104	2.00	4.70		
Total Xylenes*	<0.150	0.150	06/12/2025	ND	6.22	104	6.00	4.37		
Total BTEX	<0.300	0.300	06/12/2025	ND						

Surrogate: 4-Bromofluorobenzene (PID) 114 % 71.5-134

Chloride, SM4500Cl-B		mg/kg		Analyzed By: AC						
Analyte	Result	Reporting Limit	Analyzed	Method Blank	BS	% Recovery	True Value QC	RPD	Qualifier	
Chloride	1170	16.0	06/12/2025	ND	432	108	400	0.00		

TPH 8015M		mg/kg		Analyzed By: MS					
Analyte	Result	Reporting Limit	Analyzed	Method Blank	BS	% Recovery	True Value QC	RPD	Qualifier
GRO C6-C10*	<10.0	10.0	06/12/2025	ND	200	100	200	1.62	
DRO >C10-C28*	<10.0	10.0	06/12/2025	ND	210	105	200	2.57	
EXT DRO >C28-C36	<10.0	10.0	06/12/2025	ND					

Surrogate: 1-Chlorooctane 94.8 % 44.4-145

Surrogate: 1-Chlorooctadecane 94.5 % 40.6-153

Cardinal Laboratories

*=Accredited Analyte

PLEASE NOTE: Liability and Damages. Cardinal's liability and client's exclusive remedy for any claim arising, whether based in contract or tort, shall be limited to the amount paid by client for analyses. All claims, including those for negligence and any other cause whatsoever shall be deemed waived unless made in writing and received by Cardinal within thirty (30) days after completion of the applicable service. In no event shall Cardinal be liable for incidental or consequential damages, including, without limitation, business interruptions, loss of use, or loss of profits incurred by client, its subsidiaries, affiliates or successors arising out of or related to the performance of the services hereunder by Cardinal, regardless of whether such claim is based upon any of the above stated reasons or otherwise. Results relate only to the samples identified above. This report shall not be reproduced except in full with written approval of Cardinal Laboratories.

Mike Snyder For Celey D. Keene, Lab Director/Quality Manager



PHONE (575) 393-2326 ° 101 E. MARLAND ° HOBBS, NM 88240

Analytical Results For:

TETRA TECH
 CHUCK TERHUNE
 901 WEST WALL STREET , STE 100
 MIDLAND TX, 79701
 Fax To: (432) 682-3946

Received: 06/12/2025
 Reported: 06/13/2025
 Project Name: STATE F1 #026
 Project Number: 212C-MD-03883
 Project Location: LEA CO NM

Sampling Date: 06/11/2025
 Sampling Type: Soil
 Sampling Condition: Cool & Intact
 Sample Received By: Alyssa Parras

Sample ID: BH - 14 4' (H253482-14)

BTEx 8021B		mg/kg		Analyzed By: JH						
Analyte	Result	Reporting Limit	Analyzed	Method Blank	BS	% Recovery	True Value QC	RPD	Qualifier	
Benzene*	<0.050	0.050	06/12/2025	ND	2.00	99.8	2.00	7.59		
Toluene*	<0.050	0.050	06/12/2025	ND	2.06	103	2.00	5.66		
Ethylbenzene*	<0.050	0.050	06/12/2025	ND	2.08	104	2.00	4.70		
Total Xylenes*	<0.150	0.150	06/12/2025	ND	6.22	104	6.00	4.37		
Total BTEX	<0.300	0.300	06/12/2025	ND						

Surrogate: 4-Bromofluorobenzene (PID) 112 % 71.5-134

Chloride, SM4500Cl-B		mg/kg		Analyzed By: AC						
Analyte	Result	Reporting Limit	Analyzed	Method Blank	BS	% Recovery	True Value QC	RPD	Qualifier	
Chloride	544	16.0	06/12/2025	ND	432	108	400	0.00		

TPH 8015M		mg/kg		Analyzed By: MS					
Analyte	Result	Reporting Limit	Analyzed	Method Blank	BS	% Recovery	True Value QC	RPD	Qualifier
GRO C6-C10*	<10.0	10.0	06/12/2025	ND	200	100	200	1.62	
DRO >C10-C28*	<10.0	10.0	06/12/2025	ND	210	105	200	2.57	
EXT DRO >C28-C36	<10.0	10.0	06/12/2025	ND					

Surrogate: 1-Chlorooctane 92.6 % 44.4-145

Surrogate: 1-Chlorooctadecane 92.0 % 40.6-153

Cardinal Laboratories

*=Accredited Analyte

PLEASE NOTE: Liability and Damages. Cardinal's liability and client's exclusive remedy for any claim arising, whether based in contract or tort, shall be limited to the amount paid by client for analyses. All claims, including those for negligence and any other cause whatsoever shall be deemed waived unless made in writing and received by Cardinal within thirty (30) days after completion of the applicable service. In no event shall Cardinal be liable for incidental or consequential damages, including, without limitation, business interruptions, loss of use, or loss of profits incurred by client, its subsidiaries, affiliates or successors arising out of or related to the performance of the services hereunder by Cardinal, regardless of whether such claim is based upon any of the above stated reasons or otherwise. Results relate only to the samples identified above. This report shall not be reproduced except in full with written approval of Cardinal Laboratories.

Mike Snyder For Celey D. Keene, Lab Director/Quality Manager



PHONE (575) 393-2326 ° 101 E. MARLAND ° HOBBS, NM 88240

Analytical Results For:

TETRA TECH
 CHUCK TERHUNE
 901 WEST WALL STREET , STE 100
 MIDLAND TX, 79701
 Fax To: (432) 682-3946

Received: 06/12/2025
 Reported: 06/13/2025
 Project Name: STATE F1 #026
 Project Number: 212C-MD-03883
 Project Location: LEA CO NM

Sampling Date: 06/11/2025
 Sampling Type: Soil
 Sampling Condition: Cool & Intact
 Sample Received By: Alyssa Parras

Sample ID: BH - 15 4' (H253482-15)

BTX 8021B		mg/kg		Analyzed By: JH						
Analyte	Result	Reporting Limit	Analyzed	Method Blank	BS	% Recovery	True Value QC	RPD	Qualifier	
Benzene*	<0.050	0.050	06/12/2025	ND	2.00	99.8	2.00	7.59		
Toluene*	<0.050	0.050	06/12/2025	ND	2.06	103	2.00	5.66		
Ethylbenzene*	<0.050	0.050	06/12/2025	ND	2.08	104	2.00	4.70		
Total Xylenes*	<0.150	0.150	06/12/2025	ND	6.22	104	6.00	4.37		
Total BTX	<0.300	0.300	06/12/2025	ND						

Surrogate: 4-Bromofluorobenzene (PID) 113 % 71.5-134

Chloride, SM4500CI-B		mg/kg		Analyzed By: AC					
Analyte	Result	Reporting Limit	Analyzed	Method Blank	BS	% Recovery	True Value QC	RPD	Qualifier
Chloride	320	16.0	06/12/2025	ND	432	108	400	0.00	

TPH 8015M		mg/kg		Analyzed By: MS					
Analyte	Result	Reporting Limit	Analyzed	Method Blank	BS	% Recovery	True Value QC	RPD	Qualifier
GRO C6-C10*	<10.0	10.0	06/12/2025	ND	200	100	200	1.62	
DRO >C10-C28*	<10.0	10.0	06/12/2025	ND	210	105	200	2.57	
EXT DRO >C28-C36	<10.0	10.0	06/12/2025	ND					

Surrogate: 1-Chlorooctane 78.5 % 44.4-145

Surrogate: 1-Chlorooctadecane 78.8 % 40.6-153

Cardinal Laboratories

*=Accredited Analyte

PLEASE NOTE: Liability and Damages. Cardinal's liability and client's exclusive remedy for any claim arising, whether based in contract or tort, shall be limited to the amount paid by client for analyses. All claims, including those for negligence and any other cause whatsoever shall be deemed waived unless made in writing and received by Cardinal within thirty (30) days after completion of the applicable service. In no event shall Cardinal be liable for incidental or consequential damages, including, without limitation, business interruptions, loss of use, or loss of profits incurred by client, its subsidiaries, affiliates or successors arising out of or related to the performance of the services hereunder by Cardinal, regardless of whether such claim is based upon any of the above stated reasons or otherwise. Results relate only to the samples identified above. This report shall not be reproduced except in full with written approval of Cardinal Laboratories.

Mike Snyder For Celey D. Keene, Lab Director/Quality Manager



PHONE (575) 393-2326 ° 101 E. MARLAND ° HOBBS, NM 88240

Analytical Results For:

TETRA TECH
 CHUCK TERHUNE
 901 WEST WALL STREET , STE 100
 MIDLAND TX, 79701
 Fax To: (432) 682-3946

Received: 06/12/2025
 Reported: 06/13/2025
 Project Name: STATE F1 #026
 Project Number: 212C-MD-03883
 Project Location: LEA CO NM

Sampling Date: 06/11/2025
 Sampling Type: Soil
 Sampling Condition: Cool & Intact
 Sample Received By: Alyssa Parras

Sample ID: BH - 16 4' (H253482-16)

BTEX 8021B		mg/kg		Analyzed By: JH					
Analyte	Result	Reporting Limit	Analyzed	Method Blank	BS	% Recovery	True Value QC	RPD	Qualifier
Benzene*	<0.050	0.050	06/12/2025	ND	2.00	99.8	2.00	7.59	
Toluene*	<0.050	0.050	06/12/2025	ND	2.06	103	2.00	5.66	
Ethylbenzene*	<0.050	0.050	06/12/2025	ND	2.08	104	2.00	4.70	
Total Xylenes*	<0.150	0.150	06/12/2025	ND	6.22	104	6.00	4.37	
Total BTEX	<0.300	0.300	06/12/2025	ND					

Surrogate: 4-Bromofluorobenzene (PID) 116 % 71.5-134

Chloride, SM4500Cl-B		mg/kg		Analyzed By: AC					
Analyte	Result	Reporting Limit	Analyzed	Method Blank	BS	% Recovery	True Value QC	RPD	Qualifier
Chloride	1010	16.0	06/12/2025	ND	432	108	400	0.00	

TPH 8015M		mg/kg		Analyzed By: MS					
Analyte	Result	Reporting Limit	Analyzed	Method Blank	BS	% Recovery	True Value QC	RPD	Qualifier
GRO C6-C10*	<10.0	10.0	06/12/2025	ND	200	100	200	1.62	
DRO >C10-C28*	<10.0	10.0	06/12/2025	ND	210	105	200	2.57	
EXT DRO >C28-C36	<10.0	10.0	06/12/2025	ND					

Surrogate: 1-Chlorooctane 87.1 % 44.4-145

Surrogate: 1-Chlorooctadecane 87.1 % 40.6-153

Cardinal Laboratories

*=Accredited Analyte

PLEASE NOTE: Liability and Damages. Cardinal's liability and client's exclusive remedy for any claim arising, whether based in contract or tort, shall be limited to the amount paid by client for analyses. All claims, including those for negligence and any other cause whatsoever shall be deemed waived unless made in writing and received by Cardinal within thirty (30) days after completion of the applicable service. In no event shall Cardinal be liable for incidental or consequential damages, including, without limitation, business interruptions, loss of use, or loss of profits incurred by client, its subsidiaries, affiliates or successors arising out of or related to the performance of the services hereunder by Cardinal, regardless of whether such claim is based upon any of the above stated reasons or otherwise. Results relate only to the samples identified above. This report shall not be reproduced except in full with written approval of Cardinal Laboratories.

Mike Snyder For Celey D. Keene, Lab Director/Quality Manager



PHONE (575) 393-2326 ° 101 E. MARLAND ° HOBBS, NM 88240

Analytical Results For:

TETRA TECH
 CHUCK TERHUNE
 901 WEST WALL STREET , STE 100
 MIDLAND TX, 79701
 Fax To: (432) 682-3946

Received: 06/12/2025
 Reported: 06/13/2025
 Project Name: STATE F1 #026
 Project Number: 212C-MD-03883
 Project Location: LEA CO NM

Sampling Date: 06/11/2025
 Sampling Type: Soil
 Sampling Condition: Cool & Intact
 Sample Received By: Alyssa Parras

Sample ID: BH - 17 4' (H253482-17)

BTEx 8021B		mg/kg		Analyzed By: JH						
Analyte	Result	Reporting Limit	Analyzed	Method Blank	BS	% Recovery	True Value QC	RPD	Qualifier	
Benzene*	<0.050	0.050	06/12/2025	ND	2.00	99.8	2.00	7.59		
Toluene*	<0.050	0.050	06/12/2025	ND	2.06	103	2.00	5.66		
Ethylbenzene*	<0.050	0.050	06/12/2025	ND	2.08	104	2.00	4.70		
Total Xylenes*	<0.150	0.150	06/12/2025	ND	6.22	104	6.00	4.37		
Total BTEx	<0.300	0.300	06/12/2025	ND						

Surrogate: 4-Bromofluorobenzene (PID) 114 % 71.5-134

Chloride, SM4500CI-B		mg/kg		Analyzed By: AC					
Analyte	Result	Reporting Limit	Analyzed	Method Blank	BS	% Recovery	True Value QC	RPD	Qualifier
Chloride	464	16.0	06/12/2025	ND	432	108	400	0.00	

TPH 8015M		mg/kg		Analyzed By: MS					
Analyte	Result	Reporting Limit	Analyzed	Method Blank	BS	% Recovery	True Value QC	RPD	Qualifier
GRO C6-C10*	<10.0	10.0	06/12/2025	ND	200	100	200	1.62	
DRO >C10-C28*	<10.0	10.0	06/12/2025	ND	210	105	200	2.57	
EXT DRO >C28-C36	<10.0	10.0	06/12/2025	ND					

Surrogate: 1-Chlorooctane 92.5 % 44.4-145

Surrogate: 1-Chlorooctadecane 92.4 % 40.6-153

Cardinal Laboratories

*=Accredited Analyte

PLEASE NOTE: Liability and Damages. Cardinal's liability and client's exclusive remedy for any claim arising, whether based in contract or tort, shall be limited to the amount paid by client for analyses. All claims, including those for negligence and any other cause whatsoever shall be deemed waived unless made in writing and received by Cardinal within thirty (30) days after completion of the applicable service. In no event shall Cardinal be liable for incidental or consequential damages, including, without limitation, business interruptions, loss of use, or loss of profits incurred by client, its subsidiaries, affiliates or successors arising out of or related to the performance of the services hereunder by Cardinal, regardless of whether such claim is based upon any of the above stated reasons or otherwise. Results relate only to the samples identified above. This report shall not be reproduced except in full with written approval of Cardinal Laboratories.

Mike Snyder For Celey D. Keene, Lab Director/Quality Manager



PHONE (575) 393-2326 ° 101 E. MARLAND ° HOBBS, NM 88240

Analytical Results For:

TETRA TECH
 CHUCK TERHUNE
 901 WEST WALL STREET , STE 100
 MIDLAND TX, 79701
 Fax To: (432) 682-3946

Received: 06/12/2025
 Reported: 06/13/2025
 Project Name: STATE F1 #026
 Project Number: 212C-MD-03883
 Project Location: LEA CO NM

Sampling Date: 06/11/2025
 Sampling Type: Soil
 Sampling Condition: Cool & Intact
 Sample Received By: Alyssa Parras

Sample ID: BH - 18 4' (H253482-18)

BTEx 8021B		mg/kg		Analyzed By: JH					
Analyte	Result	Reporting Limit	Analyzed	Method Blank	BS	% Recovery	True Value QC	RPD	Qualifier
Benzene*	<0.050	0.050	06/12/2025	ND	2.00	99.8	2.00	7.59	
Toluene*	<0.050	0.050	06/12/2025	ND	2.06	103	2.00	5.66	
Ethylbenzene*	<0.050	0.050	06/12/2025	ND	2.08	104	2.00	4.70	
Total Xylenes*	<0.150	0.150	06/12/2025	ND	6.22	104	6.00	4.37	
Total BTEX	<0.300	0.300	06/12/2025	ND					

Surrogate: 4-Bromofluorobenzene (PID) 115 % 71.5-134

Chloride, SM4500Cl-B		mg/kg		Analyzed By: AC					
Analyte	Result	Reporting Limit	Analyzed	Method Blank	BS	% Recovery	True Value QC	RPD	Qualifier
Chloride	304	16.0	06/12/2025	ND	432	108	400	0.00	

TPH 8015M		mg/kg		Analyzed By: MS					
Analyte	Result	Reporting Limit	Analyzed	Method Blank	BS	% Recovery	True Value QC	RPD	Qualifier
GRO C6-C10*	<10.0	10.0	06/12/2025	ND	200	100	200	1.62	
DRO >C10-C28*	<10.0	10.0	06/12/2025	ND	210	105	200	2.57	
EXT DRO >C28-C36	<10.0	10.0	06/12/2025	ND					

Surrogate: 1-Chlorooctane 92.2 % 44.4-145

Surrogate: 1-Chlorooctadecane 92.5 % 40.6-153

Cardinal Laboratories

*=Accredited Analyte

PLEASE NOTE: Liability and Damages. Cardinal's liability and client's exclusive remedy for any claim arising, whether based in contract or tort, shall be limited to the amount paid by client for analyses. All claims, including those for negligence and any other cause whatsoever shall be deemed waived unless made in writing and received by Cardinal within thirty (30) days after completion of the applicable service. In no event shall Cardinal be liable for incidental or consequential damages, including, without limitation, business interruptions, loss of use, or loss of profits incurred by client, its subsidiaries, affiliates or successors arising out of or related to the performance of the services hereunder by Cardinal, regardless of whether such claim is based upon any of the above stated reasons or otherwise. Results relate only to the samples identified above. This report shall not be reproduced except in full with written approval of Cardinal Laboratories.

Mike Snyder For Celey D. Keene, Lab Director/Quality Manager



PHONE (575) 393-2326 ° 101 E. MARLAND ° HOBBS, NM 88240

Analytical Results For:

TETRA TECH
 CHUCK TERHUNE
 901 WEST WALL STREET , STE 100
 MIDLAND TX, 79701
 Fax To: (432) 682-3946

Received: 06/12/2025
 Reported: 06/13/2025
 Project Name: STATE F1 #026
 Project Number: 212C-MD-03883
 Project Location: LEA CO NM

Sampling Date: 06/11/2025
 Sampling Type: Soil
 Sampling Condition: Cool & Intact
 Sample Received By: Alyssa Parras

Sample ID: BH - 19 4' (H253482-19)

BTEx 8021B		mg/kg		Analyzed By: JH						
Analyte	Result	Reporting Limit	Analyzed	Method Blank	BS	% Recovery	True Value QC	RPD	Qualifier	
Benzene*	<0.050	0.050	06/12/2025	ND	2.00	99.8	2.00	7.59		
Toluene*	<0.050	0.050	06/12/2025	ND	2.06	103	2.00	5.66		
Ethylbenzene*	<0.050	0.050	06/12/2025	ND	2.08	104	2.00	4.70		
Total Xylenes*	<0.150	0.150	06/12/2025	ND	6.22	104	6.00	4.37		
Total BTEX	<0.300	0.300	06/12/2025	ND						

Surrogate: 4-Bromofluorobenzene (PID) 112 % 71.5-134

Chloride, SM4500Cl-B		mg/kg		Analyzed By: AC						
Analyte	Result	Reporting Limit	Analyzed	Method Blank	BS	% Recovery	True Value QC	RPD	Qualifier	
Chloride	944	16.0	06/12/2025	ND	432	108	400	0.00		

TPH 8015M		mg/kg		Analyzed By: MS					
Analyte	Result	Reporting Limit	Analyzed	Method Blank	BS	% Recovery	True Value QC	RPD	Qualifier
GRO C6-C10*	<10.0	10.0	06/12/2025	ND	200	100	200	1.62	
DRO >C10-C28*	<10.0	10.0	06/12/2025	ND	210	105	200	2.57	
EXT DRO >C28-C36	<10.0	10.0	06/12/2025	ND					

Surrogate: 1-Chlorooctane 93.6 % 44.4-145

Surrogate: 1-Chlorooctadecane 92.3 % 40.6-153

Cardinal Laboratories

*=Accredited Analyte

PLEASE NOTE: Liability and Damages. Cardinal's liability and client's exclusive remedy for any claim arising, whether based in contract or tort, shall be limited to the amount paid by client for analyses. All claims, including those for negligence and any other cause whatsoever shall be deemed waived unless made in writing and received by Cardinal within thirty (30) days after completion of the applicable service. In no event shall Cardinal be liable for incidental or consequential damages, including, without limitation, business interruptions, loss of use, or loss of profits incurred by client, its subsidiaries, affiliates or successors arising out of or related to the performance of the services hereunder by Cardinal, regardless of whether such claim is based upon any of the above stated reasons or otherwise. Results relate only to the samples identified above. This report shall not be reproduced except in full with written approval of Cardinal Laboratories.

Mike Snyder For Celey D. Keene, Lab Director/Quality Manager



PHONE (575) 393-2326 ° 101 E. MARLAND ° HOBBS, NM 88240

Analytical Results For:

TETRA TECH
 CHUCK TERHUNE
 901 WEST WALL STREET , STE 100
 MIDLAND TX, 79701
 Fax To: (432) 682-3946

Received: 06/12/2025
 Reported: 06/13/2025
 Project Name: STATE F1 #026
 Project Number: 212C-MD-03883
 Project Location: LEA CO NM

Sampling Date: 06/11/2025
 Sampling Type: Soil
 Sampling Condition: Cool & Intact
 Sample Received By: Alyssa Parras

Sample ID: BH - 20 4' (H253482-20)

BTEx 8021B		mg/kg		Analyzed By: JH						
Analyte	Result	Reporting Limit	Analyzed	Method Blank	BS	% Recovery	True Value QC	RPD	Qualifier	
Benzene*	<0.050	0.050	06/12/2025	ND	2.00	99.8	2.00	7.59		
Toluene*	<0.050	0.050	06/12/2025	ND	2.06	103	2.00	5.66		
Ethylbenzene*	<0.050	0.050	06/12/2025	ND	2.08	104	2.00	4.70		
Total Xylenes*	<0.150	0.150	06/12/2025	ND	6.22	104	6.00	4.37		
Total BTEX	<0.300	0.300	06/12/2025	ND						

Surrogate: 4-Bromofluorobenzene (PID) 114 % 71.5-134

Chloride, SM4500Cl-B		mg/kg		Analyzed By: AC					
Analyte	Result	Reporting Limit	Analyzed	Method Blank	BS	% Recovery	True Value QC	RPD	Qualifier
Chloride	1150	16.0	06/12/2025	ND	432	108	400	0.00	

TPH 8015M		mg/kg		Analyzed By: MS					
Analyte	Result	Reporting Limit	Analyzed	Method Blank	BS	% Recovery	True Value QC	RPD	Qualifier
GRO C6-C10*	<10.0	10.0	06/12/2025	ND	200	100	200	1.62	
DRO >C10-C28*	<10.0	10.0	06/12/2025	ND	210	105	200	2.57	
EXT DRO >C28-C36	<10.0	10.0	06/12/2025	ND					

Surrogate: 1-Chlorooctane 92.9 % 44.4-145

Surrogate: 1-Chlorooctadecane 92.4 % 40.6-153

Cardinal Laboratories

*=Accredited Analyte

PLEASE NOTE: Liability and Damages. Cardinal's liability and client's exclusive remedy for any claim arising, whether based in contract or tort, shall be limited to the amount paid by client for analyses. All claims, including those for negligence and any other cause whatsoever shall be deemed waived unless made in writing and received by Cardinal within thirty (30) days after completion of the applicable service. In no event shall Cardinal be liable for incidental or consequential damages, including, without limitation, business interruptions, loss of use, or loss of profits incurred by client, its subsidiaries, affiliates or successors arising out of or related to the performance of the services hereunder by Cardinal, regardless of whether such claim is based upon any of the above stated reasons or otherwise. Results relate only to the samples identified above. This report shall not be reproduced except in full with written approval of Cardinal Laboratories.

Mike Snyder For Celey D. Keene, Lab Director/Quality Manager



PHONE (575) 393-2326 ° 101 E. MARLAND ° HOBBS, NM 88240

Analytical Results For:

TETRA TECH
 CHUCK TERHUNE
 901 WEST WALL STREET , STE 100
 MIDLAND TX, 79701
 Fax To: (432) 682-3946

Received: 06/12/2025
 Reported: 06/13/2025
 Project Name: STATE F1 #026
 Project Number: 212C-MD-03883
 Project Location: LEA CO NM

Sampling Date: 06/11/2025
 Sampling Type: Soil
 Sampling Condition: Cool & Intact
 Sample Received By: Alyssa Parras

Sample ID: BH - 21 4' (H253482-21)

BTEX 8021B		mg/kg		Analyzed By: JH						
Analyte	Result	Reporting Limit	Analyzed	Method Blank	BS	% Recovery	True Value QC	RPD	Qualifier	
Benzene*	<0.050	0.050	06/12/2025	ND	2.00	99.8	2.00	7.59		
Toluene*	<0.050	0.050	06/12/2025	ND	2.06	103	2.00	5.66		
Ethylbenzene*	<0.050	0.050	06/12/2025	ND	2.08	104	2.00	4.70		
Total Xylenes*	<0.150	0.150	06/12/2025	ND	6.22	104	6.00	4.37		
Total BTEX	<0.300	0.300	06/12/2025	ND						

Surrogate: 4-Bromofluorobenzene (PID) 113 % 71.5-134

Chloride, SM4500Cl-B		mg/kg		Analyzed By: AC						
Analyte	Result	Reporting Limit	Analyzed	Method Blank	BS	% Recovery	True Value QC	RPD	Qualifier	
Chloride	4000	16.0	06/12/2025	ND	432	108	400	0.00		

TPH 8015M		mg/kg		Analyzed By: MS					
Analyte	Result	Reporting Limit	Analyzed	Method Blank	BS	% Recovery	True Value QC	RPD	Qualifier
GRO C6-C10*	<10.0	10.0	06/12/2025	ND	200	100	200	1.62	
DRO >C10-C28*	<10.0	10.0	06/12/2025	ND	210	105	200	2.57	
EXT DRO >C28-C36	<10.0	10.0	06/12/2025	ND					

Surrogate: 1-Chlorooctane 73.3 % 44.4-145

Surrogate: 1-Chlorooctadecane 72.5 % 40.6-153

Cardinal Laboratories

*=Accredited Analyte

PLEASE NOTE: Liability and Damages. Cardinal's liability and client's exclusive remedy for any claim arising, whether based in contract or tort, shall be limited to the amount paid by client for analyses. All claims, including those for negligence and any other cause whatsoever shall be deemed waived unless made in writing and received by Cardinal within thirty (30) days after completion of the applicable service. In no event shall Cardinal be liable for incidental or consequential damages, including, without limitation, business interruptions, loss of use, or loss of profits incurred by client, its subsidiaries, affiliates or successors arising out of or related to the performance of the services hereunder by Cardinal, regardless of whether such claim is based upon any of the above stated reasons or otherwise. Results relate only to the samples identified above. This report shall not be reproduced except in full with written approval of Cardinal Laboratories.

Mike Snyder For Celey D. Keene, Lab Director/Quality Manager



PHONE (575) 393-2326 ° 101 E. MARLAND ° HOBBS, NM 88240

Analytical Results For:

TETRA TECH
 CHUCK TERHUNE
 901 WEST WALL STREET , STE 100
 MIDLAND TX, 79701
 Fax To: (432) 682-3946

Received: 06/12/2025
 Reported: 06/13/2025
 Project Name: STATE F1 #026
 Project Number: 212C-MD-03883
 Project Location: LEA CO NM

Sampling Date: 06/11/2025
 Sampling Type: Soil
 Sampling Condition: Cool & Intact
 Sample Received By: Alyssa Parras

Sample ID: BH - 22 4' (H253482-22)

BTEx 8021B		mg/kg		Analyzed By: JH						
Analyte	Result	Reporting Limit	Analyzed	Method Blank	BS	% Recovery	True Value QC	RPD	Qualifier	
Benzene*	<0.050	0.050	06/12/2025	ND	2.00	99.8	2.00	7.59		
Toluene*	<0.050	0.050	06/12/2025	ND	2.06	103	2.00	5.66		
Ethylbenzene*	<0.050	0.050	06/12/2025	ND	2.08	104	2.00	4.70		
Total Xylenes*	<0.150	0.150	06/12/2025	ND	6.22	104	6.00	4.37		
Total BTEX	<0.300	0.300	06/12/2025	ND						

Surrogate: 4-Bromofluorobenzene (PID) 114 % 71.5-134

Chloride, SM4500Cl-B		mg/kg		Analyzed By: AC						
Analyte	Result	Reporting Limit	Analyzed	Method Blank	BS	% Recovery	True Value QC	RPD	Qualifier	
Chloride	2080	16.0	06/12/2025	ND	432	108	400	0.00		

TPH 8015M		mg/kg		Analyzed By: MS					
Analyte	Result	Reporting Limit	Analyzed	Method Blank	BS	% Recovery	True Value QC	RPD	Qualifier
GRO C6-C10*	<10.0	10.0	06/12/2025	ND	200	100	200	1.62	
DRO >C10-C28*	<10.0	10.0	06/12/2025	ND	210	105	200	2.57	
EXT DRO >C28-C36	<10.0	10.0	06/12/2025	ND					

Surrogate: 1-Chlorooctane 97.2 % 44.4-145

Surrogate: 1-Chlorooctadecane 96.7 % 40.6-153

Cardinal Laboratories

*=Accredited Analyte

PLEASE NOTE: Liability and Damages. Cardinal's liability and client's exclusive remedy for any claim arising, whether based in contract or tort, shall be limited to the amount paid by client for analyses. All claims, including those for negligence and any other cause whatsoever shall be deemed waived unless made in writing and received by Cardinal within thirty (30) days after completion of the applicable service. In no event shall Cardinal be liable for incidental or consequential damages, including, without limitation, business interruptions, loss of use, or loss of profits incurred by client, its subsidiaries, affiliates or successors arising out of or related to the performance of the services hereunder by Cardinal, regardless of whether such claim is based upon any of the above stated reasons or otherwise. Results relate only to the samples identified above. This report shall not be reproduced except in full with written approval of Cardinal Laboratories.

Mike Snyder For Celey D. Keene, Lab Director/Quality Manager



PHONE (575) 393-2326 ° 101 E. MARLAND ° HOBBS, NM 88240

Analytical Results For:

TETRA TECH
 CHUCK TERHUNE
 901 WEST WALL STREET , STE 100
 MIDLAND TX, 79701
 Fax To: (432) 682-3946

Received: 06/12/2025
 Reported: 06/13/2025
 Project Name: STATE F1 #026
 Project Number: 212C-MD-03883
 Project Location: LEA CO NM

Sampling Date: 06/11/2025
 Sampling Type: Soil
 Sampling Condition: Cool & Intact
 Sample Received By: Alyssa Parras

Sample ID: BH - 23 4' (H253482-23)

BTEx 8021B		mg/kg		Analyzed By: JH						
Analyte	Result	Reporting Limit	Analyzed	Method Blank	BS	% Recovery	True Value QC	RPD	Qualifier	
Benzene*	<0.050	0.050	06/12/2025	ND	2.00	99.8	2.00	7.59		
Toluene*	<0.050	0.050	06/12/2025	ND	2.06	103	2.00	5.66		
Ethylbenzene*	<0.050	0.050	06/12/2025	ND	2.08	104	2.00	4.70		
Total Xylenes*	<0.150	0.150	06/12/2025	ND	6.22	104	6.00	4.37		
Total BTEX	<0.300	0.300	06/12/2025	ND						

Surrogate: 4-Bromofluorobenzene (PID) 111 % 71.5-134

Chloride, SM4500Cl-B		mg/kg		Analyzed By: AC						
Analyte	Result	Reporting Limit	Analyzed	Method Blank	BS	% Recovery	True Value QC	RPD	Qualifier	
Chloride	4120	16.0	06/12/2025	ND	432	108	400	0.00		

TPH 8015M		mg/kg		Analyzed By: MS					
Analyte	Result	Reporting Limit	Analyzed	Method Blank	BS	% Recovery	True Value QC	RPD	Qualifier
GRO C6-C10*	<10.0	10.0	06/12/2025	ND	200	100	200	1.62	
DRO >C10-C28*	<10.0	10.0	06/12/2025	ND	210	105	200	2.57	
EXT DRO >C28-C36	<10.0	10.0	06/12/2025	ND					

Surrogate: 1-Chlorooctane 88.1 % 44.4-145

Surrogate: 1-Chlorooctadecane 86.7 % 40.6-153

Cardinal Laboratories

*=Accredited Analyte

PLEASE NOTE: Liability and Damages. Cardinal's liability and client's exclusive remedy for any claim arising, whether based in contract or tort, shall be limited to the amount paid by client for analyses. All claims, including those for negligence and any other cause whatsoever shall be deemed waived unless made in writing and received by Cardinal within thirty (30) days after completion of the applicable service. In no event shall Cardinal be liable for incidental or consequential damages, including, without limitation, business interruptions, loss of use, or loss of profits incurred by client, its subsidiaries, affiliates or successors arising out of or related to the performance of the services hereunder by Cardinal, regardless of whether such claim is based upon any of the above stated reasons or otherwise. Results relate only to the samples identified above. This report shall not be reproduced except in full with written approval of Cardinal Laboratories.

Mike Snyder For Celey D. Keene, Lab Director/Quality Manager



PHONE (575) 393-2326 ° 101 E. MARLAND ° HOBBS, NM 88240

Analytical Results For:

TETRA TECH
 CHUCK TERHUNE
 901 WEST WALL STREET , STE 100
 MIDLAND TX, 79701
 Fax To: (432) 682-3946

Received: 06/12/2025
 Reported: 06/13/2025
 Project Name: STATE F1 #026
 Project Number: 212C-MD-03883
 Project Location: LEA CO NM

Sampling Date: 06/11/2025
 Sampling Type: Soil
 Sampling Condition: Cool & Intact
 Sample Received By: Alyssa Parras

Sample ID: BH - 24 4' (H253482-24)

BTEx 8021B		mg/kg		Analyzed By: JH						
Analyte	Result	Reporting Limit	Analyzed	Method Blank	BS	% Recovery	True Value QC	RPD	Qualifier	
Benzene*	<0.050	0.050	06/12/2025	ND	2.00	99.8	2.00	7.59		
Toluene*	<0.050	0.050	06/12/2025	ND	2.06	103	2.00	5.66		
Ethylbenzene*	<0.050	0.050	06/12/2025	ND	2.08	104	2.00	4.70		
Total Xylenes*	<0.150	0.150	06/12/2025	ND	6.22	104	6.00	4.37		
Total BTEX	<0.300	0.300	06/12/2025	ND						

Surrogate: 4-Bromofluorobenzene (PID) 110 % 71.5-134

Chloride, SM4500Cl-B		mg/kg		Analyzed By: AC						
Analyte	Result	Reporting Limit	Analyzed	Method Blank	BS	% Recovery	True Value QC	RPD	Qualifier	
Chloride	48.0	16.0	06/12/2025	ND	432	108	400	0.00		

TPH 8015M		mg/kg		Analyzed By: MS					
Analyte	Result	Reporting Limit	Analyzed	Method Blank	BS	% Recovery	True Value QC	RPD	Qualifier
GRO C6-C10*	<10.0	10.0	06/12/2025	ND	200	100	200	1.62	
DRO >C10-C28*	<10.0	10.0	06/12/2025	ND	210	105	200	2.57	
EXT DRO >C28-C36	<10.0	10.0	06/12/2025	ND					

Surrogate: 1-Chlorooctane 111 % 44.4-145

Surrogate: 1-Chlorooctadecane 116 % 40.6-153

Cardinal Laboratories

*=Accredited Analyte

PLEASE NOTE: Liability and Damages. Cardinal's liability and client's exclusive remedy for any claim arising, whether based in contract or tort, shall be limited to the amount paid by client for analyses. All claims, including those for negligence and any other cause whatsoever shall be deemed waived unless made in writing and received by Cardinal within thirty (30) days after completion of the applicable service. In no event shall Cardinal be liable for incidental or consequential damages, including, without limitation, business interruptions, loss of use, or loss of profits incurred by client, its subsidiaries, affiliates or successors arising out of or related to the performance of the services hereunder by Cardinal, regardless of whether such claim is based upon any of the above stated reasons or otherwise. Results relate only to the samples identified above. This report shall not be reproduced except in full with written approval of Cardinal Laboratories.

Mike Snyder For Celey D. Keene, Lab Director/Quality Manager



PHONE (575) 393-2326 ° 101 E. MARLAND ° HOBBS, NM 88240

Analytical Results For:

TETRA TECH
 CHUCK TERHUNE
 901 WEST WALL STREET , STE 100
 MIDLAND TX, 79701
 Fax To: (432) 682-3946

Received: 06/12/2025
 Reported: 06/13/2025
 Project Name: STATE F1 #026
 Project Number: 212C-MD-03883
 Project Location: LEA CO NM

Sampling Date: 06/11/2025
 Sampling Type: Soil
 Sampling Condition: Cool & Intact
 Sample Received By: Alyssa Parras

Sample ID: BH - 25 4' (H253482-25)

BTEX 8021B		mg/kg		Analyzed By: JH						
Analyte	Result	Reporting Limit	Analyzed	Method Blank	BS	% Recovery	True Value QC	RPD	Qualifier	
Benzene*	<0.050	0.050	06/12/2025	ND	2.00	99.8	2.00	7.59		
Toluene*	<0.050	0.050	06/12/2025	ND	2.06	103	2.00	5.66		
Ethylbenzene*	<0.050	0.050	06/12/2025	ND	2.08	104	2.00	4.70		
Total Xylenes*	<0.150	0.150	06/12/2025	ND	6.22	104	6.00	4.37		
Total BTEX	<0.300	0.300	06/12/2025	ND						

Surrogate: 4-Bromofluorobenzene (PID) 114 % 71.5-134

Chloride, SM4500Cl-B		mg/kg		Analyzed By: AC						
Analyte	Result	Reporting Limit	Analyzed	Method Blank	BS	% Recovery	True Value QC	RPD	Qualifier	
Chloride	352	16.0	06/12/2025	ND	432	108	400	0.00		

TPH 8015M		mg/kg		Analyzed By: MS					
Analyte	Result	Reporting Limit	Analyzed	Method Blank	BS	% Recovery	True Value QC	RPD	Qualifier
GRO C6-C10*	<10.0	10.0	06/12/2025	ND	222	111	200	1.23	
DRO >C10-C28*	<10.0	10.0	06/12/2025	ND	202	101	200	0.231	
EXT DRO >C28-C36	<10.0	10.0	06/12/2025	ND					

Surrogate: 1-Chlorooctane 114 % 44.4-145

Surrogate: 1-Chlorooctadecane 110 % 40.6-153

Cardinal Laboratories

*=Accredited Analyte

PLEASE NOTE: Liability and Damages. Cardinal's liability and client's exclusive remedy for any claim arising, whether based in contract or tort, shall be limited to the amount paid by client for analyses. All claims, including those for negligence and any other cause whatsoever shall be deemed waived unless made in writing and received by Cardinal within thirty (30) days after completion of the applicable service. In no event shall Cardinal be liable for incidental or consequential damages, including, without limitation, business interruptions, loss of use, or loss of profits incurred by client, its subsidiaries, affiliates or successors arising out of or related to the performance of the services hereunder by Cardinal, regardless of whether such claim is based upon any of the above stated reasons or otherwise. Results relate only to the samples identified above. This report shall not be reproduced except in full with written approval of Cardinal Laboratories.

Mike Snyder For Celey D. Keene, Lab Director/Quality Manager



PHONE (575) 393-2326 ° 101 E. MARLAND ° HOBBS, NM 88240

Analytical Results For:

TETRA TECH
 CHUCK TERHUNE
 901 WEST WALL STREET , STE 100
 MIDLAND TX, 79701
 Fax To: (432) 682-3946

Received: 06/12/2025
 Reported: 06/13/2025
 Project Name: STATE F1 #026
 Project Number: 212C-MD-03883
 Project Location: LEA CO NM

Sampling Date: 06/11/2025
 Sampling Type: Soil
 Sampling Condition: Cool & Intact
 Sample Received By: Alyssa Parras

Sample ID: BH - 26 4' (H253482-26)

BTEx 8021B		mg/kg		Analyzed By: JH						
Analyte	Result	Reporting Limit	Analyzed	Method Blank	BS	% Recovery	True Value QC	RPD	Qualifier	
Benzene*	<0.050	0.050	06/12/2025	ND	2.00	99.8	2.00	7.59		
Toluene*	<0.050	0.050	06/12/2025	ND	2.06	103	2.00	5.66		
Ethylbenzene*	<0.050	0.050	06/12/2025	ND	2.08	104	2.00	4.70		
Total Xylenes*	<0.150	0.150	06/12/2025	ND	6.22	104	6.00	4.37		
Total BTEX	<0.300	0.300	06/12/2025	ND						

Surrogate: 4-Bromofluorobenzene (PID) 114 % 71.5-134

Chloride, SM4500Cl-B		mg/kg		Analyzed By: HM					
Analyte	Result	Reporting Limit	Analyzed	Method Blank	BS	% Recovery	True Value QC	RPD	Qualifier
Chloride	48.0	16.0	06/12/2025	ND	432	108	400	0.00	

TPH 8015M		mg/kg		Analyzed By: MS					
Analyte	Result	Reporting Limit	Analyzed	Method Blank	BS	% Recovery	True Value QC	RPD	Qualifier
GRO C6-C10*	<10.0	10.0	06/12/2025	ND	222	111	200	1.23	
DRO >C10-C28*	<10.0	10.0	06/12/2025	ND	202	101	200	0.231	
EXT DRO >C28-C36	<10.0	10.0	06/12/2025	ND					

Surrogate: 1-Chlorooctane 110 % 44.4-145

Surrogate: 1-Chlorooctadecane 103 % 40.6-153

Cardinal Laboratories

*=Accredited Analyte

PLEASE NOTE: Liability and Damages. Cardinal's liability and client's exclusive remedy for any claim arising, whether based in contract or tort, shall be limited to the amount paid by client for analyses. All claims, including those for negligence and any other cause whatsoever shall be deemed waived unless made in writing and received by Cardinal within thirty (30) days after completion of the applicable service. In no event shall Cardinal be liable for incidental or consequential damages, including, without limitation, business interruptions, loss of use, or loss of profits incurred by client, its subsidiaries, affiliates or successors arising out of or related to the performance of the services hereunder by Cardinal, regardless of whether such claim is based upon any of the above stated reasons or otherwise. Results relate only to the samples identified above. This report shall not be reproduced except in full with written approval of Cardinal Laboratories.

Mike Snyder For Celey D. Keene, Lab Director/Quality Manager



PHONE (575) 393-2326 ° 101 E. MARLAND ° HOBBS, NM 88240

Analytical Results For:

TETRA TECH
 CHUCK TERHUNE
 901 WEST WALL STREET , STE 100
 MIDLAND TX, 79701
 Fax To: (432) 682-3946

Received: 06/12/2025
 Reported: 06/13/2025
 Project Name: STATE F1 #026
 Project Number: 212C-MD-03883
 Project Location: LEA CO NM

Sampling Date: 06/11/2025
 Sampling Type: Soil
 Sampling Condition: Cool & Intact
 Sample Received By: Alyssa Parras

Sample ID: BH - 27 4' (H253482-27)

BTEx 8021B		mg/kg		Analyzed By: JH						
Analyte	Result	Reporting Limit	Analyzed	Method Blank	BS	% Recovery	True Value QC	RPD	Qualifier	
Benzene*	<0.050	0.050	06/12/2025	ND	2.00	99.8	2.00	7.59		
Toluene*	<0.050	0.050	06/12/2025	ND	2.06	103	2.00	5.66		
Ethylbenzene*	<0.050	0.050	06/12/2025	ND	2.08	104	2.00	4.70		
Total Xylenes*	<0.150	0.150	06/12/2025	ND	6.22	104	6.00	4.37		
Total BTEX	<0.300	0.300	06/12/2025	ND						

Surrogate: 4-Bromofluorobenzene (PID) 113 % 71.5-134

Chloride, SM4500Cl-B		mg/kg		Analyzed By: HM					
Analyte	Result	Reporting Limit	Analyzed	Method Blank	BS	% Recovery	True Value QC	RPD	Qualifier
Chloride	32.0	16.0	06/12/2025	ND	432	108	400	0.00	

TPH 8015M		mg/kg		Analyzed By: MS					
Analyte	Result	Reporting Limit	Analyzed	Method Blank	BS	% Recovery	True Value QC	RPD	Qualifier
GRO C6-C10*	<10.0	10.0	06/12/2025	ND	222	111	200	1.23	
DRO >C10-C28*	<10.0	10.0	06/12/2025	ND	202	101	200	0.231	
EXT DRO >C28-C36	<10.0	10.0	06/12/2025	ND					

Surrogate: 1-Chlorooctane 116 % 44.4-145

Surrogate: 1-Chlorooctadecane 111 % 40.6-153

Cardinal Laboratories

*=Accredited Analyte

PLEASE NOTE: Liability and Damages. Cardinal's liability and client's exclusive remedy for any claim arising, whether based in contract or tort, shall be limited to the amount paid by client for analyses. All claims, including those for negligence and any other cause whatsoever shall be deemed waived unless made in writing and received by Cardinal within thirty (30) days after completion of the applicable service. In no event shall Cardinal be liable for incidental or consequential damages, including, without limitation, business interruptions, loss of use, or loss of profits incurred by client, its subsidiaries, affiliates or successors arising out of or related to the performance of the services hereunder by Cardinal, regardless of whether such claim is based upon any of the above stated reasons or otherwise. Results relate only to the samples identified above. This report shall not be reproduced except in full with written approval of Cardinal Laboratories.

Mike Snyder For Celey D. Keene, Lab Director/Quality Manager



PHONE (575) 393-2326 ° 101 E. MARLAND ° HOBBS, NM 88240

Analytical Results For:

TETRA TECH
 CHUCK TERHUNE
 901 WEST WALL STREET , STE 100
 MIDLAND TX, 79701
 Fax To: (432) 682-3946

Received: 06/12/2025
 Reported: 06/13/2025
 Project Name: STATE F1 #026
 Project Number: 212C-MD-03883
 Project Location: LEA CO NM

Sampling Date: 06/11/2025
 Sampling Type: Soil
 Sampling Condition: Cool & Intact
 Sample Received By: Alyssa Parras

Sample ID: SW - 1 (H253482-28)

BTEx 8021B		mg/kg		Analyzed By: JH						
Analyte	Result	Reporting Limit	Analyzed	Method Blank	BS	% Recovery	True Value QC	RPD	Qualifier	
Benzene*	<0.050	0.050	06/12/2025	ND	2.00	99.8	2.00	7.59		
Toluene*	<0.050	0.050	06/12/2025	ND	2.06	103	2.00	5.66		
Ethylbenzene*	<0.050	0.050	06/12/2025	ND	2.08	104	2.00	4.70		
Total Xylenes*	<0.150	0.150	06/12/2025	ND	6.22	104	6.00	4.37		
Total BTEX	<0.300	0.300	06/12/2025	ND						

Surrogate: 4-Bromofluorobenzene (PID) 114 % 71.5-134

Chloride, SM4500Cl-B		mg/kg		Analyzed By: HM						
Analyte	Result	Reporting Limit	Analyzed	Method Blank	BS	% Recovery	True Value QC	RPD	Qualifier	
Chloride	<16.0	16.0	06/12/2025	ND	432	108	400	0.00		

TPH 8015M		mg/kg		Analyzed By: MS					
Analyte	Result	Reporting Limit	Analyzed	Method Blank	BS	% Recovery	True Value QC	RPD	Qualifier
GRO C6-C10*	<10.0	10.0	06/12/2025	ND	222	111	200	1.23	
DRO >C10-C28*	<10.0	10.0	06/12/2025	ND	202	101	200	0.231	
EXT DRO >C28-C36	<10.0	10.0	06/12/2025	ND					

Surrogate: 1-Chlorooctane 118 % 44.4-145

Surrogate: 1-Chlorooctadecane 112 % 40.6-153

Cardinal Laboratories

*=Accredited Analyte

PLEASE NOTE: Liability and Damages. Cardinal's liability and client's exclusive remedy for any claim arising, whether based in contract or tort, shall be limited to the amount paid by client for analyses. All claims, including those for negligence and any other cause whatsoever shall be deemed waived unless made in writing and received by Cardinal within thirty (30) days after completion of the applicable service. In no event shall Cardinal be liable for incidental or consequential damages, including, without limitation, business interruptions, loss of use, or loss of profits incurred by client, its subsidiaries, affiliates or successors arising out of or related to the performance of the services hereunder by Cardinal, regardless of whether such claim is based upon any of the above stated reasons or otherwise. Results relate only to the samples identified above. This report shall not be reproduced except in full with written approval of Cardinal Laboratories.

Mike Snyder For Celey D. Keene, Lab Director/Quality Manager



PHONE (575) 393-2326 ° 101 E. MARLAND ° HOBBS, NM 88240

Analytical Results For:

TETRA TECH
 CHUCK TERHUNE
 901 WEST WALL STREET , STE 100
 MIDLAND TX, 79701
 Fax To: (432) 682-3946

Received: 06/12/2025
 Reported: 06/13/2025
 Project Name: STATE F1 #026
 Project Number: 212C-MD-03883
 Project Location: LEA CO NM

Sampling Date: 06/11/2025
 Sampling Type: Soil
 Sampling Condition: Cool & Intact
 Sample Received By: Alyssa Parras

Sample ID: SW - 2 (H253482-29)

BTEx 8021B		mg/kg		Analyzed By: JH						
Analyte	Result	Reporting Limit	Analyzed	Method Blank	BS	% Recovery	True Value QC	RPD	Qualifier	
Benzene*	<0.050	0.050	06/12/2025	ND	2.00	99.8	2.00	7.59		
Toluene*	<0.050	0.050	06/12/2025	ND	2.06	103	2.00	5.66		
Ethylbenzene*	<0.050	0.050	06/12/2025	ND	2.08	104	2.00	4.70		
Total Xylenes*	<0.150	0.150	06/12/2025	ND	6.22	104	6.00	4.37		
Total BTEX	<0.300	0.300	06/12/2025	ND						

Surrogate: 4-Bromofluorobenzene (PID) 114 % 71.5-134

Chloride, SM4500Cl-B		mg/kg		Analyzed By: HM						
Analyte	Result	Reporting Limit	Analyzed	Method Blank	BS	% Recovery	True Value QC	RPD	Qualifier	
Chloride	<16.0	16.0	06/12/2025	ND	432	108	400	0.00		

TPH 8015M		mg/kg		Analyzed By: MS					
Analyte	Result	Reporting Limit	Analyzed	Method Blank	BS	% Recovery	True Value QC	RPD	Qualifier
GRO C6-C10*	<10.0	10.0	06/12/2025	ND	222	111	200	1.23	
DRO >C10-C28*	<10.0	10.0	06/12/2025	ND	202	101	200	0.231	
EXT DRO >C28-C36	<10.0	10.0	06/12/2025	ND					

Surrogate: 1-Chlorooctane 112 % 44.4-145

Surrogate: 1-Chlorooctadecane 106 % 40.6-153

Cardinal Laboratories

*=Accredited Analyte

PLEASE NOTE: Liability and Damages. Cardinal's liability and client's exclusive remedy for any claim arising, whether based in contract or tort, shall be limited to the amount paid by client for analyses. All claims, including those for negligence and any other cause whatsoever shall be deemed waived unless made in writing and received by Cardinal within thirty (30) days after completion of the applicable service. In no event shall Cardinal be liable for incidental or consequential damages, including, without limitation, business interruptions, loss of use, or loss of profits incurred by client, its subsidiaries, affiliates or successors arising out of or related to the performance of the services hereunder by Cardinal, regardless of whether such claim is based upon any of the above stated reasons or otherwise. Results relate only to the samples identified above. This report shall not be reproduced except in full with written approval of Cardinal Laboratories.

Mike Snyder For Celey D. Keene, Lab Director/Quality Manager



PHONE (575) 393-2326 ° 101 E. MARLAND ° HOBBS, NM 88240

Analytical Results For:

TETRA TECH
 CHUCK TERHUNE
 901 WEST WALL STREET , STE 100
 MIDLAND TX, 79701
 Fax To: (432) 682-3946

Received: 06/12/2025
 Reported: 06/13/2025
 Project Name: STATE F1 #026
 Project Number: 212C-MD-03883
 Project Location: LEA CO NM

Sampling Date: 06/11/2025
 Sampling Type: Soil
 Sampling Condition: Cool & Intact
 Sample Received By: Alyssa Parras

Sample ID: SW - 3 (H253482-30)

BTEx 8021B		mg/kg		Analyzed By: JH						
Analyte	Result	Reporting Limit	Analyzed	Method Blank	BS	% Recovery	True Value QC	RPD	Qualifier	
Benzene*	<0.050	0.050	06/12/2025	ND	2.00	99.8	2.00	7.59		
Toluene*	<0.050	0.050	06/12/2025	ND	2.06	103	2.00	5.66		
Ethylbenzene*	<0.050	0.050	06/12/2025	ND	2.08	104	2.00	4.70		
Total Xylenes*	<0.150	0.150	06/12/2025	ND	6.22	104	6.00	4.37		
Total BTEX	<0.300	0.300	06/12/2025	ND						

Surrogate: 4-Bromofluorobenzene (PID) 111 % 71.5-134

Chloride, SM4500Cl-B		mg/kg		Analyzed By: HM						
Analyte	Result	Reporting Limit	Analyzed	Method Blank	BS	% Recovery	True Value QC	RPD	Qualifier	
Chloride	<16.0	16.0	06/12/2025	ND	432	108	400	0.00		

TPH 8015M		mg/kg		Analyzed By: MS					
Analyte	Result	Reporting Limit	Analyzed	Method Blank	BS	% Recovery	True Value QC	RPD	Qualifier
GRO C6-C10*	<10.0	10.0	06/12/2025	ND	222	111	200	1.23	
DRO >C10-C28*	<10.0	10.0	06/12/2025	ND	202	101	200	0.231	
EXT DRO >C28-C36	<10.0	10.0	06/12/2025	ND					

Surrogate: 1-Chlorooctane 115 % 44.4-145

Surrogate: 1-Chlorooctadecane 108 % 40.6-153

Cardinal Laboratories

*=Accredited Analyte

PLEASE NOTE: Liability and Damages. Cardinal's liability and client's exclusive remedy for any claim arising, whether based in contract or tort, shall be limited to the amount paid by client for analyses. All claims, including those for negligence and any other cause whatsoever shall be deemed waived unless made in writing and received by Cardinal within thirty (30) days after completion of the applicable service. In no event shall Cardinal be liable for incidental or consequential damages, including, without limitation, business interruptions, loss of use, or loss of profits incurred by client, its subsidiaries, affiliates or successors arising out of or related to the performance of the services hereunder by Cardinal, regardless of whether such claim is based upon any of the above stated reasons or otherwise. Results relate only to the samples identified above. This report shall not be reproduced except in full with written approval of Cardinal Laboratories.

Mike Snyder For Celey D. Keene, Lab Director/Quality Manager



PHONE (575) 393-2326 ° 101 E. MARLAND ° HOBBS, NM 88240

Analytical Results For:

TETRA TECH
 CHUCK TERHUNE
 901 WEST WALL STREET , STE 100
 MIDLAND TX, 79701
 Fax To: (432) 682-3946

Received: 06/12/2025
 Reported: 06/13/2025
 Project Name: STATE F1 #026
 Project Number: 212C-MD-03883
 Project Location: LEA CO NM

Sampling Date: 06/11/2025
 Sampling Type: Soil
 Sampling Condition: Cool & Intact
 Sample Received By: Alyssa Parras

Sample ID: SW - 4 (H253482-31)

BTEx 8021B		mg/kg		Analyzed By: JH						
Analyte	Result	Reporting Limit	Analyzed	Method Blank	BS	% Recovery	True Value QC	RPD	Qualifier	
Benzene*	<0.050	0.050	06/12/2025	ND	1.91	95.7	2.00	7.07		
Toluene*	<0.050	0.050	06/12/2025	ND	2.01	101	2.00	6.60		
Ethylbenzene*	<0.050	0.050	06/12/2025	ND	2.00	99.8	2.00	6.37		
Total Xylenes*	<0.150	0.150	06/12/2025	ND	5.94	98.9	6.00	6.66		
Total BTEX	<0.300	0.300	06/12/2025	ND						

Surrogate: 4-Bromofluorobenzene (PID) 94.5 % 71.5-134

Chloride, SM4500Cl-B		mg/kg		Analyzed By: HM						
Analyte	Result	Reporting Limit	Analyzed	Method Blank	BS	% Recovery	True Value QC	RPD	Qualifier	
Chloride	80.0	16.0	06/12/2025	ND	432	108	400	0.00		

TPH 8015M		mg/kg		Analyzed By: MS					
Analyte	Result	Reporting Limit	Analyzed	Method Blank	BS	% Recovery	True Value QC	RPD	Qualifier
GRO C6-C10*	<10.0	10.0	06/12/2025	ND	222	111	200	1.23	
DRO >C10-C28*	<10.0	10.0	06/12/2025	ND	202	101	200	0.231	
EXT DRO >C28-C36	<10.0	10.0	06/12/2025	ND					

Surrogate: 1-Chlorooctane 114 % 44.4-145

Surrogate: 1-Chlorooctadecane 108 % 40.6-153

Cardinal Laboratories

*=Accredited Analyte

PLEASE NOTE: Liability and Damages. Cardinal's liability and client's exclusive remedy for any claim arising, whether based in contract or tort, shall be limited to the amount paid by client for analyses. All claims, including those for negligence and any other cause whatsoever shall be deemed waived unless made in writing and received by Cardinal within thirty (30) days after completion of the applicable service. In no event shall Cardinal be liable for incidental or consequential damages, including, without limitation, business interruptions, loss of use, or loss of profits incurred by client, its subsidiaries, affiliates or successors arising out of or related to the performance of the services hereunder by Cardinal, regardless of whether such claim is based upon any of the above stated reasons or otherwise. Results relate only to the samples identified above. This report shall not be reproduced except in full with written approval of Cardinal Laboratories.

Mike Snyder For Celey D. Keene, Lab Director/Quality Manager



PHONE (575) 393-2326 ° 101 E. MARLAND ° HOBBS, NM 88240

Analytical Results For:

TETRA TECH
 CHUCK TERHUNE
 901 WEST WALL STREET , STE 100
 MIDLAND TX, 79701
 Fax To: (432) 682-3946

Received: 06/12/2025
 Reported: 06/13/2025
 Project Name: STATE F1 #026
 Project Number: 212C-MD-03883
 Project Location: LEA CO NM

Sampling Date: 06/11/2025
 Sampling Type: Soil
 Sampling Condition: Cool & Intact
 Sample Received By: Alyssa Parras

Sample ID: SW - 5 (H253482-32)

BTX 8021B		mg/kg		Analyzed By: JH						
Analyte	Result	Reporting Limit	Analyzed	Method Blank	BS	% Recovery	True Value QC	RPD	Qualifier	
Benzene*	<0.050	0.050	06/12/2025	ND	1.91	95.7	2.00	7.07		
Toluene*	<0.050	0.050	06/12/2025	ND	2.01	101	2.00	6.60		
Ethylbenzene*	<0.050	0.050	06/12/2025	ND	2.00	99.8	2.00	6.37		
Total Xylenes*	<0.150	0.150	06/12/2025	ND	5.94	98.9	6.00	6.66		
Total BTX	<0.300	0.300	06/12/2025	ND						

Surrogate: 4-Bromofluorobenzene (PID) 93.6 % 71.5-134

Chloride, SM4500CI-B		mg/kg		Analyzed By: HM						
Analyte	Result	Reporting Limit	Analyzed	Method Blank	BS	% Recovery	True Value QC	RPD	Qualifier	
Chloride	1840	16.0	06/12/2025	ND	432	108	400	0.00		

TPH 8015M		mg/kg		Analyzed By: MS					
Analyte	Result	Reporting Limit	Analyzed	Method Blank	BS	% Recovery	True Value QC	RPD	Qualifier
GRO C6-C10*	<10.0	10.0	06/12/2025	ND	222	111	200	1.23	
DRO >C10-C28*	<10.0	10.0	06/12/2025	ND	202	101	200	0.231	
EXT DRO >C28-C36	<10.0	10.0	06/12/2025	ND					

Surrogate: 1-Chlorooctane 113 % 44.4-145

Surrogate: 1-Chlorooctadecane 106 % 40.6-153

Cardinal Laboratories

*=Accredited Analyte

PLEASE NOTE: Liability and Damages. Cardinal's liability and client's exclusive remedy for any claim arising, whether based in contract or tort, shall be limited to the amount paid by client for analyses. All claims, including those for negligence and any other cause whatsoever shall be deemed waived unless made in writing and received by Cardinal within thirty (30) days after completion of the applicable service. In no event shall Cardinal be liable for incidental or consequential damages, including, without limitation, business interruptions, loss of use, or loss of profits incurred by client, its subsidiaries, affiliates or successors arising out of or related to the performance of the services hereunder by Cardinal, regardless of whether such claim is based upon any of the above stated reasons or otherwise. Results relate only to the samples identified above. This report shall not be reproduced except in full with written approval of Cardinal Laboratories.

Mike Snyder For Celey D. Keene, Lab Director/Quality Manager



PHONE (575) 393-2326 ° 101 E. MARLAND ° HOBBS, NM 88240

Analytical Results For:

TETRA TECH
 CHUCK TERHUNE
 901 WEST WALL STREET , STE 100
 MIDLAND TX, 79701
 Fax To: (432) 682-3946

Received: 06/12/2025
 Reported: 06/13/2025
 Project Name: STATE F1 #026
 Project Number: 212C-MD-03883
 Project Location: LEA CO NM

Sampling Date: 06/11/2025
 Sampling Type: Soil
 Sampling Condition: Cool & Intact
 Sample Received By: Alyssa Parras

Sample ID: SW - 9 (H253482-33)

BTEx 8021B		mg/kg		Analyzed By: JH						
Analyte	Result	Reporting Limit	Analyzed	Method Blank	BS	% Recovery	True Value QC	RPD	Qualifier	
Benzene*	<0.050	0.050	06/12/2025	ND	1.91	95.7	2.00	7.07		
Toluene*	<0.050	0.050	06/12/2025	ND	2.01	101	2.00	6.60		
Ethylbenzene*	<0.050	0.050	06/12/2025	ND	2.00	99.8	2.00	6.37		
Total Xylenes*	<0.150	0.150	06/12/2025	ND	5.94	98.9	6.00	6.66		
Total BTEx	<0.300	0.300	06/12/2025	ND						

Surrogate: 4-Bromofluorobenzene (PID) 94.7 % 71.5-134

Chloride, SM4500CI-B		mg/kg		Analyzed By: HM						
Analyte	Result	Reporting Limit	Analyzed	Method Blank	BS	% Recovery	True Value QC	RPD	Qualifier	
Chloride	<16.0	16.0	06/12/2025	ND	432	108	400	0.00		

TPH 8015M		mg/kg		Analyzed By: MS					
Analyte	Result	Reporting Limit	Analyzed	Method Blank	BS	% Recovery	True Value QC	RPD	Qualifier
GRO C6-C10*	<10.0	10.0	06/12/2025	ND	222	111	200	1.23	
DRO >C10-C28*	<10.0	10.0	06/12/2025	ND	202	101	200	0.231	
EXT DRO >C28-C36	<10.0	10.0	06/12/2025	ND					

Surrogate: 1-Chlorooctane 109 % 44.4-145

Surrogate: 1-Chlorooctadecane 103 % 40.6-153

Cardinal Laboratories

*=Accredited Analyte

PLEASE NOTE: Liability and Damages. Cardinal's liability and client's exclusive remedy for any claim arising, whether based in contract or tort, shall be limited to the amount paid by client for analyses. All claims, including those for negligence and any other cause whatsoever shall be deemed waived unless made in writing and received by Cardinal within thirty (30) days after completion of the applicable service. In no event shall Cardinal be liable for incidental or consequential damages, including, without limitation, business interruptions, loss of use, or loss of profits incurred by client, its subsidiaries, affiliates or successors arising out of or related to the performance of the services hereunder by Cardinal, regardless of whether such claim is based upon any of the above stated reasons or otherwise. Results relate only to the samples identified above. This report shall not be reproduced except in full with written approval of Cardinal Laboratories.

Mike Snyder For Celey D. Keene, Lab Director/Quality Manager



PHONE (575) 393-2326 ° 101 E. MARLAND ° HOBBS, NM 88240

Analytical Results For:

TETRA TECH
 CHUCK TERHUNE
 901 WEST WALL STREET , STE 100
 MIDLAND TX, 79701
 Fax To: (432) 682-3946

Received: 06/12/2025
 Reported: 06/13/2025
 Project Name: STATE F1 #026
 Project Number: 212C-MD-03883
 Project Location: LEA CO NM

Sampling Date: 06/11/2025
 Sampling Type: Soil
 Sampling Condition: Cool & Intact
 Sample Received By: Alyssa Parras

Sample ID: SW - 10 (H253482-34)

BTEX 8021B		mg/kg		Analyzed By: JH						
Analyte	Result	Reporting Limit	Analyzed	Method Blank	BS	% Recovery	True Value QC	RPD	Qualifier	
Benzene*	<0.050	0.050	06/12/2025	ND	1.91	95.7	2.00	7.07		
Toluene*	<0.050	0.050	06/12/2025	ND	2.01	101	2.00	6.60		
Ethylbenzene*	<0.050	0.050	06/12/2025	ND	2.00	99.8	2.00	6.37		
Total Xylenes*	<0.150	0.150	06/12/2025	ND	5.94	98.9	6.00	6.66		
Total BTEX	<0.300	0.300	06/12/2025	ND						

Surrogate: 4-Bromofluorobenzene (PID) 94.2 % 71.5-134

Chloride, SM4500CI-B		mg/kg		Analyzed By: HM						
Analyte	Result	Reporting Limit	Analyzed	Method Blank	BS	% Recovery	True Value QC	RPD	Qualifier	
Chloride	16.0	16.0	06/12/2025	ND	432	108	400	0.00		

TPH 8015M		mg/kg		Analyzed By: MS					
Analyte	Result	Reporting Limit	Analyzed	Method Blank	BS	% Recovery	True Value QC	RPD	Qualifier
GRO C6-C10*	<10.0	10.0	06/12/2025	ND	222	111	200	1.23	
DRO >C10-C28*	<10.0	10.0	06/12/2025	ND	202	101	200	0.231	
EXT DRO >C28-C36	<10.0	10.0	06/12/2025	ND					

Surrogate: 1-Chlorooctane 109 % 44.4-145

Surrogate: 1-Chlorooctadecane 103 % 40.6-153

Cardinal Laboratories

*=Accredited Analyte

PLEASE NOTE: Liability and Damages. Cardinal's liability and client's exclusive remedy for any claim arising, whether based in contract or tort, shall be limited to the amount paid by client for analyses. All claims, including those for negligence and any other cause whatsoever shall be deemed waived unless made in writing and received by Cardinal within thirty (30) days after completion of the applicable service. In no event shall Cardinal be liable for incidental or consequential damages, including, without limitation, business interruptions, loss of use, or loss of profits incurred by client, its subsidiaries, affiliates or successors arising out of or related to the performance of the services hereunder by Cardinal, regardless of whether such claim is based upon any of the above stated reasons or otherwise. Results relate only to the samples identified above. This report shall not be reproduced except in full with written approval of Cardinal Laboratories.

Mike Snyder For Celey D. Keene, Lab Director/Quality Manager



PHONE (575) 393-2326 ° 101 E. MARLAND ° HOBBS, NM 88240

Notes and Definitions

ND	Analyte NOT DETECTED at or above the reporting limit
RPD	Relative Percent Difference
**	Samples not received at proper temperature of 6°C or below.
***	Insufficient time to reach temperature.
-	Chloride by SM4500Cl-B does not require samples be received at or below 6°C Samples reported on an as received basis (wet) unless otherwise noted on report

Cardinal Laboratories

*=Accredited Analyte

PLEASE NOTE: Liability and Damages. Cardinal's liability and client's exclusive remedy for any claim arising, whether based in contract or tort, shall be limited to the amount paid by client for analyses. All claims, including those for negligence and any other cause whatsoever shall be deemed waived unless made in writing and received by Cardinal within thirty (30) days after completion of the applicable service. In no event shall Cardinal be liable for incidental or consequential damages, including, without limitation, business interruptions, loss of use, or loss of profits incurred by client, its subsidiaries, affiliates or successors arising out of or related to the performance of the services hereunder by Cardinal, regardless of whether such claim is based upon any of the above stated reasons or otherwise. Results relate only to the samples identified above. This report shall not be reproduced except in full with written approval of Cardinal Laboratories.

A handwritten signature in black ink, appearing to read "Mike Snyder", is written over a horizontal line.

Mike Snyder For Celey D. Keene, Lab Director/Quality Manager



CHAIN-OF-CUSTODY AND ANALYSIS REQUEST

101 East Marland, Hobbs, NM 88240
(575) 393-2326 FAX (575) 393-2476

Company Name: Tetra Tech				BILL TO				ANALYSIS REQUEST																					
Project Manager: Chuck Terhune				P.O. #:				<div style="display: flex; justify-content: space-between;"> <div style="writing-mode: vertical-rl; transform: rotate(180deg);">BTEX 8021B BTEX 8260B</div> <div style="writing-mode: vertical-rl; transform: rotate(180deg);">TPH 8015M (GRO+DRO+ORO)</div> <div style="writing-mode: vertical-rl; transform: rotate(180deg);">Chloride Method 300.0 or SM4500CL-B</div> </div>																					
Address: chuck.terhune@tetrattech.com				Company: Tetra Tech																									
City: State: Zip:				Attn: Chuck Terhune																									
Phone #: (281) 755-8965 Fax #:				Address:																									
Project #: 212C-MD-03883 Project Owner: Maverick Permian				City:																									
Project Name: State F 1 #026				State: Zip:																									
Project Location: Lea County, NM				Phone #:																									
Sampler Name: Jorge Fernandez				Fax #:																									
FOR LAB USE ONLY				MATRIX		PRESERV.		SAMPLING																					
Lab I.D.	Sample I.D.	(G)RAB OR (C)OMP.	# CONTAINERS	GROUNDWATER	WASTEWATER	SOIL	OIL	SLUDGE	OTHER :	ACID/BASE:	ICE / COOL	OTHER :	DATE	TIME															
<div style="writing-mode: vertical-rl; transform: rotate(180deg);"> HAS 382 98565402 10 </div>	BH-1 4'	C				X							6/11/25	8:11	X	X	X												
	BH-2 4'													8:16															
	BH-3 4'													8:19															
	BH-4 4'													8:22															
	BH-5 4'													8:27															
	BH-6 4'													8:31															
	BH-7 4'													8:39															
	BH-8 4'													8:46															
	BH-9 4'													8:50															
	BH-10 4'													8:59															

PLEASE NOTE: Liability and Damages. Cardinal's liability and client's exclusive remedy for any claim arising whether based in contract or tort, shall be limited to the amount paid by the client for the analyses. All claims including those for negligence and any other cause whatsoever shall be deemed waived unless made in writing and received by Cardinal within 30 days after completion of the applicable service. In no event shall Cardinal be liable for incidental or consequential damages, including without limitation, business interruptions, loss of use, or loss of profits incurred by client, its subsidiaries, affiliates or successors arising out of or related to the performance of services hereunder by Cardinal, regardless of whether such claim is based upon any of the above stated reasons or otherwise.

Relinquished By: Karime Adame		Date: 6/12/25		Received By: apawo		Phone Result: <input type="checkbox"/> Yes <input type="checkbox"/> No		Add'l Phone #:	
Relinquished By:		Date:		Received By:		Fax Result: <input type="checkbox"/> Yes <input type="checkbox"/> No		Add'l Fax #:	
		Time:				REMARKS: Rush - 24-Hour TAT Include: Chris Straub - chris.straub@tetrattech.com Jorge Fernandez - jorge.fernandez@tetrattech.com			
Delivered By: (Circle One)		-8.42/C40.3-		Sample Condition					
Sampler - UPS - Bus - Other:		-8.12/#140		<input type="checkbox"/> Cool <input type="checkbox"/> Intact <input type="checkbox"/> Yes <input type="checkbox"/> No		<input type="checkbox"/> Yes <input type="checkbox"/> No		Tom@Pimaoil.com	



CHAIN-OF-CUSTODY AND ANALYSIS REQUEST

101 East Marland, Hobbs, NM 88240
(575) 393-2326 FAX (575) 393-2476

Company Name: Tetra Tech				BILL TO				ANALYSIS REQUEST																					
Project Manager: Chuck Terhune				P.O. #:				<div style="display: flex; flex-direction: column; align-items: center;"> <div>BTEX 8021B BTEX 8260B</div> <div>TPH 8015M (GRO+DRO+ORO)</div> <div>Chloride Method 300.0 or SM4500CL-B</div> </div>																					
Address: chuck.terhune@tetrattech.com				Company: Tetra Tech																									
City: State: Zip:				Attn: Chuck Terhune																									
Phone #: (281) 755-8965 Fax #:				Address:																									
Project #: 212C-MD-03883 Project Owner: Maverick Permian				City:																									
Project Name: State F 1 #026				State: Zip:																									
Project Location: Lea County, NM				Phone #:																									
Sampler Name: Jorge Fernandez				Fax #:																									
FOR LAB USE ONLY				MATRIX		PRESERV		SAMPLING																					
Lab I.D.	Sample I.D.	(G)RAB OR (C)OMP.	# CONTAINERS	GROUNDWATER	WASTEWATER	SOIL	OIL	SLUDGE	OTHER:	ACID/BASE:	ICE / COOL	OTHER:	DATE	TIME															
H253482	BH-11 4'	C				X				X			6/11/15	9:06	X	X	X												
11	BH-12 4'													9:11															
12	BH-13 4'													9:13															
13	BH-14 4'													9:17															
14	BH-15 4'													9:20															
15	BH-16 4'													9:25															
16	BH-17 4'													9:32															
17	BH-18 4'													9:38															
18	BH-19 4'													9:46															
19	BH-20 4'													9:50															
20																													

PLEASE NOTE: Liability and Damages. Cardinal's liability and client's exclusive remedy for any claim arising whether based in contract or tort, shall be limited to the amount paid by the client for the analyses. All claims, including those for negligence and any other cause whatsoever shall be deemed waived unless made in writing and received by Cardinal within 30 days after completion of the applicable service. In no event shall Cardinal be liable for incidental or consequential damages, including without limitation, business interruptions, loss of use, or loss of profits incurred by client, its subsidiaries, affiliates or successors arising out of or related to the performance of services hereunder by Cardinal, regardless of whether such claim is based upon any of the above stated reasons or otherwise.

Relinquished By:	Date:	Received By:	Phone Result:	Yes	No	Add'l Phone #:
Karime Adame	6-12-25	apau	Fax Result:	Yes	No	Add'l Fax #:
Relinquished By:	Date:	Received By:	REMARKS:			
			Rush -- 24-Hour TAT			
			Include: Chris Straub - chris.straub@tetrattech.com			
			Jorge Fernandez - jorge.fernandez@tetrattech.com			
Delivered By: (Circle One)	-8.45 / C to B -	Sample Condition	CHECKED BY:			
Sampler - UPS - Bus - Other:	-8.15 / #100	Cool Intact	(Initials)			
		Yes Yes	TOMAS Pina oil.com			
		No No				



CHAIN-OF-CUSTODY AND ANALYSIS REQUEST

101 East Marland, Hobbs, NM 88240
(575) 393-2326 FAX (575) 393-2476

Company Name: Tetra Tech				BILL TO				ANALYSIS REQUEST																						
Project Manager: Chuck Terhune				P.O. #:				<div style="display: flex; justify-content: space-between;"> <div style="writing-mode: vertical-rl; transform: rotate(180deg);">BTEX 8021B BTEX 8260B</div> <div style="writing-mode: vertical-rl; transform: rotate(180deg);">TPH 8015M (GRO+DRO+ORO)</div> <div style="writing-mode: vertical-rl; transform: rotate(180deg);">Chloride Method 300.0 or SM4500CL-B</div> </div>																						
Address: chuck.terhune@tetrattech.com				Company: Tetra Tech																										
City: State: Zip:				Attn: Chuck Terhune																										
Phone #: (281) 755-8965 Fax #:				Address:																										
Project #: 212C-MD-03883 Project Owner: Maverick Permian				City:																										
Project Name: State F 1 #026				State: Zip:																										
Project Location: Lea County, NM				Phone #:																										
Sampler Name: Jorge Fernandez				Fax #:																										
FOR LAB USE ONLY	Lab I.D.	Sample I.D.	(G)RAB OR (C)OMP.	# CONTAINERS	MATRIX					PRESERV		SAMPLING																		
					GROUNDWATER	WASTEWATER	SOIL	OIL	SLUDGE	OTHER	ACID/BASE:	ICE / COOL	OTHER	DATE	TIME															
	H253482	BH-21 4'	C				X					X		6/11/25	9:58	X	X	X												
	21	BH-22 4'													10:08															
	22	BH-23 4'													10:11															
	23	BH-24 4'													10:17															
	24	BH-25 4'													10:23															
	25	BH-26 4'													10:28															
	26	BH-27 4'													10:30															
	27	SW-1													10:37															
	28	SW-2													10:39															
	29	SW-3													10:40															
	30																													

PLEASE NOTE: Liability and Damages. Cardinal's liability and client's exclusive remedy for any claim arising whether based in contract or tort, shall be limited to the amount paid by the client for the analyses. All claims including those for negligence and any other cause whatsoever shall be deemed waived unless made in writing and received by Cardinal within 30 days after completion of the applicable service. In no event shall Cardinal be liable for incidental or consequential damages, including without limitation, business interruptions, loss of use, or loss of profits incurred by client, its subsidiaries, affiliates or successors arising out of or related to the performance of services hereunder by Cardinal, regardless of whether such claim is based upon any of the above stated reasons or otherwise.

Relinquished By:	Date:	Received By:	Phone Result:	<input type="checkbox"/> Yes <input type="checkbox"/> No	Add'l Phone #:
<i>Karime Abame</i>	6/12/25	<i>Chris Straub</i>	Fax Result:	<input type="checkbox"/> Yes <input type="checkbox"/> No	Add'l Fax #:
Relinquished By:	Date:	Received By:	REMARKS:		
			Rush -- 24-Hour TAT		
			Include: Chris Straub - chris.straub@tetrattech.com		
			Jorge Fernandez - jorge.fernandez@tetrattech.com		
Delivered By: (Circle One)	- 8.42 / C40.32	Sample Condition	CHECKED BY:		
Sampler - UPS - Bus - Other:	- 8.12 / #140	Cool Intact	(Initials)		
		<input type="checkbox"/> Yes <input type="checkbox"/> No	<i>JP</i>		
		<input type="checkbox"/> No <input type="checkbox"/> No	Tom@Pima-oil.com		

Please fax written changes to (575) 393-2326



CHAIN-OF-CUSTODY AND ANALYSIS REQUEST

101 East Marland, Hobbs, NM 88240
(575) 393-2326 FAX (575) 393-2476

Company Name: Tetra Tech				BILL TO				ANALYSIS REQUEST																			
Project Manager: Chuck Terhune				P.O. #:				<div style="display: flex; justify-content: space-between;"> <div style="writing-mode: vertical-rl; transform: rotate(180deg);">BTEX 8021B BTEX 8260B</div> <div style="writing-mode: vertical-rl; transform: rotate(180deg);">TPH 8015M (GRO+DRO+ORO)</div> <div style="writing-mode: vertical-rl; transform: rotate(180deg);">Chloride Method 300.0 or SM4500CL-B</div> </div>																			
Address: chuck.terhune@tetrattech.com				Company: Tetra Tech																							
City: State: Zip:				Attn: Chuck Terhune																							
Phone #: (281) 755-8965 Fax #:				Address:																							
Project #: 212C-MD-03883 Project Owner: Maverick Permian				City:																							
Project Name: State F 1 #026				State: Zip:																							
Project Location: Lea County, NM				Phone #:																							
Sampler Name: Jorge Fernandez				Fax #:																							
FOR LAB USE ONLY																											
Lab I.D.	Sample I.D.	(G)RAB OR (C)OMP.	# CONTAINERS	MATRIX					PRESERV.	SAMPLING																	
				GROUNDWATER	WASTEWATER	SOIL	OIL	SLUDGE	OTHER:	ACID/BASE:	ICE / COOL	OTHER:	DATE	TIME													
4253482	SW-4	C				X					X		6/11/25	10:56	X	X	X										
31	SW-5													11:02													
32	SW-9													11:11													
33	SW-10													11:20													
34																											

PLEASE NOTE: Liability and Damages. Cardinal's liability and client's exclusive remedy for any claim arising whether based in contract or tort, shall be limited to the amount paid by the client for the analyses. All claims including those for negligence and any other cause whatsoever shall be deemed waived unless made in writing and received by Cardinal within 30 days after completion of the applicable service. In no event shall Cardinal be liable for incidental or consequential damages, including without limitation, business interruptions, loss of use, or loss of profits incurred by client, its subsidiaries, affiliates or successors arising out of or related to the performance of services hereunder by Cardinal, regardless of whether such claim is based upon any of the above stated reasons or otherwise.

Relinquished By: <u>Karime Adams</u>	Date: <u>6/12/25</u>	Received By: <u>apenas</u>	Phone Result: <input type="checkbox"/> Yes <input type="checkbox"/> No	Add'l Phone #:
Relinquished By:	Date:	Received By:	Fax Result: <input type="checkbox"/> Yes <input type="checkbox"/> No	Add'l Fax #:
Delivered By: (Circle One) <u>-8.40 / C40-32</u>	Time: <u>8:40</u>	Sample Condition: <u>Cool Intact</u>	REMARKS:	
Sampler - UPS - Bus - Other: <u>-8.12 / #140</u>	Time:	Checked By: (Initials) <u>JA</u>	Rush <u>24-Hour TAT</u>	
			Include: Chris Straub - chris.straub@tetrattech.com	
			Jorge Fernandez - jorge.fernandez@tetrattech.com	
			<u>Tom@Pimaoil.com</u>	



PHONE (575) 393-2326 ° 101 E. MARLAND ° HOBBS, NM 88240

June 24, 2025

CHUCK TERHUNE

TETRA TECH

901 WEST WALL STREET , STE 100

MIDLAND, TX 79701

RE: STATE F1 #026

Enclosed are the results of analyses for samples received by the laboratory on 06/23/25 11:52.

Cardinal Laboratories is accredited through Texas NELAP under certificate number TX-C25-00101. Accreditation applies to drinking water, non-potable water and solid and chemical materials. All accredited analytes are denoted by an asterisk (*). For a complete list of accredited analytes and matrices visit the TCEQ website at www.tceq.texas.gov/field/qa/lab_accred_certif.html.

Cardinal Laboratories is accredited through the State of Colorado Department of Public Health and Environment for:

Method EPA 552.2	Haloacetic Acids (HAA-5)
Method EPA 524.2	Total Trihalomethanes (TTHM)
Method EPA 524.4	Regulated VOCs (V1, V2, V3)

Accreditation applies to public drinking water matrices.

This report meets NELAP requirements and is made up of a cover page, analytical results, and a copy of the original chain-of-custody. If you have any questions concerning this report, please feel free to contact me.

Sincerely,

A handwritten signature in black ink that reads "Celey D. Keene". The signature is written in a cursive style with a large, stylized 'C' and 'K'.

Celey D. Keene

Lab Director/Quality Manager



PHONE (575) 393-2326 ° 101 E. MARLAND ° HOBBS, NM 88240

Analytical Results For:

TETRA TECH
 CHUCK TERHUNE
 901 WEST WALL STREET , STE 100
 MIDLAND TX, 79701
 Fax To: (432) 682-3946

Received: 06/23/2025
 Reported: 06/24/2025
 Project Name: STATE F1 #026
 Project Number: 212C-MD-03883
 Project Location: LEA CO NM

Sampling Date: 06/23/2025
 Sampling Type: Soil
 Sampling Condition: Cool & Intact
 Sample Received By: Tamara Oldaker

Sample ID: SW - 5 (H253760-01)

BTX 8021B		mg/kg		Analyzed By: JH					
Analyte	Result	Reporting Limit	Analyzed	Method Blank	BS	% Recovery	True Value QC	RPD	Qualifier
Benzene*	<0.050	0.050	06/23/2025	ND	2.00	100	2.00	5.99	
Toluene*	<0.050	0.050	06/23/2025	ND	1.98	98.8	2.00	2.63	
Ethylbenzene*	<0.050	0.050	06/23/2025	ND	1.99	99.3	2.00	1.68	
Total Xylenes*	<0.150	0.150	06/23/2025	ND	6.16	103	6.00	1.98	
Total BTX	<0.300	0.300	06/23/2025	ND					

Surrogate: 4-Bromofluorobenzene (PID) 118 % 71.5-134

Chloride, SM4500Cl-B		mg/kg		Analyzed By: AC						
Analyte	Result	Reporting Limit	Analyzed	Method Blank	BS	% Recovery	True Value QC	RPD	Qualifier	
Chloride	80.0	16.0	06/23/2025	ND	416	104	400	3.92		

TPH 8015M		mg/kg		Analyzed By: MS					
Analyte	Result	Reporting Limit	Analyzed	Method Blank	BS	% Recovery	True Value QC	RPD	Qualifier
GRO C6-C10*	<10.0	10.0	06/23/2025	ND	212	106	200	13.5	
DRO >C10-C28*	<10.0	10.0	06/23/2025	ND	189	94.3	200	17.0	
EXT DRO >C28-C36	<10.0	10.0	06/23/2025	ND					

Surrogate: 1-Chlorooctane 95.4 % 44.4-145

Surrogate: 1-Chlorooctadecane 92.7 % 40.6-153

Cardinal Laboratories

*=Accredited Analyte

PLEASE NOTE: Liability and Damages. Cardinal's liability and client's exclusive remedy for any claim arising, whether based in contract or tort, shall be limited to the amount paid by client for analyses. All claims, including those for negligence and any other cause whatsoever shall be deemed waived unless made in writing and received by Cardinal within thirty (30) days after completion of the applicable service. In no event shall Cardinal be liable for incidental or consequential damages, including, without limitation, business interruptions, loss of use, or loss of profits incurred by client, its subsidiaries, affiliates or successors arising out of or related to the performance of the services hereunder by Cardinal, regardless of whether such claim is based upon any of the above stated reasons or otherwise. Results relate only to the samples identified above. This report shall not be reproduced except in full with written approval of Cardinal Laboratories.

Celey D. Keene, Lab Director/Quality Manager



PHONE (575) 393-2326 ° 101 E. MARLAND ° HOBBS, NM 88240

Notes and Definitions

QR-04	The RPD for the BS/BSD was outside of historical limits.
ND	Analyte NOT DETECTED at or above the reporting limit
RPD	Relative Percent Difference
**	Samples not received at proper temperature of 6°C or below.
***	Insufficient time to reach temperature.
-	Chloride by SM4500Cl-B does not require samples be received at or below 6°C Samples reported on an as received basis (wet) unless otherwise noted on report

Cardinal Laboratories

*=Accredited Analyte

PLEASE NOTE: Liability and Damages. Cardinal's liability and client's exclusive remedy for any claim arising, whether based in contract or tort, shall be limited to the amount paid by client for analyses. All claims, including those for negligence and any other cause whatsoever shall be deemed waived unless made in writing and received by Cardinal within thirty (30) days after completion of the applicable service. In no event shall Cardinal be liable for incidental or consequential damages, including, without limitation, business interruptions, loss of use, or loss of profits incurred by client, its subsidiaries, affiliates or successors arising out of or related to the performance of the services hereunder by Cardinal, regardless of whether such claim is based upon any of the above stated reasons or otherwise. Results relate only to the samples identified above. This report shall not be reproduced except in full with written approval of Cardinal Laboratories.

A handwritten signature in black ink, appearing to read "Celey D. Keene".

Celey D. Keene, Lab Director/Quality Manager



101 East Marland, Hobbs, NM 88240
(575) 393-2326 FAX (575) 393-2476

CHAIN-OF-CUSTODY AND ANALYSIS REQUEST

Page 4 of 4

Company Name: <u>Tetra Tech</u>		BILL TO		ANALYSIS REQUEST																							
Project Manager: <u>Chris Straub</u>		P.O. #:																									
Address:		Company:																									
City: State: Zip:		Attn:																									
Phone #: Fax #:		Address:																									
Project #: Project Owner:		City:																									
Project Name: <u>State F1 #026</u>		State: Zip:																									
Project Location: <u>Lea Co. NM</u>		Phone #:																									
Sampler Name: <u>AG</u>		Fax #:																									
FOR LAB USE ONLY				MATRIX		PRESERV.		SAMPLING																			
Lab I.D.	Sample I.D.	(G)RAB OR (C)OMP.	# CONTAINERS	GROUNDWATER	WASTEWATER	SOIL	OIL	SLUDGE	OTHER	ACID/BASE:	ICE / COOL	OTHER	DATE	TIME													
<u>H253760</u>	<u>1 SW 5</u>	<u>1</u>				<u>X</u>					<u>X</u>		<u>6/23</u>	<u>1100</u>	<u>X</u>	<u>TPH</u>	<u>Chloride</u>	<u>BTEX</u>									

PLEASE NOTE: Liability and Damages. Cardinal's liability and client's exclusive remedy for any claim arising whether based in contract or tort, shall be limited to the amount paid by the client for the analyses. All claims including those for negligence and any other cause whatsoever shall be deemed waived unless made in writing and received by Cardinal within 30 days after completion of the applicable service. In no event shall Cardinal be liable for incidental or consequential damages, including without limitation, business interruptions, loss of use, or loss of profits incurred by client, its subsidiaries, affiliates or successors arising out of or related to the performance of services hereunder by Cardinal, regardless of whether such claim is based upon any of the above stated reasons or otherwise.

Relinquished By: <u>Celley Keene</u>	Date: <u>6/23</u>	Received By: <u>Thomas Eldridge</u>	Verbal Result: <input type="checkbox"/> Yes <input type="checkbox"/> No Add'l Phone #:
Relinquished By:	Time: <u>1152</u>	Received By:	All Results are emailed. Please provide Email address:
Relinquished By:	Date:	Received By:	REMARKS:
Relinquished By:	Time:	Received By:	
Delivered By: (Circle One)	Observed Temp. °C <u>1.8</u>	Sample Condition Cool Intact <u>X</u>	CHECKED BY: (Initials) <u>YO</u>
Sampler - UPS - Bus - Other:	Corrected Temp. °C <u>2.1</u>	<input type="checkbox"/> Yes <input type="checkbox"/> No	Turnaround Time: Standard <input type="checkbox"/> Rush <input checked="" type="checkbox"/> 24 hr.
			Thermometer ID #140. Correction Factor +0.3°C
			Bacteria (only) Sample Condition Cool Intact Observed Temp. °C
			Corrected Temp. °C

FORM-000 R 3.0 02/12/25

† Cardinal cannot accept verbal changes. Please email changes to celley.keene@cardinallabsnm.com

Remediation Report and Closure Request
State F 1 #026
Incident ID# nAPP2333256523

Maverick Permian LLC
August 21 2025

ATTACHMENT 4 – SEED MIX

NMSLO Seed Mix**Sandy (S)****SANDY (S) SITES SEED MIXTURE:**

COMMON NAME	VARIETY	APPLICATION RATE (PLS/Acre)	DRILL BOX
Grasses:			
Sand bluestem	Elida, VNS, So.	2.0	F
Little bluestem	Cimarron, Pastura	3.0	F
Black grama	VNS, Southern	1.0	D
Sand dropseed	VNS, Southern	4.0	S
Plains bristlegrass	VNS, Southern	2.0	D
Forbs:			
Firewheel (Gaillardia)	VNS, Southern	1.0	D
Annual Sunflower	VNS, Southern	1.0	D
Shrubs:			
Fourwing Saltbush	VNS, Southern	1.0	F
Total PLS/acre		16.0	

S = Small seed drill box, D = Standard seed drill box, F = Fluffy seed drill box
 VNS = Variety Not Stated, PLS = Pure Live Seed

- Seed mixes should be provided in bags separating seed types into the three categories: small (S), standard (D) and fluffy (F).
- VNS, Southern – Seed should be from a southern latitude collection of this species.
- Double seed application rate for broadcast or hydroseeding.
- If one species is not available, contact the SLO for an approved substitute; alternatively the SLO may require other species proportionately increased.
- Additional information on these seed species can be found on the USDA Plants Database website at <http://plants.usda.gov>.



Sante Fe Main Office
Phone: (505) 476-3441

General Information
Phone: (505) 629-6116

Online Phone Directory
<https://www.emnrd.nm.gov/ocd/contact-us>

State of New Mexico
Energy, Minerals and Natural Resources
Oil Conservation Division
1220 S. St Francis Dr.
Santa Fe, NM 87505

QUESTIONS

Action 500615

QUESTIONS

Operator: Maverick Permian LLC 1000 Main Street, Suite 2900 Houston, TX 77002	OGRID: 331199
	Action Number: 500615
	Action Type: [C-141] Remediation Closure Request C-141 (C-141-v-Closure)

QUESTIONS

Prerequisites	
Incident ID (n#)	nAPP2333256523
Incident Name	NAPP2333256523 STATE F-1 #26 FLOWLINE RELEASE @ 30-025-39357
Incident Type	Produced Water Release
Incident Status	Remediation Closure Report Received
Incident Well	[30-025-39357] STATE F 1 #026

Location of Release Source	
<i>Please answer all the questions in this group.</i>	
Site Name	State F-1 #26 Flowline Release
Date Release Discovered	11/25/2023
Surface Owner	State

Incident Details	
<i>Please answer all the questions in this group.</i>	
Incident Type	Produced Water Release
Did this release result in a fire or is the result of a fire	No
Did this release result in any injuries	No
Has this release reached or does it have a reasonable probability of reaching a watercourse	No
Has this release endangered or does it have a reasonable probability of endangering public health	No
Has this release substantially damaged or will it substantially damage property or the environment	No
Is this release of a volume that is or may with reasonable probability be detrimental to fresh water	No

Nature and Volume of Release	
<i>Material(s) released, please answer all that apply below. Any calculations or specific justifications for the volumes provided should be attached to the follow-up C-141 submission.</i>	
Crude Oil Released (bbls) Details	Not answered.
Produced Water Released (bbls) Details	Cause: Corrosion Flow Line - Production Produced Water Released: 15 BBL Recovered: 0 BBL Lost: 15 BBL.
Is the concentration of chloride in the produced water >10,000 mg/l	Yes
Condensate Released (bbls) Details	Not answered.
Natural Gas Vented (Mcf) Details	Not answered.
Natural Gas Flared (Mcf) Details	Not answered.
Other Released Details	Not answered.
Are there additional details for the questions above (i.e. any answer containing Other, Specify, Unknown, and/or Fire, or any negative lost amounts)	On 11/25/2023 the Operator discovered an approximately 15 bbl produced water release resulting from a ruptured flowline. The release affected the adjacent lease road and pasture. During initial response vac-trucks were unable to recover any fluids.

Sante Fe Main Office
Phone: (505) 476-3441

General Information
Phone: (505) 629-6116

Online Phone Directory
<https://www.emnrd.nm.gov/ocd/contact-us>

State of New Mexico
Energy, Minerals and Natural Resources
Oil Conservation Division
1220 S. St Francis Dr.
Santa Fe, NM 87505

QUESTIONS, Page 2

Action 500615

QUESTIONS (continued)

Operator: Maverick Permian LLC 1000 Main Street, Suite 2900 Houston, TX 77002	OGRID: 331199
	Action Number: 500615
	Action Type: [C-141] Remediation Closure Request C-141 (C-141-v-Closure)

QUESTIONS

Nature and Volume of Release (continued)	
Is this a gas only submission (i.e. only significant Mcf values reported)	No, according to supplied volumes this does not appear to be a "gas only" report.
Was this a major release as defined by Subsection A of 19.15.29.7 NMAC	No
Reasons why this would be considered a submission for a notification of a major release	<i>Unavailable.</i>
<i>With the implementation of the 19.15.27 NMAC (05/25/2021), venting and/or flaring of natural gas (i.e. gas only) are to be submitted on the C-129 form.</i>	

Initial Response

The responsible party must undertake the following actions immediately unless they could create a safety hazard that would result in injury.

The source of the release has been stopped	True
The impacted area has been secured to protect human health and the environment	True
Released materials have been contained via the use of berms or dikes, absorbent pads, or other containment devices	True
All free liquids and recoverable materials have been removed and managed appropriately	True
If all the actions described above have not been undertaken, explain why	<i>Not answered.</i>

Per Paragraph (4) of Subsection B of 19.15.29.8 NMAC the responsible party may commence remediation immediately after discovery of a release. If remediation has begun, please prepare and attach a narrative of actions to date in the follow-up C-141 submission. If remedial efforts have been successfully completed or if the release occurred within a lined containment area (see Subparagraph (a) of Paragraph (5) of Subsection A of 19.15.29.11 NMAC), please prepare and attach all information needed for closure evaluation in the follow-up C-141 submission.

I hereby certify that the information given above is true and complete to the best of my knowledge and understand that pursuant to OCD rules and regulations all operators are required to report and/or file certain release notifications and perform corrective actions for releases which may endanger public health or the environment. The acceptance of a C-141 report by the OCD does not relieve the operator of liability should their operations have failed to adequately investigate and remediate contamination that pose a threat to groundwater, surface water, human health or the environment. In addition, OCD acceptance of a C-141 report does not relieve the operator of responsibility for compliance with any other federal, state, or local laws and/or regulations.

I hereby agree and sign off to the above statement	Name: Chuck Terhune Email: chuck.terhune@tetrattech.com Date: 12/05/2023
----------------------------------------------------	-----------------------------------------------------------------------------------------------------

Sante Fe Main Office
Phone: (505) 476-3441

General Information
Phone: (505) 629-6116

Online Phone Directory
<https://www.emnrd.nm.gov/ocd/contact-us>

State of New Mexico
Energy, Minerals and Natural Resources
Oil Conservation Division
1220 S. St Francis Dr.
Santa Fe, NM 87505

QUESTIONS, Page 3

Action 500615

QUESTIONS (continued)

Operator: Maverick Permian LLC 1000 Main Street, Suite 2900 Houston, TX 77002	OGRID: 331199
	Action Number: 500615
	Action Type: [C-141] Remediation Closure Request C-141 (C-141-v-Closure)

QUESTIONS

Site Characterization	
<i>Please answer all the questions in this group (only required when seeking remediation plan approval and beyond). This information must be provided to the appropriate district office no later than 90 days after the release discovery date.</i>	
What is the shallowest depth to groundwater beneath the area affected by the release in feet below ground surface (ft bgs)	Between 100 and 500 (ft.)
What method was used to determine the depth to ground water	Direct Measurement
Did this release impact groundwater or surface water	No
What is the minimum distance, between the closest lateral extents of the release and the following surface areas:	
A continuously flowing watercourse or any other significant watercourse	Between 1 and 5 (mi.)
Any lakebed, sinkhole, or playa lake (measured from the ordinary high-water mark)	Between 1 and 5 (mi.)
An occupied permanent residence, school, hospital, institution, or church	Between 1 and 5 (mi.)
A spring or a private domestic fresh water well used by less than five households for domestic or stock watering purposes	Between 1 and 5 (mi.)
Any other fresh water well or spring	Between 1 and 5 (mi.)
Incorporated municipal boundaries or a defined municipal fresh water well field	Between 1 and 5 (mi.)
A wetland	Between 1 and 5 (mi.)
A subsurface mine	Greater than 5 (mi.)
An (non-karst) unstable area	Greater than 5 (mi.)
Categorize the risk of this well / site being in a karst geology	Low
A 100-year floodplain	Greater than 5 (mi.)
Did the release impact areas not on an exploration, development, production, or storage site	Yes

Remediation Plan	
<i>Please answer all the questions that apply or are indicated. This information must be provided to the appropriate district office no later than 90 days after the release discovery date.</i>	
Requesting a remediation plan approval with this submission	Yes
<i>Attach a comprehensive report demonstrating the lateral and vertical extents of soil contamination associated with the release have been determined, pursuant to 19.15.29.11 NMAC and 19.15.29.13 NMAC.</i>	
Have the lateral and vertical extents of contamination been fully delineated	Yes
Was this release entirely contained within a lined containment area	No
Soil Contamination Sampling: (Provide the highest observable value for each, in milligrams per kilograms.)	
Chloride (EPA 300.0 or SM4500 Cl B)	4120
TPH (GRO+DRO+MRO) (EPA SW-846 Method 8015M)	0
GRO+DRO (EPA SW-846 Method 8015M)	0
BTEX (EPA SW-846 Method 8021B or 8260B)	0
Benzene (EPA SW-846 Method 8021B or 8260B)	0
<i>Per Subsection B of 19.15.29.11 NMAC unless the site characterization report includes completed efforts at remediation, the report must include a proposed remediation plan in accordance with 19.15.29.12 NMAC, which includes the anticipated timelines for beginning and completing the remediation.</i>	
On what estimated date will the remediation commence	06/04/2025
On what date will (or did) the final sampling or liner inspection occur	06/23/2025
On what date will (or was) the remediation complete(d)	06/24/2025
What is the estimated surface area (in square feet) that will be reclaimed	3700
What is the estimated volume (in cubic yards) that will be reclaimed	825
What is the estimated surface area (in square feet) that will be remediated	1500
What is the estimated volume (in cubic yards) that will be remediated	335
<i>These estimated dates and measurements are recognized to be the best guess or calculation at the time of submission and may (be) change(d) over time as more remediation efforts are completed.</i>	
<i>The OCD recognizes that proposed remediation measures may have to be minimally adjusted in accordance with the physical realities encountered during remediation. If the responsible party has any need to significantly deviate from the remediation plan proposed, then it should consult with the division to determine if another remediation plan submission is required.</i>	

Sante Fe Main Office
Phone: (505) 476-3441

General Information
Phone: (505) 629-6116

Online Phone Directory
<https://www.emnrd.nm.gov/ocd/contact-us>

State of New Mexico
Energy, Minerals and Natural Resources
Oil Conservation Division
1220 S. St Francis Dr.
Santa Fe, NM 87505

QUESTIONS, Page 4

Action 500615

QUESTIONS (continued)

Operator: Maverick Permian LLC 1000 Main Street, Suite 2900 Houston, TX 77002	OGRID: 331199
	Action Number: 500615
	Action Type: [C-141] Remediation Closure Request C-141 (C-141-v-Closure)

QUESTIONS

Remediation Plan (continued)	
<i>Please answer all the questions that apply or are indicated. This information must be provided to the appropriate district office no later than 90 days after the release discovery date.</i>	
This remediation will (or is expected to) utilize the following processes to remediate / reduce contaminants:	
<i>(Select all answers below that apply.)</i>	
(Ex Situ) Excavation and off-site disposal (i.e. dig and haul, hydrovac, etc.)	Yes
Which OCD approved facility will be used for off-site disposal	fEEM0112334510 HALFWAY DISPOSAL AND LANDFILL
OR which OCD approved well (API) will be used for off-site disposal	Not answered.
OR is the off-site disposal site, to be used, out-of-state	Not answered.
OR is the off-site disposal site, to be used, an NMED facility	Not answered.
(Ex Situ) Excavation and on-site remediation (i.e. On-Site Land Farms)	Not answered.
(In Situ) Soil Vapor Extraction	Not answered.
(In Situ) Chemical processing (i.e. Soil Shredding, Potassium Permanganate, etc.)	Not answered.
(In Situ) Biological processing (i.e. Microbes / Fertilizer, etc.)	Not answered.
(In Situ) Physical processing (i.e. Soil Washing, Gypsum, Disking, etc.)	Not answered.
Ground Water Abatement pursuant to 19.15.30 NMAC	Not answered.
OTHER (Non-listed remedial process)	Not answered.
<i>Per Subsection B of 19.15.29.11 NMAC unless the site characterization report includes completed efforts at remediation, the report must include a proposed remediation plan in accordance with 19.15.29.12 NMAC, which includes the anticipated timelines for beginning and completing the remediation.</i>	
I hereby certify that the information given above is true and complete to the best of my knowledge and understand that pursuant to OCD rules and regulations all operators are required to report and/or file certain release notifications and perform corrective actions for releases which may endanger public health or the environment. The acceptance of a C-141 report by the OCD does not relieve the operator of liability should their operations have failed to adequately investigate and remediate contamination that pose a threat to groundwater, surface water, human health or the environment. In addition, OCD acceptance of a C-141 report does not relieve the operator of responsibility for compliance with any other federal, state, or local laws and/or regulations.	
I hereby agree and sign off to the above statement	Name: Chuck Terhune Title: Program Manager Email: chuck.terhune@tetrattech.com Date: 09/03/2025
<i>The OCD recognizes that proposed remediation measures may have to be minimally adjusted in accordance with the physical realities encountered during remediation. If the responsible party has any need to significantly deviate from the remediation plan proposed, then it should consult with the division to determine if another remediation plan submission is required.</i>	

Sante Fe Main Office
Phone: (505) 476-3441

General Information
Phone: (505) 629-6116

Online Phone Directory
<https://www.emnrd.nm.gov/ocd/contact-us>

State of New Mexico
Energy, Minerals and Natural Resources
Oil Conservation Division
1220 S. St Francis Dr.
Santa Fe, NM 87505

QUESTIONS, Page 5

Action 500615

QUESTIONS (continued)

Operator: Maverick Permian LLC 1000 Main Street, Suite 2900 Houston, TX 77002	OGRID: 331199
	Action Number: 500615
	Action Type: [C-141] Remediation Closure Request C-141 (C-141-v-Closure)

QUESTIONS

Deferral Requests Only	
Only answer the questions in this group if seeking a deferral upon approval this submission. Each of the following items must be confirmed as part of any request for deferral of remediation.	
Requesting a deferral of the remediation closure due date with the approval of this submission	No

Sante Fe Main Office
Phone: (505) 476-3441

General Information
Phone: (505) 629-6116

Online Phone Directory
<https://www.emnrd.nm.gov/ocd/contact-us>

State of New Mexico
Energy, Minerals and Natural Resources
Oil Conservation Division
1220 S. St Francis Dr.
Santa Fe, NM 87505

QUESTIONS, Page 6

Action 500615

QUESTIONS (continued)

Operator: Maverick Permian LLC 1000 Main Street, Suite 2900 Houston, TX 77002	OGRID: 331199
	Action Number: 500615
	Action Type: [C-141] Remediation Closure Request C-141 (C-141-v-Closure)

QUESTIONS

Sampling Event Information	
Last sampling notification (C-141N) recorded	477104
Sampling date pursuant to Subparagraph (a) of Paragraph (1) of Subsection D of 19.15.29.12 NMAC	06/23/2025
What was the (estimated) number of samples that were to be gathered	4
What was the sampling surface area in square feet	800

Remediation Closure Request	
<i>Only answer the questions in this group if seeking remediation closure for this release because all remediation steps have been completed.</i>	
Requesting a remediation closure approval with this submission	Yes
Have the lateral and vertical extents of contamination been fully delineated	Yes
Was this release entirely contained within a lined containment area	No
All areas reasonably needed for production or subsequent drilling operations have been stabilized, returned to the sites existing grade, and have a soil cover that prevents ponding of water, minimizing dust and erosion	Yes
What was the total surface area (in square feet) remediated	1500
What was the total volume (cubic yards) remediated	335
All areas not reasonably needed for production or subsequent drilling operations have been reclaimed to contain a minimum of four feet of non-waste contain earthen material with concentrations less than 600 mg/kg chlorides, 100 mg/kg TPH, 50 mg/kg BTEX, and 10 mg/kg Benzene	Yes
What was the total surface area (in square feet) reclaimed	3700
What was the total volume (in cubic yards) reclaimed	825
Summarize any additional remediation activities not included by answers (above)	Roadway was remediated and restored, the pasture was reclaimed
<i>The responsible party must attach information demonstrating they have complied with all applicable closure requirements and any conditions or directives of the OCD. This demonstration should be in the form of a comprehensive report (in .pdf format) including a scaled site map, sampling diagrams, relevant field notes, photographs of any excavation prior to backfilling, laboratory data including chain of custody documents of final sampling, and a narrative of the remedial activities. Refer to 19.15.29.12 NMAC.</i>	
I hereby certify that the information given above is true and complete to the best of my knowledge and understand that pursuant to OCD rules and regulations all operators are required to report and/or file certain release notifications and perform corrective actions for releases which may endanger public health or the environment. The acceptance of a C-141 report by the OCD does not relieve the operator of liability should their operations have failed to adequately investigate and remediate contamination that pose a threat to groundwater, surface water, human health or the environment. In addition, OCD acceptance of a C-141 report does not relieve the operator of responsibility for compliance with any other federal, state, or local laws and/or regulations. The responsible party acknowledges they must substantially restore, reclaim, and re-vegetate the impacted surface area to the conditions that existed prior to the release or their final land use in accordance with 19.15.29.13 NMAC including notification to the OCD when reclamation and re-vegetation are complete.	
I hereby agree and sign off to the above statement	Name: Chuck Terhune Title: Program Manager Email: chuck.terhune@tetrattech.com Date: 09/03/2025

Sante Fe Main Office
Phone: (505) 476-3441

General Information
Phone: (505) 629-6116

Online Phone Directory
<https://www.emnrd.nm.gov/ocd/contact-us>

State of New Mexico
Energy, Minerals and Natural Resources
Oil Conservation Division
1220 S. St Francis Dr.
Santa Fe, NM 87505

QUESTIONS, Page 7

Action 500615

QUESTIONS (continued)

Operator: Maverick Permian LLC 1000 Main Street, Suite 2900 Houston, TX 77002	OGRID: 331199
	Action Number: 500615
	Action Type: [C-141] Remediation Closure Request C-141 (C-141-v-Closure)

QUESTIONS

Reclamation Report	
Only answer the questions in this group if all reclamation steps have been completed.	
Requesting a reclamation approval with this submission	No

Sante Fe Main Office
Phone: (505) 476-3441

General Information
Phone: (505) 629-6116

Online Phone Directory
<https://www.emnrd.nm.gov/oed/contact-us>

State of New Mexico
Energy, Minerals and Natural Resources
Oil Conservation Division
1220 S. St Francis Dr.
Santa Fe, NM 87505

CONDITIONS

Action 500615

CONDITIONS

Operator: Maverick Permian LLC 1000 Main Street, Suite 2900 Houston, TX 77002	OGRID: 331199
	Action Number: 500615
	Action Type: [C-141] Remediation Closure Request C-141 (C-141-v-Closure)

CONDITIONS

Created By	Condition	Condition Date
nvez	None	9/16/2025