



October 17, 2025

District Supervisor  
Oil Conservation Division, District 2  
506 W. Texas  
Artesia, New Mexico 88210

**Re: Closure Request  
J R Oil, Ltd. Co.  
Learcy McBuffington #008 Release  
Unit Letter N, Section 13, Township 25 South, Range 37 East  
Lea County, New Mexico  
Incident ID# NLWH0117156550**

Sir or Madam,

Tetra Tech, Inc. (Tetra Tech) was contacted by J R Oil, Ltd. Co. (JR Oil) to evaluate a historical release associated with the Learcy McBuffington #008 well (API# 30-025-11569). The release footprint is located in Public Land Survey System (PLSS) Unit Letter N, Section 13, Township 25 South, Range 37 East, in Lea County, New Mexico (Site). The approximate well location is shown on Figures 1 and 2.

The Learcy McBuffington #008 well is an active oil well that has been operated by JR Oil since March 2021. At the time of this historical release, the well was operated by ARCH PETROLEUM INC (Arch). Ownership of the well was transferred to POGO PRODUCING CO (Pogo) in January of 2006 and then to OXY USA INC (Oxy) in March of 2008, before transferring to JR Oil in March of 2021.

## BACKGROUND

According to the State of New Mexico Oil Conservation Division (NMOCD) permitting website, the release was discovered on June 20, 2001. The release occurred as a result of a failure of equipment adjacent to the well. There is no C-141 document available in the NMOCD online incident files, nor are there recorded volumes lost or recovered for this release incident. A single incident detail available in the NMOCD online permitting files from the time of the release is a note dated June 20, 2001 that indicates the release area is characterized by an oil stain that was covered up. The NMOCD assigned the release the Incident ID NLWH0117156550. Based on information gathered in correspondence between Tetra Tech and JR Oil, the release footprint was east of the pumping unit.

A cursory review of historical aerial imagery was performed to locate any indications of a release after the reported discovery date. Aerial imagery was not available for the year of 2001; thus, the next available imagery was selected for review. Although the quality of the 2004 imagery is poor, it was reviewed in a good faith effort to locate any evidence for a previous release. An inferred release point and release extent were identified based on the cursory aerial imagery review. The coordinates of the inferred release point are 32.123973°, -103.118736°. The inferred release point and release extent are shown in Figure 3.

Tetra Tech

901 West Wall St., Suite 100, Midland, TX 79701

Tel 432.682.4559

Fax 432.682.3946

www.tetrattech.com

Closure Request  
October 17, 2025

J R Oil, Ltd. Co.

## LAND OWNERSHIP

According to the NMOCD Oil and Gas Map, the Site is located on land owned by a private, independent, party.

## SITE CHARACTERIZATION

A site characterization was performed and no sinkholes, residences, schools, hospitals, institutions, churches, springs, private domestic water wells, playa lakes, stream bodies, wetlands, incorporated municipal boundaries, subsurface mines, or floodplains are located within the distances specified in 19.15.29 New Mexico Administrative Code (NMAC). The Site is in an area of low karst potential.

According to the New Mexico Office of the State Engineers (NMOSE) reporting system, there are four wells within 0.5 mile (800 meters) of the Site with available water level data. Based on the available data, the average depth to groundwater is estimated at 341 feet below ground surface (bgs). Based on the available water well data collected, two wells were drilled to no more than 150 feet bgs. Based on the depth to water data collected from these two wells, the average depth to groundwater is established at 61.5 feet bgs. The site characterization data is included as Appendix A.

## REGULATORY FRAMEWORK

Based upon the release footprint location (on-pad and in areas immediately under or around production equipment) and in accordance with Subsection E of 19.15.29.12 NMAC, per 19.15.29.11 NMAC, the site characterization data was used in attempt to determine recommended remedial action levels (RRALs) for benzene, toluene, ethylbenzene, and xylene (collectively referred to as BTEX), total petroleum hydrocarbons (TPH), and chlorides in soil.

Based on the site characterization and in accordance with Table I of 19.15.29.12 NMAC, the RRALs for the Site are as follows:

Constituent	Site RRALs
Chloride	10,000 mg/kg
TPH (GRO+DRO+MRO)	2,500 mg/kg
GRO+DRO	1,000 mg/kg
BTEX	50 mg/kg
Benzene	10 mg/kg

Additionally, in accordance with the NMOCD guidance *Procedures for Implementation of the Spill Rule (19.15.29 NMAC)* (September 6, 2019), the following reclamation requirements for surface soils (0-4 feet bgs) outside of active oil and gas operations are as follows:

Constituent	Reclamation Requirements
Chloride	600 mg/kg
TPH (GRO+DRO+ORO)	100 mg/kg

## SITE VISIT

On May 6, 2024, Tetra Tech personnel were onsite to assess and document current Site conditions and collect photographic documentation, as well as note any observable impact within the inferred release

Closure Request  
October 17, 2025

J R Oil, Ltd. Co.

extent. The Learcy McBuffington #008 lease pad consists of an approximate 175-foot by 250-foot active pad area. The active pumping unit was located on the north side of the well pad. Two oil-gas lease roads provide access to the well pad, connecting on the northwest and northeast corners of the pad. In the southern section of the pad, re-vegetation had taken place covering an area of approximately 50-foot by 175-foot and 110-foot by 50-foot of the pad surface.

During the site visit, the area of the inferred release extent was surveyed to locate any observable staining or indications of remaining impact. No observable impact or visual indications of staining were found within the inferred release extent. Tetra Tech subsequently collected soil samples from the area within the inferred release extent and performed on-site soil screening with an ex-stick and PID to determine if there was any indication of the presence of remaining impact. Soil screening results associated with samples collected within the inferred release extent indicated no remaining impact within the upper four feet of the ground surface.

### **CANCELLATION REQUEST**

Following the site visit and discussions between JR Oil and Tetra Tech, a cancellation request (C-141C) was submitted to the NMOCD permitting portal for the subject line incident (NLWH0117156550). The cancellation request was submitted based on the fact that there were no volumes associated with the incident, lack of documentation regarding the incident, and lack of initial C-141 document. The cancellation request was denied by the NMOCD on July 21, 2025 with the following comment: "Referring to the notes by Buddy Hill on 2001, the covered up oil stain area is required to be delineated and remediated pursuant to 19.15.29.12 and 13 NMAC. Submit a remediation plan to the OCD by 10/20/2025." The cancellation request and NMOCD response are on record in the NMOCD permitting portal. Thus, based on the denial of the cancellation request, JR Oil made plans to execute an assessment of the inferred release extent.

### **SITE ASSESSMENT**

JR Oil personnel were on site on August 8, 2025, to install four hand auger borings (AH-1 through AH-4) within the inferred release extent to a maximum depth of 4 feet bgs. The assessment sampling locations are indicated on Figure 3. Photographic documentation of the inferred release extent is included in Appendix B.

A total of sixteen (16) soil samples were collected from the four boring locations. The collected samples were transferred under chain of custody and analyzed within appropriate holding times by Cardinal Laboratories (Cardinal). The soil samples were analyzed for TPH via Method 8015 Modified, chloride via Method SM4500Cl-B, and BTEX via Method 8021B. A copy of the laboratory analytical report and chain-of-custody documentation are included in Appendix C.

Results from the August 8, 2025 soil sampling event are summarized in Table 1. All analytical results associated with soil samples collected from boring locations installed during the August 8, 2025 assessment were below the applicable Site RRALs and reclamation requirements for chlorides, TPH, and BTEX.

Closure Request  
October 17, 2025

J R Oil, Ltd. Co.

## CONCLUSION

Based on the results of the August 2025 assessment sampling, J R Oil, Ltd. Co. respectfully requests closure for this subject line incident. According to the NMOCD permitting website, there are no volumes associated with this release incident. Based on the site visit, there is no visual indication of any remaining impact associated with the subject line incident release NLWH0117156550. The August 2025 soil assessment demonstrated no remaining impact as the laboratory analytical results associated with collected soil samples were below the applicable Site RRALs and reclamation requirements for chlorides, TPH, and BTEX. In all likelihood, the incident was addressed by the previous operator but was not reported. Thus, JR Oil, Ltd. Co. respectfully requests closure of incident ID NLWH0117156550.

If you have any questions concerning the assessment activities for the Site, please call me at (509) 768-2191.

Sincerely,

**Tetra Tech, Inc.**



Sam Chama, P.G.  
Project Manager



Samantha Abbott, P.G.  
Senior Project Manager



Closure Request  
October 17, 2025

J R Oil, Ltd. Co.

---

## LIST OF ATTACHMENTS

### Figures:

- Figure 1 – Overview Map
- Figure 2 – Topographic Map
- Figure 3 – Site Assessment Map

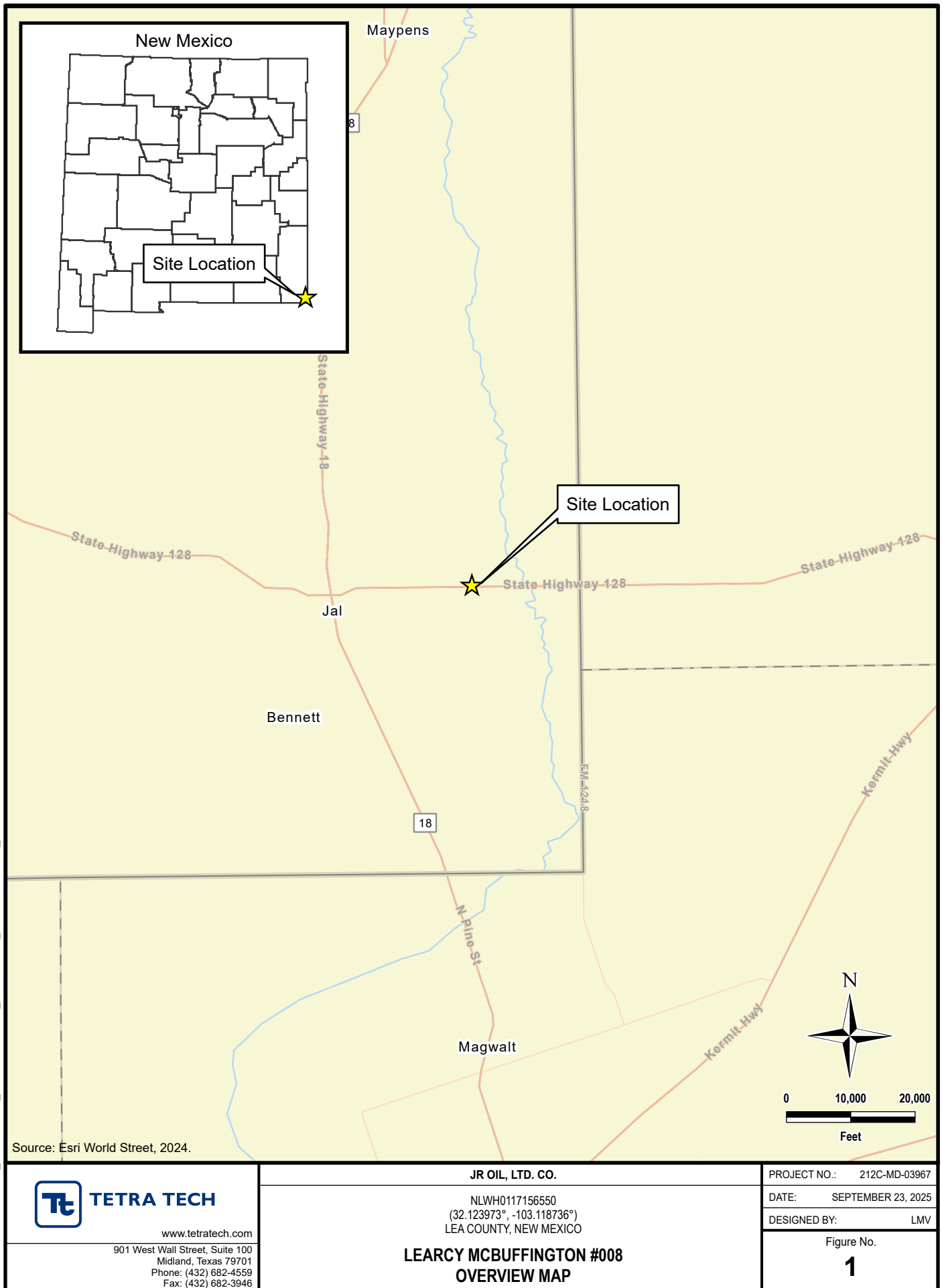
### Tables:

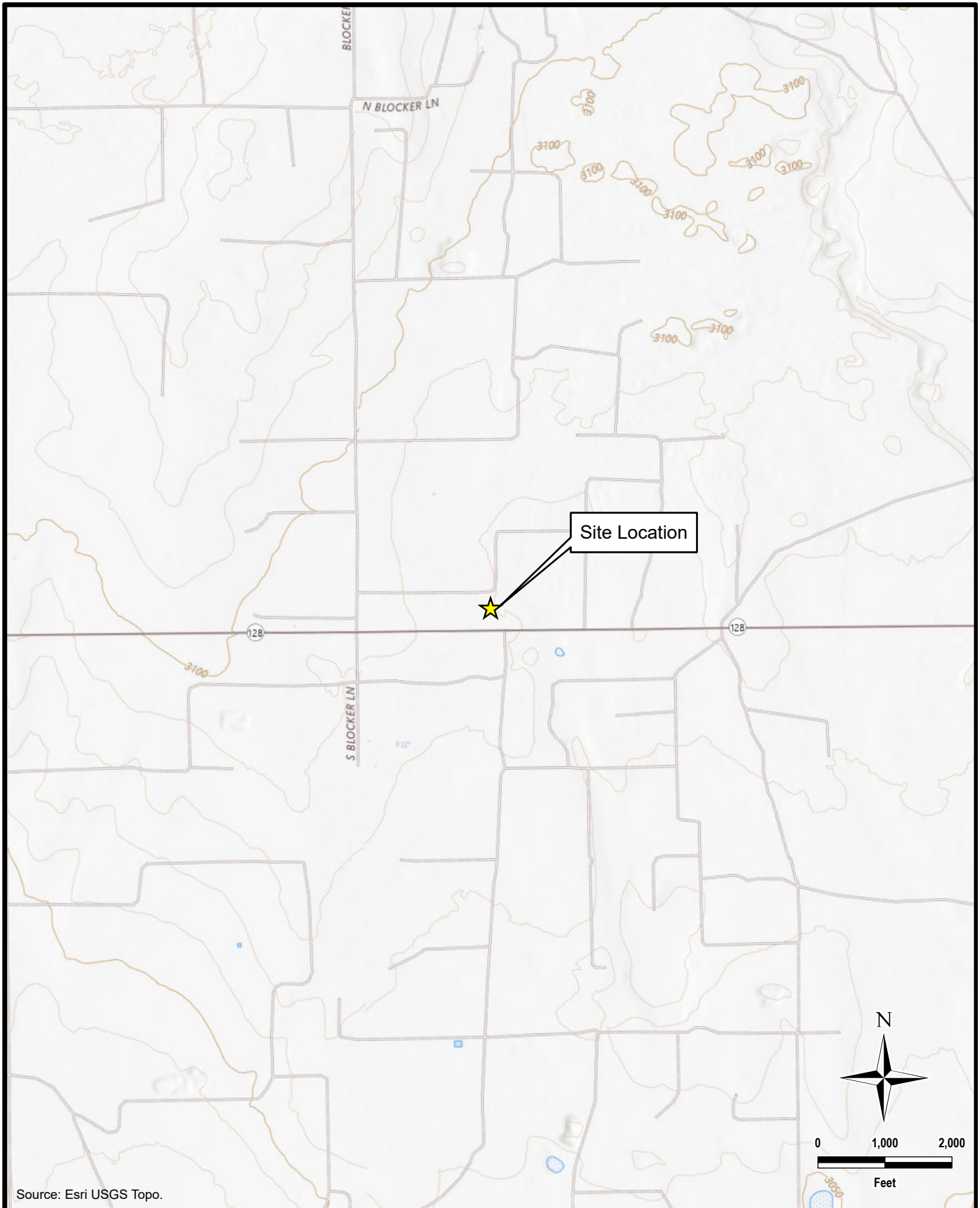
- Table 1 – 2025 Soil Assessment – NLWH0117156550

### Appendices:


- Appendix A – Site Characterization Data
- Appendix B – Photographic Documentation
- Appendix C – Laboratory Analytical Data

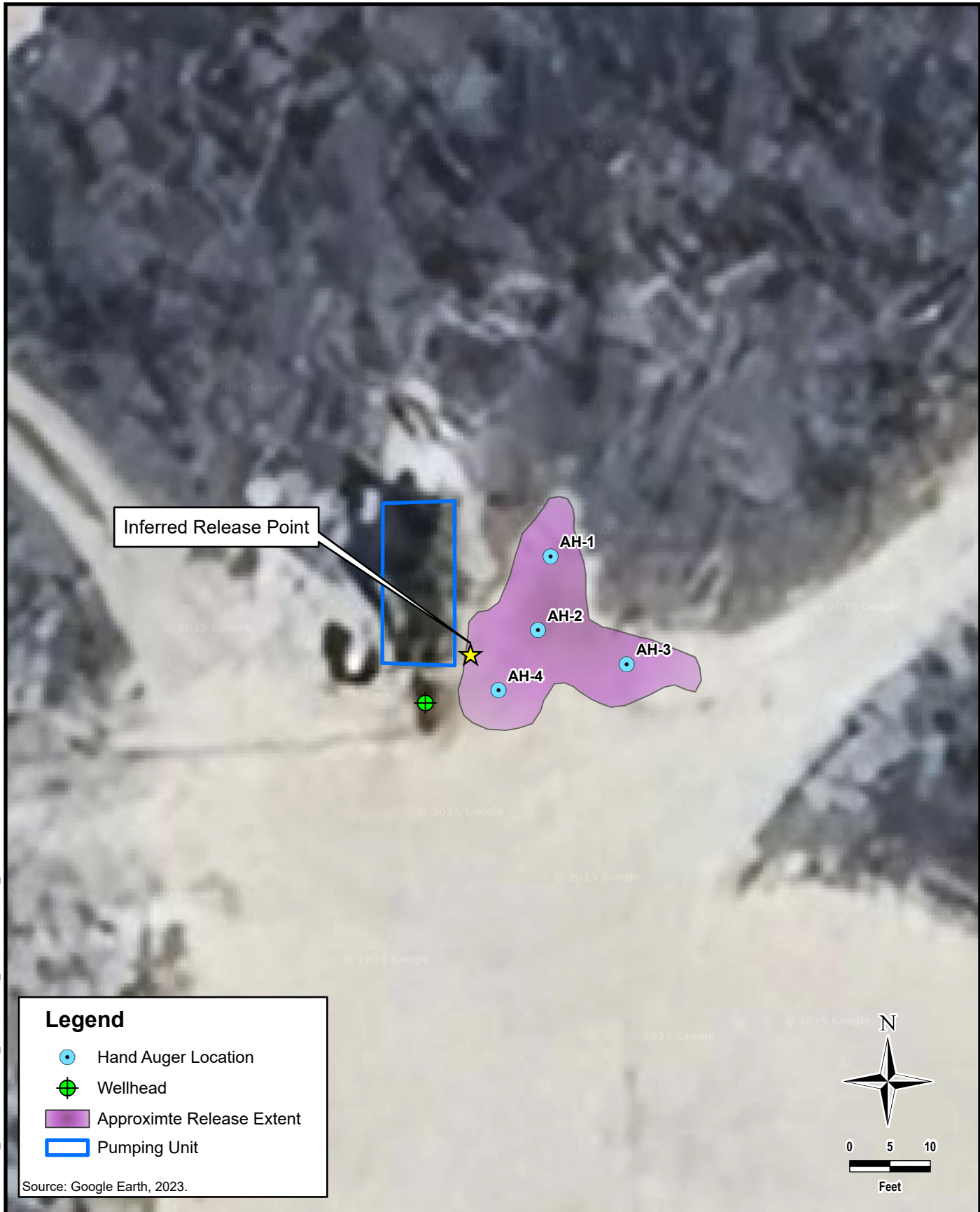
## **FIGURES**





DOCUMENT PATH: Y:\JR\_OIL\LEARCY\_MCBUFFINGTON\_008\LEARCY\_MCBUFFINGTON\_008.APRX

<div>TETRA TECH</div> <div>www.tetrattech.com</div> <div>901 West Wall Street, Suite 100 Midland, Texas 79701 Phone: (432) 682-4559 Fax: (432) 682-3946</div>	JR OIL, LTD. CO.	PROJECT NO.: 212C-MD-03967
	NLWH0117156550 (32.123973°, -103.118736°) LEA COUNTY, NEW MEXICO	DATE: SEPTEMBER 23, 2025
	LEARCY MCBUFFINGTON #008 TOPOGRAPHIC MAP	DESIGNED BY: LMV
		Figure No. <b>2</b>



DOCUMENT PATH: Y:\JR\_OIL\LEARCY\_MCBUFFINGTON\_008\LEARCY\_MCBUFFINGTON\_008.APRX

**Legend**

- Hand Auger Location
- ⊕ Wellhead
- Approximate Release Extent
- Pumping Unit

Source: Google Earth, 2023.



**TETRA TECH**

[www.tetrattech.com](http://www.tetrattech.com)

901 West Wall Street, Suite 100  
Midland, Texas 79701  
Phone: (432) 682-4559  
Fax: (432) 682-3946

JR OIL, LTD. CO.

NLWH0117156550  
(32.123973°, -103.118736°)  
LEA COUNTY, NEW MEXICO

**LEARCY MCBUFFINGTON #008  
SITE ASSESSMENT MAP**

PROJECT NO.: 212C-MD-03967

DATE: SEPTEMBER 23, 2025

DESIGNED BY: LMV

Figure No.

**3**

## **TABLES**

TABLE 1  
SUMMARY OF ANALYTICAL RESULTS  
2025 SOIL ASSESSMENT - NLWH0117156550  
JR Oil Ltd.  
Learcy McBuffington #008  
LEA COUNTY, NM

Sample ID	Sample Date	Sample Depth	Chloride <sup>1</sup>		BTEX <sup>2</sup>										TPH <sup>3</sup>							
					Benzene		Toluene		Ethylbenzene		Total Xylenes		Total BTEX		GRO		DRO		EXT DRO		Total TPH (GRO+DRO+EXT DRO)	
															C <sub>6</sub> - C <sub>10</sub>		> C <sub>10</sub> - C <sub>28</sub>		> C <sub>28</sub> - C <sub>36</sub>			
		ft. bgs	mg/kg	Q	mg/kg	Q	mg/kg	Q	mg/kg	Q	mg/kg	Q	mg/kg	Q	mg/kg	Q	mg/kg	Q	mg/kg	Q		
AH-1	8/8/2025	0-1'	<16.0		<0.050		<0.050		<0.050		<0.150		<0.300		<10.0		<10.0		<10.0			
	8/8/2025	1'-2'	<16.0		<0.050		<0.050		<0.050		<0.150		<0.300		<10.0		<10.0		<10.0			
	8/8/2025	2'-3'	<16.0		<0.050		<0.050		<0.050		<0.150		<0.300		<10.0		<10.0		<10.0			
	8/8/2025	3'-4'	<16.0		<0.050		<0.050		<0.050		<0.150		<0.300		<10.0		<10.0		<10.0			
AH-2	8/8/2025	0-1'	<16.0		<0.050		<0.050		<0.050		<0.150		<0.300		<10.0		<10.0		<10.0			
	8/8/2025	1'-2'	<16.0		<0.050		<0.050		<0.050		<0.150		<0.300		<10.0		<10.0		<10.0			
	8/8/2025	2'-3'	<16.0		<0.050		<0.050		<0.050		<0.150		<0.300		<10.0		<10.0		<10.0			
	8/8/2025	3'-4'	<16.0		<0.050		<0.050		<0.050		<0.150		<0.300		<10.0		<10.0		<10.0			
AH-3	8/8/2025	0-1'	<16.0		<0.050		<0.050		<0.050		<0.150		<0.300		<10.0		<10.0		<10.0			
	8/8/2025	1'-2'	32.0		<0.050		<0.050		<0.050		<0.150		<0.300		<10.0		<10.0		<10.0			
	8/8/2025	2'-3'	32.0		<0.050		<0.050		<0.050		<0.150		<0.300		<10.0		<10.0		<10.0			
	8/8/2025	3'-4'	32.0		<0.050		<0.050		<0.050		<0.150		<0.300		<10.0		<10.0		<10.0			
AH-4	8/8/2025	0-1'	<16.0		<0.050		<0.050		<0.050		<0.150		<0.300		<10.0		<10.0		<10.0			
	8/8/2025	1'-2'	80.0		<0.050		<0.050		<0.050		<0.150		<0.300		<10.0		<10.0		<10.0			
	8/8/2025	2'-3'	160.0		<0.050		<0.050		<0.050		<0.150		<0.300		<10.0		<10.0		<10.0			
	8/8/2025	3'-4'	80.0		<0.050		<0.050		<0.050		<0.150		<0.300		<10.0		<10.0		<10.0			

## NOTES:

ft. Feet  
bgs Below ground surface  
mg/kg Milligrams per kilogram  
TPH Total Petroleum Hydrocarbons  
GRO Gasoline range organics  
DRO Diesel range organics  
1 Method SM4500Cl-B  
2 Method 8021B  
3 Method 8015M

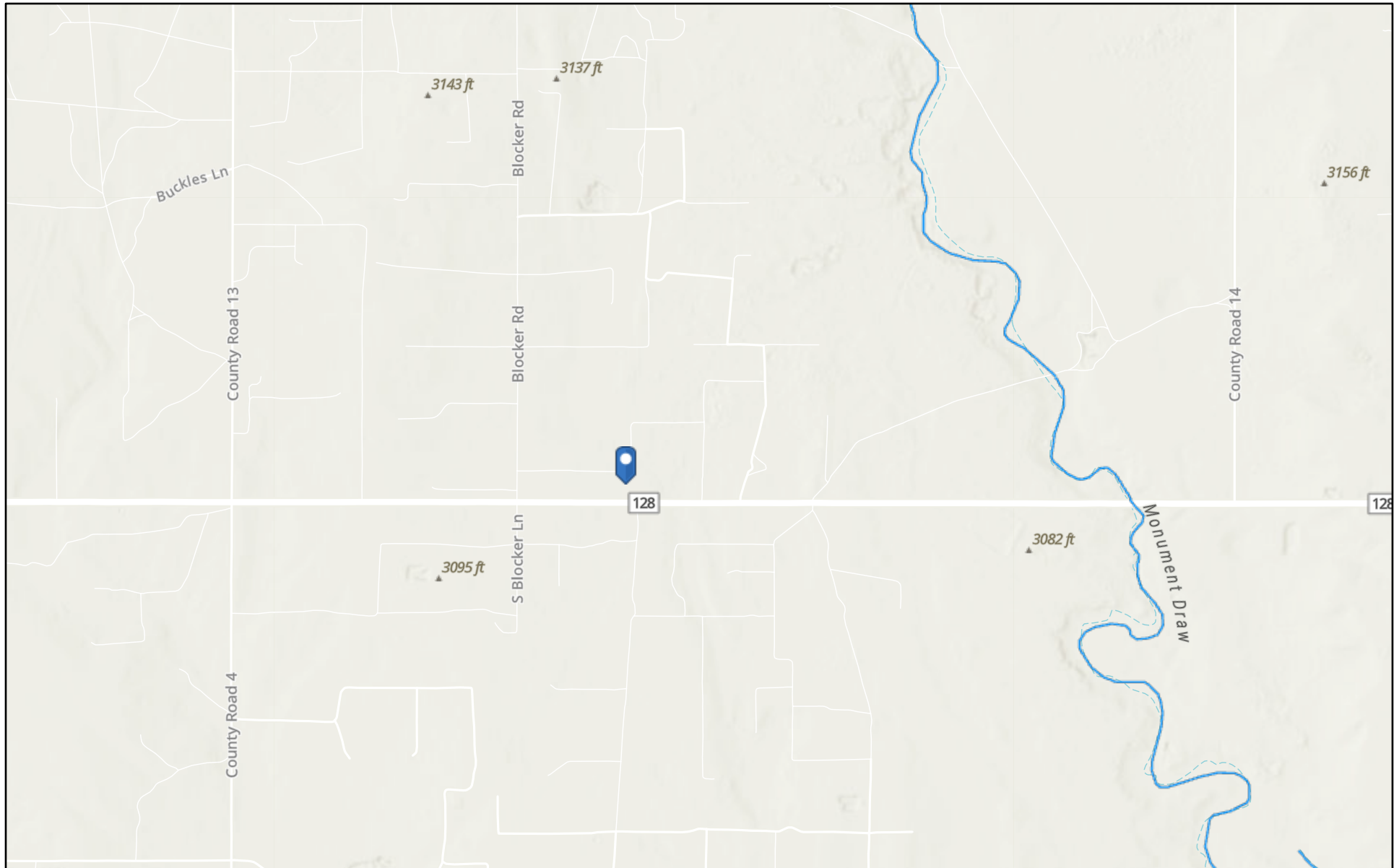
***Bold and italicized values indicate exceedance of Site Reclamation Limits.***

## **APPENDIX A**

### **Site Characterization Data**

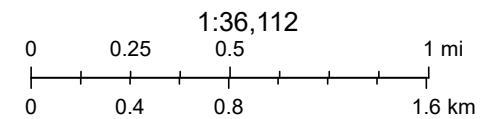


## OCD Water Bodies



9/17/2025, 4:45:45 PM

— OSE Streams



Esri, NASA, NGA, USGS, FEMA, Sources: Esri, TomTom, Garmin, FAO, NOAA, USGS, © OpenStreetMap contributors, and the GIS User Community,

New Mexico Oil Conservation Division



New Mexico Office of the State Engineer

Water Column/Average Depth to Water

(A CLW##### in the POD suffix indicates the POD has been replaced & no longer serves a water right file.)

(R=POD has been replaced, O=orphaned, C=the file is closed)

(quarters are smallest to largest)

POD Number	Code	Sub basin	County	Q64	Q16	Q4	Sec	Tws	Range	X	Y	Map	(meters)	(In feet)		
													Distance	Well Depth	Depth Water	Water Column
<a href="#">CP 00783 POD1</a>		CP	LE	NW	NE	NW	24	25S	37E	677372.0	3555519.0 *		229	4500	728	3772
<a href="#">CP 00258 POD1</a>		CP	LE	SW	SW	SE	13	25S	37E	677767.0	3555728.0 *		296	120	73	47
<a href="#">CP 00261 POD2</a>		CP	LE	NW	SW	SE	13	25S	37E	677767.0	3555928.0 *		358	95	50	45
<a href="#">CP 00782 POD1</a>		CP	LE	NE	NW	NW	24	25S	37E	677170.0	3555512.0 *		369	7090	515	6575

Average Depth to Water: 341 feet

Minimum Depth: 50 feet

Maximum Depth: 728 feet

Record Count: 4

Basin/County Search:

County: LE

UTM Filters (in meters):

Easting: 677470.75

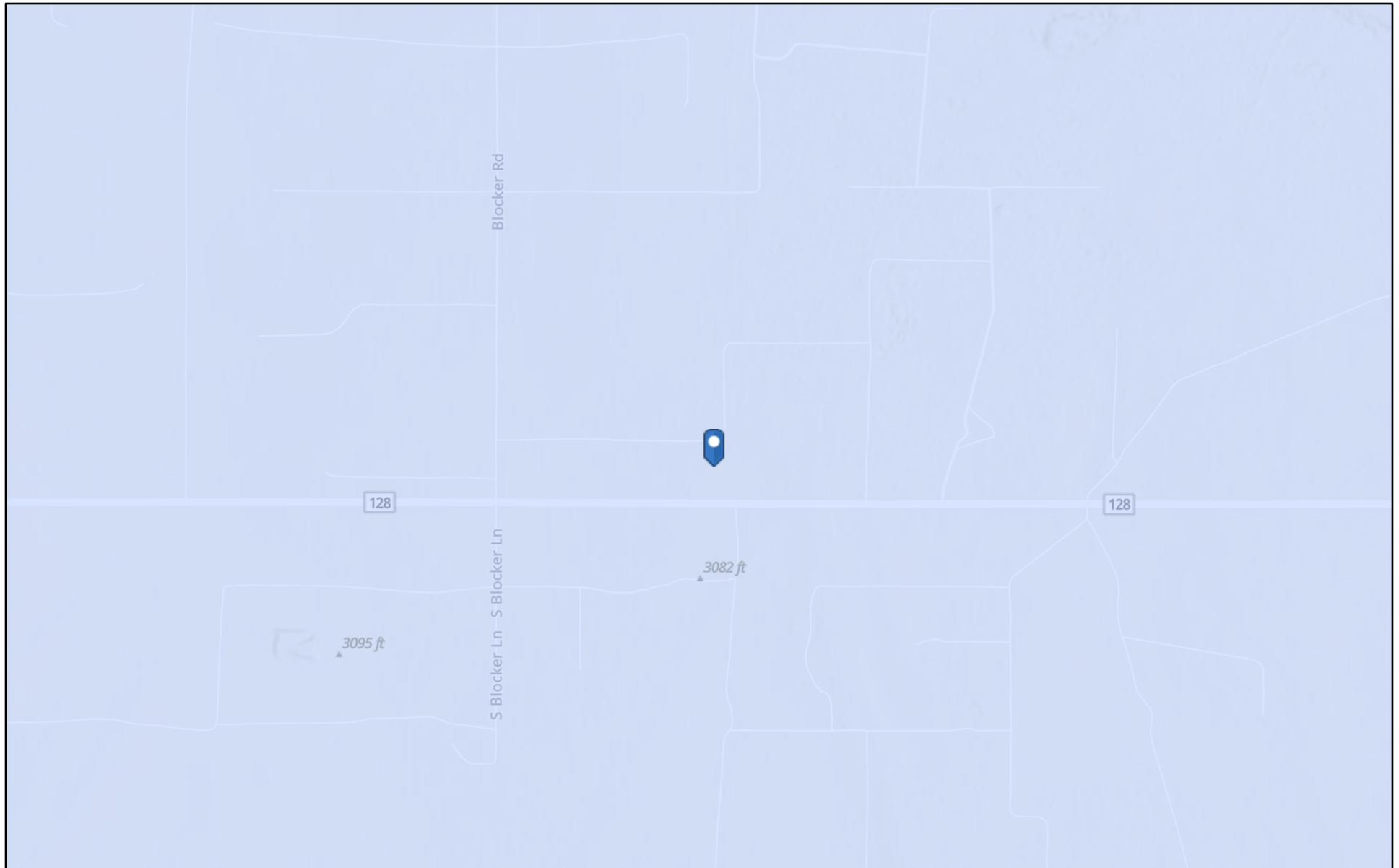
Northing: 3555726.35

Radius: 800

\* UTM location was derived from PLSS - see Help

The data is furnished by the NMOSE/ISC and is accepted by the recipient with the expressed understanding that the OSE/ISC make no warranties, expressed or implied, concerning the accuracy, completeness, reliability, usability, or suitability for any particular purpose of the data.

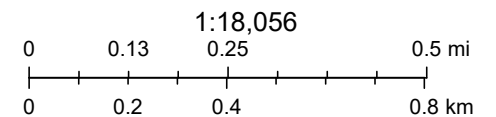
# OCD Karst Areas



9/17/2025, 4:48:27 PM

Karst Occurrence Potential

Low



BLM, OCD, New Mexico Tech, Esri, NASA, NGA, USGS, FEMA, Sources: Esri, TomTom, Garmin, FAO, NOAA, USGS, © OpenStreetMap contributors,

New Mexico Oil Conservation Division





## National Wetlands Inventory map



September 18, 2025

**Wetlands**

- Estuarine and Marine Deepwater
- Estuarine and Marine Wetland

- Freshwater Emergent Wetland
- Freshwater Forested/Shrub Wetland
- Freshwater Pond

- Lake
- Other
- Riverine

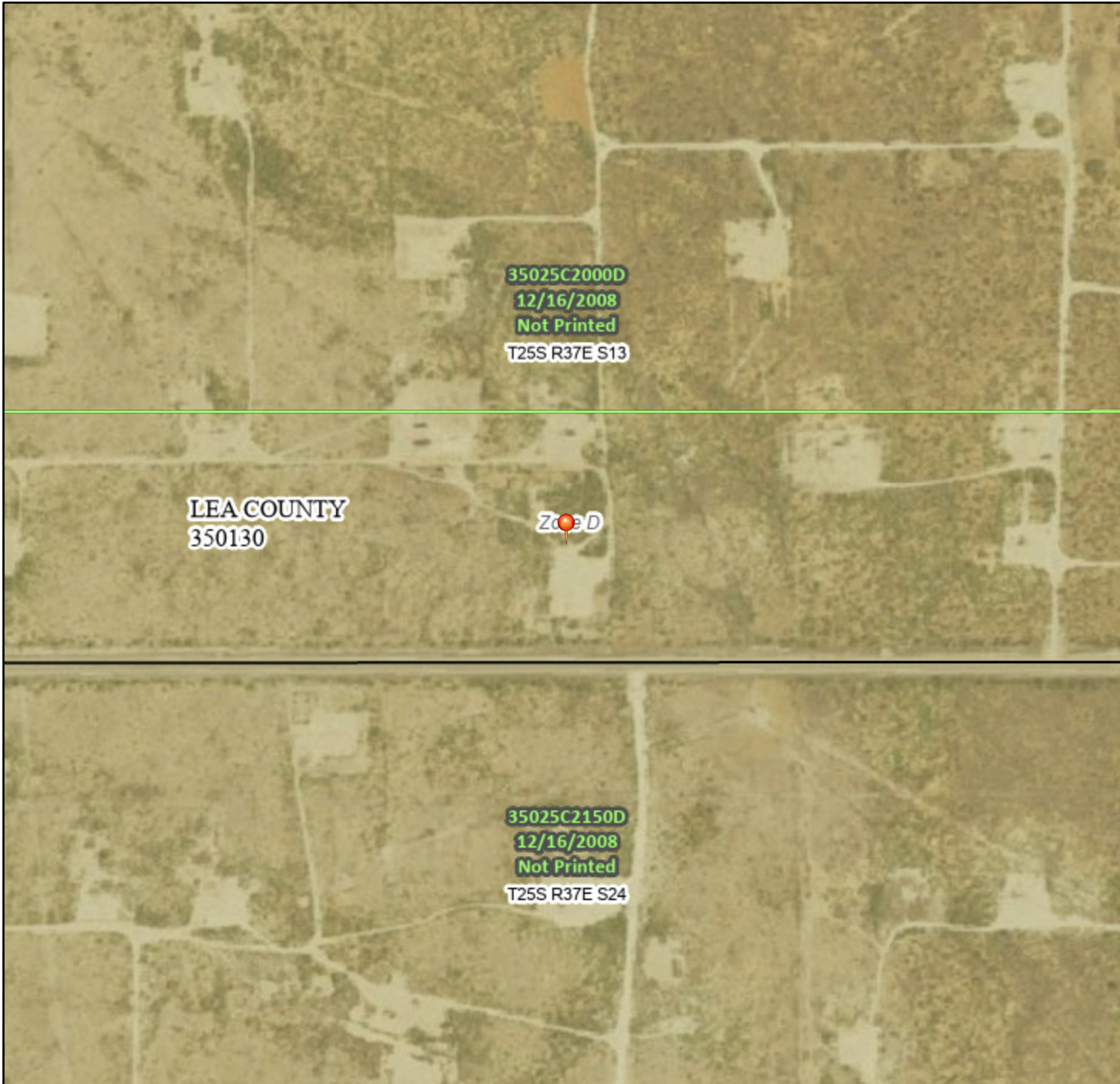
This map is for general reference only. The US Fish and Wildlife Service is not responsible for the accuracy or currentness of the base data shown on this map. All wetlands related data should be used in accordance with the layer metadata found on the Wetlands Mapper web site.



# National Flood Hazard Layer FIRMMette



103°7'26"W 32°7'42"N



0 250 500 1,000 1,500 2,000 Feet

1:6,000

103°6'49"W 32°7'11"N

## Legend

SEE FIS REPORT FOR DETAILED LEGEND AND INDEX MAP FOR FIRM PANEL LAYOUT

SPECIAL FLOOD HAZARD AREAS		Without Base Flood Elevation (BFE) Zone A, V, A99
		With BFE or Depth Zone AE, AO, AH, VE, AR
		Regulatory Floodway
OTHER AREAS OF FLOOD HAZARD		0.2% Annual Chance Flood Hazard, Areas of 1% annual chance flood with average depth less than one foot or with drainage areas of less than one square mile Zone X
		Future Conditions 1% Annual Chance Flood Hazard Zone X
		Area with Reduced Flood Risk due to Levee. See Notes. Zone X
		Area with Flood Risk due to Levee Zone D
OTHER AREAS		NO SCREEN Area of Minimal Flood Hazard Zone X
		Effective LOMRs
GENERAL STRUCTURES		Area of Undetermined Flood Hazard Zone D
		Channel, Culvert, or Storm Sewer
		Levee, Dike, or Floodwall
OTHER FEATURES		20.2 Cross Sections with 1% Annual Chance Water Surface Elevation
		17.5
		Coastal Transect
		Base Flood Elevation Line (BFE)
		Limit of Study
		Jurisdiction Boundary
		Coastal Transect Baseline
		Profile Baseline
MAP PANELS		Digital Data Available
		No Digital Data Available
		Unmapped



The pin displayed on the map is an approximate point selected by the user and does not represent an authoritative property location.

This map complies with FEMA's standards for the use of digital flood maps if it is not void as described below. The basemap shown complies with FEMA's basemap accuracy standards

The flood hazard information is derived directly from the authoritative NFHL web services provided by FEMA. This map was exported on 9/18/2025 at 2:58 PM and does not reflect changes or amendments subsequent to this date and time. The NFHL and effective information may change or become superseded by new data over time.

This map image is void if the one or more of the following map elements do not appear: basemap imagery, flood zone labels, legend, scale bar, map creation date, community identifiers, FIRM panel number, and FIRM effective date. Map images for unmapped and unmodernized areas cannot be used for regulatory purposes.

# Active Mines in New Mexico



9/17/2025, 5:01:05 PM

Registered Mines

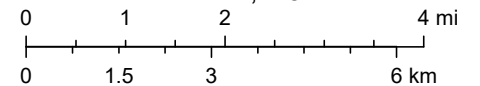


Aggregate, Stone etc.



Aggregate, Stone etc.

1:144,448

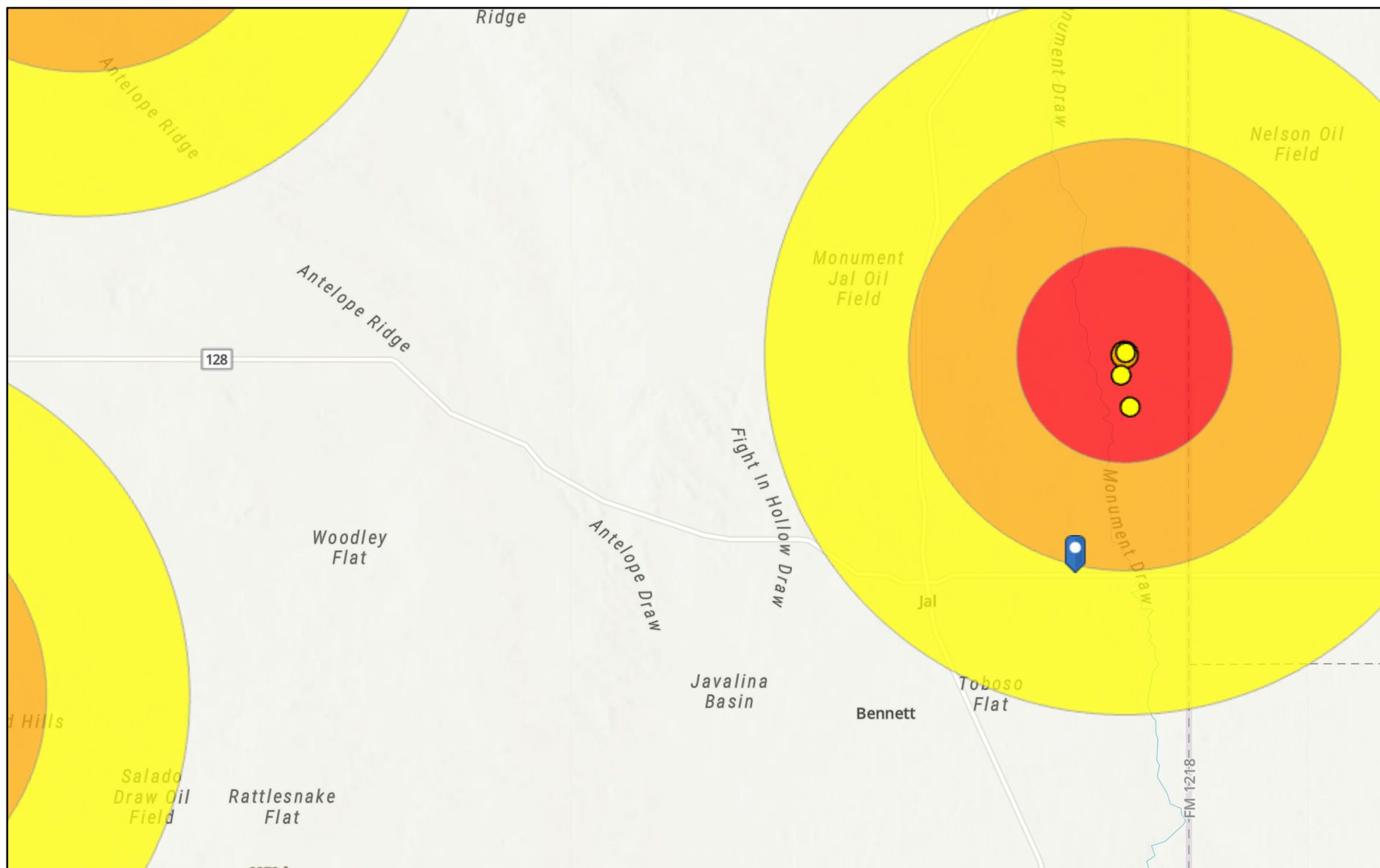


Esri, NASA, NGA, USGS, Sources: Esri, TomTom, Garmin, FAO, NOAA, USGS, © OpenStreetMap contributors, and the GIS User Community

EMNRD MMD GIS Coordinator

NM Energy, Minerals and Natural Resources Department (<http://nm-emnrd.maps.arcgis.com/apps/webappviewer/index.html?id=1b5e577974664d689b47790897ca2795>)

## OCD Seismicity



9/17/2025, 4:49:44 PM

Seismic Response 3.0 to 3.4

10 mi.

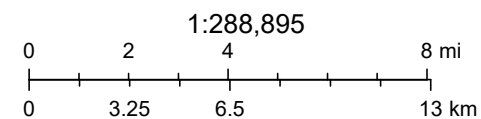
3.0 - 3.4

3 mi.

M2.5+ Earthquakes (2021+)

6 mi.

2.5 - 2.9

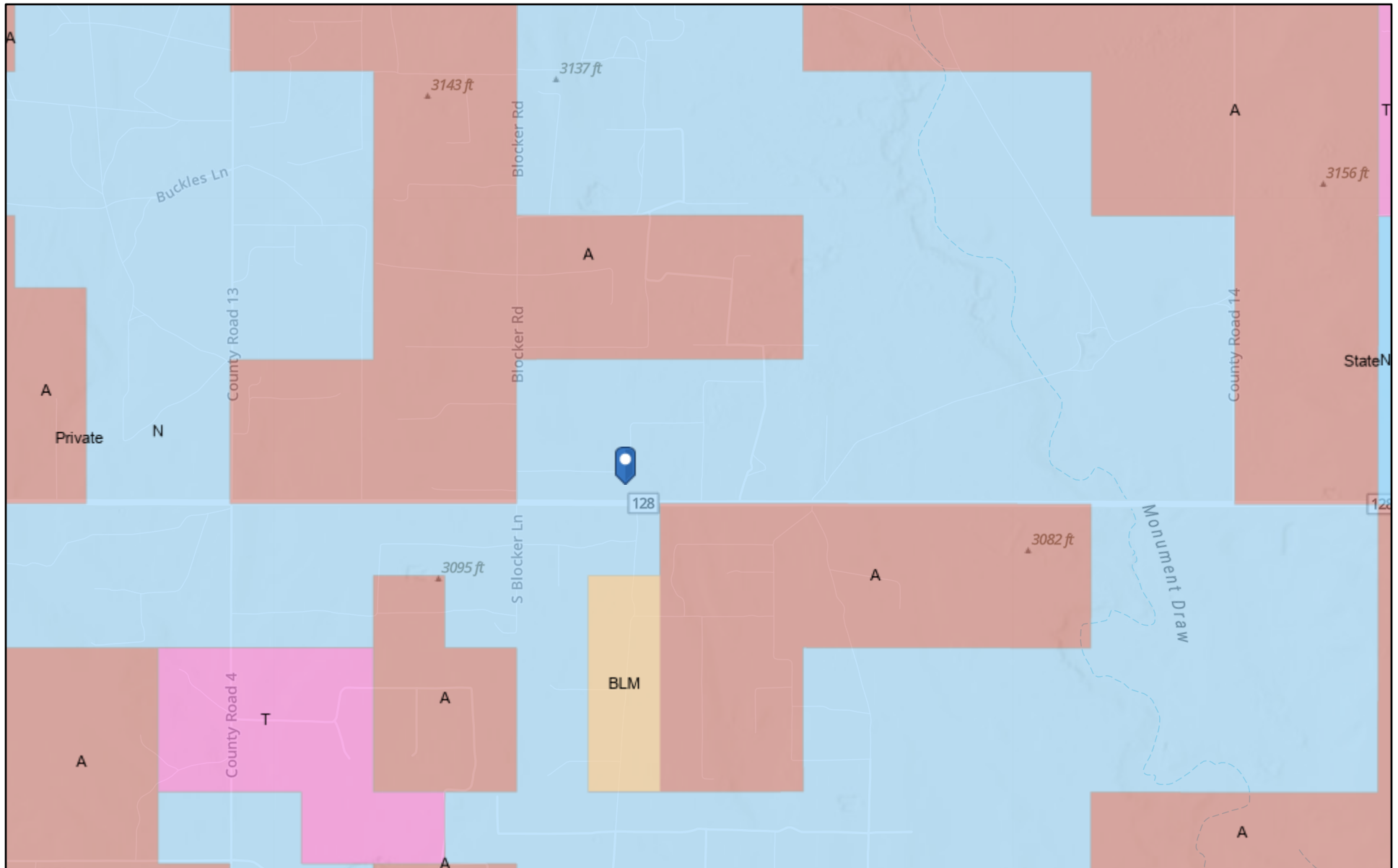


Oil Conservation Division (OCD), Energy, Minerals and Natural Resources Department (EMNRD), Esri, NASA, NGA, USGS, Sources: Esri, TomTom,

New Mexico Oil Conservation Division

NM OCD Oil and Gas Map. <http://nm-emnrd.maps.arcgis.com/apps/webappviewer/index.html?id=4d017f2306164de29fd2fb9f8f35ca75>: New Mexico Oil Conservation Division

# OCD Surface and Mineral Ownership



9/17/2025, 4:47:19 PM

## Mineral Ownership

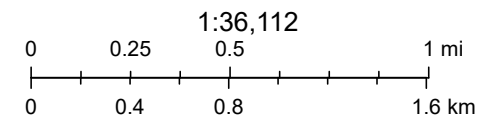
- A-All minerals are owned by U.S.
- N-No minerals are owned by the U.S.

T-Other minerals are owned by the U.S.

## Land Ownership

BLM

P  
S



U.S. BLM, Esri, NASA, NGA, USGS, FEMA, Sources: Esri, TomTom, Garmin, FAO, NOAA, USGS, © OpenStreetMap contributors, and the GIS User

New Mexico Oil Conservation Division

NM OCD Oil and Gas Map. <http://nm-ernrd.maps.arcgis.com/apps/webappviewer/index.html?id=4d017f2306164de29fd2fb9f8f35ca75>: New Mexico Oil Conservation Division



## **APPENDIX B**

# **Photographic Documentation**



TETRA TECH, INC. PROJECT NO. 212C-MD-03967	DESCRIPTION	Site signage.	1
	SITE NAME	JR Oil Learcy McBuffington #008	9/30/2025



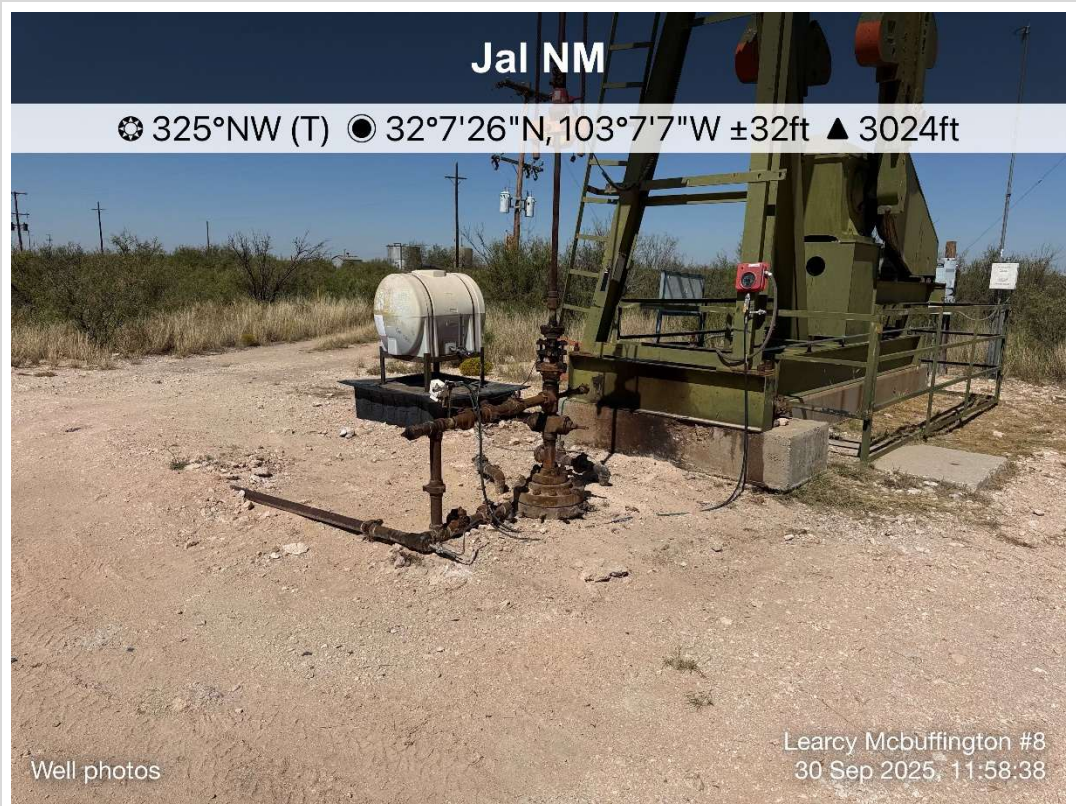


TETRA TECH, INC. PROJECT NO. 212C-MD-03967	DESCRIPTION	View north. East-side of pumping unit where remediation occurred in past.	2
	SITE NAME	JR Oil Learcy McBuffington #008	9/30/2025



TETRA TECH, INC. PROJECT NO. 212C-MD-03967	DESCRIPTION	View northeast. East-side of pumping unit with lease road access. Far-east side of inferred release extent.	3
	SITE NAME	JR Oil Learcy McBuffington #008	9/30/2025





TETRA TECH, INC. PROJECT NO. 212C-MD-03967	DESCRIPTION	View northwest. Pumping unit and wellhead.	4
	SITE NAME	JR Oil Learcy McBuffington #008	9/30/2025



TETRA TECH, INC. PROJECT NO. 212C-MD-03967	DESCRIPTION	View north. Pumping unit, wellhead, and small adjacent tank with underlying secondary containment.	5
	SITE NAME	JR Oil Learcy McBuffington #008	9/30/2025





TETRA TECH, INC. PROJECT NO. 212C-MD-03967	DESCRIPTION	View east. North-side of pumping unit with adjacent electrical box.	6
	SITE NAME	JR Oil Learcy McBuffington #008	9/30/2025

## **APPENDIX C**

### **Laboratory Analytical Data**



PHONE (575) 393-2326 ° 101 E. MARLAND ° HOBBS, NM 88240

August 14, 2025

SAM CHAMA

TETRA TECH

901 WEST WALL STREET , STE 100

MIDLAND, TX 79701

RE: LEARCY MCBUFFINGTON #8

Enclosed are the results of analyses for samples received by the laboratory on 08/08/25 11:30.

Cardinal Laboratories is accredited through Texas NELAP under certificate number TX-C25-00101. Accreditation applies to drinking water, non-potable water and solid and chemical materials. All accredited analytes are denoted by an asterisk (\*). For a complete list of accredited analytes and matrices visit the TCEQ website at [www.tceq.texas.gov/field/qa/lab\\_accred\\_certif.html](http://www.tceq.texas.gov/field/qa/lab_accred_certif.html).

Cardinal Laboratories is accredited through the State of Colorado Department of Public Health and Environment for:

Method EPA 552.2	Haloacetic Acids (HAA-5)
Method EPA 524.2	Total Trihalomethanes (TTHM)
Method EPA 524.4	Regulated VOCs (V1, V2, V3)

Accreditation applies to public drinking water matrices.

This report meets NELAP requirements and is made up of a cover page, analytical results, and a copy of the original chain-of-custody. If you have any questions concerning this report, please feel free to contact me.

Sincerely,

A handwritten signature in black ink that reads "Celey D. Keene". The signature is written in a cursive style with a large, stylized 'C' at the beginning.

Celey D. Keene

Lab Director/Quality Manager



PHONE (575) 393-2326 ° 101 E. MARLAND ° HOBBS, NM 88240

**Analytical Results For:**

TETRA TECH  
 SAM CHAMA  
 901 WEST WALL STREET , STE 100  
 MIDLAND TX, 79701  
 Fax To: (432) 682-3946

Received:	08/08/2025	Sampling Date:	08/07/2025
Reported:	08/14/2025	Sampling Type:	Soil
Project Name:	LEARCY MCBUFFINGTON #8	Sampling Condition:	Cool & Intact
Project Number:	NONE GIVEN	Sample Received By:	Alyssa Parras
Project Location:	JR OIL-LEA COUNTY, NM		

**Sample ID: LB AH 1 0-1' (H254890-01)**

BTX 8021B		mg/kg		Analyzed By: JH					
Analyte	Result	Reporting Limit	Analyzed	Method Blank	BS	% Recovery	True Value QC	RPD	Qualifier
Benzene*	<0.050	0.050	08/08/2025	ND	1.83	91.3	2.00	0.426	
Toluene*	<0.050	0.050	08/08/2025	ND	1.89	94.6	2.00	1.86	
Ethylbenzene*	<0.050	0.050	08/08/2025	ND	1.87	93.7	2.00	2.85	
Total Xylenes*	<0.150	0.150	08/08/2025	ND	5.53	92.1	6.00	2.81	
Total BTX	<0.300	0.300	08/08/2025	ND					

Surrogate: 4-Bromofluorobenzene (PID) 94.6 % 71.5-134

Chloride, SM4500Cl-B		mg/kg		Analyzed By: HM						
Analyte	Result	Reporting Limit	Analyzed	Method Blank	BS	% Recovery	True Value QC	RPD	Qualifier	
Chloride	<16.0	16.0	08/11/2025	ND	416	104	400	3.77		

TPH 8015M		mg/kg		Analyzed By: MS					
Analyte	Result	Reporting Limit	Analyzed	Method Blank	BS	% Recovery	True Value QC	RPD	Qualifier
GRO C6-C10*	<10.0	10.0	08/08/2025	ND	207	104	200	7.08	
DRO >C10-C28*	<10.0	10.0	08/08/2025	ND	202	101	200	7.63	
EXT DRO >C28-C36	<10.0	10.0	08/08/2025	ND					

Surrogate: 1-Chlorooctane 96.6 % 44.4-145

Surrogate: 1-Chlorooctadecane 94.1 % 40.6-153

Cardinal Laboratories

\*=Accredited Analyte

PLEASE NOTE: Liability and Damages. Cardinal's liability and client's exclusive remedy for any claim arising, whether based in contract or tort, shall be limited to the amount paid by client for analyses. All claims, including those for negligence and any other cause whatsoever shall be deemed waived unless made in writing and received by Cardinal within thirty (30) days after completion of the applicable service. In no event shall Cardinal be liable for incidental or consequential damages, including, without limitation, business interruptions, loss of use, or loss of profits incurred by client, its subsidiaries, affiliates or successors arising out of or related to the performance of the services hereunder by Cardinal, regardless of whether such claim is based upon any of the above stated reasons or otherwise. Results relate only to the samples identified above. This report shall not be reproduced except in full with written approval of Cardinal Laboratories.

Celey D. Keene, Lab Director/Quality Manager





PHONE (575) 393-2326 ° 101 E. MARLAND ° HOBBS, NM 88240

**Analytical Results For:**

TETRA TECH  
 SAM CHAMA  
 901 WEST WALL STREET , STE 100  
 MIDLAND TX, 79701  
 Fax To: (432) 682-3946

Received:	08/08/2025	Sampling Date:	08/07/2025
Reported:	08/14/2025	Sampling Type:	Soil
Project Name:	LEARCY MCBUFFINGTON #8	Sampling Condition:	Cool & Intact
Project Number:	NONE GIVEN	Sample Received By:	Alyssa Parras
Project Location:	JR OIL-LEA COUNTY, NM		

**Sample ID: LB AH 1 1-2' (H254890-02)**

BTEx 8021B		mg/kg		Analyzed By: JH						
Analyte	Result	Reporting Limit	Analyzed	Method Blank	BS	% Recovery	True Value QC	RPD	Qualifier	
Benzene*	<0.050	0.050	08/08/2025	ND	1.83	91.3	2.00	0.426		
Toluene*	<0.050	0.050	08/08/2025	ND	1.89	94.6	2.00	1.86		
Ethylbenzene*	<0.050	0.050	08/08/2025	ND	1.87	93.7	2.00	2.85		
Total Xylenes*	<0.150	0.150	08/08/2025	ND	5.53	92.1	6.00	2.81		
Total BTEx	<0.300	0.300	08/08/2025	ND						

Surrogate: 4-Bromofluorobenzene (PID) 94.0 % 71.5-134

Chloride, SM4500CI-B		mg/kg		Analyzed By: HM						
Analyte	Result	Reporting Limit	Analyzed	Method Blank	BS	% Recovery	True Value QC	RPD	Qualifier	
Chloride	<16.0	16.0	08/11/2025	ND	416	104	400	3.77		

TPH 8015M		mg/kg		Analyzed By: MS					
Analyte	Result	Reporting Limit	Analyzed	Method Blank	BS	% Recovery	True Value QC	RPD	Qualifier
GRO C6-C10*	<10.0	10.0	08/08/2025	ND	207	104	200	7.08	
DRO >C10-C28*	<10.0	10.0	08/08/2025	ND	202	101	200	7.63	
EXT DRO >C28-C36	<10.0	10.0	08/08/2025	ND					

Surrogate: 1-Chlorooctane 96.7 % 44.4-145

Surrogate: 1-Chlorooctadecane 93.6 % 40.6-153

Cardinal Laboratories

\*=Accredited Analyte

PLEASE NOTE: Liability and Damages. Cardinal's liability and client's exclusive remedy for any claim arising, whether based in contract or tort, shall be limited to the amount paid by client for analyses. All claims, including those for negligence and any other cause whatsoever shall be deemed waived unless made in writing and received by Cardinal within thirty (30) days after completion of the applicable service. In no event shall Cardinal be liable for incidental or consequential damages, including, without limitation, business interruptions, loss of use, or loss of profits incurred by client, its subsidiaries, affiliates or successors arising out of or related to the performance of the services hereunder by Cardinal, regardless of whether such claim is based upon any of the above stated reasons or otherwise. Results relate only to the samples identified above. This report shall not be reproduced except in full with written approval of Cardinal Laboratories.

Celey D. Keene, Lab Director/Quality Manager



PHONE (575) 393-2326 ° 101 E. MARLAND ° HOBBS, NM 88240

**Analytical Results For:**

TETRA TECH  
 SAM CHAMA  
 901 WEST WALL STREET , STE 100  
 MIDLAND TX, 79701  
 Fax To: (432) 682-3946

Received:	08/08/2025	Sampling Date:	08/07/2025
Reported:	08/14/2025	Sampling Type:	Soil
Project Name:	LEARCY MCBUFFINGTON #8	Sampling Condition:	Cool & Intact
Project Number:	NONE GIVEN	Sample Received By:	Alyssa Parras
Project Location:	JR OIL-LEA COUNTY, NM		

**Sample ID: LB AH 1 2-3' (H254890-03)**

BTEx 8021B		mg/kg		Analyzed By: JH						
Analyte	Result	Reporting Limit	Analyzed	Method Blank	BS	% Recovery	True Value QC	RPD	Qualifier	
Benzene*	<0.050	0.050	08/08/2025	ND	1.83	91.3	2.00	0.426		
Toluene*	<0.050	0.050	08/08/2025	ND	1.89	94.6	2.00	1.86		
Ethylbenzene*	<0.050	0.050	08/08/2025	ND	1.87	93.7	2.00	2.85		
Total Xylenes*	<0.150	0.150	08/08/2025	ND	5.53	92.1	6.00	2.81		
Total BTEx	<0.300	0.300	08/08/2025	ND						

Surrogate: 4-Bromofluorobenzene (PID) 93.2 % 71.5-134

Chloride, SM4500CI-B		mg/kg		Analyzed By: HM						
Analyte	Result	Reporting Limit	Analyzed	Method Blank	BS	% Recovery	True Value QC	RPD	Qualifier	
Chloride	<16.0	16.0	08/11/2025	ND	416	104	400	3.77		

TPH 8015M		mg/kg		Analyzed By: MS					
Analyte	Result	Reporting Limit	Analyzed	Method Blank	BS	% Recovery	True Value QC	RPD	Qualifier
GRO C6-C10*	<10.0	10.0	08/08/2025	ND	207	104	200	7.08	
DRO >C10-C28*	<10.0	10.0	08/08/2025	ND	202	101	200	7.63	
EXT DRO >C28-C36	<10.0	10.0	08/08/2025	ND					

Surrogate: 1-Chlorooctane 86.3 % 44.4-145

Surrogate: 1-Chlorooctadecane 82.1 % 40.6-153

Cardinal Laboratories

\*=Accredited Analyte

PLEASE NOTE: Liability and Damages. Cardinal's liability and client's exclusive remedy for any claim arising, whether based in contract or tort, shall be limited to the amount paid by client for analyses. All claims, including those for negligence and any other cause whatsoever shall be deemed waived unless made in writing and received by Cardinal within thirty (30) days after completion of the applicable service. In no event shall Cardinal be liable for incidental or consequential damages, including, without limitation, business interruptions, loss of use, or loss of profits incurred by client, its subsidiaries, affiliates or successors arising out of or related to the performance of the services hereunder by Cardinal, regardless of whether such claim is based upon any of the above stated reasons or otherwise. Results relate only to the samples identified above. This report shall not be reproduced except in full with written approval of Cardinal Laboratories.

Celey D. Keene, Lab Director/Quality Manager



PHONE (575) 393-2326 ° 101 E. MARLAND ° HOBBS, NM 88240

**Analytical Results For:**

TETRA TECH  
 SAM CHAMA  
 901 WEST WALL STREET , STE 100  
 MIDLAND TX, 79701  
 Fax To: (432) 682-3946

Received:	08/08/2025	Sampling Date:	08/07/2025
Reported:	08/14/2025	Sampling Type:	Soil
Project Name:	LEARCY MCBUFFINGTON #8	Sampling Condition:	Cool & Intact
Project Number:	NONE GIVEN	Sample Received By:	Alyssa Parras
Project Location:	JR OIL-LEA COUNTY, NM		

**Sample ID: LB AH 1 3-4' (H254890-04)**

BTEx 8021B		mg/kg		Analyzed By: JH						
Analyte	Result	Reporting Limit	Analyzed	Method Blank	BS	% Recovery	True Value QC	RPD	Qualifier	
Benzene*	<0.050	0.050	08/08/2025	ND	1.83	91.3	2.00	0.426		
Toluene*	<0.050	0.050	08/08/2025	ND	1.89	94.6	2.00	1.86		
Ethylbenzene*	<0.050	0.050	08/08/2025	ND	1.87	93.7	2.00	2.85		
Total Xylenes*	<0.150	0.150	08/08/2025	ND	5.53	92.1	6.00	2.81		
Total BTEX	<0.300	0.300	08/08/2025	ND						

Surrogate: 4-Bromofluorobenzene (PID) 94.1 % 71.5-134

Chloride, SM4500Cl-B		mg/kg		Analyzed By: HM						
Analyte	Result	Reporting Limit	Analyzed	Method Blank	BS	% Recovery	True Value QC	RPD	Qualifier	
Chloride	<16.0	16.0	08/11/2025	ND	416	104	400	3.77		

TPH 8015M		mg/kg		Analyzed By: MS					
Analyte	Result	Reporting Limit	Analyzed	Method Blank	BS	% Recovery	True Value QC	RPD	Qualifier
GRO C6-C10*	<10.0	10.0	08/08/2025	ND	207	104	200	7.08	
DRO >C10-C28*	<10.0	10.0	08/08/2025	ND	202	101	200	7.63	
EXT DRO >C28-C36	<10.0	10.0	08/08/2025	ND					

Surrogate: 1-Chlorooctane 85.7 % 44.4-145

Surrogate: 1-Chlorooctadecane 82.4 % 40.6-153

Cardinal Laboratories

\*=Accredited Analyte

PLEASE NOTE: Liability and Damages. Cardinal's liability and client's exclusive remedy for any claim arising, whether based in contract or tort, shall be limited to the amount paid by client for analyses. All claims, including those for negligence and any other cause whatsoever shall be deemed waived unless made in writing and received by Cardinal within thirty (30) days after completion of the applicable service. In no event shall Cardinal be liable for incidental or consequential damages, including, without limitation, business interruptions, loss of use, or loss of profits incurred by client, its subsidiaries, affiliates or successors arising out of or related to the performance of the services hereunder by Cardinal, regardless of whether such claim is based upon any of the above stated reasons or otherwise. Results relate only to the samples identified above. This report shall not be reproduced except in full with written approval of Cardinal Laboratories.

Celey D. Keene, Lab Director/Quality Manager



PHONE (575) 393-2326 ° 101 E. MARLAND ° HOBBS, NM 88240

**Analytical Results For:**

TETRA TECH  
 SAM CHAMA  
 901 WEST WALL STREET , STE 100  
 MIDLAND TX, 79701  
 Fax To: (432) 682-3946

Received:	08/08/2025	Sampling Date:	08/07/2025
Reported:	08/14/2025	Sampling Type:	Soil
Project Name:	LEARCY MCBUFFINGTON #8	Sampling Condition:	Cool & Intact
Project Number:	NONE GIVEN	Sample Received By:	Alyssa Parras
Project Location:	JR OIL-LEA COUNTY, NM		

**Sample ID: LB AH 2 0-1' (H254890-05)**

BTEx 8021B		mg/kg		Analyzed By: JH						
Analyte	Result	Reporting Limit	Analyzed	Method Blank	BS	% Recovery	True Value QC	RPD	Qualifier	
Benzene*	<0.050	0.050	08/08/2025	ND	1.83	91.3	2.00	0.426		
Toluene*	<0.050	0.050	08/08/2025	ND	1.89	94.6	2.00	1.86		
Ethylbenzene*	<0.050	0.050	08/08/2025	ND	1.87	93.7	2.00	2.85		
Total Xylenes*	<0.150	0.150	08/08/2025	ND	5.53	92.1	6.00	2.81		
Total BTEX	<0.300	0.300	08/08/2025	ND						

Surrogate: 4-Bromofluorobenzene (PID) 93.3 % 71.5-134

Chloride, SM4500Cl-B		mg/kg		Analyzed By: HM						
Analyte	Result	Reporting Limit	Analyzed	Method Blank	BS	% Recovery	True Value QC	RPD	Qualifier	
Chloride	<16.0	16.0	08/11/2025	ND	416	104	400	3.77		

TPH 8015M		mg/kg		Analyzed By: MS					
Analyte	Result	Reporting Limit	Analyzed	Method Blank	BS	% Recovery	True Value QC	RPD	Qualifier
GRO C6-C10*	<10.0	10.0	08/08/2025	ND	207	104	200	7.08	
DRO >C10-C28*	<10.0	10.0	08/08/2025	ND	202	101	200	7.63	
EXT DRO >C28-C36	<10.0	10.0	08/08/2025	ND					

Surrogate: 1-Chlorooctane 91.8 % 44.4-145

Surrogate: 1-Chlorooctadecane 88.1 % 40.6-153

Cardinal Laboratories

\*=Accredited Analyte

PLEASE NOTE: Liability and Damages. Cardinal's liability and client's exclusive remedy for any claim arising, whether based in contract or tort, shall be limited to the amount paid by client for analyses. All claims, including those for negligence and any other cause whatsoever shall be deemed waived unless made in writing and received by Cardinal within thirty (30) days after completion of the applicable service. In no event shall Cardinal be liable for incidental or consequential damages, including, without limitation, business interruptions, loss of use, or loss of profits incurred by client, its subsidiaries, affiliates or successors arising out of or related to the performance of the services hereunder by Cardinal, regardless of whether such claim is based upon any of the above stated reasons or otherwise. Results relate only to the samples identified above. This report shall not be reproduced except in full with written approval of Cardinal Laboratories.

Celey D. Keene, Lab Director/Quality Manager



PHONE (575) 393-2326 ° 101 E. MARLAND ° HOBBS, NM 88240

**Analytical Results For:**

TETRA TECH  
 SAM CHAMA  
 901 WEST WALL STREET , STE 100  
 MIDLAND TX, 79701  
 Fax To: (432) 682-3946

Received:	08/08/2025	Sampling Date:	08/07/2025
Reported:	08/14/2025	Sampling Type:	Soil
Project Name:	LEARCY MCBUFFINGTON #8	Sampling Condition:	Cool & Intact
Project Number:	NONE GIVEN	Sample Received By:	Alyssa Parras
Project Location:	JR OIL-LEA COUNTY, NM		

**Sample ID: LB AH 2 1-2' (H254890-06)**

BTEx 8021B		mg/kg		Analyzed By: JH						
Analyte	Result	Reporting Limit	Analyzed	Method Blank	BS	% Recovery	True Value QC	RPD	Qualifier	
Benzene*	<0.050	0.050	08/08/2025	ND	1.83	91.3	2.00	0.426		
Toluene*	<0.050	0.050	08/08/2025	ND	1.89	94.6	2.00	1.86		
Ethylbenzene*	<0.050	0.050	08/08/2025	ND	1.87	93.7	2.00	2.85		
Total Xylenes*	<0.150	0.150	08/08/2025	ND	5.53	92.1	6.00	2.81		
Total BTEX	<0.300	0.300	08/08/2025	ND						

Surrogate: 4-Bromofluorobenzene (PID) 92.8 % 71.5-134

Chloride, SM4500Cl-B		mg/kg		Analyzed By: HM						
Analyte	Result	Reporting Limit	Analyzed	Method Blank	BS	% Recovery	True Value QC	RPD	Qualifier	
Chloride	<16.0	16.0	08/11/2025	ND	416	104	400	3.77		

TPH 8015M		mg/kg		Analyzed By: MS					
Analyte	Result	Reporting Limit	Analyzed	Method Blank	BS	% Recovery	True Value QC	RPD	Qualifier
GRO C6-C10*	<10.0	10.0	08/08/2025	ND	207	104	200	7.08	
DRO >C10-C28*	<10.0	10.0	08/08/2025	ND	202	101	200	7.63	
EXT DRO >C28-C36	<10.0	10.0	08/08/2025	ND					

Surrogate: 1-Chlorooctane 91.7 % 44.4-145

Surrogate: 1-Chlorooctadecane 89.0 % 40.6-153

Cardinal Laboratories

\*=Accredited Analyte

PLEASE NOTE: Liability and Damages. Cardinal's liability and client's exclusive remedy for any claim arising, whether based in contract or tort, shall be limited to the amount paid by client for analyses. All claims, including those for negligence and any other cause whatsoever shall be deemed waived unless made in writing and received by Cardinal within thirty (30) days after completion of the applicable service. In no event shall Cardinal be liable for incidental or consequential damages, including, without limitation, business interruptions, loss of use, or loss of profits incurred by client, its subsidiaries, affiliates or successors arising out of or related to the performance of the services hereunder by Cardinal, regardless of whether such claim is based upon any of the above stated reasons or otherwise. Results relate only to the samples identified above. This report shall not be reproduced except in full with written approval of Cardinal Laboratories.

Celey D. Keene, Lab Director/Quality Manager



PHONE (575) 393-2326 ° 101 E. MARLAND ° HOBBS, NM 88240

**Analytical Results For:**

TETRA TECH  
 SAM CHAMA  
 901 WEST WALL STREET , STE 100  
 MIDLAND TX, 79701  
 Fax To: (432) 682-3946

Received:	08/08/2025	Sampling Date:	08/07/2025
Reported:	08/14/2025	Sampling Type:	Soil
Project Name:	LEARCY MCBUFFINGTON #8	Sampling Condition:	Cool & Intact
Project Number:	NONE GIVEN	Sample Received By:	Alyssa Parras
Project Location:	JR OIL-LEA COUNTY, NM		

**Sample ID: LB AH 2 2-3' (H254890-07)**

BTX 8021B		mg/kg		Analyzed By: JH						
Analyte	Result	Reporting Limit	Analyzed	Method Blank	BS	% Recovery	True Value QC	RPD	Qualifier	
Benzene*	<0.050	0.050	08/08/2025	ND	1.85	92.7	2.00	0.280		
Toluene*	<0.050	0.050	08/08/2025	ND	1.89	94.5	2.00	2.89		
Ethylbenzene*	<0.050	0.050	08/08/2025	ND	1.89	94.5	2.00	3.64		
Total Xylenes*	<0.150	0.150	08/08/2025	ND	5.89	98.2	6.00	3.65		
Total BTX	<0.300	0.300	08/08/2025	ND						

Surrogate: 4-Bromofluorobenzene (PID) 112 % 71.5-134

Chloride, SM4500CI-B		mg/kg		Analyzed By: HM						
Analyte	Result	Reporting Limit	Analyzed	Method Blank	BS	% Recovery	True Value QC	RPD	Qualifier	
Chloride	<16.0	16.0	08/11/2025	ND	416	104	400	3.77		

TPH 8015M		mg/kg		Analyzed By: MS					
Analyte	Result	Reporting Limit	Analyzed	Method Blank	BS	% Recovery	True Value QC	RPD	Qualifier
GRO C6-C10*	<10.0	10.0	08/08/2025	ND	207	104	200	7.08	
DRO >C10-C28*	<10.0	10.0	08/08/2025	ND	202	101	200	7.63	
EXT DRO >C28-C36	<10.0	10.0	08/08/2025	ND					

Surrogate: 1-Chlorooctane 93.4 % 44.4-145

Surrogate: 1-Chlorooctadecane 93.4 % 40.6-153

Cardinal Laboratories

\*=Accredited Analyte

PLEASE NOTE: Liability and Damages. Cardinal's liability and client's exclusive remedy for any claim arising, whether based in contract or tort, shall be limited to the amount paid by client for analyses. All claims, including those for negligence and any other cause whatsoever shall be deemed waived unless made in writing and received by Cardinal within thirty (30) days after completion of the applicable service. In no event shall Cardinal be liable for incidental or consequential damages, including, without limitation, business interruptions, loss of use, or loss of profits incurred by client, its subsidiaries, affiliates or successors arising out of or related to the performance of the services hereunder by Cardinal, regardless of whether such claim is based upon any of the above stated reasons or otherwise. Results relate only to the samples identified above. This report shall not be reproduced except in full with written approval of Cardinal Laboratories.

Celey D. Keene, Lab Director/Quality Manager



PHONE (575) 393-2326 ° 101 E. MARLAND ° HOBBS, NM 88240

**Analytical Results For:**

TETRA TECH  
 SAM CHAMA  
 901 WEST WALL STREET , STE 100  
 MIDLAND TX, 79701  
 Fax To: (432) 682-3946

Received:	08/08/2025	Sampling Date:	08/07/2025
Reported:	08/14/2025	Sampling Type:	Soil
Project Name:	LEARCY MCBUFFINGTON #8	Sampling Condition:	Cool & Intact
Project Number:	NONE GIVEN	Sample Received By:	Alyssa Parras
Project Location:	JR OIL-LEA COUNTY, NM		

**Sample ID: LB AH 2 3-4' (H254890-08)**

BTX 8021B		mg/kg		Analyzed By: JH						
Analyte	Result	Reporting Limit	Analyzed	Method Blank	BS	% Recovery	True Value QC	RPD	Qualifier	
Benzene*	<0.050	0.050	08/08/2025	ND	1.85	92.7	2.00	0.280		
Toluene*	<0.050	0.050	08/08/2025	ND	1.89	94.5	2.00	2.89		
Ethylbenzene*	<0.050	0.050	08/08/2025	ND	1.89	94.5	2.00	3.64		
Total Xylenes*	<0.150	0.150	08/08/2025	ND	5.89	98.2	6.00	3.65		
Total BTX	<0.300	0.300	08/08/2025	ND						

Surrogate: 4-Bromofluorobenzene (PID) 112 % 71.5-134

Chloride, SM4500CI-B		mg/kg		Analyzed By: HM						
Analyte	Result	Reporting Limit	Analyzed	Method Blank	BS	% Recovery	True Value QC	RPD	Qualifier	
Chloride	<16.0	16.0	08/11/2025	ND	416	104	400	3.77		

TPH 8015M		mg/kg		Analyzed By: MS					
Analyte	Result	Reporting Limit	Analyzed	Method Blank	BS	% Recovery	True Value QC	RPD	Qualifier
GRO C6-C10*	<10.0	10.0	08/08/2025	ND	207	104	200	7.08	
DRO >C10-C28*	<10.0	10.0	08/08/2025	ND	202	101	200	7.63	
EXT DRO >C28-C36	<10.0	10.0	08/08/2025	ND					

Surrogate: 1-Chlorooctane 89.9 % 44.4-145

Surrogate: 1-Chlorooctadecane 87.0 % 40.6-153

Cardinal Laboratories

\*=Accredited Analyte

PLEASE NOTE: Liability and Damages. Cardinal's liability and client's exclusive remedy for any claim arising, whether based in contract or tort, shall be limited to the amount paid by client for analyses. All claims, including those for negligence and any other cause whatsoever shall be deemed waived unless made in writing and received by Cardinal within thirty (30) days after completion of the applicable service. In no event shall Cardinal be liable for incidental or consequential damages, including, without limitation, business interruptions, loss of use, or loss of profits incurred by client, its subsidiaries, affiliates or successors arising out of or related to the performance of the services hereunder by Cardinal, regardless of whether such claim is based upon any of the above stated reasons or otherwise. Results relate only to the samples identified above. This report shall not be reproduced except in full with written approval of Cardinal Laboratories.

Celey D. Keene, Lab Director/Quality Manager



PHONE (575) 393-2326 ° 101 E. MARLAND ° HOBBS, NM 88240

**Analytical Results For:**

TETRA TECH  
 SAM CHAMA  
 901 WEST WALL STREET , STE 100  
 MIDLAND TX, 79701  
 Fax To: (432) 682-3946

Received:	08/08/2025	Sampling Date:	08/07/2025
Reported:	08/14/2025	Sampling Type:	Soil
Project Name:	LEARCY MCBUFFINGTON #8	Sampling Condition:	Cool & Intact
Project Number:	NONE GIVEN	Sample Received By:	Alyssa Parras
Project Location:	JR OIL-LEA COUNTY, NM		

**Sample ID: LB AH 3 0-1' (H254890-09)**

BTEx 8021B		mg/kg		Analyzed By: JH						
Analyte	Result	Reporting Limit	Analyzed	Method Blank	BS	% Recovery	True Value QC	RPD	Qualifier	
Benzene*	<0.050	0.050	08/08/2025	ND	1.85	92.7	2.00	0.280		
Toluene*	<0.050	0.050	08/08/2025	ND	1.89	94.5	2.00	2.89		
Ethylbenzene*	<0.050	0.050	08/08/2025	ND	1.89	94.5	2.00	3.64		
Total Xylenes*	<0.150	0.150	08/08/2025	ND	5.89	98.2	6.00	3.65		
Total BTEX	<0.300	0.300	08/08/2025	ND						

Surrogate: 4-Bromofluorobenzene (PID) 113 % 71.5-134

Chloride, SM4500Cl-B		mg/kg		Analyzed By: KH						
Analyte	Result	Reporting Limit	Analyzed	Method Blank	BS	% Recovery	True Value QC	RPD	Qualifier	
Chloride	<16.0	16.0	08/11/2025	ND	432	108	400	3.77		

TPH 8015M		mg/kg		Analyzed By: MS					
Analyte	Result	Reporting Limit	Analyzed	Method Blank	BS	% Recovery	True Value QC	RPD	Qualifier
GRO C6-C10*	<10.0	10.0	08/08/2025	ND	207	104	200	7.08	
DRO >C10-C28*	<10.0	10.0	08/08/2025	ND	202	101	200	7.63	
EXT DRO >C28-C36	<10.0	10.0	08/08/2025	ND					

Surrogate: 1-Chlorooctane 97.2 % 44.4-145

Surrogate: 1-Chlorooctadecane 94.1 % 40.6-153

Cardinal Laboratories

\*=Accredited Analyte

PLEASE NOTE: Liability and Damages. Cardinal's liability and client's exclusive remedy for any claim arising, whether based in contract or tort, shall be limited to the amount paid by client for analyses. All claims, including those for negligence and any other cause whatsoever shall be deemed waived unless made in writing and received by Cardinal within thirty (30) days after completion of the applicable service. In no event shall Cardinal be liable for incidental or consequential damages, including, without limitation, business interruptions, loss of use, or loss of profits incurred by client, its subsidiaries, affiliates or successors arising out of or related to the performance of the services hereunder by Cardinal, regardless of whether such claim is based upon any of the above stated reasons or otherwise. Results relate only to the samples identified above. This report shall not be reproduced except in full with written approval of Cardinal Laboratories.

Celey D. Keene, Lab Director/Quality Manager





PHONE (575) 393-2326 ° 101 E. MARLAND ° HOBBS, NM 88240

**Analytical Results For:**

TETRA TECH  
 SAM CHAMA  
 901 WEST WALL STREET , STE 100  
 MIDLAND TX, 79701  
 Fax To: (432) 682-3946

Received:	08/08/2025	Sampling Date:	08/07/2025
Reported:	08/14/2025	Sampling Type:	Soil
Project Name:	LEARCY MCBUFFINGTON #8	Sampling Condition:	Cool & Intact
Project Number:	NONE GIVEN	Sample Received By:	Alyssa Parras
Project Location:	JR OIL-LEA COUNTY, NM		

**Sample ID: LB AH 3 1-2' (H254890-10)**

BTX 8021B		mg/kg		Analyzed By: JH						
Analyte	Result	Reporting Limit	Analyzed	Method Blank	BS	% Recovery	True Value QC	RPD	Qualifier	
Benzene*	<0.050	0.050	08/08/2025	ND	1.85	92.7	2.00	0.280		
Toluene*	<0.050	0.050	08/08/2025	ND	1.89	94.5	2.00	2.89		
Ethylbenzene*	<0.050	0.050	08/08/2025	ND	1.89	94.5	2.00	3.64		
Total Xylenes*	<0.150	0.150	08/08/2025	ND	5.89	98.2	6.00	3.65		
Total BTX	<0.300	0.300	08/08/2025	ND						

Surrogate: 4-Bromofluorobenzene (PID) 117 % 71.5-134

Chloride, SM4500CI-B		mg/kg		Analyzed By: KH						
Analyte	Result	Reporting Limit	Analyzed	Method Blank	BS	% Recovery	True Value QC	RPD	Qualifier	
Chloride	32.0	16.0	08/11/2025	ND	432	108	400	3.77		

TPH 8015M		mg/kg		Analyzed By: MS					
Analyte	Result	Reporting Limit	Analyzed	Method Blank	BS	% Recovery	True Value QC	RPD	Qualifier
GRO C6-C10*	<10.0	10.0	08/08/2025	ND	207	104	200	7.08	
DRO >C10-C28*	<10.0	10.0	08/08/2025	ND	202	101	200	7.63	
EXT DRO >C28-C36	<10.0	10.0	08/08/2025	ND					

Surrogate: 1-Chlorooctane 102 % 44.4-145

Surrogate: 1-Chlorooctadecane 99.0 % 40.6-153

Cardinal Laboratories

\*=Accredited Analyte

PLEASE NOTE: Liability and Damages. Cardinal's liability and client's exclusive remedy for any claim arising, whether based in contract or tort, shall be limited to the amount paid by client for analyses. All claims, including those for negligence and any other cause whatsoever shall be deemed waived unless made in writing and received by Cardinal within thirty (30) days after completion of the applicable service. In no event shall Cardinal be liable for incidental or consequential damages, including, without limitation, business interruptions, loss of use, or loss of profits incurred by client, its subsidiaries, affiliates or successors arising out of or related to the performance of the services hereunder by Cardinal, regardless of whether such claim is based upon any of the above stated reasons or otherwise. Results relate only to the samples identified above. This report shall not be reproduced except in full with written approval of Cardinal Laboratories.

Celey D. Keene, Lab Director/Quality Manager



PHONE (575) 393-2326 ° 101 E. MARLAND ° HOBBS, NM 88240

**Analytical Results For:**

TETRA TECH  
 SAM CHAMA  
 901 WEST WALL STREET , STE 100  
 MIDLAND TX, 79701  
 Fax To: (432) 682-3946

Received: 08/08/2025  
 Reported: 08/14/2025  
 Project Name: LEARCY MCBUFFINGTON #8  
 Project Number: NONE GIVEN  
 Project Location: JR OIL-LEA COUNTY, NM

Sampling Date: 08/07/2025  
 Sampling Type: Soil  
 Sampling Condition: Cool & Intact  
 Sample Received By: Alyssa Parras

**Sample ID: LB AH 3 2-3' (H254890-11)**

BTEx 8021B		mg/kg		Analyzed By: JH					
Analyte	Result	Reporting Limit	Analyzed	Method Blank	BS	% Recovery	True Value QC	RPD	Qualifier
Benzene*	<0.050	0.050	08/08/2025	ND	1.85	92.7	2.00	0.280	
Toluene*	<0.050	0.050	08/08/2025	ND	1.89	94.5	2.00	2.89	
Ethylbenzene*	<0.050	0.050	08/08/2025	ND	1.89	94.5	2.00	3.64	
Total Xylenes*	<0.150	0.150	08/08/2025	ND	5.89	98.2	6.00	3.65	
Total BTEX	<0.300	0.300	08/08/2025	ND					

Surrogate: 4-Bromofluorobenzene (PID) 114 % 71.5-134

Chloride, SM4500Cl-B		mg/kg		Analyzed By: KH					
Analyte	Result	Reporting Limit	Analyzed	Method Blank	BS	% Recovery	True Value QC	RPD	Qualifier
Chloride	32.0	16.0	08/11/2025	ND	432	108	400	3.77	

TPH 8015M		mg/kg		Analyzed By: MS					
Analyte	Result	Reporting Limit	Analyzed	Method Blank	BS	% Recovery	True Value QC	RPD	Qualifier
GRO C6-C10*	<10.0	10.0	08/08/2025	ND	207	104	200	7.08	
DRO >C10-C28*	<10.0	10.0	08/08/2025	ND	202	101	200	7.63	
EXT DRO >C28-C36	<10.0	10.0	08/08/2025	ND					

Surrogate: 1-Chlorooctane 93.9 % 44.4-145

Surrogate: 1-Chlorooctadecane 91.6 % 40.6-153

Cardinal Laboratories

\*=Accredited Analyte

PLEASE NOTE: Liability and Damages. Cardinal's liability and client's exclusive remedy for any claim arising, whether based in contract or tort, shall be limited to the amount paid by client for analyses. All claims, including those for negligence and any other cause whatsoever shall be deemed waived unless made in writing and received by Cardinal within thirty (30) days after completion of the applicable service. In no event shall Cardinal be liable for incidental or consequential damages, including, without limitation, business interruptions, loss of use, or loss of profits incurred by client, its subsidiaries, affiliates or successors arising out of or related to the performance of the services hereunder by Cardinal, regardless of whether such claim is based upon any of the above stated reasons or otherwise. Results relate only to the samples identified above. This report shall not be reproduced except in full with written approval of Cardinal Laboratories.

Celey D. Keene, Lab Director/Quality Manager



PHONE (575) 393-2326 ° 101 E. MARLAND ° HOBBS, NM 88240

**Analytical Results For:**

TETRA TECH  
 SAM CHAMA  
 901 WEST WALL STREET , STE 100  
 MIDLAND TX, 79701  
 Fax To: (432) 682-3946

Received:	08/08/2025	Sampling Date:	08/07/2025
Reported:	08/14/2025	Sampling Type:	Soil
Project Name:	LEARCY MCBUFFINGTON #8	Sampling Condition:	Cool & Intact
Project Number:	NONE GIVEN	Sample Received By:	Alyssa Parras
Project Location:	JR OIL-LEA COUNTY, NM		

**Sample ID: LB AH 3 3-4' (H254890-12)**

BTX 8021B		mg/kg		Analyzed By: JH						
Analyte	Result	Reporting Limit	Analyzed	Method Blank	BS	% Recovery	True Value QC	RPD	Qualifier	
Benzene*	<0.050	0.050	08/08/2025	ND	1.85	92.7	2.00	0.280		
Toluene*	<0.050	0.050	08/08/2025	ND	1.89	94.5	2.00	2.89		
Ethylbenzene*	<0.050	0.050	08/08/2025	ND	1.89	94.5	2.00	3.64		
Total Xylenes*	<0.150	0.150	08/08/2025	ND	5.89	98.2	6.00	3.65		
Total BTX	<0.300	0.300	08/08/2025	ND						

Surrogate: 4-Bromofluorobenzene (PID) 114 % 71.5-134

Chloride, SM4500CI-B		mg/kg		Analyzed By: KH						
Analyte	Result	Reporting Limit	Analyzed	Method Blank	BS	% Recovery	True Value QC	RPD	Qualifier	
Chloride	32.0	16.0	08/11/2025	ND	432	108	400	3.77		

TPH 8015M		mg/kg		Analyzed By: MS					
Analyte	Result	Reporting Limit	Analyzed	Method Blank	BS	% Recovery	True Value QC	RPD	Qualifier
GRO C6-C10*	<10.0	10.0	08/08/2025	ND	207	104	200	7.08	
DRO >C10-C28*	<10.0	10.0	08/08/2025	ND	202	101	200	7.63	
EXT DRO >C28-C36	<10.0	10.0	08/08/2025	ND					

Surrogate: 1-Chlorooctane 92.0 % 44.4-145

Surrogate: 1-Chlorooctadecane 89.1 % 40.6-153

Cardinal Laboratories

\*=Accredited Analyte

PLEASE NOTE: Liability and Damages. Cardinal's liability and client's exclusive remedy for any claim arising, whether based in contract or tort, shall be limited to the amount paid by client for analyses. All claims, including those for negligence and any other cause whatsoever shall be deemed waived unless made in writing and received by Cardinal within thirty (30) days after completion of the applicable service. In no event shall Cardinal be liable for incidental or consequential damages, including, without limitation, business interruptions, loss of use, or loss of profits incurred by client, its subsidiaries, affiliates or successors arising out of or related to the performance of the services hereunder by Cardinal, regardless of whether such claim is based upon any of the above stated reasons or otherwise. Results relate only to the samples identified above. This report shall not be reproduced except in full with written approval of Cardinal Laboratories.

Celey D. Keene, Lab Director/Quality Manager



PHONE (575) 393-2326 ° 101 E. MARLAND ° HOBBS, NM 88240

**Analytical Results For:**

TETRA TECH  
 SAM CHAMA  
 901 WEST WALL STREET , STE 100  
 MIDLAND TX, 79701  
 Fax To: (432) 682-3946

Received:	08/08/2025	Sampling Date:	08/07/2025
Reported:	08/14/2025	Sampling Type:	Soil
Project Name:	LEARCY MCBUFFINGTON #8	Sampling Condition:	Cool & Intact
Project Number:	NONE GIVEN	Sample Received By:	Alyssa Parras
Project Location:	JR OIL-LEA COUNTY, NM		

**Sample ID: LB AH 4 0-1' (H254890-13)**

BTX 8021B		mg/kg		Analyzed By: JH						
Analyte	Result	Reporting Limit	Analyzed	Method Blank	BS	% Recovery	True Value QC	RPD	Qualifier	
Benzene*	<0.050	0.050	08/08/2025	ND	1.85	92.7	2.00	0.280		
Toluene*	<0.050	0.050	08/08/2025	ND	1.89	94.5	2.00	2.89		
Ethylbenzene*	<0.050	0.050	08/08/2025	ND	1.89	94.5	2.00	3.64		
Total Xylenes*	<0.150	0.150	08/08/2025	ND	5.89	98.2	6.00	3.65		
Total BTX	<0.300	0.300	08/08/2025	ND						

Surrogate: 4-Bromofluorobenzene (PID) 113 % 71.5-134

Chloride, SM4500CI-B		mg/kg		Analyzed By: KH						
Analyte	Result	Reporting Limit	Analyzed	Method Blank	BS	% Recovery	True Value QC	RPD	Qualifier	
Chloride	<16.0	16.0	08/11/2025	ND	432	108	400	3.77		

TPH 8015M		mg/kg		Analyzed By: MS					
Analyte	Result	Reporting Limit	Analyzed	Method Blank	BS	% Recovery	True Value QC	RPD	Qualifier
GRO C6-C10*	<10.0	10.0	08/08/2025	ND	233	116	200	0.152	
DRO >C10-C28*	<10.0	10.0	08/08/2025	ND	229	115	200	3.14	
EXT DRO >C28-C36	<10.0	10.0	08/08/2025	ND					

Surrogate: 1-Chlorooctane 95.3 % 44.4-145

Surrogate: 1-Chlorooctadecane 94.0 % 40.6-153

Cardinal Laboratories

\*=Accredited Analyte

PLEASE NOTE: Liability and Damages. Cardinal's liability and client's exclusive remedy for any claim arising, whether based in contract or tort, shall be limited to the amount paid by client for analyses. All claims, including those for negligence and any other cause whatsoever shall be deemed waived unless made in writing and received by Cardinal within thirty (30) days after completion of the applicable service. In no event shall Cardinal be liable for incidental or consequential damages, including, without limitation, business interruptions, loss of use, or loss of profits incurred by client, its subsidiaries, affiliates or successors arising out of or related to the performance of the services hereunder by Cardinal, regardless of whether such claim is based upon any of the above stated reasons or otherwise. Results relate only to the samples identified above. This report shall not be reproduced except in full with written approval of Cardinal Laboratories.

Celey D. Keene, Lab Director/Quality Manager



PHONE (575) 393-2326 ° 101 E. MARLAND ° HOBBS, NM 88240

**Analytical Results For:**

TETRA TECH  
 SAM CHAMA  
 901 WEST WALL STREET , STE 100  
 MIDLAND TX, 79701  
 Fax To: (432) 682-3946

Received:	08/08/2025	Sampling Date:	08/07/2025
Reported:	08/14/2025	Sampling Type:	Soil
Project Name:	LEARCY MCBUFFINGTON #8	Sampling Condition:	Cool & Intact
Project Number:	NONE GIVEN	Sample Received By:	Alyssa Parras
Project Location:	JR OIL-LEA COUNTY, NM		

**Sample ID: LB AH 4 1-2' (H254890-14)**

BTEx 8021B		mg/kg		Analyzed By: JH						
Analyte	Result	Reporting Limit	Analyzed	Method Blank	BS	% Recovery	True Value QC	RPD	Qualifier	
Benzene*	<0.050	0.050	08/08/2025	ND	1.85	92.7	2.00	0.280		
Toluene*	<0.050	0.050	08/08/2025	ND	1.89	94.5	2.00	2.89		
Ethylbenzene*	<0.050	0.050	08/08/2025	ND	1.89	94.5	2.00	3.64		
Total Xylenes*	<0.150	0.150	08/08/2025	ND	5.89	98.2	6.00	3.65		
Total BTEX	<0.300	0.300	08/08/2025	ND						

Surrogate: 4-Bromofluorobenzene (PID) 113 % 71.5-134

Chloride, SM4500Cl-B		mg/kg		Analyzed By: KH						
Analyte	Result	Reporting Limit	Analyzed	Method Blank	BS	% Recovery	True Value QC	RPD	Qualifier	
Chloride	80.0	16.0	08/11/2025	ND	432	108	400	3.77		

TPH 8015M		mg/kg		Analyzed By: MS					
Analyte	Result	Reporting Limit	Analyzed	Method Blank	BS	% Recovery	True Value QC	RPD	Qualifier
GRO C6-C10*	<10.0	10.0	08/08/2025	ND	233	116	200	0.152	
DRO >C10-C28*	<10.0	10.0	08/08/2025	ND	229	115	200	3.14	
EXT DRO >C28-C36	<10.0	10.0	08/08/2025	ND					

Surrogate: 1-Chlorooctane 102 % 44.4-145

Surrogate: 1-Chlorooctadecane 102 % 40.6-153

Cardinal Laboratories

\*=Accredited Analyte

PLEASE NOTE: Liability and Damages. Cardinal's liability and client's exclusive remedy for any claim arising, whether based in contract or tort, shall be limited to the amount paid by client for analyses. All claims, including those for negligence and any other cause whatsoever shall be deemed waived unless made in writing and received by Cardinal within thirty (30) days after completion of the applicable service. In no event shall Cardinal be liable for incidental or consequential damages, including, without limitation, business interruptions, loss of use, or loss of profits incurred by client, its subsidiaries, affiliates or successors arising out of or related to the performance of the services hereunder by Cardinal, regardless of whether such claim is based upon any of the above stated reasons or otherwise. Results relate only to the samples identified above. This report shall not be reproduced except in full with written approval of Cardinal Laboratories.

Celey D. Keene, Lab Director/Quality Manager





PHONE (575) 393-2326 ° 101 E. MARLAND ° HOBBS, NM 88240

**Analytical Results For:**

TETRA TECH  
 SAM CHAMA  
 901 WEST WALL STREET , STE 100  
 MIDLAND TX, 79701  
 Fax To: (432) 682-3946

Received:	08/08/2025	Sampling Date:	08/07/2025
Reported:	08/14/2025	Sampling Type:	Soil
Project Name:	LEARCY MCBUFFINGTON #8	Sampling Condition:	Cool & Intact
Project Number:	NONE GIVEN	Sample Received By:	Alyssa Parras
Project Location:	JR OIL-LEA COUNTY, NM		

**Sample ID: LB AH 4 2-3' (H254890-15)**

BTX 8021B		mg/kg		Analyzed By: JH						
Analyte	Result	Reporting Limit	Analyzed	Method Blank	BS	% Recovery	True Value QC	RPD	Qualifier	
Benzene*	<0.050	0.050	08/08/2025	ND	1.85	92.7	2.00	0.280		
Toluene*	<0.050	0.050	08/08/2025	ND	1.89	94.5	2.00	2.89		
Ethylbenzene*	<0.050	0.050	08/08/2025	ND	1.89	94.5	2.00	3.64		
Total Xylenes*	<0.150	0.150	08/08/2025	ND	5.89	98.2	6.00	3.65		
Total BTX	<0.300	0.300	08/08/2025	ND						

Surrogate: 4-Bromofluorobenzene (PID) 113 % 71.5-134

Chloride, SM4500CI-B		mg/kg		Analyzed By: KH						
Analyte	Result	Reporting Limit	Analyzed	Method Blank	BS	% Recovery	True Value QC	RPD	Qualifier	
Chloride	160	16.0	08/11/2025	ND	432	108	400	3.77		

TPH 8015M		mg/kg		Analyzed By: MS					
Analyte	Result	Reporting Limit	Analyzed	Method Blank	BS	% Recovery	True Value QC	RPD	Qualifier
GRO C6-C10*	<10.0	10.0	08/08/2025	ND	233	116	200	0.152	
DRO >C10-C28*	<10.0	10.0	08/08/2025	ND	229	115	200	3.14	
EXT DRO >C28-C36	<10.0	10.0	08/08/2025	ND					

Surrogate: 1-Chlorooctane 100 % 44.4-145

Surrogate: 1-Chlorooctadecane 99.1 % 40.6-153

Cardinal Laboratories

\*=Accredited Analyte

PLEASE NOTE: Liability and Damages. Cardinal's liability and client's exclusive remedy for any claim arising, whether based in contract or tort, shall be limited to the amount paid by client for analyses. All claims, including those for negligence and any other cause whatsoever shall be deemed waived unless made in writing and received by Cardinal within thirty (30) days after completion of the applicable service. In no event shall Cardinal be liable for incidental or consequential damages, including, without limitation, business interruptions, loss of use, or loss of profits incurred by client, its subsidiaries, affiliates or successors arising out of or related to the performance of the services hereunder by Cardinal, regardless of whether such claim is based upon any of the above stated reasons or otherwise. Results relate only to the samples identified above. This report shall not be reproduced except in full with written approval of Cardinal Laboratories.

Celey D. Keene, Lab Director/Quality Manager



PHONE (575) 393-2326 ° 101 E. MARLAND ° HOBBS, NM 88240

**Analytical Results For:**

TETRA TECH  
 SAM CHAMA  
 901 WEST WALL STREET , STE 100  
 MIDLAND TX, 79701  
 Fax To: (432) 682-3946

Received:	08/08/2025	Sampling Date:	08/07/2025
Reported:	08/14/2025	Sampling Type:	Soil
Project Name:	LEARCY MCBUFFINGTON #8	Sampling Condition:	Cool & Intact
Project Number:	NONE GIVEN	Sample Received By:	Alyssa Parras
Project Location:	JR OIL-LEA COUNTY, NM		

**Sample ID: LB AB 4 3-4' (H254890-16)**

BTX 8021B		mg/kg		Analyzed By: JH						
Analyte	Result	Reporting Limit	Analyzed	Method Blank	BS	% Recovery	True Value QC	RPD	Qualifier	
Benzene*	<0.050	0.050	08/08/2025	ND	1.85	92.7	2.00	0.280		
Toluene*	<0.050	0.050	08/08/2025	ND	1.89	94.5	2.00	2.89		
Ethylbenzene*	<0.050	0.050	08/08/2025	ND	1.89	94.5	2.00	3.64		
Total Xylenes*	<0.150	0.150	08/08/2025	ND	5.89	98.2	6.00	3.65		
Total BTX	<0.300	0.300	08/08/2025	ND						

Surrogate: 4-Bromofluorobenzene (PID) 107 % 71.5-134

Chloride, SM4500CI-B		mg/kg		Analyzed By: KH						
Analyte	Result	Reporting Limit	Analyzed	Method Blank	BS	% Recovery	True Value QC	RPD	Qualifier	
Chloride	<16.0	16.0	08/11/2025	ND	432	108	400	3.77		

TPH 8015M		mg/kg		Analyzed By: MS					
Analyte	Result	Reporting Limit	Analyzed	Method Blank	BS	% Recovery	True Value QC	RPD	Qualifier
GRO C6-C10*	<10.0	10.0	08/08/2025	ND	233	116	200	0.152	
DRO >C10-C28*	<10.0	10.0	08/08/2025	ND	229	115	200	3.14	
EXT DRO >C28-C36	<10.0	10.0	08/08/2025	ND					

Surrogate: 1-Chlorooctane 102 % 44.4-145

Surrogate: 1-Chlorooctadecane 101 % 40.6-153

Cardinal Laboratories

\*=Accredited Analyte

PLEASE NOTE: Liability and Damages. Cardinal's liability and client's exclusive remedy for any claim arising, whether based in contract or tort, shall be limited to the amount paid by client for analyses. All claims, including those for negligence and any other cause whatsoever shall be deemed waived unless made in writing and received by Cardinal within thirty (30) days after completion of the applicable service. In no event shall Cardinal be liable for incidental or consequential damages, including, without limitation, business interruptions, loss of use, or loss of profits incurred by client, its subsidiaries, affiliates or successors arising out of or related to the performance of the services hereunder by Cardinal, regardless of whether such claim is based upon any of the above stated reasons or otherwise. Results relate only to the samples identified above. This report shall not be reproduced except in full with written approval of Cardinal Laboratories.

Celey D. Keene, Lab Director/Quality Manager



PHONE (575) 393-2326 ° 101 E. MARLAND ° HOBBS, NM 88240

Notes and Definitions

- QM-07      The spike recovery was outside acceptance limits for the MS and/or MSD. The batch was accepted based on acceptable LCS recovery.
- ND      Analyte NOT DETECTED at or above the reporting limit
- RPD      Relative Percent Difference
- \*\*      Samples not received at proper temperature of 6°C or below.
- \*\*\*      Insufficient time to reach temperature.
- Chloride by SM4500Cl-B does not require samples be received at or below 6°C  
Samples reported on an as received basis (wet) unless otherwise noted on report

Cardinal Laboratories

\*=Accredited Analyte

PLEASE NOTE: Liability and Damages. Cardinal's liability and client's exclusive remedy for any claim arising, whether based in contract or tort, shall be limited to the amount paid by client for analyses. All claims, including those for negligence and any other cause whatsoever shall be deemed waived unless made in writing and received by Cardinal within thirty (30) days after completion of the applicable service. In no event shall Cardinal be liable for incidental or consequential damages, including, without limitation, business interruptions, loss of use, or loss of profits incurred by client, its subsidiaries, affiliates or successors arising out of or related to the performance of the services hereunder by Cardinal, regardless of whether such claim is based upon any of the above stated reasons or otherwise. Results relate only to the samples identified above. This report shall not be reproduced except in full with written approval of Cardinal Laboratories.

A handwritten signature in black ink, appearing to read "Caley D. Keene".

Caley D. Keene, Lab Director/Quality Manager

# CHAIN-OF-CUSTODY AND ANALYSIS REQUEST

Page 19 of 20





101 East Marland, Hobbs, NM 88240  
(575) 393-2326 FAX (575) 393-2476

CHAIN-OF-CUSTODY AND ANALYSIS REQUEST

Company Name: J H Gil		P.O. #:		BILL TO													
Project Manager: Sam Chama				Company: Tetra Tech		ANALYSIS REQUEST											
Address:				Attn: Sam Chama													
City:		State:		Zip:													
Phone #:		Fax #:		Address:													
Project #:		Project Owner:		City:													
Project Location: Leary Mtn, Leary Co, NM		State:		Zip:													
Sampler Name: Josh Latimer		Phone #:		Fax #:													
FOR LAB USE ONLY																	
Lab I.D.		Sample I.D.															
H254890																	
11 LB AH 3 2-3'																	
12 LB AH 3 3-4'																	
13 LB AH 4 0-1'																	
14 LB AH 4 1-2'																	
15 LB AH 4 2-3'																	
16 LB AB 4 3-4'																	
PLEASE NOTE: Liability and Damages: Cardinal's liability and client's exclusive remedy for any claim arising whether based in contract or tort, shall be limited to the amount paid by the client for the analysis. All claims including those for negligence and any other cause whatsoever shall be deemed waived unless made in writing and received by Cardinal within 30 days after completion of the applicable service. In no event shall Cardinal be liable for incidental or consequential damages, including without limitation, business interruptions, loss of use, or loss of profits incurred by client, its subsidiaries, affiliates or successors arising out of or related to the performance of services hereunder by Cardinal, regardless of whether such claim is based upon any of the above stated reasons or otherwise.																	
Relinquished By:		Date: 8-8-25		Received By:													
Relinquished By:		Time: 11:30		Received By:													
Delivered By: (Circle One)		Observed Temp. °C: 8.0		Sample Condition:													
Sampler - UPS - Bus - Other:		Corrected Temp. °C: 8.3		Cool Intact: Yes													
FORM 008-R-03-02-12-23				CHECKED BY: (Initials)													
				Turnaround Time:													
				Thermometer ID #140													
				Correction Factor: +0.3°C													
				Standard Rush:													
				Bacteria (only) Sample Condition:													
				Cool Intact: Yes													
				Observed Temp. °C:													
				Corrected Temp. °C:													
				REMARKS: Sam Chama Tetra Tech can jlatimer@jrcal.com													
				Verbal Result: Yes No Add'l Phone #:													
				All Results are emailed. Please provide Email address:													

† Cardinal cannot accept verbal changes. Please email changes to caley.keene@cardinallabsnm.com



**From:** [Chama, Sam](#)  
**To:** [Wells, Shelly, EMNRD](#)  
**Subject:** RE: [EXTERNAL] Variance Request - nLWH0117156550 LEARCY MCBUFFINGTON #008  
**Date:** Wednesday, November 12, 2025 1:48:00 PM  
**Attachments:** [image001.png](#)  
[image002.png](#)  
[image003.png](#)  
[image004.png](#)  
[image005.png](#)

---

Shelly,

Sorry I meant to write “the laboratory analytical data utilized for assessment purposes indicates there is **no** impact within the area”, I missed word in there. Big difference.

Thank you for catching that!

**Sam Chama, P.G. (TX)** | Project Geologist

Mobile +1 (509) 768-2191 | Business +1 (512) 338-2885 | Fax +1 (512) 338-1331 | [sam.chama@tetrattech.com](mailto:sam.chama@tetrattech.com)

**Tetra Tech** | *Leading with Science*® | OGA

8911 N. Capital of Texas Highway | Bldg. 2, Suite 2310 | Austin, TX 78759 | [tetrattech.com](http://tetrattech.com)

*This message, including any attachments, may include privileged, confidential and/or inside information. Any distribution or use of this communication by anyone other than the intended recipient is strictly prohibited and may be unlawful. If you are not the intended recipient, please notify the sender by replying to this message and then delete it from your system.*



Please consider the environment before printing. [Read more](#)



---

**From:** Wells, Shelly, EMNRD <[Shelly.Wells@emnrd.nm.gov](mailto:Shelly.Wells@emnrd.nm.gov)>

**Sent:** Wednesday, November 12, 2025 2:15 PM

**To:** Chama, Sam <[SAM.CHAMA@tetrattech.com](mailto:SAM.CHAMA@tetrattech.com)>

**Subject:** RE: [EXTERNAL] Variance Request - nLWH0117156550 LEARCY MCBUFFINGTON #008

⚠ **CAUTION:** This email originated from an external sender. Verify the source before opening links or attachments. ⚠

Hi Sam,

Thank you for submitting a variance request to me so quickly but I need to ask did you mean to say what is highlighted below?

Shelly

---

**From:** Chama, Sam <[SAM.CHAMA@tetrattech.com](mailto:SAM.CHAMA@tetrattech.com)>

**Sent:** Wednesday, November 12, 2025 1:04 PM

**To:** Wells, Shelly, EMNRD <[Shelly.Wells@emnrd.nm.gov](mailto:Shelly.Wells@emnrd.nm.gov)>

**Subject:** [EXTERNAL] Variance Request - nLWH0117156550 LEARCY MCBUFFINGTON #008

**CAUTION:** This email originated outside of our organization. Exercise caution prior to clicking on links or opening attachments.

Good afternoon,

I am requesting a variance to the standard rule regarding remediation closure 19.15.29.12.D. (1) NMAC, whereby testing of the affected area is performed with 'representative five-point composite samples from the walls and base' of an excavation. The variance requested is to allow the use of grab samples within an inferred remedial extent, for remediation closure, in place of five-point composite samples from an open excavation. The subject line incident (nLWH0117156550) is a historical release incident that was recorded as taking place on June 20, 2001, associated with a well that is now under the operation of JR Oil, Ltd. Co. (JR Oil). There is no C-141 document available in the NMOCD online database and no recorded volumes (lost or recovered) for the open incident. Based on a cursory review of historical aerial imagery, an inferred release extent was observed that was believed to be associated with the release incident.

A site visit conducted by Tetra Tech, on behalf of JR Oil, was performed to look for signs of any remaining impact associated with the release incident. No remaining impact was observed within the inferred release extent. Tetra Tech proceeded to gather soil samples from the inferred release extent for screening purposes with an ex-stick and PID to determine to what degree any remaining impact, if any, may be present. Results of the soil screening associated with soil samples collected within the inferred release extent indicated no remaining impact within the upper four feet of the pad surface. In order to demonstrate and confirm the lack of remaining impact associated with the subject line incident (nLWH0117156550), an assessment was performed of the inferred release extent in August of 2025. Soil samples were gathered from four borehole locations within the inferred release extent, transferred under chain of custody, within appropriate hold times, to an accredited laboratory. Results of the soil sampling event indicated collected soil samples were below reclamation requirements for chlorides, TPH, and BTEX.

Thus, as there was no remaining impact associated with the subject line incident (nLWH0117156550), the laboratory analytical data utilized for assessment purposes indicates there is impact within the area identified through historical aerial imagery. As such, based on the lack of visual evidence for any remaining impact and associated laboratory analytical results, JR Oil respectfully requests a variance from the NMOCD to allow the results of the August 2025 soil assessment to meet the remediation closure criteria within 19.15.29.12.D.(1) NMAC.

Thank you,

**Sam Chama, P.G. (TX)** | Project Geologist

Mobile +1 (509) 768-2191 | Business +1 (512) 338-2885 | Fax +1 (512) 338-1331 | [sam.chama@tetrattech.com](mailto:sam.chama@tetrattech.com)

**Tetra Tech** | *Leading with Science*<sup>®</sup> | OGA

8911 N. Capital of Texas Highway | Bldg. 2, Suite 2310 | Austin, TX 78759 | [tetratech.com](https://tetratech.com)

*This message, including any attachments, may include privileged, confidential and/or inside information. Any distribution or use of this communication by anyone other than the intended recipient is strictly prohibited and may be unlawful. If you are not the intended recipient, please notify the sender by replying to this message and then delete it from your system.*



Please consider the environment before printing. [Read more](#)



**TETRA TECH**

Sante Fe Main Office  
Phone: (505) 476-3441

General Information  
Phone: (505) 629-6116

Online Phone Directory  
<https://www.emnrd.nm.gov/ocd/contact-us>

**State of New Mexico**  
**Energy, Minerals and Natural Resources**  
**Oil Conservation Division**  
**1220 S. St Francis Dr.**  
**Santa Fe, NM 87505**

QUESTIONS

Action 516714

**QUESTIONS**

Operator: J R OIL, LTD. CO. P.O. Box 53657 Lubbock, TX 79453	OGRID: 256073
	Action Number: 516714
	Action Type: [C-141] Remediation Closure Request C-141 (C-141-v-Closure)

**QUESTIONS**

Prerequisites	
Incident ID (n#)	nLWH0117156550
Incident Name	NLWH0117156550 LEARCY MCBUFFINGTON #008 @ 30-025-11569
Incident Type	Oil Release
Incident Status	Remediation Closure Report Received
Incident Well	[30-025-11569] LEARCY MCBUFFINGTON #008

**Location of Release Source**

Please answer all the questions in this group.

Site Name	Learcy McBuffington #008
Date Release Discovered	06/20/2001
Surface Owner	Private

**Incident Details**

Please answer all the questions in this group.

Incident Type	Oil Release
Did this release result in a fire or is the result of a fire	No
Did this release result in any injuries	No
Has this release reached or does it have a reasonable probability of reaching a watercourse	No
Has this release endangered or does it have a reasonable probability of endangering public health	No
Has this release substantially damaged or will it substantially damage property or the environment	No
Is this release of a volume that is or may with reasonable probability be detrimental to fresh water	No

**Nature and Volume of Release**

Material(s) released, please answer all that apply below. Any calculations or specific justifications for the volumes provided should be attached to the follow-up C-141 submission.

Crude Oil Released (bbls) Details	Cause: Normal Operations   Unknown   Crude Oil   Released: 5 BBL   Recovered: 0 BBL   Lost: 5 BBL.
Produced Water Released (bbls) Details	Not answered.
Is the concentration of chloride in the produced water >10,000 mg/l	Not answered.
Condensate Released (bbls) Details	Not answered.
Natural Gas Vented (Mcf) Details	Not answered.
Natural Gas Flared (Mcf) Details	Not answered.
Other Released Details	Not answered.
Are there additional details for the questions above (i.e. any answer containing Other, Specify, Unknown, and/or Fire, or any negative lost amounts)	Incident took place during operation by differing operator (POGO PRODUCING CO). The Site ownership transferred to OXY USA INC in March of 2008 prior to ownership transferring to JR Oil (current operator) in March 2021. Thus, the exact details of the release are not known to the current operator.

Sante Fe Main Office  
Phone: (505) 476-3441

General Information  
Phone: (505) 629-6116

Online Phone Directory  
<https://www.emnrd.nm.gov/ocd/contact-us>

**State of New Mexico**  
**Energy, Minerals and Natural Resources**  
**Oil Conservation Division**  
**1220 S. St Francis Dr.**  
**Santa Fe, NM 87505**

QUESTIONS, Page 2

Action 516714

**QUESTIONS (continued)**

Operator: J R OIL, LTD. CO. P.O. Box 53657 Lubbock, TX 79453	OGRID: 256073
	Action Number: 516714
	Action Type: [C-141] Remediation Closure Request C-141 (C-141-v-Closure)

**QUESTIONS**

<b>Nature and Volume of Release (continued)</b>	
Is this a gas only submission (i.e. only significant Mcf values reported)	<b>More info needed to determine if this will be treated as a "gas only" report.</b>
Was this a major release as defined by Subsection A of 19.15.29.7 NMAC	<b>No</b>
Reasons why this would be considered a submission for a notification of a major release	<i>Unavailable.</i>
<i>With the implementation of the 19.15.27 NMAC (05/25/2021), venting and/or flaring of natural gas (i.e. gas only) are to be submitted on the C-129 form.</i>	

**Initial Response**

*The responsible party must undertake the following actions immediately unless they could create a safety hazard that would result in injury.*

The source of the release has been stopped	<b>True</b>
The impacted area has been secured to protect human health and the environment	<b>True</b>
Released materials have been contained via the use of berms or dikes, absorbent pads, or other containment devices	<b>True</b>
All free liquids and recoverable materials have been removed and managed appropriately	<b>True</b>
If all the actions described above have not been undertaken, explain why	<i>Not answered.</i>

*Per Paragraph (4) of Subsection B of 19.15.29.8 NMAC the responsible party may commence remediation immediately after discovery of a release. If remediation has begun, please prepare and attach a narrative of actions to date in the follow-up C-141 submission. If remedial efforts have been successfully completed or if the release occurred within a lined containment area (see Subparagraph (a) of Paragraph (5) of Subsection A of 19.15.29.11 NMAC), please prepare and attach all information needed for closure evaluation in the follow-up C-141 submission.*

I hereby certify that the information given above is true and complete to the best of my knowledge and understand that pursuant to OCD rules and regulations all operators are required to report and/or file certain release notifications and perform corrective actions for releases which may endanger public health or the environment. The acceptance of a C-141 report by the OCD does not relieve the operator of liability should their operations have failed to adequately investigate and remediate contamination that pose a threat to groundwater, surface water, human health or the environment. In addition, OCD acceptance of a C-141 report does not relieve the operator of responsibility for compliance with any other federal, state, or local laws and/or regulations.

I hereby agree and sign off to the above statement	Name: Brittany Long Title: Consultant Email: <a href="mailto:brittany.long@tetrattech.com">brittany.long@tetrattech.com</a> Date: 10/17/2025
--	---



Sante Fe Main Office  
Phone: (505) 476-3441

General Information  
Phone: (505) 629-6116

Online Phone Directory  
<https://www.emnrd.nm.gov/ocd/contact-us>

**State of New Mexico**  
**Energy, Minerals and Natural Resources**  
**Oil Conservation Division**  
**1220 S. St Francis Dr.**  
**Santa Fe, NM 87505**

QUESTIONS, Page 3

Action 516714

**QUESTIONS (continued)**

Operator: J R OIL, LTD. CO. P.O. Box 53657 Lubbock, TX 79453	OGRID:
	256073
	Action Number:
	516714
Action Type:	
[C-141] Remediation Closure Request C-141 (C-141-v-Closure)	

**QUESTIONS**

<b>Site Characterization</b>	
<i>Please answer all the questions in this group (only required when seeking remediation plan approval and beyond). This information must be provided to the appropriate district office no later than 90 days after the release discovery date.</i>	
What is the shallowest depth to groundwater beneath the area affected by the release in feet below ground surface (ft bgs)	Between 51 and 75 (ft.)
What method was used to determine the depth to ground water	NM OSE iWaters Database Search
Did this release impact groundwater or surface water	No
<b>What is the minimum distance, between the closest lateral extents of the release and the following surface areas:</b>	
A continuously flowing watercourse or any other significant watercourse	Between 1 and 5 (mi.)
Any lakebed, sinkhole, or playa lake (measured from the ordinary high-water mark)	Between 1 and 5 (mi.)
An occupied permanent residence, school, hospital, institution, or church	Between 1 and 5 (mi.)
A spring or a private domestic fresh water well used by less than five households for domestic or stock watering purposes	Between 1 and 5 (mi.)
Any other fresh water well or spring	Between 1 and 5 (mi.)
Incorporated municipal boundaries or a defined municipal fresh water well field	Between 1 and 5 (mi.)
A wetland	Between 1 and 5 (mi.)
A subsurface mine	Greater than 5 (mi.)
An (non-karst) unstable area	Between 1 and 5 (mi.)
Categorize the risk of this well / site being in a karst geology	Low
A 100-year floodplain	Between 1 and 5 (mi.)
Did the release impact areas not on an exploration, development, production, or storage site	No

<b>Remediation Plan</b>	
<i>Please answer all the questions that apply or are indicated. This information must be provided to the appropriate district office no later than 90 days after the release discovery date.</i>	
Requesting a remediation plan approval with this submission	Yes
<i>Attach a comprehensive report demonstrating the lateral and vertical extents of soil contamination associated with the release have been determined, pursuant to 19.15.29.11 NMAC and 19.15.29.13 NMAC.</i>	
Have the lateral and vertical extents of contamination been fully delineated	Yes
Was this release entirely contained within a lined containment area	No
<b>Soil Contamination Sampling:</b> (Provide the highest observable value for each, in milligrams per kilograms.)	
Chloride (EPA 300.0 or SM4500 Cl B)	160
TPH (GRO+DRO+MRO) (EPA SW-846 Method 8015M)	0
GRO+DRO (EPA SW-846 Method 8015M)	0
BTEX (EPA SW-846 Method 8021B or 8260B)	0
Benzene (EPA SW-846 Method 8021B or 8260B)	0
<i>Per Subsection B of 19.15.29.11 NMAC unless the site characterization report includes completed efforts at remediation, the report must include a proposed remediation plan in accordance with 19.15.29.12 NMAC, which includes the anticipated timelines for beginning and completing the remediation.</i>	
On what estimated date will the remediation commence	08/08/2025
On what date will (or did) the final sampling or liner inspection occur	08/08/2025
On what date will (or was) the remediation complete(d)	08/08/2025
What is the estimated surface area (in square feet) that will be reclaimed	398
What is the estimated volume (in cubic yards) that will be reclaimed	0
What is the estimated surface area (in square feet) that will be remediated	398
What is the estimated volume (in cubic yards) that will be remediated	0
<i>These estimated dates and measurements are recognized to be the best guess or calculation at the time of submission and may (be) change(d) over time as more remediation efforts are completed.</i>	
<i>The OCD recognizes that proposed remediation measures may have to be minimally adjusted in accordance with the physical realities encountered during remediation. If the responsible party has any need to significantly deviate from the remediation plan proposed, then it should consult with the division to determine if another remediation plan submission is required.</i>	

Sante Fe Main Office  
Phone: (505) 476-3441

General Information  
Phone: (505) 629-6116

Online Phone Directory  
<https://www.emnrd.nm.gov/ocd/contact-us>

**State of New Mexico**  
**Energy, Minerals and Natural Resources**  
**Oil Conservation Division**  
**1220 S. St Francis Dr.**  
**Santa Fe, NM 87505**

QUESTIONS, Page 4

Action 516714

**QUESTIONS (continued)**

Operator: J R OIL, LTD. CO. P.O. Box 53657 Lubbock, TX 79453	OGRID: 256073
	Action Number: 516714
	Action Type: [C-141] Remediation Closure Request C-141 (C-141-v-Closure)

**QUESTIONS**

<b>Remediation Plan (continued)</b>	
<i>Please answer all the questions that apply or are indicated. This information must be provided to the appropriate district office no later than 90 days after the release discovery date.</i>	
<b>This remediation will (or is expected to) utilize the following processes to remediate / reduce contaminants:</b>	
<i>(Select all answers below that apply.)</i>	
(Ex Situ) Excavation and <b>off-site</b> disposal (i.e. dig and haul, hydrovac, etc.)	No
(Ex Situ) Excavation and <b>on-site</b> remediation (i.e. On-Site Land Farms)	No
(In Situ) Soil Vapor Extraction	No
(In Situ) Chemical processing (i.e. Soil Shredding, Potassium Permanganate, etc.)	No
(In Situ) Biological processing (i.e. Microbes / Fertilizer, etc.)	No
(In Situ) Physical processing (i.e. Soil Washing, Gypsum, Disking, etc.)	No
Ground Water Abatement pursuant to 19.15.30 NMAC	No
OTHER (Non-listed remedial process)	Yes
Other Non-listed Remedial Process. Please specify	Remedial action taken is undetermined. Remedial action appears to have taken by a previous operator, prior to transfer of ownership to current operator. A confirmation of no remaining impact was performed through soil sampling to establish that a remediation was executed at some time in the past prior to transfer of ownership, likely under the original operator at the time of the release POGO. See attached report for details.
<i>Per Subsection B of 19.15.29.11 NMAC unless the site characterization report includes completed efforts at remediation, the report must include a proposed remediation plan in accordance with 19.15.29.12 NMAC, which includes the anticipated timelines for beginning and completing the remediation.</i>	
I hereby certify that the information given above is true and complete to the best of my knowledge and understand that pursuant to OCD rules and regulations all operators are required to report and/or file certain release notifications and perform corrective actions for releases which may endanger public health or the environment. The acceptance of a C-141 report by the OCD does not relieve the operator of liability should their operations have failed to adequately investigate and remediate contamination that pose a threat to groundwater, surface water, human health or the environment. In addition, OCD acceptance of a C-141 report does not relieve the operator of responsibility for compliance with any other federal, state, or local laws and/or regulations.	
I hereby agree and sign off to the above statement	Name: Brittany Long Title: Consultant Email: <a href="mailto:brittany.long@tetrattech.com">brittany.long@tetrattech.com</a> Date: 10/17/2025
<i>The OCD recognizes that proposed remediation measures may have to be minimally adjusted in accordance with the physical realities encountered during remediation. If the responsible party has any need to significantly deviate from the remediation plan proposed, then it should consult with the division to determine if another remediation plan submission is required.</i>	

Sante Fe Main Office  
Phone: (505) 476-3441

General Information  
Phone: (505) 629-6116

Online Phone Directory  
<https://www.emnrd.nm.gov/ocd/contact-us>

State of New Mexico  
Energy, Minerals and Natural Resources  
Oil Conservation Division  
1220 S. St Francis Dr.  
Santa Fe, NM 87505

QUESTIONS, Page 5

Action 516714

QUESTIONS (continued)

Operator: J R OIL, LTD. CO. P.O. Box 53657 Lubbock, TX 79453	OGRID: 256073
	Action Number: 516714
	Action Type: [C-141] Remediation Closure Request C-141 (C-141-v-Closure)

QUESTIONS

Deferral Requests Only	
Only answer the questions in this group if seeking a deferral upon approval this submission. Each of the following items must be confirmed as part of any request for deferral of remediation.	
Requesting a deferral of the remediation closure due date with the approval of this submission	No

Sante Fe Main Office  
Phone: (505) 476-3441

General Information  
Phone: (505) 629-6116

Online Phone Directory  
<https://www.emnrd.nm.gov/ocd/contact-us>

**State of New Mexico**  
**Energy, Minerals and Natural Resources**  
**Oil Conservation Division**  
**1220 S. St Francis Dr.**  
**Santa Fe, NM 87505**

QUESTIONS, Page 6

Action 516714

**QUESTIONS (continued)**

Operator: J R OIL, LTD. CO. P.O. Box 53657 Lubbock, TX 79453	OGRID: 256073
	Action Number: 516714
	Action Type: [C-141] Remediation Closure Request C-141 (C-141-v-Closure)

**QUESTIONS**

Sampling Event Information	
Last sampling notification (C-141N) recorded	496162
Sampling date pursuant to Subparagraph (a) of Paragraph (1) of Subsection D of 19.15.29.12 NMAC	08/07/2025
What was the (estimated) number of samples that were to be gathered	16
What was the sampling surface area in square feet	250

Remediation Closure Request	
<i>Only answer the questions in this group if seeking remediation closure for this release because all remediation steps have been completed.</i>	
Requesting a remediation closure approval with this submission	Yes
Have the lateral and vertical extents of contamination been fully delineated	Yes
Was this release entirely contained within a lined containment area	No
All areas reasonably needed for production or subsequent drilling operations have been stabilized, returned to the sites existing grade, and have a soil cover that prevents ponding of water, minimizing dust and erosion	Yes
What was the total surface area (in square feet) remediated	398
What was the total volume (cubic yards) remediated	55
All areas not reasonably needed for production or subsequent drilling operations have been reclaimed to contain a minimum of four feet of non-waste contain earthen material with concentrations less than 600 mg/kg chlorides, 100 mg/kg TPH, 50 mg/kg BTEX, and 10 mg/kg Benzene	Yes
What was the total surface area (in square feet) reclaimed	398
What was the total volume (in cubic yards) reclaimed	55
Summarize any additional remediation activities not included by answers (above)	No additional comments
<i>The responsible party must attach information demonstrating they have complied with all applicable closure requirements and any conditions or directives of the OCD. This demonstration should be in the form of a comprehensive report (in .pdf format) including a scaled site map, sampling diagrams, relevant field notes, photographs of any excavation prior to backfilling, laboratory data including chain of custody documents of final sampling, and a narrative of the remedial activities. Refer to 19.15.29.12 NMAC.</i>	
I hereby certify that the information given above is true and complete to the best of my knowledge and understand that pursuant to OCD rules and regulations all operators are required to report and/or file certain release notifications and perform corrective actions for releases which may endanger public health or the environment. The acceptance of a C-141 report by the OCD does not relieve the operator of liability should their operations have failed to adequately investigate and remediate contamination that pose a threat to groundwater, surface water, human health or the environment. In addition, OCD acceptance of a C-141 report does not relieve the operator of responsibility for compliance with any other federal, state, or local laws and/or regulations. The responsible party acknowledges they must substantially restore, reclaim, and re-vegetate the impacted surface area to the conditions that existed prior to the release or their final land use in accordance with 19.15.29.13 NMAC including notification to the OCD when reclamation and re-vegetation are complete.	
I hereby agree and sign off to the above statement	Name: Brittany Long Title: Consultant Email: <a href="mailto:brittany.long@tetrattech.com">brittany.long@tetrattech.com</a> Date: 10/17/2025

Sante Fe Main Office  
Phone: (505) 476-3441

General Information  
Phone: (505) 629-6116

Online Phone Directory  
<https://www.emnrd.nm.gov/ocd/contact-us>

State of New Mexico  
Energy, Minerals and Natural Resources  
Oil Conservation Division  
1220 S. St Francis Dr.  
Santa Fe, NM 87505

QUESTIONS, Page 7  
  
Action 516714

QUESTIONS (continued)

Operator:  J R OIL, LTD. CO. P.O. Box 53657 Lubbock, TX 79453	OGRID:  256073
	Action Number:  516714
	Action Type:  [C-141] Remediation Closure Request C-141 (C-141-v-Closure)

QUESTIONS

Reclamation Report	
Only answer the questions in this group if all reclamation steps have been completed.	
Requesting a reclamation approval with this submission	No



Sante Fe Main Office  
Phone: (505) 476-3441

General Information  
Phone: (505) 629-6116

Online Phone Directory  
<https://www.emnrd.nm.gov/oecd/contact-us>

State of New Mexico  
Energy, Minerals and Natural Resources  
Oil Conservation Division  
1220 S. St Francis Dr.  
Santa Fe, NM 87505

CONDITIONS

Action 516714

CONDITIONS

Operator: J R OIL, LTD. CO. P.O. Box 53657 Lubbock, TX 79453	OGRID: 256073
	Action Number: 516714
	Action Type: [C-141] Remediation Closure Request C-141 (C-141-v-Closure)

CONDITIONS

Created By	Condition	Condition Date
scwells	None	11/12/2025