



SITE INFORMATION

Closure Report
Myox 31 State Com 501H (08.04.24)
Incident #: nAPP2426831113
Eddy County, New Mexico
Unit O Sec 31 T25S R28E
32.081110°, -104.126274°

Produced Water Release
Point of Release: Equipment Failure
Release Date: 08/04/2024
Volume Released: 7 barrels of Produced Water
Volume Recovered: 7 barrels of Produced Water

CARMONA RESOURCES



Prepared for:
Concho Operating, LLC
15 West London Road
Loving, New Mexico 88256

Prepared by:
Carmona Resources, LLC
310 West Wall Street
Suite 415
Midland, Texas 79701

310 West Wall Street, Suite 415
Midland TX, 79701
432.813.1992

TABLE OF CONTENTS

1.0 SITE INFORMATION AND BACKGROUND

2.0 SITE CHARACTERIZATION AND GROUNDWATER

3.0 NMAC REGULATORY CRITERIA

4.0 LINER INSPECTION ACTIVITIES

5.0 CONCLUSIONS

FIGURES

FIGURE 1 OVERVIEW FIGURE 2 TOPOGRAPHIC

FIGURE 3 SECONDARY CONTAINMENT MAP

APPENDICES

APPENDIX A PHOTOS
APPENDIX B N.O.R AND FINAL C-141/NMOCD CORRESPONDENCE
APPENDIX C SITE CHARACTERIZATION AND GROUNDWATER

January 29, 2026

Mike Bratcher
District Supervisor
Oil Conservation Division, District 2
811 S. First Street
Artesia, New Mexico 88210

**Re: Closure Report
Myox 31 State Com 501H (08.04.24)
Concho Operating, LLC
Incident ID: nAPP2426831113
Site Location: Unit O, S31, T25S, R28E
(Lat 32.081110°, Long -104.126274°)
Eddy County, New Mexico**

Mr. Bratcher:

On behalf of Concho Operating, LLC (COG), Carmona Resources, LLC has prepared this letter to document site activities for the Myox 31 State Com 501H (08.04.24). The site is located at 32.081110°, -104.126274° within Unit O, S31, T25S, R28E, in Eddy County, New Mexico (Figures 1 and 2).

1.0 Site information and Background

Based on the Notice of Release obtained from the New Mexico Oil Conservation Division (NMOCD), the release was discovered on August 4, 2024, due to equipment failure within the facility containment. The incident resulted in approximately seven (7) barrels of produced water being released while seven (7) barrels of produced water were recovered. See Figure 3 for the secondary containment map. The Notice of Release is attached in Appendix B.

2.0 Site Characterization and Groundwater

The site is located within a high karst area. Based on a review of the New Mexico Office of State Engineers and USGS databases, no known water sources are within a 0.50-mile radius of the location. The closest well is located approximately 1.73 miles Northeast of the site in S29, T25S, R28E and was drilled in 2003. The well has a reported depth to groundwater of 20.33' feet below ground surface (ft bgs). A copy of the associated point of diversion is attached in Appendix C.

3.0 NMAC Regulatory Criteria

Per the NMOCD regulatory criteria established in 19.15.29.12 NMAC, the following criteria were utilized in assessing the site.

- Benzene: 10 milligrams per kilogram (mg/kg).
- Benzene, toluene, ethylbenzene, and total xylenes (BTEX): 50 mg/kg.
- TPH: 100 mg/kg (GRO + DRO + MRO).
- Chloride: 600 mg/kg.



4.0 Liner Inspection Activities

Before conducting the liner inspection, a crew was onsite to remove all impacted pea gravel so the liner would be free of any freestanding fluids. Once the plastic liner was thoroughly cleaned, the NMOCD division office was notified via NMOCD portal on January 26 2026, per Subsection D of 19.15.29.12 NMAC. See Appendix B for the NMOCD correspondence prior to performing the liner inspection. On January 29, 2026, Carmona Resources, LLC conducted liner inspection activities to assess the liner's integrity within the facility and determined the liner was intact with no integrity issues. Refer to the Photolog for details.

5.0 Conclusions

Based on the liner inspection throughout the facility, no further actions are required at the site. COG formally requests closure of the spill. If you have any questions regarding this report or need additional information, don't hesitate to contact us at 432-813-6823.

Sincerely,

Carmona Resources, LLC

Conner Moehring
Environmental Managers

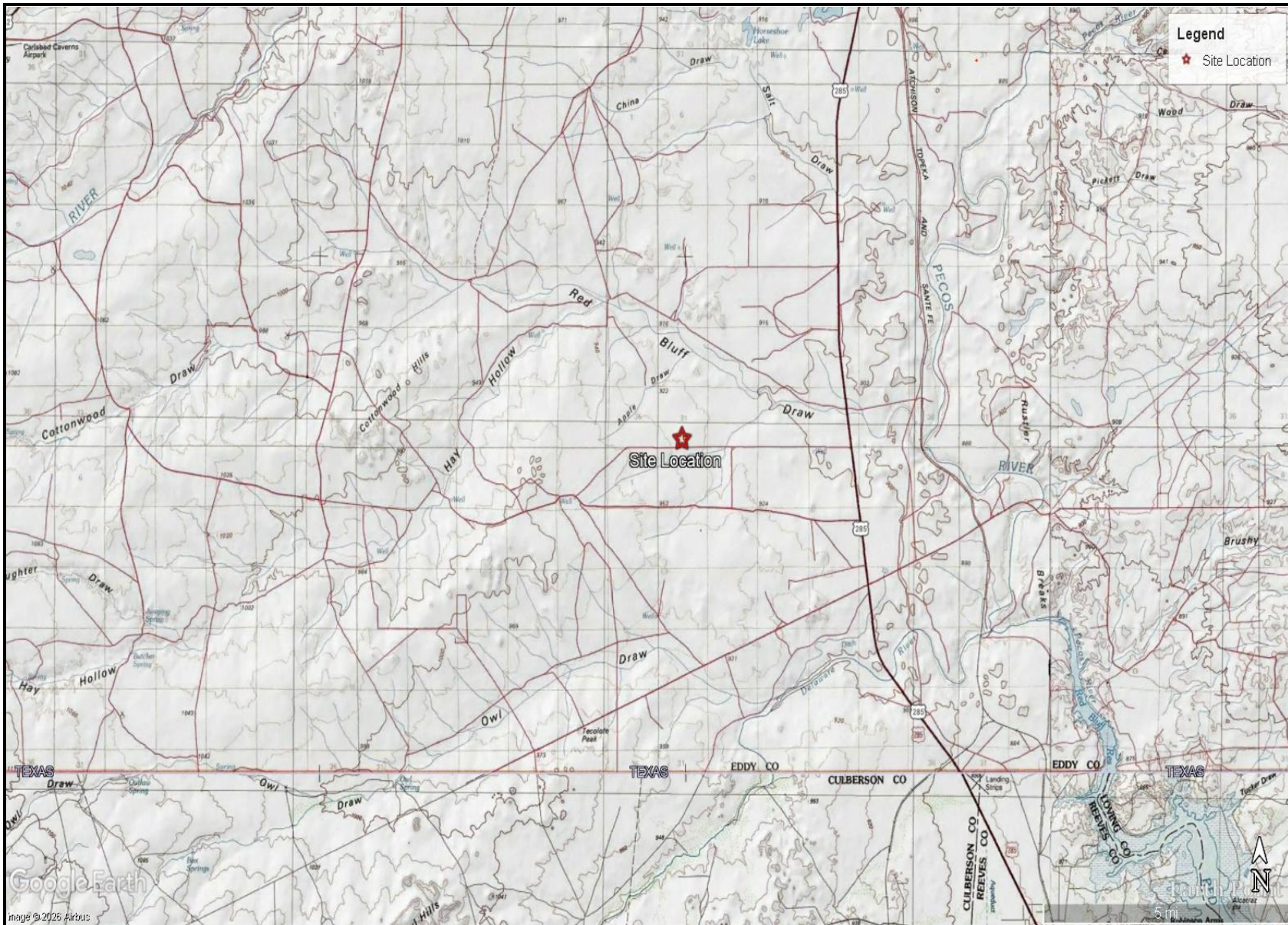
FIGURES

CARMONA RESOURCES





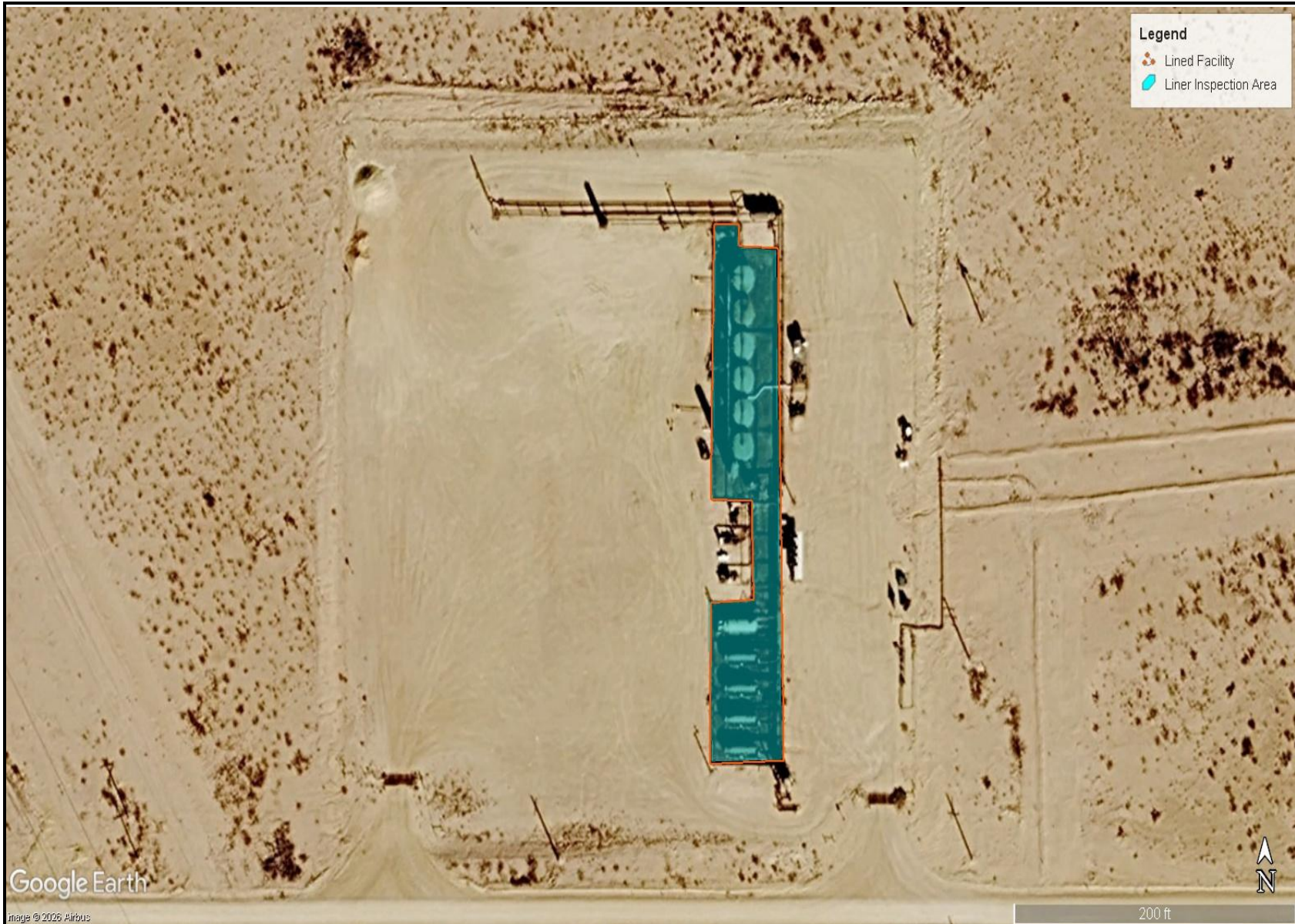
<p>OVERVIEW MAP CONOCO PHILLIPS MYOX 31-O CTB EDDY COUNTY, NEW MEXICO 32.081110, -104.126274</p>	<p>CARMONA RESOURCES </p>	<p>FIGURE 1</p>
--	--	-----------------




TOPOGRAPHIC MAP
CONOCO PHILLIPS
MYOX 31-O CTB
EDDY COUNTY, NEW MEXICO
32.081110, -104.126274



FIGURE 2



<p>SECONDARY CONTAINMENT MAP CONOCO PHILLIPS MYOX 31-O CTB EDDY COUNTY, NEW MEXICO 32.081110, -104.126274</p>	<p>CARMONA RESOURCES </p>	<p>FIGURE 3</p>
---	--	-----------------

APPENDIX A

CARMONA RESOURCES



PHOTOGRAPHIC LOG

COG Operating, LLC

Photograph No. 1

Facility: Myox 31 State Com 501H

County: Eddy County, New Mexico

Description:

View North, area of liner inspection. After the liner has been cleaned. The red outline is the area of the liner inspection.



Photograph No. 2

Facility: Myox 31 State Com 501H

County: Eddy County, New Mexico

Description:

View South, area of liner inspection. After the liner has been cleaned. The red outline is the area of the liner inspection.



Photograph No. 3

Facility: Myox 31 State Com 501H

County: Eddy County, New Mexico

Description:

View South, area of liner inspection. After the liner has been cleaned. The red outline is the area of the liner inspection.



APPENDIX B

CARMONA RESOURCES



Spill Calculation - On-Pad Surface Pool Spill

Received by OCD: 2/2/2026 9:57:20 AM

Page 12 of 38

Convert Irregular shape into a series of rectangles	Length (ft.)	Width (ft.)	Average Depth (in.)	Estimated <u>Pool</u> Area (sq. ft.)	Estimated volume of each pool area (bbl.)	Penetration allowance (ft.)	Total Estimated Volume of Spill (bbl.)	Percentage of Oil if Spilled Fluid is a Mixture (%)	Total Estimated Volume of Spilled Oil (bbl.)	Total Estimated Volume of Spilled Liquid other than Oil (bbl.)
Rectangle A	50	25	1.0	1250.00	7.42	0.00	7.42		0.00	7.42
Rectangle B				0.00	0.00	0.00	0.00		0.00	0.00
Rectangle C				0.00	0.00	0.00	0.00		0.00	0.00
Rectangle D				0.00	0.00	0.00	0.00		0.00	0.00
Rectangle E				0.00	0.00	0.00	0.00		0.00	0.00
Rectangle F				0.00	0.00	0.00	0.00		0.00	0.00
Rectangle G				0.00	0.00	0.00	0.00		0.00	0.00
Rectangle H				0.00	0.00	0.00	0.00		0.00	0.00
Rectangle I				0.00	0.00	0.00	0.00		0.00	0.00
Rectangle J				0.00	0.00	0.00	0.00		0.00	0.00
Total Volume Released to Unlined Secondary Containment:							7.4167		0.0000	7.4167
Total Volume Released to Lined Secondary Containment:							7.4167		0.0000	7.4167

Released to Imaging: 2/2/2026 3:47:32 PM

District I
 1625 N. French Dr., Hobbs, NM 88240
 Phone:(575) 393-6161 Fax:(575) 393-0720
District II
 811 S. First St., Artesia, NM 88210
 Phone:(575) 748-1283 Fax:(575) 748-9720
District III
 1000 Rio Brazos Rd., Aztec, NM 87410
 Phone:(505) 334-6178 Fax:(505) 334-6170
District IV
 1220 S. St Francis Dr., Santa Fe, NM 87505
 Phone:(505) 476-3470 Fax:(505) 476-3462

State of New Mexico
Energy, Minerals and Natural Resources
Oil Conservation Division
1220 S. St Francis Dr.
Santa Fe, NM 87505

QUESTIONS

Action 386093

QUESTIONS

Operator: COG OPERATING LLC 600 W Illinois Ave Midland, TX 79701	OGRID: 229137
	Action Number: 386093
	Action Type: [C-141] Initial C-141 (C-141-v-Initial)

QUESTIONS

Prerequisites	
Incident ID (n#)	nAPP2426831113
Incident Name	NAPP2426831113 MYOX 31 STATE COM 501H @ 0
Incident Type	Produced Water Release
Incident Status	Initial C-141 Received
Incident Facility	[fAPP2131529102] Myox 31 O St Com BTTY

Location of Release Source	
<i>Please answer all the questions in this group.</i>	
Site Name	Myox 31 State Com 501H
Date Release Discovered	08/04/2024
Surface Owner	State

Incident Details	
<i>Please answer all the questions in this group.</i>	
Incident Type	Produced Water Release
Did this release result in a fire or is the result of a fire	No
Did this release result in any injuries	No
Has this release reached or does it have a reasonable probability of reaching a watercourse	No
Has this release endangered or does it have a reasonable probability of endangering public health	No
Has this release substantially damaged or will it substantially damage property or the environment	No
Is this release of a volume that is or may with reasonable probability be detrimental to fresh water	No

Nature and Volume of Release	
<i>Material(s) released, please answer all that apply below. Any calculations or specific justifications for the volumes provided should be attached to the follow-up C-141 submission.</i>	
Crude Oil Released (bbls) Details	Not answered.
Produced Water Released (bbls) Details	Cause: Equipment Failure Pump Produced Water Released: 7 BBL Recovered: 7 BBL Lost: 0 BBL.
Is the concentration of chloride in the produced water >10,000 mg/l	Yes
Condensate Released (bbls) Details	Not answered.
Natural Gas Vented (Mcf) Details	Not answered.
Natural Gas Flared (Mcf) Details	Not answered.
Other Released Details	Not answered.
Are there additional details for the questions above (i.e. any answer containing Other, Specify, Unknown, and/or Fire, or any negative lost amounts)	Not answered.

District I
 1625 N. French Dr., Hobbs, NM 88240
 Phone:(575) 393-6161 Fax:(575) 393-9720
District II
 811 S. First St., Artesia, NM 88210
 Phone:(575) 748-1283 Fax:(575) 748-9720
District III
 1000 Rio Brazos Rd., Aztec, NM 87410
 Phone:(505) 334-6178 Fax:(505) 334-6170
District IV
 1220 S. St Francis Dr., Santa Fe, NM 87505
 Phone:(505) 476-3470 Fax:(505) 476-3462

State of New Mexico
Energy, Minerals and Natural Resources
Oil Conservation Division
1220 S. St Francis Dr.
Santa Fe, NM 87505

QUESTIONS, Page 2

Action 386093

QUESTIONS (continued)

Operator: COG OPERATING LLC 600 W Illinois Ave Midland, TX 79701	OGRID: 229137
	Action Number: 386093
	Action Type: [C-141] Initial C-141 (C-141-v-Initial)

QUESTIONS

Nature and Volume of Release (continued)	
Is this a gas only submission (i.e. only significant Mcf values reported)	No, according to supplied volumes this does not appear to be a "gas only" report.
Was this a major release as defined by Subsection A of 19.15.29.7 NMAC	No
Reasons why this would be considered a submission for a notification of a major release	<i>Unavailable.</i>

With the implementation of the 19.15.27 NMAC (05/25/2021), venting and/or flaring of natural gas (i.e. gas only) are to be submitted on the C-129 form.

Initial Response

The responsible party must undertake the following actions immediately unless they could create a safety hazard that would result in injury.

The source of the release has been stopped	True
The impacted area has been secured to protect human health and the environment	True
Released materials have been contained via the use of berms or dikes, absorbent pads, or other containment devices	True
All free liquids and recoverable materials have been removed and managed appropriately	True
If all the actions described above have not been undertaken, explain why	<i>Not answered.</i>

Per Paragraph (4) of Subsection B of 19.15.29.8 NMAC the responsible party may commence remediation immediately after discovery of a release. If remediation has begun, please prepare and attach a narrative of actions to date in the follow-up C-141 submission. If remedial efforts have been successfully completed or if the release occurred within a lined containment area (see Subparagraph (a) of Paragraph (5) of Subsection A of 19.15.29.11 NMAC), please prepare and attach all information needed for closure evaluation in the follow-up C-141 submission.

I hereby certify that the information given above is true and complete to the best of my knowledge and understand that pursuant to OCD rules and regulations all operators are required to report and/or file certain release notifications and perform corrective actions for releases which may endanger public health or the environment. The acceptance of a C-141 report by the OCD does not relieve the operator of liability should their operations have failed to adequately investigate and remediate contamination that pose a threat to groundwater, surface water, human health or the environment. In addition, OCD acceptance of a C-141 report does not relieve the operator of responsibility for compliance with any other federal, state, or local laws and/or regulations.

I hereby agree and sign off to the above statement	Name: Brittany Esparza Title: Environmental Technician Email: brittany.Esparza@ConocoPhillips.com Date: 09/24/2024
--	---

District I
 1625 N. French Dr., Hobbs, NM 88240
 Phone:(575) 393-6161 Fax:(575) 393-0720
District II
 811 S. First St., Artesia, NM 88210
 Phone:(575) 748-1283 Fax:(575) 748-9720
District III
 1000 Rio Brazos Rd., Aztec, NM 87410
 Phone:(505) 334-6178 Fax:(505) 334-6170
District IV
 1220 S. St Francis Dr., Santa Fe, NM 87505
 Phone:(505) 476-3470 Fax:(505) 476-3462

State of New Mexico
Energy, Minerals and Natural Resources
Oil Conservation Division
1220 S. St Francis Dr.
Santa Fe, NM 87505

QUESTIONS (continued)

Operator: COG OPERATING LLC 600 W Illinois Ave Midland, TX 79701	OGRID: 229137
	Action Number: 386093
	Action Type: [C-141] Initial C-141 (C-141-v-Initial)

QUESTIONS

Site Characterization
 Please answer all the questions in this group (only required when seeking remediation plan approval and beyond). This information must be provided to the appropriate district office no later than 90 days after the release discovery date.

What is the shallowest depth to groundwater beneath the area affected by the release in feet below ground surface (ft bgs)	Not answered.
What method was used to determine the depth to ground water	Not answered.
Did this release impact groundwater or surface water	Not answered.
What is the minimum distance, between the closest lateral extents of the release and the following surface areas:	
A continuously flowing watercourse or any other significant watercourse	Not answered.
Any lakebed, sinkhole, or playa lake (measured from the ordinary high-water mark)	Not answered.
An occupied permanent residence, school, hospital, institution, or church	Not answered.
A spring or a private domestic fresh water well used by less than five households for domestic or stock watering purposes	Not answered.
Any other fresh water well or spring	Not answered.
Incorporated municipal boundaries or a defined municipal fresh water well field	Not answered.
A wetland	Not answered.
A subsurface mine	Not answered.
An (non-karst) unstable area	Not answered.
Categorize the risk of this well / site being in a karst geology	Not answered.
A 100-year floodplain	Not answered.
Did the release impact areas not on an exploration, development, production, or storage site	Not answered.

Remediation Plan	
Please answer all the questions that apply or are indicated. This information must be provided to the appropriate district office no later than 90 days after the release discovery date.	
Requesting a remediation plan approval with this submission	No
The OCD recognizes that proposed remediation measures may have to be minimally adjusted in accordance with the physical realities encountered during remediation. If the responsible party has any need to significantly deviate from the remediation plan proposed, then it should consult with the division to determine if another remediation plan submission is required.	

District I
 1625 N. French Dr., Hobbs, NM 88240
 Phone:(575) 393-6161 Fax:(575) 393-0720

District II
 811 S. First St., Artesia, NM 88210
 Phone:(575) 748-1283 Fax:(575) 748-9720

District III
 1000 Rio Brazos Rd., Aztec, NM 87410
 Phone:(505) 334-6178 Fax:(505) 334-6170

District IV
 1220 S. St Francis Dr., Santa Fe, NM 87505
 Phone:(505) 476-3470 Fax:(505) 476-3462

State of New Mexico
Energy, Minerals and Natural Resources
Oil Conservation Division
1220 S. St Francis Dr.
Santa Fe, NM 87505

CONDITIONS
 Action 386093

CONDITIONS

Operator: COG OPERATING LLC 600 W Illinois Ave Midland, TX 79701	OGRID: 229137
	Action Number: 386093
	Action Type: [C-141] Initial C-141 (C-141-v-Initial)

CONDITIONS

Created By	Condition	Condition Date
rhamlet	None	9/25/2024

Sante Fe Main Office
Phone: (505) 476-3441

General Information
Phone: (505) 629-6116

Online Phone Directory
<https://www.emnrd.nm.gov/ocd/contact-us>

**State of New Mexico
Energy, Minerals and Natural Resources
Oil Conservation Division
1220 S. St Francis Dr.
Santa Fe, NM 87505**

QUESTIONS

Action 546277

QUESTIONS

Operator: COG OPERATING LLC 600 W Illinois Ave Midland, TX 79701	OGRID: 229137
	Action Number: 546277
	Action Type: [NOTIFY] Notification Of Liner Inspection (C-141L)

QUESTIONS

Prerequisites	
Incident ID (n#)	nAPP2426831113
Incident Name	NAPP2426831113 MYOX 31 STATE COM 501H @ 0
Incident Type	Produced Water Release
Incident Status	Initial C-141 Approved
Incident Facility	[fAPP2131529102] Myox 31 O St Com BTTY

Location of Release Source	
Site Name	Myox 31 State Com 501H
Date Release Discovered	08/04/2024
Surface Owner	State

Liner Inspection Event Information	
<i>Please answer all the questions in this group.</i>	
What is the liner inspection surface area in square feet	1,500
Have all the impacted materials been removed from the liner	Yes
Liner inspection date pursuant to Subparagraph (a) of Paragraph (5) of Subsection A of 19.15.29.11 NMAC	01/29/2026
Time liner inspection will commence	08:00 AM
Please provide any information necessary for observers to liner inspection	Carmona Resources - 4328136823
Please provide any information necessary for navigation to liner inspection site	Coordinates on C141

Sante Fe Main Office
Phone: (505) 476-3441

General Information
Phone: (505) 629-6116

Online Phone Directory
<https://www.emnrd.nm.gov/ocd/contact-us>

State of New Mexico
Energy, Minerals and Natural Resources
Oil Conservation Division
1220 S. St Francis Dr.
Santa Fe, NM 87505

CONDITIONS

Action 546277

CONDITIONS

Operator: COG OPERATING LLC 600 W Illinois Ave Midland, TX 79701	OGRID: 229137
	Action Number: 546277
	Action Type: [NOTIFY] Notification Of Liner Inspection (C-141L)

CONDITIONS

Created By	Condition	Condition Date
jacquih	Failure to notify the OCD of liner inspections including any changes in date/time per the requirements of 19.15.29.11.A(5)(a)(ii) NMAC, may result in the inspection not being accepted.	1/26/2026

APPENDIX C

CARMONA RESOURCES



Legend

- 0.50 Mile Radius
- 1.73 Miles
- 1.83 Miles
- 1.89 Miles
- 2.13 Miles
- 2.14 Miles
- Myox 31 State Com 501H
- NMSEO Water Well
- USGS Water Well



High Karst

COG Operating

Legend

- High
- Medium
- Myox 31 State Com 501H



Myox 31 State Com 501H





New Mexico Office of the State Engineer

Water Column/Average Depth to Water

(A CLW##### in the POD suffix indicates the POD has been replaced & no longer serves a water right file.) (R=POD has been replaced, O=orphaned, C=the file is closed)

(quarters are smallest to largest)

(meters)

(In feet)

POD Number	Code	Sub basin	County	Q64	Q16	Q4	Sec	Tws	Range	X	Y	Map	Distance	Well Depth	Depth Water	Water Column
C 04988 POD1		CUB	ED	SE	NW	SW	32	25S	28E	583645.3	3550114.8	●	1237	29		
C 04988 POD2		CUB	ED	NW	NE	SW	32	25S	28E	583664.2	3550154.7	●	1267	28		
C 04988 POD3		CUB	ED	NW	NE	SW	32	25S	28E	583669.9	3550193.2	●	1285	28		
C 04988 POD4		CUB	ED	NW	NE	SW	32	25S	28E	583695.2	3550169.4	●	1301	28		
C 02478		CUB	ED		NE	NW	05	26S	28E	583848.0	3549325.0 *	●	1454	100		
C 04766 POD2		CUB	ED	NE	NE	SE	32	25S	28E	584716.1	3550140.9	●	2288	38	28	10
C 04766 POD1		CUB	ED	NE	NE	SE	32	25S	28E	584716.5	3550306.9	●	2321	37	26	11
C 04766 POD3		CUB	ED	SW	NW	SW	33	25S	28E	585023.5	3550117.6	●	2588	43	37	6
C 03938 POD1		CUB	ED	NE	NE	NE	25	25S	27E	581481.8	3552616.2	●	3019	21	12	9
C 03836 POD1		C	ED	NE	NE	SE	29	25S	28E	584682.5	3551934.1	●	3109	300	30	270
C 01278		C	ED		SE	SW	28	25S	28E	585470.0	3551338.0 *	●	3398	205	90	115
C 04371 POD1		CUB	ED	SW	SW	SE	26	25S	27E	579368.8	3551272.6	●	3441	100	69	31
C 02474		CUB	ED		SE	SW	02	26S	27E	578964.0	3548029.0 *	●	3900	100		
C 01573 POD1		C	ED	SW	NW	SE	20	25S	28E	584143.9	3553361.5	●	3975	176	96	80

Average Depth to Water: **48 feet**

Minimum Depth: **12 feet**

Maximum Depth: **96 feet**

Record Count: 14

UTM Filters (in meters):

Easting: 582459.87

Northing: 3549760.00

Radius: 4000

* UTM location was derived from PLSS - see Help

The data is furnished by the NMOSE/ISC and is accepted by the recipient with the expressed understanding that the OSE/ISC make no warranties, expressed or implied, concerning the accuracy, completeness, reliability, usability, or suitability for any particular purpose of the data.



New Mexico Office of the State Engineer

Point of Diversion Summary

Well Tag	POD Number	(quarters are 1=NW 2=NE 3=SW 4=SE)				(NAD83 UTM in meters)			
		(quarters are smallest to largest)				X	Y		
		Q64	Q16	Q4	Sec	Twps	Rng		
C	03938 POD1	2	2	2	25	25S	27E	581482	3552616

Driller License:	1711	Driller Company:	STRAUB CORPORATION		
Driller Name:	EDWARD BRYAN				
Drill Start Date:	03/08/2016	Drill Finish Date:	03/08/2016	Plug Date:	
Log File Date:	03/22/2016	PCW Rev Date:		Source:	Shallow
Pump Type:		Pipe Discharge Size:		Estimated Yield:	
Casing Size:	2.00	Depth Well:	21 feet	Depth Water:	12 feet

Casing Perforations:	Top	Bottom
	6	21

The data is furnished by the NMOSE/ISC and is accepted by the recipient with the expressed understanding that the OSE/ISC make no warranties, expressed or implied, concerning the accuracy, completeness, reliability, usability, or suitability for any particular purpose of the data.

8/12/22 8:25 AM

POINT OF DIVERSION SUMMARY



New Mexico Office of the State Engineer

Point of Diversion Summary

Well Tag	POD Number	(quarters are 1=NW 2=NE 3=SW 4=SE)				(NAD83 UTM in meters)	
		(quarters are smallest to largest)				X	Y
		Q64	Q16	Q4	Sec	Tws	Rng
NA	C 04371 POD1	3	3	4	26	25S	27E
						579369	3551272

Driller License:	1456	Driller Company:	WHITE DRILLING COMPANY			
Driller Name:	WHITE, JOHNNOWN.GENER					
Drill Start Date:	10/17/2019	Drill Finish Date:	10/17/2019	Plug Date:	10/17/2019	
Log File Date:	11/04/2019	PCW Rev Date:		Source:	Shallow	
Pump Type:		Pipe Discharge Size:		Estimated Yield:		
Casing Size:		Depth Well:	100 feet	Depth Water:	69 feet	

Water Bearing Stratifications:	Top	Bottom	Description
	5	100	Other/Unknown

The data is furnished by the NMOSE/ISC and is accepted by the recipient with the expressed understanding that the OSE/ISC make no warranties, expressed or implied, concerning the accuracy, completeness, reliability, usability, or suitability for any particular purpose of the data.

8/12/22 8:27 AM

POINT OF DIVERSION SUMMARY



New Mexico Office of the State Engineer

Point of Diversion Summary

(quarters are 1=NW 2=NE 3=SW 4=SE)
 (quarters are smallest to largest) (NAD83 UTM in meters)

Well Tag	POD Number	Q64	Q16	Q4	Sec	Tw	Rng	X	Y
C	01573 POD1	3	1	4	20	25S	28E	584144	3553361

Driller License: 46	Driller Company: ABBOTT BROTHERS COMPANY	
Driller Name: MURRELL ABBOTT		
Drill Start Date: 01/15/1975	Drill Finish Date: 01/20/1975	Plug Date:
Log File Date: 01/23/1975	PCW Rev Date:	Source: Shallow
Pump Type:	Pipe Discharge Size:	Estimated Yield: 50 GPM
Casing Size: 7.00	Depth Well: 176 feet	Depth Water: 96 feet

Water Bearing Stratifications:	Top	Bottom	Description
	96	176	Sandstone/Gravel/Conglomerate

Casing Perforations:	Top	Bottom	
	156	176	

The data is furnished by the NMOSE/ISC and is accepted by the recipient with the expressed understanding that the OSE/ISC make no warranties, expressed or implied, concerning the accuracy, completeness, reliability, usability, or suitability for any particular purpose of the data.

8/12/22 8:27 AM

POINT OF DIVERSION SUMMARY



USGS Home
 Contact USGS
 Search USGS

National Water Information System: Web Interface

USGS Water Resources

Data Category: Groundwater Geographic Area: New Mexico GO

Click to hide News Bulletins

- Explore the NEW [USGS National Water Dashboard](#) interactive map to access real-time water data from over 13,500 stations nationwide.
- [Full News](#)

Groundwater levels for New Mexico

Click to hide state-specific text

Important: [Next Generation Monitoring Location Page](#)

Search Results -- 1 sites found

Agency code = usgs
 site_no list = 320557104061601

Minimum number of levels = 1
[Save file of selected sites](#) to local disk for future upload

USGS 320557104061601 25S.28E.29.41243

Eddy County, New Mexico
 Latitude 32°05'57", Longitude 104°06'16" NAD27
 Land-surface elevation 2,968 feet above NAVD88
 The depth of the well is 60 feet below land surface.
 This well is completed in the Other aquifers (N9999OTHER) national aquifer.
 This well is completed in the Alluvium, Bolson Deposits and Other Surface Deposits (110AVMB) local aquifer.

Output formats

Table of data
Tab-separated data
Graph of data
Reselect period

Date	Time	Water-level date-time accuracy	Parameter code	Water level, feet below land surface	Water level, feet above specific vertical datum	Referenced vertical datum	Status	Method of measurement	Measuring agency	Source measu
1948-12-06		D	62610		2951.52	NGVD29	1	Z		
1948-12-06		D	62611		2953.11	NAVD88	1	Z		
1948-12-06		D	72019	14.89			1	Z		

Explanation

Section	Code	Description
Water-level date-time accuracy	D	Date is accurate to the Day
Parameter code	62610	Groundwater level above NGVD 1929, feet
Parameter code	62611	Groundwater level above NAVD 1988, feet
Parameter code	72019	Depth to water level, feet below land surface
Referenced vertical datum	NAVD88	North American Vertical Datum of 1988
Referenced vertical datum	NGVD29	National Geodetic Vertical Datum of 1929
Status	1	Static

Section	Code	Description
Method of measurement	Z	Other.
Measuring agency		Not determined
Source of measurement		Not determined
Water-level approval status	A	Approved for publication -- Processing and review completed.

- [Questions about sites/data?](#)
- [Feedback on this web site](#)
- [Automated retrievals](#)
- [Help](#)
- [Data Tips](#)
- [Explanation of terms](#)
- [Subscribe for system changes](#)
- [News](#)

[Accessibility](#) [FOIA](#) [Privacy](#) [Policies and Notices](#)

[U.S. Department of the Interior](#) | [U.S. Geological Survey](#)

Title: Groundwater for New Mexico: Water Levels

URL: <https://nwis.waterdata.usgs.gov/nm/nwis/gwlevels?>



Page Contact Information: [New Mexico Water Data Maintainer](#)


Page Last Modified: 2022-08-12 10:40:59 EDT

0.29 0.24 nadww01

Date	Time	? Water-level date-time accuracy	? Parameter code	Water level, feet below land surface	Water level, feet above specific vertical datum	Referenced vertical datum
------	------	-------------------------------------	---------------------	--------------------------------------	---	---------------------------

Groundwater New Mexico GO

Click to hide News Bulletins

- Explore the [NEW USGS National Water Dashboard](#) interactive map to access real-time water data from over 13,500 stations nationwide.
- [Full News](#) 

Groundwater levels for New Mexico

Click to hide state-specific text

I Important: [Next Generation Monitoring Location Page](#)

Search Results -- 1 sites found

Agency code = usgs
site_no list =

- 320557104061501

Minimum number of levels = 1
[Save file of selected sites](#) to local disk for future upload

USGS 320557104061501 25S.28E.29.41243A

Eddy County, New Mexico
 Latitude 32°05'56.0", Longitude 104°06'22.6" NAD83
 Land-surface elevation 2,968.90 feet above NGVD29
 This well is completed in the Other aquifers (N9999OTHER) national aquifer.
 This well is completed in the Alluvium, Bolson Deposits and Other Surface Deposits (110AVMB) local aquifer.

Output formats

Table of data
Tab-separated data
Graph of data
Reselect period

Date	Time	? Water-level date-time accuracy	? Parameter code	Water level, feet below land surface	Water level, feet above specific vertical datum	Referenced vertical datum	? Status	? Method of measurement	? Measuring agency	? Source measu
1978-01-12			D	62610	2948.65	NGVD29	P		Z	
1978-01-12			D	62611	2950.24	NAVD88	P		Z	
1978-01-12			D	72019	20.25		P		Z	
1983-02-01			D	62610	2955.90	NGVD29	1		Z	
1983-02-01			D	62611	2957.49	NAVD88	1		Z	
1983-02-01			D	72019	13.00		1		Z	
1987-10-13			D	62610	2957.11	NGVD29	1		Z	
1987-10-13			D	62611	2958.70	NAVD88	1		Z	
1987-10-13			D	72019	11.79		1		Z	
1992-11-04			D	62610	2953.67	NGVD29	P		S	
1992-11-04			D	62611	2955.26	NAVD88	P		S	
1992-11-04			D	72019	15.23		P		S	
1998-01-23			D	62610	2953.60	NGVD29	1		S	
1998-01-23			D	62611	2955.19	NAVD88	1		S	
1998-01-23			D	72019	15.30		1		S	

Date	Time	Water-level date-time accuracy	Parameter code	Water level, feet below land surface	Water level, feet above specific vertical datum	Referenced vertical datum	
2003-01-28		D	62610	2948.57	NGVD29	1	S USGS
2003-01-28		D	62611	2950.16	NAVD88	1	S USGS
2003-01-28		D	72019	20.33		1	S USGS
2013-01-10	20:20 UTC	m	62610		NGVD29	0	S USGS
2013-01-10	20:20 UTC	m	62611		NAVD88	0	S USGS
2013-01-10	20:20 UTC	m	72019			0	S USGS

Explanation

Section	Code	Description
Water-level date-time accuracy	D	Date is accurate to the Day
Water-level date-time accuracy	m	Date is accurate to the Minute
Parameter code	62610	Groundwater level above NGVD 1929, feet
Parameter code	62611	Groundwater level above NAVD 1988, feet
Parameter code	72019	Depth to water level, feet below land surface
Referenced vertical datum	NAVD88	North American Vertical Datum of 1988
Referenced vertical datum	NGVD29	National Geodetic Vertical Datum of 1929
Status	1	Static
Status	O	Obstructed
Status	P	Pumping
Method of measurement	S	Steel-tape measurement.
Method of measurement	Z	Other.
Measuring agency		Not determined
Measuring agency	USGS	U.S. Geological Survey
Source of measurement		Not determined
Source of measurement	S	Measured by personnel of reporting agency.
Water-level approval status	A	Approved for publication -- Processing and review completed.

- [Questions about sites/data?](#)
- [Feedback on this web site](#)
- [Automated retrievals](#)
- [Help](#)
- [Data Tips](#)
- [Explanation of terms](#)
- [Subscribe for system changes](#)
- [News](#)

Accessibility FOIA Privacy Policies and Notices

U.S. Department of the Interior | U.S. Geological Survey

Title: Groundwater for New Mexico: Water Levels

URL: <https://nwis.waterdata.usgs.gov/nm/nwis/gwlevels?>

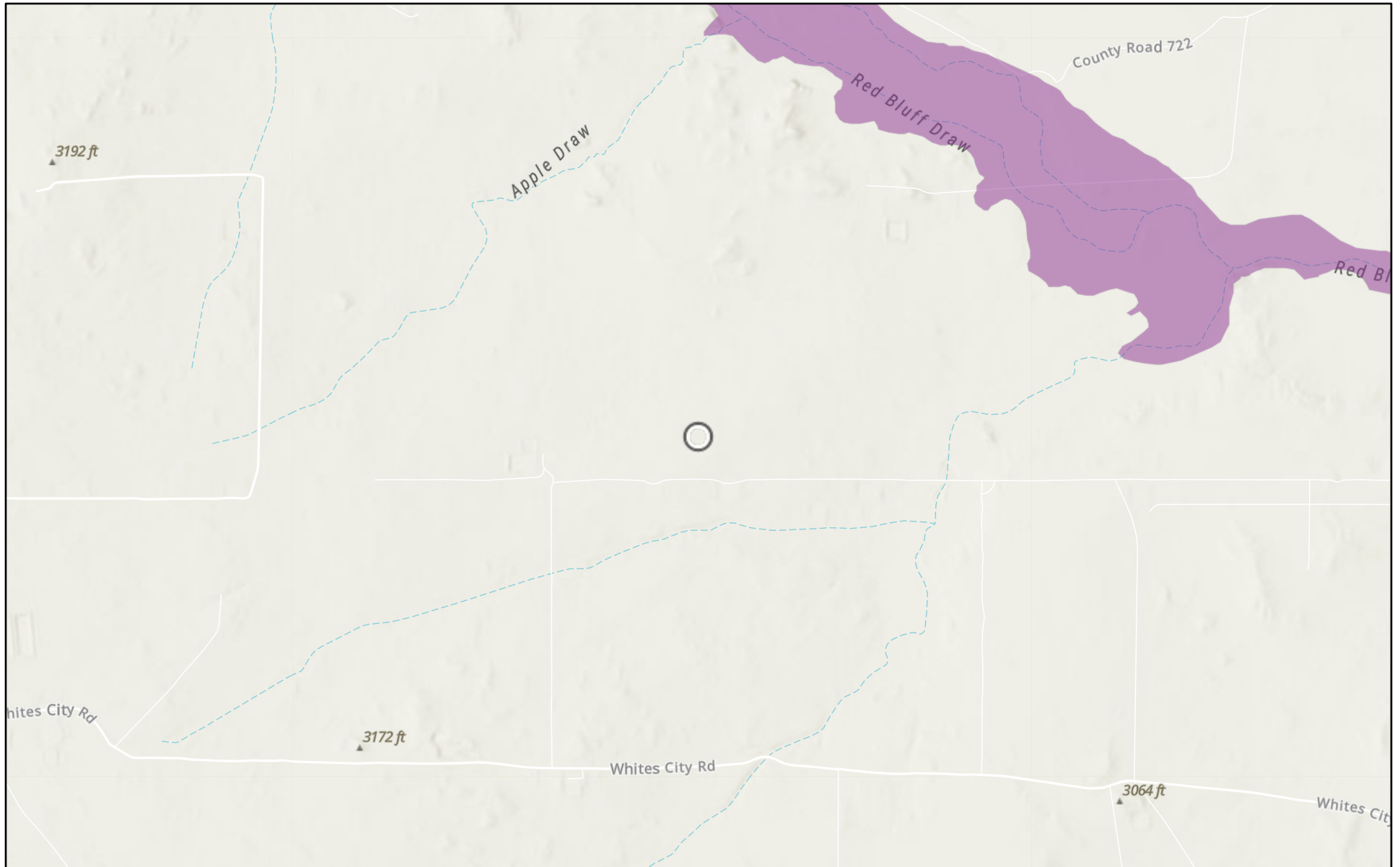


Page Contact Information: [New Mexico Water Data Maintainer](#)

Page Last Modified: 2022-08-12 10:39:14 EDT

0.28 0.24 nadww02

Myox 31 State Com 501H

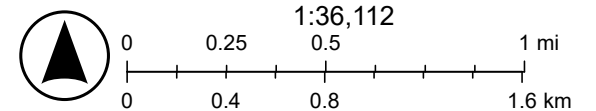


1/29/2026

USA Flood Hazard Areas

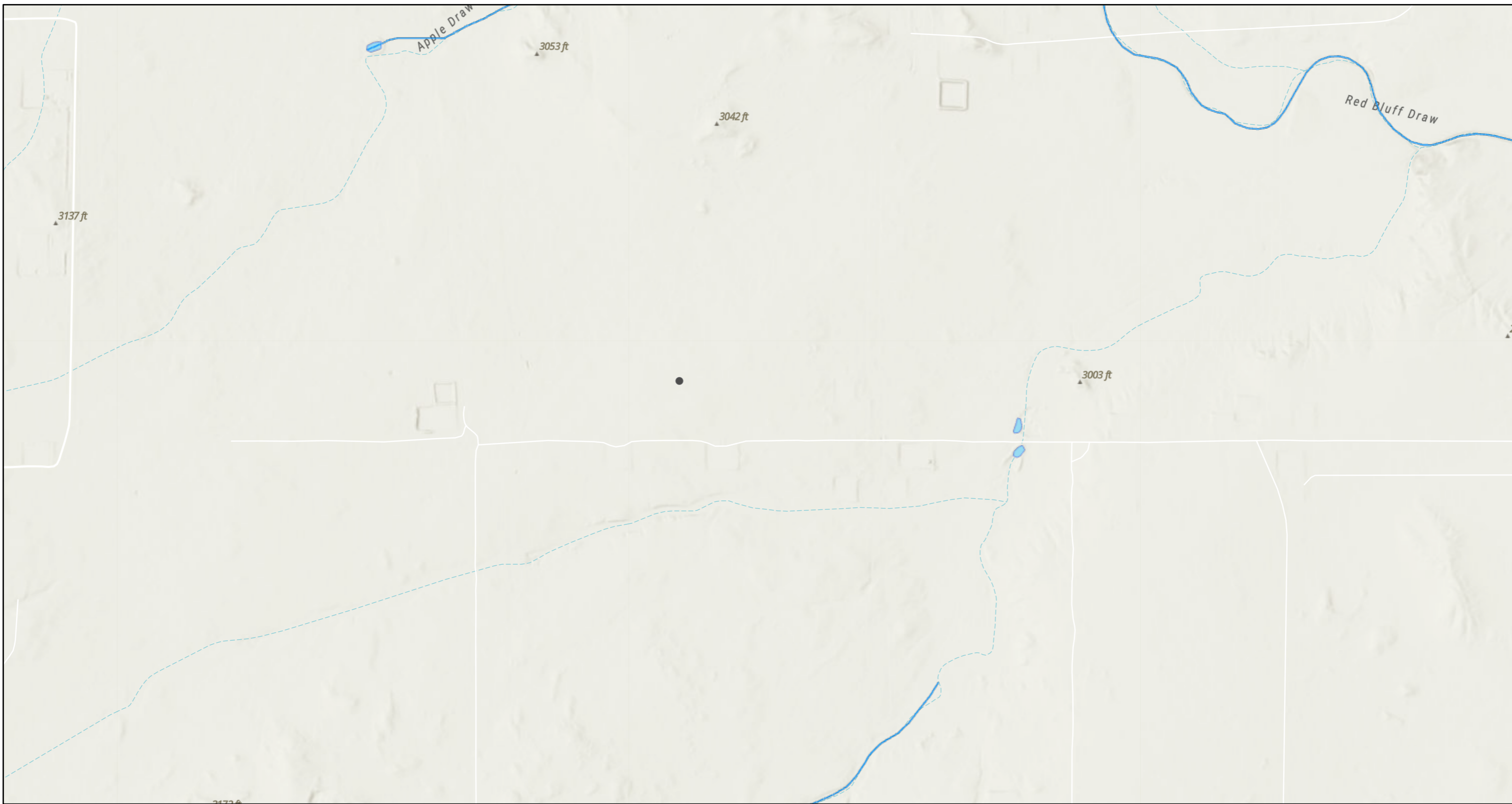
 1% Annual Chance Flood Hazard

World_Hillshade



Esri, NASA, NGA, USGS, FEMA, Sources: Esri, TomTom, Garmin, FAO, NOAA, USGS, (c) OpenStreetMap contributors, and the GIS User

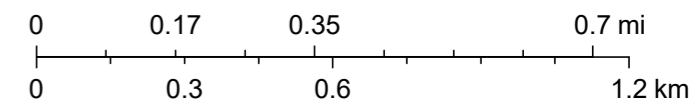
Myox 31 State Com 501H



1/29/2026, 2:11:34 PM

- OSW Water Bodys
- OSE Streams

1:18,056

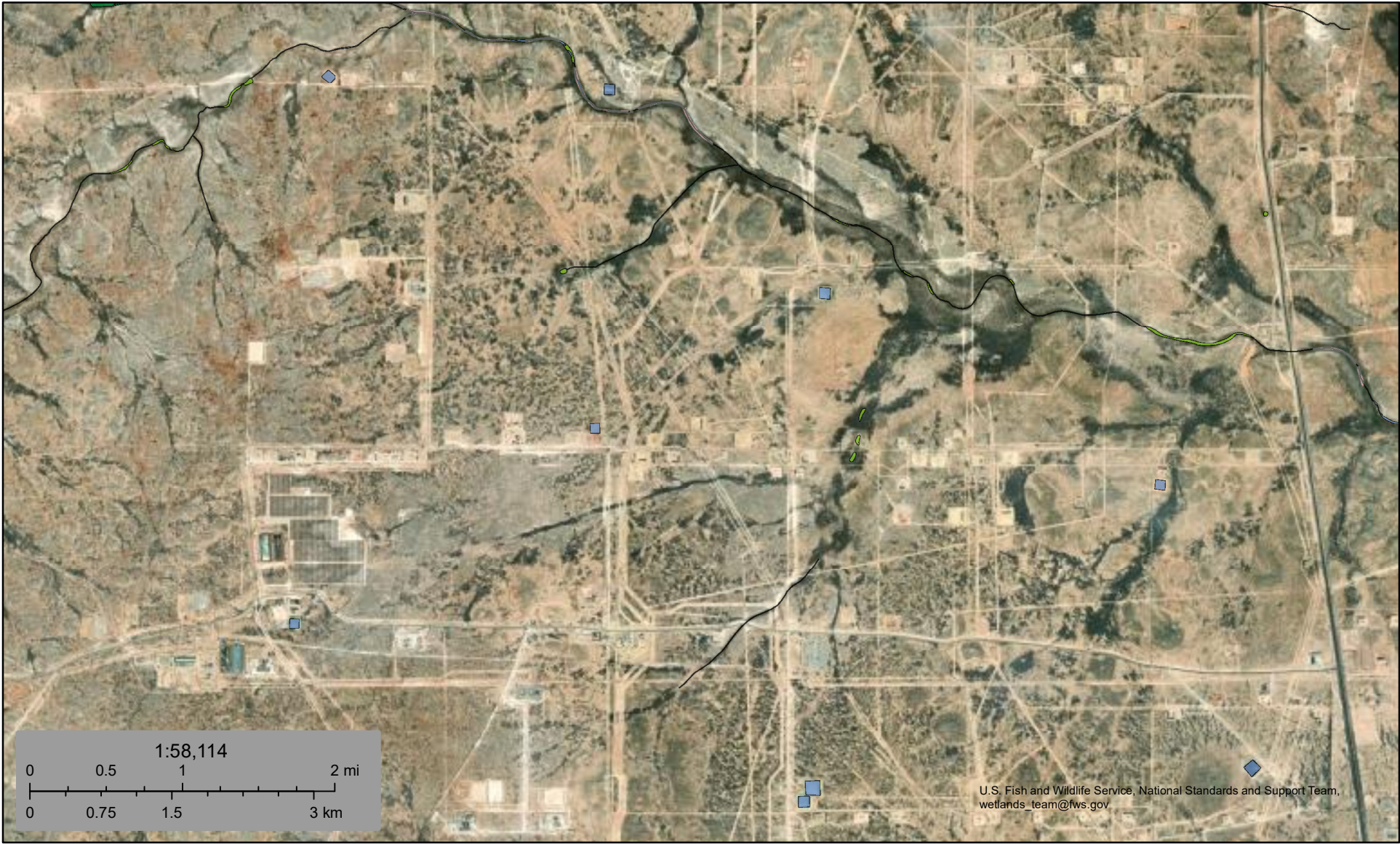


Esri, NASA, NGA, USGS, FEMA, Sources: Esri, TomTom, Garmin, FAO, NOAA, USGS, © OpenStreetMap contributors, and the GIS User Community, NM OSE





U.S. Fish and Wildlife Service
National Wetlands Inventory




Myox 31 State Com 501H






January 29, 2026

Wetlands

-  Estuarine and Marine Deepwater
-  Estuarine and Marine Wetland

-  Freshwater Emergent Wetland
-  Freshwater Forested/Shrub Wetland
-  Freshwater Pond

-  Lake
-  Other
-  Riverine

This map is for general reference only. The US Fish and Wildlife Service is not responsible for the accuracy or currentness of the base data shown on this map. All wetlands related data should be used in accordance with the layer metadata found on the Wetlands Mapper web site.

Sante Fe Main Office
Phone: (505) 476-3441

General Information
Phone: (505) 629-6116

Online Phone Directory
<https://www.emnrd.nm.gov/ocd/contact-us>

State of New Mexico
Energy, Minerals and Natural Resources
Oil Conservation Division
1220 S. St Francis Dr.
Santa Fe, NM 87505

QUESTIONS

Action 548670

QUESTIONS

Operator: COG OPERATING LLC 600 W Illinois Ave Midland, TX 79701	OGRID: 229137
	Action Number: 548670
	Action Type: [C-141] Remediation Closure Request C-141 (C-141-v-Closure)

QUESTIONS

Prerequisites	
Incident ID (n#)	nAPP2426831113
Incident Name	NAPP2426831113 MYOX 31 STATE COM 501H @ FAPP2131529102
Incident Type	Produced Water Release
Incident Status	Remediation Closure Report Received
Incident Facility	[fAPP2131529102] Myox 31 O St Com BTTY

Location of Release Source	
<i>Please answer all the questions in this group.</i>	
Site Name	Myox 31 State Com 501H
Date Release Discovered	08/04/2024
Surface Owner	State

Incident Details	
<i>Please answer all the questions in this group.</i>	
Incident Type	Produced Water Release
Did this release result in a fire or is the result of a fire	No
Did this release result in any injuries	No
Has this release reached or does it have a reasonable probability of reaching a watercourse	No
Has this release endangered or does it have a reasonable probability of endangering public health	No
Has this release substantially damaged or will it substantially damage property or the environment	No
Is this release of a volume that is or may with reasonable probability be detrimental to fresh water	No

Nature and Volume of Release	
<i>Material(s) released, please answer all that apply below. Any calculations or specific justifications for the volumes provided should be attached to the follow-up C-141 submission.</i>	
Crude Oil Released (bbls) Details	Not answered.
Produced Water Released (bbls) Details	Cause: Equipment Failure Pump Produced Water Released: 7 BBL Recovered: 7 BBL Lost: 0 BBL.
Is the concentration of chloride in the produced water >10,000 mg/l	Yes
Condensate Released (bbls) Details	Not answered.
Natural Gas Vented (Mcf) Details	Not answered.
Natural Gas Flared (Mcf) Details	Not answered.
Other Released Details	Not answered.
Are there additional details for the questions above (i.e. any answer containing Other, Specify, Unknown, and/or Fire, or any negative lost amounts)	Not answered.

Sante Fe Main Office
Phone: (505) 476-3441

General Information
Phone: (505) 629-6116

Online Phone Directory
<https://www.emnrd.nm.gov/ocd/contact-us>

State of New Mexico
Energy, Minerals and Natural Resources
Oil Conservation Division
1220 S. St Francis Dr.
Santa Fe, NM 87505

QUESTIONS, Page 2

Action 548670

QUESTIONS (continued)

Operator: COG OPERATING LLC 600 W Illinois Ave Midland, TX 79701	OGRID: 229137
	Action Number: 548670
	Action Type: [C-141] Remediation Closure Request C-141 (C-141-v-Closure)

QUESTIONS

Nature and Volume of Release (continued)	
Is this a gas only submission (i.e. only significant Mcf values reported)	No, according to supplied volumes this does not appear to be a "gas only" report.
Was this a major release as defined by Subsection A of 19.15.29.7 NMAC	No
Reasons why this would be considered a submission for a notification of a major release	<i>Unavailable.</i>

With the implementation of the 19.15.27 NMAC (05/25/2021), venting and/or flaring of natural gas (i.e. gas only) are to be submitted on the C-129 form.

Initial Response

The responsible party must undertake the following actions immediately unless they could create a safety hazard that would result in injury.

The source of the release has been stopped	True
The impacted area has been secured to protect human health and the environment	True
Released materials have been contained via the use of berms or dikes, absorbent pads, or other containment devices	True
All free liquids and recoverable materials have been removed and managed appropriately	True
If all the actions described above have not been undertaken, explain why	<i>Not answered.</i>

Per Paragraph (4) of Subsection B of 19.15.29.8 NMAC the responsible party may commence remediation immediately after discovery of a release. If remediation has begun, please prepare and attach a narrative of actions to date in the follow-up C-141 submission. If remedial efforts have been successfully completed or if the release occurred within a lined containment area (see Subparagraph (a) of Paragraph (5) of Subsection A of 19.15.29.11 NMAC), please prepare and attach all information needed for closure evaluation in the follow-up C-141 submission.

I hereby certify that the information given above is true and complete to the best of my knowledge and understand that pursuant to OCD rules and regulations all operators are required to report and/or file certain release notifications and perform corrective actions for releases which may endanger public health or the environment. The acceptance of a C-141 report by the OCD does not relieve the operator of liability should their operations have failed to adequately investigate and remediate contamination that pose a threat to groundwater, surface water, human health or the environment. In addition, OCD acceptance of a C-141 report does not relieve the operator of responsibility for compliance with any other federal, state, or local laws and/or regulations.

I hereby agree and sign off to the above statement	Name: Jacqui Harris Title: Sr Environment Engineer Email: jacqui.harris@conocophillips.com Date: 01/30/2026
--	--

Sante Fe Main Office
Phone: (505) 476-3441

General Information
Phone: (505) 629-6116

Online Phone Directory
<https://www.emnrd.nm.gov/ocd/contact-us>

State of New Mexico
Energy, Minerals and Natural Resources
Oil Conservation Division
1220 S. St Francis Dr.
Santa Fe, NM 87505

QUESTIONS, Page 3

Action 548670

QUESTIONS (continued)

Operator: COG OPERATING LLC 600 W Illinois Ave Midland, TX 79701	OGRID: 229137
	Action Number: 548670
	Action Type: [C-141] Remediation Closure Request C-141 (C-141-v-Closure)

QUESTIONS

Site Characterization

Please answer all the questions in this group (only required when seeking remediation plan approval and beyond). This information must be provided to the appropriate district office no later than 90 days after the release discovery date.

What is the shallowest depth to groundwater beneath the area affected by the release in feet below ground surface (ft bgs)	Less than or equal 25 (ft.)
What method was used to determine the depth to ground water	U.S. Geological Survey
Did this release impact groundwater or surface water	No
What is the minimum distance, between the closest lateral extents of the release and the following surface areas:	
A continuously flowing watercourse or any other significant watercourse	Between 1000 (ft.) and ½ (mi.)
Any lakebed, sinkhole, or playa lake (measured from the ordinary high-water mark)	Between 1000 (ft.) and ½ (mi.)
An occupied permanent residence, school, hospital, institution, or church	Greater than 5 (mi.)
A spring or a private domestic fresh water well used by less than five households for domestic or stock watering purposes	Greater than 5 (mi.)
Any other fresh water well or spring	Between 1000 (ft.) and ½ (mi.)
Incorporated municipal boundaries or a defined municipal fresh water well field	Greater than 5 (mi.)
A wetland	Between 1000 (ft.) and ½ (mi.)
A subsurface mine	Greater than 5 (mi.)
An (non-karst) unstable area	Zero feet, overlying, or within area
Categorize the risk of this well / site being in a karst geology	High
A 100-year floodplain	Between 1000 (ft.) and ½ (mi.)
Did the release impact areas not on an exploration, development, production, or storage site	No

Remediation Plan

Please answer all the questions that apply or are indicated. This information must be provided to the appropriate district office no later than 90 days after the release discovery date.

Requesting a remediation plan approval with this submission	Yes
<i>Attach a comprehensive report demonstrating the lateral and vertical extents of soil contamination associated with the release have been determined, pursuant to 19.15.29.11 NMAC and 19.15.29.13 NMAC.</i>	
Have the lateral and vertical extents of contamination been fully delineated	Yes
Was this release entirely contained within a lined containment area	Yes
<i>Per Subsection B of 19.15.29.11 NMAC unless the site characterization report includes completed efforts at remediation, the report must include a proposed remediation plan in accordance with 19.15.29.12 NMAC, which includes the anticipated timelines for beginning and completing the remediation.</i>	
On what estimated date will the remediation commence	01/28/2026
On what date will (or did) the final sampling or liner inspection occur	01/29/2026
On what date will (or was) the remediation complete(d)	01/29/2026
What is the estimated surface area (in square feet) that will be remediated	0
What is the estimated volume (in cubic yards) that will be remediated	0

These estimated dates and measurements are recognized to be the best guess or calculation at the time of submission and may (be) change(d) over time as more remediation efforts are completed. The OCD recognizes that proposed remediation measures may have to be minimally adjusted in accordance with the physical realities encountered during remediation. If the responsible party has any need to significantly deviate from the remediation plan proposed, then it should consult with the division to determine if another remediation plan submission is required.

Sante Fe Main Office
Phone: (505) 476-3441

General Information
Phone: (505) 629-6116

Online Phone Directory
<https://www.emnrd.nm.gov/ocd/contact-us>

State of New Mexico
Energy, Minerals and Natural Resources
Oil Conservation Division
1220 S. St Francis Dr.
Santa Fe, NM 87505

QUESTIONS, Page 4

Action 548670

QUESTIONS (continued)

Operator: COG OPERATING LLC 600 W Illinois Ave Midland, TX 79701	OGRID: 229137
	Action Number: 548670
	Action Type: [C-141] Remediation Closure Request C-141 (C-141-v-Closure)

QUESTIONS

Remediation Plan (continued)	
<i>Please answer all the questions that apply or are indicated. This information must be provided to the appropriate district office no later than 90 days after the release discovery date.</i>	
This remediation will (or is expected to) utilize the following processes to remediate / reduce contaminants:	
<i>(Select all answers below that apply.)</i>	
Is (or was) there affected material present needing to be removed	Yes
Is (or was) there a power wash of the lined containment area (to be) performed	Yes
OTHER (Non-listed remedial process)	No
<i>Per Subsection B of 19.15.29.11 NMAC unless the site characterization report includes completed efforts at remediation, the report must include a proposed remediation plan in accordance with 19.15.29.12 NMAC, which includes the anticipated timelines for beginning and completing the remediation.</i>	
I hereby certify that the information given above is true and complete to the best of my knowledge and understand that pursuant to OCD rules and regulations all operators are required to report and/or file certain release notifications and perform corrective actions for releases which may endanger public health or the environment. The acceptance of a C-141 report by the OCD does not relieve the operator of liability should their operations have failed to adequately investigate and remediate contamination that pose a threat to groundwater, surface water, human health or the environment. In addition, OCD acceptance of a C-141 report does not relieve the operator of responsibility for compliance with any other federal, state, or local laws and/or regulations.	
I hereby agree and sign off to the above statement	Name: Jacqui Harris Title: Sr Environment Engineer Email: jacqui.harris@conocophillips.com Date: 01/30/2026
<i>The OCD recognizes that proposed remediation measures may have to be minimally adjusted in accordance with the physical realities encountered during remediation. If the responsible party has any need to significantly deviate from the remediation plan proposed, then it should consult with the division to determine if another remediation plan submission is required.</i>	

Sante Fe Main Office
Phone: (505) 476-3441

General Information
Phone: (505) 629-6116

Online Phone Directory
<https://www.emnrd.nm.gov/ocd/contact-us>

State of New Mexico
Energy, Minerals and Natural Resources
Oil Conservation Division
1220 S. St Francis Dr.
Santa Fe, NM 87505

QUESTIONS, Page 6

Action 548670

QUESTIONS (continued)

Operator: COG OPERATING LLC 600 W Illinois Ave Midland, TX 79701	OGRID: 229137
	Action Number: 548670
	Action Type: [C-141] Remediation Closure Request C-141 (C-141-v-Closure)

QUESTIONS

Liner Inspection Information	
Last liner inspection notification (C-141L) recorded	546277
Liner inspection date pursuant to Subparagraph (a) of Paragraph (5) of Subsection A of 19.15.29.11 NMAC	01/29/2026
Was all the impacted materials removed from the liner	Yes
What was the liner inspection surface area in square feet	1500

Remediation Closure Request	
<i>Only answer the questions in this group if seeking remediation closure for this release because all remediation steps have been completed.</i>	
Requesting a remediation closure approval with this submission	Yes
Have the lateral and vertical extents of contamination been fully delineated	Yes
Was this release entirely contained within a lined containment area	Yes
What was the total surface area (in square feet) remediated	0
What was the total volume (cubic yards) remediated	0
Summarize any additional remediation activities not included by answers (above)	n/a

The responsible party must attach information demonstrating they have complied with all applicable closure requirements and any conditions or directives of the OCD. This demonstration should be in the form of a comprehensive report (in .pdf format) including a scaled site map, sampling diagrams, relevant field notes, photographs of any excavation prior to backfilling, laboratory data including chain of custody documents of final sampling, and a narrative of the remedial activities. Refer to 19.15.29.12 NMAC.

I hereby certify that the information given above is true and complete to the best of my knowledge and understand that pursuant to OCD rules and regulations all operators are required to report and/or file certain release notifications and perform corrective actions for releases which may endanger public health or the environment. The acceptance of a C-141 report by the OCD does not relieve the operator of liability should their operations have failed to adequately investigate and remediate contamination that pose a threat to groundwater, surface water, human health or the environment. In addition, OCD acceptance of a C-141 report does not relieve the operator of responsibility for compliance with any other federal, state, or local laws and/or regulations. The responsible party acknowledges they must substantially restore, reclaim, and re-vegetate the impacted surface area to the conditions that existed prior to the release or their final land use in accordance with 19.15.29.13 NMAC including notification to the OCD when reclamation and re-vegetation are complete.

I hereby agree and sign off to the above statement	Name: Jacqui Harris Title: Sr Environment Engineer Email: jacqui.harris@conocophillips.com Date: 01/30/2026
--	--

Sante Fe Main Office
Phone: (505) 476-3441

General Information
Phone: (505) 629-6116

Online Phone Directory
<https://www.emnrd.nm.gov/ocd/contact-us>

State of New Mexico
Energy, Minerals and Natural Resources
Oil Conservation Division
1220 S. St Francis Dr.
Santa Fe, NM 87505

CONDITIONS

Action 548670

CONDITIONS

Operator: COG OPERATING LLC 600 W Illinois Ave Midland, TX 79701	OGRID: 229137
	Action Number: 548670
	Action Type: [C-141] Remediation Closure Request C-141 (C-141-v-Closure)

CONDITIONS

Created By	Condition	Condition Date
rhamlet	We have received your Remediation Closure Report for Incident #nAPP2426831113 Myox 31 State Com 501H, thank you. This Remediation Closure Report is approved.	2/2/2026