



SITE INFORMATION

Closure Report
Pardue C5 CTB (02.09.2026)
Incident ID: nAPP2604155699
Eddy County, New Mexico
Unit L, S11, T23S, R28E
32.31728°, -104.065745°

Produced Water Release
Point of Release: Equipment Failure from Water Tank
Release Date: 02.09.2026
Volume Released: 360 Barrels of Produced Water
Volume Recovered: 360 Barrels of Produced Water

CARMONA RESOURCES



Prepared for:
BTA Oil Producers, LLC
104 S Pecos St.
Midland, Texas 79701

Prepared by:
Carmona Resources, LLC
310 West Wall Street
Suite 500
Midland, Texas 79701

TABLE OF CONTENTS

1.0 SITE INFORMATION AND BACKGROUND

2.0 SITE CHARACTERIZATION AND GROUNDWATER

3.0 NMAC REGULATORY CRITERIA

4.0 LINER INSPECTION ACTIVITIES

5.0 CONCLUSIONS

FIGURES

FIGURE 1	OVERVIEW	FIGURE 2	TOPOGRAPHIC
FIGURE 3	CONTAINMENT		

APPENDICES

APPENDIX A	PHOTOS
APPENDIX B	NMOCD CORRESPONDENCE
APPENDIX C	SITE CHARACTERIZATION AND GROUNDWATER



February 20, 2026

Mike Bratcher
District Supervisor
Oil Conservation Division, District 1
811 S. First Street
Artesia, New Mexico 88210

Re: **Closure Report**
Pardue C5 CTB (02.09.2026)
Incident ID: nAPP2604155699
BTA Oil Producers, LLC
Site Location: Unit L, S11, T23S, R28E
32.31728°, -104.065745°
Eddy County, New Mexico

Mr. Bratcher:

At the request of BTA Oil Producers, LLC (BTA) Carmona Resources LLC, has prepared this letter to document the liner inspection activities conducted at the Pardue C5 CTB (02.09.2026) (Site) located at 32.31728°, -104.065745° in Eddy County, New Mexico (Figures 1 and 2).

1.0 Site Information and Background

Based on the initial C-141 obtained from the New Mexico Oil Conservation Division (NMOCD), the release was discovered on February 9, 2026, due to equipment failure from the water tank within the lined containment. It resulted in approximately three hundred and sixty (360) barrels of produced water with three hundred and sixty (360) barrels of produced water being immediately recovered. The containment area is approximately 6,500 sq ft. The facility containment boundaries are shown in Figure 3. The Notification of Release (N.O.R) is attached in Appendix B.

2.0 Site Characterization and Groundwater

The site is located within a medium karst. Based on a review of the New Mexico Office of the State Engineer and U.S. Geological Survey (USGS) databases, two (2) water sources are identified within a 0.50-mile radius of the site. The nearest identified well is located approximately 0.03 miles Northeast of the site in Section 11, Township 23 South, Range 28 East (S11 T23S R28E). The well was drilled in 1952 and has a reported depth to groundwater of approximately 45 feet below ground surface (ft bgs). A copy of the associated summary report is included in Appendix C.

3.0 NMAC Regulatory Criteria

Per the NMOCD regulatory criteria established in 19.15.29.12 NMAC, the following criteria were utilized in assessing and remediating the site.

- Benzene: 10 milligrams per kilogram (mg/kg).
- Benzene, toluene, ethylbenzene, and total xylenes (BTEX): 50 mg/kg.
- TPH: 100 mg/kg (GRO + DRO + MRO).
- Chloride: 600 mg/kg.



4.0 Liner Inspection Activities

Before conducting the liner inspection, BTA contractors removed all freestanding fluids from the affected containment area and thoroughly washed the plastic liner. The NMOCD division office was notified via NMOCD portal on February 17, 2026, per Subsection D of 19.15.29.12 NMAC. See Appendix B for the NMOCD correspondence prior to performing the liner inspection. On February 20, 2026, Carmona Resources personnel conducted liner inspection activities to assess the integrity of the affected liner within the facility's tank battery containment. Refer to the Photolog for confirmation that liner inspection activities took place. See Appendix B for the Liner Integrity Certification concluding that there were no integrity issues.

5.0 Conclusions

Based on the results of the liner integrity inspection, no further actions are required at the site. BTA formally requests the closure of the spill. If you have any questions regarding this report or need additional information, please contact us at 432-813-8988.

Sincerely,
Carmona Resources, LLC

Ashton Thielke
Environmental Manager

Riley Plogger
Project Manager

FIGURES

CARMONA RESOURCES

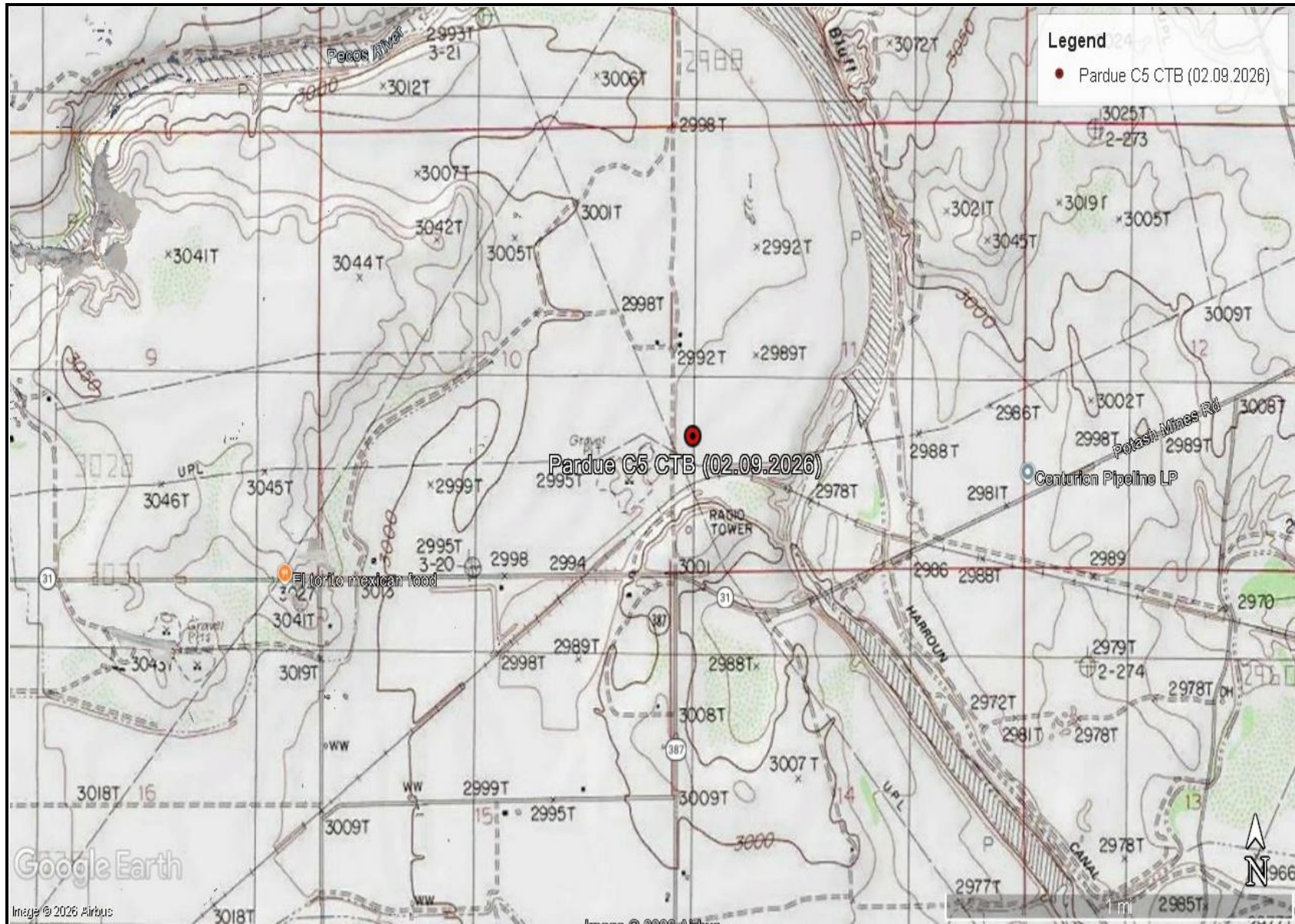





OVERVIEW MAP
BTA OIL PRODUCERS, LLC
PARDUE C5 CTB (02.09.2026)
EDDY COUNTY, NEW MEXICO
32.31728°, -104.065745°




FIGURE 1



<p>TOPOGRAPHIC MAP BTA OIL PRODUCERS, LLC PARDUE C5 CTB (02.09.2026) EDDY COUNTY, NEW MEXICO 32.31728°, -104.065745°</p>	<p>CARMONA RESOURCES </p>	<p>FIGURE 2</p>
--	--	-----------------



<p>CONTAINMENT MAP BTA OIL PRODUCERS, LLC PARDUE C5 CTB (02.09.2026) EDDY COUNTY, NEW MEXICO 32.31728°, -104.065745°</p>	<p>CARMONA RESOURCES </p>	<p>FIGURE 3</p>
--	--	-----------------

APPENDIX A

CARMONA RESOURCES



PHOTOGRAPHIC LOG

BTA Oil Producers, LLC

Photograph No. 1

Facility: Pardue C5 CTB (02.09.2026)

County: Eddy County, New Mexico

Description:
View North of the facility sign.



Photograph No. 2

Facility: Pardue C5 CTB (02.09.2026)

County: Eddy County, New Mexico

Description:
View North of the exposed liner. The red outline is the area of the linear inspection.

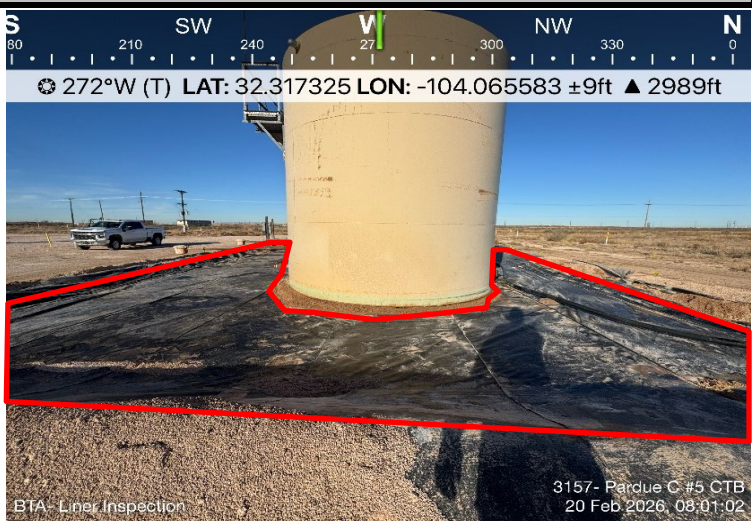


Photograph No. 3

Facility: Pardue C5 CTB (02.09.2026)

County: Eddy County, New Mexico

Description:
View West of the exposed liner. The red outline is the area of the linear inspection.



PHOTOGRAPHIC LOG

BTA Oil Producers, LLC

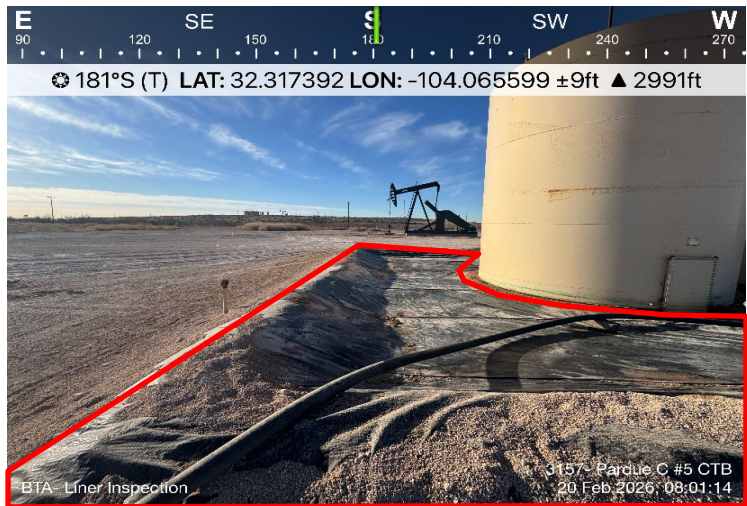
Photograph No. 4

Facility: Pardue C5 CTB (02.09.2026)

County: Eddy County, New Mexico

Description:

View South of the exposed liner. The red outline is the area of the linear inspection.



Photograph No. 5

Facility: Pardue C5 CTB (02.09.2026)

County: Eddy County, New Mexico

Description:

View South of the exposed liner. The red outline is the area of the linear inspection.



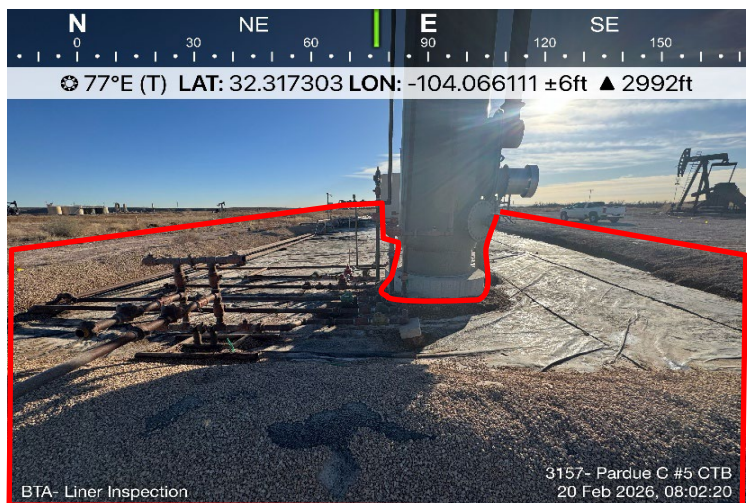
Photograph No. 6

Facility: Pardue C5 CTB (02.09.2026)

County: Eddy County, New Mexico

Description:

View East of the exposed liner. The red outline is the area of the linear inspection.



PHOTOGRAPHIC LOG

BTA Oil Producers, LLC

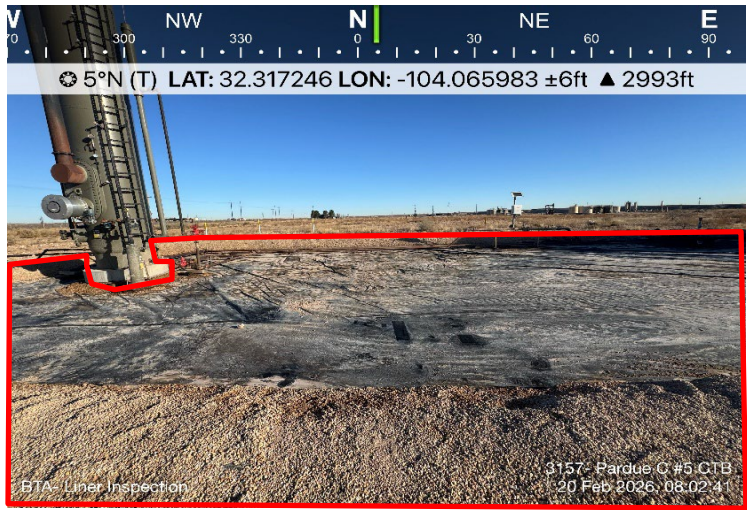
Photograph No. 7

Facility: Pardue C5 CTB (02.09.2026)

County: Eddy County, New Mexico

Description:

View North of the exposed liner. The red outline is the area of the linear inspection.



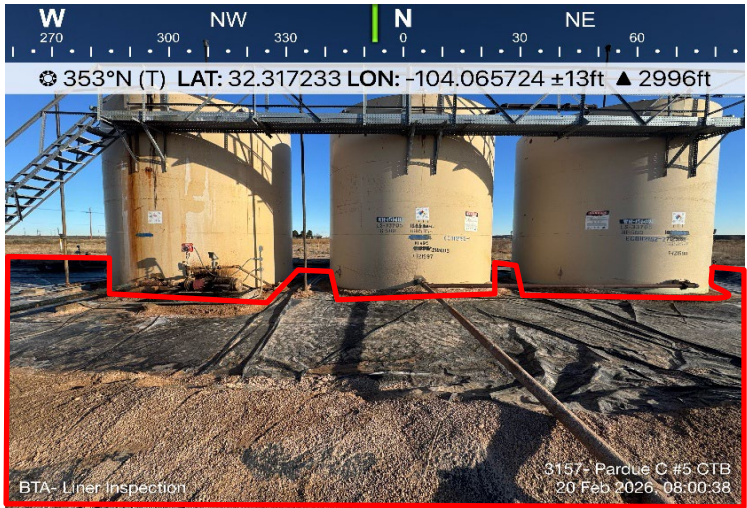
Photograph No. 8

Facility: Pardue C5 CTB (02.09.2026)

County: Eddy County, New Mexico

Description:

View North of the exposed liner. The red outline is the area of the linear inspection.



APPENDIX B

CARMONA RESOURCES



Sante Fe Main Office
Phone: (505) 476-3441

General Information
Phone: (505) 629-6116

Online Phone Directory
<https://www.emnrd.nm.gov/ocd/contact-us>

State of New Mexico
Energy, Minerals and Natural Resources
Oil Conservation Division
1220 S. St Francis Dr.
Santa Fe, NM 87505

QUESTIONS

Action 552551

QUESTIONS

Operator: BTA OIL PRODUCERS, LLC 104 S Pecos Midland, TX 79701	OGRID: 260297
	Action Number: 552551
	Action Type: [NOTIFY] Notification Of Release (NOR)

QUESTIONS

Location of Release Source	
<i>Please answer all the questions in this group.</i>	
Site Name	Pardue C5 CTB
Date Release Discovered	02/09/2026
Surface Owner	Private

Incident Details	
<i>Please answer all the questions in this group.</i>	
Incident Type	Produced Water Release
Did this release result in a fire or is the result of a fire	No
Did this release result in any injuries	No
Has this release reached or does it have a reasonable probability of reaching a watercourse	No
Has this release endangered or does it have a reasonable probability of endangering public health	No
Has this release substantially damaged or will it substantially damage property or the environment	No
Is this release of a volume that is or may with reasonable probability be detrimental to fresh water	No

Nature and Volume of Release	
<i>Material(s) released, please answer all that apply below. Any calculations or specific justifications for the volumes provided should be attached to the follow-up C-141 submission.</i>	
Crude Oil Released (bbls) Details	Not answered.
Produced Water Released (bbls) Details	Cause: Equipment Failure Water Tank Produced Water Released: 360 BBL Recovered: 360 BBL Lost: 0 BBL.
Is the concentration of chloride in the produced water >10,000 mg/l	Yes
Condensate Released (bbls) Details	Not answered.
Natural Gas Vented (Mcf) Details	Not answered.
Natural Gas Flared (Mcf) Details	Not answered.
Other Released Details	Not answered.
Are there additional details for the questions above (i.e. any answer containing Other, Specify, Unknown, and/or Fire, or any negative lost amounts)	Not answered.

Sante Fe Main Office
Phone: (505) 476-3441

General Information
Phone: (505) 629-6116

Online Phone Directory
<https://www.emnrd.nm.gov/ocd/contact-us>

**State of New Mexico
Energy, Minerals and Natural Resources
Oil Conservation Division
1220 S. St Francis Dr.
Santa Fe, NM 87505**

QUESTIONS, Page 2

Action 552551

QUESTIONS (continued)

Operator: BTA OIL PRODUCERS, LLC 104 S Pecos Midland, TX 79701	OGRID: 260297
	Action Number: 552551
	Action Type: [NOTIFY] Notification Of Release (NOR)

QUESTIONS

Nature and Volume of Release (continued)	
Is this a gas only submission (i.e. only significant Mcf values reported)	No, according to supplied volumes this does not appear to be a "gas only" report.
Was this a major release as defined by Subsection A of 19.15.29.7 NMAC	Yes
Reasons why this would be considered a submission for a notification of a major release	From paragraph A. "Major release" determine using: (1) an unauthorized release of a volume, excluding gases, of 25 barrels or more.
<i>With the implementation of the 19.15.27 NMAC (05/25/2021), venting and/or flaring of natural gas (i.e. gas only) are to be submitted on the C-129 form.</i>	

Initial Response

The responsible party must undertake the following actions immediately unless they could create a safety hazard that would result in injury.

The source of the release has been stopped	True
The impacted area has been secured to protect human health and the environment	True
Released materials have been contained via the use of berms or dikes, absorbent pads, or other containment devices	True
All free liquids and recoverable materials have been removed and managed appropriately	True
If all the actions described above have not been undertaken, explain why	Not answered.

Per Paragraph 4 of Subsection B of 19.15.29.8 NMAC the responsible party may commence remediation immediately after discovery of a release. If remediation has begun, please prepare and attach a narrative of actions to date in the follow-up C-141 submission. If remedial efforts have been successfully completed or if the release occurred within a lined containment area (see 19.15.29.11(A)(5)(a) NMAC), please prepare and attach all information needed for closure evaluation in the follow-up C-141 submission.

Sante Fe Main Office
Phone: (505) 476-3441

General Information
Phone: (505) 629-6116

Online Phone Directory
<https://www.emnrd.nm.gov/ocd/contact-us>

State of New Mexico
Energy, Minerals and Natural Resources
Oil Conservation Division
1220 S. St Francis Dr.
Santa Fe, NM 87505

ACKNOWLEDGMENTS

Action 552551

ACKNOWLEDGMENTS

Operator: BTA OIL PRODUCERS, LLC 104 S Pecos Midland, TX 79701	OGRID: 260297
	Action Number: 552551
	Action Type: [NOTIFY] Notification Of Release (NOR)

ACKNOWLEDGMENTS

<input checked="" type="checkbox"/>	I acknowledge that I am authorized to submit notification of a release on behalf of my operator.
<input checked="" type="checkbox"/>	I acknowledge that upon submitting this application, I will be creating a new incident file (assigned to my operator) to track the notification(s) and corrective action(s) for a release, pursuant to NMAC 19.15.29.
<input checked="" type="checkbox"/>	I acknowledge that creating a new incident file will require my operator to file subsequent submission(s) of form "C-141, Application for administrative approval of a release notification and corrective action", pursuant to NMAC 19.15.29.
<input checked="" type="checkbox"/>	I hereby certify that the information given above is true and complete to the best of my knowledge and understand that pursuant to OCD rules and regulations all operators are required to report and/or file certain release notifications and perform corrective actions for releases which may endanger public health or the environment.
<input checked="" type="checkbox"/>	I acknowledge the fact that the acceptance of a C-141 report by the OCD does not relieve the operator of liability should their operations have failed to adequately investigate and remediate contamination that pose a threat to groundwater, surface water, human health or the environment.
<input checked="" type="checkbox"/>	I acknowledge the fact that, in addition, OCD acceptance of a C-141 report does not relieve the operator of responsibility for compliance with any other federal, state, or local laws and/or regulations.

Sante Fe Main Office
Phone: (505) 476-3441

General Information
Phone: (505) 629-6116

Online Phone Directory
<https://www.emnrd.nm.gov/ocd/contact-us>

State of New Mexico
Energy, Minerals and Natural Resources
Oil Conservation Division
1220 S. St Francis Dr.
Santa Fe, NM 87505

CONDITIONS

Action 552551

CONDITIONS

Operator: BTA OIL PRODUCERS, LLC 104 S Pecos Midland, TX 79701	OGRID: 260297
	Action Number: 552551
	Action Type: [NOTIFY] Notification Of Release (NOR)

CONDITIONS

Created By	Condition	Condition Date
ntinker	When submitting future reports regarding this release, please submit the calculations used or specific justification for the volumes reported on the initial C-141.	2/10/2026

Sante Fe Main Office
Phone: (505) 476-3441

General Information
Phone: (505) 629-6116

Online Phone Directory
<https://www.emnrd.nm.gov/ocd/contact-us>

**State of New Mexico
Energy, Minerals and Natural Resources
Oil Conservation Division
1220 S. St Francis Dr.
Santa Fe, NM 87505**

QUESTIONS

Action 554537

QUESTIONS

Operator: BTA OIL PRODUCERS, LLC 104 S Pecos Midland, TX 79701	OGRID: 260297
	Action Number: 554537
	Action Type: [NOTIFY] Notification Of Liner Inspection (C-141L)

QUESTIONS

Prerequisites	
Incident ID (n#)	nAPP2604155699
Incident Name	NAPP2604155699 PARDUE C5 CTB @ L-11-23S-28E
Incident Type	Produced Water Release
Incident Status	Notification Accepted

Location of Release Source	
Site Name	Pardue C5 CTB
Date Release Discovered	02/09/2026
Surface Owner	Private

Liner Inspection Event Information	
<i>Please answer all the questions in this group.</i>	
What is the liner inspection surface area in square feet	6,500
Have all the impacted materials been removed from the liner	Yes
Liner inspection date pursuant to Subparagraph (a) of Paragraph (5) of Subsection A of 19.15.29.11 NMAC	02/20/2026
Time liner inspection will commence	08:00 AM
Please provide any information necessary for observers to liner inspection	Carmona Resources – 432-813-8988
Please provide any information necessary for navigation to liner inspection site	32.31728,-104.065745

Sante Fe Main Office
Phone: (505) 476-3441

General Information
Phone: (505) 629-6116

Online Phone Directory
<https://www.emnrd.nm.gov/ocd/contact-us>

State of New Mexico
Energy, Minerals and Natural Resources
Oil Conservation Division
1220 S. St Francis Dr.
Santa Fe, NM 87505

CONDITIONS

Action 554537

CONDITIONS

Operator: BTA OIL PRODUCERS, LLC 104 S Pecos Midland, TX 79701	OGRID: 260297
	Action Number: 554537
	Action Type: [NOTIFY] Notification Of Liner Inspection (C-141L)

CONDITIONS

Created By	Condition	Condition Date
ntinker	Failure to notify the OCD of liner inspections including any changes in date/time per the requirements of 19.15.29.11.A(5)(a)(ii) NMAC, may result in the inspection not being accepted.	2/17/2026



Liner Integrity Certification

The following serves to verify that the affected liner has been inspected and found to be in serviceable condition in accordance with 19.15.29.11 A.(5)(a)(i-ii) of the New Mexico Administrative Code.

Facility ID: FAPP2201735675

Date: 02.20.2026

Incident ID(s): nAPP2604155699

- Responsible Party has visually inspected the liner.
- Liner remains intact and was able to contain the leak in question.
- At least two business days' notice was given to the appropriate division district office before conducting the liner inspection.
- Photographs illustrating liner integrity are included.

APPENDIX C

CARMONA RESOURCES



Nearest water well

BTA OIL PRODUCERS, LLC

Legend

- 0.02 Miles
- 0.20 Miles
- 0.30 Miles
- 0.50 Mile Radius
- NMSEO Water Well
- Pardue C5 CTB (02.05.2026)
- USGS Water Well





45' - Drilled 1964

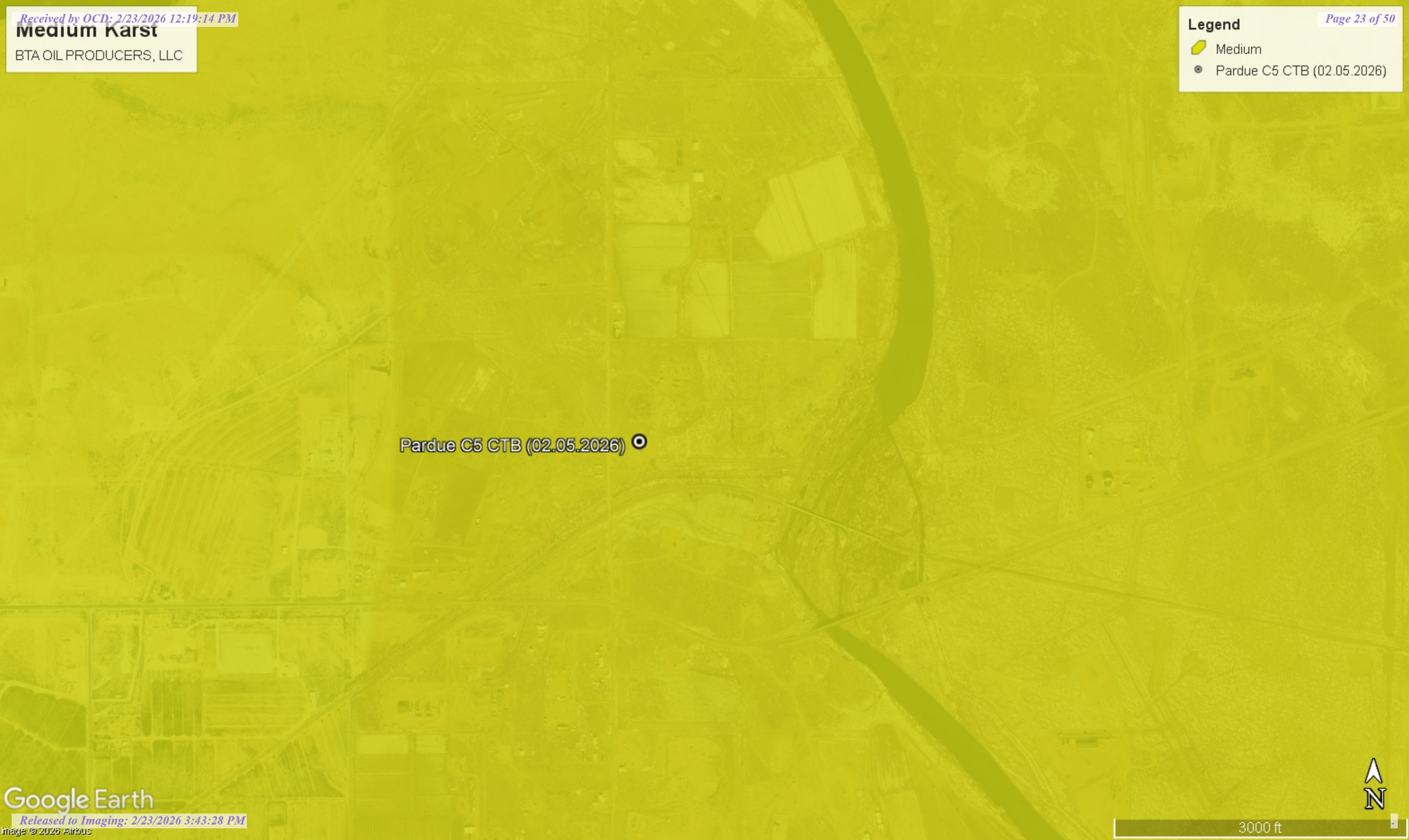



Medium Karst

BTA OIL PRODUCERS, LLC

Legend

-  Medium
-  Pardue C5 CTB (02.05.2026)



Pardue C5 CTB (02.05.2026) 





New Mexico Office of the State Engineer

Water Column/Average Depth to Water

(A CLW##### in the POD suffix indicates the POD has been replaced & no longer serves a water right file.)

(R=POD has been replaced, O=orphaned, C=the file is closed)

(quarters are smallest to largest)

POD Number	Code	Sub basin	County	Q64	Q16	Q4	Sec	Tws	Range	X	Y	Map	(meters)	(In feet)		
													Distance	Well Depth	Depth Water	Water Column
C 00315		CUB	ED	SW	NW	SW	11	23S	28E	587973.0	3575995.0 *	●	32	100	45	55
C 00608		C	ED	SW	SW	NW	11	23S	28E	587970.0	3576401.0 *	●	415	200		
C 04451 POD1		C	ED	SE	SE	SE	10	23S	28E	587833.0	3575521.8	●	477	120	57	63
C 03469 POD1		CUB	ED	SW	SE	SW	11	23S	28E	588373.9	3575538.8	●	623	68	38	30
C 03469 POD3		CUB	ED	SW	SE	SW	11	23S	28E	588381.0	3575538.9	●	628	47		
C 03469 POD2		CUB	ED	SW	SE	SW	11	23S	28E	588382.0	3575506.9	●	651	48		
C 00235		C	ED		NE	NE	15	23S	28E	587676.0	3575280.0 *	●	755	160		
C 04216 POD4		CUB	ED	NE	SE	NW	11	23S	28E	588499.0	3576513.1	●	766	20	10	10
C 00109		CUB	ED	NW	SW	SW	04	23S	27E	588485.8	3576531.4	●	770	168	120	48
C 04216 POD2		CUB	ED	NW	SE	NW	11	23S	28E	588464.6	3576555.9	●	773	20	10	10
C 04216 POD1		CUB	ED	NE	SE	NW	11	23S	28E	588488.3	3576534.5	●	774	20	10	10
C 00512 EXPL	O	CUB	ED			NW	11	23S	28E	588272.0	3576703.0 *	●	788	200	16	184
C 04216 POD3		CUB	ED	NW	SE	NW	11	23S	28E	588501.2	3576556.2	●	798	23	13	10
C 00512		CUB	ED	SE	NW	NW	11	23S	28E	588188.1	3576775.2	●	826	175	15	160
C 00512 CLW198323	O	CUB	ED	SE	NW	NW	11	23S	28E	588167.0	3576806.0 *	●	849	100		
C 00512 S		CUB	ED	SE	NW	NW	11	23S	28E	588167.0	3576806.0 *	●	849	100		
C 00616		CUB	ED	NW	SW	NW	14	23S	28E	587982.0	3574978.0 *	●	1009	120	30	90
C 00321		C	ED		SE	NE	15	23S	28E	587679.0	3574874.0 *	●	1143	120		
C 02503		C	ED		SE	NE	15	23S	28E	587679.0	3574874.0 *	●	1143	70	12	58
C 04831 POD1		CUB	ED	SW	NE	SE	11	23S	28E	589159.0	3576095.1	●	1222	46	33	13
C 00269		C	ED	SE	SE	NE	15	23S	28E	587778.0	3574773.0 *	●	1224	240	35	205
C 00269 CLW199753	O	C	ED	SE	SE	NE	15	23S	28E	587778.0	3574773.0 *	●	1224	240	35	205
C 03460 POD1		CUB	ED	SW	NW	NE	14	23S	28E	588857.4	3575004.2	●	1343	100	38	62
C 02189		C	ED	NW	NW	SW	14	23S	28E	587985.0	3574572.0 *	●	1415	48	29	19
C 00326		CUB	ED	SW	SW	SW	10	23S	28E	586358.0	3575572.0 *	●	1636	130	19	111
C 00326 CLW196238	O	CUB	ED	SW	SW	SW	10	23S	28E	586358.0	3575572.0 *	●	1636	196	25	171
C 00128		C	ED	NE	SE	SE	15	23S	28E	587783.0	3574162.0 *	●	1831	149		
C 00800		C	ED		SE	NE	09	23S	28E	586050.0	3576479.0 *	●	1953	200	30	170
C 00072		CUB	ED	SW	SW	NW	15	23S	28E	586364.0	3574760.0 *	●	1998	120	54	66
C 01216		CUB	ED	SE	NW	NW	13	23S	28E	589801.0	3575205.0 *	●	2017	60	45	15
C 03762 POD3		CUB	ED	SE	NE	NE	16	23S	28E	586203.4	3574642.4	●	2197	40	30	10
C 04418 POD1		CUB	ED	SE	NE	NW	12	23S	28E	590103.6	3576851.2	●	2328	55		
C 04953 POD1		C	ED	NE	NE	NW	22	23S	28E	586969.1	3573799.0	●	2394	200	145	55
C 04584 POD1		CUB	ED	SW	NW	SE	12	23S	28E	590391.8	3576064.2	●	2452	63		
C 01217		CUB	ED	SE	NW	SW	13	23S	28E	589788.9	3574371.9	●	2454	87	50	37
C 00211		C	ED	SE	SW	SW	15	23S	28E	586570.0	3573949.0 *	●	2456	89	48	41
C 00154 CLW194067	O	CUB	ED	SW	NE	NW	23	23S	28E	588395.0	3573566.0 *	●	2463	150	65	85
C 01108		C	ED	SW	NE	NW	23	23S	28E	588395.0	3573566.0 *	●	2463	60	35	25
C 04584 POD2		CUB	ED	SE	NE	NW	13	23S	28E	590250.3	3575123.7	●	2465	34	19	15
C 01214		CUB	ED	NW	NE	SW	13	23S	28E	590010.0	3574597.0 *	●	2492	70	20	50

Average Depth to Water: **37 feet**

Maximum Depth: 145 feet

Record Count: 40

UTM Filters (in meters):

Easting: 587941.00

Northing: 3575987.00

Radius: 2500

* UTM location was derived from PLSS - see Help

The data is furnished by the NMOSE/ISC and is accepted by the recipient with the expressed understanding that the OSE/ISC make no warranties, expressed or implied, concerning the accuracy, completeness, reliability, usability, or suitability for any particular purpose of the data.

(This form to be executed in triplicate)

WELL RECORD

Date of Receipt.....

Permit No. 0 - 315

Name of permittee, Jose Arevalo

Street or P.O., ?, City and State, ? Texas

1. Well location and description: The shallow well is located in ? $\frac{1}{4}$, ? $\frac{1}{4}$,
(shallow or artesian)

? $\frac{1}{4}$ of Section ?, Township ?, Range ?; Elevation of top of

casing above sea level, ? feet; diameter of hole, 18 inches; total depth, 100 feet;

depth to water upon completion, 45 feet; drilling was commenced 6-16, 1952,

and completed 6-20, 1952; name of drilling contractor J. F. Kimmell

Box 49; Address, Carlsbad, N. M.; Driller's License No.

2. Principal Water-bearing Strata:

	Depth in Feet		Thickness	Description of Water-bearing Formation
	From	To		
No. 1	<u>00</u>	<u>45</u>	<u>45</u>	<u>Sand & Gravel</u>
No. 2				
No. 3				
No. 4				
No. 5				

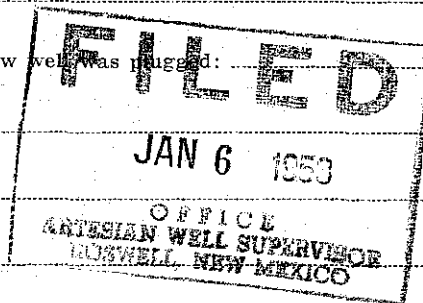
3. Casing Record:

Diameter in inches	Pounds per ft.	Threads per inch	Depth of Casing or Liner		Feet of Casing	Type of Shoe	Perforations	
			Top	Bottom			From	To
<u>16</u>			<u>surface</u>	<u>45</u>	<u>45</u>			

4. If above construction replaces old well to be abandoned, give location: ? $\frac{1}{4}$, ? $\frac{1}{4}$, ? $\frac{1}{4}$

of Section ?, Township ?, Range ?; name and address of plugging contractor,

date of plugging ?, 19?; describe how well was plugged:



C-315
465241

(This form to be executed in triplicate)

WELL RECORD

Date of Receipt _____ Permit No. 0 - 315

Name of permittee, Jose Arevalo

Street or P.O., ?, City and State Texas

1. Well location and description: The shallow well is located in ? $\frac{1}{4}$, ? $\frac{1}{4}$,
(shallow or artesian)

? $\frac{1}{4}$ of Section ?, Township ?, Range ?; Elevation of top of

casing above sea level, _____ feet; diameter of hole, 18 inches; total depth, 80 feet;

depth to water upon completion, 10 feet; drilling was commenced 8-22, 19 52,

and completed 8-26, 19 52; name of drilling contractor J. F. Kimmell

Box 49; Address, Carlsbad, N. M.; Driller's License No. _____

2. Principal Water-bearing Strata:

	Depth in Feet		Thickness	Description of Water-bearing Formation
	From	To		
No. 1	<u>25</u>	<u>30</u>	<u>5</u>	<u>Lime</u>
No. 2				
No. 3				
No. 4				
No. 5				

3. Casing Record:

Diameter in inches	Pounds per ft.	Threads per inch	Depth of Casing or Liner		Feet of Casing	Type of Shoe	Perforations	
			Top	Bottom			From	To
<u>16</u>		<u>00</u>	<u>surface</u>	<u>33</u>	<u>33</u>	<u>00</u>	<u>13</u>	<u>33</u>
<u>casing pulled</u>								
<u>acidized with 750 gallons from 23' to 31'</u>								

4. If above construction replaces old well to be abandoned, give location: _____ $\frac{1}{4}$, _____ $\frac{1}{4}$, _____ $\frac{1}{4}$
of Section _____, Township _____, Range _____; name and address of plugging contractor,

date of plugging _____, 19 _____; describe how well was plugged: _____

SEP 22 1952
 CARLSBAD, N. M.
 COUNTY OF DOLORES
 STATE OF NEW MEXICO

8

(This form to be executed in triplicate)

WELL RECORD

Date of Receipt: _____ Permit No. 0-315

Name of permittee, Jose Arevalo

Street or P.O., ?, City and State, Texas

1. Well location and description: The shallow well is located in ? $\frac{1}{4}$, ? $\frac{1}{4}$,
(shallow or artesian)

? $\frac{1}{4}$ of Section ?, Township ?, Range ?; Elevation of top of

casing above sea level, _____ feet; diameter of hole, 18 inches; total depth, 178 feet;

depth to water upon completion, _____ feet; drilling was commenced 5-10, 19 52,

and completed 5-19, 1952; name of drilling contractor J. F. Kimmell

Box 49; Address, Carlsbad, N. M.; Driller's License No. _____

2. Principal Water-bearing Strata:

	Depth in Feet		Thickness	Description of Water-bearing Formation
	From	To		
No. 1				
No. 2				
No. 3				
No. 4				
No. 5				

3. Casing Record:

Diameter in inches	Pounds per ft.	Threads per inch	Depth of Casing or Liner		Feet of Casing	Type of Shoe	Perforations	
			Top	Bottom			From	To
<u>16</u>		<u>00</u>	<u>surface</u>	<u>140</u>	<u>140</u>	<u>00</u>	<u>75</u>	<u>130</u>

all casing pulled

4. If above construction replaces old well to be abandoned, give location: _____ $\frac{1}{4}$, _____ $\frac{1}{4}$, _____ $\frac{1}{4}$

of Section _____, Township _____, Range _____; name and address of plugging contractor, _____

date of plugging _____, 19 _____; describe how well was plugged: _____

(This form to be executed in triplicate)

WELL RECORD

Date of Receipt _____ Permit No. 0-315

Name of permittee, Jose Arevalo
San Elizario, El Paso
Street or P.O., 53, City and State El Paso, Texas

1. Well location and description: The shallow well is located in _____, _____, _____
(shallow or artesian)
_____ of Section 11, Township 23S, Range 28E; Elevation of top of casing above sea level, _____ feet; diameter of hole, 18 inches; total depth, 150 feet; depth to water upon completion, 140 feet; drilling was commenced Oct. 20, 19 53, and completed Oct. 28, 19 53; name of drilling contractor J. F. Kimmell
Box 49; Address, Carlsbad, N. M.; Driller's License No applied for

2. Principal Water-bearing Strata:

	Depth in Feet		Thickness	Description of Water-bearing Formation
	From	To		
No. 1	<u>33</u>	<u>35</u>	<u>2</u>	<u>Gravel & Clay-very little water</u>
No. 2				
No. 3				
No. 4				
No. 5				

3. Casing Record:

Diameter in inches	Pounds per ft.	Threads per inch	Depth of Casing or Liner		Feet of Casing	Type of Shoe	Perforations	
			Top	Bottom			From	To
<u>NONE</u>								

4. If above construction replaces old well to be abandoned, give location: _____, _____, _____
of Section _____, Township _____, Range _____; name and address of plugging contractor, _____
date of plugging _____, 19 _____; describe how well was plugged: _____



USGS Home
Contact USGS
Search USGS

National Water Information System: Web Interface

USGS Water Resources

Data Category: Geographic Area:

Click to hide News Bulletins

- Explore the [NEW USGS National Water Dashboard](#) interactive map to access real-time water data from over 13,500 stations nationwide.

Groundwater levels for New Mexico

Click to hide state-specific text

i Ground water level pages will be decommissioned in early 2026. These gwlevel pages are frozen as of November 18th, 2025. Please find the [modernized pages in WDFN](#) that suit you best. Learn more about our [modernization plans and timeline](#) and [new pages](#).

Search Results -- 1 sites found

Agency code = usgs
site_no list =
• 321911104035001

Minimum number of levels = 1

[Save file of selected sites](#) to local disk for future upload

USGS 321911104035001 23S.28E.11.311111

Eddy County, New Mexico
Latitude 32°19'11", Longitude 104°03'50" NAD27
Land-surface elevation 2,990 feet above NAVD88
The depth of the well is 95 feet below land surface.
This well is completed in the Other aquifers (N9999OTHER) national aquifer.
This well is completed in the Alluvium, Bolson Deposits and Other Surface Deposits (110AVMB) local aquifer.

Output formats

Table of data
Tab-separated data
Graph of data
Reselect period

Date	Time	? Water-level date-time accuracy	? Parameter code	Water level, feet below land surface	Water level, feet above specific vertical datum	Referenced vertical datum	? Status	? Method of measurement	? Measuring agency	? Source of measurement	? Water-level approval status
1947-02-07			D	62610	2972.73	NGVD29	1	Z			A
1947-02-07			D	62611	2974.30	NAVD88	1	Z			A
1947-02-07			D	72019	15.70		1	Z			A

Explanation

Section	Code	Description
Water-level date-time accuracy	D	Date is accurate to the Day
Parameter code	62610	Groundwater level above NGVD 1929, feet
Parameter code	62611	Groundwater level above NAVD 1988, feet
Parameter code	72019	Depth to water level, feet below land surface
Referenced vertical datum	NAVD88	North American Vertical Datum of 1988
Referenced vertical datum	NGVD29	National Geodetic Vertical Datum of 1929
Status	1	Static
Method of measurement	Z	Other.
Measuring agency		Not determined
Source of measurement		Not determined
Water-level approval status	A	Approved for publication -- Processing and review completed.

- [Questions or Comments](#)
- [Help](#)
- [Data Tips](#)
- [Explanation of terms](#)
- [Subscribe for system changes](#)

2/11/26, 6:39 AM

[Accessibility](#) [FOIA](#) [Privacy](#) [Policies and Notices](#)

[U.S. Department of the Interior](#) | [U.S. Geological Survey](#)

Title: Groundwater for New Mexico: Water Levels

URL: <https://nwis.waterdata.usgs.gov/nm/nwis/gwlevels?>



Page Contact Information: [New Mexico Water Data Maintainer](#)

Page Last Modified: 2026-02-11 07:38:13 EST

0.38 0.32 nadww02



WELL RECORD & LOG

OFFICE OF THE STATE ENGINEER

www.ose.state.nm.us

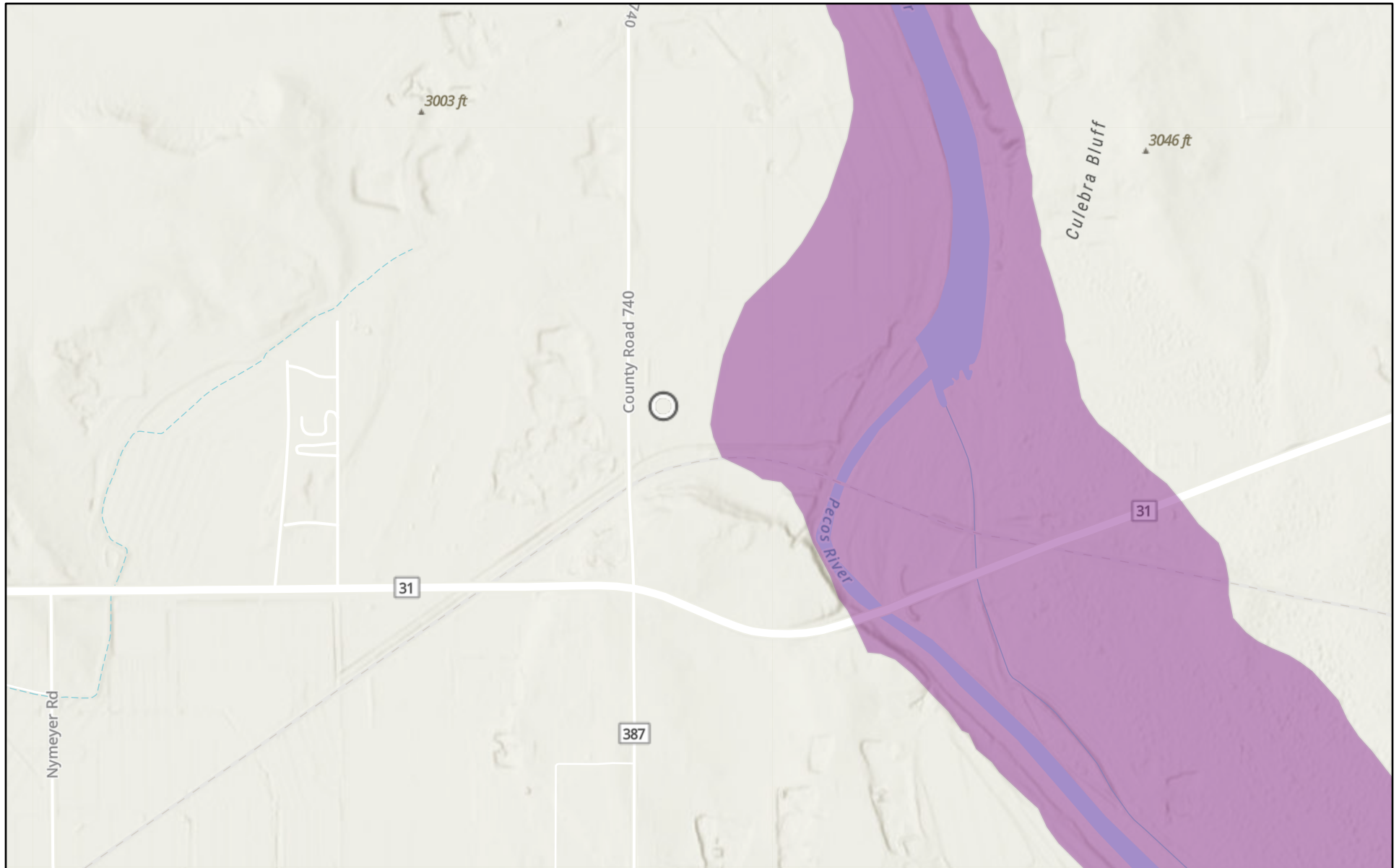
1. GENERAL AND WELL LOCATION	OSE POD NO. (WELL NO.) <u>1</u>		WELL TAG ID NO. <u>20C1F</u>		OSE FILE NO(S). <u>C-04451</u>			
	WELL OWNER NAME(S) <u>AL Fred CARRASCO</u>				PHONE (OPTIONAL)			
	WELL OWNER MAILING ADDRESS <u>PO BOX 515</u>				CITY <u>Loving</u>	STATE <u>NM</u>	ZIP <u>88256</u>	
	WELL LOCATION (FROM GPS)	LATITUDE	DEGREES <u>32</u>	MINUTES <u>18</u>	SECONDS <u>47.1</u>	N		
	LONGITUDE	<u>104</u>	<u>4</u>	<u>1</u>	W			
* ACCURACY REQUIRED: ONE TENTH OF A SECOND								
* DATUM REQUIRED: WGS 84								
DESCRIPTION RELATING WELL LOCATION TO STREET ADDRESS AND COMMON LANDMARKS - PLSS (SECTION, TOWNSHIP, RANGE) WHERE AVAILABLE <u>7410 county Road #15 north DOWALSON Road</u>								
2. DRILLING & CASING INFORMATION	LICENSE NO. <u>1400</u>		NAME OF LICENSED DRILLER <u>MARK HAMMOND</u>		NAME OF WELL DRILLING COMPANY <u>SOUTH EAST DRILLING</u>			
	DRILLING STARTED <u>9-28-2020</u>	DRILLING ENDED <u>10-1-2020</u>	DEPTH OF COMPLETED WELL (FT) <u>120</u>	BORE HOLE DEPTH (FT) <u>120</u>	DEPTH WATER FIRST ENCOUNTERED (FT) <u>57</u>			
	COMPLETED WELL IS: <input type="checkbox"/> ARTESIAN <input type="checkbox"/> DRY HOLE <input checked="" type="checkbox"/> SHALLOW (UNCONFINED)				STATIC WATER LEVEL IN COMPLETED WELL (FT) <u>50</u>			
	DRILLING FLUID: <input type="checkbox"/> AIR <input type="checkbox"/> MUD ADDITIVES - SPECIFY:							
	DRILLING METHOD: <input type="checkbox"/> ROTARY <input type="checkbox"/> HAMMER <input checked="" type="checkbox"/> CABLE TOOL <input type="checkbox"/> OTHER - SPECIFY:							
	DEPTH (feet bgl)		BORE HOLE DIAM (inches)	CASING MATERIAL AND/OR GRADE (include each casing string, and note sections of screen)	CASING CONNECTION TYPE (add coupling diameter)	CASING INSIDE DIAM. (inches)	CASING WALL THICKNESS (inches)	SLOT SIZE (inches)
	FROM	TO						
	<u>0</u>	<u>60</u>	<u>9"</u>	<u>PVC</u>	<u>CEPTALOCK</u>	<u>5"</u>	<u>SCD 200</u>	<u>-0-</u>
	<u>60</u>	<u>120</u>	<u>9"</u>	<u>PVC</u>	<u>CEPTALOCK</u>	<u>5"</u>	<u>2CD 200</u>	<u>0.32</u>
	DEPTH (feet bgl)		BORE HOLE DIAM. (inches)	LIST ANNULAR SEAL MATERIAL AND GRAVEL PACK SIZE-RANGE BY INTERVAL	AMOUNT (cubic feet)	METHOD OF PLACEMENT		
FROM	TO							
<u>0</u>	<u>20</u>	<u>9"</u>	<u>BENTONITE & CEMENT</u>	<u>3/4 YARD</u>	<u>HAND</u>			
<u>20</u>	<u>120</u>	<u>9"</u>	<u>3/8 gravel</u>	<u>3 YARDS</u>	<u>HAND</u>			

FOR OSE INTERNAL USE

WR-20 WELL RECORD & LOG (Version 04/30/19)

FILE NO. <u>C-4451-POD1</u>	POD NO. <u>1</u>	TRN NO. <u>67477</u>
LOCATION <u>Dome St 23.28.10.444</u>	WELL TAG ID NO. <u>20C1F</u>	PAGE 1 OF 2

Pardue C5 CTB (02.05.2026)

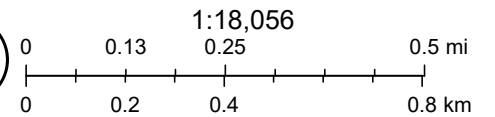


2/10/2026

USA Flood Hazard Areas

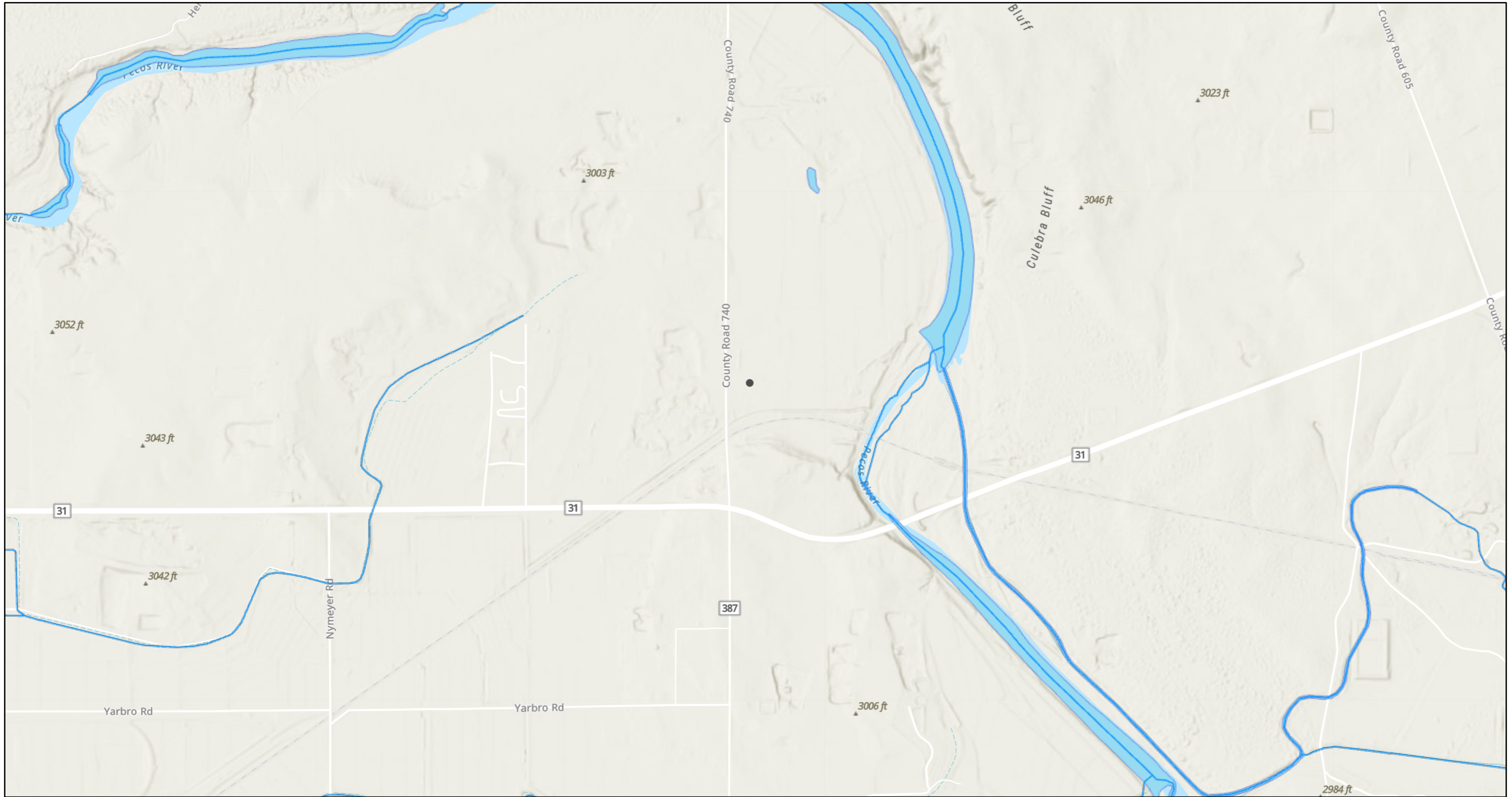
 1% Annual Chance Flood Hazard

World_Hillshade



Esri, NASA, NGA, USGS, FEMA, Sources: Esri, TomTom, Garmin, FAO, NOAA, USGS, (c) OpenStreetMap contributors, and the GIS User

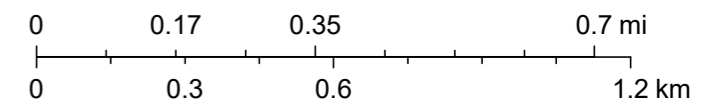
Pardue C5 CTB (02.05.2026)



2/11/2026, 6:31:11 AM

1:18,056

- OSW Water Bodys
- OSE Streams



Esri, NASA, NGA, USGS, FEMA, Sources: Esri, TomTom, Garmin, FAO, NOAA, USGS, © OpenStreetMap contributors, and the GIS User Community, NM OSE



February 11, 2026

Wetlands

- | | | | | | |
|---|--------------------------------|---|-----------------------------------|---|----------|
|  | Estuarine and Marine Deepwater |  | Freshwater Emergent Wetland |  | Lake |
|  | Estuarine and Marine Wetland |  | Freshwater Forested/Shrub Wetland |  | Other |
| | |  | Freshwater Pond |  | Riverine |

This map is for general reference only. The US Fish and Wildlife Service is not responsible for the accuracy or currentness of the base data shown on this map. All wetlands related data should be used in accordance with the layer metadata found on the Wetlands Mapper web site.

Sante Fe Main Office
Phone: (505) 476-3441

General Information
Phone: (505) 629-6116

Online Phone Directory
<https://www.emnrd.nm.gov/ocd/contact-us>

State of New Mexico
Energy, Minerals and Natural Resources
Oil Conservation Division
1220 S. St Francis Dr.
Santa Fe, NM 87505

QUESTIONS

Action 556626

QUESTIONS

Operator: BTA OIL PRODUCERS, LLC 104 S Pecos Midland, TX 79701	OGRID: 260297
	Action Number: 556626
	Action Type: [C-141] Remediation Closure Request C-141 (C-141-v-Closure)

QUESTIONS

Prerequisites	
Incident ID (n#)	nAPP2604155699
Incident Name	NAPP2604155699 PARDUE C5 CTB @ L-11-23S-28E
Incident Type	Produced Water Release
Incident Status	Remediation Closure Report Received

Location of Release Source	
<i>Please answer all the questions in this group.</i>	
Site Name	Pardue C5 CTB
Date Release Discovered	02/09/2026
Surface Owner	Private

Incident Details	
<i>Please answer all the questions in this group.</i>	
Incident Type	Produced Water Release
Did this release result in a fire or is the result of a fire	No
Did this release result in any injuries	No
Has this release reached or does it have a reasonable probability of reaching a watercourse	No
Has this release endangered or does it have a reasonable probability of endangering public health	No
Has this release substantially damaged or will it substantially damage property or the environment	No
Is this release of a volume that is or may with reasonable probability be detrimental to fresh water	No

Nature and Volume of Release	
<i>Material(s) released, please answer all that apply below. Any calculations or specific justifications for the volumes provided should be attached to the follow-up C-141 submission.</i>	
Crude Oil Released (bbls) Details	Not answered.
Produced Water Released (bbls) Details	Cause: Equipment Failure Water Tank Produced Water Released: 360 BBL Recovered: 360 BBL Lost: 0 BBL.
Is the concentration of chloride in the produced water >10,000 mg/l	Yes
Condensate Released (bbls) Details	Not answered.
Natural Gas Vented (Mcf) Details	Not answered.
Natural Gas Flared (Mcf) Details	Not answered.
Other Released Details	Not answered.
Are there additional details for the questions above (i.e. any answer containing Other, Specify, Unknown, and/or Fire, or any negative lost amounts)	Not answered.

Sante Fe Main Office
Phone: (505) 476-3441

General Information
Phone: (505) 629-6116

Online Phone Directory
<https://www.emnrd.nm.gov/ocd/contact-us>

State of New Mexico
Energy, Minerals and Natural Resources
Oil Conservation Division
1220 S. St Francis Dr.
Santa Fe, NM 87505

QUESTIONS, Page 2

Action 556626

QUESTIONS (continued)

Operator: BTA OIL PRODUCERS, LLC 104 S Pecos Midland, TX 79701	OGRID: 260297
	Action Number: 556626
	Action Type: [C-141] Remediation Closure Request C-141 (C-141-v-Closure)

QUESTIONS

Nature and Volume of Release (continued)	
Is this a gas only submission (i.e. only significant Mcf values reported)	No, according to supplied volumes this does not appear to be a "gas only" report.
Was this a major release as defined by Subsection A of 19.15.29.7 NMAC	Yes
Reasons why this would be considered a submission for a notification of a major release	From paragraph A. "Major release" determine using: (1) an unauthorized release of a volume, excluding gases, of 25 barrels or more.

With the implementation of the 19.15.27 NMAC (05/25/2021), venting and/or flaring of natural gas (i.e. gas only) are to be submitted on the C-129 form.

Initial Response

The responsible party must undertake the following actions immediately unless they could create a safety hazard that would result in injury.

The source of the release has been stopped	True
The impacted area has been secured to protect human health and the environment	True
Released materials have been contained via the use of berms or dikes, absorbent pads, or other containment devices	True
All free liquids and recoverable materials have been removed and managed appropriately	True
If all the actions described above have not been undertaken, explain why	<i>Not answered.</i>

Per Paragraph (4) of Subsection B of 19.15.29.8 NMAC the responsible party may commence remediation immediately after discovery of a release. If remediation has begun, please prepare and attach a narrative of actions to date in the follow-up C-141 submission. If remedial efforts have been successfully completed or if the release occurred within a lined containment area (see Subparagraph (a) of Paragraph (5) of Subsection A of 19.15.29.11 NMAC), please prepare and attach all information needed for closure evaluation in the follow-up C-141 submission.

I hereby certify that the information given above is true and complete to the best of my knowledge and understand that pursuant to OCD rules and regulations all operators are required to report and/or file certain release notifications and perform corrective actions for releases which may endanger public health or the environment. The acceptance of a C-141 report by the OCD does not relieve the operator of liability should their operations have failed to adequately investigate and remediate contamination that pose a threat to groundwater, surface water, human health or the environment. In addition, OCD acceptance of a C-141 report does not relieve the operator of responsibility for compliance with any other federal, state, or local laws and/or regulations.

I hereby agree and sign off to the above statement	Name: Noah Tinker Title: Engineer Email: ntinker@btaoil.com Date: 02/23/2026
--	---

Sante Fe Main Office
Phone: (505) 476-3441

General Information
Phone: (505) 629-6116

Online Phone Directory
<https://www.emnrd.nm.gov/ocd/contact-us>

State of New Mexico
Energy, Minerals and Natural Resources
Oil Conservation Division
1220 S. St Francis Dr.
Santa Fe, NM 87505

QUESTIONS, Page 3

Action 556626

QUESTIONS (continued)

Operator: BTA OIL PRODUCERS, LLC 104 S Pecos Midland, TX 79701	OGRID: 260297
	Action Number: 556626
	Action Type: [C-141] Remediation Closure Request C-141 (C-141-v-Closure)

QUESTIONS

Site Characterization

Please answer all the questions in this group (only required when seeking remediation plan approval and beyond). This information must be provided to the appropriate district office no later than 90 days after the release discovery date.

What is the shallowest depth to groundwater beneath the area affected by the release in feet below ground surface (ft bgs)	Less than or equal 25 (ft.)
What method was used to determine the depth to ground water	U.S. Geological Survey
Did this release impact groundwater or surface water	No
What is the minimum distance, between the closest lateral extents of the release and the following surface areas:	
A continuously flowing watercourse or any other significant watercourse	Between 1000 (ft.) and ½ (mi.)
Any lakebed, sinkhole, or playa lake (measured from the ordinary high-water mark)	Between 1000 (ft.) and ½ (mi.)
An occupied permanent residence, school, hospital, institution, or church	Between 1000 (ft.) and ½ (mi.)
A spring or a private domestic fresh water well used by less than five households for domestic or stock watering purposes	Between 1000 (ft.) and ½ (mi.)
Any other fresh water well or spring	Between 1000 (ft.) and ½ (mi.)
Incorporated municipal boundaries or a defined municipal fresh water well field	Between 1 and 5 (mi.)
A wetland	Between 1000 (ft.) and ½ (mi.)
A subsurface mine	Greater than 5 (mi.)
An (non-karst) unstable area	Zero feet, overlying, or within area
Categorize the risk of this well / site being in a karst geology	Medium
A 100-year floodplain	Between 1000 (ft.) and ½ (mi.)
Did the release impact areas not on an exploration, development, production, or storage site	No

Remediation Plan

Please answer all the questions that apply or are indicated. This information must be provided to the appropriate district office no later than 90 days after the release discovery date.

Requesting a remediation plan approval with this submission	Yes
<i>Attach a comprehensive report demonstrating the lateral and vertical extents of soil contamination associated with the release have been determined, pursuant to 19.15.29.11 NMAC and 19.15.29.13 NMAC.</i>	
Have the lateral and vertical extents of contamination been fully delineated	Yes
Was this release entirely contained within a lined containment area	Yes
<i>Per Subsection B of 19.15.29.11 NMAC unless the site characterization report includes completed efforts at remediation, the report must include a proposed remediation plan in accordance with 19.15.29.12 NMAC, which includes the anticipated timelines for beginning and completing the remediation.</i>	
On what estimated date will the remediation commence	02/11/2026
On what date will (or did) the final sampling or liner inspection occur	02/20/2026
On what date will (or was) the remediation complete(d)	02/11/2026
What is the estimated surface area (in square feet) that will be remediated	6500
What is the estimated volume (in cubic yards) that will be remediated	0

These estimated dates and measurements are recognized to be the best guess or calculation at the time of submission and may (be) change(d) over time as more remediation efforts are completed. The OCD recognizes that proposed remediation measures may have to be minimally adjusted in accordance with the physical realities encountered during remediation. If the responsible party has any need to significantly deviate from the remediation plan proposed, then it should consult with the division to determine if another remediation plan submission is required.

Sante Fe Main Office
Phone: (505) 476-3441

General Information
Phone: (505) 629-6116

Online Phone Directory
<https://www.emnrd.nm.gov/ocd/contact-us>

State of New Mexico
Energy, Minerals and Natural Resources
Oil Conservation Division
1220 S. St Francis Dr.
Santa Fe, NM 87505

QUESTIONS, Page 4

Action 556626

QUESTIONS (continued)

Operator: BTA OIL PRODUCERS, LLC 104 S Pecos Midland, TX 79701	OGRID: 260297
	Action Number: 556626
	Action Type: [C-141] Remediation Closure Request C-141 (C-141-v-Closure)

QUESTIONS

Remediation Plan (continued)	
<i>Please answer all the questions that apply or are indicated. This information must be provided to the appropriate district office no later than 90 days after the release discovery date.</i>	
This remediation will (or is expected to) utilize the following processes to remediate / reduce contaminants:	
<i>(Select all answers below that apply.)</i>	
Is (or was) there affected material present needing to be removed	Yes
Is (or was) there a power wash of the lined containment area (to be) performed	Yes
OTHER (Non-listed remedial process)	Not answered.
<i>Per Subsection B of 19.15.29.11 NMAC unless the site characterization report includes completed efforts at remediation, the report must include a proposed remediation plan in accordance with 19.15.29.12 NMAC, which includes the anticipated timelines for beginning and completing the remediation.</i>	
I hereby certify that the information given above is true and complete to the best of my knowledge and understand that pursuant to OCD rules and regulations all operators are required to report and/or file certain release notifications and perform corrective actions for releases which may endanger public health or the environment. The acceptance of a C-141 report by the OCD does not relieve the operator of liability should their operations have failed to adequately investigate and remediate contamination that pose a threat to groundwater, surface water, human health or the environment. In addition, OCD acceptance of a C-141 report does not relieve the operator of responsibility for compliance with any other federal, state, or local laws and/or regulations.	
I hereby agree and sign off to the above statement	Name: Noah Tinker Title: Engineer Email: ntinker@btaoil.com Date: 02/23/2026
<i>The OCD recognizes that proposed remediation measures may have to be minimally adjusted in accordance with the physical realities encountered during remediation. If the responsible party has any need to significantly deviate from the remediation plan proposed, then it should consult with the division to determine if another remediation plan submission is required.</i>	

Sante Fe Main Office
Phone: (505) 476-3441

General Information
Phone: (505) 629-6116

Online Phone Directory
<https://www.emnrd.nm.gov/ocd/contact-us>

State of New Mexico
Energy, Minerals and Natural Resources
Oil Conservation Division
1220 S. St Francis Dr.
Santa Fe, NM 87505

QUESTIONS, Page 6

Action 556626

QUESTIONS (continued)

Operator: BTA OIL PRODUCERS, LLC 104 S Pecos Midland, TX 79701	OGRID: 260297
	Action Number: 556626
	Action Type: [C-141] Remediation Closure Request C-141 (C-141-v-Closure)

QUESTIONS

Liner Inspection Information	
Last liner inspection notification (C-141L) recorded	554537
Liner inspection date pursuant to Subparagraph (a) of Paragraph (5) of Subsection A of 19.15.29.11 NMAC	02/20/2026
Was all the impacted materials removed from the liner	Yes
What was the liner inspection surface area in square feet	6500

Remediation Closure Request	
<i>Only answer the questions in this group if seeking remediation closure for this release because all remediation steps have been completed.</i>	
Requesting a remediation closure approval with this submission	Yes
Have the lateral and vertical extents of contamination been fully delineated	Yes
Was this release entirely contained within a lined containment area	Yes
What was the total surface area (in square feet) remediated	6500
What was the total volume (cubic yards) remediated	0
Summarize any additional remediation activities not included by answers (above)	The entire containment area was power washed and all released fluid was removed from the containment prior to the linear inspection

The responsible party must attach information demonstrating they have complied with all applicable closure requirements and any conditions or directives of the OCD. This demonstration should be in the form of a comprehensive report (in .pdf format) including a scaled site map, sampling diagrams, relevant field notes, photographs of any excavation prior to backfilling, laboratory data including chain of custody documents of final sampling, and a narrative of the remedial activities. Refer to 19.15.29.12 NMAC.

I hereby certify that the information given above is true and complete to the best of my knowledge and understand that pursuant to OCD rules and regulations all operators are required to report and/or file certain release notifications and perform corrective actions for releases which may endanger public health or the environment. The acceptance of a C-141 report by the OCD does not relieve the operator of liability should their operations have failed to adequately investigate and remediate contamination that pose a threat to groundwater, surface water, human health or the environment. In addition, OCD acceptance of a C-141 report does not relieve the operator of responsibility for compliance with any other federal, state, or local laws and/or regulations. The responsible party acknowledges they must substantially restore, reclaim, and re-vegetate the impacted surface area to the conditions that existed prior to the release or their final land use in accordance with 19.15.29.13 NMAC including notification to the OCD when reclamation and re-vegetation are complete.

I hereby agree and sign off to the above statement	Name: Noah Tinker Title: Engineer Email: ntinker@btaoil.com Date: 02/23/2026
--	---

Sante Fe Main Office
Phone: (505) 476-3441

General Information
Phone: (505) 629-6116

Online Phone Directory
<https://www.emnrd.nm.gov/ocd/contact-us>

State of New Mexico
Energy, Minerals and Natural Resources
Oil Conservation Division
1220 S. St Francis Dr.
Santa Fe, NM 87505

CONDITIONS

Action 556626

CONDITIONS

Operator: BTA OIL PRODUCERS, LLC 104 S Pecos Midland, TX 79701	OGRID: 260297
	Action Number: 556626
	Action Type: [C-141] Remediation Closure Request C-141 (C-141-v-Closure)

CONDITIONS

Created By	Condition	Condition Date
rhamlet	We have received your Remediation Closure Report for Incident #nAPP2604155699 Pardue C5 CTB, thank you. This Remediation Closure Report is approved.	2/23/2026