

Sante Fe Main Office  
Phone: (505) 476-3441

General Information  
Phone: (505) 629-6116

Online Phone Directory  
<https://www.emnrd.nm.gov/ocd/contact-us>

**State of New Mexico**  
**Energy, Minerals and Natural Resources**  
**Oil Conservation Division**  
**1220 S. St Francis Dr.**  
**Santa Fe, NM 87505**

QUESTIONS

Action 494036

**QUESTIONS**

Operator: CIMAREX ENERGY CO. OF COLORADO 6001 Deauville Blvd Midland, TX 79706	OGRID: 162683
	Action Number: 494036
	Action Type: [NOTIFY] Notification Of Release (NOR)

**QUESTIONS**

<b>Location of Release Source</b>	
<i>Please answer all the questions in this group.</i>	
Site Name	LAGUNA DEEP FEDERAL UNIT 8
Date Release Discovered	08/10/2025
Surface Owner	Private

<b>Incident Details</b>	
<i>Please answer all the questions in this group.</i>	
Incident Type	Produced Water Release
Did this release result in a fire or is the result of a fire	No
Did this release result in any injuries	No
Has this release reached or does it have a reasonable probability of reaching a watercourse	No
Has this release endangered or does it have a reasonable probability of endangering public health	No
Has this release substantially damaged or will it substantially damage property or the environment	No
Is this release of a volume that is or may with reasonable probability be detrimental to fresh water	No

<b>Nature and Volume of Release</b>	
<i>Material(s) released, please answer all that apply below. Any calculations or specific justifications for the volumes provided should be attached to the follow-up C-141 submission.</i>	
Crude Oil Released (bbls) Details	Not answered.
Produced Water Released (bbls) Details	Cause: Equipment Failure   Tank (Any)   Produced Water   Released: 14 BBL   Recovered: 13 BBL   Lost: 1 BBL.
Is the concentration of chloride in the produced water >10,000 mg/l	Yes
Condensate Released (bbls) Details	Not answered.
Natural Gas Vented (Mcf) Details	Not answered.
Natural Gas Flared (Mcf) Details	Not answered.
Other Released Details	Not answered.
Are there additional details for the questions above (i.e. any answer containing Other, Specify, Unknown, and/or Fire, or any negative lost amounts)	We experienced a minor reportable release at the Laguna Deep Unit 8 Facility. The lease operator arrived on location and discovered fluid within the gravel lined tank containment area. Further examination revealed the separator was carrying fluid over to the sales scrubber. This led to the sales scrubber discharging fluid into the oil tank, ultimately causing the tank to overflow into the containment. As a result, an estimated 14 barrels of produced water were released into the gravel-lined containment. A vacuum truck successfully recovered 13 barrels fluids from the containment. The impacted gravel will be removed, and a liner inspection scheduled in the coming weeks.

Sante Fe Main Office  
Phone: (505) 476-3441

General Information  
Phone: (505) 629-6116

Online Phone Directory  
<https://www.emnrd.nm.gov/ocd/contact-us>

**State of New Mexico  
Energy, Minerals and Natural Resources  
Oil Conservation Division  
1220 S. St Francis Dr.  
Santa Fe, NM 87505**

QUESTIONS, Page 2

Action 494036

**QUESTIONS (continued)**

Operator: CIMAREX ENERGY CO. OF COLORADO 6001 Deauville Blvd Midland, TX 79706	OGRID: 162683
	Action Number: 494036
	Action Type: [NOTIFY] Notification Of Release (NOR)

**QUESTIONS**

<b>Nature and Volume of Release (continued)</b>	
Is this a gas only submission (i.e. only significant Mcf values reported)	<b>No, according to supplied volumes this does not appear to be a "gas only" report.</b>
Was this a major release as defined by Subsection A of 19.15.29.7 NMAC	<b>No</b>
Reasons why this would be considered a submission for a notification of a major release	<i>Unavailable.</i>

*With the implementation of the 19.15.27 NMAC (05/25/2021), venting and/or flaring of natural gas (i.e. gas only) are to be submitted on the C-129 form.*

**Initial Response**

*The responsible party must undertake the following actions immediately unless they could create a safety hazard that would result in injury.*

The source of the release has been stopped	<b>True</b>
The impacted area has been secured to protect human health and the environment	<b>True</b>
Released materials have been contained via the use of berms or dikes, absorbent pads, or other containment devices	<b>True</b>
All free liquids and recoverable materials have been removed and managed appropriately	<b>True</b>
If all the actions described above have not been undertaken, explain why	<i>Not answered.</i>

*Per Paragraph 4 of Subsection B of 19.15.29.8 NMAC the responsible party may commence remediation immediately after discovery of a release. If remediation has begun, please prepare and attach a narrative of actions to date in the follow-up C-141 submission. If remedial efforts have been successfully completed or if the release occurred within a lined containment area (see 19.15.29.11(A)(5)(a) NMAC), please prepare and attach all information needed for closure evaluation in the follow-up C-141 submission.*

Sante Fe Main Office  
Phone: (505) 476-3441

General Information  
Phone: (505) 629-6116

Online Phone Directory  
<https://www.emnrd.nm.gov/ocd/contact-us>

**State of New Mexico**  
**Energy, Minerals and Natural Resources**  
**Oil Conservation Division**  
**1220 S. St Francis Dr.**  
**Santa Fe, NM 87505**

ACKNOWLEDGMENTS

Action 494036

**ACKNOWLEDGMENTS**

Operator: CIMAREX ENERGY CO. OF COLORADO 6001 Deauville Blvd Midland, TX 79706	OGRID: 162683
	Action Number: 494036
	Action Type: [NOTIFY] Notification Of Release (NOR)

**ACKNOWLEDGMENTS**

<input checked="" type="checkbox"/>	I acknowledge that I am authorized to submit notification of a release on behalf of my operator.
<input checked="" type="checkbox"/>	I acknowledge that upon submitting this application, I will be creating a new incident file (assigned to my operator) to track the notification(s) and corrective action(s) for a release, pursuant to NMAC 19.15.29.
<input checked="" type="checkbox"/>	I acknowledge that creating a new incident file will require my operator to file subsequent submission(s) of form "C-141, Application for administrative approval of a release notification and corrective action", pursuant to NMAC 19.15.29.
<input checked="" type="checkbox"/>	I hereby certify that the information given above is true and complete to the best of my knowledge and understand that pursuant to OCD rules and regulations all operators are required to report and/or file certain release notifications and perform corrective actions for releases which may endanger public health or the environment.
<input checked="" type="checkbox"/>	I acknowledge the fact that the acceptance of a C-141 report by the OCD does not relieve the operator of liability should their operations have failed to adequately investigate and remediate contamination that pose a threat to groundwater, surface water, human health or the environment.
<input checked="" type="checkbox"/>	I acknowledge the fact that, in addition, OCD acceptance of a C-141 report does not relieve the operator of responsibility for compliance with any other federal, state, or local laws and/or regulations.

Sante Fe Main Office  
Phone: (505) 476-3441

General Information  
Phone: (505) 629-6116

Online Phone Directory  
<https://www.emnrd.nm.gov/ocd/contact-us>

**State of New Mexico**  
**Energy, Minerals and Natural Resources**  
**Oil Conservation Division**  
**1220 S. St Francis Dr.**  
**Santa Fe, NM 87505**

CONDITIONS

Action 494036

**CONDITIONS**

Operator: CIMAREX ENERGY CO. OF COLORADO 6001 Deauville Blvd Midland, TX 79706	OGRID: 162683
	Action Number: 494036
	Action Type: [NOTIFY] Notification Of Release (NOR)

**CONDITIONS**

Created By	Condition	Condition Date
lluig	When submitting future reports regarding this release, please submit the calculations used or specific justification for the volumes reported on the initial C-141.	8/10/2025



CIMAREX ENERGY  
LAGUNA DEEP FEDERAL UNIT 8  
LEA, NM

12:12



[← Back](#)

Square/Rectangle Contained  
Spill with Vessel Displacement

Spill Name

L(Ft)    W(Ft)    D(In)    Oil %

55	6	3	%
----	---	---	---

Tank Size (Ft)      Tank Count

Tank OD	Tank Count
---------	------------



Oil Spill Total: 0.00

H<sub>2</sub>O Spill Total: 14.69

Total Bbls Spilled: 14.69

Total Gals Spilled: 617.10

**Add Section to Spill**



CIMAREX ENERGY  
LAGUNA DEEP FEDERAL UNIT 8  
LEA, NM



Sante Fe Main Office  
Phone: (505) 476-3441

General Information  
Phone: (505) 629-6116

Online Phone Directory  
<https://www.emnrd.nm.gov/ocd/contact-us>

**State of New Mexico**  
**Energy, Minerals and Natural Resources**  
**Oil Conservation Division**  
**1220 S. St Francis Dr.**  
**Santa Fe, NM 87505**

QUESTIONS

Action 494170

**QUESTIONS**

Operator: CIMAREX ENERGY CO. OF COLORADO 6001 Deauville Blvd Midland, TX 79706	OGRID: 162683
	Action Number: 494170
	Action Type: [C-141] Initial C-141 (C-141-v-Initial)

**QUESTIONS**

<b>Prerequisites</b>	
Incident ID (n#)	nAPP2522260310
Incident Name	NAPP2522260310 LAGUNA DEEP FEDERAL UNIT 8 @ 0
Incident Type	Produced Water Release
Incident Status	Initial C-141 Received
Incident Facility	[fAPP2202542873] LAGUNA DEEP FEDERAL UNIT 8

<b>Location of Release Source</b>	
<i>Please answer all the questions in this group.</i>	
Site Name	LAGUNA DEEP FEDERAL UNIT 8
Date Release Discovered	08/10/2025
Surface Owner	Private

<b>Incident Details</b>	
<i>Please answer all the questions in this group.</i>	
Incident Type	Produced Water Release
Did this release result in a fire or is the result of a fire	No
Did this release result in any injuries	No
Has this release reached or does it have a reasonable probability of reaching a watercourse	No
Has this release endangered or does it have a reasonable probability of endangering public health	No
Has this release substantially damaged or will it substantially damage property or the environment	No
Is this release of a volume that is or may with reasonable probability be detrimental to fresh water	No

<b>Nature and Volume of Release</b>	
<i>Material(s) released, please answer all that apply below. Any calculations or specific justifications for the volumes provided should be attached to the follow-up C-141 submission.</i>	
Crude Oil Released (bbls) Details	Not answered.
Produced Water Released (bbls) Details	Cause: Equipment Failure   Tank (Any)   Produced Water   Released: 14 BBL   Recovered: 13 BBL   Lost: 1 BBL.
Is the concentration of chloride in the produced water >10,000 mg/l	Yes
Condensate Released (bbls) Details	Not answered.
Natural Gas Vented (Mcf) Details	Not answered.
Natural Gas Flared (Mcf) Details	Not answered.
Other Released Details	Not answered.
Are there additional details for the questions above (i.e. any answer containing Other, Specify, Unknown, and/or Fire, or any negative lost amounts)	We experienced a minor reportable release at the Laguna Deep Unit 8 Facility. The lease operator arrived on location and discovered fluid within the gravel lined tank containment area. Further examination revealed the separator was carrying fluid over to the sales scrubber. This led to the sales scrubber discharging fluid into the oil tank, ultimately causing the tank to overflow into the containment. As a result, an estimated 14 barrels of produced water were released into the gravel-lined containment. A vacuum truck successfully recovered 13 barrels fluids from the containment. The impacted gravel will be removed, and a liner inspection scheduled in the coming weeks.

Sante Fe Main Office  
Phone: (505) 476-3441

General Information  
Phone: (505) 629-6116

Online Phone Directory  
<https://www.emnrd.nm.gov/ocd/contact-us>

**State of New Mexico**  
**Energy, Minerals and Natural Resources**  
**Oil Conservation Division**  
**1220 S. St Francis Dr.**  
**Santa Fe, NM 87505**

QUESTIONS, Page 2

Action 494170

**QUESTIONS (continued)**

Operator: CIMAREX ENERGY CO. OF COLORADO 6001 Deauville Blvd Midland, TX 79706	OGRID: 162683
	Action Number: 494170
	Action Type: [C-141] Initial C-141 (C-141-v-Initial)

**QUESTIONS**

<b>Nature and Volume of Release (continued)</b>	
Is this a gas only submission (i.e. only significant Mcf values reported)	<b>No, according to supplied volumes this does not appear to be a "gas only" report.</b>
Was this a major release as defined by Subsection A of 19.15.29.7 NMAC	<b>No</b>
Reasons why this would be considered a submission for a notification of a major release	<i>Unavailable.</i>
<i>With the implementation of the 19.15.27 NMAC (05/25/2021), venting and/or flaring of natural gas (i.e. gas only) are to be submitted on the C-129 form.</i>	

**Initial Response**

*The responsible party must undertake the following actions immediately unless they could create a safety hazard that would result in injury.*

The source of the release has been stopped	<b>True</b>
The impacted area has been secured to protect human health and the environment	<b>True</b>
Released materials have been contained via the use of berms or dikes, absorbent pads, or other containment devices	<b>True</b>
All free liquids and recoverable materials have been removed and managed appropriately	<b>True</b>
If all the actions described above have not been undertaken, explain why	<i>Not answered.</i>

*Per Paragraph (4) of Subsection B of 19.15.29.8 NMAC the responsible party may commence remediation immediately after discovery of a release. If remediation has begun, please prepare and attach a narrative of actions to date in the follow-up C-141 submission. If remedial efforts have been successfully completed or if the release occurred within a lined containment area (see Subparagraph (a) of Paragraph (5) of Subsection A of 19.15.29.11 NMAC), please prepare and attach all information needed for closure evaluation in the follow-up C-141 submission.*

I hereby certify that the information given above is true and complete to the best of my knowledge and understand that pursuant to OCD rules and regulations all operators are required to report and/or file certain release notifications and perform corrective actions for releases which may endanger public health or the environment. The acceptance of a C-141 report by the OCD does not relieve the operator of liability should their operations have failed to adequately investigate and remediate contamination that pose a threat to groundwater, surface water, human health or the environment. In addition, OCD acceptance of a C-141 report does not relieve the operator of responsibility for compliance with any other federal, state, or local laws and/or regulations.

I hereby agree and sign off to the above statement	Name: Laci Luig Title: ES&H Specialist Email: DL_PerminEnvironmental@coterra.com Date: 08/11/2025
--	--

Sante Fe Main Office  
Phone: (505) 476-3441

General Information  
Phone: (505) 629-6116

Online Phone Directory  
<https://www.emnrd.nm.gov/ocd/contact-us>

**State of New Mexico  
Energy, Minerals and Natural Resources  
Oil Conservation Division  
1220 S. St Francis Dr.  
Santa Fe, NM 87505**

QUESTIONS, Page 3

Action 494170

**QUESTIONS (continued)**

Operator: CIMAREX ENERGY CO. OF COLORADO 6001 Deauville Blvd Midland, TX 79706	OGRID: 162683
	Action Number: 494170
	Action Type: [C-141] Initial C-141 (C-141-v-Initial)

**QUESTIONS**

**Site Characterization**

Please answer all the questions in this group (only required when seeking remediation plan approval and beyond). This information must be provided to the appropriate district office no later than 90 days after the release discovery date.

What is the shallowest depth to groundwater beneath the area affected by the release in feet below ground surface (ft bgs)	Not answered.
What method was used to determine the depth to ground water	Not answered.
Did this release impact groundwater or surface water	Not answered.
<b>What is the minimum distance, between the closest lateral extents of the release and the following surface areas:</b>	
A continuously flowing watercourse or any other significant watercourse	Not answered.
Any lakebed, sinkhole, or playa lake (measured from the ordinary high-water mark)	Not answered.
An occupied permanent residence, school, hospital, institution, or church	Not answered.
A spring or a private domestic fresh water well used by less than five households for domestic or stock watering purposes	Not answered.
Any other fresh water well or spring	Not answered.
Incorporated municipal boundaries or a defined municipal fresh water well field	Not answered.
A wetland	Not answered.
A subsurface mine	Not answered.
An (non-karst) unstable area	Not answered.
Categorize the risk of this well / site being in a karst geology	Not answered.
A 100-year floodplain	Not answered.
Did the release impact areas not on an exploration, development, production, or storage site	Not answered.

**Remediation Plan**

Please answer all the questions that apply or are indicated. This information must be provided to the appropriate district office no later than 90 days after the release discovery date.

Requesting a remediation plan approval with this submission	No
<i>The OCD recognizes that proposed remediation measures may have to be minimally adjusted in accordance with the physical realities encountered during remediation. If the responsible party has any need to significantly deviate from the remediation plan proposed, then it should consult with the division to determine if another remediation plan submission is required.</i>	

Sante Fe Main Office  
Phone: (505) 476-3441

General Information  
Phone: (505) 629-6116

Online Phone Directory  
<https://www.emnrd.nm.gov/ocd/contact-us>

**State of New Mexico**  
**Energy, Minerals and Natural Resources**  
**Oil Conservation Division**  
**1220 S. St Francis Dr.**  
**Santa Fe, NM 87505**

CONDITIONS

Action 494170

**CONDITIONS**

Operator: CIMAREX ENERGY CO. OF COLORADO 6001 Deauville Blvd Midland, TX 79706	OGRID: 162683
	Action Number: 494170
	Action Type: [C-141] Initial C-141 (C-141-v-Initial)

**CONDITIONS**

Created By	Condition	Condition Date
michael.buchanan	None	8/11/2025

Sante Fe Main Office  
Phone: (505) 476-3441

General Information  
Phone: (505) 629-6116

Online Phone Directory  
<https://www.emnrd.nm.gov/ocd/contact-us>

**State of New Mexico  
Energy, Minerals and Natural Resources  
Oil Conservation Division  
1220 S. St Francis Dr.  
Santa Fe, NM 87505**

QUESTIONS

Action 552079

**QUESTIONS**

Operator: Coterra Energy Operating Co. 6001 Deauville Blvd Midland, TX 79706	OGRID: 215099
	Action Number: 552079
	Action Type: [NOTIFY] Notification Of Liner Inspection (C-141L)

**QUESTIONS**

<b>Prerequisites</b>	
Incident ID (n#)	nAPP2522260310
Incident Name	NAPP2522260310 LAGUNA DEEP FEDERAL UNIT 8 @ FAPP2202542873
Incident Type	Produced Water Release
Incident Status	Initial C-141 Approved
Incident Facility	[fAPP2202542873] LAGUNA DEEP FEDERAL UNIT 8

<b>Location of Release Source</b>	
Site Name	LAGUNA DEEP FEDERAL UNIT 8
Date Release Discovered	08/10/2025
Surface Owner	Private

<b>Liner Inspection Event Information</b>	
<i>Please answer all the questions in this group.</i>	
What is the liner inspection surface area in square feet	1,100
Have all the impacted materials been removed from the liner	Yes
Liner inspection date pursuant to Subparagraph (a) of Paragraph (5) of Subsection A of 19.15.29.11 NMAC	02/11/2026
Time liner inspection will commence	11:00 AM
Please provide any information necessary for observers to liner inspection	Inspecting cleared area of tank containment
Please provide any information necessary for navigation to liner inspection site	Coordinates: 32.62573, -103.62315

Sante Fe Main Office  
Phone: (505) 476-3441

General Information  
Phone: (505) 629-6116

Online Phone Directory  
<https://www.emnrd.nm.gov/ocd/contact-us>

**State of New Mexico**  
**Energy, Minerals and Natural Resources**  
**Oil Conservation Division**  
**1220 S. St Francis Dr.**  
**Santa Fe, NM 87505**

CONDITIONS

Action 552079

**CONDITIONS**

Operator: Coterra Energy Operating Co. 6001 Deauville Blvd Midland, TX 79706	OGRID: 215099
	Action Number: 552079
	Action Type: [NOTIFY] Notification Of Liner Inspection (C-141L)

**CONDITIONS**

Created By	Condition	Condition Date
lluig	Failure to notify the OCD of liner inspections including any changes in date/time per the requirements of 19.15.29.11.A(5)(a)(ii) NMAC, may result in the inspection not being accepted.	2/9/2026



# Liner Integrity Certification

The following serves to verify that the affected liner has been inspected and found to be in serviceable condition in accordance with 19.15.29.11 A.(5)(a)(i-ii) of the New Mexico Administrative Code.

Facility ID: fAPP2202542873

Date: 02/12/2026

Incident ID(s): nAPP2522260310

- Responsible Party has visually inspected the liner.
- Liner remains intact and was able to contain the leak in question.
- At least two business days' notice was given to the appropriate division district office before conducting the liner inspection.
- Photographs illustrating liner integrity are included.

Site map

CIMAREX ENERGY CO. OF COLORADO

Legend

- LAGUNA DEEP FEDERAL UNIT 8 (08.10.2025)

LAGUNA DEEP FEDERAL UNIT 8 (08.10.2025)



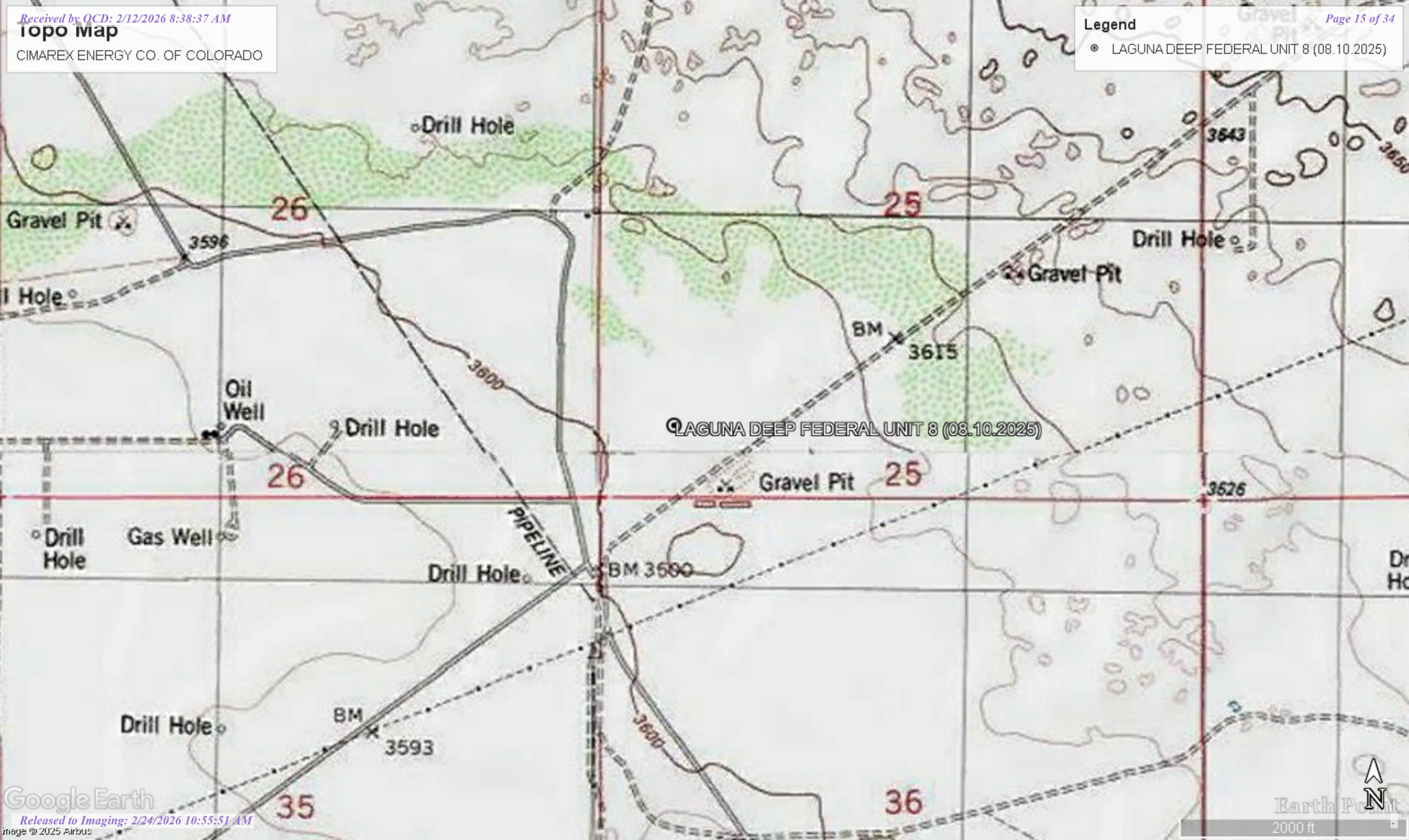
2000 ft

# Topo map

CIMAREX ENERGY CO. OF COLORADO

**Legend**



- LAGUNA DEEP FEDERAL UNIT 8 (08.10.2025)

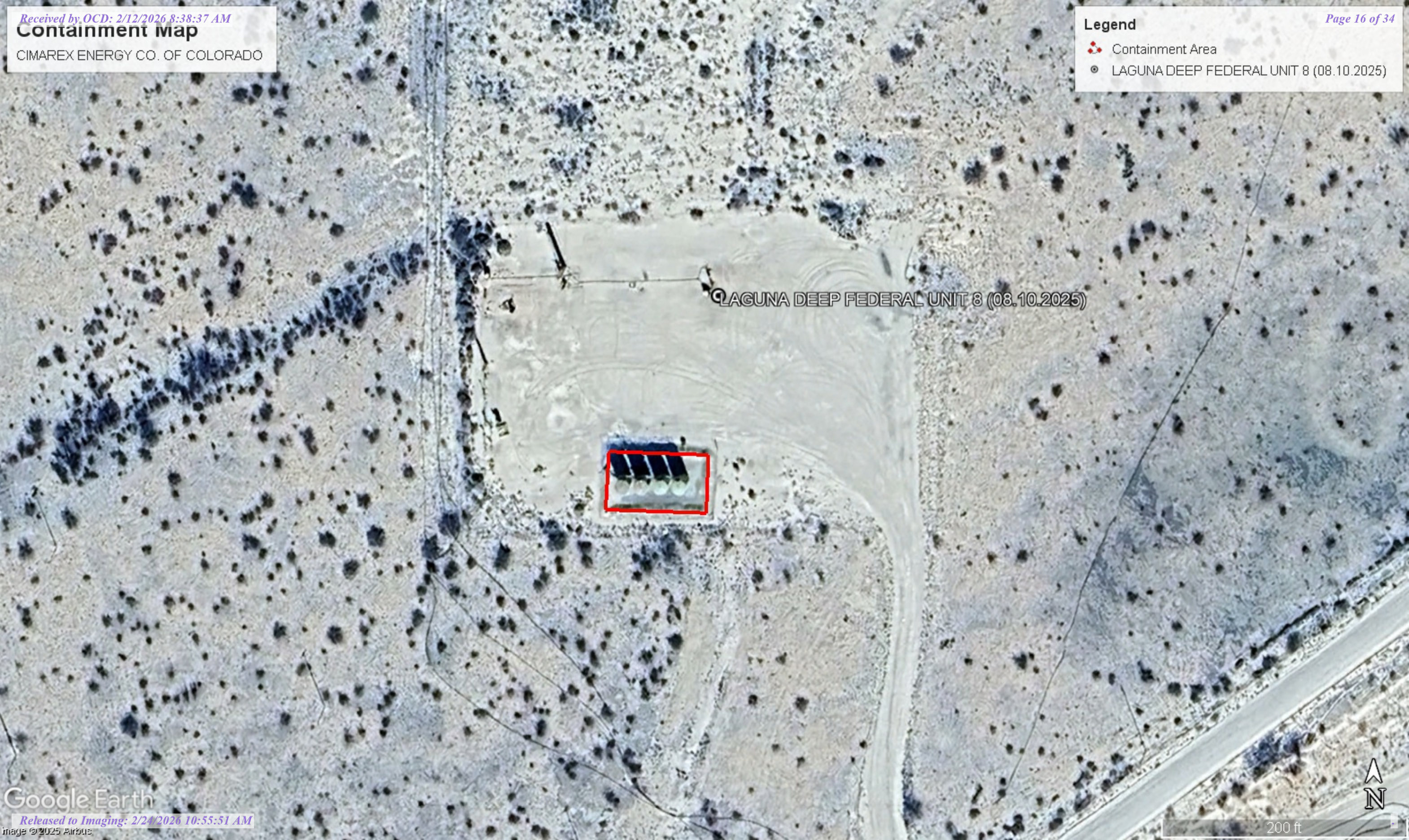


# Containment map

CIMAREX ENERGY CO. OF COLORADO

**Legend**

-  Containment Area
-  LAGUNA DEEP FEDERAL UNIT 8 (08.10.2025)



LAGUNA DEEP FEDERAL UNIT 8 (08.10.2025)



### Nearest water well

CIMAREX ENERGY CO. OF COLORADO

#### Legend

- 0.15 Miles
- 0.39 Miles
- 0.50 Mile Radius
- LAGUNA DEEP FEDERAL UNIT 8 (08.10.2025)
- USGS Water Well



### Low Karst

CIMAREX ENERGY CO. OF COLORADO

### Legend

- LAGUNA DEEP FEDERAL UNIT 8 (08.10.2025)
- Low

● LAGUNA DEEP FEDERAL UNIT 8 (08.10.2025)





# New Mexico Office of the State Engineer

## Water Column/Average Depth to Water

(A CLW##### in the POD suffix indicates the POD has been replaced & no longer serves a water right file.)

(R=POD has been replaced, O=orphaned, C=the file is closed)

(quarters are smallest to largest)

(meters)

(In feet)

POD Number	Code	Sub basin	County	Q64	Q16	Q4	Sec	Tws	Range	X	Y	Map	Distance	Well Depth	Depth Water	Water Column
<a href="#">CP 00658 POD1</a>		CP	LE	NE	NE	SE	26	19S	33E	628857.0	3611125.0 *	●	580	100		
<a href="#">CP 00748 POD1</a>		CP	LE			NE	01	20S	33E	630197.0	3608428.0 *	●	2434			
<a href="#">CP 01865 POD1</a>		CP	LE	SE	SW	NE	02	20S	33E	628390.1	3608155.4	●	2596	105	0	105
<a href="#">L 07213</a>		L	LE	SE	NW	SE	31	19S	34E	631700.0	3609351.0 *	●	2840	160	110	50
<a href="#">CP 01865 POD2</a>		CP	LE	SW	NW	SW	02	20S	33E	627454.2	3607733.7	●	3366	105	0	105

Average Depth to Water: **36 feet**

Minimum Depth: **0 feet**

Maximum Depth: **110 feet**

**Record Count:** 5

**UTM Filters (in meters):**

**Easting:** 629165.13

**Northing:** 3610633.41

**Radius:** 4000

\* UTM location was derived from PLSS - see Help

The data is furnished by the NMOSE/ISC and is accepted by the recipient with the expressed understanding that the OSE/ISC make no warranties, expressed or implied, concerning the accuracy, completeness, reliability, usability, or suitability for any particular purpose of the data.



USGS Home  
Contact USGS  
Search USGS

National Water Information System: Web Interface

USGS Water Resources

Data Category:  Geographic Area:

Click to hide News Bulletins

- Explore the [NEW USGS National Water Dashboard](#) interactive map to access real-time water data from over 13,500 stations nationwide.

Groundwater levels for New Mexico

Click to hide state-specific text

**!** Important: [Next Generation Monitoring Location Page](#)

**Search Results -- 1 sites found**

Agency code = usgs  
site\_no list =  
• 323737103373101

Minimum number of levels = 1

[Save file of selected sites](#) to local disk for future upload

**USGS 323737103373101 19S.33E.26.422221**

Lea County, New Mexico

Latitude 32°37'37", Longitude 103°37'31" NAD27

Land-surface elevation 3,604 feet above NAVD88

The depth of the well is 101 feet below land surface.

This well is completed in the Other aquifers (N9999OTHER) national aquifer.

This well is completed in the Alluvium, Bolson Deposits and Other Surface Deposits (110AVMB) local aquifer.

**Output formats**

<a href="#">Table of data</a>
<a href="#">Tab-separated data</a>
<a href="#">Graph of data</a>
<a href="#">Reselect period</a>

Date	Time	? Water-level date-time accuracy	? Parameter code	Water level, feet below land surface	Water level, feet above specific vertical datum	Referenced vertical datum	? Status	? Method of measurement	? Measuring agency	? Source of measurement	? Water-level approval status
1954-07-01			D	62610	3509.63	NGVD29	P	Z			A
1954-07-01			D	62611	3511.19	NAVD88	P	Z			A
1954-07-01			D	72019	92.81		P	Z			A
1965-11-17			D	62610	3510.96	NGVD29	1	Z			A
1965-11-17			D	62611	3512.52	NAVD88	1	Z			A
1965-11-17			D	72019	91.48		1	Z			A

**Explanation**

Section	Code	Description
Water-level date-time accuracy	D	Date is accurate to the Day
Parameter code	62610	Groundwater level above NGVD 1929, feet
<a href="#">Parameter code</a>	62611	Groundwater level above NAVD 1988, feet
Parameter code	72019	Depth to water level, feet below land surface
<a href="#">Referenced vertical datum</a>	NAVD88	North American Vertical Datum of 1988
Referenced vertical datum	NGVD29	National Geodetic Vertical Datum of 1929
Status	1	Static
Status	P	Pumping
<a href="#">Method of measurement</a>	Z	Other.
Measuring agency		Not determined
<a href="#">Source of measurement</a>		Not determined
Water-level approval status	A	Approved for publication -- Processing and review completed.

8/11/25, 6:01 PM

- [Questions or Comments](#)
- [Help](#)
- [Data Tips](#)
- [Explanation of terms](#)
- [Subscribe for system changes](#)

[Accessibility](#)   [FOIA](#)   [Privacy](#)   [Policies and Notices](#)

[U.S. Department of the Interior](#) | [U.S. Geological Survey](#)

**Title: Groundwater for New Mexico: Water Levels**

**URL: <https://nwis.waterdata.usgs.gov/nm/nwis/gwlevels?>**

Page Contact Information: [New Mexico Water Data Maintainer](#)

Page Last Modified: 2025-08-11 19:00:44 EDT

0.37 0.3 nadww01



Date	Time	? Water-level date-time accuracy	? Parameter code	Water level, feet below land surface	Water level, feet above specific vertical datum	Referenced vertical datum	? Status	? Meth meas
						Groundwater	New Mexico	GO

Click to hide News Bulletins

- Explore the [NEW USGS National Water Dashboard](#) interactive map to access real-time water data from over 13,500 stations nationwide.

Groundwater levels for New Mexico

Click to hide state-specific text

**i** Important: [Next Generation Monitoring Location Page](#)

**Search Results -- 1 sites found**

Agency code = usgs  
 site\_no list =  
 • 323737103373001

Minimum number of levels = 1  
[Save file of selected sites](#) to local disk for future upload

**USGS 323737103373001 19S.33E.26.42221**

Lea County, New Mexico  
 Latitude 32°37'51", Longitude 103°37'33" NAD27  
 Land-surface elevation 3,608.00 feet above NGVD29  
 The depth of the well is 100 feet below land surface.  
 This well is completed in the Other aquifers (N9999OTHER) national aquifer.  
 This well is completed in the Alluvium, Bolson Deposits and Other Surface Deposits (110AVMB) local aquifer.

**Output formats**

- [Table of data](#)
- [Tab-separated data](#)
- [Graph of data](#)
- [Reselect period](#)

Date	Time	? Water-level date-time accuracy	? Parameter code	Water level, feet below land surface	Water level, feet above specific vertical datum	Referenced vertical datum	? Status	? Method of measurement	? Measuring agency	? Source of measurement	? Water-level approval status
1968-03-14			D 62610		3517.52	NGVD29	1	Z			A
1968-03-14			D 62611		3519.08	NAVD88	1	Z			A
1968-03-14			D 72019	90.48			1	Z			A
1971-01-28			D 62610		3517.11	NGVD29	1	Z			A
1971-01-28			D 62611		3518.67	NAVD88	1	Z			A
1971-01-28			D 72019	90.89			1	Z			A
1976-12-15			D 62610		3517.14	NGVD29	1	Z			A
1976-12-15			D 62611		3518.70	NAVD88	1	Z			A
1976-12-15			D 72019	90.86			1	Z			A
1981-01-29			D 62610		3515.03	NGVD29	1	Z			A
1981-01-29			D 62611		3516.59	NAVD88	1	Z			A
1981-01-29			D 72019	92.97			1	Z			A
1986-03-25			D 62610		3517.35	NGVD29	1	Z			A
1986-03-25			D 62611		3518.91	NAVD88	1	Z			A
1986-03-25			D 72019	90.65			1	Z			A
1991-05-23			D 62610		3519.88	NGVD29	1	Z			A
1991-05-23			D 62611		3521.44	NAVD88	1	Z			A
1991-05-23			D 72019	88.12			1	Z			A
1996-01-30			D 62610		3523.44	NGVD29	1	S			A
1996-01-30			D 62611		3525.00	NAVD88	1	S			A
1996-01-30			D 72019	84.56			1	S			A

Explanation

Section	Code	Description
---------	------	-------------

8/11/25, 6:03 PM

Date	Time	? Water-level date-time accuracy	? Parameter code	Water level, feet below land surface	Water level, feet above specific vertical datum	Referenced vertical datum	? Status	? Methc measi
Referenced vertical datum			NAVD88	North American Vertical Datum of 1988				
Referenced vertical datum			NGVD29	National Geodetic Vertical Datum of 1929				
Status			1	Static				
Method of measurement			S	Steel-tape measurement.				
Method of measurement			Z	Other.				
Measuring agency				Not determined				
Source of measurement				Not determined				
Water-level approval status			A	Approved for publication -- Processing and review completed.				

[Questions or Comments](#)

[Help](#)

[Data Tips](#)

[Explanation of terms](#)

[Subscribe for system changes](#)

[Accessibility](#)   [FOIA](#)   [Privacy](#)   [Policies and Notices](#)

[U.S. Department of the Interior](#) | [U.S. Geological Survey](#)

**Title: Groundwater for New Mexico: Water Levels**

**URL: <https://nwis.waterdata.usgs.gov/nm/nwis/gwlevels?>**

Page Contact Information: [New Mexico Water Data Maintainer](#)

Page Last Modified: 2025-08-11 19:02:40 EDT

0.36 0.31 nadww01



# LAGUNA DEEP FEDERAL UNIT 8 (08.10.2025)

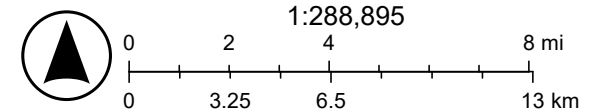


8/11/2025

USA Flood Hazard Areas

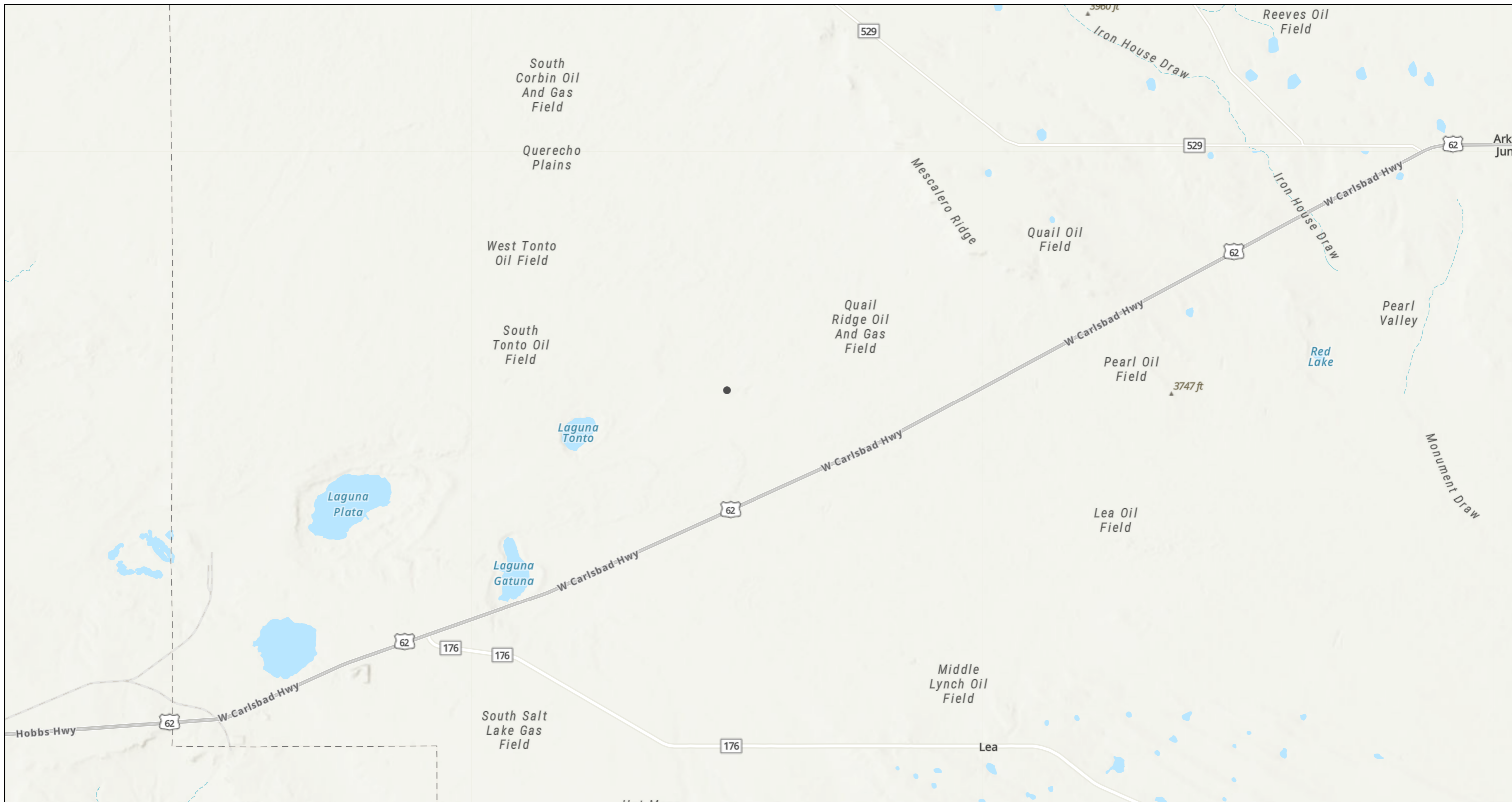
 1% Annual Chance Flood Hazard

World\_Hillshade



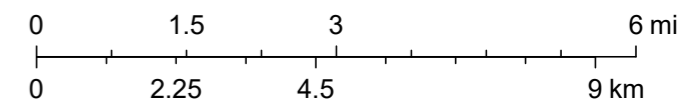
Esri, NASA, NGA, USGS, Sources: Esri, TomTom, Garmin, FAO, NOAA, USGS, (c) OpenStreetMap contributors, and the GIS User Community

# LAGUNA DEEP FEDERAL UNIT 8 (08.10.2025)



8/11/2025, 5:57:30 PM

1:144,448



Esri, NASA, NGA, USGS, Sources: Esri, TomTom, Garmin, FAO, NOAA, USGS, © OpenStreetMap contributors, and the GIS User Community

# PHOTOGRAPHIC LOG

## Coterra Energy Operating Co

### Photograph No. 1

**Facility:** LAGUNA DEEP FEDERAL UNIT 8  
(08.10.2025)

**County:** Lea County, New Mexico

**Description:**

View West of the gravel removed that was saturated from the release.



### Photograph No. 2

**Facility:** LAGUNA DEEP FEDERAL UNIT 8  
(08.10.2025)

**County:** Lea County, New Mexico

**Description:**

View North of the gravel removed that was saturated from the release.



### Photograph No. 3

**Facility:** LAGUNA DEEP FEDERAL UNIT 8  
(08.10.2025)

**County:** Lea County, New Mexico

**Description:**

View West of the gravel removed that was saturated from the release.



# PHOTOGRAPHIC LOG

## Coterra Energy Operating Co

### Photograph No. 4

**Facility:** LAGUNA DEEP FEDERAL UNIT 8  
(08.10.2025)

**County:** Lea County, New Mexico

**Description:**

View West of the gravel removed that was saturated from the release.



### Photograph No. 5

**Facility:** LAGUNA DEEP FEDERAL UNIT 8  
(08.10.2025)

**County:** Lea County, New Mexico

**Description:**

View East of the gravel removed that was saturated from the release.



### Photograph No. 6

**Facility:** LAGUNA DEEP FEDERAL UNIT 8  
(08.10.2025)

**County:** Lea County, New Mexico

**Description:**

View East of the gravel removed that was saturated from the release.



# PHOTOGRAPHIC LOG

Coterra Energy Operating Co

**Photograph No. 7**

**Facility:** LAGUNA DEEP FEDERAL UNIT 8  
(08.10.2025)

**County:** Lea County, New Mexico

**Description:**  
View South of the gravel removed that was saturated from the release.



Sante Fe Main Office  
Phone: (505) 476-3441

General Information  
Phone: (505) 629-6116

Online Phone Directory  
<https://www.emnrd.nm.gov/ocd/contact-us>

**State of New Mexico**  
**Energy, Minerals and Natural Resources**  
**Oil Conservation Division**  
**1220 S. St Francis Dr.**  
**Santa Fe, NM 87505**

QUESTIONS

Action 553250

**QUESTIONS**

Operator: Coterra Energy Operating Co. 6001 Deauville Blvd Midland, TX 79706	OGRID: 215099
	Action Number: 553250
	Action Type: [C-141] Remediation Closure Request C-141 (C-141-v-Closure)

**QUESTIONS**

<b>Prerequisites</b>	
Incident ID (n#)	nAPP2522260310
Incident Name	NAPP2522260310 LAGUNA DEEP FEDERAL UNIT 8 @ FAPP2202542873
Incident Type	Produced Water Release
Incident Status	Remediation Closure Report Received
Incident Facility	[fAPP2202542873] LAGUNA DEEP FEDERAL UNIT 8

<b>Location of Release Source</b>	
<i>Please answer all the questions in this group.</i>	
Site Name	LAGUNA DEEP FEDERAL UNIT 8
Date Release Discovered	08/10/2025
Surface Owner	Private

<b>Incident Details</b>	
<i>Please answer all the questions in this group.</i>	
Incident Type	Produced Water Release
Did this release result in a fire or is the result of a fire	No
Did this release result in any injuries	No
Has this release reached or does it have a reasonable probability of reaching a watercourse	No
Has this release endangered or does it have a reasonable probability of endangering public health	No
Has this release substantially damaged or will it substantially damage property or the environment	No
Is this release of a volume that is or may with reasonable probability be detrimental to fresh water	No

<b>Nature and Volume of Release</b>	
<i>Material(s) released, please answer all that apply below. Any calculations or specific justifications for the volumes provided should be attached to the follow-up C-141 submission.</i>	
Crude Oil Released (bbls) Details	Not answered.
Produced Water Released (bbls) Details	Cause: Equipment Failure   Tank (Any)   Produced Water   Released: 14 BBL   Recovered: 13 BBL   Lost: 1 BBL.
Is the concentration of chloride in the produced water >10,000 mg/l	Yes
Condensate Released (bbls) Details	Not answered.
Natural Gas Vented (Mcf) Details	Not answered.
Natural Gas Flared (Mcf) Details	Not answered.
Other Released Details	Not answered.
Are there additional details for the questions above (i.e. any answer containing Other, Specify, Unknown, and/or Fire, or any negative lost amounts)	We experienced a minor reportable release at the Laguna Deep Unit 8 Facility. The lease operator arrived on location and discovered fluid within the gravel lined tank containment area. Further examination revealed the separator was carrying fluid over to the sales scrubber. This led to the sales scrubber discharging fluid into the oil tank, ultimately causing the tank to overflow into the containment. As a result, an estimated 14 barrels of produced water were released into the gravel-lined containment. A vacuum truck successfully recovered 13 barrels fluids from the containment. The impacted gravel will be removed, and a liner inspection scheduled in the coming weeks.

Sante Fe Main Office  
Phone: (505) 476-3441

General Information  
Phone: (505) 629-6116

Online Phone Directory  
<https://www.emnrd.nm.gov/ocd/contact-us>

**State of New Mexico**  
**Energy, Minerals and Natural Resources**  
**Oil Conservation Division**  
**1220 S. St Francis Dr.**  
**Santa Fe, NM 87505**

QUESTIONS, Page 2

Action 553250

**QUESTIONS (continued)**

Operator: Coterra Energy Operating Co. 6001 Deauville Blvd Midland, TX 79706	OGRID: 215099
	Action Number: 553250
	Action Type: [C-141] Remediation Closure Request C-141 (C-141-v-Closure)

**QUESTIONS**

<b>Nature and Volume of Release (continued)</b>	
Is this a gas only submission (i.e. only significant Mcf values reported)	<b>No, according to supplied volumes this does not appear to be a "gas only" report.</b>
Was this a major release as defined by Subsection A of 19.15.29.7 NMAC	<b>No</b>
Reasons why this would be considered a submission for a notification of a major release	<i>Unavailable.</i>
<i>With the implementation of the 19.15.27 NMAC (05/25/2021), venting and/or flaring of natural gas (i.e. gas only) are to be submitted on the C-129 form.</i>	

**Initial Response**

*The responsible party must undertake the following actions immediately unless they could create a safety hazard that would result in injury.*

The source of the release has been stopped	<b>True</b>
The impacted area has been secured to protect human health and the environment	<b>True</b>
Released materials have been contained via the use of berms or dikes, absorbent pads, or other containment devices	<b>True</b>
All free liquids and recoverable materials have been removed and managed appropriately	<b>True</b>
If all the actions described above have not been undertaken, explain why	<i>Not answered.</i>

*Per Paragraph (4) of Subsection B of 19.15.29.8 NMAC the responsible party may commence remediation immediately after discovery of a release. If remediation has begun, please prepare and attach a narrative of actions to date in the follow-up C-141 submission. If remedial efforts have been successfully completed or if the release occurred within a lined containment area (see Subparagraph (a) of Paragraph (5) of Subsection A of 19.15.29.11 NMAC), please prepare and attach all information needed for closure evaluation in the follow-up C-141 submission.*

I hereby certify that the information given above is true and complete to the best of my knowledge and understand that pursuant to OCD rules and regulations all operators are required to report and/or file certain release notifications and perform corrective actions for releases which may endanger public health or the environment. The acceptance of a C-141 report by the OCD does not relieve the operator of liability should their operations have failed to adequately investigate and remediate contamination that pose a threat to groundwater, surface water, human health or the environment. In addition, OCD acceptance of a C-141 report does not relieve the operator of responsibility for compliance with any other federal, state, or local laws and/or regulations.

I hereby agree and sign off to the above statement	Name: Ashton Thielke Title: EHS Specialist Email: Ashton.Thielke@coterra.com Date: 02/12/2026
--	--

Sante Fe Main Office  
Phone: (505) 476-3441

General Information  
Phone: (505) 629-6116

Online Phone Directory  
<https://www.emnrd.nm.gov/ocd/contact-us>

**State of New Mexico**  
**Energy, Minerals and Natural Resources**  
**Oil Conservation Division**  
**1220 S. St Francis Dr.**  
**Santa Fe, NM 87505**

QUESTIONS, Page 3

Action 553250

**QUESTIONS (continued)**

Operator: Coterra Energy Operating Co. 6001 Deauville Blvd Midland, TX 79706	OGRID: 215099
	Action Number: 553250
	Action Type: [C-141] Remediation Closure Request C-141 (C-141-v-Closure)

**QUESTIONS**

**Site Characterization**

*Please answer all the questions in this group (only required when seeking remediation plan approval and beyond). This information must be provided to the appropriate district office no later than 90 days after the release discovery date.*

What is the shallowest depth to groundwater beneath the area affected by the release in feet below ground surface (ft bgs)	Between 75 and 100 (ft.)
What method was used to determine the depth to ground water	U.S. Geological Survey
Did this release impact groundwater or surface water	No
<b>What is the minimum distance, between the closest lateral extents of the release and the following surface areas:</b>	
A continuously flowing watercourse or any other significant watercourse	Greater than 5 (mi.)
Any lakebed, sinkhole, or playa lake (measured from the ordinary high-water mark)	Between 1 and 5 (mi.)
An occupied permanent residence, school, hospital, institution, or church	Between 1000 (ft.) and ½ (mi.)
A spring or a private domestic fresh water well used by less than five households for domestic or stock watering purposes	Between 500 and 1000 (ft.)
Any other fresh water well or spring	Between 1000 (ft.) and ½ (mi.)
Incorporated municipal boundaries or a defined municipal fresh water well field	Greater than 5 (mi.)
A wetland	Between 1 and 5 (mi.)
A subsurface mine	Greater than 5 (mi.)
An (non-karst) unstable area	Greater than 5 (mi.)
Categorize the risk of this well / site being in a karst geology	Low
A 100-year floodplain	Between 1 and 5 (mi.)
Did the release impact areas not on an exploration, development, production, or storage site	No

**Remediation Plan**

*Please answer all the questions that apply or are indicated. This information must be provided to the appropriate district office no later than 90 days after the release discovery date.*

Requesting a remediation plan approval with this submission	Yes
<i>Attach a comprehensive report demonstrating the lateral and vertical extents of soil contamination associated with the release have been determined, pursuant to 19.15.29.11 NMAC and 19.15.29.13 NMAC.</i>	
Have the lateral and vertical extents of contamination been fully delineated	Yes
Was this release entirely contained within a lined containment area	Yes
<i>Per Subsection B of 19.15.29.11 NMAC unless the site characterization report includes completed efforts at remediation, the report must include a proposed remediation plan in accordance with 19.15.29.12 NMAC, which includes the anticipated timelines for beginning and completing the remediation.</i>	
On what estimated date will the remediation commence	02/03/2026
On what date will (or did) the final sampling or liner inspection occur	02/11/2026
On what date will (or was) the remediation complete(d)	02/04/2026
What is the estimated surface area (in square feet) that will be remediated	1100
What is the estimated volume (in cubic yards) that will be remediated	5

*These estimated dates and measurements are recognized to be the best guess or calculation at the time of submission and may (be) change(d) over time as more remediation efforts are completed. The OCD recognizes that proposed remediation measures may have to be minimally adjusted in accordance with the physical realities encountered during remediation. If the responsible party has any need to significantly deviate from the remediation plan proposed, then it should consult with the division to determine if another remediation plan submission is required.*

Sante Fe Main Office  
Phone: (505) 476-3441

General Information  
Phone: (505) 629-6116

Online Phone Directory  
<https://www.emnrd.nm.gov/ocd/contact-us>

**State of New Mexico**  
**Energy, Minerals and Natural Resources**  
**Oil Conservation Division**  
**1220 S. St Francis Dr.**  
**Santa Fe, NM 87505**

QUESTIONS, Page 4

Action 553250

**QUESTIONS (continued)**

Operator: Coterra Energy Operating Co. 6001 Deauville Blvd Midland, TX 79706	OGRID: 215099
	Action Number: 553250
	Action Type: [C-141] Remediation Closure Request C-141 (C-141-v-Closure)

**QUESTIONS**

<b>Remediation Plan (continued)</b>	
<i>Please answer all the questions that apply or are indicated. This information must be provided to the appropriate district office no later than 90 days after the release discovery date.</i>	
<b>This remediation will (or is expected to) utilize the following processes to remediate / reduce contaminants:</b>	
<i>(Select all answers below that apply.)</i>	
Is (or was) there affected material present needing to be removed	Yes
Is (or was) there a power wash of the lined containment area (to be) performed	Yes
OTHER (Non-listed remedial process)	Not answered.
<i>Per Subsection B of 19.15.29.11 NMAC unless the site characterization report includes completed efforts at remediation, the report must include a proposed remediation plan in accordance with 19.15.29.12 NMAC, which includes the anticipated timelines for beginning and completing the remediation.</i>	
I hereby certify that the information given above is true and complete to the best of my knowledge and understand that pursuant to OCD rules and regulations all operators are required to report and/or file certain release notifications and perform corrective actions for releases which may endanger public health or the environment. The acceptance of a C-141 report by the OCD does not relieve the operator of liability should their operations have failed to adequately investigate and remediate contamination that pose a threat to groundwater, surface water, human health or the environment. In addition, OCD acceptance of a C-141 report does not relieve the operator of responsibility for compliance with any other federal, state, or local laws and/or regulations.	
I hereby agree and sign off to the above statement	Name: Ashton Thielke Title: EHS Specialist Email: Ashton.Thielke@coterra.com Date: 02/12/2026
<i>The OCD recognizes that proposed remediation measures may have to be minimally adjusted in accordance with the physical realities encountered during remediation. If the responsible party has any need to significantly deviate from the remediation plan proposed, then it should consult with the division to determine if another remediation plan submission is required.</i>	

Sante Fe Main Office  
Phone: (505) 476-3441

General Information  
Phone: (505) 629-6116

Online Phone Directory  
<https://www.emnrd.nm.gov/ocd/contact-us>

**State of New Mexico**  
**Energy, Minerals and Natural Resources**  
**Oil Conservation Division**  
**1220 S. St Francis Dr.**  
**Santa Fe, NM 87505**

QUESTIONS, Page 6

Action 553250

**QUESTIONS (continued)**

Operator: Coterra Energy Operating Co. 6001 Deauville Blvd Midland, TX 79706	OGRID: 215099
	Action Number: 553250
	Action Type: [C-141] Remediation Closure Request C-141 (C-141-v-Closure)

**QUESTIONS**

<b>Liner Inspection Information</b>	
Last liner inspection notification (C-141L) recorded	552079
Liner inspection date pursuant to Subparagraph (a) of Paragraph (5) of Subsection A of 19.15.29.11 NMAC	02/11/2026
Was all the impacted materials removed from the liner	Yes
What was the liner inspection surface area in square feet	1100

<b>Remediation Closure Request</b>	
<i>Only answer the questions in this group if seeking remediation closure for this release because all remediation steps have been completed.</i>	
Requesting a remediation closure approval with this submission	Yes
Have the lateral and vertical extents of contamination been fully delineated	Yes
Was this release entirely contained within a lined containment area	Yes
What was the total surface area (in square feet) remediated	1100
What was the total volume (cubic yards) remediated	5
Summarize any additional remediation activities not included by answers (above)	All affected gravel from the release was removed and inspected. Approx. 5 cubic yards of material were removed from the area.

*The responsible party must attach information demonstrating they have complied with all applicable closure requirements and any conditions or directives of the OCD. This demonstration should be in the form of a comprehensive report (in .pdf format) including a scaled site map, sampling diagrams, relevant field notes, photographs of any excavation prior to backfilling, laboratory data including chain of custody documents of final sampling, and a narrative of the remedial activities. Refer to 19.15.29.12 NMAC.*

I hereby certify that the information given above is true and complete to the best of my knowledge and understand that pursuant to OCD rules and regulations all operators are required to report and/or file certain release notifications and perform corrective actions for releases which may endanger public health or the environment. The acceptance of a C-141 report by the OCD does not relieve the operator of liability should their operations have failed to adequately investigate and remediate contamination that pose a threat to groundwater, surface water, human health or the environment. In addition, OCD acceptance of a C-141 report does not relieve the operator of responsibility for compliance with any other federal, state, or local laws and/or regulations. The responsible party acknowledges they must substantially restore, reclaim, and re-vegetate the impacted surface area to the conditions that existed prior to the release or their final land use in accordance with 19.15.29.13 NMAC including notification to the OCD when reclamation and re-vegetation are complete.

I hereby agree and sign off to the above statement	Name: Ashton Thielke Title: EHS Specialist Email: Ashton.Thielke@coterra.com Date: 02/12/2026
--	--

Sante Fe Main Office  
Phone: (505) 476-3441

General Information  
Phone: (505) 629-6116

Online Phone Directory  
<https://www.emnrd.nm.gov/ocd/contact-us>

**State of New Mexico**  
**Energy, Minerals and Natural Resources**  
**Oil Conservation Division**  
**1220 S. St Francis Dr.**  
**Santa Fe, NM 87505**

CONDITIONS

Action 553250

**CONDITIONS**

Operator: Coterra Energy Operating Co. 6001 Deauville Blvd Midland, TX 79706	OGRID: 215099
	Action Number: 553250
	Action Type: [C-141] Remediation Closure Request C-141 (C-141-v-Closure)

**CONDITIONS**

Created By	Condition	Condition Date
michael.buchanan	Liner inspection and closure approved.	2/24/2026