



## SITE INFORMATION

---

**Closure Report**  
**Driver 14 State #502H**  
**Incident ID: nAPP2528652444**  
**Lea County, New Mexico**  
**Unit D Sec 14 T23S R33E**  
**32.311543°, -103.547721°**

### **Crude Oil & Produced Water Release**

**Point of Release: Tank Overflow**

**Release Date: 10/11/2025**

**Volume Released: 1 Barrel of Crude Oil & 6 Barrels of Produced Water**

**Volume Recovered: 1 Barrel of Crude Oil & 4 Barrels of Produced Water**

**CARMONA RESOURCES**



**Prepared for:**  
**EOG Resources**  
**5509 Champions Drive**  
**Midland, TX 79706**

**Prepared by:**  
**Carmona Resources, LLC**  
**310 West Wall Street**  
**Suite 500**  
**Midland, Texas 79701**

310 West Wall Street, Suite 500  
Midland TX, 79701  
432.813.1992

**TABLE OF CONTENTS**

---

**1.0 SITE INFORMATION AND BACKGROUND**

**2.0 SITE CHARACTERIZATION AND GROUNDWATER**

**3.0 NMAC REGULATORY CRITERIA**

**4.0 SITE ASSESSMENT ACTIVITIES**

**5.0 REMEDIATION ACTIVITIES**

**6.0 CONCLUSIONS**

**FIGURES**

**FIGURE 1                      OVERVIEW                      FIGURE 2                      TOPOGRAPHIC**

**FIGURE 3                      SAMPLE LOCATION                      FIGURE 4                      EXCAVATION**

**APPENDICES**

**APPENDIX A    TABLES**

**APPENDIX B    PHOTOS**

**APPENDIX C    N.O.R. AND NMOCD CORRESPONDENCE**

**APPENDIX D    SITE CHARACTERIZATION AND GROUNDWATER**

**APPENDIX E    LABORATORY REPORTS**



January 6, 2026

New Mexico Oil Conservation Division  
1220 South St, Francis Drive  
Santa Fe, NM 87505

**Re: Closure Report  
Driver 14 State #502H  
EOG Resources, Inc  
Incident # nAPP2528652444  
Site Location: Unit D, S14, T23S, R33E  
(Lat 32.311543°, Long -103.547721°)  
Lea County, New Mexico**

To whom it may concern:

On behalf of EOG Resources, Inc. (EOG), Carmona Resources, LLC has prepared this letter to document site activities for the Driver 14 State #502H. The site is located at 32.311543°, -103.547721° within Unit D, S14, T23S, R33E, in Lea County, New Mexico (Figures 1 and 2).

### **1.0 Site Information and Background**

Based on the Notification of Release obtained from the New Mexico Oil Conservation Division (NMOCD), the release was discovered on October 11, 2025, caused by a tank overflow. It resulted in the release of one (1) barrel of crude oil and six (6) barrels of produced water, with one (1) barrel of crude oil and four (4) barrels of produced water recovered. Refer to Figure 3. The Notice of Release and C-141 forms are attached in Appendix C.

### **2.0 Site Characterization and Groundwater**

The site is located within a low karst area. Based on a review of the New Mexico Office of State Engineers and USGS databases, one known water source is within a 0.50-mile radius of the location. The nearest identified well is located approximately 0.15 miles Southwest of the site in S14, T23S, R33E, and was drilled in 2012. The well has a reported depth to groundwater of 81' below ground surface (ft bgs). A copy of the associated Summary report is attached in Appendix D.

### **3.0 NMAC Regulatory Criteria**

Per the NMOCD regulatory criteria established in 19.15.29.12 NMAC, the following criteria were utilized in assessing the site.

- Benzene: 10 milligrams per kilogram (mg/kg).
- Benzene, toluene, ethylbenzene, and total xylenes (BTEX): 50 mg/kg.
- TPH: 2,500 mg/kg (GRO + DRO + MRO).
- TPH: 1,000 mg/kg (GRO + DR0).
- Chloride: 10,000 mg/kg.

### **4.0 Site Assessment Activities**

#### **Initial Assessment**

On October 20, 2025, Carmona Resources, LLC performed site assessment activities to evaluate soil impacts stemming from the release. A total of two (2) sample points (S-1 through S-2) and four (4) horizontal samples (H-1 through H-4) were advanced to depths ranging from the surface to 4' bgs inside and surrounding the release

310 West Wall Street, Suite 500  
Midland, Texas 79701  
432.813.1992



area to assess the vertical and horizontal extent of the contamination. See Figure 3 for the sample locations. For chemical analysis, the soil samples were collected and placed directly into laboratory-provided sample containers, stored on ice, and transported under the proper chain-of-custody protocol to Cardinal Laboratories in Hobbs, New Mexico. The samples were analyzed for total petroleum hydrocarbons (TPH) by EPA method 8015, modified benzene, toluene, ethylbenzene, and xylenes (BTEX) by EPA Method 8021B, and chloride by EPA method 4500. The laboratory reports, including analytical methods, results, and chain-of-custody documents, are attached in Appendix E.

#### Vertical Delineation

Vertical delineation was achieved for S-1 and S-2. Refer to Table 1 for the analytical results.

#### Horizontal Delineation

All areas were below the regulatory limits for benzene, total BTEX, TPH, and chloride concentrations. Refer to Table 1.

### **5.0 Remediation Activities**

Carmona Resources personnel were on site to guide the remediation activities, collect confirmation samples, and document backfill activities. Before collecting composite confirmation samples, the NMOCD division office was notified via the NMOCD Portal on December 11, 2025, per Subsection D of 19.15.29.12 NMAC. See Appendix C. A total of three (3) floor confirmation samples were collected (CS-1 through CS-3), and six (6) sidewall samples (SW-1 through SW-6) were collected every 200 square feet to ensure the proper removal of the contaminated soils. All collected samples were analyzed for TPH analysis by EPA method 8015 modified, BTEX by EPA Method 8021B, and chloride by EPA method 4500. Copies of laboratory analysis and chain-of-custody documentation are included in Appendix E. The excavation depths and confirmation sample locations are shown in Figure 4.

All final confirmation samples were below the regulatory requirements for TPH, BTEX, and chloride. Refer to Table 2 for the analytical results.

Once the remediation activities were completed the excavated area was backfilled with clean material to surface grade. The material utilized for backfill was sourced locally. The composite pit sample was analyzed for TPH analysis by EPA method 8015, modified BTEX by method 8021B, and chloride by EPA method 4500. Copies of laboratory analysis and chain-of-custody documentation are included in Appendix E.

Approximately 65 cubic yards of material were excavated and transported off-site for proper disposal.

### **6.0 Conclusions**

Based on the assessment results and the final analytical data, no further actions are required at the site. EOG formally requests the closure of this incident. If you have any questions regarding this report or need additional information, please get in touch with us at 432-813-1992.

Sincerely,

**Carmona Resources, LLC**

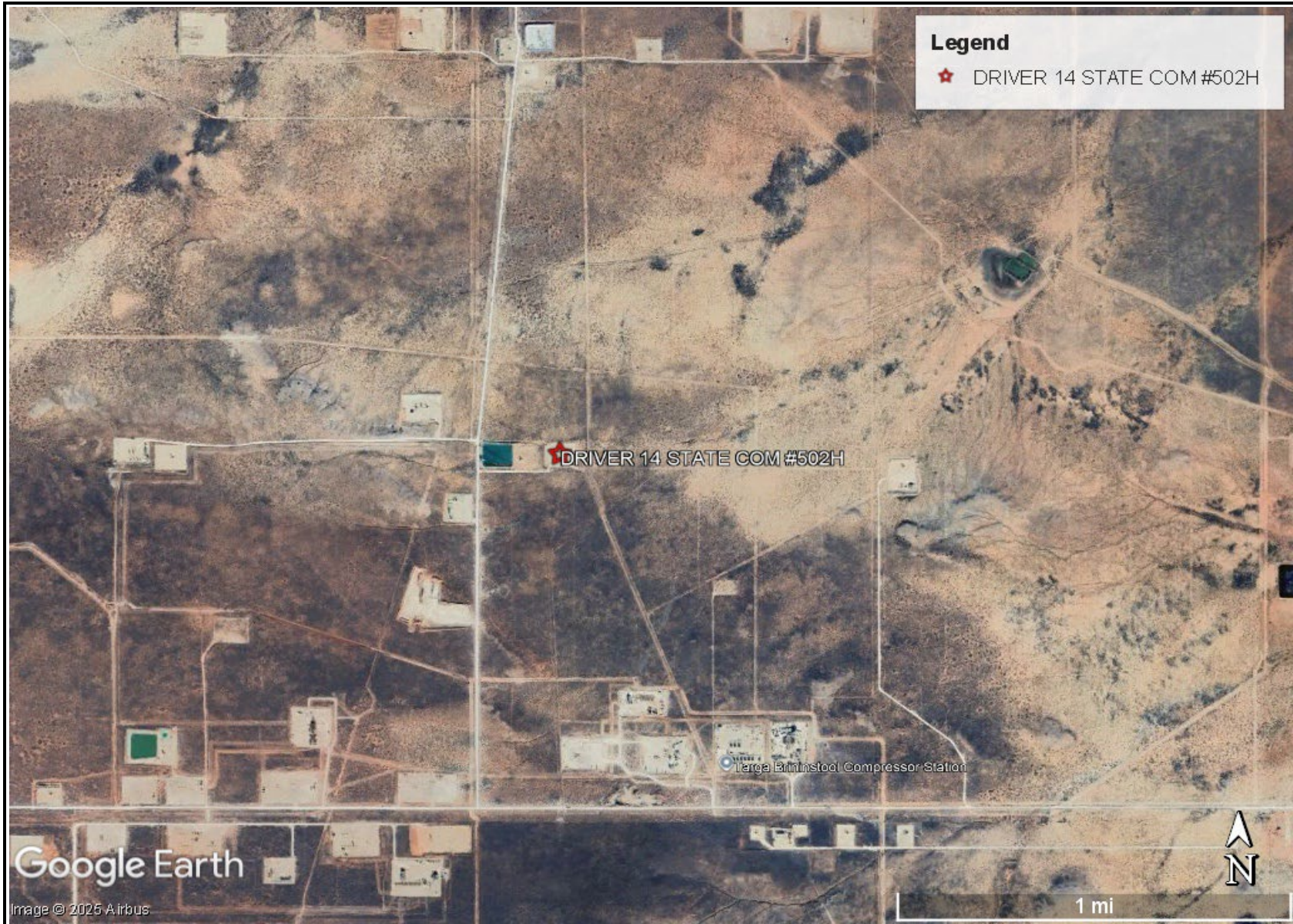
Conner Moehring  
Environmental Manager

Stephen Reyes  
Environmental Engineer

# FIGURES

CARMONA RESOURCES

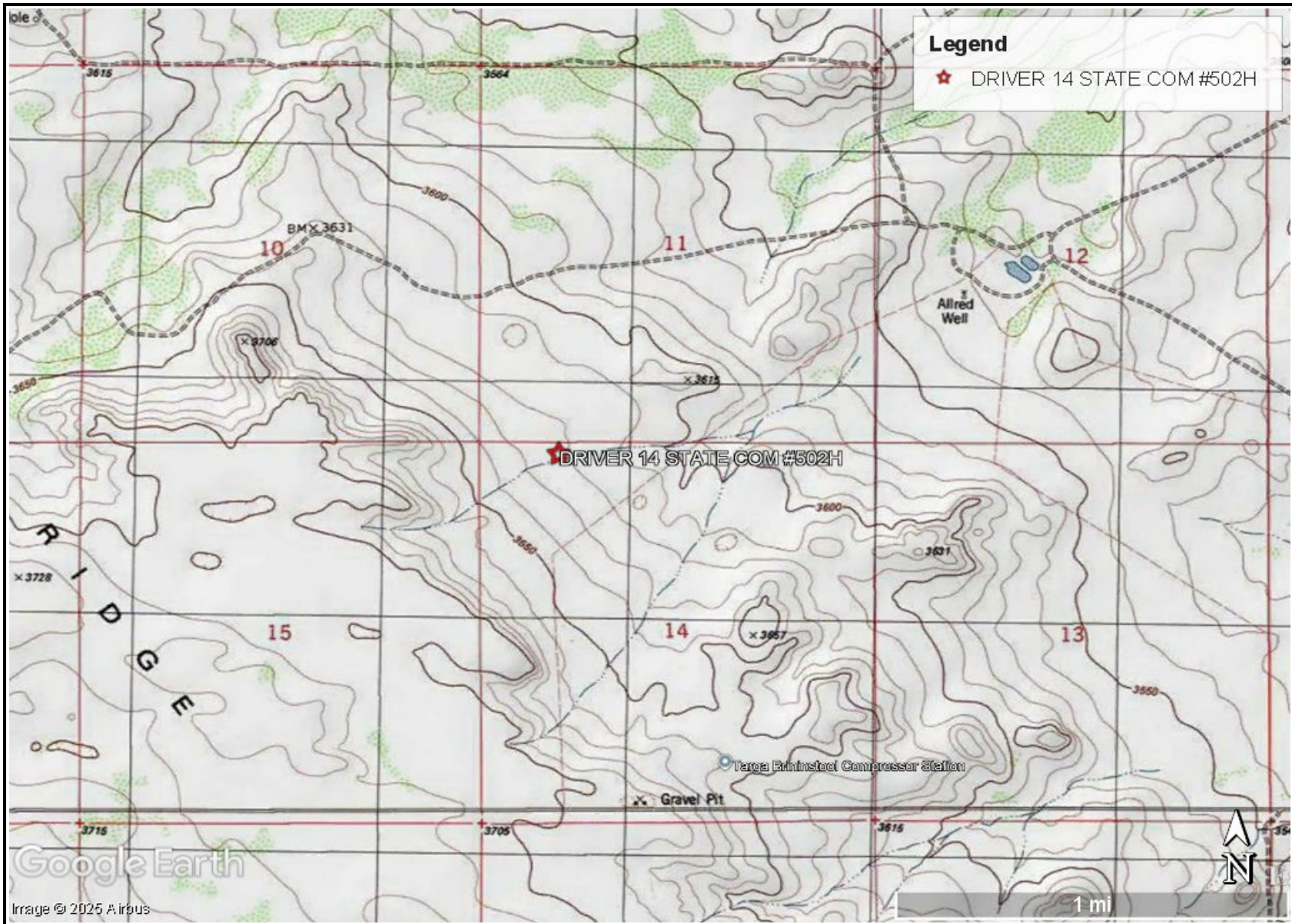




OVERVIEW MAP  
EOG RESOURCES  
DRIVER 14 STATE COM #502H  
LEA COUNTY, NEW MEXICO  
32.311543°, -103.547721°



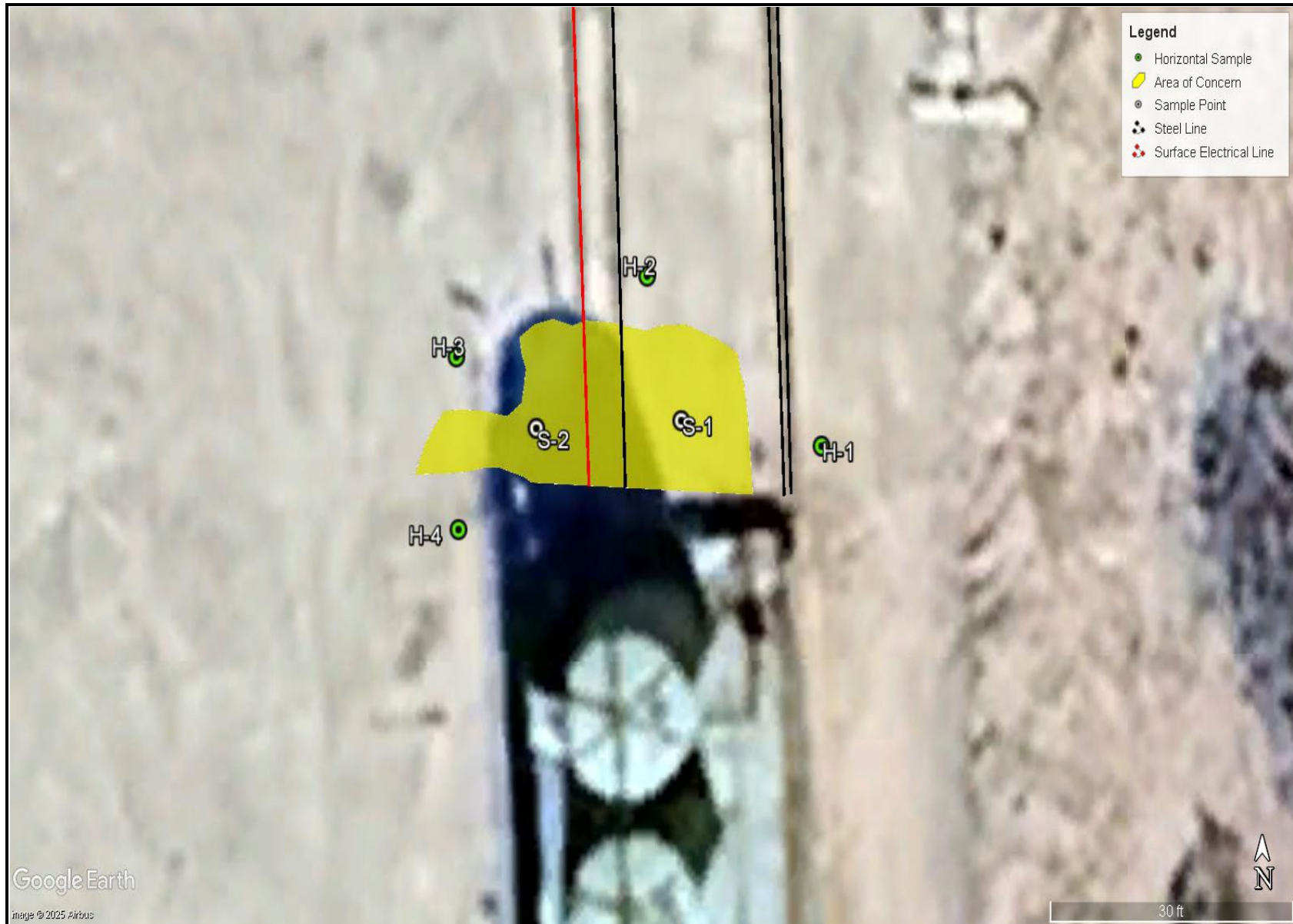
FIGURE 1



TOPOGRAPHIC MAP  
EOG RESOURCES  
DRIVER 14 STATE COM #502H  
LEA COUNTY, NEW MEXICO  
32.311543°, -103.547721°



FIGURE 2



Google Earth

Image © 2025 Airbus

SAMPLE LOCATION MAP  
EOG RESOURCES  
DRIVER 14 STATE COM #502H  
LEA COUNTY, NEW MEXICO  
32.311543°, -103.547721°



FIGURE 3



<p>EXCAVATION MAP EOG RESOURCES DRIVER 14 STATE COM #502H LEA COUNTY, NEW MEXICO 32.311543°, -103.547721°</p>	<p>CARMONA RESOURCES </p>	<p>FIGURE 4</p>
---	--	-----------------

## APPENDIX A

CARMONA RESOURCES



**Table 1**  
**EOG Resources**  
**Driver 14 State #502**  
**Lea County, New Mexico**

Sample ID	Date	Depth (ft)	TPH (mg/kg)				Benzene (mg/kg)	Toluene (mg/kg)	Ethylbenzene (mg/kg)	Xylene (mg/kg)	Total BTEX (mg/kg)	Chloride (mg/kg)
			GRO	DRO	MRO	Total						
S-1	10/20/2025	0-1'	962	6,080	1,020	8,062	<0.500	14.1	14.0	66.1	94.2	1,740
	"	1.5'	10.8	332	75.4	418.2	<0.050	<0.050	<0.050	<0.150	<0.300	224
	"	2'	<10.0	98.1	19.8	117.9	<0.050	<0.050	<0.050	<0.150	<0.300	112
	"	3'	<10.0	27.8	<10.0	27.8	<0.050	<0.050	<0.050	<0.150	<0.300	<16.0
S-2	10/20/2025	0-1'	516	2,560	485	3,561	<0.200	11.9	12.0	49.6	73.5	768
	"	1.5'	10.4	290	62.8	363.2	<0.050	<0.050	<0.050	<0.150	<0.300	256
	"	2'	<10.0	130	22.6	152.6	<0.050	<0.050	<0.050	0.213	<0.300	112
	"	3'	<10.0	23.2	<10.0	23.2	<0.050	<0.050	<0.050	<0.150	<0.300	48.0
"	4'	<10.0	<10.0	<10.0	<10.0	<0.050	<0.050	<0.050	<0.150	<0.300	<16.0	
H-1	10/20/2025	0-0.5'	<10.0	<10.0	<10.0	<10.0	<0.050	<0.050	<0.050	<0.150	<0.300	32.0
H-2	10/20/2025	0-0.5'	<10.0	<10.0	<10.0	<10.0	<0.050	<0.050	<0.050	<0.150	<0.300	64.0
H-3	10/20/2025	0-0.5'	<10.0	11.7	<10.0	11.7	<0.050	<0.050	<0.050	<0.150	<0.300	48.0
H-4	10/20/2025	0-0.5'	<10.0	<10.0	<10.0	<10.0	<0.050	<0.050	<0.050	<0.150	<0.300	64.0
<i>Regulatory Criteria</i> <sup>A</sup>			1,000 mg/kg			2,500 mg/kg	10 mg/kg				50 mg/kg	10,000 mg/kg

(-) Not Analyzed

<sup>A</sup> - Table 1 - 19.15.29 NMAC  
mg/kg - milligram per kilogram

TPH- Total Petroleum Hydrocarbons  
ft-feet

(S) Soil Sample

(H) Horizontal Sample

Removed

**Table 2**  
**EOG Resources**  
**Driver 14 State #502**  
**Lea County, New Mexico**

Sample ID	Date	Depth (ft)	TPH (mg/kg)				Benzene (mg/kg)	Toluene (mg/kg)	Ethlybenzene (mg/kg)	Xylene (mg/kg)	Total BTEX (mg/kg)	Chloride (mg/kg)
			GRO	DRO	MRO	Total						
CS-1	12/15/2025	3'	<10.0	<10.0	<10.0	<10.0	<0.050	<0.050	<0.050	<0.150	<0.300	32.0
CS-2	12/15/2025	3'	<10.0	<10.0	<10.0	<10.0	<0.050	<0.050	<0.050	<0.150	<0.300	32.0
CS-3	12/15/2025	3'	<10.0	<10.0	<10.0	<10.0	<0.050	<0.050	<0.050	<0.150	<0.300	32.0
SW-1	12/15/2025	3'	<10.0	<10.0	<10.0	<10.0	<0.050	<0.050	<0.050	<0.150	<0.300	48.0
SW-2	12/15/2025	3'	<10.0	<10.0	<10.0	<10.0	<0.050	<0.050	<0.050	<0.150	<0.300	32.0
SW-3	12/15/2025	3'	<10.0	<10.0	<10.0	<10.0	<0.050	<0.050	<0.050	<0.150	<0.300	32.0
SW-4	12/15/2025	3'	<10.0	<10.0	<10.0	<10.0	<0.050	<0.050	<0.050	<0.150	<0.300	32.0
SW-5	12/15/2025	3'	<10.0	<10.0	<10.0	<10.0	<0.050	<0.050	<0.050	<0.150	<0.300	32.0
SW-6	12/15/2025	3'	<10.0	<10.0	<10.0	<10.0	<0.050	<0.050	<0.050	<0.150	<0.300	48.0
Backfill Sample	12/15/2025	-	<10.0	<10.0	<10.0	<10.0	<0.050	<0.050	<0.050	<0.150	<0.300	80.0
<i>Regulatory Criteria<sup>A</sup></i>			1,000 mg/kg			2,500 mg/kg	10 mg/kg				50 mg/kg	10,000 mg/kg

(-) Not Analyzed

<sup>A</sup> - Table 1 - 19.15.29 NMAC

mg/kg - milligram per kilogram

TPH - Total Petroleum Hydrocarbons

ft - feet

(CS) Confirmation Sample

(SW) Sidewall Sample

## APPENDIX B

CARMONA RESOURCES



# PHOTOGRAPHIC LOG

## EOG Resources

### Photograph No. 1

**Facility:** Driver 14 State #502

**County:** Lea County, Texas

**Description:**  
View South, area of CS-1



### Photograph No. 2

**Facility:** Driver 14 State #502

**County:** Lea County, Texas

**Description:**  
View East, area of CS-2.



### Photograph No. 3

**Facility:** Driver 14 State #502

**County:** Lea County, Texas

**Description:**  
View Southeast, area of CS-3.



# PHOTOGRAPHIC LOG

## EOG Resources

### Photograph No. 4

**Facility:** Driver 14 State #502

**County:** Lea County, Texas

**Description:**  
View West of backfilled area.



### Photograph No. 5

**Facility:** Driver 14 State #502

**County:** Lea County, Texas

**Description:**  
View Northeast of backfilled area.



### Photograph No. 6

**Facility:** Driver 14 State #502

**County:** Lea County, Texas

**Description:**  
View Southeast of backfilled area.



## APPENDIX C

CARMONA RESOURCES



Sante Fe Main Office  
Phone: (505) 476-3441

General Information  
Phone: (505) 629-6116

Online Phone Directory  
<https://www.emnrd.nm.gov/ocd/contact-us>

**State of New Mexico**  
**Energy, Minerals and Natural Resources**  
**Oil Conservation Division**  
**1220 S. St Francis Dr.**  
**Santa Fe, NM 87505**

QUESTIONS

Action 514711

**QUESTIONS**

Operator: EOG RESOURCES INC 5509 Champions Drive Midland, TX 79706	OGRID: 7377
	Action Number: 514711
	Action Type: [NOTIFY] Notification Of Release (NOR)

**QUESTIONS**

<b>Location of Release Source</b>	
<i>Please answer all the questions in this group.</i>	
Site Name	Driver 14 State #502H
Date Release Discovered	10/11/2025
Surface Owner	State

<b>Incident Details</b>	
<i>Please answer all the questions in this group.</i>	
Incident Type	Produced Water Release
Did this release result in a fire or is the result of a fire	No
Did this release result in any injuries	No
Has this release reached or does it have a reasonable probability of reaching a watercourse	No
Has this release endangered or does it have a reasonable probability of endangering public health	No
Has this release substantially damaged or will it substantially damage property or the environment	No
Is this release of a volume that is or may with reasonable probability be detrimental to fresh water	No

<b>Nature and Volume of Release</b>	
<i>Material(s) released, please answer all that apply below. Any calculations or specific justifications for the volumes provided should be attached to the follow-up C-141 submission.</i>	
Crude Oil Released (bbls) Details	Cause: Overflow - Tank, Pit, Etc.   Production Tank   Crude Oil   Released: 1 BBL   Recovered: 1 BBL   Lost: 0 BBL.
Produced Water Released (bbls) Details	Cause: Overflow - Tank, Pit, Etc.   Production Tank   Produced Water   Released: 6 BBL   Recovered: 5 BBL   Lost: 1 BBL.
Is the concentration of chloride in the produced water >10,000 mg/l	Yes
Condensate Released (bbls) Details	Not answered.
Natural Gas Vented (Mcf) Details	Not answered.
Natural Gas Flared (Mcf) Details	Not answered.
Other Released Details	Not answered.
Are there additional details for the questions above (i.e. any answer containing Other, Specify, Unknown, and/or Fire, or any negative lost amounts)	Not answered.

Sante Fe Main Office  
Phone: (505) 476-3441

General Information  
Phone: (505) 629-6116

Online Phone Directory  
<https://www.emnrd.nm.gov/ocd/contact-us>

**State of New Mexico**  
**Energy, Minerals and Natural Resources**  
**Oil Conservation Division**  
**1220 S. St Francis Dr.**  
**Santa Fe, NM 87505**

QUESTIONS, Page 2

Action 514711

**QUESTIONS (continued)**

Operator: EOG RESOURCES INC 5509 Champions Drive Midland, TX 79706	OGRID: 7377
	Action Number: 514711
	Action Type: [NOTIFY] Notification Of Release (NOR)

**QUESTIONS**

<b>Nature and Volume of Release (continued)</b>	
Is this a gas only submission (i.e. only significant Mcf values reported)	No, according to supplied volumes this does not appear to be a "gas only" report.
Was this a major release as defined by Subsection A of 19.15.29.7 NMAC	No
Reasons why this would be considered a submission for a notification of a major release	Unavailable.

*With the implementation of the 19.15.27 NMAC (05/25/2021), venting and/or flaring of natural gas (i.e. gas only) are to be submitted on the C-129 form.*

**Initial Response**

*The responsible party must undertake the following actions immediately unless they could create a safety hazard that would result in injury.*

The source of the release has been stopped	True
The impacted area has been secured to protect human health and the environment	True
Released materials have been contained via the use of berms or dikes, absorbent pads, or other containment devices	True
All free liquids and recoverable materials have been removed and managed appropriately	True
If all the actions described above have not been undertaken, explain why	na

*Per Paragraph 4 of Subsection B of 19.15.29.8 NMAC the responsible party may commence remediation immediately after discovery of a release. If remediation has begun, please prepare and attach a narrative of actions to date in the follow-up C-141 submission. If remedial efforts have been successfully completed or if the release occurred within a lined containment area (see 19.15.29.11(A)(5)(a) NMAC), please prepare and attach all information needed for closure evaluation in the follow-up C-141 submission.*

Sante Fe Main Office  
Phone: (505) 476-3441

General Information  
Phone: (505) 629-6116

Online Phone Directory  
<https://www.emnrd.nm.gov/ocd/contact-us>

**State of New Mexico**  
**Energy, Minerals and Natural Resources**  
**Oil Conservation Division**  
**1220 S. St Francis Dr.**  
**Santa Fe, NM 87505**

ACKNOWLEDGMENTS

Action 514711

**ACKNOWLEDGMENTS**

Operator: EOG RESOURCES INC 5509 Champions Drive Midland, TX 79706	OGRID: 7377
	Action Number: 514711
	Action Type: [NOTIFY] Notification Of Release (NOR)

**ACKNOWLEDGMENTS**

<input checked="" type="checkbox"/>	I acknowledge that I am authorized to submit notification of a release on behalf of my operator.
<input checked="" type="checkbox"/>	I acknowledge that upon submitting this application, I will be creating a new incident file (assigned to my operator) to track the notification(s) and corrective action(s) for a release, pursuant to NMAC 19.15.29.
<input checked="" type="checkbox"/>	I acknowledge that creating a new incident file will require my operator to file subsequent submission(s) of form "C-141, Application for administrative approval of a release notification and corrective action", pursuant to NMAC 19.15.29.
<input checked="" type="checkbox"/>	I hereby certify that the information given above is true and complete to the best of my knowledge and understand that pursuant to OCD rules and regulations all operators are required to report and/or file certain release notifications and perform corrective actions for releases which may endanger public health or the environment.
<input checked="" type="checkbox"/>	I acknowledge the fact that the acceptance of a C-141 report by the OCD does not relieve the operator of liability should their operations have failed to adequately investigate and remediate contamination that pose a threat to groundwater, surface water, human health or the environment.
<input checked="" type="checkbox"/>	I acknowledge the fact that, in addition, OCD acceptance of a C-141 report does not relieve the operator of responsibility for compliance with any other federal, state, or local laws and/or regulations.

Sante Fe Main Office  
Phone: (505) 476-3441

General Information  
Phone: (505) 629-6116

Online Phone Directory  
<https://www.emnrd.nm.gov/ocd/contact-us>

**State of New Mexico**  
**Energy, Minerals and Natural Resources**  
**Oil Conservation Division**  
**1220 S. St Francis Dr.**  
**Santa Fe, NM 87505**

CONDITIONS

Action 514711

**CONDITIONS**

Operator: EOG RESOURCES INC 5509 Champions Drive Midland, TX 79706	OGRID: 7377
	Action Number: 514711
	Action Type: [NOTIFY] Notification Of Release (NOR)

**CONDITIONS**

Created By	Condition	Condition Date
todd wells	When submitting future reports regarding this release, please submit the calculations used or specific justification for the volumes reported on the initial C-141.	10/13/2025

\*\*\*\*\* LIQUID SPILLS - VOLUME CALCULATIONS \*\*\*\*\*

Location of spill: Driver 14 State #502H

Date of Spill: 10/11/2025

If the leak/spill is associated with production equipment, i.e. - wellhead, stuffing box, flowline, tank battery, production vessel, transfer pump, or storage tank place an "X" here:

**Input Data:**

If spill volumes from measurement, i.e. metering, tank volumes, etc. are known enter the volumes here: OIL: 0.0000 BBL WATER: 0.0000 BBL

If "known" spill volumes are given, input data for the following "Area Calculations" is optional. The above will override the calculated volumes.

Total Area Calculations					Standing Liquid Calculations				
Total Surface Area	width	length	wet soil depth	oil (%)	Standing Liquid Area	width	length	liquid depth	oil (%)
Rectangle Area #1	15 ft X	20 ft X	4.00 in	0%	Rectangle Area #1	0 ft X	0 ft X	0 in	0%
Rectangle Area #2	15 ft X	20 ft X	4.50 in	0%	Rectangle Area #2	0 ft X	0 ft X	0 in	0%
Rectangle Area #3	10 ft X	13 ft X	6.00 in	0%	Rectangle Area #3	0 ft X	0 ft X	0 in	0%
Rectangle Area #4	0 ft X	0 ft X	0.00 in	0%	Rectangle Area #4	0 ft X	0 ft X	0 in	0%
Rectangle Area #5	0 ft X	0 ft X	0.00 in	0%	Rectangle Area #5	0 ft X	0 ft X	0 in	0%
Rectangle Area #6	0 ft X	0 ft X	0.00 in	0%	Rectangle Area #6	0 ft X	0 ft X	0 in	0%
Rectangle Area #7	0 ft X	0 ft X	0.00 in	0%	Rectangle Area #7	0 ft X	0 ft X	0 in	0%
Rectangle Area #8	0 ft X	0 ft X	0.00 in	0%	Rectangle Area #8	0 ft X	0 ft X	0 in	0%

okay

**production system leak - DAILY PRODUCTION DATA REQUIRED**

Average Daily Production: Oil 0 BBL Water 0 BBL

Did leak occur before the separator?:  YES  N/A (place an "X")

Amount of Free Liquid Recovered: 5 BBL okay

Percentage of Oil in Free Liquid Recovered: 0% (percentage)

Liquid holding factor \*: 0.14 gal per gal

Use the following when the spill wets the grains of the soil.

Use the following when the liquid completely fills the pore space of the soil:

\* sand = .08 gallon liquid per gallon volume of soil.

Occurs when the spill soaked soil is contained by barriers, natural (or not).

\* gravelly (caliche) loam = .14 gallon liquid per gallon volume of soil.

\* gravelly (caliche) loam = .25 gallon liquid per gallon volume of soil.

\* sandy clay loam soil = .14 gallon liquid per gallon volume of soil.

\* sandy loam = .5 gallon liquid per gallon volume of soil.

\* clay loam = .16 gallon liquid per gallon volume of soil.

**Saturated Soil Volume Calculations:**

Total Solid/Liquid Volume: 730 sq. ft. 278 cu. ft. 0.000 cu. ft.

**Estimated Volumes Spilled**

Liquid in Soil: 6.9 BBL 0.0 BBL  
 Free Liquid: 0.0 BBL 0.0 BBL  
 Totals: 6.919 BBL 0.000 BBL

Total Liquid Spill Liquid: 6.919 BBL 0.000 BBL

**Recovered Volumes**

Estimated oil recovered: 0.0 BBL check - okay  
 Estimated water recovered: 5.0 BBL check - okay

**Free Liquid Volume Calculations:**

Total Free Liquid Volume: 0.000 sq. ft. 0.000 cu. ft. 0.000 cu. ft.

**Estimated Production Volumes Lost**

Estimated Production Spilled: 0.000000 BBL 0.000000 BBL

**Estimated Surface Damage**

Surface Area: 730 sq. ft.  
 Surface Area: .0168 acre

**Estimated Weights, and Volumes**

Saturated Soil = 31,080 lbs 278 cu. ft. 10 cu. yds.  
 Total Liquid = 7 BBL 290.60 gallon 2,418 lbs

Sante Fe Main Office  
Phone: (505) 476-3441

General Information  
Phone: (505) 629-6116

Online Phone Directory  
<https://www.emnrd.nm.gov/ocd/contact-us>

**State of New Mexico**  
**Energy, Minerals and Natural Resources**  
**Oil Conservation Division**  
**1220 S. St Francis Dr.**  
**Santa Fe, NM 87505**

QUESTIONS

Action 520245

**QUESTIONS**

Operator: EOG RESOURCES INC 5509 Champions Drive Midland, TX 79706	OGRID: 7377
	Action Number: 520245
	Action Type: [C-141] Initial C-141 (C-141-v-Initial)

**QUESTIONS**

<b>Prerequisites</b>	
Incident ID (n#)	nAPP2528652444
Incident Name	NAPP2528652444 DRIVER 14 STATE #502H @ D-14-23S-33E
Incident Type	Produced Water Release
Incident Status	Initial C-141 Received

<b>Location of Release Source</b>	
<i>Please answer all the questions in this group.</i>	
Site Name	Driver 14 State #502H
Date Release Discovered	10/11/2025
Surface Owner	State

<b>Incident Details</b>	
<i>Please answer all the questions in this group.</i>	
Incident Type	Produced Water Release
Did this release result in a fire or is the result of a fire	No
Did this release result in any injuries	No
Has this release reached or does it have a reasonable probability of reaching a watercourse	No
Has this release endangered or does it have a reasonable probability of endangering public health	No
Has this release substantially damaged or will it substantially damage property or the environment	No
Is this release of a volume that is or may with reasonable probability be detrimental to fresh water	No

<b>Nature and Volume of Release</b>	
<i>Material(s) released, please answer all that apply below. Any calculations or specific justifications for the volumes provided should be attached to the follow-up C-141 submission.</i>	
Crude Oil Released (bbls) Details	Cause: Overflow - Tank, Pit, Etc.   Production Tank   Crude Oil   Released: 1 BBL   Recovered: 1 BBL   Lost: 0 BBL.
Produced Water Released (bbls) Details	Cause: Overflow - Tank, Pit, Etc.   Production Tank   Produced Water   Released: 6 BBL   Recovered: 4 BBL   Lost: 2 BBL.
Is the concentration of chloride in the produced water >10,000 mg/l	Yes
Condensate Released (bbls) Details	Not answered.
Natural Gas Vented (Mcf) Details	Not answered.
Natural Gas Flared (Mcf) Details	Not answered.
Other Released Details	Not answered.
Are there additional details for the questions above (i.e. any answer containing Other, Specify, Unknown, and/or Fire, or any negative lost amounts)	Not answered.

Sante Fe Main Office  
Phone: (505) 476-3441

General Information  
Phone: (505) 629-6116

Online Phone Directory  
<https://www.emnrd.nm.gov/ocd/contact-us>

**State of New Mexico**  
**Energy, Minerals and Natural Resources**  
**Oil Conservation Division**  
**1220 S. St Francis Dr.**  
**Santa Fe, NM 87505**

QUESTIONS, Page 2

Action 520245

**QUESTIONS (continued)**

Operator: EOG RESOURCES INC 5509 Champions Drive Midland, TX 79706	OGRID: 7377
	Action Number: 520245
	Action Type: [C-141] Initial C-141 (C-141-v-Initial)

**QUESTIONS**

<b>Nature and Volume of Release (continued)</b>	
Is this a gas only submission (i.e. only significant Mcf values reported)	<b>No, according to supplied volumes this does not appear to be a "gas only" report.</b>
Was this a major release as defined by Subsection A of 19.15.29.7 NMAC	<b>No</b>
Reasons why this would be considered a submission for a notification of a major release	<i>Unavailable.</i>
<i>With the implementation of the 19.15.27 NMAC (05/25/2021), venting and/or flaring of natural gas (i.e. gas only) are to be submitted on the C-129 form.</i>	

**Initial Response**

*The responsible party must undertake the following actions immediately unless they could create a safety hazard that would result in injury.*

The source of the release has been stopped	True
The impacted area has been secured to protect human health and the environment	True
Released materials have been contained via the use of berms or dikes, absorbent pads, or other containment devices	True
All free liquids and recoverable materials have been removed and managed appropriately	True
If all the actions described above have not been undertaken, explain why	na

*Per Paragraph (4) of Subsection B of 19.15.29.8 NMAC the responsible party may commence remediation immediately after discovery of a release. If remediation has begun, please prepare and attach a narrative of actions to date in the follow-up C-141 submission. If remedial efforts have been successfully completed or if the release occurred within a lined containment area (see Subparagraph (a) of Paragraph (5) of Subsection A of 19.15.29.11 NMAC), please prepare and attach all information needed for closure evaluation in the follow-up C-141 submission.*

I hereby certify that the information given above is true and complete to the best of my knowledge and understand that pursuant to OCD rules and regulations all operators are required to report and/or file certain release notifications and perform corrective actions for releases which may endanger public health or the environment. The acceptance of a C-141 report by the OCD does not relieve the operator of liability should their operations have failed to adequately investigate and remediate contamination that pose a threat to groundwater, surface water, human health or the environment. In addition, OCD acceptance of a C-141 report does not relieve the operator of responsibility for compliance with any other federal, state, or local laws and/or regulations.

I hereby agree and sign off to the above statement	Name: Todd Wells Title: Safety and Environmental Specialist Email: Todd_Wells@eogresources.com Date: 10/27/2025
--	--

Sante Fe Main Office  
Phone: (505) 476-3441

General Information  
Phone: (505) 629-6116

Online Phone Directory  
<https://www.emnrd.nm.gov/ocd/contact-us>

**State of New Mexico**  
**Energy, Minerals and Natural Resources**  
**Oil Conservation Division**  
**1220 S. St Francis Dr.**  
**Santa Fe, NM 87505**

QUESTIONS, Page 3

Action 520245

**QUESTIONS (continued)**

Operator: EOG RESOURCES INC 5509 Champions Drive Midland, TX 79706	OGRID: 7377
	Action Number: 520245
	Action Type: [C-141] Initial C-141 (C-141-v-Initial)

**QUESTIONS**

**Site Characterization**  
*Please answer all the questions in this group (only required when seeking remediation plan approval and beyond). This information must be provided to the appropriate district office no later than 90 days after the release discovery date.*

What is the shallowest depth to groundwater beneath the area affected by the release in feet below ground surface (ft bgs)	Not answered.
What method was used to determine the depth to ground water	Not answered.
Did this release impact groundwater or surface water	Not answered.
<b>What is the minimum distance, between the closest lateral extents of the release and the following surface areas:</b>	
A continuously flowing watercourse or any other significant watercourse	Not answered.
Any lakebed, sinkhole, or playa lake (measured from the ordinary high-water mark)	Not answered.
An occupied permanent residence, school, hospital, institution, or church	Not answered.
A spring or a private domestic fresh water well used by less than five households for domestic or stock watering purposes	Not answered.
Any other fresh water well or spring	Not answered.
Incorporated municipal boundaries or a defined municipal fresh water well field	Not answered.
A wetland	Not answered.
A subsurface mine	Not answered.
An (non-karst) unstable area	Not answered.
Categorize the risk of this well / site being in a karst geology	Not answered.
A 100-year floodplain	Not answered.
Did the release impact areas not on an exploration, development, production, or storage site	Not answered.

**Remediation Plan**  
*Please answer all the questions that apply or are indicated. This information must be provided to the appropriate district office no later than 90 days after the release discovery date.*

Requesting a remediation plan approval with this submission	No
<i>The OCD recognizes that proposed remediation measures may have to be minimally adjusted in accordance with the physical realities encountered during remediation. If the responsible party has any need to significantly deviate from the remediation plan proposed, then it should consult with the division to determine if another remediation plan submission is required.</i>	

Sante Fe Main Office  
Phone: (505) 476-3441

General Information  
Phone: (505) 629-6116

Online Phone Directory  
<https://www.emnrd.nm.gov/ocd/contact-us>

**State of New Mexico**  
**Energy, Minerals and Natural Resources**  
**Oil Conservation Division**  
**1220 S. St Francis Dr.**  
**Santa Fe, NM 87505**

CONDITIONS

Action 520245

**CONDITIONS**

Operator: EOG RESOURCES INC 5509 Champions Drive Midland, TX 79706	OGRID: 7377
	Action Number: 520245
	Action Type: [C-141] Initial C-141 (C-141-v-Initial)

**CONDITIONS**

Created By	Condition	Condition Date
nvez	None	10/27/2025

Sante Fe Main Office  
Phone: (505) 476-3441

General Information  
Phone: (505) 629-6116

Online Phone Directory  
<https://www.emnrd.nm.gov/ocd/contact-us>

**State of New Mexico  
Energy, Minerals and Natural Resources  
Oil Conservation Division  
1220 S. St Francis Dr.  
Santa Fe, NM 87505**

QUESTIONS

Action 533963

**QUESTIONS**

Operator: EOG RESOURCES INC 5509 Champions Drive Midland, TX 79706	OGRID: 7377
	Action Number: 533963
	Action Type: [NOTIFY] Notification Of Sampling (C-141N)

**QUESTIONS**

<b>Prerequisites</b>	
Incident ID (n#)	nAPP2528652444
Incident Name	NAPP2528652444 DRIVER 14 STATE #502H @ D-14-23S-33E
Incident Type	Produced Water Release
Incident Status	Initial C-141 Approved

<b>Location of Release Source</b>	
Site Name	Driver 14 State #502H
Date Release Discovered	10/11/2025
Surface Owner	State

<b>Sampling Event General Information</b>	
<i>Please answer all the questions in this group.</i>	
What is the sampling surface area in square feet	530
What is the estimated number of samples that will be gathered	10
Sampling date pursuant to Subparagraph (a) of Paragraph (1) of Subsection D of 19.15.29.12 NMAC	12/15/2025
Time sampling will commence	10:30 AM
Please provide any information necessary for observers to contact samplers	Sampler Information: Carmona Resources – 432-813-6823
Please provide any information necessary for navigation to sampling site	Driving Directions – 32.31153, -103.547677

Sante Fe Main Office  
Phone: (505) 476-3441

General Information  
Phone: (505) 629-6116

Online Phone Directory  
<https://www.emnrd.nm.gov/ocd/contact-us>

**State of New Mexico**  
**Energy, Minerals and Natural Resources**  
**Oil Conservation Division**  
**1220 S. St Francis Dr.**  
**Santa Fe, NM 87505**

CONDITIONS

Action 533963

**CONDITIONS**

Operator: EOG RESOURCES INC 5509 Champions Drive Midland, TX 79706	OGRID: 7377
	Action Number: 533963
	Action Type: [NOTIFY] Notification Of Sampling (C-141N)

**CONDITIONS**

Created By	Condition	Condition Date
todd wells	Failure to notify the OCD of sampling events including any changes in date/time per the requirements of 19.15.29.12.D.(1).(a) NMAC, may result in the remediation closure samples not being accepted.	12/11/2025
todd wells	If confirmation sampling is going to take place over multiple days, individual C-141N applications must be submitted for each sampling date. Date ranges are not currently accepted on the C-141N application.	12/11/2025

## Conner Moehring

---

**From:** Conner Moehring  
**Sent:** Thursday, December 11, 2025 10:35 AM  
**To:** eco@nmslo.gov  
**Cc:** Mike Carmona; Stephen Reyes; Ivan Ramos; Todd Wells; Bill Smith  
**Subject:** EOG - Driver 14 State #502 - Confirmation Sampling Notification  
**Attachments:** The Oil Conservation Division (OCD) has accepted the application, Application ID: 533963

Good Morning,

On behalf of EOG Resources, we are submitting a confirmation sampling notification to the NMSLO that is in line with the NMOCD sampling notification. The confirmation sampling is to take place on December 15, 2025, at approximately 10:30 am (Mountain Time). The site is located at 32.31153, -103.547677.

Please call if you have any questions or need any additional information.

Conner R. Moehring  
310 West Wall Street, Suite 500  
Midland TX, 79701  
M: 432-813-6823  
[cmoehring@carmonaresources.com](mailto:cmoehring@carmonaresources.com)  
[carmonaresources.com](http://carmonaresources.com)

## APPENDIX D

CARMONA RESOURCES



# Nearest water well

EOG RESOURCES INC

## Legend

- 0.15 Miles
- 0.50 Mile Radius
- 1.06 Miles
- 1.09 Miles
- DRIVER 14 STATE COM #502H
- Groundwater Determination Bore
- NMSEO Water Well
- USGS Water Well



105' GWDB - Drilled 2025

81' - Drilled 2012

DRIVER 14 STATE COM #502H



324.95' - Drilled 1996



**Low Karst**

EOG RESOURCES INC

**Legend**

-  DRIVER 14 STATE COM #502H
-  Low





# New Mexico Office of the State Engineer

## Water Column/Average Depth to Water

(A CLW##### in the POD suffix indicates the POD has been replaced & no longer serves a water right file.)

(R=POD has been replaced, O=orphaned, C=the file is closed)

(quarters are smallest to largest)

(meters)

(In feet)

POD Number	Code	Sub basin	County	Q64	Q16	Q4	Sec	Tws	Range	X	Y	Map	Distance	Well Depth	Depth Water	Water Column
<a href="#">C 03582 POD1</a>		C	LE	SE	NW	NW	14	23S	33E	636582.9	3575666.7	●	240	590		
<a href="#">C 04664 POD1</a>		CUB	LE	SE	NW	SE	15	23S	33E	635783.7	3574818.7	●	1390	55		
<a href="#">C 04767 POD1</a>		CUB	LE	NW	SE	SE	03	23S	33E	636045.7	3577837.4	●	2043	55		
<a href="#">C 04929 POD1</a>		CUB	LE	SE	SW	SW	23	23S	33E	636685.4	3572738.9	●	3152	55		
<a href="#">C 04813 POD1</a>		CUB	LE	NW	NW	SE	01	23S	33E	638811.1	3578262.8	●	3195	102		
<a href="#">C 04353 POD1</a>		CUB	ED	SE	NE	NE	24	23S	33E	639474.1	3574098.4	●	3328	603	330	273
<a href="#">C 02283</a>		CUB	LE	SE	NE	NE	26	23S	33E	637896.0	3572431.0 *	●	3671	325	225	100
<a href="#">C 04963 POD1</a>		CUB	LE	NW	NW	NW	27	23S	33E	634862.2	3572675.6	●	3688	80	70	10
<a href="#">C 02282</a>		CUB	LE	SW	NW	NW	25	23S	33E	638098.0	3572436.0 *	●	3738	325	225	100
<a href="#">CP 01971 POD1</a>		CP	LE	NW	NW	SW	06	23S	34E	639699.6	3578272.7	●	3854			

Average Depth to Water: **212 feet**

Minimum Depth: **70 feet**

Maximum Depth: **330 feet**

**Record Count:** 10

**UTM Filters (in meters):**

**Easting:** 636669.00

**Northing:** 3575891.00

**Radius:** 4000

\* UTM location was derived from PLSS - see Help

The data is furnished by the NMOSE/ISC and is accepted by the recipient with the expressed understanding that the OSE/ISC make no warranties, expressed or implied, concerning the accuracy, completeness, reliability, usability, or suitability for any particular purpose of the data.



**WELL RECORD & LOG**  
 OFFICE OF THE STATE ENGINEER  
 www.ose.state.nm.us

STATE ENGINEER OFFICE  
 ROSWELL, NEW MEXICO

2012 NOV 21 A 10:14

1. GENERAL AND WELL LOCATION	POD NUMBER (WELL NUMBER) <b>C-03582</b>				OSE FILE NUMBER(S) <b>C03582</b>											
	WELL OWNER NAME(S) <b>Bill Angel</b>				PHONE (OPTIONAL) <b>575-369-6303</b>											
	WELL OWNER MAILING ADDRESS <b>PO Box 190</b>				CITY <b>Rouington nm</b>		STATE <b>nm</b>		ZIP <b>88260</b>							
	WELL LOCATION (FROM GPS)		DEGREES <b>32</b>	MINUTES <b>18</b>	SECONDS <b>34.2</b>	N		* ACCURACY REQUIRED: ONE TENTH OF A SECOND								
		LONGITUDE <b>103</b>	<b>32</b>	<b>57.0</b>	W		* DATUM REQUIRED: WGS 84									
DESCRIPTION RELATING WELL LOCATION TO STREET ADDRESS AND COMMON LANDMARKS																
2. OPTIONAL	(2.5 ACRE) <b>1/4</b>		(10 ACRE) <b>1/4</b>		(40 ACRE) <b>1/4</b>		(160 ACRE) <b>1/4</b>		SECTION	TOWNSHIP	RANGE					
										<input type="checkbox"/> NORTH <input type="checkbox"/> SOUTH	<input type="checkbox"/> EAST <input type="checkbox"/> WEST					
	SUBDIVISION NAME				LOT NUMBER		BLOCK NUMBER		UNIT/TRACT							
	HYDROGRAPHIC SURVEY				MAP NUMBER		TRACT NUMBER									
3. DRILLING INFORMATION	LICENSE NUMBER <b>WD1682</b>		NAME OF LICENSED DRILLER <b>John Nomis</b>				NAME OF WELL DRILLING COMPANY <b>Hunary Horse LLC</b>									
	DRILLING STARTED <b>10-1-12</b>		DRILLING ENDED <b>10-18-12</b>		DEPTH OF COMPLETED WELL (FT) <b>590</b>		BORE HOLE DEPTH (FT) <b>590</b>		DEPTH WATER FIRST ENCOUNTERED (FT)							
	COMPLETED WELL IS:		<input type="checkbox"/> ARTESIAN		<input type="checkbox"/> DRY HOLE		<input checked="" type="checkbox"/> SHALLOW (UNCONFINED)		STATIC WATER LEVEL IN COMPLETED WELL (FT)							
	DRILLING FLUID:		<input type="checkbox"/> AIR		<input checked="" type="checkbox"/> MUD		<input type="checkbox"/> ADDITIVES - SPECIFY:									
	DRILLING METHOD:		<input checked="" type="checkbox"/> ROTARY		<input type="checkbox"/> HAMMER		<input type="checkbox"/> CABLE TOOL		<input type="checkbox"/> OTHER - SPECIFY:							
	DEPTH (FT)		BORE HOLE DIA. (IN)		CASING MATERIAL		CONNECTION TYPE (CASING)		INSIDE DIA. CASING (IN)		CASING WALL THICKNESS (IN)		SLOT SIZE (IN)			
	FROM <b>0</b>		TO <b>590</b>		<b>12"</b>		<b>PVC</b>		<b>glued</b>		<b>6"</b>		<b>3/8</b>		<b>1/8</b>	
	4. WATER-BEARING STRATA	DEPTH (FT)		THICKNESS (FT)		FORMATION DESCRIPTION OF PRINCIPAL WATER-BEARING STRATA (INCLUDE WATER-BEARING CAVITIES OR FRACTURE ZONES)						YIELD (GPM)				
FROM <b>18</b>		TO <b>65</b>		<b>47</b>		<b>Sand</b>						<b>4K</b>				
<b>95</b>		<b>110</b>		<b>13</b>		<b>Sand</b>						<b>4K</b>				
<b>230</b>		<b>236</b>		<b>6</b>		<b>Sand</b>						<b>4K</b>				
<b>383</b>		<b>391</b>		<b>8</b>		<b>Sand</b>						<b>4K</b>				
<b>410</b>		<b>416</b>		<b>6</b>		<b>Sand</b>						<b>4K</b>				
METHOD USED TO ESTIMATE YIELD OF WATER-BEARING STRATA <b>N/A</b>								TOTAL ESTIMATED WELL YIELD (GPM)								

FOR OSE INTERNAL USE				WELL RECORD & LOG (Version 6/9/08)			
FILE NUMBER <b>C-3582</b>		POD NUMBER <b>235.33E.14.114</b>		TRN NUMBER <b>515767</b>		PAGE 1 OF 2	
LOCATION <b>STR</b>							

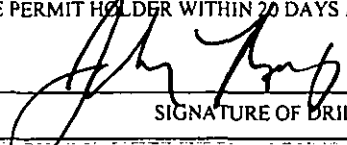
5. SEAL AND PUMP	TYPE OF PUMP: <input type="checkbox"/> SUBMERSIBLE <input type="checkbox"/> JET <input type="checkbox"/> NO PUMP - WELL NOT EQUIPPED <input type="checkbox"/> TURBINE <input type="checkbox"/> CYLINDER <input type="checkbox"/> OTHER - SPECIFY: <u>unknown</u>						
	ANNULAR SEAL AND GRAVEL PACK	DEPTH (FT) FROM TO		BORE HOLE DIA. (IN)	MATERIAL TYPE AND SIZE	AMOUNT (CUBIC FT)	METHOD OF PLACEMENT
		0 20		12	grout / cement	8	top

DEPTH (FT)		THICKNESS (FT)	COLOR AND TYPE OF MATERIAL ENCOUNTERED (INCLUDE WATER-BEARING CAVITIES OR FRACTURE ZONES)	WATER BEARING?
FROM	TO			
0	7	7	topsoil	<input type="checkbox"/> YES <input checked="" type="checkbox"/> NO
7	18	11	caliche	<input type="checkbox"/> YES <input checked="" type="checkbox"/> NO
18	65	47	sand	<input checked="" type="checkbox"/> YES <input type="checkbox"/> NO
65	80	15	rock	<input type="checkbox"/> YES <input checked="" type="checkbox"/> NO
80	95	15	red clay	<input checked="" type="checkbox"/> YES <input type="checkbox"/> NO
95	110	15	sand	<input checked="" type="checkbox"/> YES <input type="checkbox"/> NO
110	230	120	red clay	<input checked="" type="checkbox"/> YES <input type="checkbox"/> NO
230	236	6	sand	<input checked="" type="checkbox"/> YES <input type="checkbox"/> NO
236	310	74	red clay	<input checked="" type="checkbox"/> YES <input type="checkbox"/> NO
310	362	52	sand clay	<input checked="" type="checkbox"/> YES <input type="checkbox"/> NO
362	383	21	red clay	<input checked="" type="checkbox"/> YES <input type="checkbox"/> NO
383	391	8	sand	<input checked="" type="checkbox"/> YES <input type="checkbox"/> NO
391	410	19	red clay	<input checked="" type="checkbox"/> YES <input type="checkbox"/> NO
410	416	6	sand	<input checked="" type="checkbox"/> YES <input type="checkbox"/> NO
416	513	97	red clay	<input checked="" type="checkbox"/> YES <input type="checkbox"/> NO
513	520	107	sand	<input checked="" type="checkbox"/> YES <input type="checkbox"/> NO
520	590	70	red clay	<input checked="" type="checkbox"/> YES <input type="checkbox"/> NO

ATTACH ADDITIONAL PAGES AS NEEDED TO FULLY DESCRIBE THE GEOLOGIC LOG OF THE WELL

7. TEST & ADDITIONAL INFO	WELL TEST	METHOD: <input type="checkbox"/> BAILER <input type="checkbox"/> PUMP <input type="checkbox"/> AIR LIFT <input type="checkbox"/> OTHER - SPECIFY: <u>NT/A</u>
	TEST RESULTS - ATTACH A COPY OF DATA COLLECTED DURING WELL TESTING, INCLUDING START TIME, END TIME, AND A TABLE SHOWING DISCHARGE AND DRAWDOWN OVER THE TESTING PERIOD.	
ADDITIONAL STATEMENTS OR EXPLANATIONS:		

STATE ENGINEER OF ILLINOIS  
NOV 21 10 10 AM '11

8. SIGNATURE	THE UNDERSIGNED HEREBY CERTIFIES THAT, TO THE BEST OF HIS OR HER KNOWLEDGE AND BELIEF, THE FOREGOING IS A TRUE AND CORRECT RECORD OF THE ABOVE DESCRIBED HOLE AND THAT HE OR SHE WILL FILE THIS WELL RECORD WITH THE STATE ENGINEER AND THE PERMIT HOLDER WITHIN 20 DAYS AFTER COMPLETION OF WELL DRILLING:	
		11-19-12
	SIGNATURE OF DRILLER	DATE

FOR USE INTERNAL USE		WELL RECORD & LOG (Version 6/9/08)	
FILE NUMBER	<u>C-35582</u>	POD NUMBER	
LOCATION	<u>5TR</u>	TRN NUMBER	<u>570107</u>
			PAGE 2 OF 2



# WELL RECORD & LOG

OFFICE OF THE STATE ENGINEER

[www.ose.state.nm.us](http://www.ose.state.nm.us)

<b>1. GENERAL AND WELL LOCATION</b>	OSE POD NO. (WELL NO.) Pod 1		WELL TAG ID NO.		OSE FILE NO(S). C-4923	
	WELL OWNER NAME(S) Devon Energy				PHONE (OPTIONAL)	
	WELL OWNER MAILING ADDRESS 5315 Buena Vista Drive				CITY Carlsbad	STATE NM
					ZIP 88220	
WELL LOCATION (FROM GPS)		DEGREES LATITUDE 32	MINUTES 18	SECONDS 43.36	N	
		LONGITUDE 103	33	58.33	W	
* ACCURACY REQUIRED: ONE TENTH OF A SECOND						
* DATUM REQUIRED: WGS 84						
DESCRIPTION RELATING WELL LOCATION TO STREET ADDRESS AND COMMON LANDMARKS - PLSS (SECTION, TOWNSHIP, RANGE) WHERE AVAILABLE S15 T23s R33e						

<b>2. DRILLING &amp; CASING INFORMATION</b>	LICENSE NO. WD-1862		NAME OF LICENSED DRILLER James Hawley			NAME OF WELL DRILLING COMPANY H&R Enterprises, LLC		
	DRILLING STARTED 2-3-25		DRILLING ENDED 2-3-25	DEPTH OF COMPLETED WELL (FT) 105'		BORE HOLE DEPTH (FT) 105'	DEPTH WATER FIRST ENCOUNTERED (FT) N/A	
	COMPLETED WELL IS: <input type="checkbox"/> ARTESIAN *add Centralizer info below <input checked="" type="checkbox"/> DRY HOLE <input type="checkbox"/> SHALLOW (UNCONFINED)					STATIC WATER LEVEL IN COMPLETED WELL (FT) N/A	DATE STATIC MEASURED 2-10-25	
	DRILLING FLUID: <input checked="" type="checkbox"/> AIR <input type="checkbox"/> MUD ADDITIVES - SPECIFY:							
	DRILLING METHOD: <input checked="" type="checkbox"/> ROTARY <input type="checkbox"/> HAMMER <input type="checkbox"/> CABLE TOOL <input type="checkbox"/> OTHER - SPECIFY:						CHECK HERE IF PITLESS ADAPTER IS INSTALLED <input type="checkbox"/>	
	DEPTH (feet bgl)		BORE HOLE DIAM (inches)	CASING MATERIAL AND/OR GRADE (include each casing string, and note sections of screen)	CASING CONNECTION TYPE (add coupling diameter)	CASING INSIDE DIAM. (inches)	CASING WALL THICKNESS (inches)	SLOT SIZE (inches)
	FROM	TO						
	0'	105'	5'	No casing left in hole				

<b>3. ANNULAR MATERIAL</b>	DEPTH (feet bgl)		BORE HOLE DIAM. (inches)	LIST ANNULAR SEAL MATERIAL AND GRAVEL PACK SIZE-RANGE BY INTERVAL <i>*if using Centralizers for Artesian wells- indicate the spacing below</i>	AMOUNT (cubic feet)	METHOD OF PLACEMENT
	FROM	TO				
				N/A		

FOR OSE INTERNAL USE			WR-20 WELL RECORD & LOG (Version 09/22/2022)		
FILE NO.		POD NO.		TRN NO.	
LOCATION			WELL TAG ID NO.		PAGE 1 OF 2





USGS Home  
 Contact USGS  
 Search USGS

National Water Information System: Web Interface

USGS Water Resources

Data Category:  Geographic Area:

Click to hide News Bulletins

- Explore the *NEW* [USGS National Water Dashboard](#) interactive map to access real-time water data from over 13,500 stations nationwide.
- [Full News](#)

Groundwater levels for New Mexico

Click to hide state-specific text

Important: [Next Generation Monitoring Location Page](#)

Search Results -- 1 sites found

Agency code = usgs  
 site\_no list = 

- 321843103315101

Minimum number of levels = 1  
[Save file of selected sites](#) to local disk for future upload

**USGS 321843103315101 23S.33E.12.312423**

Lea County, New Mexico  
 Latitude 32°19'06", Longitude 103°31'53" NAD83  
 Land-surface elevation 3,531.00 feet above NGVD29  
 The depth of the well is 400 feet below land surface.  
 This well is completed in the Other aquifers (N9999OTHER) national aquifer.  
 This well is completed in the Santa Rosa Sandstone (231SNRS) local aquifer.

Output formats

<a href="#">Table of data</a>
<a href="#">Tab-separated data</a>
<a href="#">Graph of data</a>
<a href="#">Reselect period</a>

Date	Time	? Water-level date-time accuracy	? Parameter code	Water level, feet below land surface	Water level, feet above specific vertical datum	Referenced vertical datum	? Status	? Method of measurement	? Measuring agency	? Source measu
1965-11-03			D 62610		3184.75	NGVD29	P		Z	
1965-11-03			D 62611		3186.41	NAVD88	P		Z	
1965-11-03			D 72019	346.25			P		Z	
1968-06-11			D 62610		3196.61	NGVD29	P		Z	
1968-06-11			D 62611		3198.27	NAVD88	P		Z	
1968-06-11			D 72019	334.39			P		Z	
1971-01-13			D 62610		3204.30	NGVD29	1		Z	
1971-01-13			D 62611		3205.96	NAVD88	1		Z	
1971-01-13			D 72019	326.70			1		Z	
1972-09-21			D 62610		3179.30	NGVD29	P		Z	
1972-09-21			D 62611		3180.96	NAVD88	P		Z	
1972-09-21			D 72019	351.70			P		Z	
1976-12-08			D 62610		3185.78	NGVD29	P		Z	
1976-12-08			D 62611		3187.44	NAVD88	P		Z	

Date	Time	? Water-level date-time accuracy	? Parameter code	Water level, feet below land surface	Water level, feet above specific vertical datum	Referenced vertical datum	? Status	? Method of measurement	? Measuring agency	? Source measur
1976-12-08			D 72019	345.22			P		Z	
1981-03-27			D 62610		3200.08	NGVD29	P		Z	
1981-03-27			D 62611		3201.74	NAVD88	P		Z	
1981-03-27			D 72019	330.92			P		Z	
1986-04-16			D 62610		3205.18	NGVD29	1		Z	
1986-04-16			D 62611		3206.84	NAVD88	1		Z	
1986-04-16			D 72019	325.82			1		Z	
1991-05-30			D 62610		3205.68	NGVD29	1		Z	
1991-05-30			D 62611		3207.34	NAVD88	1		Z	
1991-05-30			D 72019	325.32			1		Z	
1996-03-13			D 62610		3206.05	NGVD29	1		S	
1996-03-13			D 62611		3207.71	NAVD88	1		S	
1996-03-13			D 72019	324.95			1		S	

Explanation

Section	Code	Description
Water-level date-time accuracy	D	Date is accurate to the Day
Parameter code	62610	Groundwater level above NGVD 1929, feet
Parameter code	62611	Groundwater level above NAVD 1988, feet
Parameter code	72019	Depth to water level, feet below land surface
Referenced vertical datum	NAVD88	North American Vertical Datum of 1988
Referenced vertical datum	NGVD29	National Geodetic Vertical Datum of 1929
Status	1	Static
Status	P	Pumping
Method of measurement	S	Steel-tape measurement.
Method of measurement	Z	Other.
Measuring agency		Not determined
Source of measurement		Not determined
Water-level approval status	A	Approved for publication -- Processing and review completed.

- [Questions about sites/data?](#)
- [Feedback on this web site](#)
- [Automated retrievals](#)
- [Help](#)
- [Data Tips](#)
- [Explanation of terms](#)
- [Subscribe for system changes](#)
- [News](#)

Accessibility FOIA Privacy Policies and Notices

[U.S. Department of the Interior](#) | [U.S. Geological Survey](#)

**Title: Groundwater for New Mexico: Water Levels**

**URL: [https://nwis.waterdata.usgs.gov/nm/nwis/gwlevels?](https://nwis.waterdata.usgs.gov/nm/nwis/gwlevels?site_no=321843103315101&agency_cd=USGS&format=html)**

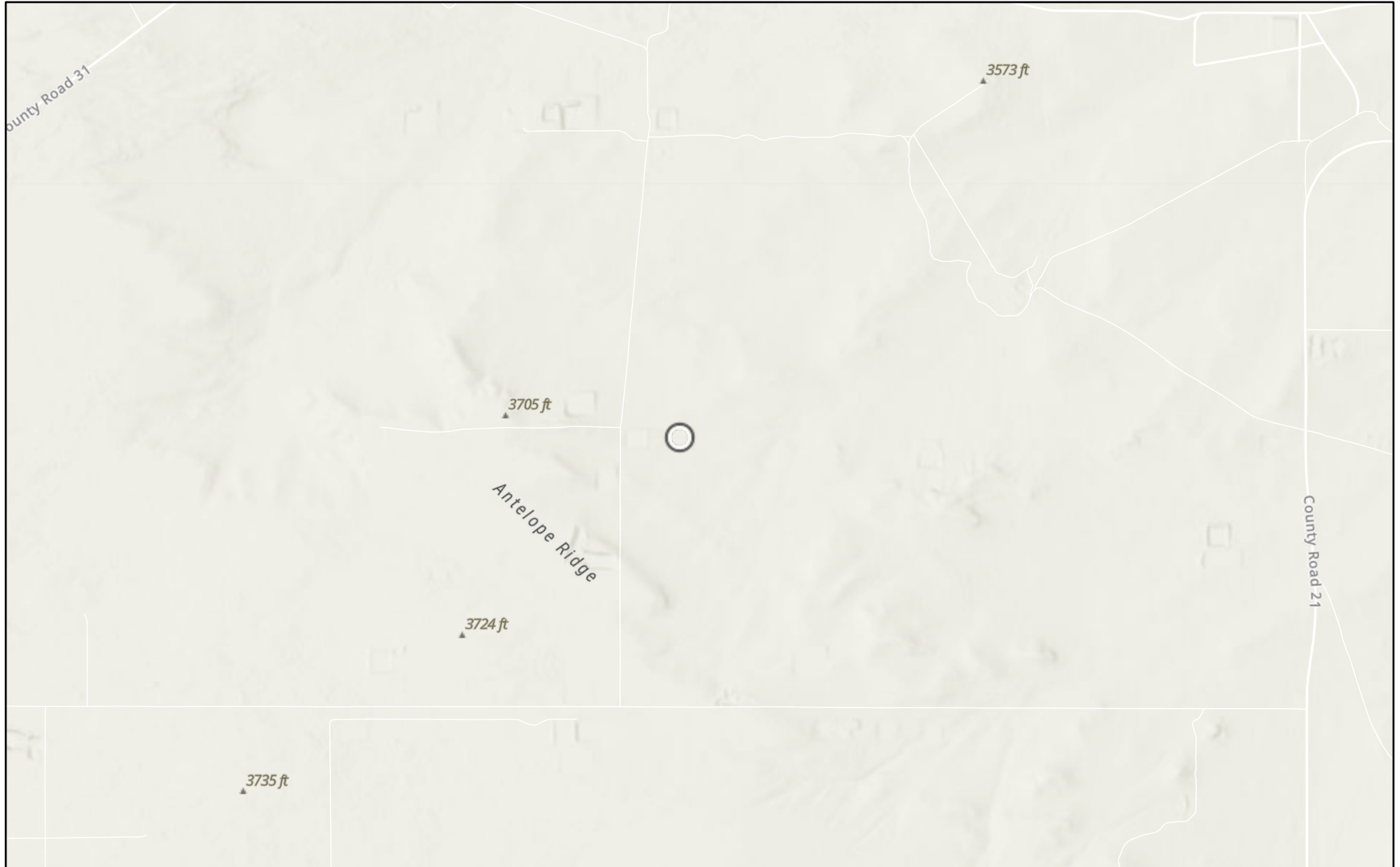


Page Contact Information: [New Mexico Water Data Maintainer](#)

Page Last Modified: 2022-05-30 10:48:24 EDT

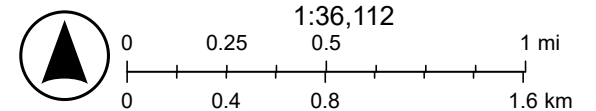
0.28 0.23 nadww02

# DRIVER 14 STATE COM #502H



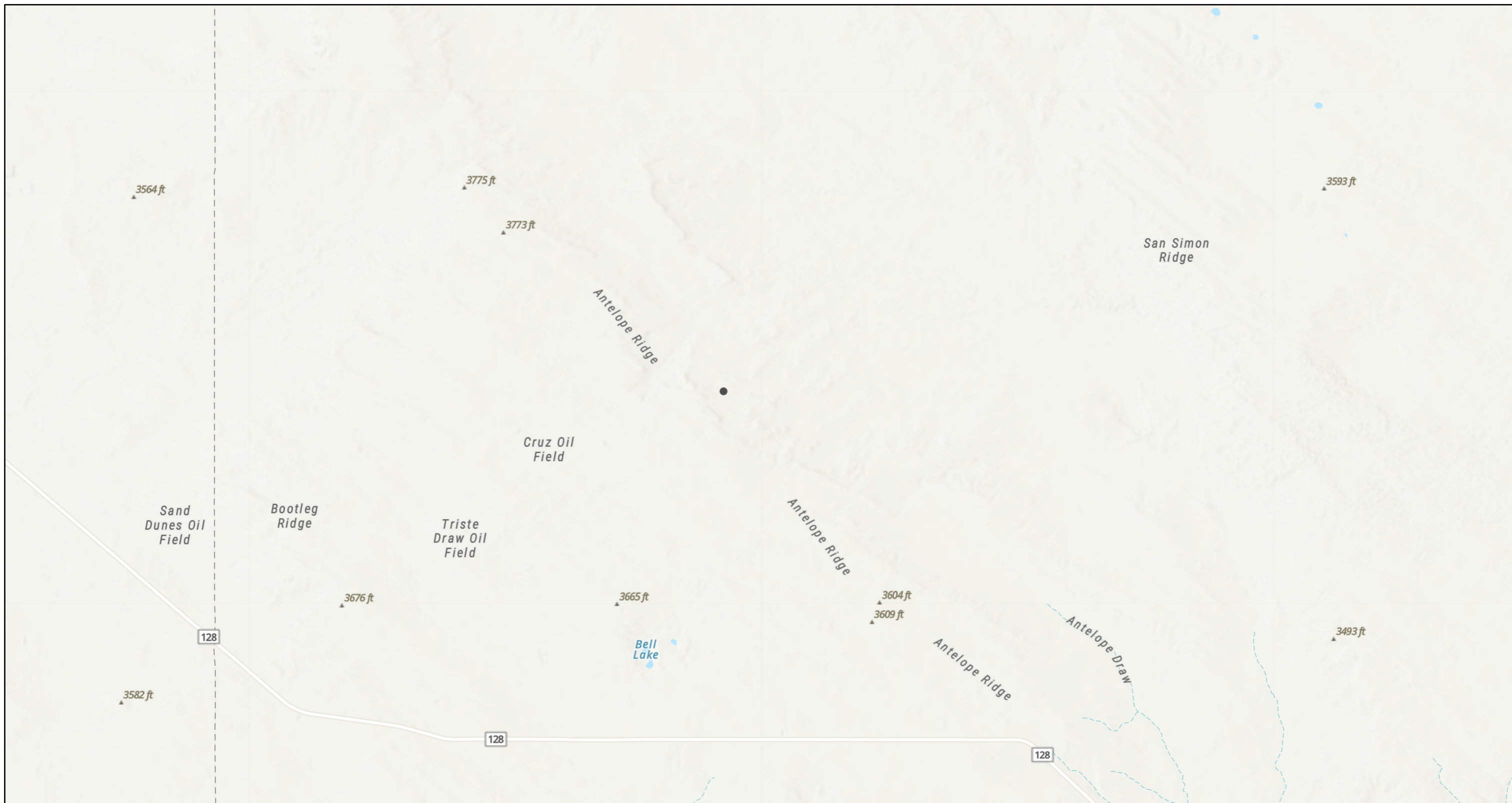
10/13/2025

World\_Hillshade



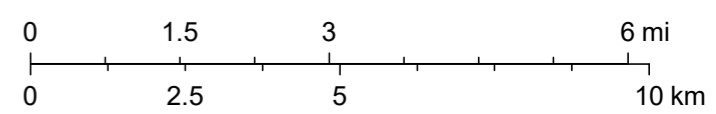
Esri, NASA, NGA, USGS, FEMA, Sources: Esri, TomTom, Garmin, FAO, NOAA, USGS, (c) OpenStreetMap contributors, and the GIS User

# DRIVER 14 STATE COM #502H



10/13/2025, 12:14:35 PM

1:144,448



Esri, NASA, NGA, USGS, Sources: Esri, TomTom, Garmin, FAO, NOAA, USGS, © OpenStreetMap contributors, and the GIS User Community

## APPENDIX E

CARMONA RESOURCES





PHONE (575) 393-2326 ° 101 E. MARLAND ° HOBBS, NM 88240

October 27, 2025

CONNER MOEHRING  
CARMONA RESOURCES  
310 W WALL ST, SUITE 500  
MIDLAND, TX 79701

RE: DRIVER 14 STATE #502

Enclosed are the results of analyses for samples received by the laboratory on 10/22/25 15:10.

Cardinal Laboratories is accredited through Texas NELAP under certificate number TX-C25-00101. Accreditation applies to drinking water, non-potable water and solid and chemical materials. All accredited analytes are denoted by an asterisk (\*). For a complete list of accredited analytes and matrices visit the TCEQ website at [www.tceq.texas.gov/field/qa/lab\\_accred\\_certif.html](http://www.tceq.texas.gov/field/qa/lab_accred_certif.html).

Cardinal Laboratories is accredited through the State of Colorado Department of Public Health and Environment for:

Method EPA 552.2	Haloacetic Acids (HAA-5)
Method EPA 524.2	Total Trihalomethanes (TTHM)
Method EPA 524.4	Regulated VOCs (V1, V2, V3)

Accreditation applies to public drinking water matrices.

This report meets NELAP requirements and is made up of a cover page, analytical results, and a copy of the original chain-of-custody. If you have any questions concerning this report, please feel free to contact me.

Sincerely,

Celey D. Keene  
Lab Director/Quality Manager



PHONE (575) 393-2326 ° 101 E. MARLAND ° HOBBS, NM 88240

**Analytical Results For:**

CARMONA RESOURCES  
 CONNER MOEHRING  
 310 W WALL ST, SUITE 500  
 MIDLAND TX, 79701  
 Fax To:

Received:	10/22/2025	Sampling Date:	10/20/2025
Reported:	10/27/2025	Sampling Type:	Soil
Project Name:	DRIVER 14 STATE #502	Sampling Condition:	Cool & Intact
Project Number:	3039	Sample Received By:	Tamara Oldaker
Project Location:	EOG-LEA COUNTY, NM		

**Sample ID: S - 1 (0-1') (H256661-01)**

BTEX 8021B		mg/kg		Analyzed By: JH					
Analyte	Result	Reporting Limit	Analyzed	Method Blank	BS	% Recovery	True Value QC	RPD	Qualifier
Benzene*	<0.500	0.500	10/23/2025	ND	2.27	113	2.00	1.77	
<b>Toluene*</b>	<b>14.1</b>	0.500	10/23/2025	ND	2.20	110	2.00	5.18	QM-07
<b>Ethylbenzene*</b>	<b>14.0</b>	0.500	10/23/2025	ND	2.38	119	2.00	9.69	
<b>Total Xylenes*</b>	<b>66.1</b>	1.50	10/23/2025	ND	7.44	124	6.00	10.8	
<b>Total BTEX</b>	<b>94.2</b>	3.00	10/23/2025	ND					

Surrogate: 4-Bromofluorobenzene (PID) 114 % 70.4-141

Chloride, SM4500Cl-B		mg/kg		Analyzed By: HM					
Analyte	Result	Reporting Limit	Analyzed	Method Blank	BS	% Recovery	True Value QC	RPD	Qualifier
<b>Chloride</b>	<b>1740</b>	16.0	10/23/2025	ND	416	104	400	3.77	

TPH 8015M		mg/kg		Analyzed By: MS						S-04
Analyte	Result	Reporting Limit	Analyzed	Method Blank	BS	% Recovery	True Value QC	RPD	Qualifier	
<b>GRO C6-C10*</b>	<b>962</b>	10.0	10/24/2025	ND	204	102	200	0.179	QM-07	
<b>DRO &gt;C10-C28*</b>	<b>6080</b>	10.0	10/24/2025	ND	212	106	200	1.97	QM-07	
<b>EXT DRO &gt;C28-C36</b>	<b>1020</b>	10.0	10/24/2025	ND						

Surrogate: 1-Chlorooctane 200 % 52.4-130

Surrogate: 1-Chlorooctadecane 144 % 39.9-141

Cardinal Laboratories

\*=Accredited Analyte

PLEASE NOTE: Liability and Damages. Cardinal's liability and client's exclusive remedy for any claim arising, whether based in contract or tort, shall be limited to the amount paid by client for analyses. All claims, including those for negligence and any other cause whatsoever shall be deemed waived unless made in writing and received by Cardinal within thirty (30) days after completion of the applicable service. In no event shall Cardinal be liable for incidental or consequential damages, including, without limitation, business interruptions, loss of use, or loss of profits incurred by client, its subsidiaries, affiliates or successors arising out of or related to the performance of the services hereunder by Cardinal, regardless of whether such claim is based upon any of the above stated reasons or otherwise. Results relate only to the samples identified above. This report shall not be reproduced except in full with written approval of Cardinal Laboratories.

Celey D. Keene, Lab Director/Quality Manager



PHONE (575) 393-2326 ° 101 E. MARLAND ° HOBBS, NM 88240

**Analytical Results For:**

CARMONA RESOURCES  
 CONNER MOEHRING  
 310 W WALL ST, SUITE 500  
 MIDLAND TX, 79701  
 Fax To:

Received:	10/22/2025	Sampling Date:	10/20/2025
Reported:	10/27/2025	Sampling Type:	Soil
Project Name:	DRIVER 14 STATE #502	Sampling Condition:	Cool & Intact
Project Number:	3039	Sample Received By:	Tamara Oldaker
Project Location:	EOG-LEA COUNTY, NM		

**Sample ID: S - 1 (1.5') (H256661-02)**

BTEX 8021B		mg/kg		Analyzed By: JH					
Analyte	Result	Reporting Limit	Analyzed	Method Blank	BS	% Recovery	True Value QC	RPD	Qualifier
Benzene*	<0.050	0.050	10/23/2025	ND	2.27	113	2.00	1.77	
Toluene*	<0.050	0.050	10/23/2025	ND	2.20	110	2.00	5.18	
Ethylbenzene*	<0.050	0.050	10/23/2025	ND	2.38	119	2.00	9.69	
Total Xylenes*	<0.150	0.150	10/23/2025	ND	7.44	124	6.00	10.8	
Total BTEX	<0.300	0.300	10/23/2025	ND					

Surrogate: 4-Bromofluorobenzene (PID) 111 % 70.4-141

Chloride, SM4500Cl-B		mg/kg		Analyzed By: HM					
Analyte	Result	Reporting Limit	Analyzed	Method Blank	BS	% Recovery	True Value QC	RPD	Qualifier
Chloride	224	16.0	10/23/2025	ND	416	104	400	3.77	

TPH 8015M		mg/kg		Analyzed By: MS					
Analyte	Result	Reporting Limit	Analyzed	Method Blank	BS	% Recovery	True Value QC	RPD	Qualifier
GRO C6-C10*	10.8	10.0	10/24/2025	ND	204	102	200	0.179	
DRO >C10-C28*	332	10.0	10/24/2025	ND	212	106	200	1.97	
EXT DRO >C28-C36	75.4	10.0	10/24/2025	ND					

Surrogate: 1-Chlorooctane 91.1 % 52.4-130

Surrogate: 1-Chlorooctadecane 93.2 % 39.9-141

Cardinal Laboratories

\*=Accredited Analyte

PLEASE NOTE: Liability and Damages. Cardinal's liability and client's exclusive remedy for any claim arising, whether based in contract or tort, shall be limited to the amount paid by client for analyses. All claims, including those for negligence and any other cause whatsoever shall be deemed waived unless made in writing and received by Cardinal within thirty (30) days after completion of the applicable service. In no event shall Cardinal be liable for incidental or consequential damages, including, without limitation, business interruptions, loss of use, or loss of profits incurred by client, its subsidiaries, affiliates or successors arising out of or related to the performance of the services hereunder by Cardinal, regardless of whether such claim is based upon any of the above stated reasons or otherwise. Results relate only to the samples identified above. This report shall not be reproduced except in full with written approval of Cardinal Laboratories.

Celey D. Keene, Lab Director/Quality Manager



PHONE (575) 393-2326 ° 101 E. MARLAND ° HOBBS, NM 88240

**Analytical Results For:**

CARMONA RESOURCES  
 CONNER MOEHRING  
 310 W WALL ST, SUITE 500  
 MIDLAND TX, 79701  
 Fax To:

Received:	10/22/2025	Sampling Date:	10/20/2025
Reported:	10/27/2025	Sampling Type:	Soil
Project Name:	DRIVER 14 STATE #502	Sampling Condition:	Cool & Intact
Project Number:	3039	Sample Received By:	Tamara Oldaker
Project Location:	EOG-LEA COUNTY, NM		

**Sample ID: S - 1 (2') (H256661-03)**

BTEX 8021B		mg/kg		Analyzed By: JH					
Analyte	Result	Reporting Limit	Analyzed	Method Blank	BS	% Recovery	True Value QC	RPD	Qualifier
Benzene*	<0.050	0.050	10/23/2025	ND	2.27	113	2.00	1.77	
Toluene*	<0.050	0.050	10/23/2025	ND	2.20	110	2.00	5.18	
Ethylbenzene*	<0.050	0.050	10/23/2025	ND	2.38	119	2.00	9.69	
Total Xylenes*	<0.150	0.150	10/23/2025	ND	7.44	124	6.00	10.8	
Total BTEX	<0.300	0.300	10/23/2025	ND					

Surrogate: 4-Bromofluorobenzene (PID) 112 % 70.4-141

Chloride, SM4500CI-B		mg/kg		Analyzed By: HM					
Analyte	Result	Reporting Limit	Analyzed	Method Blank	BS	% Recovery	True Value QC	RPD	Qualifier
<b>Chloride</b>	<b>112</b>	16.0	10/23/2025	ND	416	104	400	3.77	

TPH 8015M		mg/kg		Analyzed By: MS					
Analyte	Result	Reporting Limit	Analyzed	Method Blank	BS	% Recovery	True Value QC	RPD	Qualifier
GRO C6-C10*	<10.0	10.0	10/24/2025	ND	204	102	200	0.179	
<b>DRO &gt;C10-C28*</b>	<b>98.1</b>	10.0	10/24/2025	ND	212	106	200	1.97	
<b>EXT DRO &gt;C28-C36</b>	<b>19.8</b>	10.0	10/24/2025	ND					

Surrogate: 1-Chlorooctane 87.3 % 52.4-130

Surrogate: 1-Chlorooctadecane 86.6 % 39.9-141

Cardinal Laboratories

\*=Accredited Analyte

PLEASE NOTE: Liability and Damages. Cardinal's liability and client's exclusive remedy for any claim arising, whether based in contract or tort, shall be limited to the amount paid by client for analyses. All claims, including those for negligence and any other cause whatsoever shall be deemed waived unless made in writing and received by Cardinal within thirty (30) days after completion of the applicable service. In no event shall Cardinal be liable for incidental or consequential damages, including, without limitation, business interruptions, loss of use, or loss of profits incurred by client, its subsidiaries, affiliates or successors arising out of or related to the performance of the services hereunder by Cardinal, regardless of whether such claim is based upon any of the above stated reasons or otherwise. Results relate only to the samples identified above. This report shall not be reproduced except in full with written approval of Cardinal Laboratories.

Celey D. Keene, Lab Director/Quality Manager



PHONE (575) 393-2326 ° 101 E. MARLAND ° HOBBS, NM 88240

**Analytical Results For:**

CARMONA RESOURCES  
 CONNER MOEHRING  
 310 W WALL ST, SUITE 500  
 MIDLAND TX, 79701  
 Fax To:

Received:	10/22/2025	Sampling Date:	10/20/2025
Reported:	10/27/2025	Sampling Type:	Soil
Project Name:	DRIVER 14 STATE #502	Sampling Condition:	Cool & Intact
Project Number:	3039	Sample Received By:	Tamara Oldaker
Project Location:	EOG-LEA COUNTY, NM		

**Sample ID: S - 1 (3') (H256661-04)**

BTEX 8021B		mg/kg		Analyzed By: JH					
Analyte	Result	Reporting Limit	Analyzed	Method Blank	BS	% Recovery	True Value QC	RPD	Qualifier
Benzene*	<0.050	0.050	10/23/2025	ND	2.27	113	2.00	1.77	
Toluene*	<0.050	0.050	10/23/2025	ND	2.20	110	2.00	5.18	
Ethylbenzene*	<0.050	0.050	10/23/2025	ND	2.38	119	2.00	9.69	
Total Xylenes*	<0.150	0.150	10/23/2025	ND	7.44	124	6.00	10.8	
Total BTEX	<0.300	0.300	10/23/2025	ND					

Surrogate: 4-Bromofluorobenzene (PID) 112 % 70.4-141

Chloride, SM4500Cl-B		mg/kg		Analyzed By: HM					
Analyte	Result	Reporting Limit	Analyzed	Method Blank	BS	% Recovery	True Value QC	RPD	Qualifier
Chloride	<16.0	16.0	10/23/2025	ND	416	104	400	3.77	

TPH 8015M		mg/kg		Analyzed By: MS					
Analyte	Result	Reporting Limit	Analyzed	Method Blank	BS	% Recovery	True Value QC	RPD	Qualifier
GRO C6-C10*	<10.0	10.0	10/24/2025	ND	204	102	200	0.179	
<b>DRO &gt;C10-C28*</b>	<b>27.8</b>	10.0	10/24/2025	ND	212	106	200	1.97	
EXT DRO >C28-C36	<10.0	10.0	10/24/2025	ND					

Surrogate: 1-Chlorooctane 85.6 % 52.4-130

Surrogate: 1-Chlorooctadecane 83.9 % 39.9-141

Cardinal Laboratories

\*=Accredited Analyte

PLEASE NOTE: Liability and Damages. Cardinal's liability and client's exclusive remedy for any claim arising, whether based in contract or tort, shall be limited to the amount paid by client for analyses. All claims, including those for negligence and any other cause whatsoever shall be deemed waived unless made in writing and received by Cardinal within thirty (30) days after completion of the applicable service. In no event shall Cardinal be liable for incidental or consequential damages, including, without limitation, business interruptions, loss of use, or loss of profits incurred by client, its subsidiaries, affiliates or successors arising out of or related to the performance of the services hereunder by Cardinal, regardless of whether such claim is based upon any of the above stated reasons or otherwise. Results relate only to the samples identified above. This report shall not be reproduced except in full with written approval of Cardinal Laboratories.

Celey D. Keene, Lab Director/Quality Manager



PHONE (575) 393-2326 ° 101 E. MARLAND ° HOBBS, NM 88240

**Analytical Results For:**

CARMONA RESOURCES  
 CONNER MOEHRING  
 310 W WALL ST, SUITE 500  
 MIDLAND TX, 79701  
 Fax To:

Received:	10/22/2025	Sampling Date:	10/20/2025
Reported:	10/27/2025	Sampling Type:	Soil
Project Name:	DRIVER 14 STATE #502	Sampling Condition:	Cool & Intact
Project Number:	3039	Sample Received By:	Tamara Oldaker
Project Location:	EOG-LEA COUNTY, NM		

**Sample ID: S - 1 (4') (H256661-05)**

BTEX 8021B		mg/kg		Analyzed By: JH					
Analyte	Result	Reporting Limit	Analyzed	Method Blank	BS	% Recovery	True Value QC	RPD	Qualifier
Benzene*	<0.050	0.050	10/23/2025	ND	2.27	113	2.00	1.77	
Toluene*	<0.050	0.050	10/23/2025	ND	2.20	110	2.00	5.18	
Ethylbenzene*	<0.050	0.050	10/23/2025	ND	2.38	119	2.00	9.69	
Total Xylenes*	<0.150	0.150	10/23/2025	ND	7.44	124	6.00	10.8	
Total BTEX	<0.300	0.300	10/23/2025	ND					

Surrogate: 4-Bromofluorobenzene (PID) 112 % 70.4-141

Chloride, SM4500Cl-B		mg/kg		Analyzed By: HM					
Analyte	Result	Reporting Limit	Analyzed	Method Blank	BS	% Recovery	True Value QC	RPD	Qualifier
Chloride	<16.0	16.0	10/23/2025	ND	416	104	400	3.77	

TPH 8015M		mg/kg		Analyzed By: MS					
Analyte	Result	Reporting Limit	Analyzed	Method Blank	BS	% Recovery	True Value QC	RPD	Qualifier
GRO C6-C10*	<10.0	10.0	10/24/2025	ND	204	102	200	0.179	
DRO >C10-C28*	<10.0	10.0	10/24/2025	ND	212	106	200	1.97	
EXT DRO >C28-C36	<10.0	10.0	10/24/2025	ND					

Surrogate: 1-Chlorooctane 90.4 % 52.4-130

Surrogate: 1-Chlorooctadecane 86.0 % 39.9-141

Cardinal Laboratories

\*=Accredited Analyte

PLEASE NOTE: Liability and Damages. Cardinal's liability and client's exclusive remedy for any claim arising, whether based in contract or tort, shall be limited to the amount paid by client for analyses. All claims, including those for negligence and any other cause whatsoever shall be deemed waived unless made in writing and received by Cardinal within thirty (30) days after completion of the applicable service. In no event shall Cardinal be liable for incidental or consequential damages, including, without limitation, business interruptions, loss of use, or loss of profits incurred by client, its subsidiaries, affiliates or successors arising out of or related to the performance of the services hereunder by Cardinal, regardless of whether such claim is based upon any of the above stated reasons or otherwise. Results relate only to the samples identified above. This report shall not be reproduced except in full with written approval of Cardinal Laboratories.

Celey D. Keene, Lab Director/Quality Manager



PHONE (575) 393-2326 ° 101 E. MARLAND ° HOBBS, NM 88240

**Analytical Results For:**

CARMONA RESOURCES  
 CONNER MOEHRING  
 310 W WALL ST, SUITE 500  
 MIDLAND TX, 79701  
 Fax To:

Received:	10/22/2025	Sampling Date:	10/20/2025
Reported:	10/27/2025	Sampling Type:	Soil
Project Name:	DRIVER 14 STATE #502	Sampling Condition:	Cool & Intact
Project Number:	3039	Sample Received By:	Tamara Oldaker
Project Location:	EOG-LEA COUNTY, NM		

**Sample ID: S - 2 (0-1') (H256661-06)**

BTEX 8021B		mg/kg		Analyzed By: JH					
Analyte	Result	Reporting Limit	Analyzed	Method Blank	BS	% Recovery	True Value QC	RPD	Qualifier
Benzene*	<0.200	0.200	10/23/2025	ND	2.27	113	2.00	1.77	
<b>Toluene*</b>	<b>11.9</b>	0.200	10/23/2025	ND	2.20	110	2.00	5.18	
<b>Ethylbenzene*</b>	<b>12.0</b>	0.200	10/23/2025	ND	2.38	119	2.00	9.69	
<b>Total Xylenes*</b>	<b>49.6</b>	0.600	10/23/2025	ND	7.44	124	6.00	10.8	
<b>Total BTEX</b>	<b>73.5</b>	1.20	10/23/2025	ND					

Surrogate: 4-Bromofluorobenzene (PID) 123 % 70.4-141

Chloride, SM4500CI-B		mg/kg		Analyzed By: HM					
Analyte	Result	Reporting Limit	Analyzed	Method Blank	BS	% Recovery	True Value QC	RPD	Qualifier
<b>Chloride</b>	<b>768</b>	16.0	10/23/2025	ND	416	104	400	3.77	

TPH 8015M		mg/kg		Analyzed By: MS						S-04
Analyte	Result	Reporting Limit	Analyzed	Method Blank	BS	% Recovery	True Value QC	RPD	Qualifier	
<b>GRO C6-C10*</b>	<b>516</b>	10.0	10/24/2025	ND	204	102	200	0.179		
<b>DRO &gt;C10-C28*</b>	<b>2560</b>	10.0	10/24/2025	ND	212	106	200	1.97		
<b>EXT DRO &gt;C28-C36</b>	<b>485</b>	10.0	10/24/2025	ND						

Surrogate: 1-Chlorooctane 166 % 52.4-130

Surrogate: 1-Chlorooctadecane 143 % 39.9-141

Cardinal Laboratories

\*=Accredited Analyte

PLEASE NOTE: Liability and Damages. Cardinal's liability and client's exclusive remedy for any claim arising, whether based in contract or tort, shall be limited to the amount paid by client for analyses. All claims, including those for negligence and any other cause whatsoever shall be deemed waived unless made in writing and received by Cardinal within thirty (30) days after completion of the applicable service. In no event shall Cardinal be liable for incidental or consequential damages, including, without limitation, business interruptions, loss of use, or loss of profits incurred by client, its subsidiaries, affiliates or successors arising out of or related to the performance of the services hereunder by Cardinal, regardless of whether such claim is based upon any of the above stated reasons or otherwise. Results relate only to the samples identified above. This report shall not be reproduced except in full with written approval of Cardinal Laboratories.

Celey D. Keene, Lab Director/Quality Manager



PHONE (575) 393-2326 ° 101 E. MARLAND ° HOBBS, NM 88240

**Analytical Results For:**

CARMONA RESOURCES  
 CONNER MOEHRING  
 310 W WALL ST, SUITE 500  
 MIDLAND TX, 79701  
 Fax To:

Received:	10/22/2025	Sampling Date:	10/20/2025
Reported:	10/27/2025	Sampling Type:	Soil
Project Name:	DRIVER 14 STATE #502	Sampling Condition:	Cool & Intact
Project Number:	3039	Sample Received By:	Tamara Oldaker
Project Location:	EOG-LEA COUNTY, NM		

**Sample ID: S - 2 (1.5') (H256661-07)**

BTEX 8021B		mg/kg		Analyzed By: JH					
Analyte	Result	Reporting Limit	Analyzed	Method Blank	BS	% Recovery	True Value QC	RPD	Qualifier
Benzene*	<0.050	0.050	10/23/2025	ND	2.27	113	2.00	1.77	
Toluene*	<0.050	0.050	10/23/2025	ND	2.20	110	2.00	5.18	
Ethylbenzene*	<0.050	0.050	10/23/2025	ND	2.38	119	2.00	9.69	
Total Xylenes*	<0.150	0.150	10/23/2025	ND	7.44	124	6.00	10.8	
Total BTEX	<0.300	0.300	10/23/2025	ND					

Surrogate: 4-Bromofluorobenzene (PID) 122 % 70.4-141

Chloride, SM4500Cl-B		mg/kg		Analyzed By: HM					
Analyte	Result	Reporting Limit	Analyzed	Method Blank	BS	% Recovery	True Value QC	RPD	Qualifier
Chloride	256	16.0	10/23/2025	ND	416	104	400	3.77	

TPH 8015M		mg/kg		Analyzed By: MS					
Analyte	Result	Reporting Limit	Analyzed	Method Blank	BS	% Recovery	True Value QC	RPD	Qualifier
GRO C6-C10*	10.4	10.0	10/24/2025	ND	204	102	200	0.179	
DRO >C10-C28*	290	10.0	10/24/2025	ND	212	106	200	1.97	
EXT DRO >C28-C36	62.8	10.0	10/24/2025	ND					

Surrogate: 1-Chlorooctane 89.0 % 52.4-130

Surrogate: 1-Chlorooctadecane 91.7 % 39.9-141

Cardinal Laboratories

\*=Accredited Analyte

PLEASE NOTE: Liability and Damages. Cardinal's liability and client's exclusive remedy for any claim arising, whether based in contract or tort, shall be limited to the amount paid by client for analyses. All claims, including those for negligence and any other cause whatsoever shall be deemed waived unless made in writing and received by Cardinal within thirty (30) days after completion of the applicable service. In no event shall Cardinal be liable for incidental or consequential damages, including, without limitation, business interruptions, loss of use, or loss of profits incurred by client, its subsidiaries, affiliates or successors arising out of or related to the performance of the services hereunder by Cardinal, regardless of whether such claim is based upon any of the above stated reasons or otherwise. Results relate only to the samples identified above. This report shall not be reproduced except in full with written approval of Cardinal Laboratories.

Celey D. Keene, Lab Director/Quality Manager



PHONE (575) 393-2326 ° 101 E. MARLAND ° HOBBS, NM 88240

**Analytical Results For:**

CARMONA RESOURCES  
 CONNER MOEHRING  
 310 W WALL ST, SUITE 500  
 MIDLAND TX, 79701  
 Fax To:

Received:	10/22/2025	Sampling Date:	10/20/2025
Reported:	10/27/2025	Sampling Type:	Soil
Project Name:	DRIVER 14 STATE #502	Sampling Condition:	Cool & Intact
Project Number:	3039	Sample Received By:	Tamara Oldaker
Project Location:	EOG-LEA COUNTY, NM		

**Sample ID: S - 2 (2') (H256661-08)**

BTEX 8021B		mg/kg		Analyzed By: JH					
Analyte	Result	Reporting Limit	Analyzed	Method Blank	BS	% Recovery	True Value QC	RPD	Qualifier
Benzene*	<0.050	0.050	10/23/2025	ND	2.27	113	2.00	1.77	
Toluene*	<0.050	0.050	10/23/2025	ND	2.20	110	2.00	5.18	
Ethylbenzene*	<0.050	0.050	10/23/2025	ND	2.38	119	2.00	9.69	
<b>Total Xylenes*</b>	<b>0.213</b>	0.150	10/23/2025	ND	7.44	124	6.00	10.8	
Total BTEX	<0.300	0.300	10/23/2025	ND					

Surrogate: 4-Bromofluorobenzene (PID) 121 % 70.4-141

Chloride, SM4500Cl-B		mg/kg		Analyzed By: HM					
Analyte	Result	Reporting Limit	Analyzed	Method Blank	BS	% Recovery	True Value QC	RPD	Qualifier
<b>Chloride</b>	<b>112</b>	16.0	10/23/2025	ND	416	104	400	3.77	

TPH 8015M		mg/kg		Analyzed By: MS					
Analyte	Result	Reporting Limit	Analyzed	Method Blank	BS	% Recovery	True Value QC	RPD	Qualifier
GRO C6-C10*	<10.0	10.0	10/24/2025	ND	204	102	200	0.179	
<b>DRO &gt;C10-C28*</b>	<b>130</b>	10.0	10/24/2025	ND	212	106	200	1.97	
<b>EXT DRO &gt;C28-C36</b>	<b>22.6</b>	10.0	10/24/2025	ND					

Surrogate: 1-Chlorooctane 84.0 % 52.4-130

Surrogate: 1-Chlorooctadecane 83.6 % 39.9-141

Cardinal Laboratories

\*=Accredited Analyte

PLEASE NOTE: Liability and Damages. Cardinal's liability and client's exclusive remedy for any claim arising, whether based in contract or tort, shall be limited to the amount paid by client for analyses. All claims, including those for negligence and any other cause whatsoever shall be deemed waived unless made in writing and received by Cardinal within thirty (30) days after completion of the applicable service. In no event shall Cardinal be liable for incidental or consequential damages, including, without limitation, business interruptions, loss of use, or loss of profits incurred by client, its subsidiaries, affiliates or successors arising out of or related to the performance of the services hereunder by Cardinal, regardless of whether such claim is based upon any of the above stated reasons or otherwise. Results relate only to the samples identified above. This report shall not be reproduced except in full with written approval of Cardinal Laboratories.

Celey D. Keene, Lab Director/Quality Manager



PHONE (575) 393-2326 ° 101 E. MARLAND ° HOBBS, NM 88240

**Analytical Results For:**

CARMONA RESOURCES  
 CONNER MOEHRING  
 310 W WALL ST, SUITE 500  
 MIDLAND TX, 79701  
 Fax To:

Received:	10/22/2025	Sampling Date:	10/20/2025
Reported:	10/27/2025	Sampling Type:	Soil
Project Name:	DRIVER 14 STATE #502	Sampling Condition:	Cool & Intact
Project Number:	3039	Sample Received By:	Tamara Oldaker
Project Location:	EOG-LEA COUNTY, NM		

**Sample ID: S - 2 (3') (H256661-09)**

BTEX 8021B		mg/kg		Analyzed By: JH					
Analyte	Result	Reporting Limit	Analyzed	Method Blank	BS	% Recovery	True Value QC	RPD	Qualifier
Benzene*	<0.050	0.050	10/23/2025	ND	2.27	113	2.00	1.77	
Toluene*	<0.050	0.050	10/23/2025	ND	2.20	110	2.00	5.18	
Ethylbenzene*	<0.050	0.050	10/23/2025	ND	2.38	119	2.00	9.69	
Total Xylenes*	<0.150	0.150	10/23/2025	ND	7.44	124	6.00	10.8	
Total BTEX	<0.300	0.300	10/23/2025	ND					

Surrogate: 4-Bromofluorobenzene (PID) 115 % 70.4-141

Chloride, SM4500CI-B		mg/kg		Analyzed By: HM					
Analyte	Result	Reporting Limit	Analyzed	Method Blank	BS	% Recovery	True Value QC	RPD	Qualifier
<b>Chloride</b>	<b>48.0</b>	16.0	10/23/2025	ND	416	104	400	3.77	

TPH 8015M		mg/kg		Analyzed By: MS					
Analyte	Result	Reporting Limit	Analyzed	Method Blank	BS	% Recovery	True Value QC	RPD	Qualifier
GRO C6-C10*	<10.0	10.0	10/24/2025	ND	204	102	200	0.179	
<b>DRO &gt;C10-C28*</b>	<b>23.2</b>	10.0	10/24/2025	ND	212	106	200	1.97	
EXT DRO >C28-C36	<10.0	10.0	10/24/2025	ND					

Surrogate: 1-Chlorooctane 89.5 % 52.4-130

Surrogate: 1-Chlorooctadecane 85.7 % 39.9-141

Cardinal Laboratories

\*=Accredited Analyte

PLEASE NOTE: Liability and Damages. Cardinal's liability and client's exclusive remedy for any claim arising, whether based in contract or tort, shall be limited to the amount paid by client for analyses. All claims, including those for negligence and any other cause whatsoever shall be deemed waived unless made in writing and received by Cardinal within thirty (30) days after completion of the applicable service. In no event shall Cardinal be liable for incidental or consequential damages, including, without limitation, business interruptions, loss of use, or loss of profits incurred by client, its subsidiaries, affiliates or successors arising out of or related to the performance of the services hereunder by Cardinal, regardless of whether such claim is based upon any of the above stated reasons or otherwise. Results relate only to the samples identified above. This report shall not be reproduced except in full with written approval of Cardinal Laboratories.

Celey D. Keene, Lab Director/Quality Manager



PHONE (575) 393-2326 ° 101 E. MARLAND ° HOBBS, NM 88240

**Analytical Results For:**

CARMONA RESOURCES  
 CONNER MOEHRING  
 310 W WALL ST, SUITE 500  
 MIDLAND TX, 79701  
 Fax To:

Received:	10/22/2025	Sampling Date:	10/20/2025
Reported:	10/27/2025	Sampling Type:	Soil
Project Name:	DRIVER 14 STATE #502	Sampling Condition:	Cool & Intact
Project Number:	3039	Sample Received By:	Tamara Oldaker
Project Location:	EOG-LEA COUNTY, NM		

**Sample ID: S - 2 (4') (H256661-10)**

BTEX 8021B		mg/kg		Analyzed By: JH					
Analyte	Result	Reporting Limit	Analyzed	Method Blank	BS	% Recovery	True Value QC	RPD	Qualifier
Benzene*	<0.050	0.050	10/23/2025	ND	2.27	113	2.00	1.77	
Toluene*	<0.050	0.050	10/23/2025	ND	2.20	110	2.00	5.18	
Ethylbenzene*	<0.050	0.050	10/23/2025	ND	2.38	119	2.00	9.69	
Total Xylenes*	<0.150	0.150	10/23/2025	ND	7.44	124	6.00	10.8	
Total BTEX	<0.300	0.300	10/23/2025	ND					

Surrogate: 4-Bromofluorobenzene (PID) 112 % 70.4-141

Chloride, SM4500CI-B		mg/kg		Analyzed By: HM					
Analyte	Result	Reporting Limit	Analyzed	Method Blank	BS	% Recovery	True Value QC	RPD	Qualifier
Chloride	<16.0	16.0	10/23/2025	ND	416	104	400	3.77	

TPH 8015M		mg/kg		Analyzed By: MS					
Analyte	Result	Reporting Limit	Analyzed	Method Blank	BS	% Recovery	True Value QC	RPD	Qualifier
GRO C6-C10*	<10.0	10.0	10/24/2025	ND	204	102	200	0.179	
DRO >C10-C28*	<10.0	10.0	10/24/2025	ND	212	106	200	1.97	
EXT DRO >C28-C36	<10.0	10.0	10/24/2025	ND					

Surrogate: 1-Chlorooctane 83.2 % 52.4-130

Surrogate: 1-Chlorooctadecane 79.3 % 39.9-141

Cardinal Laboratories

\*=Accredited Analyte

PLEASE NOTE: Liability and Damages. Cardinal's liability and client's exclusive remedy for any claim arising, whether based in contract or tort, shall be limited to the amount paid by client for analyses. All claims, including those for negligence and any other cause whatsoever shall be deemed waived unless made in writing and received by Cardinal within thirty (30) days after completion of the applicable service. In no event shall Cardinal be liable for incidental or consequential damages, including, without limitation, business interruptions, loss of use, or loss of profits incurred by client, its subsidiaries, affiliates or successors arising out of or related to the performance of the services hereunder by Cardinal, regardless of whether such claim is based upon any of the above stated reasons or otherwise. Results relate only to the samples identified above. This report shall not be reproduced except in full with written approval of Cardinal Laboratories.

Celey D. Keene, Lab Director/Quality Manager



PHONE (575) 393-2326 ° 101 E. MARLAND ° HOBBS, NM 88240

**Analytical Results For:**

CARMONA RESOURCES  
 CONNER MOEHRING  
 310 W WALL ST, SUITE 500  
 MIDLAND TX, 79701  
 Fax To:

Received:	10/22/2025	Sampling Date:	10/20/2025
Reported:	10/27/2025	Sampling Type:	Soil
Project Name:	DRIVER 14 STATE #502	Sampling Condition:	Cool & Intact
Project Number:	3039	Sample Received By:	Tamara Oldaker
Project Location:	EOG-LEA COUNTY, NM		

**Sample ID: H - 1 (0-0.5') (H256661-11)**

BTEX 8021B		mg/kg		Analyzed By: JH					
Analyte	Result	Reporting Limit	Analyzed	Method Blank	BS	% Recovery	True Value QC	RPD	Qualifier
Benzene*	<0.050	0.050	10/23/2025	ND	2.27	113	2.00	1.77	
Toluene*	<0.050	0.050	10/23/2025	ND	2.20	110	2.00	5.18	
Ethylbenzene*	<0.050	0.050	10/23/2025	ND	2.38	119	2.00	9.69	
Total Xylenes*	<0.150	0.150	10/23/2025	ND	7.44	124	6.00	10.8	
Total BTEX	<0.300	0.300	10/23/2025	ND					

Surrogate: 4-Bromofluorobenzene (PID) 117 % 70.4-141

Chloride, SM4500Cl-B		mg/kg		Analyzed By: HM					
Analyte	Result	Reporting Limit	Analyzed	Method Blank	BS	% Recovery	True Value QC	RPD	Qualifier
Chloride	32.0	16.0	10/23/2025	ND	416	104	400	3.77	

TPH 8015M		mg/kg		Analyzed By: MS					
Analyte	Result	Reporting Limit	Analyzed	Method Blank	BS	% Recovery	True Value QC	RPD	Qualifier
GRO C6-C10*	<10.0	10.0	10/24/2025	ND	204	102	200	0.179	
DRO >C10-C28*	<10.0	10.0	10/24/2025	ND	212	106	200	1.97	
EXT DRO >C28-C36	<10.0	10.0	10/24/2025	ND					

Surrogate: 1-Chlorooctane 79.3 % 52.4-130

Surrogate: 1-Chlorooctadecane 75.8 % 39.9-141

Cardinal Laboratories

\*=Accredited Analyte

PLEASE NOTE: Liability and Damages. Cardinal's liability and client's exclusive remedy for any claim arising, whether based in contract or tort, shall be limited to the amount paid by client for analyses. All claims, including those for negligence and any other cause whatsoever shall be deemed waived unless made in writing and received by Cardinal within thirty (30) days after completion of the applicable service. In no event shall Cardinal be liable for incidental or consequential damages, including, without limitation, business interruptions, loss of use, or loss of profits incurred by client, its subsidiaries, affiliates or successors arising out of or related to the performance of the services hereunder by Cardinal, regardless of whether such claim is based upon any of the above stated reasons or otherwise. Results relate only to the samples identified above. This report shall not be reproduced except in full with written approval of Cardinal Laboratories.

Celey D. Keene, Lab Director/Quality Manager



PHONE (575) 393-2326 ° 101 E. MARLAND ° HOBBS, NM 88240

**Analytical Results For:**

CARMONA RESOURCES  
 CONNER MOEHRING  
 310 W WALL ST, SUITE 500  
 MIDLAND TX, 79701  
 Fax To:

Received:	10/22/2025	Sampling Date:	10/20/2025
Reported:	10/27/2025	Sampling Type:	Soil
Project Name:	DRIVER 14 STATE #502	Sampling Condition:	Cool & Intact
Project Number:	3039	Sample Received By:	Tamara Oldaker
Project Location:	EOG-LEA COUNTY, NM		

**Sample ID: H - 2 (0-0.5') (H256661-12)**

BTEX 8021B		mg/kg		Analyzed By: JH					
Analyte	Result	Reporting Limit	Analyzed	Method Blank	BS	% Recovery	True Value QC	RPD	Qualifier
Benzene*	<0.050	0.050	10/23/2025	ND	2.27	113	2.00	1.77	
Toluene*	<0.050	0.050	10/23/2025	ND	2.20	110	2.00	5.18	
Ethylbenzene*	<0.050	0.050	10/23/2025	ND	2.38	119	2.00	9.69	
Total Xylenes*	<0.150	0.150	10/23/2025	ND	7.44	124	6.00	10.8	
Total BTEX	<0.300	0.300	10/23/2025	ND					

Surrogate: 4-Bromofluorobenzene (PID) 118 % 70.4-141

Chloride, SM4500Cl-B		mg/kg		Analyzed By: HM					
Analyte	Result	Reporting Limit	Analyzed	Method Blank	BS	% Recovery	True Value QC	RPD	Qualifier
Chloride	64.0	16.0	10/23/2025	ND	416	104	400	3.77	

TPH 8015M		mg/kg		Analyzed By: MS					
Analyte	Result	Reporting Limit	Analyzed	Method Blank	BS	% Recovery	True Value QC	RPD	Qualifier
GRO C6-C10*	<10.0	10.0	10/24/2025	ND	204	102	200	0.179	
DRO >C10-C28*	<10.0	10.0	10/24/2025	ND	212	106	200	1.97	
EXT DRO >C28-C36	<10.0	10.0	10/24/2025	ND					

Surrogate: 1-Chlorooctane 78.4 % 52.4-130

Surrogate: 1-Chlorooctadecane 75.4 % 39.9-141

Cardinal Laboratories

\*=Accredited Analyte

PLEASE NOTE: Liability and Damages. Cardinal's liability and client's exclusive remedy for any claim arising, whether based in contract or tort, shall be limited to the amount paid by client for analyses. All claims, including those for negligence and any other cause whatsoever shall be deemed waived unless made in writing and received by Cardinal within thirty (30) days after completion of the applicable service. In no event shall Cardinal be liable for incidental or consequential damages, including, without limitation, business interruptions, loss of use, or loss of profits incurred by client, its subsidiaries, affiliates or successors arising out of or related to the performance of the services hereunder by Cardinal, regardless of whether such claim is based upon any of the above stated reasons or otherwise. Results relate only to the samples identified above. This report shall not be reproduced except in full with written approval of Cardinal Laboratories.

Celey D. Keene, Lab Director/Quality Manager



PHONE (575) 393-2326 ° 101 E. MARLAND ° HOBBS, NM 88240

**Analytical Results For:**

CARMONA RESOURCES  
 CONNER MOEHRING  
 310 W WALL ST, SUITE 500  
 MIDLAND TX, 79701  
 Fax To:

Received:	10/22/2025	Sampling Date:	10/20/2025
Reported:	10/27/2025	Sampling Type:	Soil
Project Name:	DRIVER 14 STATE #502	Sampling Condition:	Cool & Intact
Project Number:	3039	Sample Received By:	Tamara Oldaker
Project Location:	EOG-LEA COUNTY, NM		

**Sample ID: H - 3 (0-0.5') (H256661-13)**

BTEX 8021B		mg/kg		Analyzed By: JH					
Analyte	Result	Reporting Limit	Analyzed	Method Blank	BS	% Recovery	True Value QC	RPD	Qualifier
Benzene*	<0.050	0.050	10/23/2025	ND	2.27	113	2.00	1.77	
Toluene*	<0.050	0.050	10/23/2025	ND	2.20	110	2.00	5.18	
Ethylbenzene*	<0.050	0.050	10/23/2025	ND	2.38	119	2.00	9.69	
Total Xylenes*	<0.150	0.150	10/23/2025	ND	7.44	124	6.00	10.8	
Total BTEX	<0.300	0.300	10/23/2025	ND					

Surrogate: 4-Bromofluorobenzene (PID) 116 % 70.4-141

Chloride, SM4500Cl-B		mg/kg		Analyzed By: HM					
Analyte	Result	Reporting Limit	Analyzed	Method Blank	BS	% Recovery	True Value QC	RPD	Qualifier
<b>Chloride</b>	<b>48.0</b>	16.0	10/23/2025	ND	416	104	400	3.77	

TPH 8015M		mg/kg		Analyzed By: MS					
Analyte	Result	Reporting Limit	Analyzed	Method Blank	BS	% Recovery	True Value QC	RPD	Qualifier
GRO C6-C10*	<10.0	10.0	10/24/2025	ND	204	102	200	0.179	
<b>DRO &gt;C10-C28*</b>	<b>11.7</b>	10.0	10/24/2025	ND	212	106	200	1.97	
EXT DRO >C28-C36	<10.0	10.0	10/24/2025	ND					

Surrogate: 1-Chlorooctane 81.9 % 52.4-130

Surrogate: 1-Chlorooctadecane 77.0 % 39.9-141

Cardinal Laboratories

\*=Accredited Analyte

PLEASE NOTE: Liability and Damages. Cardinal's liability and client's exclusive remedy for any claim arising, whether based in contract or tort, shall be limited to the amount paid by client for analyses. All claims, including those for negligence and any other cause whatsoever shall be deemed waived unless made in writing and received by Cardinal within thirty (30) days after completion of the applicable service. In no event shall Cardinal be liable for incidental or consequential damages, including, without limitation, business interruptions, loss of use, or loss of profits incurred by client, its subsidiaries, affiliates or successors arising out of or related to the performance of the services hereunder by Cardinal, regardless of whether such claim is based upon any of the above stated reasons or otherwise. Results relate only to the samples identified above. This report shall not be reproduced except in full with written approval of Cardinal Laboratories.

Celey D. Keene, Lab Director/Quality Manager



PHONE (575) 393-2326 ° 101 E. MARLAND ° HOBBS, NM 88240

**Analytical Results For:**

CARMONA RESOURCES  
 CONNER MOEHRING  
 310 W WALL ST, SUITE 500  
 MIDLAND TX, 79701  
 Fax To:

Received:	10/22/2025	Sampling Date:	10/20/2025
Reported:	10/27/2025	Sampling Type:	Soil
Project Name:	DRIVER 14 STATE #502	Sampling Condition:	Cool & Intact
Project Number:	3039	Sample Received By:	Tamara Oldaker
Project Location:	EOG-LEA COUNTY, NM		

**Sample ID: H - 4 (0-0.5') (H256661-14)**

BTEX 8021B		mg/kg		Analyzed By: JH					
Analyte	Result	Reporting Limit	Analyzed	Method Blank	BS	% Recovery	True Value QC	RPD	Qualifier
Benzene*	<0.050	0.050	10/23/2025	ND	2.27	113	2.00	1.77	
Toluene*	<0.050	0.050	10/23/2025	ND	2.20	110	2.00	5.18	
Ethylbenzene*	<0.050	0.050	10/23/2025	ND	2.38	119	2.00	9.69	
Total Xylenes*	<0.150	0.150	10/23/2025	ND	7.44	124	6.00	10.8	
Total BTEX	<0.300	0.300	10/23/2025	ND					

Surrogate: 4-Bromofluorobenzene (PID) 112 % 70.4-141

Chloride, SM4500Cl-B		mg/kg		Analyzed By: HM					
Analyte	Result	Reporting Limit	Analyzed	Method Blank	BS	% Recovery	True Value QC	RPD	Qualifier
Chloride	64.0	16.0	10/23/2025	ND	416	104	400	3.77	

TPH 8015M		mg/kg		Analyzed By: MS					
Analyte	Result	Reporting Limit	Analyzed	Method Blank	BS	% Recovery	True Value QC	RPD	Qualifier
GRO C6-C10*	<10.0	10.0	10/24/2025	ND	204	102	200	0.179	
DRO >C10-C28*	<10.0	10.0	10/24/2025	ND	212	106	200	1.97	
EXT DRO >C28-C36	<10.0	10.0	10/24/2025	ND					

Surrogate: 1-Chlorooctane 71.2 % 52.4-130

Surrogate: 1-Chlorooctadecane 66.2 % 39.9-141

Cardinal Laboratories

\*=Accredited Analyte

PLEASE NOTE: Liability and Damages. Cardinal's liability and client's exclusive remedy for any claim arising, whether based in contract or tort, shall be limited to the amount paid by client for analyses. All claims, including those for negligence and any other cause whatsoever shall be deemed waived unless made in writing and received by Cardinal within thirty (30) days after completion of the applicable service. In no event shall Cardinal be liable for incidental or consequential damages, including, without limitation, business interruptions, loss of use, or loss of profits incurred by client, its subsidiaries, affiliates or successors arising out of or related to the performance of the services hereunder by Cardinal, regardless of whether such claim is based upon any of the above stated reasons or otherwise. Results relate only to the samples identified above. This report shall not be reproduced except in full with written approval of Cardinal Laboratories.

Celey D. Keene, Lab Director/Quality Manager



PHONE (575) 393-2326 ° 101 E. MARLAND ° HOBBS, NM 88240

Notes and Definitions

- S-04 The surrogate recovery for this sample is outside of established control limits due to a sample matrix effect.
QM-07 The spike recovery was outside acceptance limits for the MS and/or MSD. The batch was accepted based on acceptable LCS recovery.
BS-3 Blank spike recovery outside of lab established statistical limits, but still within method limits. Data is not adversely affected.
ND Analyte NOT DETECTED at or above the reporting limit
RPD Relative Percent Difference
\*\* Samples not received at proper temperature of 6°C or below.
\*\*\* Insufficient time to reach temperature.
- Chloride by SM4500Cl-B does not require samples be received at or below 6°C
Samples reported on an as received basis (wet) unless otherwise noted on report

Cardinal Laboratories

\*=Accredited Analyte

PLEASE NOTE: Liability and Damages. Cardinal's liability and client's exclusive remedy for any claim arising, whether based in contract or tort, shall be limited to the amount paid by client for analyses. All claims, including those for negligence and any other cause whatsoever shall be deemed waived unless made in writing and received by Cardinal within thirty (30) days after completion of the applicable service.

Celey D. Keene

Celey D. Keene, Lab Director/Quality Manager

Chain of Custody

Work Order No: AST04101

Page 1 of 3

Project Manager:	Conner Moehring	Bill to: (if different)	Todd Wells
Company Name:	Carmona Resources	Company Name:	EOG Resources
Address:	310 W Wall St Ste 500	Address:	5509 Champions Dr
City, State ZIP:	Midland, TX 79701	City, State ZIP:	Midland, TX 79706
Phone:	432-813-6823	Email:	Todd Wells@eogresources.com

Program: UST/PST	<input type="checkbox"/> PRP	<input type="checkbox"/> Brownfields	<input type="checkbox"/> RRC	<input type="checkbox"/> perfund
State of Project:				
Reporting Level II	<input type="checkbox"/> Level III	<input type="checkbox"/> ST/UST	<input type="checkbox"/> RRP	<input type="checkbox"/> Level IV
Deliverables: EDD	<input type="checkbox"/> ADAPT	<input type="checkbox"/> Other:		

Project Name:	Driver 14 State #502	Turn Around	<input type="checkbox"/> Routine	<input checked="" type="checkbox"/> Rush	Pres. Code	
Project Number:	3039	Due Date:	72 HR TAT			
Project Location:	Lea County, NM					
Sampler's Name:	JR					
PO #:						
<b>SAMPLE RECEIPT</b>	Temp Blank:	Yes	No	Wet Ice:	Yes	No
Received In tact:	Yes	No	Thermometer ID:	#140		
Cooler Custody Seals:	Yes	No	Correction Factor:	1.038		
Sample Custody Seals:	Yes	No	Temperature Reading:	1.8°C		
Total Containers:			Corrected Temperature:	8.1°C		

Sample Identification	Date	Time	Soil	Water	Grab/Comp	# of Cont	Parameters	ANALYSIS REQUEST	Preservative Codes	Sample Comments
S-1 (0-1')	10/20/2025		X		Grab	1	BTEX 8021B		None: NO	
S-1 (1.5')	10/20/2025		X		Grab	1	TPH 8015M (GRO + DRO + MRO)		Cool: Cool	DI Water: H <sub>2</sub> O
S-1 (2')	10/20/2025		X		Grab	1	Chloride 4500		HCL: HC	MeOH: Me
S-1 (3')	10/20/2025		X		Grab	1			H <sub>2</sub> SO <sub>4</sub> : H <sub>2</sub>	HNO <sub>3</sub> : HN
S-1 (4')	10/20/2025		X		Grab	1			H <sub>3</sub> PO <sub>4</sub> : HP	NaOH: Na
S-2 (0-1')	10/20/2025		X		Grab	1			NaHSO <sub>4</sub> : NABIS	
S-2 (1.5')	10/20/2025		X		Grab	1			Na <sub>2</sub> S <sub>2</sub> O <sub>3</sub> : NaSO <sub>3</sub>	
S-2 (2')	10/20/2025		X		Grab	1			Zn Acetate+NaOH: Zn	
S-2 (3')	10/20/2025		X		Grab	1			NaOH+Ascorbic Acid: SAPC	
S-2 (4')	10/20/2025		X		Grab	1				

Comments: Email to Mike Carmona / mcarmona@carmonaresources.com and Conner Moehring / cmoehring@carmonaresources.com

*NO Labels - Not our containers*

Relinquished by: (Signature)

Date/Time

Received by: (Signature)

Date/Time

*Carle TP*

*10-22-25 1510*

*[Signature]*





PHONE (575) 393-2326 ° 101 E. MARLAND ° HOBBS, NM 88240

---

December 17, 2025

CONNER MOEHRING  
CARMONA RESOURCES  
310 W WALL ST, SUITE 500  
MIDLAND, TX 79701

RE: DRIVER 14 STATE #502

Enclosed are the results of analyses for samples received by the laboratory on 12/16/25 14:50.

Cardinal Laboratories is accredited through Texas NELAP under certificate number TX-C25-00101. Accreditation applies to drinking water, non-potable water and solid and chemical materials. All accredited analytes are denoted by an asterisk (\*). For a complete list of accredited analytes and matrices visit the TCEQ website at [www.tceq.texas.gov/field/qa/lab\\_accred\\_certif.html](http://www.tceq.texas.gov/field/qa/lab_accred_certif.html).

Cardinal Laboratories is accredited through the State of Colorado Department of Public Health and Environment for:

Method EPA 552.2	Haloacetic Acids (HAA-5)
Method EPA 524.2	Total Trihalomethanes (TTHM)
Method EPA 524.4	Regulated VOCs (V1, V2, V3)

Accreditation applies to public drinking water matrices.

This report meets NELAP requirements and is made up of a cover page, analytical results, and a copy of the original chain-of-custody. If you have any questions concerning this report, please feel free to contact me.

Sincerely,

A handwritten signature in black ink that reads "Celey D. Keene".

Celey D. Keene  
Lab Director/Quality Manager



PHONE (575) 393-2326 ° 101 E. MARLAND ° HOBBS, NM 88240

**Analytical Results For:**

CARMONA RESOURCES  
 CONNER MOEHRING  
 310 W WALL ST, SUITE 500  
 MIDLAND TX, 79701  
 Fax To:

Received:	12/16/2025	Sampling Date:	12/15/2025
Reported:	12/17/2025	Sampling Type:	Soil
Project Name:	DRIVER 14 STATE #502	Sampling Condition:	Cool & Intact
Project Number:	3039	Sample Received By:	Shalyn Rodriguez
Project Location:	EOG-LEA COUNTY, NM		

**Sample ID: CS - 1 (3') (H257777-01)**

BTEX 8021B		mg/kg		Analyzed By: JH					
Analyte	Result	Reporting Limit	Analyzed	Method Blank	BS	% Recovery	True Value QC	RPD	Qualifier
Benzene*	<0.050	0.050	12/16/2025	ND	1.81	90.3	2.00	2.04	
Toluene*	<0.050	0.050	12/16/2025	ND	1.93	96.3	2.00	0.569	
Ethylbenzene*	<0.050	0.050	12/16/2025	ND	1.91	95.3	2.00	0.745	
Total Xylenes*	<0.150	0.150	12/16/2025	ND	5.76	96.1	6.00	0.457	
Total BTEX	<0.300	0.300	12/16/2025	ND					

Surrogate: 4-Bromofluorobenzene (PID) 109 % 70.4-141

Chloride, SM4500Cl-B		mg/kg		Analyzed By: HM					
Analyte	Result	Reporting Limit	Analyzed	Method Blank	BS	% Recovery	True Value QC	RPD	Qualifier
Chloride	32.0	16.0	12/17/2025	ND	432	108	400	3.77	

TPH 8015M		mg/kg		Analyzed By: MS					
Analyte	Result	Reporting Limit	Analyzed	Method Blank	BS	% Recovery	True Value QC	RPD	Qualifier
GRO C6-C10*	<10.0	10.0	12/16/2025	ND	206	103	200	2.11	
DRO >C10-C28*	<10.0	10.0	12/16/2025	ND	232	116	200	2.21	
EXT DRO >C28-C36	<10.0	10.0	12/16/2025	ND					

Surrogate: 1-Chlorooctane 103 % 52.4-130

Surrogate: 1-Chlorooctadecane 102 % 39.9-141

Cardinal Laboratories

\*=Accredited Analyte

PLEASE NOTE: Liability and Damages. Cardinal's liability and client's exclusive remedy for any claim arising, whether based in contract or tort, shall be limited to the amount paid by client for analyses. All claims, including those for negligence and any other cause whatsoever shall be deemed waived unless made in writing and received by Cardinal within thirty (30) days after completion of the applicable service. In no event shall Cardinal be liable for incidental or consequential damages, including, without limitation, business interruptions, loss of use, or loss of profits incurred by client, its subsidiaries, affiliates or successors arising out of or related to the performance of the services hereunder by Cardinal, regardless of whether such claim is based upon any of the above stated reasons or otherwise. Results relate only to the samples identified above. This report shall not be reproduced except in full with written approval of Cardinal Laboratories.

Celey D. Keene, Lab Director/Quality Manager



PHONE (575) 393-2326 ° 101 E. MARLAND ° HOBBS, NM 88240

**Analytical Results For:**

CARMONA RESOURCES  
 CONNER MOEHRING  
 310 W WALL ST, SUITE 500  
 MIDLAND TX, 79701  
 Fax To:

Received:	12/16/2025	Sampling Date:	12/15/2025
Reported:	12/17/2025	Sampling Type:	Soil
Project Name:	DRIVER 14 STATE #502	Sampling Condition:	Cool & Intact
Project Number:	3039	Sample Received By:	Shalyn Rodriguez
Project Location:	EOG-LEA COUNTY, NM		

**Sample ID: CS - 2 (3') (H257777-02)**

BTEX 8021B		mg/kg		Analyzed By: JH					
Analyte	Result	Reporting Limit	Analyzed	Method Blank	BS	% Recovery	True Value QC	RPD	Qualifier
Benzene*	<0.050	0.050	12/16/2025	ND	1.81	90.3	2.00	2.04	
Toluene*	<0.050	0.050	12/16/2025	ND	1.93	96.3	2.00	0.569	
Ethylbenzene*	<0.050	0.050	12/16/2025	ND	1.91	95.3	2.00	0.745	
Total Xylenes*	<0.150	0.150	12/16/2025	ND	5.76	96.1	6.00	0.457	
Total BTEX	<0.300	0.300	12/16/2025	ND					

Surrogate: 4-Bromofluorobenzene (PID) 112 % 70.4-141

Chloride, SM4500CI-B		mg/kg		Analyzed By: HM					
Analyte	Result	Reporting Limit	Analyzed	Method Blank	BS	% Recovery	True Value QC	RPD	Qualifier
Chloride	32.0	16.0	12/17/2025	ND	432	108	400	3.77	

TPH 8015M		mg/kg		Analyzed By: MS					
Analyte	Result	Reporting Limit	Analyzed	Method Blank	BS	% Recovery	True Value QC	RPD	Qualifier
GRO C6-C10*	<10.0	10.0	12/17/2025	ND	206	103	200	2.11	
DRO >C10-C28*	<10.0	10.0	12/17/2025	ND	232	116	200	2.21	
EXT DRO >C28-C36	<10.0	10.0	12/17/2025	ND					

Surrogate: 1-Chlorooctane 107 % 52.4-130

Surrogate: 1-Chlorooctadecane 106 % 39.9-141

Cardinal Laboratories

\*=Accredited Analyte

PLEASE NOTE: Liability and Damages. Cardinal's liability and client's exclusive remedy for any claim arising, whether based in contract or tort, shall be limited to the amount paid by client for analyses. All claims, including those for negligence and any other cause whatsoever shall be deemed waived unless made in writing and received by Cardinal within thirty (30) days after completion of the applicable service. In no event shall Cardinal be liable for incidental or consequential damages, including, without limitation, business interruptions, loss of use, or loss of profits incurred by client, its subsidiaries, affiliates or successors arising out of or related to the performance of the services hereunder by Cardinal, regardless of whether such claim is based upon any of the above stated reasons or otherwise. Results relate only to the samples identified above. This report shall not be reproduced except in full with written approval of Cardinal Laboratories.

Celey D. Keene, Lab Director/Quality Manager



PHONE (575) 393-2326 ° 101 E. MARLAND ° HOBBS, NM 88240

**Analytical Results For:**

CARMONA RESOURCES  
 CONNER MOEHRING  
 310 W WALL ST, SUITE 500  
 MIDLAND TX, 79701  
 Fax To:

Received:	12/16/2025	Sampling Date:	12/15/2025
Reported:	12/17/2025	Sampling Type:	Soil
Project Name:	DRIVER 14 STATE #502	Sampling Condition:	Cool & Intact
Project Number:	3039	Sample Received By:	Shalyn Rodriguez
Project Location:	EOG-LEA COUNTY, NM		

**Sample ID: CS - 3 (3') (H257777-03)**

BTEX 8021B		mg/kg		Analyzed By: JH					
Analyte	Result	Reporting Limit	Analyzed	Method Blank	BS	% Recovery	True Value QC	RPD	Qualifier
Benzene*	<0.050	0.050	12/16/2025	ND	1.81	90.3	2.00	2.04	
Toluene*	<0.050	0.050	12/16/2025	ND	1.93	96.3	2.00	0.569	
Ethylbenzene*	<0.050	0.050	12/16/2025	ND	1.91	95.3	2.00	0.745	
Total Xylenes*	<0.150	0.150	12/16/2025	ND	5.76	96.1	6.00	0.457	
Total BTEX	<0.300	0.300	12/16/2025	ND					

Surrogate: 4-Bromofluorobenzene (PID) 112 % 70.4-141

Chloride, SM4500CI-B		mg/kg		Analyzed By: HM					
Analyte	Result	Reporting Limit	Analyzed	Method Blank	BS	% Recovery	True Value QC	RPD	Qualifier
Chloride	32.0	16.0	12/17/2025	ND	432	108	400	3.77	

TPH 8015M		mg/kg		Analyzed By: MS					
Analyte	Result	Reporting Limit	Analyzed	Method Blank	BS	% Recovery	True Value QC	RPD	Qualifier
GRO C6-C10*	<10.0	10.0	12/17/2025	ND	206	103	200	2.11	
DRO >C10-C28*	<10.0	10.0	12/17/2025	ND	232	116	200	2.21	
EXT DRO >C28-C36	<10.0	10.0	12/17/2025	ND					

Surrogate: 1-Chlorooctane 98.0 % 52.4-130

Surrogate: 1-Chlorooctadecane 93.9 % 39.9-141

Cardinal Laboratories

\*=Accredited Analyte

PLEASE NOTE: Liability and Damages. Cardinal's liability and client's exclusive remedy for any claim arising, whether based in contract or tort, shall be limited to the amount paid by client for analyses. All claims, including those for negligence and any other cause whatsoever shall be deemed waived unless made in writing and received by Cardinal within thirty (30) days after completion of the applicable service. In no event shall Cardinal be liable for incidental or consequential damages, including, without limitation, business interruptions, loss of use, or loss of profits incurred by client, its subsidiaries, affiliates or successors arising out of or related to the performance of the services hereunder by Cardinal, regardless of whether such claim is based upon any of the above stated reasons or otherwise. Results relate only to the samples identified above. This report shall not be reproduced except in full with written approval of Cardinal Laboratories.

Celey D. Keene, Lab Director/Quality Manager



PHONE (575) 393-2326 ° 101 E. MARLAND ° HOBBS, NM 88240

**Analytical Results For:**

CARMONA RESOURCES  
 CONNER MOEHRING  
 310 W WALL ST, SUITE 500  
 MIDLAND TX, 79701  
 Fax To:

Received:	12/16/2025	Sampling Date:	12/15/2025
Reported:	12/17/2025	Sampling Type:	Soil
Project Name:	DRIVER 14 STATE #502	Sampling Condition:	Cool & Intact
Project Number:	3039	Sample Received By:	Shalyn Rodriguez
Project Location:	EOG-LEA COUNTY, NM		

**Sample ID: SW - 1 (3') (H257777-04)**

BTEX 8021B		mg/kg		Analyzed By: JH					
Analyte	Result	Reporting Limit	Analyzed	Method Blank	BS	% Recovery	True Value QC	RPD	Qualifier
Benzene*	<0.050	0.050	12/16/2025	ND	1.81	90.3	2.00	2.04	
Toluene*	<0.050	0.050	12/16/2025	ND	1.93	96.3	2.00	0.569	
Ethylbenzene*	<0.050	0.050	12/16/2025	ND	1.91	95.3	2.00	0.745	
Total Xylenes*	<0.150	0.150	12/16/2025	ND	5.76	96.1	6.00	0.457	
Total BTEX	<0.300	0.300	12/16/2025	ND					

Surrogate: 4-Bromofluorobenzene (PID) 113 % 70.4-141

Chloride, SM4500CI-B		mg/kg		Analyzed By: HM					
Analyte	Result	Reporting Limit	Analyzed	Method Blank	BS	% Recovery	True Value QC	RPD	Qualifier
Chloride	48.0	16.0	12/17/2025	ND	432	108	400	3.77	

TPH 8015M		mg/kg		Analyzed By: MS					
Analyte	Result	Reporting Limit	Analyzed	Method Blank	BS	% Recovery	True Value QC	RPD	Qualifier
GRO C6-C10*	<10.0	10.0	12/17/2025	ND	206	103	200	2.11	
DRO >C10-C28*	<10.0	10.0	12/17/2025	ND	232	116	200	2.21	
EXT DRO >C28-C36	<10.0	10.0	12/17/2025	ND					

Surrogate: 1-Chlorooctane 103 % 52.4-130

Surrogate: 1-Chlorooctadecane 101 % 39.9-141

Cardinal Laboratories

\*=Accredited Analyte

PLEASE NOTE: Liability and Damages. Cardinal's liability and client's exclusive remedy for any claim arising, whether based in contract or tort, shall be limited to the amount paid by client for analyses. All claims, including those for negligence and any other cause whatsoever shall be deemed waived unless made in writing and received by Cardinal within thirty (30) days after completion of the applicable service. In no event shall Cardinal be liable for incidental or consequential damages, including, without limitation, business interruptions, loss of use, or loss of profits incurred by client, its subsidiaries, affiliates or successors arising out of or related to the performance of the services hereunder by Cardinal, regardless of whether such claim is based upon any of the above stated reasons or otherwise. Results relate only to the samples identified above. This report shall not be reproduced except in full with written approval of Cardinal Laboratories.

Celey D. Keene, Lab Director/Quality Manager



PHONE (575) 393-2326 ° 101 E. MARLAND ° HOBBS, NM 88240

**Analytical Results For:**

CARMONA RESOURCES  
 CONNER MOEHRING  
 310 W WALL ST, SUITE 500  
 MIDLAND TX, 79701  
 Fax To:

Received:	12/16/2025	Sampling Date:	12/15/2025
Reported:	12/17/2025	Sampling Type:	Soil
Project Name:	DRIVER 14 STATE #502	Sampling Condition:	Cool & Intact
Project Number:	3039	Sample Received By:	Shalyn Rodriguez
Project Location:	EOG-LEA COUNTY, NM		

**Sample ID: SW - 2 (3') (H257777-05)**

BTEX 8021B		mg/kg		Analyzed By: JH					
Analyte	Result	Reporting Limit	Analyzed	Method Blank	BS	% Recovery	True Value QC	RPD	Qualifier
Benzene*	<0.050	0.050	12/16/2025	ND	1.81	90.3	2.00	2.04	
Toluene*	<0.050	0.050	12/16/2025	ND	1.93	96.3	2.00	0.569	
Ethylbenzene*	<0.050	0.050	12/16/2025	ND	1.91	95.3	2.00	0.745	
Total Xylenes*	<0.150	0.150	12/16/2025	ND	5.76	96.1	6.00	0.457	
Total BTEX	<0.300	0.300	12/16/2025	ND					

Surrogate: 4-Bromofluorobenzene (PID) 110 % 70.4-141

Chloride, SM4500CI-B		mg/kg		Analyzed By: HM					
Analyte	Result	Reporting Limit	Analyzed	Method Blank	BS	% Recovery	True Value QC	RPD	Qualifier
Chloride	32.0	16.0	12/17/2025	ND	432	108	400	3.77	

TPH 8015M		mg/kg		Analyzed By: MS					
Analyte	Result	Reporting Limit	Analyzed	Method Blank	BS	% Recovery	True Value QC	RPD	Qualifier
GRO C6-C10*	<10.0	10.0	12/17/2025	ND	206	103	200	2.11	
DRO >C10-C28*	<10.0	10.0	12/17/2025	ND	232	116	200	2.21	
EXT DRO >C28-C36	<10.0	10.0	12/17/2025	ND					

Surrogate: 1-Chlorooctane 105 % 52.4-130

Surrogate: 1-Chlorooctadecane 101 % 39.9-141

Cardinal Laboratories

\*=Accredited Analyte

PLEASE NOTE: Liability and Damages. Cardinal's liability and client's exclusive remedy for any claim arising, whether based in contract or tort, shall be limited to the amount paid by client for analyses. All claims, including those for negligence and any other cause whatsoever shall be deemed waived unless made in writing and received by Cardinal within thirty (30) days after completion of the applicable service. In no event shall Cardinal be liable for incidental or consequential damages, including, without limitation, business interruptions, loss of use, or loss of profits incurred by client, its subsidiaries, affiliates or successors arising out of or related to the performance of the services hereunder by Cardinal, regardless of whether such claim is based upon any of the above stated reasons or otherwise. Results relate only to the samples identified above. This report shall not be reproduced except in full with written approval of Cardinal Laboratories.

Celey D. Keene, Lab Director/Quality Manager



PHONE (575) 393-2326 ° 101 E. MARLAND ° HOBBS, NM 88240

**Analytical Results For:**

CARMONA RESOURCES  
 CONNER MOEHRING  
 310 W WALL ST, SUITE 500  
 MIDLAND TX, 79701  
 Fax To:

Received:	12/16/2025	Sampling Date:	12/15/2025
Reported:	12/17/2025	Sampling Type:	Soil
Project Name:	DRIVER 14 STATE #502	Sampling Condition:	Cool & Intact
Project Number:	3039	Sample Received By:	Shalyn Rodriguez
Project Location:	EOG-LEA COUNTY, NM		

**Sample ID: SW - 3 (3') (H257777-06)**

BTEX 8021B		mg/kg		Analyzed By: JH					
Analyte	Result	Reporting Limit	Analyzed	Method Blank	BS	% Recovery	True Value QC	RPD	Qualifier
Benzene*	<0.050	0.050	12/16/2025	ND	1.81	90.3	2.00	2.04	
Toluene*	<0.050	0.050	12/16/2025	ND	1.93	96.3	2.00	0.569	
Ethylbenzene*	<0.050	0.050	12/16/2025	ND	1.91	95.3	2.00	0.745	
Total Xylenes*	<0.150	0.150	12/16/2025	ND	5.76	96.1	6.00	0.457	
Total BTEX	<0.300	0.300	12/16/2025	ND					

Surrogate: 4-Bromofluorobenzene (PID) 111 % 70.4-141

Chloride, SM4500CI-B		mg/kg		Analyzed By: HM					
Analyte	Result	Reporting Limit	Analyzed	Method Blank	BS	% Recovery	True Value QC	RPD	Qualifier
Chloride	32.0	16.0	12/17/2025	ND	432	108	400	3.77	

TPH 8015M		mg/kg		Analyzed By: MS					
Analyte	Result	Reporting Limit	Analyzed	Method Blank	BS	% Recovery	True Value QC	RPD	Qualifier
GRO C6-C10*	<10.0	10.0	12/17/2025	ND	206	103	200	2.11	
DRO >C10-C28*	<10.0	10.0	12/17/2025	ND	232	116	200	2.21	
EXT DRO >C28-C36	<10.0	10.0	12/17/2025	ND					

Surrogate: 1-Chlorooctane 108 % 52.4-130

Surrogate: 1-Chlorooctadecane 103 % 39.9-141

Cardinal Laboratories

\*=Accredited Analyte

PLEASE NOTE: Liability and Damages. Cardinal's liability and client's exclusive remedy for any claim arising, whether based in contract or tort, shall be limited to the amount paid by client for analyses. All claims, including those for negligence and any other cause whatsoever shall be deemed waived unless made in writing and received by Cardinal within thirty (30) days after completion of the applicable service. In no event shall Cardinal be liable for incidental or consequential damages, including, without limitation, business interruptions, loss of use, or loss of profits incurred by client, its subsidiaries, affiliates or successors arising out of or related to the performance of the services hereunder by Cardinal, regardless of whether such claim is based upon any of the above stated reasons or otherwise. Results relate only to the samples identified above. This report shall not be reproduced except in full with written approval of Cardinal Laboratories.

Celey D. Keene, Lab Director/Quality Manager



PHONE (575) 393-2326 ° 101 E. MARLAND ° HOBBS, NM 88240

**Analytical Results For:**

CARMONA RESOURCES  
 CONNER MOEHRING  
 310 W WALL ST, SUITE 500  
 MIDLAND TX, 79701  
 Fax To:

Received:	12/16/2025	Sampling Date:	12/15/2025
Reported:	12/17/2025	Sampling Type:	Soil
Project Name:	DRIVER 14 STATE #502	Sampling Condition:	Cool & Intact
Project Number:	3039	Sample Received By:	Shalyn Rodriguez
Project Location:	EOG-LEA COUNTY, NM		

**Sample ID: SW - 4 (3') (H257777-07)**

BTEX 8021B		mg/kg		Analyzed By: JH					
Analyte	Result	Reporting Limit	Analyzed	Method Blank	BS	% Recovery	True Value QC	RPD	Qualifier
Benzene*	<0.050	0.050	12/16/2025	ND	1.81	90.3	2.00	2.04	
Toluene*	<0.050	0.050	12/16/2025	ND	1.93	96.3	2.00	0.569	
Ethylbenzene*	<0.050	0.050	12/16/2025	ND	1.91	95.3	2.00	0.745	
Total Xylenes*	<0.150	0.150	12/16/2025	ND	5.76	96.1	6.00	0.457	
Total BTEX	<0.300	0.300	12/16/2025	ND					

Surrogate: 4-Bromofluorobenzene (PID) 111 % 70.4-141

Chloride, SM4500CI-B		mg/kg		Analyzed By: KH					
Analyte	Result	Reporting Limit	Analyzed	Method Blank	BS	% Recovery	True Value QC	RPD	Qualifier
Chloride	32.0	16.0	12/17/2025	ND	416	104	400	0.00	

TPH 8015M		mg/kg		Analyzed By: MS					
Analyte	Result	Reporting Limit	Analyzed	Method Blank	BS	% Recovery	True Value QC	RPD	Qualifier
GRO C6-C10*	<10.0	10.0	12/17/2025	ND	206	103	200	2.11	
DRO >C10-C28*	<10.0	10.0	12/17/2025	ND	232	116	200	2.21	
EXT DRO >C28-C36	<10.0	10.0	12/17/2025	ND					

Surrogate: 1-Chlorooctane 114 % 52.4-130

Surrogate: 1-Chlorooctadecane 110 % 39.9-141

Cardinal Laboratories

\*=Accredited Analyte

PLEASE NOTE: Liability and Damages. Cardinal's liability and client's exclusive remedy for any claim arising, whether based in contract or tort, shall be limited to the amount paid by client for analyses. All claims, including those for negligence and any other cause whatsoever shall be deemed waived unless made in writing and received by Cardinal within thirty (30) days after completion of the applicable service. In no event shall Cardinal be liable for incidental or consequential damages, including, without limitation, business interruptions, loss of use, or loss of profits incurred by client, its subsidiaries, affiliates or successors arising out of or related to the performance of the services hereunder by Cardinal, regardless of whether such claim is based upon any of the above stated reasons or otherwise. Results relate only to the samples identified above. This report shall not be reproduced except in full with written approval of Cardinal Laboratories.

Celey D. Keene, Lab Director/Quality Manager



PHONE (575) 393-2326 ° 101 E. MARLAND ° HOBBS, NM 88240

**Analytical Results For:**

CARMONA RESOURCES  
 CONNER MOEHRING  
 310 W WALL ST, SUITE 500  
 MIDLAND TX, 79701  
 Fax To:

Received:	12/16/2025	Sampling Date:	12/15/2025
Reported:	12/17/2025	Sampling Type:	Soil
Project Name:	DRIVER 14 STATE #502	Sampling Condition:	Cool & Intact
Project Number:	3039	Sample Received By:	Shalyn Rodriguez
Project Location:	EOG-LEA COUNTY, NM		

**Sample ID: SW - 5 (3') (H257777-08)**

BTEX 8021B		mg/kg		Analyzed By: JH					
Analyte	Result	Reporting Limit	Analyzed	Method Blank	BS	% Recovery	True Value QC	RPD	Qualifier
Benzene*	<0.050	0.050	12/16/2025	ND	1.81	90.3	2.00	2.04	
Toluene*	<0.050	0.050	12/16/2025	ND	1.93	96.3	2.00	0.569	
Ethylbenzene*	<0.050	0.050	12/16/2025	ND	1.91	95.3	2.00	0.745	
Total Xylenes*	<0.150	0.150	12/16/2025	ND	5.76	96.1	6.00	0.457	
Total BTEX	<0.300	0.300	12/16/2025	ND					

Surrogate: 4-Bromofluorobenzene (PID) 111 % 70.4-141

Chloride, SM4500CI-B		mg/kg		Analyzed By: KH					
Analyte	Result	Reporting Limit	Analyzed	Method Blank	BS	% Recovery	True Value QC	RPD	Qualifier
Chloride	32.0	16.0	12/17/2025	ND	416	104	400	0.00	

TPH 8015M		mg/kg		Analyzed By: MS					
Analyte	Result	Reporting Limit	Analyzed	Method Blank	BS	% Recovery	True Value QC	RPD	Qualifier
GRO C6-C10*	<10.0	10.0	12/17/2025	ND	206	103	200	2.11	
DRO >C10-C28*	<10.0	10.0	12/17/2025	ND	232	116	200	2.21	
EXT DRO >C28-C36	<10.0	10.0	12/17/2025	ND					

Surrogate: 1-Chlorooctane 113 % 52.4-130

Surrogate: 1-Chlorooctadecane 110 % 39.9-141

Cardinal Laboratories

\*=Accredited Analyte

PLEASE NOTE: Liability and Damages. Cardinal's liability and client's exclusive remedy for any claim arising, whether based in contract or tort, shall be limited to the amount paid by client for analyses. All claims, including those for negligence and any other cause whatsoever shall be deemed waived unless made in writing and received by Cardinal within thirty (30) days after completion of the applicable service. In no event shall Cardinal be liable for incidental or consequential damages, including, without limitation, business interruptions, loss of use, or loss of profits incurred by client, its subsidiaries, affiliates or successors arising out of or related to the performance of the services hereunder by Cardinal, regardless of whether such claim is based upon any of the above stated reasons or otherwise. Results relate only to the samples identified above. This report shall not be reproduced except in full with written approval of Cardinal Laboratories.

Celey D. Keene, Lab Director/Quality Manager



PHONE (575) 393-2326 ° 101 E. MARLAND ° HOBBS, NM 88240

**Analytical Results For:**

CARMONA RESOURCES  
 CONNER MOEHRING  
 310 W WALL ST, SUITE 500  
 MIDLAND TX, 79701  
 Fax To:

Received:	12/16/2025	Sampling Date:	12/15/2025
Reported:	12/17/2025	Sampling Type:	Soil
Project Name:	DRIVER 14 STATE #502	Sampling Condition:	Cool & Intact
Project Number:	3039	Sample Received By:	Shalyn Rodriguez
Project Location:	EOG-LEA COUNTY, NM		

**Sample ID: SW - 6 (3') (H257777-09)**

BTEX 8021B		mg/kg		Analyzed By: JH					
Analyte	Result	Reporting Limit	Analyzed	Method Blank	BS	% Recovery	True Value QC	RPD	Qualifier
Benzene*	<0.050	0.050	12/16/2025	ND	1.81	90.3	2.00	2.04	
Toluene*	<0.050	0.050	12/16/2025	ND	1.93	96.3	2.00	0.569	
Ethylbenzene*	<0.050	0.050	12/16/2025	ND	1.91	95.3	2.00	0.745	
Total Xylenes*	<0.150	0.150	12/16/2025	ND	5.76	96.1	6.00	0.457	
Total BTEX	<0.300	0.300	12/16/2025	ND					

Surrogate: 4-Bromofluorobenzene (PID) 112 % 70.4-141

Chloride, SM4500CI-B		mg/kg		Analyzed By: KH					
Analyte	Result	Reporting Limit	Analyzed	Method Blank	BS	% Recovery	True Value QC	RPD	Qualifier
Chloride	48.0	16.0	12/17/2025	ND	416	104	400	0.00	

TPH 8015M		mg/kg		Analyzed By: MS					
Analyte	Result	Reporting Limit	Analyzed	Method Blank	BS	% Recovery	True Value QC	RPD	Qualifier
GRO C6-C10*	<10.0	10.0	12/17/2025	ND	206	103	200	2.11	
DRO >C10-C28*	<10.0	10.0	12/17/2025	ND	232	116	200	2.21	
EXT DRO >C28-C36	<10.0	10.0	12/17/2025	ND					

Surrogate: 1-Chlorooctane 93.2 % 52.4-130

Surrogate: 1-Chlorooctadecane 90.1 % 39.9-141

Cardinal Laboratories

\*=Accredited Analyte

PLEASE NOTE: Liability and Damages. Cardinal's liability and client's exclusive remedy for any claim arising, whether based in contract or tort, shall be limited to the amount paid by client for analyses. All claims, including those for negligence and any other cause whatsoever shall be deemed waived unless made in writing and received by Cardinal within thirty (30) days after completion of the applicable service. In no event shall Cardinal be liable for incidental or consequential damages, including, without limitation, business interruptions, loss of use, or loss of profits incurred by client, its subsidiaries, affiliates or successors arising out of or related to the performance of the services hereunder by Cardinal, regardless of whether such claim is based upon any of the above stated reasons or otherwise. Results relate only to the samples identified above. This report shall not be reproduced except in full with written approval of Cardinal Laboratories.

Celey D. Keene, Lab Director/Quality Manager



PHONE (575) 393-2326 ° 101 E. MARLAND ° HOBBS, NM 88240

Notes and Definitions

- QM-07 The spike recovery was outside acceptance limits for the MS and/or MSD. The batch was accepted based on acceptable LCS recovery.
ND Analyte NOT DETECTED at or above the reporting limit
RPD Relative Percent Difference
\*\* Samples not received at proper temperature of 6°C or below.
\*\*\* Insufficient time to reach temperature.
- Chloride by SM4500Cl-B does not require samples be received at or below 6°C
Samples reported on an as received basis (wet) unless otherwise noted on report

Cardinal Laboratories

\*=Accredited Analyte

PLEASE NOTE: Liability and Damages. Cardinal's liability and client's exclusive remedy for any claim arising, whether based in contract or tort, shall be limited to the amount paid by client for analyses. All claims, including those for negligence and any other cause whatsoever shall be deemed waived unless made in writing and received by Cardinal within thirty (30) days after completion of the applicable service.

Celey D. Keene

Celey D. Keene, Lab Director/Quality Manager

Chain of Custody

Work Order No: 1857777

Page 1 of 1

Project Manager: Corner Moehring  
 Company Name: Carmona Resources  
 Address: 310 W Wall St Ste 500  
 Midland, TX 79701  
 City, State ZIP: Midland, TX 79701  
 Phone: 432-813-6823

Bill to: (if different)  
 Company Name: EOG Resources  
 Address: 5509 Champions Dr  
 Midland, TX 79706  
 City, State ZIP: Midland, TX 79706

Email: Todd Wells@ecorresources.com

Work Order Comments  
 Program: UST/PST  PRP  Brownfields  RRC  Superfund   
 State of Project: Reporting Level II  Level III  PST/UST  RRP  Level IV   
 Deliverables: EDD  ADaPT  Other:

Project Name: Driver 14 State #502  
 Project Number: 3039  
 Project Location: Lea County, NM  
 Sampler's Name: JM

Turn Around:  Routine  Rush  
 Due Date: 24 HR TAT

PO #:   
 Temp Blank: Yes  No   
 Thermometer ID: #148  
 Received Intact: Yes  No   
 Cooler Custody Seals: Yes  No   
 Sample Custody Seals: Yes  No   
 Total Containers: 57

Wet Ice: Yes  No   
 Correction Factor: 5.4  
 Temperature Reading: 5.7  
 Corrected Temperature:

Sample Identification	Date	Time	Soil	Water	Grab/Comp	# of Cont	Parameters			Sample Comments
							BTEX 8021B	TPH 8015M (GRO + DRO + MRO)	Chloride 4500	
CS-1 (3')	10/15/2025		X		C	1	X	X	X	
CS-2 (3')	10/15/2025		X		C	1	X	X	X	
CS-3 (3')	10/15/2025		X		C	1	X	X	X	
SW-1 (3')	10/15/2025		X		C	1	X	X	X	
SW-2 (3')	10/15/2025		X		C	1	X	X	X	
SW-3 (3')	10/15/2025		X		C	1	X	X	X	
SW-4 (3')	10/15/2025		X		C	1	X	X	X	
SW-5 (3')	10/15/2025		X		C	1	X	X	X	
SW-6 (3')	10/15/2025		X		C	1	X	X	X	

Comments: Email to Mike Carmona / mcarmona@carmonarresources.com and Corner Moehring / cmoehring@carmonarresources.com

Relinquished by: (Signature) *[Signature]* Date/Time: 12/16/25

Received by: (Signature) *[Signature]* Date/Time: 12/16/25



PHONE (575) 393-2326 ° 101 E. MARLAND ° HOBBS, NM 88240

---

December 17, 2025

CONNER MOEHRING

CARMONA RESOURCES

310 W WALL ST, SUITE 500

MIDLAND, TX 79701

RE: DRIVER 14 STATE #502

Enclosed are the results of analyses for samples received by the laboratory on 12/16/25 14:50.

Cardinal Laboratories is accredited through Texas NELAP under certificate number TX-C25-00101. Accreditation applies to drinking water, non-potable water and solid and chemical materials. All accredited analytes are denoted by an asterisk (\*). For a complete list of accredited analytes and matrices visit the TCEQ website at [www.tceq.texas.gov/field/qa/lab\\_accred\\_certif.html](http://www.tceq.texas.gov/field/qa/lab_accred_certif.html).

Cardinal Laboratories is accredited through the State of Colorado Department of Public Health and Environment for:

Method EPA 552.2	Haloacetic Acids (HAA-5)
Method EPA 524.2	Total Trihalomethanes (TTHM)
Method EPA 524.4	Regulated VOCs (V1, V2, V3)

Accreditation applies to public drinking water matrices.

This report meets NELAP requirements and is made up of a cover page, analytical results, and a copy of the original chain-of-custody. If you have any questions concerning this report, please feel free to contact me.

Sincerely,

A handwritten signature in black ink that reads "Celey D. Keene".

Celey D. Keene

Lab Director/Quality Manager



PHONE (575) 393-2326 ° 101 E. MARLAND ° HOBBS, NM 88240

**Analytical Results For:**

CARMONA RESOURCES  
 CONNER MOEHRING  
 310 W WALL ST, SUITE 500  
 MIDLAND TX, 79701  
 Fax To:

Received:	12/16/2025	Sampling Date:	12/15/2025
Reported:	12/17/2025	Sampling Type:	Soil
Project Name:	DRIVER 14 STATE #502	Sampling Condition:	Cool & Intact
Project Number:	3039	Sample Received By:	Shalyn Rodriguez
Project Location:	EOG-LEA COUNTY, NM		

**Sample ID: BACKFILL SAMPLE (H257778-01)**

BTEX 8021B		mg/kg		Analyzed By: JH					
Analyte	Result	Reporting Limit	Analyzed	Method Blank	BS	% Recovery	True Value QC	RPD	Qualifier
Benzene*	<0.050	0.050	12/16/2025	ND	1.81	90.3	2.00	2.04	
Toluene*	<0.050	0.050	12/16/2025	ND	1.93	96.3	2.00	0.569	
Ethylbenzene*	<0.050	0.050	12/16/2025	ND	1.91	95.3	2.00	0.745	
Total Xylenes*	<0.150	0.150	12/16/2025	ND	5.76	96.1	6.00	0.457	
Total BTEX	<0.300	0.300	12/16/2025	ND					

Surrogate: 4-Bromofluorobenzene (PID) 112 % 70.4-141

Chloride, SM4500Cl-B		mg/kg		Analyzed By: KH					
Analyte	Result	Reporting Limit	Analyzed	Method Blank	BS	% Recovery	True Value QC	RPD	Qualifier
Chloride	80.0	16.0	12/17/2025	ND	416	104	400	0.00	

TPH 8015M		mg/kg		Analyzed By: MS					
Analyte	Result	Reporting Limit	Analyzed	Method Blank	BS	% Recovery	True Value QC	RPD	Qualifier
GRO C6-C10*	<10.0	10.0	12/17/2025	ND	220	110	200	0.711	
DRO >C10-C28*	<10.0	10.0	12/17/2025	ND	232	116	200	0.392	
EXT DRO >C28-C36	<10.0	10.0	12/17/2025	ND					

Surrogate: 1-Chlorooctane 96.5 % 52.4-130

Surrogate: 1-Chlorooctadecane 97.9 % 39.9-141

Cardinal Laboratories

\*=Accredited Analyte

PLEASE NOTE: Liability and Damages. Cardinal's liability and client's exclusive remedy for any claim arising, whether based in contract or tort, shall be limited to the amount paid by client for analyses. All claims, including those for negligence and any other cause whatsoever shall be deemed waived unless made in writing and received by Cardinal within thirty (30) days after completion of the applicable service. In no event shall Cardinal be liable for incidental or consequential damages, including, without limitation, business interruptions, loss of use, or loss of profits incurred by client, its subsidiaries, affiliates or successors arising out of or related to the performance of the services hereunder by Cardinal, regardless of whether such claim is based upon any of the above stated reasons or otherwise. Results relate only to the samples identified above. This report shall not be reproduced except in full with written approval of Cardinal Laboratories.

Celey D. Keene, Lab Director/Quality Manager



PHONE (575) 393-2326 ° 101 E. MARLAND ° HOBBS, NM 88240

**Notes and Definitions**

- ND Analyte NOT DETECTED at or above the reporting limit
- RPD Relative Percent Difference
- \*\* Samples not received at proper temperature of 6°C or below.
- \*\*\* Insufficient time to reach temperature.
- Chloride by SM4500Cl-B does not require samples be received at or below 6°C  
Samples reported on an as received basis (wet) unless otherwise noted on report

Cardinal Laboratories

\*=Accredited Analyte

PLEASE NOTE: Liability and Damages. Cardinal's liability and client's exclusive remedy for any claim arising, whether based in contract or tort, shall be limited to the amount paid by client for analyses. All claims, including those for negligence and any other cause whatsoever shall be deemed waived unless made in writing and received by Cardinal within thirty (30) days after completion of the applicable service. In no event shall Cardinal be liable for incidental or consequential damages, including, without limitation, business interruptions, loss of use, or loss of profits incurred by client, its subsidiaries, affiliates or successors arising out of or related to the performance of the services hereunder by Cardinal, regardless of whether such claim is based upon any of the above stated reasons or otherwise. Results relate only to the samples identified above. This report shall not be reproduced except in full with written approval of Cardinal Laboratories.

Celey D. Keene, Lab Director/Quality Manager

Chain of Custody

Work Order No:

185-7778

Page 1 of 1

Project Manager: Corner Moehring  
 Company Name: Carmona Resources  
 Address: 310 W Wall St Ste 500  
 City, State ZIP: Midland, TX 79701  
 Phone: 432-813-6823

Bill to: (if different)  
 Company Name: EOG Resources  
 Address: 5509 Champions Dr  
 City, State ZIP: Midland, TX 79706

Email: Todd Wells@eogresources.com

Work Order Comments  
 Program:  UST/PST  PRP  Brownfields  RRC  Superfund   
 State of Project:  Level II  Level III  P-ST/UST  RRP  Level IV   
 Reporting Level:  EDD  ADAPT  Other:

Sample Identification	Date	Time	Soil	Water	Grab/Comp	# of Cont	Parameters	ANALYSIS REQUEST	Preservative Codes	Sample Comments
Backfill Sample	10/15/2025		X		C	1	BTEX 8021B TPH 8015M (GRO + DRO + MRO) Chloride 4500		None: NO Cool: Cool HCL: HC H <sub>2</sub> SO <sub>4</sub> : H <sub>2</sub> H <sub>3</sub> PO <sub>4</sub> : HP NAHSO <sub>4</sub> : NABIS Na <sub>2</sub> S <sub>2</sub> O <sub>5</sub> : NaSO <sub>3</sub> Zn Acetate+NaOH: Zn NaOH+Ascorbic Acid: SAPC	

Comments: Email to Mike Carmona / mcarmona@carmonaresources.com and Corner Moehring / cmoehring@carmonaresources.com

Relinquished by: (Signature) *[Signature]* Date/Time: 10/15/25

Received by: (Signature) *[Signature]* Date/Time: 10/15/25

Sante Fe Main Office  
Phone: (505) 476-3441

General Information  
Phone: (505) 629-6116

Online Phone Directory  
<https://www.emnrd.nm.gov/ocd/contact-us>

**State of New Mexico**  
**Energy, Minerals and Natural Resources**  
**Oil Conservation Division**  
**1220 S. St Francis Dr.**  
**Santa Fe, NM 87505**

QUESTIONS

Action 541437

**QUESTIONS**

Operator: EOG RESOURCES INC 5509 Champions Drive Midland, TX 79706	OGRID: 7377
	Action Number: 541437
	Action Type: [C-141] Remediation Closure Request C-141 (C-141-v-Closure)

**QUESTIONS**

<b>Prerequisites</b>	
Incident ID (n#)	nAPP2528652444
Incident Name	NAPP2528652444 DRIVER 14 STATE #502H @ D-14-23S-33E
Incident Type	Produced Water Release
Incident Status	Remediation Closure Report Received

<b>Location of Release Source</b>	
<i>Please answer all the questions in this group.</i>	
Site Name	Driver 14 State #502H
Date Release Discovered	10/11/2025
Surface Owner	State

<b>Incident Details</b>	
<i>Please answer all the questions in this group.</i>	
Incident Type	Produced Water Release
Did this release result in a fire or is the result of a fire	No
Did this release result in any injuries	No
Has this release reached or does it have a reasonable probability of reaching a watercourse	No
Has this release endangered or does it have a reasonable probability of endangering public health	No
Has this release substantially damaged or will it substantially damage property or the environment	No
Is this release of a volume that is or may with reasonable probability be detrimental to fresh water	No

<b>Nature and Volume of Release</b>	
<i>Material(s) released, please answer all that apply below. Any calculations or specific justifications for the volumes provided should be attached to the follow-up C-141 submission.</i>	
Crude Oil Released (bbls) Details	Cause: Overflow - Tank, Pit, Etc.   Production Tank   Crude Oil   Released: 1 BBL   Recovered: 1 BBL   Lost: 0 BBL.
Produced Water Released (bbls) Details	Cause: Overflow - Tank, Pit, Etc.   Production Tank   Produced Water   Released: 6 BBL   Recovered: 4 BBL   Lost: 2 BBL.
Is the concentration of chloride in the produced water >10,000 mg/l	Yes
Condensate Released (bbls) Details	Not answered.
Natural Gas Vented (Mcf) Details	Not answered.
Natural Gas Flared (Mcf) Details	Not answered.
Other Released Details	Not answered.
Are there additional details for the questions above (i.e. any answer containing Other, Specify, Unknown, and/or Fire, or any negative lost amounts)	Not answered.

Sante Fe Main Office  
Phone: (505) 476-3441

General Information  
Phone: (505) 629-6116

Online Phone Directory  
<https://www.emnrd.nm.gov/ocd/contact-us>

**State of New Mexico**  
**Energy, Minerals and Natural Resources**  
**Oil Conservation Division**  
**1220 S. St Francis Dr.**  
**Santa Fe, NM 87505**

QUESTIONS, Page 2

Action 541437

**QUESTIONS (continued)**

Operator: EOG RESOURCES INC 5509 Champions Drive Midland, TX 79706	OGRID: 7377
	Action Number: 541437
	Action Type: [C-141] Remediation Closure Request C-141 (C-141-v-Closure)

**QUESTIONS**

<b>Nature and Volume of Release (continued)</b>	
Is this a gas only submission (i.e. only significant Mcf values reported)	<b>No, according to supplied volumes this does not appear to be a "gas only" report.</b>
Was this a major release as defined by Subsection A of 19.15.29.7 NMAC	<b>No</b>
Reasons why this would be considered a submission for a notification of a major release	<i>Unavailable.</i>
<i>With the implementation of the 19.15.27 NMAC (05/25/2021), venting and/or flaring of natural gas (i.e. gas only) are to be submitted on the C-129 form.</i>	

**Initial Response**

*The responsible party must undertake the following actions immediately unless they could create a safety hazard that would result in injury.*

The source of the release has been stopped	<b>True</b>
The impacted area has been secured to protect human health and the environment	<b>True</b>
Released materials have been contained via the use of berms or dikes, absorbent pads, or other containment devices	<b>True</b>
All free liquids and recoverable materials have been removed and managed appropriately	<b>True</b>
If all the actions described above have not been undertaken, explain why	<b>na</b>

*Per Paragraph (4) of Subsection B of 19.15.29.8 NMAC the responsible party may commence remediation immediately after discovery of a release. If remediation has begun, please prepare and attach a narrative of actions to date in the follow-up C-141 submission. If remedial efforts have been successfully completed or if the release occurred within a lined containment area (see Subparagraph (a) of Paragraph (5) of Subsection A of 19.15.29.11 NMAC), please prepare and attach all information needed for closure evaluation in the follow-up C-141 submission.*

I hereby certify that the information given above is true and complete to the best of my knowledge and understand that pursuant to OCD rules and regulations all operators are required to report and/or file certain release notifications and perform corrective actions for releases which may endanger public health or the environment. The acceptance of a C-141 report by the OCD does not relieve the operator of liability should their operations have failed to adequately investigate and remediate contamination that pose a threat to groundwater, surface water, human health or the environment. In addition, OCD acceptance of a C-141 report does not relieve the operator of responsibility for compliance with any other federal, state, or local laws and/or regulations.

I hereby agree and sign off to the above statement	Name: <b>Todd Wells</b> Title: <b>Safety and Environmental Specialist</b> Email: <b>Todd_Wells@eogresources.com</b> Date: <b>01/08/2026</b>
--	--

Sante Fe Main Office  
Phone: (505) 476-3441

General Information  
Phone: (505) 629-6116

Online Phone Directory  
<https://www.emnrd.nm.gov/ocd/contact-us>

**State of New Mexico**  
**Energy, Minerals and Natural Resources**  
**Oil Conservation Division**  
**1220 S. St Francis Dr.**  
**Santa Fe, NM 87505**

QUESTIONS, Page 3

Action 541437

**QUESTIONS (continued)**

Operator: EOG RESOURCES INC 5509 Champions Drive Midland, TX 79706	OGRID: 7377
	Action Number: 541437
	Action Type: [C-141] Remediation Closure Request C-141 (C-141-v-Closure)

**QUESTIONS**

<b>Site Characterization</b>	
<i>Please answer all the questions in this group (only required when seeking remediation plan approval and beyond). This information must be provided to the appropriate district office no later than 90 days after the release discovery date.</i>	
What is the shallowest depth to groundwater beneath the area affected by the release in feet below ground surface (ft bgs)	Between 75 and 100 (ft.)
What method was used to determine the depth to ground water	U.S. Geological Survey
Did this release impact groundwater or surface water	No
<b>What is the minimum distance, between the closest lateral extents of the release and the following surface areas:</b>	
A continuously flowing watercourse or any other significant watercourse	Between ½ and 1 (mi.)
Any lakebed, sinkhole, or playa lake (measured from the ordinary high-water mark)	Greater than 5 (mi.)
An occupied permanent residence, school, hospital, institution, or church	Greater than 5 (mi.)
A spring or a private domestic fresh water well used by less than five households for domestic or stock watering purposes	Greater than 5 (mi.)
Any other fresh water well or spring	Between 1000 (ft.) and ½ (mi.)
Incorporated municipal boundaries or a defined municipal fresh water well field	Greater than 5 (mi.)
A wetland	Between ½ and 1 (mi.)
A subsurface mine	Greater than 5 (mi.)
An (non-karst) unstable area	Between ½ and 1 (mi.)
Categorize the risk of this well / site being in a karst geology	Low
A 100-year floodplain	Greater than 5 (mi.)
Did the release impact areas not on an exploration, development, production, or storage site	No

<b>Remediation Plan</b>	
<i>Please answer all the questions that apply or are indicated. This information must be provided to the appropriate district office no later than 90 days after the release discovery date.</i>	
Requesting a remediation plan approval with this submission	Yes
<i>Attach a comprehensive report demonstrating the lateral and vertical extents of soil contamination associated with the release have been determined, pursuant to 19.15.29.11 NMAC and 19.15.29.13 NMAC.</i>	
Have the lateral and vertical extents of contamination been fully delineated	Yes
Was this release entirely contained within a lined containment area	No
<b>Soil Contamination Sampling:</b> (Provide the highest observable value for each, in milligrams per kilograms.)	
Chloride (EPA 300.0 or SM4500 Cl B)	1740
TPH (GRO+DRO+MRO) (EPA SW-846 Method 8015M)	8062
GRO+DRO (EPA SW-846 Method 8015M)	7042
BTEX (EPA SW-846 Method 8021B or 8260B)	94.2
Benzene (EPA SW-846 Method 8021B or 8260B)	0
<i>Per Subsection B of 19.15.29.11 NMAC unless the site characterization report includes completed efforts at remediation, the report must include a proposed remediation plan in accordance with 19.15.29.12 NMAC, which includes the anticipated timelines for beginning and completing the remediation.</i>	
On what estimated date will the remediation commence	12/15/2025
On what date will (or did) the final sampling or liner inspection occur	12/15/2025
On what date will (or was) the remediation complete(d)	12/18/2025
What is the estimated surface area (in square feet) that will be reclaimed	468
What is the estimated volume (in cubic yards) that will be reclaimed	65
What is the estimated surface area (in square feet) that will be remediated	468
What is the estimated volume (in cubic yards) that will be remediated	65
<i>These estimated dates and measurements are recognized to be the best guess or calculation at the time of submission and may (be) change(d) over time as more remediation efforts are completed.</i>	
<i>The OCD recognizes that proposed remediation measures may have to be minimally adjusted in accordance with the physical realities encountered during remediation. If the responsible party has any need to significantly deviate from the remediation plan proposed, then it should consult with the division to determine if another remediation plan submission is required.</i>	

Sante Fe Main Office  
Phone: (505) 476-3441

General Information  
Phone: (505) 629-6116

Online Phone Directory  
<https://www.emnrd.nm.gov/ocd/contact-us>

**State of New Mexico**  
**Energy, Minerals and Natural Resources**  
**Oil Conservation Division**  
**1220 S. St Francis Dr.**  
**Santa Fe, NM 87505**

QUESTIONS, Page 4

Action 541437

**QUESTIONS (continued)**

Operator: EOG RESOURCES INC 5509 Champions Drive Midland, TX 79706	OGRID: 7377
	Action Number: 541437
	Action Type: [C-141] Remediation Closure Request C-141 (C-141-v-Closure)

**QUESTIONS**

**Remediation Plan (continued)**

Please answer all the questions that apply or are indicated. This information must be provided to the appropriate district office no later than 90 days after the release discovery date.

**This remediation will (or is expected to) utilize the following processes to remediate / reduce contaminants:**

(Select all answers below that apply.)

(Ex Situ) Excavation and <b>off-site</b> disposal (i.e. dig and haul, hydrovac, etc.)	Yes
Which OCD approved facility will be used for <b>off-site</b> disposal	fJEG1635837366 OWL LANDFILL JAL
<b>OR</b> which OCD approved well (API) will be used for <b>off-site</b> disposal	Not answered.
<b>OR</b> is the <b>off-site</b> disposal site, to be used, out-of-state	Not answered.
<b>OR</b> is the <b>off-site</b> disposal site, to be used, an NMED facility	Not answered.
(Ex Situ) Excavation and <b>on-site</b> remediation (i.e. On-Site Land Farms)	Not answered.
(In Situ) Soil Vapor Extraction	Not answered.
(In Situ) Chemical processing (i.e. Soil Shredding, Potassium Permanganate, etc.)	Not answered.
(In Situ) Biological processing (i.e. Microbes / Fertilizer, etc.)	Not answered.
(In Situ) Physical processing (i.e. Soil Washing, Gypsum, Disking, etc.)	Not answered.
Ground Water Abatement pursuant to 19.15.30 NMAC	Not answered.
OTHER (Non-listed remedial process)	Not answered.

Per Subsection B of 19.15.29.11 NMAC unless the site characterization report includes completed efforts at remediation, the report must include a proposed remediation plan in accordance with 19.15.29.12 NMAC, which includes the anticipated timelines for beginning and completing the remediation.

I hereby certify that the information given above is true and complete to the best of my knowledge and understand that pursuant to OCD rules and regulations all operators are required to report and/or file certain release notifications and perform corrective actions for releases which may endanger public health or the environment. The acceptance of a C-141 report by the OCD does not relieve the operator of liability should their operations have failed to adequately investigate and remediate contamination that pose a threat to groundwater, surface water, human health or the environment. In addition, OCD acceptance of a C-141 report does not relieve the operator of responsibility for compliance with any other federal, state, or local laws and/or regulations.

I hereby agree and sign off to the above statement	Name: Todd Wells Title: Safety and Environmental Specialist Email: Todd_Wells@eogresources.com Date: 01/08/2026
--	--

The OCD recognizes that proposed remediation measures may have to be minimally adjusted in accordance with the physical realities encountered during remediation. If the responsible party has any need to significantly deviate from the remediation plan proposed, then it should consult with the division to determine if another remediation plan submission is required.

Sante Fe Main Office  
Phone: (505) 476-3441

General Information  
Phone: (505) 629-6116

Online Phone Directory  
<https://www.emnrd.nm.gov/ocd/contact-us>

**State of New Mexico**  
**Energy, Minerals and Natural Resources**  
**Oil Conservation Division**  
**1220 S. St Francis Dr.**  
**Santa Fe, NM 87505**

QUESTIONS, Page 5

Action 541437

**QUESTIONS (continued)**

Operator: EOG RESOURCES INC 5509 Champions Drive Midland, TX 79706	OGRID: 7377
	Action Number: 541437
	Action Type: [C-141] Remediation Closure Request C-141 (C-141-v-Closure)

**QUESTIONS**

<b>Deferral Requests Only</b>	
<i>Only answer the questions in this group if seeking a deferral upon approval this submission. Each of the following items must be confirmed as part of any request for deferral of remediation.</i>	
Requesting a deferral of the remediation closure due date with the approval of this submission	No

Sante Fe Main Office  
Phone: (505) 476-3441

General Information  
Phone: (505) 629-6116

Online Phone Directory  
<https://www.emnrd.nm.gov/ocd/contact-us>

**State of New Mexico**  
**Energy, Minerals and Natural Resources**  
**Oil Conservation Division**  
**1220 S. St Francis Dr.**  
**Santa Fe, NM 87505**

QUESTIONS, Page 6

Action 541437

**QUESTIONS (continued)**

Operator: EOG RESOURCES INC 5509 Champions Drive Midland, TX 79706	OGRID: 7377
	Action Number: 541437
	Action Type: [C-141] Remediation Closure Request C-141 (C-141-v-Closure)

**QUESTIONS**

<b>Sampling Event Information</b>	
Last sampling notification (C-141N) recorded	<b>533963</b>
Sampling date pursuant to Subparagraph (a) of Paragraph (1) of Subsection D of 19.15.29.12 NMAC	<b>12/15/2025</b>
What was the (estimated) number of samples that were to be gathered	<b>10</b>
What was the sampling surface area in square feet	<b>530</b>

<b>Remediation Closure Request</b>	
<i>Only answer the questions in this group if seeking remediation closure for this release because all remediation steps have been completed.</i>	
Requesting a remediation closure approval with this submission	Yes
Have the lateral and vertical extents of contamination been fully delineated	Yes
Was this release entirely contained within a lined containment area	No
All areas reasonably needed for production or subsequent drilling operations have been stabilized, returned to the sites existing grade, and have a soil cover that prevents ponding of water, minimizing dust and erosion	Yes
What was the total surface area (in square feet) remediated	468
What was the total volume (cubic yards) remediated	65
All areas not reasonably needed for production or subsequent drilling operations have been reclaimed to contain a minimum of four feet of non-waste contain earthen material with concentrations less than 600 mg/kg chlorides, 100 mg/kg TPH, 50 mg/kg BTEX, and 10 mg/kg Benzene	Yes
What was the total surface area (in square feet) reclaimed	468
What was the total volume (in cubic yards) reclaimed	65
Summarize any additional remediation activities not included by answers (above)	na

*The responsible party must attach information demonstrating they have complied with all applicable closure requirements and any conditions or directives of the OCD. This demonstration should be in the form of a comprehensive report (in .pdf format) including a scaled site map, sampling diagrams, relevant field notes, photographs of any excavation prior to backfilling, laboratory data including chain of custody documents of final sampling, and a narrative of the remedial activities. Refer to 19.15.29.12 NMAC.*

I hereby certify that the information given above is true and complete to the best of my knowledge and understand that pursuant to OCD rules and regulations all operators are required to report and/or file certain release notifications and perform corrective actions for releases which may endanger public health or the environment. The acceptance of a C-141 report by the OCD does not relieve the operator of liability should their operations have failed to adequately investigate and remediate contamination that pose a threat to groundwater, surface water, human health or the environment. In addition, OCD acceptance of a C-141 report does not relieve the operator of responsibility for compliance with any other federal, state, or local laws and/or regulations. The responsible party acknowledges they must substantially restore, reclaim, and re-vegetate the impacted surface area to the conditions that existed prior to the release or their final land use in accordance with 19.15.29.13 NMAC including notification to the OCD when reclamation and re-vegetation are complete.

I hereby agree and sign off to the above statement	Name: Todd Wells Title: Safety and Environmental Specialist Email: Todd_Wells@eogresources.com Date: 01/08/2026
--	--

Sante Fe Main Office  
Phone: (505) 476-3441

General Information  
Phone: (505) 629-6116

Online Phone Directory  
<https://www.emnrd.nm.gov/ocd/contact-us>

**State of New Mexico**  
**Energy, Minerals and Natural Resources**  
**Oil Conservation Division**  
**1220 S. St Francis Dr.**  
**Santa Fe, NM 87505**

QUESTIONS, Page 7

Action 541437

**QUESTIONS (continued)**

Operator: EOG RESOURCES INC 5509 Champions Drive Midland, TX 79706	OGRID: 7377
	Action Number: 541437
	Action Type: [C-141] Remediation Closure Request C-141 (C-141-v-Closure)

**QUESTIONS**

<b>Reclamation Report</b>	
<i>Only answer the questions in this group if all reclamation steps have been completed.</i>	
Requesting a reclamation approval with this submission	No

Sante Fe Main Office  
Phone: (505) 476-3441

General Information  
Phone: (505) 629-6116

Online Phone Directory  
<https://www.emnrd.nm.gov/ocd/contact-us>

**State of New Mexico**  
**Energy, Minerals and Natural Resources**  
**Oil Conservation Division**  
**1220 S. St Francis Dr.**  
**Santa Fe, NM 87505**

CONDITIONS

Action 541437

**CONDITIONS**

Operator: EOG RESOURCES INC 5509 Champions Drive Midland, TX 79706	OGRID: 7377
	Action Number: 541437
	Action Type: [C-141] Remediation Closure Request C-141 (C-141-v-Closure)

**CONDITIONS**

Created By	Condition	Condition Date
nvez	None	2/24/2026