



March 3, 2026

New Mexico Oil Conservation Division

New Mexico Energy, Minerals, and Natural Resources Department
1220 South St. Francis Drive
Santa Fe, New Mexico 87505

**Re: Closure Request
Columbus Fed 21 & 22H CTB
Incident Number NAPP2602458199
Lea County, New Mexico**

To Whom It May Concern:

COG Operating, LLC, (COG), has prepared this *Closure Request* to document the findings of a liner integrity inspection conducted at the Columbus Fed 21 & 22H CTB (Site) following the release of an oil/water mixture within a lined containment. Based on the liner integrity inspection activities, COG is submitting this Closure Request, describing assessment activities that have occurred and requesting no further action and closure for Incident Number NAPP2602458199.

SITE DESCRIPTION AND RELEASE SUMMARY

The site is located in Unit A, Section 34, Township 25 South, Range 33 East, in Lea County, New Mexico (32.093686, -103.552724) and is associated with oil and gas exploration and production operations on private land.

On January 24, 2026, field personnel discovered a leak on a water line causing six hundred (600) barrels of an oil/water mixture to be released into a lined containment. A vacuum truck was dispatched to the site to recover free-standing fluids and approximately five hundred ninety-nine (599) barrels of fluid were recovered. The water line was isolated to prevent fluid being further released. COG reported the release to the New Mexico Oil Conservation Division (NMOCD) and Bureau of Land Management on a *Release Notification Form C-141* (Form C-141) on January 24, 2026. The release was assigned Incident Number NAPP2602458199.

SITE CHARACTERIZATION AND CLOSURE CRITERIA

The site is located within a low karst area. Based on a review of the New Mexico Office of State Engineers databases, there is no known water source within a 0.50-mile radius of the location. The closest well is located approximately 0.51 miles Northeast of the Site in Unit Letter M, S26, T25S, R33E and was drilled in 1925. The well has a reported depth of 150' feet below ground surface and groundwater was encountered at 110'. Per the NMOCD regulatory criteria established in 19.15.29.12 NMAC, the following criteria were utilized in assessing the site.

- Benzene: 10 milligrams per kilogram (mg/kg).
- Benzene, toluene, ethylbenzene, and total xylenes (BTEX): 50 mg/kg.
- TPH: 100 mg/kg (GRO + DRO + MRO).
- Chloride: 600 mg/kg.

LINER INTEGRITY INSPECTION ACTIVITIES

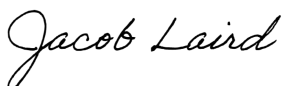
A 48-hour advance notice of the liner inspection was submitted to the NMOCD on February 23, 2026. Prior to conducting the liner integrity inspection, COG operations power washed the liner to remove dirt and debris and recover any residual produced water. A liner integrity inspection was conducted by Jacob Laird on February 26, 2026. Upon inspection, no rips, tears, holes, or damage was observed. The liner was determined to be sufficient, and all released fluids have been removed. Refer to photolog for details.

CLOSURE REQUEST

Based on the liner inspection throughout the facility, the liner was determined to be sufficient. The release was contained laterally by the lined containment and the liner was performing as designed. No further actions are required at the site. COG, LLC respectfully requests that the New Mexico Oil Conservation Division grant closure approval for Incident Number NAPP2602458199.

Should you have any questions or concerns please do not hesitate to contact me.

Sincerely,



Jacob Laird
Environmental Engineer
jacob.laird@conocophillips.com

Appendices:

Figures- Site Map Overview, Topography Map, Secondary Containment Map

Appendix A: NMOCD Correspondence

Appendix B: Photolog

Appendix C: Site Characterization and Ground Water

Figures: Site Maps



Overview Map

COG Operating, LLC
Columbus Fed 21 & 22 CTB
Lea County, New Mexico
32.093686, -103.552724



Topographical Map

COG Operating, LLC
Columbus Fed 21 & 22 CTB
Lea County, New Mexico
32.093686, -103.552724



Secondary Containment Map

COG Operating, LLC
Columbus Fed 21 & 22 CTB
Lea County, New Mexico
32.093686, -103.552724

Appendix A: NMOCD Correspondence

Received by OCD: 3/3/2026 5:29:26 AM

Known Volume (dropdown):

Released to Imaging: 3/11/2026 11:01:46 AM

Yes

Percentage of Oil if Spilled Fluid is a Mixture (%)

2%

Known Volume of Spill (bbl.)

600

Total Estimated Volume of Spilled Oil (bbl.)

10.20

Total Volume of Spilled Liquid other than Oil (bbl.)

589.80

Sante Fe Main Office
Phone: (505) 476-3441

General Information
Phone: (505) 629-6116

Online Phone Directory
<https://www.emnrd.nm.gov/ocd/contact-us>

State of New Mexico
Energy, Minerals and Natural Resources
Oil Conservation Division
1220 S. St Francis Dr.
Santa Fe, NM 87505

QUESTIONS

Action 546921

QUESTIONS

Operator: COG OPERATING LLC 600 W Illinois Ave Midland, TX 79701	OGRID: 229137
	Action Number: 546921
	Action Type: [C-141] Initial C-141 (C-141-v-Initial)

QUESTIONS

Prerequisites	
Incident ID (n#)	nAPP2602458199
Incident Name	NAPP2602458199 COLUMBUS 21 & 22H CTB @ FAPP2203353035
Incident Type	Release Other
Incident Status	Initial C-141 Received
Incident Facility	[fAPP2203353035] Columbus Fed 21&22H CTB - Battery

Location of Release Source	
<i>Please answer all the questions in this group.</i>	
Site Name	Columbus 21 & 22H CTB
Date Release Discovered	01/24/2026
Surface Owner	Private

Incident Details	
<i>Please answer all the questions in this group.</i>	
Incident Type	Release Other
Did this release result in a fire or is the result of a fire	No
Did this release result in any injuries	No
Has this release reached or does it have a reasonable probability of reaching a watercourse	No
Has this release endangered or does it have a reasonable probability of endangering public health	No
Has this release substantially damaged or will it substantially damage property or the environment	No
Is this release of a volume that is or may with reasonable probability be detrimental to fresh water	No

Nature and Volume of Release	
<i>Material(s) released, please answer all that apply below. Any calculations or specific justifications for the volumes provided should be attached to the follow-up C-141 submission.</i>	
Crude Oil Released (bbls) Details	Cause: Freeze Pipeline (Any) Crude Oil Released: 10 BBL Recovered: 10 BBL Lost: 0 BBL.
Produced Water Released (bbls) Details	Cause: Freeze Pipeline (Any) Produced Water Released: 590 BBL Recovered: 589 BBL Lost: 1 BBL.
Is the concentration of chloride in the produced water >10,000 mg/l	Yes
Condensate Released (bbls) Details	Not answered.
Natural Gas Vented (Mcf) Details	Not answered.
Natural Gas Flared (Mcf) Details	Not answered.
Other Released Details	Not answered.
Are there additional details for the questions above (i.e. any answer containing Other, Specify, Unknown, and/or Fire, or any negative lost amounts)	Not answered.

Sante Fe Main Office
Phone: (505) 476-3441

General Information
Phone: (505) 629-6116

Online Phone Directory
<https://www.emnrd.nm.gov/ocd/contact-us>

State of New Mexico
Energy, Minerals and Natural Resources
Oil Conservation Division
1220 S. St Francis Dr.
Santa Fe, NM 87505

QUESTIONS, Page 2

Action 546921

QUESTIONS (continued)

Operator: COG OPERATING LLC 600 W Illinois Ave Midland, TX 79701	OGRID: 229137
	Action Number: 546921
	Action Type: [C-141] Initial C-141 (C-141-v-Initial)

QUESTIONS

Nature and Volume of Release (continued)	
Is this a gas only submission (i.e. only significant Mcf values reported)	No, according to supplied volumes this does not appear to be a "gas only" report.
Was this a major release as defined by Subsection A of 19.15.29.7 NMAC	Yes
Reasons why this would be considered a submission for a notification of a major release	From paragraph A. "Major release" determine using: (1) an unauthorized release of a volume, excluding gases, of 25 barrels or more.
<i>With the implementation of the 19.15.27 NMAC (05/25/2021), venting and/or flaring of natural gas (i.e. gas only) are to be submitted on the C-129 form.</i>	

Initial Response

The responsible party must undertake the following actions immediately unless they could create a safety hazard that would result in injury.

The source of the release has been stopped	True
The impacted area has been secured to protect human health and the environment	True
Released materials have been contained via the use of berms or dikes, absorbent pads, or other containment devices	True
All free liquids and recoverable materials have been removed and managed appropriately	True
If all the actions described above have not been undertaken, explain why	<i>Not answered.</i>

Per Paragraph (4) of Subsection B of 19.15.29.8 NMAC the responsible party may commence remediation immediately after discovery of a release. If remediation has begun, please prepare and attach a narrative of actions to date in the follow-up C-141 submission. If remedial efforts have been successfully completed or if the release occurred within a lined containment area (see Subparagraph (a) of Paragraph (5) of Subsection A of 19.15.29.11 NMAC), please prepare and attach all information needed for closure evaluation in the follow-up C-141 submission.

I hereby certify that the information given above is true and complete to the best of my knowledge and understand that pursuant to OCD rules and regulations all operators are required to report and/or file certain release notifications and perform corrective actions for releases which may endanger public health or the environment. The acceptance of a C-141 report by the OCD does not relieve the operator of liability should their operations have failed to adequately investigate and remediate contamination that pose a threat to groundwater, surface water, human health or the environment. In addition, OCD acceptance of a C-141 report does not relieve the operator of responsibility for compliance with any other federal, state, or local laws and/or regulations.

I hereby agree and sign off to the above statement	Name: Jacob Laird Title: Environmental Engineer Email: jacob.laird@conocophillips.com Date: 01/27/2026
----------------------------------------------------	-----------------------------------------------------------------------------------------------------------------

Sante Fe Main Office
Phone: (505) 476-3441

General Information
Phone: (505) 629-6116

Online Phone Directory
<https://www.emnrd.nm.gov/ocd/contact-us>

State of New Mexico
Energy, Minerals and Natural Resources
Oil Conservation Division
1220 S. St Francis Dr.
Santa Fe, NM 87505

QUESTIONS, Page 3

Action 546921

QUESTIONS (continued)

Operator: COG OPERATING LLC 600 W Illinois Ave Midland, TX 79701	OGRID: 229137
	Action Number: 546921
	Action Type: [C-141] Initial C-141 (C-141-v-Initial)

QUESTIONS

Site Characterization

Please answer all the questions in this group (only required when seeking remediation plan approval and beyond). This information must be provided to the appropriate district office no later than 90 days after the release discovery date.

What is the shallowest depth to groundwater beneath the area affected by the release in feet below ground surface (ft bgs)	Not answered.
What method was used to determine the depth to ground water	Not answered.
Did this release impact groundwater or surface water	Not answered.
What is the minimum distance, between the closest lateral extents of the release and the following surface areas:	
A continuously flowing watercourse or any other significant watercourse	Not answered.
Any lakebed, sinkhole, or playa lake (measured from the ordinary high-water mark)	Not answered.
An occupied permanent residence, school, hospital, institution, or church	Not answered.
A spring or a private domestic fresh water well used by less than five households for domestic or stock watering purposes	Not answered.
Any other fresh water well or spring	Not answered.
Incorporated municipal boundaries or a defined municipal fresh water well field	Not answered.
A wetland	Not answered.
A subsurface mine	Not answered.
An (non-karst) unstable area	Not answered.
Categorize the risk of this well / site being in a karst geology	Not answered.
A 100-year floodplain	Not answered.
Did the release impact areas not on an exploration, development, production, or storage site	Not answered.

Remediation Plan

Please answer all the questions that apply or are indicated. This information must be provided to the appropriate district office no later than 90 days after the release discovery date.

Requesting a remediation plan approval with this submission	No
<i>The OCD recognizes that proposed remediation measures may have to be minimally adjusted in accordance with the physical realities encountered during remediation. If the responsible party has any need to significantly deviate from the remediation plan proposed, then it should consult with the division to determine if another remediation plan submission is required.</i>	

Sante Fe Main Office
Phone: (505) 476-3441

General Information
Phone: (505) 629-6116

Online Phone Directory
<https://www.emnrd.nm.gov/ocd/contact-us>

State of New Mexico
Energy, Minerals and Natural Resources
Oil Conservation Division
1220 S. St Francis Dr.
Santa Fe, NM 87505

CONDITIONS

Action 546921

CONDITIONS

Operator: COG OPERATING LLC 600 W Illinois Ave Midland, TX 79701	OGRID: 229137
	Action Number: 546921
	Action Type: [C-141] Initial C-141 (C-141-v-Initial)

CONDITIONS

Created By	Condition	Condition Date
scott.rodgers	None	1/27/2026

Sante Fe Main Office
Phone: (505) 476-3441

General Information
Phone: (505) 629-6116

Online Phone Directory
<https://www.emnrd.nm.gov/ocd/contact-us>

State of New Mexico
Energy, Minerals and Natural Resources
Oil Conservation Division
1220 S. St Francis Dr.
Santa Fe, NM 87505

QUESTIONS

Action 556753

QUESTIONS

Operator: COG OPERATING LLC 600 W Illinois Ave Midland, TX 79701	OGRID: 229137
	Action Number: 556753
	Action Type: [NOTIFY] Notification Of Liner Inspection (C-141L)

QUESTIONS

Prerequisites	
Incident ID (n#)	nAPP2602458199
Incident Name	NAPP2602458199 COLUMBUS 21 & 22H CTB @ FAPP2203353035
Incident Type	Release Other
Incident Status	Initial C-141 Approved
Incident Facility	[fAPP2203353035] Columbus Fed 21&22H CTB - Battery

Location of Release Source	
Site Name	Columbus 21 & 22H CTB
Date Release Discovered	01/24/2026
Surface Owner	Private

Liner Inspection Event Information	
<i>Please answer all the questions in this group.</i>	
What is the liner inspection surface area in square feet	5,952
Have all the impacted materials been removed from the liner	Yes
Liner inspection date pursuant to Subparagraph (a) of Paragraph (5) of Subsection A of 19.15.29.11 NMAC	02/26/2026
Time liner inspection will commence	12:00 PM
Please provide any information necessary for observers to liner inspection	Jacob Laird 575-703-5482
Please provide any information necessary for navigation to liner inspection site	32.093686, -103.552724

Sante Fe Main Office
Phone: (505) 476-3441

General Information
Phone: (505) 629-6116

Online Phone Directory
<https://www.emnrd.nm.gov/ocd/contact-us>

State of New Mexico
Energy, Minerals and Natural Resources
Oil Conservation Division
1220 S. St Francis Dr.
Santa Fe, NM 87505

CONDITIONS

Action 556753

CONDITIONS

Operator: COG OPERATING LLC 600 W Illinois Ave Midland, TX 79701	OGRID: 229137
	Action Number: 556753
	Action Type: [NOTIFY] Notification Of Liner Inspection (C-141L)

CONDITIONS

Created By	Condition	Condition Date
jlaire	Failure to notify the OCD of liner inspections including any changes in date/time per the requirements of 19.15.29.11.A(5)(a)(ii) NMAC, may result in the inspection not being accepted.	2/23/2026

Appendix B: Photolog

Photographic Log

<p>Facility: Columbus Federal 21 & 22 CTB</p> <p>County: Lea County, New Mexico</p> <p>Description: Facility Sign</p>	 <p>Date & Time: Thu, Feb 26, 2026 at 12:02:13 MST Position: -032.022597° / -103.555358° / 526.410 Altitude: 3327ft (1013.81m) Datum: WGS 84 Azimuth/Bearing: 181° 50'13" 3218mils True (±11") Elevation Angle: -12.3° Horizon Angle: +00.4° Zoom: 0.5X Columbus Federal 21 & 22 CTB</p> <p>COG OPERATING LLC COLUMBUS FEDERAL CTB UL A SEC.34-T25S-R33E LEA COUNTY</p> <p>-COLUMBUS FEDERAL 21H LEASE #30-025-43689- -COLUMBUS FEDERAL 22H LEASE #30-025-43693-</p>
<p>Facility: Columbus Federal 21 & 22 CTB</p> <p>County: Lea County, New Mexico</p> <p>Description: Original release photo from 1/24/2026</p>	
<p>Facility: Columbus Federal 21 & 22 CTB</p> <p>County: Lea County, New Mexico</p> <p>Description: Original release photo from 1/24/2026</p>	

Facility: Columbus Federal 21 & 22 CTB

County: Lea County, New Mexico

Description: View facing East. Lined area West of production tanks.



Facility: Columbus Federal 21 & 22 CTB

County: Lea County, New Mexico

Description: View facing East. Lined area West of production tanks.



Facility: Columbus Federal 21 & 22 CTB

County: Lea County, New Mexico

Description: View facing East. Lined area West of production tanks.



Facility: Columbus Federal 21 & 22 CTB

County: Lea County, New Mexico

Description: View facing East. Lined area West of production tanks and production piping.



Facility: Columbus Federal 21 & 22 CTB

County: Lea County, New Mexico

Description: View facing East. Lined area West of production tanks.



Facility: Columbus Federal 21 & 22 CTB

County: Lea County, New Mexico

Description: View facing East. Lined area West of production tanks.



Facility: Columbus Federal 21 & 22 CTB

County: Lea County, New Mexico

Description: View facing East. Lined area West of production tanks.



Facility: Columbus Federal 21 & 22 CTB

County: Lea County, New Mexico

Description: View facing East. Lined area West of production tanks and production piping.



Facility: Columbus Federal 21 & 22 CTB

County: Lea County, New Mexico

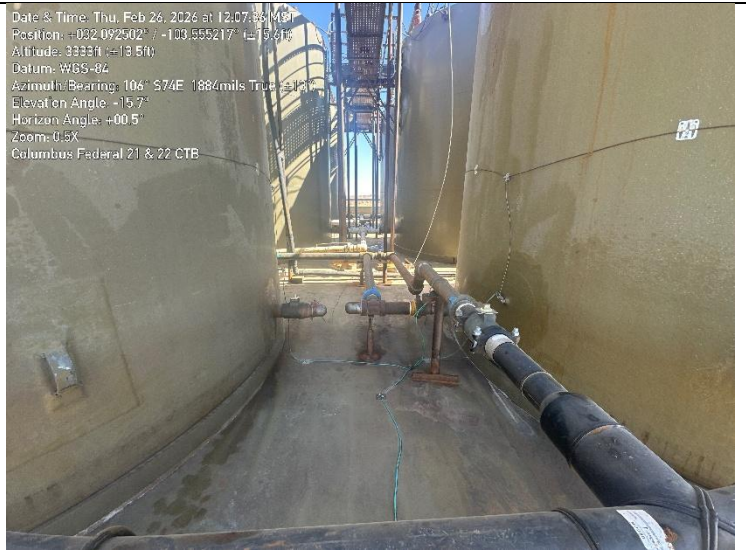
Description: View facing East. Lined area North of production tanks.



Facility: Columbus Federal 21 & 22 CTB

County: Lea County, New Mexico

Description: View facing East. Lined area between production tanks.



Facility: Columbus Federal 21 & 22 CTB

County: Lea County, New Mexico

Description: View facing East. Lined area South of production tanks and production piping.



Facility: Columbus Federal 21 & 22 CTB

County: Lea County, New Mexico

Description: View facing South. Lined area between production tanks.



Facility: Columbus Federal 21 & 22 CTB

County: Lea County, New Mexico

Description: View facing North. Lined area between production tanks.



Facility: Columbus Federal 21 & 22 CTB

County: Lea County, New Mexico

Description: View facing East. Lined area North of production tanks.






Facility: Columbus Federal 21 & 22 CTB

County: Lea County, New Mexico

Description: View facing East. Lined area between production tanks.



<p>Facility: Columbus Federal 21 & 22 CTB</p> <p>County: Lea County, New Mexico</p> <p>Description: View facing East. Lined area South of production tanks and production piping.</p>	<p>Date & Time: Thu, Feb 26, 2026 at 12:09:59 MST Position: +032.092410° / -103.555174° (±32.0ft) Altitude: 3342ft (±21.2ft) Datum: WGS-84 Azimuth/Bearing: 107° S78E 1912mils True (±12°) Elevation Angle: +19.1° Horizon Angle: +00.1° Zoom: 0.5X Columbus Federal 21 & 22 CTB</p>  A photograph showing a lined concrete walkway between large industrial tanks. Several parallel pipes run along the walkway. The background shows a clear blue sky and a flat, arid landscape.
<p>Facility: Columbus Federal 21 & 22 CTB</p> <p>County: Lea County, New Mexico</p> <p>Description: View facing East. Lined area North of production tanks.</p>	<p>Date & Time: Thu, Feb 26, 2026 at 12:10:41 MST Position: +032.092554° / -103.555095° (±13.5ft) Altitude: 3343ft (±11.6ft) Datum: WGS-84 Azimuth/Bearing: 109° S71E 1938mils True (±10°) Elevation Angle: +13.5° Horizon Angle: +00.7° Zoom: 0.5X Columbus Federal 21 & 22 CTB</p>  A photograph showing a lined concrete walkway with a metal railing on the left. In the background, there are several large circular production tanks and other industrial structures under a clear blue sky.
<p>Facility: Columbus Federal 21 & 22 CTB</p> <p>County: Lea County, New Mexico</p> <p>Description: View facing East. Lined area between production tanks.</p>	<p>Date & Time: Thu, Feb 26, 2026 at 12:10:59 MST Position: +032.092489° / -103.555119° (±13.3ft) Altitude: 3342ft (±10.9ft) Datum: WGS-84 Azimuth/Bearing: 102° S78E 1813mils True (±11°) Elevation Angle: +19.4° Horizon Angle: +03.1° Zoom: 0.5X Columbus Federal 21 & 22 CTB</p>  A photograph showing a lined concrete walkway between two large industrial tanks. A metal railing is visible in the foreground. The scene is brightly lit, with shadows cast on the ground.

Facility: Columbus Federal 21 & 22 CTB

County: Lea County, New Mexico

Description: View facing East. Lined area South of production tanks.



Facility: Columbus Federal 21 & 22 CTB

County: Lea County, New Mexico

Description: View facing West. Lined area between production tanks.



Facility: Columbus Federal 21 & 22 CTB

County: Lea County, New Mexico

Description: View facing North. Lined area East of production tanks.



Facility: Columbus Federal 21 & 22 CTB

County: Lea County, New Mexico

Description: View facing South. Lined area East production equipment.



Appendix C: Site Characterization and Ground Water



New Mexico Office of the State Engineer Water Column/Average Depth to Water

(A CLW##### in the POD suffix indicates the POD has been replaced & no longer serves a water right file.)
(R=POD has been replaced, O=orphaned, C=the file is closed)
(quarters are smallest to largest)

POD Number	Code	Sub basin	County	Q64	Q16	Q4	Sec	Tws	Range	X	Y	Map	Distance (meters)	Well Depth (In feet)	Depth Water	Water Column
C.02313		CUB	LE	NE	SW	SW	26	25S	33E	636971.0	3552098.0 *		801	150	110	40

Average Depth to Water: **110 feet**

Minimum Depth: **110 feet**

Maximum Depth: **110 feet**

Record Count: 1

Basin/County Search:

County: LE

UTM Filters (in meters):

Easting: 636342.21

Northing: 3551601.26

Radius: 804

* UTM location was derived from PLSS - see Help

The data is furnished by the NMOSE/ISC and is accepted by the recipient with the expressed understanding that the OSE/ISC make no warranties, expressed or implied, concerning the accuracy, completeness, reliability, usability, or suitability for any particular purpose of the data.

Point of Diversion Summary

quarters are 1=NW 2=NE 3=SW 4=SE
quarters are smallest to largest

NAD83 UTM in meters

Well Tag	POD Nbr	Q64	Q16	Q4	Sec	Tws	Rng	X	Y	Map
C 02313	NE	SW	SW	26	25S	33E	636971.0	3552098.0 *		

* UTM location was derived from PLSS - see Help

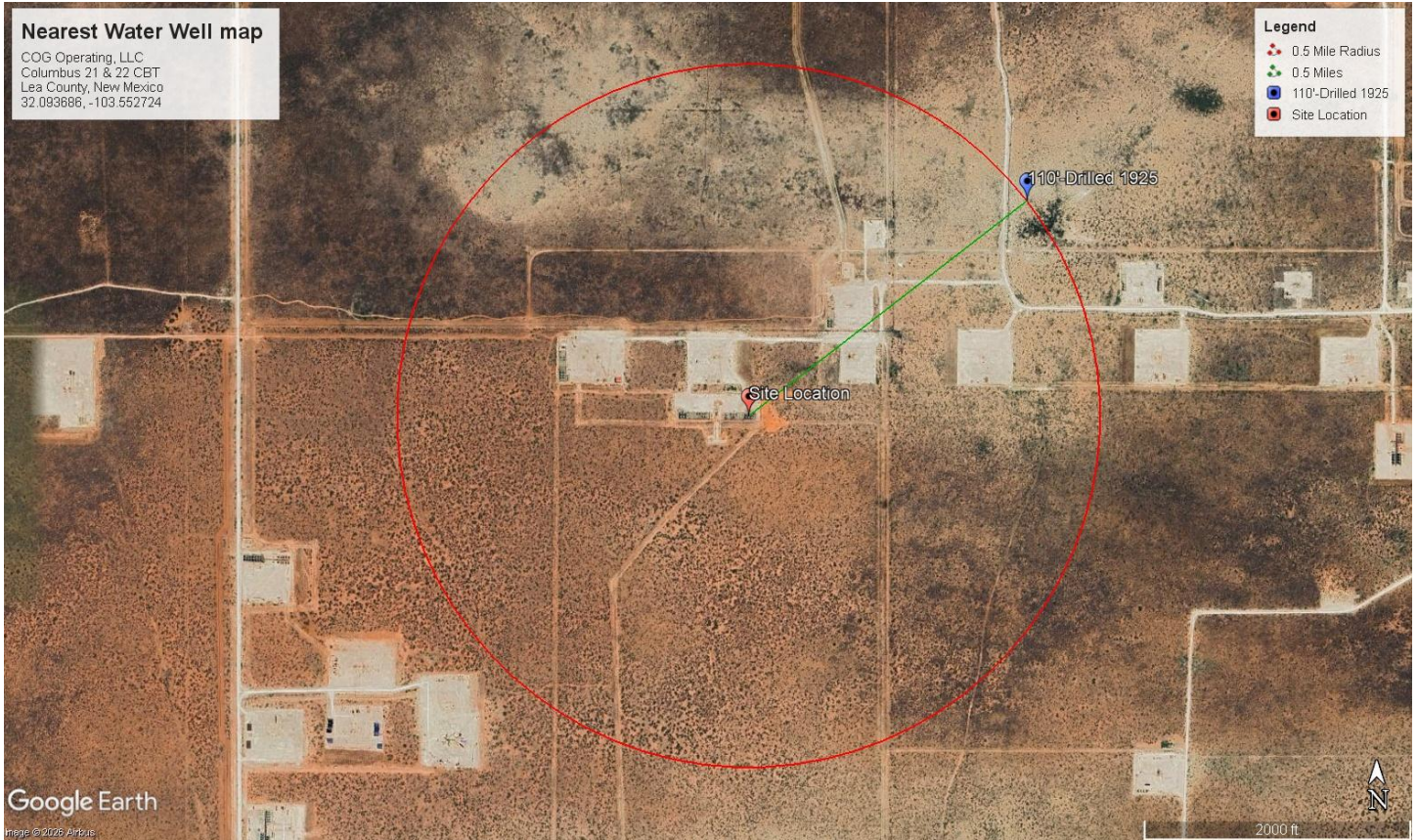
Driller License:	Driller Company:		
Driller Name:	UNKNOWN		
Drill Start Date:	1925-01-01	Drill Finish Date:	1925-06-30
Plug Date:			
Log File Date:	PCW Rcv Date:	Source:	
Pump Type:	Pipe Discharge Size:	Estimated Yield:	60
Casing Size:	6.88	Depth Well:	150
		Depth Water:	110

The data is furnished by the NMOSE/ISC and is accepted by the recipient with the expressed understanding that the OSE/ISC make no warranties, expressed or implied, concerning the accuracy, completeness, reliability, usability, or suitability for any particular purpose of the data.

1/28/26 10:41 AM MST

Point of Diversion Summary

©2024 New Mexico Office of the State Engineer, All Rights Reserved. | [Disclaimer](#) | [Contact Us](#) | [Help](#) | [Home](#) |



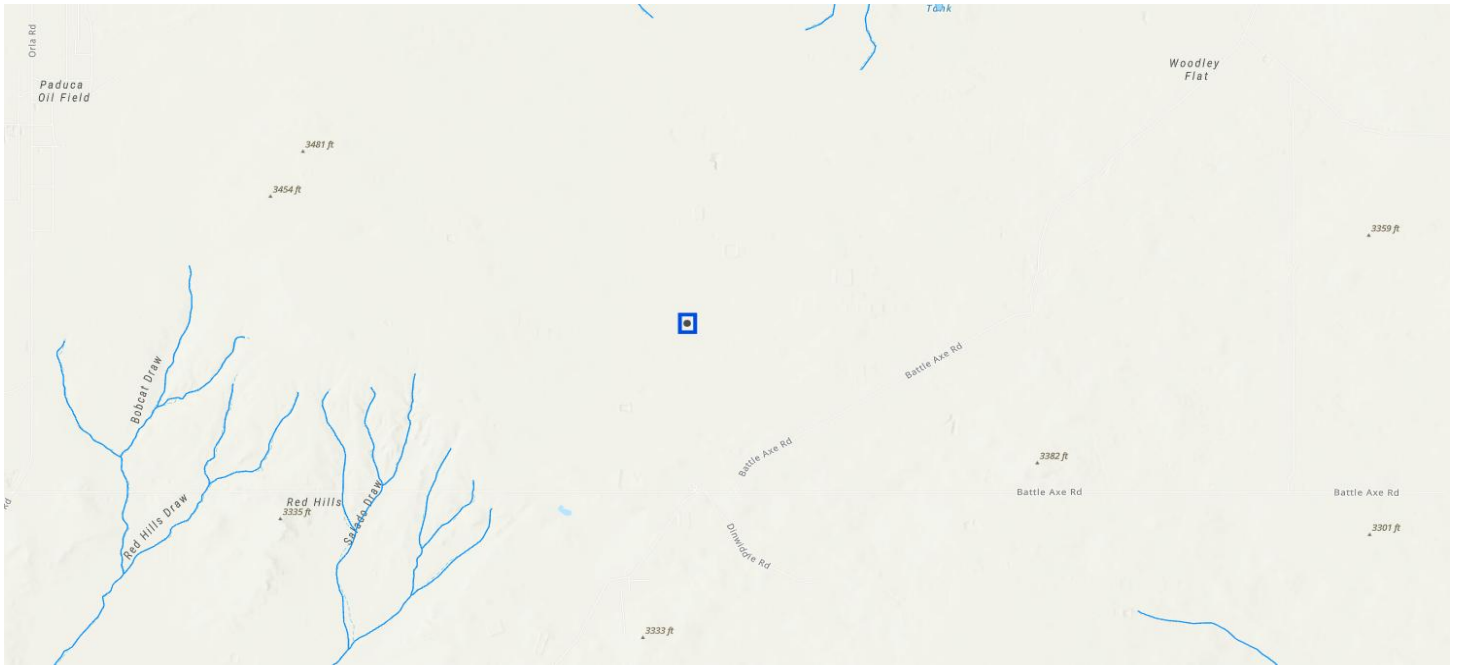
Neatest Water Well Map

COG Operating, LLC
Columbus Fed 21 & 22 CTB
Lea County, New Mexico
32.093686, -103.552724



Karst Map

COG Operating, LLC
Columbus Fed 21 & 22 CTB
Lea County, New Mexico
32.093686, -103.552724



Hydrology Map

COG Operating, LLC
Columbus Fed 21 & 22 CTB
Lea County, New Mexico
32.093686, -103.552724

Sante Fe Main Office
Phone: (505) 476-3441

General Information
Phone: (505) 629-6116

Online Phone Directory
<https://www.emnrd.nm.gov/ocd/contact-us>

State of New Mexico
Energy, Minerals and Natural Resources
Oil Conservation Division
1220 S. St Francis Dr.
Santa Fe, NM 87505

QUESTIONS

Action 559207

QUESTIONS

Operator: COG OPERATING LLC 600 W Illinois Ave Midland, TX 79701	OGRID: 229137
	Action Number: 559207
	Action Type: [C-141] Remediation Closure Request C-141 (C-141-v-Closure)

QUESTIONS

Prerequisites	
Incident ID (n#)	nAPP2602458199
Incident Name	NAPP2602458199 COLUMBUS 21 & 22H CTB @ FAPP2203353035
Incident Type	Release Other
Incident Status	Remediation Closure Report Received
Incident Facility	[fAPP2203353035] Columbus Fed 21&22H CTB - Battery

Location of Release Source	
<i>Please answer all the questions in this group.</i>	
Site Name	Columbus 21 & 22H CTB
Date Release Discovered	01/24/2026
Surface Owner	Private

Incident Details	
<i>Please answer all the questions in this group.</i>	
Incident Type	Release Other
Did this release result in a fire or is the result of a fire	No
Did this release result in any injuries	No
Has this release reached or does it have a reasonable probability of reaching a watercourse	No
Has this release endangered or does it have a reasonable probability of endangering public health	No
Has this release substantially damaged or will it substantially damage property or the environment	No
Is this release of a volume that is or may with reasonable probability be detrimental to fresh water	No

Nature and Volume of Release	
<i>Material(s) released, please answer all that apply below. Any calculations or specific justifications for the volumes provided should be attached to the follow-up C-141 submission.</i>	
Crude Oil Released (bbls) Details	Cause: Freeze Pipeline (Any) Crude Oil Released: 10 BBL Recovered: 10 BBL Lost: 0 BBL.
Produced Water Released (bbls) Details	Cause: Freeze Pipeline (Any) Produced Water Released: 590 BBL Recovered: 589 BBL Lost: 1 BBL.
Is the concentration of chloride in the produced water >10,000 mg/l	Yes
Condensate Released (bbls) Details	Not answered.
Natural Gas Vented (Mcf) Details	Not answered.
Natural Gas Flared (Mcf) Details	Not answered.
Other Released Details	Not answered.
Are there additional details for the questions above (i.e. any answer containing Other, Specify, Unknown, and/or Fire, or any negative lost amounts)	Not answered.

Sante Fe Main Office
Phone: (505) 476-3441

General Information
Phone: (505) 629-6116

Online Phone Directory
<https://www.emnrd.nm.gov/ocd/contact-us>

State of New Mexico
Energy, Minerals and Natural Resources
Oil Conservation Division
1220 S. St Francis Dr.
Santa Fe, NM 87505

QUESTIONS, Page 2

Action 559207

QUESTIONS (continued)

Operator: COG OPERATING LLC 600 W Illinois Ave Midland, TX 79701	OGRID: 229137
	Action Number: 559207
	Action Type: [C-141] Remediation Closure Request C-141 (C-141-v-Closure)

QUESTIONS

Nature and Volume of Release (continued)	
Is this a gas only submission (i.e. only significant Mcf values reported)	No, according to supplied volumes this does not appear to be a "gas only" report.
Was this a major release as defined by Subsection A of 19.15.29.7 NMAC	Yes
Reasons why this would be considered a submission for a notification of a major release	From paragraph A. "Major release" determine using: (1) an unauthorized release of a volume, excluding gases, of 25 barrels or more.
<i>With the implementation of the 19.15.27 NMAC (05/25/2021), venting and/or flaring of natural gas (i.e. gas only) are to be submitted on the C-129 form.</i>	

Initial Response

The responsible party must undertake the following actions immediately unless they could create a safety hazard that would result in injury.

The source of the release has been stopped	True
The impacted area has been secured to protect human health and the environment	True
Released materials have been contained via the use of berms or dikes, absorbent pads, or other containment devices	True
All free liquids and recoverable materials have been removed and managed appropriately	True
If all the actions described above have not been undertaken, explain why	Not answered.

Per Paragraph (4) of Subsection B of 19.15.29.8 NMAC the responsible party may commence remediation immediately after discovery of a release. If remediation has begun, please prepare and attach a narrative of actions to date in the follow-up C-141 submission. If remedial efforts have been successfully completed or if the release occurred within a lined containment area (see Subparagraph (a) of Paragraph (5) of Subsection A of 19.15.29.11 NMAC), please prepare and attach all information needed for closure evaluation in the follow-up C-141 submission.

I hereby certify that the information given above is true and complete to the best of my knowledge and understand that pursuant to OCD rules and regulations all operators are required to report and/or file certain release notifications and perform corrective actions for releases which may endanger public health or the environment. The acceptance of a C-141 report by the OCD does not relieve the operator of liability should their operations have failed to adequately investigate and remediate contamination that pose a threat to groundwater, surface water, human health or the environment. In addition, OCD acceptance of a C-141 report does not relieve the operator of responsibility for compliance with any other federal, state, or local laws and/or regulations.

I hereby agree and sign off to the above statement	Name: Jacob Laird Title: Environmental Engineer Email: jacob.laird@conocophillips.com Date: 03/03/2026
----------------------------------------------------	-----------------------------------------------------------------------------------------------------------------

Sante Fe Main Office
Phone: (505) 476-3441

General Information
Phone: (505) 629-6116

Online Phone Directory
<https://www.emnrd.nm.gov/ocd/contact-us>

State of New Mexico
Energy, Minerals and Natural Resources
Oil Conservation Division
1220 S. St Francis Dr.
Santa Fe, NM 87505

QUESTIONS, Page 3

Action 559207

QUESTIONS (continued)

Operator: COG OPERATING LLC 600 W Illinois Ave Midland, TX 79701	OGRID: 229137
	Action Number: 559207
	Action Type: [C-141] Remediation Closure Request C-141 (C-141-v-Closure)

QUESTIONS

Site Characterization

Please answer all the questions in this group (only required when seeking remediation plan approval and beyond). This information must be provided to the appropriate district office no later than 90 days after the release discovery date.

What is the shallowest depth to groundwater beneath the area affected by the release in feet below ground surface (ft bgs)	Between 100 and 500 (ft.)
What method was used to determine the depth to ground water	NM OSE iWaters Database Search
Did this release impact groundwater or surface water	No
What is the minimum distance, between the closest lateral extents of the release and the following surface areas:	
A continuously flowing watercourse or any other significant watercourse	Between 1 and 5 (mi.)
Any lakebed, sinkhole, or playa lake (measured from the ordinary high-water mark)	Between 1 and 5 (mi.)
An occupied permanent residence, school, hospital, institution, or church	Greater than 5 (mi.)
A spring or a private domestic fresh water well used by less than five households for domestic or stock watering purposes	Between 500 and 1000 (ft.)
Any other fresh water well or spring	Between 500 and 1000 (ft.)
Incorporated municipal boundaries or a defined municipal fresh water well field	Greater than 5 (mi.)
A wetland	Between ½ and 1 (mi.)
A subsurface mine	Greater than 5 (mi.)
An (non-karst) unstable area	Greater than 5 (mi.)
Categorize the risk of this well / site being in a karst geology	Low
A 100-year floodplain	Between ½ and 1 (mi.)
Did the release impact areas not on an exploration, development, production, or storage site	No

Remediation Plan

Please answer all the questions that apply or are indicated. This information must be provided to the appropriate district office no later than 90 days after the release discovery date.

Requesting a remediation plan approval with this submission	Yes
<i>Attach a comprehensive report demonstrating the lateral and vertical extents of soil contamination associated with the release have been determined, pursuant to 19.15.29.11 NMAC and 19.15.29.13 NMAC.</i>	
Have the lateral and vertical extents of contamination been fully delineated	Yes
Was this release entirely contained within a lined containment area	Yes
<i>Per Subsection B of 19.15.29.11 NMAC unless the site characterization report includes completed efforts at remediation, the report must include a proposed remediation plan in accordance with 19.15.29.12 NMAC, which includes the anticipated timelines for beginning and completing the remediation.</i>	
On what estimated date will the remediation commence	02/26/2026
On what date will (or did) the final sampling or liner inspection occur	02/26/2026
On what date will (or was) the remediation complete(d)	02/26/2026
What is the estimated surface area (in square feet) that will be remediated	5952
What is the estimated volume (in cubic yards) that will be remediated	0

These estimated dates and measurements are recognized to be the best guess or calculation at the time of submission and may (be) change(d) over time as more remediation efforts are completed. The OCD recognizes that proposed remediation measures may have to be minimally adjusted in accordance with the physical realities encountered during remediation. If the responsible party has any need to significantly deviate from the remediation plan proposed, then it should consult with the division to determine if another remediation plan submission is required.

Sante Fe Main Office
Phone: (505) 476-3441

General Information
Phone: (505) 629-6116

Online Phone Directory
<https://www.emnrd.nm.gov/ocd/contact-us>

**State of New Mexico
Energy, Minerals and Natural Resources
Oil Conservation Division
1220 S. St Francis Dr.
Santa Fe, NM 87505**

QUESTIONS, Page 4

Action 559207

QUESTIONS (continued)

Operator: COG OPERATING LLC 600 W Illinois Ave Midland, TX 79701	OGRID: 229137
	Action Number: 559207
	Action Type: [C-141] Remediation Closure Request C-141 (C-141-v-Closure)

QUESTIONS

Remediation Plan (continued)	
<i>Please answer all the questions that apply or are indicated. This information must be provided to the appropriate district office no later than 90 days after the release discovery date.</i>	
This remediation will (or is expected to) utilize the following processes to remediate / reduce contaminants:	
<i>(Select all answers below that apply.)</i>	
Is (or was) there affected material present needing to be removed	Yes
Is (or was) there a power wash of the lined containment area (to be) performed	Yes
OTHER (Non-listed remedial process)	Not answered.
<i>Per Subsection B of 19.15.29.11 NMAC unless the site characterization report includes completed efforts at remediation, the report must include a proposed remediation plan in accordance with 19.15.29.12 NMAC, which includes the anticipated timelines for beginning and completing the remediation.</i>	
I hereby certify that the information given above is true and complete to the best of my knowledge and understand that pursuant to OCD rules and regulations all operators are required to report and/or file certain release notifications and perform corrective actions for releases which may endanger public health or the environment. The acceptance of a C-141 report by the OCD does not relieve the operator of liability should their operations have failed to adequately investigate and remediate contamination that pose a threat to groundwater, surface water, human health or the environment. In addition, OCD acceptance of a C-141 report does not relieve the operator of responsibility for compliance with any other federal, state, or local laws and/or regulations.	
I hereby agree and sign off to the above statement	Name: Jacob Laird Title: Environmental Engineer Email: jacob.laird@conocophillips.com Date: 03/03/2026
<i>The OCD recognizes that proposed remediation measures may have to be minimally adjusted in accordance with the physical realities encountered during remediation. If the responsible party has any need to significantly deviate from the remediation plan proposed, then it should consult with the division to determine if another remediation plan submission is required.</i>	

Sante Fe Main Office
Phone: (505) 476-3441

General Information
Phone: (505) 629-6116

Online Phone Directory
<https://www.emnrd.nm.gov/ocd/contact-us>

State of New Mexico
Energy, Minerals and Natural Resources
Oil Conservation Division
1220 S. St Francis Dr.
Santa Fe, NM 87505

QUESTIONS, Page 6

Action 559207

QUESTIONS (continued)

Operator: COG OPERATING LLC 600 W Illinois Ave Midland, TX 79701	OGRID: 229137
	Action Number: 559207
	Action Type: [C-141] Remediation Closure Request C-141 (C-141-v-Closure)

QUESTIONS

Liner Inspection Information	
Last liner inspection notification (C-141L) recorded	556753
Liner inspection date pursuant to Subparagraph (a) of Paragraph (5) of Subsection A of 19.15.29.11 NMAC	02/26/2026
Was all the impacted materials removed from the liner	Yes
What was the liner inspection surface area in square feet	5952

Remediation Closure Request	
<i>Only answer the questions in this group if seeking remediation closure for this release because all remediation steps have been completed.</i>	
Requesting a remediation closure approval with this submission	Yes
Have the lateral and vertical extents of contamination been fully delineated	Yes
Was this release entirely contained within a lined containment area	Yes
What was the total surface area (in square feet) remediated	5952
What was the total volume (cubic yards) remediated	0
Summarize any additional remediation activities not included by answers (above)	Liner integrity inspection activities were conducted following a release of oil and produced water within a lined containment at the Site. Upon inspection, no rips, tears, holes, or damage was observed, and the liner was determined to be sufficient. The release was contained laterally by the lined containment and the liner was performing as designed.

The responsible party must attach information demonstrating they have complied with all applicable closure requirements and any conditions or directives of the OCD. This demonstration should be in the form of a comprehensive report (in .pdf format) including a scaled site map, sampling diagrams, relevant field notes, photographs of any excavation prior to backfilling, laboratory data including chain of custody documents of final sampling, and a narrative of the remedial activities. Refer to 19.15.29.12 NMAC.

I hereby certify that the information given above is true and complete to the best of my knowledge and understand that pursuant to OCD rules and regulations all operators are required to report and/or file certain release notifications and perform corrective actions for releases which may endanger public health or the environment. The acceptance of a C-141 report by the OCD does not relieve the operator of liability should their operations have failed to adequately investigate and remediate contamination that pose a threat to groundwater, surface water, human health or the environment. In addition, OCD acceptance of a C-141 report does not relieve the operator of responsibility for compliance with any other federal, state, or local laws and/or regulations. The responsible party acknowledges they must substantially restore, reclaim, and re-vegetate the impacted surface area to the conditions that existed prior to the release or their final land use in accordance with 19.15.29.13 NMAC including notification to the OCD when reclamation and re-vegetation are complete.

I hereby agree and sign off to the above statement	Name: Jacob Laird Title: Environmental Engineer Email: jacob.laird@conocophillips.com Date: 03/03/2026
----------------------------------------------------	-----------------------------------------------------------------------------------------------------------------

Sante Fe Main Office
Phone: (505) 476-3441

General Information
Phone: (505) 629-6116

Online Phone Directory
<https://www.emnrd.nm.gov/ocd/contact-us>

State of New Mexico
Energy, Minerals and Natural Resources
Oil Conservation Division
1220 S. St Francis Dr.
Santa Fe, NM 87505

CONDITIONS

Action 559207

CONDITIONS

Operator: COG OPERATING LLC 600 W Illinois Ave Midland, TX 79701	OGRID: 229137
	Action Number: 559207
	Action Type: [C-141] Remediation Closure Request C-141 (C-141-v-Closure)

CONDITIONS

Created By	Condition	Condition Date
scott.rodgers	App ID 559207 Liner Inspection approved	3/11/2026