



**SITE INFORMATION**

---

**Closure Report**

**Sea Snake 35 State #004H (12.08.2025)**

**Incident ID: nAPP2534534495**

**Lea County, New Mexico**

**Unit P, Sec 35, T23S, R33E**

**32.25485154, -103.53725422**

**Crude Oil and Produced Water Release**

**Point of Release: Stuffing Box Leak**

**Release Date: 12.08.2025**

**Volume Released: 20 Barrels of Crude Oil and 6 Barrels of Produced Water**

**Volume Recovered: 10 Barrels of Crude Oil and 0 Barrels of Produced Water**

**CARMONA RESOURCES**



**Prepared for:**

**Devon Energy**

**5315 Buena Vista Dr.**

**Carlsbad, New Mexico 88220**

**Prepared by:**

**Carmona Resources, LLC**

**310 West Wall Street**

**Suite 500**

**Midland, Texas 79701**





January 22, 2026

New Mexico Oil Conservation District  
1220 South St, France Drive  
Santa Fe, NM 87505

Re: **Closure Report**  
**Sea Snake 35 State #004H (12.08.2025)**  
**Incident ID: nAPP2534534495**  
**Devon Energy**  
**Site Location: Unit P, S35, T23S, R33E**  
**32.25485154, -103.53725422**  
**Lea County, New Mexico**

To whom it may concern:

At the request of Devon Energy (Devon) Carmona Resources LLC, has prepared this letter to document the site remediation conducted at the Sea Snake 35 State #004H, located at 32.25485154, -103.53725422 within Unit P, S35, T23S, R33E, in Lea County, New Mexico (Figures 1 and 2).

### **1.0 Site Information and Background**

Based on the initial C-141 obtained from the New Mexico Oil Conservation Division (NMOCD), the release was discovered on December 8, 2025, due to a stuffing box leaking resulted in a spill on pad. The incident resulted in the release of approximately twenty (20) barrels of crude oil and six (6) barrels of produced water, with ten (10) barrels of crude oil and zero (0) barrels of produced water recovered. The release area is approximately 1,983 square feet and remained entirely on pad. The spill boundaries are shown in Figure 3. The initial C-141 form is attached in Appendix C.

### **2.0 Site Characterization and Groundwater**

The site is located within a low karst area. Based on a review of the New Mexico Office of State Engineers and USGS databases, there are no known water sources within a 0.50-mile radius of the location. The nearest groundwater determination bore (GWDB) is located approximately 0.44 miles West of the site in Unit N, S35, T23S, 33E, and was drilled in 2023. The GWDB was drilled to a depth of 55' feet below ground surface (ft bgs). A copy of the summary report is attached in Appendix D. The closest pond is approximately 2,100 feet to the southwest of this location.

### **3.0 NMAC Regulatory Criteria**

Per the NMOCD regulatory criteria established in 19.15.29.12 NMAC, the following criteria were utilized in assessing and remediating the site.

- Benzene: 10 milligrams per kilogram (mg/kg).
- Benzene, toluene, ethylbenzene, and total xylenes (BTEX): 50 mg/kg.
- TPH: 1,000 mg/kg (GRO + DRO).
- TPH: 2,500 mg/kg (GRO + DRO + MRO).
- Chloride: 10,000 mg/kg.



#### **4.0 Remediation Activities**

On January 7, 2025, Carmona Resources personnel were onsite to supervise the remediation activities, collect confirmation samples, and document backfill activities. Before collecting composite confirmation samples, the NMOCD division office was notified via NMOCD portal on December 5, 2025, per Subsection D of 19.15.29.12 NMAC, see Appendix C. The area was excavated to a depth of 0.5 ft bgs. A total of six (6) horizontal samples (H-1 through H-6) were collected for horizontal delineation, and eleven (11) confirmation floor samples (CS-1 through CS-11) were collected every 200 square feet to ensure the proper removal of contaminated soil. Composite confirmation sidewall samples were not collected due to the excavation depth not exceeding 0.5' ft bgs. For chemical analysis, the soil samples were collected and placed into laboratory-provided sample containers, stored on ice, and transported under the proper chain-of-custody protocol to Eurofins Laboratories in Midland, Texas in accordance with established chain-of-custody protocols. All collected samples were analyzed for TPH analysis by EPA method 8015 modified, BTEX by EPA method 8021B, and Chloride by EPA method 300. Copies of laboratory analysis and chain-of-custody documentation are included in Appendix E.

All final confirmation samples were below the regulatory requirements for TPH, BTEX, and Chlorides. Refer to Table 1. The excavation depths and confirmation sample locations are shown in Figure 3.

On January 15, once the remediation activities were completed, the excavated areas were backfilled with clean material to surface grade. A composite sample from the Halo Backfill Pit, located at 32.325776, -103.832943. Approximately 37 cubic yards of material were excavated and transported offsite for proper disposal. See Table 1 & Appendix E for laboratory analysis of the backfill sample

#### **5.0 Conclusion**

Based on the assessment and analytical data from the remediation, no further actions are required at the site. Devon formally requests the closure of the spill. If you have any questions regarding this report or need additional information, please contact us at 432-813-8988.

Sincerely,

**Carmona Resources, LLC**

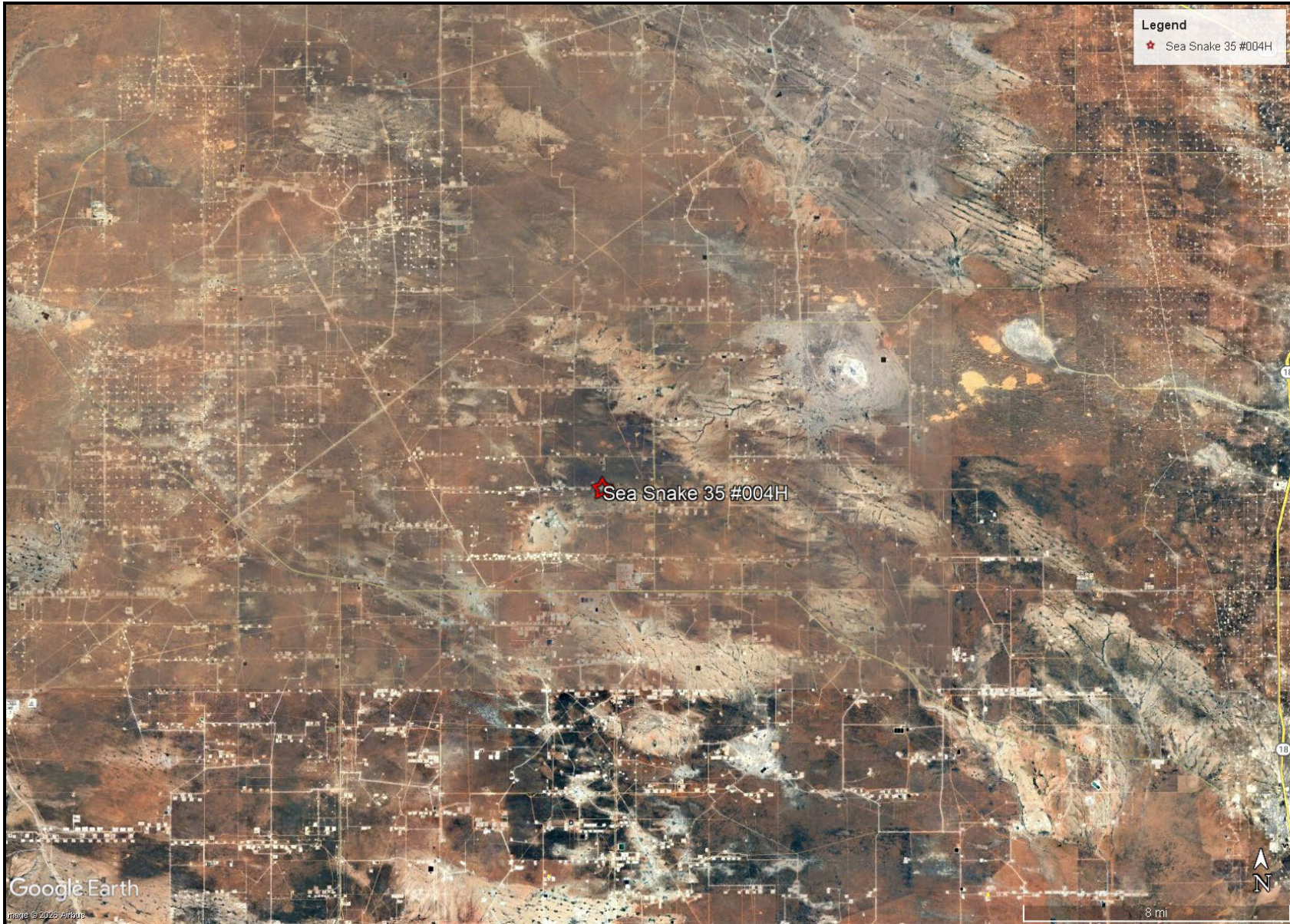
Ashton Thielke  
Director of Operations

Riley Plogger  
Project Manager

# FIGURES

CARMONA RESOURCES



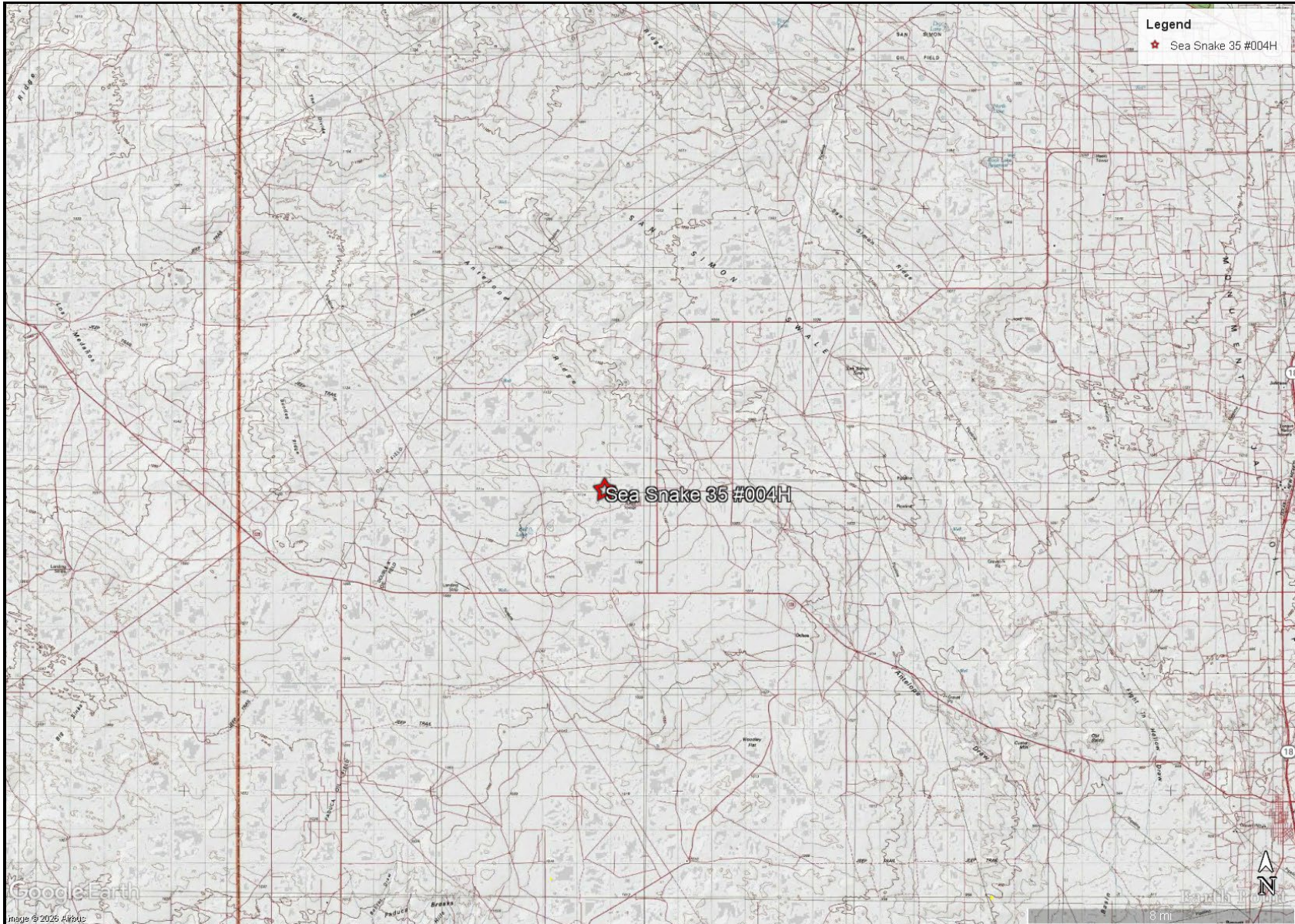


OVERVIEW MAP  
DEVON ENERGY  
SEA SNAKE 35 #004H  
LEA COUNTY, NEW MEXICO  
32.25485154, -103.53725422

CARMONA RESOURCES



FIGURE 1



TOPOGRAPHIC MAP  
DEVON ENERGY  
SEA SNAKE 35 #004H  
LEA COUNTY, NEW MEXICO  
32.25485154, -103.53725422

CARMONA RESOURCES



FIGURE 2



EXCAVATION DEPTH MAP  
DEVON ENERGY  
SEA SNAKE 35 #004H  
LEA COUNTY, NEW MEXICO  
32.25485154, -103.53725422



FIGURE 3

# APPENDIX A

CARMONA RESOURCES



**Table 1  
Devon Energy  
Sea Snake 35 #004H (12.08.2025)  
Lea County, New Mexico**

Sample ID	Date	Depth (ft)	TPH (mg/kg)				Benzene (mg/kg)	Toluene (mg/kg)	Ethlybenzene (mg/kg)	Xylene (mg/kg)	Total BTEX (mg/kg)	Chloride (mg/kg)
			GRO	DRO	MRO	Total						
<b>CS-1</b>	1/7/2026	0.5'	<49.9	536	127	663	<0.00200	<0.00200	<0.00200	<0.00200	<0.00399	754
<b>CS-2</b>	1/7/2026	0.5'	<50.0	269	<50.0	269	<0.00201	<0.00201	<0.00201	<0.00201	<0.00402	732
<b>CS-3</b>	1/7/2026	0.5'	<49.9	221	<49.9	221	<0.00202	<0.00202	<0.00202	<0.00202	<0.00404	696
<b>CS-4</b>	1/7/2026	0.5'	<49.9	248	<49.9	248	<0.00199	<0.00199	<0.00199	<0.00199	<0.00398	779
<b>CS-5</b>	1/7/2026	0.5'	<50.0	209	<50.0	209	<0.00199	<0.00199	<0.00199	<0.00199	<0.00398	807
<b>CS-6</b>	1/7/2026	0.5'	<49.8	239	50.3	289	<0.00200	<0.00200	<0.00200	<0.00200	<0.00399	688
<b>CS-7</b>	1/7/2026	0.5'	<49.9	184	<49.9	184	<0.00198	<0.00198	<0.00198	<0.00198	<0.00396	184
<b>CS-8</b>	1/7/2026	0.5'	<50.0	136	<50.0	136	<0.00201	<0.00201	<0.00201	<0.00201	<0.00402	632
<b>CS-9</b>	1/7/2026	0.5'	<49.9	195	<49.9	195	<0.00202	<0.00202	<0.00202	<0.00202	<0.00403	639
<b>CS-10</b>	1/7/2026	0.5'	<49.8	118	<49.8	118	<0.00199	<0.00199	<0.00199	<0.00199	<0.00398	659
<b>CS-11</b>	1/7/2026	0.5'	<49.9	256	<49.9	256	<0.00200	<0.00200	<0.00200	<0.00200	<0.00399	700
<b>Halo Pit Backfill</b>	1/15/2026	-	<10.0	<10.0	<10.0	<10.0	<0.050	<0.050	<0.050	<0.150	<0.300	32
<b>Regulatory Criteria<sup>A</sup></b>			<b>1,000 mg/kg</b>		<b>2,500 mg/kg</b>		<b>10 mg/kg</b>				<b>50 mg/kg</b>	<b>10,000 mg/kg</b>

<sup>A</sup> - Table 1 - 19.15.29 NMAC  
 mg/kg - milligram per kilogram  
 TPH - Total Petroleum Hydrocarbons  
 ft - feet  
 (CS) - Confirmation Sample

**Table 1  
Devon Energy  
Sea Snake 35 #004H (12.08.2025)  
Lea County, New Mexico**

Sample ID	Date	Depth (ft)	TPH (mg/kg)				Benzene (mg/kg)	Toluene (mg/kg)	Ethlybenzene (mg/kg)	Xylene (mg/kg)	Total BTEX (mg/kg)	Chloride (mg/kg)
			GRO	DRO	MRO	Total						
H-1	1/15/2026	0-0.5'	<10.0	<10.0	<10.0	<10.0	<0.050	<0.050	<0.050	<0.150	<0.300	64.0
H-2	1/15/2026	0-0.5'	<10.0	<10.0	<10.0	<10.0	<0.050	<0.050	<0.050	<0.150	<0.300	144
H-3	1/15/2026	0-0.5'	<10.0	<10.0	<10.0	<10.0	<0.050	<0.050	<0.050	<0.150	<0.300	128
H-4	1/15/2026	0-0.5'	<10.0	<10.0	<10.0	<10.0	<0.050	<0.050	<0.050	<0.150	<0.300	64.0
H-5	1/15/2026	0-0.5'	<10.0	<10.0	<10.0	<10.0	<0.050	<0.050	<0.050	<0.150	<0.300	112
H-6	1/15/2026	0-0.5'	<10.0	<10.0	<10.0	<10.0	<0.050	<0.050	<0.050	<0.150	<0.300	64.0
<b>Regulatory Criteria<sup>A</sup></b>			<b>1,000 mg/kg</b>			<b>2,500 mg/kg</b>		<b>10 mg/kg</b>		<b>50 mg/kg</b>		<b>10,000 mg/kg</b>

<sup>A</sup> – Table 1 - 19.15.29 NMAC  
 mg/kg - milligram per kilogram  
 TPH - Total Petroleum Hydrocarbons  
 ft - feet  
 (H) - Horizontal Sample

## APPENDIX B

CARMONA RESOURCES



# PHOTOGRAPHIC LOG

## Devon Energy

### Photograph No. 1

**Facility:** Sea Snake 35 State #004H

**County:** Lea County, New Mexico

**Description:**  
View South, Area of concern following the release.

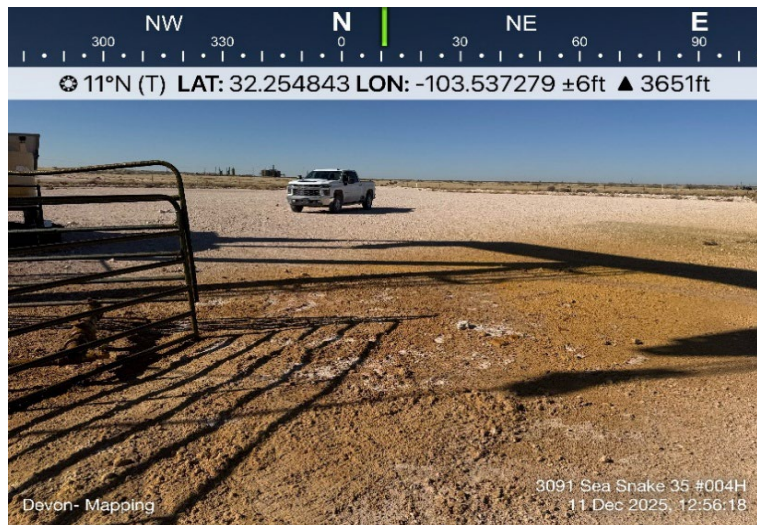


### Photograph No. 2

**Facility:** Sea Snake 35 State #004H

**County:** Lea County, New Mexico

**Description:**  
View North, Area of concern following the release.



### Photograph No. 3

**Facility:** Sea Snake 35 State #004H

**County:** Lea County, New Mexico

**Description:**  
View North, Area of concern following the release.



# PHOTOGRAPHIC LOG

## Devon Energy

### Photograph No. 4

**Facility:** Sea Snake 35 State #004H

**County:** Lea County, New Mexico

**Description:**

View North, Area of CS-1 through CS-11 following a surface scrape.



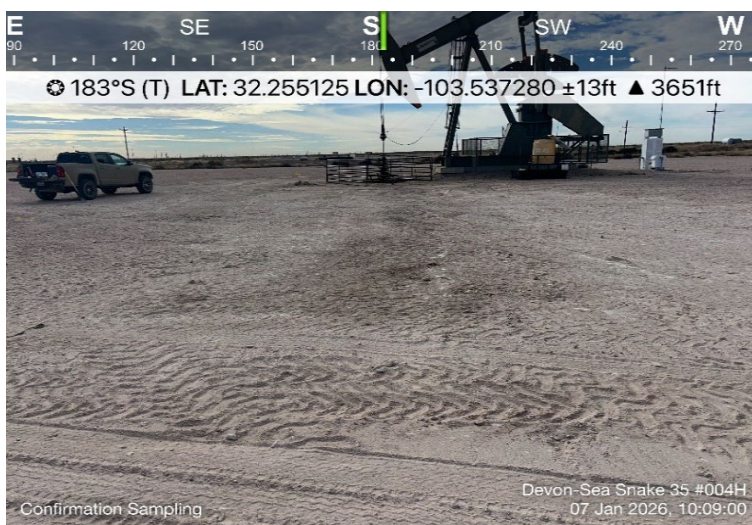
### Photograph No. 5

**Facility:** Sea Snake 35 State #004H

**County:** Lea County, New Mexico

**Description:**

View South, Area of CS-1 through CS-11 following a surface scrape.



### Photograph No. 6

**Facility:** Sea Snake 35 State #004H

**County:** Lea County, New Mexico

**Description:**

View East, Area of CS-1 through CS-11 following a surface scrape.



## APPENDIX C

CARMONA RESOURCES



Sante Fe Main Office  
Phone: (505) 476-3441

General Information  
Phone: (505) 629-6116

Online Phone Directory  
<https://www.emnrd.nm.gov/ocd/contact-us>

**State of New Mexico**  
**Energy, Minerals and Natural Resources**  
**Oil Conservation Division**  
**1220 S. St Francis Dr.**  
**Santa Fe, NM 87505**

QUESTIONS

Action 533976

**QUESTIONS**

Operator: DEVON ENERGY PRODUCTION COMPANY, LP 333 West Sheridan Ave. Oklahoma City, OK 73102	OGRID: 6137
	Action Number: 533976
	Action Type: [NOTIFY] Notification Of Release (NOR)

**QUESTIONS**

<b>Location of Release Source</b>	
<i>Please answer all the questions in this group.</i>	
Site Name	SEA SNAKE 35 STATE #004H
Date Release Discovered	12/08/2025
Surface Owner	State

<b>Incident Details</b>	
<i>Please answer all the questions in this group.</i>	
Incident Type	Oil Release
Did this release result in a fire or is the result of a fire	No
Did this release result in any injuries	No
Has this release reached or does it have a reasonable probability of reaching a watercourse	No
Has this release endangered or does it have a reasonable probability of endangering public health	No
Has this release substantially damaged or will it substantially damage property or the environment	No
Is this release of a volume that is or may with reasonable probability be detrimental to fresh water	No

<b>Nature and Volume of Release</b>	
<i>Material(s) released, please answer all that apply below. Any calculations or specific justifications for the volumes provided should be attached to the follow-up C-141 submission.</i>	
Crude Oil Released (bbls) Details	Cause: Equipment Failure   Well   Crude Oil   Released: 20 BBL   Recovered: 10 BBL   Lost: 10 BBL.
Produced Water Released (bbls) Details	Cause: Equipment Failure   Well   Produced Water   Released: 6 BBL   Recovered: 0 BBL   Lost: 6 BBL.
Is the concentration of chloride in the produced water >10,000 mg/l	Yes
Condensate Released (bbls) Details	Not answered.
Natural Gas Vented (Mcf) Details	Not answered.
Natural Gas Flared (Mcf) Details	Not answered.
Other Released Details	Not answered.
Are there additional details for the questions above (i.e. any answer containing Other, Specify, Unknown, and/or Fire, or any negative lost amounts)	Stuffing box leak allowed fluids to impact pad surface. Major notification sent via email to (R. Romero, M. Bratcher)

Sante Fe Main Office  
Phone: (505) 476-3441

General Information  
Phone: (505) 629-6116

Online Phone Directory  
<https://www.emnrd.nm.gov/ocd/contact-us>

**State of New Mexico**  
**Energy, Minerals and Natural Resources**  
**Oil Conservation Division**  
**1220 S. St Francis Dr.**  
**Santa Fe, NM 87505**

QUESTIONS, Page 2

Action 533976

**QUESTIONS (continued)**

Operator: DEVON ENERGY PRODUCTION COMPANY, LP 333 West Sheridan Ave. Oklahoma City, OK 73102	OGRID: 6137
	Action Number: 533976
	Action Type: [NOTIFY] Notification Of Release (NOR)

**QUESTIONS**

<b>Nature and Volume of Release (continued)</b>	
Is this a gas only submission (i.e. only significant Mcf values reported)	<b>No, according to supplied volumes this does not appear to be a "gas only" report.</b>
Was this a major release as defined by Subsection A of 19.15.29.7 NMAC	<b>Yes</b>
Reasons why this would be considered a submission for a notification of a major release	<b>From paragraph A. "Major release" determine using: (1) an unauthorized release of a volume, excluding gases, of 25 barrels or more.</b>
<i>With the implementation of the 19.15.27 NMAC (05/25/2021), venting and/or flaring of natural gas (i.e. gas only) are to be submitted on the C-129 form.</i>	

**Initial Response**

*The responsible party must undertake the following actions immediately unless they could create a safety hazard that would result in injury.*

The source of the release has been stopped	True
The impacted area has been secured to protect human health and the environment	True
Released materials have been contained via the use of berms or dikes, absorbent pads, or other containment devices	True
All free liquids and recoverable materials have been removed and managed appropriately	True
If all the actions described above have not been undertaken, explain why	Not answered.

*Per Paragraph 4 of Subsection B of 19.15.29.8 NMAC the responsible party may commence remediation immediately after discovery of a release. If remediation has begun, please prepare and attach a narrative of actions to date in the follow-up C-141 submission. If remedial efforts have been successfully completed or if the release occurred within a lined containment area (see 19.15.29.11(A)(5)(a) NMAC), please prepare and attach all information needed for closure evaluation in the follow-up C-141 submission.*

Sante Fe Main Office  
Phone: (505) 476-3441

General Information  
Phone: (505) 629-6116

Online Phone Directory  
<https://www.emnrd.nm.gov/ocd/contact-us>

**State of New Mexico**  
**Energy, Minerals and Natural Resources**  
**Oil Conservation Division**  
**1220 S. St Francis Dr.**  
**Santa Fe, NM 87505**

ACKNOWLEDGMENTS

Action 533976

**ACKNOWLEDGMENTS**

Operator: DEVON ENERGY PRODUCTION COMPANY, LP 333 West Sheridan Ave. Oklahoma City, OK 73102	OGRID: 6137
	Action Number: 533976
	Action Type: [NOTIFY] Notification Of Release (NOR)

**ACKNOWLEDGMENTS**

<input checked="" type="checkbox"/>	I acknowledge that I am authorized to submit notification of a release on behalf of my operator.
<input checked="" type="checkbox"/>	I acknowledge that upon submitting this application, I will be creating a new incident file (assigned to my operator) to track the notification(s) and corrective action(s) for a release, pursuant to NMAC 19.15.29.
<input checked="" type="checkbox"/>	I acknowledge that creating a new incident file will require my operator to file subsequent submission(s) of form "C-141, Application for administrative approval of a release notification and corrective action", pursuant to NMAC 19.15.29.
<input checked="" type="checkbox"/>	I hereby certify that the information given above is true and complete to the best of my knowledge and understand that pursuant to OCD rules and regulations all operators are required to report and/or file certain release notifications and perform corrective actions for releases which may endanger public health or the environment.
<input checked="" type="checkbox"/>	I acknowledge the fact that the acceptance of a C-141 report by the OCD does not relieve the operator of liability should their operations have failed to adequately investigate and remediate contamination that pose a threat to groundwater, surface water, human health or the environment.
<input checked="" type="checkbox"/>	I acknowledge the fact that, in addition, OCD acceptance of a C-141 report does not relieve the operator of responsibility for compliance with any other federal, state, or local laws and/or regulations.

Sante Fe Main Office  
Phone: (505) 476-3441

General Information  
Phone: (505) 629-6116

Online Phone Directory  
<https://www.emnrd.nm.gov/ocd/contact-us>

**State of New Mexico**  
**Energy, Minerals and Natural Resources**  
**Oil Conservation Division**  
**1220 S. St Francis Dr.**  
**Santa Fe, NM 87505**

CONDITIONS

Action 533976

**CONDITIONS**

Operator: DEVON ENERGY PRODUCTION COMPANY, LP 333 West Sheridan Ave. Oklahoma City, OK 73102	OGRID: 6137
	Action Number: 533976
	Action Type: [NOTIFY] Notification Of Release (NOR)

**CONDITIONS**

Created By	Condition	Condition Date
jraley	When submitting future reports regarding this release, please submit the calculations used or specific justification for the volumes reported on the initial C-141.	12/11/2025

### Contaminated Soil Calculations

How do you want to enter area? Total area from app

Area from app (ft<sup>2</sup>) 1782.00

Depth of impacted soil 0.06 in

Soil Type Caliche

Spilled Material Oil / Produced Water

Soil Saturation Wet - hand is wet/muddy after handling

Volume of Spill In Soil 0.50 bbls

Total Spill 26.95 bbls

Sante Fe Main Office  
Phone: (505) 476-3441

General Information  
Phone: (505) 629-6116

Online Phone Directory  
<https://www.emnrd.nm.gov/ocd/contact-us>

**State of New Mexico**  
**Energy, Minerals and Natural Resources**  
**Oil Conservation Division**  
**1220 S. St Francis Dr.**  
**Santa Fe, NM 87505**

QUESTIONS

Action 535973

**QUESTIONS**

Operator: DEVON ENERGY PRODUCTION COMPANY, LP 333 West Sheridan Ave. Oklahoma City, OK 73102	OGRID: 6137
	Action Number: 535973
	Action Type: [C-141] Initial C-141 (C-141-v-Initial)

**QUESTIONS**

<b>Prerequisites</b>	
Incident ID (n#)	nAPP2534534495
Incident Name	NAPP2534534495 SEA SNAKE 35 STATE #004H @ 30-025-42285
Incident Type	Oil Release
Incident Status	Initial C-141 Received
Incident Well	[30-025-42285] SEA SNAKE 35 STATE #004H

<b>Location of Release Source</b>	
<i>Please answer all the questions in this group.</i>	
Site Name	SEA SNAKE 35 STATE #004H
Date Release Discovered	12/08/2025
Surface Owner	State

<b>Incident Details</b>	
<i>Please answer all the questions in this group.</i>	
Incident Type	Oil Release
Did this release result in a fire or is the result of a fire	No
Did this release result in any injuries	No
Has this release reached or does it have a reasonable probability of reaching a watercourse	No
Has this release endangered or does it have a reasonable probability of endangering public health	No
Has this release substantially damaged or will it substantially damage property or the environment	No
Is this release of a volume that is or may with reasonable probability be detrimental to fresh water	No

<b>Nature and Volume of Release</b>	
<i>Material(s) released, please answer all that apply below. Any calculations or specific justifications for the volumes provided should be attached to the follow-up C-141 submission.</i>	
Crude Oil Released (bbls) Details	Cause: Equipment Failure   Well   Crude Oil   Released: 20 BBL   Recovered: 10 BBL   Lost: 10 BBL.
Produced Water Released (bbls) Details	Cause: Equipment Failure   Well   Produced Water   Released: 6 BBL   Recovered: 0 BBL   Lost: 6 BBL.
Is the concentration of chloride in the produced water >10,000 mg/l	Yes
Condensate Released (bbls) Details	Not answered.
Natural Gas Vented (Mcf) Details	Not answered.
Natural Gas Flared (Mcf) Details	Not answered.
Other Released Details	Not answered.
Are there additional details for the questions above (i.e. any answer containing Other, Specify, Unknown, and/or Fire, or any negative lost amounts)	Stuffing box leak allowed fluids to impact pad surface. Major notification sent via email to (R. Romero, M. Bratcher)

Sante Fe Main Office  
Phone: (505) 476-3441

General Information  
Phone: (505) 629-6116

Online Phone Directory  
<https://www.emnrd.nm.gov/ocd/contact-us>

**State of New Mexico  
Energy, Minerals and Natural Resources  
Oil Conservation Division  
1220 S. St Francis Dr.  
Santa Fe, NM 87505**

QUESTIONS, Page 2

Action 535973

**QUESTIONS (continued)**

Operator: DEVON ENERGY PRODUCTION COMPANY, LP 333 West Sheridan Ave. Oklahoma City, OK 73102	OGRID: 6137
	Action Number: 535973
	Action Type: [C-141] Initial C-141 (C-141-v-Initial)

**QUESTIONS**

<b>Nature and Volume of Release (continued)</b>	
Is this a gas only submission (i.e. only significant Mcf values reported)	<b>No, according to supplied volumes this does not appear to be a "gas only" report.</b>
Was this a major release as defined by Subsection A of 19.15.29.7 NMAC	<b>Yes</b>
Reasons why this would be considered a submission for a notification of a major release	<b>From paragraph A. "Major release" determine using: (1) an unauthorized release of a volume, excluding gases, of 25 barrels or more.</b>
<i>With the implementation of the 19.15.27 NMAC (05/25/2021), venting and/or flaring of natural gas (i.e. gas only) are to be submitted on the C-129 form.</i>	

**Initial Response**

*The responsible party must undertake the following actions immediately unless they could create a safety hazard that would result in injury.*

The source of the release has been stopped	True
The impacted area has been secured to protect human health and the environment	True
Released materials have been contained via the use of berms or dikes, absorbent pads, or other containment devices	True
All free liquids and recoverable materials have been removed and managed appropriately	True
If all the actions described above have not been undertaken, explain why	Not answered.

*Per Paragraph (4) of Subsection B of 19.15.29.8 NMAC the responsible party may commence remediation immediately after discovery of a release. If remediation has begun, please prepare and attach a narrative of actions to date in the follow-up C-141 submission. If remedial efforts have been successfully completed or if the release occurred within a lined containment area (see Subparagraph (a) of Paragraph (5) of Subsection A of 19.15.29.11 NMAC), please prepare and attach all information needed for closure evaluation in the follow-up C-141 submission.*

I hereby certify that the information given above is true and complete to the best of my knowledge and understand that pursuant to OCD rules and regulations all operators are required to report and/or file certain release notifications and perform corrective actions for releases which may endanger public health or the environment. The acceptance of a C-141 report by the OCD does not relieve the operator of liability should their operations have failed to adequately investigate and remediate contamination that pose a threat to groundwater, surface water, human health or the environment. In addition, OCD acceptance of a C-141 report does not relieve the operator of responsibility for compliance with any other federal, state, or local laws and/or regulations.

I hereby agree and sign off to the above statement	Name: James Raley Title: EHS Professional Email: jim.raley@dvn.com Date: 12/17/2025
--	--

Sante Fe Main Office  
Phone: (505) 476-3441

General Information  
Phone: (505) 629-6116

Online Phone Directory  
<https://www.emnrd.nm.gov/ocd/contact-us>

**State of New Mexico  
Energy, Minerals and Natural Resources  
Oil Conservation Division  
1220 S. St Francis Dr.  
Santa Fe, NM 87505**

QUESTIONS, Page 3

Action 535973

**QUESTIONS (continued)**

Operator: DEVON ENERGY PRODUCTION COMPANY, LP 333 West Sheridan Ave. Oklahoma City, OK 73102	OGRID: 6137
	Action Number: 535973
	Action Type: [C-141] Initial C-141 (C-141-v-Initial)

**QUESTIONS**

<b>Site Characterization</b>	
<i>Please answer all the questions in this group (only required when seeking remediation plan approval and beyond). This information must be provided to the appropriate district office no later than 90 days after the release discovery date.</i>	
What is the shallowest depth to groundwater beneath the area affected by the release in feet below ground surface (ft bgs)	Not answered.
What method was used to determine the depth to ground water	Not answered.
Did this release impact groundwater or surface water	Not answered.
<b>What is the minimum distance, between the closest lateral extents of the release and the following surface areas:</b>	
A continuously flowing watercourse or any other significant watercourse	Not answered.
Any lakebed, sinkhole, or playa lake (measured from the ordinary high-water mark)	Not answered.
An occupied permanent residence, school, hospital, institution, or church	Not answered.
A spring or a private domestic fresh water well used by less than five households for domestic or stock watering purposes	Not answered.
Any other fresh water well or spring	Not answered.
Incorporated municipal boundaries or a defined municipal fresh water well field	Not answered.
A wetland	Not answered.
A subsurface mine	Not answered.
An (non-karst) unstable area	Not answered.
Categorize the risk of this well / site being in a karst geology	Not answered.
A 100-year floodplain	Not answered.
Did the release impact areas not on an exploration, development, production, or storage site	Not answered.

<b>Remediation Plan</b>	
<i>Please answer all the questions that apply or are indicated. This information must be provided to the appropriate district office no later than 90 days after the release discovery date.</i>	
Requesting a remediation plan approval with this submission	No
<i>The OCD recognizes that proposed remediation measures may have to be minimally adjusted in accordance with the physical realities encountered during remediation. If the responsible party has any need to significantly deviate from the remediation plan proposed, then it should consult with the division to determine if another remediation plan submission is required.</i>	

Sante Fe Main Office  
Phone: (505) 476-3441

General Information  
Phone: (505) 629-6116

Online Phone Directory  
<https://www.emnrd.nm.gov/ocd/contact-us>

**State of New Mexico**  
**Energy, Minerals and Natural Resources**  
**Oil Conservation Division**  
**1220 S. St Francis Dr.**  
**Santa Fe, NM 87505**

CONDITIONS

Action 535973

**CONDITIONS**

Operator: DEVON ENERGY PRODUCTION COMPANY, LP 333 West Sheridan Ave. Oklahoma City, OK 73102	OGRID: 6137
	Action Number: 535973
	Action Type: [C-141] Initial C-141 (C-141-v-Initial)

**CONDITIONS**

Created By	Condition	Condition Date
nvez	None	12/18/2025

Sante Fe Main Office  
Phone: (505) 476-3441

General Information  
Phone: (505) 629-6116

Online Phone Directory  
<https://www.emnrd.nm.gov/ocd/contact-us>

**State of New Mexico**  
**Energy, Minerals and Natural Resources**  
**Oil Conservation Division**  
**1220 S. St Francis Dr.**  
**Santa Fe, NM 87505**

QUESTIONS

Action 539984

**QUESTIONS**

Operator: DEVON ENERGY PRODUCTION COMPANY, LP 333 West Sheridan Ave. Oklahoma City, OK 73102	OGRID: 6137
	Action Number: 539984
	Action Type: [NOTIFY] Notification Of Sampling (C-141N)

**QUESTIONS**

<b>Prerequisites</b>	
Incident ID (n#)	nAPP2534534495
Incident Name	NAPP2534534495 SEA SNAKE 35 STATE #004H @ 30-025-42285
Incident Type	Oil Release
Incident Status	Initial C-141 Approved
Incident Well	[30-025-42285] SEA SNAKE 35 STATE #004H

<b>Location of Release Source</b>	
Site Name	SEA SNAKE 35 STATE #004H
Date Release Discovered	12/08/2025
Surface Owner	State

<b>Sampling Event General Information</b>	
<i>Please answer all the questions in this group.</i>	
What is the sampling surface area in square feet	2,131
What is the estimated number of samples that will be gathered	17
Sampling date pursuant to Subparagraph (a) of Paragraph (1) of Subsection D of 19.15.29.12 NMAC	01/07/2026
Time sampling will commence	08:00 AM
Please provide any information necessary for observers to contact samplers	Carmona Resources – 432-701-5475
Please provide any information necessary for navigation to sampling site	( 32.25485154,-103.53725422)

Sante Fe Main Office  
Phone: (505) 476-3441

General Information  
Phone: (505) 629-6116

Online Phone Directory  
<https://www.emnrd.nm.gov/oecd/contact-us>

**State of New Mexico**  
**Energy, Minerals and Natural Resources**  
**Oil Conservation Division**  
**1220 S. St Francis Dr.**  
**Santa Fe, NM 87505**

CONDITIONS

Action 539984

**CONDITIONS**

Operator: DEVON ENERGY PRODUCTION COMPANY, LP 333 West Sheridan Ave. Oklahoma City, OK 73102	OGRID: 6137
	Action Number: 539984
	Action Type: [NOTIFY] Notification Of Sampling (C-141N)

**CONDITIONS**

Created By	Condition	Condition Date
jraley	Failure to notify the OCD of sampling events including any changes in date/time per the requirements of 19.15.29.12.D.(1).(a) NMAC, may result in the remediation closure samples not being accepted.	1/5/2026
jraley	If confirmation sampling is going to take place over multiple days, individual C-141N applications must be submitted for each sampling date. Date ranges are not currently accepted on the C-141N application.	1/5/2026

Sante Fe Main Office  
Phone: (505) 476-3441

General Information  
Phone: (505) 629-6116

Online Phone Directory  
<https://www.emnrd.nm.gov/ocd/contact-us>

**State of New Mexico  
Energy, Minerals and Natural Resources  
Oil Conservation Division  
1220 S. St Francis Dr.  
Santa Fe, NM 87505**

QUESTIONS

Action 539993

**QUESTIONS**

Operator: DEVON ENERGY PRODUCTION COMPANY, LP 333 West Sheridan Ave. Oklahoma City, OK 73102	OGRID: 6137
	Action Number: 539993
	Action Type: [NOTIFY] Notification Of Sampling (C-141N)

**QUESTIONS**

<b>Prerequisites</b>	
Incident ID (n#)	nAPP2534534495
Incident Name	NAPP2534534495 SEA SNAKE 35 STATE #004H @ 30-025-42285
Incident Type	Oil Release
Incident Status	Initial C-141 Approved
Incident Well	[30-025-42285] SEA SNAKE 35 STATE #004H

<b>Location of Release Source</b>	
Site Name	SEA SNAKE 35 STATE #004H
Date Release Discovered	12/08/2025
Surface Owner	State

<b>Sampling Event General Information</b>	
<i>Please answer all the questions in this group.</i>	
What is the sampling surface area in square feet	2,131
What is the estimated number of samples that will be gathered	17
Sampling date pursuant to Subparagraph (a) of Paragraph (1) of Subsection D of 19.15.29.12 NMAC	01/08/2026
Time sampling will commence	08:00 AM
Please provide any information necessary for observers to contact samplers	Carmona Resources – 432-701-5475
Please provide any information necessary for navigation to sampling site	( 32.25485154,-103.53725422)

Sante Fe Main Office  
Phone: (505) 476-3441

General Information  
Phone: (505) 629-6116

Online Phone Directory  
<https://www.emnrd.nm.gov/oecd/contact-us>

**State of New Mexico**  
**Energy, Minerals and Natural Resources**  
**Oil Conservation Division**  
**1220 S. St Francis Dr.**  
**Santa Fe, NM 87505**

CONDITIONS

Action 539993

**CONDITIONS**

Operator: DEVON ENERGY PRODUCTION COMPANY, LP 333 West Sheridan Ave. Oklahoma City, OK 73102	OGRID: 6137
	Action Number: 539993
	Action Type: [NOTIFY] Notification Of Sampling (C-141N)

**CONDITIONS**

Created By	Condition	Condition Date
jraley	Failure to notify the OCD of sampling events including any changes in date/time per the requirements of 19.15.29.12.D.(1).(a) NMAC, may result in the remediation closure samples not being accepted.	1/5/2026
jraley	If confirmation sampling is going to take place over multiple days, individual C-141N applications must be submitted for each sampling date. Date ranges are not currently accepted on the C-141N application.	1/5/2026

## APPENDIX D

CARMONA RESOURCES

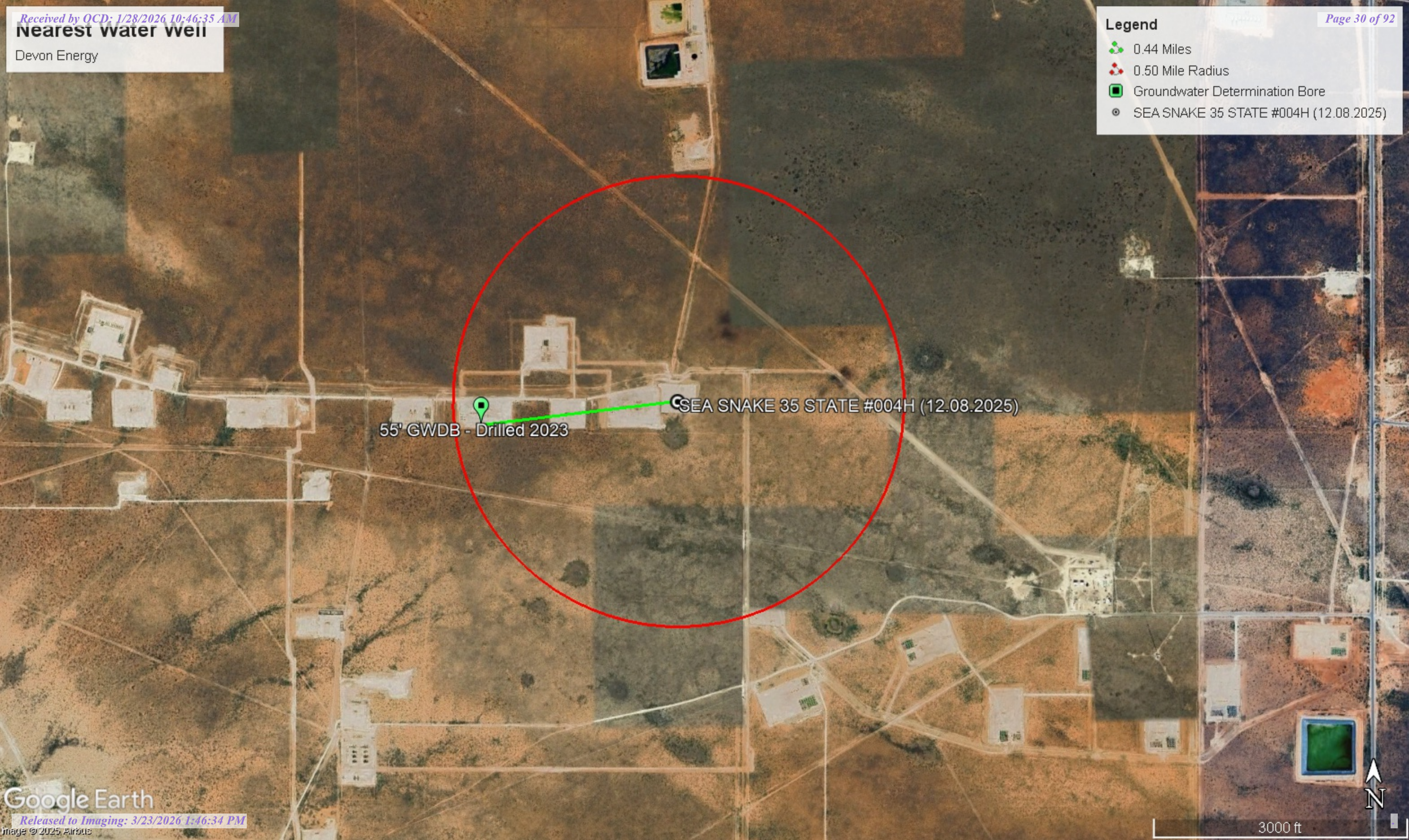


# Nearest water well

Devon Energy

**Legend**

- 0.44 Miles
- 0.50 Mile Radius
- Groundwater Determination Bore
- SEA SNAKE 35 STATE #004H (12.08.2025)





55' GWDB - Drilled 2023

SEA SNAKE 35 STATE #004H (12.08.2025)

# Low Karst

Devon Energy

**Legend**

-  Low
-  SEA SNAKE 35 STATE #004H (12.08.2025)

SEA SNAKE 35 STATE #004H (12.08.2025)



# New Mexico Office of the State Engineer

## Water Column/Average Depth to Water

(A CLW##### in the POD suffix indicates the POD has been replaced & no longer serves a water right file.) (R=POD has been replaced, O=orphaned, C=the file is closed)

(quarters are smallest to largest)

(meters)

(In feet)

POD Number	Code	Sub basin	County	Q64	Q16	Q4	Sec	Tws	Range	X	Y	Map	Distance	Well Depth	Depth Water	Water Column
<a href="#">C 04753 POD1</a>		CUB	LE	SE	SE	SW	35	23S	33E	637074.8	3569526.1	●	714	55		
<a href="#">C 04804 POD1</a>		CUB	LE	NW	NW	SW	01	24S	33E	638093.4	3568540.8	●	1122	100		
<a href="#">C 04014 POD5</a>		CUB	LE	NW	SE	NE	01	24S	33E	639284.2	3569086.3	●	1593	95	85	10
<a href="#">C 04014 POD4</a>		CUB	LE	SW	SE	NE	01	24S	33E	639295.2	3568859.7	●	1692	96	86	10
<a href="#">C 04014 POD3</a>		CUB	LE	NE	SE	NE	01	24S	33E	639497.3	3569007.3	●	1820	95	87	8
<a href="#">C 04014 POD2</a>		CUB	LE	SE	SE	NE	01	24S	33E	639655.6	3568917.1	●	2000	95	81	14
<a href="#">C 02284</a>		CUB	LE	SE	NE	SE	26	23S	33E	637907.0	3571626.0 *	●	2009	325	225	100
<a href="#">C 04014 POD1</a>		CUB	LE	NW	NW	SW	06	24S	34E	639811.3	3568638.9	●	2253	91	81	10
<a href="#">C 04595 POD1</a>		CUB	LE	SE	SW	SW	34	23S	33E	635149.5	3569564.9	●	2634	55		
<a href="#">C 02283</a>		CUB	LE	SE	NE	NE	26	23S	33E	637896.0	3572431.0 *	●	2813	325	225	100
<a href="#">C 02282</a>		CUB	LE	SW	NW	NW	25	23S	33E	638098.0	3572436.0 *	●	2833	325	225	100
<a href="#">C 04895 POD1</a>		CUB	LE	NW	SE	SW	27	23S	33E	635374.0	3571309.0	●	2942	55		
<a href="#">C 04741 POD1</a>		CUB	LE	NW	NE	SE	10	24S	33E	636076.5	3567039.6	●	3093	55		
<a href="#">C 04929 POD1</a>		CUB	LE	SE	SW	SW	23	23S	33E	636685.4	3572738.9	●	3306	55		
<a href="#">C 04919 POD1</a>		CUB	LE	NE	NW	NE	14	24S	33E	637528.5	3566281.5	●	3348	105		
<a href="#">C 04814 POD1</a>		CUB	LE	SW	SE	NE	06	24S	34E	641053.2	3568837.6	●	3362	55		

Average Depth to Water: **136 feet**

Minimum Depth: **81 feet**

Maximum Depth: **225 feet**

**Record Count:** 16

**UTM Filters (in meters):**

**Easting:** 637783.00

**Northing:** 3569620.00

**Radius:** 3500

\* UTM location was derived from PLSS - see Help

The data is furnished by the NMOSE/ISC and is accepted by the recipient with the expressed understanding that the OSE/ISC make no warranties, expressed or implied, concerning the accuracy, completeness, reliability, usability, or suitability for any particular purpose of the data.



# WELL RECORD & LOG

OFFICE OF THE STATE ENGINEER

[www.ose.state.nm.us](http://www.ose.state.nm.us)

OSE DTI AUG 21 2023 PM2:00

1. GENERAL AND WELL LOCATION	OSE POD NO. (WELL NO.) C-4753-POD1		WELL TAG ID NO.		OSE FILE NO(S).		
	WELL OWNER NAME(S) Devon Energy Resources				PHONE (OPTIONAL)		
	WELL OWNER MAILING ADDRESS 205 E. Bender Road #150				CITY Hobbs	STATE NM	ZIP 88240
	WELL LOCATION (FROM GPS)	LATITUDE	DEGREES 32	MINUTES 15'	SECONDS 14.6" N	* ACCURACY REQUIRED: ONE TENTH OF A SECOND	
		LONGITUDE	103	32'	41.3" W	* DATUM REQUIRED: WGS 84	
DESCRIPTION RELATING WELL LOCATION TO STREET ADDRESS AND COMMON LANDMARKS - PLSS (SECTION, TOWNSHIP, RANGE) WHERE AVAILABLE							

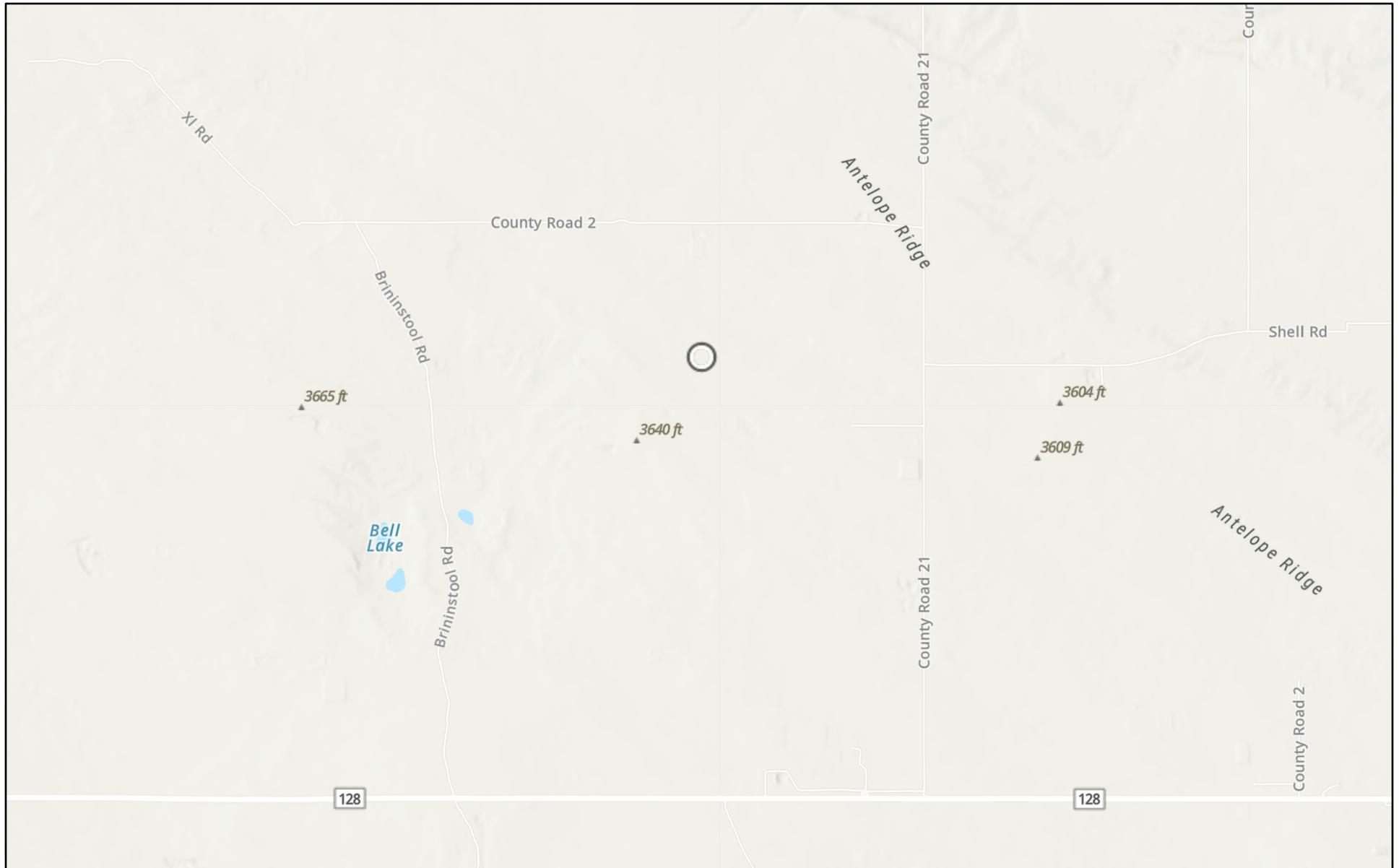
2. DRILLING & CASING INFORMATION	LICENSE NO. 1833	NAME OF LICENSED DRILLER Jason Maley			NAME OF WELL DRILLING COMPANY Vision Resources			
	DRILLING STARTED 7-27-23	DRILLING ENDED 7-27-23	DEPTH OF COMPLETED WELL (FT) 55'	BORE HOLE DEPTH (FT) 55'	DEPTH WATER FIRST ENCOUNTERED (FT) Dry			
	COMPLETED WELL IS: <input type="checkbox"/> ARTESIAN *add Centralizer info below <input checked="" type="checkbox"/> DRY HOLE <input type="checkbox"/> SHALLOW (UNCONFINED)				STATIC WATER LEVEL IN COMPLETED WELL (FT) Dry	DATE STATIC MEASURED		
	DRILLING FLUID: <input checked="" type="checkbox"/> AIR <input type="checkbox"/> MUD ADDITIVES - SPECIFY:							
	DRILLING METHOD: <input checked="" type="checkbox"/> ROTARY <input type="checkbox"/> HAMMER <input type="checkbox"/> CABLE TOOL <input type="checkbox"/> OTHER - SPECIFY:					CHECK HERE IF PITLESS ADAPTER IS INSTALLED <input type="checkbox"/>		
	DEPTH (feet bgl)		BORE HOLE DIAM (inches)	CASING MATERIAL AND/OR GRADE (include each casing string, and note sections of screen)	CASING CONNECTION TYPE (add coupling diameter)	CASING INSIDE DIAM. (inches)	CASING WALL THICKNESS (inches)	SLOT SIZE (inches)
	FROM	TO						
	0	45	6	2" PVC SCH 40	Thread	2"	SCH 40	-
	45	55	6	2" PVC SCH 40	Thread	2"	SCH 40	.02

3. ANNULAR MATERIAL	DEPTH (feet bgl)		BORE HOLE DIAM. (inches)	LIST ANNULAR SEAL MATERIAL AND GRAVEL PACK SIZE- RANGE BY INTERVAL <i>*(if using Centralizers for Artesian wells- indicate the spacing below)</i>	AMOUNT (cubic feet)	METHOD OF PLACEMENT
	FROM	TO				
				None pulled and plugged		

FOR OSE INTERNAL USE			WR-20 WELL RECORD & LOG (Version 09/22/2022)		
FILE NO. C-04753	POD NO. 1	TRN NO. 748814			
LOCATION 23S. 33E. 35. 443	WELL TAG ID NO.	PAGE 1 OF 2			

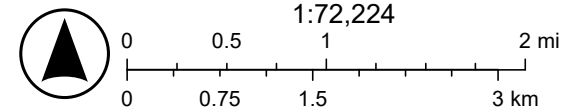


# SEA SNAKE 35 STATE #004H (12.08.2025)



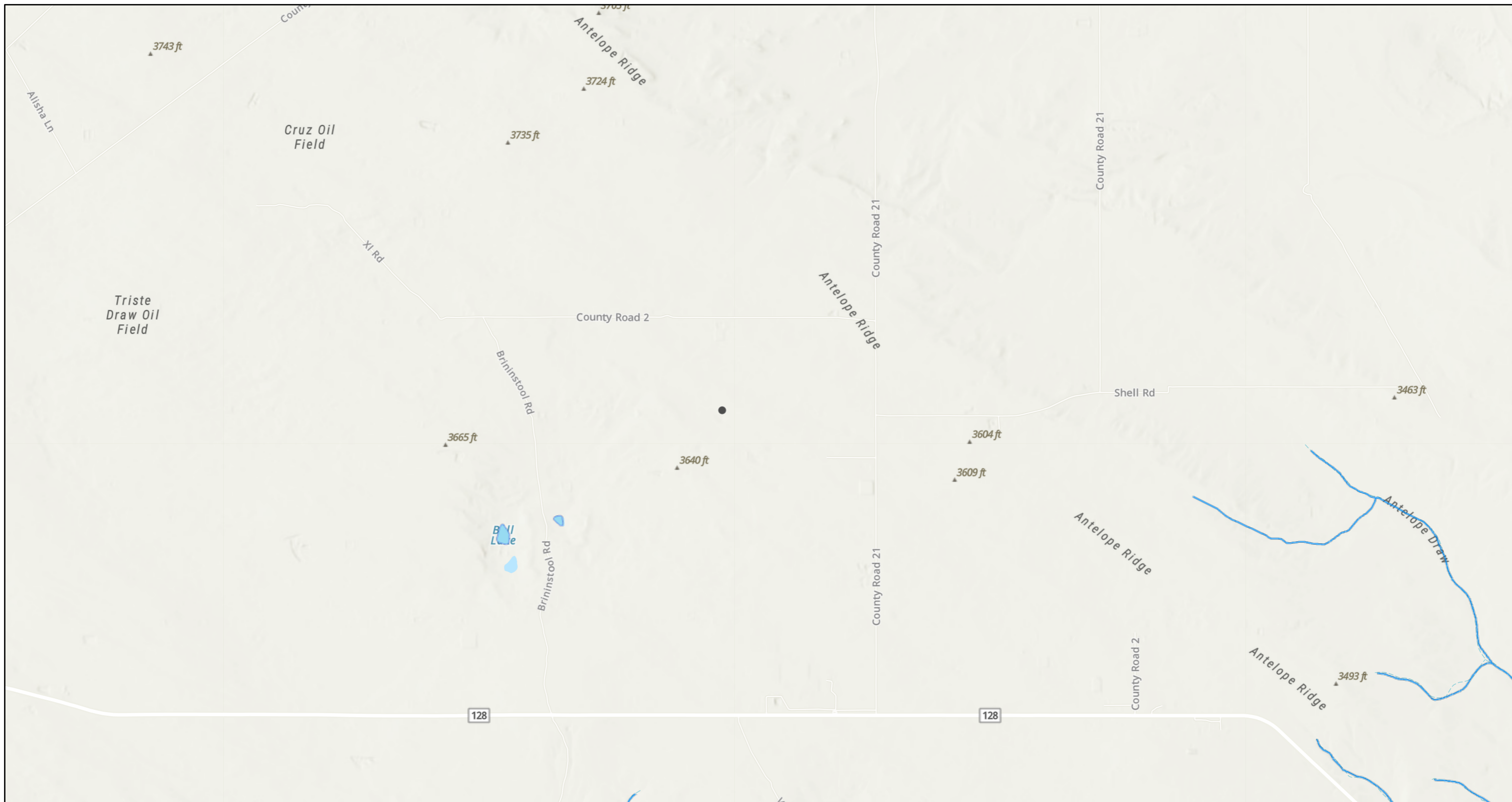
12/15/2025

World\_Hillshade



Esri, NASA, NGA, USGS, FEMA, Sources: Esri, TomTom, Garmin, FAO, NOAA, USGS, (c) OpenStreetMap contributors, and the GIS User

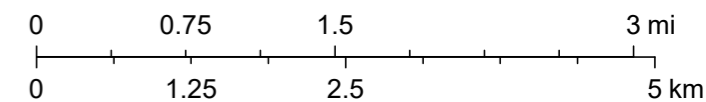
# SEA SNAKE 35 STATE #004H (12.08.2025)



12/15/2025, 8:08:32 AM

- OSW Water Bodys
- OSE Streams

1:72,224








Esri, NASA, NGA, USGS, FEMA, Sources: Esri, TomTom, Garmin, FAO, NOAA, USGS, © OpenStreetMap contributors, and the GIS User Community, NM OSE






January 12, 2026

**Wetlands**

-  Estuarine and Marine Deepwater
-  Estuarine and Marine Wetland

-  Freshwater Emergent Wetland
-  Freshwater Forested/Shrub Wetland
-  Freshwater Pond

-  Lake
-  Other
-  Riverine

This map is for general reference only. The US Fish and Wildlife Service is not responsible for the accuracy or currentness of the base data shown on this map. All wetlands related data should be used in accordance with the layer metadata found on the Wetlands Mapper web site.

## APPENDIX E

CARMONA RESOURCES





Environment Testing

- 1
- 2
- 3
- 4
- 5
- 6
- 7
- 8
- 9
- 10
- 11
- 12
- 13
- 14

# ANALYTICAL REPORT

## PREPARED FOR

Attn: Ashton Thielke  
Carmona Resources  
310 W Wall St  
Ste 500  
Midland, Texas 79701

Generated 1/12/2026 3:52:57 PM

## JOB DESCRIPTION

Sea Snake 35 #004H  
Lea County NM

## JOB NUMBER

880-66744-1

Eurofins Midland  
1211 W. Florida Ave  
Midland TX 79701



# Eurofins Midland

## Job Notes

This report may not be reproduced except in full, and with written approval from the laboratory. The results relate only to the samples tested. For questions please contact the Project Manager at the e-mail address or telephone number listed on this page.

Analytical test results meet all requirements of the associated regulatory program (i.e., NELAC (TNI), DoD, and ISO 17025) unless otherwise noted under the individual analysis.

## Authorization



Generated  
1/12/2026 3:52:57 PM

Authorized for release by  
Jessica Kramer, Project Manager  
[Jessica.Kramer@et.eurofinsus.com](mailto:Jessica.Kramer@et.eurofinsus.com)  
(432)704-5440

- 1
- 2
- 3
- 4
- 5
- 6
- 7
- 8
- 9
- 10
- 11
- 12
- 13
- 14

Client: Carmona Resources  
Project/Site: Sea Snake 35 #004H

Laboratory Job ID: 880-66744-1  
SDG: Lea County NM

- 1
- 2
- 3
- 4
- 5
- 6
- 7
- 8
- 9
- 10
- 11
- 12
- 13
- 14

# Table of Contents

Cover Page . . . . .	1
Table of Contents . . . . .	3
Definitions/Glossary . . . . .	4
Case Narrative . . . . .	5
Client Sample Results . . . . .	6
Surrogate Summary . . . . .	15
QC Sample Results . . . . .	16
QC Association Summary . . . . .	21
Lab Chronicle . . . . .	24
Certification Summary . . . . .	28
Method Summary . . . . .	29
Sample Summary . . . . .	30
Chain of Custody . . . . .	31
Receipt Checklists . . . . .	33

## Definitions/Glossary

Client: Carmona Resources  
Project/Site: Sea Snake 35 #004H

Job ID: 880-66744-1  
SDG: Lea County NM

## Qualifiers

## GC VOA

Qualifier	Qualifier Description
U	Indicates the analyte was analyzed for but not detected.

## GC Semi VOA

Qualifier	Qualifier Description
S1+	Surrogate recovery exceeds control limits, high biased.
U	Indicates the analyte was analyzed for but not detected.

## HPLC/IC

Qualifier	Qualifier Description
F1	MS and/or MSD recovery exceeds control limits.
U	Indicates the analyte was analyzed for but not detected.

## Glossary

Abbreviation	These commonly used abbreviations may or may not be present in this report.
☼	Listed under the "D" column to designate that the result is reported on a dry weight basis
%R	Percent Recovery
CFL	Contains Free Liquid
CFU	Colony Forming Unit
CNF	Contains No Free Liquid
DER	Duplicate Error Ratio (normalized absolute difference)
Dil Fac	Dilution Factor
DL	Detection Limit (DoD/DOE)
DL, RA, RE, IN	Indicates a Dilution, Re-analysis, Re-extraction, or additional Initial metals/anion analysis of the sample
DLC	Decision Level Concentration (Radiochemistry)
EDL	Estimated Detection Limit (Dioxin)
LOD	Limit of Detection (DoD/DOE)
LOQ	Limit of Quantitation (DoD/DOE)
MCL	EPA recommended "Maximum Contaminant Level"
MDA	Minimum Detectable Activity (Radiochemistry)
MDC	Minimum Detectable Concentration (Radiochemistry)
MDL	Method Detection Limit
ML	Minimum Level (Dioxin)
MPN	Most Probable Number
MQL	Method Quantitation Limit
NC	Not Calculated
ND	Not Detected at the reporting limit (or MDL or EDL if shown)
NEG	Negative / Absent
POS	Positive / Present
PQL	Practical Quantitation Limit
PRES	Presumptive
QC	Quality Control
RER	Relative Error Ratio (Radiochemistry)
RL	Reporting Limit or Requested Limit (Radiochemistry)
RPD	Relative Percent Difference, a measure of the relative difference between two points
TEF	Toxicity Equivalent Factor (Dioxin)
TEQ	Toxicity Equivalent Quotient (Dioxin)
TNTC	Too Numerous To Count

## Case Narrative

Client: Carmona Resources  
Project: Sea Snake 35 #004H

Job ID: 880-66744-1

**Job ID: 880-66744-1**

**Eurofins Midland**

### Job Narrative 880-66744-1

The analytical test results presented in this report meet all requirements of the associated regulatory program listed on the Accreditation/Certification Summary Page, unless otherwise noted. Data qualifiers and/or narrative comments are included to explain any exceptions, if applicable. Regulated compliance samples (e.g. SDWA, NPDES) must comply with associated agency requirements/permits.

- Matrix-specific batch QC (e.g., MS, MSD, SD) may not be reported when insufficient sample volume is available or when site-specific QC samples are not submitted. In such cases, a Laboratory Control Sample Duplicate (LCSD) may be analyzed to provide precision data for the batch.
- For samples analyzed using surrogate and/or isotope dilution analytes, any recoveries falling outside of established acceptance criteria are re-prepared and/or re-analyzed to confirm results, unless the deviation is due to sample dilution or otherwise explained in the case narrative.

#### Receipt

The samples were received on 1/7/2026 3:34 PM. Unless otherwise noted below, the samples arrived in good condition, and, where required, properly preserved and on ice. The temperature of the cooler at receipt time was 5.2°C.

#### GC VOA

No additional analytical or quality issues were noted, other than those described above or in the Definitions/ Glossary page.

#### Diesel Range Organics

Method 8015MOD\_NM: Surrogate recovery for the following sample was outside control limits: (LCS 880-128406/2-A). Evidence of matrix interference is present; therefore, re-extraction and/or re-analysis was not performed.

Method 8015MOD\_NM: Surrogate recovery for the following sample was outside control limits: (LCSD 880-128406/3-A). Evidence of matrix interference is present; therefore, re-extraction and/or re-analysis was not performed.

No additional analytical or quality issues were noted, other than those described above or in the Definitions/ Glossary page.

#### HPLC/IC

Method 300\_ORGFM\_28D - Soluble: The matrix spike / matrix spike duplicate (MS/MSD) recoveries for preparation batch 880-128420 and analytical batch 880-128486 were outside control limits for Chloride . See QC Sample Results for detail. Sample matrix interference and/or non-homogeneity are suspected because the associated laboratory control sample (LCS) recovery is within acceptance limits.

The associated samples are: CS-1 (0.5') (880-66744-1), CS-2 (0.5') (880-66744-2), CS-3 (0.5') (880-66744-3), CS-4 (0.5') (880-66744-4), (880-66668-A-31-C), (880-66668-A-31-D MS) and (880-66668-A-31-E MSD).

No additional analytical or quality issues were noted, other than those described above or in the Definitions/ Glossary page.

Eurofins Midland

### Client Sample Results

Client: Carmona Resources  
 Project/Site: Sea Snake 35 #004H

Job ID: 880-66744-1  
 SDG: Lea County NM

**Client Sample ID: CS-1 (0.5')**

**Lab Sample ID: 880-66744-1**

Date Collected: 01/07/26 00:00

Matrix: Solid

Date Received: 01/07/26 15:34

**Method: SW846 8021B - Volatile Organic Compounds (GC)**

Analyte	Result	Qualifier	RL	MDL	Unit	D	Prepared	Analyzed	Dil Fac
Benzene	<0.00200	U	0.00200		mg/Kg		01/08/26 12:14	01/09/26 11:41	1
Toluene	<0.00200	U	0.00200		mg/Kg		01/08/26 12:14	01/09/26 11:41	1
Ethylbenzene	<0.00200	U	0.00200		mg/Kg		01/08/26 12:14	01/09/26 11:41	1
m-Xylene & p-Xylene	<0.00399	U	0.00399		mg/Kg		01/08/26 12:14	01/09/26 11:41	1
o-Xylene	<0.00200	U	0.00200		mg/Kg		01/08/26 12:14	01/09/26 11:41	1
Xylenes, Total	<0.00399	U	0.00399		mg/Kg		01/08/26 12:14	01/09/26 11:41	1

Surrogate	%Recovery	Qualifier	Limits	Prepared	Analyzed	Dil Fac
4-Bromofluorobenzene (Surr)	79		70 - 130	01/08/26 12:14	01/09/26 11:41	1
1,4-Difluorobenzene (Surr)	78		70 - 130	01/08/26 12:14	01/09/26 11:41	1

**Method: TAL SOP Total BTEX - Total BTEX Calculation**

Analyte	Result	Qualifier	RL	MDL	Unit	D	Prepared	Analyzed	Dil Fac
Total BTEX	<0.00399	U	0.00399		mg/Kg			01/09/26 11:41	1

**Method: SW846 8015 NM - Diesel Range Organics (DRO) (GC)**

Analyte	Result	Qualifier	RL	MDL	Unit	D	Prepared	Analyzed	Dil Fac
Total TPH	663		49.9		mg/Kg			01/09/26 19:11	1

**Method: SW846 8015B NM - Diesel Range Organics (DRO) (GC)**

Analyte	Result	Qualifier	RL	MDL	Unit	D	Prepared	Analyzed	Dil Fac
Gasoline Range Organics (GRO)-C6-C10	<49.9	U	49.9		mg/Kg		01/07/26 16:24	01/09/26 19:11	1
Diesel Range Organics (Over C10-C28)	536		49.9		mg/Kg		01/07/26 16:24	01/09/26 19:11	1
Oil Range Organics (Over C28-C36)	127		49.9		mg/Kg		01/07/26 16:24	01/09/26 19:11	1

Surrogate	%Recovery	Qualifier	Limits	Prepared	Analyzed	Dil Fac
1-Chlorooctane	121		70 - 130	01/07/26 16:24	01/09/26 19:11	1
o-Terphenyl	128		70 - 130	01/07/26 16:24	01/09/26 19:11	1

**Method: EPA 300.0 - Anions, Ion Chromatography - Soluble**

Analyte	Result	Qualifier	RL	MDL	Unit	D	Prepared	Analyzed	Dil Fac
Chloride	754		10.1		mg/Kg			01/08/26 17:17	1

**Client Sample ID: CS-2 (0.5')**

**Lab Sample ID: 880-66744-2**

Date Collected: 01/07/26 00:00

Matrix: Solid

Date Received: 01/07/26 15:34

**Method: SW846 8021B - Volatile Organic Compounds (GC)**

Analyte	Result	Qualifier	RL	MDL	Unit	D	Prepared	Analyzed	Dil Fac
Benzene	<0.00201	U	0.00201		mg/Kg		01/08/26 12:14	01/09/26 12:02	1
Toluene	<0.00201	U	0.00201		mg/Kg		01/08/26 12:14	01/09/26 12:02	1
Ethylbenzene	<0.00201	U	0.00201		mg/Kg		01/08/26 12:14	01/09/26 12:02	1
m-Xylene & p-Xylene	<0.00402	U	0.00402		mg/Kg		01/08/26 12:14	01/09/26 12:02	1
o-Xylene	<0.00201	U	0.00201		mg/Kg		01/08/26 12:14	01/09/26 12:02	1
Xylenes, Total	<0.00402	U	0.00402		mg/Kg		01/08/26 12:14	01/09/26 12:02	1

Surrogate	%Recovery	Qualifier	Limits	Prepared	Analyzed	Dil Fac
4-Bromofluorobenzene (Surr)	107		70 - 130	01/08/26 12:14	01/09/26 12:02	1
1,4-Difluorobenzene (Surr)	108		70 - 130	01/08/26 12:14	01/09/26 12:02	1

Eurofins Midland

### Client Sample Results

Client: Carmona Resources  
 Project/Site: Sea Snake 35 #004H

Job ID: 880-66744-1  
 SDG: Lea County NM

**Client Sample ID: CS-2 (0.5')**

**Lab Sample ID: 880-66744-2**

Date Collected: 01/07/26 00:00

Matrix: Solid

Date Received: 01/07/26 15:34

**Method: TAL SOP Total BTEX - Total BTEX Calculation**

Analyte	Result	Qualifier	RL	MDL	Unit	D	Prepared	Analyzed	Dil Fac
Total BTEX	<0.00402	U	0.00402		mg/Kg			01/09/26 12:02	1

**Method: SW846 8015 NM - Diesel Range Organics (DRO) (GC)**

Analyte	Result	Qualifier	RL	MDL	Unit	D	Prepared	Analyzed	Dil Fac
Total TPH	269		50.0		mg/Kg			01/09/26 19:24	1

**Method: SW846 8015B NM - Diesel Range Organics (DRO) (GC)**

Analyte	Result	Qualifier	RL	MDL	Unit	D	Prepared	Analyzed	Dil Fac
Gasoline Range Organics (GRO)-C6-C10	<50.0	U	50.0		mg/Kg		01/07/26 16:24	01/09/26 19:24	1
<b>Diesel Range Organics (Over C10-C28)</b>	269		50.0		mg/Kg		01/07/26 16:24	01/09/26 19:24	1
Oil Range Organics (Over C28-C36)	<50.0	U	50.0		mg/Kg		01/07/26 16:24	01/09/26 19:24	1
Surrogate	%Recovery	Qualifier	Limits				Prepared	Analyzed	Dil Fac
1-Chlorooctane	110		70 - 130				01/07/26 16:24	01/09/26 19:24	1
o-Terphenyl	110		70 - 130				01/07/26 16:24	01/09/26 19:24	1

**Method: EPA 300.0 - Anions, Ion Chromatography - Soluble**

Analyte	Result	Qualifier	RL	MDL	Unit	D	Prepared	Analyzed	Dil Fac
Chloride	732		9.94		mg/Kg			01/08/26 17:24	1

**Client Sample ID: CS-3 (0.5')**

**Lab Sample ID: 880-66744-3**

Date Collected: 01/07/26 00:00

Matrix: Solid

Date Received: 01/07/26 15:34

**Method: SW846 8021B - Volatile Organic Compounds (GC)**

Analyte	Result	Qualifier	RL	MDL	Unit	D	Prepared	Analyzed	Dil Fac
Benzene	<0.00202	U	0.00202		mg/Kg		01/08/26 12:14	01/09/26 12:22	1
Toluene	<0.00202	U	0.00202		mg/Kg		01/08/26 12:14	01/09/26 12:22	1
Ethylbenzene	<0.00202	U	0.00202		mg/Kg		01/08/26 12:14	01/09/26 12:22	1
m-Xylene & p-Xylene	<0.00404	U	0.00404		mg/Kg		01/08/26 12:14	01/09/26 12:22	1
o-Xylene	<0.00202	U	0.00202		mg/Kg		01/08/26 12:14	01/09/26 12:22	1
Xylenes, Total	<0.00404	U	0.00404		mg/Kg		01/08/26 12:14	01/09/26 12:22	1
Surrogate	%Recovery	Qualifier	Limits				Prepared	Analyzed	Dil Fac
4-Bromofluorobenzene (Surr)	77		70 - 130				01/08/26 12:14	01/09/26 12:22	1
1,4-Difluorobenzene (Surr)	110		70 - 130				01/08/26 12:14	01/09/26 12:22	1

**Method: TAL SOP Total BTEX - Total BTEX Calculation**

Analyte	Result	Qualifier	RL	MDL	Unit	D	Prepared	Analyzed	Dil Fac
Total BTEX	<0.00404	U	0.00404		mg/Kg			01/09/26 12:22	1

**Method: SW846 8015 NM - Diesel Range Organics (DRO) (GC)**

Analyte	Result	Qualifier	RL	MDL	Unit	D	Prepared	Analyzed	Dil Fac
Total TPH	221		49.9		mg/Kg			01/09/26 19:39	1

**Method: SW846 8015B NM - Diesel Range Organics (DRO) (GC)**

Analyte	Result	Qualifier	RL	MDL	Unit	D	Prepared	Analyzed	Dil Fac
Gasoline Range Organics (GRO)-C6-C10	<49.9	U	49.9		mg/Kg		01/07/26 16:24	01/09/26 19:39	1
<b>Diesel Range Organics (Over C10-C28)</b>	221		49.9		mg/Kg		01/07/26 16:24	01/09/26 19:39	1

Eurofins Midland

### Client Sample Results

Client: Carmona Resources  
 Project/Site: Sea Snake 35 #004H

Job ID: 880-66744-1  
 SDG: Lea County NM

**Client Sample ID: CS-3 (0.5')**

**Lab Sample ID: 880-66744-3**

Date Collected: 01/07/26 00:00

Matrix: Solid

Date Received: 01/07/26 15:34

**Method: SW846 8015B NM - Diesel Range Organics (DRO) (GC) (Continued)**

Analyte	Result	Qualifier	RL	MDL	Unit	D	Prepared	Analyzed	Dil Fac
Oil Range Organics (Over C28-C36)	<49.9	U	49.9		mg/Kg		01/07/26 16:24	01/09/26 19:39	1
<b>Surrogate</b>	<b>%Recovery</b>	<b>Qualifier</b>	<b>Limits</b>				<b>Prepared</b>	<b>Analyzed</b>	<b>Dil Fac</b>
1-Chlorooctane	103		70 - 130				01/07/26 16:24	01/09/26 19:39	1
o-Terphenyl	102		70 - 130				01/07/26 16:24	01/09/26 19:39	1

**Method: EPA 300.0 - Anions, Ion Chromatography - Soluble**

Analyte	Result	Qualifier	RL	MDL	Unit	D	Prepared	Analyzed	Dil Fac
Chloride	696		9.92		mg/Kg			01/08/26 17:31	1

**Client Sample ID: CS-4 (0.5')**

**Lab Sample ID: 880-66744-4**

Date Collected: 01/07/26 00:00

Matrix: Solid

Date Received: 01/07/26 15:34

**Method: SW846 8021B - Volatile Organic Compounds (GC)**

Analyte	Result	Qualifier	RL	MDL	Unit	D	Prepared	Analyzed	Dil Fac
Benzene	<0.00199	U	0.00199		mg/Kg		01/08/26 12:14	01/09/26 12:43	1
Toluene	<0.00199	U	0.00199		mg/Kg		01/08/26 12:14	01/09/26 12:43	1
Ethylbenzene	<0.00199	U	0.00199		mg/Kg		01/08/26 12:14	01/09/26 12:43	1
m-Xylene & p-Xylene	<0.00398	U	0.00398		mg/Kg		01/08/26 12:14	01/09/26 12:43	1
o-Xylene	<0.00199	U	0.00199		mg/Kg		01/08/26 12:14	01/09/26 12:43	1
Xylenes, Total	<0.00398	U	0.00398		mg/Kg		01/08/26 12:14	01/09/26 12:43	1
<b>Surrogate</b>	<b>%Recovery</b>	<b>Qualifier</b>	<b>Limits</b>				<b>Prepared</b>	<b>Analyzed</b>	<b>Dil Fac</b>
4-Bromofluorobenzene (Surr)	108		70 - 130				01/08/26 12:14	01/09/26 12:43	1
1,4-Difluorobenzene (Surr)	110		70 - 130				01/08/26 12:14	01/09/26 12:43	1

**Method: TAL SOP Total BTEX - Total BTEX Calculation**

Analyte	Result	Qualifier	RL	MDL	Unit	D	Prepared	Analyzed	Dil Fac
Total BTEX	<0.00398	U	0.00398		mg/Kg			01/09/26 12:43	1

**Method: SW846 8015 NM - Diesel Range Organics (DRO) (GC)**

Analyte	Result	Qualifier	RL	MDL	Unit	D	Prepared	Analyzed	Dil Fac
Total TPH	248		49.9		mg/Kg			01/09/26 19:52	1

**Method: SW846 8015B NM - Diesel Range Organics (DRO) (GC)**

Analyte	Result	Qualifier	RL	MDL	Unit	D	Prepared	Analyzed	Dil Fac
Gasoline Range Organics (GRO)-C6-C10	<49.9	U	49.9		mg/Kg		01/07/26 16:24	01/09/26 19:52	1
<b>Diesel Range Organics (Over C10-C28)</b>	<b>248</b>		<b>49.9</b>		<b>mg/Kg</b>		<b>01/07/26 16:24</b>	<b>01/09/26 19:52</b>	<b>1</b>
Oil Range Organics (Over C28-C36)	<49.9	U	49.9		mg/Kg		01/07/26 16:24	01/09/26 19:52	1
<b>Surrogate</b>	<b>%Recovery</b>	<b>Qualifier</b>	<b>Limits</b>				<b>Prepared</b>	<b>Analyzed</b>	<b>Dil Fac</b>
1-Chlorooctane	100		70 - 130				01/07/26 16:24	01/09/26 19:52	1
o-Terphenyl	100		70 - 130				01/07/26 16:24	01/09/26 19:52	1

**Method: EPA 300.0 - Anions, Ion Chromatography - Soluble**

Analyte	Result	Qualifier	RL	MDL	Unit	D	Prepared	Analyzed	Dil Fac
Chloride	779		9.98		mg/Kg			01/08/26 17:38	1

Eurofins Midland

### Client Sample Results

Client: Carmona Resources  
 Project/Site: Sea Snake 35 #004H

Job ID: 880-66744-1  
 SDG: Lea County NM

**Client Sample ID: CS-5 (0.5')**

**Lab Sample ID: 880-66744-5**

Date Collected: 01/07/26 00:00

Matrix: Solid

Date Received: 01/07/26 15:34

**Method: SW846 8021B - Volatile Organic Compounds (GC)**

Analyte	Result	Qualifier	RL	MDL	Unit	D	Prepared	Analyzed	Dil Fac
Benzene	<0.00199	U	0.00199		mg/Kg		01/08/26 12:14	01/09/26 13:03	1
Toluene	<0.00199	U	0.00199		mg/Kg		01/08/26 12:14	01/09/26 13:03	1
Ethylbenzene	<0.00199	U	0.00199		mg/Kg		01/08/26 12:14	01/09/26 13:03	1
m-Xylene & p-Xylene	<0.00398	U	0.00398		mg/Kg		01/08/26 12:14	01/09/26 13:03	1
o-Xylene	<0.00199	U	0.00199		mg/Kg		01/08/26 12:14	01/09/26 13:03	1
Xylenes, Total	<0.00398	U	0.00398		mg/Kg		01/08/26 12:14	01/09/26 13:03	1

Surrogate	%Recovery	Qualifier	Limits	Prepared	Analyzed	Dil Fac
4-Bromofluorobenzene (Surr)	111		70 - 130	01/08/26 12:14	01/09/26 13:03	1
1,4-Difluorobenzene (Surr)	111		70 - 130	01/08/26 12:14	01/09/26 13:03	1

**Method: TAL SOP Total BTEX - Total BTEX Calculation**

Analyte	Result	Qualifier	RL	MDL	Unit	D	Prepared	Analyzed	Dil Fac
Total BTEX	<0.00398	U	0.00398		mg/Kg			01/09/26 13:03	1

**Method: SW846 8015 NM - Diesel Range Organics (DRO) (GC)**

Analyte	Result	Qualifier	RL	MDL	Unit	D	Prepared	Analyzed	Dil Fac
Total TPH	209		50.0		mg/Kg			01/09/26 20:07	1

**Method: SW846 8015B NM - Diesel Range Organics (DRO) (GC)**

Analyte	Result	Qualifier	RL	MDL	Unit	D	Prepared	Analyzed	Dil Fac
Gasoline Range Organics (GRO)-C6-C10	<50.0	U	50.0		mg/Kg		01/07/26 16:24	01/09/26 20:07	1
<b>Diesel Range Organics (Over C10-C28)</b>	209		50.0		mg/Kg		01/07/26 16:24	01/09/26 20:07	1
Oil Range Organics (Over C28-C36)	<50.0	U	50.0		mg/Kg		01/07/26 16:24	01/09/26 20:07	1

Surrogate	%Recovery	Qualifier	Limits	Prepared	Analyzed	Dil Fac
1-Chlorooctane	96		70 - 130	01/07/26 16:24	01/09/26 20:07	1
o-Terphenyl	96		70 - 130	01/07/26 16:24	01/09/26 20:07	1

**Method: EPA 300.0 - Anions, Ion Chromatography - Soluble**

Analyte	Result	Qualifier	RL	MDL	Unit	D	Prepared	Analyzed	Dil Fac
Chloride	807		9.98		mg/Kg			01/09/26 08:56	1

**Client Sample ID: CS-6 (0.5')**

**Lab Sample ID: 880-66744-6**

Date Collected: 01/07/26 00:00

Matrix: Solid

Date Received: 01/07/26 15:34

**Method: SW846 8021B - Volatile Organic Compounds (GC)**

Analyte	Result	Qualifier	RL	MDL	Unit	D	Prepared	Analyzed	Dil Fac
Benzene	<0.00200	U	0.00200		mg/Kg		01/08/26 12:14	01/09/26 13:23	1
Toluene	<0.00200	U	0.00200		mg/Kg		01/08/26 12:14	01/09/26 13:23	1
Ethylbenzene	<0.00200	U	0.00200		mg/Kg		01/08/26 12:14	01/09/26 13:23	1
m-Xylene & p-Xylene	<0.00399	U	0.00399		mg/Kg		01/08/26 12:14	01/09/26 13:23	1
o-Xylene	<0.00200	U	0.00200		mg/Kg		01/08/26 12:14	01/09/26 13:23	1
Xylenes, Total	<0.00399	U	0.00399		mg/Kg		01/08/26 12:14	01/09/26 13:23	1

Surrogate	%Recovery	Qualifier	Limits	Prepared	Analyzed	Dil Fac
4-Bromofluorobenzene (Surr)	97		70 - 130	01/08/26 12:14	01/09/26 13:23	1
1,4-Difluorobenzene (Surr)	98		70 - 130	01/08/26 12:14	01/09/26 13:23	1

Eurofins Midland

### Client Sample Results

Client: Carmona Resources  
 Project/Site: Sea Snake 35 #004H

Job ID: 880-66744-1  
 SDG: Lea County NM

**Client Sample ID: CS-6 (0.5')**

**Lab Sample ID: 880-66744-6**

Date Collected: 01/07/26 00:00

Matrix: Solid

Date Received: 01/07/26 15:34

**Method: TAL SOP Total BTEX - Total BTEX Calculation**

Analyte	Result	Qualifier	RL	MDL	Unit	D	Prepared	Analyzed	Dil Fac
Total BTEX	<0.00399	U	0.00399		mg/Kg			01/09/26 13:23	1

**Method: SW846 8015 NM - Diesel Range Organics (DRO) (GC)**

Analyte	Result	Qualifier	RL	MDL	Unit	D	Prepared	Analyzed	Dil Fac
Total TPH	289		49.8		mg/Kg			01/09/26 20:20	1

**Method: SW846 8015B NM - Diesel Range Organics (DRO) (GC)**

Analyte	Result	Qualifier	RL	MDL	Unit	D	Prepared	Analyzed	Dil Fac
Gasoline Range Organics (GRO)-C6-C10	<49.8	U	49.8		mg/Kg		01/07/26 16:24	01/09/26 20:20	1
Diesel Range Organics (Over C10-C28)	239		49.8		mg/Kg		01/07/26 16:24	01/09/26 20:20	1
Oil Range Organics (Over C28-C36)	50.3		49.8		mg/Kg		01/07/26 16:24	01/09/26 20:20	1
<b>Surrogate</b>	<b>%Recovery</b>	<b>Qualifier</b>	<b>Limits</b>				<b>Prepared</b>	<b>Analyzed</b>	<b>Dil Fac</b>
1-Chlorooctane	101		70 - 130				01/07/26 16:24	01/09/26 20:20	1
o-Terphenyl	100		70 - 130				01/07/26 16:24	01/09/26 20:20	1

**Method: EPA 300.0 - Anions, Ion Chromatography - Soluble**

Analyte	Result	Qualifier	RL	MDL	Unit	D	Prepared	Analyzed	Dil Fac
Chloride	688		9.92		mg/Kg			01/09/26 09:18	1

**Client Sample ID: CS-7 (0.5')**

**Lab Sample ID: 880-66744-7**

Date Collected: 01/07/26 00:00

Matrix: Solid

Date Received: 01/07/26 15:34

**Method: SW846 8021B - Volatile Organic Compounds (GC)**

Analyte	Result	Qualifier	RL	MDL	Unit	D	Prepared	Analyzed	Dil Fac
Benzene	<0.00198	U	0.00198		mg/Kg		01/08/26 12:14	01/09/26 13:44	1
Toluene	<0.00198	U	0.00198		mg/Kg		01/08/26 12:14	01/09/26 13:44	1
Ethylbenzene	<0.00198	U	0.00198		mg/Kg		01/08/26 12:14	01/09/26 13:44	1
m-Xylene & p-Xylene	<0.00396	U	0.00396		mg/Kg		01/08/26 12:14	01/09/26 13:44	1
o-Xylene	<0.00198	U	0.00198		mg/Kg		01/08/26 12:14	01/09/26 13:44	1
Xylenes, Total	<0.00396	U	0.00396		mg/Kg		01/08/26 12:14	01/09/26 13:44	1
<b>Surrogate</b>	<b>%Recovery</b>	<b>Qualifier</b>	<b>Limits</b>				<b>Prepared</b>	<b>Analyzed</b>	<b>Dil Fac</b>
4-Bromofluorobenzene (Surr)	114		70 - 130				01/08/26 12:14	01/09/26 13:44	1
1,4-Difluorobenzene (Surr)	108		70 - 130				01/08/26 12:14	01/09/26 13:44	1

**Method: TAL SOP Total BTEX - Total BTEX Calculation**

Analyte	Result	Qualifier	RL	MDL	Unit	D	Prepared	Analyzed	Dil Fac
Total BTEX	<0.00396	U	0.00396		mg/Kg			01/09/26 13:44	1

**Method: SW846 8015 NM - Diesel Range Organics (DRO) (GC)**

Analyte	Result	Qualifier	RL	MDL	Unit	D	Prepared	Analyzed	Dil Fac
Total TPH	184		49.9		mg/Kg			01/09/26 20:35	1

**Method: SW846 8015B NM - Diesel Range Organics (DRO) (GC)**

Analyte	Result	Qualifier	RL	MDL	Unit	D	Prepared	Analyzed	Dil Fac
Gasoline Range Organics (GRO)-C6-C10	<49.9	U	49.9		mg/Kg		01/07/26 16:24	01/09/26 20:35	1

Eurofins Midland

### Client Sample Results

Client: Carmona Resources  
 Project/Site: Sea Snake 35 #004H

Job ID: 880-66744-1  
 SDG: Lea County NM

**Client Sample ID: CS-7 (0.5')**

**Lab Sample ID: 880-66744-7**

Date Collected: 01/07/26 00:00

Matrix: Solid

Date Received: 01/07/26 15:34

**Method: SW846 8015B NM - Diesel Range Organics (DRO) (GC) (Continued)**

Analyte	Result	Qualifier	RL	MDL	Unit	D	Prepared	Analyzed	Dil Fac
<b>Diesel Range Organics (Over C10-C28)</b>	<b>184</b>		49.9		mg/Kg		01/07/26 16:24	01/09/26 20:35	1
Oil Range Organics (Over C28-C36)	<49.9	U	49.9		mg/Kg		01/07/26 16:24	01/09/26 20:35	1
<b>Surrogate</b>	<b>%Recovery</b>	<b>Qualifier</b>	<b>Limits</b>				<b>Prepared</b>	<b>Analyzed</b>	<b>Dil Fac</b>
1-Chlorooctane	97		70 - 130				01/07/26 16:24	01/09/26 20:35	1
o-Terphenyl	95		70 - 130				01/07/26 16:24	01/09/26 20:35	1

**Method: EPA 300.0 - Anions, Ion Chromatography - Soluble**

Analyte	Result	Qualifier	RL	MDL	Unit	D	Prepared	Analyzed	Dil Fac
<b>Chloride</b>	<b>657</b>		9.94		mg/Kg			01/08/26 18:37	1

**Client Sample ID: CS-8 (0.5')**

**Lab Sample ID: 880-66744-8**

Date Collected: 01/07/26 00:00

Matrix: Solid

Date Received: 01/07/26 15:34

**Method: SW846 8021B - Volatile Organic Compounds (GC)**

Analyte	Result	Qualifier	RL	MDL	Unit	D	Prepared	Analyzed	Dil Fac
Benzene	<0.00201	U	0.00201		mg/Kg		01/08/26 12:14	01/09/26 14:04	1
Toluene	<0.00201	U	0.00201		mg/Kg		01/08/26 12:14	01/09/26 14:04	1
Ethylbenzene	<0.00201	U	0.00201		mg/Kg		01/08/26 12:14	01/09/26 14:04	1
m-Xylene & p-Xylene	<0.00402	U	0.00402		mg/Kg		01/08/26 12:14	01/09/26 14:04	1
o-Xylene	<0.00201	U	0.00201		mg/Kg		01/08/26 12:14	01/09/26 14:04	1
Xylenes, Total	<0.00402	U	0.00402		mg/Kg		01/08/26 12:14	01/09/26 14:04	1
<b>Surrogate</b>	<b>%Recovery</b>	<b>Qualifier</b>	<b>Limits</b>				<b>Prepared</b>	<b>Analyzed</b>	<b>Dil Fac</b>
4-Bromofluorobenzene (Surr)	117		70 - 130				01/08/26 12:14	01/09/26 14:04	1
1,4-Difluorobenzene (Surr)	110		70 - 130				01/08/26 12:14	01/09/26 14:04	1

**Method: TAL SOP Total BTEX - Total BTEX Calculation**

Analyte	Result	Qualifier	RL	MDL	Unit	D	Prepared	Analyzed	Dil Fac
Total BTEX	<0.00402	U	0.00402		mg/Kg			01/09/26 14:04	1

**Method: SW846 8015 NM - Diesel Range Organics (DRO) (GC)**

Analyte	Result	Qualifier	RL	MDL	Unit	D	Prepared	Analyzed	Dil Fac
<b>Total TPH</b>	<b>136</b>		50.0		mg/Kg			01/09/26 20:48	1

**Method: SW846 8015B NM - Diesel Range Organics (DRO) (GC)**

Analyte	Result	Qualifier	RL	MDL	Unit	D	Prepared	Analyzed	Dil Fac
Gasoline Range Organics (GRO)-C6-C10	<50.0	U	50.0		mg/Kg		01/07/26 16:24	01/09/26 20:48	1
<b>Diesel Range Organics (Over C10-C28)</b>	<b>136</b>		50.0		mg/Kg		01/07/26 16:24	01/09/26 20:48	1
Oil Range Organics (Over C28-C36)	<50.0	U	50.0		mg/Kg		01/07/26 16:24	01/09/26 20:48	1
<b>Surrogate</b>	<b>%Recovery</b>	<b>Qualifier</b>	<b>Limits</b>				<b>Prepared</b>	<b>Analyzed</b>	<b>Dil Fac</b>
1-Chlorooctane	103		70 - 130				01/07/26 16:24	01/09/26 20:48	1
o-Terphenyl	100		70 - 130				01/07/26 16:24	01/09/26 20:48	1

**Method: EPA 300.0 - Anions, Ion Chromatography - Soluble**

Analyte	Result	Qualifier	RL	MDL	Unit	D	Prepared	Analyzed	Dil Fac
<b>Chloride</b>	<b>632</b>		9.96		mg/Kg			01/08/26 18:44	1

Eurofins Midland

### Client Sample Results

Client: Carmona Resources  
 Project/Site: Sea Snake 35 #004H

Job ID: 880-66744-1  
 SDG: Lea County NM

**Client Sample ID: CS-9 (0.5')**

**Lab Sample ID: 880-66744-9**

Date Collected: 01/07/26 00:00

Matrix: Solid

Date Received: 01/07/26 15:34

**Method: SW846 8021B - Volatile Organic Compounds (GC)**

Analyte	Result	Qualifier	RL	MDL	Unit	D	Prepared	Analyzed	Dil Fac
Benzene	<0.00202	U	0.00202		mg/Kg		01/08/26 12:14	01/09/26 14:25	1
Toluene	<0.00202	U	0.00202		mg/Kg		01/08/26 12:14	01/09/26 14:25	1
Ethylbenzene	<0.00202	U	0.00202		mg/Kg		01/08/26 12:14	01/09/26 14:25	1
m-Xylene & p-Xylene	<0.00403	U	0.00403		mg/Kg		01/08/26 12:14	01/09/26 14:25	1
o-Xylene	<0.00202	U	0.00202		mg/Kg		01/08/26 12:14	01/09/26 14:25	1
Xylenes, Total	<0.00403	U	0.00403		mg/Kg		01/08/26 12:14	01/09/26 14:25	1

Surrogate	%Recovery	Qualifier	Limits	Prepared	Analyzed	Dil Fac
4-Bromofluorobenzene (Surr)	112		70 - 130	01/08/26 12:14	01/09/26 14:25	1
1,4-Difluorobenzene (Surr)	111		70 - 130	01/08/26 12:14	01/09/26 14:25	1

**Method: TAL SOP Total BTEX - Total BTEX Calculation**

Analyte	Result	Qualifier	RL	MDL	Unit	D	Prepared	Analyzed	Dil Fac
Total BTEX	<0.00403	U	0.00403		mg/Kg			01/09/26 14:25	1

**Method: SW846 8015 NM - Diesel Range Organics (DRO) (GC)**

Analyte	Result	Qualifier	RL	MDL	Unit	D	Prepared	Analyzed	Dil Fac
Total TPH	195		49.9		mg/Kg			01/09/26 21:16	1

**Method: SW846 8015B NM - Diesel Range Organics (DRO) (GC)**

Analyte	Result	Qualifier	RL	MDL	Unit	D	Prepared	Analyzed	Dil Fac
Gasoline Range Organics (GRO)-C6-C10	<49.9	U	49.9		mg/Kg		01/07/26 16:24	01/09/26 21:16	1
Diesel Range Organics (Over C10-C28)	195		49.9		mg/Kg		01/07/26 16:24	01/09/26 21:16	1
Oil Range Organics (Over C28-C36)	<49.9	U	49.9		mg/Kg		01/07/26 16:24	01/09/26 21:16	1

Surrogate	%Recovery	Qualifier	Limits	Prepared	Analyzed	Dil Fac
1-Chlorooctane	116		70 - 130	01/07/26 16:24	01/09/26 21:16	1
o-Terphenyl	100		70 - 130	01/07/26 16:24	01/09/26 21:16	1

**Method: EPA 300.0 - Anions, Ion Chromatography - Soluble**

Analyte	Result	Qualifier	RL	MDL	Unit	D	Prepared	Analyzed	Dil Fac
Chloride	639		10.0		mg/Kg			01/08/26 18:51	1

**Client Sample ID: CS-10 (0.5')**

**Lab Sample ID: 880-66744-10**

Date Collected: 01/07/26 00:00

Matrix: Solid

Date Received: 01/07/26 15:34

**Method: SW846 8021B - Volatile Organic Compounds (GC)**

Analyte	Result	Qualifier	RL	MDL	Unit	D	Prepared	Analyzed	Dil Fac
Benzene	<0.00199	U	0.00199		mg/Kg		01/08/26 12:14	01/09/26 14:45	1
Toluene	<0.00199	U	0.00199		mg/Kg		01/08/26 12:14	01/09/26 14:45	1
Ethylbenzene	<0.00199	U	0.00199		mg/Kg		01/08/26 12:14	01/09/26 14:45	1
m-Xylene & p-Xylene	<0.00398	U	0.00398		mg/Kg		01/08/26 12:14	01/09/26 14:45	1
o-Xylene	<0.00199	U	0.00199		mg/Kg		01/08/26 12:14	01/09/26 14:45	1
Xylenes, Total	<0.00398	U	0.00398		mg/Kg		01/08/26 12:14	01/09/26 14:45	1

Surrogate	%Recovery	Qualifier	Limits	Prepared	Analyzed	Dil Fac
4-Bromofluorobenzene (Surr)	93		70 - 130	01/08/26 12:14	01/09/26 14:45	1
1,4-Difluorobenzene (Surr)	91		70 - 130	01/08/26 12:14	01/09/26 14:45	1

Eurofins Midland

### Client Sample Results

Client: Carmona Resources  
 Project/Site: Sea Snake 35 #004H

Job ID: 880-66744-1  
 SDG: Lea County NM

**Client Sample ID: CS-10 (0.5')**

**Lab Sample ID: 880-66744-10**

Date Collected: 01/07/26 00:00

Matrix: Solid

Date Received: 01/07/26 15:34

**Method: TAL SOP Total BTEX - Total BTEX Calculation**

Analyte	Result	Qualifier	RL	MDL	Unit	D	Prepared	Analyzed	Dil Fac
Total BTEX	<0.00398	U	0.00398		mg/Kg			01/09/26 14:45	1

**Method: SW846 8015 NM - Diesel Range Organics (DRO) (GC)**

Analyte	Result	Qualifier	RL	MDL	Unit	D	Prepared	Analyzed	Dil Fac
Total TPH	118		49.8		mg/Kg			01/09/26 21:30	1

**Method: SW846 8015B NM - Diesel Range Organics (DRO) (GC)**

Analyte	Result	Qualifier	RL	MDL	Unit	D	Prepared	Analyzed	Dil Fac
Gasoline Range Organics (GRO)-C6-C10	<49.8	U	49.8		mg/Kg		01/07/26 16:24	01/09/26 21:30	1
<b>Diesel Range Organics (Over C10-C28)</b>	118		49.8		mg/Kg		01/07/26 16:24	01/09/26 21:30	1
Oil Range Organics (Over C28-C36)	<49.8	U	49.8		mg/Kg		01/07/26 16:24	01/09/26 21:30	1
<b>Surrogate</b>	<b>%Recovery</b>	<b>Qualifier</b>	<b>Limits</b>				<b>Prepared</b>	<b>Analyzed</b>	<b>Dil Fac</b>
1-Chlorooctane	106		70 - 130				01/07/26 16:24	01/09/26 21:30	1
o-Terphenyl	107		70 - 130				01/07/26 16:24	01/09/26 21:30	1

**Method: EPA 300.0 - Anions, Ion Chromatography - Soluble**

Analyte	Result	Qualifier	RL	MDL	Unit	D	Prepared	Analyzed	Dil Fac
Chloride	659		10.1		mg/Kg			01/08/26 19:12	1

**Client Sample ID: CS-11 (0.5')**

**Lab Sample ID: 880-66744-11**

Date Collected: 01/07/26 00:00

Matrix: Solid

Date Received: 01/07/26 15:34

**Method: SW846 8021B - Volatile Organic Compounds (GC)**

Analyte	Result	Qualifier	RL	MDL	Unit	D	Prepared	Analyzed	Dil Fac
Benzene	<0.00200	U	0.00200		mg/Kg		01/08/26 12:14	01/09/26 17:10	1
Toluene	<0.00200	U	0.00200		mg/Kg		01/08/26 12:14	01/09/26 17:10	1
Ethylbenzene	<0.00200	U	0.00200		mg/Kg		01/08/26 12:14	01/09/26 17:10	1
m-Xylene & p-Xylene	<0.00399	U	0.00399		mg/Kg		01/08/26 12:14	01/09/26 17:10	1
o-Xylene	<0.00200	U	0.00200		mg/Kg		01/08/26 12:14	01/09/26 17:10	1
Xylenes, Total	<0.00399	U	0.00399		mg/Kg		01/08/26 12:14	01/09/26 17:10	1
<b>Surrogate</b>	<b>%Recovery</b>	<b>Qualifier</b>	<b>Limits</b>				<b>Prepared</b>	<b>Analyzed</b>	<b>Dil Fac</b>
4-Bromofluorobenzene (Surr)	113		70 - 130				01/08/26 12:14	01/09/26 17:10	1
1,4-Difluorobenzene (Surr)	111		70 - 130				01/08/26 12:14	01/09/26 17:10	1

**Method: TAL SOP Total BTEX - Total BTEX Calculation**

Analyte	Result	Qualifier	RL	MDL	Unit	D	Prepared	Analyzed	Dil Fac
Total BTEX	<0.00399	U	0.00399		mg/Kg			01/09/26 17:10	1

**Method: SW846 8015 NM - Diesel Range Organics (DRO) (GC)**

Analyte	Result	Qualifier	RL	MDL	Unit	D	Prepared	Analyzed	Dil Fac
Total TPH	256		49.9		mg/Kg			01/09/26 21:44	1

**Method: SW846 8015B NM - Diesel Range Organics (DRO) (GC)**

Analyte	Result	Qualifier	RL	MDL	Unit	D	Prepared	Analyzed	Dil Fac
Gasoline Range Organics (GRO)-C6-C10	<49.9	U	49.9		mg/Kg		01/07/26 16:24	01/09/26 21:44	1
<b>Diesel Range Organics (Over C10-C28)</b>	256		49.9		mg/Kg		01/07/26 16:24	01/09/26 21:44	1

Eurofins Midland

### Client Sample Results

Client: Carmona Resources  
 Project/Site: Sea Snake 35 #004H

Job ID: 880-66744-1  
 SDG: Lea County NM

**Client Sample ID: CS-11 (0.5')**

**Lab Sample ID: 880-66744-11**

Date Collected: 01/07/26 00:00

Matrix: Solid

Date Received: 01/07/26 15:34

**Method: SW846 8015B NM - Diesel Range Organics (DRO) (GC) (Continued)**

Analyte	Result	Qualifier	RL	MDL	Unit	D	Prepared	Analyzed	Dil Fac
Oil Range Organics (Over C28-C36)	<49.9	U	49.9		mg/Kg		01/07/26 16:24	01/09/26 21:44	1
Surrogate	%Recovery	Qualifier	Limits				Prepared	Analyzed	Dil Fac
1-Chlorooctane	107		70 - 130				01/07/26 16:24	01/09/26 21:44	1
o-Terphenyl	107		70 - 130				01/07/26 16:24	01/09/26 21:44	1

**Method: EPA 300.0 - Anions, Ion Chromatography - Soluble**

Analyte	Result	Qualifier	RL	MDL	Unit	D	Prepared	Analyzed	Dil Fac
Chloride	700		9.94		mg/Kg			01/08/26 19:19	1

- 1
- 2
- 3
- 4
- 5
- 6
- 7
- 8
- 9
- 10
- 11
- 12
- 13
- 14

## Surrogate Summary

Client: Carmona Resources  
Project/Site: Sea Snake 35 #004H

Job ID: 880-66744-1  
SDG: Lea County NM

## Method: 8021B - Volatile Organic Compounds (GC)

Matrix: Solid

Prep Type: Total/NA

Lab Sample ID	Client Sample ID	Percent Surrogate Recovery (Acceptance Limits)	
		BFB1 (70-130)	DFBZ1 (70-130)
880-66744-1	CS-1 (0.5')	79	78
880-66744-1 MS	CS-1 (0.5')	102	103
880-66744-1 MSD	CS-1 (0.5')	111	123
880-66744-2	CS-2 (0.5')	107	108
880-66744-3	CS-3 (0.5')	77	110
880-66744-4	CS-4 (0.5')	108	110
880-66744-5	CS-5 (0.5')	111	111
880-66744-6	CS-6 (0.5')	97	98
880-66744-7	CS-7 (0.5')	114	108
880-66744-8	CS-8 (0.5')	117	110
880-66744-9	CS-9 (0.5')	112	111
880-66744-10	CS-10 (0.5')	93	91
880-66744-11	CS-11 (0.5')	113	111
LCS 880-128496/1-A	Lab Control Sample	101	103
LCSD 880-128496/2-A	Lab Control Sample Dup	101	104
MB 880-128496/5-A	Method Blank	105	98
<b>Surrogate Legend</b>			
BFB = 4-Bromofluorobenzene (Surr)			
DFBZ = 1,4-Difluorobenzene (Surr)			

## Method: 8015B NM - Diesel Range Organics (DRO) (GC)

Matrix: Solid

Prep Type: Total/NA

Lab Sample ID	Client Sample ID	Percent Surrogate Recovery (Acceptance Limits)	
		1CO1 (70-130)	OTPH1 (70-130)
880-66744-1	CS-1 (0.5')	121	128
880-66744-2	CS-2 (0.5')	110	110
880-66744-3	CS-3 (0.5')	103	102
880-66744-4	CS-4 (0.5')	100	100
880-66744-5	CS-5 (0.5')	96	96
880-66744-6	CS-6 (0.5')	101	100
880-66744-7	CS-7 (0.5')	97	95
880-66744-8	CS-8 (0.5')	103	100
880-66744-9	CS-9 (0.5')	116	100
880-66744-10	CS-10 (0.5')	106	107
880-66744-11	CS-11 (0.5')	107	107
890-9314-A-20-B MS	Matrix Spike	125	108
890-9314-A-20-C MSD	Matrix Spike Duplicate	118	109
LCS 880-128406/2-A	Lab Control Sample	148 S1+	138 S1+
LCSD 880-128406/3-A	Lab Control Sample Dup	140 S1+	130
MB 880-128406/1-A	Method Blank	112	114
<b>Surrogate Legend</b>			
1CO = 1-Chlorooctane			
OTPH = o-Terphenyl			

Eurofins Midland

### QC Sample Results

Client: Carmona Resources  
 Project/Site: Sea Snake 35 #004H

Job ID: 880-66744-1  
 SDG: Lea County NM

#### Method: 8021B - Volatile Organic Compounds (GC)

Lab Sample ID: MB 880-128496/5-A  
 Matrix: Solid  
 Analysis Batch: 128554

Client Sample ID: Method Blank  
 Prep Type: Total/NA  
 Prep Batch: 128496

Analyte	MB Result	MB Qualifier	RL	MDL	Unit	D	Prepared	Analyzed	Dil Fac
Benzene	<0.00200	U	0.00200		mg/Kg		01/08/26 12:14	01/09/26 11:20	1
Toluene	<0.00200	U	0.00200		mg/Kg		01/08/26 12:14	01/09/26 11:20	1
Ethylbenzene	<0.00200	U	0.00200		mg/Kg		01/08/26 12:14	01/09/26 11:20	1
m-Xylene & p-Xylene	<0.00400	U	0.00400		mg/Kg		01/08/26 12:14	01/09/26 11:20	1
o-Xylene	<0.00200	U	0.00200		mg/Kg		01/08/26 12:14	01/09/26 11:20	1
Xylenes, Total	<0.00400	U	0.00400		mg/Kg		01/08/26 12:14	01/09/26 11:20	1

Surrogate	MB %Recovery	MB Qualifier	Limits	Prepared	Analyzed	Dil Fac
4-Bromofluorobenzene (Surr)	105		70 - 130	01/08/26 12:14	01/09/26 11:20	1
1,4-Difluorobenzene (Surr)	98		70 - 130	01/08/26 12:14	01/09/26 11:20	1

Lab Sample ID: LCS 880-128496/1-A  
 Matrix: Solid  
 Analysis Batch: 128554

Client Sample ID: Lab Control Sample  
 Prep Type: Total/NA  
 Prep Batch: 128496

Analyte	Spike Added	LCS Result	LCS Qualifier	Unit	D	%Rec	%Rec Limits
Benzene	0.100	0.09098		mg/Kg		91	70 - 130
Toluene	0.100	0.09196		mg/Kg		92	70 - 130
Ethylbenzene	0.100	0.1019		mg/Kg		102	70 - 130
m-Xylene & p-Xylene	0.200	0.1986		mg/Kg		99	70 - 130
o-Xylene	0.100	0.09562		mg/Kg		96	70 - 130

Surrogate	LCS %Recovery	LCS Qualifier	Limits
4-Bromofluorobenzene (Surr)	101		70 - 130
1,4-Difluorobenzene (Surr)	103		70 - 130

Lab Sample ID: LCSD 880-128496/2-A  
 Matrix: Solid  
 Analysis Batch: 128554

Client Sample ID: Lab Control Sample Dup  
 Prep Type: Total/NA  
 Prep Batch: 128496

Analyte	Spike Added	LCSD Result	LCSD Qualifier	Unit	D	%Rec	%Rec Limits	RPD	Limit
Benzene	0.100	0.08857		mg/Kg		89	70 - 130	3	35
Toluene	0.100	0.08824		mg/Kg		88	70 - 130	4	35
Ethylbenzene	0.100	0.09716		mg/Kg		97	70 - 130	5	35
m-Xylene & p-Xylene	0.200	0.1915		mg/Kg		96	70 - 130	4	35
o-Xylene	0.100	0.09256		mg/Kg		93	70 - 130	3	35

Surrogate	LCSD %Recovery	LCSD Qualifier	Limits
4-Bromofluorobenzene (Surr)	101		70 - 130
1,4-Difluorobenzene (Surr)	104		70 - 130

Lab Sample ID: 880-66744-1 MS  
 Matrix: Solid  
 Analysis Batch: 128554

Client Sample ID: CS-1 (0.5')  
 Prep Type: Total/NA  
 Prep Batch: 128496

Analyte	Sample Result	Sample Qualifier	Spike Added	MS Result	MS Qualifier	Unit	D	%Rec	%Rec Limits
Benzene	<0.00200	U	0.100	0.08368		mg/Kg		84	70 - 130
Toluene	<0.00200	U	0.100	0.08069		mg/Kg		81	70 - 130

Eurofins Midland

### QC Sample Results

Client: Carmona Resources  
 Project/Site: Sea Snake 35 #004H

Job ID: 880-66744-1  
 SDG: Lea County NM

#### Method: 8021B - Volatile Organic Compounds (GC) (Continued)

Lab Sample ID: 880-66744-1 MS  
 Matrix: Solid  
 Analysis Batch: 128554

Client Sample ID: CS-1 (0.5')  
 Prep Type: Total/NA  
 Prep Batch: 128496

Analyte	Sample	Sample	Spike	MS	MS	Unit	D	%Rec	%Rec
	Result	Qualifier		Added	Result				
Ethylbenzene	<0.00200	U	0.100	0.08353		mg/Kg		84	70 - 130
m-Xylene & p-Xylene	<0.00399	U	0.200	0.1643		mg/Kg		82	70 - 130
o-Xylene	<0.00200	U	0.100	0.07957		mg/Kg		80	70 - 130

Surrogate	MS	MS	Limits
	%Recovery	Qualifier	
4-Bromofluorobenzene (Surr)	102		70 - 130
1,4-Difluorobenzene (Surr)	103		70 - 130

Lab Sample ID: 880-66744-1 MSD  
 Matrix: Solid  
 Analysis Batch: 128554

Client Sample ID: CS-1 (0.5')  
 Prep Type: Total/NA  
 Prep Batch: 128496

Analyte	Sample	Sample	Spike	MSD	MSD	Unit	D	%Rec	%Rec	RPD	Limit
	Result	Qualifier		Added	Result						
Benzene	<0.00200	U	0.100	0.08691		mg/Kg		87	70 - 130	4	35
Toluene	<0.00200	U	0.100	0.08726		mg/Kg		87	70 - 130	8	35
Ethylbenzene	<0.00200	U	0.100	0.08984		mg/Kg		90	70 - 130	7	35
m-Xylene & p-Xylene	<0.00399	U	0.200	0.1760		mg/Kg		88	70 - 130	7	35
o-Xylene	<0.00200	U	0.100	0.08393		mg/Kg		84	70 - 130	5	35

Surrogate	MSD	MSD	Limits
	%Recovery	Qualifier	
4-Bromofluorobenzene (Surr)	111		70 - 130
1,4-Difluorobenzene (Surr)	123		70 - 130

#### Method: 8015B NM - Diesel Range Organics (DRO) (GC)

Lab Sample ID: MB 880-128406/1-A  
 Matrix: Solid  
 Analysis Batch: 128569

Client Sample ID: Method Blank  
 Prep Type: Total/NA  
 Prep Batch: 128406

Analyte	MB	MB	RL	MDL	Unit	D	Prepared	Analyzed	Dil Fac
	Result	Qualifier							
Gasoline Range Organics (GRO)-C6-C10	<50.0	U	50.0		mg/Kg		01/07/26 16:24	01/09/26 15:34	1
Diesel Range Organics (Over C10-C28)	<50.0	U	50.0		mg/Kg		01/07/26 16:24	01/09/26 15:34	1
Oil Range Organics (Over C28-C36)	<50.0	U	50.0		mg/Kg		01/07/26 16:24	01/09/26 15:34	1

Surrogate	MB	MB	Limits	Prepared	Analyzed	Dil Fac
	%Recovery	Qualifier				
1-Chlorooctane	112		70 - 130	01/07/26 16:24	01/09/26 15:34	1
o-Terphenyl	114		70 - 130	01/07/26 16:24	01/09/26 15:34	1

Lab Sample ID: LCS 880-128406/2-A  
 Matrix: Solid  
 Analysis Batch: 128569

Client Sample ID: Lab Control Sample  
 Prep Type: Total/NA  
 Prep Batch: 128406

Analyte	Spike	LCS	LCS	Unit	D	%Rec	%Rec
Gasoline Range Organics (GRO)-C6-C10	1000	838.8		mg/Kg		84	70 - 130
Diesel Range Organics (Over C10-C28)	1000	1214		mg/Kg		121	70 - 130

Eurofins Midland

### QC Sample Results

Client: Carmona Resources  
 Project/Site: Sea Snake 35 #004H

Job ID: 880-66744-1  
 SDG: Lea County NM

#### Method: 8015B NM - Diesel Range Organics (DRO) (GC) (Continued)

**Lab Sample ID: LCS 880-128406/2-A**  
**Matrix: Solid**  
**Analysis Batch: 128569**

**Client Sample ID: Lab Control Sample**  
**Prep Type: Total/NA**  
**Prep Batch: 128406**

Surrogate	LCS		Limits
	%Recovery	Qualifier	
1-Chlorooctane	148	S1+	70 - 130
o-Terphenyl	138	S1+	70 - 130

**Lab Sample ID: LCSD 880-128406/3-A**  
**Matrix: Solid**  
**Analysis Batch: 128569**

**Client Sample ID: Lab Control Sample Dup**  
**Prep Type: Total/NA**  
**Prep Batch: 128406**

Analyte	Spike Added	LCSD Result	LCSD Qualifier	Unit	D	%Rec	%Rec		RPD	Limit
							Limits	RPD		
Gasoline Range Organics (GRO)-C6-C10	1000	918.9		mg/Kg		92	70 - 130	9		20
Diesel Range Organics (Over C10-C28)	1000	1139		mg/Kg		114	70 - 130	6		20

Surrogate	LCSD		Limits
	%Recovery	Qualifier	
1-Chlorooctane	140	S1+	70 - 130
o-Terphenyl	130		70 - 130

**Lab Sample ID: 890-9314-A-20-B MS**  
**Matrix: Solid**  
**Analysis Batch: 128569**

**Client Sample ID: Matrix Spike**  
**Prep Type: Total/NA**  
**Prep Batch: 128406**

Analyte	Sample Result	Sample Qualifier	Spike Added	MS Result	MS Qualifier	Unit	D	%Rec	%Rec		RPD	Limit
									Limits	RPD		
Gasoline Range Organics (GRO)-C6-C10	<49.9	U	999	840.4		mg/Kg		84	70 - 130			
Diesel Range Organics (Over C10-C28)	<49.9	U	999	1048		mg/Kg		105	70 - 130			

Surrogate	MS		Limits
	%Recovery	Qualifier	
1-Chlorooctane	125		70 - 130
o-Terphenyl	108		70 - 130

**Lab Sample ID: 890-9314-A-20-C MSD**  
**Matrix: Solid**  
**Analysis Batch: 128569**

**Client Sample ID: Matrix Spike Duplicate**  
**Prep Type: Total/NA**  
**Prep Batch: 128406**

Analyte	Sample Result	Sample Qualifier	Spike Added	MSD Result	MSD Qualifier	Unit	D	%Rec	%Rec		RPD	Limit
									Limits	RPD		
Gasoline Range Organics (GRO)-C6-C10	<49.9	U	999	1006		mg/Kg		101	70 - 130	18		20
Diesel Range Organics (Over C10-C28)	<49.9	U	999	1039		mg/Kg		104	70 - 130	1		20

Surrogate	MSD		Limits
	%Recovery	Qualifier	
1-Chlorooctane	118		70 - 130
o-Terphenyl	109		70 - 130

### QC Sample Results

Client: Carmona Resources  
 Project/Site: Sea Snake 35 #004H

Job ID: 880-66744-1  
 SDG: Lea County NM

#### Method: 300.0 - Anions, Ion Chromatography

Lab Sample ID: MB 880-128420/1-A  
 Matrix: Solid  
 Analysis Batch: 128486

Client Sample ID: Method Blank  
 Prep Type: Soluble

Analyte	MB Result	MB Qualifier	RL	MDL	Unit	D	Prepared	Analyzed	Dil Fac
Chloride	<10.0	U	10.0		mg/Kg			01/08/26 14:02	1

Lab Sample ID: LCS 880-128420/2-A  
 Matrix: Solid  
 Analysis Batch: 128486

Client Sample ID: Lab Control Sample  
 Prep Type: Soluble

Analyte	Spike Added	LCS Result	LCS Qualifier	Unit	D	%Rec	%Rec Limits
Chloride	250	253.6		mg/Kg		101	90 - 110

Lab Sample ID: LCSD 880-128420/3-A  
 Matrix: Solid  
 Analysis Batch: 128486

Client Sample ID: Lab Control Sample Dup  
 Prep Type: Soluble

Analyte	Spike Added	LCSD Result	LCSD Qualifier	Unit	D	%Rec	%Rec Limits	RPD	RPD Limit
Chloride	250	255.2		mg/Kg		102	90 - 110	1	20

Lab Sample ID: 880-66668-A-31-D MS  
 Matrix: Solid  
 Analysis Batch: 128486

Client Sample ID: Matrix Spike  
 Prep Type: Soluble

Analyte	Sample Result	Sample Qualifier	Spike Added	MS Result	MS Qualifier	Unit	D	%Rec	%Rec Limits
Chloride	3370	F1	1260	4826	F1	mg/Kg		116	90 - 110

Lab Sample ID: 880-66668-A-31-E MSD  
 Matrix: Solid  
 Analysis Batch: 128486

Client Sample ID: Matrix Spike Duplicate  
 Prep Type: Soluble

Analyte	Sample Result	Sample Qualifier	Spike Added	MSD Result	MSD Qualifier	Unit	D	%Rec	%Rec Limits	RPD	RPD Limit
Chloride	3370	F1	1260	4833	F1	mg/Kg		117	90 - 110	0	20

Lab Sample ID: MB 880-128488/1-A  
 Matrix: Solid  
 Analysis Batch: 128493

Client Sample ID: Method Blank  
 Prep Type: Soluble

Analyte	MB Result	MB Qualifier	RL	MDL	Unit	D	Prepared	Analyzed	Dil Fac
Chloride	<10.0	U	10.0		mg/Kg			01/08/26 18:13	1

Lab Sample ID: LCS 880-128488/2-A  
 Matrix: Solid  
 Analysis Batch: 128493

Client Sample ID: Lab Control Sample  
 Prep Type: Soluble

Analyte	Spike Added	LCS Result	LCS Qualifier	Unit	D	%Rec	%Rec Limits
Chloride	250	264.6		mg/Kg		106	90 - 110

Lab Sample ID: LCSD 880-128488/3-A  
 Matrix: Solid  
 Analysis Batch: 128493

Client Sample ID: Lab Control Sample Dup  
 Prep Type: Soluble

Analyte	Spike Added	LCSD Result	LCSD Qualifier	Unit	D	%Rec	%Rec Limits	RPD	RPD Limit
Chloride	250	270.1		mg/Kg		108	90 - 110	2	20

Eurofins Midland

### QC Sample Results

Client: Carmona Resources  
 Project/Site: Sea Snake 35 #004H

Job ID: 880-66744-1  
 SDG: Lea County NM

**Method: 300.0 - Anions, Ion Chromatography**

**Lab Sample ID: 880-66744-5 MS**  
**Matrix: Solid**  
**Analysis Batch: 128493**

**Client Sample ID: CS-5 (0.5')**  
**Prep Type: Soluble**

Analyte	Sample Result	Sample Qualifier	Spike Added	MS Result	MS Qualifier	Unit	D	%Rec	%Rec Limits
Chloride	807		250	1062		mg/Kg		102	90 - 110

**Lab Sample ID: 880-66744-5 MSD**  
**Matrix: Solid**  
**Analysis Batch: 128493**

**Client Sample ID: CS-5 (0.5')**  
**Prep Type: Soluble**

Analyte	Sample Result	Sample Qualifier	Spike Added	MSD Result	MSD Qualifier	Unit	D	%Rec	%Rec Limits	RPD	RPD Limit
Chloride	807		250	1070		mg/Kg		105	90 - 110	1	20

- 1
- 2
- 3
- 4
- 5
- 6
- 7
- 8
- 9
- 10
- 11
- 12
- 13
- 14

## QC Association Summary

Client: Carmona Resources  
 Project/Site: Sea Snake 35 #004H

Job ID: 880-66744-1  
 SDG: Lea County NM

## GC VOA

## Prep Batch: 128496

Lab Sample ID	Client Sample ID	Prep Type	Matrix	Method	Prep Batch
880-66744-1	CS-1 (0.5')	Total/NA	Solid	5035	
880-66744-2	CS-2 (0.5')	Total/NA	Solid	5035	
880-66744-3	CS-3 (0.5')	Total/NA	Solid	5035	
880-66744-4	CS-4 (0.5')	Total/NA	Solid	5035	
880-66744-5	CS-5 (0.5')	Total/NA	Solid	5035	
880-66744-6	CS-6 (0.5')	Total/NA	Solid	5035	
880-66744-7	CS-7 (0.5')	Total/NA	Solid	5035	
880-66744-8	CS-8 (0.5')	Total/NA	Solid	5035	
880-66744-9	CS-9 (0.5')	Total/NA	Solid	5035	
880-66744-10	CS-10 (0.5')	Total/NA	Solid	5035	
880-66744-11	CS-11 (0.5')	Total/NA	Solid	5035	
MB 880-128496/5-A	Method Blank	Total/NA	Solid	5035	
LCS 880-128496/1-A	Lab Control Sample	Total/NA	Solid	5035	
LCSD 880-128496/2-A	Lab Control Sample Dup	Total/NA	Solid	5035	
880-66744-1 MS	CS-1 (0.5')	Total/NA	Solid	5035	
880-66744-1 MSD	CS-1 (0.5')	Total/NA	Solid	5035	

## Analysis Batch: 128554

Lab Sample ID	Client Sample ID	Prep Type	Matrix	Method	Prep Batch
880-66744-1	CS-1 (0.5')	Total/NA	Solid	8021B	128496
880-66744-2	CS-2 (0.5')	Total/NA	Solid	8021B	128496
880-66744-3	CS-3 (0.5')	Total/NA	Solid	8021B	128496
880-66744-4	CS-4 (0.5')	Total/NA	Solid	8021B	128496
880-66744-5	CS-5 (0.5')	Total/NA	Solid	8021B	128496
880-66744-6	CS-6 (0.5')	Total/NA	Solid	8021B	128496
880-66744-7	CS-7 (0.5')	Total/NA	Solid	8021B	128496
880-66744-8	CS-8 (0.5')	Total/NA	Solid	8021B	128496
880-66744-9	CS-9 (0.5')	Total/NA	Solid	8021B	128496
880-66744-10	CS-10 (0.5')	Total/NA	Solid	8021B	128496
880-66744-11	CS-11 (0.5')	Total/NA	Solid	8021B	128496
MB 880-128496/5-A	Method Blank	Total/NA	Solid	8021B	128496
LCS 880-128496/1-A	Lab Control Sample	Total/NA	Solid	8021B	128496
LCSD 880-128496/2-A	Lab Control Sample Dup	Total/NA	Solid	8021B	128496
880-66744-1 MS	CS-1 (0.5')	Total/NA	Solid	8021B	128496
880-66744-1 MSD	CS-1 (0.5')	Total/NA	Solid	8021B	128496

## Analysis Batch: 128787

Lab Sample ID	Client Sample ID	Prep Type	Matrix	Method	Prep Batch
880-66744-1	CS-1 (0.5')	Total/NA	Solid	Total BTEX	
880-66744-2	CS-2 (0.5')	Total/NA	Solid	Total BTEX	
880-66744-3	CS-3 (0.5')	Total/NA	Solid	Total BTEX	
880-66744-4	CS-4 (0.5')	Total/NA	Solid	Total BTEX	
880-66744-5	CS-5 (0.5')	Total/NA	Solid	Total BTEX	
880-66744-6	CS-6 (0.5')	Total/NA	Solid	Total BTEX	
880-66744-7	CS-7 (0.5')	Total/NA	Solid	Total BTEX	
880-66744-8	CS-8 (0.5')	Total/NA	Solid	Total BTEX	
880-66744-9	CS-9 (0.5')	Total/NA	Solid	Total BTEX	
880-66744-10	CS-10 (0.5')	Total/NA	Solid	Total BTEX	
880-66744-11	CS-11 (0.5')	Total/NA	Solid	Total BTEX	

Eurofins Midland

## QC Association Summary

Client: Carmona Resources  
 Project/Site: Sea Snake 35 #004H

Job ID: 880-66744-1  
 SDG: Lea County NM

## GC Semi VOA

## Prep Batch: 128406

Lab Sample ID	Client Sample ID	Prep Type	Matrix	Method	Prep Batch
880-66744-1	CS-1 (0.5')	Total/NA	Solid	8015NM Prep	
880-66744-2	CS-2 (0.5')	Total/NA	Solid	8015NM Prep	
880-66744-3	CS-3 (0.5')	Total/NA	Solid	8015NM Prep	
880-66744-4	CS-4 (0.5')	Total/NA	Solid	8015NM Prep	
880-66744-5	CS-5 (0.5')	Total/NA	Solid	8015NM Prep	
880-66744-6	CS-6 (0.5')	Total/NA	Solid	8015NM Prep	
880-66744-7	CS-7 (0.5')	Total/NA	Solid	8015NM Prep	
880-66744-8	CS-8 (0.5')	Total/NA	Solid	8015NM Prep	
880-66744-9	CS-9 (0.5')	Total/NA	Solid	8015NM Prep	
880-66744-10	CS-10 (0.5')	Total/NA	Solid	8015NM Prep	
880-66744-11	CS-11 (0.5')	Total/NA	Solid	8015NM Prep	
MB 880-128406/1-A	Method Blank	Total/NA	Solid	8015NM Prep	
LCS 880-128406/2-A	Lab Control Sample	Total/NA	Solid	8015NM Prep	
LCSD 880-128406/3-A	Lab Control Sample Dup	Total/NA	Solid	8015NM Prep	
890-9314-A-20-B MS	Matrix Spike	Total/NA	Solid	8015NM Prep	
890-9314-A-20-C MSD	Matrix Spike Duplicate	Total/NA	Solid	8015NM Prep	

## Analysis Batch: 128569

Lab Sample ID	Client Sample ID	Prep Type	Matrix	Method	Prep Batch
880-66744-1	CS-1 (0.5')	Total/NA	Solid	8015B NM	128406
880-66744-2	CS-2 (0.5')	Total/NA	Solid	8015B NM	128406
880-66744-3	CS-3 (0.5')	Total/NA	Solid	8015B NM	128406
880-66744-4	CS-4 (0.5')	Total/NA	Solid	8015B NM	128406
880-66744-5	CS-5 (0.5')	Total/NA	Solid	8015B NM	128406
880-66744-6	CS-6 (0.5')	Total/NA	Solid	8015B NM	128406
880-66744-7	CS-7 (0.5')	Total/NA	Solid	8015B NM	128406
880-66744-8	CS-8 (0.5')	Total/NA	Solid	8015B NM	128406
880-66744-9	CS-9 (0.5')	Total/NA	Solid	8015B NM	128406
880-66744-10	CS-10 (0.5')	Total/NA	Solid	8015B NM	128406
880-66744-11	CS-11 (0.5')	Total/NA	Solid	8015B NM	128406
MB 880-128406/1-A	Method Blank	Total/NA	Solid	8015B NM	128406
LCS 880-128406/2-A	Lab Control Sample	Total/NA	Solid	8015B NM	128406
LCSD 880-128406/3-A	Lab Control Sample Dup	Total/NA	Solid	8015B NM	128406
890-9314-A-20-B MS	Matrix Spike	Total/NA	Solid	8015B NM	128406
890-9314-A-20-C MSD	Matrix Spike Duplicate	Total/NA	Solid	8015B NM	128406

## Analysis Batch: 128813

Lab Sample ID	Client Sample ID	Prep Type	Matrix	Method	Prep Batch
880-66744-1	CS-1 (0.5')	Total/NA	Solid	8015 NM	
880-66744-2	CS-2 (0.5')	Total/NA	Solid	8015 NM	
880-66744-3	CS-3 (0.5')	Total/NA	Solid	8015 NM	
880-66744-4	CS-4 (0.5')	Total/NA	Solid	8015 NM	
880-66744-5	CS-5 (0.5')	Total/NA	Solid	8015 NM	
880-66744-6	CS-6 (0.5')	Total/NA	Solid	8015 NM	
880-66744-7	CS-7 (0.5')	Total/NA	Solid	8015 NM	
880-66744-8	CS-8 (0.5')	Total/NA	Solid	8015 NM	
880-66744-9	CS-9 (0.5')	Total/NA	Solid	8015 NM	
880-66744-10	CS-10 (0.5')	Total/NA	Solid	8015 NM	
880-66744-11	CS-11 (0.5')	Total/NA	Solid	8015 NM	

Eurofins Midland

## QC Association Summary

Client: Carmona Resources  
 Project/Site: Sea Snake 35 #004H

Job ID: 880-66744-1  
 SDG: Lea County NM

## HPLC/IC

## Leach Batch: 128420

Lab Sample ID	Client Sample ID	Prep Type	Matrix	Method	Prep Batch
880-66744-1	CS-1 (0.5')	Soluble	Solid	DI Leach	
880-66744-2	CS-2 (0.5')	Soluble	Solid	DI Leach	
880-66744-3	CS-3 (0.5')	Soluble	Solid	DI Leach	
880-66744-4	CS-4 (0.5')	Soluble	Solid	DI Leach	
MB 880-128420/1-A	Method Blank	Soluble	Solid	DI Leach	
LCS 880-128420/2-A	Lab Control Sample	Soluble	Solid	DI Leach	
LCSD 880-128420/3-A	Lab Control Sample Dup	Soluble	Solid	DI Leach	
880-66668-A-31-D MS	Matrix Spike	Soluble	Solid	DI Leach	
880-66668-A-31-E MSD	Matrix Spike Duplicate	Soluble	Solid	DI Leach	

## Analysis Batch: 128486

Lab Sample ID	Client Sample ID	Prep Type	Matrix	Method	Prep Batch
880-66744-1	CS-1 (0.5')	Soluble	Solid	300.0	128420
880-66744-2	CS-2 (0.5')	Soluble	Solid	300.0	128420
880-66744-3	CS-3 (0.5')	Soluble	Solid	300.0	128420
880-66744-4	CS-4 (0.5')	Soluble	Solid	300.0	128420
MB 880-128420/1-A	Method Blank	Soluble	Solid	300.0	128420
LCS 880-128420/2-A	Lab Control Sample	Soluble	Solid	300.0	128420
LCSD 880-128420/3-A	Lab Control Sample Dup	Soluble	Solid	300.0	128420
880-66668-A-31-D MS	Matrix Spike	Soluble	Solid	300.0	128420
880-66668-A-31-E MSD	Matrix Spike Duplicate	Soluble	Solid	300.0	128420

## Leach Batch: 128488

Lab Sample ID	Client Sample ID	Prep Type	Matrix	Method	Prep Batch
880-66744-5	CS-5 (0.5')	Soluble	Solid	DI Leach	
880-66744-6	CS-6 (0.5')	Soluble	Solid	DI Leach	
880-66744-7	CS-7 (0.5')	Soluble	Solid	DI Leach	
880-66744-8	CS-8 (0.5')	Soluble	Solid	DI Leach	
880-66744-9	CS-9 (0.5')	Soluble	Solid	DI Leach	
880-66744-10	CS-10 (0.5')	Soluble	Solid	DI Leach	
880-66744-11	CS-11 (0.5')	Soluble	Solid	DI Leach	
MB 880-128488/1-A	Method Blank	Soluble	Solid	DI Leach	
LCS 880-128488/2-A	Lab Control Sample	Soluble	Solid	DI Leach	
LCSD 880-128488/3-A	Lab Control Sample Dup	Soluble	Solid	DI Leach	
880-66744-5 MS	CS-5 (0.5')	Soluble	Solid	DI Leach	
880-66744-5 MSD	CS-5 (0.5')	Soluble	Solid	DI Leach	

## Analysis Batch: 128493

Lab Sample ID	Client Sample ID	Prep Type	Matrix	Method	Prep Batch
880-66744-5	CS-5 (0.5')	Soluble	Solid	300.0	128488
880-66744-6	CS-6 (0.5')	Soluble	Solid	300.0	128488
880-66744-7	CS-7 (0.5')	Soluble	Solid	300.0	128488
880-66744-8	CS-8 (0.5')	Soluble	Solid	300.0	128488
880-66744-9	CS-9 (0.5')	Soluble	Solid	300.0	128488
880-66744-10	CS-10 (0.5')	Soluble	Solid	300.0	128488
880-66744-11	CS-11 (0.5')	Soluble	Solid	300.0	128488
MB 880-128488/1-A	Method Blank	Soluble	Solid	300.0	128488
LCS 880-128488/2-A	Lab Control Sample	Soluble	Solid	300.0	128488
LCSD 880-128488/3-A	Lab Control Sample Dup	Soluble	Solid	300.0	128488
880-66744-5 MS	CS-5 (0.5')	Soluble	Solid	300.0	128488
880-66744-5 MSD	CS-5 (0.5')	Soluble	Solid	300.0	128488

Eurofins Midland

### Lab Chronicle

Client: Carmona Resources  
 Project/Site: Sea Snake 35 #004H

Job ID: 880-66744-1  
 SDG: Lea County NM

**Client Sample ID: CS-1 (0.5')**

**Lab Sample ID: 880-66744-1**

Date Collected: 01/07/26 00:00

Matrix: Solid

Date Received: 01/07/26 15:34

Prep Type	Batch Type	Batch Method	Run	Dil Factor	Initial Amount	Final Amount	Batch Number	Prepared or Analyzed	Analyst	Lab
Total/NA	Prep	5035			5.01 g	5 mL	128496	01/08/26 12:14	AA	EET MID
Total/NA	Analysis	8021B		1	5 mL	5 mL	128554	01/09/26 11:41	MNR	EET MID
Total/NA	Analysis	Total BTEX		1			128787	01/09/26 11:41	SA	EET MID
Total/NA	Analysis	8015 NM		1			128813	01/09/26 19:11	SA	EET MID
Total/NA	Prep	8015NM Prep			10.03 g	10.00 mL	128406	01/07/26 16:24	EL	EET MID
Total/NA	Analysis	8015B NM		1	1 uL	1 uL	128569	01/09/26 19:11	FC	EET MID
Soluble	Leach	DI Leach			4.96 g	50 mL	128420	01/08/26 08:12	SA	EET MID
Soluble	Analysis	300.0		1			128486	01/08/26 17:17	SMC	EET MID

**Client Sample ID: CS-2 (0.5')**

**Lab Sample ID: 880-66744-2**

Date Collected: 01/07/26 00:00

Matrix: Solid

Date Received: 01/07/26 15:34

Prep Type	Batch Type	Batch Method	Run	Dil Factor	Initial Amount	Final Amount	Batch Number	Prepared or Analyzed	Analyst	Lab
Total/NA	Prep	5035			4.98 g	5 mL	128496	01/08/26 12:14	AA	EET MID
Total/NA	Analysis	8021B		1	5 mL	5 mL	128554	01/09/26 12:02	MNR	EET MID
Total/NA	Analysis	Total BTEX		1			128787	01/09/26 12:02	SA	EET MID
Total/NA	Analysis	8015 NM		1			128813	01/09/26 19:24	SA	EET MID
Total/NA	Prep	8015NM Prep			10.01 g	10.00 mL	128406	01/07/26 16:24	EL	EET MID
Total/NA	Analysis	8015B NM		1	1 uL	1 uL	128569	01/09/26 19:24	FC	EET MID
Soluble	Leach	DI Leach			5.03 g	50 mL	128420	01/08/26 08:12	SA	EET MID
Soluble	Analysis	300.0		1			128486	01/08/26 17:24	SMC	EET MID

**Client Sample ID: CS-3 (0.5')**

**Lab Sample ID: 880-66744-3**

Date Collected: 01/07/26 00:00

Matrix: Solid

Date Received: 01/07/26 15:34

Prep Type	Batch Type	Batch Method	Run	Dil Factor	Initial Amount	Final Amount	Batch Number	Prepared or Analyzed	Analyst	Lab
Total/NA	Prep	5035			4.95 g	5 mL	128496	01/08/26 12:14	AA	EET MID
Total/NA	Analysis	8021B		1	5 mL	5 mL	128554	01/09/26 12:22	MNR	EET MID
Total/NA	Analysis	Total BTEX		1			128787	01/09/26 12:22	SA	EET MID
Total/NA	Analysis	8015 NM		1			128813	01/09/26 19:39	SA	EET MID
Total/NA	Prep	8015NM Prep			10.02 g	10.00 mL	128406	01/07/26 16:24	EL	EET MID
Total/NA	Analysis	8015B NM		1	1 uL	1 uL	128569	01/09/26 19:39	FC	EET MID
Soluble	Leach	DI Leach			5.04 g	50 mL	128420	01/08/26 08:12	SA	EET MID
Soluble	Analysis	300.0		1			128486	01/08/26 17:31	SMC	EET MID

**Client Sample ID: CS-4 (0.5')**

**Lab Sample ID: 880-66744-4**

Date Collected: 01/07/26 00:00

Matrix: Solid

Date Received: 01/07/26 15:34

Prep Type	Batch Type	Batch Method	Run	Dil Factor	Initial Amount	Final Amount	Batch Number	Prepared or Analyzed	Analyst	Lab
Total/NA	Prep	5035			5.03 g	5 mL	128496	01/08/26 12:14	AA	EET MID
Total/NA	Analysis	8021B		1	5 mL	5 mL	128554	01/09/26 12:43	MNR	EET MID
Total/NA	Analysis	Total BTEX		1			128787	01/09/26 12:43	SA	EET MID

Eurofins Midland

### Lab Chronicle

Client: Carmona Resources  
 Project/Site: Sea Snake 35 #004H

Job ID: 880-66744-1  
 SDG: Lea County NM

**Client Sample ID: CS-4 (0.5')**

**Lab Sample ID: 880-66744-4**

Date Collected: 01/07/26 00:00

Matrix: Solid

Date Received: 01/07/26 15:34

Prep Type	Batch Type	Batch Method	Run	Dil Factor	Initial Amount	Final Amount	Batch Number	Prepared or Analyzed	Analyst	Lab
Total/NA	Analysis	8015 NM		1			128813	01/09/26 19:52	SA	EET MID
Total/NA	Prep	8015NM Prep			10.02 g	10.00 mL	128406	01/07/26 16:24	EL	EET MID
Total/NA	Analysis	8015B NM		1	1 uL	1 uL	128569	01/09/26 19:52	FC	EET MID
Soluble	Leach	DI Leach			5.01 g	50 mL	128420	01/08/26 08:12	SA	EET MID
Soluble	Analysis	300.0		1			128486	01/08/26 17:38	SMC	EET MID

**Client Sample ID: CS-5 (0.5')**

**Lab Sample ID: 880-66744-5**

Date Collected: 01/07/26 00:00

Matrix: Solid

Date Received: 01/07/26 15:34

Prep Type	Batch Type	Batch Method	Run	Dil Factor	Initial Amount	Final Amount	Batch Number	Prepared or Analyzed	Analyst	Lab
Total/NA	Prep	5035			5.02 g	5 mL	128496	01/08/26 12:14	AA	EET MID
Total/NA	Analysis	8021B		1	5 mL	5 mL	128554	01/09/26 13:03	MNR	EET MID
Total/NA	Analysis	Total BTEX		1			128787	01/09/26 13:03	SA	EET MID
Total/NA	Analysis	8015 NM		1			128813	01/09/26 20:07	SA	EET MID
Total/NA	Prep	8015NM Prep			10.01 g	10.00 mL	128406	01/07/26 16:24	EL	EET MID
Total/NA	Analysis	8015B NM		1	1 uL	1 uL	128569	01/09/26 20:07	FC	EET MID
Soluble	Leach	DI Leach			5.01 g	50 mL	128488	01/08/26 10:58	SA	EET MID
Soluble	Analysis	300.0		1			128493	01/09/26 08:56	SMC	EET MID

**Client Sample ID: CS-6 (0.5')**

**Lab Sample ID: 880-66744-6**

Date Collected: 01/07/26 00:00

Matrix: Solid

Date Received: 01/07/26 15:34

Prep Type	Batch Type	Batch Method	Run	Dil Factor	Initial Amount	Final Amount	Batch Number	Prepared or Analyzed	Analyst	Lab
Total/NA	Prep	5035			5.01 g	5 mL	128496	01/08/26 12:14	AA	EET MID
Total/NA	Analysis	8021B		1	5 mL	5 mL	128554	01/09/26 13:23	MNR	EET MID
Total/NA	Analysis	Total BTEX		1			128787	01/09/26 13:23	SA	EET MID
Total/NA	Analysis	8015 NM		1			128813	01/09/26 20:20	SA	EET MID
Total/NA	Prep	8015NM Prep			10.04 g	10.00 mL	128406	01/07/26 16:24	EL	EET MID
Total/NA	Analysis	8015B NM		1	1 uL	1 uL	128569	01/09/26 20:20	FC	EET MID
Soluble	Leach	DI Leach			5.04 g	50 mL	128488	01/08/26 10:58	SA	EET MID
Soluble	Analysis	300.0		1			128493	01/09/26 09:18	SMC	EET MID

**Client Sample ID: CS-7 (0.5')**

**Lab Sample ID: 880-66744-7**

Date Collected: 01/07/26 00:00

Matrix: Solid

Date Received: 01/07/26 15:34

Prep Type	Batch Type	Batch Method	Run	Dil Factor	Initial Amount	Final Amount	Batch Number	Prepared or Analyzed	Analyst	Lab
Total/NA	Prep	5035			5.05 g	5 mL	128496	01/08/26 12:14	AA	EET MID
Total/NA	Analysis	8021B		1	5 mL	5 mL	128554	01/09/26 13:44	MNR	EET MID
Total/NA	Analysis	Total BTEX		1			128787	01/09/26 13:44	SA	EET MID
Total/NA	Analysis	8015 NM		1			128813	01/09/26 20:35	SA	EET MID
Total/NA	Prep	8015NM Prep			10.03 g	10.00 mL	128406	01/07/26 16:24	EL	EET MID
Total/NA	Analysis	8015B NM		1	1 uL	1 uL	128569	01/09/26 20:35	FC	EET MID

Eurofins Midland

### Lab Chronicle

Client: Carmona Resources  
 Project/Site: Sea Snake 35 #004H

Job ID: 880-66744-1  
 SDG: Lea County NM

**Client Sample ID: CS-7 (0.5')**

**Lab Sample ID: 880-66744-7**

Date Collected: 01/07/26 00:00

Matrix: Solid

Date Received: 01/07/26 15:34

Prep Type	Batch Type	Batch Method	Run	Dil Factor	Initial Amount	Final Amount	Batch Number	Prepared or Analyzed	Analyst	Lab
Soluble	Leach	DI Leach			5.03 g	50 mL	128488	01/08/26 10:58	SA	EET MID
Soluble	Analysis	300.0		1			128493	01/08/26 18:37	SMC	EET MID

**Client Sample ID: CS-8 (0.5')**

**Lab Sample ID: 880-66744-8**

Date Collected: 01/07/26 00:00

Matrix: Solid

Date Received: 01/07/26 15:34

Prep Type	Batch Type	Batch Method	Run	Dil Factor	Initial Amount	Final Amount	Batch Number	Prepared or Analyzed	Analyst	Lab
Total/NA	Prep	5035			4.98 g	5 mL	128496	01/08/26 12:14	AA	EET MID
Total/NA	Analysis	8021B		1	5 mL	5 mL	128554	01/09/26 14:04	MNR	EET MID
Total/NA	Analysis	Total BTEX		1			128787	01/09/26 14:04	SA	EET MID
Total/NA	Analysis	8015 NM		1			128813	01/09/26 20:48	SA	EET MID
Total/NA	Prep	8015NM Prep			10.01 g	10.00 mL	128406	01/07/26 16:24	EL	EET MID
Total/NA	Analysis	8015B NM		1	1 uL	1 uL	128569	01/09/26 20:48	FC	EET MID
Soluble	Leach	DI Leach			5.02 g	50 mL	128488	01/08/26 10:58	SA	EET MID
Soluble	Analysis	300.0		1			128493	01/08/26 18:44	SMC	EET MID

**Client Sample ID: CS-9 (0.5')**

**Lab Sample ID: 880-66744-9**

Date Collected: 01/07/26 00:00

Matrix: Solid

Date Received: 01/07/26 15:34

Prep Type	Batch Type	Batch Method	Run	Dil Factor	Initial Amount	Final Amount	Batch Number	Prepared or Analyzed	Analyst	Lab
Total/NA	Prep	5035			4.96 g	5 mL	128496	01/08/26 12:14	AA	EET MID
Total/NA	Analysis	8021B		1	5 mL	5 mL	128554	01/09/26 14:25	MNR	EET MID
Total/NA	Analysis	Total BTEX		1			128787	01/09/26 14:25	SA	EET MID
Total/NA	Analysis	8015 NM		1			128813	01/09/26 21:16	SA	EET MID
Total/NA	Prep	8015NM Prep			10.02 g	10.00 mL	128406	01/07/26 16:24	EL	EET MID
Total/NA	Analysis	8015B NM		1	1 uL	1 uL	128569	01/09/26 21:16	FC	EET MID
Soluble	Leach	DI Leach			4.98 g	50 mL	128488	01/08/26 10:58	SA	EET MID
Soluble	Analysis	300.0		1			128493	01/08/26 18:51	SMC	EET MID

**Client Sample ID: CS-10 (0.5')**

**Lab Sample ID: 880-66744-10**

Date Collected: 01/07/26 00:00

Matrix: Solid

Date Received: 01/07/26 15:34

Prep Type	Batch Type	Batch Method	Run	Dil Factor	Initial Amount	Final Amount	Batch Number	Prepared or Analyzed	Analyst	Lab
Total/NA	Prep	5035			5.03 g	5 mL	128496	01/08/26 12:14	AA	EET MID
Total/NA	Analysis	8021B		1	5 mL	5 mL	128554	01/09/26 14:45	MNR	EET MID
Total/NA	Analysis	Total BTEX		1			128787	01/09/26 14:45	SA	EET MID
Total/NA	Analysis	8015 NM		1			128813	01/09/26 21:30	SA	EET MID
Total/NA	Prep	8015NM Prep			10.05 g	10.00 mL	128406	01/07/26 16:24	EL	EET MID
Total/NA	Analysis	8015B NM		1	1 uL	1 uL	128569	01/09/26 21:30	FC	EET MID
Soluble	Leach	DI Leach			4.95 g	50 mL	128488	01/08/26 10:58	SA	EET MID
Soluble	Analysis	300.0		1			128493	01/08/26 19:12	SMC	EET MID

Eurofins Midland

### Lab Chronicle

Client: Carmona Resources  
 Project/Site: Sea Snake 35 #004H

Job ID: 880-66744-1  
 SDG: Lea County NM

**Client Sample ID: CS-11 (0.5')**

**Lab Sample ID: 880-66744-11**

Date Collected: 01/07/26 00:00

Matrix: Solid

Date Received: 01/07/26 15:34

Prep Type	Batch Type	Batch Method	Run	Dil Factor	Initial Amount	Final Amount	Batch Number	Prepared or Analyzed	Analyst	Lab
Total/NA	Prep	5035			5.01 g	5 mL	128496	01/08/26 12:14	AA	EET MID
Total/NA	Analysis	8021B		1	5 mL	5 mL	128554	01/09/26 17:10	MNR	EET MID
Total/NA	Analysis	Total BTEX		1			128787	01/09/26 17:10	SA	EET MID
Total/NA	Analysis	8015 NM		1			128813	01/09/26 21:44	SA	EET MID
Total/NA	Prep	8015NM Prep			10.03 g	10.00 mL	128406	01/07/26 16:24	EL	EET MID
Total/NA	Analysis	8015B NM		1	1 uL	1 uL	128569	01/09/26 21:44	FC	EET MID
Soluble	Leach	DI Leach			5.03 g	50 mL	128488	01/08/26 10:58	SA	EET MID
Soluble	Analysis	300.0		1			128493	01/08/26 19:19	SMC	EET MID

**Laboratory References:**

EET MID = Eurofins Midland, 1211 W. Florida Ave, Midland, TX 79701, TEL (432)704-5440

- 1
- 2
- 3
- 4
- 5
- 6
- 7
- 8
- 9
- 10
- 11
- 12
- 13
- 14

### Accreditation/Certification Summary

Client: Carmona Resources  
Project/Site: Sea Snake 35 #004H

Job ID: 880-66744-1  
SDG: Lea County NM

#### Laboratory: Eurofins Midland

Unless otherwise noted, all analytes for this laboratory were covered under each accreditation/certification below.

Authority	Program	Identification Number	Expiration Date
Texas	NELAP	T104704400	06-30-26

The following analytes are included in this report, but the laboratory is not certified by the governing authority. This list may include analytes for which the agency does not offer certification.

Analysis Method	Prep Method	Matrix	Analyte
8015 NM		Solid	Total TPH
Total BTEX		Solid	Total BTEX

- 1
- 2
- 3
- 4
- 5
- 6
- 7
- 8
- 9
- 10
- 11
- 12
- 13
- 14

### Method Summary

Client: Carmona Resources  
 Project/Site: Sea Snake 35 #004H

Job ID: 880-66744-1  
 SDG: Lea County NM

Method	Method Description	Protocol	Laboratory
8021B	Volatile Organic Compounds (GC)	SW846	EET MID
Total BTEX	Total BTEX Calculation	TAL SOP	EET MID
8015 NM	Diesel Range Organics (DRO) (GC)	SW846	EET MID
8015B NM	Diesel Range Organics (DRO) (GC)	SW846	EET MID
300.0	Anions, Ion Chromatography	EPA	EET MID
5035	Closed System Purge and Trap	SW846	EET MID
8015NM Prep	Microextraction	SW846	EET MID
DI Leach	Deionized Water Leaching Procedure	ASTM	EET MID

**Protocol References:**

- ASTM = ASTM International
- EPA = US Environmental Protection Agency
- SW846 = "Test Methods For Evaluating Solid Waste, Physical/Chemical Methods", Third Edition, November 1986 And Its Updates.
- TAL SOP = TestAmerica Laboratories, Standard Operating Procedure

**Laboratory References:**

- EET MID = Eurofins Midland, 1211 W. Florida Ave, Midland, TX 79701, TEL (432)704-5440



### Sample Summary

Client: Carmona Resources  
Project/Site: Sea Snake 35 #004H

Job ID: 880-66744-1  
SDG: Lea County NM

Lab Sample ID	Client Sample ID	Matrix	Collected	Received	Sample Origin
880-66744-1	CS-1 (0.5')	Solid	01/07/26 00:00	01/07/26 15:34	Texas
880-66744-2	CS-2 (0.5')	Solid	01/07/26 00:00	01/07/26 15:34	Texas
880-66744-3	CS-3 (0.5')	Solid	01/07/26 00:00	01/07/26 15:34	Texas
880-66744-4	CS-4 (0.5')	Solid	01/07/26 00:00	01/07/26 15:34	Texas
880-66744-5	CS-5 (0.5')	Solid	01/07/26 00:00	01/07/26 15:34	Texas
880-66744-6	CS-6 (0.5')	Solid	01/07/26 00:00	01/07/26 15:34	Texas
880-66744-7	CS-7 (0.5')	Solid	01/07/26 00:00	01/07/26 15:34	Texas
880-66744-8	CS-8 (0.5')	Solid	01/07/26 00:00	01/07/26 15:34	Texas
880-66744-9	CS-9 (0.5')	Solid	01/07/26 00:00	01/07/26 15:34	Texas
880-66744-10	CS-10 (0.5')	Solid	01/07/26 00:00	01/07/26 15:34	Texas
880-66744-11	CS-11 (0.5')	Solid	01/07/26 00:00	01/07/26 15:34	Texas

- 1
- 2
- 3
- 4
- 5
- 6
- 7
- 8
- 9
- 10
- 11
- 12
- 13
- 14



890-66744 Chain of Custody

V

Chain of Custody

Page 1 of 2

**Work Order Comments**

Program: UST/PST PRP Brownfields RRC Superfund

State of Project: Level II Level III PST/UST RRP Level IV

Reporting Level: Level II Level III PST/UST RRP Level IV

Deliverables: EDD ADaPT Other:

Project Manager: Riley Plogger  
 Company Name: Carmona Resources  
 Address: 310 West Wall Ste. 500  
 City, State ZIP: Midland, TX 79701  
 Phone: 432-701-5475

Bill to: (if different)  
 Company Name: Jim Raley  
 Address: Devon Energy  
 City, State ZIP: 5315 Buena Vista Dr  
 Carlsbad NM, 88220  
 Email: jim.raley@dvn.com & Rplogger@CarmonaResources.com

**ANALYSIS REQUEST**

Project Name: Sea Snake 35 #004H  
 Project Number: 3091  
 Project Location: Lea County, NM  
 Sampler's Name: JM  
 PO #: JM

Turn Around:  Routine  Rush  
 Due Date: Standard TAT

**SAMPLE RECEIPT**

Temp Blank: Yes  No  Wet Ice: Yes  No   
 Received Intact: Yes  No  Thermometer ID: 1.8  
 Cooler Custody Seals: Yes  No  Correction Factor: -0.1  
 Sample Custody Seals: Yes  No  Temperature Reading: 5.3  
 Total Containers: Yes  No  Corrected Temperature: 5.2

Sample Identification	Date	Time	Soil	Water	Grab/Comp	# of Cont	Parameters		Pres. Code	ANALYSIS REQUEST	Preservative Codes
							TPH 8015M (GRO + PRO + MRO)	BTEX 8021B			
CS-1 (0.5')	1/7/2025		X		Comp	1	X	X		None: NO Cool: Cool HCL: HC H <sub>2</sub> SO <sub>4</sub> : H <sub>2</sub> H <sub>3</sub> PO <sub>4</sub> : HP NaHSO <sub>4</sub> : NABIS Na <sub>2</sub> S <sub>2</sub> O <sub>3</sub> : NaSO <sub>3</sub> Zn Acetate+NaOH: Zn NaOH+Ascorbic Acid: SACP	
CS-2 (0.5')	1/7/2025		X		Comp	1	X	X			
CS-3 (0.5')	1/7/2025		X		Comp	1	X	X			
CS-4 (0.5')	1/7/2025		X		Comp	1	X	X			
CS-5 (0.5')	1/7/2025		X		Comp	1	X	X			
CS-6 (0.5')	1/7/2025		X		Comp	1	X	X			
CS-7 (0.5')	1/7/2025		X		Comp	1	X	X			
CS-8 (0.5')	1/7/2025		X		Comp	1	X	X			
CS-9 (0.5')	1/7/2025		X		Comp	1	X	X			
CS-10 (0.5')	1/7/2025		X		Comp	1	X	X			

Please send results to cmoehring@carmonaresources.com and mcarmona@carmonaresources.com

Relinquished by: (Signature) \_\_\_\_\_ Date/Time: 1/7/26 1534<sup>2</sup>

Received by: (Signature) \_\_\_\_\_ Date/Time: \_\_\_\_\_

Relinquished by: (Signature) \_\_\_\_\_ Date/Time: \_\_\_\_\_

Received by: (Signature) \_\_\_\_\_ Date/Time: \_\_\_\_\_



### Login Sample Receipt Checklist

Client: Carmona Resources

Job Number: 880-66744-1  
SDG Number: Lea County NM

**Login Number: 66744**  
**List Number: 1**  
**Creator: Lee, Randall**

**List Source: Eurofins Midland**

Question	Answer	Comment
The cooler's custody seal, if present, is intact.	N/A	
Sample custody seals, if present, are intact.	N/A	
The cooler or samples do not appear to have been compromised or tampered with.	True	
Samples were received on ice.	True	
Cooler Temperature is acceptable.	True	
Cooler Temperature is recorded.	True	
COC is present.	True	
COC is filled out in ink and legible.	True	
COC is filled out with all pertinent information.	True	
Is the Field Sampler's name present on COC?	True	
There are no discrepancies between the containers received and the COC.	True	
Samples are received within Holding Time (excluding tests with immediate HTs)	True	
Sample containers have legible labels.	True	
Containers are not broken or leaking.	True	
Sample collection date/times are provided.	True	
Appropriate sample containers are used.	True	
Sample bottles are completely filled.	True	
Sample Preservation Verified.	N/A	
There is sufficient vol. for all requested analyses, incl. any requested MS/MSDs	True	
Containers requiring zero headspace have no headspace or bubble is <6mm (1/4").	N/A	

- 1
- 2
- 3
- 4
- 5
- 6
- 7
- 8
- 9
- 10
- 11
- 12
- 13
- 14



PHONE (575) 393-2326 ° 101 E. MARLAND ° HOBBS, NM 88240

---

January 21, 2026

RILEY PLOGGER

CARMONA RESOURCES

310 W WALL ST, SUITE 500

MIDLAND, TX 79701

RE: SEA SNAKE 35 #004H

Enclosed are the results of analyses for samples received by the laboratory on 01/15/26 11:16.

Cardinal Laboratories is accredited through Texas NELAP under certificate number TX-C25-00101. Accreditation applies to drinking water, non-potable water and solid and chemical materials. All accredited analytes are denoted by an asterisk (\*). For a complete list of accredited analytes and matrices visit the TCEQ website at [www.tceq.texas.gov/field/qa/lab\\_accred\\_certif.html](http://www.tceq.texas.gov/field/qa/lab_accred_certif.html).

Cardinal Laboratories is accredited through the State of Colorado Department of Public Health and Environment for:

Method EPA 552.2	Haloacetic Acids (HAA-5)
Method EPA 524.2	Total Trihalomethanes (TTHM)
Method EPA 524.4	Regulated VOCs (V1, V2, V3)

Accreditation applies to public drinking water matrices.

This report meets NELAP requirements and is made up of a cover page, analytical results, and a copy of the original chain-of-custody. If you have any questions concerning this report, please feel free to contact me.

Sincerely,

A handwritten signature in black ink that reads "Celey D. Keene".

Celey D. Keene

Lab Director/Quality Manager



PHONE (575) 393-2326 ° 101 E. MARLAND ° HOBBS, NM 88240

**Analytical Results For:**

CARMONA RESOURCES  
 RILEY PLOGGER  
 310 W WALL ST, SUITE 500  
 MIDLAND TX, 79701  
 Fax To:

Received:	01/15/2026	Sampling Date:	01/15/2026
Reported:	01/21/2026	Sampling Type:	Soil
Project Name:	SEA SNAKE 35 #004H	Sampling Condition:	Cool & Intact
Project Number:	3091	Sample Received By:	Shalyn Rodriguez
Project Location:	DEVON - LEA COUNTY, NM		

**Sample ID: H - 1 ( 0-0.5' ) (H260250-01)**

BTEX 8021B		mg/kg		Analyzed By: JH					
Analyte	Result	Reporting Limit	Analyzed	Method Blank	BS	% Recovery	True Value QC	RPD	Qualifier
Benzene*	<0.050	0.050	01/17/2026	ND	1.90	94.8	2.00	1.46	
Toluene*	<0.050	0.050	01/17/2026	ND	1.99	99.7	2.00	1.42	
Ethylbenzene*	<0.050	0.050	01/17/2026	ND	1.99	99.7	2.00	0.678	
Total Xylenes*	<0.150	0.150	01/17/2026	ND	5.92	98.7	6.00	0.701	
Total BTEX	<0.300	0.300	01/17/2026	ND					

Surrogate: 4-Bromofluorobenzene (PID) 96.5 % 70.4-141

Chloride, SM4500Cl-B		mg/kg		Analyzed By: HM					
Analyte	Result	Reporting Limit	Analyzed	Method Blank	BS	% Recovery	True Value QC	RPD	Qualifier
Chloride	64.0	16.0	01/16/2026	ND	432	108	400	0.00	

TPH 8015M		mg/kg		Analyzed By: MS					
Analyte	Result	Reporting Limit	Analyzed	Method Blank	BS	% Recovery	True Value QC	RPD	Qualifier
GRO C6-C10*	<10.0	10.0	01/17/2026	ND	201	101	200	0.437	
DRO >C10-C28*	<10.0	10.0	01/17/2026	ND	215	107	200	0.822	
EXT DRO >C28-C36	<10.0	10.0	01/17/2026	ND					

Surrogate: 1-Chlorooctane 82.2 % 52.4-130

Surrogate: 1-Chlorooctadecane 87.9 % 39.9-141

Cardinal Laboratories

\*=Accredited Analyte

PLEASE NOTE: Liability and Damages. Cardinal's liability and client's exclusive remedy for any claim arising, whether based in contract or tort, shall be limited to the amount paid by client for analyses. All claims, including those for negligence and any other cause whatsoever shall be deemed waived unless made in writing and received by Cardinal within thirty (30) days after completion of the applicable service. In no event shall Cardinal be liable for incidental or consequential damages, including, without limitation, business interruptions, loss of use, or loss of profits incurred by client, its subsidiaries, affiliates or successors arising out of or related to the performance of the services hereunder by Cardinal, regardless of whether such claim is based upon any of the above stated reasons or otherwise. Results relate only to the samples identified above. This report shall not be reproduced except in full with written approval of Cardinal Laboratories.

Celey D. Keene, Lab Director/Quality Manager



PHONE (575) 393-2326 ° 101 E. MARLAND ° HOBBS, NM 88240

**Analytical Results For:**

CARMONA RESOURCES  
 RILEY PLOGGER  
 310 W WALL ST, SUITE 500  
 MIDLAND TX, 79701  
 Fax To:

Received:	01/15/2026	Sampling Date:	01/15/2026
Reported:	01/21/2026	Sampling Type:	Soil
Project Name:	SEA SNAKE 35 #004H	Sampling Condition:	Cool & Intact
Project Number:	3091	Sample Received By:	Shalyn Rodriguez
Project Location:	DEVON - LEA COUNTY, NM		

**Sample ID: H - 2 ( 0-0.5' ) (H260250-02)**

BTEX 8021B		mg/kg		Analyzed By: JH					
Analyte	Result	Reporting Limit	Analyzed	Method Blank	BS	% Recovery	True Value QC	RPD	Qualifier
Benzene*	<0.050	0.050	01/17/2026	ND	1.90	94.8	2.00	1.46	
Toluene*	<0.050	0.050	01/17/2026	ND	1.99	99.7	2.00	1.42	
Ethylbenzene*	<0.050	0.050	01/17/2026	ND	1.99	99.7	2.00	0.678	
Total Xylenes*	<0.150	0.150	01/17/2026	ND	5.92	98.7	6.00	0.701	
Total BTEX	<0.300	0.300	01/17/2026	ND					

Surrogate: 4-Bromofluorobenzene (PID) 96.7 % 70.4-141

Chloride, SM4500CI-B		mg/kg		Analyzed By: HM					
Analyte	Result	Reporting Limit	Analyzed	Method Blank	BS	% Recovery	True Value QC	RPD	Qualifier
Chloride	144	16.0	01/16/2026	ND	432	108	400	0.00	

TPH 8015M		mg/kg		Analyzed By: MS					
Analyte	Result	Reporting Limit	Analyzed	Method Blank	BS	% Recovery	True Value QC	RPD	Qualifier
GRO C6-C10*	<10.0	10.0	01/17/2026	ND	201	101	200	0.437	
DRO >C10-C28*	<10.0	10.0	01/17/2026	ND	215	107	200	0.822	
EXT DRO >C28-C36	<10.0	10.0	01/17/2026	ND					

Surrogate: 1-Chlorooctane 87.0 % 52.4-130

Surrogate: 1-Chlorooctadecane 91.5 % 39.9-141

Cardinal Laboratories

\*=Accredited Analyte

PLEASE NOTE: Liability and Damages. Cardinal's liability and client's exclusive remedy for any claim arising, whether based in contract or tort, shall be limited to the amount paid by client for analyses. All claims, including those for negligence and any other cause whatsoever shall be deemed waived unless made in writing and received by Cardinal within thirty (30) days after completion of the applicable service. In no event shall Cardinal be liable for incidental or consequential damages, including, without limitation, business interruptions, loss of use, or loss of profits incurred by client, its subsidiaries, affiliates or successors arising out of or related to the performance of the services hereunder by Cardinal, regardless of whether such claim is based upon any of the above stated reasons or otherwise. Results relate only to the samples identified above. This report shall not be reproduced except in full with written approval of Cardinal Laboratories.

Celey D. Keene, Lab Director/Quality Manager



PHONE (575) 393-2326 ° 101 E. MARLAND ° HOBBS, NM 88240

**Analytical Results For:**

CARMONA RESOURCES  
 RILEY PLOGGER  
 310 W WALL ST, SUITE 500  
 MIDLAND TX, 79701  
 Fax To:

Received:	01/15/2026	Sampling Date:	01/15/2026
Reported:	01/21/2026	Sampling Type:	Soil
Project Name:	SEA SNAKE 35 #004H	Sampling Condition:	Cool & Intact
Project Number:	3091	Sample Received By:	Shalyn Rodriguez
Project Location:	DEVON - LEA COUNTY, NM		

**Sample ID: H - 3 ( 0-0.5' ) (H260250-03)**

BTEX 8021B		mg/kg		Analyzed By: JH					
Analyte	Result	Reporting Limit	Analyzed	Method Blank	BS	% Recovery	True Value QC	RPD	Qualifier
Benzene*	<0.050	0.050	01/17/2026	ND	1.90	94.8	2.00	1.46	
Toluene*	<0.050	0.050	01/17/2026	ND	1.99	99.7	2.00	1.42	
Ethylbenzene*	<0.050	0.050	01/17/2026	ND	1.99	99.7	2.00	0.678	
Total Xylenes*	<0.150	0.150	01/17/2026	ND	5.92	98.7	6.00	0.701	
Total BTEX	<0.300	0.300	01/17/2026	ND					

Surrogate: 4-Bromofluorobenzene (PID) 98.3 % 70.4-141

Chloride, SM4500CI-B		mg/kg		Analyzed By: HM					
Analyte	Result	Reporting Limit	Analyzed	Method Blank	BS	% Recovery	True Value QC	RPD	Qualifier
Chloride	128	16.0	01/16/2026	ND	432	108	400	0.00	

TPH 8015M		mg/kg		Analyzed By: MS					
Analyte	Result	Reporting Limit	Analyzed	Method Blank	BS	% Recovery	True Value QC	RPD	Qualifier
GRO C6-C10*	<10.0	10.0	01/17/2026	ND	201	101	200	0.437	
DRO >C10-C28*	<10.0	10.0	01/17/2026	ND	215	107	200	0.822	
EXT DRO >C28-C36	<10.0	10.0	01/17/2026	ND					

Surrogate: 1-Chlorooctane 100 % 52.4-130

Surrogate: 1-Chlorooctadecane 104 % 39.9-141

Cardinal Laboratories

\*=Accredited Analyte

PLEASE NOTE: Liability and Damages. Cardinal's liability and client's exclusive remedy for any claim arising, whether based in contract or tort, shall be limited to the amount paid by client for analyses. All claims, including those for negligence and any other cause whatsoever shall be deemed waived unless made in writing and received by Cardinal within thirty (30) days after completion of the applicable service. In no event shall Cardinal be liable for incidental or consequential damages, including, without limitation, business interruptions, loss of use, or loss of profits incurred by client, its subsidiaries, affiliates or successors arising out of or related to the performance of the services hereunder by Cardinal, regardless of whether such claim is based upon any of the above stated reasons or otherwise. Results relate only to the samples identified above. This report shall not be reproduced except in full with written approval of Cardinal Laboratories.

Celey D. Keene, Lab Director/Quality Manager



PHONE (575) 393-2326 ° 101 E. MARLAND ° HOBBS, NM 88240

**Analytical Results For:**

CARMONA RESOURCES  
 RILEY PLOGGER  
 310 W WALL ST, SUITE 500  
 MIDLAND TX, 79701  
 Fax To:

Received:	01/15/2026	Sampling Date:	01/15/2026
Reported:	01/21/2026	Sampling Type:	Soil
Project Name:	SEA SNAKE 35 #004H	Sampling Condition:	Cool & Intact
Project Number:	3091	Sample Received By:	Shalyn Rodriguez
Project Location:	DEVON - LEA COUNTY, NM		

**Sample ID: H - 4 ( 0-0.5' ) (H260250-04)**

BTEX 8021B		mg/kg		Analyzed By: JH					
Analyte	Result	Reporting Limit	Analyzed	Method Blank	BS	% Recovery	True Value QC	RPD	Qualifier
Benzene*	<0.050	0.050	01/17/2026	ND	1.90	94.8	2.00	1.46	
Toluene*	<0.050	0.050	01/17/2026	ND	1.99	99.7	2.00	1.42	
Ethylbenzene*	<0.050	0.050	01/17/2026	ND	1.99	99.7	2.00	0.678	
Total Xylenes*	<0.150	0.150	01/17/2026	ND	5.92	98.7	6.00	0.701	
Total BTEX	<0.300	0.300	01/17/2026	ND					

Surrogate: 4-Bromofluorobenzene (PID) 98.3 % 70.4-141

Chloride, SM4500CI-B		mg/kg		Analyzed By: HM					
Analyte	Result	Reporting Limit	Analyzed	Method Blank	BS	% Recovery	True Value QC	RPD	Qualifier
Chloride	64.0	16.0	01/16/2026	ND	432	108	400	0.00	

TPH 8015M		mg/kg		Analyzed By: MS					
Analyte	Result	Reporting Limit	Analyzed	Method Blank	BS	% Recovery	True Value QC	RPD	Qualifier
GRO C6-C10*	<10.0	10.0	01/17/2026	ND	201	101	200	0.437	
DRO >C10-C28*	<10.0	10.0	01/17/2026	ND	215	107	200	0.822	
EXT DRO >C28-C36	<10.0	10.0	01/17/2026	ND					

Surrogate: 1-Chlorooctane 98.5 % 52.4-130

Surrogate: 1-Chlorooctadecane 105 % 39.9-141

Cardinal Laboratories

\*=Accredited Analyte

PLEASE NOTE: Liability and Damages. Cardinal's liability and client's exclusive remedy for any claim arising, whether based in contract or tort, shall be limited to the amount paid by client for analyses. All claims, including those for negligence and any other cause whatsoever shall be deemed waived unless made in writing and received by Cardinal within thirty (30) days after completion of the applicable service. In no event shall Cardinal be liable for incidental or consequential damages, including, without limitation, business interruptions, loss of use, or loss of profits incurred by client, its subsidiaries, affiliates or successors arising out of or related to the performance of the services hereunder by Cardinal, regardless of whether such claim is based upon any of the above stated reasons or otherwise. Results relate only to the samples identified above. This report shall not be reproduced except in full with written approval of Cardinal Laboratories.

Celey D. Keene, Lab Director/Quality Manager



PHONE (575) 393-2326 ° 101 E. MARLAND ° HOBBS, NM 88240

**Analytical Results For:**

CARMONA RESOURCES  
 RILEY PLOGGER  
 310 W WALL ST, SUITE 500  
 MIDLAND TX, 79701  
 Fax To:

Received:	01/15/2026	Sampling Date:	01/15/2026
Reported:	01/21/2026	Sampling Type:	Soil
Project Name:	SEA SNAKE 35 #004H	Sampling Condition:	Cool & Intact
Project Number:	3091	Sample Received By:	Shalyn Rodriguez
Project Location:	DEVON - LEA COUNTY, NM		

**Sample ID: H - 5 ( 0-0.5' ) (H260250-05)**

BTEX 8021B		mg/kg		Analyzed By: JH					
Analyte	Result	Reporting Limit	Analyzed	Method Blank	BS	% Recovery	True Value QC	RPD	Qualifier
Benzene*	<0.050	0.050	01/17/2026	ND	1.90	94.8	2.00	1.46	
Toluene*	<0.050	0.050	01/17/2026	ND	1.99	99.7	2.00	1.42	
Ethylbenzene*	<0.050	0.050	01/17/2026	ND	1.99	99.7	2.00	0.678	
Total Xylenes*	<0.150	0.150	01/17/2026	ND	5.92	98.7	6.00	0.701	
Total BTEX	<0.300	0.300	01/17/2026	ND					

Surrogate: 4-Bromofluorobenzene (PID) 96.9 % 70.4-141

Chloride, SM4500CI-B		mg/kg		Analyzed By: HM					
Analyte	Result	Reporting Limit	Analyzed	Method Blank	BS	% Recovery	True Value QC	RPD	Qualifier
Chloride	112	16.0	01/16/2026	ND	432	108	400	0.00	

TPH 8015M		mg/kg		Analyzed By: MS					
Analyte	Result	Reporting Limit	Analyzed	Method Blank	BS	% Recovery	True Value QC	RPD	Qualifier
GRO C6-C10*	<10.0	10.0	01/17/2026	ND	201	101	200	0.437	
DRO >C10-C28*	<10.0	10.0	01/17/2026	ND	215	107	200	0.822	
EXT DRO >C28-C36	<10.0	10.0	01/17/2026	ND					

Surrogate: 1-Chlorooctane 98.9 % 52.4-130

Surrogate: 1-Chlorooctadecane 103 % 39.9-141

Cardinal Laboratories

\*=Accredited Analyte

PLEASE NOTE: Liability and Damages. Cardinal's liability and client's exclusive remedy for any claim arising, whether based in contract or tort, shall be limited to the amount paid by client for analyses. All claims, including those for negligence and any other cause whatsoever shall be deemed waived unless made in writing and received by Cardinal within thirty (30) days after completion of the applicable service. In no event shall Cardinal be liable for incidental or consequential damages, including, without limitation, business interruptions, loss of use, or loss of profits incurred by client, its subsidiaries, affiliates or successors arising out of or related to the performance of the services hereunder by Cardinal, regardless of whether such claim is based upon any of the above stated reasons or otherwise. Results relate only to the samples identified above. This report shall not be reproduced except in full with written approval of Cardinal Laboratories.

Celey D. Keene, Lab Director/Quality Manager



PHONE (575) 393-2326 ° 101 E. MARLAND ° HOBBS, NM 88240

**Analytical Results For:**

CARMONA RESOURCES  
 RILEY PLOGGER  
 310 W WALL ST, SUITE 500  
 MIDLAND TX, 79701  
 Fax To:

Received:	01/15/2026	Sampling Date:	01/15/2026
Reported:	01/21/2026	Sampling Type:	Soil
Project Name:	SEA SNAKE 35 #004H	Sampling Condition:	Cool & Intact
Project Number:	3091	Sample Received By:	Shalyn Rodriguez
Project Location:	DEVON - LEA COUNTY, NM		

**Sample ID: H - 6 ( 0-0.5' ) (H260250-06)**

BTEX 8021B		mg/kg		Analyzed By: JH					
Analyte	Result	Reporting Limit	Analyzed	Method Blank	BS	% Recovery	True Value QC	RPD	Qualifier
Benzene*	<0.050	0.050	01/17/2026	ND	1.87	93.4	2.00	4.25	
Toluene*	<0.050	0.050	01/17/2026	ND	1.97	98.5	2.00	3.83	
Ethylbenzene*	<0.050	0.050	01/17/2026	ND	1.98	99.2	2.00	3.90	
Total Xylenes*	<0.150	0.150	01/17/2026	ND	5.89	98.1	6.00	3.86	
Total BTEX	<0.300	0.300	01/17/2026	ND					

Surrogate: 4-Bromofluorobenzene (PID) 97.1 % 70.4-141

Chloride, SM4500CI-B		mg/kg		Analyzed By: HM					
Analyte	Result	Reporting Limit	Analyzed	Method Blank	BS	% Recovery	True Value QC	RPD	Qualifier
Chloride	64.0	16.0	01/16/2026	ND	432	108	400	0.00	

TPH 8015M		mg/kg		Analyzed By: MS					
Analyte	Result	Reporting Limit	Analyzed	Method Blank	BS	% Recovery	True Value QC	RPD	Qualifier
GRO C6-C10*	<10.0	10.0	01/17/2026	ND	201	101	200	0.437	
DRO >C10-C28*	<10.0	10.0	01/17/2026	ND	215	107	200	0.822	
EXT DRO >C28-C36	<10.0	10.0	01/17/2026	ND					

Surrogate: 1-Chlorooctane 101 % 52.4-130

Surrogate: 1-Chlorooctadecane 107 % 39.9-141

Cardinal Laboratories

\*=Accredited Analyte

PLEASE NOTE: Liability and Damages. Cardinal's liability and client's exclusive remedy for any claim arising, whether based in contract or tort, shall be limited to the amount paid by client for analyses. All claims, including those for negligence and any other cause whatsoever shall be deemed waived unless made in writing and received by Cardinal within thirty (30) days after completion of the applicable service. In no event shall Cardinal be liable for incidental or consequential damages, including, without limitation, business interruptions, loss of use, or loss of profits incurred by client, its subsidiaries, affiliates or successors arising out of or related to the performance of the services hereunder by Cardinal, regardless of whether such claim is based upon any of the above stated reasons or otherwise. Results relate only to the samples identified above. This report shall not be reproduced except in full with written approval of Cardinal Laboratories.

Celey D. Keene, Lab Director/Quality Manager



PHONE (575) 393-2326 ° 101 E. MARLAND ° HOBBS, NM 88240

Notes and Definitions

- QM-07 The spike recovery was outside acceptance limits for the MS and/or MSD. The batch was accepted based on acceptable LCS recovery.
ND Analyte NOT DETECTED at or above the reporting limit
RPD Relative Percent Difference
\*\* Samples not received at proper temperature of 6°C or below.
\*\*\* Insufficient time to reach temperature.
- Chloride by SM4500Cl-B does not require samples be received at or below 6°C
Samples reported on an as received basis (wet) unless otherwise noted on report

Cardinal Laboratories

\*=Accredited Analyte

PLEASE NOTE: Liability and Damages. Cardinal's liability and client's exclusive remedy for any claim arising, whether based in contract or tort, shall be limited to the amount paid by client for analyses. All claims, including those for negligence and any other cause whatsoever shall be deemed waived unless made in writing and received by Cardinal within thirty (30) days after completion of the applicable service. In no event shall Cardinal be liable for incidental or consequential damages, including, without limitation, business interruptions, loss of use, or loss of profits incurred by client, its subsidiaries, affiliates or successors arising out of or related to the performance of the services hereunder by Cardinal, regardless of whether such claim is based upon any of the above stated reasons or otherwise. Results relate only to the samples identified above. This report shall not be reproduced except in full with written approval of Cardinal Laboratories.

Celey D. Keene

Celey D. Keene, Lab Director/Quality Manager

Chain of Custody

Work Order No: H2100250

Page 1 of 1

Project Manager:	Riley Plogger	Bill to: (if different)	Jim Raley
Company Name:	Carmona Resources	Company Name:	Devon Energy
Address:	310 West Wall Ste. 500	Address:	5315 Buena Vista Dr
City, State ZIP:	Midland, TX 79701	City, State ZIP:	Carlsbad NM, 88220
Phone:	432-701-5475	Email:	jim.raley@dmv.com & Rplogger@CarmonaResources.com

Work Order Comments	
Program: UST/PST	<input type="checkbox"/> PRP <input type="checkbox"/> Brownfields <input type="checkbox"/> RRC <input type="checkbox"/> Superfund
State of Project:	
Reporting: Level II	<input type="checkbox"/> Level III <input type="checkbox"/> PST/UST <input type="checkbox"/> TRRP <input type="checkbox"/> Level IV
Deliverables: EDD	<input type="checkbox"/> ADAPT <input type="checkbox"/> Other:

Project Name:	Sea Snake 35 #004H	Turn Around	<input checked="" type="checkbox"/> Routine <input type="checkbox"/> Rush	Standard TAT
Project Number:	3091	Due Date:		
Project Location:	Lea County, NM			
Sampler's Name:	JDC			
PO #:				

Sample Identification	Date	Time	Soil	Water	Grab/Comp	# of Cont	Parameters	Preservative Codes
H-1 (0-0.5')	1/15/2025		X	Grab/	Comp	1	BTEX 8021B	None: NO
H-2 (0-0.5')	1/15/2025		X	Grab/	Comp	1	TPH 8015M ( GRO + DRO + MRO)	DI Water: H <sub>2</sub> O
H-3 (0-0.5')	1/15/2025		X	Grab/	Comp	1	Chloride 4500	Cool: Cool
H-4 (0-0.5')	1/15/2025		X	Grab/	Comp	1		HCL: HC
H-5 (0-0.5')	1/15/2025		X	Grab/	Comp	1		H <sub>2</sub> SO <sub>4</sub> : H <sub>2</sub>
H-6 (0-0.5')	1/15/2025		X	Grab/	Comp	1		H <sub>3</sub> PO <sub>4</sub> : HP

Please send results to cmoehring@carmonaresources.com and mcarmona@carmonaresources.com

all-0402401K

Relinquished by: (Signature)	Received by: (Signature)	Date/Time	Relinquished by: (Signature)	Received by: (Signature)	Date/Time
<i>[Signature]</i>	<i>[Signature]</i>	1/15/26 11:42			



PHONE (575) 393-2326 ° 101 E. MARLAND ° HOBBS, NM 88240

---

January 21, 2026

RILEY PLOGGER

CARMONA RESOURCES

310 W WALL ST, SUITE 500

MIDLAND, TX 79701

RE: SEA SNAKE 35 #004H

Enclosed are the results of analyses for samples received by the laboratory on 01/15/26 11:16.

Cardinal Laboratories is accredited through Texas NELAP under certificate number TX-C25-00101. Accreditation applies to drinking water, non-potable water and solid and chemical materials. All accredited analytes are denoted by an asterisk (\*). For a complete list of accredited analytes and matrices visit the TCEQ website at [www.tceq.texas.gov/field/qa/lab\\_accred\\_certif.html](http://www.tceq.texas.gov/field/qa/lab_accred_certif.html).

Cardinal Laboratories is accredited through the State of Colorado Department of Public Health and Environment for:

Method EPA 552.2	Haloacetic Acids (HAA-5)
Method EPA 524.2	Total Trihalomethanes (TTHM)
Method EPA 524.4	Regulated VOCs (V1, V2, V3)

Accreditation applies to public drinking water matrices.

This report meets NELAP requirements and is made up of a cover page, analytical results, and a copy of the original chain-of-custody. If you have any questions concerning this report, please feel free to contact me.

Sincerely,

A handwritten signature in black ink that reads "Celey D. Keene".

Celey D. Keene

Lab Director/Quality Manager



PHONE (575) 393-2326 ° 101 E. MARLAND ° HOBBS, NM 88240

**Analytical Results For:**

CARMONA RESOURCES  
 RILEY PLOGGER  
 310 W WALL ST, SUITE 500  
 MIDLAND TX, 79701  
 Fax To:

Received:	01/15/2026	Sampling Date:	01/15/2026
Reported:	01/21/2026	Sampling Type:	Soil
Project Name:	SEA SNAKE 35 #004H	Sampling Condition:	Cool & Intact
Project Number:	3091	Sample Received By:	Shalyn Rodriguez
Project Location:	DEVON - LEA COUNTY, NM		

**Sample ID: HALO PIT BACKFILL (H260249-01)**

BTEX 8021B		mg/kg		Analyzed By: JH					
Analyte	Result	Reporting Limit	Analyzed	Method Blank	BS	% Recovery	True Value QC	RPD	Qualifier
Benzene*	<0.050	0.050	01/17/2026	ND	1.90	94.8	2.00	1.46	
Toluene*	<0.050	0.050	01/17/2026	ND	1.99	99.7	2.00	1.42	
Ethylbenzene*	<0.050	0.050	01/17/2026	ND	1.99	99.7	2.00	0.678	
Total Xylenes*	<0.150	0.150	01/17/2026	ND	5.92	98.7	6.00	0.701	
Total BTEX	<0.300	0.300	01/17/2026	ND					

Surrogate: 4-Bromofluorobenzene (PID) 97.4 % 70.4-141

Chloride, SM4500Cl-B		mg/kg		Analyzed By: HM					
Analyte	Result	Reporting Limit	Analyzed	Method Blank	BS	% Recovery	True Value QC	RPD	Qualifier
Chloride	32.0	16.0	01/16/2026	ND	432	108	400	0.00	

TPH 8015M		mg/kg		Analyzed By: MS					
Analyte	Result	Reporting Limit	Analyzed	Method Blank	BS	% Recovery	True Value QC	RPD	Qualifier
GRO C6-C10*	<10.0	10.0	01/17/2026	ND	201	101	200	0.437	
DRO >C10-C28*	<10.0	10.0	01/17/2026	ND	215	107	200	0.822	
EXT DRO >C28-C36	<10.0	10.0	01/17/2026	ND					

Surrogate: 1-Chlorooctane 100 % 52.4-130

Surrogate: 1-Chlorooctadecane 106 % 39.9-141

Cardinal Laboratories

\*=Accredited Analyte

PLEASE NOTE: Liability and Damages. Cardinal's liability and client's exclusive remedy for any claim arising, whether based in contract or tort, shall be limited to the amount paid by client for analyses. All claims, including those for negligence and any other cause whatsoever shall be deemed waived unless made in writing and received by Cardinal within thirty (30) days after completion of the applicable service. In no event shall Cardinal be liable for incidental or consequential damages, including, without limitation, business interruptions, loss of use, or loss of profits incurred by client, its subsidiaries, affiliates or successors arising out of or related to the performance of the services hereunder by Cardinal, regardless of whether such claim is based upon any of the above stated reasons or otherwise. Results relate only to the samples identified above. This report shall not be reproduced except in full with written approval of Cardinal Laboratories.

Celey D. Keene, Lab Director/Quality Manager



PHONE (575) 393-2326 ° 101 E. MARLAND ° HOBBS, NM 88240

Notes and Definitions

- QM-07 The spike recovery was outside acceptance limits for the MS and/or MSD. The batch was accepted based on acceptable LCS recovery.
ND Analyte NOT DETECTED at or above the reporting limit
RPD Relative Percent Difference
\*\* Samples not received at proper temperature of 6°C or below.
\*\*\* Insufficient time to reach temperature.
- Chloride by SM4500Cl-B does not require samples be received at or below 6°C
Samples reported on an as received basis (wet) unless otherwise noted on report

Cardinal Laboratories

\*=Accredited Analyte

PLEASE NOTE: Liability and Damages. Cardinal's liability and client's exclusive remedy for any claim arising, whether based in contract or tort, shall be limited to the amount paid by client for analyses. All claims, including those for negligence and any other cause whatsoever shall be deemed waived unless made in writing and received by Cardinal within thirty (30) days after completion of the applicable service. In no event shall Cardinal be liable for incidental or consequential damages, including, without limitation, business interruptions, loss of use, or loss of profits incurred by client, its subsidiaries, affiliates or successors arising out of or related to the performance of the services hereunder by Cardinal, regardless of whether such claim is based upon any of the above stated reasons or otherwise. Results relate only to the samples identified above. This report shall not be reproduced except in full with written approval of Cardinal Laboratories.

Celey D. Keene

Celey D. Keene, Lab Director/Quality Manager



Sante Fe Main Office  
Phone: (505) 476-3441

General Information  
Phone: (505) 629-6116

Online Phone Directory  
<https://www.emnrd.nm.gov/ocd/contact-us>

**State of New Mexico**  
**Energy, Minerals and Natural Resources**  
**Oil Conservation Division**  
**1220 S. St Francis Dr.**  
**Santa Fe, NM 87505**

QUESTIONS

Action 546858

**QUESTIONS**

Operator: DEVON ENERGY PRODUCTION COMPANY, LP 333 West Sheridan Ave. Oklahoma City, OK 73102	OGRID: 6137
	Action Number: 546858
	Action Type: [C-141] Remediation Closure Request C-141 (C-141-v-Closure)

**QUESTIONS**

<b>Prerequisites</b>	
Incident ID (n#)	nAPP2534534495
Incident Name	NAPP2534534495 SEA SNAKE 35 STATE #004H @ 30-025-42285
Incident Type	Oil Release
Incident Status	Remediation Closure Report Received
Incident Well	[30-025-42285] SEA SNAKE 35 STATE #004H

**Location of Release Source**

Please answer all the questions in this group.

Site Name	SEA SNAKE 35 STATE #004H
Date Release Discovered	12/08/2025
Surface Owner	State

**Incident Details**

Please answer all the questions in this group.

Incident Type	Oil Release
Did this release result in a fire or is the result of a fire	No
Did this release result in any injuries	No
Has this release reached or does it have a reasonable probability of reaching a watercourse	No
Has this release endangered or does it have a reasonable probability of endangering public health	No
Has this release substantially damaged or will it substantially damage property or the environment	No
Is this release of a volume that is or may with reasonable probability be detrimental to fresh water	No

**Nature and Volume of Release**

Material(s) released, please answer all that apply below. Any calculations or specific justifications for the volumes provided should be attached to the follow-up C-141 submission.

Crude Oil Released (bbls) Details	Cause: Equipment Failure   Well   Crude Oil   Released: 20 BBL   Recovered: 10 BBL   Lost: 10 BBL.
Produced Water Released (bbls) Details	Cause: Equipment Failure   Well   Produced Water   Released: 6 BBL   Recovered: 0 BBL   Lost: 6 BBL.
Is the concentration of chloride in the produced water >10,000 mg/l	Yes
Condensate Released (bbls) Details	Not answered.
Natural Gas Vented (Mcf) Details	Not answered.
Natural Gas Flared (Mcf) Details	Not answered.
Other Released Details	Not answered.
Are there additional details for the questions above (i.e. any answer containing Other, Specify, Unknown, and/or Fire, or any negative lost amounts)	Stuffing box leak allowed fluids to impact pad surface. Major notification sent via email to (R. Romero, M. Bratcher)

Sante Fe Main Office  
Phone: (505) 476-3441

General Information  
Phone: (505) 629-6116

Online Phone Directory  
<https://www.emnrd.nm.gov/ocd/contact-us>

**State of New Mexico**  
**Energy, Minerals and Natural Resources**  
**Oil Conservation Division**  
**1220 S. St Francis Dr.**  
**Santa Fe, NM 87505**

QUESTIONS, Page 2

Action 546858

**QUESTIONS (continued)**

Operator: DEVON ENERGY PRODUCTION COMPANY, LP 333 West Sheridan Ave. Oklahoma City, OK 73102	OGRID: 6137
	Action Number: 546858
	Action Type: [C-141] Remediation Closure Request C-141 (C-141-v-Closure)

**QUESTIONS**

<b>Nature and Volume of Release (continued)</b>	
Is this a gas only submission (i.e. only significant Mcf values reported)	<b>No, according to supplied volumes this does not appear to be a "gas only" report.</b>
Was this a major release as defined by Subsection A of 19.15.29.7 NMAC	<b>Yes</b>
Reasons why this would be considered a submission for a notification of a major release	<b>From paragraph A. "Major release" determine using: (1) an unauthorized release of a volume, excluding gases, of 25 barrels or more.</b>
<i>With the implementation of the 19.15.27 NMAC (05/25/2021), venting and/or flaring of natural gas (i.e. gas only) are to be submitted on the C-129 form.</i>	

**Initial Response**

*The responsible party must undertake the following actions immediately unless they could create a safety hazard that would result in injury.*

The source of the release has been stopped	True
The impacted area has been secured to protect human health and the environment	True
Released materials have been contained via the use of berms or dikes, absorbent pads, or other containment devices	True
All free liquids and recoverable materials have been removed and managed appropriately	True
If all the actions described above have not been undertaken, explain why	Not answered.

*Per Paragraph (4) of Subsection B of 19.15.29.8 NMAC the responsible party may commence remediation immediately after discovery of a release. If remediation has begun, please prepare and attach a narrative of actions to date in the follow-up C-141 submission. If remedial efforts have been successfully completed or if the release occurred within a lined containment area (see Subparagraph (a) of Paragraph (5) of Subsection A of 19.15.29.11 NMAC), please prepare and attach all information needed for closure evaluation in the follow-up C-141 submission.*

I hereby certify that the information given above is true and complete to the best of my knowledge and understand that pursuant to OCD rules and regulations all operators are required to report and/or file certain release notifications and perform corrective actions for releases which may endanger public health or the environment. The acceptance of a C-141 report by the OCD does not relieve the operator of liability should their operations have failed to adequately investigate and remediate contamination that pose a threat to groundwater, surface water, human health or the environment. In addition, OCD acceptance of a C-141 report does not relieve the operator of responsibility for compliance with any other federal, state, or local laws and/or regulations.

I hereby agree and sign off to the above statement	Name: James Raley Title: EHS Professional Email: jim.raley@dvn.com Date: 01/28/2026
--	--

Sante Fe Main Office  
Phone: (505) 476-3441

General Information  
Phone: (505) 629-6116

Online Phone Directory  
<https://www.emnrd.nm.gov/ocd/contact-us>

**State of New Mexico**  
**Energy, Minerals and Natural Resources**  
**Oil Conservation Division**  
**1220 S. St Francis Dr.**  
**Santa Fe, NM 87505**

QUESTIONS, Page 3

Action 546858

**QUESTIONS (continued)**

Operator: DEVON ENERGY PRODUCTION COMPANY, LP 333 West Sheridan Ave. Oklahoma City, OK 73102	OGRID: 6137
	Action Number: 546858
	Action Type: [C-141] Remediation Closure Request C-141 (C-141-v-Closure)

**QUESTIONS**

**Site Characterization**

Please answer all the questions in this group (only required when seeking remediation plan approval and beyond). This information must be provided to the appropriate district office no later than 90 days after the release discovery date.

What is the shallowest depth to groundwater beneath the area affected by the release in feet below ground surface (ft bgs)	Between 51 and 75 (ft.)
What method was used to determine the depth to ground water	NM OSE iWaters Database Search
Did this release impact groundwater or surface water	No
<b>What is the minimum distance, between the closest lateral extents of the release and the following surface areas:</b>	
A continuously flowing watercourse or any other significant watercourse	Greater than 5 (mi.)
Any lakebed, sinkhole, or playa lake (measured from the ordinary high-water mark)	Between 1000 (ft.) and ½ (mi.)
An occupied permanent residence, school, hospital, institution, or church	Between 1 and 5 (mi.)
A spring or a private domestic fresh water well used by less than five households for domestic or stock watering purposes	Between 1 and 5 (mi.)
Any other fresh water well or spring	Between 1 and 5 (mi.)
Incorporated municipal boundaries or a defined municipal fresh water well field	Greater than 5 (mi.)
A wetland	Between 1000 (ft.) and ½ (mi.)
A subsurface mine	Greater than 5 (mi.)
An (non-karst) unstable area	Greater than 5 (mi.)
Categorize the risk of this well / site being in a karst geology	Low
A 100-year floodplain	Between 1 and 5 (mi.)
Did the release impact areas not on an exploration, development, production, or storage site	No

**Remediation Plan**

Please answer all the questions that apply or are indicated. This information must be provided to the appropriate district office no later than 90 days after the release discovery date.

Requesting a remediation plan approval with this submission	Yes
<i>Attach a comprehensive report demonstrating the lateral and vertical extents of soil contamination associated with the release have been determined, pursuant to 19.15.29.11 NMAC and 19.15.29.13 NMAC.</i>	
Have the lateral and vertical extents of contamination been fully delineated	Yes
Was this release entirely contained within a lined containment area	No

**Soil Contamination Sampling:** (Provide the highest observable value for each, in milligrams per kilograms.)

Chloride (EPA 300.0 or SM4500 Cl B)	807
TPH (GRO+DRO+MRO) (EPA SW-846 Method 8015M)	663
GRO+DRO (EPA SW-846 Method 8015M)	536
BTEX (EPA SW-846 Method 8021B or 8260B)	0
Benzene (EPA SW-846 Method 8021B or 8260B)	0

Per Subsection B of 19.15.29.11 NMAC unless the site characterization report includes completed efforts at remediation, the report must include a proposed remediation plan in accordance with 19.15.29.12 NMAC, which includes the anticipated timelines for beginning and completing the remediation.

On what estimated date will the remediation commence	01/07/2026
On what date will (or did) the final sampling or liner inspection occur	01/07/2026
On what date will (or was) the remediation complete(d)	01/15/2026
What is the estimated surface area (in square feet) that will be reclaimed	0
What is the estimated volume (in cubic yards) that will be reclaimed	0
What is the estimated surface area (in square feet) that will be remediated	1983
What is the estimated volume (in cubic yards) that will be remediated	37

*These estimated dates and measurements are recognized to be the best guess or calculation at the time of submission and may (be) change(d) over time as more remediation efforts are completed.*

*The OCD recognizes that proposed remediation measures may have to be minimally adjusted in accordance with the physical realities encountered during remediation. If the responsible party has any need to significantly deviate from the remediation plan proposed, then it should consult with the division to determine if another remediation plan submission is required.*

Sante Fe Main Office  
Phone: (505) 476-3441

General Information  
Phone: (505) 629-6116

Online Phone Directory  
<https://www.emnrd.nm.gov/ocd/contact-us>

**State of New Mexico**  
**Energy, Minerals and Natural Resources**  
**Oil Conservation Division**  
**1220 S. St Francis Dr.**  
**Santa Fe, NM 87505**

QUESTIONS, Page 4

Action 546858

**QUESTIONS (continued)**

Operator: DEVON ENERGY PRODUCTION COMPANY, LP 333 West Sheridan Ave. Oklahoma City, OK 73102	OGRID: 6137
	Action Number: 546858
	Action Type: [C-141] Remediation Closure Request C-141 (C-141-v-Closure)

**QUESTIONS**

**Remediation Plan (continued)**

Please answer all the questions that apply or are indicated. This information must be provided to the appropriate district office no later than 90 days after the release discovery date.

**This remediation will (or is expected to) utilize the following processes to remediate / reduce contaminants:**

(Select all answers below that apply.)

(Ex Situ) Excavation and <b>off-site</b> disposal (i.e. dig and haul, hydrovac, etc.)	Yes
Which OCD approved facility will be used for <b>off-site</b> disposal	fEEM0112334510 HALFWAY DISPOSAL AND LANDFILL
<b>OR</b> which OCD approved well (API) will be used for <b>off-site</b> disposal	Not answered.
<b>OR</b> is the <b>off-site</b> disposal site, to be used, out-of-state	Not answered.
<b>OR</b> is the <b>off-site</b> disposal site, to be used, an NMED facility	Not answered.
(Ex Situ) Excavation and <b>on-site</b> remediation (i.e. On-Site Land Farms)	Not answered.
(In Situ) Soil Vapor Extraction	Not answered.
(In Situ) Chemical processing (i.e. Soil Shredding, Potassium Permanganate, etc.)	Not answered.
(In Situ) Biological processing (i.e. Microbes / Fertilizer, etc.)	Not answered.
(In Situ) Physical processing (i.e. Soil Washing, Gypsum, Disking, etc.)	Not answered.
Ground Water Abatement pursuant to 19.15.30 NMAC	Not answered.
OTHER (Non-listed remedial process)	Not answered.

Per Subsection B of 19.15.29.11 NMAC unless the site characterization report includes completed efforts at remediation, the report must include a proposed remediation plan in accordance with 19.15.29.12 NMAC, which includes the anticipated timelines for beginning and completing the remediation.

I hereby certify that the information given above is true and complete to the best of my knowledge and understand that pursuant to OCD rules and regulations all operators are required to report and/or file certain release notifications and perform corrective actions for releases which may endanger public health or the environment. The acceptance of a C-141 report by the OCD does not relieve the operator of liability should their operations have failed to adequately investigate and remediate contamination that pose a threat to groundwater, surface water, human health or the environment. In addition, OCD acceptance of a C-141 report does not relieve the operator of responsibility for compliance with any other federal, state, or local laws and/or regulations.

I hereby agree and sign off to the above statement	Name: James Raley Title: EHS Professional Email: jim.raley@dvn.com Date: 01/28/2026
--	--

The OCD recognizes that proposed remediation measures may have to be minimally adjusted in accordance with the physical realities encountered during remediation. If the responsible party has any need to significantly deviate from the remediation plan proposed, then it should consult with the division to determine if another remediation plan submission is required.

Sante Fe Main Office  
Phone: (505) 476-3441

General Information  
Phone: (505) 629-6116

Online Phone Directory  
<https://www.emnrd.nm.gov/ocd/contact-us>

**State of New Mexico**  
**Energy, Minerals and Natural Resources**  
**Oil Conservation Division**  
**1220 S. St Francis Dr.**  
**Santa Fe, NM 87505**

QUESTIONS, Page 5

Action 546858

**QUESTIONS (continued)**

Operator: DEVON ENERGY PRODUCTION COMPANY, LP 333 West Sheridan Ave. Oklahoma City, OK 73102	OGRID: 6137
	Action Number: 546858
	Action Type: [C-141] Remediation Closure Request C-141 (C-141-v-Closure)

**QUESTIONS**

<b>Deferral Requests Only</b>	
<i>Only answer the questions in this group if seeking a deferral upon approval this submission. Each of the following items must be confirmed as part of any request for deferral of remediation.</i>	
Requesting a deferral of the remediation closure due date with the approval of this submission	No

Sante Fe Main Office  
Phone: (505) 476-3441

General Information  
Phone: (505) 629-6116

Online Phone Directory  
<https://www.emnrd.nm.gov/ocd/contact-us>

**State of New Mexico**  
**Energy, Minerals and Natural Resources**  
**Oil Conservation Division**  
**1220 S. St Francis Dr.**  
**Santa Fe, NM 87505**

QUESTIONS, Page 6

Action 546858

**QUESTIONS (continued)**

Operator: DEVON ENERGY PRODUCTION COMPANY, LP 333 West Sheridan Ave. Oklahoma City, OK 73102	OGRID: 6137
	Action Number: 546858
	Action Type: [C-141] Remediation Closure Request C-141 (C-141-v-Closure)

**QUESTIONS**

<b>Sampling Event Information</b>	
Last sampling notification (C-141N) recorded	<b>539993</b>
Sampling date pursuant to Subparagraph (a) of Paragraph (1) of Subsection D of 19.15.29.12 NMAC	<b>01/08/2026</b>
What was the (estimated) number of samples that were to be gathered	<b>17</b>
What was the sampling surface area in square feet	<b>2131</b>

<b>Remediation Closure Request</b>	
<i>Only answer the questions in this group if seeking remediation closure for this release because all remediation steps have been completed.</i>	
Requesting a remediation closure approval with this submission	Yes
Have the lateral and vertical extents of contamination been fully delineated	Yes
Was this release entirely contained within a lined containment area	No
All areas reasonably needed for production or subsequent drilling operations have been stabilized, returned to the sites existing grade, and have a soil cover that prevents ponding of water, minimizing dust and erosion	Yes
What was the total surface area (in square feet) remediated	1983
What was the total volume (cubic yards) remediated	37
All areas not reasonably needed for production or subsequent drilling operations have been reclaimed to contain a minimum of four feet of non-waste contain earthen material with concentrations less than 600 mg/kg chlorides, 100 mg/kg TPH, 50 mg/kg BTEX, and 10 mg/kg Benzene	Yes
What was the total surface area (in square feet) reclaimed	0
What was the total volume (in cubic yards) reclaimed	0
Summarize any additional remediation activities not included by answers (above)	Remediation Complete

*The responsible party must attach information demonstrating they have complied with all applicable closure requirements and any conditions or directives of the OCD. This demonstration should be in the form of a comprehensive report (in .pdf format) including a scaled site map, sampling diagrams, relevant field notes, photographs of any excavation prior to backfilling, laboratory data including chain of custody documents of final sampling, and a narrative of the remedial activities. Refer to 19.15.29.12 NMAC.*

I hereby certify that the information given above is true and complete to the best of my knowledge and understand that pursuant to OCD rules and regulations all operators are required to report and/or file certain release notifications and perform corrective actions for releases which may endanger public health or the environment. The acceptance of a C-141 report by the OCD does not relieve the operator of liability should their operations have failed to adequately investigate and remediate contamination that pose a threat to groundwater, surface water, human health or the environment. In addition, OCD acceptance of a C-141 report does not relieve the operator of responsibility for compliance with any other federal, state, or local laws and/or regulations. The responsible party acknowledges they must substantially restore, reclaim, and re-vegetate the impacted surface area to the conditions that existed prior to the release or their final land use in accordance with 19.15.29.13 NMAC including notification to the OCD when reclamation and re-vegetation are complete.

I hereby agree and sign off to the above statement	Name: James Raley Title: EHS Professional Email: jim.raley@dmv.com Date: 01/28/2026
--	--

Sante Fe Main Office  
Phone: (505) 476-3441

General Information  
Phone: (505) 629-6116

Online Phone Directory  
<https://www.emnrd.nm.gov/ocd/contact-us>

**State of New Mexico**  
**Energy, Minerals and Natural Resources**  
**Oil Conservation Division**  
**1220 S. St Francis Dr.**  
**Santa Fe, NM 87505**

QUESTIONS, Page 7

Action 546858

**QUESTIONS (continued)**

Operator: DEVON ENERGY PRODUCTION COMPANY, LP 333 West Sheridan Ave. Oklahoma City, OK 73102	OGRID: 6137
	Action Number: 546858
	Action Type: [C-141] Remediation Closure Request C-141 (C-141-v-Closure)

**QUESTIONS**

<b>Reclamation Report</b>	
<i>Only answer the questions in this group if all reclamation steps have been completed.</i>	
Requesting a reclamation approval with this submission	No

Sante Fe Main Office  
Phone: (505) 476-3441

General Information  
Phone: (505) 629-6116

Online Phone Directory  
<https://www.emnrd.nm.gov/ocd/contact-us>

**State of New Mexico**  
**Energy, Minerals and Natural Resources**  
**Oil Conservation Division**  
**1220 S. St Francis Dr.**  
**Santa Fe, NM 87505**

CONDITIONS

Action 546858

**CONDITIONS**

Operator: DEVON ENERGY PRODUCTION COMPANY, LP 333 West Sheridan Ave. Oklahoma City, OK 73102	OGRID: 6137
	Action Number: 546858
	Action Type: [C-141] Remediation Closure Request C-141 (C-141-v-Closure)

**CONDITIONS**

Created By	Condition	Condition Date
nvez	Remediation has met 19.15.29 NMAC requirements. Soil impacts exceeding the reclamation standards have been left in place and are required to meet 19.15.29.13D (1) NMAC once the site is no longer reasonably needed for production or subsequent drilling ops.	3/23/2026