



2024 ANNUAL GROUNDWATER REPORT – K-27 Line Drip

Rio Arriba County, New Mexico

NMOCD Incident No.
nAUTOfAB000316

Prepared for:

El Paso CGP Company
1001 Louisiana Street
Houston, Texas 77002

Prepared by:

Stantec Consulting Services Inc.
11311 Aurora Avenue
Des Moines, IA 50322

March 2025

2024 ANNUAL GROUNDWATER REPORT – K-27 LINE DRIP

TABLE OF CONTENTS

LIST OF TABLES..... iii

LIST OF FIGURES iii

LIST OF APPENDICES iii

ABBREVIATIONS..... iv

1.0 INTRODUCTION..... 1

2.0 SITE BACKGROUND 1

3.0 GROUNDWATER SAMPLING ACTIVITIES 1

4.0 LNAPL RECOVERY 2

5.0 GROUNDWATER RESULTS..... 2

6.0 PLANNED FUTURE ACTIVITIES 3

2024 ANNUAL GROUNDWATER REPORT – K-27 LINE DRIP

LIST OF TABLES

Table 1 – Light Non-Aqueous Phase Liquid Recovery Summary

Table 2 – Groundwater Analytical Results

Table 3 – Groundwater Elevation Results

LIST OF FIGURES

Figure 1 – Site Location Map

Figure 2 – Site Plan

Figure 3 – Groundwater Analytical Results – May 16, 2024

Figure 4 – Groundwater Elevation Map – May 16, 2024

Figure 5 – Groundwater Analytical Results – November 14, 2024

LIST OF APPENDICES

Appendix A – Site History

Appendix B – NMOCD Notification of Site Activities

Appendix C – Waste Disposal Documentation

Appendix D – Groundwater Analytical Lab Reports

2024 ANNUAL GROUNDWATER REPORT – K-27 LINE DRIP

ABBREVIATIONS

µg/L	micrograms per liter
bgs	below ground surface
BTEX	benzene, toluene, ethylbenzene, and total xylenes
Envirotech	Envirotech, Inc.
EPA	United States Environmental Protection Agency
Eurofins	Eurofins Environment Testing Southeast, LLC
EPCGP	El Paso CGP Company
HydraSleeve	HydraSleeve™
LNAPL	light non-aqueous phase liquid
MDPE	mobile dual-phase extraction
NMOCD	New Mexico Oil Conservation Division
NMWQCC	New Mexico Water Quality Control Commission
Stantec	Stantec Consulting Services Inc.

2024 ANNUAL GROUNDWATER REPORT – K-27 LINE DRIP

1.0 INTRODUCTION

This 2024 Annual Groundwater Report has been prepared on behalf of El Paso CGP Company (EPCGP), a subsidiary of Kinder Morgan, Inc., by Stantec Consulting Services Inc. (Stantec). This report summarizes groundwater sampling and associated activities completed in 2024 at the K-27 Line Drip site (site; Meter Code LD072), located at Unit E, Section 4, Township 25 North, Range 6 West, in Rio Arriba County, New Mexico. The location of the site is Latitude 36.430553, Longitude -107.480164, depicted in Figure 1. The site has been assigned Incident Number nAUTOfAB000316 by the New Mexico Oil Conservation Division (NMOCD).

2.0 SITE BACKGROUND

Environmental Remediation activities at the site are being managed pursuant to the procedures set forth in the document entitled, "Remediation Plan for Groundwater Encountered During Pit Closure Activities" (Remediation Plan, El Paso Natural Gas Company/El Paso Field Services Company, 1995). This Remediation Plan was conditionally approved by the NMOCD in correspondence dated November 30, 1995; and the NMOCD approval conditions were adopted into EPCGP's program methods. The site is crossed by a pipeline operated by Enterprise.

The site is located on Federal land controlled by the United States Bureau of Land Management. An initial site assessment was completed in July 1994, and an excavation to approximately 12 feet below ground surface (bgs) was completed in August of 1994. Monitoring wells were installed in 1995 (MW-1), 2000 (MW-2 and MW-3), 2006 (TMW-4), 2016 (MW-2R, MW-3R, MW-5, MW-6, MW-7, and MW-8), and 2017 (MW-9 and MW-10); one test well was installed in 2018 (TW-1). TMW-4 was later re-designated MW-4. Monitoring wells MW-12 through MW-14 were installed in 2022. Soil boring SB-11 was also advanced in 2022. A detailed history of site activities is provided in Appendix A.

A Site Plan map depicting the locations of monitoring wells, soil borings, and current and historical site features is provided as Figure 2. Historically, light non-aqueous phase liquid (LNAPL) has been periodically encountered and recovered at the site. Mobile dual-phase extraction (MDPE) events to evaluate enhancement of LNAPL recovery were conducted in 2018. Quarterly LNAPL recovery began in the second quarter of 2020 and has continued through 2024. Currently, groundwater sampling of key monitoring wells not containing LNAPL is conducted on a semi-annual basis, and biennially from all EPCGP monitoring wells not containing LNAPL.

3.0 GROUNDWATER SAMPLING ACTIVITIES

Pursuant to the Remediation Plan, Stantec provided field work notifications via email to NMOCD on May 7, 2024, and October 28, 2024, prior to initiating groundwater sampling activities at the site. Copies of the 2024 NMOCD notifications are provided in Appendix B. On May 16, 2024, water levels were gauged at TW-1, MW-1, MW-2R, MW-3R, MW-4 through MW-10, and MW-12 through MW-14. Water levels were not measured during the

2024 ANNUAL GROUNDWATER REPORT – K-27 LINE DRIP

November 2024 sampling event due to a malfunction with the oil-water interface probe. The presence or absence of LNAPL, and where present its apparent in-well thickness, was confirmed with disposable bailers.

Groundwater samples were collected from MW-1, MW-3R, MW-6, MW-7, MW-8, MW-9, MW-10, MW-12, and MW-14 during the May and November 2024 sampling events, and also from MW-2R, MW-4, MW-5, and MW-13 during the May 2024 sampling event. Groundwater samples were collected using HydraSleeve™ (HydraSleeve) no-purge groundwater sampling devices. The HydraSleeve devices were set during the previous sampling event, using a suspension tether and stainless-steel weights. The HydraSleeve devices were positioned to collect a sample from the screened interval by setting the bottom of the sleeve approximately 0.5 foot above the bottom of the well screen.

Groundwater samples were placed into laboratory-supplied sample containers, packed on ice, and shipped under standard chain-of-custody protocols to Eurofins Environment Testing Southeast, LLC (Eurofins) in Pensacola, Florida where they were analyzed for the presence of benzene, toluene, ethylbenzene, and total xylenes (BTEX) using United States Environmental Protection Agency (EPA) Method 8260. One laboratory-supplied trip blank and one blind field duplicate were also collected during each groundwater sampling event.

Excess sample water was placed in a waste container and transported to the Envirotech, Inc. land farm (Envirotech) in Bloomfield, New Mexico for disposal. Waste disposal documentation is included as Appendix C.

4.0 LNAPL RECOVERY

As documented in EPCGP's letter dated January 5, 2021, quarterly LNAPL recovery activities were initiated in the second calendar quarter of 2020 and continued recovery events were performed in March, May, September, and November 2024. Documentation of NMOCD notification of site LNAPL recovery activities in 2024 is provided in Appendix B. LNAPL was observed in monitoring well MW-2R in September and November 2024. LNAPL was also observed in MW-6 and MW-8 in September 2024.

LNAPL recovery data is summarized in Table 1. During the groundwater sampling site visits in May and November 2024, the recovered LNAPL was disposed of with wastewater generated during the monitoring well sampling activities. Recovered LNAPL from the March and September 2024 site visits was disposed of at Envirotech (Appendix C).

5.0 GROUNDWATER RESULTS

Historical groundwater analytical results and well gauging data are summarized in Tables 2 and 3, respectively. Groundwater analytical data maps (Figures 3 and 5) and a groundwater elevation contour map (Figure 4) summarize the results of the 2024 groundwater sampling and gauging events. Due to the malfunctioning oil-water interface probe, reliable water level gauging data could not be collected and,

2024 ANNUAL GROUNDWATER REPORT – K-27 LINE DRIP

therefore, a groundwater elevation contour map was not produced. The groundwater analytical lab reports are included as Appendix D. The following summarizes the groundwater monitoring and sampling conducted during this reporting period:

- Groundwater elevations indicate the groundwater flow direction at the site was generally to the northeast during 2024 (see Figure 4).
- LNAPL was observed in MW-2R during the November 2024 sampling event; therefore, no groundwater samples were collected at this location during that event.
- The groundwater samples collected from MW-1 and MW-2R in May 2024, and from MW-1 and MW-9 in November 2024 exceeded the New Mexico Water Quality Control Commission (NMWQCC) standard (10 micrograms per liter [$\mu\text{g/L}$]) for benzene in groundwater. Concentrations of benzene were either below the NMWQCC standard or were not detected in the remaining site monitoring wells sampled in 2024.
- The groundwater sample collected from MW-2R in May 2024 exceeded the NMWQCC standard (750 $\mu\text{g/L}$) for toluene in groundwater. Concentrations of toluene were either below the NMWQCC standard or were not detected in the remaining site monitoring wells sampled in 2024.
- Concentrations of ethylbenzene were either below the NMWQCC standard (750 $\mu\text{g/L}$) or were not detected in the site monitoring wells sampled in 2024.
- The groundwater sample collected from MW-2R in May 2024 exceeded the NMWQCC standard (620 $\mu\text{g/L}$) for total xylenes in groundwater. Concentrations of total xylenes were either below the NMWQCC standard or were not detected in the remaining site monitoring wells sampled in 2024.
- A field duplicate was collected from monitoring well MW-1 in May and November 2024. No significant differences were noted between concentrations in the primary and duplicate samples for both groundwater sampling events.
- Detectable concentrations of BTEX constituents were not reported in the trip blanks collected and analyzed as part of the 2024 groundwater monitoring events.

6.0 PLANNED FUTURE ACTIVITIES

Based on the reduction in the amount of LNAPL present at the site in 2024, quarterly site visits will continue at the site in 2025 to facilitate removal of measurable LNAPL where it is present. If additional LNAPL recovery activities are planned, a work plan will be prepared and submitted to the NMOCD to detail these activities, and NMOCD will be notified prior to start of those activities.

Groundwater monitoring events will continue to be conducted on a semi-annual basis. Groundwater samples will be collected from key monitoring wells not containing LNAPL on a semi-annual basis, and biennially from all EPCGP monitoring wells not containing

2024 ANNUAL GROUNDWATER REPORT – K-27 LINE DRIP

LNAPL. The groundwater samples will be analyzed for BTEX constituents using EPA Method 8260. A field duplicate and trip blank will also be collected during each groundwater sampling event. The next site-wide sampling event is scheduled to be conducted in the second calendar quarter of 2025.

The activities conducted in 2025, and their results, will be summarized in the 2025 Annual Report, to be submitted by April 1, 2026.

TABLES

TABLE 1 – LIGHT NON-AQUEOUS PHASE LIQUID RECOVERY SUMMARY

TABLE 2 – GROUNDWATER ANALYTICAL RESULTS

TABLE 3 – GROUNDWATER ELEVATION RESULTS

**TABLE 1
LIGHT NON-AQUEOUS PHASE LIQUID RECOVERY SUMMARY**

K-27 Line Drip						
Date	Depth to LNAPL (Feet)	Depth to Water (Feet)	Measured Thickness (Feet)	LNAPL Recovered (gal)	Water Recovered (gal)	Recovery Type
Well ID - MW-1						
11/12/2020	39.47	39.49	0.02	<0.01	0.02	manual
8/23/2021	39.89	39.89	<0.01	<0.01	0.37	manual
11/11/2021	39.49	39.51	0.02	<0.01	0.39	manual
8/2/2022	39.15	39.16	0.01	0.00	0.00	manual
Total:				<0.01	0.78	
Well ID - MW-2R						
10/15/2016	37.62	37.97	0.35	0.06	<0.01	manual
6/7/2017	36.53	36.94	0.41	0.07	<0.01	manual
7/26/2017	32.24	32.81	0.57	2.2	348	Mobile DPE*
11/14/2017	36.96	37.76	0.8	Trace	<0.01	manual
5/15/2018	36.48	36.86	0.38	<0.01	<0.01	manual
10/21/2018	37.64	38.85	1.21	0.1	<0.01	manual
5/21/2019	36.70	37.35	0.65	0.13	0.32	manual
11/10/2019	37.65	38.82	1.17	0.82	0.29	manual
5/11/2020	37.26	38.24	0.98	0.84	0.47	manual
8/19/2020	38.24	39.75	1.51	1.44	0.86	manual
11/12/2020	38.62	38.69	0.07	<0.01	0.06	manual
3/18/2021	37.00	38.00	1.00	0.59	0.57	manual
5/19/2021	37.92	39.03	1.11	0.48	0.07	manual
8/23/2021	38.92	39.80	0.88	0.38	1.23	manual
11/11/2021	38.67	38.78	0.11	0.05	0.48	manual
3/21/2022	37.81	38.69	0.88	0.46	0.21	manual
5/22/2022	37.93	38.94	1.01	0.65	0.21	manual
8/2/2022	38.35	38.70	0.35	0.18	0.20	manual
11/6/2022	37.54	37.85	0.31	0.16	0.63	manual
8/30/2023	37.94	37.95	0.01	<0.01	0.14	manual
11/12/2023	37.75	38.24	0.49	0.38	0.49	manual
9/24/2024	38.33	38.57	0.24	0.07	1.29	manual
11/14/2024	NM	NM	0.25	0.17	0.33	manual
Total:				9.2	356	
Well ID - MW-6						
10/21/2018	40.40	40.49	0.09	<0.01	0.10	manual
11/12/2020	41.04	41.09	0.05	<0.01	<0.01	manual
8/23/2021	41.29	41.93	0.64	0.13	0.43	manual
11/11/2021	41.02	41.39	0.37	0.14	0.13	manual
3/21/2022	40.43	40.58	0.15	0.02	0.22	manual
5/22/2022	40.54	40.80	0.26	0.01	0.06	manual
8/2/2022	40.98	41.12	0.14	0.01	0.04	manual
9/24/2024	40.80	40.84	0.04	0.03	0.52	manual
Total:				0.34	1.50	

**TABLE 1
LIGHT NON-AQUEOUS PHASE LIQUID RECOVERY SUMMARY**

K-27 Line Drip						
Date	Depth to LNAPL (Feet)	Depth to Water (Feet)	Measured Thickness (Feet)	LNAPL Recovered (gal)	Water Recovered (gal)	Recovery Type
Well ID - MW-7						
5/19/2021	38.83	39.05	0.22	0.01	0.07	manual
8/23/2021	39.66	40.10	0.44	0.08	0.48	manual
Total:				0.09	0.55	
Well ID - MW-8						
10/27/2018	37.15	37.57	0.42	0.05	<0.01	manual
11/12/2020	37.84	38.04	0.20	0.26	0.03	manual
3/18/2021	37.58	37.60	0.02	<0.01	0.24	manual
5/19/2021	37.64	37.72	0.08	<0.01	0.05	manual
8/23/2021	38.27	39.30	1.03	0.30	0.82	manual
11/11/2021	37.95	38.54	0.59	0.20	0.33	manual
3/21/2022	37.47	37.48	0.01	<0.01	0.05	manual
9/24/2024	37.81	37.82	0.01	<0.01	0.05	manual
Total:				0.81	1.57	
Well ID - MW-9						
10/14/2017	35.75	38.14	2.39	0.25	0.1	manual
5/15/2018	37.16	37.65	0.49	0.2	<0.01	manual
10/21/2018	38.34	39.35	1.01	8.3	301	Mobile DPE*
5/21/2019	37.44	37.99	0.55	0.11	0.1	manual
11/10/2019	38.39	39.70	1.31	0.95	0.24	manual
5/11/2020	37.46	38.85	1.39	0.69	0.40	manual
8/19/2020	38.50	40.59	2.09	2.76	0.85	manual
11/12/2020	39.02	40.36	1.34	2.13	0.25	manual
3/18/2021	37.75	38.75	1.00	0.58	0.16	manual
5/19/2021	38.67	39.58	0.91	0.48	0.11	manual
8/23/2021	39.35	41.04	1.69	2.09	0.61	manual
11/11/2021	39.15	40.10	0.95	0.73	0.34	manual
3/21/2022	38.65	38.95	0.30	0.27	0.20	manual
5/22/2022	38.76	39.30	0.54	0.35	0.16	manual
8/2/2022	38.95	39.51	0.56	1.07	0.44	manual
11/6/2022	38.28	38.29	0.01	<0.01	0.16	manual
5/20/2023	37.45	37.54	0.09	0.02	0.46	manual
8/30/2023	38.64	38.70	0.06	<0.01	0.62	manual
Total:				21.0	305	

Notes:

gal = gallons.

* = Mobile Dual Phase Extraction (DPE) includes calculated recovered hydrocarbon vapors.

LNAPL = Light non-aqueous phase liquid

NM = Not Measured due to oil-water interface probe malfunction. In-well thickness estimated by transparent disposable bailer.

LNAPL recovery data for 2012 and previous years documented in previously-submitted reports.

TABLE 2 - GROUNDWATER ANALYTICAL RESULTS

K-27 Line Drip					
Location	Date	Benzene (µg/L)	Toluene (µg/L)	Ethylbenzene (µg/L)	Total Xylenes (µg/L)
NMWQCC Standards:		10	750	750	620
MW-1	11/04/96	996	2170	204	1520
MW-1	02/05/97	207	613	168	1010
MW-1	05/07/97	41.8	114	98	500
MW-1	08/08/97	1690	2980	298	1930
MW-1	11/07/97	533	1210	267	1720
MW-1	02/26/98	NS	NS	NS	NS
MW-1	02/24/99	NS	NS	NS	NS
MW-1	08/19/99	179	379	79	777
MW-1	11/10/99	39	95	56	390
MW-1	09/05/00	NS	NS	NS	NS
MW-1	10/06/00	NS	NS	NS	NS
MW-1	07/03/01	NS	NS	NS	NS
MW-1	09/04/01	NS	NS	NS	NS
MW-1	09/24/01	NS	NS	NS	NS
MW-1	04/01/02	NS	NS	NS	NS
MW-1	07/15/02	NS	NS	NS	NS
MW-1	10/08/02	NS	NS	NS	NS
MW-1	01/27/03	NS	NS	NS	NS
MW-1	04/26/03	NS	NS	NS	NS
MW-1	07/17/03	NS	NS	NS	NS
MW-1	10/13/03	NS	NS	NS	NS
MW-1	01/19/04	NS	NS	NS	NS
MW-1	04/20/04	NS	NS	NS	NS
MW-1	07/27/04	NS	NS	NS	NS
MW-1	10/20/04	NS	NS	NS	NS
MW-1	01/25/05	NS	NS	NS	NS
MW-1	04/14/05	NS	NS	NS	NS
MW-1	07/19/05	NS	NS	NS	NS
MW-1	10/12/05	NS	NS	NS	NS
MW-1	10/21/05	NS	NS	NS	NS
MW-1	01/23/06	NS	NS	NS	NS
MW-1	04/28/06	NS	NS	NS	NS
MW-1	07/26/06	NS	NS	NS	NS
MW-1	11/07/06	NS	NS	NS	NS
MW-1	01/17/07	NS	NS	NS	NS
MW-1	04/24/07	NS	NS	NS	NS
MW-1	07/31/07	NS	NS	NS	NS
MW-1	10/25/07	NS	NS	NS	NS
MW-1	01/25/08	NS	NS	NS	NS

TABLE 2 - GROUNDWATER ANALYTICAL RESULTS

K-27 Line Drip					
Location	Date	Benzene (µg/L)	Toluene (µg/L)	Ethylbenzene (µg/L)	Total Xylenes (µg/L)
NMWQCC Standards:		10	750	750	620
MW-1	04/18/08	NS	NS	NS	NS
MW-1	07/23/08	NS	NS	NS	NS
MW-1	10/08/08	7.3	3.9	20.2	68.7
MW-1	10/13/08	NS	NS	NS	NS
MW-1	01/16/09	NS	NS	NS	NS
MW-1	04/06/09	NS	NS	NS	NS
MW-1	08/25/09	NS	NS	NS	NS
MW-1	11/03/09	355	69.3	45.8	259
MW-1	02/16/10	NS	NS	NS	NS
MW-1	05/24/10	NS	NS	NS	NS
MW-1	09/27/10	NS	NS	NS	NS
MW-1	11/08/10	138	29.4	43.9	183
MW-1	02/01/11	NS	NS	NS	NS
MW-1	05/02/11	NS	NS	NS	NS
MW-1	09/23/11	NS	NS	NS	NS
MW-1	11/10/11	71.8	57.5	5	62.2
MW-1	02/22/12	NS	NS	NS	NS
MW-1	05/15/12	NS	NS	NS	NS
MW-1	06/05/13	350	61	15	220
MW-1	09/10/13	150	32	7	83
MW-1	12/11/13	150	100	13	120
MW-1	04/04/14	220	51	20	150
MW-1	10/22/14	140	53	5.2	73
MW-1	05/28/15	110	75	13	97
MW-1	11/21/15	65	17	2.1	28
MW-1	04/17/16	6.1	5.9	<1.0	10
MW-1	10/15/16	2.0	<5.0	<1.0	6.9
MW-1	06/07/17	52	18	5.6	38
MW-1	11/14/17	190	98	8.9	87
MW-1	05/15/18	22	27	<1.0	19
DUP-01(MW-1)*	05/15/18	61	74	2.2	51
MW-1	10/27/18	42	12	4.6	31
DUP-01(MW-1)*	10/27/18	38	9.1	3.3	23
MW-1	05/21/19	72	47	8.3	140
MW-1	11/10/19	140	54	1.9	52
MW-1	05/12/20	340	220	19	370
MW-1	11/12/20	NS	NS	NS	NS
MW-1	03/18/21	NS	NS	NS	NS
MW-1	05/19/21	260	52	4.1	72

TABLE 2 - GROUNDWATER ANALYTICAL RESULTS

K-27 Line Drip					
Location	Date	Benzene (µg/L)	Toluene (µg/L)	Ethylbenzene (µg/L)	Total Xylenes (µg/L)
NMWQCC Standards:		10	750	750	620
DUP-01(MW-1)*	05/19/21	250	50	4.1	72
MW-1	08/23/21	NS	NS	NS	NS
MW-1	11/11/21	NS	NS	NS	NS
MW-1	05/22/22	180	21	1.3	28
MW-1	11/06/22	190	88	3.6	120
MW-1	03/29/23	NS	NS	NS	NS
MW-1	05/20/23	9.3	3.5	<1.0	<10
DUP-01(MW-1)*	05/20/23	7.8	2.9	<1.0	<10
MW-1	08/30/23	NS	NS	NS	NS
MW-1	11/12/23	230	120	4.8	58
DUP-01(MW-1)*	11/12/23	200	99	3.7	44
MW-1	05/16/24	180	58	1.5	61
DUP-01(MW-1)*	05/16/24	180	71	1.5	70
MW-1	11/14/24	260	150	6.4	76
DUP-01(MW-1)*	11/14/24	280	170	7.8	93
MW-2	08/31/00	5500	14000	670	5800
MW-2	09/05/00	NS	NS	NS	NS
MW-2	10/06/00	NS	NS	NS	NS
MW-2	07/03/01	NS	NS	NS	NS
MW-2	09/04/01	NS	NS	NS	NS
MW-2	09/24/01	NS	NS	NS	NS
MW-2	01/02/02	NS	NS	NS	NS
MW-2	04/01/02	NS	NS	NS	NS
MW-2	07/15/02	NS	NS	NS	NS
MW-2	10/08/02	NS	NS	NS	NS
MW-2	01/27/03	NS	NS	NS	NS
MW-2	04/26/03	NS	NS	NS	NS
MW-2	07/17/03	NS	NS	NS	NS
MW-2	10/13/03	NS	NS	NS	NS
MW-2	01/19/04	NS	NS	NS	NS
MW-2	04/20/04	NS	NS	NS	NS
MW-2	07/27/04	NS	NS	NS	NS
MW-2	10/20/04	NS	NS	NS	NS
MW-2	01/25/05	NS	NS	NS	NS
MW-2	04/14/05	NS	NS	NS	NS
MW-2	07/19/05	NS	NS	NS	NS
MW-2	10/21/05	NS	NS	NS	NS
MW-2	01/23/06	NS	NS	NS	NS
MW-2	04/28/06	NS	NS	NS	NS

TABLE 2 - GROUNDWATER ANALYTICAL RESULTS

K-27 Line Drip					
Location	Date	Benzene (µg/L)	Toluene (µg/L)	Ethylbenzene (µg/L)	Total Xylenes (µg/L)
NMWQCC Standards:		10	750	750	620
MW-2	07/26/06	NS	NS	NS	NS
MW-2	11/07/06	NS	NS	NS	NS
MW-2	01/17/07	NS	NS	NS	NS
MW-2	04/24/07	NS	NS	NS	NS
MW-2	07/31/07	NS	NS	NS	NS
MW-2	10/25/07	NS	NS	NS	NS
MW-2	01/25/08	NS	NS	NS	NS
MW-2	04/18/08	NS	NS	NS	NS
MW-2	07/23/08	NS	NS	NS	NS
MW-2	10/13/08	NS	NS	NS	NS
MW-2	01/16/09	NS	NS	NS	NS
MW-2	04/06/09	NS	NS	NS	NS
MW-2	08/25/09	NS	NS	NS	NS
MW-2	11/03/09	223	1070	532	2590
MW-2	02/16/10	NS	NS	NS	NS
MW-2	05/24/10	NS	NS	NS	NS
MW-2	09/27/10	NS	NS	NS	NS
MW-2	11/08/10	152	547	471	2190
MW-2	02/01/11	NS	NS	NS	NS
MW-2	05/02/11	NS	NS	NS	NS
MW-2	09/23/11	NS	NS	NS	NS
MW-2	11/10/11	31.9	101	156	446
MW-2	02/22/12	NS	NS	NS	NS
MW-2	05/15/12	NS	NS	NS	NS
MW-2	06/05/13	NS	NS	NS	NS
MW-2	09/10/13	NS	NS	NS	NS
MW-2	12/11/13	NS	NS	NS	NS
MW-2	04/04/14	NS	NS	NS	NS
MW-2 abandoned and replaced with MW-2R on September 26, 2016					
MW-2R	10/15/16	NS	NS	NS	NS
MW-2R	06/07/17	NS	NS	NS	NS
MW-2R	07/26/17	NS	NS	NS	NS
MW-2R	11/14/17	NS	NS	NS	NS
MW-2R	05/15/18	NS	NS	NS	NS
MW-2R	10/27/18	35	140	65	250
MW-2R	05/21/19	NS	NS	NS	NS
MW-2R	11/10/19	NS	NS	NS	NS
MW-2R	05/12/20	NS	NS	NS	NS
MW-2R	11/12/20	NS	NS	NS	NS

TABLE 2 - GROUNDWATER ANALYTICAL RESULTS

K-27 Line Drip					
Location	Date	Benzene (µg/L)	Toluene (µg/L)	Ethylbenzene (µg/L)	Total Xylenes (µg/L)
NMWQCC Standards:		10	750	750	620
MW-2R	03/18/21	NS	NS	NS	NS
MW-2R	05/19/21	NS	NS	NS	NS
MW-2R	08/23/21	NS	NS	NS	NS
MW-2R	11/11/21	NS	NS	NS	NS
MW-2R	05/22/22	NS	NS	NS	NS
MW-2R	11/06/22	NS	NS	NS	NS
MW-2R	05/20/23	NS	NS	NS	NS
MW-2R	11/12/23	NS	NS	NS	NS
MW-2R	05/16/24	210	1300	250	1700
MW-2R	11/14/24	NS	NS	NS	NS
MW-3	09/05/00	<0.5	<0.5	<0.5	<0.5
MW-3	07/03/01	<0.5	<0.5	<0.5	<0.5
MW-3	09/04/01	NS	NS	NS	NS
MW-3	09/24/01	NS	NS	NS	NS
MW-3	04/01/02	NS	NS	NS	NS
MW-3	07/15/02	NS	NS	NS	NS
MW-3	10/08/02	NS	NS	NS	NS
MW-3	07/17/03	NS	NS	NS	NS
MW-3	10/13/03	NS	NS	NS	NS
MW-3	01/19/04	NS	NS	NS	NS
MW-3	04/20/04	NS	NS	NS	NS
MW-3	07/27/04	NS	NS	NS	NS
MW-3	10/20/04	NS	NS	NS	NS
MW-3	01/25/05	NS	NS	NS	NS
MW-3	04/14/05	NS	NS	NS	NS
MW-3	07/19/05	NS	NS	NS	NS
MW-3	10/21/05	<1	<1	<1	<2
MW-3	01/23/06	NS	NS	NS	NS
MW-3	04/28/06	NS	NS	NS	NS
MW-3	07/26/06	NS	NS	NS	NS
MW-3	11/07/06	1.1	1.6	0.42 J	2.3
MW-3	01/17/07	NS	NS	NS	NS
MW-3	04/24/07	NS	NS	NS	NS
MW-3	07/31/07	NS	NS	NS	NS
MW-3	10/25/07	<1	<1	<1	<2
MW-3	01/25/08	NS	NS	NS	NS
MW-3	04/18/08	NS	NS	NS	NS
MW-3	07/23/08	NS	NS	NS	NS
MW-3	10/08/08	<2	<2	<2	<6

TABLE 2 - GROUNDWATER ANALYTICAL RESULTS

K-27 Line Drip					
Location	Date	Benzene (µg/L)	Toluene (µg/L)	Ethylbenzene (µg/L)	Total Xylenes (µg/L)
NMWQCC Standards:		10	750	750	620
MW-3	10/13/08	NS	NS	NS	NS
MW-3	01/16/09	NS	NS	NS	NS
MW-3	04/06/09	NS	NS	NS	NS
MW-3	08/25/09	NS	NS	NS	NS
MW-3	11/03/09	<1	<1	<1	<2
MW-3	02/16/10	NS	NS	NS	NS
MW-3	05/24/10	NS	NS	NS	NS
MW-3	09/27/10	NS	NS	NS	NS
MW-3	11/08/10	<2	<2	<2	<6
MW-3	02/01/11	NS	NS	NS	NS
MW-3	05/02/11	NS	NS	NS	NS
MW-3	09/23/11	NS	NS	NS	NS
MW-3	11/10/11	<1	<1	<1	<3
MW-3	02/22/12	NS	NS	NS	NS
MW-3	05/15/12	NS	NS	NS	NS
MW-3	06/05/13	<0.14	<0.30	<0.20	<0.23
MW-3	09/10/13	NS	NS	NS	NS
MW-3	12/11/13	NS	NS	NS	NS
MW-3	04/04/14	NS	NS	NS	NS
MW-3	10/22/14	NS	NS	NS	NS
MW-3	05/28/15	NS	NS	NS	NS
MW-3	11/21/15	NS	NS	NS	NS
MW-3	04/17/16	NS	NS	NS	NS
MW-3 abandoned and replaced with MW-3R on September 26, 2016					
MW-3R	10/15/16	<1.0	<5.0	<1.0	<5.0
MW-3R	06/07/17	<1.0	<5.0	<1.0	<5.0
MW-3R	11/14/17	<1.0	<1.0	<1.0	<10
MW-3R	05/15/18	<1.0	<1.0	<1.0	<10
MW-3R	10/27/18	<1.0	<1.0	<1.0	<10
MW-3R	05/21/19	<1.0	<1.0	<1.0	<10
MW-3R	11/10/19	<1.0	<1.0	<1.0	<10
MW-3R	05/12/20	<1.0	<1.0	<1.0	<10
MW-3R	11/12/20	<1.0	<1.0	<1.0	<10
MW-3R	05/19/21	<1.0	<1.0	<1.0	<10
MW-3R	11/11/21	<1.0	<1.0	<1.0	<10
MW-3R	05/22/22	<1.0	<1.0	<1.0	<10
MW-3R	11/06/22	<1.0	<1.0	<1.0	<10
MW-3R	05/20/23	<1.0	<1.0	<1.0	<10
MW-3R	11/12/23	<1.0	<1.0	<1.0	<10

TABLE 2 - GROUNDWATER ANALYTICAL RESULTS

K-27 Line Drip					
Location	Date	Benzene (µg/L)	Toluene (µg/L)	Ethylbenzene (µg/L)	Total Xylenes (µg/L)
NMWQCC Standards:		10	750	750	620
MW-3R	05/16/24	<1.0	<1.0	<1.0	<10
MW-3R	11/14/24	<1.0	<1.0	<1.0	<10
MW-4	11/08/06	<1	<1	<1	<2
MW-4	01/17/07	NS	NS	NS	NS
MW-4	04/24/07	NS	NS	NS	NS
MW-4	07/31/07	NS	NS	NS	NS
MW-4	10/25/07	<1	<1	<1	<2
MW-4	01/25/08	NS	NS	NS	NS
MW-4	04/18/08	NS	NS	NS	NS
MW-4	07/23/08	NS	NS	NS	NS
MW-4	10/08/08	<2	<2	<2	<6
MW-4	10/13/08	NS	NS	NS	NS
MW-4	01/16/09	NS	NS	NS	NS
MW-4	04/06/09	NS	NS	NS	NS
MW-4	08/25/09	NS	NS	NS	NS
MW-4	11/03/09	<1	<1	<1	<2
MW-4	02/16/10	NS	NS	NS	NS
MW-4	05/24/10	NS	NS	NS	NS
MW-4	09/27/10	NS	NS	NS	NS
MW-4	11/08/10	<2	<2	<2	<6
MW-4	02/01/11	NS	NS	NS	NS
MW-4	05/02/11	NS	NS	NS	NS
MW-4	09/23/11	NS	NS	NS	NS
MW-4	11/10/11	<1	<1	<1	<3
MW-4	02/22/12	NS	NS	NS	NS
MW-4	05/15/12	NS	NS	NS	NS
MW-4	06/05/13	<0.14	<0.30	<0.20	<0.23
MW-4	09/10/13	<0.14	<0.30	<0.20	<0.23
MW-4	12/11/13	<0.20	<0.38	<0.20	<0.65
MW-4	04/14/14	<0.20	<0.38	<0.20	<0.65
MW-4	10/22/14	<0.38	<0.70	<0.50	<1.6
MW-4	05/28/15	<1.0	<5.0	<1.0	<5.0
MW-4	11/21/15	<1.0	<1.0	<1.0	<3.0
MW-4	04/17/16	<1.0	<5.0	<1.0	<5.0
MW-4	10/15/16	<1.0	<5.0	<1.0	<5.0
MW-4	06/07/17	<1.0	<5.0	<1.0	<5.0
MW-4	11/14/17	<1.0	<1.0	<1.0	<10
MW-4	05/15/18	NS	NS	NS	NS
MW-4	10/27/18	NS	NS	NS	NS

TABLE 2 - GROUNDWATER ANALYTICAL RESULTS

K-27 Line Drip					
Location	Date	Benzene (µg/L)	Toluene (µg/L)	Ethylbenzene (µg/L)	Total Xylenes (µg/L)
NMWQCC Standards:		10	750	750	620
MW-4	05/21/19	NS	NS	NS	NS
MW-4	11/10/19	NS	NS	NS	NS
MW-4	05/12/20	<1.0	<1.0	<1.0	<10
MW-4	11/12/20	NS	NS	NS	NS
MW-4	05/19/21	NS	NS	NS	NS
MW-4	11/11/21	NS	NS	NS	NS
MW-4	05/22/22	<1.0	<1.0	<1.0	<10
MW-4	11/06/22	NS	NS	NS	NS
MW-4	05/20/23	NS	NS	NS	NS
MW-4	11/12/23	NS	NS	NS	NS
MW-4	05/16/24	<1.0	<1.0	<1.0	<10
MW-4	11/14/24	NS	NS	NS	NS
MW-5	10/15/16	<1.0	<5.0	<1.0	<5.0
MW-5	06/07/17	<1.0	<5.0	<1.0	<5.0
MW-5	11/14/17	<1.0	<1.0	<1.0	<10
MW-5	05/15/18	NS	NS	NS	NS
MW-5	10/27/18	NS	NS	NS	NS
MW-5	05/21/19	NS	NS	NS	NS
MW-5	11/10/19	NS	NS	NS	NS
MW-5	05/12/20	<1.0	<1.0	<1.0	<10
MW-5	11/12/20	NS	NS	NS	NS
MW-5	05/19/21	NS	NS	NS	NS
MW-5	11/11/21	NS	NS	NS	NS
MW-5	05/22/22	<1.0	<1.0	<1.0	<10
MW-5	11/06/22	NS	NS	NS	NS
MW-5	05/20/23	NS	NS	NS	NS
MW-5	11/12/23	NS	NS	NS	NS
MW-5	05/16/24	<1.0	<1.0	<1.0	<10
MW-5	11/14/24	NS	NS	NS	NS
MW-6	10/15/16	4.5	<5.0	4.5	59
MW-6	06/07/17	1.4	<5.0	<1.0	<5.0
MW-6	11/14/17	<1.0	<1.0	1.7	170
MW-6	05/15/18	<1.0	<1.0	<1.0	<10
MW-6	10/27/18	<1.0	<1.0	<1.0	<10
MW-6	05/21/19	NS	NS	NS	NS
MW-6	11/10/19	NS	NS	NS	NS
MW-6	05/12/20	<1.0	<1.0	<1.0	<10
MW-6	11/12/20	NS	NS	NS	NS

TABLE 2 - GROUNDWATER ANALYTICAL RESULTS

K-27 Line Drip					
Location	Date	Benzene (µg/L)	Toluene (µg/L)	Ethylbenzene (µg/L)	Total Xylenes (µg/L)
NMWQCC Standards:		10	750	750	620
MW-6	05/19/21	<1.0	<1.0	<1.0	<10
MW-6	11/11/21	NS	NS	NS	NS
MW-6	05/22/22	NS	NS	NS	NS
MW-6	11/06/22	<1.0	<1.0	15	680
MW-6	05/20/23	<1.0	<1.0	3.7	34
MW-6	11/12/23	1.9	<1.0	12	170
MW-6	05/16/24	1.8	<1.0	18	90
MW-6	11/14/24	<1.0	<1.0	<1.0	<10
MW-7	10/15/16	2.2	<5.0	<1.0	<5.0
MW-7	06/07/17	<1.0	<5.0	<1.0	<5.0
MW-7	11/14/17	<1.0	<1.0	<1.0	<10
MW-7	05/15/18	<1.0	<1.0	<1.0	<10
MW-7	10/27/18	<1.0	<1.0	<1.0	<10
MW-7	05/21/19	1.6	<1.0	<1.0	<10
MW-7	11/10/19	<1.0	<1.0	<1.0	<10
MW-7	05/12/20	5.5	<1.0	<1.0	<10
DUP-01(MW-7)*	05/12/20	6.5	<1.0	<1.0	<10
MW-7	11/12/20	<1.0	<1.0	<1.0	<10
DUP-01(MW-7)*	11/12/20	<1.0	<1.0	<1.0	<10
MW-7	05/19/21	NS	NS	NS	NS
MW-7	11/11/21	<1.0	<1.0	2.4	30
DUP-01(MW-7)*	11/11/21	<1.0	<1.0	3.2	35
MW-7	05/22/22	<1.0	<1.0	<1.0	<10
DUP-01(MW-7)*	05/22/22	<1.0	<1.0	<1.0	<10
MW-7	11/06/22	<1.0	<1.0	<1.0	<10
DUP-01(MW-7)*	11/06/22	<1.0	<1.0	<1.0	<10
MW-7	05/20/23	1.7	<1.0	<1.0	<10
MW-7	11/12/23	6.4	<1.0	<1.0	<10
MW-7	05/16/24	7.9	<1.0	<1.0	<10
MW-7	11/14/24	9.4	1.2	<1.0	<10
MW-8	10/15/16	4.8	42	23	230
MW-8	06/07/17	<1.0	<5.0	2	15
MW-8	11/14/17	<1.0	<1.0	<1.0	<10
MW-8	05/15/18	NS	NS	NS	NS
MW-8	10/21/18	NS	NS	NS	NS
MW-8	10/27/18	NS	NS	NS	NS
MW-8	05/21/19	<1.0	<1.0	<1.0	<10
DUP-01(MW-8)*	05/21/19	<1.0	<1.0	<1.0	<10

TABLE 2 - GROUNDWATER ANALYTICAL RESULTS

K-27 Line Drip					
Location	Date	Benzene (µg/L)	Toluene (µg/L)	Ethylbenzene (µg/L)	Total Xylenes (µg/L)
NMWQCC Standards:		10	750	750	620
MW-8	11/10/19	<1.0	<1.0	<1.0	<10
DUP-01(MW-8)*	11/10/19	<1.0	<1.0	<1.0	<10
MW-8	05/12/20	<1.0	3.6	1.8	36
MW-8	11/12/20	NS	NS	NS	NS
MW-8	05/19/21	NS	NS	NS	NS
MW-8	11/11/21	NS	NS	NS	NS
MW-8	05/22/22	1.5	2.6	4.0	49
MW-8	11/06/22	<1.0	<1.0	<1.0	<10
MW-8	05/20/23	3.3	<1.0	7.0	20
MW-8	11/12/23	<1.0	<1.0	<1.0	<10
MW-8	05/16/24	<1.0	<1.0	3.4	<10
MW-8	11/14/24	<1.0	<1.0	<1.0	<10
MW-9	11/14/17	NS	NS	NS	NS
MW-9	05/15/18	NS	NS	NS	NS
MW-9	10/27/18	1.8	<1.0	<1.0	49
MW-9	05/21/19	NS	NS	NS	NS
MW-9	11/10/19	NS	NS	NS	NS
MW-9	05/12/20	NS	NS	NS	NS
MW-9	11/12/20	NS	NS	NS	NS
MW-9	05/19/21	NS	NS	NS	NS
MW-9	11/11/21	NS	NS	NS	NS
MW-9	05/22/22	NS	NS	NS	NS
MW-9	11/06/22	NS	NS	NS	NS
MW-9	05/20/23	NS	NS	NS	NS
MW-9	11/12/23	NS	NS	NS	NS
MW-9	05/16/24	<1.0	<1.0	<1.0	<10
MW-9	11/14/24	13	110	32	260
MW-10	11/14/17	<1.0	<1.0	<1.0	<10
MW-10	05/15/18	<1.0	<1.0	<1.0	<10
MW-10	10/27/18	<1.0	<1.0	<1.0	<10
MW-10	05/21/19	<1.0	<1.0	<1.0	<10
MW-10	11/10/19	<1.0	<1.0	<1.0	<10
MW-10	05/12/20	<1.0	<1.0	<1.0	<10
MW-10	11/12/20	<1.0	<1.0	<1.0	<10
MW-10	05/19/21	<1.0	<1.0	<1.0	<10
MW-10	11/11/21	<1.0	<1.0	<1.0	<10
MW-10	05/22/22	<1.0	<1.0	<1.0	<10
MW-10	11/06/22	<1.0	<1.0	<1.0	<10

TABLE 2 - GROUNDWATER ANALYTICAL RESULTS

K-27 Line Drip					
Location	Date	Benzene (µg/L)	Toluene (µg/L)	Ethylbenzene (µg/L)	Total Xylenes (µg/L)
NMWQCC Standards:		10	750	750	620
MW-10	05/20/23	<1.0	<1.0	<1.0	<10
MW-10	11/12/23	<1.0	<1.0	<1.0	<10
MW-10	05/16/24	<1.0	<1.0	<1.0	<10
MW-10	11/14/24	<1.0	<1.0	<1.0	<10
MW-12	11/06/22	<1.0	<1.0	<1.0	<10
MW-12	05/20/23	<1.0	<1.0	<1.0	<10
MW-12	11/12/23	<1.0	<1.0	<1.0	<10
MW-12	05/16/24	<1.0	<1.0	<1.0	<10
MW-12	11/14/24	<1.0	<1.0	<1.0	<10
MW-13	11/06/22	<1.0	<1.0	<1.0	<10
MW-13	05/20/23	NS	NS	NS	NS
MW-13	11/12/23	NS	NS	NS	NS
MW-13	05/16/24	<1.0	<1.0	<1.0	<10
MW-13	11/14/24	NS	NS	NS	NS
MW-14	11/06/22	<1.0	<1.0	<1.0	<10
MW-14	05/20/23	<1.0	<1.0	<1.0	<10
MW-14	11/12/23	<1.0	<1.0	<1.0	<10
MW-14	05/16/24	<1.0	<1.0	<1.0	<10
MW-14	11/14/24	<1.0	<1.0	<1.0	<10

Notes:

"NS" = Not Sampled

"µg/L" = micrograms per liter

Results highlighted yellow exceed their respective New Mexico Water Quality Control Commission (NMWQCC) standards.

"J" = Result is less than the reporting limit but greater than or equal to the method detection limit and the result is an approximate value.

"<" = analyte was not detected at the indicated reporting limit (some historic data were reported at the detection limit).

*Field Duplicate results presented immediately below primary sample results

TABLE 3 - GROUNDWATER ELEVATION RESULTS

K-27 Line Drip						
Location	Date	TOC	Depth to LNAPL (ft.)	Depth to Water (ft.)	LNAPL Thickness (ft.)	GW Elevation (ft.)
MW-1	11/04/96	6261.93	ND	37.44		6224.49
MW-1	02/05/97	6261.93	ND	36.89		6225.04
MW-1	05/07/97	6261.93	ND	36.73		6225.20
MW-1	08/08/97	6261.93	ND	37.61		6224.32
MW-1	11/07/97	6261.93	37.21	37.33	0.12	6224.69
MW-1	02/26/98	6261.93	36.71	36.89	0.18	6225.18
MW-1	02/24/99	6261.93	36.27	36.39	0.12	6225.63
MW-1	08/19/99	6261.93	ND	36.48		6225.45
MW-1	11/10/99	6261.93	36.10	36.17	0.07	6225.81
MW-1	09/05/00	6261.93	ND	37.22		6224.71
MW-1	10/06/00	6261.93	ND	37.42		6224.51
MW-1	07/03/01	6261.93	36.49	36.64	0.15	6225.40
MW-1	09/04/01	6261.93	37.39	37.43	0.04	6224.53
MW-1	09/24/01	6261.93	37.40	37.45	0.05	6224.52
MW-1	04/01/02	6261.93	ND	37.01		6224.92
MW-1	07/15/02	6261.93	37.85	38.02	0.17	6224.04
MW-1	10/08/02	6261.93	38.00	38.01	0.01	6223.93
MW-1	01/27/03	6261.93	ND	37.42		6224.51
MW-1	04/26/03	6261.93	ND	37.15		6224.78
MW-1	07/17/03	6261.93	38.18	38.36	0.18	6223.71
MW-1	10/13/03	6261.93	ND	38.29		6223.64
MW-1	01/19/04	6261.93	37.68	37.69	0.01	6224.25
MW-1	04/20/04	6261.93	ND	37.29		6224.64
MW-1	07/27/04	6261.93	38.28	38.45	0.17	6223.61
MW-1	10/20/04	6261.93	38.68	38.71	0.03	6223.24
MW-1	01/25/05	6261.93	38.16	38.18	0.02	6223.77
MW-1	04/14/05	6261.93	37.75	37.84	0.09	6224.16
MW-1	07/19/05	6261.93	ND	38.84		6223.09
MW-1	10/12/05	6261.93	ND	38.46		6223.47
MW-1	10/21/05	6261.93	ND	38.46		6223.47
MW-1	01/23/06	6261.93	ND	37.89		6224.04
MW-1	04/28/06	6261.93	ND	37.57		6224.36
MW-1	07/26/06	6261.93	ND	38.61		6223.32
MW-1	11/07/06	6261.93	36.31	36.37	0.06	6225.61
MW-1	01/17/07	6261.93	ND	35.91		6226.02
MW-1	04/24/07	6261.93	ND	35.53		6226.40
MW-1	07/31/07	6261.93	ND	36.57		6225.36
MW-1	10/25/07	6261.93	ND	36.04		6225.89
MW-1	01/25/08	6261.93	ND	35.90		6226.03
MW-1	04/18/08	6261.93	ND	35.47		6226.46
MW-1	07/23/08	6261.93	ND	36.43		6225.50
MW-1	10/08/08	6261.93	ND	36.95		6224.98
MW-1	10/13/08	6261.93	ND	36.93		6225.00
MW-1	01/16/09	6261.93	ND	36.77		6225.16
MW-1	04/06/09	6261.93	ND	36.30		6225.63
MW-1	08/25/09	6261.93	ND	37.53		6224.40

TABLE 3 - GROUNDWATER ELEVATION RESULTS

K-27 Line Drip						
Location	Date	TOC	Depth to LNAPL (ft.)	Depth to Water (ft.)	LNAPL Thickness (ft.)	GW Elevation (ft.)
MW-1	11/03/09	6261.93	ND	37.58		6224.35
MW-1	02/16/10	6261.93	ND	37.32		6224.61
MW-1	05/24/10	6261.93	ND	36.97		6224.96
MW-1	09/27/10	6261.93	ND	37.98		6223.95
MW-1	11/08/10	6261.93	ND	37.70		6224.23
MW-1	02/01/11	6261.93	ND	37.35		6224.58
MW-1	05/02/11	6261.93	ND	37.26		6224.67
MW-1	09/23/11	6261.93	ND	38.45		6223.48
MW-1	11/10/11	6261.93	ND	38.30		6223.63
MW-1	02/22/12	6261.93	ND	37.82		6224.11
MW-1	05/15/12	6261.93	ND	37.81		6224.12
MW-1	06/05/13	6261.93	ND	38.16		6223.77
MW-1	09/10/13	6261.93	ND	38.85		6223.08
MW-1	12/11/13	6261.93	ND	38.05		6223.88
MW-1	04/04/14	6261.93	ND	37.54		6224.39
MW-1	10/22/14	6261.93	ND	38.36		6223.57
MW-1	05/28/15	6261.93	ND	37.30		6224.63
MW-1	11/21/15	6261.93	ND	37.72		6224.21
MW-1	04/17/16	6261.93	ND	37.29		6224.64
MW-1	10/15/16	6261.93	ND	40.48		6221.45
MW-1	06/07/17	6261.93	ND	37.45		6224.48
MW-1	11/14/17	6261.93	ND	37.96		6223.97
MW-1	05/15/18	6261.93	ND	37.39		6224.54
MW-1	10/21/18	6261.93	ND	38.74		6223.19
MW-1	10/27/18	6261.93	ND	38.71		6223.22
MW-1	05/21/19	6261.93	ND	37.64		6224.29
MW-1	11/10/19	6261.93	ND	38.87		6223.06
MW-1	05/12/20	6261.93	ND	38.31		6223.62
MW-1	11/12/20	6261.93	39.47	39.49	0.02	6222.46
MW-1	03/18/21	6261.93	ND	39.12		6222.81
MW-1	05/19/21	6261.93	ND	38.98		6222.95
MW-1	08/23/21	6261.93	39.89	39.89	<0.01	6222.04
MW-1	11/11/21	6261.93	39.49	39.51	0.02	6222.42
MW-1	03/21/22	6261.93	ND	38.81		6223.12
MW-1	05/22/22	6261.93	ND	39.01		6222.92
MW-1	08/02/22	6261.93	39.15	39.16	0.01	6222.77
MW-1	11/06/22	6261.93	ND	38.38		6223.55
MW-1	03/29/23	6261.93	ND	37.47		6224.46
MW-1	05/20/23	6261.93	ND	37.58		6224.35
MW-1	08/30/23	6261.93	ND	38.69		6223.24
MW-1	11/12/23	6261.93	ND	38.69		6223.24
MW-1	03/28/24	6261.93	ND	38.17		6223.76
MW-1	05/16/24	6261.93	ND	38.14		6223.79
MW-1	09/24/24	6261.93	ND	39.12		6222.81
MW-1	11/14/24	6261.93	ND	NM		NM

TABLE 3 - GROUNDWATER ELEVATION RESULTS

K-27 Line Drip						
Location	Date	TOC	Depth to LNAPL (ft.)	Depth to Water (ft.)	LNAPL Thickness (ft.)	GW Elevation (ft.)
MW-2	08/31/00	6261.39	ND	35.81		6225.58
MW-2	09/05/00	6261.39	36.11	37.28	1.17	6224.99
MW-2	10/06/00	6261.39	36.04	37.31	1.27	6225.03
MW-2	07/03/01	6261.39	36.12	37.37	1.25	6224.96
MW-2	09/04/01	6261.39	36.25	36.52	0.27	6225.07
MW-2	09/24/01	6261.39	36.27	36.46	0.19	6225.07
MW-2	01/02/02	6261.39	35.87	36.97	1.10	6225.24
MW-2	04/01/02	6261.39	35.67	36.61	0.94	6225.48
MW-2	07/15/02	6261.39	ND	38.00		6223.39
MW-2	10/08/02	6261.39	36.94	37.01	0.07	6224.43
MW-2	01/27/03	6261.39	36.31	36.47	0.16	6225.04
MW-2	04/26/03	6261.39	35.85	36.88	1.03	6225.28
MW-2	07/17/03	6261.39	36.75	38.20	1.45	6224.28
MW-2	10/13/03	6261.39	37.07	37.64	0.57	6224.18
MW-2	01/19/04	6261.39	36.51	36.72	0.21	6224.83
MW-2	04/20/04	6261.39	35.91	36.93	1.02	6225.22
MW-2	07/27/04	6261.39	36.88	38.30	1.42	6224.15
MW-2	10/20/04	6261.39	37.37	38.23	0.86	6223.80
MW-2	01/25/05	6261.39	36.77	42.87	6.10	6223.09
MW-2	04/14/05	6261.39	36.55	36.55	<0.01	6224.84
MW-2	07/19/05	6261.39	37.55	38.16	0.61	6223.69
MW-2	10/21/05	6261.39	37.06	38.31	1.25	6224.02
MW-2	01/23/06	6261.39	36.69	37.31	0.62	6224.54
MW-2	04/28/06	6261.39	36.33	37.01	0.68	6224.89
MW-2	07/26/06	6261.39	37.42	38.37	0.95	6223.73
MW-2	11/07/06	6261.39	35.21	35.28	0.07	6226.16
MW-2	01/17/07	6261.39	ND	35.35		6226.04
MW-2	04/24/07	6261.39	ND	35.08		6226.31
MW-2	07/31/07	6261.39	36.01	36.03	0.02	6225.37
MW-2	10/25/07	6261.39	ND	35.53		6225.86
MW-2	01/25/08	6261.39	35.34	35.37	0.03	6226.04
MW-2	04/18/08	6261.39	ND	34.90		6226.49
MW-2	07/23/08	6261.39	ND	35.95		6225.44
MW-2	10/13/08	6261.39	ND	36.39		6225.00
MW-2	01/16/09	6261.39	36.14	36.39	0.25	6225.19
MW-2	04/06/09	6261.39	35.94	35.98	0.04	6225.44
MW-2	08/25/09	6261.39	36.97	37.03	0.06	6224.40
MW-2	11/03/09	6261.39	36.96	37.00	0.04	6224.42
MW-2	02/16/10	6261.39	ND	36.96		6224.43
MW-2	05/24/10	6261.39	36.48	36.55	0.07	6224.89
MW-2	09/27/10	6261.39	37.57	37.58	0.01	6223.82
MW-2	11/08/10	6261.39	ND	37.72		6223.67
MW-2	02/01/11	6261.39	ND	36.92		6224.47
MW-2	05/02/11	6261.39	ND	36.71		6224.68
MW-2	09/23/11	6261.39	ND	38.01		6223.38

TABLE 3 - GROUNDWATER ELEVATION RESULTS

K-27 Line Drip						
Location	Date	TOC	Depth to LNAPL (ft.)	Depth to Water (ft.)	LNAPL Thickness (ft.)	GW Elevation (ft.)
MW-2	11/10/11	6261.39	37.69	37.70	0.01	6223.70
MW-2	02/22/12	6261.39	37.39	37.54	0.15	6223.96
MW-2	05/15/12	6261.39	37.37	37.48	0.11	6223.99
MW-2	06/05/13	6261.39	ND	NA		NA
MW-2	09/10/13	6261.39	ND	NA		NA
MW-2	12/11/13	6261.39	ND	NA		NA
MW-2	04/04/14	6261.39	ND	NA		NA
MW-2 abandoned and replaced with MW-2R on September 26, 2016						
MW-2R	10/15/16	6260.93	37.62	37.97	0.35	6223.22
MW-2R	06/07/17	6260.93	36.53	36.94	0.41	6224.30
MW-2R	07/26/17	6260.93	32.24	32.81	0.57	6228.55
MW-2R	11/14/17	6260.93	36.95	37.76	0.81	6223.78
MW-2R	05/15/18	6260.93	36.48	36.86	0.38	6224.36
MW-2R	10/21/18	6260.93	37.64	38.85	1.21	6222.99
MW-2R	10/27/18	6260.93	ND	37.78		6223.15
MW-2R	05/21/19	6260.93	36.7	37.35	0.65	6224.07
MW-2R	11/10/19	6260.93	37.65	38.82	1.17	6222.99
MW-2R	05/12/20	6260.93	37.26	38.24	0.98	6223.43
MW-2R	08/19/20	6260.93	38.24	39.75	1.51	6222.31
MW-2R	11/12/20	6260.93	38.62	38.69	0.07	6222.29
MW-2R	03/18/21	6260.93	37.00	38.00	1.00	6223.68
MW-2R	05/19/21	6260.93	37.92	39.03	1.11	6222.73
MW-2R	08/23/21	6260.93	38.92	39.80	0.88	6221.79
MW-2R	11/11/21	6260.93	38.67	38.78	0.11	6222.23
MW-2R	03/21/22	6260.93	37.81	38.69	0.88	6222.90
MW-2R	05/22/22	6260.93	37.93	38.94	1.01	6222.75
MW-2R	08/02/22	6260.93	38.35	38.70	0.35	6222.49
MW-2R	11/06/22	6260.93	37.54	37.85	0.31	6223.31
MW-2R	03/29/23	6260.93	ND	36.71		6224.22
MW-2R	05/20/23	6260.93	ND	36.74		6224.19
MW-2R	08/30/23	6260.93	37.94	37.95	0.01	6222.99
MW-2R	11/12/23	6260.93	37.75	38.24	0.49	6223.06
MW-2R	03/28/24	6260.93	ND	37.36		6223.57
MW-2R	05/16/24	6260.93	ND	37.34		6223.59
MW-2R	09/24/24	6260.93	38.33	38.57	0.24	6222.54
MW-2R	11/14/24	6260.93	NM	NM	0.25	NM
MW-3	09/05/00	6261.71	ND	37.40		6224.31
MW-3	07/03/01	6261.71	ND	37.69		6224.02
MW-3	09/04/01	6261.71	ND	37.50		6224.21
MW-3	09/24/01	6261.71	ND	37.51		6224.20
MW-3	04/01/02	6261.71	ND	37.08		6224.63
MW-3	07/15/02	6261.71	ND	37.13		6224.58
MW-3	10/08/02	6261.71	ND	38.09		6223.63
MW-3	07/17/03	6261.71	ND	38.28		6223.43

TABLE 3 - GROUNDWATER ELEVATION RESULTS

K-27 Line Drip						
Location	Date	TOC	Depth to LNAPL (ft.)	Depth to Water (ft.)	LNAPL Thickness (ft.)	GW Elevation (ft.)
MW-3	10/13/03	6261.71	ND	38.34		6223.37
MW-3	01/19/04	6261.71	ND	37.69		6224.02
MW-3	04/20/04	6261.71	ND	37.26		6224.45
MW-3	07/27/04	6261.71	ND	38.36		6223.35
MW-3	10/20/04	6261.71	ND	38.72		6222.99
MW-3	01/25/05	6261.71	ND	38.13		6223.58
MW-3	04/14/05	6261.71	ND	37.74		6223.97
MW-3	07/19/05	6261.71	ND	38.74		6222.97
MW-3	10/21/05	6261.71	ND	38.48		6223.23
MW-3	01/23/06	6261.71	ND	37.89		6223.82
MW-3	04/28/06	6261.71	ND	37.61		6224.10
MW-3	07/26/06	6261.71	ND	38.34		6223.37
MW-3	11/07/06	6261.71	ND	36.50		6225.21
MW-3	01/17/07	6261.71	ND	35.98		6225.73
MW-3	04/24/07	6261.71	ND	35.64		6226.07
MW-3	07/31/07	6261.71	ND	36.59		6225.12
MW-3	10/25/07	6261.71	ND	36.20		6225.51
MW-3	01/25/08	6261.71	ND	36.00		6225.71
MW-3	04/18/08	6261.71	ND	35.56		6226.15
MW-3	07/23/08	6261.71	ND	36.60		6225.11
MW-3	10/08/08	6261.71	ND	37.09		6224.62
MW-3	10/13/08	6261.71	ND	37.09		6224.62
MW-3	01/16/09	6261.71	ND	36.83		6224.88
MW-3	04/06/09	6261.71	ND	36.43		6225.28
MW-3	08/25/09	6261.71	ND	37.62		6224.09
MW-3	11/03/09	6261.71	ND	37.67		6224.04
MW-3	02/16/10	6261.71	ND	37.16		6224.55
MW-3	05/24/10	6261.71	ND	37.02		6224.69
MW-3	09/27/10	6261.71	ND	38.07		6223.64
MW-3	11/08/10	6261.71	ND	37.82		6223.89
MW-3	02/01/11	6261.71	ND	37.39		6224.32
MW-3	05/02/11	6261.71	ND	37.28		6224.43
MW-3	09/23/11	6261.71	ND	38.15		6223.56
MW-3	11/10/11	6261.71	ND	38.13		6223.58
MW-3	02/22/12	6261.71	ND	37.85		6223.86
MW-3	05/15/12	6261.71	ND	37.87		6223.84
MW-3	06/05/13	6261.71	ND	38.26		6223.45
MW-3	09/10/13	6261.71	ND	38.95		6222.76
MW-3	12/11/13	6261.71	ND	DRY		NA
MW-3	04/04/14	6261.71	ND	DRY		NA
MW-3	10/22/14	6261.71	ND	DRY		NA
MW-3	05/28/15	6261.71	ND	DRY		NA
MW-3	11/21/15	6261.71	ND	DRY		NA
MW-3	04/17/16	6261.71	ND	DRY		NA
MW-3 abandoned and replaced with MW-3R on September 26, 2016						

TABLE 3 - GROUNDWATER ELEVATION RESULTS

K-27 Line Drip						
Location	Date	TOC	Depth to LNAPL (ft.)	Depth to Water (ft.)	LNAPL Thickness (ft.)	GW Elevation (ft.)
MW-3R	10/15/16	6261.09	ND	37.92		6223.17
MW-3R	06/07/17	6261.09	ND	36.83		6224.26
MW-3R	11/14/17	6261.09	ND	37.37		6223.72
MW-3R	05/15/18	6261.09	ND	36.77		6224.32
MW-3R	10/21/18	6261.09	ND	38.12		6222.97
MW-3R	10/27/18	6261.09	ND	38.05		6223.04
MW-3R	05/21/19	6261.09	ND	37.00		6224.09
MW-3R	11/10/19	6261.09	ND	38.15		6222.94
MW-3R	05/12/20	6261.09	ND	37.66		6223.43
MW-3R	11/12/20	6261.09	ND	38.85		6222.24
MW-3R	05/19/21	6261.09	ND	38.40		6222.69
MW-3R	11/11/21	6261.09	ND	38.86		6222.23
MW-3R	05/22/22	6261.09	ND	38.42		6222.67
MW-3R	11/06/22	6261.09	ND	37.78		6223.31
MW-3R	05/20/23	6261.09	ND	36.95		6224.14
MW-3R	11/12/23	6261.09	ND	38.05		6223.04
MW-3R	05/16/24	6261.09	ND	37.54		6223.55
MW-3R	11/14/24	6261.09	ND	NM		NM
MW-4	11/08/06	6258.51	ND	32.95		6225.56
MW-4	01/17/07	6258.51	ND	32.63		6225.88
MW-4	04/24/07	6258.51	ND	32.30		6226.21
MW-4	07/31/07	6258.51	ND	33.33		6225.18
MW-4	10/25/07	6258.51	ND	32.90		6225.61
MW-4	01/25/08	6258.51	ND	32.64		6225.87
MW-4	04/18/08	6258.51	ND	32.20		6226.31
MW-4	07/23/08	6258.51	ND	33.30		6225.21
MW-4	10/08/08	6258.51	ND	33.79		6224.72
MW-4	10/13/08	6258.51	ND	33.80		6224.71
MW-4	01/16/09	6258.51	ND	33.53		6224.98
MW-4	04/06/09	6258.51	ND	33.18		6225.33
MW-4	08/25/09	6258.51	ND	34.35		6224.16
MW-4	11/03/09	6258.51	ND	34.35		6224.16
MW-4	02/16/10	6258.51	ND	34.05		6224.46
MW-4	05/24/10	6258.51	ND	33.65		6224.86
MW-4	09/27/10	6258.51	ND	34.81		6223.70
MW-4	11/08/10	6258.51	ND	34.55		6223.96
MW-4	02/01/11	6258.51	ND	34.12		6224.39
MW-4	05/02/11	6258.51	ND	33.93		6224.58
MW-4	09/23/11	6258.51	ND	35.22		6223.29
MW-4	11/10/11	6258.51	ND	35.02		6223.49
MW-4	02/22/12	6258.51	ND	34.66		6223.85
MW-4	05/15/12	6258.51	ND	34.61		6223.90
MW-4	06/05/13	6258.51	ND	34.96		6223.55
MW-4	09/10/13	6258.51	ND	35.61		6222.90

TABLE 3 - GROUNDWATER ELEVATION RESULTS

K-27 Line Drip						
Location	Date	TOC	Depth to LNAPL (ft.)	Depth to Water (ft.)	LNAPL Thickness (ft.)	GW Elevation (ft.)
MW-4	12/11/13	6258.51	ND	34.73		6223.78
MW-4	04/14/14	6258.51	ND	34.21		6224.30
MW-4	10/22/14	6258.51	ND	35.10		6223.41
MW-4	05/28/15	6258.51	ND	34.08		6224.43
MW-4	11/21/15	6258.51	ND	34.33		6224.18
MW-4	04/17/16	6258.51	ND	33.92		6224.59
MW-4	10/15/16	6258.51	ND	35.27		6223.24
MW-4	06/07/17	6258.51	ND	34.23		6224.28
MW-4	11/14/17	6258.51	ND	34.73		6223.78
MW-4	05/15/18	6258.51	ND	34.16		6224.35
MW-4	10/21/18	6258.51	ND	35.49		6223.02
MW-4	10/27/18	6258.51	ND	35.42		6223.09
MW-4	05/21/19	6258.51	ND	34.41		6224.10
MW-4	11/10/19	6258.51	ND	35.39		6223.12
MW-4	05/12/20	6258.51	ND	35.07		6223.44
MW-4	11/12/20	6258.51	ND	36.23		6222.28
MW-4	05/19/21	6258.51	ND	35.82		6222.69
MW-4	11/11/21	6258.51	ND	36.24		6222.27
MW-4	05/22/22	6258.51	ND	35.78		6222.73
MW-4	11/06/22	6258.51	ND	35.15		6223.36
MW-4	05/20/23	6258.51	ND	34.33		6224.18
MW-4	11/12/23	6258.51	ND	35.45		6223.06
MW-4	05/16/24	6258.51	ND	34.95		6223.56
MW-4	11/14/24	6258.51	ND	NM		NM
MW-5	10/15/16	6264.51	ND	41.24		6223.27
MW-5	06/07/17	6264.51	ND	40.14		6224.37
MW-5	11/14/17	6264.51	ND	40.70		6223.81
MW-5	05/15/18	6264.51	ND	40.09		6224.42
MW-5	10/21/18	6264.51	ND	41.46		6223.05
MW-5	10/27/18	6264.51	ND	41.40		6223.11
MW-5	05/21/19	6264.51	ND	40.34		6224.17
MW-5	11/10/19	6264.51	ND	41.53		6222.98
MW-5	05/12/20	6264.51	ND	41.00		6223.51
MW-5	11/12/20	6264.51	ND	42.13		6222.38
MW-5	05/19/21	6264.51	ND	41.74		6222.77
MW-5	11/11/21	6264.51	ND	42.21		6222.30
MW-5	05/22/22	6264.51	ND	41.74		6222.77
MW-5	11/06/22	6264.51	ND	41.12		6223.39
MW-5	05/20/23	6264.51	ND	40.31		6224.20
MW-5	11/12/23	6264.51	ND	41.41		6223.10
MW-5	05/16/24	6264.51	ND	40.88		6223.63
MW-5	11/14/24	6264.51	ND	NM		NM
MW-6	10/15/16	6263.51	ND	40.14		6223.37
MW-6	06/07/17	6263.51	ND	39.07		6224.44

TABLE 3 - GROUNDWATER ELEVATION RESULTS

K-27 Line Drip						
Location	Date	TOC	Depth to LNAPL (ft.)	Depth to Water (ft.)	LNAPL Thickness (ft.)	GW Elevation (ft.)
MW-6	11/14/17	6263.51	ND	39.69		6223.82
MW-6	05/15/18	6263.51	ND	39.01		6224.50
MW-6	10/21/18	6263.51	40.40	40.49	0.09	6223.08
MW-6	10/27/18	6263.51	ND	40.34		6223.17
MW-6	05/21/19	6263.51	ND	39.30		6224.21
MW-6	11/10/19	6263.51	ND	40.46		6223.05
MW-6	05/12/20	6263.51	ND	39.91		6223.60
MW-6	11/12/20	6263.51	41.04	41.09	0.05	6222.45
MW-6	03/18/21	6263.51	ND	40.77		6222.74
MW-6	05/19/21	6263.51	ND	40.60		6222.91
MW-6	08/23/21	6263.51	41.29	41.93	0.64	6222.06
MW-6	11/11/21	6263.51	41.02	41.39	0.37	6222.39
MW-6	03/21/22	6263.51	40.43	40.58	0.15	6223.04
MW-6	05/22/22	6263.51	40.54	40.80	0.26	6222.90
MW-6	08/02/22	6263.51	40.98	41.12	0.14	6222.49
MW-6	11/06/22	6263.51	ND	40.14		6223.37
MW-6	03/29/23	6263.51	ND	39.24		6224.27
MW-6	05/20/23	6263.51	ND	39.25		6224.26
MW-6	08/30/23	6263.51	ND	40.28		6223.23
MW-6	11/12/23	6263.51	ND	40.35		6223.16
MW-6	03/27/24	6263.51	ND	39.87		6223.64
MW-6	05/16/24	6263.51	ND	39.77		6223.74
MW-6	09/24/24	6263.51	40.80	40.84	0.04	6222.70
MW-6	11/14/24	6263.51	ND	NM		NM
MW-7	10/15/16	6262.84	ND	39.32		6223.52
MW-7	06/07/17	6262.84	ND	37.34		6225.50
MW-7	11/14/17	6262.84	ND	37.88		6224.96
MW-7	05/15/18	6262.84	ND	37.27		6225.57
MW-7	10/21/18	6262.84	ND	38.62		6224.22
MW-7	10/27/18	6262.84	ND	38.56		6224.28
MW-7	05/21/19	6262.84	ND	37.54		6225.30
MW-7	11/10/19	6262.84	ND	38.64		6224.20
MW-7	05/12/20	6262.84	ND	38.18		6224.66
MW-7	11/12/20	6262.84	ND	39.37		6223.47
MW-7	05/19/21	6262.84	38.83	39.05	0.22	6223.96
MW-7	08/23/21	6262.84	39.66	40.10	0.44	6223.07
MW-7	11/11/21	6262.84	ND	39.39		6223.45
MW-7	03/21/22	6262.84	ND	38.74		6224.10
MW-7	05/22/22	6262.84	ND	38.90		6223.94
MW-7	08/02/22	6262.84	ND	39.10		6223.74
MW-7	11/06/22	6262.84	ND	38.28		6224.56
MW-7	03/29/23	6262.84	ND	37.39		6225.45
MW-7	05/20/23	6262.84	ND	37.45		6225.39
MW-7	08/30/23	6262.84	ND	38.61		6224.23
MW-7	11/12/23	6262.84	ND	38.55		6224.29

TABLE 3 - GROUNDWATER ELEVATION RESULTS

K-27 Line Drip						
Location	Date	TOC	Depth to LNAPL (ft.)	Depth to Water (ft.)	LNAPL Thickness (ft.)	GW Elevation (ft.)
MW-7	03/28/24	6262.84	ND	38.04		6224.80
MW-7	05/16/24	6262.84	ND	38.03		6224.81
MW-7	09/24/24	6262.84	ND	39.09		6223.75
MW-7	11/14/24	6262.84	ND	NM		NM
MW-8	10/15/16	6260.37	ND	37.10		6223.27
MW-8	06/07/17	6260.37	ND	36.08		6224.29
MW-8	11/14/17	6260.37	ND	36.56		6223.81
MW-8	05/15/18	6260.37	ND	35.97		6224.40
MW-8	10/21/18	6260.37	ND	37.40		6222.97
MW-8	10/27/18	6260.37	37.15	37.57	0.42	6223.11
MW-8	05/21/19	6260.37	ND	36.26		6224.11
MW-8	11/10/19	6260.37	ND	37.39		6222.98
MW-8	05/12/20	6260.37	ND	36.88		6223.49
MW-8	11/12/20	6260.37	37.84	38.04	0.2	6222.48
MW-8	03/18/21	6260.37	37.58	37.60	0.02	6222.78
MW-8	05/19/21	6260.37	37.64	37.72	0.08	6222.71
MW-8	08/23/21	6260.37	38.27	39.30	1.03	6221.84
MW-8	11/11/21	6260.37	37.95	38.54	0.59	6222.27
MW-8	03/21/22	6260.37	37.47	37.48	0.01	6222.89
MW-8	05/22/22	6260.37	ND	37.60		6222.77
MW-8	08/02/22	6260.37	ND	37.70		6222.67
MW-8	11/06/22	6260.37	ND	37.01		6223.36
MW-8	03/29/23	6260.37	ND	36.17		6224.20
MW-8	05/20/23	6260.37	ND	36.15		6224.22
MW-8	08/30/23	6260.37	ND	37.44		6222.93
MW-8	11/12/23	6260.37	ND	37.28		6223.09
MW-8	03/28/24	6260.37	ND	36.80		6223.57
MW-8	05/16/24	6260.37	ND	36.78		6223.59
MW-8	09/24/24	6260.37	37.81	37.82	0.01	6222.55
MW-8	11/14/24	6260.37	ND	NM		NM
MW-9	11/14/17	6261.66	37.75	38.14	0.39	6223.81
MW-9	05/15/18	6261.66	37.16	37.65	0.49	6224.38
MW-9	10/21/18	6261.66	38.34	39.35	1.01	6223.07
MW-9	10/27/18	6261.66	ND	38.55		6223.11
MW-9	05/21/19	6261.66	37.44	37.99	0.55	6224.08
MW-9	11/10/19	6261.66	38.39	39.70	1.31	6222.94
MW-9	05/12/20	6261.66	37.46	38.85	1.39	6223.85
MW-9	08/19/20	6261.66	38.50	40.59	2.09	6222.64
MW-9	11/12/20	6261.66	39.02	40.36	1.34	6222.31
MW-9	03/18/21	6261.66	37.75	38.75	1.00	6223.66
MW-9	05/19/21	6261.66	38.67	39.58	0.91	6222.76
MW-9	08/23/21	6261.66	39.35	41.04	1.69	6221.89
MW-9	11/11/21	6261.66	39.15	40.10	0.95	6222.27
MW-9	03/21/22	6261.66	38.65	38.95	0.30	6222.94

TABLE 3 - GROUNDWATER ELEVATION RESULTS

K-27 Line Drip						
Location	Date	TOC	Depth to LNAPL (ft.)	Depth to Water (ft.)	LNAPL Thickness (ft.)	GW Elevation (ft.)
MW-9	05/22/22	6261.66	38.76	39.30	0.54	6222.77
MW-9	08/02/22	6261.66	38.95	39.51	0.56	6222.57
MW-9	11/06/22	6261.66	38.28	38.29	0.01	6223.38
MW-9	03/29/23	6261.66	ND	37.38		6224.28
MW-9	05/20/23	6261.66	37.45	37.54	0.09	6224.19
MW-9	08/30/23	6261.66	38.64	38.70	0.06	6223.01
MW-9	11/12/23	6261.66	ND	39.58		6222.08
MW-9	03/28/24	6261.66	ND	38.06		6223.60
MW-9	05/16/24	6261.66	ND	38.06		6223.60
MW-9	09/24/24	6261.66	ND	39.12		6222.54
MW-9	11/14/24	6261.66	ND	NM		NM
MW-10	11/14/17	6257.55	ND	33.78		6223.77
MW-10	05/15/18	6257.55	ND	33.13		6224.42
MW-10	10/21/18	6257.55	ND	34.53		6223.02
MW-10	10/27/18	6257.55	ND	34.45		6223.10
MW-10	05/21/19	6257.55	ND	33.44		6224.11
MW-10	11/10/19	6257.55	ND	34.61		6222.94
MW-10	05/12/20	6257.55	ND	34.10		6223.45
MW-10	11/12/20	6257.55	ND	35.25		6222.30
MW-10	05/19/21	6257.55	ND	34.83		6222.72
MW-10	11/11/21	6257.55	ND	35.28		6222.27
MW-10	05/22/22	6257.55	ND	34.80		6222.75
MW-10	11/06/22	6257.55	ND	34.19		6223.36
MW-10	05/20/23	6257.55	ND	33.35		6224.20
MW-10	11/12/23	6257.55	ND	34.47		6223.08
MW-10	05/16/24	6257.55	ND	33.98		6223.57
MW-10	11/14/24	6257.55	ND	NM		NM
MW-12	11/06/22	6264.03	ND	39.54		6224.49
MW-12	03/29/23	6264.03	ND	38.63		6225.40
MW-12	05/20/23	6264.03	ND	38.68		6225.35
MW-12	11/12/23	6264.03	ND	39.78		6224.25
MW-12	05/16/24	6265.03	ND	38.51		6226.52
MW-12	11/14/24	6265.03	ND	NM		NM
MW-13	11/06/22	6263.58	ND	39.13		6224.45
MW-13	03/29/23	6263.58	ND	38.29		6225.29
MW-13	05/20/23	6263.58	ND	38.27		6225.31
MW-13	11/12/23	6263.58	ND	39.37		6224.21
MW-13	05/16/24	6264.58	ND	38.88		6225.70
MW-13	11/14/24	6264.58	ND	NM		NM
MW-14	11/06/22	6260.77	ND	35.76		6225.01
MW-14	03/29/23	6260.77	ND	34.92		6225.85
MW-14	05/20/23	6260.77	ND	34.94		6225.83
MW-14	11/12/23	6260.77	ND	36.05		6224.72

TABLE 3 - GROUNDWATER ELEVATION RESULTS

K-27 Line Drip						
Location	Date	TOC	Depth to LNAPL (ft.)	Depth to Water (ft.)	LNAPL Thickness (ft.)	GW Elevation (ft.)
MW-14	05/16/24	6261.77	ND	35.56		6226.21
MW-14	11/14/24	6261.77	ND	NM		NM
TW-1	10/21/18	6261.86	ND	38.82		6223.04
TW-1	10/27/18	6261.86	ND	38.76		6223.10
TW-1	05/21/19	6261.86	ND	37.72		6224.14
TW-1	11/10/19	6261.86	ND	38.84		6223.02
TW-1	05/12/20	6261.86	ND	38.33		6223.53
TW-1	11/12/20	6261.86	ND	39.52		6222.34
TW-1	05/19/21	6261.86	ND	39.09		6222.77
TW-1	11/11/21	6261.86	ND	39.57		6222.29
TW-1	05/22/22	6261.86	ND	39.10		6222.76
TW-1	11/06/22	6261.86	ND	38.50		6223.36
TW-1	05/20/23	6261.86	ND	37.65		6224.21
TW-1	11/12/23	6261.86	ND	38.77		6223.09
TW-1	05/16/24	6262.86	ND	38.25		6224.61
TW-1	11/14/24	6262.86	ND	NM		NM

Notes:

"ft" = feet

"TOC" = Top of casing

"LNAPL" = Light non-aqueous phase liquid

"NM" = Not Measured due to oil-water interface probe malfunction. In-well thickness estimated by transparent disposable bailer.

"ND" = LNAPL not detected

"NA" = Not Applicable

Groundwater elevation = Top of Casing elevation (TOC, ft) - Depth to Water [ft] + (LPH thickness [ft] x 0.75). A specific gravity of 0.75 is within the range of gas condensate

(<https://www.sciencedirect.com/topics/earth-and-planetary-sciences/gas-condensate>)

FIGURES

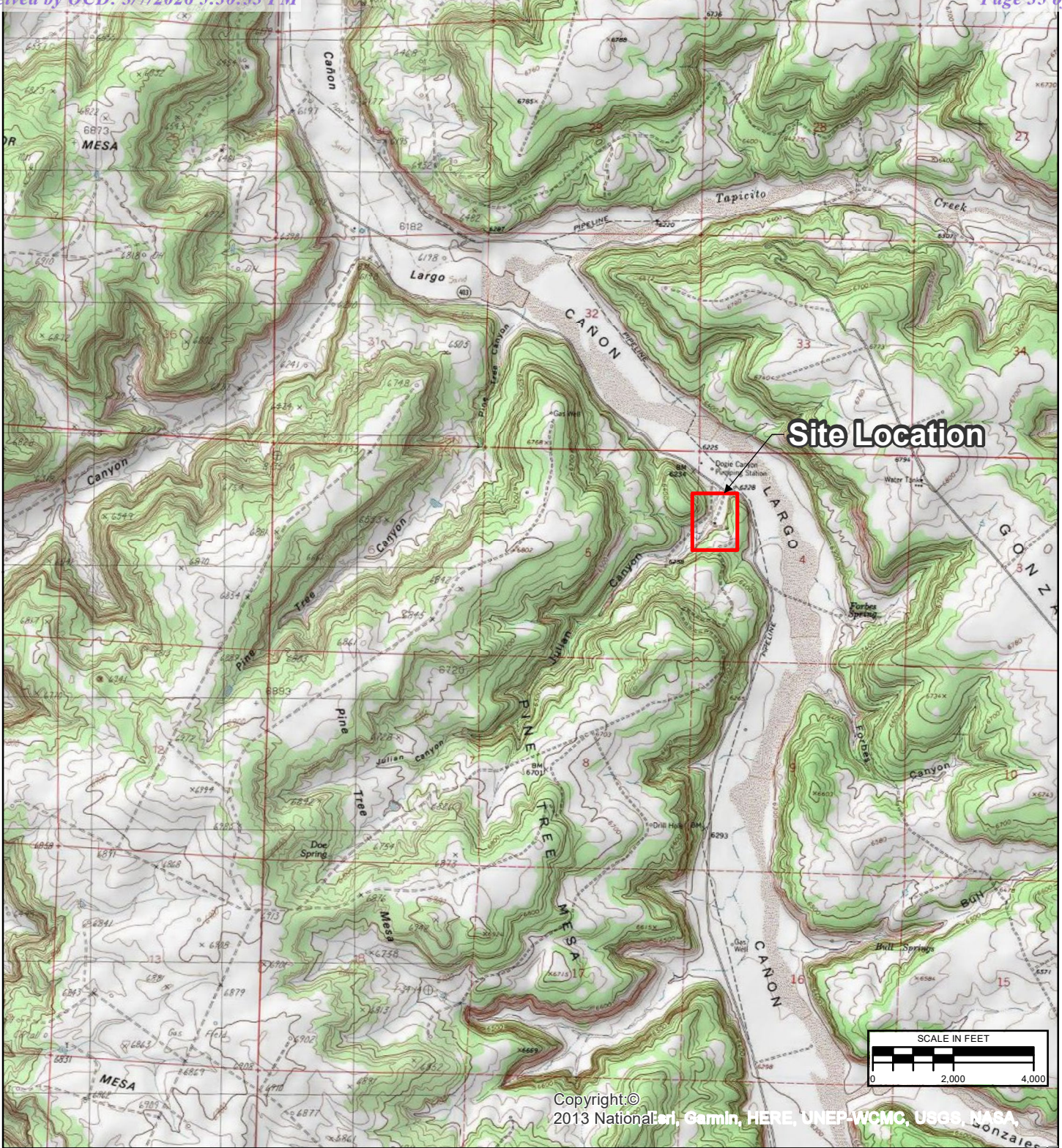
FIGURE 1: SITE LOCATION

FIGURE 2: SITE PLAN

FIGURE 3: GROUNDWATER ANALYTICAL RESULTS – MAY 16, 2024

FIGURE 4: GROUNDWATER ELEVATION MAP – MAY 16, 2024


FIGURE 5: GROUNDWATER ANALYTICAL RESULTS – NOVEMBER 14, 2024



Copyright © 2013 National Aeronautics and Space Administration, Garmin, HERE, UNEP-WCMC, USGS, NASA



REVISION	DATE	DESIGN BY	DRAWN BY	REVIEWED BY
	2023-02-14	SAH	SAH	SRV

TITLE SITE LOCATION		 Stantec
PROJECT	K-27 LD072 SAN JUAN RIVER BASIN RIO ARRIBA COUNTY, NEW MEXICO	
FIGURE 1		

\\cd1001-c200\CTX-CIFSS\VDI\Redirect\shansen\Desktop\GIS-NEW_MXD\K-27 LD072\2022 MAPS\K-27_SITEMAP_2022.mxd



LEGEND:

- 6257 — APPROXIMATE GROUND SURFACE CONTOUR AND ELEVATION, FEET
- X- — FENCE
- GAS — NATURAL GAS LINE
- — ABANDONED MONITORING WELL
- ◆ — MONITORING WELL
- — TEST WELL
- ◆ — SOIL BORING
- ▲ — SMA BENCHMARK
- RIGHT OF WAY BOUNDARY

SCALE IN FEET

REVISION	DATE	DESIGN BY	DRAWN BY	REVIEWED BY
	2025-01-03	SLG	SLG	SRV

TITLE: **SITE PLAN**

PROJECT: **K27 LD072
SAN JUAN RIVER BASIN
RIO ARRIBA COUNTY, NEW MEXICO**

Stantec Figure No.: **2**

AERIAL IMAGERY FROM GOOGLE EARTH, DATED 8/16/2016.

\\cd1001-c200\CTX-CIFSS\VDI\Redirect\shansen\Desktop\GIS-NEW_MXD\K-27 LD072\2024 MAPS\K-27_GECM_1SA_2024.mxd

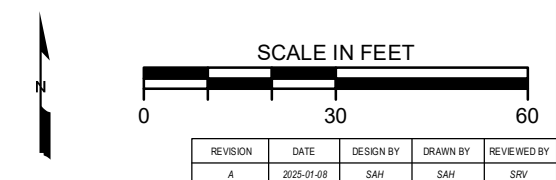


LEGEND:

- 6257 — APPROXIMATE GROUND SURFACE CONTOUR AND ELEVATION, FEET
- X— FENCE
- GAS— NATURAL GAS LINE
- ⊙ ABANDONED MONITORING WELL
- ⬮ MONITORING WELL
- ⊙ TEST WELL
- △ SMA BENCHMARK

NOTES:

- 6223.56 GROUNDWATER ELEVATION (CORRECTED FOR LNAPL THICKNESS WHEN PRESENT) FEET ABOVE MEAN SEA LEVEL
 - 6223.5 CORRECTED WATER LEVEL ELEVATION CONTOUR DASHED WHERE INFERRED (FEET ABOVE MEAN SEA LEVEL)
 - DIRECTION OF APPARENT GROUNDWATER FLOW
 - * GROUNDWATER ELEVATION APPEARS ANOMALOUS AND WAS NOT USED TO PREPARE CONTOURING GROUNDWATER ELEVATION.
- LNAPL = LIGHT NON-AQUEOUS PHASE LIQUID



TITLE:
**GROUNDWATER ELEVATION MAP
MAY 16, 2024**

PROJECT: **K27 LD072
SAN JUAN RIVER BASIN
RIO ARRIBA COUNTY, NEW MEXICO**

Figure No.: **4**

AERIAL IMAGERY FROM GOOGLE EARTH, DATED 8/16/2016.

APPENDICES

APPENDIX A – SITE HISTORY

APPENDIX B – NMOCD NOTIFICATION OF SITE ACTIVITIES

APPENDIX C – WASTE DISPOSAL DOCUMENTATION

APPENDIX D – GROUNDWATER ANALYTICAL LAB REPORTS

APPENDIX A

Site History



K-27

Site History

San Juan River Basin, New Mexico

Date	Source (Regulatory File #)	Event/Action	Description/Comments
9/16/1995	nAUTOfAB000316 (Case # 3RP-204)	EPFS Remediation Plan for Groundwater Encountered During Pit Closure Activities to NMOCD	Outlines approach to investigating and remediating soil and groundwater at closed pit sites. Accepted 10/11/2024.
11/29/1995	nAUTOfAB000316 (Case # 3RP-204)	EPFS Addendum to the Remediation Plan for Groundwater Encountered During Pit Closure Activities to NMOCD	Amends work plan to include installation of additional wells for delineation, define groundwater sampling parameters, and release closure following four consecutive quarters of results below NMWQCC standards. Accepted 10/11/2024.
11/30/1995	nAUTOfAB000316 (Case # 3RP-204)	NMOCD approval of the Remediation Plan with conditions	Approval of Remediation Plan and Addendum.
6/2/1997	nAUTOfAB000316 (Case # 3RP-204)	EPFS letter to NMOCD	Groundwater had been encountered at various sites while investigating and/or remediating exempt hydrocarbon unlined pits. Depth to water was stated as being 40' at the K27 Line Drip site. EPFS requested that future reports for this project be submitted on a yearly basis.
8/6/1997	nAUTOfAB000316 (Case # 3RP-204)	NMOCD approval letter for the 6/2/1997 Semiannual Groundwater Report (EPFS)	Includes EPFS's listing of San Juan Basin pit closure sites at which EPFS has encountered groundwater and a proposal to modify the reporting schedule to annual.
2/27/1998	nAUTOfAB000316 (Case # 3RP-204)	Phillip Services' 1997 Annual Report (for EPFS)	Quarterly groundwater monitoring was initiated on 11/4/96 and continued into 1997. Report recommended obtaining permission to conduct an off-site investigation. Historical (1995-1996) well and soil boring logs and sample results also provided.
7/8/1998	nAUTOfAB000316 (Case # 3RP-204)	NMOCD 1997 Annual Report review letter	Requires EPFS install additional groundwater monitoring wells at the site to monitor and determine the extent of groundwater contamination pursuant to their previously approved groundwater investigation plan.
3/31/1999	nAUTOfAB000316 (Case # 3RP-204)	Phillip Services' 1998 Annual Report (for EPFS)	LNAPL monitoring and recovery from MW-1. Quarterly sampling was discontinued due to the presence of LNAPL.

K-27

Site History

San Juan River Basin, New Mexico

7/28/1999	nAUTOfAB000316 (Case # 3RP-204)	NMOCD 1998 Annual Report review letter	Requires that EPFS install additional groundwater monitoring wells at the site by December 31, 1999.
3/24/2000	nAUTOfAB000316 (Case # 3RP-204)	Phillip Services' 1999 Annual Report (for EPFS)	LNAPL monitoring results and attempted installation of MW-2.
3/31/2001	nAUTOfAB000316 (Case # 3RP-204)	Phillip Services' 2000 Annual Report (for EPFS)	Monitoring wells MW-2 and MW-3 installed and quarterly LNAPL monitoring and groundwater sampling conducted.
7/18/2001	nAUTOfAB000316 (Case # 3RP-204)	NMOCD 2000 Annual Report review letter	Requires install of additional groundwater monitoring wells.
2/28/2002	nAUTOfAB000316 (Case # 3RP-204)	MWH 2001 Annual Report (for EPFS)	Quarterly LNAPL recovery and groundwater sampling results
2/28/2003	nAUTOfAB000316 (Case # 3RP-204)	MWH 2002 Annual Report (for EPFS)	Quarterly LNAPL recovery activities. LNAPL present in MW-3 in July 2002.
4/3/2003	nAUTOfAB000316 (Case # 3RP-204)	NMOCD 2002 Annual Report review letter	Requires installation of additional groundwater monitoring wells to delineate the extent of groundwater.
2/26/2004	nAUTOfAB000316 (Case # 3RP-204)	MWH 2003 Annual Report (for EPFS)	Quarterly LNAPL monitoring and recovery activities.
2/21/2005	nAUTOfAB000316 (Case # 3RP-204)	MWH 2004 Annual Report (for EPFS)	Quarterly LNAPL recovery and monitoring activities.
2006	nAUTOfAB000316 (Case # 3RP-204)	MWH 2005 Annual Report (for EPFS)	Quarterly LNAPL recovery (using oil absorbant socks) and monitoring. Access grants and permits being obtained for Geoprobe investigation in 2006.
3/2007	nAUTOfAB000316 (Case # 3RP-204)	MWH 2006 Annual Report (for EPTPC)	Quarterly LNAPL recovery activities and annual groundwater sampling results, and results of Geoprobe soil and groundwater sampling. Temporary well TMW-5 installed.
4/2/2008	nAUTOfAB000316 (Case # 3RP-204)	MWH 2007 Annual Report (for EPTPC)	Quarterly LNAPL recovery and annual groundwater sampling activities.
2/28/2009	nAUTOfAB000316 (Case # 3RP-204)	MWH 2008 Annual Report (for EPTPC)	Quarterly LNAPL recovery and annual groundwater sampling activities.
4/16/2010	nAUTOfAB000316 (Case # 3RP-204)	MWH 2009 Annual Report (for EPTPC)	Quarterly LNAPL recovery and annual groundwater sampling activities.
3/2/2011	nAUTOfAB000316 (Case # 3RP-204)	MWH 2010 Annual Report (for EPTPC)	Quarterly LNAPL recovery and annual groundwater sampling activities.

K-27

Site History

San Juan River Basin, New Mexico

8/16/2012	nAUTOfAB000316 (Case # 3RP-204)	MWH 2011 Annual Report (for EPCGPC)	Quarterly LNAPL recovery and annual groundwater sampling activities. The potential for passive bioventing or ORC/electron acceptor remediation technology to be evaluated.
3/4/2014	nAUTOfAB000316 (Case # 3RP-204)	MWH 2013 Annual Report (for EPCGPC)	Annual groundwater sampling conducted. Access agreements for additional monitoring well installation activities being pursued.
2/2/2015	nAUTOfAB000316 (Case # 3RP-204)	MWH 2014 Annual Report (for EPCGP)	Annual groundwater sampling conducted, and status update of BLM right-of-way agreements provided.
2/16/2016	nAUTOfAB000316 (Case # 3RP-204)	MWH 2015 Annual Report (for EPCGP)	Annual groundwater sampling conducted.
9/7/2016	Not in NMOCD files	MWH 2016 Monitoring Well Installation Work Plan	Work Plan for replacing 2 monitoring wells, installing 4 additional monitoring wells, and advancing 1 soil boring.
3/20/2017	nAUTOfAB000316 (Case # 3RP-204)	MWH 2016 Annual Report (for EPCGP)	Six monitoring wells (MW-2R, MW-3R, MW-5, MW-6, MW-7, and MW-8) were completed and one soil boring (SB-1) advanced. MW-2 and MW-3 plugged and abandoned. Semi-annual groundwater sampling conducted. LNAPL encountered in MW-2R.
6/2/2017	nAUTOfAB000316 (Case # 3RP-204)	Letter from NMOCD to El Paso	Submit remediation plans by 7/31/2017 to a) fully delineate both the LNAPL and benzene plumes and b) to recover LNAPL effectively by use of more active remediation techniques.
6/29/2017	nAUTOfAB000316 (Case # 3RP-204)	Work Plan for LNAPL Recovery Activities (for EPCGPC)	MDPE activities proposed.
7/5/2017	nAUTOfAB000316 (Case # 3RP-204)	NMOCD letter to El Paso Re: June 2017 Work Plan	NMOCD approved 1 day of MDPE at MW-2R.
7/19/2017	nAUTOfAB000316 (Case # 3RP-204)	Response letter from EPCGPC to NMOCD	Letter stated EPCGP is awaiting the results of the 2017 groundwater monitoring activities and effectiveness of the planned MDPE activities prior to submitting a scope of work of additional delineation activities. Delineation north of MW-2R is planned for 2018.
10/5/2017	nAUTOfAB000316 (Case # 3RP-204)	Monitoring Well Installation Work Plan (for EPCGPC)	Work Plan to install two additional monitoring wells (MW-9 and MW-10).

K-27

Site History

San Juan River Basin, New Mexico

11/15/2017	nAUTOfAB000316 (Case # 3RP-204)	NMOCD Approval of Monitoring Well Installation Work Plan	MW-9 and MW-10
3/28/2018	nAUTOfAB000316 (Case # 3RP-204)	MWH 2017 Annual Report (for EPCGP)	Summary 1 day MDPE event, installation of MW-9 and MW-10, semi-annual groundwater sampling.
3/29/2019	Not in NMOCD files	Stantec 2018 Annual Report (for EPCGP)	Installation and testing of well TW-1, semi- annual groundwater sampling, and LNAPL recovery.
3/16/2020	Not in NMOCD files	Stantec 2019 Annual Groundwater Report (for EPCGP)	Semi-annual sampling and LNAPL recovery.
4/8/2021	nAUTOfAB000316 (Case # 3RP-204)	Stantec 2020 Annual Groundwater Report (for EPCGP)	Semi-annual groundwater sampling and quarterly LNAPL recovery. Approved 1/4/2022.
3/30/2022	nAUTOfAB000316 (Case # 3RP-204)	Stantec 2021 Annual Groundwater Report (for EPCGP)	Semi-annual groundwater sampling and quarterly LNAPL recovery. Accepted 5/22/2023.
9/28/2022	nAUTOfAB000316 (Case # 3RP-204)	Stantec Monitoring Well Installation Activities Work Plan (for EPCGP)	The Work Plan proposed the installation of four monitoring wells (MW-11 through MW- 14) at the site. Accepted 5/22/2023.
3/29/2023	nAUTOfAB000316 (Case # 3RP-204)	Stantec 2022 Annual Groundwater Report (for EPCGP)	MW-11 through MW-14 installation, semi- annual groundwater sampling and quarterly LNAPL recovery. Approved 5/22/2023.
3/28/2024	nAUTOfAB000316 (Case # 3RP-204)	Stantec 2023 Annual Groundwater Report (for EPCGP)	Semi-annual groundwater sampling and quarterly LNAPL recovery. Approved 5/22/2023.

APPENDIX B

NMOCD Notification of Site Activities



From: OCDOnline@state.nm.us
To: [Varsa, Steve](#)
Subject: The Oil Conservation Division (OCD) has accepted the application, Application ID: 325363
Date: Thursday, March 21, 2024 3:21:20 AM

To whom it may concern (c/o Stephen Varsa for El Paso Natural Gas Company, L.L.C),

The OCD has received the submitted *Notification for (Final) Sampling of a Release* (C-141N), for incident ID (n#) nAUTOfAB000316.

The sampling event is expected to take place:

When: 03/28/2024 @ 00:00

Where: E-04-25N-06W 0 FNL 0 FEL (36.430553,-107.480164)

Additional Information: Sean Clary 913-980-0281. Quarterly LNAPL recovery.

Additional Instructions: In Julian Canyon approximately 1000 feet west of Canyon Largo Road, near the Dogie Canyon Pump Station.

An OCD representative may be available onsite at the date and time reported. In the absence or presence of an OCD representative, sampling pursuant to 19.15.29.12.D NMAC is required. Sampling must be performed following an approved sampling plan or pursuant to 19.15.29.12.D.(1).(c) NMAC. Should there be a change in the scheduled date and time of the sampling event, then another notification should be resubmitted through OCD permitting as soon as possible.

- **Failure to notify the OCD of sampling events including any changes in date/time per the requirements of 19.15.29.12.D.(1).(a) NMAC, may result in the remediation closure samples not being accepted.**

If you have any questions regarding this application, or don't know why you have received this email, please contact us.

New Mexico Energy, Minerals and Natural Resources Department

1220 South St. Francis Drive

Santa Fe, NM 87505

Caution: This email originated from outside of Stantec. Please take extra precaution.

Attention: Ce courriel provient de l'extérieur de Stantec. Veuillez prendre des précautions supplémentaires.

Atención: Este correo electrónico proviene de fuera de Stantec. Por favor, tome precauciones adicionales.

From: [Varsa, Steve](#)
To: OCD.ENVIRO@EMNRD.NM.GOV
Cc: [Wiley, Joe](#); [Buchanan, Michael, EMNRD](#)
Subject: FW: El Paso CGP Company - Notice of upcoming groundwater sampling activities (nAUTOfAB000668 - State Gas Com N#1)
Date: Monday, May 13, 2024 7:23:34 AM

Please note the work at the subject location has been rescheduled for May 19, 2024. For the remaining sites below, note the correct year is 2024, not 2023.

Thank you,
Steve

Stephen Varsa, P.G., R.G.

Principal Hydrogeologist
 Stantec Environmental Services
 11311 Aurora Avenue
 Des Moines, Iowa 50322
 Direct: (515) 251-1020
 Cell: (515) 710-7523
 Office: (515) 253-0830
steve.varsa@stantec.com

The content of this email is the confidential property of Stantec and should not be copied, modified, retransmitted, or used for any purpose except with Stantec's written authorization. If you are not the intended recipient, please delete all copies and notify us immediately.

From: Varsa, Steve
Sent: Tuesday, May 7, 2024 4:34 PM
To: 'OCD.ENVIRO@EMNRD.NM.GOV' <OCD.ENVIRO@EMNRD.NM.GOV>
Cc: Bratcher, Mike, EMNRD <mike.bratcher@state.nm.us>; Buchanan, Michael, EMNRD <Michael.Buchanan@emnrn.nm.gov>; Wiley, Joe <Joe_Wiley@kindermorgan.com>
Subject: El Paso CGP Company - Notice of upcoming groundwater sampling activities

Pursuant to El Paso CGP's Groundwater Remediation Plan, this correspondence is to provide notice to the NMOCD of upcoming semi-annual groundwater sampling and monitoring activities at the following EPCGP project sites:

Site Name	Incident Number	Sample Date
Canada Mesa #2	nAUTOfAB000065	5/15/2023
Fields A#7A	nAUTOfAB000176	5/17/2023
Fogelson 4-1	nAUTOfAB000192	5/14/2023
Gallegos Canyon Unit #124E	nAUTOfAB000205	5/14/2023
GCU Com A #142E	nAUTOfAB000219	5/13/2023
James F. Bell #1E	nAUTOfAB000291	5/14/2023
Johnston Fed #4	nAUTOfAB000305	5/15/2023
Johnston Fed #6A	nAUTOfAB000309	5/15/2023
K27 LDO72	nAUTOfAB000316	5/16/2023
Knight #1	nAUTOfAB000324	5/14/2023
Lateral L 40 Line Drip	nAUTOfAB000335	5/17/2023
Sandoval GC A #1A	nAUTOfAB000635	5/15/2023
Standard Oil Com #1	nAUTOfAB000666	5/16/2023
State Gas Com N #1	nAUTOfAB000668	5/13/2023

Quarterly operation and maintenance activities on the Knight #1 air sparge/soil vapor extraction system (Incident number nAUTOAB000324) are to occur on Monday, May 13, 2024.

Please feel free to contact Joe Wiley, Project Manager at EPCGP, or me, if you need further information.

Thank you,
Steve

Stephen Varsa, P.G., R.G.

Principal Hydrogeologist
Stantec Environmental Services
11311 Aurora Avenue
Des Moines, Iowa 50322
Direct: (515) 251-1020
Cell: (515) 710-7523
Office: (515) 253-0830
steve.varsa@stantec.com

The content of this email is the confidential property of Stantec and should not be copied, modified, retransmitted, or used for any purpose except with Stantec's written authorization. If you are not the intended recipient, please delete all copies and notify us immediately.

From: [Varsa, Steve](#)
To: OCD.ENVIRO@EMNRD.NM.GOV
Cc: [Buchanan, Michael, EMNRD](#); [Bratcher, Michael, EMNRD](#); [Wiley, Joe](#)
Subject: FW: El Paso CGP Company - Notice of upcoming third calendar quarter 2024 site activities
Date: Thursday, September 19, 2024 11:26:03 AM

Stantec was able to complete the LNAPL recovery activities at the Canada Mesa #2 and K27 LD072 locations on August 29, 2024, due to poor road conditions. We are planning to conduct this work on September 24, 2024.

Thank you,
 Steve

Stephen Varsa, P.G., R.G.

Principal Hydrogeologist
 Stantec Environmental Services
 11311 Aurora Avenue
 Des Moines, Iowa 50322
 Direct: (515) 251-1020
 Cell: (515) 710-7523
 Office: (515) 253-0830
steve.varsa@stantec.com

The content of this email is the confidential property of Stantec and should not be copied, modified, retransmitted, or used for any purpose except with Stantec's written authorization. If you are not the intended recipient, please delete all copies and notify us immediately.

From: Varsa, Steve <steve.varsa@stantec.com>
Sent: Wednesday, August 21, 2024 9:44 AM
To: OCD.ENVIRO@EMNRD.NM.GOV
Cc: [Buchanan, Michael, EMNRD <Michael.Buchanan@emnrd.nm.gov>](mailto:Michael.Buchanan@emnrd.nm.gov); [Bratcher, Michael, EMNRD <mike.bratcher@emnrd.nm.gov>](mailto:mike.bratcher@emnrd.nm.gov); [Wiley, Joe <joe_wiley@kindermorgan.com>](mailto:joe_wiley@kindermorgan.com)
Subject: El Paso CGP Company - Notice of upcoming third calendar quarter 2024 site activities

This correspondence is to provide notice to the NMOCD of upcoming light nonaqueous-phase liquid (LNAPL) monitoring and recovery activities at the following El Paso CGP Company (EPCGP) project sites:

Site Name	Incident Number	Sample Date
Canada Mesa #2	nAUTOfAB000065	8/29/2024
Fields A#7A	nAUTOfAB000176	8/27/2024
Gallegos Canyon Unit #124E	nAUTOfAB000205	8/28/2024
Johnston Fed #4	nAUTOfAB000305	8/30/2024
Johnston Fed #6A	nAUTOfAB000309	8/30/2024
K27 LDO72	nAUTOfAB000316	8/29/2024
Knight #1	nAUTOfAB000324	8/28/2024
State Gas Com N #1	nAUTOfAB000668	8/26/2024

Quarterly groundwater sampling at the Gallegos Canyon Unit #124E and Johnston Federal #6A locations are also to be done concurrent to the LNAPL monitoring and recovery events.

Quarterly operation and maintenance activities on the Knight #1 air sparge/soil vapor extraction system (Incident number nAUTOAB000324) are to occur on Tuesday and Wednesday, August 27 and 28, 2024.

Please feel free to contact Joe Wiley, Project Manager at EPCGP, or me, if you need further information.

Thank you,
Steve

Stephen Varsa, P.G., R.G.

Principal Hydrogeologist
Stantec Environmental Services
11311 Aurora Avenue
Des Moines, Iowa 50322
Direct: (515) 251-1020
Cell: (515) 710-7523
Office: (515) 253-0830
steve.varsa@stantec.com

From: [Varsa, Steve](#)
To: OCD.ENVIRO@EMNRD.NM.GOV
Cc: [Buchanan, Michael, EMNRD](#); [Bratcher, Michael, EMNRD](#); [Wiley, Joe](#)
Subject: El Paso CGP Company - Notice of upcoming groundwater sampling activities
Date: Monday, October 28, 2024 11:07:52 AM

Pursuant to El Paso CGP's Groundwater Remediation Plan, this correspondence is to provide notice to the NMOCED of upcoming semi-annual groundwater sampling and monitoring activities at the following EPCGP project sites:

Site Name	Incident Number	Sample Date
Canada Mesa #2	nAUTOfAB000065	11/9/2024
Fields A#7A	nAUTOfAB000176	11/8/2024
Fogelson 4-1	nAUTOfAB000192	11/5/2024
Gallegos Canyon Unit #124E	nAUTOfAB000205	11/9/2024
GCU Com A #142E	nAUTOfAB000219	11/7/2024
James F. Bell #1E	nAUTOfAB000291	11/7/2024
Johnston Fed #4	nAUTOfAB000305	11/8/2024
Johnston Fed #6A	nAUTOfAB000309	11/8/2024
K27 LDO72	nAUTOfAB000316	11/9/2024
Knight #1	nAUTOfAB000324	11/5/2024
Lateral L 40 Line Drip	nAUTOfAB000335	11/10/2024
Sandoval GC A #1A	nAUTOfAB000635	11/8/2024
Standard Oil Com #1	nAUTOfAB000666	11/9/2024
State Gas Com N #1	nAUTOfAB000668	11/6/2024

Quarterly operation and maintenance activities on the Knight #1 air sparge/soil vapor extraction system (Incident number nAUTOAB000324) are to occur on Monday and Tuesday, November 4 and 5, 2024.

Please feel free to contact Joe Wiley, Project Manager at EPCGP, or me, if you need further information.

Thank you,
 Steve

Stephen Varsa, P.G., R.G.
 Principal Hydrogeologist
 Stantec Environmental Services
 11311 Aurora Avenue
 Des Moines, Iowa 50322
 Direct: (515) 251-1020
 Cell: (515) 710-7523
 Office: (515) 253-0830
steve.varsa@stantec.com

The content of this email is the confidential property of Stantec and should not be copied, modified, retransmitted, or used for any purpose except with Stantec's written authorization. If you are not the intended recipient, please delete all copies and notify us immediately.

APPENDIX C

Waste Disposal Documentation





Bill of Lading

MANIFEST # **84352**
 GENERATOR EL Paso
 POINT OF ORIGIN See 138 For list
 TRANSPORTER Envirotech
 DATE 03/29/24 JOB # 14073-0090

PHONE: (505) 632-0615 • 5796 U.S. HIGHWAY 64 • FARMINGTON, NEW MEXICO 87401

LOAD NO.	COMPLETE DESCRIPTION OF SHIPMENT						TRANSPORTING COMPANY			
	DESTINATION	MATERIAL	GRID	YDS	BBLs	DRUMS	TKT#	TRK#	TIME	DRIVER SIGNATURE
1	BF	Tank bottoms groundwater			1	-	-	983	1000	<i>[Signature]</i>

RESULTS		LANDFARM EMPLOYEE <i>Cory Polinson</i>	NOTES
-201	CHLORIDE TEST 1		
	CHLORIDE TEST	<input type="checkbox"/> Soil w/ Debris <input type="checkbox"/> After Hours/Weekend Reveal <input type="checkbox"/> Scrape Out <input type="checkbox"/> Wash Out	
	CHLORIDE TEST	By signing as the driver/transporter, I certify the material hauled from the above location has not been added to or tampered with. I certify the material is from the above mentioned Generator/Point of Origin and that no additional material has been added or mixed into the load. Landfarm employee signature is certification of the above material being received and placed accordingly.	
PASS	PAINT FILTER TEST 1		

Generator Onsite Contact _____ Phone **ENTERED APR 02 2024**

Signatures required prior to distribution of the legal document. DISTRIBUTION: White - Company Records / Billing Yellow - Customer Pink - LF Copy



BOL# 84352

CHLORIDE TESTING / PAINT FILTER TESTING

DATE 03/29/24 TIME 1000

Attach test strip here

CUSTOMER EL Paso

SITE See the C-138 For List

DRIVER Austin Foutz

SAMPLE Soil Straight With Dirt X

CHLORIDE TEST - 281 mg/Kg

ACCEPTED YES X NO

PAINT FILTER TEST Time started 1000 Time completed 1012

PASS YES X NO

SAMPLER/ANALYST Cary Rolinso





BOL# 85181

CHLORIDE TESTING / PAINT FILTER TESTING

DATE 05/21/24 TIME 0945

Attach test strip here

CUSTOMER EL PASO

SITE See C-138 For Johnston Fed 4

DRIVER [Signature]

SAMPLE Soil Straight With Dirt X

CHLORIDE TEST 434 mg/Kg

ACCEPTED YES X NO

PAINT FILTER TEST Time started 0945 Time completed 0959

PASS YES X NO

SAMPLER/ANALYST [Signature]





BOL# 87518

CHLORIDE TESTING / PAINT FILTER TESTING

DATE 09/24/24 TIME 1600 Attach test strip here

CUSTOMER EL PASO

SITE Canada mesa #2, K27 Line Drip

DRIVER Justin Tuite

SAMPLE Soil Straight With Dirt

CHLORIDE TEST 274 mg/Kg

ACCEPTED YES NO

PAINT FILTER TEST Time started 1600 Time completed 1610

PASS YES NO

SAMPLER/ANALYST [Signature]





BOL# 88384

CHLORIDE TESTING / PAINT FILTER TESTING

DATE 11/15/24 TIME 11:00 Attach test strip here

CUSTOMER EL PASO

SITE Rio vista ^{SEE LIST} Comp station ^{PEU} See BOL for List

DRIVER [Signature]

SAMPLE Soil Straight _____ With Dirt X

CHLORIDE TEST 400 mg/Kg

ACCEPTED YES X NO _____

PAINT FILTER TEST Time started 11:00 Time completed 11:10

PASS YES X NO _____

SAMPLER/ANALYST [Signature]



APPENDIX D

Groundwater Analytical Lab Reports





Environment Testing

- 1
- 2
- 3
- 4
- 5
- 6
- 7
- 8
- 9
- 10
- 11
- 12
- 13
- 14

ANALYTICAL REPORT

PREPARED FOR

Attn: Steve Varsa
 Stantec Consulting Services, Inc.
 11311 Aurora Avenue
 Des Moines, Iowa 50322-7904

Generated 5/31/2024 8:59:23 PM

JOB DESCRIPTION

K27 LD072.00

JOB NUMBER

400-256232-1

Eurofins Pensacola
 3355 McLemore Drive
 Pensacola FL 32514



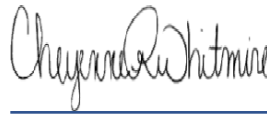
Eurofins Pensacola

Job Notes

This report may not be reproduced except in full, and with written approval from the laboratory. The results relate only to the samples tested. For questions please contact the Project Manager at the e-mail address or telephone number listed on this page.

The test results in this report relate only to the samples as received by the laboratory and will meet all requirements of the methodology, with any exceptions noted. This report shall not be reproduced except in full, without the express written approval of the laboratory. All questions should be directed to the Eurofins Environment Testing Southeast, LLC Project Manager.

Authorization



Generated
5/31/2024 8:59:23 PM

Authorized for release by
Cheyenne Whitmire, Senior Project Manager
Cheyenne.Whitmire@et.eurofinsus.com
(850)471-6222

- 1
- 2
- 3
- 4
- 5
- 6
- 7
- 8
- 9
- 10
- 11
- 12
- 13
- 14

Client: Stantec Consulting Services, Inc.
Project/Site: K27 LD072.00

Laboratory Job ID: 400-256232-1

Table of Contents

Cover Page	1
Table of Contents	3
Case Narrative	4
Detection Summary	5
Method Summary	7
Sample Summary	8
Client Sample Results	9
Definitions	24
Chronicle	25
QC Association	29
QC Sample Results	30
Chain of Custody	33
Receipt Checklists	35
Certification Summary	36



Case Narrative

Client: Stantec Consulting Services, Inc.
Project: K27 LD072.00

Job ID: 400-256232-1

Job ID: 400-256232-1

Eurofins Pensacola

Job Narrative 400-256232-1

Receipt

The samples were received on 5/18/2024 8:32 AM. Unless otherwise noted below, the samples arrived in good condition, and where required, properly preserved and on ice. The temperature of the cooler at receipt was 0.9° C.

GC/MS VOA

Method 8260D: The matrix spike (MS) recoveries for analytical batch 400-672311 were outside control limits. Sample matrix interference is suspected because the associated laboratory control sample (LCS) recovery was within acceptance limits.

Method 8260D: The following sample was diluted to bring the concentration of target analytes within the calibration range: MW-2R (400-256232-4). Elevated reporting limits (RLs) are provided.

Method 8260D: The matrix spike (MS) recoveries for analytical batch 400-672480 were outside control limits for one or more analytes. See QC Sample Results for detail. Sample matrix interference and/or non-homogeneity are suspected because the associated laboratory control sample (LCS) recovery is within acceptance limits.

Method 8260D: The matrix spike / matrix spike duplicate (MS/MSD) precision for analytical batch 400-672480 was outside control limits. Sample matrix interference is suspected.

No additional analytical or quality issues were noted, other than those described above or in the Definitions/Glossary page.

- 1
- 2
- 3
- 4
- 5
- 6
- 7
- 8
- 9
- 10
- 11
- 12
- 13
- 14

Eurofins Pensacola

Detection Summary

Client: Stantec Consulting Services, Inc.
Project/Site: K27 LD072.00

Job ID: 400-256232-1

Client Sample ID: TB-01

Lab Sample ID: 400-256232-1

No Detections.

Client Sample ID: DUP-01

Lab Sample ID: 400-256232-2

Analyte	Result	Qualifier	RL	MDL	Unit	Dil Fac	D	Method	Prep Type
Benzene	180		1.0		ug/L	1		8260D	Total/NA
Ethylbenzene	1.5		1.0		ug/L	1		8260D	Total/NA
Toluene	71		1.0		ug/L	1		8260D	Total/NA
Xylenes, Total	70		10		ug/L	1		8260D	Total/NA

Client Sample ID: MW-1

Lab Sample ID: 400-256232-3

Analyte	Result	Qualifier	RL	MDL	Unit	Dil Fac	D	Method	Prep Type
Benzene	180		1.0		ug/L	1		8260D	Total/NA
Ethylbenzene	1.5		1.0		ug/L	1		8260D	Total/NA
Toluene	58		1.0		ug/L	1		8260D	Total/NA
Xylenes, Total	61		10		ug/L	1		8260D	Total/NA

Client Sample ID: MW-2R

Lab Sample ID: 400-256232-4

Analyte	Result	Qualifier	RL	MDL	Unit	Dil Fac	D	Method	Prep Type
Benzene	210		20		ug/L	20		8260D	Total/NA
Ethylbenzene	250		20		ug/L	20		8260D	Total/NA
Toluene	1300		20		ug/L	20		8260D	Total/NA
Xylenes, Total	1700		200		ug/L	20		8260D	Total/NA

Client Sample ID: MW-3R

Lab Sample ID: 400-256232-5

No Detections.

Client Sample ID: MW-4

Lab Sample ID: 400-256232-6

No Detections.

Client Sample ID: MW-5

Lab Sample ID: 400-256232-7

No Detections.

Client Sample ID: MW-6

Lab Sample ID: 400-256232-8

Analyte	Result	Qualifier	RL	MDL	Unit	Dil Fac	D	Method	Prep Type
Benzene	1.8		1.0		ug/L	1		8260D	Total/NA
Ethylbenzene	18		1.0		ug/L	1		8260D	Total/NA
Xylenes, Total	90		10		ug/L	1		8260D	Total/NA

Client Sample ID: MW-7

Lab Sample ID: 400-256232-9

Analyte	Result	Qualifier	RL	MDL	Unit	Dil Fac	D	Method	Prep Type
Benzene	7.9		1.0		ug/L	1		8260D	Total/NA

Client Sample ID: MW-8

Lab Sample ID: 400-256232-10

Analyte	Result	Qualifier	RL	MDL	Unit	Dil Fac	D	Method	Prep Type
Ethylbenzene	3.4		1.0		ug/L	1		8260D	Total/NA

Client Sample ID: MW-9

Lab Sample ID: 400-256232-11

No Detections.

This Detection Summary does not include radiochemical test results.

Eurofins Pensacola

Detection Summary

Client: Stantec Consulting Services, Inc.
Project/Site: K27 LD072.00

Job ID: 400-256232-1

Client Sample ID: MW-10

Lab Sample ID: 400-256232-12

No Detections.

Client Sample ID: MW-12

Lab Sample ID: 400-256232-13

No Detections.

Client Sample ID: MW-13

Lab Sample ID: 400-256232-14

No Detections.

Client Sample ID: MW-14

Lab Sample ID: 400-256232-15

No Detections.

- 1
- 2
- 3
- 4
- 5
- 6
- 7
- 8
- 9
- 10
- 11
- 12
- 13
- 14

This Detection Summary does not include radiochemical test results.

Eurofins Pensacola

Method Summary

Client: Stantec Consulting Services, Inc.
Project/Site: K27 LD072.00

Job ID: 400-256232-1

Method	Method Description	Protocol	Laboratory
8260D	Volatile Organic Compounds by GC/MS	SW846	EET PEN
5030C	Purge and Trap	SW846	EET PEN

Protocol References:

SW846 = "Test Methods For Evaluating Solid Waste, Physical/Chemical Methods", Third Edition, November 1986 And Its Updates.

Laboratory References:

EET PEN = Eurofins Pensacola, 3355 McLemore Drive, Pensacola, FL 32514, TEL (850)474-1001

- 1
- 2
- 3
- 4
- 5
- 6
- 7
- 8
- 9
- 10
- 11
- 12
- 13
- 14

Sample Summary

Client: Stantec Consulting Services, Inc.
Project/Site: K27 LD072.00

Job ID: 400-256232-1

Lab Sample ID	Client Sample ID	Matrix	Collected	Received
400-256232-1	TB-01	Water	05/16/24 12:30	05/18/24 08:32
400-256232-2	DUP-01	Water	05/16/24 00:00	05/18/24 08:32
400-256232-3	MW-1	Water	05/16/24 13:20	05/18/24 08:32
400-256232-4	MW-2R	Water	05/16/24 13:30	05/18/24 08:32
400-256232-5	MW-3R	Water	05/16/24 13:35	05/18/24 08:32
400-256232-6	MW-4	Water	05/16/24 13:40	05/18/24 08:32
400-256232-7	MW-5	Water	05/16/24 13:50	05/18/24 08:32
400-256232-8	MW-6	Water	05/16/24 13:55	05/18/24 08:32
400-256232-9	MW-7	Water	05/16/24 14:00	05/18/24 08:32
400-256232-10	MW-8	Water	05/16/24 14:07	05/18/24 08:32
400-256232-11	MW-9	Water	05/16/24 14:15	05/18/24 08:32
400-256232-12	MW-10	Water	05/16/24 14:20	05/18/24 08:32
400-256232-13	MW-12	Water	05/16/24 14:25	05/18/24 08:32
400-256232-14	MW-13	Water	05/16/24 14:32	05/18/24 08:32
400-256232-15	MW-14	Water	05/16/24 14:40	05/18/24 08:32

- 1
- 2
- 3
- 4
- 5
- 6
- 7
- 8
- 9
- 10
- 11
- 12
- 13
- 14

Client Sample Results

Client: Stantec Consulting Services, Inc.
 Project/Site: K27 LD072.00

Job ID: 400-256232-1

Client Sample ID: TB-01

Lab Sample ID: 400-256232-1

Date Collected: 05/16/24 12:30

Matrix: Water

Date Received: 05/18/24 08:32

Method: SW846 8260D - Volatile Organic Compounds by GC/MS

Analyte	Result	Qualifier	RL	MDL	Unit	D	Prepared	Analyzed	Dil Fac
Benzene	<1.0		1.0		ug/L			05/29/24 15:41	1
Ethylbenzene	<1.0		1.0		ug/L			05/29/24 15:41	1
Toluene	<1.0		1.0		ug/L			05/29/24 15:41	1
Xylenes, Total	<10		10		ug/L			05/29/24 15:41	1

Surrogate	%Recovery	Qualifier	Limits	Prepared	Analyzed	Dil Fac
4-Bromofluorobenzene	100		72 - 130		05/29/24 15:41	1
Dibromofluoromethane	108		75 - 126		05/29/24 15:41	1
Toluene-d8 (Surr)	101		64 - 132		05/29/24 15:41	1

Client Sample Results

Client: Stantec Consulting Services, Inc.
 Project/Site: K27 LD072.00

Job ID: 400-256232-1

Client Sample ID: DUP-01
Date Collected: 05/16/24 00:00
Date Received: 05/18/24 08:32

Lab Sample ID: 400-256232-2
Matrix: Water

Method: SW846 8260D - Volatile Organic Compounds by GC/MS

Analyte	Result	Qualifier	RL	MDL	Unit	D	Prepared	Analyzed	Dil Fac
Benzene	180		1.0		ug/L			05/29/24 16:02	1
Ethylbenzene	1.5		1.0		ug/L			05/29/24 16:02	1
Toluene	71		1.0		ug/L			05/29/24 16:02	1
Xylenes, Total	70		10		ug/L			05/29/24 16:02	1

Surrogate	%Recovery	Qualifier	Limits	Prepared	Analyzed	Dil Fac
4-Bromofluorobenzene	104		72 - 130		05/29/24 16:02	1
Dibromofluoromethane	106		75 - 126		05/29/24 16:02	1
Toluene-d8 (Surr)	103		64 - 132		05/29/24 16:02	1

Client Sample Results

Client: Stantec Consulting Services, Inc.
 Project/Site: K27 LD072.00

Job ID: 400-256232-1

Client Sample ID: MW-1

Lab Sample ID: 400-256232-3

Date Collected: 05/16/24 13:20

Matrix: Water

Date Received: 05/18/24 08:32

Method: SW846 8260D - Volatile Organic Compounds by GC/MS

Analyte	Result	Qualifier	RL	MDL	Unit	D	Prepared	Analyzed	Dil Fac
Benzene	180		1.0		ug/L			05/29/24 16:23	1
Ethylbenzene	1.5		1.0		ug/L			05/29/24 16:23	1
Toluene	58		1.0		ug/L			05/29/24 16:23	1
Xylenes, Total	61		10		ug/L			05/29/24 16:23	1

Surrogate	%Recovery	Qualifier	Limits	Prepared	Analyzed	Dil Fac
4-Bromofluorobenzene	105		72 - 130		05/29/24 16:23	1
Dibromofluoromethane	107		75 - 126		05/29/24 16:23	1
Toluene-d8 (Surr)	100		64 - 132		05/29/24 16:23	1

Client Sample Results

Client: Stantec Consulting Services, Inc.
 Project/Site: K27 LD072.00

Job ID: 400-256232-1

Client Sample ID: MW-2R
Date Collected: 05/16/24 13:30
Date Received: 05/18/24 08:32

Lab Sample ID: 400-256232-4
Matrix: Water

Method: SW846 8260D - Volatile Organic Compounds by GC/MS

Analyte	Result	Qualifier	RL	MDL	Unit	D	Prepared	Analyzed	Dil Fac
Benzene	210		20		ug/L			05/23/24 11:18	20
Ethylbenzene	250		20		ug/L			05/23/24 11:18	20
Toluene	1300		20		ug/L			05/23/24 11:18	20
Xylenes, Total	1700		200		ug/L			05/23/24 11:18	20

Surrogate	%Recovery	Qualifier	Limits	Prepared	Analyzed	Dil Fac
4-Bromofluorobenzene	111		72 - 130		05/23/24 11:18	20
Dibromofluoromethane	99		75 - 126		05/23/24 11:18	20
Toluene-d8 (Surr)	103		64 - 132		05/23/24 11:18	20

- 1
- 2
- 3
- 4
- 5
- 6
- 7
- 8
- 9
- 10
- 11
- 12
- 13
- 14

Client Sample Results

Client: Stantec Consulting Services, Inc.
 Project/Site: K27 LD072.00

Job ID: 400-256232-1

Client Sample ID: MW-3R
Date Collected: 05/16/24 13:35
Date Received: 05/18/24 08:32

Lab Sample ID: 400-256232-5
Matrix: Water

Method: SW846 8260D - Volatile Organic Compounds by GC/MS

Analyte	Result	Qualifier	RL	MDL	Unit	D	Prepared	Analyzed	Dil Fac
Benzene	<1.0		1.0		ug/L			05/23/24 08:27	1
Ethylbenzene	<1.0	F2	1.0		ug/L			05/23/24 08:27	1
Toluene	<1.0	F1	1.0		ug/L			05/23/24 08:27	1
Xylenes, Total	<10		10		ug/L			05/23/24 08:27	1

Surrogate	%Recovery	Qualifier	Limits	Prepared	Analyzed	Dil Fac
4-Bromofluorobenzene	111		72 - 130		05/23/24 08:27	1
Dibromofluoromethane	102		75 - 126		05/23/24 08:27	1
Toluene-d8 (Surr)	101		64 - 132		05/23/24 08:27	1

- 1
- 2
- 3
- 4
- 5
- 6
- 7
- 8
- 9
- 10
- 11
- 12
- 13
- 14

Client Sample Results

Client: Stantec Consulting Services, Inc.
 Project/Site: K27 LD072.00

Job ID: 400-256232-1

Client Sample ID: MW-4

Lab Sample ID: 400-256232-6

Date Collected: 05/16/24 13:40

Matrix: Water

Date Received: 05/18/24 08:32

Method: SW846 8260D - Volatile Organic Compounds by GC/MS

Analyte	Result	Qualifier	RL	MDL	Unit	D	Prepared	Analyzed	Dil Fac
Benzene	<1.0		1.0		ug/L			05/22/24 16:01	1
Ethylbenzene	<1.0		1.0		ug/L			05/22/24 16:01	1
Toluene	<1.0		1.0		ug/L			05/22/24 16:01	1
Xylenes, Total	<10		10		ug/L			05/22/24 16:01	1

Surrogate	%Recovery	Qualifier	Limits	Prepared	Analyzed	Dil Fac
4-Bromofluorobenzene	110		72 - 130		05/22/24 16:01	1
Dibromofluoromethane	99		75 - 126		05/22/24 16:01	1
Toluene-d8 (Surr)	101		64 - 132		05/22/24 16:01	1

Client Sample Results

Client: Stantec Consulting Services, Inc.
 Project/Site: K27 LD072.00

Job ID: 400-256232-1

Client Sample ID: MW-5

Lab Sample ID: 400-256232-7

Date Collected: 05/16/24 13:50

Matrix: Water

Date Received: 05/18/24 08:32

Method: SW846 8260D - Volatile Organic Compounds by GC/MS

Analyte	Result	Qualifier	RL	MDL	Unit	D	Prepared	Analyzed	Dil Fac
Benzene	<1.0		1.0		ug/L			05/22/24 16:25	1
Ethylbenzene	<1.0		1.0		ug/L			05/22/24 16:25	1
Toluene	<1.0		1.0		ug/L			05/22/24 16:25	1
Xylenes, Total	<10		10		ug/L			05/22/24 16:25	1

Surrogate	%Recovery	Qualifier	Limits	Prepared	Analyzed	Dil Fac
4-Bromofluorobenzene	112		72 - 130		05/22/24 16:25	1
Dibromofluoromethane	99		75 - 126		05/22/24 16:25	1
Toluene-d8 (Surr)	102		64 - 132		05/22/24 16:25	1

Client Sample Results

Client: Stantec Consulting Services, Inc.
 Project/Site: K27 LD072.00

Job ID: 400-256232-1

Client Sample ID: MW-6

Lab Sample ID: 400-256232-8

Date Collected: 05/16/24 13:55

Matrix: Water

Date Received: 05/18/24 08:32

Method: SW846 8260D - Volatile Organic Compounds by GC/MS

Analyte	Result	Qualifier	RL	MDL	Unit	D	Prepared	Analyzed	Dil Fac
Benzene	1.8		1.0		ug/L			05/22/24 16:49	1
Ethylbenzene	18		1.0		ug/L			05/22/24 16:49	1
Toluene	<1.0		1.0		ug/L			05/22/24 16:49	1
Xylenes, Total	90		10		ug/L			05/22/24 16:49	1

Surrogate	%Recovery	Qualifier	Limits	Prepared	Analyzed	Dil Fac
4-Bromofluorobenzene	110		72 - 130		05/22/24 16:49	1
Dibromofluoromethane	100		75 - 126		05/22/24 16:49	1
Toluene-d8 (Surr)	129		64 - 132		05/22/24 16:49	1

Client Sample Results

Client: Stantec Consulting Services, Inc.
 Project/Site: K27 LD072.00

Job ID: 400-256232-1

Client Sample ID: MW-7

Lab Sample ID: 400-256232-9

Date Collected: 05/16/24 14:00

Matrix: Water

Date Received: 05/18/24 08:32

Method: SW846 8260D - Volatile Organic Compounds by GC/MS

Analyte	Result	Qualifier	RL	MDL	Unit	D	Prepared	Analyzed	Dil Fac
Benzene	7.9		1.0		ug/L			05/29/24 16:44	1
Ethylbenzene	<1.0		1.0		ug/L			05/29/24 16:44	1
Toluene	<1.0		1.0		ug/L			05/29/24 16:44	1
Xylenes, Total	<10		10		ug/L			05/29/24 16:44	1

Surrogate	%Recovery	Qualifier	Limits	Prepared	Analyzed	Dil Fac
4-Bromofluorobenzene	99		72 - 130		05/29/24 16:44	1
Dibromofluoromethane	110		75 - 126		05/29/24 16:44	1
Toluene-d8 (Surr)	99		64 - 132		05/29/24 16:44	1

Client Sample Results

Client: Stantec Consulting Services, Inc.
 Project/Site: K27 LD072.00

Job ID: 400-256232-1

Client Sample ID: MW-8

Lab Sample ID: 400-256232-10

Date Collected: 05/16/24 14:07

Matrix: Water

Date Received: 05/18/24 08:32

Method: SW846 8260D - Volatile Organic Compounds by GC/MS

Analyte	Result	Qualifier	RL	MDL	Unit	D	Prepared	Analyzed	Dil Fac
Benzene	<1.0		1.0		ug/L			05/29/24 17:05	1
Ethylbenzene	3.4		1.0		ug/L			05/29/24 17:05	1
Toluene	<1.0		1.0		ug/L			05/29/24 17:05	1
Xylenes, Total	<10		10		ug/L			05/29/24 17:05	1

Surrogate	%Recovery	Qualifier	Limits	Prepared	Analyzed	Dil Fac
4-Bromofluorobenzene	99		72 - 130		05/29/24 17:05	1
Dibromofluoromethane	108		75 - 126		05/29/24 17:05	1
Toluene-d8 (Surr)	102		64 - 132		05/29/24 17:05	1

Client Sample Results

Client: Stantec Consulting Services, Inc.
 Project/Site: K27 LD072.00

Job ID: 400-256232-1

Client Sample ID: MW-9

Lab Sample ID: 400-256232-11

Date Collected: 05/16/24 14:15

Matrix: Water

Date Received: 05/18/24 08:32

Method: SW846 8260D - Volatile Organic Compounds by GC/MS

Analyte	Result	Qualifier	RL	MDL	Unit	D	Prepared	Analyzed	Dil Fac
Benzene	<1.0		1.0		ug/L			05/29/24 17:26	1
Ethylbenzene	<1.0		1.0		ug/L			05/29/24 17:26	1
Toluene	<1.0		1.0		ug/L			05/29/24 17:26	1
Xylenes, Total	<10		10		ug/L			05/29/24 17:26	1

Surrogate	%Recovery	Qualifier	Limits	Prepared	Analyzed	Dil Fac
4-Bromofluorobenzene	101		72 - 130		05/29/24 17:26	1
Dibromofluoromethane	111		75 - 126		05/29/24 17:26	1
Toluene-d8 (Surr)	102		64 - 132		05/29/24 17:26	1

Client Sample Results

Client: Stantec Consulting Services, Inc.
 Project/Site: K27 LD072.00

Job ID: 400-256232-1

Client Sample ID: MW-10
Date Collected: 05/16/24 14:20
Date Received: 05/18/24 08:32

Lab Sample ID: 400-256232-12
Matrix: Water

Method: SW846 8260D - Volatile Organic Compounds by GC/MS

Analyte	Result	Qualifier	RL	MDL	Unit	D	Prepared	Analyzed	Dil Fac
Benzene	<1.0		1.0		ug/L			05/29/24 17:46	1
Ethylbenzene	<1.0		1.0		ug/L			05/29/24 17:46	1
Toluene	<1.0		1.0		ug/L			05/29/24 17:46	1
Xylenes, Total	<10		10		ug/L			05/29/24 17:46	1

Surrogate	%Recovery	Qualifier	Limits	Prepared	Analyzed	Dil Fac
4-Bromofluorobenzene	105		72 - 130		05/29/24 17:46	1
Dibromofluoromethane	109		75 - 126		05/29/24 17:46	1
Toluene-d8 (Surr)	103		64 - 132		05/29/24 17:46	1

Client Sample Results

Client: Stantec Consulting Services, Inc.
 Project/Site: K27 LD072.00

Job ID: 400-256232-1

Client Sample ID: MW-12
Date Collected: 05/16/24 14:25
Date Received: 05/18/24 08:32

Lab Sample ID: 400-256232-13
Matrix: Water

Method: SW846 8260D - Volatile Organic Compounds by GC/MS

Analyte	Result	Qualifier	RL	MDL	Unit	D	Prepared	Analyzed	Dil Fac
Benzene	<1.0		1.0		ug/L			05/29/24 18:07	1
Ethylbenzene	<1.0		1.0		ug/L			05/29/24 18:07	1
Toluene	<1.0		1.0		ug/L			05/29/24 18:07	1
Xylenes, Total	<10		10		ug/L			05/29/24 18:07	1

Surrogate	%Recovery	Qualifier	Limits	Prepared	Analyzed	Dil Fac
4-Bromofluorobenzene	100		72 - 130		05/29/24 18:07	1
Dibromofluoromethane	109		75 - 126		05/29/24 18:07	1
Toluene-d8 (Surr)	104		64 - 132		05/29/24 18:07	1

Client Sample Results

Client: Stantec Consulting Services, Inc.
 Project/Site: K27 LD072.00

Job ID: 400-256232-1

Client Sample ID: MW-13
Date Collected: 05/16/24 14:32
Date Received: 05/18/24 08:32

Lab Sample ID: 400-256232-14
Matrix: Water

Method: SW846 8260D - Volatile Organic Compounds by GC/MS

Analyte	Result	Qualifier	RL	MDL	Unit	D	Prepared	Analyzed	Dil Fac
Benzene	<1.0		1.0		ug/L			05/29/24 18:28	1
Ethylbenzene	<1.0		1.0		ug/L			05/29/24 18:28	1
Toluene	<1.0		1.0		ug/L			05/29/24 18:28	1
Xylenes, Total	<10		10		ug/L			05/29/24 18:28	1

Surrogate	%Recovery	Qualifier	Limits	Prepared	Analyzed	Dil Fac
4-Bromofluorobenzene	99		72 - 130		05/29/24 18:28	1
Dibromofluoromethane	110		75 - 126		05/29/24 18:28	1
Toluene-d8 (Surr)	100		64 - 132		05/29/24 18:28	1

Client Sample Results

Client: Stantec Consulting Services, Inc.
 Project/Site: K27 LD072.00

Job ID: 400-256232-1

Client Sample ID: MW-14
Date Collected: 05/16/24 14:40
Date Received: 05/18/24 08:32

Lab Sample ID: 400-256232-15
Matrix: Water

Method: SW846 8260D - Volatile Organic Compounds by GC/MS

Analyte	Result	Qualifier	RL	MDL	Unit	D	Prepared	Analyzed	Dil Fac
Benzene	<1.0		1.0		ug/L			05/29/24 18:51	1
Ethylbenzene	<1.0		1.0		ug/L			05/29/24 18:51	1
Toluene	<1.0		1.0		ug/L			05/29/24 18:51	1
Xylenes, Total	<10		10		ug/L			05/29/24 18:51	1

Surrogate	%Recovery	Qualifier	Limits	Prepared	Analyzed	Dil Fac
4-Bromofluorobenzene	98		72 - 130		05/29/24 18:51	1
Dibromofluoromethane	110		75 - 126		05/29/24 18:51	1
Toluene-d8 (Surr)	99		64 - 132		05/29/24 18:51	1

Definitions/Glossary

Client: Stantec Consulting Services, Inc.
Project/Site: K27 LD072.00

Job ID: 400-256232-1

Qualifiers

GC/MS VOA

Qualifier	Qualifier Description
F1	MS and/or MSD recovery exceeds control limits.
F2	MS/MSD RPD exceeds control limits

Glossary

Abbreviation	These commonly used abbreviations may or may not be present in this report.
α	Listed under the "D" column to designate that the result is reported on a dry weight basis
%R	Percent Recovery
CFL	Contains Free Liquid
CFU	Colony Forming Unit
CNF	Contains No Free Liquid
DER	Duplicate Error Ratio (normalized absolute difference)
Dil Fac	Dilution Factor
DL	Detection Limit (DoD/DOE)
DL, RA, RE, IN	Indicates a Dilution, Re-analysis, Re-extraction, or additional Initial metals/anion analysis of the sample
DLC	Decision Level Concentration (Radiochemistry)
EDL	Estimated Detection Limit (Dioxin)
LOD	Limit of Detection (DoD/DOE)
LOQ	Limit of Quantitation (DoD/DOE)
MCL	EPA recommended "Maximum Contaminant Level"
MDA	Minimum Detectable Activity (Radiochemistry)
MDC	Minimum Detectable Concentration (Radiochemistry)
MDL	Method Detection Limit
ML	Minimum Level (Dioxin)
MPN	Most Probable Number
MQL	Method Quantitation Limit
NC	Not Calculated
ND	Not Detected at the reporting limit (or MDL or EDL if shown)
NEG	Negative / Absent
POS	Positive / Present
PQL	Practical Quantitation Limit
PRES	Presumptive
QC	Quality Control
RER	Relative Error Ratio (Radiochemistry)
RL	Reporting Limit or Requested Limit (Radiochemistry)
RPD	Relative Percent Difference, a measure of the relative difference between two points
TEF	Toxicity Equivalent Factor (Dioxin)
TEQ	Toxicity Equivalent Quotient (Dioxin)
TNTC	Too Numerous To Count

Lab Chronicle

Client: Stantec Consulting Services, Inc.
Project/Site: K27 LD072.00

Job ID: 400-256232-1

Client Sample ID: TB-01
Date Collected: 05/16/24 12:30
Date Received: 05/18/24 08:32

Lab Sample ID: 400-256232-1
Matrix: Water

Prep Type	Batch Type	Batch Method	Run	Dil Factor	Initial Amount	Final Amount	Batch Number	Prepared or Analyzed	Analyst	Lab
Total/NA	Analysis	8260D		1	5 mL	5 mL	672969	05/29/24 15:41	CAR	EET PEN

Client Sample ID: DUP-01
Date Collected: 05/16/24 00:00
Date Received: 05/18/24 08:32

Lab Sample ID: 400-256232-2
Matrix: Water

Prep Type	Batch Type	Batch Method	Run	Dil Factor	Initial Amount	Final Amount	Batch Number	Prepared or Analyzed	Analyst	Lab
Total/NA	Analysis	8260D		1	5 mL	5 mL	672969	05/29/24 16:02	CAR	EET PEN

Client Sample ID: MW-1
Date Collected: 05/16/24 13:20
Date Received: 05/18/24 08:32

Lab Sample ID: 400-256232-3
Matrix: Water

Prep Type	Batch Type	Batch Method	Run	Dil Factor	Initial Amount	Final Amount	Batch Number	Prepared or Analyzed	Analyst	Lab
Total/NA	Analysis	8260D		1	5 mL	5 mL	672969	05/29/24 16:23	CAR	EET PEN

Client Sample ID: MW-2R
Date Collected: 05/16/24 13:30
Date Received: 05/18/24 08:32

Lab Sample ID: 400-256232-4
Matrix: Water

Prep Type	Batch Type	Batch Method	Run	Dil Factor	Initial Amount	Final Amount	Batch Number	Prepared or Analyzed	Analyst	Lab
Total/NA	Analysis	8260D		20	5 mL	5 mL	672480	05/23/24 11:18	WPD	EET PEN

Client Sample ID: MW-3R
Date Collected: 05/16/24 13:35
Date Received: 05/18/24 08:32

Lab Sample ID: 400-256232-5
Matrix: Water

Prep Type	Batch Type	Batch Method	Run	Dil Factor	Initial Amount	Final Amount	Batch Number	Prepared or Analyzed	Analyst	Lab
Total/NA	Analysis	8260D		1	5 mL	5 mL	672480	05/23/24 08:27	WPD	EET PEN

Client Sample ID: MW-4
Date Collected: 05/16/24 13:40
Date Received: 05/18/24 08:32

Lab Sample ID: 400-256232-6
Matrix: Water

Prep Type	Batch Type	Batch Method	Run	Dil Factor	Initial Amount	Final Amount	Batch Number	Prepared or Analyzed	Analyst	Lab
Total/NA	Analysis	8260D		1	5 mL	5 mL	672311	05/22/24 16:01	WPD	EET PEN

Client Sample ID: MW-5
Date Collected: 05/16/24 13:50
Date Received: 05/18/24 08:32

Lab Sample ID: 400-256232-7
Matrix: Water

Prep Type	Batch Type	Batch Method	Run	Dil Factor	Initial Amount	Final Amount	Batch Number	Prepared or Analyzed	Analyst	Lab
Total/NA	Analysis	8260D		1	5 mL	5 mL	672311	05/22/24 16:25	WPD	EET PEN

Eurofins Pensacola

Lab Chronicle

Client: Stantec Consulting Services, Inc.
 Project/Site: K27 LD072.00

Job ID: 400-256232-1

Client Sample ID: MW-6

Lab Sample ID: 400-256232-8

Date Collected: 05/16/24 13:55

Matrix: Water

Date Received: 05/18/24 08:32

Prep Type	Batch Type	Batch Method	Run	Dil Factor	Initial Amount	Final Amount	Batch Number	Prepared or Analyzed	Analyst	Lab
Total/NA	Analysis	8260D		1	5 mL	5 mL	672311	05/22/24 16:49	WPD	EET PEN

Client Sample ID: MW-7

Lab Sample ID: 400-256232-9

Date Collected: 05/16/24 14:00

Matrix: Water

Date Received: 05/18/24 08:32

Prep Type	Batch Type	Batch Method	Run	Dil Factor	Initial Amount	Final Amount	Batch Number	Prepared or Analyzed	Analyst	Lab
Total/NA	Analysis	8260D		1	5 mL	5 mL	672969	05/29/24 16:44	CAR	EET PEN

Client Sample ID: MW-8

Lab Sample ID: 400-256232-10

Date Collected: 05/16/24 14:07

Matrix: Water

Date Received: 05/18/24 08:32

Prep Type	Batch Type	Batch Method	Run	Dil Factor	Initial Amount	Final Amount	Batch Number	Prepared or Analyzed	Analyst	Lab
Total/NA	Analysis	8260D		1	5 mL	5 mL	672969	05/29/24 17:05	CAR	EET PEN

Client Sample ID: MW-9

Lab Sample ID: 400-256232-11

Date Collected: 05/16/24 14:15

Matrix: Water

Date Received: 05/18/24 08:32

Prep Type	Batch Type	Batch Method	Run	Dil Factor	Initial Amount	Final Amount	Batch Number	Prepared or Analyzed	Analyst	Lab
Total/NA	Analysis	8260D		1	5 mL	5 mL	672969	05/29/24 17:26	CAR	EET PEN

Client Sample ID: MW-10

Lab Sample ID: 400-256232-12

Date Collected: 05/16/24 14:20

Matrix: Water

Date Received: 05/18/24 08:32

Prep Type	Batch Type	Batch Method	Run	Dil Factor	Initial Amount	Final Amount	Batch Number	Prepared or Analyzed	Analyst	Lab
Total/NA	Analysis	8260D		1	5 mL	5 mL	672969	05/29/24 17:46	CAR	EET PEN

Client Sample ID: MW-12

Lab Sample ID: 400-256232-13

Date Collected: 05/16/24 14:25

Matrix: Water

Date Received: 05/18/24 08:32

Prep Type	Batch Type	Batch Method	Run	Dil Factor	Initial Amount	Final Amount	Batch Number	Prepared or Analyzed	Analyst	Lab
Total/NA	Analysis	8260D		1	5 mL	5 mL	672969	05/29/24 18:07	CAR	EET PEN

Client Sample ID: MW-13

Lab Sample ID: 400-256232-14

Date Collected: 05/16/24 14:32

Matrix: Water

Date Received: 05/18/24 08:32

Prep Type	Batch Type	Batch Method	Run	Dil Factor	Initial Amount	Final Amount	Batch Number	Prepared or Analyzed	Analyst	Lab
Total/NA	Analysis	8260D		1	5 mL	5 mL	672969	05/29/24 18:28	CAR	EET PEN

Eurofins Pensacola

Lab Chronicle

Client: Stantec Consulting Services, Inc.
Project/Site: K27 LD072.00

Job ID: 400-256232-1

Client Sample ID: MW-14

Lab Sample ID: 400-256232-15

Date Collected: 05/16/24 14:40

Matrix: Water

Date Received: 05/18/24 08:32

Prep Type	Batch Type	Batch Method	Run	Dil Factor	Initial Amount	Final Amount	Batch Number	Prepared or Analyzed	Analyst	Lab
Total/NA	Analysis	8260D		1	5 mL	5 mL	672969	05/29/24 18:51	CAR	EET PEN

Client Sample ID: Method Blank

Lab Sample ID: MB 400-672311/4

Date Collected: N/A

Matrix: Water

Date Received: N/A

Prep Type	Batch Type	Batch Method	Run	Dil Factor	Initial Amount	Final Amount	Batch Number	Prepared or Analyzed	Analyst	Lab
Total/NA	Analysis	8260D		1	5 mL	5 mL	672311	05/22/24 08:17	WPD	EET PEN

Client Sample ID: Method Blank

Lab Sample ID: MB 400-672480/4

Date Collected: N/A

Matrix: Water

Date Received: N/A

Prep Type	Batch Type	Batch Method	Run	Dil Factor	Initial Amount	Final Amount	Batch Number	Prepared or Analyzed	Analyst	Lab
Total/NA	Analysis	8260D		1	5 mL	5 mL	672480	05/23/24 08:03	WPD	EET PEN

Client Sample ID: Method Blank

Lab Sample ID: MB 400-672969/5

Date Collected: N/A

Matrix: Water

Date Received: N/A

Prep Type	Batch Type	Batch Method	Run	Dil Factor	Initial Amount	Final Amount	Batch Number	Prepared or Analyzed	Analyst	Lab
Total/NA	Analysis	8260D		1	5 mL	5 mL	672969	05/29/24 11:53	CAR	EET PEN

Client Sample ID: Lab Control Sample

Lab Sample ID: LCS 400-672311/1002

Date Collected: N/A

Matrix: Water

Date Received: N/A

Prep Type	Batch Type	Batch Method	Run	Dil Factor	Initial Amount	Final Amount	Batch Number	Prepared or Analyzed	Analyst	Lab
Total/NA	Analysis	8260D		1	5 mL	5 mL	672311	05/22/24 07:19	WPD	EET PEN

Client Sample ID: Lab Control Sample

Lab Sample ID: LCS 400-672480/1002

Date Collected: N/A

Matrix: Water

Date Received: N/A

Prep Type	Batch Type	Batch Method	Run	Dil Factor	Initial Amount	Final Amount	Batch Number	Prepared or Analyzed	Analyst	Lab
Total/NA	Analysis	8260D		1	5 mL	5 mL	672480	05/23/24 07:07	WPD	EET PEN

Client Sample ID: Lab Control Sample

Lab Sample ID: LCS 400-672969/1002

Date Collected: N/A

Matrix: Water

Date Received: N/A

Prep Type	Batch Type	Batch Method	Run	Dil Factor	Initial Amount	Final Amount	Batch Number	Prepared or Analyzed	Analyst	Lab
Total/NA	Analysis	8260D		1	5 mL	5 mL	672969	05/29/24 10:12	CAR	EET PEN

Eurofins Pensacola

Lab Chronicle

Client: Stantec Consulting Services, Inc.
Project/Site: K27 LD072.00

Job ID: 400-256232-1

Client Sample ID: MW-3R
Date Collected: 05/16/24 13:35
Date Received: 05/18/24 08:32

Lab Sample ID: 400-256232-5 MS
Matrix: Water

Prep Type	Batch Type	Batch Method	Run	Dil Factor	Initial Amount	Final Amount	Batch Number	Prepared or Analyzed	Analyst	Lab
Total/NA	Analysis	8260D		1	5 mL	5 mL	672480	05/23/24 11:43	WPD	EET PEN

Client Sample ID: MW-3R
Date Collected: 05/16/24 13:35
Date Received: 05/18/24 08:32

Lab Sample ID: 400-256232-5 MSD
Matrix: Water

Prep Type	Batch Type	Batch Method	Run	Dil Factor	Initial Amount	Final Amount	Batch Number	Prepared or Analyzed	Analyst	Lab
Total/NA	Analysis	8260D		1	5 mL	5 mL	672480	05/23/24 12:07	WPD	EET PEN

Laboratory References:

EET PEN = Eurofins Pensacola, 3355 McLemore Drive, Pensacola, FL 32514, TEL (850)474-1001

- 1
- 2
- 3
- 4
- 5
- 6
- 7
- 8
- 9
- 10
- 11
- 12
- 13
- 14

QC Association Summary

Client: Stantec Consulting Services, Inc.
Project/Site: K27 LD072.00

Job ID: 400-256232-1

GC/MS VOA

Analysis Batch: 672311

Lab Sample ID	Client Sample ID	Prep Type	Matrix	Method	Prep Batch
400-256232-6	MW-4	Total/NA	Water	8260D	
400-256232-7	MW-5	Total/NA	Water	8260D	
400-256232-8	MW-6	Total/NA	Water	8260D	
MB 400-672311/4	Method Blank	Total/NA	Water	8260D	
LCS 400-672311/1002	Lab Control Sample	Total/NA	Water	8260D	

Analysis Batch: 672480

Lab Sample ID	Client Sample ID	Prep Type	Matrix	Method	Prep Batch
400-256232-4	MW-2R	Total/NA	Water	8260D	
400-256232-5	MW-3R	Total/NA	Water	8260D	
MB 400-672480/4	Method Blank	Total/NA	Water	8260D	
LCS 400-672480/1002	Lab Control Sample	Total/NA	Water	8260D	
400-256232-5 MS	MW-3R	Total/NA	Water	8260D	
400-256232-5 MSD	MW-3R	Total/NA	Water	8260D	

Analysis Batch: 672969

Lab Sample ID	Client Sample ID	Prep Type	Matrix	Method	Prep Batch
400-256232-1	TB-01	Total/NA	Water	8260D	
400-256232-2	DUP-01	Total/NA	Water	8260D	
400-256232-3	MW-1	Total/NA	Water	8260D	
400-256232-9	MW-7	Total/NA	Water	8260D	
400-256232-10	MW-8	Total/NA	Water	8260D	
400-256232-11	MW-9	Total/NA	Water	8260D	
400-256232-12	MW-10	Total/NA	Water	8260D	
400-256232-13	MW-12	Total/NA	Water	8260D	
400-256232-14	MW-13	Total/NA	Water	8260D	
400-256232-15	MW-14	Total/NA	Water	8260D	
MB 400-672969/5	Method Blank	Total/NA	Water	8260D	
LCS 400-672969/1002	Lab Control Sample	Total/NA	Water	8260D	

QC Sample Results

Client: Stantec Consulting Services, Inc.
Project/Site: K27 LD072.00

Job ID: 400-256232-1

Method: 8260D - Volatile Organic Compounds by GC/MS

Lab Sample ID: MB 400-672311/4
Matrix: Water
Analysis Batch: 672311

Client Sample ID: Method Blank
Prep Type: Total/NA

Analyte	MB Result	MB Qualifier	RL	MDL	Unit	D	Prepared	Analyzed	Dil Fac
Benzene	<1.0		1.0		ug/L			05/22/24 08:17	1
Ethylbenzene	<1.0		1.0		ug/L			05/22/24 08:17	1
Toluene	<1.0		1.0		ug/L			05/22/24 08:17	1
Xylenes, Total	<10		10		ug/L			05/22/24 08:17	1

Surrogate	MB %Recovery	MB Qualifier	Limits	Prepared	Analyzed	Dil Fac
4-Bromofluorobenzene	109		72 - 130		05/22/24 08:17	1
Dibromofluoromethane	100		75 - 126		05/22/24 08:17	1
Toluene-d8 (Surr)	100		64 - 132		05/22/24 08:17	1

Lab Sample ID: LCS 400-672311/1002
Matrix: Water
Analysis Batch: 672311

Client Sample ID: Lab Control Sample
Prep Type: Total/NA

Analyte	Spike Added	LCS Result	LCS Qualifier	Unit	D	%Rec	%Rec Limits
Benzene	50.0	40.7		ug/L		81	70 - 130
m-Xylene & p-Xylene	50.0	46.7		ug/L		93	70 - 130
o-Xylene	50.0	46.3		ug/L		93	70 - 130
Ethylbenzene	50.0	45.5		ug/L		91	70 - 130
Toluene	50.0	42.6		ug/L		85	70 - 130

Surrogate	LCS %Recovery	LCS Qualifier	Limits
4-Bromofluorobenzene	106		72 - 130
Dibromofluoromethane	100		75 - 126
Toluene-d8 (Surr)	103		64 - 132

Lab Sample ID: MB 400-672480/4
Matrix: Water
Analysis Batch: 672480

Client Sample ID: Method Blank
Prep Type: Total/NA

Analyte	MB Result	MB Qualifier	RL	MDL	Unit	D	Prepared	Analyzed	Dil Fac
Benzene	<1.0		1.0		ug/L			05/23/24 08:03	1
Ethylbenzene	<1.0		1.0		ug/L			05/23/24 08:03	1
Toluene	<1.0		1.0		ug/L			05/23/24 08:03	1
Xylenes, Total	<10		10		ug/L			05/23/24 08:03	1

Surrogate	MB %Recovery	MB Qualifier	Limits	Prepared	Analyzed	Dil Fac
4-Bromofluorobenzene	110		72 - 130		05/23/24 08:03	1
Dibromofluoromethane	98		75 - 126		05/23/24 08:03	1
Toluene-d8 (Surr)	103		64 - 132		05/23/24 08:03	1

Lab Sample ID: LCS 400-672480/1002
Matrix: Water
Analysis Batch: 672480

Client Sample ID: Lab Control Sample
Prep Type: Total/NA

Analyte	Spike Added	LCS Result	LCS Qualifier	Unit	D	%Rec	%Rec Limits
Benzene	50.0	48.4		ug/L		97	70 - 130
m-Xylene & p-Xylene	50.0	51.7		ug/L		103	70 - 130

Eurofins Pensacola

QC Sample Results

Client: Stantec Consulting Services, Inc.
Project/Site: K27 LD072.00

Job ID: 400-256232-1

Method: 8260D - Volatile Organic Compounds by GC/MS (Continued)

Lab Sample ID: LCS 400-672480/1002
Matrix: Water
Analysis Batch: 672480

Client Sample ID: Lab Control Sample
Prep Type: Total/NA

Analyte	Spike Added	LCS Result	LCS Qualifier	Unit	D	%Rec	%Rec Limits
o-Xylene	50.0	51.1		ug/L		102	70 - 130
Ethylbenzene	50.0	50.1		ug/L		100	70 - 130
Toluene	50.0	48.9		ug/L		98	70 - 130

Surrogate	LCS %Recovery	LCS Qualifier	Limits
4-Bromofluorobenzene	106		72 - 130
Dibromofluoromethane	97		75 - 126
Toluene-d8 (Surr)	103		64 - 132

Lab Sample ID: 400-256232-5 MS
Matrix: Water
Analysis Batch: 672480

Client Sample ID: MW-3R
Prep Type: Total/NA

Analyte	Sample Result	Sample Qualifier	Spike Added	MS Result	MS Qualifier	Unit	D	%Rec	%Rec Limits
Benzene	<1.0		50.0	33.1		ug/L		66	56 - 142
m-Xylene & p-Xylene	<5.0		50.0	32.1		ug/L		64	57 - 130
o-Xylene	<5.0		50.0	32.2		ug/L		64	61 - 130
Ethylbenzene	<1.0	F2	50.0	31.4		ug/L		63	58 - 131
Toluene	<1.0	F1	50.0	32.0	F1	ug/L		64	65 - 130

Surrogate	MS %Recovery	MS Qualifier	Limits
4-Bromofluorobenzene	105		72 - 130
Dibromofluoromethane	101		75 - 126
Toluene-d8 (Surr)	102		64 - 132

Lab Sample ID: 400-256232-5 MSD
Matrix: Water
Analysis Batch: 672480

Client Sample ID: MW-3R
Prep Type: Total/NA

Analyte	Sample Result	Sample Qualifier	Spike Added	MSD Result	MSD Qualifier	Unit	D	%Rec	%Rec Limits	RPD	RPD Limit
Benzene	<1.0		50.0	39.8		ug/L		80	56 - 142	18	30
m-Xylene & p-Xylene	<5.0		50.0	43.7		ug/L		87	57 - 130	30	30
o-Xylene	<5.0		50.0	43.7		ug/L		87	61 - 130	30	30
Ethylbenzene	<1.0	F2	50.0	43.1	F2	ug/L		86	58 - 131	31	30
Toluene	<1.0	F1	50.0	40.6		ug/L		81	65 - 130	24	30

Surrogate	MSD %Recovery	MSD Qualifier	Limits
4-Bromofluorobenzene	106		72 - 130
Dibromofluoromethane	98		75 - 126
Toluene-d8 (Surr)	102		64 - 132

Lab Sample ID: MB 400-672969/5
Matrix: Water
Analysis Batch: 672969

Client Sample ID: Method Blank
Prep Type: Total/NA

Analyte	MB Result	MB Qualifier	RL	MDL	Unit	D	Prepared	Analyzed	Dil Fac
Benzene	<1.0		1.0		ug/L			05/29/24 11:53	1
Ethylbenzene	<1.0		1.0		ug/L			05/29/24 11:53	1

Eurofins Pensacola

QC Sample Results

Client: Stantec Consulting Services, Inc.
 Project/Site: K27 LD072.00

Job ID: 400-256232-1

Method: 8260D - Volatile Organic Compounds by GC/MS (Continued)

Lab Sample ID: MB 400-672969/5
Matrix: Water
Analysis Batch: 672969

Client Sample ID: Method Blank
Prep Type: Total/NA

Analyte	MB Result	MB Qualifier	RL	MDL	Unit	D	Prepared	Analyzed	Dil Fac
Toluene	<1.0		1.0		ug/L			05/29/24 11:53	1
Xylenes, Total	<10		10		ug/L			05/29/24 11:53	1

Surrogate	MB %Recovery	MB Qualifier	Limits	Prepared	Analyzed	Dil Fac
4-Bromofluorobenzene	97		72 - 130		05/29/24 11:53	1
Dibromofluoromethane	105		75 - 126		05/29/24 11:53	1
Toluene-d8 (Surr)	101		64 - 132		05/29/24 11:53	1

Lab Sample ID: LCS 400-672969/1002
Matrix: Water
Analysis Batch: 672969

Client Sample ID: Lab Control Sample
Prep Type: Total/NA

Analyte	Spike Added	LCS Result	LCS Qualifier	Unit	D	%Rec	%Rec Limits
Benzene	50.0	49.7		ug/L		99	70 - 130
m-Xylene & p-Xylene	50.0	48.7		ug/L		97	70 - 130
o-Xylene	50.0	49.3		ug/L		99	70 - 130
Ethylbenzene	50.0	48.2		ug/L		96	70 - 130
Toluene	50.0	48.9		ug/L		98	70 - 130

Surrogate	LCS %Recovery	LCS Qualifier	Limits
4-Bromofluorobenzene	98		72 - 130
Dibromofluoromethane	108		75 - 126
Toluene-d8 (Surr)	98		64 - 132

Eurofins Pensacola

3355 McLemore Drive
Pensacola, FL 32514
Phone: 850-474-1001 Fax: 850-478-2671

Chain of Custody Record



Client Information		Sampler: <i>Emma Brady</i>	Lab PM: Whitmire, Cheyenne R	Carrier Tracking No(s): 400-256232 COC	COC No: 400-130513-41364.1																																																																																																																										
Client Contact: Joe Wiley		Phone: <i>575-253-0530</i>	E-Mail: Cheyenne.Whitmire@et.eurofinsus.com	State of Origin:	Page: Page 1 of 2																																																																																																																										
Company: El Paso Energy Corporation		PWSID:	Analysis Requested																																																																																																																												
Address: 1001 Louisiana Street Room S1905B		Due Date Requested: <i>STP</i>	<table border="1"> <tr> <td colspan="2">Field Filtered Sample (Yes or No)</td> <td colspan="2">Perform MS/MSD (Yes or No)</td> <td rowspan="5">Total Number of Containers</td> </tr> <tr> <td>8260D - BTEX - 8260</td> <td>8260D - BTEX - 8260</td> <td colspan="2" rowspan="5" style="text-align: center; vertical-align: middle;"><i>ECB</i></td> </tr> <tr> <td></td> <td></td> </tr> <tr> <td></td> <td></td> </tr> <tr> <td></td> <td></td> </tr> <tr> <td></td> <td></td> </tr> </table>			Field Filtered Sample (Yes or No)		Perform MS/MSD (Yes or No)		Total Number of Containers	8260D - BTEX - 8260	8260D - BTEX - 8260	<i>ECB</i>																																																																																																																		
Field Filtered Sample (Yes or No)		Perform MS/MSD (Yes or No)				Total Number of Containers																																																																																																																									
8260D - BTEX - 8260	8260D - BTEX - 8260	<i>ECB</i>																																																																																																																													
City: Houston		TAT Requested (days): <i>STP</i>	Preservation Codes: A - HCL N - None																																																																																																																												
State, Zip: TX, 77002		Compliance Project: <input type="checkbox"/> Yes <input type="checkbox"/> No	Other:																																																																																																																												
Phone:		PO #: WD1040029	Special Instructions/Note:																																																																																																																												
Email: joe.wiley@kindermorgan.com		WO #: K27_ERG_ARF_5-1-2024	<table border="1"> <thead> <tr> <th>Sample Identification</th> <th>Sample Date</th> <th>Sample Time</th> <th>Sample Type (C=comp, G=grab)</th> <th>Matrix (W=water, S=solid, O=waste/oil, BT=Tissue, A=Air)</th> <th>Field Filtered Sample (Yes or No)</th> <th>Perform MS/MSD (Yes or No)</th> <th>8260D - BTEX - 8260</th> <th>8260D - BTEX - 8260</th> <th>Total Number of Containers</th> <th>Special Instructions/Note:</th> </tr> </thead> <tbody> <tr> <td>TR-01</td> <td><i>5/15/2024</i></td> <td><i>1230</i></td> <td><i>G</i></td> <td>Water</td> <td><i>M</i></td> <td><i>N</i></td> <td></td> <td></td> <td><i>2</i></td> <td rowspan="10" style="text-align: center; vertical-align: middle;"><i>STP</i></td> </tr> <tr> <td>Dup-01</td> <td><i>5/15/2024</i></td> <td><i>-</i></td> <td><i>G</i></td> <td>Water</td> <td><i>M</i></td> <td><i>N</i></td> <td></td> <td></td> <td><i>2</i></td> </tr> <tr> <td>MW-1</td> <td><i>5/15/2024</i></td> <td><i>1320</i></td> <td><i>G</i></td> <td>Water</td> <td><i>M</i></td> <td><i>N</i></td> <td></td> <td></td> <td><i>2</i></td> </tr> <tr> <td>MW-2R</td> <td><i>5/16/2024</i></td> <td><i>1330</i></td> <td><i>G</i></td> <td>Water</td> <td><i>M</i></td> <td><i>N</i></td> <td><i>X</i></td> <td></td> <td><i>2</i></td> </tr> <tr> <td>MW-3R</td> <td><i>5/16/2024</i></td> <td><i>1335</i></td> <td><i>G</i></td> <td>Water</td> <td><i>M</i></td> <td><i>N</i></td> <td><i>X</i></td> <td></td> <td><i>2</i></td> </tr> <tr> <td>MW-4</td> <td><i>5/16/2024</i></td> <td><i>1340</i></td> <td><i>G</i></td> <td>Water</td> <td><i>M</i></td> <td><i>N</i></td> <td><i>X</i></td> <td></td> <td><i>2</i></td> </tr> <tr> <td>MW-5</td> <td><i>5/16/2024</i></td> <td><i>1350</i></td> <td><i>G</i></td> <td>Water</td> <td><i>M</i></td> <td><i>N</i></td> <td><i>X</i></td> <td></td> <td><i>2</i></td> </tr> <tr> <td>MW-6</td> <td><i>5/16/2024</i></td> <td><i>1355</i></td> <td><i>G</i></td> <td>Water</td> <td><i>M</i></td> <td><i>N</i></td> <td><i>X</i></td> <td></td> <td><i>1</i></td> </tr> <tr> <td>MW-7</td> <td><i>5/16/2024</i></td> <td><i>1400</i></td> <td><i>G</i></td> <td>Water</td> <td><i>M</i></td> <td><i>N</i></td> <td><i>X</i></td> <td></td> <td><i>2</i></td> </tr> <tr> <td>MW-8</td> <td><i>5/16/2024</i></td> <td><i>1407</i></td> <td><i>G</i></td> <td>Water</td> <td><i>M</i></td> <td><i>N</i></td> <td><i>X</i></td> <td></td> <td><i>2</i></td> </tr> <tr> <td>MW-4</td> <td><i>5/16/2024</i></td> <td><i>1415</i></td> <td><i>G</i></td> <td>Water</td> <td><i>M</i></td> <td><i>N</i></td> <td><i>X</i></td> <td></td> <td><i>2</i></td> </tr> </tbody> </table>			Sample Identification	Sample Date	Sample Time	Sample Type (C=comp, G=grab)	Matrix (W=water, S=solid, O=waste/oil, BT=Tissue, A=Air)	Field Filtered Sample (Yes or No)	Perform MS/MSD (Yes or No)	8260D - BTEX - 8260	8260D - BTEX - 8260	Total Number of Containers	Special Instructions/Note:	TR-01	<i>5/15/2024</i>	<i>1230</i>	<i>G</i>	Water	<i>M</i>	<i>N</i>			<i>2</i>	<i>STP</i>	Dup-01	<i>5/15/2024</i>	<i>-</i>	<i>G</i>	Water	<i>M</i>	<i>N</i>			<i>2</i>	MW-1	<i>5/15/2024</i>	<i>1320</i>	<i>G</i>	Water	<i>M</i>	<i>N</i>			<i>2</i>	MW-2R	<i>5/16/2024</i>	<i>1330</i>	<i>G</i>	Water	<i>M</i>	<i>N</i>	<i>X</i>		<i>2</i>	MW-3R	<i>5/16/2024</i>	<i>1335</i>	<i>G</i>	Water	<i>M</i>	<i>N</i>	<i>X</i>		<i>2</i>	MW-4	<i>5/16/2024</i>	<i>1340</i>	<i>G</i>	Water	<i>M</i>	<i>N</i>	<i>X</i>		<i>2</i>	MW-5	<i>5/16/2024</i>	<i>1350</i>	<i>G</i>	Water	<i>M</i>	<i>N</i>	<i>X</i>		<i>2</i>	MW-6	<i>5/16/2024</i>	<i>1355</i>	<i>G</i>	Water	<i>M</i>	<i>N</i>	<i>X</i>		<i>1</i>	MW-7	<i>5/16/2024</i>	<i>1400</i>	<i>G</i>	Water	<i>M</i>	<i>N</i>	<i>X</i>		<i>2</i>	MW-8	<i>5/16/2024</i>	<i>1407</i>	<i>G</i>	Water	<i>M</i>	<i>N</i>	<i>X</i>		<i>2</i>	MW-4	<i>5/16/2024</i>	<i>1415</i>	<i>G</i>	Water	<i>M</i>	<i>N</i>	<i>X</i>		<i>2</i>
Sample Identification	Sample Date	Sample Time				Sample Type (C=comp, G=grab)	Matrix (W=water, S=solid, O=waste/oil, BT=Tissue, A=Air)	Field Filtered Sample (Yes or No)	Perform MS/MSD (Yes or No)	8260D - BTEX - 8260	8260D - BTEX - 8260	Total Number of Containers	Special Instructions/Note:																																																																																																																		
TR-01	<i>5/15/2024</i>	<i>1230</i>				<i>G</i>	Water	<i>M</i>	<i>N</i>			<i>2</i>	<i>STP</i>																																																																																																																		
Dup-01	<i>5/15/2024</i>	<i>-</i>				<i>G</i>	Water	<i>M</i>	<i>N</i>			<i>2</i>																																																																																																																			
MW-1	<i>5/15/2024</i>	<i>1320</i>				<i>G</i>	Water	<i>M</i>	<i>N</i>			<i>2</i>																																																																																																																			
MW-2R	<i>5/16/2024</i>	<i>1330</i>				<i>G</i>	Water	<i>M</i>	<i>N</i>	<i>X</i>		<i>2</i>																																																																																																																			
MW-3R	<i>5/16/2024</i>	<i>1335</i>				<i>G</i>	Water	<i>M</i>	<i>N</i>	<i>X</i>		<i>2</i>																																																																																																																			
MW-4	<i>5/16/2024</i>	<i>1340</i>				<i>G</i>	Water	<i>M</i>	<i>N</i>	<i>X</i>		<i>2</i>																																																																																																																			
MW-5	<i>5/16/2024</i>	<i>1350</i>				<i>G</i>	Water	<i>M</i>	<i>N</i>	<i>X</i>		<i>2</i>																																																																																																																			
MW-6	<i>5/16/2024</i>	<i>1355</i>				<i>G</i>	Water	<i>M</i>	<i>N</i>	<i>X</i>		<i>1</i>																																																																																																																			
MW-7	<i>5/16/2024</i>	<i>1400</i>	<i>G</i>	Water	<i>M</i>	<i>N</i>	<i>X</i>		<i>2</i>																																																																																																																						
MW-8	<i>5/16/2024</i>	<i>1407</i>	<i>G</i>	Water	<i>M</i>	<i>N</i>	<i>X</i>		<i>2</i>																																																																																																																						
MW-4	<i>5/16/2024</i>	<i>1415</i>	<i>G</i>	Water	<i>M</i>	<i>N</i>	<i>X</i>		<i>2</i>																																																																																																																						
Project Name: K27 LD072.00		Project #: 40015823	Job #:																																																																																																																												
Site:		SSOW#:	Job #:																																																																																																																												



Eurofins Pensacola

3355 McLemore Drive
Pensacola, FL 32514
Phone: 850-474-1001 Fax: 850-478-2671

Chain of Custody Record

Client Information		Sampler: <i>Emma Brady</i>	Lab PM: Whitmire, Cheyenne R	Carrier Tracking No(s):	COC No: 400-130513-41364.2									
Client Contact: Joe Wiley		Phone: <i>850-253-0830</i>	E-Mail: Cheyenne.Whitmire@et.eurofinsus.com	State of Origin:	Page: Page 2 of 2									
Company: El Paso Energy Corporation		PWSID:	Analysis Requested		Job #:									
Address: 1001 Louisiana Street Room S1905B		Due Date Requested: <i>STD</i>	<i>ERP</i>		Preservation Codes: A - HCL N - None									
City: Houston		TAT Requested (days): <i>STD</i>			<table border="1"> <tr><td>Field Filtered Sample (Yes or No)</td><td></td></tr> <tr><td>Perform MS/MSD (Yes or No)</td><td></td></tr> <tr><td>8260D - BTEX - 8260</td><td></td></tr> <tr><td>8260D - BTEX - 00826</td><td></td></tr> </table>	Field Filtered Sample (Yes or No)		Perform MS/MSD (Yes or No)		8260D - BTEX - 8260		8260D - BTEX - 00826		Other:
Field Filtered Sample (Yes or No)														
Perform MS/MSD (Yes or No)														
8260D - BTEX - 8260														
8260D - BTEX - 00826														
State, Zip: TX, 77002		Compliance Project: <input type="checkbox"/> Yes <input type="checkbox"/> No	Special Instructions/Note:											
Phone:		PO #: WD1040029												
Email: joe.wiley@kindermorgan.com		WO #: K27_ERG_ARF_5-1-2024												
Project Name: K27 LD072.00		Project #: 40015823												
Site:		SSOW#:												
Sample Identification	Sample Date	Sample Time	Sample Type (C=comp, G=grab)	Matrix (W=water, S=solid, O=waste/oil, BT=Tissue, A=Air)	Field Filtered Sample (Yes or No)	Perform MS/MSD (Yes or No)	8260D - BTEX - 8260	8260D - BTEX - 00826	Total Number of Containers	Special Instructions/Note:				
			Preservation Code:				A	N						
<i>MW-10</i>	<i>5/16/2024</i>	<i>1420</i>	<i>G</i>	Water	<i>XX</i>	<i>XX</i>								
<i>MW-12</i>	<i>5/15/2024</i>	<i>1425</i>	<i>G</i>	Water	<i>XX</i>	<i>XX</i>								
<i>MW-13</i>	<i>5/16/2024</i>	<i>1432</i>	<i>G</i>	Water	<i>XX</i>	<i>XX</i>								
<i>MW-14</i>	<i>5/16/2024</i>	<i>1440</i>	<i>G</i>	Water	<i>XX</i>	<i>XX</i>								
				Water										
				Water										
				Water										
				Water										
				Water										
				Water										
				Water										
Possible Hazard Identification					Sample Disposal (A fee may be assessed if samples are retained longer than 1 month)									
<input type="checkbox"/> Non-Hazard <input type="checkbox"/> Flammable <input type="checkbox"/> Skin Irritant <input type="checkbox"/> Poison B <input type="checkbox"/> Unknown <input type="checkbox"/> Radiological					<input type="checkbox"/> Return To Client <input type="checkbox"/> Disposal By Lab <input type="checkbox"/> Archive For _____ Months									
Deliverable Requested: I, II, III, IV, Other (specify)					Special Instructions/QC Requirements:									
Empty Kit Relinquished by:			Date:	Time:	Method of Shipment:									
Relinquished by: <i>JM</i>			Date/Time: <i>5/17/2024 1400</i>	Company: <i>STN</i>	Received by: <i>JK</i>			Date/Time: <i>5/15/24 0832</i>	Company:					
Relinquished by:			Date/Time:	Company:	Received by:			Date/Time:	Company:					
Relinquished by:			Date/Time:	Company:	Received by:			Date/Time:	Company:					
Custody Seals Intact: <input type="checkbox"/> Yes <input type="checkbox"/> No		Custody Seal No.:			Cooler Temperature(s) °C and Other Remarks: <i>0.90C/24</i>									

Login Sample Receipt Checklist

Client: Stantec Consulting Services, Inc.

Job Number: 400-256232-1

Login Number: 256232

List Source: Eurofins Pensacola

List Number: 1

Creator: Perez, Trina M

Question	Answer	Comment
Radioactivity wasn't checked or is </= background as measured by a survey meter.	N/A	
The cooler's custody seal, if present, is intact.	True	
Sample custody seals, if present, are intact.	N/A	
The cooler or samples do not appear to have been compromised or tampered with.	True	
Samples were received on ice.	True	
Cooler Temperature is acceptable.	True	
Cooler Temperature is recorded.	True	0.9°C IR-11
COC is present.	True	
COC is filled out in ink and legible.	True	
COC is filled out with all pertinent information.	True	
Is the Field Sampler's name present on COC?	True	
There are no discrepancies between the containers received and the COC.	True	
Samples are received within Holding Time (excluding tests with immediate HTs)	True	
Sample containers have legible labels.	True	
Containers are not broken or leaking.	True	
Sample collection date/times are provided.	True	
Appropriate sample containers are used.	True	
Sample bottles are completely filled.	True	
Sample Preservation Verified.	N/A	
There is sufficient vol. for all requested analyses, incl. any requested MS/MSDs	True	
Containers requiring zero headspace have no headspace or bubble is <6mm (1/4").	True	
Multiphasic samples are not present.	True	
Samples do not require splitting or compositing.	True	
Residual Chlorine Checked.	N/A	

Accreditation/Certification Summary

Client: Stantec Consulting Services, Inc.
Project/Site: K27 LD072.00

Job ID: 400-256232-1

Laboratory: Eurofins Pensacola

All accreditations/certifications held by this laboratory are listed. Not all accreditations/certifications are applicable to this report.

Authority	Program	Identification Number	Expiration Date
Alabama	State	40150	06-30-24
ANAB	ISO/IEC 17025	L2471	02-22-26
Arkansas DEQ	State	88-00689	08-01-24
California	State	2510	06-30-24
Florida	NELAP	E81010	06-30-24
Georgia	State	E81010(FL)	06-30-24
Illinois	NELAP	200041	10-09-24
Kansas	NELAP	E-10253	10-31-24
Kentucky (UST)	State	53	06-30-24
Louisiana (All)	NELAP	30976	06-30-24
Louisiana (DW)	State	LA017	12-31-24
North Carolina (WW/SW)	State	314	12-31-24
Oklahoma	NELAP	9810	08-31-24
Pennsylvania	NELAP	68-00467	01-31-25
South Carolina	State	96026	06-30-24
Tennessee	State	TN02907	06-30-24
Texas	NELAP	T104704286	09-30-24
US Fish & Wildlife	US Federal Programs	A22340	06-30-24
USDA	US Federal Programs	P330-21-00056	01-09-26
USDA	US Federal Programs	FLGNV23001	01-08-26
Virginia	NELAP	460166	06-14-24
West Virginia DEP	State	136	03-31-25



Environment Testing

- 1
- 2
- 3
- 4
- 5
- 6
- 7
- 8
- 9
- 10
- 11
- 12
- 13
- 14

ANALYTICAL REPORT

PREPARED FOR

Attn: Steve Varsa
 Stantec Consulting Services, Inc.
 11311 Aurora Avenue
 Des Moines, Iowa 50322-7904

Generated 12/5/2024 1:05:46 PM

JOB DESCRIPTION

K27 LD072.00

JOB NUMBER

400-266187-1

Eurofins Pensacola
 3355 McLemore Drive
 Pensacola FL 32514



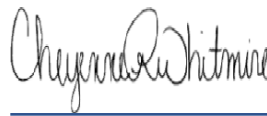
Eurofins Pensacola

Job Notes

This report may not be reproduced except in full, and with written approval from the laboratory. The results relate only to the samples tested. For questions please contact the Project Manager at the e-mail address or telephone number listed on this page.

The test results in this report relate only to the samples as received by the laboratory and will meet all requirements of the methodology, with any exceptions noted. This report shall not be reproduced except in full, without the express written approval of the laboratory. All questions should be directed to the Eurofins Environment Testing Southeast, LLC Project Manager.

Authorization



Generated
12/5/2024 1:05:46 PM

Authorized for release by
Cheyenne Whitmire, Senior Project Manager
Cheyenne.Whitmire@et.eurofinsus.com
(850)471-6222

- 1
- 2
- 3
- 4
- 5
- 6
- 7
- 8
- 9
- 10
- 11
- 12
- 13
- 14

Client: Stantec Consulting Services, Inc.
Project/Site: K27 LD072.00

Laboratory Job ID: 400-266187-1

- 1
- 2
- 3
- 4
- 5
- 6
- 7
- 8
- 9
- 10
- 11
- 12
- 13
- 14

Table of Contents

Cover Page	1
Table of Contents	3
Case Narrative	4
Detection Summary	5
Method Summary	6
Sample Summary	7
Client Sample Results	8
Definitions	19
Chronicle	20
QC Association	23
QC Sample Results	24
Chain of Custody	26
Receipt Checklists	27
Certification Summary	28

Case Narrative

Client: Stantec Consulting Services, Inc.
Project: K27 LD072.00

Job ID: 400-266187-1

Job ID: 400-266187-1

Eurofins Pensacola

Job Narrative 400-266187-1

Receipt

The samples were received on 11/16/2024 9:27 AM. Unless otherwise noted below, the samples arrived in good condition, and where required, properly preserved and on ice. The temperature of the cooler at receipt was 0.0° C.

GC/MS VOA

Method 8260D: Surrogate recovery for the following sample was outside control limits: MW-9 (400-266187-11). Evidence of matrix interference is present; therefore, re-extraction and/or re-analysis was not performed.

Method 8260D: The following sample was diluted to bring the concentration of target analytes within the calibration range: DUP-01 (400-266187-2). Elevated reporting limits (RLs) are provided.

No additional analytical or quality issues were noted, other than those described above or in the Definitions/Glossary page.

- 1
- 2
- 3
- 4
- 5
- 6
- 7
- 8
- 9
- 10
- 11
- 12
- 13
- 14

Eurofins Pensacola

Detection Summary

Client: Stantec Consulting Services, Inc.
Project/Site: K27 LD072.00

Job ID: 400-266187-1

Client Sample ID: TB-01

Lab Sample ID: 400-266187-1

No Detections.

Client Sample ID: DUP-01

Lab Sample ID: 400-266187-2

Analyte	Result	Qualifier	RL	MDL	Unit	Dil Fac	D	Method	Prep Type
Ethylbenzene	7.8		1.0		ug/L	1		8260D	Total/NA
Toluene	170		1.0		ug/L	1		8260D	Total/NA
Xylenes, Total	93		10		ug/L	1		8260D	Total/NA
Benzene - DL	280		2.0		ug/L	2		8260D	Total/NA

Client Sample ID: MW-1

Lab Sample ID: 400-266187-3

Analyte	Result	Qualifier	RL	MDL	Unit	Dil Fac	D	Method	Prep Type
Benzene	260		1.0		ug/L	1		8260D	Total/NA
Ethylbenzene	6.4		1.0		ug/L	1		8260D	Total/NA
Toluene	150		1.0		ug/L	1		8260D	Total/NA
Xylenes, Total	76		10		ug/L	1		8260D	Total/NA

Client Sample ID: MW-3R

Lab Sample ID: 400-266187-4

No Detections.

Client Sample ID: MW-6

Lab Sample ID: 400-266187-5

No Detections.

Client Sample ID: MW-7

Lab Sample ID: 400-266187-6

Analyte	Result	Qualifier	RL	MDL	Unit	Dil Fac	D	Method	Prep Type
Benzene	9.4		1.0		ug/L	1		8260D	Total/NA
Toluene	1.2		1.0		ug/L	1		8260D	Total/NA

Client Sample ID: MW-8

Lab Sample ID: 400-266187-7

No Detections.

Client Sample ID: MW-10

Lab Sample ID: 400-266187-8

No Detections.

Client Sample ID: MW-12

Lab Sample ID: 400-266187-9

No Detections.

Client Sample ID: MW-14

Lab Sample ID: 400-266187-10

No Detections.

Client Sample ID: MW-9

Lab Sample ID: 400-266187-11

Analyte	Result	Qualifier	RL	MDL	Unit	Dil Fac	D	Method	Prep Type
Benzene	13		1.0		ug/L	1		8260D	Total/NA
Ethylbenzene	32		1.0		ug/L	1		8260D	Total/NA
Toluene	110		1.0		ug/L	1		8260D	Total/NA
Xylenes, Total	260		10		ug/L	1		8260D	Total/NA

This Detection Summary does not include radiochemical test results.

Eurofins Pensacola

Method Summary

Client: Stantec Consulting Services, Inc.
Project/Site: K27 LD072.00

Job ID: 400-266187-1

Method	Method Description	Protocol	Laboratory
8260D	Volatile Organic Compounds by GC/MS	SW846	EET PEN
5030C	Purge and Trap	SW846	EET PEN

Protocol References:

SW846 = "Test Methods For Evaluating Solid Waste, Physical/Chemical Methods", Third Edition, November 1986 And Its Updates.

Laboratory References:

EET PEN = Eurofins Pensacola, 3355 McLemore Drive, Pensacola, FL 32514, TEL (850)474-1001

- 1
- 2
- 3
- 4
- 5
- 6
- 7
- 8
- 9
- 10
- 11
- 12
- 13
- 14

Sample Summary

Client: Stantec Consulting Services, Inc.
Project/Site: K27 LD072.00

Job ID: 400-266187-1

Lab Sample ID	Client Sample ID	Matrix	Collected	Received
400-266187-1	TB-01	Water	11/14/24 10:15	11/16/24 09:27
400-266187-2	DUP-01	Water	11/14/24 00:00	11/16/24 09:27
400-266187-3	MW-1	Water	11/14/24 10:24	11/16/24 09:27
400-266187-4	MW-3R	Water	11/14/24 11:14	11/16/24 09:27
400-266187-5	MW-6	Water	11/14/24 10:35	11/16/24 09:27
400-266187-6	MW-7	Water	11/14/24 10:41	11/16/24 09:27
400-266187-7	MW-8	Water	11/14/24 10:47	11/16/24 09:27
400-266187-8	MW-10	Water	11/14/24 11:21	11/16/24 09:27
400-266187-9	MW-12	Water	11/14/24 11:30	11/16/24 09:27
400-266187-10	MW-14	Water	11/14/24 11:37	11/16/24 09:27
400-266187-11	MW-9	Water	11/14/24 10:55	11/16/24 09:27

- 1
- 2
- 3
- 4
- 5
- 6
- 7
- 8
- 9
- 10
- 11
- 12
- 13
- 14

Client Sample Results

Client: Stantec Consulting Services, Inc.
 Project/Site: K27 LD072.00

Job ID: 400-266187-1

Client Sample ID: TB-01

Lab Sample ID: 400-266187-1

Date Collected: 11/14/24 10:15

Matrix: Water

Date Received: 11/16/24 09:27

Method: SW846 8260D - Volatile Organic Compounds by GC/MS

Analyte	Result	Qualifier	RL	MDL	Unit	D	Prepared	Analyzed	Dil Fac
Benzene	<1.0		1.0		ug/L			11/26/24 16:39	1
Ethylbenzene	<1.0		1.0		ug/L			11/26/24 16:39	1
Toluene	<1.0		1.0		ug/L			11/26/24 16:39	1
Xylenes, Total	<10		10		ug/L			11/26/24 16:39	1

Surrogate	%Recovery	Qualifier	Limits	Prepared	Analyzed	Dil Fac
4-Bromofluorobenzene	102		72 - 130		11/26/24 16:39	1
Dibromofluoromethane	98		75 - 126		11/26/24 16:39	1
Toluene-d8 (Surr)	103		64 - 132		11/26/24 16:39	1

Client Sample Results

Client: Stantec Consulting Services, Inc.
 Project/Site: K27 LD072.00

Job ID: 400-266187-1

Client Sample ID: DUP-01

Lab Sample ID: 400-266187-2

Date Collected: 11/14/24 00:00

Matrix: Water

Date Received: 11/16/24 09:27

Method: SW846 8260D - Volatile Organic Compounds by GC/MS

Analyte	Result	Qualifier	RL	MDL	Unit	D	Prepared	Analyzed	Dil Fac
Ethylbenzene	7.8		1.0		ug/L			11/26/24 12:07	1
Toluene	170		1.0		ug/L			11/26/24 12:07	1
Xylenes, Total	93		10		ug/L			11/26/24 12:07	1
Surrogate	%Recovery	Qualifier	Limits				Prepared	Analyzed	Dil Fac
4-Bromofluorobenzene	106		72 - 130					11/26/24 12:07	1
Dibromofluoromethane	98		75 - 126					11/26/24 12:07	1
Toluene-d8 (Surr)	108		64 - 132					11/26/24 12:07	1

Method: SW846 8260D - Volatile Organic Compounds by GC/MS - DL

Analyte	Result	Qualifier	RL	MDL	Unit	D	Prepared	Analyzed	Dil Fac
Benzene	280		2.0		ug/L			11/27/24 11:24	2
Surrogate	%Recovery	Qualifier	Limits				Prepared	Analyzed	Dil Fac
4-Bromofluorobenzene	107		72 - 130					11/27/24 11:24	2
Dibromofluoromethane	98		75 - 126					11/27/24 11:24	2
Toluene-d8 (Surr)	106		64 - 132					11/27/24 11:24	2

Client Sample Results

Client: Stantec Consulting Services, Inc.
 Project/Site: K27 LD072.00

Job ID: 400-266187-1

Client Sample ID: MW-1

Lab Sample ID: 400-266187-3

Date Collected: 11/14/24 10:24

Matrix: Water

Date Received: 11/16/24 09:27

Method: SW846 8260D - Volatile Organic Compounds by GC/MS

Analyte	Result	Qualifier	RL	MDL	Unit	D	Prepared	Analyzed	Dil Fac
Benzene	260		1.0		ug/L			11/26/24 12:30	1
Ethylbenzene	6.4		1.0		ug/L			11/26/24 12:30	1
Toluene	150		1.0		ug/L			11/26/24 12:30	1
Xylenes, Total	76		10		ug/L			11/26/24 12:30	1

Surrogate	%Recovery	Qualifier	Limits	Prepared	Analyzed	Dil Fac
4-Bromofluorobenzene	111		72 - 130		11/26/24 12:30	1
Dibromofluoromethane	100		75 - 126		11/26/24 12:30	1
Toluene-d8 (Surr)	109		64 - 132		11/26/24 12:30	1

Client Sample Results

Client: Stantec Consulting Services, Inc.
 Project/Site: K27 LD072.00

Job ID: 400-266187-1

Client Sample ID: MW-3R
Date Collected: 11/14/24 11:14
Date Received: 11/16/24 09:27

Lab Sample ID: 400-266187-4
Matrix: Water

Method: SW846 8260D - Volatile Organic Compounds by GC/MS

Analyte	Result	Qualifier	RL	MDL	Unit	D	Prepared	Analyzed	Dil Fac
Benzene	<1.0		1.0		ug/L			11/20/24 12:05	1
Ethylbenzene	<1.0		1.0		ug/L			11/20/24 12:05	1
Toluene	<1.0		1.0		ug/L			11/20/24 12:05	1
Xylenes, Total	<10		10		ug/L			11/20/24 12:05	1

Surrogate	%Recovery	Qualifier	Limits	Prepared	Analyzed	Dil Fac
4-Bromofluorobenzene	86		72 - 130		11/20/24 12:05	1
Dibromofluoromethane	105		75 - 126		11/20/24 12:05	1
Toluene-d8 (Surr)	96		64 - 132		11/20/24 12:05	1

Client Sample Results

Client: Stantec Consulting Services, Inc.
 Project/Site: K27 LD072.00

Job ID: 400-266187-1

Client Sample ID: MW-6

Lab Sample ID: 400-266187-5

Date Collected: 11/14/24 10:35

Matrix: Water

Date Received: 11/16/24 09:27

Method: SW846 8260D - Volatile Organic Compounds by GC/MS

Analyte	Result	Qualifier	RL	MDL	Unit	D	Prepared	Analyzed	Dil Fac
Benzene	<1.0		1.0		ug/L			11/20/24 12:27	1
Ethylbenzene	<1.0		1.0		ug/L			11/20/24 12:27	1
Toluene	<1.0		1.0		ug/L			11/20/24 12:27	1
Xylenes, Total	<10		10		ug/L			11/20/24 12:27	1

Surrogate	%Recovery	Qualifier	Limits	Prepared	Analyzed	Dil Fac
4-Bromofluorobenzene	86		72 - 130		11/20/24 12:27	1
Dibromofluoromethane	102		75 - 126		11/20/24 12:27	1
Toluene-d8 (Surr)	96		64 - 132		11/20/24 12:27	1

Client Sample Results

Client: Stantec Consulting Services, Inc.
 Project/Site: K27 LD072.00

Job ID: 400-266187-1

Client Sample ID: MW-7

Lab Sample ID: 400-266187-6

Date Collected: 11/14/24 10:41

Matrix: Water

Date Received: 11/16/24 09:27

Method: SW846 8260D - Volatile Organic Compounds by GC/MS

Analyte	Result	Qualifier	RL	MDL	Unit	D	Prepared	Analyzed	Dil Fac
Benzene	9.4		1.0		ug/L			11/20/24 12:49	1
Ethylbenzene	<1.0		1.0		ug/L			11/20/24 12:49	1
Toluene	1.2		1.0		ug/L			11/20/24 12:49	1
Xylenes, Total	<10		10		ug/L			11/20/24 12:49	1

Surrogate	%Recovery	Qualifier	Limits	Prepared	Analyzed	Dil Fac
4-Bromofluorobenzene	85		72 - 130		11/20/24 12:49	1
Dibromofluoromethane	102		75 - 126		11/20/24 12:49	1
Toluene-d8 (Surr)	93		64 - 132		11/20/24 12:49	1

Client Sample Results

Client: Stantec Consulting Services, Inc.
 Project/Site: K27 LD072.00

Job ID: 400-266187-1

Client Sample ID: MW-8

Lab Sample ID: 400-266187-7

Date Collected: 11/14/24 10:47

Matrix: Water

Date Received: 11/16/24 09:27

Method: SW846 8260D - Volatile Organic Compounds by GC/MS

Analyte	Result	Qualifier	RL	MDL	Unit	D	Prepared	Analyzed	Dil Fac
Benzene	<1.0		1.0		ug/L			11/26/24 17:02	1
Ethylbenzene	<1.0		1.0		ug/L			11/26/24 17:02	1
Toluene	<1.0		1.0		ug/L			11/26/24 17:02	1
Xylenes, Total	<10		10		ug/L			11/26/24 17:02	1

Surrogate	%Recovery	Qualifier	Limits	Prepared	Analyzed	Dil Fac
4-Bromofluorobenzene	114		72 - 130		11/26/24 17:02	1
Dibromofluoromethane	102		75 - 126		11/26/24 17:02	1
Toluene-d8 (Surr)	108		64 - 132		11/26/24 17:02	1

Client Sample Results

Client: Stantec Consulting Services, Inc.
 Project/Site: K27 LD072.00

Job ID: 400-266187-1

Client Sample ID: MW-10
Date Collected: 11/14/24 11:21
Date Received: 11/16/24 09:27

Lab Sample ID: 400-266187-8
Matrix: Water

Method: SW846 8260D - Volatile Organic Compounds by GC/MS

Analyte	Result	Qualifier	RL	MDL	Unit	D	Prepared	Analyzed	Dil Fac
Benzene	<1.0		1.0		ug/L			11/26/24 17:24	1
Ethylbenzene	<1.0		1.0		ug/L			11/26/24 17:24	1
Toluene	<1.0		1.0		ug/L			11/26/24 17:24	1
Xylenes, Total	<10		10		ug/L			11/26/24 17:24	1

Surrogate	%Recovery	Qualifier	Limits	Prepared	Analyzed	Dil Fac
4-Bromofluorobenzene	103		72 - 130		11/26/24 17:24	1
Dibromofluoromethane	99		75 - 126		11/26/24 17:24	1
Toluene-d8 (Surr)	102		64 - 132		11/26/24 17:24	1

Client Sample Results

Client: Stantec Consulting Services, Inc.
 Project/Site: K27 LD072.00

Job ID: 400-266187-1

Client Sample ID: MW-12
Date Collected: 11/14/24 11:30
Date Received: 11/16/24 09:27

Lab Sample ID: 400-266187-9
Matrix: Water

Method: SW846 8260D - Volatile Organic Compounds by GC/MS

Analyte	Result	Qualifier	RL	MDL	Unit	D	Prepared	Analyzed	Dil Fac
Benzene	<1.0		1.0		ug/L			11/26/24 17:47	1
Ethylbenzene	<1.0		1.0		ug/L			11/26/24 17:47	1
Toluene	<1.0		1.0		ug/L			11/26/24 17:47	1
Xylenes, Total	<10		10		ug/L			11/26/24 17:47	1

Surrogate	%Recovery	Qualifier	Limits	Prepared	Analyzed	Dil Fac
4-Bromofluorobenzene	103		72 - 130		11/26/24 17:47	1
Dibromofluoromethane	99		75 - 126		11/26/24 17:47	1
Toluene-d8 (Surr)	102		64 - 132		11/26/24 17:47	1

Client Sample Results

Client: Stantec Consulting Services, Inc.
 Project/Site: K27 LD072.00

Job ID: 400-266187-1

Client Sample ID: MW-14
Date Collected: 11/14/24 11:37
Date Received: 11/16/24 09:27

Lab Sample ID: 400-266187-10
Matrix: Water

Method: SW846 8260D - Volatile Organic Compounds by GC/MS

Analyte	Result	Qualifier	RL	MDL	Unit	D	Prepared	Analyzed	Dil Fac
Benzene	<1.0		1.0		ug/L			11/26/24 18:10	1
Ethylbenzene	<1.0		1.0		ug/L			11/26/24 18:10	1
Toluene	<1.0		1.0		ug/L			11/26/24 18:10	1
Xylenes, Total	<10		10		ug/L			11/26/24 18:10	1

Surrogate	%Recovery	Qualifier	Limits	Prepared	Analyzed	Dil Fac
4-Bromofluorobenzene	108		72 - 130		11/26/24 18:10	1
Dibromofluoromethane	99		75 - 126		11/26/24 18:10	1
Toluene-d8 (Surr)	104		64 - 132		11/26/24 18:10	1

Client Sample Results

Client: Stantec Consulting Services, Inc.
 Project/Site: K27 LD072.00

Job ID: 400-266187-1

Client Sample ID: MW-9

Lab Sample ID: 400-266187-11

Date Collected: 11/14/24 10:55

Matrix: Water

Date Received: 11/16/24 09:27

Method: SW846 8260D - Volatile Organic Compounds by GC/MS

Analyte	Result	Qualifier	RL	MDL	Unit	D	Prepared	Analyzed	Dil Fac
Benzene	13		1.0		ug/L			11/26/24 18:32	1
Ethylbenzene	32		1.0		ug/L			11/26/24 18:32	1
Toluene	110		1.0		ug/L			11/26/24 18:32	1
Xylenes, Total	260		10		ug/L			11/26/24 18:32	1

Surrogate	%Recovery	Qualifier	Limits	Prepared	Analyzed	Dil Fac
4-Bromofluorobenzene	118		72 - 130		11/26/24 18:32	1
Dibromofluoromethane	101		75 - 126		11/26/24 18:32	1
Toluene-d8 (Surr)	137	S1+	64 - 132		11/26/24 18:32	1

Definitions/Glossary

Client: Stantec Consulting Services, Inc.
Project/Site: K27 LD072.00

Job ID: 400-266187-1

Qualifiers

GC/MS VOA

Qualifier	Qualifier Description
S1+	Surrogate recovery exceeds control limits, high biased.

Glossary

Abbreviation	These commonly used abbreviations may or may not be present in this report.
☼	Listed under the "D" column to designate that the result is reported on a dry weight basis
%R	Percent Recovery
CFL	Contains Free Liquid
CFU	Colony Forming Unit
CNF	Contains No Free Liquid
DER	Duplicate Error Ratio (normalized absolute difference)
Dil Fac	Dilution Factor
DL	Detection Limit (DoD/DOE)
DL, RA, RE, IN	Indicates a Dilution, Re-analysis, Re-extraction, or additional Initial metals/anion analysis of the sample
DLC	Decision Level Concentration (Radiochemistry)
EDL	Estimated Detection Limit (Dioxin)
LOD	Limit of Detection (DoD/DOE)
LOQ	Limit of Quantitation (DoD/DOE)
MCL	EPA recommended "Maximum Contaminant Level"
MDA	Minimum Detectable Activity (Radiochemistry)
MDC	Minimum Detectable Concentration (Radiochemistry)
MDL	Method Detection Limit
ML	Minimum Level (Dioxin)
MPN	Most Probable Number
MQL	Method Quantitation Limit
NC	Not Calculated
ND	Not Detected at the reporting limit (or MDL or EDL if shown)
NEG	Negative / Absent
POS	Positive / Present
PQL	Practical Quantitation Limit
PRES	Presumptive
QC	Quality Control
RER	Relative Error Ratio (Radiochemistry)
RL	Reporting Limit or Requested Limit (Radiochemistry)
RPD	Relative Percent Difference, a measure of the relative difference between two points
TEF	Toxicity Equivalent Factor (Dioxin)
TEQ	Toxicity Equivalent Quotient (Dioxin)
TNTC	Too Numerous To Count

Lab Chronicle

Client: Stantec Consulting Services, Inc.
 Project/Site: K27 LD072.00

Job ID: 400-266187-1

Client Sample ID: TB-01
Date Collected: 11/14/24 10:15
Date Received: 11/16/24 09:27

Lab Sample ID: 400-266187-1
Matrix: Water

Prep Type	Batch Type	Batch Method	Run	Dil Factor	Initial Amount	Final Amount	Batch Number	Prepared or Analyzed	Analyst	Lab
Total/NA	Analysis	8260D		1	5 mL	5 mL	692447	11/26/24 16:39	WPD	EET PEN

Client Sample ID: DUP-01
Date Collected: 11/14/24 00:00
Date Received: 11/16/24 09:27

Lab Sample ID: 400-266187-2
Matrix: Water

Prep Type	Batch Type	Batch Method	Run	Dil Factor	Initial Amount	Final Amount	Batch Number	Prepared or Analyzed	Analyst	Lab
Total/NA	Analysis	8260D		1	5 mL	5 mL	692447	11/26/24 12:07	WPD	EET PEN
Total/NA	Analysis	8260D	DL	2	5 mL	5 mL	692565	11/27/24 11:24	WPD	EET PEN

Client Sample ID: MW-1
Date Collected: 11/14/24 10:24
Date Received: 11/16/24 09:27

Lab Sample ID: 400-266187-3
Matrix: Water

Prep Type	Batch Type	Batch Method	Run	Dil Factor	Initial Amount	Final Amount	Batch Number	Prepared or Analyzed	Analyst	Lab
Total/NA	Analysis	8260D		1	5 mL	5 mL	692447	11/26/24 12:30	WPD	EET PEN

Client Sample ID: MW-3R
Date Collected: 11/14/24 11:14
Date Received: 11/16/24 09:27

Lab Sample ID: 400-266187-4
Matrix: Water

Prep Type	Batch Type	Batch Method	Run	Dil Factor	Initial Amount	Final Amount	Batch Number	Prepared or Analyzed	Analyst	Lab
Total/NA	Analysis	8260D		1	5 mL	5 mL	691766	11/20/24 12:05	WPD	EET PEN

Client Sample ID: MW-6
Date Collected: 11/14/24 10:35
Date Received: 11/16/24 09:27

Lab Sample ID: 400-266187-5
Matrix: Water

Prep Type	Batch Type	Batch Method	Run	Dil Factor	Initial Amount	Final Amount	Batch Number	Prepared or Analyzed	Analyst	Lab
Total/NA	Analysis	8260D		1	5 mL	5 mL	691766	11/20/24 12:27	WPD	EET PEN

Client Sample ID: MW-7
Date Collected: 11/14/24 10:41
Date Received: 11/16/24 09:27

Lab Sample ID: 400-266187-6
Matrix: Water

Prep Type	Batch Type	Batch Method	Run	Dil Factor	Initial Amount	Final Amount	Batch Number	Prepared or Analyzed	Analyst	Lab
Total/NA	Analysis	8260D		1	5 mL	5 mL	691766	11/20/24 12:49	WPD	EET PEN

Client Sample ID: MW-8
Date Collected: 11/14/24 10:47
Date Received: 11/16/24 09:27

Lab Sample ID: 400-266187-7
Matrix: Water

Prep Type	Batch Type	Batch Method	Run	Dil Factor	Initial Amount	Final Amount	Batch Number	Prepared or Analyzed	Analyst	Lab
Total/NA	Analysis	8260D		1	5 mL	5 mL	692447	11/26/24 17:02	WPD	EET PEN

Eurofins Pensacola

Lab Chronicle

Client: Stantec Consulting Services, Inc.
Project/Site: K27 LD072.00

Job ID: 400-266187-1

Client Sample ID: MW-10

Lab Sample ID: 400-266187-8

Date Collected: 11/14/24 11:21

Matrix: Water

Date Received: 11/16/24 09:27

Prep Type	Batch Type	Batch Method	Run	Dil Factor	Initial Amount	Final Amount	Batch Number	Prepared or Analyzed	Analyst	Lab
Total/NA	Analysis	8260D		1	5 mL	5 mL	692447	11/26/24 17:24	WPD	EET PEN

Client Sample ID: MW-12

Lab Sample ID: 400-266187-9

Date Collected: 11/14/24 11:30

Matrix: Water

Date Received: 11/16/24 09:27

Prep Type	Batch Type	Batch Method	Run	Dil Factor	Initial Amount	Final Amount	Batch Number	Prepared or Analyzed	Analyst	Lab
Total/NA	Analysis	8260D		1	5 mL	5 mL	692447	11/26/24 17:47	WPD	EET PEN

Client Sample ID: MW-14

Lab Sample ID: 400-266187-10

Date Collected: 11/14/24 11:37

Matrix: Water

Date Received: 11/16/24 09:27

Prep Type	Batch Type	Batch Method	Run	Dil Factor	Initial Amount	Final Amount	Batch Number	Prepared or Analyzed	Analyst	Lab
Total/NA	Analysis	8260D		1	5 mL	5 mL	692447	11/26/24 18:10	WPD	EET PEN

Client Sample ID: MW-9

Lab Sample ID: 400-266187-11

Date Collected: 11/14/24 10:55

Matrix: Water

Date Received: 11/16/24 09:27

Prep Type	Batch Type	Batch Method	Run	Dil Factor	Initial Amount	Final Amount	Batch Number	Prepared or Analyzed	Analyst	Lab
Total/NA	Analysis	8260D		1	5 mL	5 mL	692447	11/26/24 18:32	WPD	EET PEN

Client Sample ID: Method Blank

Lab Sample ID: MB 400-691766/5

Date Collected: N/A

Matrix: Water

Date Received: N/A

Prep Type	Batch Type	Batch Method	Run	Dil Factor	Initial Amount	Final Amount	Batch Number	Prepared or Analyzed	Analyst	Lab
Total/NA	Analysis	8260D		1	5 mL	5 mL	691766	11/20/24 08:25	WPD	EET PEN

Client Sample ID: Method Blank

Lab Sample ID: MB 400-692447/4

Date Collected: N/A

Matrix: Water

Date Received: N/A

Prep Type	Batch Type	Batch Method	Run	Dil Factor	Initial Amount	Final Amount	Batch Number	Prepared or Analyzed	Analyst	Lab
Total/NA	Analysis	8260D		1	5 mL	5 mL	692447	11/26/24 09:28	WPD	EET PEN

Client Sample ID: Method Blank

Lab Sample ID: MB 400-692565/4

Date Collected: N/A

Matrix: Water

Date Received: N/A

Prep Type	Batch Type	Batch Method	Run	Dil Factor	Initial Amount	Final Amount	Batch Number	Prepared or Analyzed	Analyst	Lab
Total/NA	Analysis	8260D		1	5 mL	5 mL	692565	11/27/24 08:22	WPD	EET PEN

Eurofins Pensacola

Lab Chronicle

Client: Stantec Consulting Services, Inc.
Project/Site: K27 LD072.00

Job ID: 400-266187-1

Client Sample ID: Lab Control Sample

Lab Sample ID: LCS 400-691766/1002

Date Collected: N/A

Matrix: Water

Date Received: N/A

Prep Type	Batch Type	Batch Method	Run	Dil Factor	Initial Amount	Final Amount	Batch Number	Prepared or Analyzed	Analyst	Lab
Total/NA	Analysis	8260D		1	5 mL	5 mL	691766	11/20/24 07:19	WPD	EET PEN

Client Sample ID: Lab Control Sample

Lab Sample ID: LCS 400-692447/1002

Date Collected: N/A

Matrix: Water

Date Received: N/A

Prep Type	Batch Type	Batch Method	Run	Dil Factor	Initial Amount	Final Amount	Batch Number	Prepared or Analyzed	Analyst	Lab
Total/NA	Analysis	8260D		1	5 mL	5 mL	692447	11/26/24 08:33	WPD	EET PEN

Client Sample ID: Lab Control Sample

Lab Sample ID: LCS 400-692565/1002

Date Collected: N/A

Matrix: Water

Date Received: N/A

Prep Type	Batch Type	Batch Method	Run	Dil Factor	Initial Amount	Final Amount	Batch Number	Prepared or Analyzed	Analyst	Lab
Total/NA	Analysis	8260D		1	5 mL	5 mL	692565	11/27/24 07:27	WPD	EET PEN

Laboratory References:

EET PEN = Eurofins Pensacola, 3355 McLemore Drive, Pensacola, FL 32514, TEL (850)474-1001

QC Association Summary

Client: Stantec Consulting Services, Inc.
Project/Site: K27 LD072.00

Job ID: 400-266187-1

GC/MS VOA

Analysis Batch: 691766

Lab Sample ID	Client Sample ID	Prep Type	Matrix	Method	Prep Batch
400-266187-4	MW-3R	Total/NA	Water	8260D	
400-266187-5	MW-6	Total/NA	Water	8260D	
400-266187-6	MW-7	Total/NA	Water	8260D	
MB 400-691766/5	Method Blank	Total/NA	Water	8260D	
LCS 400-691766/1002	Lab Control Sample	Total/NA	Water	8260D	

Analysis Batch: 692447

Lab Sample ID	Client Sample ID	Prep Type	Matrix	Method	Prep Batch
400-266187-1	TB-01	Total/NA	Water	8260D	
400-266187-2	DUP-01	Total/NA	Water	8260D	
400-266187-3	MW-1	Total/NA	Water	8260D	
400-266187-7	MW-8	Total/NA	Water	8260D	
400-266187-8	MW-10	Total/NA	Water	8260D	
400-266187-9	MW-12	Total/NA	Water	8260D	
400-266187-10	MW-14	Total/NA	Water	8260D	
400-266187-11	MW-9	Total/NA	Water	8260D	
MB 400-692447/4	Method Blank	Total/NA	Water	8260D	
LCS 400-692447/1002	Lab Control Sample	Total/NA	Water	8260D	

Analysis Batch: 692565

Lab Sample ID	Client Sample ID	Prep Type	Matrix	Method	Prep Batch
400-266187-2 - DL	DUP-01	Total/NA	Water	8260D	
MB 400-692565/4	Method Blank	Total/NA	Water	8260D	
LCS 400-692565/1002	Lab Control Sample	Total/NA	Water	8260D	

Eurofins Pensacola

QC Sample Results

Client: Stantec Consulting Services, Inc.
Project/Site: K27 LD072.00

Job ID: 400-266187-1

Method: 8260D - Volatile Organic Compounds by GC/MS

Lab Sample ID: MB 400-691766/5
Matrix: Water
Analysis Batch: 691766

Client Sample ID: Method Blank
Prep Type: Total/NA

Analyte	MB	MB	RL	MDL	Unit	D	Prepared	Analyzed	Dil Fac
	Result	Qualifier							
Benzene	<1.0		1.0		ug/L			11/20/24 08:25	1
Ethylbenzene	<1.0		1.0		ug/L			11/20/24 08:25	1
Toluene	<1.0		1.0		ug/L			11/20/24 08:25	1
Xylenes, Total	<10		10		ug/L			11/20/24 08:25	1

Surrogate	MB	MB	Limits	Prepared	Analyzed	Dil Fac
	%Recovery	Qualifier				
4-Bromofluorobenzene	85		72 - 130		11/20/24 08:25	1
Dibromofluoromethane	104		75 - 126		11/20/24 08:25	1
Toluene-d8 (Surr)	94		64 - 132		11/20/24 08:25	1

Lab Sample ID: LCS 400-691766/1002
Matrix: Water
Analysis Batch: 691766

Client Sample ID: Lab Control Sample
Prep Type: Total/NA

Analyte	Spike Added	LCS	LCS	Unit	D	%Rec	%Rec Limits
		Result	Qualifier				
Benzene	50.0	45.0		ug/L		90	70 - 130
m-Xylene & p-Xylene	50.0	45.1		ug/L		90	70 - 130
o-Xylene	50.0	45.6		ug/L		91	70 - 130
Ethylbenzene	50.0	47.5		ug/L		95	70 - 130
Toluene	50.0	47.9		ug/L		96	70 - 130

Surrogate	LCS	LCS	Limits
	%Recovery	Qualifier	
4-Bromofluorobenzene	96		72 - 130
Dibromofluoromethane	83		75 - 126
Toluene-d8 (Surr)	97		64 - 132
1,2-Dichloroethane-d4 (Surr)	69		67 - 134

Lab Sample ID: MB 400-692447/4
Matrix: Water
Analysis Batch: 692447

Client Sample ID: Method Blank
Prep Type: Total/NA

Analyte	MB	MB	RL	MDL	Unit	D	Prepared	Analyzed	Dil Fac
	Result	Qualifier							
Benzene	<1.0		1.0		ug/L			11/26/24 09:28	1
Ethylbenzene	<1.0		1.0		ug/L			11/26/24 09:28	1
Toluene	<1.0		1.0		ug/L			11/26/24 09:28	1
Xylenes, Total	<10		10		ug/L			11/26/24 09:28	1

Surrogate	MB	MB	Limits	Prepared	Analyzed	Dil Fac
	%Recovery	Qualifier				
4-Bromofluorobenzene	101		72 - 130		11/26/24 09:28	1
Dibromofluoromethane	98		75 - 126		11/26/24 09:28	1
Toluene-d8 (Surr)	102		64 - 132		11/26/24 09:28	1

Lab Sample ID: LCS 400-692447/1002
Matrix: Water
Analysis Batch: 692447

Client Sample ID: Lab Control Sample
Prep Type: Total/NA

Analyte	Spike Added	LCS	LCS	Unit	D	%Rec	%Rec Limits
		Result	Qualifier				
Benzene	50.0	53.2		ug/L		106	70 - 130

Eurofins Pensacola

QC Sample Results

Client: Stantec Consulting Services, Inc.
Project/Site: K27 LD072.00

Job ID: 400-266187-1

Method: 8260D - Volatile Organic Compounds by GC/MS (Continued)

Lab Sample ID: LCS 400-692447/1002
Matrix: Water
Analysis Batch: 692447

Client Sample ID: Lab Control Sample
Prep Type: Total/NA

Analyte	Spike Added	LCS Result	LCS Qualifier	Unit	D	%Rec	%Rec Limits
m-Xylene & p-Xylene	50.0	52.6		ug/L		105	70 - 130
o-Xylene	50.0	54.4		ug/L		109	70 - 130
Ethylbenzene	50.0	55.3		ug/L		111	70 - 130
Toluene	50.0	55.9		ug/L		112	70 - 130

Surrogate	LCS %Recovery	LCS Qualifier	Limits
4-Bromofluorobenzene	99		72 - 130
Dibromofluoromethane	98		75 - 126
Toluene-d8 (Surr)	101		64 - 132
1,2-Dichloroethane-d4 (Surr)	112		67 - 134

Lab Sample ID: MB 400-692565/4
Matrix: Water
Analysis Batch: 692565

Client Sample ID: Method Blank
Prep Type: Total/NA

Analyte	MB Result	MB Qualifier	RL	MDL	Unit	D	Prepared	Analyzed	Dil Fac
Benzene	<1.0		1.0		ug/L			11/27/24 08:22	1

Surrogate	MB %Recovery	MB Qualifier	Limits	Prepared	Analyzed	Dil Fac
4-Bromofluorobenzene	98		72 - 130		11/27/24 08:22	1
Dibromofluoromethane	98		75 - 126		11/27/24 08:22	1
Toluene-d8 (Surr)	99		64 - 132		11/27/24 08:22	1

Lab Sample ID: LCS 400-692565/1002
Matrix: Water
Analysis Batch: 692565

Client Sample ID: Lab Control Sample
Prep Type: Total/NA

Analyte	Spike Added	LCS Result	LCS Qualifier	Unit	D	%Rec	%Rec Limits
Benzene	50.0	52.0		ug/L		104	70 - 130

Surrogate	LCS %Recovery	LCS Qualifier	Limits
4-Bromofluorobenzene	97		72 - 130
Dibromofluoromethane	97		75 - 126
Toluene-d8 (Surr)	101		64 - 132
1,2-Dichloroethane-d4 (Surr)	107		67 - 134

Login Sample Receipt Checklist

Client: Stantec Consulting Services, Inc.

Job Number: 400-266187-1

Login Number: 266187

List Source: Eurofins Pensacola

List Number: 1

Creator: Pardonner, Brett

Question	Answer	Comment
Radioactivity wasn't checked or is </= background as measured by a survey meter.	N/A	
The cooler's custody seal, if present, is intact.	True	
Sample custody seals, if present, are intact.	N/A	
The cooler or samples do not appear to have been compromised or tampered with.	True	
Samples were received on ice.	True	
Cooler Temperature is acceptable.	True	
Cooler Temperature is recorded.	True	0.0°C IR11
COC is present.	True	
COC is filled out in ink and legible.	True	
COC is filled out with all pertinent information.	True	
Is the Field Sampler's name present on COC?	True	
There are no discrepancies between the containers received and the COC.	True	
Samples are received within Holding Time (excluding tests with immediate HTs)	True	
Sample containers have legible labels.	True	
Containers are not broken or leaking.	True	
Sample collection date/times are provided.	True	
Appropriate sample containers are used.	True	
Sample bottles are completely filled.	True	
Sample Preservation Verified.	N/A	
There is sufficient vol. for all requested analyses, incl. any requested MS/MSDs	True	
Containers requiring zero headspace have no headspace or bubble is <6mm (1/4").	True	
Multiphasic samples are not present.	True	
Samples do not require splitting or compositing.	True	
Residual Chlorine Checked.	N/A	

Accreditation/Certification Summary

Client: Stantec Consulting Services, Inc.
 Project/Site: K27 LD072.00

Job ID: 400-266187-1

Laboratory: Eurofins Pensacola

All accreditations/certifications held by this laboratory are listed. Not all accreditations/certifications are applicable to this report.

Authority	Program	Identification Number	Expiration Date
Alabama	State	40150	06-30-25
ANAB	ISO/IEC 17025	L2471	02-22-26
Arkansas DEQ	State	88-00689	08-01-25
California	State	2510	06-30-25
Florida	NELAP	E81010	06-30-25
Georgia	State	E81010(FL)	06-30-25
Illinois	NELAP	200041	10-09-25
Kansas	NELAP	E-10253	10-31-25
Kentucky (UST)	State	53	06-30-25
Louisiana (All)	NELAP	30976	06-30-25
Louisiana (DW)	State	LA017	12-31-24
North Carolina (WW/SW)	State	314	12-31-24
Oklahoma	NELAP	9810	08-31-25
Pennsylvania	NELAP	68-00467	01-31-25
South Carolina	State	96026	06-30-25
Tennessee	State	TN02907	06-30-25
Texas	NELAP	T104704286	09-30-25
US Fish & Wildlife	US Federal Programs	A22340	06-30-25
USDA	US Federal Programs	P330-21-00056	01-09-26
USDA	US Federal Programs	FLGNV23001	01-08-26
Virginia	NELAP	460166	06-14-25
West Virginia DEP	State	136	03-31-25

- 1
- 2
- 3
- 4
- 5
- 6
- 7
- 8
- 9
- 10
- 11
- 12
- 13
- 14

Sante Fe Main Office
Phone: (505) 476-3441

General Information
Phone: (505) 629-6116

Online Phone Directory
<https://www.emnrd.nm.gov/ocd/contact-us>

State of New Mexico
Energy, Minerals and Natural Resources
Oil Conservation Division
1220 S. St Francis Dr.
Santa Fe, NM 87505

CONDITIONS

Action 560759

CONDITIONS

Operator: El Paso Natural Gas Company, L.L.C 1001 Louisiana Street Houston, TX 77002	OGRID: 7046
	Action Number: 560759
	Action Type: [UF-GWA] Ground Water Abatement (GROUND WATER ABATEMENT)

CONDITIONS

Created By	Condition	Condition Date
owen.sitler	This report is accepted with the following conditions: 1) Continue quarterly removal of LNAPL if measurable. 2) Continue groundwater monitoring on a semi-annual basis at monitoring wells that contain LNAPL and biennially from wells not containing LNAPL. 3) Continue analysis for BTEX using EPA Method 8260.	3/25/2026