



SITE INFORMATION

Closure Report
Mamba 30 State South CTB
Incident ID: nAPP2604152281
Lea County, New Mexico
Unit O Sec 30 T24S R33E
32.183779°, -103.607676°

Crude Oil Release
Point of Release: Human Error
Release Date: 02/04/2026
Volume Released: 10 Barrels of Crude Oil
Volume Recovered: 10 Barrels of Crude Oil

CARMONA RESOURCES



Prepared for:
EOG Resources Inc.
5509 Champions Drive
Midland, Texas 79706

Prepared by:
Carmona Resources, LLC
310 West Wall Street
Suite 500
Midland, Texas 79701



TABLE OF CONTENTS

1.0 SITE INFORMATION AND BACKGROUND

2.0 SITE CHARACTERIZATION AND GROUNDWATER

3.0 NMAC REGULATORY CRITERIA

4.0 LINER INSPECTION ACTIVITIES

5.0 CONCLUSIONS

FIGURES

FIGURE 1	OVERVIEW	FIGURE 2	TOPOGRAPHIC
FIGURE 3	SECONDARY CONTAINMENT		

APPENDICES

APPENDIX A	PHOTOS
APPENDIX B	N.O.R/NMOCD & NMSLO CORRESPONDENCE
APPENDIX C	SITE CHARACTERIZATION AND GROUNDWATER
APPENDIX D	BIOLOGICAL/ CULTURAL DESKTOP REVIEW



March 31, 2026

New Mexico State Land Office
310 Old Santa Fe Trail
Santa Fe, NM 87505

Re: Closure Report
Mamba 30 State South CTB
Incident ID: nAPP2604152281
EOG Resources Inc.
Site Location: Unit O, S30, T24S, R33E
(Lat 32.183779°, Long -103.607676°)
Lea County, New Mexico

To whom it may concern:

On behalf of EOG Resources Inc. (EOG) Carmona Resources LLC has prepared this letter to document site activities for the Mamba 30 State South CTB. The site is located at 32.183779°, -103.607676° within Unit O, S30, T24S, R33E, in Lea County, New Mexico (Figures 1 and 2).

1.0 Site Information and Background

Based on the Notification of Release and initial C-141 forms obtained from the New Mexico Oil Conservation Division (NMOCD), the release was discovered on February 4, 2026, due to human error when a ball valve on the LACT unit was left slightly open causing a leak. It resulted in approximately ten (10) barrels of crude oil being released and ten (10) barrels of crude oil being recovered. Refer to Figure 3. The Notification of Release and initial C-141 forms are attached in Appendix B.

2.0 Site Characterization and Groundwater

The site is located within a low karst area. Based on a review of the New Mexico Office of State Engineers and USGS databases, there are no known water sources within a 0.50-mile radius of the location. The nearest groundwater determination bore is located approximately 0.09 miles Southeast of the site in S30, T24S, R33E and was drilled in 2022. The bore was drilled to a depth of 55' below ground surface (ft bgs) and no groundwater was encountered. A copy of the associated Summary report is attached in Appendix C.

The site location is more than 1,000 feet away from the nearest freshwater well or spring and does not lie within a 100-year floodplain or overlying a subsurface mine. There are no continuously flowing watercourses that run in close proximity to the site location. The nearest continuously flowing watercourse is the Pecos River, which is greater than 5.0 miles West of the site. No lakebeds, sinkholes, or playa lakes are located within 200 feet of the site. The closest seasonal water path is an intermittent dry wash located approximately 4.12 miles northeast of the site. The site is not located within 300 feet of an occupied permanent residence, school, hospital, institution, or church. There are no springs or private or domestic freshwater wells within 500 feet of the site location. A copy of the groundwater characterization is attached in Appendix C.

Cultural and Biological Compliance:

Before site activities could proceed, a desktop review was conducted to ensure there were no endangered and sensitive wildlife and plant species within the area. After further review, the site does fall within a biologically sensitive area for the Lesser Prairie Chicken population. Though it is rated a CHAT Level-4 area, the adjacent surroundings serve as suitable habitat for the critical species. Therefore, Carmona Resources determined that the liner inspection would not affect the LPC population within this crucial



area. Per the NMDGF (New Mexico Department of Game and Fish), areas with ‘*sand sage used for nesting habitat*’ was avoided to comply with LPC management practices enforced by the NMDGF. The NMDGF also states that ‘*any construction activities in proximity of leks during early morning lekking periods (3:00 AM – 9:00 AM) during lekking season (Feb 15-May 15)*’ should be avoided. For good measure, EOG still complied with Lesser Prairie Chicken management practices enforced by the NMDGF by not commencing any work until after 9:00 AM local time. Compliance with the CPP Rule was maintained accordingly since the release occurred within the lined containment on the well pad. Based on the lack of environmentally sensitive receptors nearby, no Arch and/or SSPS surveys were necessary since the release did not extend beyond the facility containment boundaries. Furthermore, EOG strives to provide equal or better protection of fresh water, public health, and the environment as mandated by federal and state regulations. See Appendix D for further details explained in the biological desktop review.

3.0 NMAC Regulatory Criteria

Per the NMOCD regulatory criteria established in 19.15.29.12 NMAC, the following criteria were utilized in assessing the site.

- Benzene: 10 milligrams per kilogram (mg/kg).
- Benzene, toluene, ethylbenzene, and total xylenes (BTEX): 50 mg/kg.
- TPH: 1,000 (GRO +DRO)
- TPH: 2,500 mg/kg (GRO + DRO + MRO).
- Chloride: 10,000 mg/kg.

4.0 Liner Inspection Activities

Before conducting the liner inspection, the NMOCD was notified via the portal on February 23, 2026. The NMSLO was notified via email on February 23, 2026. A crew previously arrived on site to remove all freestanding fluids. After the plastic liner was thoroughly cleaned, Carmona Resources personnel inspected the liner to assess its structural integrity. On February 25, 2026, Carmona Resources, LLC carried out liner inspection activities and confirmed that the liner was intact with no integrity issues. Refer to the Photolog for details.

5.0 Conclusions

Based on the liner inspection throughout the facility, no further actions are required at the site. If you have any questions regarding this report or need additional information, don’t hesitate to contact us at 432-813-6823.

Sincerely,

Carmona Resources, LLC

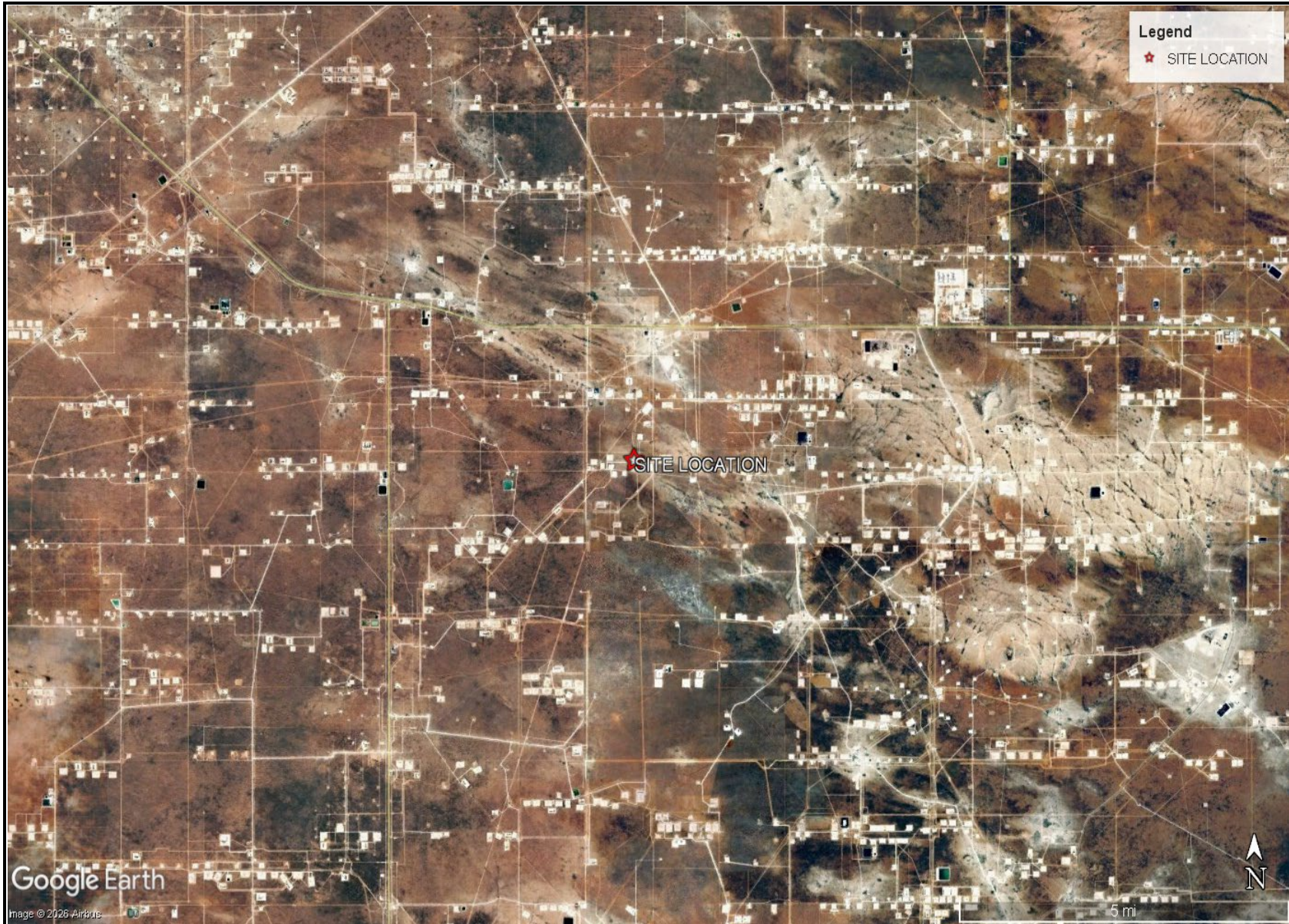
Conner Mochring
Environmental Manager

Ivan Ramos
Project Manager

FIGURES

CARMONA RESOURCES

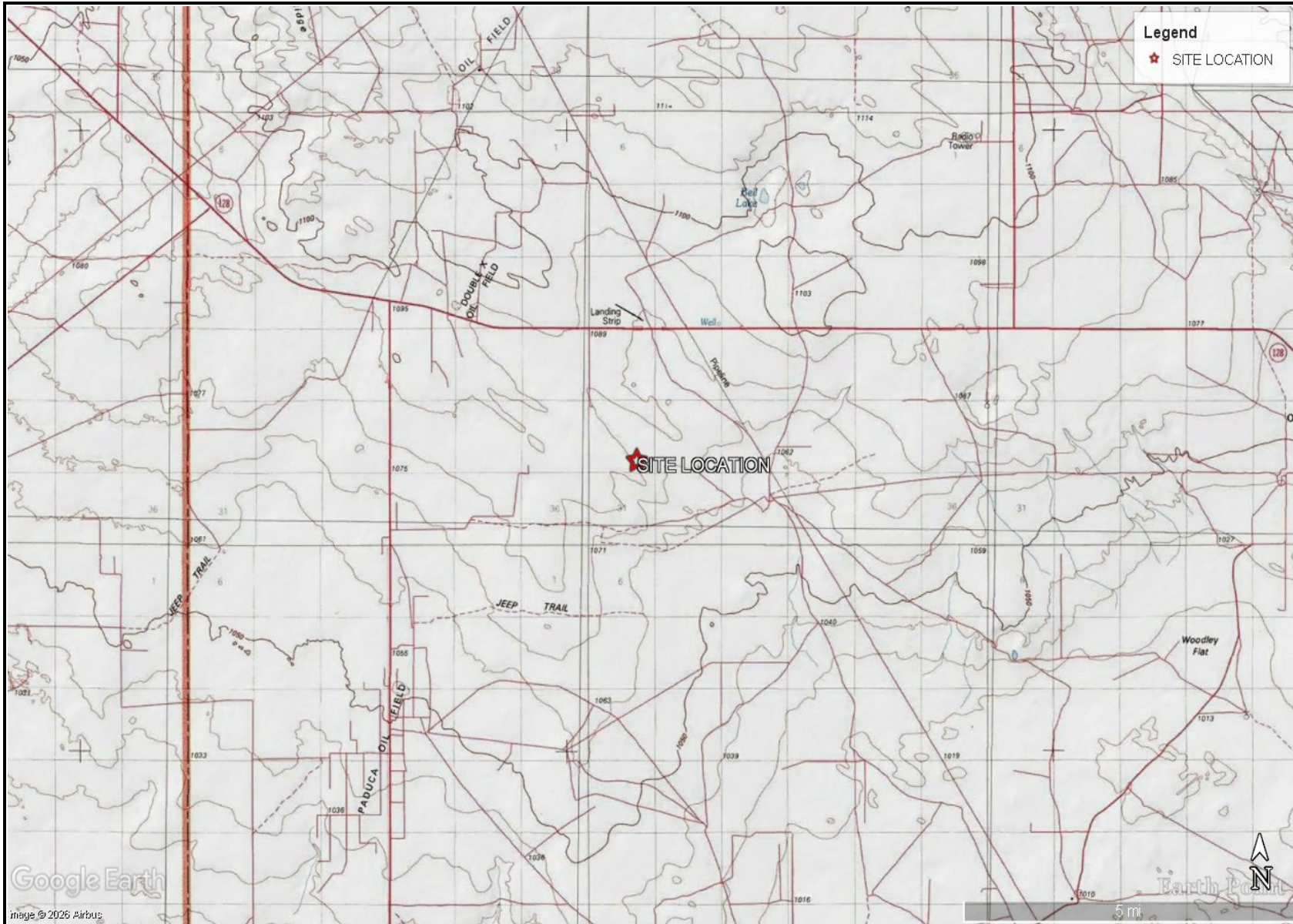




OVERVIEW MAP
EOG RESOURCES
MAMBA 30 STATE SOUTH CTB
LEA COUNTY, NEW MEXICO
32.183779°, -103.607676°



FIGURE 1





TOPOGRAPHIC MAP
EOG RESOURCES
MAMBA 30 STATE SOUTH CTB
LEA COUNTY, NEW MEXICO
32.183779°, -103.607676°



FIGURE 2



Legend

-  Area of Liner Inspection
-  Lined Facility

Google Earth
Image ©2026, Airbus

<p>SECONDARY CONTAINMENT MAP EOG RESOURCES MAMBA 30 STATE SOUTH CTB LEA COUNTY, NEW MEXICO 32.183779°, -103.607676°</p>	<p>CARMONA RESOURCES </p>	<p>FIGURE 3</p>
---	--	-----------------

APPENDIX A

CARMONA RESOURCES



PHOTOGRAPHIC LOG

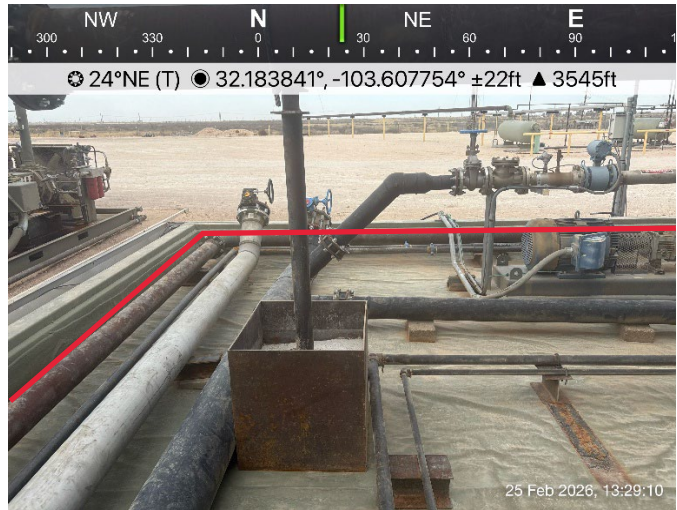
EOG Resources

Photograph No. 1

Facility: Mamba 30 State South CTB

County: Lea County, New Mexico

Description:
View North of lined containment

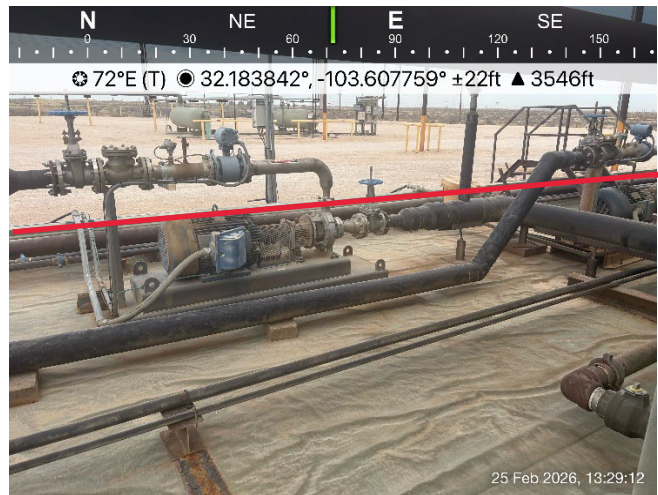


Photograph No. 2

Facility: Mamba 30 State South CTB

County: Lea County, New Mexico

Description:
View East of lined containment

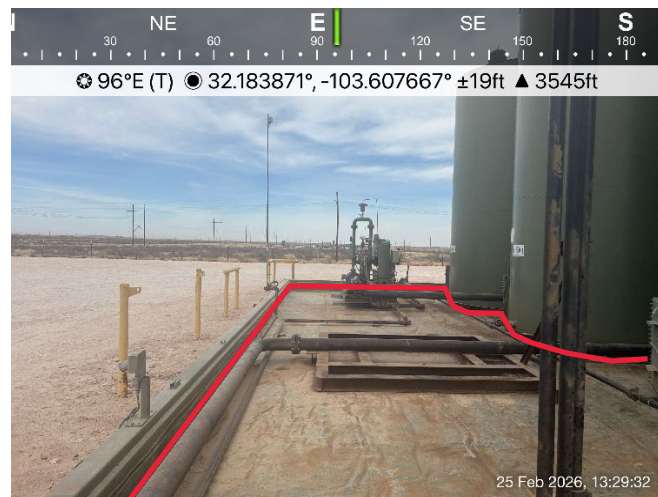


Photograph No. 3

Facility: Mamba 30 State South CTB

County: Lea County, New Mexico

Description:
View East of lined containment



PHOTOGRAPHIC LOG

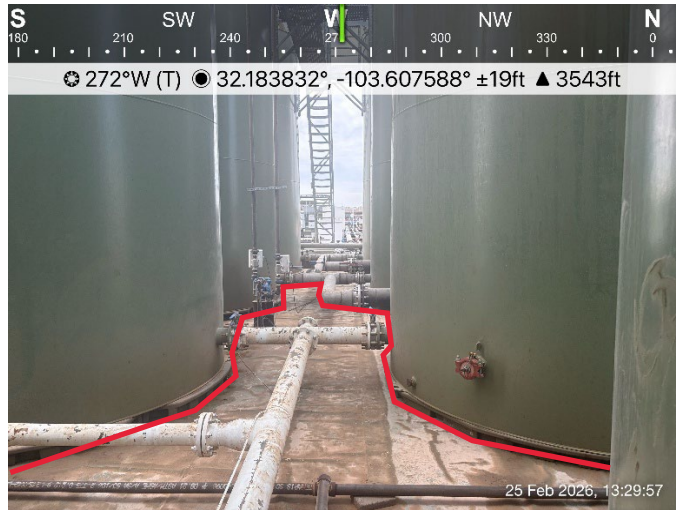
EOG Resources

Photograph No. 4

Facility: Mamba 30 State South CTB

County: Lea County, New Mexico

Description:
View West of lined containment

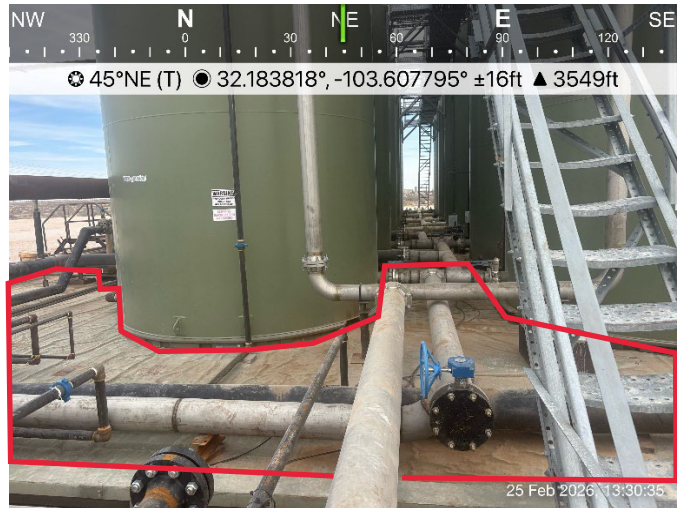


Photograph No. 5

Facility: Hemlock BSH State CTB (12.07.25)

County: Lea County, New Mexico

Description:
View Northeast of lined containment

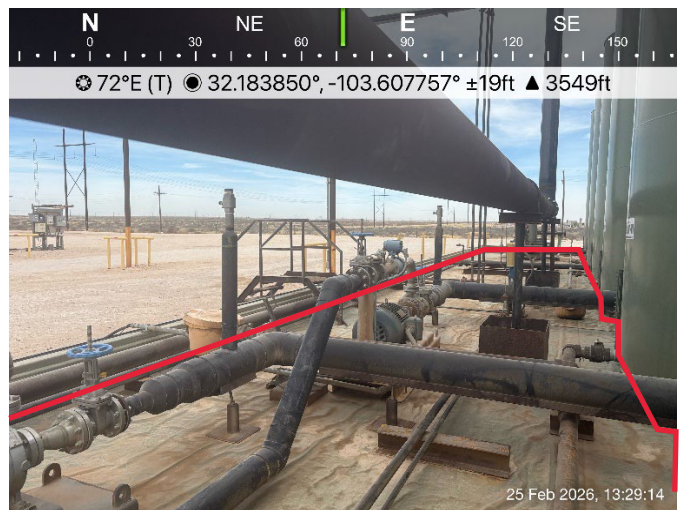


Photograph No. 6

Facility: Hemlock BSH State CTB (12.07.25)

County: Lea County, New Mexico

Description:
View East of lined containment



APPENDIX B

CARMONA RESOURCES



***** LIQUID SPILLS - VOLUME CALCULATIONS *****

Location of spill: Mamba 30 State South CTB

Date of Spill: 2/4/2026

If the leak/spill is associated with production equipment, i.e. - wellhead, stuffing box, flowline, tank battery, production vessel, transfer pump, or storage tank place an "X" here:

Input Data:

If spill volumes from measurement, i.e. metering, tank volumes, etc. are known enter the volumes here: OIL: 10.0000 BBL WATER: 0.0000 BBL

If "known" spill volumes are given, input data for the following "Area Calculations" is optional. The above will override the calculated volumes.

Total Area Calculations					Standing Liquid Calculations				
Total Surface Area	width	length	wet soil depth	oil (%)	Standing Liquid Area	width	length	liquid depth	oil (%)
Rectangle Area #1	0 ft x	0 ft X	0.00 in	0%	Rectangle Area #1	0 ft X	0 ft X	0 in	0%
Rectangle Area #2	0 ft X	0 ft X	0.00 in	0%	Rectangle Area #2	0 ft X	0 ft X	0 in	0%
Rectangle Area #3	0 ft X	0 ft X	0.00 in	0%	Rectangle Area #3	0 ft X	0 ft X	0 in	0%
Rectangle Area #4	0 ft X	0 ft X	0.00 in	0%	Rectangle Area #4	0 ft X	0 ft X	0 in	0%
Rectangle Area #5	0 ft X	0 ft X	0.00 in	0%	Rectangle Area #5	0 ft X	0 ft X	0 in	0%
Rectangle Area #6	0 ft X	0 ft X	0.00 in	0%	Rectangle Area #6	0 ft X	0 ft X	0 in	0%
Rectangle Area #7	0 ft X	0 ft X	0.00 in	0%	Rectangle Area #7	0 ft X	0 ft X	0 in	0%
Rectangle Area #8	0 ft X	0 ft X	0.00 in	0%	Rectangle Area #8	0 ft X	0 ft X	0 in	0%

okay

production system leak - DAILY PRODUCTION DATA REQUIRED

Average Daily Production: Oil 0 BBL Water 0 BBL

Did leak occur before the separator?: YES N/A (place an "X")

Amount of Free Liquid Recovered: 10 BBL **ERROR - Recovered volume greater than spilled volume**

Percentage of Oil in Free Liquid Recovered: 100% (percentage)

Liquid holding factor *: 0.14 gal per gal

Use the following when the spill wets the grains of the soil.

- * sand = .08 gallon liquid per gallon volume of soil.
- * gravelly (caliche) loam = .14 gallon liquid per gallon volume of soil.
- * sandy clay loam soil = .14 gallon liquid per gallon volume of soil.
- * clay loam = .16 gallon liquid per gallon volume of soil.

Use the following when the liquid completely fills the pore space of the soil.

- Occurs when the spill soaked soil is contained by barriers, natural (or not).
- * gravelly (caliche) loam = .25 gallon liquid per gallon volume of soil.
- * sandy loam = .5 gallon liquid per gallon volume of soil.

Saturated Soil Volume Calculations:				Free Liquid Volume Calculations:			
Total Solid/Liquid Volume:	sq. ft.	H2O cu. ft.	OIL cu. ft.	Total Free Liquid Volume:	sq. ft.	H2O .000 cu. ft.	OIL .000 cu. ft.
Estimated Volumes Spilled				Estimated Production Volumes Lost			
Liquid in Soil:		<u>0.0 BBL</u>	<u>0.0 BBL</u>	Estimated Production Spilled:		<u>0.000000 BBL</u>	<u>10.000000 BBL</u>
Free Liquid:		<u>0.0 BBL</u>	<u>0.0 BBL</u>	Estimated Surface Damage			
Totals:		<u>0.000 BBL</u>	<u>0.000 BBL</u>	Surface Area:	sq. ft.		
Total Liquid Spill Liquid:		<u>0.000 BBL</u>	<u>10.000 BBL</u>	Surface Area:	.0000 acre		
Recovered Volumes				Estimated Weights, and Volumes			
Estimated oil recovered:	<u>10.0 BBL</u>	check - okay		Saturated Soil =	lbs	cu.ft.	cu.yds.
Estimated water recovered:	<u>0.0 BBL</u>	check - okay		Total Liquid =	<u>10 BBL</u>	<u>420.00</u> gallon	<u>3,494</u> lbs

Sante Fe Main Office
Phone: (505) 476-3441

General Information
Phone: (505) 629-6116

Online Phone Directory
<https://www.emnrd.nm.gov/ocd/contact-us>

State of New Mexico
Energy, Minerals and Natural Resources
Oil Conservation Division
1220 S. St Francis Dr.
Santa Fe, NM 87505

QUESTIONS

Action 552537

QUESTIONS

Operator: EOG RESOURCES INC 5509 Champions Drive Midland, TX 79706	OGRID: 7377
	Action Number: 552537
	Action Type: [C-141] Initial C-141 (C-141-v-Initial)

QUESTIONS

Prerequisites	
Incident ID (n#)	nAPP2604152281
Incident Name	NAPP2604152281 MAMBA 30 STATE SOUTH CTB @ FAPP2203935529
Incident Type	Oil Release
Incident Status	Initial C-141 Received
Incident Facility	[fAPP2203935529] MAMBA 30 STATE SOUTH CTB

Location of Release Source	
<i>Please answer all the questions in this group.</i>	
Site Name	MAMBA 30 STATE SOUTH CTB
Date Release Discovered	02/04/2026
Surface Owner	State

Incident Details	
<i>Please answer all the questions in this group.</i>	
Incident Type	Oil Release
Did this release result in a fire or is the result of a fire	No
Did this release result in any injuries	No
Has this release reached or does it have a reasonable probability of reaching a watercourse	No
Has this release endangered or does it have a reasonable probability of endangering public health	No
Has this release substantially damaged or will it substantially damage property or the environment	No
Is this release of a volume that is or may with reasonable probability be detrimental to fresh water	No

Nature and Volume of Release	
<i>Material(s) released, please answer all that apply below. Any calculations or specific justifications for the volumes provided should be attached to the follow-up C-141 submission.</i>	
Crude Oil Released (bbls) Details	Cause: Human Error Valve Crude Oil Released: 10 BBL Recovered: 10 BBL Lost: 0 BBL.
Produced Water Released (bbls) Details	Not answered.
Is the concentration of chloride in the produced water >10,000 mg/l	No
Condensate Released (bbls) Details	Not answered.
Natural Gas Vented (Mcf) Details	Not answered.
Natural Gas Flared (Mcf) Details	Not answered.
Other Released Details	Not answered.
Are there additional details for the questions above (i.e. any answer containing Other, Specify, Unknown, and/or Fire, or any negative lost amounts)	A ball valve on the LACT was slightly open that caused a release of 10 bbls of crude oil inside lined containment. All 10 bbls of oil were recovered.

Sante Fe Main Office
Phone: (505) 476-3441

General Information
Phone: (505) 629-6116

Online Phone Directory
<https://www.emnrd.nm.gov/ocd/contact-us>

State of New Mexico
Energy, Minerals and Natural Resources
Oil Conservation Division
1220 S. St Francis Dr.
Santa Fe, NM 87505

QUESTIONS, Page 2

Action 552537

QUESTIONS (continued)

Operator: EOG RESOURCES INC 5509 Champions Drive Midland, TX 79706	OGRID: 7377
	Action Number: 552537
	Action Type: [C-141] Initial C-141 (C-141-v-Initial)

QUESTIONS

Nature and Volume of Release (continued)	
Is this a gas only submission (i.e. only significant Mcf values reported)	No, according to supplied volumes this does not appear to be a "gas only" report.
Was this a major release as defined by Subsection A of 19.15.29.7 NMAC	No
Reasons why this would be considered a submission for a notification of a major release	<i>Unavailable.</i>
<i>With the implementation of the 19.15.27 NMAC (05/25/2021), venting and/or flaring of natural gas (i.e. gas only) are to be submitted on the C-129 form.</i>	

Initial Response

The responsible party must undertake the following actions immediately unless they could create a safety hazard that would result in injury.

The source of the release has been stopped	True
The impacted area has been secured to protect human health and the environment	True
Released materials have been contained via the use of berms or dikes, absorbent pads, or other containment devices	True
All free liquids and recoverable materials have been removed and managed appropriately	True
If all the actions described above have not been undertaken, explain why	na

Per Paragraph (4) of Subsection B of 19.15.29.8 NMAC the responsible party may commence remediation immediately after discovery of a release. If remediation has begun, please prepare and attach a narrative of actions to date in the follow-up C-141 submission. If remedial efforts have been successfully completed or if the release occurred within a lined containment area (see Subparagraph (a) of Paragraph (5) of Subsection A of 19.15.29.11 NMAC), please prepare and attach all information needed for closure evaluation in the follow-up C-141 submission.

I hereby certify that the information given above is true and complete to the best of my knowledge and understand that pursuant to OCD rules and regulations all operators are required to report and/or file certain release notifications and perform corrective actions for releases which may endanger public health or the environment. The acceptance of a C-141 report by the OCD does not relieve the operator of liability should their operations have failed to adequately investigate and remediate contamination that pose a threat to groundwater, surface water, human health or the environment. In addition, OCD acceptance of a C-141 report does not relieve the operator of responsibility for compliance with any other federal, state, or local laws and/or regulations.

I hereby agree and sign off to the above statement	Name: Todd Wells Title: Safety and Environmental Specialist Email: Todd_Wells@eogresources.com Date: 02/10/2026
--	--

Sante Fe Main Office
Phone: (505) 476-3441

General Information
Phone: (505) 629-6116

Online Phone Directory
<https://www.emnrd.nm.gov/ocd/contact-us>

**State of New Mexico
Energy, Minerals and Natural Resources
Oil Conservation Division
1220 S. St Francis Dr.
Santa Fe, NM 87505**

QUESTIONS, Page 3

Action 552537

QUESTIONS (continued)

Operator: EOG RESOURCES INC 5509 Champions Drive Midland, TX 79706	OGRID: 7377
	Action Number: 552537
	Action Type: [C-141] Initial C-141 (C-141-v-Initial)

QUESTIONS

Site Characterization

Please answer all the questions in this group (only required when seeking remediation plan approval and beyond). This information must be provided to the appropriate district office no later than 90 days after the release discovery date.

What is the shallowest depth to groundwater beneath the area affected by the release in feet below ground surface (ft bgs)	Not answered.
What method was used to determine the depth to ground water	Not answered.
Did this release impact groundwater or surface water	Not answered.
What is the minimum distance, between the closest lateral extents of the release and the following surface areas:	
A continuously flowing watercourse or any other significant watercourse	Not answered.
Any lakebed, sinkhole, or playa lake (measured from the ordinary high-water mark)	Not answered.
An occupied permanent residence, school, hospital, institution, or church	Not answered.
A spring or a private domestic fresh water well used by less than five households for domestic or stock watering purposes	Not answered.
Any other fresh water well or spring	Not answered.
Incorporated municipal boundaries or a defined municipal fresh water well field	Not answered.
A wetland	Not answered.
A subsurface mine	Not answered.
An (non-karst) unstable area	Not answered.
Categorize the risk of this well / site being in a karst geology	Not answered.
A 100-year floodplain	Not answered.
Did the release impact areas not on an exploration, development, production, or storage site	Not answered.

Remediation Plan

Please answer all the questions that apply or are indicated. This information must be provided to the appropriate district office no later than 90 days after the release discovery date.

Requesting a remediation plan approval with this submission	No
<i>The OCD recognizes that proposed remediation measures may have to be minimally adjusted in accordance with the physical realities encountered during remediation. If the responsible party has any need to significantly deviate from the remediation plan proposed, then it should consult with the division to determine if another remediation plan submission is required.</i>	

Sante Fe Main Office
Phone: (505) 476-3441

General Information
Phone: (505) 629-6116

Online Phone Directory
<https://www.emnrd.nm.gov/ocd/contact-us>

State of New Mexico
Energy, Minerals and Natural Resources
Oil Conservation Division
1220 S. St Francis Dr.
Santa Fe, NM 87505

CONDITIONS

Action 552537

CONDITIONS

Operator: EOG RESOURCES INC 5509 Champions Drive Midland, TX 79706	OGRID: 7377
	Action Number: 552537
	Action Type: [C-141] Initial C-141 (C-141-v-Initial)

CONDITIONS

Created By	Condition	Condition Date
scott.rodgers	None	2/10/2026

Sante Fe Main Office
Phone: (505) 476-3441

General Information
Phone: (505) 629-6116

Online Phone Directory
<https://www.emnrd.nm.gov/ocd/contact-us>

**State of New Mexico
Energy, Minerals and Natural Resources
Oil Conservation Division
1220 S. St Francis Dr.
Santa Fe, NM 87505**

QUESTIONS

Action 556701

QUESTIONS

Operator: EOG RESOURCES INC 5509 Champions Drive Midland, TX 79706	OGRID: 7377
	Action Number: 556701
	Action Type: [NOTIFY] Notification Of Liner Inspection (C-141L)

QUESTIONS

Prerequisites	
Incident ID (n#)	nAPP2604152281
Incident Name	NAPP2604152281 MAMBA 30 STATE SOUTH CTB @ FAPP2203935529
Incident Type	Oil Release
Incident Status	Initial C-141 Approved
Incident Facility	[fAPP2203935529] MAMBA 30 STATE SOUTH CTB

Location of Release Source	
Site Name	MAMBA 30 STATE SOUTH CTB
Date Release Discovered	02/04/2026
Surface Owner	State

Liner Inspection Event Information	
<i>Please answer all the questions in this group.</i>	
What is the liner inspection surface area in square feet	750
Have all the impacted materials been removed from the liner	Yes
Liner inspection date pursuant to Subparagraph (a) of Paragraph (5) of Subsection A of 19.15.29.11 NMAC	02/25/2026
Time liner inspection will commence	12:00 PM
Please provide any information necessary for observers to liner inspection	Inspection Information: Carmona Resources – 432-813-6823
Please provide any information necessary for navigation to liner inspection site	Driving Directions – 32.183897, -103.607483

Sante Fe Main Office
Phone: (505) 476-3441

General Information
Phone: (505) 629-6116

Online Phone Directory
<https://www.emnrd.nm.gov/ocd/contact-us>

State of New Mexico
Energy, Minerals and Natural Resources
Oil Conservation Division
1220 S. St Francis Dr.
Santa Fe, NM 87505

CONDITIONS

Action 556701

CONDITIONS

Operator: EOG RESOURCES INC 5509 Champions Drive Midland, TX 79706	OGRID: 7377
	Action Number: 556701
	Action Type: [NOTIFY] Notification Of Liner Inspection (C-141L)

CONDITIONS

Created By	Condition	Condition Date
todd wells	Failure to notify the OCD of liner inspections including any changes in date/time per the requirements of 19.15.29.11.A(5)(a)(ii) NMAC, may result in the inspection not being accepted.	2/23/2026

Conner Moehring

From: Conner Moehring
Sent: Monday, February 23, 2026 1:50 PM
To: eco@nmslo.gov
Cc: Todd Wells; Bill Smith; Mike Carmona; Stephen Reyes; Ivan Ramos
Subject: EOG - Momba 30 State South CTB - nAPP2604152281 - Liner Inspection Notification
Attachments: NMOCD - Liner Inspection Notification Confirmation - EOG - Momba 30 State South CTB.pdf

Good Afternoon,

On behalf of EOG Resources, we are submitting a liner inspection notification to the NMSLO that is in line with the NMOCD sampling notification. The liner inspection is to take place on February 25, 2026, at approximately 12:00 pm (Mountain Time). The site is located at 32.183897, -103.607483

Please call if you have any questions or need any additional information.

Conner R. Moehring
310 West Wall Street, Suite 500
Midland TX, 79701
M: 432-813-6823
cmoehring@carmonaresources.com
carmonaresources.com

APPENDIX C

CARMONA RESOURCES

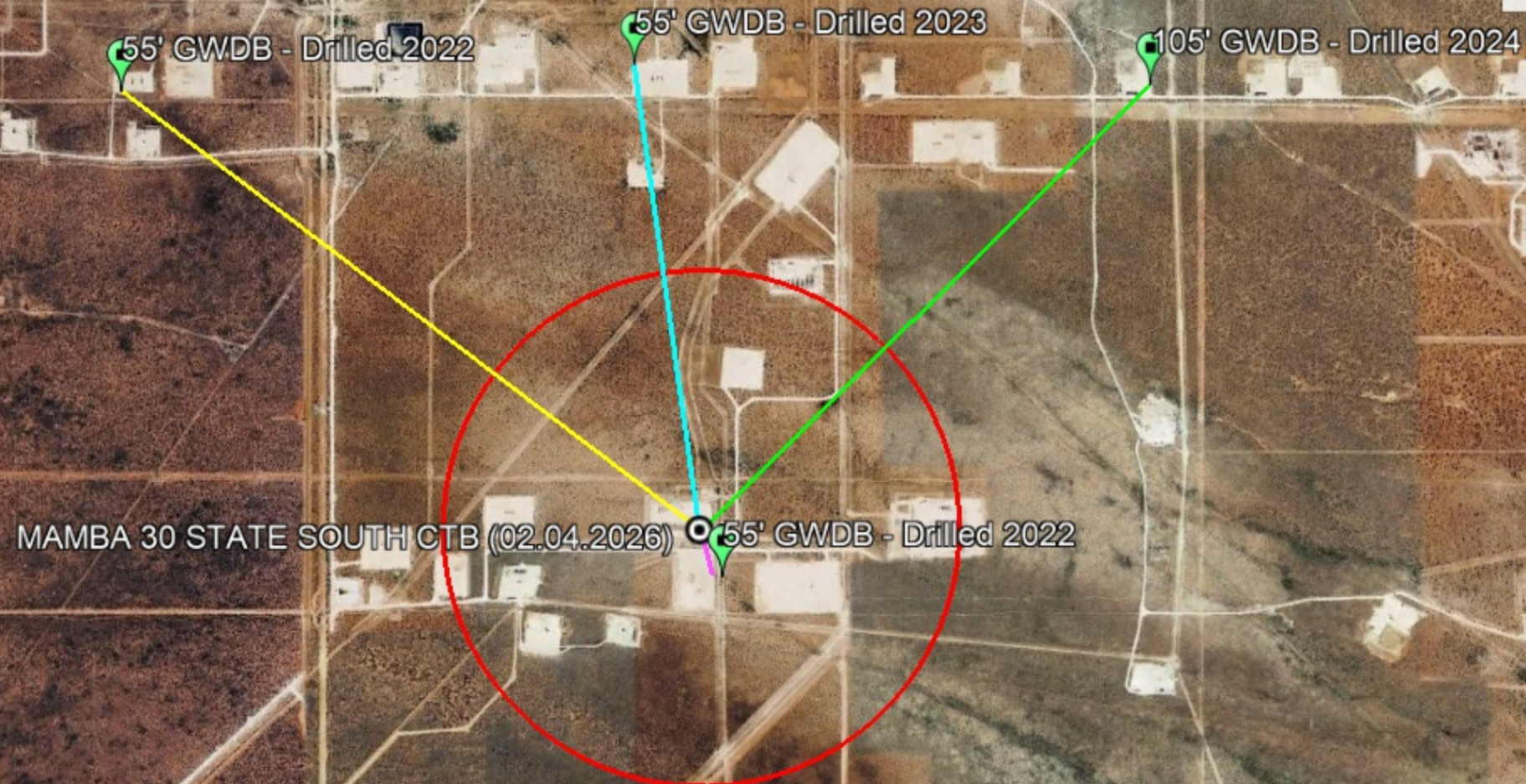


Nearest water well

EOG RESOURCES INC

Legend



- 0.09 Miles
- 0.50 Mile Radius
- 0.91 Miles
- 1.24 Miles
- 1.42 Miles
- Groundwater Determination Bore
- MAMBA 30 STATE SOUTH CTB (02.04.2026)




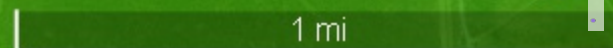
Low Karst

EOG RESOURCES INC

Legend

-  Low
-  MAMBA 30 STATE SOUTH CTB (02.04.2026)

MAMBA 30 STATE SOUTH CTB (02.04.2026) 





New Mexico Office of the State Engineer

Water Column/Average Depth to Water

(A CLW##### in the POD suffix indicates the POD has been replaced & no longer serves a water right file.) (R=POD has been replaced, O=orphaned, C=the file is closed)

(quarters are smallest to largest)

(meters)

(In feet)

POD Number	Code	Sub basin	County	Q64	Q16	Q4	Sec	Tws	Range	X	Y	Map	Distance	Well Depth	Depth Water	Water Column
C 04768 POD1		CUB	LE	SW	SW	SE	19	24S	33E	631047.5	3563110.7	●	1466	55		
C 02890		C	LE		NE	SE	29	24S	33E	633114.0	3562012.0 *	●	1870	500		
C 04844 POD1		CUB	LE	SW	SW	SE	20	24S	33E	632669.2	3563069.3	●	1979	105		
C 02312		CUB	LE	NW	NE	NW	05	25S	33E	632291.6	3559772.1	●	2145	150	90	60
C 04622 POD1		CUB	LE	SW	SW	SE	24	24S	32E	629436.4	3563006.8	●	2278			
C 02311		CUB	LE	NE	SW	NE	33	24S	33E	634391.1	3560877.7	●	3212	120	70	50
C 02310		CUB	LE	NE	SE	NE	33	24S	33E	634419.7	3560893.5	●	3236	120	70	50
C 04708 POD1		CUB	LE	NW	SW	SE	21	24S	33E	634149.2	3563262.8	●	3288	100		
C 02563		CUB	LE	NW	SE	NE	33	24S	33E	634639.0	3560923.0 *	●	3443	120		
C 02431		CUB	LE	SE	SE	SE	17	24S	33E	633175.0	3564728.0 *	●	3605	525	415	110
C 02432		CUB	LE	SE	SE	SE	17	24S	33E	633175.0	3564728.0 *	●	3605	640	415	225
C 02564		CUB	LE	NE	SE	NE	33	24S	33E	634839.0	3560923.0 *	●	3638	120		
C 02430		CUB	LE	SW	SW	SW	16	24S	33E	633377.0	3564732.0 *	●	3719	643	415	228

Average Depth to Water: **245 feet**

Minimum Depth: **70 feet**

Maximum Depth: **415 feet**

Record Count: 13

UTM Filters (in meters):

Easting: 631276.31

Northing: 3561662.65

Radius: 4000

* UTM location was derived from PLSS - see Help

The data is furnished by the NMOSE/ISC and is accepted by the recipient with the expressed understanding that the OSE/ISC make no warranties, expressed or implied, concerning the accuracy, completeness, reliability, usability, or suitability for any particular purpose of the data.



Project Name :	Mamba 30 State Com #744/745	Date :	Tuesday, August 9, 2022
Project No. :	1085	Sampler :	Lane Scarborough
Location :	Lea County, New Mexico	Driller :	Scarborough Drilling
Coordinates :	32.182522° , -103.607080°	Method :	Air Rotary
Elevation :	3,559		

Depth (ft.)	WL	Soil Description	Lithology	Depth (ft.)	WL	Soil Description	Lithology
0		(0'-1') - White well graded gravel, w/ <50% loose, coarse sand and caliche, no organics, dry (GW).		50		(50') - Light brown well graded gravel, w/ <50% loose, coarse sand and caliche, no organics, dry (GM).	
5		(5') - Light brown well graded gravel, w/ <50% loose, coarse sand and caliche, no organics, dry (GM).		55		(55') - Light brown well graded gravel, w/ <50% loose, coarse sand and caliche, no organics, dry (GM).	
10		(10') - Light brown well graded gravel, w/ <50% loose, coarse sand and caliche, no organics, dry (GM).		60			
15		(15') - Light brown well graded gravel, w/ <50% loose, coarse sand and caliche, no organics, dry (GM).		65			
20		(20') - Light brown well graded gravel, w/ <50% loose, coarse sand and caliche, no organics, dry (GM).		70			
25		(25') - Light brown well graded gravel, w/ <50% loose, coarse sand and caliche, no organics, dry (GM).		75			
30		(30') - Light brown well graded gravel, w/ <50% loose, coarse sand and caliche, no organics, dry (GM).		80			
35		(35') - Light brown well graded gravel, w/ <50% loose, coarse sand and caliche, no organics, dry (GM).		85			
40		(40') - Light brown well graded gravel, w/ <50% loose, coarse sand and caliche, no organics, dry (GM).		90			
45		(45') - Light brown well graded gravel, w/ <50% loose, coarse sand and caliche, no organics, dry (GM).		95			
50				105			

Comments : Boring terminated at 55' with no presence of groundwater or moisture.
Well measured 8/15/22 with no detection of groundwater



WELL RECORD & LOG

OFFICE OF THE STATE ENGINEER
www.ose.state.nm.us

Bell Lake

1. GENERAL AND WELL LOCATION	OSE POD NO. (WELL NO.) C-4768 POD1		WELL TAG ID NO.		OSE FILE NO(S) C04768			
	WELL OWNER NAME(S) Devon Energy Resources				PHONE (OPTIONAL)			
	WELL OWNER MAILING ADDRESS 205 E. Bender Road #150				CITY Hobbs	STATE NM	ZIP 88240	
	WELL LOCATION (FROM GPS)	DEGREES LATITUDE	MINUTES 11	SECONDS 48.93	N	* ACCURACY REQUIRED: ONE TENTH OF A SECOND		
	LONGITUDE	103	36	34.85	W	* DATUM REQUIRED: WGS 84		
DESCRIPTION RELATING WELL LOCATION TO STREET ADDRESS AND COMMON LANDMARKS - PLSS (SECTION, TOWNSHIP, RANGE) WHERE AVAILABLE								
2. DRILLING & CASING INFORMATION	LICENSE NO. 1833		NAME OF LICENSED DRILLER Jason Maley			NAME OF WELL DRILLING COMPANY Vision Resources		
	DRILLING STARTED 12-13-23	DRILLING ENDED 12-13-23	DEPTH OF COMPLETED WELL (FT) 55'	BORE HOLE DEPTH (FT) 55'	DEPTH WATER FIRST ENCOUNTERED (FT) Dry hole			
	COMPLETED WELL IS: <input type="checkbox"/> ARTESIAN *add Centralizer info below <input checked="" type="checkbox"/> DRY HOLE <input type="checkbox"/> SHALLOW (UNCONFINED)				STATIC WATER LEVEL IN COMPLETED WELL (FT) N/A	DATE STATIC MEASURED 12-16-23		
	DRILLING FLUID: <input checked="" type="checkbox"/> AIR <input type="checkbox"/> MUD				ADDITIVES - SPECIFY:			
	DRILLING METHOD: <input checked="" type="checkbox"/> ROTARY <input type="checkbox"/> HAMMER <input type="checkbox"/> CABLE TOOL <input type="checkbox"/> OTHER - SPECIFY:					CHECK HERE IF PITLESS ADAPTER IS INSTALLED <input type="checkbox"/>		
	DEPTH (feet bgl)		BORE HOLE DIAM (inches)	CASING MATERIAL AND/OR GRADE (include each casing string, and note sections of screen)	CASING CONNECTION TYPE (add coupling diameter)	CASING INSIDE DIAM. (inches)	CASING WALL THICKNESS (inches)	SLOT SIZE (inches)
	FROM	TO						
	0	45'	6"	2" PVC SCH40	Thread	2"	SCH40	N?A
	45'	55'	6"	2" PVC SCH40	Thread	2"	SCH40	.02
3. ANNULAR MATERIAL	DEPTH (feet bgl)		BORE HOLE DIAM. (inches)	LIST ANNULAR SEAL MATERIAL AND GRAVEL PACK SIZE-RANGE BY INTERVAL <i>*(if using Centralizers for Artesian wells- indicate the spacing below)</i>	AMOUNT (cubic feet)	METHOD OF PLACEMENT		
	FROM	TO						
				None Pulled and plugged				

OSE DTI JAN 12 2024 PM 1:51

FOR OSE INTERNAL USE

FILE NO. C-4768	POD NO. 1	TRN NO. 750189
LOCATION 24S. 33E. 19 334	WELL TAG ID NO. MA	PAGE 1 OF 2

WR-20 WELL RECORD & LOG (Version 09/22/2022)



WELL RECORD & LOG

OFFICE OF THE STATE ENGINEER

www.ose.state.nm.us

1. GENERAL AND WELL LOCATION	OSE POD NO. (WELL NO.) C-4844 - POD1		WELL TAG ID NO.		OSE FILE NO(S) C-4844			
	WELL OWNER NAME(S) Tap Rock Resources				PHONE (OPTIONAL)			
	WELL OWNER MAILING ADDRESS 523 Park Point DR. Suite 200				CITY Golden	STATE ZIP CO 80401		
	WELL LOCATION (FROM GPS)	DEGREES 32	MINUTES 11 ⁴⁰	SECONDS 46.94	* ACCURACY REQUIRED: ONE TENTH OF A SECOND			
	LONGITUDE -103	35 ⁵²	32.93	* DATUM REQUIRED: WGS 84				
DESCRIPTION RELATING WELL LOCATION TO STREET ADDRESS AND COMMON LANDMARKS - PLSS (SECTION, TOWNSHIP, RANGE) WHERE AVAILABLE								
2. DRILLING & CASING INFORMATION	LICENSE NO. 1833	NAME OF LICENSED DRILLER Jason Maley			NAME OF WELL DRILLING COMPANY Vision Resources			
	DRILLING STARTED 7-3-24	DRILLING ENDED 7-3-24	DEPTH OF COMPLETED WELL (FT) 105'	BORE HOLE DEPTH (FT) 105'	DEPTH WATER FIRST ENCOUNTERED (FT) N/A			
	COMPLETED WELL IS: <input type="checkbox"/> ARTESIAN *add Centralizer info below <input checked="" type="checkbox"/> DRY HOLE <input type="checkbox"/> SHALLOW (UNCONFINED)				STATIC WATER LEVEL IN COMPLETED WELL (FT) 0'	DATE STATIC MEASURED 7-3-24		
	DRILLING FLUID: <input checked="" type="checkbox"/> AIR <input type="checkbox"/> MUD ADDITIVES - SPECIFY:							
	DRILLING METHOD: <input checked="" type="checkbox"/> ROTARY <input type="checkbox"/> HAMMER <input type="checkbox"/> CABLE TOOL <input type="checkbox"/> OTHER - SPECIFY:					CHECK HERE IF PITLESS ADAPTER IS INSTALLED <input type="checkbox"/>		
	DEPTH (feet bgl)		BORE HOLE DIAM (inches)	CASING MATERIAL AND/OR GRADE (include each casing string, and note sections of screen)	CASING CONNECTION TYPE (add coupling diameter)	CASING INSIDE DIAM. (inches)	CASING WALL THICKNESS (inches)	
	FROM	TO					SLOT SIZE (inches)	
	0	95	6"	PVC 2" SCH40	Thread	2"	SCH40	N/A
	95	105	6"	PVC 2" SCH40	Thread	2"	SCH40	.02
3. ANNULAR MATERIAL	DEPTH (feet bgl)		BORE HOLE DIAM. (inches)	LIST ANNULAR SEAL MATERIAL AND GRAVEL PACK SIZE-RANGE BY INTERVAL <i>*(if using Centralizers for Artesian wells- indicate the spacing below)</i>	AMOUNT (cubic feet)	METHOD OF PLACEMENT		
	FROM	TO						
				None pulled and plugged				

OCT 01 08 1 2024 11:45

FOR OSE INTERNAL USE		WR-20 WELL RECORD & LOG (Version 09/22/2022)			
FILE NO. C-4844-POD1	POD NO. 1	TRN NO. 761316			
LOCATION Mon 24.33.20.334	WELL TAG ID NO. _____	PAGE 1 OF 2			

State Engineer



Well Office
1900 WEST SECOND STREET
ROSWELL, NM 88201

**STATE OF NEW MEXICO
OFFICE OF THE STATE ENGINEER**

Trn Nbr: 761316
File Nbr: C 04844
Well File Nbr: C 04844 POD1

Aug. 01, 2024

BILL RAMSEY
TAP ROCK RESOURCES
523 PARK POINT DR.SUITE 200
GOLDEN, CO 80401

Greetings:

The above numbered permit was issued in your name on 06/07/2024.

The Well Record was received in this office on 08/01/2024, stating that it had been completed on 07/03/2024, and was a dry well. The well is to be plugged according to 19.27.4.30 NMAC.

Please note that another well can be drilled under this permit if the well is completed and the well log filed on or before 06/07/2025.

If you have any questions, please feel free to contact us.

Sincerely,

A handwritten signature in blue ink that reads "Maret Thompson".

Maret Thompson
(575) 622-6521

drywell



WELL RECORD & LOG

OFFICE OF THE STATE ENGINEER

www.ose.state.nm.us

1. GENERAL AND WELL LOCATION	OSE POD NO. (WELL NO.) POD 1 (TW-1)		WELL TAG ID NO. N/A		OSE FILE NO(S). C-4622			
	WELL OWNER NAME(S) Devon Energy				PHONE (OPTIONAL) 575-748-1838			
	WELL OWNER MAILING ADDRESS 6488 7 Rivers Hwy				CITY Artesia		STATE NM	ZIP 88210
	WELL LOCATION (FROM GPS)	DEGREES		MINUTES	SECONDS	* ACCURACY REQUIRED: ONE TENTH OF A SECOND * DATUM REQUIRED: WGS 84		
		LATITUDE		32	11			
	LONGITUDE		103	37	36.41	W		
DESCRIPTION RELATING WELL LOCATION TO STREET ADDRESS AND COMMON LANDMARKS - PLSS (SECTION, TOWNSHIP, RANGE) WHERE AVAILABLE SW SW SE Sec.24 T24S R32S NMPM								

2. DRILLING & CASING INFORMATION	LICENSE NO. 1249		NAME OF LICENSED DRILLER Jackie D. Atkins			NAME OF WELL DRILLING COMPANY Atkins Engineering Associates, Inc.		
	DRILLING STARTED 6/7/2022		DRILLING ENDED 6/7/2022	DEPTH OF COMPLETED WELL (FT) Temporary Well		BORE HOLE DEPTH (FT) ±55	DEPTH WATER FIRST ENCOUNTERED (FT) N/A	
	COMPLETED WELL IS: <input type="checkbox"/> ARTESIAN <input checked="" type="checkbox"/> DRY HOLE <input type="checkbox"/> SHALLOW (UNCONFINED)					STATIC WATER LEVEL IN COMPLETED WELL (FT) N/A	DATE STATIC MEASURED 6/13/2022	
	DRILLING FLUID: <input type="checkbox"/> AIR <input type="checkbox"/> MUD ADDITIVES - SPECIFY:							
	DRILLING METHOD: <input type="checkbox"/> ROTARY <input type="checkbox"/> HAMMER <input type="checkbox"/> CABLE TOOL <input checked="" type="checkbox"/> OTHER - SPECIFY: Hollow Stem Auger						CHECK HERE IF PITLESS ADAPTER IS INSTALLED <input type="checkbox"/>	
	DEPTH (feet bgl)		BORE HOLE DIAM (inches)	CASING MATERIAL AND/OR GRADE (include each casing string, and note sections of screen)	CASING CONNECTION TYPE (add coupling diameter)	CASING INSIDE DIAM. (inches)	CASING WALL THICKNESS (inches)	SLOT SIZE (inches)
	FROM	TO						
0	55	±6.5	Boring-HSA	--	--	--	--	

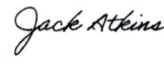
3. ANNULAR MATERIAL	DEPTH (feet bgl)		BORE HOLE DIAM. (inches)	LIST ANNULAR SEAL MATERIAL AND GRAVEL PACK SIZE-RANGE BY INTERVAL	AMOUNT (cubic feet)	METHOD OF PLACEMENT
	FROM	TO				

OSE DTI JUN 16 2022 PM 3:03

FOR OSE INTERNAL USE				WR-20 WELL RECORD & LOG (Version 01/28/2022)			
FILE NO. C-4622-POD 1		POD NO. 1		TRN NO. 726166			
LOCATION 24.32.24.334			WELL TAG ID NO. _____			PAGE 1 OF 2	

4. HYDROGEOLOGIC LOG OF WELL	DEPTH (feet bgl)		THICKNESS (feet)	COLOR AND TYPE OF MATERIAL ENCOUNTERED - INCLUDE WATER-BEARING CAVITIES OR FRACTURE ZONES (attach supplemental sheets to fully describe all units)	WATER BEARING? (YES / NO)	ESTIMATED YIELD FOR WATER-BEARING ZONES (gpm)
	FROM	TO				
	0	4	4	Sand, Fine-grained, poorly graded, 2.5 YR 3/6, Dark Red	Y ✓ N	
	4	13	9	Caliche, with Fine-grained sand, 7.5 YR 7/4, Pink	Y ✓ N	
	13	34	21	Sand, Fine-grained, poorly graded, with Caliche, 7.5 YR 7/6, Reddish Yellow	Y ✓ N	
	34	55	21	Sand, Fine-grained, poorly graded, unconsolidated, 7.5 YR 7/6, Reddish Yellow	Y ✓ N	
					Y N	
					Y N	
					Y N	
					Y N	
					Y N	
					Y N	
					Y N	
					Y N	
					Y N	
					Y N	
					Y N	
					Y N	
					Y N	
					Y N	
					Y N	
					Y N	
					Y N	
METHOD USED TO ESTIMATE YIELD OF WATER-BEARING STRATA: <input type="checkbox"/> PUMP <input type="checkbox"/> AIR LIFT <input type="checkbox"/> BAILER <input type="checkbox"/> OTHER - SPECIFY:					TOTAL ESTIMATED WELL YIELD (gpm): 0.00	

5. TEST; RIG SUPERVISION	WELL TEST	TEST RESULTS - ATTACH A COPY OF DATA COLLECTED DURING WELL TESTING, INCLUDING DISCHARGE METHOD, START TIME, END TIME, AND A TABLE SHOWING DISCHARGE AND DRAWDOWN OVER THE TESTING PERIOD.
		MISCELLANEOUS INFORMATION: Temporary well material removed and soil boring backfilled using drill cuttings from total depth to ten feet below ground surface(bgs), then hydrated bentonite chips ten feet bgs to surface. 15 Bell Lake 24 Fed 4 OSE DT JUN 16 2022 PM 3:09
	PRINT NAME(S) OF DRILL RIG SUPERVISOR(S) THAT PROVIDED ONSITE SUPERVISION OF WELL CONSTRUCTION OTHER THAN LICENSEE: Shane Eldridge, Cameron Pruitt	

6. SIGNATURE	THE UNDERSIGNED HEREBY CERTIFIES THAT, TO THE BEST OF HIS OR HER KNOWLEDGE AND BELIEF, THE FOREGOING IS A TRUE AND CORRECT RECORD OF THE ABOVE DESCRIBED HOLE AND THAT HE OR SHE WILL FILE THIS WELL RECORD WITH THE STATE ENGINEER AND THE PERMIT HOLDER WITHIN 30 DAYS AFTER COMPLETION OF WELL DRILLING:	
		 Jackie D. Atkins
	SIGNATURE OF DRILLER / PRINT SIGNEE NAME	DATE

FOR OSE INTERNAL USE		WR-20 WELL RECORD & LOG (Version 01/28/2022)	
FILE NO. <u>C-4622-POD 1</u>	POD NO. <u>1</u>	TRN NO. <u>726166</u>	
LOCATION <u>24.32.24.334</u>	WELL TAG ID NO. <u> </u>	PAGE 2 OF 2	

Mike A. Hamman, P.E.
State Engineer



Roswell Office
1900 WEST SECOND STREET
ROSWELL, NM 88201

**STATE OF NEW MEXICO
OFFICE OF THE STATE ENGINEER**

Trn Nbr: 726166
File Nbr: C 04622
Well File Nbr: C 04622 POD1

Jun. 16, 2022

DALE WOODALL
DEVON ENERGY
6488 7 RIVERS HWY
ARTESIA, NM 88210

Greetings:

The above numbered permit was issued in your name on 05/23/2022.

The Well Record was received in this office on 06/16/2022, stating that it had been completed on 06/07/2022, and was a dry well. The well is to be plugged according to 19.27.4.30 NMAC.

Please note that another well can be drilled under this permit if the well is completed and the well log filed on or before 05/23/2023.

If you have any questions, please feel free to contact us.

Sincerely,

A handwritten signature in blue ink, appearing to read "Maret Amaral".

Maret Amaral
(575) 622-6521

drywell



2904 W 2nd St.
Roswell, NM 88201
voice: 575.624.2420
fax: 575.624.2421
www.atkinseng.com

June 8, 2022

DII-NMOSE
1900 W 2nd Street
Roswell, NM 88201

Hand Delivered to the DII Office of the State Engineer

Re: Well Record C-4622 Pod1 at Bell Lake 24 Fed 4

To whom it may concern:

Attached please find a well log & record and a plugging record, in duplicate, for a one (1) soil borings, C-4622 Pod1.

If you have any questions, please contact me at 575.499.9244 or lucas@atkinseng.com.

Sincerely,

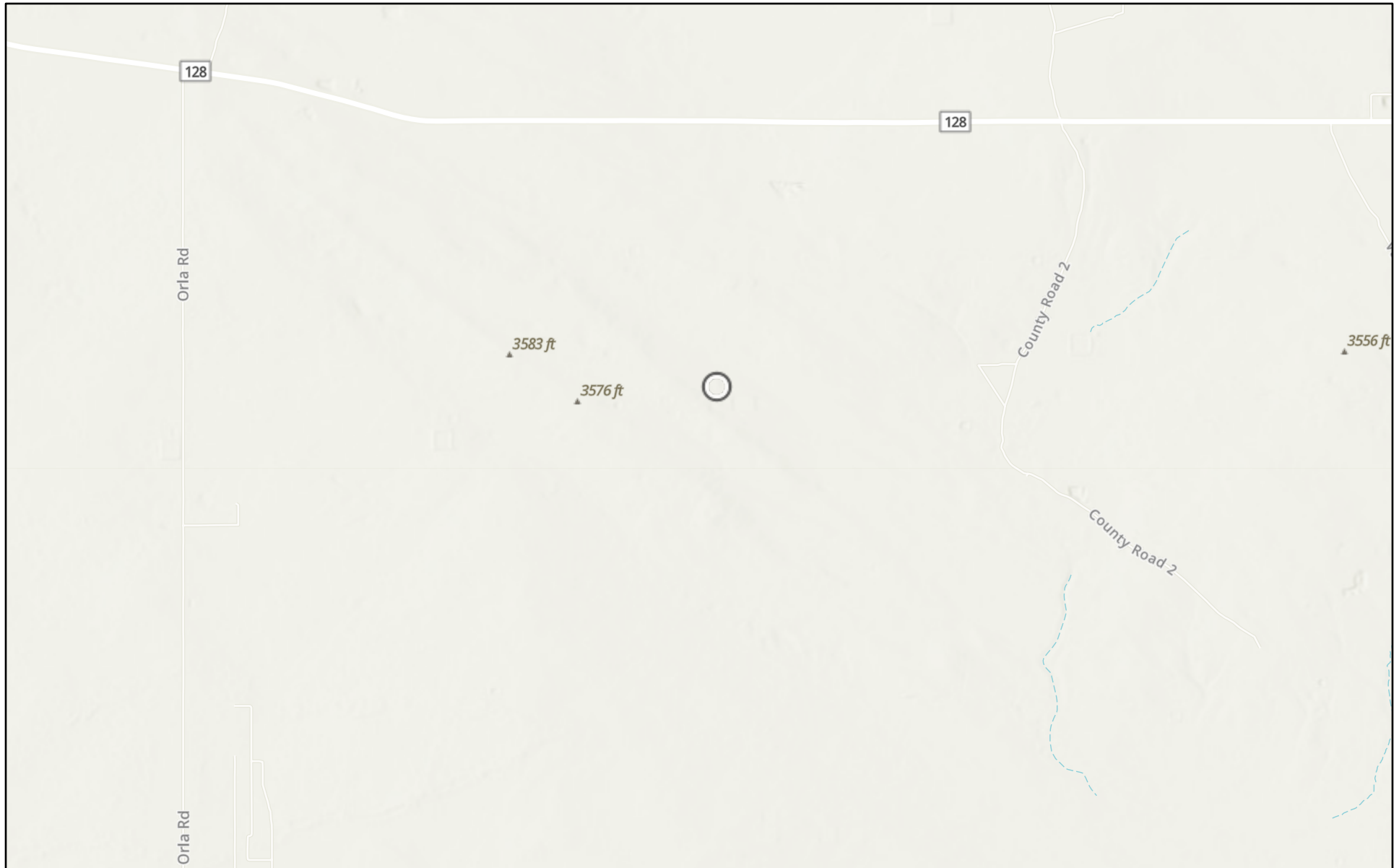
A handwritten signature in black ink that reads "Lucas Middleton".

Lucas Middleton

Enclosures: as noted above

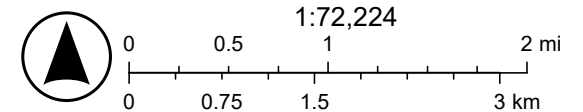
QSE DIT JUN 16 2022 PM 3:09

MAMBA 30 STATE SOUTH CTB (02.04.2026)



2/23/2026

World_Hillshade



Esri, NASA, NGA, USGS, FEMA, Sources: Esri, TomTom, Garmin, FAO, NOAA, USGS, (c) OpenStreetMap contributors, and the GIS User

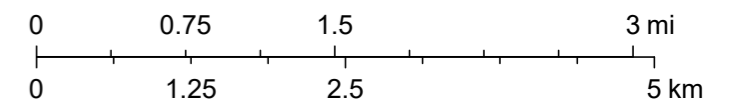
MAMBA 30 STATE SOUTH CTB (02.04.2026)



2/23/2026, 10:32:35 AM

- OSW Water Bodys
- OSE Streams

1:72,224



Esri, NASA, NGA, USGS, FEMA, Sources: Esri, TomTom, Garmin, FAO, NOAA, USGS, © OpenStreetMap contributors, and the GIS User Community, NM OSE

APPENDIX D

CARMONA RESOURCES



IPaC resource list

This report is an automatically generated list of species and other resources such as critical habitat (collectively referred to as *trust resources*) under the U.S. Fish and Wildlife Service's (USFWS) jurisdiction that are known or expected to be on or near the project area referenced below. The list may also include trust resources that occur outside of the project area, but that could potentially be directly or indirectly affected by activities in the project area. However, determining the likelihood and extent of effects a project may have on trust resources typically requires gathering additional site-specific (e.g., vegetation/species surveys) and project-specific (e.g., magnitude and timing of proposed activities) information.

Below is a summary of the project information you provided and contact information for the USFWS office(s) with jurisdiction in the defined project area. Please read the introduction to each section that follows (Endangered Species, Migratory Birds, USFWS Facilities, and NWI Wetlands) for additional information applicable to the trust resources addressed in that section.

Location

Lea County, New Mexico



Local office

New Mexico Ecological Services Field Office

☎ (505) 346-2525

📠 (505) 346-2542

2105 Osuna Road Ne
Albuquerque, NM 87113-1001

NOT FOR CONSULTATION

Endangered species

This resource list is for informational purposes only and does not constitute an analysis of project level impacts.

The primary information used to generate this list is the known or expected range of each species. Additional areas of influence (AOI) for species are also considered. An AOI includes areas outside of the species range if the species could be indirectly affected by activities in that area (e.g., placing a dam upstream of a fish population even if that fish does not occur at the dam site, may indirectly impact the species by reducing or eliminating water flow downstream). Because species can move, and site conditions can change, the species on this list are not guaranteed to be found on or near the project area. To fully determine any potential effects to species, additional site-specific and project-specific information is often required.

Section 7 of the Endangered Species Act **requires** Federal agencies to "request of the Secretary information whether any species which is listed or proposed to be listed may be present in the area of such proposed action" for any project that is conducted, permitted, funded, or licensed by any Federal agency. A letter from the local office and a species list which fulfills this requirement can **only** be obtained by requesting an official species list from either the Regulatory Review section in IPaC (see directions below) or from the local field office directly.

For project evaluations that require USFWS concurrence/review, please return to the IPaC website and request an official species list by doing the following:

1. Draw the project location and click CONTINUE.
2. Click DEFINE PROJECT.
3. Log in (if directed to do so).
4. Provide a name and description for your project.
5. Click REQUEST SPECIES LIST.

Listed species¹ and their critical habitats are managed by the [Ecological Services Program](#) of the U.S. Fish and Wildlife Service (USFWS) and the fisheries division of the National Oceanic and Atmospheric Administration (NOAA Fisheries²).

Species and critical habitats under the sole responsibility of NOAA Fisheries are **not** shown on this list. Please contact [NOAA Fisheries](#) for [species under their jurisdiction](#).

1. Species listed under the [Endangered Species Act](#) are threatened or endangered; IPaC also shows species that are candidates, or proposed, for listing. See the [listing status page](#) for more information. IPaC only shows species that are regulated by USFWS (see FAQ).
2. [NOAA Fisheries](#), also known as the National Marine Fisheries Service (NMFS), is an office of the National Oceanic and Atmospheric Administration within the Department of Commerce.

The following species are potentially affected by activities in this location:

Birds

NAME	STATUS
Northern Aplomado Falcon <i>Falco femoralis septentrionalis</i> No critical habitat has been designated for this species. https://ecos.fws.gov/ecp/species/1923	EXPN

Insects

NAME	STATUS
Monarch Butterfly <i>Danaus plexippus</i> Wherever found There is proposed critical habitat for this species. Your location does not overlap the critical habitat. https://ecos.fws.gov/ecp/species/9743	Proposed Threatened

Critical habitats

Potential effects to critical habitat(s) in this location must be analyzed along with the endangered species themselves.

There are no critical habitats at this location.

You are still required to determine if your project(s) may have effects on all above listed species.

Bald & Golden Eagles

Bald and Golden Eagles are protected under the Bald and Golden Eagle Protection Act ² and the Migratory Bird Treaty Act (MBTA) ¹. Any person or organization who plans or conducts activities that may result in impacts to Bald or Golden Eagles, or their nests, should follow appropriate regulations and implement required avoidance and minimization measures, as described in the various links on this page.

The [data](#) in this location indicates that no eagles have been observed in this area. This does not mean eagles are not present in your project area, especially if the area is difficult to survey. Please review the 'Steps to Take When No Results Are Returned' section of the [Supplemental Information on Migratory Birds and Eagles document](#) to determine if your project is in a poorly surveyed area. If it is, you may need to rely on other resources to determine if eagles may be present (e.g. your local FWS field office, state surveys, your own surveys).

Additional information can be found using the following links:

- Eagle Management <https://www.fws.gov/program/eagle-management>
- Measures for avoiding and minimizing impacts to birds <https://www.fws.gov/library/collections/avoiding-and-minimizing-incident-take-migratory-birds>
- Nationwide avoidance and minimization measures for birds <https://www.fws.gov/sites/default/files/documents/nationwide-standard-conservation-measures.pdf>
- Supplemental Information for Migratory Birds and Eagles in IPaC <https://www.fws.gov/media/supplemental-information-migratory-birds-and-bald-and-golden-eagles-may-occur-project-action>

Bald & Golden Eagles FAQs

What does IPaC use to generate the potential presence of bald and golden eagles in my specified location?

The potential for eagle presence is derived from data provided by the [Avian Knowledge Network \(AKN\)](#). The AKN data is based on a growing collection of [survey, banding, and citizen science datasets](#) and is queried and filtered to return a list of those birds reported as occurring in the 10km grid cell(s) which your project intersects, and that have been identified as warranting special attention because they are an eagle ([Bald and Golden Eagle Protection Act](#) requirements may apply).

Proper interpretation and use of your eagle report

On the graphs provided, please look carefully at the survey effort (indicated by the black vertical line) and for the existence of the "no data" indicator (a red horizontal line). A high survey effort is the key component. If the survey effort is high, then the probability of presence score can be viewed as more dependable. In contrast, a low survey effort line or no data line (red horizontal) means a lack of data and, therefore, a lack of certainty about presence of the species. This list is not perfect; it is simply a starting point for identifying what birds have the potential to be in your project area, when they might be there, and if they might be breeding (which means nests might be present). The list and associated information help you know what to look for to confirm presence and helps guide you in knowing when to implement avoidance and minimization measures to eliminate or reduce potential impacts from your project activities or get the appropriate permits should presence be confirmed.

How do I know if eagles are breeding, wintering, or migrating in my area?

To see what part of a particular bird's range your project area falls within (i.e. breeding, wintering, migrating, or resident), you may query your location using the [RAIL Tool](#) and view the range maps provided for birds in your area at the bottom of the profiles provided for each bird in your results. If an eagle on your IPaC migratory bird species list has a breeding season associated with it (indicated by yellow vertical bars on the phenology graph in your "IPaC PROBABILITY OF PRESENCE SUMMARY" at the top of your results list), there may be nests present at some point within the timeframe specified. If "Breeds elsewhere" is indicated, then the bird likely does not breed in your project area.

Interpreting the Probability of Presence Graphs

Each green bar represents the bird's relative probability of presence in the 10km grid cell(s) your project overlaps during a particular week of the year. A taller bar indicates a higher probability of species presence. The survey effort can be used to establish a level of confidence in the presence score.

How is the probability of presence score calculated? The calculation is done in three steps:

The probability of presence for each week is calculated as the number of survey events in the week where the species was detected divided by the total number of survey events for that week. For example, if in week 12 there were 20 survey events and the Spotted Towhee was found in 5 of them, the probability of presence of the Spotted Towhee in week 12 is 0.25.

To properly present the pattern of presence across the year, the relative probability of presence is calculated. This is the probability of presence divided by the maximum probability of presence across all weeks. For example, imagine the probability of presence in week 20 for the Spotted Towhee is 0.05, and that the probability of presence at week 12 (0.25) is the maximum of any week of the year. The relative probability of presence on week 12 is $0.25/0.25 = 1$; at week 20 it is $0.05/0.25 = 0.2$.

The relative probability of presence calculated in the previous step undergoes a statistical conversion so that all possible values fall between 0 and 10, inclusive. This is the probability of presence score.

Breeding Season ()

Yellow bars denote a very liberal estimate of the time-frame inside which the bird breeds across its entire range. If there are no yellow bars shown for a bird, it does not breed in your project area.

Survey Effort ()

Vertical black lines superimposed on probability of presence bars indicate the number of surveys performed for that species in the 10km grid cell(s) your project area overlaps.

No Data ()

A week is marked as having no data if there were no survey events for that week.

Survey Timeframe

Surveys from only the last 10 years are used in order to ensure delivery of currently relevant information. The exception to this is areas off the Atlantic coast, where bird returns are based on all years of available data, since data in these areas is currently much more sparse.

Migratory birds

The Migratory Bird Treaty Act (MBTA) ¹ prohibits the take (including killing, capturing, selling, trading, and transport) of protected migratory bird species without prior authorization by the Department of Interior U.S. Fish and Wildlife Service (Service).

1. The [Migratory Birds Treaty Act](#) of 1918.
2. The [Bald and Golden Eagle Protection Act](#) of 1940.

Additional information can be found using the following links:

- Eagle Management <https://www.fws.gov/program/eagle-management>
- Measures for avoiding and minimizing impacts to birds <https://www.fws.gov/library/collections/avoiding-and-minimizing-incident-take-migratory-birds>
- Nationwide avoidance and minimization measures for birds
- Supplemental Information for Migratory Birds and Eagles in IPaC <https://www.fws.gov/media/supplemental-information-migratory-birds-and-bald-and-golden-eagles-may-occur-project-action>

Measures for Proactively Minimizing Migratory Bird Impacts

Your IPaC Migratory Bird list showcases [birds of concern](#), including [Birds of Conservation Concern \(BCC\)](#), in your project location. This is not a comprehensive list of all birds found in your project area. However, you can help proactively minimize significant impacts to all birds at your project location by implementing the measures in the [Nationwide avoidance and minimization measures for birds](#) document, and any other project-specific avoidance and minimization measures suggested at the link [Measures for avoiding and minimizing impacts to birds](#) for the birds of concern on your list below.

Ensure Your Migratory Bird List is Accurate and Complete

If your project area is in a poorly surveyed area, your list may not be complete and you may need to rely on other resources to determine what species may be present (e.g. your local FWS field office, state surveys, your own surveys). Please review the [Supplemental Information on Migratory Birds and Eagles document](#), to help you properly interpret the report for your specified location, including determining if there is sufficient data to ensure your list is accurate.

For guidance on when to schedule activities or implement avoidance and minimization measures to reduce impacts to migratory birds on your list, see the "Probability of Presence Summary" below to see when these birds are most likely to be present and breeding in your project area.

Review the FAQs

The FAQs below provide important additional information and resources.

NAME	BREEDING SEASON
Chestnut-collared Longspur <i>Calcarius ornatus</i> This is a Bird of Conservation Concern (BCC) throughout its range in the continental USA and Alaska.	Breeds May 1 to Aug 10
Ferruginous Hawk <i>Buteo regalis</i> This is a Bird of Conservation Concern (BCC) only in particular Bird Conservation Regions (BCRs) in the continental USA https://ecos.fws.gov/ecp/species/6038	Breeds Mar 15 to Aug 15
Northern Harrier <i>Circus hudsonius</i> This is a Bird of Conservation Concern (BCC) only in particular Bird Conservation Regions (BCRs) in the continental USA https://ecos.fws.gov/ecp/species/8350	Breeds Apr 1 to Sep 15
Pectoral Sandpiper <i>Calidris melanotos</i> This is a Bird of Conservation Concern (BCC) throughout its range in the continental USA and Alaska.	Breeds elsewhere
Sprague's Pipit <i>Anthus spragueii</i> This is a Bird of Conservation Concern (BCC) throughout its range in the continental USA and Alaska. https://ecos.fws.gov/ecp/species/8964	Breeds elsewhere

Probability of Presence Summary

The graphs below provide our best understanding of when birds of concern are most likely to be present in your project area. This information can be used to tailor and schedule your project activities to avoid or minimize impacts to birds. Please make sure you read ["Supplemental Information on Migratory Birds and Eagles"](#), specifically the FAQ section titled "Proper Interpretation and Use of Your Migratory Bird Report" before using or attempting to interpret this report.

Probability of Presence (■)

Each green bar represents the bird's relative probability of presence in the 10km grid cell(s) your project overlaps during a particular week of the year. (A year is represented as 12 4-week months.) A taller bar indicates a higher probability of species presence. The survey effort (see below) can be used to establish a level of confidence in the presence score. One can have higher confidence in the presence score if the corresponding survey effort is also high.

How is the probability of presence score calculated? The calculation is done in three steps:

1. The probability of presence for each week is calculated as the number of survey events in the week where the species was detected divided by the total number of survey events for that week. For example, if in week 12 there were 20 survey events and the Spotted Towhee was found in 5 of them, the probability of presence of the Spotted Towhee in week 12 is 0.25.
2. To properly present the pattern of presence across the year, the relative probability of presence is calculated. This is the probability of presence divided by the maximum probability of presence across all weeks. For example, imagine the probability of presence in week 20 for the Spotted Towhee is 0.05, and that the probability of presence at week 12 (0.25) is the maximum of any week of the year. The relative probability of presence on week 12 is 0.25/0.25 = 1; at week 20 it is 0.05/0.25 = 0.2.
3. The relative probability of presence calculated in the previous step undergoes a statistical conversion so that all possible values fall between 0 and 10, inclusive. This is the probability of presence score.

To see a bar's probability of presence score, simply hover your mouse cursor over the bar.

Breeding Season (■)

Yellow bars denote a very liberal estimate of the time-frame inside which the bird breeds across its entire range. If there are no yellow bars shown for a bird, it does not breed in your project area.

Survey Effort (|)

Vertical black lines superimposed on probability of presence bars indicate the number of surveys performed for that species in the 10km grid cell(s) your project area overlaps. The number of surveys is expressed as a range, for example, 33 to 64 surveys.

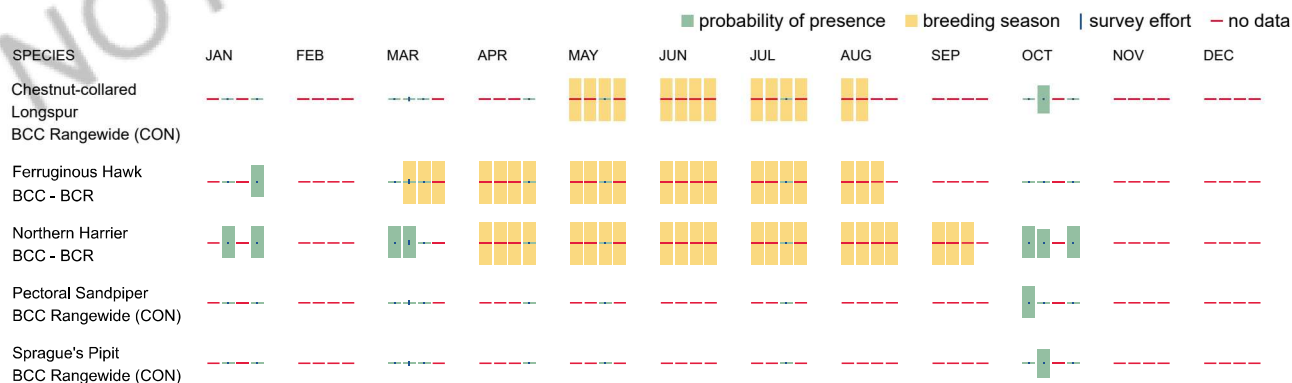
To see a bar's survey effort range, simply hover your mouse cursor over the bar.

No Data (-)

A week is marked as having no data if there were no survey events for that week.

Survey Timeframe

Surveys from only the last 10 years are used in order to ensure delivery of currently relevant information. The exception to this is areas off the Atlantic coast, where bird returns are based on all years of available data, since data in these areas is currently much more sparse.



Migratory Bird FAQs

Tell me more about avoidance and minimization measures I can implement to avoid or minimize impacts to migratory birds.

[Nationwide Avoidance & Minimization Measures for Birds](#) describes measures that can help avoid and minimize impacts to all birds at any location year-round. When birds may be breeding in the area, identifying the locations of any active nests and avoiding their destruction is one of the most effective ways to minimize impacts. To see when birds are most likely to occur and breed in your project area, view the Probability of Presence Summary. [Additional measures](#) or [permits](#) may be advisable depending on the type of activity you are conducting and the type of infrastructure or bird species present on your project site.

What does IPaC use to generate the list of migratory birds that potentially occur in my specified location?

The Migratory Bird Resource List is comprised of [Birds of Conservation Concern \(BCC\)](#) and other species that may warrant special attention in your project location, such as those listed under the Endangered Species Act or the [Bald and Golden Eagle Protection Act](#) and those species marked as "Vulnerable". See the FAQ "What are the levels of concern for migratory birds?" for more information on the levels of concern covered in the IPaC migratory bird species list.

The migratory bird list generated for your project is derived from data provided by the [Avian Knowledge Network \(AKN\)](#). The AKN data is based on a growing collection of [survey, banding, and citizen science datasets](#) and is queried and filtered to return a list of those birds reported as occurring in the 10km grid cell(s) with which your project intersects. These species have been identified as warranting special attention because they are BCC species in that area, an eagle ([Bald and Golden Eagle Protection Act](#) requirements may apply), or a species that has a particular vulnerability to offshore activities or development.

Again, the Migratory Bird Resource list includes only a subset of birds that may occur in your project area. It is not representative of all birds that may occur in your project area. To get a list of all birds potentially present in your project area, and to verify survey effort when no results present, please visit the [Rapid Avian Information Locator \(RAIL\) Tool](#).

Why are subspecies showing up on my list?

Subspecies profiles are included on the list of species present in your project area because observations in the AKN for **the species** are being detected. If the species are present, that means that the subspecies may also be present. If a subspecies shows up on your list, you may need to rely on other resources to determine if that subspecies may be present (e.g. your local FWS field office, state surveys, your own surveys).

What does IPaC use to generate the probability of presence graphs for the migratory birds potentially occurring in my specified location?

The probability of presence graphs associated with your migratory bird list are based on data provided by the [Avian Knowledge Network \(AKN\)](#). This data is derived from a growing collection of [survey, banding, and citizen science datasets](#).

Probability of presence data is continuously being updated as new and better information becomes available. To learn more about how the probability of presence graphs are produced and how to interpret them, go to the Probability of Presence Summary and then click on the "Tell me about these graphs" link.

How do I know if a bird is breeding, wintering, or migrating in my area?

To see what part of a particular bird's range your project area falls within (i.e. breeding, wintering, migrating, or resident), you may query your location using the [RAIL Tool](#) and view the range maps provided for birds in your area at the bottom of the profiles provided for each bird in your results. If a bird on your IPaC migratory bird species list has a breeding season associated with it (indicated by yellow vertical bars on the phenology graph in your "IPaC PROBABILITY OF PRESENCE SUMMARY" at the top of your results list), there may be nests present at some point within the timeframe specified. If "Breeds elsewhere" is indicated, then the bird likely does not breed in your project area.

What are the levels of concern for migratory birds?

Migratory birds delivered through IPaC fall into the following distinct categories of concern:

1. "BCC Rangeland" birds are [Birds of Conservation Concern \(BCC\)](#) that are of concern throughout their range anywhere within the USA (including Hawaii, the Pacific Islands, Puerto Rico, and the Virgin Islands);
2. "BCC - BCR" birds are BCCs that are of concern only in particular Bird Conservation Regions (BCRs) in the continental USA; and
3. "Non-BCC - Vulnerable" birds are not BCC species in your project area, but appear on your list either because of the [Bald and Golden Eagle Protection Act](#) requirements (for eagles) or (for non-eagles) potential susceptibilities in offshore areas from certain types of development or activities (e.g. offshore energy development or longline fishing).

Although it is important to avoid and minimize impacts to all birds, efforts should be made, in particular, to avoid and minimize impacts to the birds on this list, especially BCC species. For more information on avoidance and minimization measures you can implement to help avoid and minimize migratory bird impacts, please see the FAQ "Tell me more about avoidance and minimization measures I can implement to avoid or minimize impacts to migratory birds".

Details about birds that are potentially affected by offshore projects

For additional details about the relative occurrence and abundance of both individual bird species and groups of bird species within your project area off the Atlantic Coast, please visit the [Northeast Ocean Data Portal](#). The Portal also offers data and information about other taxa besides birds that may be helpful to you in your project review. Alternately, you may download the bird model results files underlying the portal maps through the [NOAA NCCOS Integrative Statistical Modeling and Predictive Mapping of Marine Bird Distributions and Abundance on the Atlantic Outer Continental Shelf](#) project webpage.

Proper interpretation and use of your migratory bird report

The migratory bird list generated is not a list of all birds in your project area, only a subset of birds of priority concern. To learn more about how your list is generated and see options for identifying what other birds may be in your project area, please see the FAQ "What does IPaC use to generate the migratory birds potentially occurring in my specified location". Please be aware this report provides the "probability of presence" of birds within the 10 km grid cell(s) that overlap your project; not your exact project footprint. On the graphs provided, please look carefully at the survey effort (indicated by the black vertical line) and for the existence of the "no data" indicator (a red horizontal line). A high survey effort is the key component. If the survey effort is high, then the probability of presence score can be viewed as more dependable. In contrast, a low survey effort bar or no data bar means a lack of data and, therefore, a lack of certainty about presence of the species. This list does not represent all birds present in your project area. It is simply a starting point for identifying what birds of concern have the potential to be in your project area, when they might be there, and if they might be breeding (which means nests might be present). The list and associated information help you know what to look for to confirm presence and helps guide implementation of avoidance and minimization measures to eliminate or reduce potential impacts from your project activities, should presence be confirmed. To learn more about avoidance and minimization measures, visit the FAQ "Tell me about avoidance and minimization measures I can implement to avoid or minimize impacts to migratory birds".

Interpreting the Probability of Presence Graphs

Each green bar represents the bird's relative probability of presence in the 10km grid cell(s) your project overlaps during a particular week of the year. A taller bar indicates a higher probability of species presence. The survey effort can be used to establish a level of confidence in the presence score.

How is the probability of presence score calculated? The calculation is done in three steps:

The probability of presence for each week is calculated as the number of survey events in the week where the species was detected divided by the total number of survey events for that week. For example, if in week 12 there were 20 survey events and the Spotted Towhee was found in 5 of them, the probability of presence of the Spotted Towhee in week 12 is 0.25.

To properly present the pattern of presence across the year, the relative probability of presence is calculated. This is the probability of presence divided by the maximum probability of presence across all weeks. For example, imagine the probability of presence in week 20 for the Spotted Towhee is 0.05, and that the probability of presence at week 12 (0.25) is the maximum of any week of the year. The relative probability of presence on week 12 is $0.25/0.25 = 1$; at week 20 it is $0.05/0.25 = 0.2$.

The relative probability of presence calculated in the previous step undergoes a statistical conversion so that all possible values fall between 0 and 10, inclusive. This is the probability of presence score.

Breeding Season ()

Yellow bars denote a very liberal estimate of the time-frame inside which the bird breeds across its entire range. If there are no yellow bars shown for a bird, it does not breed in your project area.

Survey Effort ()

Vertical black lines superimposed on probability of presence bars indicate the number of surveys performed for that species in the 10km grid cell(s) your project area overlaps.

No Data ()

A week is marked as having no data if there were no survey events for that week.

Survey Timeframe

Surveys from only the last 10 years are used in order to ensure delivery of currently relevant information. The exception to this is areas off the Atlantic coast, where bird returns are based on all years of available data, since data in these areas is currently much more sparse.

Facilities

National Wildlife Refuge lands

Any activity proposed on lands managed by the [National Wildlife Refuge](#) system must undergo a 'Compatibility Determination' conducted by the Refuge. Please contact the individual Refuges to discuss any questions or concerns.

There are no refuge lands at this location.

Fish hatcheries

There are no fish hatcheries at this location.

Wetlands in the National Wetlands Inventory (NWI)

Impacts to [NWI wetlands](#) and other aquatic habitats may be subject to regulation under Section 404 of the Clean Water Act, or other State/Federal statutes.

For more information please contact the Regulatory Program of the local [U.S. Army Corps of Engineers District](#).

Wetland information is not available at this time

This can happen when the National Wetlands Inventory (NWI) map service is unavailable, or for very large projects that intersect many wetland areas. Try again, or visit the [NWI map](#) to view wetlands at this location.

Data limitations

The Service's objective of mapping wetlands and deepwater habitats is to produce reconnaissance level information on the location, type and size of these resources. The maps are prepared from the analysis of high altitude imagery. Wetlands are identified based on vegetation, visible hydrology and geography. A margin of error is inherent in the use of imagery; thus, detailed on-the-ground inspection of any particular site may result in revision of the wetland boundaries or classification established through image analysis.

The accuracy of image interpretation depends on the quality of the imagery, the experience of the image analysts, the amount and quality of the collateral data and the amount of ground truth verification work conducted. Metadata should be consulted to determine the date of the source imagery used and any mapping problems.

Wetlands or other mapped features may have changed since the date of the imagery or field work. There may be occasional differences in polygon boundaries or classifications between the information depicted on the map and the actual conditions on site.

Data exclusions

Certain wetland habitats are excluded from the National mapping program because of the limitations of aerial imagery as the primary data source used to detect wetlands. These habitats include seagrasses or submerged aquatic vegetation that are found in the intertidal and subtidal zones of estuaries and nearshore coastal waters. Some deepwater reef communities (coral or tubercid worm reefs) have also been excluded from the inventory. These habitats, because of their depth, go undetected by aerial imagery.

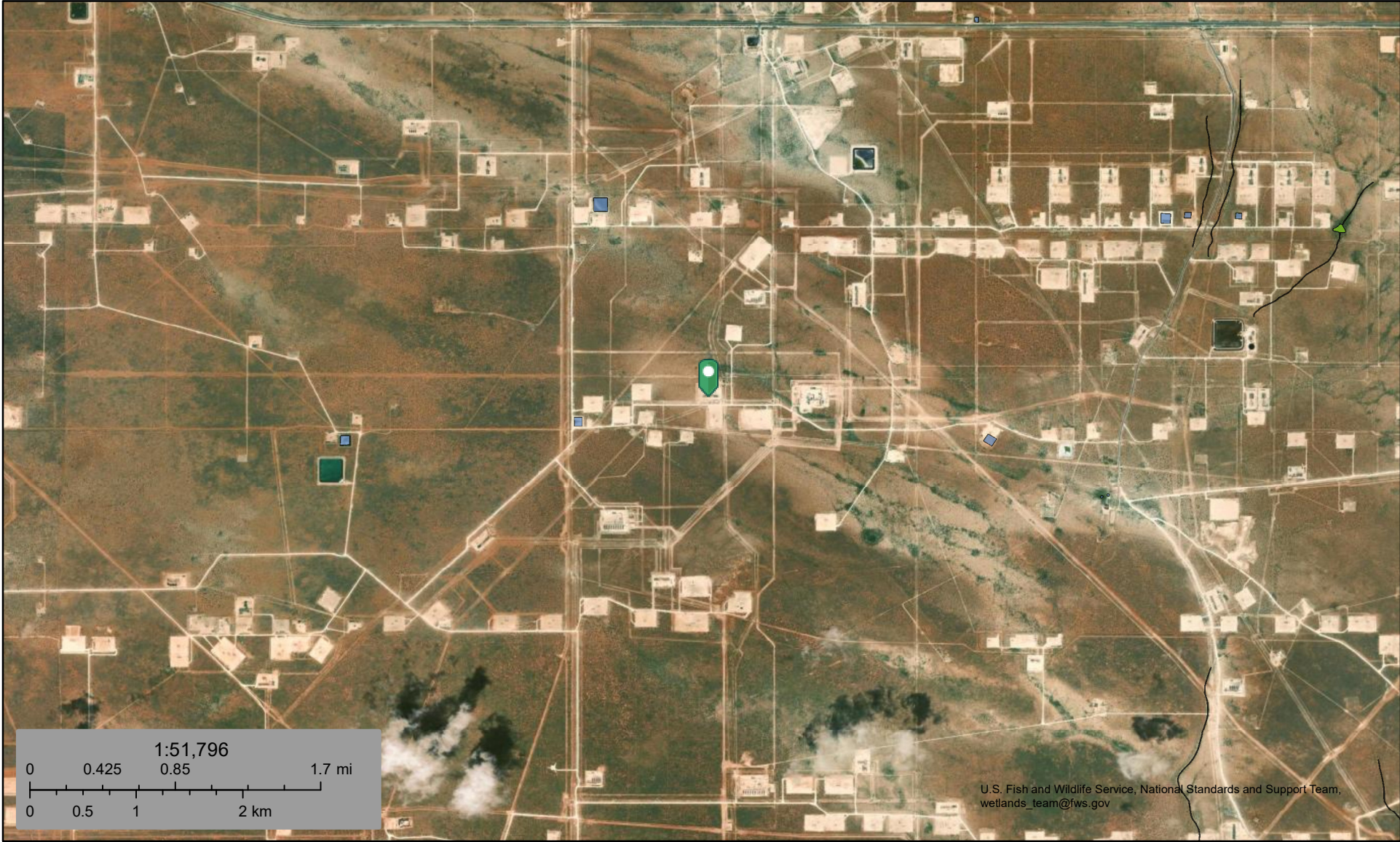
Data precautions

Federal, state, and local regulatory agencies with jurisdiction over wetlands may define and describe wetlands in a different manner than that used in this inventory. There is no attempt, in either the design or products of this inventory, to define the limits of proprietary jurisdiction of any Federal, state, or local government or to establish the geographical scope of the regulatory programs of government agencies. Persons intending to engage in activities involving modifications within or adjacent to wetland areas should seek the advice of appropriate Federal, state, or local agencies concerning specified agency regulatory programs and proprietary jurisdictions that may affect such activities.

NOT FOR CONSULTATION

U.S. Fish and Wildlife Service
National Wetlands Inventory

Mamba 30 State South CTB (02.04.2026)



March 31, 2026

Wetlands

- Estuarine and Marine Deepwater
- Estuarine and Marine Wetland

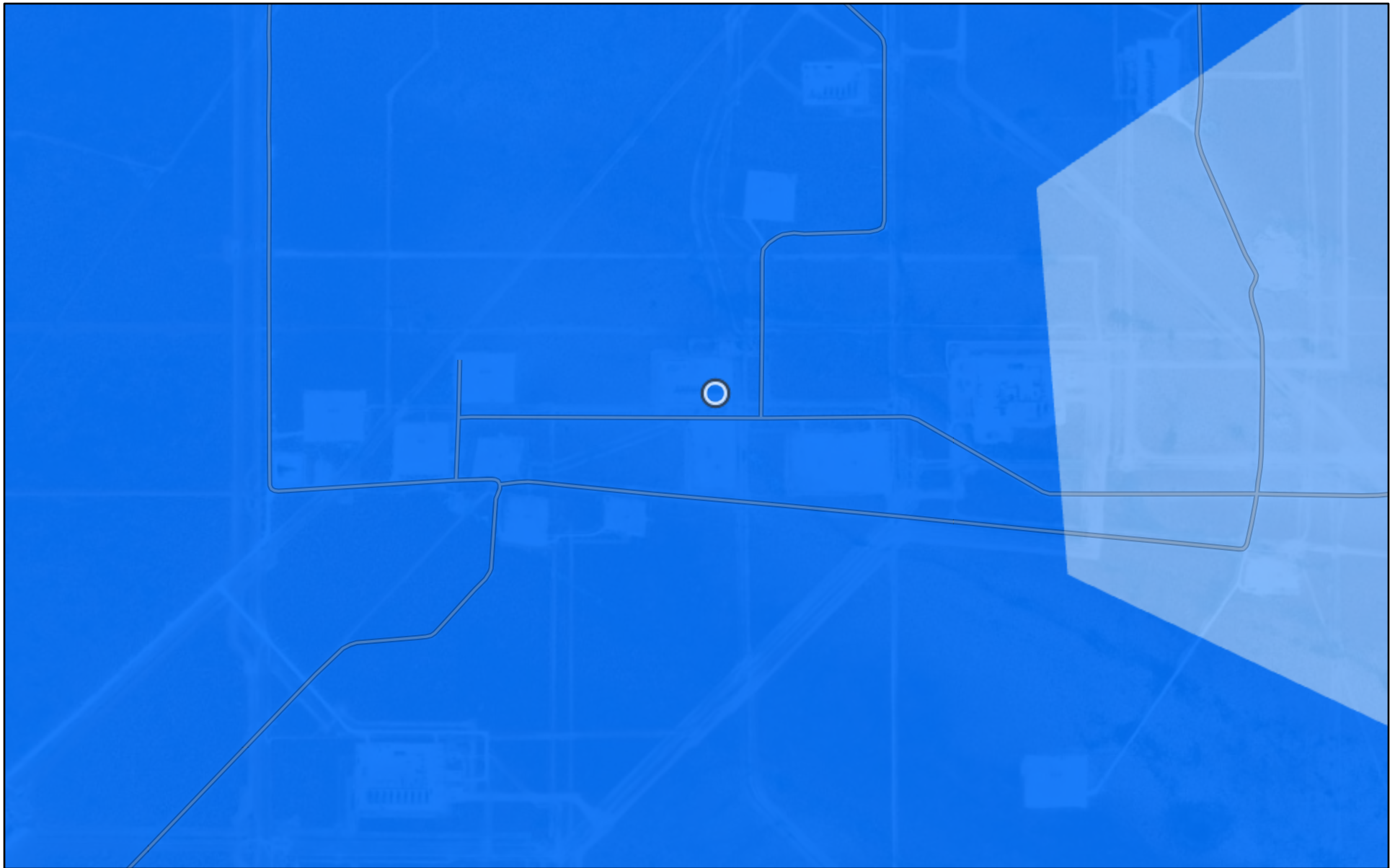
- Freshwater Emergent Wetland
- Freshwater Forested/Shrub Wetland
- Freshwater Pond

- Lake
- Other
- Riverine

This map is for general reference only. The US Fish and Wildlife Service is not responsible for the accuracy or currentness of the base data shown on this map. All wetlands related data should be used in accordance with the layer metadata found on the Wetlands Mapper web site.

U.S. Fish and Wildlife Service, National Standards and Support Team, wetlands_team@fws.gov

Mamba 30 State South CTB (02.04.2026)

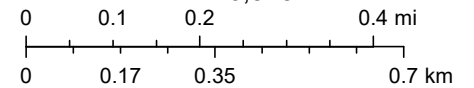


3/30/2026

Crucial Habitat (2024) 5

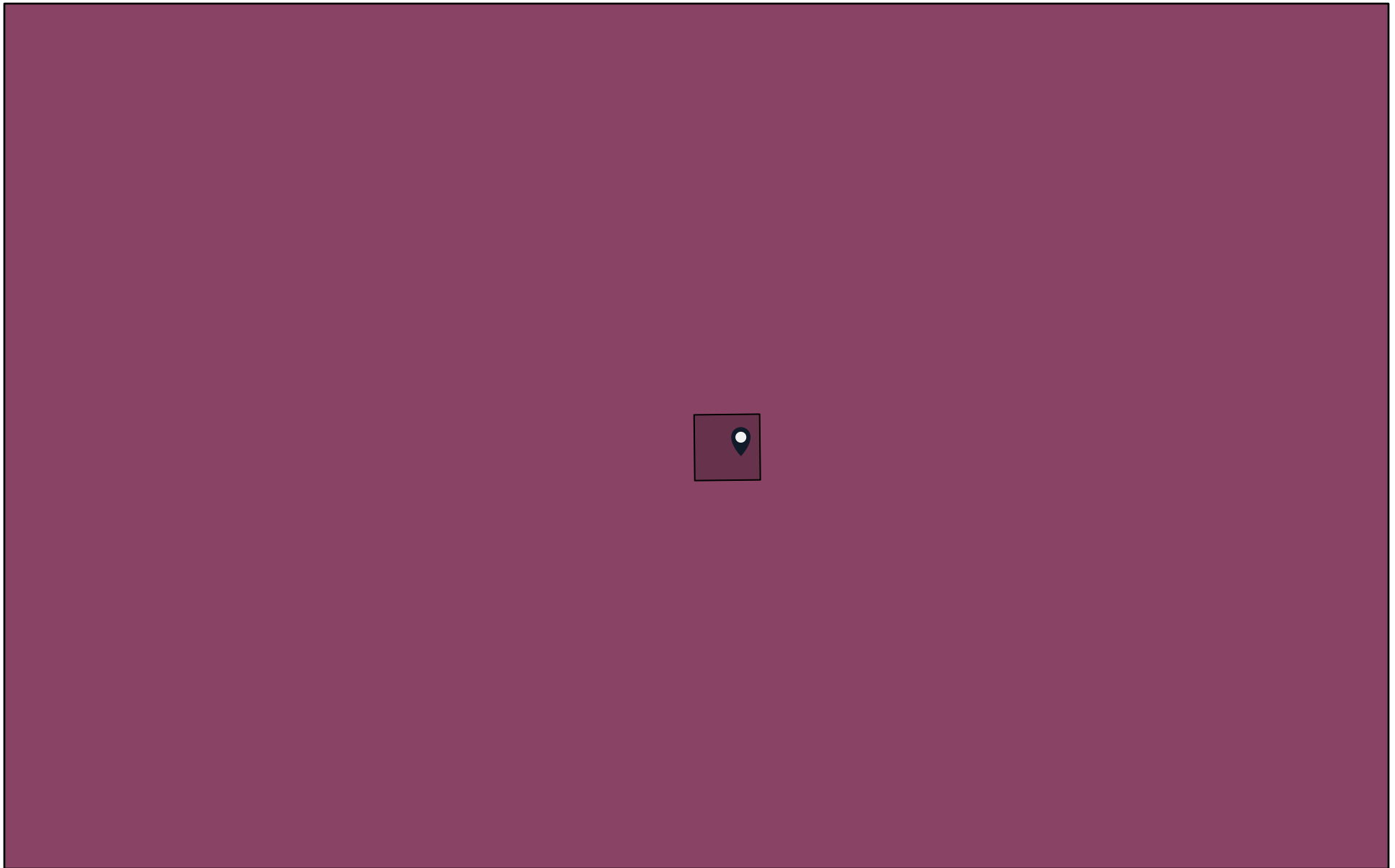
4

1:16,548



Sources: Esri, TomTom, Garmin, FAO, NOAA, USGS, © OpenStreetMap contributors, and the GIS User Community, Vantor

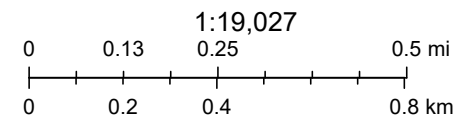
Mamba 30 State South CTB (02.04.2026)



3/30/2026

Lesser Prairie Chicken Habitat

 Isolated Population Area



Bureau of Land Management - New Mexico State Office, Vantor

Sante Fe Main Office
Phone: (505) 476-3441

General Information
Phone: (505) 629-6116

Online Phone Directory
<https://www.emnrd.nm.gov/ocd/contact-us>

State of New Mexico
Energy, Minerals and Natural Resources
Oil Conservation Division
1220 S. St Francis Dr.
Santa Fe, NM 87505

QUESTIONS

Action 569908

QUESTIONS

Operator: EOG RESOURCES INC 5509 Champions Drive Midland, TX 79706	OGRID: 7377
	Action Number: 569908
	Action Type: [C-141] Remediation Closure Request C-141 (C-141-v-Closure)

QUESTIONS

Prerequisites	
Incident ID (n#)	nAPP2604152281
Incident Name	NAPP2604152281 MAMBA 30 STATE SOUTH CTB @ FAPP2203935529
Incident Type	Oil Release
Incident Status	Remediation Closure Report Received
Incident Facility	[fAPP2203935529] MAMBA 30 STATE SOUTH CTB

Location of Release Source	
<i>Please answer all the questions in this group.</i>	
Site Name	MAMBA 30 STATE SOUTH CTB
Date Release Discovered	02/04/2026
Surface Owner	State

Incident Details	
<i>Please answer all the questions in this group.</i>	
Incident Type	Oil Release
Did this release result in a fire or is the result of a fire	No
Did this release result in any injuries	No
Has this release reached or does it have a reasonable probability of reaching a watercourse	No
Has this release endangered or does it have a reasonable probability of endangering public health	No
Has this release substantially damaged or will it substantially damage property or the environment	No
Is this release of a volume that is or may with reasonable probability be detrimental to fresh water	No

Nature and Volume of Release	
<i>Material(s) released, please answer all that apply below. Any calculations or specific justifications for the volumes provided should be attached to the follow-up C-141 submission.</i>	
Crude Oil Released (bbls) Details	Cause: Human Error Valve Crude Oil Released: 10 BBL Recovered: 10 BBL Lost: 0 BBL.
Produced Water Released (bbls) Details	Not answered.
Is the concentration of chloride in the produced water >10,000 mg/l	No
Condensate Released (bbls) Details	Not answered.
Natural Gas Vented (Mcf) Details	Not answered.
Natural Gas Flared (Mcf) Details	Not answered.
Other Released Details	Not answered.
Are there additional details for the questions above (i.e. any answer containing Other, Specify, Unknown, and/or Fire, or any negative lost amounts)	A ball valve on the LACT was slightly open that caused a release of 10 bbls of crude oil inside lined containment. All 10 bbls of oil were recovered.

Sante Fe Main Office
Phone: (505) 476-3441

General Information
Phone: (505) 629-6116

Online Phone Directory
<https://www.emnrd.nm.gov/ocd/contact-us>

State of New Mexico
Energy, Minerals and Natural Resources
Oil Conservation Division
1220 S. St Francis Dr.
Santa Fe, NM 87505

QUESTIONS, Page 2

Action 569908

QUESTIONS (continued)

Operator: EOG RESOURCES INC 5509 Champions Drive Midland, TX 79706	OGRID: 7377
	Action Number: 569908
	Action Type: [C-141] Remediation Closure Request C-141 (C-141-v-Closure)

QUESTIONS

Nature and Volume of Release (continued)	
Is this a gas only submission (i.e. only significant Mcf values reported)	No, according to supplied volumes this does not appear to be a "gas only" report.
Was this a major release as defined by Subsection A of 19.15.29.7 NMAC	No
Reasons why this would be considered a submission for a notification of a major release	<i>Unavailable.</i>
<i>With the implementation of the 19.15.27 NMAC (05/25/2021), venting and/or flaring of natural gas (i.e. gas only) are to be submitted on the C-129 form.</i>	

Initial Response

The responsible party must undertake the following actions immediately unless they could create a safety hazard that would result in injury.

The source of the release has been stopped	True
The impacted area has been secured to protect human health and the environment	True
Released materials have been contained via the use of berms or dikes, absorbent pads, or other containment devices	True
All free liquids and recoverable materials have been removed and managed appropriately	True
If all the actions described above have not been undertaken, explain why	na

Per Paragraph (4) of Subsection B of 19.15.29.8 NMAC the responsible party may commence remediation immediately after discovery of a release. If remediation has begun, please prepare and attach a narrative of actions to date in the follow-up C-141 submission. If remedial efforts have been successfully completed or if the release occurred within a lined containment area (see Subparagraph (a) of Paragraph (5) of Subsection A of 19.15.29.11 NMAC), please prepare and attach all information needed for closure evaluation in the follow-up C-141 submission.

I hereby certify that the information given above is true and complete to the best of my knowledge and understand that pursuant to OCD rules and regulations all operators are required to report and/or file certain release notifications and perform corrective actions for releases which may endanger public health or the environment. The acceptance of a C-141 report by the OCD does not relieve the operator of liability should their operations have failed to adequately investigate and remediate contamination that pose a threat to groundwater, surface water, human health or the environment. In addition, OCD acceptance of a C-141 report does not relieve the operator of responsibility for compliance with any other federal, state, or local laws and/or regulations.

I hereby agree and sign off to the above statement	Name: Hadlie Stout Title: Environmental Representative II Email: Hadlie_stout@eogresources.com Date: 04/01/2026
--	--

Sante Fe Main Office
Phone: (505) 476-3441

General Information
Phone: (505) 629-6116

Online Phone Directory
<https://www.emnrd.nm.gov/ocd/contact-us>

State of New Mexico
Energy, Minerals and Natural Resources
Oil Conservation Division
1220 S. St Francis Dr.
Santa Fe, NM 87505

QUESTIONS, Page 3

Action 569908

QUESTIONS (continued)

Operator: EOG RESOURCES INC 5509 Champions Drive Midland, TX 79706	OGRID: 7377
	Action Number: 569908
	Action Type: [C-141] Remediation Closure Request C-141 (C-141-v-Closure)

QUESTIONS

Site Characterization

Please answer all the questions in this group (only required when seeking remediation plan approval and beyond). This information must be provided to the appropriate district office no later than 90 days after the release discovery date.

What is the shallowest depth to groundwater beneath the area affected by the release in feet below ground surface (ft bgs)	Between 51 and 75 (ft.)
What method was used to determine the depth to ground water	OCD Imaging Records Lookup
Did this release impact groundwater or surface water	No
What is the minimum distance, between the closest lateral extents of the release and the following surface areas:	
A continuously flowing watercourse or any other significant watercourse	Between 1 and 5 (mi.)
Any lakebed, sinkhole, or playa lake (measured from the ordinary high-water mark)	Between 1 and 5 (mi.)
An occupied permanent residence, school, hospital, institution, or church	Between 1 and 5 (mi.)
A spring or a private domestic fresh water well used by less than five households for domestic or stock watering purposes	Between 1 and 5 (mi.)
Any other fresh water well or spring	Between 1 and 5 (mi.)
Incorporated municipal boundaries or a defined municipal fresh water well field	Greater than 5 (mi.)
A wetland	Between 1 and 5 (mi.)
A subsurface mine	Between 1 and 5 (mi.)
An (non-karst) unstable area	Greater than 5 (mi.)
Categorize the risk of this well / site being in a karst geology	Low
A 100-year floodplain	Greater than 5 (mi.)
Did the release impact areas not on an exploration, development, production, or storage site	No

Remediation Plan

Please answer all the questions that apply or are indicated. This information must be provided to the appropriate district office no later than 90 days after the release discovery date.

Requesting a remediation plan approval with this submission	Yes
<i>Attach a comprehensive report demonstrating the lateral and vertical extents of soil contamination associated with the release have been determined, pursuant to 19.15.29.11 NMAC and 19.15.29.13 NMAC.</i>	
Have the lateral and vertical extents of contamination been fully delineated	Yes
Was this release entirely contained within a lined containment area	Yes
<i>Per Subsection B of 19.15.29.11 NMAC unless the site characterization report includes completed efforts at remediation, the report must include a proposed remediation plan in accordance with 19.15.29.12 NMAC, which includes the anticipated timelines for beginning and completing the remediation.</i>	
On what estimated date will the remediation commence	02/04/2026
On what date will (or did) the final sampling or liner inspection occur	02/25/2026
On what date will (or was) the remediation complete(d)	02/25/2026
What is the estimated surface area (in square feet) that will be remediated	0
What is the estimated volume (in cubic yards) that will be remediated	0

These estimated dates and measurements are recognized to be the best guess or calculation at the time of submission and may (be) change(d) over time as more remediation efforts are completed. The OCD recognizes that proposed remediation measures may have to be minimally adjusted in accordance with the physical realities encountered during remediation. If the responsible party has any need to significantly deviate from the remediation plan proposed, then it should consult with the division to determine if another remediation plan submission is required.

Sante Fe Main Office
Phone: (505) 476-3441

General Information
Phone: (505) 629-6116

Online Phone Directory
<https://www.emnrd.nm.gov/ocd/contact-us>

State of New Mexico
Energy, Minerals and Natural Resources
Oil Conservation Division
1220 S. St Francis Dr.
Santa Fe, NM 87505

QUESTIONS, Page 4

Action 569908

QUESTIONS (continued)

Operator: EOG RESOURCES INC 5509 Champions Drive Midland, TX 79706	OGRID: 7377
	Action Number: 569908
	Action Type: [C-141] Remediation Closure Request C-141 (C-141-v-Closure)

QUESTIONS

Remediation Plan (continued)	
<i>Please answer all the questions that apply or are indicated. This information must be provided to the appropriate district office no later than 90 days after the release discovery date.</i>	
This remediation will (or is expected to) utilize the following processes to remediate / reduce contaminants:	
<i>(Select all answers below that apply.)</i>	
Is (or was) there affected material present needing to be removed	Yes
Is (or was) there a power wash of the lined containment area (to be) performed	Yes
OTHER (Non-listed remedial process)	No
<i>Per Subsection B of 19.15.29.11 NMAC unless the site characterization report includes completed efforts at remediation, the report must include a proposed remediation plan in accordance with 19.15.29.12 NMAC, which includes the anticipated timelines for beginning and completing the remediation.</i>	
I hereby certify that the information given above is true and complete to the best of my knowledge and understand that pursuant to OCD rules and regulations all operators are required to report and/or file certain release notifications and perform corrective actions for releases which may endanger public health or the environment. The acceptance of a C-141 report by the OCD does not relieve the operator of liability should their operations have failed to adequately investigate and remediate contamination that pose a threat to groundwater, surface water, human health or the environment. In addition, OCD acceptance of a C-141 report does not relieve the operator of responsibility for compliance with any other federal, state, or local laws and/or regulations.	
I hereby agree and sign off to the above statement	Name: Hadlie Stout Title: Environmental Representative II Email: Hadlie_stout@eogresources.com Date: 04/01/2026
<i>The OCD recognizes that proposed remediation measures may have to be minimally adjusted in accordance with the physical realities encountered during remediation. If the responsible party has any need to significantly deviate from the remediation plan proposed, then it should consult with the division to determine if another remediation plan submission is required.</i>	

Sante Fe Main Office
Phone: (505) 476-3441

General Information
Phone: (505) 629-6116

Online Phone Directory
<https://www.emnrd.nm.gov/ocd/contact-us>

**State of New Mexico
Energy, Minerals and Natural Resources
Oil Conservation Division
1220 S. St Francis Dr.
Santa Fe, NM 87505**

QUESTIONS, Page 6

Action 569908

QUESTIONS (continued)

Operator: EOG RESOURCES INC 5509 Champions Drive Midland, TX 79706	OGRID: 7377
	Action Number: 569908
	Action Type: [C-141] Remediation Closure Request C-141 (C-141-v-Closure)

QUESTIONS

Liner Inspection Information	
Last liner inspection notification (C-141L) recorded	556701
Liner inspection date pursuant to Subparagraph (a) of Paragraph (5) of Subsection A of 19.15.29.11 NMAC	02/25/2026
Was all the impacted materials removed from the liner	Yes
What was the liner inspection surface area in square feet	750

Remediation Closure Request	
<i>Only answer the questions in this group if seeking remediation closure for this release because all remediation steps have been completed.</i>	
Requesting a remediation closure approval with this submission	Yes
Have the lateral and vertical extents of contamination been fully delineated	Yes
Was this release entirely contained within a lined containment area	Yes
What was the total surface area (in square feet) remediated	0
What was the total volume (cubic yards) remediated	0
Summarize any additional remediation activities not included by answers (above)	Liner operating as designed

The responsible party must attach information demonstrating they have complied with all applicable closure requirements and any conditions or directives of the OCD. This demonstration should be in the form of a comprehensive report (in .pdf format) including a scaled site map, sampling diagrams, relevant field notes, photographs of any excavation prior to backfilling, laboratory data including chain of custody documents of final sampling, and a narrative of the remedial activities. Refer to 19.15.29.12 NMAC.

I hereby certify that the information given above is true and complete to the best of my knowledge and understand that pursuant to OCD rules and regulations all operators are required to report and/or file certain release notifications and perform corrective actions for releases which may endanger public health or the environment. The acceptance of a C-141 report by the OCD does not relieve the operator of liability should their operations have failed to adequately investigate and remediate contamination that pose a threat to groundwater, surface water, human health or the environment. In addition, OCD acceptance of a C-141 report does not relieve the operator of responsibility for compliance with any other federal, state, or local laws and/or regulations. The responsible party acknowledges they must substantially restore, reclaim, and re-vegetate the impacted surface area to the conditions that existed prior to the release or their final land use in accordance with 19.15.29.13 NMAC including notification to the OCD when reclamation and re-vegetation are complete.

I hereby agree and sign off to the above statement	Name: Hadlie Stout Title: Environmental Representative II Email: Hadlie_stout@eogresources.com Date: 04/01/2026
--	--

Sante Fe Main Office
Phone: (505) 476-3441

General Information
Phone: (505) 629-6116

Online Phone Directory
<https://www.emnrd.nm.gov/ocd/contact-us>

State of New Mexico
Energy, Minerals and Natural Resources
Oil Conservation Division
1220 S. St Francis Dr.
Santa Fe, NM 87505

CONDITIONS

Action 569908

CONDITIONS

Operator: EOG RESOURCES INC 5509 Champions Drive Midland, TX 79706	OGRID: 7377
	Action Number: 569908
	Action Type: [C-141] Remediation Closure Request C-141 (C-141-v-Closure)

CONDITIONS

Created By	Condition	Condition Date
scott.rodgers	App ID 569908 Liner Inspection approved	4/6/2026