



SITE INFORMATION

Closure Report

Santa Fe Land SWD #001 (11.13.2025)

Incident ID: nAPP2531825418

Eddy County, New Mexico

Unit I, S17, T19S, R26E

32.657864°, -104.397456°

Produced Water Release

Point of Release: Equipment Failure From Tank Battery

Release Date: 11.13.2025

Volume Released: 530 Barrels of Produced Water

Volume Recovered: 530 Barrels of Produced Water

CARMONA RESOURCES



Prepared for:

**Riley Permian Operating
29 E. Reno Ave, Suite 500
Oklahoma City, Oklahoma 73104**

Prepared by:

**Carmona Resources, LLC
310 West Wall Street
Suite 500
Midland, Texas 79701**

TABLE OF CONTENTS

1.0 SITE INFORMATION AND BACKGROUND

2.0 SITE CHARACTERIZATION AND GROUNDWATER

3.0 NMAC REGULATORY CRITERIA

4.0 LINER INSPECTION ACTIVITIES

5.0 CONCLUSIONS

FIGURES

FIGURE 1 OVERVIEW FIGURE 2 TOPOGRAPHIC

FIGURE 3 CONTAINMENT

APPENDICES

APPENDIX A PHOTOS

APPENDIX B NMOCD CORRESPONDENCE

APPENDIX C SITE CHARACTERIZATION AND GROUNDWATER



May 28, 2026

Mike Bratcher
District Supervisor
Oil Conservation Division, District II
811 S. First Street
Artesia, New Mexico 88210

Re: **Closure Report**
Santa Fe Land SWD #001 (11.13.2026)
Incident ID: nAPP2531825418
Riley Permian Operating Company, LLC
Site Location: Unit I, S17, T19S, R26E
32.657864°, -104.397456°
Eddy County, New Mexico

Mr. Bratcher:

At the request of Riley Permian Operating Company, LLC (Formally known as Silverback Operating), Carmona Resources, LLC has prepared this letter to document the liner inspection activities conducted at the Santa Fe Land SWD #001 (11.13.2025) (Site) located at 32.657864°, -104.397456° in Eddy County, New Mexico (Figures 1 and 2).

1.0 Site Information and Background

Based on the initial C-141 obtained from the New Mexico Oil Conservation Division (NMOCD), the release was discovered on November 13, 2025, due to equipment failure from the tank battery causing a release inside the containment. It resulted in approximately five hundred and thirty (530) barrels of produced water being released inside the lined containment, with five hundred and thirty (530) barrels of produced water being immediately recovered. The containment area is approximately 4,000 sq ft. The containment boundaries are shown in Figure 3. The initial C-141 form is attached in Appendix B.

2.0 Site Characterization and Groundwater

The site is located within a medium karst area. Based on a review of the New Mexico Office of State Engineers and USGS databases, there is no known water sources within a 0.5-mile radius of the location. The nearest water well is approximately 0.21 miles South of the site in S20, T19S, R26E and was last gauged in 2005. The depth of water during the 2005 gauging event was 87.20' (ft bgs). A copy of the associated Summary Report is attached in Appendix C.

3.0 NMAC Regulatory Criteria

Per the NMOCD regulatory criteria established in 19.15.29.12 NMAC, the following criteria were utilized in assessing and remediating the site.

- Benzene: 10 milligrams per kilogram (mg/kg).
- Benzene, toluene, ethylbenzene, and total xylenes (BTEX): 50 mg/kg.
- TPH: 100 mg/kg (GRO + DRO + MRO).
- Chloride: 600 mg/kg.



4.0 Liner Inspection Activities

Prior to Carmona Resources conducting a Liner Inspection, Riley Permian contractors removed all gravel and washed the containment. Following that, there was a weather event a day prior (May 26, 2026) to the official inspection date, leaving minimal rainwater inside the exposed containment. The NMOCD division office was notified via NMOCD portal on May 22, 2026, per Subsection D of 19.15.29.12 NMAC. See Appendix B for the NMOCD correspondence prior to performing the liner inspection. On May 27, 2026, Carmona Resources, LLC conducted liner inspection activities to assess the tank batteries lined containment integrity and determined there were no integrity issues. During this time, no chloride staining was found surround the lined containment. The days following the inspection, additional rain events have affected the site and all of Southeast New Mexico. The rainwater inside the containment area helps demonstrate the liner integrity. Refer to the Photolog in Appendix A. Appendix B also contains a Liner Integrity Certification. Figure 3 shows the containment area outline.

5.0 Conclusions

Based on the liner integrity inspection taken place onsite, no further actions are required at the site. Riley Permian formally requests the closure of the spill. If you have any questions regarding this report or need additional information, please contact us at 432-813-8988.

Sincerely,

Carmona Resources, LLC

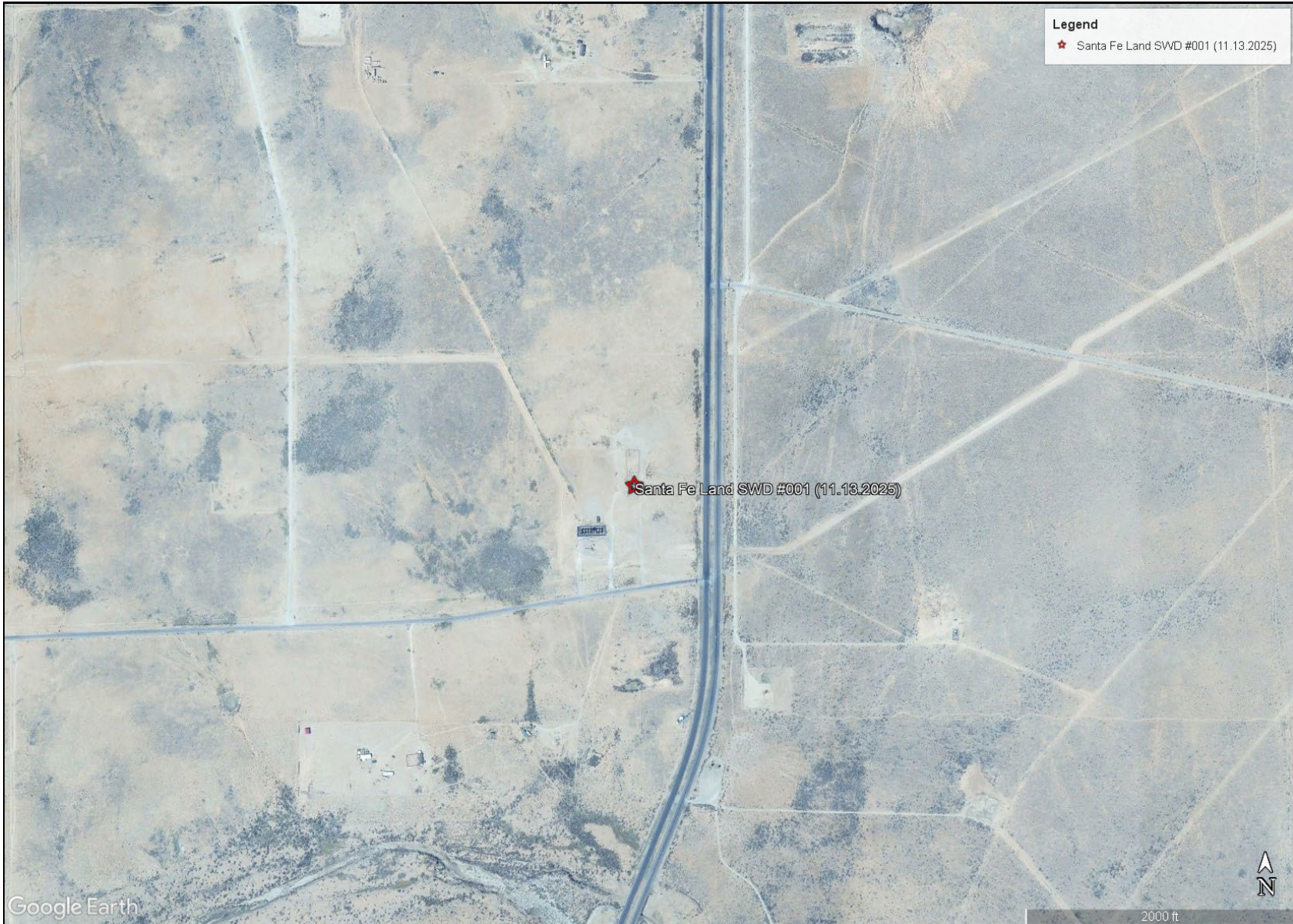
Ashton Thielke
Director of Operations

Riley Plogger
Project Manager

FIGURES

CARMONA RESOURCES

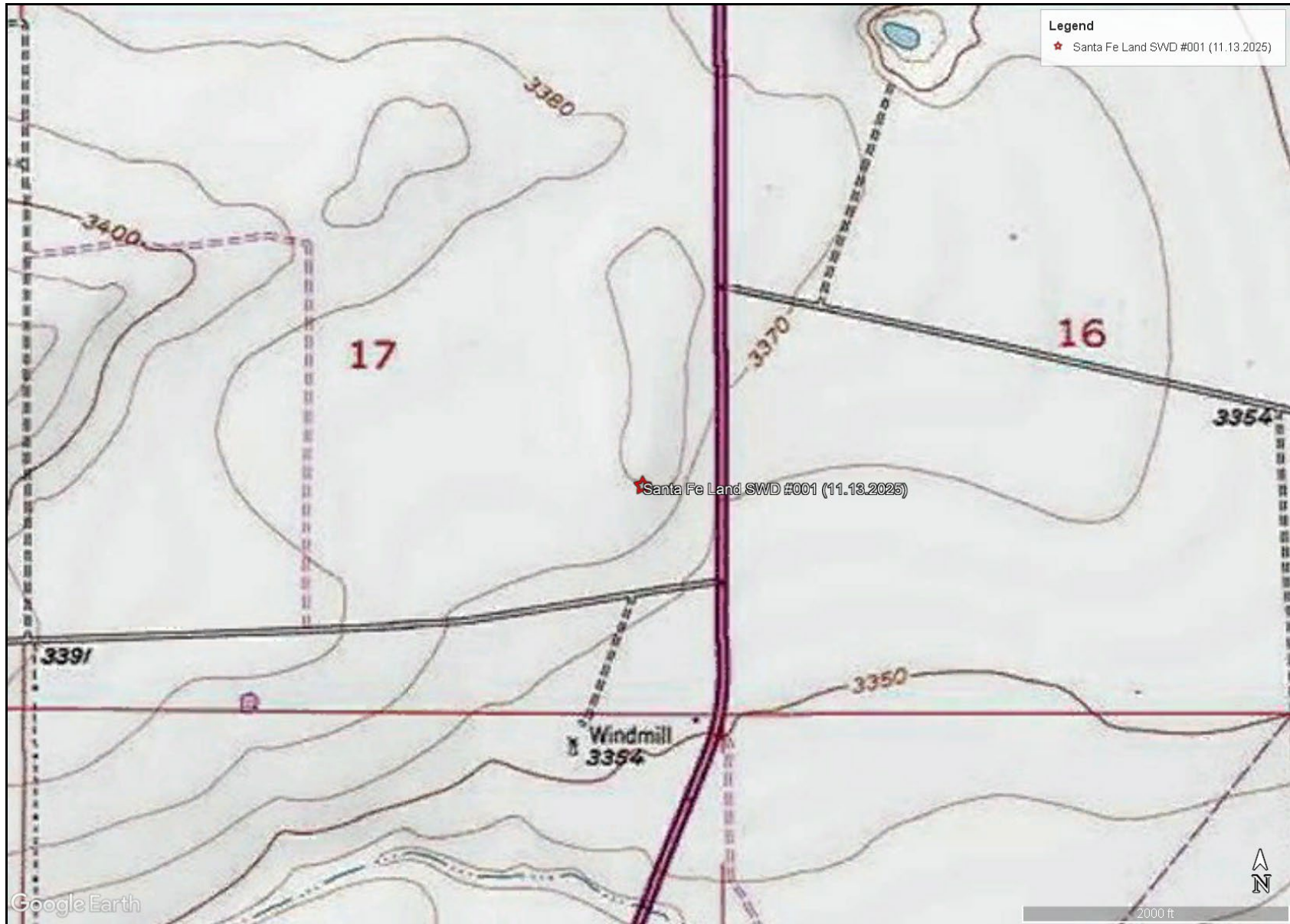




OVERVIEW MAP
RILEY PERMIAN OPERATING
SANTA FE LAND SWD #001 (11.13.2025)
EDDY COUNTY, NEW MEXICO
32.657864°, -104.397456°



FIGURE 1



TOPOGRAPHIC MAP
RILEY PERMIAN OPERATING
SANTA FE LAND SWD #001 (11.13.2025)
EDDY COUNTY, NEW MEXICO
32.657864°, -104.397456°



FIGURE 2



LINED CONTAINMENT MAP
RILEY PERMIAN OPERATING
SANTA FE LAND SWD #001 (11.13.2025)
EDDY COUNTY, NEW MEXICO
32.657864°, -104.397456°



FIGURE 3

APPENDIX A

CARMONA RESOURCES



PHOTOGRAPHIC LOG

Riley Permian Operating

Photograph No. 1

Facility: Santa Fe Land SWD #001
(11.13.2025)

County: Eddy County, New Mexico

Description:
View of the spill inside the lined containment.



Photograph No. 2

Facility: Santa Fe Land SWD #001
(11.13.2025)

County: Eddy County, New Mexico

Description:
View of the spill inside the lined containment.



Photograph No. 3

Facility: Santa Fe Land SWD #001
(11.13.2025)

County: Eddy County, New Mexico

Description:
View of the spill inside the lined containment.



PHOTOGRAPHIC LOG

Riley Permian Operating

Photograph No. 4

Facility: Santa Fe Land SWD #001
(11.13.2025)

County: Eddy County, New Mexico

Description:
View Northwest of the exposed liner.



Photograph No. 5

Facility: Santa Fe Land SWD #001
(11.13.2025)

County: Eddy County, New Mexico

Description:
View Northeast of the exposed liner.



Photograph No. 6

Facility: Santa Fe Land SWD #001
(11.13.2025)

County: Eddy County, New Mexico

Description:
View Northwest of the exposed liner.



PHOTOGRAPHIC LOG

Riley Permian Operating

Photograph No. 7

Facility: Santa Fe Land SWD #001
(11.13.2025)

County: Eddy County, New Mexico

Description:
View North of the exposed liner.

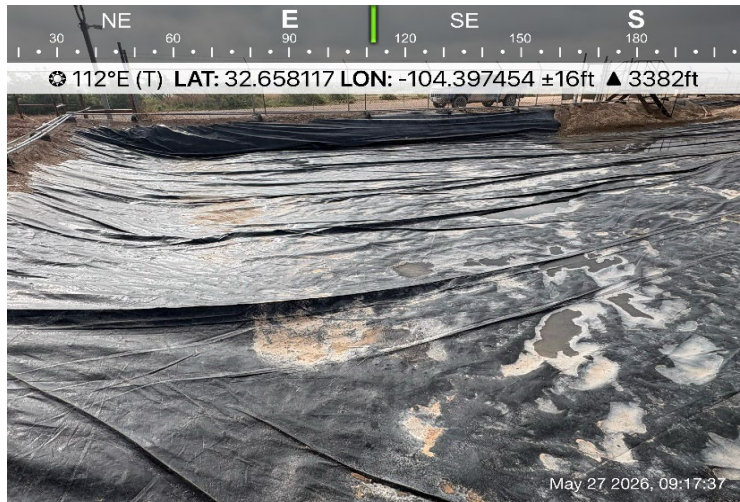


Photograph No. 8

Facility: Santa Fe Land SWD #001
(11.13.2025)

County: Eddy County, New Mexico

Description:
View East of the exposed liner.



Photograph No. 9

Facility: Santa Fe Land SWD #001
(11.13.2025)

County: Eddy County, New Mexico

Description:
View South of the exposed liner.



PHOTOGRAPHIC LOG

Riley Permian Operating

Photograph No. 10

Facility: Santa Fe Land SWD #001
(11.13.2025)

County: Eddy County, New Mexico

Description:
View Southwest of the exposed liner.



Photograph No. 11

Facility: Santa Fe Land SWD #001
(11.13.2025)

County: Eddy County, New Mexico

Description:
View South of the exposed liner.

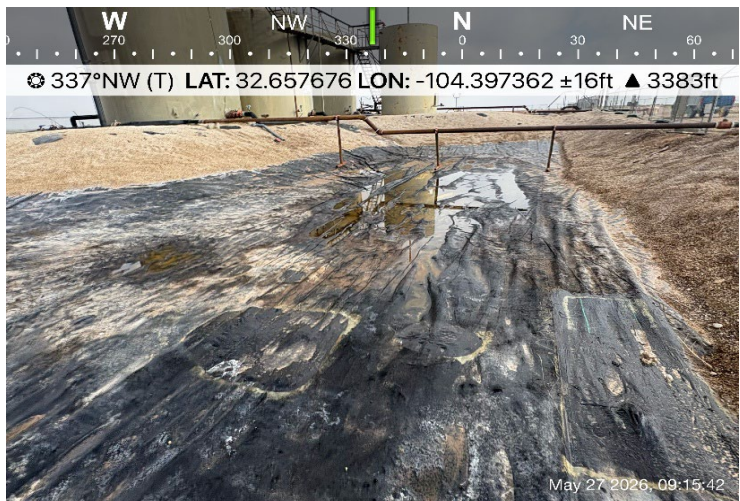


Photograph No. 12

Facility: Santa Fe Land SWD #001
(11.13.2025)

County: Eddy County, New Mexico

Description:
View Northwest of the exposed liner.



APPENDIX B

CARMONA RESOURCES



Sante Fe Main Office
Phone: (505) 476-3441

General Information
Phone: (505) 629-6116

Online Phone Directory
<https://www.emnrd.nm.gov/ocd/contact-us>

**State of New Mexico
Energy, Minerals and Natural Resources
Oil Conservation Division
1220 S. St Francis Dr.
Santa Fe, NM 87505**

QUESTIONS

Action 526480

QUESTIONS

Operator: Silverback Operating II, LLC 1001 W. Wilshire Blvd Oklahoma City, OK 73112	OGRID: 330968
	Action Number: 526480
	Action Type: [NOTIFY] Notification Of Release (NOR)

QUESTIONS

Location of Release Source	
<i>Please answer all the questions in this group.</i>	
Site Name	SANTA FE LAND SWD #001
Date Release Discovered	11/13/2025
Surface Owner	Private

Incident Details	
<i>Please answer all the questions in this group.</i>	
Incident Type	Produced Water Release
Did this release result in a fire or is the result of a fire	No
Did this release result in any injuries	No
Has this release reached or does it have a reasonable probability of reaching a watercourse	No
Has this release endangered or does it have a reasonable probability of endangering public health	No
Has this release substantially damaged or will it substantially damage property or the environment	No
Is this release of a volume that is or may with reasonable probability be detrimental to fresh water	No

Nature and Volume of Release	
<i>Material(s) released, please answer all that apply below. Any calculations or specific justifications for the volumes provided should be attached to the follow-up C-141 submission.</i>	
Crude Oil Released (bbls) Details	Not answered.
Produced Water Released (bbls) Details	Cause: Equipment Failure Tank (Any) Produced Water Released: 530 BBL Recovered: 530 BBL Lost: 0 BBL.
Is the concentration of chloride in the produced water >10,000 mg/l	Yes
Condensate Released (bbls) Details	Not answered.
Natural Gas Vented (Mcf) Details	Not answered.
Natural Gas Flared (Mcf) Details	Not answered.
Other Released Details	Not answered.
Are there additional details for the questions above (i.e. any answer containing Other, Specify, Unknown, and/or Fire, or any negative lost amounts)	Not answered.

Sante Fe Main Office
Phone: (505) 476-3441

General Information
Phone: (505) 629-6116

Online Phone Directory
<https://www.emnrd.nm.gov/ocd/contact-us>

**State of New Mexico
Energy, Minerals and Natural Resources
Oil Conservation Division
1220 S. St Francis Dr.
Santa Fe, NM 87505**

QUESTIONS, Page 2

Action 526480

QUESTIONS (continued)

Operator: Silverback Operating II, LLC 1001 W. Wilshire Blvd Oklahoma City, OK 73112	OGRID: 330968
	Action Number: 526480
	Action Type: [NOTIFY] Notification Of Release (NOR)

QUESTIONS

Nature and Volume of Release (continued)	
Is this a gas only submission (i.e. only significant Mcf values reported)	No, according to supplied volumes this does not appear to be a "gas only" report.
Was this a major release as defined by Subsection A of 19.15.29.7 NMAC	Yes
Reasons why this would be considered a submission for a notification of a major release	From paragraph A. "Major release" determine using: (1) an unauthorized release of a volume, excluding gases, of 25 barrels or more.
<i>With the implementation of the 19.15.27 NMAC (05/25/2021), venting and/or flaring of natural gas (i.e. gas only) are to be submitted on the C-129 form.</i>	

Initial Response

The responsible party must undertake the following actions immediately unless they could create a safety hazard that would result in injury.

The source of the release has been stopped	True
The impacted area has been secured to protect human health and the environment	True
Released materials have been contained via the use of berms or dikes, absorbent pads, or other containment devices	True
All free liquids and recoverable materials have been removed and managed appropriately	True
If all the actions described above have not been undertaken, explain why	Not answered.

Per Paragraph 4 of Subsection B of 19.15.29.8 NMAC the responsible party may commence remediation immediately after discovery of a release. If remediation has begun, please prepare and attach a narrative of actions to date in the follow-up C-141 submission. If remedial efforts have been successfully completed or if the release occurred within a lined containment area (see 19.15.29.11(A)(5)(a) NMAC), please prepare and attach all information needed for closure evaluation in the follow-up C-141 submission.

Sante Fe Main Office
Phone: (505) 476-3441

General Information
Phone: (505) 629-6116

Online Phone Directory
<https://www.emnrd.nm.gov/ocd/contact-us>

**State of New Mexico
Energy, Minerals and Natural Resources
Oil Conservation Division
1220 S. St Francis Dr.
Santa Fe, NM 87505**

ACKNOWLEDGMENTS

Action 526480

ACKNOWLEDGMENTS

Operator: Silverback Operating II, LLC 1001 W. Wilshire Blvd Oklahoma City, OK 73112	OGRID: 330968
	Action Number: 526480
	Action Type: [NOTIFY] Notification Of Release (NOR)

ACKNOWLEDGMENTS

<input checked="" type="checkbox"/>	I acknowledge that I am authorized to submit notification of a release on behalf of my operator.
<input checked="" type="checkbox"/>	I acknowledge that upon submitting this application, I will be creating a new incident file (assigned to my operator) to track the notification(s) and corrective action(s) for a release, pursuant to NMAC 19.15.29.
<input checked="" type="checkbox"/>	I acknowledge that creating a new incident file will require my operator to file subsequent submission(s) of form "C-141, Application for administrative approval of a release notification and corrective action", pursuant to NMAC 19.15.29.
<input checked="" type="checkbox"/>	I hereby certify that the information given above is true and complete to the best of my knowledge and understand that pursuant to OCD rules and regulations all operators are required to report and/or file certain release notifications and perform corrective actions for releases which may endanger public health or the environment.
<input checked="" type="checkbox"/>	I acknowledge the fact that the acceptance of a C-141 report by the OCD does not relieve the operator of liability should their operations have failed to adequately investigate and remediate contamination that pose a threat to groundwater, surface water, human health or the environment.
<input checked="" type="checkbox"/>	I acknowledge the fact that, in addition, OCD acceptance of a C-141 report does not relieve the operator of responsibility for compliance with any other federal, state, or local laws and/or regulations.

Sante Fe Main Office
Phone: (505) 476-3441

General Information
Phone: (505) 629-6116

Online Phone Directory
<https://www.emnrd.nm.gov/ocd/contact-us>

State of New Mexico
Energy, Minerals and Natural Resources
Oil Conservation Division
1220 S. St Francis Dr.
Santa Fe, NM 87505

CONDITIONS

Action 526480

CONDITIONS

Operator: Silverback Operating II, LLC 1001 W. Wilshire Blvd Oklahoma City, OK 73112	OGRID: 330968
	Action Number: 526480
	Action Type: [NOTIFY] Notification Of Release (NOR)

CONDITIONS

Created By	Condition	Condition Date
frodriguez	When submitting future reports regarding this release, please submit the calculations used or specific justification for the volumes reported on the initial C-141.	11/14/2025



Volume Justification

This form is to be used to convey justification of spill volumes in the event of a release. Clearly indicate by calculations or description in the space provided below.

Justification:

Soil Type	Porosity	Length	Width	Depth (.083 per inch)	Cubic Feet	Estimated Barrels	Soil Type
Clay	0.15	10	10	0.083	8.3	0.22	Clay
Peat	0.40	10	10	0.083	8.3	0.59	Peat
Glacial Sediments	0.13	10	10	0.083	8.3	0.19	Glacial Sediments
Sandy Clay	0.12	10	10	0.083	8.3	0.18	Sandy Clay
Silt	0.16	10	10	0.083	8.3	0.24	Silt
Loess	0.25	10	10	0.083	8.3	0.37	Loess
Fine Sand	0.16	10	10	0.083	8.3	0.24	Fine Sand
Medium Sand	0.25	10	10	0.083	8.3	0.37	Medium Sand
Coarse Sand	0.26	10	10	0.083	8.3	0.38	Coarse Sand
Gravelly Sand	0.26	10	10	0.083	8.3	0.38	Gravelly Sand
Fine Gravel	0.26	10	10	0.083	8.3	0.38	Fine Gravel
Medium Gravel	0.20	10	10	0.083	8.3	0.30	Medium Gravel
Coarse Gravel	0.18	36	36	0.042	54.432	1.75	Coarse Gravel
Sandstone	0.25	10	10	0.083	8.3	0.37	Sandstone
Siltstone	0.18	10	10	0.083	8.3	0.27	Siltstone
Shale	0.05	10	10	0.083	8.3	0.07	Shale
Limestone	0.13	10	10	0.083	8.3	0.19	Limestone
Basalt	0.19	10	10	0.083	8.3	0.28	Basalt
Volcanic Tuff	0.20	10	10	0.083	8.3	0.30	Volcanic Tuff
Standing Liquids	X	65	65	0.704	2974.4	530.20	Standing Liquids

1	2	3	4	5	6
0.083	0.166	0.250	0.332	0.415	0.500
7	8	9	10	11	12
0.581	0.664	0.750	0.830	0.913	1.000

NOTE: This is an **estimate** tool designed for quick field estimates of whether a C-141 should be required (i.e. a release is estimated to be greater than or less than 5 barrel volumes)

Choose the one prevailing ground type for estimating spill volumes at a single location.

Note that the depth should be measured in feet and tenths of feet (1 inch = .083)

Cubic Feet = L x W x D

Estimated Barrels = ((Cubic Feet x Porosity) / 5.61)

4,262sqft x 0.704ft average depth = 2,974.4cuft

Estimated Barrels Released: 530.20bbbl = (2,974.4cuft / 5.61)

Approved by: Fernando Rodriguez

Date: 12/3/2024

Sante Fe Main Office
Phone: (505) 476-3441

General Information
Phone: (505) 629-6116

Online Phone Directory
<https://www.emnrd.nm.gov/ocd/contact-us>

State of New Mexico
Energy, Minerals and Natural Resources
Oil Conservation Division
1220 S. St Francis Dr.
Santa Fe, NM 87505

QUESTIONS

Action 528110

QUESTIONS

Operator: Silverback Operating II, LLC 1001 W. Wilshire Blvd Oklahoma City, OK 73112	OGRID: 330968
	Action Number: 528110
	Action Type: [C-141] Initial C-141 (C-141-v-Initial)

QUESTIONS

Prerequisites	
Incident ID (n#)	nAPP2531825418
Incident Name	NAPP2531825418 SANTA FE LAND SWD #001 @ I-17-19S-26E
Incident Type	Produced Water Release
Incident Status	Initial C-141 Received

Location of Release Source	
<i>Please answer all the questions in this group.</i>	
Site Name	SANTA FE LAND SWD #001
Date Release Discovered	11/13/2025
Surface Owner	Private

Incident Details	
<i>Please answer all the questions in this group.</i>	
Incident Type	Produced Water Release
Did this release result in a fire or is the result of a fire	No
Did this release result in any injuries	No
Has this release reached or does it have a reasonable probability of reaching a watercourse	No
Has this release endangered or does it have a reasonable probability of endangering public health	No
Has this release substantially damaged or will it substantially damage property or the environment	No
Is this release of a volume that is or may with reasonable probability be detrimental to fresh water	No

Nature and Volume of Release	
<i>Material(s) released, please answer all that apply below. Any calculations or specific justifications for the volumes provided should be attached to the follow-up C-141 submission.</i>	
Crude Oil Released (bbls) Details	Not answered.
Produced Water Released (bbls) Details	Cause: Equipment Failure Tank (Any) Produced Water Released: 530 BBL Recovered: 530 BBL Lost: 0 BBL.
Is the concentration of chloride in the produced water >10,000 mg/l	Yes
Condensate Released (bbls) Details	Not answered.
Natural Gas Vented (Mcf) Details	Not answered.
Natural Gas Flared (Mcf) Details	Not answered.
Other Released Details	Not answered.
Are there additional details for the questions above (i.e. any answer containing Other, Specify, Unknown, and/or Fire, or any negative lost amounts)	Not answered.

Sante Fe Main Office
Phone: (505) 476-3441

General Information
Phone: (505) 629-6116

Online Phone Directory
<https://www.emnrd.nm.gov/ocd/contact-us>

State of New Mexico
Energy, Minerals and Natural Resources
Oil Conservation Division
1220 S. St Francis Dr.
Santa Fe, NM 87505

QUESTIONS, Page 2

Action 528110

QUESTIONS (continued)

Operator: Silverback Operating II, LLC 1001 W. Wilshire Blvd Oklahoma City, OK 73112	OGRID: 330968
	Action Number: 528110
	Action Type: [C-141] Initial C-141 (C-141-v-Initial)

QUESTIONS

Nature and Volume of Release (continued)	
Is this a gas only submission (i.e. only significant Mcf values reported)	No, according to supplied volumes this does not appear to be a "gas only" report.
Was this a major release as defined by Subsection A of 19.15.29.7 NMAC	Yes
Reasons why this would be considered a submission for a notification of a major release	From paragraph A. "Major release" determine using: (1) an unauthorized release of a volume, excluding gases, of 25 barrels or more.
<i>With the implementation of the 19.15.27 NMAC (05/25/2021), venting and/or flaring of natural gas (i.e. gas only) are to be submitted on the C-129 form.</i>	

Initial Response

The responsible party must undertake the following actions immediately unless they could create a safety hazard that would result in injury.

The source of the release has been stopped	True
The impacted area has been secured to protect human health and the environment	True
Released materials have been contained via the use of berms or dikes, absorbent pads, or other containment devices	True
All free liquids and recoverable materials have been removed and managed appropriately	True
If all the actions described above have not been undertaken, explain why	Not answered.

Per Paragraph (4) of Subsection B of 19.15.29.8 NMAC the responsible party may commence remediation immediately after discovery of a release. If remediation has begun, please prepare and attach a narrative of actions to date in the follow-up C-141 submission. If remedial efforts have been successfully completed or if the release occurred within a lined containment area (see Subparagraph (a) of Paragraph (5) of Subsection A of 19.15.29.11 NMAC), please prepare and attach all information needed for closure evaluation in the follow-up C-141 submission.

I hereby certify that the information given above is true and complete to the best of my knowledge and understand that pursuant to OCD rules and regulations all operators are required to report and/or file certain release notifications and perform corrective actions for releases which may endanger public health or the environment. The acceptance of a C-141 report by the OCD does not relieve the operator of liability should their operations have failed to adequately investigate and remediate contamination that pose a threat to groundwater, surface water, human health or the environment. In addition, OCD acceptance of a C-141 report does not relieve the operator of responsibility for compliance with any other federal, state, or local laws and/or regulations.

I hereby agree and sign off to the above statement	Name: Fernando Rodriguez Email: frodriguez@silverbackexp.com Date: 12/11/2025
--	---

Sante Fe Main Office
Phone: (505) 476-3441

General Information
Phone: (505) 629-6116

Online Phone Directory
<https://www.emnrd.nm.gov/ocd/contact-us>

**State of New Mexico
Energy, Minerals and Natural Resources
Oil Conservation Division
1220 S. St Francis Dr.
Santa Fe, NM 87505**

QUESTIONS, Page 3

Action 528110

QUESTIONS (continued)

Operator: Silverback Operating II, LLC 1001 W. Wilshire Blvd Oklahoma City, OK 73112	OGRID: 330968
	Action Number: 528110
	Action Type: [C-141] Initial C-141 (C-141-v-Initial)

QUESTIONS

Site Characterization	
<i>Please answer all the questions in this group (only required when seeking remediation plan approval and beyond). This information must be provided to the appropriate district office no later than 90 days after the release discovery date.</i>	
What is the shallowest depth to groundwater beneath the area affected by the release in feet below ground surface (ft bgs)	Not answered.
What method was used to determine the depth to ground water	Not answered.
Did this release impact groundwater or surface water	Not answered.
What is the minimum distance, between the closest lateral extents of the release and the following surface areas:	
A continuously flowing watercourse or any other significant watercourse	Not answered.
Any lakebed, sinkhole, or playa lake (measured from the ordinary high-water mark)	Not answered.
An occupied permanent residence, school, hospital, institution, or church	Not answered.
A spring or a private domestic fresh water well used by less than five households for domestic or stock watering purposes	Not answered.
Any other fresh water well or spring	Not answered.
Incorporated municipal boundaries or a defined municipal fresh water well field	Not answered.
A wetland	Not answered.
A subsurface mine	Not answered.
An (non-karst) unstable area	Not answered.
Categorize the risk of this well / site being in a karst geology	Not answered.
A 100-year floodplain	Not answered.
Did the release impact areas not on an exploration, development, production, or storage site	Not answered.

Remediation Plan	
<i>Please answer all the questions that apply or are indicated. This information must be provided to the appropriate district office no later than 90 days after the release discovery date.</i>	
Requesting a remediation plan approval with this submission	No
<i>The OCD recognizes that proposed remediation measures may have to be minimally adjusted in accordance with the physical realities encountered during remediation. If the responsible party has any need to significantly deviate from the remediation plan proposed, then it should consult with the division to determine if another remediation plan submission is required.</i>	

Sante Fe Main Office
Phone: (505) 476-3441

General Information
Phone: (505) 629-6116

Online Phone Directory
<https://www.emnrd.nm.gov/ocd/contact-us>

State of New Mexico
Energy, Minerals and Natural Resources
Oil Conservation Division
1220 S. St Francis Dr.
Santa Fe, NM 87505

CONDITIONS

Action 528110

CONDITIONS

Operator: Silverback Operating II, LLC 1001 W. Wilshire Blvd Oklahoma City, OK 73112	OGRID: 330968
	Action Number: 528110
	Action Type: [C-141] Initial C-141 (C-141-v-Initial)

CONDITIONS

Created By	Condition	Condition Date
nvez	None	12/11/2025

Sante Fe Main Office
Phone: (505) 476-3441

General Information
Phone: (505) 629-6116

Online Phone Directory
<https://www.emnrd.nm.gov/ocd/contact-us>

**State of New Mexico
Energy, Minerals and Natural Resources
Oil Conservation Division
1220 S. St Francis Dr.
Santa Fe, NM 87505**

QUESTIONS

Action 587757

QUESTIONS

Operator: RILEY PERMIAN OPERATING COMPANY, LLC 29 E Reno Avenue Oklahoma City, OK 73104	OGRID: 372290
	Action Number: 587757
	Action Type: [NOTIFY] Notification Of Liner Inspection (C-141L)

QUESTIONS

Prerequisites	
Incident ID (n#)	nAPP2531825418
Incident Name	NAPP2531825418 SANTA FE LAND SWD #001 @ I-17-19S-26E
Incident Type	Produced Water Release
Incident Status	Initial C-141 Approved

Location of Release Source	
Site Name	SANTA FE LAND SWD #001
Date Release Discovered	11/13/2025
Surface Owner	Private

Liner Inspection Event Information	
<i>Please answer all the questions in this group.</i>	
What is the liner inspection surface area in square feet	4,000
Have all the impacted materials been removed from the liner	Yes
Liner inspection date pursuant to Subparagraph (a) of Paragraph (5) of Subsection A of 19.15.29.11 NMAC	05/27/2026
Time liner inspection will commence	09:00 AM
Please provide any information necessary for observers to liner inspection	Contact: Fernando Rodriguez @ 575.231.5961
Please provide any information necessary for navigation to liner inspection site	Location is off the intersection of US Hwy 285 S and W Rocking R Red Road at coordinates: 32.657864, -104.397456

Sante Fe Main Office
Phone: (505) 476-3441

General Information
Phone: (505) 629-6116

Online Phone Directory
<https://www.emnrd.nm.gov/ocd/contact-us>

State of New Mexico
Energy, Minerals and Natural Resources
Oil Conservation Division
1220 S. St Francis Dr.
Santa Fe, NM 87505

CONDITIONS

Action 587757

CONDITIONS

Operator: RILEY PERMIAN OPERATING COMPANY, LLC 29 E Reno Avenue Oklahoma City, OK 73104	OGRID: 372290
	Action Number: 587757
	Action Type: [NOTIFY] Notification Of Liner Inspection (C-141L)

CONDITIONS

Created By	Condition	Condition Date
frodriguez01	Failure to notify the OCD of liner inspections including any changes in date/time per the requirements of 19.15.29.11.A(5)(a)(ii) NMAC, may result in the inspection not being accepted.	5/22/2026



Liner Integrity Certification

The following serves to verify that the affected liner has been inspected and found to be in serviceable condition in accordance with 19.15.29.11 A.(5)(a)(i-ii) of the New Mexico Administrative Code.

Facility ID:

Date: 05.27.2026

Incident ID(s): nAPP2531825418

- Responsible Party has visually inspected the liner.
- Liner remains intact and was able to contain the leak in question.
- At least two business days' notice was given to the appropriate division district office before conducting the liner inspection.
- Photographs illustrating liner integrity are included.

APPENDIX C



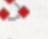
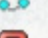
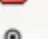

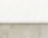
CARMONA RESOURCES

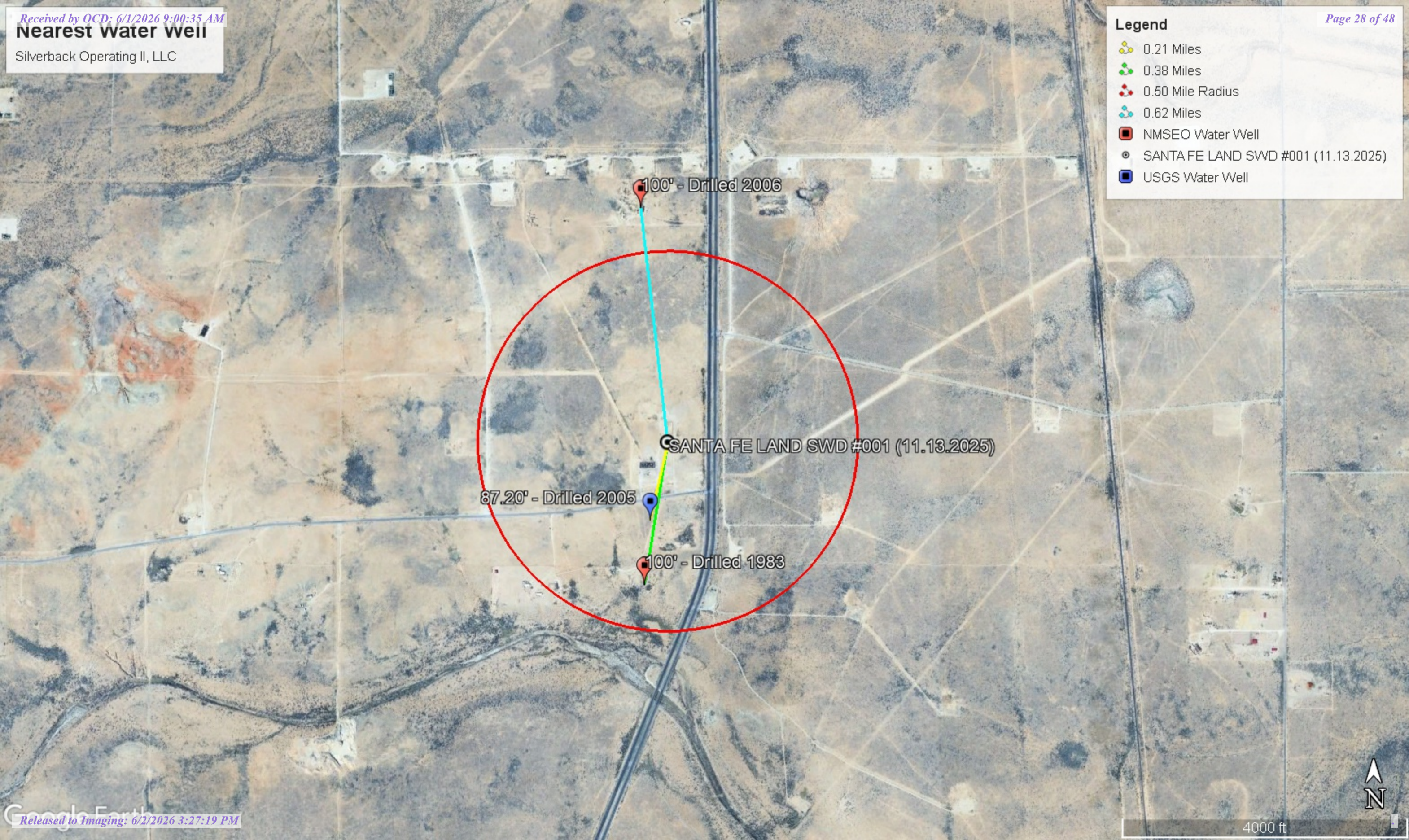


Nearest water well

Silverback Operating II, LLC

Legend

-  0.21 Miles
-  0.38 Miles
-  0.50 Mile Radius
-  0.62 Miles
-  NMSEO Water Well
-  SANTA FE LAND SWD #001 (11.13.2025)
-  USGS Water Well



100' - Drilled 2006

SANTA FE LAND SWD #001 (11.13.2025)

87.20' - Drilled 2005



100' - Drilled 1983



Medium Karst

Silverback Operating II, LLC

Legend

-  Medium
-  SANTA FE LAND SWD #001 (11.13.2025)

SANTA FE LAND SWD #001 (11.13.2025)



4000 ft



New Mexico Office of the State Engineer

Water Column/Average Depth to Water

(A CLW##### in the POD suffix indicates the POD has been replaced & no longer serves a water right file.) (R=POD has been replaced, O=orphaned, C=the file is closed)

(quarters are smallest to largest)

(meters) (In feet)

POD Number	Code	Sub basin	County	Q64	Q16	Q4	Sec	Tws	Range	X	Y	Map	Distance	Well Depth	Depth Water	Water Column
RA 07128		RA	ED	NW	NE	NE	20	19S	26E	556404.0	3612913.0 *	●	614	134	100	34
RA 01982		RA	ED	NE	NE	NE	20	19S	26E	556604.0	3612913.0 *	●	614	110	45	65
RA 08074		RA	ED	NE	NE	NE	20	19S	26E	556688.4	3612860.2	●	684	218	90	128
RA 05916		RA	ED		NE	NE	20	19S	26E	556505.0	3612814.0 *	●	705	102	25	77
RA 11018 POD1		RA	ED	NW	NE	NE	17	19S	26E	556379.0	3614508.1	●	996	260	100	160
RA 05037		RA	ED		NW	NE	17	19S	26E	556091.0	3614436.0 *	●	1005	475		
RA 09050		RA	ED				20	19S	26E	555904.0	3612208.0 *	●	1441	160	105	55
RA 13420 POD1		RA	ED	SW	SE	SW	08	19S	26E	555517.0	3614656.6	●	1505	55		
RA 10262		RA	ED	NE	NE	NE	19	19S	26E	554994.0	3612917.0 *	●	1624	200	85	115
RA 09451		RA	ED	NW	SW	SE	20	19S	26E	556006.0	3611701.0 *	●	1884	200		
RA 07817	R	RA	ED	NE	NW	NE	19	19S	26E	554592.0	3612915.0 *	●	2004	300	220	80
RA 07817 CLW	O	RA	ED	NE	NW	NE	19	19S	26E	554592.0	3612915.0 *	●	2004	275	130	145
RA 07817 POD2		RA	ED	NE	NW	NE	19	19S	26E	554592.0	3612915.0 *	●	2004	275	130	145
RA 09077		RA	ED	NE	NW	NE	19	19S	26E	554592.0	3612915.0 *	●	2004	200		
RA 02391 POD1	O	RA	ED	NE	SE	SW	21	19S	26E	557416.0	3611696.0 *	●	2038	200		
RA 12362 POD1		RA	ED	NW	NE	NW	22	19S	26E	558837.8	3612975.8	●	2397	140	79	61
RA 10531		RA	ED	SE	SW	SE	21	19S	26E	557820.0	3611493.0 *	●	2416	140	90	50
RA 12156 POD1		RA	ED	NW	NE	NW	22	19S	26E	558807.9	3612789.3	●	2417	160	85	75
RA 01215		RA	ED	SE	SW	SW	10	19S	26E	558603.0	3614739.0 *	●	2428	1192		
RA 04425		RA	ED		SE	SW	15	19S	26E	558923.0	3613208.0 *	●	2439	117	80	37
RA 08858		RA	ED		NE	NW	28	19S	26E	557317.0	3611195.0 *	●	2462	197	80	117
RA 09988		RA	ED	NE	SE	NW	19	19S	26E	554190.0	3612507.0 *	●	2524	100	65	35
RA 07503		RA	ED		NE	NW	22	19S	26E	558925.0	3612804.0 *	●	2525	118	83	35
RA 12555 POD1		RA	ED	NE	NE	NW	22	19S	26E	558975.4	3612926.4	●	2542	126	98	28
RA 12176 POD1		RA	ED	NE	NE	NW	22	19S	26E	558994.2	3612829.6	●	2584	160	76	84
RA 08612		RA	ED	NW	NE	NW	19	19S	26E	553989.0	3612912.0 *	●	2586	221	80	141
RA 12145 POD1		RA	ED	NE	NE	NW	22	19S	26E	559007.6	3612852.7	●	2591	200	75	125
RA 09950		RA	ED	SE	NE	NW	22	19S	26E	559024.0	3612703.0 *	●	2649	145	72	73
RA 12206 POD1		RA	ED	NE	NE	NW	22	19S	26E	559105.3	3612988.8	●	2655	160	67	93
RA 13360 POD1		RA	ED	SW	NW	SE	22	19S	26E	559182.5	3613586.7	●	2680	110	55	55
RA 06813		RA	ED	NW	NW	NW	09	19S	26E	556848.2	3616179.2	●	2682	171	97	74
RA 07148		RA	ED	NE	NE	NE	28	19S	26E	558224.0	3611292.0 *	●	2814	160		
RA 09317		RA	ED			SW	22	19S	26E	558731.0	3611791.0 *	●	2819	175	70	105
RA 12928 POD1		RA	ED	NW	SW	NE	22	19S	26E	559165.5	3612487.2	●	2855	118	96	22
RA 06588		RA	ED	SE	SW	SE	05	19S	26E	556173.0	3616360.0 *	●	2860	200		
RA 01343		RA	ED	NE	NW	NW	18	19S	26E	553777.0	3614525.0 *	●	2905	440	69	371
RA 06129		RA	ED		SE	SE	05	19S	26E	556477.0	3616462.0 *	●	2943	190	90	100
RA 08567		RA	ED		SE	SE	05	19S	26E	556477.0	3616462.0 *	●	2943	264	80	184
RA 12339 POD1		RA	ED	NW	SW	NE	22	19S	26E	559283.0	3612494.1	●	2962	120	103	17
RA 08611		RA	ED	NW	NW	NW	19	19S	26E	553583.0	3612909.0 *	●	2983	235	90	145
RA 04272		RA	ED	NE	SE	SE	05	19S	26E	556576.0	3616561.0 *	●	3042	102	58	44

(A CLW##### in the (R=POD has been replaced, O=orphaned, C=the file is closed)
 POD suffix indicates the POD has been replaced & no longer serves a water right file.)

(quarters are smallest to largest)

(meters) (In feet)

POD Number	Code	Sub basin	County	Q64	Q16	Q4	Sec	Tws	Range	X	Y	Map	Distance	Well Depth	Depth Water	Water Column
RA 03564		RA	ED		NW	NW	10	19S	26E	558491.0	3616060.0 *	●	3226	200	70	130
RA 07124	O	RA	CH	SE	NE	SE	05	19S	26E	556571.0	3616765.0 *	●	3246	133	94	39
RA 12679 POD1		RA	ED	NW	NE	NW	27	19S	26E	558933.9	3611348.6	●	3258	160	80	80
RA 07172		RA	ED	SW	NW	SE	05	19S	26E	556051.0	3616748.0	●	3260	210		
RA 12682		RA	ED	NW	NE	NW	27	19S	26E	558869.3	3611261.1	●	3270	180	80	100
RA 09294		RA	ED	SW	SE	SE	13	19S	25E	553180.0	3613114.0 *	●	3347	194	76	118
RA 07954		RA	ED	SW	NE	SW	05	19S	26E	555614.6	3616760.4	●	3360	290	175	115
RA 01215 CLW		RA	ED	NE	NW	NW	10	19S	26E	558590.0	3616159.0 *	●	3365	880	50	830
RA 01215 CLWPU		RA	ED	NE	NW	NW	10	19S	26E	558590.0	3616159.0 *	●	3365	1000		
RA 03118		RA	ED	NE	NW	NW	10	19S	26E	558590.0	3616159.0 *	●	3365	195		
RA 06986		RA	ED		NW	SE	05	19S	26E	556070.0	3616865.0 *	●	3373	195	165	30
RA 07239		RA	ED	NE	NE	SE	05	19S	26E	556489.0	3616951.0	●	3432	191		
RA 08557		RA	ED	NE	NW	SE	05	19S	26E	556103.7	3616950.4	●	3454	232	100	132
RA 03168		RA	ED	NW	NW	SW	04	19S	26E	556774.0	3616966.0 *	●	3457	150	70	80
RA 09293		RA	ED	SE	SW	SE	13	19S	25E	553064.4	3613109.1	●	3462	190	60	130
RA 12627 POD1		RA	ED	NW	NE	SE	05	19S	26E	556414.8	3617007.3	●	3489	220	100	120
RA 10917 POD1		RA	ED	NW	SE	SW	28	19S	26E	557218.0	3610091.0 *	●	3501	1003	89	914
RA 12238 POD1		RA	ED	NE	SE	SE	04	19S	26E	558179.9	3616638.7	●	3541	171	154	17
RA 09295		RA	ED	SE	SW	SE	13	19S	25E	552979.0	3613115.0 *	●	3547	196	85	111
RA 06995		RA	ED		NW	SE	04	19S	26E	557679.0	3616869.0 *	●	3550	150	100	50
RA 00797		RA	ED	SW	SW	SW	14	19S	26E	560038.0	3613097.0 *	●	3560			
RA 04799		RA	ED	SE	SW	NW	27	19S	26E	558723.7	3610723.5	●	3570	106	52	54
RA 00787		RA	ED		SE	SW	28	19S	26E	557319.0	3609992.0 *	●	3620			
RA 09838		RA	ED		SE	NW	27	19S	26E	558934.0	3610792.0 *	●	3653	123	60	63
RA 04421		RA	ED	SW	SE	NW	27	19S	26E	558833.0	3610691.0 *	●	3664	150	49	101
RA 01680	O	RA	ED	NE	SW	SE	28	19S	26E	557821.0	3610092.0 *	●	3671	220		
RA 01149		RA	ED	NW	SW	NW	23	19S	26E	560043.0	3612494.0 *	●	3685	702	80	622
RA 01958		RA	ED	NW	SW	NW	23	19S	26E	560043.0	3612494.0 *	●	3685	920		
RA 02249		RA	ED	NW	SW	NW	23	19S	26E	560043.0	3612494.0 *	●	3685	920	72	848
RA 12324 POD1		RA	ED	SW	SE	NE	05	19S	26E	556338.2	3617207.0	●	3691	235	185	50
RA 03810		RA	ED	NE	NW	SW	27	19S	26E	558628.0	3610493.0 *	●	3697	128	45	83
RA 07324		RA	ED		NE	SE	04	19S	26E	558080.0	3616870.0 *	●	3703	150	105	45
RA 07066 POD2		RA	ED	SE	SE	NW	05	19S	26E	555782.7	3617156.2	●	3707	150		
RA 07053		RA	ED		SE	NE	05	19S	26E	556468.0	3617271.0 *	●	3752	135	90	45
RA 07142		RA	ED		SE	NE	05	19S	26E	556468.0	3617271.0 *	●	3752	217	98	119
RA 07448		RA	ED		SE	NE	05	19S	26E	556468.0	3617271.0 *	●	3752	207	105	102
RA 09276		RA	ED		SE	NE	05	19S	26E	556468.0	3617271.0 *	●	3752	280	100	180
RA 10318		RA	ED		SE	NE	05	19S	26E	556468.0	3617271.0 *	●	3752	240	100	140
RA 07066	R	RA	ED	SW	SE	NW	05	19S	26E	555561.0	3617166.0 *	●	3766	202	100	102
RA 09549		RA	ED	NW	NW	NE	10	19S	26E	559195.0	3616159.0 *	●	3770	189	90	99
RA 07508		RA	ED		SW	NE	05	19S	26E	556065.0	3617269.0 *	●	3775	185	150	35
RA 10133		RA	ED		SW	NE	05	19S	26E	556065.0	3617269.0 *	●	3775	177	138	39
RA 11482 POD1		RA	ED	SE	SE	NW	27	19S	26E	559085.2	3610740.4	●	3793	159	138	21
RA 07165		RA	ED	NE	SW	NE	05	19S	26E	556117.0	3617312.0	●	3812	193		
RA 03200		RA	ED	NE	SE	SE	28	19S	26E	558225.0	3610093.0 *	●	3834	1000		

(A CLW##### in the (R=POD has
 POD suffix indicates been
 the POD has been replaced,
 replaced O=orphaned,
 & no longer serves a C=the file is
 water right file.) closed)

(quarters are
 smallest to
 largest)

(meters) (In feet)

POD Number	Code	Sub basin	County	Q64	Q16	Q4	Sec	Tws	Range	X	Y	Map	Distance	Well Depth	Depth Water	Water Column
RA 03176		RA	ED	NW	NE	NE	27	19S	26E	559642.0	3611290.0 *	●	3849	1000		
RA 11036 POD1		RA	ED	NE	SE	NE	05	19S	26E	556567.0	3617370.0 *	●	3851	210	110	100
RA 01728		RA	ED	NE	NW	NW	14	19S	26E	560223.0	3614525.0 *	●	3853	70		
RA 12364 POD1		RA	ED	NE	NE	SE	04	19S	26E	558223.7	3616984.5	●	3869	195	155	40
RA 08962		RA	ED	NE	NE	NW	32	19S	26E	555810.0	3609680.0 *	●	3901	300	180	120
RA 13516 POD1		RA	ED	SW	SW	NE	27	19S	26E	559287.4	3610784.7	●	3902	140	105	35
RA 04581		RA	ED				27	19S	26E	559132.0	3610598.0 *	●	3929	70	20	50
RA 09683		RA	ED	NE	NE	SW	27	19S	26E	559104.7	3610530.8	●	3962	120	50	70
RA 06431		RA	ED			NW	04	19S	26E	557071.0	3617473.0 *	●	3994			

Average Depth to Water: **93 feet**

Minimum Depth: **20 feet**

Maximum Depth: **220 feet**

Record Count: 95

UTM Filters (in meters):

Easting: 556503.00

Northing: 3613519.00

Radius: 4000

* UTM location was derived from PLSS - see Help

The data is furnished by the NMOSE/ISC and is accepted by the recipient with the expressed understanding that the OSE/ISC make no warranties, expressed or implied, concerning the accuracy, completeness, reliability, usability, or suitability for any particular purpose of the data.

Monitoring location

19S.26E.20.22110 - USGS-323917104235201

Important for you to know:

- USGS will be performing maintenance on WDFN webpages beginning Tuesday, May 26. If you cannot access the page you are intending or are unexpectedly redirected to a different page, please reach out to wdfn@usgs.gov for assistance.



DID YOU KNOW You can see all water data collected at this monitoring location in the *Available data* section of the page. Learn more about [centralized water data delivery](#) in WDFN.



1 year
 10 years
 Period of record

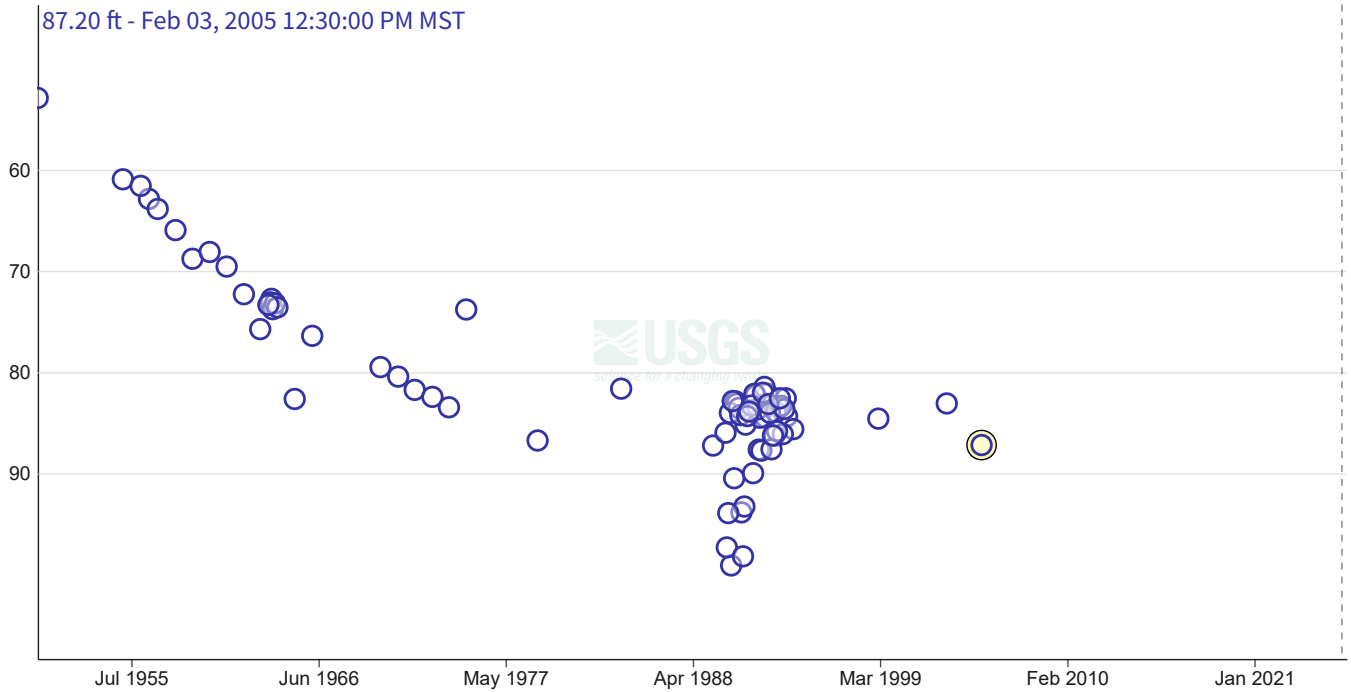
Scale Linear Log

Field measurements

19S.26E.20.22110 - USGS-323917104235201

January 16, 1950 - May 19, 2026
 Depth to water level, feet below land surface

87.20 ft - Feb 03, 2005 12:30:00 PM MST



IMPORTANT Data may be [provisional](#)

[Show legend](#) ▾

[Hide graph details](#) ^

	Value	Status	
<input checked="" type="radio"/> Selected field measurement	87.20	Approved Static	Feb 03, 2005 12:30:00 PM MST

[Hide graph details](#) ^

Change time span

Download data

View tabular data

Questions or Comments

Available data

Select data types to graph from categories based on the way the data were collected. Learn about the data collection categories

Expand all data collections

Continuous data

0 data types available

Daily data

0 data types available

Field measurements

3 data types available - data from 1950-01-16 to 2005-02-03

Hide these data types

Field measurements are physically measured values collected during a visit to the monitoring location.

[Learn about Field measurements](#)

	Data type	Data date range
Graphed	Depth to water level, feet below land surface	1950-01-16 2005-02-03
Graph it	Groundwater level above NAVD 1988, feet	1950-01-16 2005-02-03
Graph it	Groundwater level above NGVD 1929, feet	1950-01-16 2005-02-03

[Hide these data types](#)

Discrete sample data

0 observed properties (data types) available

Statistical tables for select daily data types

0 data types available

Location details and information

Show location details

Monitoring locations with continuous data in last 120 days

4 locations found

[View these locations in My Favorites](#)

[Use Explore USGS Water Data to discover additional data near this location](#)



Legend

- Monitoring Location
- Active Monitoring Locations

5 km
3 mi

Interested in understanding how to access the upstream/downstream data? [Learn about the Network-Linked Data Index \(NLDI\).](#)

[DOI Privacy Policy](#) | [Legal](#) | [Accessibility](#) | [Site Map](#) | [Contact USGS](#)

Follow [-](#) [-](#) [-](#) [-](#) [-](#)

[U.S. Department of the Interior](#) | [DOI Inspector General](#) | [White House](#) | [No Fear Act](#) | [FOIA](#)

Revised June 1972

STATE ENGINEER OFFICE STATE ENGINEER
WELL RECORD SANTA FE, N. M.

LOG FILED

Section 1. GENERAL INFORMATION

28 APR 28 AM 10 43

RA

(A) Owner of well Joe Cox Owner's Well No. C 7128
Street or Post Office Address c/o Gregory Enterprises, P. O. Drawer U
City and State Carlsbad, N.M. 88220

Well was drilled under Permit No. C 7128 and is located in the:

- a. NW ¼ NE ¼ NE ¼ ¼ of Section 20 Township 19S Range 26E N.M.P.M.
- b. Tract No. _____ of Map No. _____ of the _____
- c. Lot No. _____ of Block No. _____ of the _____
Subdivision, recorded in Eddy County.
- d. X= _____ feet, Y= _____ feet, N.M. Coordinate System _____ Zone in the _____ Grant.

(B) Drilling Contractor Jenkins Bros. Drilling Co. License No. WD 460
Address 1418 W. Orchard Lane, Carlsbad, N.M. 88220

Drilling Began 2-10-83 Completed 3-21-83 Type tools Cable Size of hole 8 in.

Elevation of land surface or _____ at well is _____ ft. Total depth of well _____ ft.

Completed well is shallow artesian. Depth to water upon completion of well 100 ft.

Section 2. PRINCIPAL WATER-BEARING STRATA

Depth in Feet		Thickness in Feet	Description of Water-Bearing Formation	Estimated Yield (gallons per minute)
From	To			
112	120	8	Water, Sand and Gravel	10 Gal.

Section 3. RECORD OF CASING

Diameter (inches)	Pounds per foot	Threads per in.	Depth in Feet		Length (feet)	Type of Shoe	Perforations	
			Top	Bottom			From	To
6 5/8	12	N/A	0	134	40	N/A	94	134

Section 4. RECORD OF MUDDING AND CEMENTING

Depth in Feet		Hole Diameter	Sacks of Mud	Cubic Feet of Cement	Method of Placement
From	To				

Section 5. PLUGGING RECORD

Plugging Contractor _____
Address _____
Plugging Method _____
Date Well Plugged _____
Plugging approved by: _____

No.	Depth in Feet		Cubic Feet of Cement
	Top	Bottom	
1			
2			
3			
4			

State Engineer Representative

FOR USE OF STATE ENGINEER ONLY

Date Received **March 30, 1983**

Quad _____ FWL _____ FSL _____

File No. **RA-7128**

Use **Stock & More** than one Household location No. **19.26.20.22113**

STATE ENGINEER OFFICE
WELL RECORD

Section 1. GENERAL INFORMATION

(A) Owner of well Michael Quinones Owner's Well No. _____
Street or Post Office Address 3613 W. Quay
City and State Artesia, NM 88210

Well was drilled under Permit No. RA-11018 and is located in the:
a. SW ¼ SE ¼ NE ¼ _____ ¼ of Section 17 Township 19 S Range 26 E N.M.P.M.
b. Tract No. _____ of Map No. _____ of the _____
c. Lot No. _____ of Block No. _____ of the _____
Subdivision, recorded in _____ County.
d. X= _____ feet, Y= _____ feet, N.M. Coordinate System _____ Zone in
the _____ Grant.

(B) Drilling Contractor HOPPER PUMP & DRILLING License No. WD-1632
Address 1002 W. Pine Lodge Rd. Roswell, NM 88201
Drilling Began 8-8-06 Completed 8-10-06 Type tools Rotary Size of hole 8 3/4 in.
Elevation of land surface or _____ at well is _____ ft. Total depth of well 260 ft.
Completed well is shallow artesian. Depth to water upon completion of well 100 ft.

Section 2. PRINCIPAL WATER-BEARING STRATA

Depth in Feet		Thickness in Feet	Description of Water-Bearing Formation	Estimated Yield (gallons per minute)
From	To			
<u>100</u>	<u>130</u>	<u>30</u>	<u>Brown Sand</u>	<u>4</u>

Section 3. RECORD OF CASING

Diameter (inches)	Pounds per foot	Threads per in.	Depth in Feet		Length (feet)	Type of Shoe	Perforations	
			Top	Bottom			From	To
<u>5</u>	<u>PVC</u>	<u>N/A</u>	<u>+2</u>	<u>260</u>	<u>262</u>	<u>N/A</u>	<u>100</u>	<u>260</u>

Section 4. RECORD OF MUDDING AND CEMENTING

Depth in Feet		Hole Diameter	Sacks of Mud	Cubic Feet of Cement	Method of Placement
From	To				
<u>5</u>	<u>25</u>	<u>8 3/4</u>			

Section 5. PLUGGING RECORD

Plugging Contractor _____
Address _____
Plugging Method _____
Date Well Plugged _____
Plugging approved by: _____
State Engineer Representative

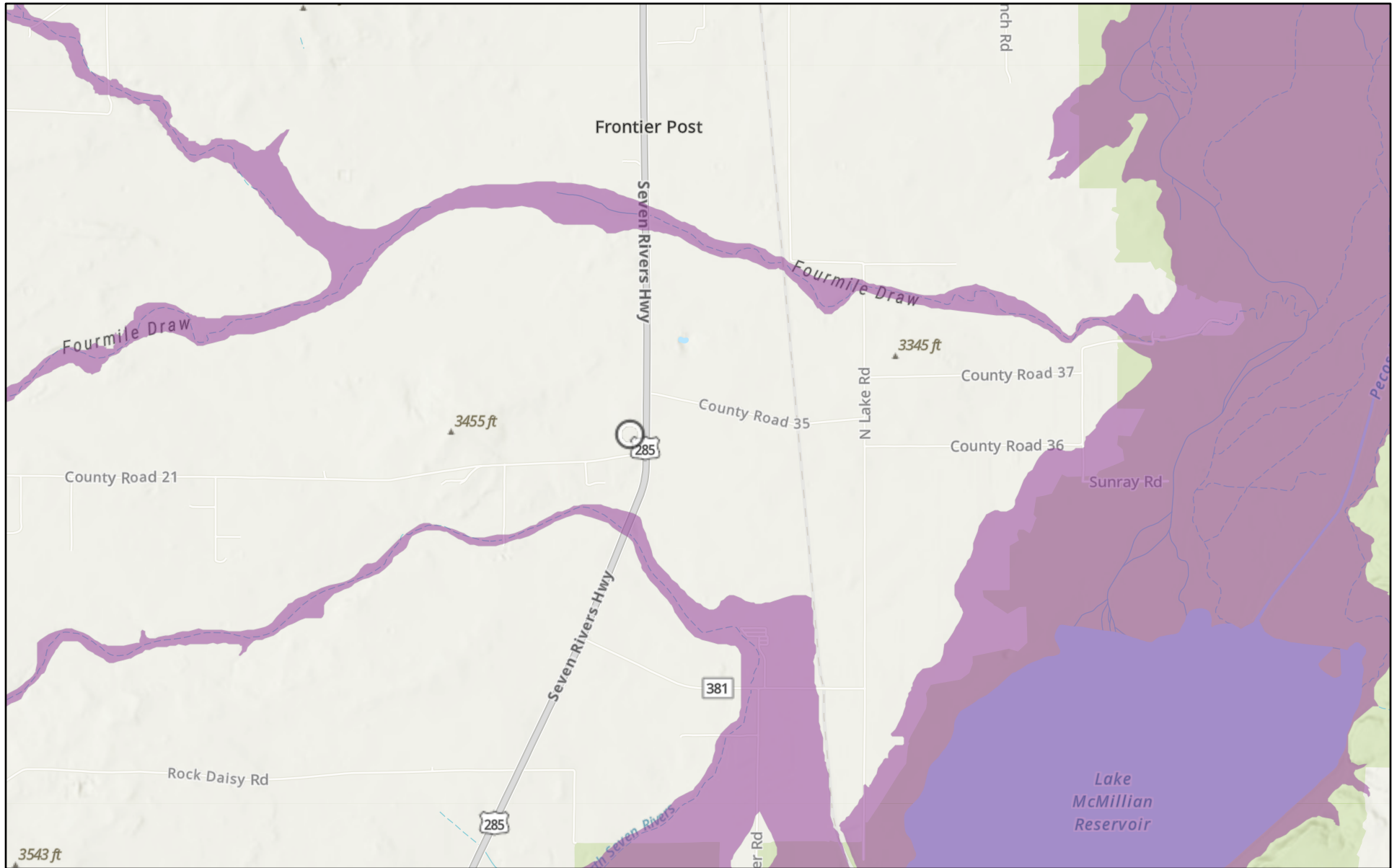
No.	Depth in Feet		Cubic Feet of Cement
	Top	Bottom	
<u>1</u>			
<u>2</u>			
<u>3</u>			
<u>4</u>			

FOR USE OF STATE ENGINEER ONLY

Date Received 8-17-06 Quad _____ FWL _____ FSL _____
File No. RA-11018 Use DOM Location No. 19.26.17.243

2006 AUG 17 PM 3:11
 STATE ENGINEER OFFICE
 ROSWELL, NM 88203

SANTA FE LAND SWD #001 (11.13.2025)

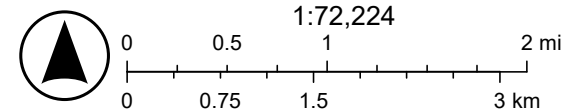


5/19/2026

USA Flood Hazard Areas

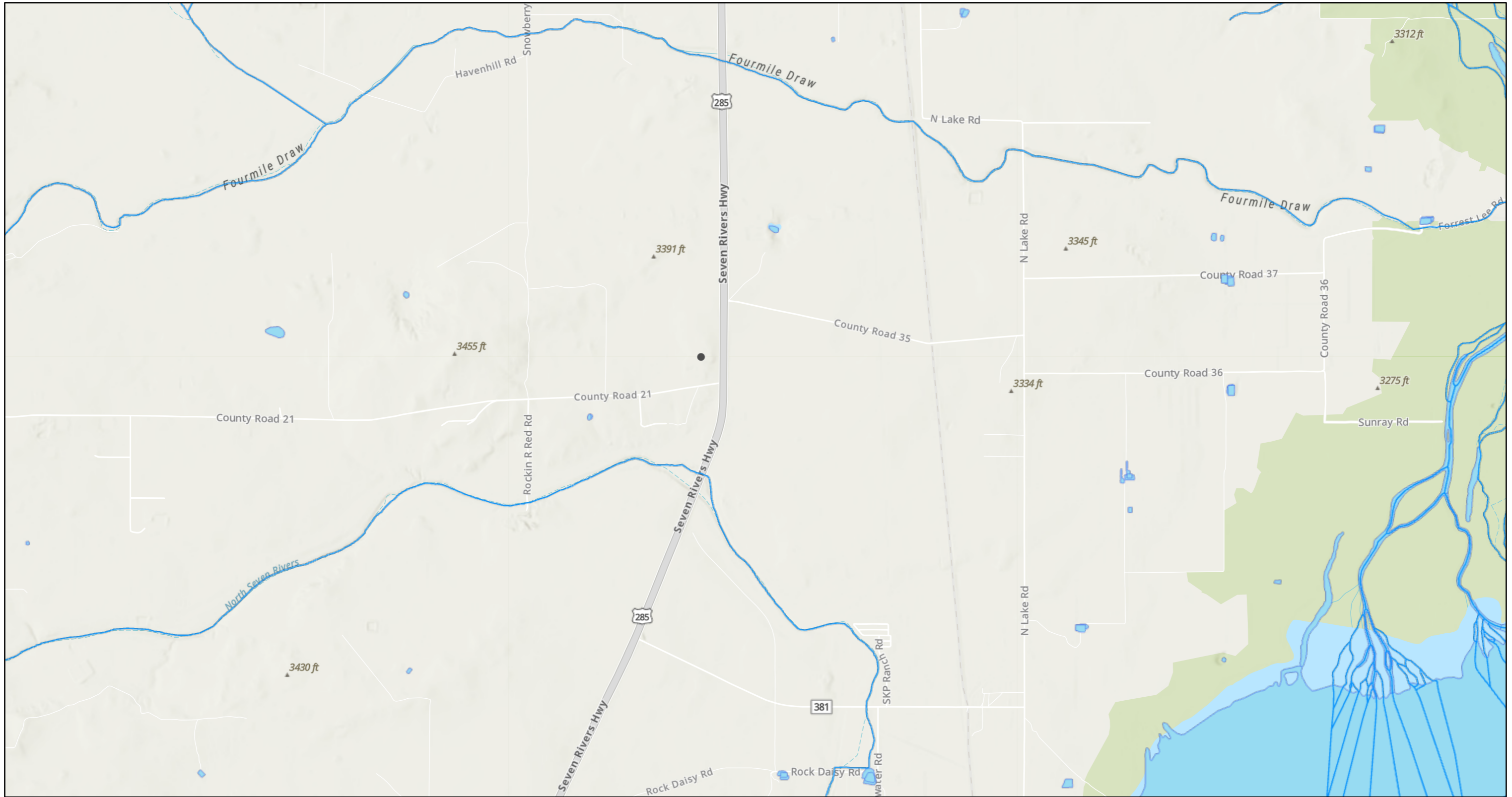
1% Annual Chance Flood Hazard

World_Hillshade



Source: FEMA, Esri, Sources: Esri, TomTom, Garmin, FAO, NOAA, USGS, (c) OpenStreetMap contributors, and the GIS User Community, Esri, NASA,

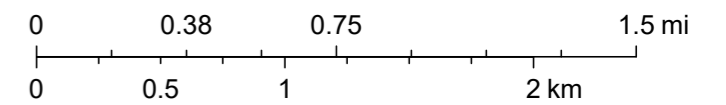
SANTA FE LAND SWD #001 (11.13.2025)



5/19/2026, 10:55:21 AM

- OSW Water Bodys
- OSE Streams

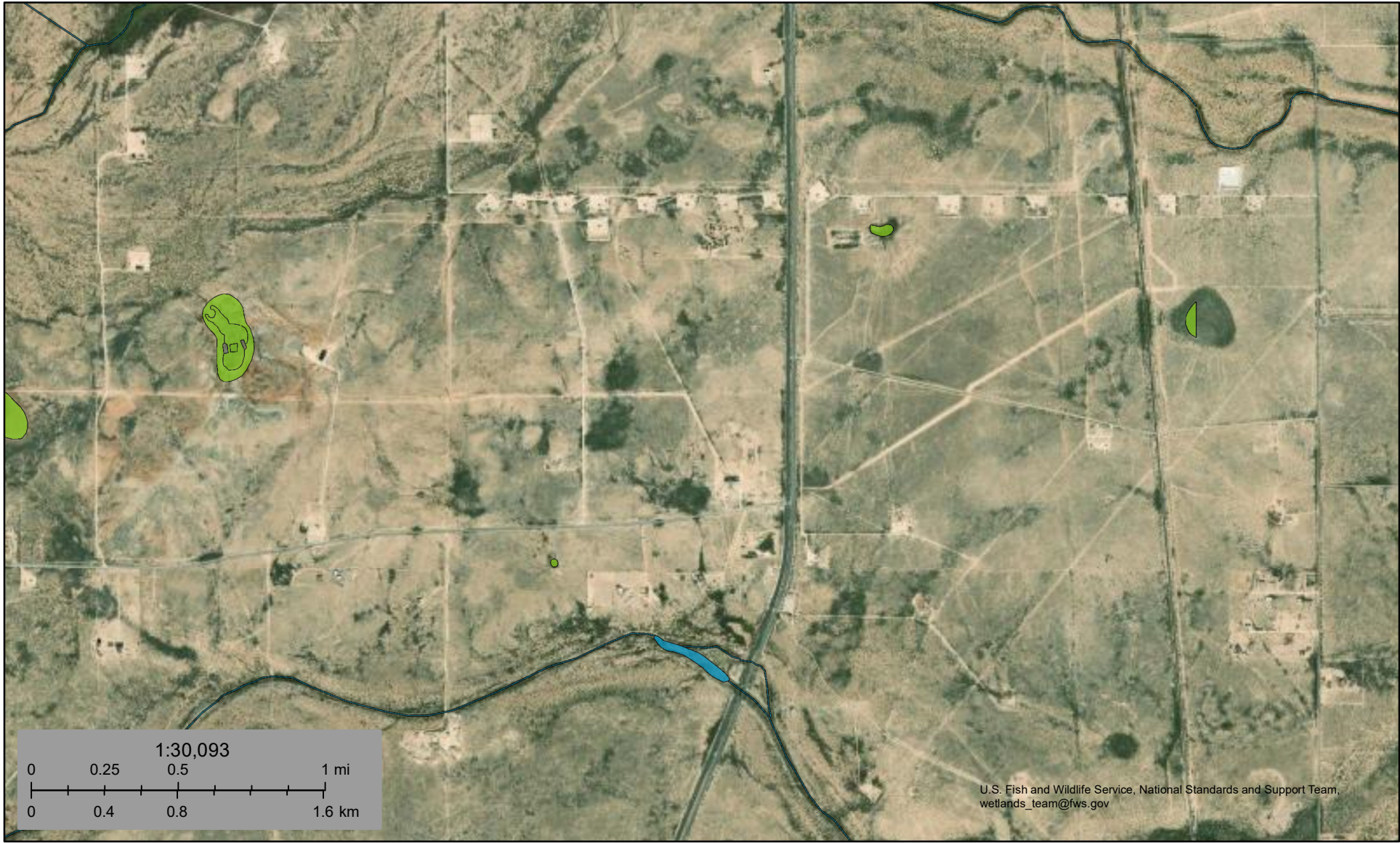
1:36,112



NM OSE, Sources: Esri, TomTom, Garmin, FAO, NOAA, USGS, © OpenStreetMap contributors, and the GIS User Community, Esri, NASA, NGA, USGS, FEMA



SANTA FE LAND SWD #001 (11.13.2025)



U.S. Fish and Wildlife Service, National Standards and Support Team, wetlands_team@fws.gov

May 19, 2026

Wetlands

- Estuarine and Marine Deepwater
- Estuarine and Marine Wetland

- Freshwater Emergent Wetland
- Freshwater Forested/Shrub Wetland
- Freshwater Pond

- Lake
- Other
- Riverine

This map is for general reference only. The US Fish and Wildlife Service is not responsible for the accuracy or currentness of the base data shown on this map. All wetlands related data should be used in accordance with the layer metadata found on the Wetlands Mapper web site.

Sante Fe Main Office
Phone: (505) 476-3441

General Information
Phone: (505) 629-6116

Online Phone Directory
<https://www.emnrd.nm.gov/ocd/contact-us>

State of New Mexico
Energy, Minerals and Natural Resources
Oil Conservation Division
1220 S. St Francis Dr.
Santa Fe, NM 87505

QUESTIONS

Action 589500

QUESTIONS

Operator: RILEY PERMIAN OPERATING COMPANY, LLC 29 E Reno Avenue Oklahoma City, OK 73104	OGRID: 372290
	Action Number: 589500
	Action Type: [C-141] Remediation Closure Request C-141 (C-141-v-Closure)

QUESTIONS

Prerequisites	
Incident ID (n#)	nAPP2531825418
Incident Name	NAPP2531825418 SANTA FE LAND SWD #001 @ I-17-19S-26E
Incident Type	Produced Water Release
Incident Status	Remediation Closure Report Received

Location of Release Source	
<i>Please answer all the questions in this group.</i>	
Site Name	SANTA FE LAND SWD #001
Date Release Discovered	11/13/2025
Surface Owner	Private

Incident Details	
<i>Please answer all the questions in this group.</i>	
Incident Type	Produced Water Release
Did this release result in a fire or is the result of a fire	No
Did this release result in any injuries	No
Has this release reached or does it have a reasonable probability of reaching a watercourse	No
Has this release endangered or does it have a reasonable probability of endangering public health	No
Has this release substantially damaged or will it substantially damage property or the environment	No
Is this release of a volume that is or may with reasonable probability be detrimental to fresh water	No

Nature and Volume of Release	
<i>Material(s) released, please answer all that apply below. Any calculations or specific justifications for the volumes provided should be attached to the follow-up C-141 submission.</i>	
Crude Oil Released (bbls) Details	Not answered.
Produced Water Released (bbls) Details	Cause: Equipment Failure Tank (Any) Produced Water Released: 530 BBL Recovered: 530 BBL Lost: 0 BBL.
Is the concentration of chloride in the produced water >10,000 mg/l	Yes
Condensate Released (bbls) Details	Not answered.
Natural Gas Vented (Mcf) Details	Not answered.
Natural Gas Flared (Mcf) Details	Not answered.
Other Released Details	Not answered.
Are there additional details for the questions above (i.e. any answer containing Other, Specify, Unknown, and/or Fire, or any negative lost amounts)	Downhole pump went down due to logical error and failed to kick on pump causing tanks to overflow and released produced water into lined containment. Vacuum trucks were brought to site to pick up free fluids and manage appropriately.

Sante Fe Main Office
Phone: (505) 476-3441

General Information
Phone: (505) 629-6116

Online Phone Directory
<https://www.emnrd.nm.gov/ocd/contact-us>

State of New Mexico
Energy, Minerals and Natural Resources
Oil Conservation Division
1220 S. St Francis Dr.
Santa Fe, NM 87505

QUESTIONS, Page 2

Action 589500

QUESTIONS (continued)

Operator: RILEY PERMIAN OPERATING COMPANY, LLC 29 E Reno Avenue Oklahoma City, OK 73104	OGRID: 372290
	Action Number: 589500
	Action Type: [C-141] Remediation Closure Request C-141 (C-141-v-Closure)

QUESTIONS

Nature and Volume of Release (continued)	
Is this a gas only submission (i.e. only significant Mcf values reported)	No, according to supplied volumes this does not appear to be a "gas only" report.
Was this a major release as defined by Subsection A of 19.15.29.7 NMAC	Yes
Reasons why this would be considered a submission for a notification of a major release	From paragraph A. "Major release" determine using: (1) an unauthorized release of a volume, excluding gases, of 25 barrels or more.
<i>With the implementation of the 19.15.27 NMAC (05/25/2021), venting and/or flaring of natural gas (i.e. gas only) are to be submitted on the C-129 form.</i>	

Initial Response

The responsible party must undertake the following actions immediately unless they could create a safety hazard that would result in injury.

The source of the release has been stopped	True
The impacted area has been secured to protect human health and the environment	True
Released materials have been contained via the use of berms or dikes, absorbent pads, or other containment devices	True
All free liquids and recoverable materials have been removed and managed appropriately	True
If all the actions described above have not been undertaken, explain why	Not answered.

Per Paragraph (4) of Subsection B of 19.15.29.8 NMAC the responsible party may commence remediation immediately after discovery of a release. If remediation has begun, please prepare and attach a narrative of actions to date in the follow-up C-141 submission. If remedial efforts have been successfully completed or if the release occurred within a lined containment area (see Subparagraph (a) of Paragraph (5) of Subsection A of 19.15.29.11 NMAC), please prepare and attach all information needed for closure evaluation in the follow-up C-141 submission.

I hereby certify that the information given above is true and complete to the best of my knowledge and understand that pursuant to OCD rules and regulations all operators are required to report and/or file certain release notifications and perform corrective actions for releases which may endanger public health or the environment. The acceptance of a C-141 report by the OCD does not relieve the operator of liability should their operations have failed to adequately investigate and remediate contamination that pose a threat to groundwater, surface water, human health or the environment. In addition, OCD acceptance of a C-141 report does not relieve the operator of responsibility for compliance with any other federal, state, or local laws and/or regulations.

I hereby agree and sign off to the above statement	Name: Fernando Rodriguez Title: SR EHS Specialist Email: fernandorodriguez@rileypermian.com Date: 05/28/2026
--	---

Sante Fe Main Office
Phone: (505) 476-3441

General Information
Phone: (505) 629-6116

Online Phone Directory
<https://www.emnrd.nm.gov/ocd/contact-us>

State of New Mexico
Energy, Minerals and Natural Resources
Oil Conservation Division
1220 S. St Francis Dr.
Santa Fe, NM 87505

QUESTIONS, Page 3

Action 589500

QUESTIONS (continued)

Operator: RILEY PERMIAN OPERATING COMPANY, LLC 29 E Reno Avenue Oklahoma City, OK 73104	OGRID: 372290
	Action Number: 589500
	Action Type: [C-141] Remediation Closure Request C-141 (C-141-v-Closure)

QUESTIONS

Site Characterization	
<i>Please answer all the questions in this group (only required when seeking remediation plan approval and beyond). This information must be provided to the appropriate district office no later than 90 days after the release discovery date.</i>	
What is the shallowest depth to groundwater beneath the area affected by the release in feet below ground surface (ft bgs)	Between 75 and 100 (ft.)
What method was used to determine the depth to ground water	NM OSE iWaters Database Search
Did this release impact groundwater or surface water	No
What is the minimum distance, between the closest lateral extents of the release and the following surface areas:	
A continuously flowing watercourse or any other significant watercourse	Between ½ and 1 (mi.)
Any lakebed, sinkhole, or playa lake (measured from the ordinary high-water mark)	Between ½ and 1 (mi.)
An occupied permanent residence, school, hospital, institution, or church	Between 1000 (ft.) and ½ (mi.)
A spring or a private domestic fresh water well used by less than five households for domestic or stock watering purposes	Between 1000 (ft.) and ½ (mi.)
Any other fresh water well or spring	Between 1000 (ft.) and ½ (mi.)
Incorporated municipal boundaries or a defined municipal fresh water well field	Between ½ and 1 (mi.)
A wetland	Between 1000 (ft.) and ½ (mi.)
A subsurface mine	Greater than 5 (mi.)
An (non-karst) unstable area	Between 1 and 5 (mi.)
Categorize the risk of this well / site being in a karst geology	Medium
A 100-year floodplain	Between 1000 (ft.) and ½ (mi.)
Did the release impact areas not on an exploration, development, production, or storage site	No

Remediation Plan	
<i>Please answer all the questions that apply or are indicated. This information must be provided to the appropriate district office no later than 90 days after the release discovery date.</i>	
Requesting a remediation plan approval with this submission	Yes
<i>Attach a comprehensive report demonstrating the lateral and vertical extents of soil contamination associated with the release have been determined, pursuant to 19.15.29.11 NMAC and 19.15.29.13 NMAC.</i>	
Have the lateral and vertical extents of contamination been fully delineated	Yes
Was this release entirely contained within a lined containment area	Yes
<i>Per Subsection B of 19.15.29.11 NMAC unless the site characterization report includes completed efforts at remediation, the report must include a proposed remediation plan in accordance with 19.15.29.12 NMAC, which includes the anticipated timelines for beginning and completing the remediation.</i>	
On what estimated date will the remediation commence	05/18/2026
On what date will (or did) the final sampling or liner inspection occur	05/27/2026
On what date will (or was) the remediation complete(d)	05/22/2026
What is the estimated surface area (in square feet) that will be remediated	4000
What is the estimated volume (in cubic yards) that will be remediated	0
<i>These estimated dates and measurements are recognized to be the best guess or calculation at the time of submission and may (be) change(d) over time as more remediation efforts are completed.</i>	
<i>The OCD recognizes that proposed remediation measures may have to be minimally adjusted in accordance with the physical realities encountered during remediation. If the responsible party has any need to significantly deviate from the remediation plan proposed, then it should consult with the division to determine if another remediation plan submission is required.</i>	

Sante Fe Main Office
Phone: (505) 476-3441

General Information
Phone: (505) 629-6116

Online Phone Directory
<https://www.emnrd.nm.gov/ocd/contact-us>

State of New Mexico
Energy, Minerals and Natural Resources
Oil Conservation Division
1220 S. St Francis Dr.
Santa Fe, NM 87505

QUESTIONS, Page 4

Action 589500

QUESTIONS (continued)

Operator: RILEY PERMIAN OPERATING COMPANY, LLC 29 E Reno Avenue Oklahoma City, OK 73104	OGRID: 372290
	Action Number: 589500
	Action Type: [C-141] Remediation Closure Request C-141 (C-141-v-Closure)

QUESTIONS

Remediation Plan (continued)	
<i>Please answer all the questions that apply or are indicated. This information must be provided to the appropriate district office no later than 90 days after the release discovery date.</i>	
This remediation will (or is expected to) utilize the following processes to remediate / reduce contaminants:	
<i>(Select all answers below that apply.)</i>	
Is (or was) there affected material present needing to be removed	Yes
Is (or was) there a power wash of the lined containment area (to be) performed	Yes
OTHER (Non-listed remedial process)	Not answered.
<i>Per Subsection B of 19.15.29.11 NMAC unless the site characterization report includes completed efforts at remediation, the report must include a proposed remediation plan in accordance with 19.15.29.12 NMAC, which includes the anticipated timelines for beginning and completing the remediation.</i>	
I hereby certify that the information given above is true and complete to the best of my knowledge and understand that pursuant to OCD rules and regulations all operators are required to report and/or file certain release notifications and perform corrective actions for releases which may endanger public health or the environment. The acceptance of a C-141 report by the OCD does not relieve the operator of liability should their operations have failed to adequately investigate and remediate contamination that pose a threat to groundwater, surface water, human health or the environment. In addition, OCD acceptance of a C-141 report does not relieve the operator of responsibility for compliance with any other federal, state, or local laws and/or regulations.	
I hereby agree and sign off to the above statement	Name: Fernando Rodriguez Title: SR EHS Specialist Email: fernandorodriguez@rileypermian.com Date: 05/28/2026
<i>The OCD recognizes that proposed remediation measures may have to be minimally adjusted in accordance with the physical realities encountered during remediation. If the responsible party has any need to significantly deviate from the remediation plan proposed, then it should consult with the division to determine if another remediation plan submission is required.</i>	

Sante Fe Main Office
Phone: (505) 476-3441

General Information
Phone: (505) 629-6116

Online Phone Directory
<https://www.emnrd.nm.gov/ocd/contact-us>

State of New Mexico
Energy, Minerals and Natural Resources
Oil Conservation Division
1220 S. St Francis Dr.
Santa Fe, NM 87505

QUESTIONS, Page 6

Action 589500

QUESTIONS (continued)

Operator: RILEY PERMIAN OPERATING COMPANY, LLC 29 E Reno Avenue Oklahoma City, OK 73104	OGRID: 372290
	Action Number: 589500
	Action Type: [C-141] Remediation Closure Request C-141 (C-141-v-Closure)

QUESTIONS

Liner Inspection Information	
Last liner inspection notification (C-141L) recorded	587757
Liner inspection date pursuant to Subparagraph (a) of Paragraph (5) of Subsection A of 19.15.29.11 NMAC	05/27/2026
Was all the impacted materials removed from the liner	Yes
What was the liner inspection surface area in square feet	4000

Remediation Closure Request	
<i>Only answer the questions in this group if seeking remediation closure for this release because all remediation steps have been completed.</i>	
Requesting a remediation closure approval with this submission	Yes
Have the lateral and vertical extents of contamination been fully delineated	Yes
Was this release entirely contained within a lined containment area	Yes
What was the total surface area (in square feet) remediated	4000
What was the total volume (cubic yards) remediated	0
Summarize any additional remediation activities not included by answers (above)	All fluids were recovered from the release and managed appropriately. A crew was sent to site to remove gravel from lined containment and power wash all staining from the surfaces of the liner.

The responsible party must attach information demonstrating they have complied with all applicable closure requirements and any conditions or directives of the OCD. This demonstration should be in the form of a comprehensive report (in .pdf format) including a scaled site map, sampling diagrams, relevant field notes, photographs of any excavation prior to backfilling, laboratory data including chain of custody documents of final sampling, and a narrative of the remedial activities. Refer to 19.15.29.12 NMAC.

I hereby certify that the information given above is true and complete to the best of my knowledge and understand that pursuant to OCD rules and regulations all operators are required to report and/or file certain release notifications and perform corrective actions for releases which may endanger public health or the environment. The acceptance of a C-141 report by the OCD does not relieve the operator of liability should their operations have failed to adequately investigate and remediate contamination that pose a threat to groundwater, surface water, human health or the environment. In addition, OCD acceptance of a C-141 report does not relieve the operator of responsibility for compliance with any other federal, state, or local laws and/or regulations. The responsible party acknowledges they must substantially restore, reclaim, and re-vegetate the impacted surface area to the conditions that existed prior to the release or their final land use in accordance with 19.15.29.13 NMAC including notification to the OCD when reclamation and re-vegetation are complete.

I hereby agree and sign off to the above statement	Name: Fernando Rodriguez Title: SR EHS Specialist Email: fernandorodriguez@rileypermian.com Date: 05/28/2026
--	---

Sante Fe Main Office
Phone: (505) 476-3441

General Information
Phone: (505) 629-6116

Online Phone Directory
<https://www.emnrd.nm.gov/ocd/contact-us>

State of New Mexico
Energy, Minerals and Natural Resources
Oil Conservation Division
1220 S. St Francis Dr.
Santa Fe, NM 87505

CONDITIONS

Action 589500

CONDITIONS

Operator: RILEY PERMIAN OPERATING COMPANY, LLC 29 E Reno Avenue Oklahoma City, OK 73104	OGRID: 372290
	Action Number: 589500
	Action Type: [C-141] Remediation Closure Request C-141 (C-141-v-Closure)

CONDITIONS

Created By	Condition	Condition Date
nvelez	Liner inspection approved, release resolved. Restoration complete.	6/2/2026