

# nAPP2614833268 C-141 INTIAL Narrative

ELS Segment 1: Lybrook Main to HCU 428H  
 San Juan County  
 NMNM106718355  
 36.226588, -107.667223  
 UNIT J&A, SEC15 & 20 T23N, R8W  
 SURFACE OWNER: BLM

5/16/26

- A leak was discovered on the layflat line clamp connection. The pumps were shut down, and valves were isolated at the road boar and boost pump.

5/27/26

- Delineation samples and mapping conducted.

## SPILL CALCULATIONS

DEPTH (inches)	LENGTH (feet)	WIDTH (feet)	Effective Porosity	BARRELS (bbls.)	Thickness (feet)	
<b>MIST METHOD</b>						
lt. Mist			NA	0.00000	0.000008	
Med. Mist			NA	0.00000	0.00008	
Hvy. Mist			NA	0.00000	0.00083	
<b>RESIDUAL METHOD (Length X Width X Avg. Depth X Eff. Porosity divided by 5.6146)</b>						
skim				0.00000	0.002604	<b>Soil Type / Effective Porosity</b> <b>0.25</b> Gravel - 25% Porosity <b>0.2</b> Sand - 20% Porosity <b>0.15</b> Clay/Silt/Sand Mix - 15% <b>0.05</b> Clay - 5% Porosity <b>0.03</b> Caliche - 3% <b>0.25</b> Unknown - 25%
1/16				0.00000	0.005208	
1/8				0.00000	0.010417	
1/4				0.00000	0.020803	
1/2				0.00000	0.041667	
3/4				0.00000	0.062	
1				0.00000	0.083333	
2	80	45	0.15	16.02957	0.166666	
2	28	30	0.15	3.74023	0.166666	
2	139	7	0.15	4.33244	0.166666	
2	45	2	0.15	0.40074	0.166666	
2	378	8	0.15	13.46484	0.166666	
2	78	3	0.15	1.04192	0.166666	
2	37	14	0.15	2.30648	0.166666	
2				0.00000	0.166666	
10				0.00000	0.833333	
11				0.00000	0.916666	
12				0.00000	1	

\*For spills greater than one foot of depth use 12 inches as your depth then multiply the amount of barrels by the number feet of actual depth.

MACRO SECTION

**RELEASE POINT #1 TOTAL BBL 41.32**

DEPTH (inches)	LENGTH (feet)	WIDTH (feet)	Effective Porosity	BARRELS (bbls.)	Thickness (feet)
<b>MIST METHOD</b>					
lt. Mist			NA	0.00000	0.000008
Med. Mist			NA	0.00000	0.00008
Hvy. Mist			NA	0.00000	0.00083
<b>RESIDUAL METHOD (Length X Width X Avg. Depth X Eff. Porosity divided by 5.6146)</b>					
skim				0.00000	0.002604
1/16				0.00000	0.005208
1/8				0.00000	0.010417
1/4				0.00000	0.020833
1/2				0.00000	0.041667
3/4				0.00000	0.062
1				0.00000	0.083333
2	60	50	0.15	13.35798	0.166666
2	989	4	0.15	17.61472	0.166666
2				0.00000	0.166666
2				0.00000	0.166666
2				0.00000	0.166666
2				0.00000	0.166666
2				0.00000	0.166666
2				0.00000	0.166666
2				0.00000	0.166666
10				0.00000	0.833333
11				0.00000	0.916666
12				0.00000	1

Soil Type / Effective Porosity
0.25 Gravel - 25% Porosity
0.2 Sand - 20% Porosity
0.15 Clay/Silt/Sand Mix - 15%
0.05 Clay - 5% Porosity
0.03 Caliche - 3%
0.25 Unknown - 25%

\*For spills greater than one foot of depth use 12 inches as your depth then multiply the amount of barrels by the number feet of actual depth.

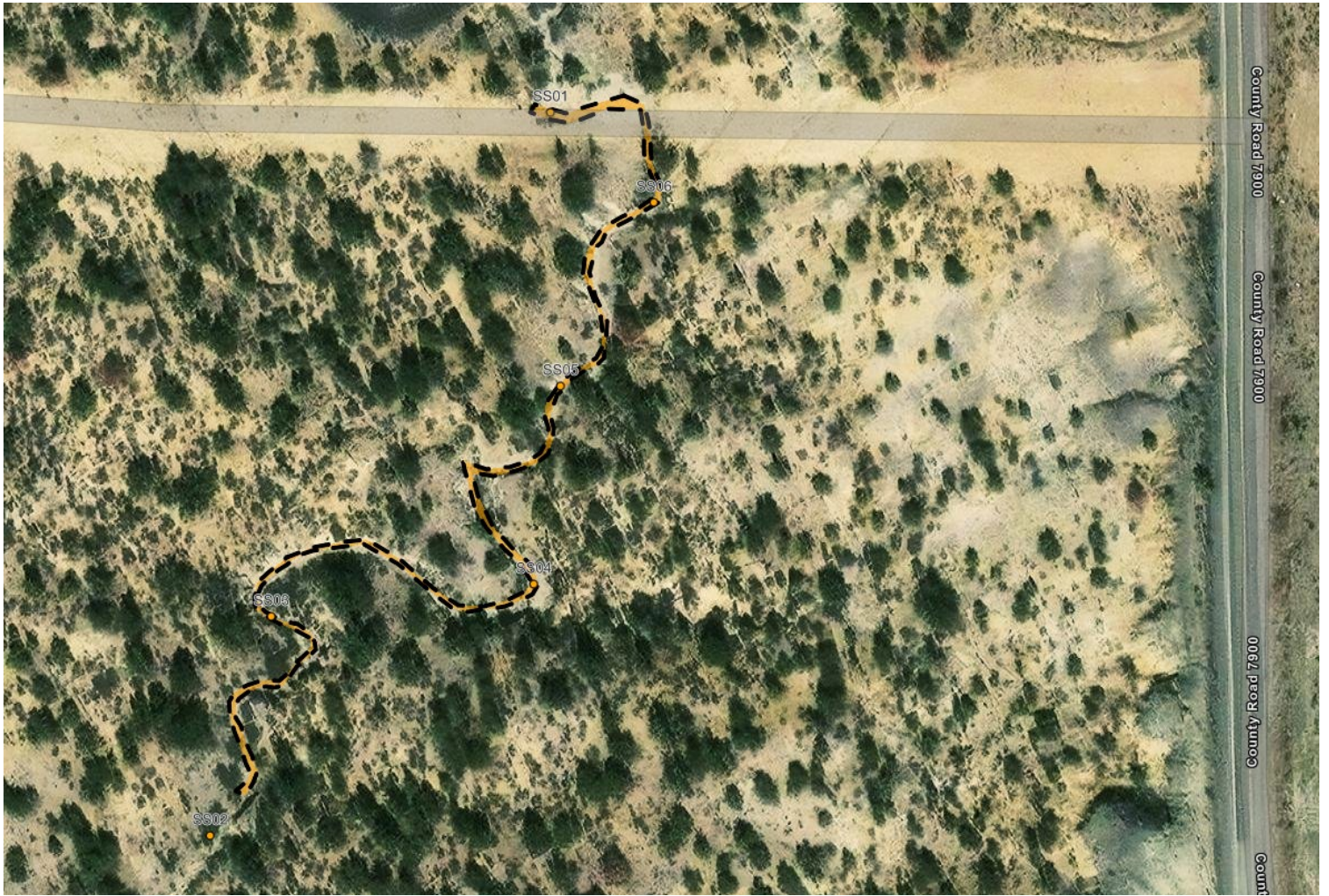
MACRO SECTION

RELEASE POINT #2 TOTAL BBL 30.97

SITE MAP 1



SITE MAP 2





Galaxy S25 Ultra



Galaxy S25 Ultra



Galaxy S25 Ultra



Galaxy S25 Ultra



Galaxy S25 Ultra



Galaxy S25 Ultra



Galaxy S25 Ultra



Galaxy S25 Ultra

Sante Fe Main Office  
Phone: (505) 476-3441

General Information  
Phone: (505) 629-6116

Online Phone Directory  
<https://www.emnrd.nm.gov/ocd/contact-us>

**State of New Mexico**  
**Energy, Minerals and Natural Resources**  
**Oil Conservation Division**  
**1220 S. St Francis Dr.**  
**Santa Fe, NM 87505**

QUESTIONS

Action 590020

**QUESTIONS**

Operator: ENDURING RESOURCES, LLC 6300 S Syracuse Way Centennial, CO 80111	OGRID: 372286
	Action Number: 590020
	Action Type: [C-141] Initial C-141 (C-141-v-Initial)

**QUESTIONS**

<b>Prerequisites</b>	
Incident ID (n#)	nAPP2614833268
Incident Name	NAPP2614833268 SEGMENT 1-LYBROOK MAIN TO HAYNES CANYON 428H @ A-20-23N-08W
Incident Type	Produced Water Release
Incident Status	Initial C-141 Received

<b>Location of Release Source</b>	
<i>Please answer all the questions in this group.</i>	
Site Name	Segment 1-Lybrook Main to Haynes Canyon 428H
Date Release Discovered	05/18/2026
Surface Owner	Federal

<b>Incident Details</b>	
<i>Please answer all the questions in this group.</i>	
Incident Type	Produced Water Release
Did this release result in a fire or is the result of a fire	No
Did this release result in any injuries	No
Has this release reached or does it have a reasonable probability of reaching a watercourse	Yes
Has this release endangered or does it have a reasonable probability of endangering public health	No
Has this release substantially damaged or will it substantially damage property or the environment	No
Is this release of a volume that is or may with reasonable probability be detrimental to fresh water	No

<b>Nature and Volume of Release</b>	
<i>Material(s) released, please answer all that apply below. Any calculations or specific justifications for the volumes provided should be attached to the follow-up C-141 submission.</i>	
Crude Oil Released (bbls) Details	Not answered.
Produced Water Released (bbls) Details	Cause: Equipment Failure   Coupling   Produced Water   Released: 72 BBL   Recovered: 0 BBL   Lost: 72 BBL.
Is the concentration of chloride in the produced water >10,000 mg/l	No
Condensate Released (bbls) Details	Not answered.
Natural Gas Vented (Mcf) Details	Not answered.
Natural Gas Flared (Mcf) Details	Not answered.
Other Released Details	Not answered.
Are there additional details for the questions above (i.e. any answer containing Other, Specify, Unknown, and/or Fire, or any negative lost amounts)	Not answered.

Sante Fe Main Office  
Phone: (505) 476-3441

General Information  
Phone: (505) 629-6116

Online Phone Directory  
<https://www.emnrd.nm.gov/ocd/contact-us>

**State of New Mexico**  
**Energy, Minerals and Natural Resources**  
**Oil Conservation Division**  
**1220 S. St Francis Dr.**  
**Santa Fe, NM 87505**

QUESTIONS, Page 2

Action 590020

**QUESTIONS (continued)**

Operator: ENDURING RESOURCES, LLC 6300 S Syracuse Way Centennial, CO 80111	OGRID: 372286
	Action Number: 590020
	Action Type: [C-141] Initial C-141 (C-141-v-Initial)

**QUESTIONS**

<b>Nature and Volume of Release (continued)</b>	
Is this a gas only submission (i.e. only significant Mcf values reported)	<b>No, according to supplied volumes this does not appear to be a "gas only" report.</b>
Was this a major release as defined by Subsection A of 19.15.29.7 NMAC	<b>Yes</b>
Reasons why this would be considered a submission for a notification of a major release	<b>From paragraph A. "Major release" determine using: (1) an unauthorized release of a volume, excluding gases, of 25 barrels or more; (2) an unauthorized release of a volume that: (b) may with reasonable probability reach a watercourse.</b>
<i>With the implementation of the 19.15.27 NMAC (05/25/2021), venting and/or flaring of natural gas (i.e. gas only) are to be submitted on the C-129 form.</i>	

**Initial Response**

*The responsible party must undertake the following actions immediately unless they could create a safety hazard that would result in injury.*

The source of the release has been stopped	<b>True</b>
The impacted area has been secured to protect human health and the environment	<b>True</b>
Released materials have been contained via the use of berms or dikes, absorbent pads, or other containment devices	<b>True</b>
All free liquids and recoverable materials have been removed and managed appropriately	<b>True</b>
If all the actions described above have not been undertaken, explain why	<i>Not answered.</i>

*Per Paragraph (4) of Subsection B of 19.15.29.8 NMAC the responsible party may commence remediation immediately after discovery of a release. If remediation has begun, please prepare and attach a narrative of actions to date in the follow-up C-141 submission. If remedial efforts have been successfully completed or if the release occurred within a lined containment area (see Subparagraph (a) of Paragraph (5) of Subsection A of 19.15.29.11 NMAC), please prepare and attach all information needed for closure evaluation in the follow-up C-141 submission.*

I hereby certify that the information given above is true and complete to the best of my knowledge and understand that pursuant to OCD rules and regulations all operators are required to report and/or file certain release notifications and perform corrective actions for releases which may endanger public health or the environment. The acceptance of a C-141 report by the OCD does not relieve the operator of liability should their operations have failed to adequately investigate and remediate contamination that pose a threat to groundwater, surface water, human health or the environment. In addition, OCD acceptance of a C-141 report does not relieve the operator of responsibility for compliance with any other federal, state, or local laws and/or regulations.

I hereby agree and sign off to the above statement	<b>Name: Heather Huntington</b> <b>Title: Permitting Tech</b> <b>Email: <a href="mailto:hhuntington@enduringresources.com">hhuntington@enduringresources.com</a></b> <b>Date: 05/29/2026</b>
--	---

Sante Fe Main Office  
Phone: (505) 476-3441

General Information  
Phone: (505) 629-6116

Online Phone Directory  
<https://www.emnrd.nm.gov/ocd/contact-us>

**State of New Mexico**  
**Energy, Minerals and Natural Resources**  
**Oil Conservation Division**  
**1220 S. St Francis Dr.**  
**Santa Fe, NM 87505**

QUESTIONS, Page 3

Action 590020

**QUESTIONS (continued)**

Operator: ENDURING RESOURCES, LLC 6300 S Syracuse Way Centennial, CO 80111	OGRID: 372286
	Action Number: 590020
	Action Type: [C-141] Initial C-141 (C-141-v-Initial)

**QUESTIONS**

**Site Characterization**

Please answer all the questions in this group (only required when seeking remediation plan approval and beyond). This information must be provided to the appropriate district office no later than 90 days after the release discovery date.

What is the shallowest depth to groundwater beneath the area affected by the release in feet below ground surface (ft bgs)	Not answered.
What method was used to determine the depth to ground water	Not answered.
Did this release impact groundwater or surface water	Not answered.
<b>What is the minimum distance, between the closest lateral extents of the release and the following surface areas:</b>	
A continuously flowing watercourse or any other significant watercourse	Not answered.
Any lakebed, sinkhole, or playa lake (measured from the ordinary high-water mark)	Not answered.
An occupied permanent residence, school, hospital, institution, or church	Not answered.
A spring or a private domestic fresh water well used by less than five households for domestic or stock watering purposes	Not answered.
Any other fresh water well or spring	Not answered.
Incorporated municipal boundaries or a defined municipal fresh water well field	Not answered.
A wetland	Not answered.
A subsurface mine	Not answered.
An (non-karst) unstable area	Not answered.
Categorize the risk of this well / site being in a karst geology	Not answered.
A 100-year floodplain	Not answered.
Did the release impact areas not on an exploration, development, production, or storage site	Not answered.

**Remediation Plan**

Please answer all the questions that apply or are indicated. This information must be provided to the appropriate district office no later than 90 days after the release discovery date.

Requesting a remediation plan approval with this submission	No
<i>The OCD recognizes that proposed remediation measures may have to be minimally adjusted in accordance with the physical realities encountered during remediation. If the responsible party has any need to significantly deviate from the remediation plan proposed, then it should consult with the division to determine if another remediation plan submission is required.</i>	

Sante Fe Main Office  
Phone: (505) 476-3441

General Information  
Phone: (505) 629-6116

Online Phone Directory  
<https://www.emnrd.nm.gov/ocd/contact-us>

**State of New Mexico**  
**Energy, Minerals and Natural Resources**  
**Oil Conservation Division**  
**1220 S. St Francis Dr.**  
**Santa Fe, NM 87505**

CONDITIONS

Action 590020

**CONDITIONS**

Operator: ENDURING RESOURCES, LLC 6300 S Syracuse Way Centennial, CO 80111	OGRID: 372286
	Action Number: 590020
	Action Type: [C-141] Initial C-141 (C-141-v-Initial)

**CONDITIONS**

Created By	Condition	Condition Date
nvez	None	6/2/2026