



March 24, 2025

Nelson Velez
New Mexico Oil Conservation Division
1000 Rio Brazos Road
Aztec, New Mexico 87410

**Re: Q1 through Q4 2024 Progress Report
Benson-Montin-Greer
Highway 537 Llaves Pipeline 2008 Release
Rio Arriba County, New Mexico
AP-136 (Formerly 3RP-447)
Incident #NRMD0929936774**

Dear Mr. Velez:

On behalf of Benson-Montin-Greer Drilling Corporation (BMG), Animas Environmental Services, LLC (AES) has prepared this 2024 Progress Report, which details Q1 through Q4 gauging and sampling activities at the BMG Llaves Pipeline 2008 Release location. Site activities were conducted in accordance with a Stage 1 and 2 Abatement Plan dated June 6, 2019, with approval from the New Mexico Oil Conservation Division (NMOCD) still pending. On October 2, 2024, AES submitted an Abatement Plan Modification Request.

1.0 Site Information

1.1 Site Location

The 2008 release originated on the Schmitz Ranch, on the south side of Highway 537 and flowed south and southwest through a small unnamed arroyo for approximately 920 linear feet (ft). This arroyo eventually drains to the Los Ojitos Arroyo, which ultimately drains to Largo Canyon. The release location is legally described as being located within the NW¼ NE¼ Section 18, Township 25N, Range 3W in Rio Arriba County, New Mexico. Latitude and longitude were recorded as being N36.40357 and W107.18422, respectively. A topographic site location map, based on an excerpt from the U.S. Geological Survey (USGS) 7.5-minute Schmitz Ranch, Rio Arriba County, New Mexico topographic quadrangle, is included as Figure 1, and a general site plan is presented as Figure 2.

P.O. Box 8
Farmington, New Mexico 87499
505-564-2281
animasenvironmental.com

1.2 Release History

December 31, 2007 - A Western Refining truck driver discovered the Llaves pipeline leak and immediately contacted BMG. BMG personnel confirmed the release and shut down the Llaves pipeline pumps and block valve located about one mile upstream. BMG contracted with TNT Excavating to remove the oil that had pooled along the surface of the small arroyo. Approximately 40 barrels (bbls) of oil were recovered and placed in storage tanks at the BMG Hwy 537 Transfer Station. A total of 3,932 cubic yards of contaminated soils were excavated and transported to the TNT Landfarm facility for disposal.

January 9, 2008 – The Llaves pipeline was repaired. BMG notified the National Response Center on January 23, 2008, and the release was given identification number 860429.

1.3 Abatement Plan 2019

In accordance with New Mexico Administrative Code (NMAC) 19.15.30.11, a Stage 1 and 2 Abatement Plan was requested by the NMOCD in correspondence dated March 18, 2019, and subsequently submitted in June 2019.

The purpose of a Stage 1 Abatement Plan is to design and conduct a site investigation that adequately defines site conditions, and to provide the data necessary to select and design an effective abatement option. The plan proposed that previous site data and associated reports adequately defined site conditions, thereby meeting the requirements of a Stage 1 Abatement Plan.

The proposed activities of the Stage 2 Abatement Plan included replacement monitor well MW-9R installation and sampling (completed September 2019), installation of a solar-powered low vacuum non-aqueous phase liquid (NAPL) recovery system (completed October 2019), ongoing groundwater monitoring and sampling, and compliance soil sampling.

2.0 Quarterly Progress Summaries, Q1 through Q4 2024

2.1 Q1 - March 2024 Groundwater Gauging

Groundwater gauging of site wells, replacement of absorbent socks, and hand bailing of NAPL was conducted by AES on March 7, 2024. Oleophilic/hydrophobic absorbent socks were replaced in MPE-3 and MPE-6. Water quality readings and samples were not collected. All field measurements were recorded on a Depth to Groundwater Measurement Form and NAPL Recovery Form, which are included in Appendix A.

Groundwater and NAPL Measurements

Depth to groundwater at the site ranged from 33.58 ft below ground surface (bgs) at MPE-7 to 41.44 ft bgs at MW-7. NAPL was observed in five wells: MPE-1 (sheen), MPE-3 (0.35 ft), MPE-4 (0.15 ft), MPE-5 (2.26 ft), and MPE-6 (sheen). Residual NAPL was not observed in wells MW-7, MW-9R, MPE-2, and MPE-7. Well MW-2 was dry and no residual NAPL was observed.

Groundwater direction and gradient were not calculated for this sampling event, as there was not enough data available. Groundwater flow direction historically has been to the southwest. Fluid depth measurements are presented in Table 1, and fluid depth measurements, historical groundwater contours, and residual NAPL contours are presented on Figure 3.

2.2 Q2 - May 2024 Groundwater Gauging

Groundwater gauging of site wells and hand bailing of NAPL was conducted on May 29, 2024. No absorbent socks were replaced. Water quality readings and samples were not collected. All field measurements were recorded on a Depth to Groundwater Measurement Form and a NAPL Recovery Form, which are included in Appendix A.

Groundwater and NAPL Measurements

Depth to groundwater at the site ranged from 33.74 ft bgs at MPE-7 to 41.59 ft bgs at MW-7. NAPL was observed in three wells: MPE-3 (0.37 ft), MPE-4 (0.17 ft), and MPE-5 (1.93 ft). NAPL was not observed in wells MW-2, MW-7, MW-9R, MPE-1, MPE-2, MPE-6, and MPE-7. Fluid depth measurements are presented in Table 1, and fluid depth measurements, historical groundwater contours, and residual NAPL contours are presented on Figure 3.

2.3 Q3 – September 2024 Groundwater Gauging

Groundwater gauging of site wells, replacement of absorbent socks, and hand bailing of NAPL was conducted on September 5, 2024. Absorbent socks were replaced in MPE-1, MPE-3, MPE-4, MPE-5, and MW-9R. All field measurements were recorded on a Depth to Groundwater Measurement Form and Well Monitoring and Maintenance Forms, which are included in Appendix A.

Groundwater and NAPL Measurements

Depth to groundwater at the site ranged from 34.03 ft bgs at MPE-7 to 41.86 ft bgs at MW-7. Residual NAPL was observed in four wells: MW-9R (0.03), MPE-3 (0.20 ft), MPE-4 (0.08 ft), and MPE-5 (1.43 ft). MW-2 was found to be dry. Residual NAPL was not observed in MW-7, MPE-1, MPE-2, MPE-6, and MPE-7. Fluid depth measurements are presented in Table 1, and fluid depth measurements, historical groundwater contours, and residual NAPL contours are presented on Figure 3.

2.4 Q4 – December 2024 Groundwater Gauging and Sampling

Groundwater gauging of site wells, replacement of absorbent socks, hand bailing of NAPL, and sampling of monitor well MW-9R was conducted on December 5, 2024. Absorbent socks were replaced in MPE-1, MPE-3, MPE-4, MPE-5, and MW-9R. Water quality readings were not collected. All field measurements were recorded on a Depth to Groundwater Measurement Form and Well Monitoring and Maintenance Forms, which are included in Appendix A.

Groundwater and NAPL Measurements

Depth to groundwater at the site ranged from 36.24 ft bgs at MPE-3 to 40.06 ft bgs at MPE-5. NAPL was observed in six wells: MW-9R (sheen), MPE-1 (0.01 ft), MPE-3 (0.23 ft), MPE-4 (0.01 ft), MPE-5 (3.68 ft), and MPE-6 (0.01 ft). Fluid depth measurements are presented in Table 1, and fluid depth measurements, historical groundwater contours, and residual NAPL contours are presented on Figure 3.

Groundwater Laboratory Analyses

Groundwater samples were collected from MW-9R and submitted to Eurofins Environment Testing South Central, LLC, (Eurofins) in Albuquerque, New Mexico, for analysis of the following parameters:

- Total dissolved solids (TDS) per SM2540C;
- VOCs per U.S. Environmental Protection Agency (USEPA) Method 8260;
- Total petroleum hydrocarbons (TPH) gasoline range organics (GRO), diesel range organics (DRO), and motor oil range organics (MRO) per USEPA Method 8015;
- Dissolved iron and manganese per USEPA Method 6010B; and
- Total Phenolics per SW-846 9067.

All samples were preserved in laboratory-supplied containers and stored in an insulated cooler containing ice. Samples were shipped by Eurofins Albuquerque courier in chilled and insulated coolers at less than 6°C to the analytical laboratory.

Groundwater Laboratory Analytical Results

VOCs of note, including benzene, toluene, ethylbenzene, and total xylenes, were not detected in the sample collected at MW-9R. TPH-GRO was detected at a concentration of 0.054 milligrams per liter (mg/L), DRO at 36 mg/L, and MRO at 17 mg/L.

The WQCC standard of 1,000 mg/L for TDS was exceeded with 1,200 mg/L. MW-9R also exceeded the WQCC standard of 0.2 mg/L for dissolved manganese (2.8 mg/L). Total phenolics also exceeded the WQCC standard of 0.005 mg/L (0.23 mg/L). Groundwater analytical results are summarized in Tables 2 and 3 and are also presented on Figure 3. The laboratory analytical report is included in Appendix B.

2.5 NAPL Recovery

On March 7, May 29, September 5, and December 5, 2024, AES hand bailed NAPL from any wells that were found to contain recoverable quantities of product. Hand bailing was performed by lowering a bailer into each well and retrieving it via a length of string. Bailed NAPL was decanted into the onsite storage barrel. NAPL volumes were approximated and recorded on the attached Depth to Groundwater Measurement forms.

NAPL Recovery Data - March 7, 2024

Well ID	Initial Depth to NAPL (ft)	Initial Depth to Water (ft)	Initial NAPL thickness (ft)	Final Depth to NAPL (ft)	Final Depth to Water (ft)	Final NAPL Thickness (ft)	Volume of NAPL Removed (gallon)
MPE-3	35.46	35.81	0.35	35.49	35.59	0.10	0.528
MPE-4	36.49	36.64	0.15	--	--	--	0.277
MPE-5	37.71	39.97	2.26	38.38	38.42	0.04	0.57

NAPL Recovery Data - May 29, 2024

Well ID	Initial Depth to NAPL (ft)	Initial Depth to Water (ft)	Initial NAPL thickness (ft)	Final Depth to NAPL (ft)	Final Depth to Water (ft)	Final NAPL Thickness (ft)	Volume of NAPL Removed (gallon)
MPE-3	35.66	36.03	0.37	35.74	35.93	0.19	0.046
MPE-4	36.64	36.81	0.17	36.85	36.87	0.02	0.007
MPE-5	38.00	39.93	1.93	38.41	38.56	0.15	0.33

NAPL Recovery Data – September 5, 2024

Well ID	Initial Depth to NAPL (ft)	Initial Depth to Water (ft)	Initial NAPL thickness (ft)	Final Depth to NAPL (ft)	Final Depth to Water (ft)	Final NAPL Thickness (ft)	Volume of NAPL Removed (gallon)
MPE-3	36.19	36.39	0.20	36.27	36.32	0.05	0.033
MPE-4	36.96	37.04	0.08	37.02	37.04	0.02	0.013
MPE-5	38.39	39.82	1.43	38.84	38.89	0.05	1.27
MW-9R	36.28	36.31	0.03	--	38.31	--	0.005

NAPL Recovery Data – December 5, 2024

Well ID	Initial Depth to NAPL (ft)	Initial Depth to Water (ft)	Initial NAPL thickness (ft)	Final Depth to NAPL (ft)	Final Depth to Water (ft)	Final NAPL Thickness (ft)	Volume of NAPL Removed (gallon)
MPE-3	36.01	36.24	0.23	36.06	36.12	0.06	<0.15
MPE-5	36.38	40.06	3.68	38.67	38.85	0.18	0.27

Petroleum Hydrocarbon Mass Removal through Q4 2024

Time Period	Mass Petroleum Hydrocarbons Removed (lbs)
Through 2023	41,720
Q1 2024	8.7
Q2 2024	2.4
Q3 2024	8.3
Q4 2024	2.7
Cumulative Mass Removal (lbs)	41,742

Cumulative depth to groundwater and NAPL measurements are presented in Table 1 and in NAPL recovery forms, which are included as Appendix A.

3.0 Conclusions, Recommendations, and Scheduled Activities

3.1 Conclusions

In March, May, September, and December 2024, AES conducted well gauging, hand bailing of NAPL, and groundwater sampling of MW-9R (December 2024). Additionally, hydrophobic socks were changed out within select site wells. Groundwater elevations in the site monitor wells are generally similar to those observed in 2023. Well MW-2 (the downgradient well) has been dry since September of 2014.

Groundwater samples were collected from MW-9R in December 2024. Dissolved phase concentrations for volatile organics were either below laboratory detection limits or below their respective WQCC standards in MW-9R. TPH-GRO had a reported concentration of 0.54 mg/L, DRO was 36 mg/L, and MRO was 17 mg/L in MW-9R; however, there are no WQCC standards for TPH in groundwater. Total phenolics were above the WQCC standard of 0.005 mg/L with 0.23 mg/L. Dissolved manganese exceeded the WQCC standard with 2.8 mg/L. TDS exceeded the WQCC standard of 1,000 mg/L in well MW-9R with 1,200 mg/L.

NAPL recovery efforts included hand-bailing and installation of hydrophobic socks.

3.2 Recommendations

As described in the Abatement Plan Modification Request dated October 2, 2024, AES recommends:

1. Injection of ETEC Advanced Bioremediation Solutions' (ETEC's) PetroSolv™ surfactant into wells with residual NAPL impacts; specifically, MPE-1, MPE-2, MPE-3, MPE-4, MPE-5, MPE-6, and MW-9R.
2. Extraction of PetroSolv, mobilized NAPL, and impacted groundwater from the treated wells for transport and disposal at the Envirotech Soil Remediation Facility, Landfarm #3, near Hilltop, New Mexico.
3. Injection of a combination ETEC's CBN™ nutrient blend, A2™ bacterial consortium, and EA™ enzyme accelerator to enhance biodegradation of remaining NAPL and dissolved-phase contaminants.

Until approval is received from NMOCD to perform these additional remedial actions, AES will continue recovery of residual NAPL via hydrophobic socks where NAPL thickness is sufficient for removal; and with quarterly hand-bailing and sock replacements as necessary.

3.3 Scheduled Site Activities

The following site activities are currently scheduled for 2025:

- Continued recovery of residual NAPL via oleophilic/hydrophobic socks where NAPL thickness is sufficient for removal, with quarterly hand-bailing and sock replacements as necessary (Q1 2025 event completed February 27, 2025);
- Semi-annual gauging events of the remaining monitor wells MW-2, MW-7, and MW-9R; and
- In December 2025, conduct sampling of MW-9R for VOCs per USEPA 8260, TPH (GRO, DRO, MRO) per USEPA 8015, dissolved iron and manganese per USEPA 200.8/6010, TDS per SM2540C, and phenols per SW-846 9067.

If you have any questions regarding this report or site conditions, please do not hesitate to contact Angela Todd at (720) 537-6650.

Respectfully Submitted,



Jessica Liesse
Staff Scientist
jliese@animasenvironmental.com



Angela Todd, CHMM, PMP
Senior Project Manager
atodd@animasenvironmental.com



Elizabeth McNally, P.E.
Principal
emcnally@animasenvironmental.com

Tables

1. Summary of Groundwater Measurement and Water Quality Data, 2020 to Present
2. Summary of Groundwater Analytical Results – VOCs and TPH
3. Summary of Groundwater Analytical Results – WQCC Groundwater Standards

Figures

1. Topographic Site Location Map
2. General Site Plan
3. 2024 Groundwater Elevation Contours, Residual NAPL Contours, and Groundwater Contaminant Concentrations

Appendices

- A. Depth to Groundwater Measurement Forms, NAPL Recovery Forms, and Well Monitoring and Maintenance Forms – March 2024, May 2024, September 2024, and December 2024
- B. Laboratory Analytical Reports (Eurofins 885-16524-1)

Cc: Zach Stradling (zstradling@bmgdrilling.com)
Benson-Montin-Greer Drilling Corp.
4900 College Blvd
Farmington, NM 87402

Tables

TABLE 1
SUMMARY OF GROUNDWATER MEASUREMENT AND WATER QUALITY DATA, 2020 to PRESENT
BMG HWY 537 LLAVES PIPELINE 2008 OIL RELEASE
Rio Arriba County, New Mexico

Well ID	Date Sampled	Surveyed TOC (ft)	Total Well Depth	Screen Interval	Depth to NAPL (ft)	Depth to Water (ft)	NAPL Thickness (ft)	GW Elev. (ft)	Temp. (°C)	Specific Conduct. (mS)	Dissolved Oxygen (mg/L)	pH	ORP (mV)
MPE-1	10-Mar-20	TBS	40	30-40	36.93	37.36	0.43	NA	NM	NM	NM	NM	NM
MPE-1	25-Mar-20	TBS	40	30-40	37.08	37.71	0.63	NA	NM	NM	NM	NM	NM
MPE-1	23-Jun-20	TBS	40	30-40	37.60	38.50	0.90	NA	NM	NM	NM	NM	NM
MPE-1	23-Sep-20	TBS	40	30-40	37.79	38.69	0.90	NA	NM	NM	NM	NM	NM
MPE-1	23-Nov-20	TBS	40	30-40	37.84	38.69	0.85	NA	NM	NM	NM	NM	NM
MPE-1	17-Mar-21	TBS	40	30-40	36.75	37.22	0.47	NA	NM	NM	NM	NM	NM
MPE-1	17-Jun-21	TBS	40	30-40	36.94	37.13	0.19	NA	NM	NM	NM	NM	NM
MPE-1	29-Sep-21	TBS	40	30-40	37.18	37.40	0.22	NA	NM	NM	NM	NM	NM
MPE-1	30-Nov-21	TBS	40	30-40	37.22	37.39	0.17	NA	NM	NM	NM	NM	NM
MPE-1	08-Mar-22	TBS	40	30-40	--	--	0.01	NA	NM	NM	NM	NM	NM
MPE-1	09-Jun-22	TBS	40	30-40	37.29	37.39	0.10	NA	NM	NM	NM	NM	NM
MPE-1	28-Sep-22	TBS	40	30-40	37.77	37.78	0.01	NA	NM	NM	NM	NM	NM
MPE-1	21-Dec-22	TBS	40	30-40	38.68	38.72	0.04	NA	NM	NM	NM	NM	NM
MPE-1	15-Mar-23	TBS	40	30-40	38.42	38.42	sheen	NA	NM	NM	NM	NM	NM
MPE-1	22-Jun-23	TBS	40	30-40	38.09	38.43	0.34	NA	NM	NM	NM	NM	NM
MPE-1	13-Sep-23	TBS	40	30-40	39.04	39.04	sheen	NA	NM	NM	NM	NM	NM
MPE-1	13-Dec-23	TBS	40	30-40	37.67	37.68	0.01	NA	NM	NM	NM	NM	NM
MPE-1	07-Mar-24	TBS	40	30-40	--	37.36	sheen	NA	NM	NM	NM	NM	NM
MPE-1	29-May-24	TBS	40	30-40	--	37.38	--	NA	NM	NM	NM	NM	NM
MPE-1	05-Sep-24	TBS	40	30-40	--	37.63	--	NA	NM	NM	NM	NM	NM
MPE-1	05-Dec-24	TBS	40	30-40	37.68	37.69	0.01	NA	NM	NM	NM	NM	NM
MPE-2	10-Mar-20	TBS	39	29-39	--	34.74	--	NA	NM	NM	NM	NM	NM
MPE-2	25-Mar-20	TBS	39	29-39	34.62	34.63	0.01	NA	NM	NM	NM	NM	NM
MPE-2	23-Jun-20	TBS	39	29-39	34.85	34.85	0.00	NA	NM	NM	NM	NM	NM
MPE-2	23-Sep-20	TBS	39	29-39	35.14	35.15	0.01	NA	NM	NM	NM	NM	NM
MPE-2	23-Nov-20	TBS	39	29-39	35.11	35.13	0.02	NA	NM	NM	NM	NM	NM
MPE-2	17-Mar-21	TBS	39	29-39	--	35.21	--	NA	NM	NM	NM	NM	NM
MPE-2	17-Jun-21	TBS	39	29-39	35.32	35.33	0.01	NA	NM	NM	NM	NM	NM

TABLE 1
SUMMARY OF GROUNDWATER MEASUREMENT AND WATER QUALITY DATA, 2020 to PRESENT
BMG HWY 537 LLAVES PIPELINE 2008 OIL RELEASE
Rio Arriba County, New Mexico

Well ID	Date Sampled	Surveyed TOC (ft)	Total Well Depth	Screen Interval	Depth to NAPL (ft)	Depth to Water (ft)	NAPL Thickness (ft)	GW Elev. (ft)	Temp. (°C)	Specific Conduct. (mS)	Dissolved Oxygen (mg/L)	pH	ORP (mV)
MPE-2	29-Sep-21	TBS	39	29-39	35.58	35.59	0.01	NA	NM	NM	NM	NM	NM
MPE-2	30-Nov-21	TBS	39	29-39	35.61	35.62	0.01	NA	NM	NM	NM	NM	NM
MPE-2	08-Mar-22	TBS	39	29-39	--	--	0.01	NA	NM	NM	NM	NM	NM
MPE-2	09-Jun-22	TBS	39	29-39	--	35.68	--	NA	NM	NM	NM	NM	NM
MPE-2	28-Sep-22	TBS	39	29-39	35.64	35.65	0.01	NA	NM	NM	NM	NM	NM
MPE-2	21-Dec-22	TBS	39	29-39	--	35.39	--	NA	NM	NM	NM	NM	NM
MPE-2	15-Mar-23	TBS	39	29-39	--	35.29	--	NA	NM	NM	NM	NM	NM
MPE-2	22-Jun-23	TBS	39	29-39	--	--	--	NA	Did not gauge				
MPE-2	13-Sep-23	TBS	39	29-39	35.97	35.98	0.01	NA	NM	NM	NM	NM	NM
MPE-2	13-Dec-23	TBS	39	29-39	--	35.51	--	NA	NM	NM	NM	NM	NM
MPE-2	07-Mar-24	TBS	39	29-39	--	35.53	--	NA	NM	NM	NM	NM	NM
MPE-2	29-May-24	TBS	39	29-39	--	35.51	--	NA	NM	NM	NM	NM	NM
MPE-2	05-Sep-24	TBS	39	29-39	--	35.84	--	NA	NM	NM	NM	NM	NM
MPE-3	10-Mar-20	TBS	38	28-38	34.55	36.39	1.84	NA	NM	NM	NM	NM	NM
MPE-3	25-Mar-20	TBS	38	28-38	34.45	36.24	1.79	NA	NM	NM	NM	NM	NM
MPE-3	23-Jun-20	TBS	38	28-38	34.87	36.05	1.18	NA	NM	NM	NM	NM	NM
MPE-3	23-Sep-20	TBS	38	28-38	35.13	36.66	1.53	NA	NM	NM	NM	NM	NM
MPE-3	23-Nov-20	TBS	38	28-38	35.19	35.58	0.39	NA	NM	NM	NM	NM	NM
MPE-3	17-Mar-21	TBS	38	28-38	35.18	36.05	0.87	NA	NM	NM	NM	NM	NM
MPE-3	17-Jun-21	TBS	38	28-38	35.32	36.07	0.75	NA	NM	NM	NM	NM	NM
MPE-3	29-Sep-21	TBS	38	28-38	35.51	36.61	1.10	NA	NM	NM	NM	NM	NM
MPE-3	30-Nov-21	TBS	38	28-38	35.54	36.71	1.17	NA	NM	NM	NM	NM	NM
MPE-3	08-Mar-22	TBS	38	28-38	--	--	0.03	NA	NM	NM	NM	NM	NM
MPE-3	09-Jun-22	TBS	38	28-38	35.67	36.34	0.67	NA	NM	NM	NM	NM	NM
MPE-3	28-Sep-22	TBS	38	28-38	35.67	35.98	0.31	NA	NM	NM	NM	NM	NM
MPE-3	21-Dec-22	TBS	38	28-38	35.76	35.81	0.05	NA	NM	NM	NM	NM	NM
MPE-3	15-Mar-23	TBS	38	28-38	36.00	36.03	0.03	NA	NM	NM	NM	NM	NM
MPE-3	22-Jun-23	TBS	38	28-38	35.16	35.32	0.16	NA	NM	NM	NM	NM	NM

TABLE 1
SUMMARY OF GROUNDWATER MEASUREMENT AND WATER QUALITY DATA, 2020 to PRESENT
BMG HWY 537 LLAVES PIPELINE 2008 OIL RELEASE
Rio Arriba County, New Mexico

Well ID	Date Sampled	Surveyed TOC (ft)	Total Well Depth	Screen Interval	Depth to NAPL (ft)	Depth to Water (ft)	NAPL Thickness (ft)	GW Elev. (ft)	Temp. (°C)	Specific Conduct. (mS)	Dissolved Oxygen (mg/L)	pH	ORP (mV)
MPE-3	13-Sep-23	TBS	38	28-38	34.78	34.81	0.03	NA	NM	NM	NM	NM	NM
MPE-3	13-Dec-23	TBS	38	28-38	--	35.91	--	NA	NM	NM	NM	NM	NM
MPE-3	07-Mar-24	TBS	38	28-38	35.46	35.81	0.35	NA	NM - 0.35 feet NAPL				
MPE-3	29-May-24	TBS	38	28-38	35.66	36.03	0.37	NA	NM - 0.37 feet NAPL				
MPE-3	05-Sep-24	TBS	38	28-38	36.19	36.39	0.20	NA	NM - 0.20 feet NAPL				
MPE-3	05-Dec-24	TBS	38	28-38	36.01	36.24	0.23	NA	NM - 0.23 feet NAPL				
MPE-4	25-Mar-20	TBS	38	28-38	--	--	--	NA	NM - Lower and Upper Portions of Well Not Aligned Due				
MPE-4	23-Jun-20	TBS	38	28-38	--	--	--	NA					
MPE-4	23-Sep-20	TBS	38	28-38	--	--	--	NA	Well Damaged				
MPE-4	23-Nov-20	TBS	38	28-38	--	--	--	NA	Well Obstructed at 35.28 Ft				
MPE-4	17-Mar-21	TBS	38	28-38	--	--	--	NA	Well Obstructed at 35.28 Ft				
MPE-4	17-Jun-21	TBS	38	28-38	--	--	--	NA	Well Obstructed at 35.28 Ft				
MPE-4	29-Sep-21	TBS	38	28-38	--	--	--	NA	Well Obstructed at 35.25 Ft				
MPE-4	30-Nov-21	TBS	38	28-38	--	--	--	NA	Well Obstructed at 35.28 Ft				
MPE-4	08-Mar-22	TBS	38	28-38	--	--	--	NA	Well Obstructed at 35.25 Ft				
MPE-4	09-Jun-22	TBS	38	28-38	--	--	--	NA	Well Obstructed				
MPE-4	28-Sep-22	TBS	38	28-38	--	--	--	NA	Well Obstructed at 35.27 Ft				
MPE-4	21-Dec-22	TBS	38	28-38	--	--	--	NA	Well Obstructed				
MPE-4	13-Sep-23	TBS	38	28-38	33.32	--	2.19	NA	Well Obstructed at 35.51 Ft				
MPE-4	13-Dec-23	TBS	38	28-38	--	--	--	NA	Well Obstructed at 35.28 Ft				
MPE-4	07-Mar-24	TBS	38	28-38	36.49	36.64	0.15	NA	NM - 0.15 feet NAPL				
MPE-4	29-May-24	TBS	38	28-38	36.64	36.81	0.17	NA	NM - 0.17 feet NAPL				
MPE-4	05-Sep-24	TBS	38	28-38	36.96	37.04	0.08	NA	NM - 0.08 feet NAPL				
MPE-4	05-Dec-24	TBS	38	28-38	37.09	37.10	0.01	NA	NM - 0.01 feet NAPL				
MPE-5	10-Mar-20	TBS	40	30-40	37.22	37.92	0.70	NA	NM	NM	NM	NM	NM
MPE-5	25-Mar-20	TBS	40	30-40	37.21	37.83	0.62	NA	NM	NM	NM	NM	NM
MPE-5	23-Jun-20	TBS	40	30-40	37.42	38.10	0.68	NA	NM	NM	NM	NM	NM
MPE-5	23-Sep-20	TBS	40	30-40	37.72	38.35	0.63	NA	NM	NM	NM	NM	NM

TABLE 1
SUMMARY OF GROUNDWATER MEASUREMENT AND WATER QUALITY DATA, 2020 to PRESENT
BMG HWY 537 LLAVES PIPELINE 2008 OIL RELEASE
Rio Arriba County, New Mexico

Well ID	Date Sampled	Surveyed TOC (ft)	Total Well Depth	Screen Interval	Depth to NAPL (ft)	Depth to Water (ft)	NAPL Thickness (ft)	GW Elev. (ft)	Temp. (°C)	Specific Conduct. (mS)	Dissolved Oxygen (mg/L)	pH	ORP (mV)
MPE-5	23-Nov-20	TBS	40	30-40	37.70	38.29	0.59	NA	NM	NM	NM	NM	NM
MPE-5	17-Mar-21	TBS	40	30-40	37.80	38.41	0.61	NA	NM	NM	NM	NM	NM
MPE-5	17-Jun-21	TBS	40	30-40	37.95	38.28	0.33	NA	NM	NM	NM	NM	NM
MPE-5	29-Sep-21	TBS	40	30-40	37.93	--	--	NA	Well Obstructed at 39.3 Ft				
MPE-5	30-Nov-21	TBS	40	30-40	39.30	--	0.20	NA	NM	NM	NM	NM	NM
MPE-5	08-Mar-22	TBS	40	30-40	--	--	0.03	NA	NM	NM	NM	NM	NM
MPE-5	09-Jun-22	TBS	40	30-40	38.00	--	1.30	NA	NM	NM	NM	NM	NM
MPE-5	28-Sep-22	TBS	40	30-40	38.00	--	1.30	NA	NM	NM	NM	NM	NM
MPE-5	21-Dec-22	TBS	40	30-40	38.00	39.08	1.08	NA	NM	NM	NM	NM	NM
MPE-5	15-Mar-23	TBS	40	30-40	37.52	39.27	1.75	NA	NM	NM	NM	NM	NM
MPE-5	22-Jun-23	TBS	40	30-40	37.52	39.29	1.77	NA	NM	NM	NM	NM	NM
MPE-5	13-Sep-23	TBS	40	30-40	38.87	36.32	2.55	NA	NM	NM	NM	NM	NM
MPE-5	13-Dec-23	TBS	40	30-40	37.76	39.98	2.22	NA	NM	NM	NM	NM	NM
MPE-5	07-Mar-24	TBS	40	30-40	37.71	39.97	2.26	NA	NM - 2.26 feet NAPL				
MPE-5	29-May-24	TBS	40	30-40	38.00	39.93	1.93	NA	NM - 1.93 feet NAPL				
MPE-5	05-Sep-24	TBS	40	30-40	38.39	39.82	1.43	NA	NM - 1.43 feet NAPL				
MPE-5	05-Dec-24	TBS	40	30-40	36.38	40.06	3.68	NA	NM - 3.68 feet NAPL				
MPE-6	10-Mar-20	TBS	36	26-36	35.81	35.86	0.05	NA	NM	NM	NM	NM	NM
MPE-6	25-Mar-20	TBS	36	26-36	35.01	35.17	0.16	NA	NM	NM	NM	NM	NM
MPE-6	23-Jun-20	TBS	36	26-36	35.12	36.07	0.95	NA	NM	NM	NM	NM	NM
MPE-6	23-Sep-20	TBS	36	26-36	35.39	36.34	0.95	NA	NM	NM	NM	NM	NM
MPE-6	23-Nov-20	TBS	36	26-36	35.37	36.27	0.60	NA	NM	NM	NM	NM	NM
MPE-6	17-Mar-21	TBS	36	26-36	35.48	36.19	0.71	NA	NM	NM	NM	NM	NM
MPE-6	17-Jun-21	TBS	36	26-36	35.68	36.00	0.32	NA	NM	NM	NM	NM	NM
MPE-6	29-Sep-21	TBS	36	26-36	36.00	36.25	0.25	NA	NM	NM	NM	NM	NM
MPE-6	30-Nov-21	TBS	36	26-36	35.94	36.28	0.34	NA	NM	NM	NM	NM	NM
MPE-6	08-Mar-22	TBS	36	26-36	--	--	0.01	NA	NM	NM	NM	NM	NM
MPE-6	09-Jun-22	TBS	36	26-36	36.03	36.16	0.13	NA	NM	NM	NM	NM	NM
MPE-6	28-Sep-22	TBS	36	26-36	36.13	36.21	0.08	NA	NM	NM	NM	NM	NM

TABLE 1
SUMMARY OF GROUNDWATER MEASUREMENT AND WATER QUALITY DATA, 2020 to PRESENT
BMG HWY 537 LLAVES PIPELINE 2008 OIL RELEASE
Rio Arriba County, New Mexico

Well ID	Date Sampled	Surveyed TOC (ft)	Total Well Depth	Screen Interval	Depth to NAPL (ft)	Depth to Water (ft)	NAPL Thickness (ft)	GW Elev. (ft)	Temp. (°C)	Specific Conduct. (mS)	Dissolved Oxygen (mg/L)	pH	ORP (mV)
MPE-6	21-Dec-22	TBS	36	26-36	36.31	36.33	0.02	NA	NM	NM	NM	NM	NM
MPE-6	15-Mar-23	TBS	36	26-36	35.65	35.65	sheen	NA	NM	NM	NM	NM	NM
MPE-6	22-Jun-23	TBS	36	26-36	35.39	35.39	sheen	NA	NM	NM	NM	NM	NM
MPE-6	13-Sep-23	TBS	36	26-36	35.59	35.59	sheen	NA	NM	NM	NM	NM	NM
MPE-6	13-Dec-23	TBS	36	26-36	--	36.00	--	NA	NM	NM	NM	NM	NM
MPE-6	07-Mar-24	TBS	36	26-36	--	35.82	sheen	NA	NM	NM	NM	NM	NM
MPE-6	29-May-24	TBS	36	26-36	--	36.49	--	NA	NM	NM	NM	NM	NM
MPE-6	05-Sep-24	TBS	36	26-36	--	36.64	--	NA	NM	NM	NM	NM	NM
MPE-6	05-Dec-24	TBS	36	26-36	36.65	36.66	0.01	NA	NM	NM	NM	NM	NM
MPE-7	25-Mar-20	TBS	36	26-36	--	32.85	--	NA	NM	NM	NM	NM	NM
MPE-7	23-Jun-20	TBS	36	26-36	--	33.12	--	NA	NM	NM	NM	NM	NM
MPE-7	23-Sep-20	TBS	36	26-36	--	33.43	--	NA	NM	NM	NM	NM	NM
MPE-7	23-Nov-20	TBS	36	26-36	--	33.34	--	NA	NM	NM	NM	NM	NM
MPE-7	17-Mar-21	TBS	36	26-36	--	33.50	--	NA	NM	NM	NM	NM	NM
MPE-7	17-Jun-21	TBS	36	26-36	--	33.57	--	NA	NM	NM	NM	NM	NM
MPE-7	29-Sep-21	TBS	36	26-36	--	33.80	--	NA	NM	NM	NM	NM	NM
MPE-7	30-Nov-21	TBS	36	26-36	--	33.86	--	NA	NM	NM	NM	NM	NM
MPE-7	08-Mar-22	TBS	36	26-36	--	33.81	--	NA	NM	NM	NM	NM	NM
MPE-7	09-Jun-22	TBS	36	26-36	--	33.92	--	NA	NM	NM	NM	NM	NM
MPE-7	28-Sep-22	TBS	36	26-36	--	33.88	--	NA	NM	NM	NM	NM	NM
MPE-7	21-Dec-22	TBS	36	26-36	--	33.64	--	NA	NM	NM	NM	NM	NM
MPE-7	22-Jun-23	TBS	36	26-36	--	33.22	--	NA	NM	NM	NM	NM	NM
MPE-7	13-Sep-23	TBS	36	26-36	--	33.91	--	NA	NM	NM	NM	NM	NM
MPE-7	13-Dec-23	TBS	36	26-36	--	33.64	--	NA	NM	NM	NM	NM	NM
MPE-7	07-Mar-24	TBS	36	26-36	--	33.58	--	NA	NM	NM	NM	NM	NM
MPE-7	29-May-24	TBS	36	26-36	--	33.74	--	NA	NM	NM	NM	NM	NM
MPE-7	05-Sep-24	TBS	36	26-36	--	34.03	--	NA	NM	NM	NM	NM	NM
MW-2	25-Mar-20	7079.94	40	25-40	--	Dry	--	NA	NM - WELL DRY				
MW-2	23-Jun-20	7079.94	40	25-40	--	Dry	--	NA	NM - WELL DRY				

TABLE 1
SUMMARY OF GROUNDWATER MEASUREMENT AND WATER QUALITY DATA, 2020 to PRESENT
BMG HWY 537 LLAVES PIPELINE 2008 OIL RELEASE
Rio Arriba County, New Mexico

Well ID	Date Sampled	Surveyed TOC (ft)	Total Well Depth	Screen Interval	Depth to NAPL (ft)	Depth to Water (ft)	NAPL Thickness (ft)	GW Elev. (ft)	Temp. (°C)	Specific Conduct. (mS)	Dissolved Oxygen (mg/L)	pH	ORP (mV)
MW-2	23-Sep-20	7079.94	40	25-40	--	Dry	--	NA	NM - WELL DRY				
MW-2	23-Nov-20	7079.94	40	25-40	--	Dry	--	NA	NM - WELL DRY				
MW-2	17-Mar-21	7079.94	40	25-40	--	Dry	--	NA	NM - WELL DRY				
MW-2	17-Jun-21	7097.94	40	25-40	--	Dry	--	NA	NM - WELL DRY				
MW-2	29-Sep-21	7097.94	40	25-40	--	Dry	--	NA	NM - WELL DRY				
MW-2	30-Nov-21	7097.94	40	25-40	--	Dry	--	NA	NM - WELL DRY				
MW-2	08-Mar-22	7097.94	40	25-40	--	Dry	--	NA	NM - WELL DRY				
MW-2	09-Jun-22	7097.94	40	25-40	--	Dry	--	NA	NM - WELL DRY				
MW-2	28-Sep-22	7097.94	40	25-40	--	Dry	--	NA	NM - WELL DRY				
MW-2	21-Dec-22	7097.94	40	25-40	--	Dry	--	NA	NM - WELL DRY				
MW-2	22-Jun-23	7097.94	40	25-40	--	Dry	--	NA	NM - WELL DRY				
MW-2	13-Sep-23	7097.94	40	25-40	--	Dry	--	NA	NM - WELL DRY				
MW-2	13-Dec-23	7097.94	40	25-40	--	Dry	--	NA	NM - WELL DRY				
MW-2	07-Mar-24	7097.94	40	25-40	--	Dry	--	NA	NM - WELL DRY				
MW-2	29-May-24	7097.94	40	25-40	--	Dry	--	NA	NM - WELL DRY				
MW-2	05-Sep-24	7097.94	40	25-40	--	Dry	--	NA	NM - WELL DRY				
MW-7	25-Mar-20	7090.15	40	25-40	--	40.61	--	7049.54	12.5	2.00	1.78	7.13	168.9
MW-7	23-Jun-20	7090.15	40	25-40	--	40.85	--	7049.30	19.4	1.96	4.38	7.53	167.6
MW-7	23-Sep-20	7090.15	40	25-40	--	41.14	--	7049.01	NM	NM	NM	NM	NM
MW-7	23-Nov-20	7090.15	40	25-40	--	41.16	--	7048.99	NM	NM	NM	NM	NM
MW-7	17-Mar-21	7090.15	40	25-40	--	41.23	--	7048.92	NM	NM	NM	NM	NM
MW-7	17-Jun-21	7090.15	40	25-40	--	41.36	--	7048.79	NM	NM	NM	NM	NM
MW-7	29-Sep-21	7090.15	40	25-40	--	44.54	--	7045.61	NM	NM	NM	NM	NM
MW-7	30-Nov-21	7090.15	40	25-40	--	41.67	--	7048.48	NM	NM	NM	NM	NM
MW-7	08-Mar-22	7090.15	40	25-40	--	41.63	--	7048.52	NM	NM	NM	NM	NM
MW-7	09-Jun-22	7090.15	40	25-40	--	Dry	--	NA	NM - WELL DRY				
MW-7	28-Sep-22	7090.15	40	25-40	--	Dry	--	NA	NM - WELL DRY				
MW-7	21-Dec-22	7090.15	40	25-40	--	41.50	--	7048.65	NM	NM	NM	NM	NM

TABLE 1
SUMMARY OF GROUNDWATER MEASUREMENT AND WATER QUALITY DATA, 2020 to PRESENT
BMG HWY 537 LLAVES PIPELINE 2008 OIL RELEASE
Rio Arriba County, New Mexico

Well ID	Date Sampled	Surveyed TOC (ft)	Total Well Depth	Screen Interval	Depth to NAPL (ft)	Depth to Water (ft)	NAPL Thickness (ft)	GW Elev. (ft)	Temp. (°C)	Specific Conduct. (mS)	Dissolved Oxygen (mg/L)	pH	ORP (mV)
MW-7	22-Jun-23	7090.15	40	25-40	--	41.09	--	7049.06	NM	NM	NM	NM	NM
MW-7	13-Sep-23	7090.15	40	25-40	--	Dry	--	Dry	NM - WELL DRY				
MW-7	13-Dec-23	7090.15	40	25-40	--	41.43	--	7048.72	NM	NM	NM	NM	NM
MW-7	07-Mar-24	7090.15	40	25-40	--	41.44	--	7048.71	NM	NM	NM	NM	NM
MW-7	29-May-24	7090.15	40	25-40	--	41.59	--	7048.56	NM	NM	NM	NM	NM
MW-7	05-Sep-24	7090.15	40	25-40	--	41.86	--	7048.29	NM	NM	NM	NM	NM
MW-9R	10-Mar-20	TBS	38	28-38	--	35.20	--	NA	Not Measured				
MW-9R	25-Mar-20	TBS	38	28-38	35.07	35.12	0.05	NA	NM - 0.05 feet NAPL				
MW-9R	23-Jun-20	TBS	38	28-38	35.30	35.37	0.07	NA	NM - 0.07 feet NAPL				
MW-9R	23-Sep-20	TBS	38	28-38	35.57	35.86	0.29	NA	NM - 0.29 feet NAPL				
MW-9R	23-Nov-20	TBS	38	28-38	35.55	35.70	0.15	NA	NM - 0.15 feet NAPL				
MW-9R	17-Mar-21	TBS	38	28-38	35.66	35.76	0.10	NA	NM - 0.10 feet NAPL				
MW-9R	17-Jun-21	TBS	38	28-38	35.77	35.89	0.12	NA	NM - 0.12 feet NAPL				
MW-9R	29-Sep-21	TBS	38	28-38	36.01	36.14	0.13	NA	NM - 0.13 feet NAPL				
MW-9R	30-Nov-21	TBS	38	28-38	36.05	36.28	0.23	NA	NM - 0.23 feet NAPL				
MW-9R	08-Mar-22	TBS	38	28-38	--	--	0.01	NA	NM - 0.01 feet NAPL				
MW-9R	09-Jun-22	TBS	38	28-38	36.15	37.14	0.99	NA	NM - 0.99 feet NAPL				
MW-9R	28-Sep-22	TBS	38	28-38	36.11	36.15	0.04	NA	NM - 0.04 feet NAPL				
MW-9R	21-Dec-22	TBS	38	28-38	35.88	35.89	0.01	NA	NM - 0.01 feet NAPL				
MW-9R	15-Mar-23	TBS	38	28-38	--	37.52	--	NA	NM	NM	NM	NM	NM
MW-9R	22-Jun-23	TBS	38	28-38	--	--	--	NA	Did not gauge				
MW-9R	13-Sep-23	TBS	38	28-38	35.49	35.49	sheen	NA	NM	NM	NM	NM	NM
MW-9R	13-Dec-23	TBS	38	28-38	--	35.86	--	NA	NM - Sheen noted while bailing				
MW-9R	07-Mar-24	TBS	38	28-38	--	35.83	--	NA	NM	NM	NM	NM	NM
MW-9R	29-May-24	TBS	38	28-38	--	35.98	--	NA	NM	NM	NM	NM	NM
MW-9R	05-Sep-24	TBS	38	28-38	36.28	36.31	0.03	NA	NM - 0.03 feet NAPL				
MW-9R	05-Dec-24	TBS	38	28-38	--	36.88	sheen	NA	NM - Sheen				

TABLE 1
 SUMMARY OF GROUNDWATER MEASUREMENT AND WATER QUALITY DATA, 2020 to PRESENT
 BMG HWY 537 LLAVES PIPELINE 2008 OIL RELEASE
 Rio Arriba County, New Mexico

<i>Well ID</i>	<i>Date Sampled</i>	<i>Surveyed TOC (ft)</i>	<i>Total Well Depth</i>	<i>Screen Interval</i>	<i>Depth to NAPL (ft)</i>	<i>Depth to Water (ft)</i>	<i>NAPL Thickness (ft)</i>	<i>GW Elev. (ft)</i>	<i>Temp. (°C)</i>	<i>Specific Conduct. (mS)</i>	<i>Dissolved Oxygen (mg/L)</i>	<i>pH</i>	<i>ORP (mV)</i>
----------------	---------------------	--------------------------	-------------------------	------------------------	---------------------------	----------------------------	----------------------------	----------------------	-------------------	-------------------------------	--------------------------------	-----------	-----------------

NOTES:

NA - NOT AVAILABLE
 NM - NOT MEASURED
 NS - NOT SAMPLED
 TBS - TO BE SURVEYED

TABLE 2
SUMMARY OF GROUNDWATER ANALYTICAL RESULTS -
VOLATILE ORGANICS AND PETROLEUM HYDROCARBONS
BMG HWY 537 LLAVES PIPELINE 2008 OIL RELEASE
Rio Arriba County, New Mexico

Well ID	Date Sampled	Benzene (µg/L)	Toluene (µg/L)	Ethyl- benzene (µg/L)	Total Xylenes (µg/L)	TPH-GRO (mg/L)	TPH-DRO (mg/L)	TPH-MRO (mg/L)
Analytical Method		8021/8260	8021/826	8021/8260	8021/8260	8015D	8015M/D	8015M/D
New Mexico WQCC		5	1000	700	620	NE	NE	NE
MW-1	05-May-08	<1.0	<1.0	<1.0	<2.0	0.092	<1.0	<5.0
MW-1	24-Sep-08	<1.0	<1.0	<1.0	<2.0	<0.050	<1.0	<5.0
MW-1	02-Jan-09	<1.0	<1.0	<1.0	<2.0	<0.050	<1.0	<5.0
MW-1	07-Apr-09	<1.0	<1.0	<1.0	<2.0	<0.050	<1.0	<5.0
MW-1	07-Jul-09	<1.0	<1.0	<1.0	<2.0	<0.050	<1.0	<5.0
MW-1	12-Oct-09	<1.0	<1.0	<1.0	<2.0	<0.050	<1.0	<5.0
MW-1	12-Jan-10	<1.0	<1.0	<1.0	<2.0	<0.050	<1.0	<5.0
MW-1	13-Oct-10	<1.0	<1.0	<1.0	<2.0	<0.050	<1.0	<5.0
MW-1	20-Jan-11	<1.0	<1.0	<1.0	<2.0	<0.050	<1.0	<5.0
MW-1	10-May-11	<1.0	<1.0	<1.0	<2.0	<0.050	<1.0	<5.0
MW-1	07-Aug-17	Plugged and Abandoned						
MW-2	05-May-08	<1.0	<1.0	<1.0	<2.0	<0.050	<1.0	<5.0
MW-2	24-Sep-08	<1.0	<1.0	<1.0	<2.0	<0.050	<1.0	<5.0
MW-2	02-Jan-09	<1.0	<1.0	<1.0	<2.0	<0.050	<1.0	<5.0
MW-2	07-Apr-09	<1.0	<1.0	<1.0	<2.0	<0.050	<1.0	<5.0
MW-2	07-Jul-09	<1.0	<1.0	<1.0	<2.0	<0.050	<1.0	<5.0
MW-2	12-Oct-09	<1.0	<1.0	<1.0	<2.0	<0.050	<1.0	<5.0
MW-2	12-Jan-10	<1.0	<1.0	<1.0	<2.0	<0.050	<1.0	<5.0
MW-2	13-Oct-10	NS - Well Filled with Roots						
MW-2	20-Jan-11	NS - Well Filled with Roots						
MW-2	10-May-11	<1.0	<1.0	<1.0	<2.0	<0.050	<1.0	<5.0
MW-3	05-May-08	<1.0	<1.0	<1.0	<2.0	<0.050	<1.0	<5.0
MW-3	24-Sep-08	<1.0	<1.0	<1.0	<2.0	<0.050	<1.0	<5.0
MW-3	02-Jan-09	<1.0	<1.0	<1.0	<2.0	<0.050	<1.0	<5.0
MW-3	07-Apr-09	<1.0	<1.0	<1.0	<2.0	<0.050	<1.0	<5.0
MW-3	07-Jul-09	NS - Well filled with sediment						
MW-3	12-Oct-09	<1.0	<1.0	<1.0	<2.0	<0.050	<1.0	<5.0
MW-3	12-Jan-10	<1.0	<1.0	<1.0	<2.0	<0.050	<1.0	<5.0
MW-3	13-Oct-10	<1.0	<1.0	<1.0	<2.0	<0.050	<1.0	<5.0
MW-3	20-Jan-11	<1.0	<1.0	<1.0	<2.0	<0.050	<1.0	<5.0
MW-3	10-May-11	<1.0	<1.0	<1.0	<2.0	<0.050	<1.0	<5.0
MW-3	07-Aug-17	Plugged and Abandoned						
MW-4	05-May-08	<1.0	<1.0	<1.0	<2.0	<0.050	<1.0	<5.0

TABLE 2
 SUMMARY OF GROUNDWATER ANALYTICAL RESULTS -
 VOLATILE ORGANICS AND PETROLEUM HYDROCARBONS
 BMG HWY 537 LLAVES PIPELINE 2008 OIL RELEASE
 Rio Arriba County, New Mexico

Well ID	Date Sampled	Benzene (µg/L)	Toluene (µg/L)	Ethyl- benzene (µg/L)	Total Xylenes (µg/L)	TPH-GRO (mg/L)	TPH-DRO (mg/L)	TPH-MRO (mg/L)
Analytical Method		8021/8260	8021/826	8021/8260	8021/8260	8015D	8015M/D	8015M/D
New Mexico WQCC		5	1000	700	620	NE	NE	NE
MW-4	24-Sep-08	<1.0	<1.0	<1.0	<2.0	<0.050	<1.0	<5.0
MW-4	02-Jan-09	<1.0	<1.0	<1.0	<2.0	<0.050	<1.0	<5.0
MW-4	07-Apr-09	<1.0	<1.0	<1.0	<2.0	<0.050	<1.0	<5.0
MW-4	07-Jul-09	<1.0	<1.0	<1.0	<2.0	<0.050	<1.0	<5.0
MW-4	12-Oct-09	<1.0	<1.0	<1.0	<2.0	<0.050	<1.0	<5.0
MW-4	12-Jan-10	<1.0	<1.0	<1.0	<2.0	<0.050	<1.0	<5.0
MW-4	13-Oct-10	<1.0	<1.0	<1.0	<2.0	<0.050	<1.0	<5.0
MW-4	20-Jan-11	<1.0	<1.0	<1.0	<2.0	<0.050	<1.0	<5.0
MW-4	09-May-11	<1.0	<1.0	<1.0	<2.0	<0.050	<1.0	<5.0
MW-4	07-Aug-17	Plugged and Abandoned						
MW-5	05-May-08	NS - Well Dry						
MW-5	07-Aug-17	Plugged and Abandoned						
MW-6	05-May-08	<1.0	<1.0	<1.0	<2.0	<0.050	<1.0	<5.0
MW-6	24-Sep-08	<1.0	<1.0	<1.0	<2.0	<0.050	<1.0	<5.0
MW-6	02-Jan-09	<1.0	<1.0	<1.0	<2.0	<0.050	<1.0	<5.0
MW-6	07-Apr-09	<1.0	<1.0	<1.0	<2.0	<0.050	<1.0	<5.0
MW-6	07-Jul-09	<1.0	<1.0	<1.0	<2.0	<0.050	<1.0	<5.0
MW-6	12-Oct-09	<1.0	<1.0	<1.0	<2.0	<0.050	<1.0	<5.0
MW-6	12-Jan-10	<1.0	<1.0	<1.0	<2.0	<0.050	<1.0	<5.0
MW-6	13-Oct-10	<1.0	<1.0	<1.0	<2.0	<0.050	<1.0	<5.0
MW-6	20-Jan-11	<1.0	<1.0	<1.0	<2.0	<0.050	<1.0	<5.0
MW-6	09-May-11	<1.0	<1.0	<1.0	<2.0	<0.050	<1.0	<5.0
MW-6	07-Aug-17	Plugged and Abandoned						
MW-7	05-May-08	2.8	<1.0	<1.0	<2.0	0.40	<1.0	<5.0
MW-7	24-Sep-08	<1.0	<1.0	<1.0	<2.0	0.069	<1.0	<5.0
MW-7	02-Jan-09	<1.0	<1.0	<1.0	<2.0	<0.050	<1.0	<5.0
MW-7	07-Apr-09	<1.0	<1.0	<1.0	<2.0	<0.050	<1.0	<5.0
MW-7	07-Jul-09	<1.0	<1.0	<1.0	<2.0	<0.050	<1.0	<5.0
MW-7	12-Oct-09	<1.0	<1.0	<1.0	<2.0	<0.050	<1.0	<5.0
MW-7	12-Jan-10	<1.0	<1.0	<1.0	<2.0	<0.050	<1.0	<5.0
MW-7	13-Oct-10	<1.0	<1.0	<1.0	<2.0	<0.050	<1.0	<5.0
MW-7	20-Jan-11	<1.0	<1.0	<1.0	<2.0	<0.050	<1.0	<5.0
MW-7	09-May-11	<1.0	<1.0	<1.0	<2.0	<0.050	<1.0	<5.0
MW-8	05-May-08	26	10	<1.0	<2.0	1.10	<1.0	<5.0

TABLE 2
SUMMARY OF GROUNDWATER ANALYTICAL RESULTS -
VOLATILE ORGANICS AND PETROLEUM HYDROCARBONS
BMG HWY 537 LLAVES PIPELINE 2008 OIL RELEASE
Rio Arriba County, New Mexico

Well ID	Date Sampled	Benzene (µg/L)	Toluene (µg/L)	Ethyl- benzene (µg/L)	Total Xylenes (µg/L)	TPH-GRO (mg/L)	TPH-DRO (mg/L)	TPH-MRO (mg/L)
Analytical Method		8021/8260	8021/826	8021/8260	8021/8260	8015D	8015M/D	8015M/D
New Mexico WQCC		5	1000	700	620	NE	NE	NE
MW-8	24-Sep-08	65	26	<1.0	<2.0	0.90	<1.0	<5.0
MW-8	05-Jan-09	45	25	<1.0	2.2	1.0	<1.0	<5.0
MW-8	07-Apr-09	25	20	<1.0	2.9	0.89	<1.0	<5.0
MW-8	07-Jul-09	7.5	4.5	<1.0	<2.0	0.21	<1.0	<5.0
MW-8	12-Oct-09	15	11	<1.0	<2.0	0.52	<1.0	<5.0
MW-8	12-Jan-10	<1.0	<1.0	<1.0	<2.0	0.088	<1.0	<5.0
MW-8	13-Oct-10	12	<1.0	1.7	16	0.25	<1.0	<5.0
MW-8	20-Jan-11	35	<1.0	6.5	6.3	0.16	<1.0	<5.0
MW-8	10-May-11	<1.0	<1.0	<1.0	<2.0	<0.050	<1.0	<5.0
MW-8	15-Aug-11	<2.0	<2.0	<2.0	<4.0	<0.10	<1.0	<5.0
MW-8	21-Nov-11	<2.0	<2.0	<2.0	<4.0	<0.10	2.2	<5.0
MW-8	21-Feb-12	<2.0	<2.0	<2.0	<4.0	<0.10	<1.0	<5.0
MW-8	24-May-12	<2.0	<2.0	<2.0	<4.0	<0.10	<1.0	<5.0
MW-8	21-Sep-12	<1.0	<1.0	<1.0	<2.0	<0.050	<1.0	<5.0
MW-8	04-Dec-12	<1.0	<1.0	<1.0	<2.0	<0.050	<1.0	<5.0
MW-8	26-Mar-13	<1.0	<1.0	<1.0	<2.0	<0.050	<1.0	<5.0
MW-8	26-Jun-13	<1.0	<1.0	<1.0	<2.0	<0.050	<1.0	<5.0
MW-8	07-Aug-17	Plugged and Abandoned						
MW-9	05-May-08	6.2	7.5	<1.0	2.3	0.90	<1.0	<5.0
MW-9	24-Sep-08	17	12	<1.0	<2.0	0.32	<1.0	<5.0
MW-9	05-Jan-09	NS - Well Dry						
MW-9	07-Apr-09	12	6.2	<1.0	<2.0	0.32	<1.0	<5.0
MW-9	07-Jul-09	7.0	5.3	<1.0	<2.0	0.28	<1.0	<5.0
MW-9	12-Oct-09	26	2.0	<1.0	<2.0	0.31	<1.0	<5.0
MW-9	12-Jan-10	NAPL Present through Current Date						
MW-9R	25-Sep-19	<1.0	<1.0	56	80	0.87	<1.0	<5.0
MW-9R	25-Mar-20	<2.0	<2.0	50	44	0.66	1.2	<5.0
MW-9R	23-Jun-20	<1.0	<1.0	11	23	0.86	46	20
MW-9R	23-Sep-20	<5.0	<5.0	38	100	3.8	550	270
MW-9R	23-Nov-20	<5.0	<5.0	12	29	1.0	250	120
MW-9R	17-Mar-21	<1.0	<1.0	<1.0	6.7	2.9	220	98
MW-9R	29-Sep-21	NS - Insufficient Water						
MW-9R	30-Nov-21	NS - Insufficient Water						
MW-9R	08-Mar-22	NS - Insufficient Water						
MW-9R	09-Jun-22	NS - Insufficient Water						
MW-9R	28-Sep-22	<2.0	<2.0	<2.0	<3.0	NA	NA	NA

TABLE 2
SUMMARY OF GROUNDWATER ANALYTICAL RESULTS -
VOLATILE ORGANICS AND PETROLEUM HYDROCARBONS
BMG HWY 537 LLAVES PIPELINE 2008 OIL RELEASE
Rio Arriba County, New Mexico

Well ID	Date Sampled	Benzene ($\mu\text{g/L}$)	Toluene ($\mu\text{g/L}$)	Ethyl- benzene ($\mu\text{g/L}$)	Total Xylenes ($\mu\text{g/L}$)	TPH-GRO (mg/L)	TPH-DRO (mg/L)	TPH-MRO (mg/L)
Analytical Method		8021/8260	8021/826	8021/8260	8021/8260	8015D	8015M/D	8015M/D
New Mexico WQCC		5	1000	700	620	NE	NE	NE
MW-9R	21-Dec-22	<2.0	<2.0	<2.0	<3.0	0.24	NA	NA
MW-9R	13-Dec-23	<2.0	<2.0	<2.0	<3.0	0.34	31	13
MW-9R	05-Dec-24	<0.23	<0.25	<0.21	<0.37	0.054	36	17

NOTES:

NS - Not Sampled
NA - Not Analyzed
TPH - Total Petroleum Hydrocarbons
GRO - Gasoline Range Organics
DRO - Diesel Range Organics
MRO - Motor Oil Range Organics

TABLE 3
SUMMARY OF GROUNDWATER ANALYTICAL RESULTS - WQCC GROUNDWATER STANDARDS
(NMAC 20.6.2.3103)
BMG HWY 537 LLAVES PIPELINE 2008 OIL RELEASE
Rio Arriba County, New Mexico

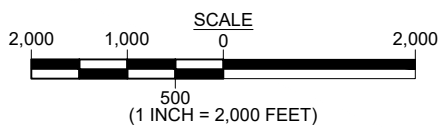
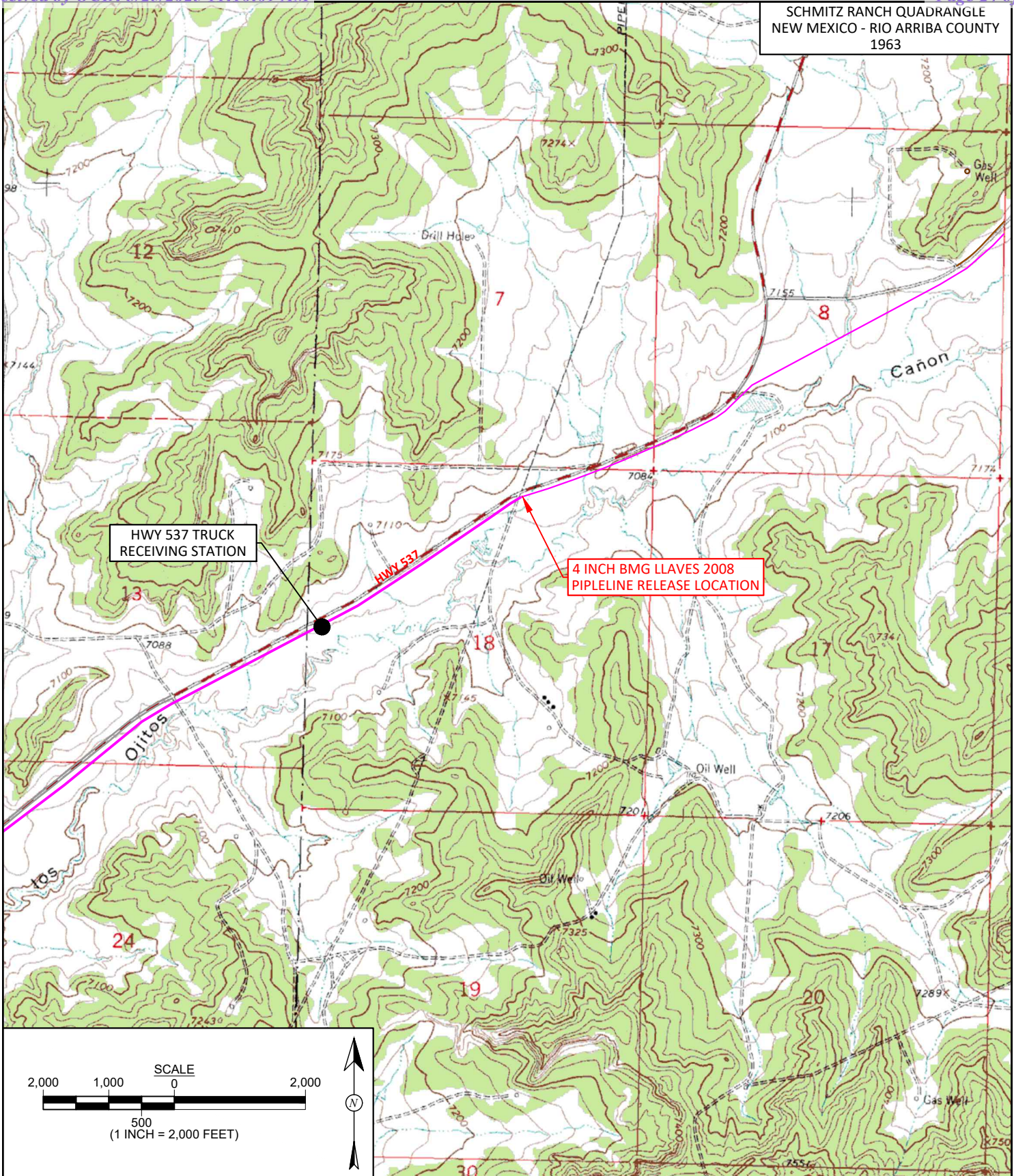
<i>Well ID</i>	<i>Sample Date</i>	<i>Total Dissolved Solids</i>	<i>Dissolved Iron</i>	<i>Dissolved Manganese</i>	<i>Phenols</i>
<i>Analytical Method</i>		<i>2540C</i>	<i>200.7/6010B</i>	<i>200.7/6010B</i>	<i>SW-846 9067</i>
<i>NM WQCC Standard</i>		<i>1,000</i>	<i>1.0</i>	<i>0.2</i>	<i>0.005</i>
MW-7	23-Jun-20	NA	0.11	0.18	NA
MW-7	13-Dec-23	980	NA	NA	NA
MW-9R	25-Sep-19	1,040	4.2 (T)	3.3 (T)	0.0042
MW-9R	25-Mar-20	NA	1.9	2.5	NA
MW-9R	6-Oct-22	NA	0.0096	0.0041	0.016
MW-9R	13-Dec-23	1,100	1.1	3.9	<0.003
MW-9R	5-Dec-24	1,200	0.070	2.8	0.23
MPE-5	13-Dec-23	2,910	NA	NA	NA

NOTES:

- < - Analyte not detected above listed method limit
 - NA - Not analyzed
 - NE - Not established
 - mg/L - Milligrams per liter (ppm)
 - (T) - Total
- Bold where results are above WQCC standards.**

Figures

SCHMITZ RANCH QUADRANGLE
 NEW MEXICO - RIO ARRIBA COUNTY
 1963



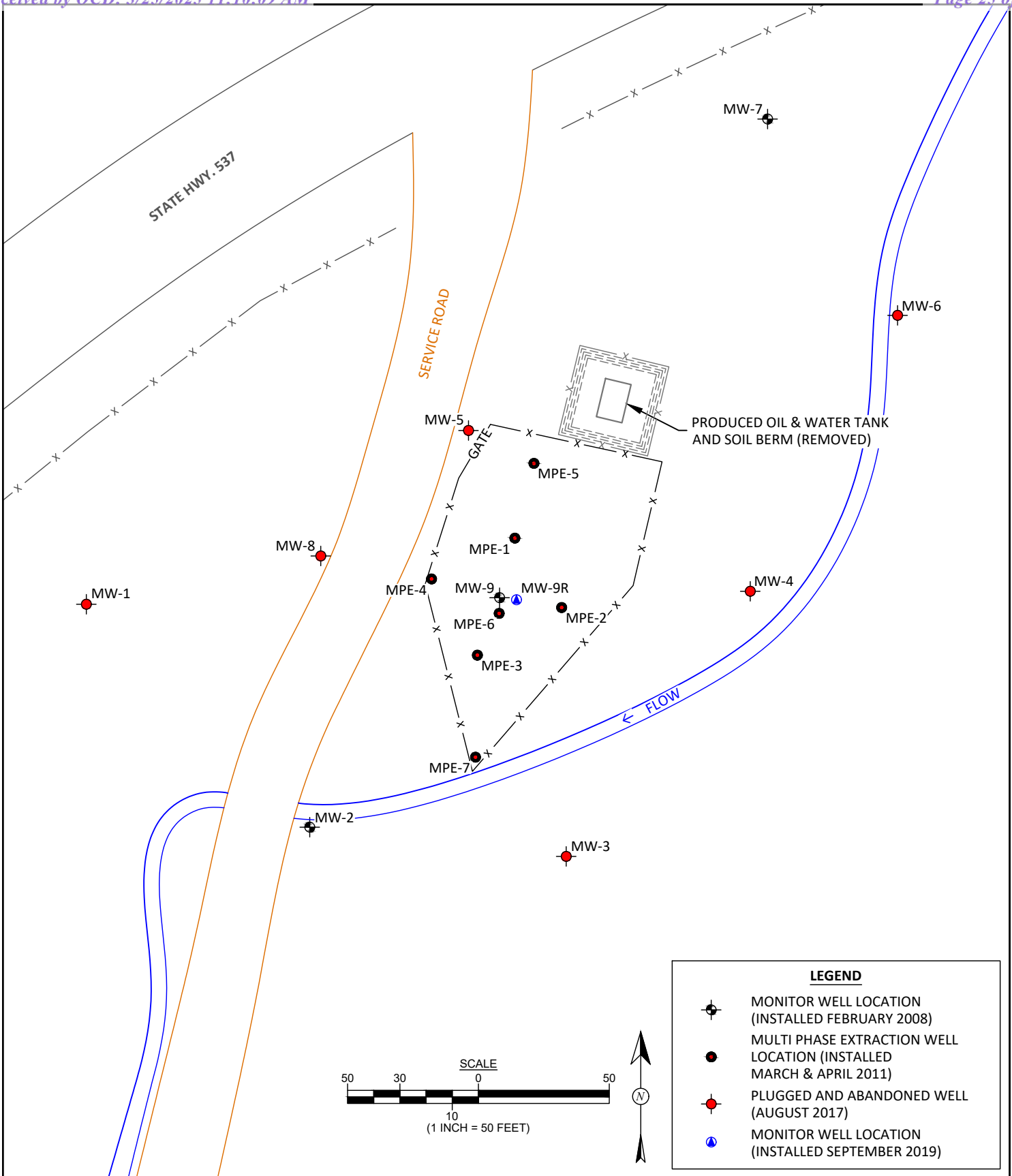
DRAWN BY: C. Lameman	DATE DRAWN: March 3, 2017
REVISIONS BY: C. Lameman	DATE REVISED: January 20, 2025
CHECKED BY: L. Cupps	DATE CHECKED: January 20, 2025
APPROVED BY: E. McNally	DATE APPROVED: January 20, 2025

FIGURE 1

TOPOGRAPHIC SITE LOCATION MAP
 BMG HIGHWAY 537
 LLAVES 2008 PIPELINE OIL RELEASE
 NW¼ NE¼, SECTION 18, T25N, R3W
 RIO ARRIBA COUNTY, NEW MEXICO
 N36.40357, W107.18422

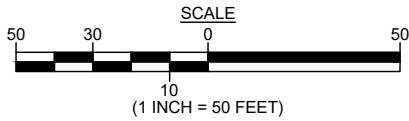


**animas
 environmental
 services**
 Farmington, NM
 animasenvironmental.com



LEGEND

- MONITOR WELL LOCATION (INSTALLED FEBRUARY 2008)
- MULTI PHASE EXTRACTION WELL LOCATION (INSTALLED MARCH & APRIL 2011)
- PLUGGED AND ABANDONED WELL (AUGUST 2017)
- MONITOR WELL LOCATION (INSTALLED SEPTEMBER 2019)



animas environmental services
 Farmington, NM
 animasenvironmental.com

DRAWN BY: C. Lameman	DATE DRAWN: March 3, 2017
REVISIONS BY: C. Lameman	DATE REVISED: January 20, 2025
CHECKED BY: L. Cupps	DATE CHECKED: January 20, 2025
APPROVED BY: E. McNally	DATE APPROVED: January 20, 2025

FIGURE 2

GENERAL SITE MAP
 BMG HIGHWAY 537
 LLAVES 2008 PIPELINE OIL RELEASE
 NW³/₄ NE³/₄, SECTION 18, T25N, R3W
 RIO ARRIBA COUNTY, NEW MEXICO
 N36.40357, W107.18422

Appendices

NAPL Recovery Form

Animas Environmental Services
 624 E. Comanche St., Farmington NM 87401
 animasenvironmental.com (505) 564-2281

Site:		BMG					Project No.:			
Location:		HWY 537 2008 Release					Date:		3-7-24	
Project:		NAPL Recovery					Arrival Time:		10:30	
Sampling Technician:		JB					Air Temp:		50° Overcast	
Well ID	Start Time/End Time	Initial Depth to NAPL (ft.)	Initial Depth to Water (ft.)	Initial NAPL Thickness (ft.)	Final Depth to NAPL (ft.)	Final Depth to Water (ft.)	Final NAPL Thickness (ft.)	Purged Volume (gal.)	Method / Notes / Observations	
MPE-3	11:06 / 11:45	35.46	35.81	.35	35.49	35.59	.10	2L NAPL	Removed NAPL replaced sock	
MPE-4	12:15 / 12:51	36.49	36.44	.15	—	—	—	1050 ML NAPL	Obstruction removed TDB-41.20	
MPE-6	12:01 / 12:10	ND	35.82	ND Screen?	—	35.82	—	Ø	sock replaced	
MPE-1	13:01 / 13:15	ND	37.36	ND Screen?	—	42.88	—	1g H ₂ O	SG/H ₂ O mix removed	
MPE-5	13:29 / 14:10	37.71	39.97	2.26	38.38	38.42	.04	2150 ML NAPL	MW- producing steady NAPL	
Well ID	Start Time/End Time	Initial Depth to NAPL (ft.)	Initial Depth to Water (ft.)	Initial NAPL Thickness (ft.)	Final Depth to NAPL (ft.)	Final Depth to Water (ft.)	Final NAPL Thickness (ft.)	Purged Volume (gal.)	Method / Notes / Observations	

Purged NAPL and Water Storage, Transport, and Disposal Information: *Onsite holding barrel*

ND = Not Detected

NAPL Recovery Form

Site:	BMG	Project No.:	
Location:	HWY 537 2008 Release	Date:	05/29/24
Project:	NAPL Recovery	Arrival Time:	12:35
Sampling Technician:	ED/WT	Air Temp:	81°

Well ID	Start Time/End Time	Initial Depth to NAPL (ft.)	Initial Depth to Water (ft.)	Initial NAPL Thickness (ft.)	Final Depth to NAPL (ft.)	Final Depth to Water (ft.)	Final NAPL Thickness (ft.)	Purged Volume (gal.)	Method / Notes / Observations
MPE-4	13:19 13:36	36.64	36.81	.17	36.85	36.87	.02	.5	APPROX 25 mL removed
MPE-3	13:38 14:04	35.86	36.03	.37	35.74	35.93	0.19	1	APPROX 1.75 mL NAPL removed
MPE-6	14:06 14:09		36.49						
MPE-1	14:15 14:37		37.38						
MPE-2	14:40 14:42		35.51						
MPE-5	14:45 15:30	38.00	39.93	1.93	38.41	38.56	0.15	1.25	1 st DRAW 650 ML OF NAPL 2 nd DRAW 150 ML OF NAPL 3 rd DRAW 150 ML 4 TH DRAW 150 ML FINAL DRAWS 150 ML Total = 1.25 L

Purged NAPL and Water Storage, Transport, and Disposal Information:

NAPL Recovery Form

Site:	BMG	Project No.:	
Location:	HWY 537 2008 Release	Date:	9/5/24
Project:	NAPL Recovery	Arrival Time:	13:55
Sampling Technician:		Air Temp:	81° - Clear - Breezy

Well ID	Start Time/End Time	Initial Depth to NAPL (ft.)	Initial Depth to Water (ft.)	Initial NAPL Thickness (ft.)	Final Depth to NAPL (ft.)	Final Depth to Water (ft.)	Final NAPL Thickness (ft.)	Purged Volume (gal.)	Method / Notes / Observations
MW-9R	14:29 / 14:44	36.28	36.31	.03	ND	38.31	--	.5	ND = Not Detected / Sack Added
MPE-3	14:49 / 15:20	36.19	36.39	.20	36.27	36.32	.05	.75	Sack Replaced
MPE-6	14:28 / 15:34	--	36.64	ND	--	36.64	--	0	Clear H ₂ O
MPE-4	14:50 / 15:50	36.96	37.04	.08	37.02	37.04	.02	.25	Sack Replaced
MPE-1	15:59 / 16:04	0 ND	37.63	0	0	37.63	0	0	Sack Replaced
MPE-5	16:10	38.39	39.82	1.43	38.84	38.89	.05	.75	sack Replaced

Purged NAPL and Water Storage, Transport, and Disposal Information:

NAPL Recovery Form						Animas Environmental Services 624 E. Comanche St., Farmington NM 87401 animasenvironmental.com (505) 564-2281					
Site:		BMG Hwy 537 2008 Release				Project No.:		080101			
Location:		Hwy 537, Rio Arriba County, New Mexico				Date:		12-05-24			
Project:		NAPL Recovery				Arrival Time:		11:05			
Sampling Technician:				JL/JO		Air Temp:				46 F	
Well ID	Start Time/End Time	Initial Depth to NAPL (ft.)	Initial Depth to Water (ft.)	Initial NAPL Thickness (ft.)	Final Depth to NAPL (ft.)	Final Depth to Water (ft.)	Final NAPL Thickness (ft.)	Purged Volume (gal.)	Method / Notes / Observations		
MPE-3	11:26 11:51	36.01	36.24	0.23	36.06	36.12	0.06	0.25	removed sock replaced w/ new @ 11:51 250 mL NAPL recovered		
MPE-6	11:58 12:00	36.65	36.66	0.01	36.65	36.66	0.01	0	removed sock sock replaced no NAPL purged		
MPE-4	12:05 12:14	37.09	37.10	37.01	37.09	37.10	0.01	0	removed sock sock replaced w/ new NO NAPL purged		
MPE-1	13:01 13:16	37.68	37.69	0.01	37.68	37.69	0.01	0.25	removed sock replaced w/ new no NAPL present in bailer		
MPE-5	13:18 13:56	36.38	40.06	3.68	38.67	38.85	0.18	1.5	removed sock, replaced w/ new - 1.025 L NAPL recovered		
MW MPE-9R	13:54 14:36	-	36.48	0	-	40.59	0	-	NAPL ND by probe sock removed, replaced w/ visible when new on bailer when removed		
Purged NAPL and Water Storage, Transport, and Disposal Information:											
NAPL & water disposed of on site in designated barrel											



Environment Testing

- 1
- 2
- 3
- 4
- 5
- 6
- 7
- 8
- 9
- 10
- 11

ANALYTICAL REPORT

PREPARED FOR

Attn: Angela Todd
Animas Environmental Services
624 E. Comanche Street
Farmington, New Mexico 87401

Generated 1/2/2025 9:13:42 AM

JOB DESCRIPTION

BMG 2008 Q4 Sampling
Hwy. 537, Rio Arriba County, New Mexico

JOB NUMBER

885-16524-1

Eurofins Albuquerque
4901 Hawkins NE
Albuquerque NM 87109



Eurofins Albuquerque

Job Notes

The test results in this report relate only to the samples as received by the laboratory and will meet all requirements of the methodology, with any exceptions noted. This report shall not be reproduced except in full, without the express written approval of the laboratory. All questions should be directed to the Eurofins Environment Testing South Central, LLC Project Manager.

Authorization



Generated
1/2/2025 9:13:42 AM

Authorized for release by
Cheyenne Cason, Project Manager
cheyenne.cason@et.eurofinsus.com
(505)345-3975

Client: Animas Environmental Services
Project/Site: BMG 2008 Q4 Sampling

Laboratory Job ID: 885-16524-1
SDG: Hwy. 537, Rio Arriba County, New Mexico

Table of Contents

Cover Page	1
Table of Contents	3
Definitions/Glossary	4
Case Narrative	5
Client Sample Results	6
QC Sample Results	10
QC Association Summary	15
Lab Chronicle	17
Certification Summary	18
Chain of Custody	20
Receipt Checklists	22



Definitions/Glossary

Client: Animas Environmental Services
Project/Site: BMG 2008 Q4 Sampling

Job ID: 885-16524-1
SDG: Hwy. 537, Rio Arriba County, New Mexico

Qualifiers

GC/MS VOA

Qualifier	Qualifier Description
J	Result is less than the RL but greater than or equal to the MDL and the concentration is an approximate value.

Metals

Qualifier	Qualifier Description
J	Result is less than the RL but greater than or equal to the MDL and the concentration is an approximate value.

General Chemistry

Qualifier	Qualifier Description
F1	MS and/or MSD recovery exceeds control limits.
J	Result is less than the RL but greater than or equal to the MDL and the concentration is an approximate value.

Glossary

Abbreviation	These commonly used abbreviations may or may not be present in this report.
☼	Listed under the "D" column to designate that the result is reported on a dry weight basis
%R	Percent Recovery
CFL	Contains Free Liquid
CFU	Colony Forming Unit
CNF	Contains No Free Liquid
DER	Duplicate Error Ratio (normalized absolute difference)
Dil Fac	Dilution Factor
DL	Detection Limit (DoD/DOE)
DL, RA, RE, IN	Indicates a Dilution, Re-analysis, Re-extraction, or additional Initial metals/anion analysis of the sample
DLC	Decision Level Concentration (Radiochemistry)
EDL	Estimated Detection Limit (Dioxin)
LOD	Limit of Detection (DoD/DOE)
LOQ	Limit of Quantitation (DoD/DOE)
MCL	EPA recommended "Maximum Contaminant Level"
MDA	Minimum Detectable Activity (Radiochemistry)
MDC	Minimum Detectable Concentration (Radiochemistry)
MDL	Method Detection Limit
ML	Minimum Level (Dioxin)
MPN	Most Probable Number
MQL	Method Quantitation Limit
NC	Not Calculated
ND	Not Detected at the reporting limit (or MDL or EDL if shown)
NEG	Negative / Absent
POS	Positive / Present
PQL	Practical Quantitation Limit
PRES	Presumptive
QC	Quality Control
RER	Relative Error Ratio (Radiochemistry)
RL	Reporting Limit or Requested Limit (Radiochemistry)
RPD	Relative Percent Difference, a measure of the relative difference between two points
TEF	Toxicity Equivalent Factor (Dioxin)
TEQ	Toxicity Equivalent Quotient (Dioxin)
TNTC	Too Numerous To Count

Case Narrative

Client: Animas Environmental Services
Project: BMG 2008 Q4 Sampling

Job ID: 885-16524-1

Job ID: 885-16524-1

Eurofins Albuquerque

Job Narrative 885-16524-1

Analytical test results meet all requirements of the associated regulatory program listed on the Accreditation/Certification Summary Page unless otherwise noted under the individual analysis. Data qualifiers and/or narrative comments are included to explain any exceptions, if applicable.

- Matrix QC may not be reported if insufficient sample is provided or site-specific QC samples were not submitted. In these situations, to demonstrate precision and accuracy at a batch level, a LCS/LCSD may be performed, unless otherwise specified in the method.
- Surrogate and/or isotope dilution analyte recoveries (if applicable) which are outside of the QC window are confirmed unless attributed to a dilution or otherwise noted in the narrative.

Regulated compliance samples (e.g. SDWA, NPDES) must comply with the associated agency requirements/permits.

Receipt

The samples were received on 12/7/2024 6:15 AM. Unless otherwise noted below, the samples arrived in good condition, and, where required, properly preserved and on ice. The temperature of the cooler at receipt time was 0.2°C.

Receipt Exceptions

The container label for the following sample did not match the information listed on the Chain-of-Custody (COC): MW-9R (885-16524-1). The container labels list MW-9R, while the COC lists MW-R9. No client contact made.

GC/MS VOA

No additional analytical or quality issues were noted, other than those described above or in the Definitions/ Glossary page.

Gasoline Range Organics

No additional analytical or quality issues were noted, other than those described above or in the Definitions/ Glossary page.

Diesel Range Organics

No additional analytical or quality issues were noted, other than those described above or in the Definitions/ Glossary page.

Metals

No additional analytical or quality issues were noted, other than those described above or in the Definitions/ Glossary page.

General Chemistry

Method 420.4: The matrix spike / matrix spike duplicate (MS/MSD) recoveries for preparation batch 380-123715 and analytical batch 380-123721 were outside control limits for one or more analytes. See QC Sample Results for detail. Sample above range is suspected because the associated laboratory control sample (LCS) recovery is within acceptance limits.

No additional analytical or quality issues were noted, other than those described above or in the Definitions/ Glossary page.

Eurofins Albuquerque



Client Sample Results

Client: Animas Environmental Services
Project/Site: BMG 2008 Q4 Sampling

Job ID: 885-16524-1
SDG: Hwy. 537, Rio Arriba County, New Mexico

Client Sample ID: MW-9R

Lab Sample ID: 885-16524-1

Date Collected: 12/05/24 14:13

Matrix: Water

Date Received: 12/07/24 06:15

Method: SW846 8260B - Volatile Organic Compounds (GC/MS)

Analyte	Result	Qualifier	RL	MDL	Unit	D	Prepared	Analyzed	Dil Fac
1,1,1,2-Tetrachloroethane	<0.27		1.0	0.27	ug/L			12/12/24 01:06	1
1,1,1-Trichloroethane	<0.15		1.0	0.15	ug/L			12/12/24 01:06	1
1,1,2,2-Tetrachloroethane	<0.41		2.0	0.41	ug/L			12/12/24 01:06	1
1,1,2-Trichloroethane	<0.20		1.0	0.20	ug/L			12/12/24 01:06	1
1,1-Dichloroethane	<0.30		1.0	0.30	ug/L			12/12/24 01:06	1
1,1-Dichloroethene	<0.20		1.0	0.20	ug/L			12/12/24 01:06	1
1,1-Dichloropropene	<0.18		1.0	0.18	ug/L			12/12/24 01:06	1
1,2,3-Trichlorobenzene	<0.25		1.0	0.25	ug/L			12/12/24 01:06	1
1,2,3-Trichloropropane	<0.18		2.0	0.18	ug/L			12/12/24 01:06	1
1,2,4-Trichlorobenzene	<0.40		1.0	0.40	ug/L			12/12/24 01:06	1
1,2,4-Trimethylbenzene	<0.12		1.0	0.12	ug/L			12/12/24 01:06	1
1,2-Dibromo-3-Chloropropane	<0.74		2.0	0.74	ug/L			12/12/24 01:06	1
1,2-Dibromoethane (EDB)	<0.30		1.0	0.30	ug/L			12/12/24 01:06	1
1,2-Dichlorobenzene	<0.15		1.0	0.15	ug/L			12/12/24 01:06	1
1,2-Dichloroethane (EDC)	<0.30		1.0	0.30	ug/L			12/12/24 01:06	1
1,2-Dichloropropane	<0.20		1.0	0.20	ug/L			12/12/24 01:06	1
1,3,5-Trimethylbenzene	<0.18		1.0	0.18	ug/L			12/12/24 01:06	1
1,3-Dichlorobenzene	<0.16		1.0	0.16	ug/L			12/12/24 01:06	1
1,3-Dichloropropane	<0.18		1.0	0.18	ug/L			12/12/24 01:06	1
1,4-Dichlorobenzene	<0.11		1.0	0.11	ug/L			12/12/24 01:06	1
1-Methylnaphthalene	<2.0		4.0	2.0	ug/L			12/12/24 01:06	1
2,2-Dichloropropane	<0.26		2.0	0.26	ug/L			12/12/24 01:06	1
2-Butanone	<2.0		10	2.0	ug/L			12/12/24 01:06	1
2-Chlorotoluene	<0.14		1.0	0.14	ug/L			12/12/24 01:06	1
2-Hexanone	<1.8		10	1.8	ug/L			12/12/24 01:06	1
2-Methylnaphthalene	<2.0		4.0	2.0	ug/L			12/12/24 01:06	1
4-Chlorotoluene	<0.13		1.0	0.13	ug/L			12/12/24 01:06	1
4-Isopropyltoluene	0.63 J		1.0	0.20	ug/L			12/12/24 01:06	1
4-Methyl-2-pentanone	<1.5		10	1.5	ug/L			12/12/24 01:06	1
Acetone	<2.5		10	2.5	ug/L			12/12/24 01:06	1
Benzene	<0.23		1.0	0.23	ug/L			12/12/24 01:06	1
Bromobenzene	<0.28		1.0	0.28	ug/L			12/12/24 01:06	1
Bromodichloromethane	<0.20		1.0	0.20	ug/L			12/12/24 01:06	1
Dibromochloromethane	<0.28		1.0	0.28	ug/L			12/12/24 01:06	1
Bromoform	<0.31		1.0	0.31	ug/L			12/12/24 01:06	1
Bromomethane	<1.0		3.0	1.0	ug/L			12/12/24 01:06	1
Carbon disulfide	<1.0		10	1.0	ug/L			12/12/24 01:06	1
Carbon tetrachloride	<0.18		1.0	0.18	ug/L			12/12/24 01:06	1
Chlorobenzene	<0.46		1.0	0.46	ug/L			12/12/24 01:06	1
Chloroethane	<0.38		2.0	0.38	ug/L			12/12/24 01:06	1
Chloroform	<0.25		1.0	0.25	ug/L			12/12/24 01:06	1
Chloromethane	<0.41		3.0	0.41	ug/L			12/12/24 01:06	1
cis-1,2-Dichloroethene	<0.39		1.0	0.39	ug/L			12/12/24 01:06	1
cis-1,3-Dichloropropene	<0.13		1.0	0.13	ug/L			12/12/24 01:06	1
Dibromomethane	<0.31		1.0	0.31	ug/L			12/12/24 01:06	1
Dichlorodifluoromethane	<0.73		1.0	0.73	ug/L			12/12/24 01:06	1
Ethylbenzene	<0.21		1.0	0.21	ug/L			12/12/24 01:06	1
Hexachlorobutadiene	<0.42		1.0	0.42	ug/L			12/12/24 01:06	1
Isopropylbenzene	<0.18		1.0	0.18	ug/L			12/12/24 01:06	1

Eurofins Albuquerque

Client Sample Results

Client: Animas Environmental Services
 Project/Site: BMG 2008 Q4 Sampling

Job ID: 885-16524-1
 SDG: Hwy. 537, Rio Arriba County, New Mexico

Client Sample ID: MW-9R

Lab Sample ID: 885-16524-1

Date Collected: 12/05/24 14:13

Matrix: Water

Date Received: 12/07/24 06:15

Method: SW846 8260B - Volatile Organic Compounds (GC/MS) (Continued)

Analyte	Result	Qualifier	RL	MDL	Unit	D	Prepared	Analyzed	Dil Fac
Methyl-tert-butyl Ether (MTBE)	<0.39		1.0	0.39	ug/L			12/12/24 01:06	1
Methylene Chloride	<1.2		2.5	1.2	ug/L			12/12/24 01:06	1
n-Butylbenzene	<0.13		3.0	0.13	ug/L			12/12/24 01:06	1
N-Propylbenzene	<0.11		1.0	0.11	ug/L			12/12/24 01:06	1
Naphthalene	<0.24		2.0	0.24	ug/L			12/12/24 01:06	1
sec-Butylbenzene	0.20	J	1.0	0.14	ug/L			12/12/24 01:06	1
Styrene	<0.17		1.0	0.17	ug/L			12/12/24 01:06	1
tert-Butylbenzene	<0.24		1.0	0.24	ug/L			12/12/24 01:06	1
Tetrachloroethene (PCE)	<0.18		1.0	0.18	ug/L			12/12/24 01:06	1
Toluene	<0.25		1.0	0.25	ug/L			12/12/24 01:06	1
trans-1,2-Dichloroethene	<0.19		1.0	0.19	ug/L			12/12/24 01:06	1
trans-1,3-Dichloropropene	<0.34		1.0	0.34	ug/L			12/12/24 01:06	1
Trichloroethene (TCE)	<0.20		1.0	0.20	ug/L			12/12/24 01:06	1
Trichlorofluoromethane	<0.16		1.0	0.16	ug/L			12/12/24 01:06	1
Vinyl chloride	<0.32		1.0	0.32	ug/L			12/12/24 01:06	1
Xylenes, Total	<0.37		1.5	0.37	ug/L			12/12/24 01:06	1

Surrogate	%Recovery	Qualifier	Limits	Prepared	Analyzed	Dil Fac
1,2-Dichloroethane-d4 (Surr)	96		70 - 130		12/12/24 01:06	1
Toluene-d8 (Surr)	111		70 - 130		12/12/24 01:06	1
4-Bromofluorobenzene (Surr)	109		70 - 130		12/12/24 01:06	1
Dibromofluoromethane (Surr)	102		70 - 130		12/12/24 01:06	1

Method: SW846 8015M/D - Gasoline Range Organics (GRO) (GC)

Analyte	Result	Qualifier	RL	MDL	Unit	D	Prepared	Analyzed	Dil Fac
Gasoline Range Organics [C6 - C10]	0.054		0.050	0.013	mg/L			12/11/24 01:02	1

Surrogate	%Recovery	Qualifier	Limits	Prepared	Analyzed	Dil Fac
4-Bromofluorobenzene (Surr)	104		15 - 270		12/11/24 01:02	1

Method: SW846 8015M/D - Diesel Range Organics (DRO) (GC)

Analyte	Result	Qualifier	RL	MDL	Unit	D	Prepared	Analyzed	Dil Fac
Diesel Range Organics [C10-C28]	36		1.0	0.58	mg/L		12/12/24 10:42	12/19/24 05:19	1
Motor Oil Range Organics [C28-C40]	17		5.0	1.3	mg/L		12/12/24 10:42	12/19/24 05:19	1

Surrogate	%Recovery	Qualifier	Limits	Prepared	Analyzed	Dil Fac
Di-n-octyl phthalate (Surr)	94		46 - 159	12/12/24 10:42	12/19/24 05:19	1

Method: SW846 6010B - Metals (ICP) - Dissolved

Analyte	Result	Qualifier	RL	MDL	Unit	D	Prepared	Analyzed	Dil Fac
Iron	0.070		0.020	0.017	mg/L			12/09/24 12:04	1
Manganese	2.8		0.020	0.0032	mg/L			12/09/24 12:11	10

General Chemistry

Analyte	Result	Qualifier	RL	MDL	Unit	D	Prepared	Analyzed	Dil Fac
Total Dissolved Solids (SM 2540C)	1200		250	130	mg/L			12/12/24 18:01	1
Phenols, Total (EPA 420.4)	230	F1	50	25	ug/L		12/11/24 13:00	12/13/24 15:12	10

Eurofins Albuquerque

Client Sample Results

Client: Animas Environmental Services
Project/Site: BMG 2008 Q4 Sampling

Job ID: 885-16524-1
SDG: Hwy. 537, Rio Arriba County, New Mexico

Client Sample ID: Trip Blank

Lab Sample ID: 885-16524-2

Date Collected: 12/05/24 00:00

Matrix: Water

Date Received: 12/07/24 06:15

Method: SW846 8260B - Volatile Organic Compounds (GC/MS)

Analyte	Result	Qualifier	RL	MDL	Unit	D	Prepared	Analyzed	Dil Fac
1,1,1,2-Tetrachloroethane	<0.27		1.0	0.27	ug/L			12/12/24 01:33	1
1,1,1-Trichloroethane	<0.15		1.0	0.15	ug/L			12/12/24 01:33	1
1,1,2,2-Tetrachloroethane	<0.41		2.0	0.41	ug/L			12/12/24 01:33	1
1,1,2-Trichloroethane	<0.20		1.0	0.20	ug/L			12/12/24 01:33	1
1,1-Dichloroethane	<0.30		1.0	0.30	ug/L			12/12/24 01:33	1
1,1-Dichloroethene	<0.20		1.0	0.20	ug/L			12/12/24 01:33	1
1,1-Dichloropropene	<0.18		1.0	0.18	ug/L			12/12/24 01:33	1
1,2,3-Trichlorobenzene	<0.25		1.0	0.25	ug/L			12/12/24 01:33	1
1,2,3-Trichloropropane	<0.18		2.0	0.18	ug/L			12/12/24 01:33	1
1,2,4-Trichlorobenzene	<0.40		1.0	0.40	ug/L			12/12/24 01:33	1
1,2,4-Trimethylbenzene	<0.12		1.0	0.12	ug/L			12/12/24 01:33	1
1,2-Dibromo-3-Chloropropane	<0.74		2.0	0.74	ug/L			12/12/24 01:33	1
1,2-Dibromoethane (EDB)	<0.30		1.0	0.30	ug/L			12/12/24 01:33	1
1,2-Dichlorobenzene	<0.15		1.0	0.15	ug/L			12/12/24 01:33	1
1,2-Dichloroethane (EDC)	<0.30		1.0	0.30	ug/L			12/12/24 01:33	1
1,2-Dichloropropane	<0.20		1.0	0.20	ug/L			12/12/24 01:33	1
1,3,5-Trimethylbenzene	<0.18		1.0	0.18	ug/L			12/12/24 01:33	1
1,3-Dichlorobenzene	<0.16		1.0	0.16	ug/L			12/12/24 01:33	1
1,3-Dichloropropane	<0.18		1.0	0.18	ug/L			12/12/24 01:33	1
1,4-Dichlorobenzene	<0.11		1.0	0.11	ug/L			12/12/24 01:33	1
1-Methylnaphthalene	<2.0		4.0	2.0	ug/L			12/12/24 01:33	1
2,2-Dichloropropane	<0.26		2.0	0.26	ug/L			12/12/24 01:33	1
2-Butanone	<2.0		10	2.0	ug/L			12/12/24 01:33	1
2-Chlorotoluene	<0.14		1.0	0.14	ug/L			12/12/24 01:33	1
2-Hexanone	<1.8		10	1.8	ug/L			12/12/24 01:33	1
2-Methylnaphthalene	<2.0		4.0	2.0	ug/L			12/12/24 01:33	1
4-Chlorotoluene	<0.13		1.0	0.13	ug/L			12/12/24 01:33	1
4-Isopropyltoluene	<0.20		1.0	0.20	ug/L			12/12/24 01:33	1
4-Methyl-2-pentanone	<1.5		10	1.5	ug/L			12/12/24 01:33	1
Acetone	<2.5		10	2.5	ug/L			12/12/24 01:33	1
Benzene	<0.23		1.0	0.23	ug/L			12/12/24 01:33	1
Bromobenzene	<0.28		1.0	0.28	ug/L			12/12/24 01:33	1
Bromodichloromethane	<0.20		1.0	0.20	ug/L			12/12/24 01:33	1
Dibromochloromethane	<0.28		1.0	0.28	ug/L			12/12/24 01:33	1
Bromoform	<0.31		1.0	0.31	ug/L			12/12/24 01:33	1
Bromomethane	<1.0		3.0	1.0	ug/L			12/12/24 01:33	1
Carbon disulfide	<1.0		10	1.0	ug/L			12/12/24 01:33	1
Carbon tetrachloride	<0.18		1.0	0.18	ug/L			12/12/24 01:33	1
Chlorobenzene	<0.46		1.0	0.46	ug/L			12/12/24 01:33	1
Chloroethane	<0.38		2.0	0.38	ug/L			12/12/24 01:33	1
Chloroform	<0.25		1.0	0.25	ug/L			12/12/24 01:33	1
Chloromethane	<0.41		3.0	0.41	ug/L			12/12/24 01:33	1
cis-1,2-Dichloroethene	<0.39		1.0	0.39	ug/L			12/12/24 01:33	1
cis-1,3-Dichloropropene	<0.13		1.0	0.13	ug/L			12/12/24 01:33	1
Dibromomethane	<0.31		1.0	0.31	ug/L			12/12/24 01:33	1
Dichlorodifluoromethane	<0.73		1.0	0.73	ug/L			12/12/24 01:33	1
Ethylbenzene	<0.21		1.0	0.21	ug/L			12/12/24 01:33	1
Hexachlorobutadiene	<0.42		1.0	0.42	ug/L			12/12/24 01:33	1
Isopropylbenzene	<0.18		1.0	0.18	ug/L			12/12/24 01:33	1

Eurofins Albuquerque

Client Sample Results

Client: Animas Environmental Services
 Project/Site: BMG 2008 Q4 Sampling

Job ID: 885-16524-1
 SDG: Hwy. 537, Rio Arriba County, New Mexico

Client Sample ID: Trip Blank

Lab Sample ID: 885-16524-2

Date Collected: 12/05/24 00:00

Matrix: Water

Date Received: 12/07/24 06:15

Method: SW846 8260B - Volatile Organic Compounds (GC/MS) (Continued)

Analyte	Result	Qualifier	RL	MDL	Unit	D	Prepared	Analyzed	Dil Fac
Methyl-tert-butyl Ether (MTBE)	<0.39		1.0	0.39	ug/L			12/12/24 01:33	1
Methylene Chloride	<1.2		2.5	1.2	ug/L			12/12/24 01:33	1
n-Butylbenzene	<0.13		3.0	0.13	ug/L			12/12/24 01:33	1
N-Propylbenzene	<0.11		1.0	0.11	ug/L			12/12/24 01:33	1
Naphthalene	<0.24		2.0	0.24	ug/L			12/12/24 01:33	1
sec-Butylbenzene	<0.14		1.0	0.14	ug/L			12/12/24 01:33	1
Styrene	<0.17		1.0	0.17	ug/L			12/12/24 01:33	1
tert-Butylbenzene	<0.24		1.0	0.24	ug/L			12/12/24 01:33	1
Tetrachloroethene (PCE)	<0.18		1.0	0.18	ug/L			12/12/24 01:33	1
Toluene	<0.25		1.0	0.25	ug/L			12/12/24 01:33	1
trans-1,2-Dichloroethene	<0.19		1.0	0.19	ug/L			12/12/24 01:33	1
trans-1,3-Dichloropropene	<0.34		1.0	0.34	ug/L			12/12/24 01:33	1
Trichloroethene (TCE)	<0.20		1.0	0.20	ug/L			12/12/24 01:33	1
Trichlorofluoromethane	<0.16		1.0	0.16	ug/L			12/12/24 01:33	1
Vinyl chloride	<0.32		1.0	0.32	ug/L			12/12/24 01:33	1
Xylenes, Total	<0.37		1.5	0.37	ug/L			12/12/24 01:33	1

Surrogate	%Recovery	Qualifier	Limits	Prepared	Analyzed	Dil Fac
1,2-Dichloroethane-d4 (Surr)	94		70 - 130		12/12/24 01:33	1
Toluene-d8 (Surr)	112		70 - 130		12/12/24 01:33	1
4-Bromofluorobenzene (Surr)	100		70 - 130		12/12/24 01:33	1
Dibromofluoromethane (Surr)	100		70 - 130		12/12/24 01:33	1

QC Sample Results

Client: Animas Environmental Services
Project/Site: BMG 2008 Q4 Sampling

Job ID: 885-16524-1
SDG: Hwy. 537, Rio Arriba County, New Mexico

Method: 8260B - Volatile Organic Compounds (GC/MS)

Lab Sample ID: MB 885-17571/4

Matrix: Water

Analysis Batch: 17571

Client Sample ID: Method Blank

Prep Type: Total/NA

Analyte	MB Result	MB Qualifier	RL	MDL	Unit	D	Prepared	Analyzed	Dil Fac
1,1,1,2-Tetrachloroethane	<0.27		1.0	0.27	ug/L			12/11/24 16:45	1
1,1,1-Trichloroethane	<0.15		1.0	0.15	ug/L			12/11/24 16:45	1
1,1,2,2-Tetrachloroethane	<0.41		2.0	0.41	ug/L			12/11/24 16:45	1
1,1,2-Trichloroethane	<0.20		1.0	0.20	ug/L			12/11/24 16:45	1
1,1-Dichloroethane	<0.30		1.0	0.30	ug/L			12/11/24 16:45	1
1,1-Dichloroethene	<0.20		1.0	0.20	ug/L			12/11/24 16:45	1
1,1-Dichloropropene	<0.18		1.0	0.18	ug/L			12/11/24 16:45	1
1,2,3-Trichlorobenzene	<0.25		1.0	0.25	ug/L			12/11/24 16:45	1
1,2,3-Trichloropropane	<0.18		2.0	0.18	ug/L			12/11/24 16:45	1
1,2,4-Trichlorobenzene	<0.40		1.0	0.40	ug/L			12/11/24 16:45	1
1,2,4-Trimethylbenzene	<0.12		1.0	0.12	ug/L			12/11/24 16:45	1
1,2-Dibromo-3-Chloropropane	<0.74		2.0	0.74	ug/L			12/11/24 16:45	1
1,2-Dibromoethane (EDB)	<0.30		1.0	0.30	ug/L			12/11/24 16:45	1
1,2-Dichlorobenzene	<0.15		1.0	0.15	ug/L			12/11/24 16:45	1
1,2-Dichloroethane (EDC)	<0.30		1.0	0.30	ug/L			12/11/24 16:45	1
1,2-Dichloropropane	<0.20		1.0	0.20	ug/L			12/11/24 16:45	1
1,3,5-Trimethylbenzene	<0.18		1.0	0.18	ug/L			12/11/24 16:45	1
1,3-Dichlorobenzene	<0.16		1.0	0.16	ug/L			12/11/24 16:45	1
1,3-Dichloropropane	<0.18		1.0	0.18	ug/L			12/11/24 16:45	1
1,4-Dichlorobenzene	<0.11		1.0	0.11	ug/L			12/11/24 16:45	1
1-Methylnaphthalene	<2.0		4.0	2.0	ug/L			12/11/24 16:45	1
2,2-Dichloropropane	<0.26		2.0	0.26	ug/L			12/11/24 16:45	1
2-Butanone	<2.0		10	2.0	ug/L			12/11/24 16:45	1
2-Chlorotoluene	<0.14		1.0	0.14	ug/L			12/11/24 16:45	1
2-Hexanone	<1.8		10	1.8	ug/L			12/11/24 16:45	1
2-Methylnaphthalene	<2.0		4.0	2.0	ug/L			12/11/24 16:45	1
4-Chlorotoluene	<0.13		1.0	0.13	ug/L			12/11/24 16:45	1
4-Isopropyltoluene	<0.20		1.0	0.20	ug/L			12/11/24 16:45	1
4-Methyl-2-pentanone	<1.5		10	1.5	ug/L			12/11/24 16:45	1
Acetone	<2.5		10	2.5	ug/L			12/11/24 16:45	1
Benzene	<0.23		1.0	0.23	ug/L			12/11/24 16:45	1
Bromobenzene	<0.28		1.0	0.28	ug/L			12/11/24 16:45	1
Bromodichloromethane	<0.20		1.0	0.20	ug/L			12/11/24 16:45	1
Dibromochloromethane	<0.28		1.0	0.28	ug/L			12/11/24 16:45	1
Bromoform	<0.31		1.0	0.31	ug/L			12/11/24 16:45	1
Bromomethane	<1.0		3.0	1.0	ug/L			12/11/24 16:45	1
Carbon disulfide	<1.0		10	1.0	ug/L			12/11/24 16:45	1
Carbon tetrachloride	<0.18		1.0	0.18	ug/L			12/11/24 16:45	1
Chlorobenzene	<0.46		1.0	0.46	ug/L			12/11/24 16:45	1
Chloroethane	<0.38		2.0	0.38	ug/L			12/11/24 16:45	1
Chloroform	<0.25		1.0	0.25	ug/L			12/11/24 16:45	1
Chloromethane	<0.41		3.0	0.41	ug/L			12/11/24 16:45	1
cis-1,2-Dichloroethene	<0.39		1.0	0.39	ug/L			12/11/24 16:45	1
cis-1,3-Dichloropropene	<0.13		1.0	0.13	ug/L			12/11/24 16:45	1
Dibromomethane	<0.31		1.0	0.31	ug/L			12/11/24 16:45	1
Dichlorodifluoromethane	<0.73		1.0	0.73	ug/L			12/11/24 16:45	1
Ethylbenzene	<0.21		1.0	0.21	ug/L			12/11/24 16:45	1
Hexachlorobutadiene	<0.42		1.0	0.42	ug/L			12/11/24 16:45	1

Eurofins Albuquerque

QC Sample Results

Client: Animas Environmental Services
 Project/Site: BMG 2008 Q4 Sampling

Job ID: 885-16524-1
 SDG: Hwy. 537, Rio Arriba County, New Mexico

Method: 8260B - Volatile Organic Compounds (GC/MS) (Continued)

Lab Sample ID: MB 885-17571/4
 Matrix: Water
 Analysis Batch: 17571

Client Sample ID: Method Blank
 Prep Type: Total/NA

Analyte	MB	MB	RL	MDL	Unit	D	Prepared	Analyzed	Dil Fac
	Result	Qualifier							
Isopropylbenzene	<0.18		1.0	0.18	ug/L			12/11/24 16:45	1
Methyl-tert-butyl Ether (MTBE)	<0.39		1.0	0.39	ug/L			12/11/24 16:45	1
Methylene Chloride	<1.2		2.5	1.2	ug/L			12/11/24 16:45	1
n-Butylbenzene	<0.13		3.0	0.13	ug/L			12/11/24 16:45	1
N-Propylbenzene	<0.11		1.0	0.11	ug/L			12/11/24 16:45	1
Naphthalene	<0.24		2.0	0.24	ug/L			12/11/24 16:45	1
sec-Butylbenzene	<0.14		1.0	0.14	ug/L			12/11/24 16:45	1
Styrene	<0.17		1.0	0.17	ug/L			12/11/24 16:45	1
tert-Butylbenzene	<0.24		1.0	0.24	ug/L			12/11/24 16:45	1
Tetrachloroethene (PCE)	<0.18		1.0	0.18	ug/L			12/11/24 16:45	1
Toluene	<0.25		1.0	0.25	ug/L			12/11/24 16:45	1
trans-1,2-Dichloroethene	<0.19		1.0	0.19	ug/L			12/11/24 16:45	1
trans-1,3-Dichloropropene	<0.34		1.0	0.34	ug/L			12/11/24 16:45	1
Trichloroethene (TCE)	<0.20		1.0	0.20	ug/L			12/11/24 16:45	1
Trichlorofluoromethane	<0.16		1.0	0.16	ug/L			12/11/24 16:45	1
Vinyl chloride	<0.32		1.0	0.32	ug/L			12/11/24 16:45	1
Xylenes, Total	<0.37		1.5	0.37	ug/L			12/11/24 16:45	1

Surrogate	MB	MB	Limits	Prepared	Analyzed	Dil Fac
	%Recovery	Qualifier				
1,2-Dichloroethane-d4 (Surr)	97		70 - 130		12/11/24 16:45	1
Toluene-d8 (Surr)	109		70 - 130		12/11/24 16:45	1
4-Bromofluorobenzene (Surr)	99		70 - 130		12/11/24 16:45	1
Dibromofluoromethane (Surr)	100		70 - 130		12/11/24 16:45	1

Lab Sample ID: LCS 885-17571/3
 Matrix: Water
 Analysis Batch: 17571

Client Sample ID: Lab Control Sample
 Prep Type: Total/NA

Analyte	Spike Added	LCS Result	LCS Qualifier	Unit	D	%Rec	%Rec Limits
Benzene	20.1	20.2		ug/L		101	70 - 130
Chlorobenzene	20.1	20.9		ug/L		104	70 - 130
Toluene	20.2	20.9		ug/L		103	70 - 130
Trichloroethene (TCE)	20.2	18.5		ug/L		92	70 - 130

Surrogate	LCS	LCS	Limits
	%Recovery	Qualifier	
1,2-Dichloroethane-d4 (Surr)	98		70 - 130
Toluene-d8 (Surr)	107		70 - 130
4-Bromofluorobenzene (Surr)	100		70 - 130
Dibromofluoromethane (Surr)	101		70 - 130

QC Sample Results

Client: Animas Environmental Services
 Project/Site: BMG 2008 Q4 Sampling

Job ID: 885-16524-1
 SDG: Hwy. 537, Rio Arriba County, New Mexico

Method: 8015M/D - Gasoline Range Organics (GRO) (GC)

Lab Sample ID: MB 885-17449/20
 Matrix: Water
 Analysis Batch: 17449

Client Sample ID: Method Blank
 Prep Type: Total/NA

Analyte	MB Result	MB Qualifier	RL	MDL	Unit	D	Prepared	Analyzed	Dil Fac
Gasoline Range Organics [C6 - C10]	<0.013		0.050	0.013	mg/L			12/10/24 17:40	1
Surrogate	MB %Recovery	MB Qualifier	Limits				Prepared	Analyzed	Dil Fac
4-Bromofluorobenzene (Surr)	98		15 - 270					12/10/24 17:40	1

Lab Sample ID: LCS 885-17449/18
 Matrix: Water
 Analysis Batch: 17449

Client Sample ID: Lab Control Sample
 Prep Type: Total/NA

Analyte	Spike Added	LCS Result	LCS Qualifier	Unit	D	%Rec	%Rec Limits
Gasoline Range Organics [C6 - C10]	0.500	0.455		mg/L		91	70 - 130
Surrogate	LCS %Recovery	LCS Qualifier	Limits				
4-Bromofluorobenzene (Surr)	200		15 - 270				

Method: 6010B - Metals (ICP)

Lab Sample ID: MB 885-17334/16
 Matrix: Water
 Analysis Batch: 17334

Client Sample ID: Method Blank
 Prep Type: Total/NA

Analyte	MB Result	MB Qualifier	RL	MDL	Unit	D	Prepared	Analyzed	Dil Fac
Iron	<0.017		0.020	0.017	mg/L			12/09/24 11:51	1
Manganese	<0.00032		0.0020	0.00032	mg/L			12/09/24 11:51	1

Lab Sample ID: LCS 885-17334/18
 Matrix: Water
 Analysis Batch: 17334

Client Sample ID: Lab Control Sample
 Prep Type: Total/NA

Analyte	Spike Added	LCS Result	LCS Qualifier	Unit	D	%Rec	%Rec Limits
Iron	0.500	0.531		mg/L		106	80 - 120
Manganese	0.500	0.522		mg/L		104	80 - 120

Lab Sample ID: MRL 885-17334/13
 Matrix: Water
 Analysis Batch: 17334

Client Sample ID: Lab Control Sample
 Prep Type: Total/NA

Analyte	Spike Added	MRL Result	MRL Qualifier	Unit	D	%Rec	%Rec Limits
Iron	0.0200	<0.026		mg/L		84	50 - 150
Manganese	0.00200	0.00206	J	mg/L		103	50 - 150

Lab Sample ID: 885-16524-1 MS
 Matrix: Water
 Analysis Batch: 17334

Client Sample ID: MW-9R
 Prep Type: Dissolved

Analyte	Sample Result	Sample Qualifier	Spike Added	MS Result	MS Qualifier	Unit	D	%Rec	%Rec Limits
Iron	0.070		0.500	0.590		mg/L		104	75 - 125

Eurofins Albuquerque

QC Sample Results

Client: Animas Environmental Services
 Project/Site: BMG 2008 Q4 Sampling

Job ID: 885-16524-1
 SDG: Hwy. 537, Rio Arriba County, New Mexico

Method: 6010B - Metals (ICP) (Continued)

Lab Sample ID: 885-16524-1 MSD
 Matrix: Water
 Analysis Batch: 17334

Client Sample ID: MW-9R
 Prep Type: Dissolved

Analyte	Sample Result	Sample Qualifier	Spike Added	MSD Result	MSD Qualifier	Unit	D	%Rec	%Rec Limits	RPD	RPD Limit
Iron	0.070		0.500	0.579		mg/L		102	75 - 125	2	20

Method: 2540C - Solids, Total Dissolved (TDS)

Lab Sample ID: MB 885-17683/1
 Matrix: Water
 Analysis Batch: 17683

Client Sample ID: Method Blank
 Prep Type: Total/NA

Analyte	MB Result	MB Qualifier	RL	MDL	Unit	D	Prepared	Analyzed	Dil Fac
Total Dissolved Solids	<25		50	25	mg/L			12/12/24 18:01	1

Lab Sample ID: LCS 885-17683/2
 Matrix: Water
 Analysis Batch: 17683

Client Sample ID: Lab Control Sample
 Prep Type: Total/NA

Analyte	Spike Added	LCS Result	LCS Qualifier	Unit	D	%Rec	%Rec Limits
Total Dissolved Solids	1000	1040		mg/L		104	80 - 120

Method: 420.4 - Phenolics, Total Recoverable

Lab Sample ID: MB 380-123715/1-A
 Matrix: Water
 Analysis Batch: 123721

Client Sample ID: Method Blank
 Prep Type: Total/NA
 Prep Batch: 123715

Analyte	MB Result	MB Qualifier	RL	MDL	Unit	D	Prepared	Analyzed	Dil Fac
Phenols, Total	<2.5		5.0	2.5	ug/L		12/11/24 13:00	12/13/24 15:01	1

Lab Sample ID: LCS 380-123715/3-A
 Matrix: Water
 Analysis Batch: 123721

Client Sample ID: Lab Control Sample
 Prep Type: Total/NA
 Prep Batch: 123715

Analyte	Spike Added	LCS Result	LCS Qualifier	Unit	D	%Rec	%Rec Limits
Phenols, Total	80.0	77.3		ug/L		97	90 - 110

Lab Sample ID: LCSD 380-123715/4-A
 Matrix: Water
 Analysis Batch: 123721

Client Sample ID: Lab Control Sample Dup
 Prep Type: Total/NA
 Prep Batch: 123715

Analyte	Spike Added	LCSD Result	LCSD Qualifier	Unit	D	%Rec	%Rec Limits	RPD	RPD Limit
Phenols, Total	80.0	78.0		ug/L		97	90 - 110	1	20

Lab Sample ID: MRL 380-123715/2-A
 Matrix: Water
 Analysis Batch: 123721

Client Sample ID: Lab Control Sample
 Prep Type: Total/NA
 Prep Batch: 123715

Analyte	Spike Added	MRL Result	MRL Qualifier	Unit	D	%Rec	%Rec Limits
Phenols, Total	5.00	4.12	J	ug/L		82	50 - 150

Eurofins Albuquerque

QC Sample Results

Client: Animas Environmental Services
 Project/Site: BMG 2008 Q4 Sampling

Job ID: 885-16524-1
 SDG: Hwy. 537, Rio Arriba County, New Mexico

Method: 420.4 - Phenolics, Total Recoverable (Continued)

Lab Sample ID: 885-16524-1 MS
Matrix: Water
Analysis Batch: 123721

Client Sample ID: MW-9R
Prep Type: Total/NA
Prep Batch: 123715

Analyte	Sample Result	Sample Qualifier	Spike Added	MS Result	MS Qualifier	Unit	D	%Rec	%Rec Limits
Phenols, Total	230	F1	80.0	193	F1	ug/L		-44	90 - 110

Lab Sample ID: 885-16524-1 MSD
Matrix: Water
Analysis Batch: 123721

Client Sample ID: MW-9R
Prep Type: Total/NA
Prep Batch: 123715

Analyte	Sample Result	Sample Qualifier	Spike Added	MSD Result	MSD Qualifier	Unit	D	%Rec	%Rec Limits	RPD	RPD Limit
Phenols, Total	230	F1	80.0	198	F1	ug/L		-38	90 - 110	2	20

- 1
- 2
- 3
- 4
- 5
- 6
- 7
- 8
- 9
- 10
- 11

QC Association Summary

Client: Animas Environmental Services
Project/Site: BMG 2008 Q4 Sampling

Job ID: 885-16524-1
SDG: Hwy. 537, Rio Arriba County, New Mexico

GC/MS VOA

Analysis Batch: 17571

Lab Sample ID	Client Sample ID	Prep Type	Matrix	Method	Prep Batch
885-16524-1	MW-9R	Total/NA	Water	8260B	
885-16524-2	Trip Blank	Total/NA	Water	8260B	
MB 885-17571/4	Method Blank	Total/NA	Water	8260B	
LCS 885-17571/3	Lab Control Sample	Total/NA	Water	8260B	

GC VOA

Analysis Batch: 17449

Lab Sample ID	Client Sample ID	Prep Type	Matrix	Method	Prep Batch
885-16524-1	MW-9R	Total/NA	Water	8015M/D	
MB 885-17449/20	Method Blank	Total/NA	Water	8015M/D	
LCS 885-17449/18	Lab Control Sample	Total/NA	Water	8015M/D	

GC Semi VOA

Prep Batch: 17611

Lab Sample ID	Client Sample ID	Prep Type	Matrix	Method	Prep Batch
885-16524-1	MW-9R	Total/NA	Water	3511	

Analysis Batch: 18021

Lab Sample ID	Client Sample ID	Prep Type	Matrix	Method	Prep Batch
885-16524-1	MW-9R	Total/NA	Water	8015M/D	17611

Metals

Analysis Batch: 17334

Lab Sample ID	Client Sample ID	Prep Type	Matrix	Method	Prep Batch
885-16524-1	MW-9R	Dissolved	Water	6010B	
885-16524-1	MW-9R	Dissolved	Water	6010B	
MB 885-17334/16	Method Blank	Total/NA	Water	6010B	
LCS 885-17334/18	Lab Control Sample	Total/NA	Water	6010B	
MRL 885-17334/13	Lab Control Sample	Total/NA	Water	6010B	
885-16524-1 MS	MW-9R	Dissolved	Water	6010B	
885-16524-1 MSD	MW-9R	Dissolved	Water	6010B	

General Chemistry

Analysis Batch: 17683

Lab Sample ID	Client Sample ID	Prep Type	Matrix	Method	Prep Batch
885-16524-1	MW-9R	Total/NA	Water	2540C	
MB 885-17683/1	Method Blank	Total/NA	Water	2540C	
LCS 885-17683/2	Lab Control Sample	Total/NA	Water	2540C	

Prep Batch: 123715

Lab Sample ID	Client Sample ID	Prep Type	Matrix	Method	Prep Batch
885-16524-1	MW-9R	Total/NA	Water	420.1 Distillat	
MB 380-123715/1-A	Method Blank	Total/NA	Water	420.1 Distillat	
LCS 380-123715/3-A	Lab Control Sample	Total/NA	Water	420.1 Distillat	
LCSD 380-123715/4-A	Lab Control Sample Dup	Total/NA	Water	420.1 Distillat	
MRL 380-123715/2-A	Lab Control Sample	Total/NA	Water	420.1 Distillat	
885-16524-1 MS	MW-9R	Total/NA	Water	420.1 Distillat	
885-16524-1 MSD	MW-9R	Total/NA	Water	420.1 Distillat	

Eurofins Albuquerque

QC Association Summary

Client: Animas Environmental Services
Project/Site: BMG 2008 Q4 Sampling

Job ID: 885-16524-1
SDG: Hwy. 537, Rio Arriba County, New Mexico

General Chemistry

Analysis Batch: 123721

Lab Sample ID	Client Sample ID	Prep Type	Matrix	Method	Prep Batch
885-16524-1	MW-9R	Total/NA	Water	420.4	123715
MB 380-123715/1-A	Method Blank	Total/NA	Water	420.4	123715
LCS 380-123715/3-A	Lab Control Sample	Total/NA	Water	420.4	123715
LCSD 380-123715/4-A	Lab Control Sample Dup	Total/NA	Water	420.4	123715
MRL 380-123715/2-A	Lab Control Sample	Total/NA	Water	420.4	123715
885-16524-1 MS	MW-9R	Total/NA	Water	420.4	123715
885-16524-1 MSD	MW-9R	Total/NA	Water	420.4	123715

- 1
- 2
- 3
- 4
- 5
- 6
- 7
- 8
- 9
- 10
- 11

Lab Chronicle

Client: Animas Environmental Services
 Project/Site: BMG 2008 Q4 Sampling

Job ID: 885-16524-1
 SDG: Hwy. 537, Rio Arriba County, New Mexico

Client Sample ID: MW-9R
Date Collected: 12/05/24 14:13
Date Received: 12/07/24 06:15

Lab Sample ID: 885-16524-1
Matrix: Water

Prep Type	Batch Type	Batch Method	Run	Dilution Factor	Batch Number	Analyst	Lab	Prepared or Analyzed
Total/NA	Analysis	8260B		1	17571	RA	EET ALB	12/12/24 01:06
Total/NA	Analysis	8015M/D		1	17449	JP	EET ALB	12/11/24 01:02
Total/NA	Prep	3511			17611	EM	EET ALB	12/12/24 10:42
Total/NA	Analysis	8015M/D		1	18021	MI	EET ALB	12/19/24 05:19
Dissolved	Analysis	6010B		1	17334	VP	EET ALB	12/09/24 12:04
Dissolved	Analysis	6010B		10	17334	VP	EET ALB	12/09/24 12:11
Total/NA	Analysis	2540C		1	17683	KS	EET ALB	12/12/24 18:01
Total/NA	Prep	420.1 Distillat			123715	LQ3M	EA POM	12/11/24 13:00
Total/NA	Analysis	420.4		10	123721	LQ3M	EA POM	12/13/24 15:12

Client Sample ID: Trip Blank
Date Collected: 12/05/24 00:00
Date Received: 12/07/24 06:15

Lab Sample ID: 885-16524-2
Matrix: Water

Prep Type	Batch Type	Batch Method	Run	Dilution Factor	Batch Number	Analyst	Lab	Prepared or Analyzed
Total/NA	Analysis	8260B		1	17571	RA	EET ALB	12/12/24 01:33

Laboratory References:

EA POM = Eurofins Eaton Analytical Pomona, 941 Corporate Center Drive, Pomona, CA 91768-2642, TEL (626)386-1100
 EET ALB = Eurofins Albuquerque, 4901 Hawkins NE, Albuquerque, NM 87109, TEL (505)345-3975

Accreditation/Certification Summary

Client: Animas Environmental Services
Project/Site: BMG 2008 Q4 Sampling

Job ID: 885-16524-1
SDG: Hwy. 537, Rio Arriba County, New Mexico

Laboratory: Eurofins Albuquerque

The accreditations/certifications listed below are applicable to this report.

Authority	Program	Identification Number	Expiration Date
Oregon	NELAP	NM100001	02-25-25

Laboratory: Eurofins Eaton Analytical Pomona

All accreditations/certifications held by this laboratory are listed. Not all accreditations/certifications are applicable to this report.

Authority	Program	Identification Number	Expiration Date
A2LA	ISO/IEC 17025	5890.01 & 5890.02	06-30-25
Alabama	State	41060	01-31-25
Arizona	State	AZ0833	02-27-25
Arkansas (DW)	State	CA00006	01-31-25
California	State	2813	06-18-25
Colorado	State	CA00006	01-31-25
Connecticut	State	PH-0107	03-31-26
Delaware (DW)	State	CA00006	01-31-25
Florida	NELAP	E871024	06-30-25
Georgia (DW)	State	947	01-31-25
Guam	State	24-03R	03-31-25
Hawaii	State	CA00006	01-31-25
Hawaii (Micro)	State	CA00006	01-31-25
Idaho (DW)	State	CA00006	01-31-25
Idaho (Micro)	State	CA00006	03-31-25
Illinois	NELAP	200033	03-31-25
Indiana	State	C-CA-01	06-18-25
Kansas	NELAP	E-10268	04-30-25
Kentucky (DW)	State	KY90107	12-31-24
Louisiana (DW)	State	LA008	12-31-24
Maine	State	CA00006A	03-08-26
Maryland	State	224	03-31-25
Massachusetts	State	M-CA006	06-30-25
MI - RadChem Recognition	State	9906	06-18-25
Michigan	State	9906	06-18-25
Mississippi	State	CA2813	06-18-25
Montana (DW)	State	CERT0035	12-31-24
Nebraska	State	NE-OS-21-13	01-31-25
Nevada	State	CA00006	07-31-25
New Hampshire	NELAP	2959	03-29-25
New Jersey	NELAP	CA008	06-30-25
New Mexico	State	CA00006	01-31-25
New York	NELAP	11320	04-01-25
North Carolina (DW)	State	06701	07-31-25
North Dakota	State	R-009	01-31-24 *
Northern Mariana Islands (DW)	State	CA00006	01-31-25
Ohio	State	87786	01-31-25
Oregon	NELAP	4034	01-29-25
Pennsylvania	NELAP	68-00565	10-31-25
Puerto Rico	State	CA00006	03-31-25
Rhode Island	State	LAO00381	12-30-24
South Dakota (DW)	State	CA11320	06-18-25
Tennessee	State	TN02839	01-31-25
Texas	NELAP	T104704230	09-30-25

* Accreditation/Certification renewal pending - accreditation/certification considered valid.

Eurofins Albuquerque

Accreditation/Certification Summary

Client: Animas Environmental Services
Project/Site: BMG 2008 Q4 Sampling

Job ID: 885-16524-1
SDG: Hwy. 537, Rio Arriba County, New Mexico

Laboratory: Eurofins Eaton Analytical Pomona (Continued)

All accreditations/certifications held by this laboratory are listed. Not all accreditations/certifications are applicable to this report.

Authority	Program	Identification Number	Expiration Date
USEPA UCMR 5	US Federal Programs	CA00006	12-31-25
Utah	NELAP	CA00006	01-31-25
Vermont	State	VT-0114	12-27-24
Virginia	NELAP	460260	06-14-25
Washington	State	C838	03-13-25
Wyoming	State	8-TMS-L	06-18-25

- 1
- 2
- 3
- 4
- 5
- 6
- 7
- 8
- 9
- 10
- 11

Chain of Custody Record



885-16524 COC

Client Information		Sampler: Jason Oyebi & Jessica Liesse		Lab PM: Cheyenne Cason	Carrier Tracking No(s): N/A	COC No: 885-16524 COC															
Client Contact: Angela Todd		Phone: 720-537-6650		E-Mail: Cheyenne.Cason@et.eurofins.com	State of Origin: New Mexico	Page: 1 of 1															
Company: Animas Environmental Services, LLC - PLEASE BILL DIRECTLY TO BMG		PWSID: N/A		Job #: _____																	
Due Date Requested: Standard TAT TAT Requested (days): Standard TAT Compliance Project: <input type="checkbox"/> Yes <input checked="" type="checkbox"/> No PO #: N/A WO #: N/A Project #: 080101 SSOW#: N/A Site: Hwy. 537, Rio Arriba County, New Mexico																					
Sample Identification	Sample Date	Sample Time	Sample Type (C=comp, G=grab)	Matrix (W=water, S=solid, O=other, AT=air)	Preservation Code:	Field Filtered Sample (Yes or No)		Perform MS/MSD (Yes or No)		VOCs per USEPA Method 8260		TPH GRO/DRO/MRO per USEPA Method 8015		Dissolved Iron & manganese per USEPA 200.8/6020		Total Dissolved Solids per SM2540C		Phenols per SW846 9067		Total Number of containers	Special Instructions/Note:
						Y	N	Y	N	A	I	D	I	I	S	1	1	1	1		
MW-9R	12-05-24	1413	G	W		Y	N	Y	N	3	1	1	1	1	1	1	1	7			3x40-mL VOA w/HCl, 1-L amber no pres, 125-mL poly w/HNO ₃ filtered, 125-mL poly, 1-L amber w/H ₂ SO ₄
Trip Blank			G	W		N	N			2								2			2x40-mL VOA w/HCl
Possible Hazard Identification Non-Hazard <input type="checkbox"/> Flammable <input type="checkbox"/> Skin Irritant <input type="checkbox"/> Poison B <input type="checkbox"/> Unknown <input type="checkbox"/> Radiological <input type="checkbox"/>																					
Deliverable Requested: I, II, III, IV, Other (specify) II Empty Kit Relinquished by: _____ Date: _____ Relinquished by: _____ Date/Time: 12/16/24 1524 Company: AES Relinquished by: _____ Date/Time: 12/16/24 1721 Company: Eurofins Relinquished by: _____ Date/Time: _____ Company: _____ Custody Seals Intact: <input type="checkbox"/> Yes <input type="checkbox"/> No Custody Seal No.: _____ Cooler Temperature(s) °C and Other Remarks: 0.3-0.1-0.2°C																					
Relinquished by: _____ Date/Time: 12/16/24 1524 Company: Eurofins Relinquished by: _____ Date/Time: 12/16/24 1524 Company: Eurofins Relinquished by: _____ Date/Time: 12/16/24 1524 Company: Eurofins Method of Shipment: courier Return To Client: _____ Disposal By Lab: _____ Archive For: _____ Months: _____ Special Instructions/OC Requirements: Please bill directly to Benson-Montin-Greer bmg@bmgdrilling.com																					

Ver: 01/16/2019

Eurofins Albuquerque
4901 Hawkins NE
Albuquerque, NM 87109
Phone: 505-345-3975 Fax: 505-345-4107

Chain of Custody Record



Environment Testing

Client Information (Sub Contract Lab)		Sampler: N/A	Lab PM: Cason, Chyenne	Carrier Tracking No(s): N/A	COC No: 885-3080 1
Client Contact: N/A		Phone: N/A	E-Mail: cheyenne.cason@eurofins.com	State of Origin: New Mexico	Page: Page 1 of 1
Shipping/Receiving Company: Eurofins Eaton Analytical		Accreditations Required (See note): NELAP - Oregon			
Address: 941 Corporate Center Drive, Pomona		Due Date Requested: 12/16/2024			
City: Pomona		TAT Requested (days): N/A			
State, Zip: CA, 91768-2642		RO #: N/A			
Phone: 626-386-1100(Tel)		WO #: N/A			
Email: N/A		Project #: 88500196			
Project Name: BMG 2008 Q4 Sampling		SSOW#: N/A			
Site: N/A		Site: N/A			
Sample Identification - Client ID (Lab ID)		Sample Date: 12/15/24	Sample Time: 14:13 Mountain	Sample Type (C=Comp, G=grab): G	Matrix (W=water, S=solid, O=wastool, BT=tissue, A=air): Water
MW-9R (885-16524-1)		Preservation Code: G			
		Field Filtered Sample (Yes or No): X			
		Perform MS/MSD (Yes or No): X			
		420.4/Distill Phenol: X			
		Total Number of Containers: 1			
		Special Instructions/Note:			
		Other: N/A			
		Preservation Codes:			
		Analysis Requested			
		Special Instructions/Note:			

Note: Since laboratory accreditations are subject to change, Eurofins Environment Testing South Central, LLC places the ownership of method, analyte & accreditation compliance upon our subcontract laboratories. This sample shipment is forwarded under chain-of-custody if the laboratory does not currently maintain accreditation in the State of Origin listed above for analysis/test/matrix being analyzed, the samples must be shipped back to the Eurofins Environment Testing South Central, LLC laboratory or other instructions will be provided. Any changes to accreditation status should be brought to Eurofins Environment Testing South Central, LLC attention immediately. If all requested accreditations are current to date, return the signed Chain of Custody attesting to said compliance to Eurofins Environment Testing South Central, LLC.

Possible Hazard Identification
 Unconfirmed
 Return To Client
 Disposal By Lab
 Archive For _____ Months
 Deliverable Requested: I, II, III, IV, Other (specify): Primary Deliverable Rank: 2
 Empty Kit Relinquished by: _____ Date: 12/19/24
 Relinquished by: _____ Date/Time: 12/19/24 14:25 Company: _____
 Relinquished by: _____ Date/Time: _____ Company: _____
 Relinquished by: _____ Date/Time: _____ Company: _____
 Custody Seals Intact: _____
 Custody Seal No.: _____
 Cooler Temperature(s) °C and Other Remarks: 6/8/26 22-4
 Ver: 10/10/2024



Login Sample Receipt Checklist

Client: Animas Environmental Services

Job Number: 885-16524-1

SDG Number: Hwy. 537, Rio Arriba County, New Mexico

Login Number: 16524

List Source: Eurofins Albuquerque

List Number: 1

Creator: Casarrubias, Tracy

Question	Answer	Comment
The cooler's custody seal, if present, is intact.	True	
Sample custody seals, if present, are intact.	True	
The cooler or samples do not appear to have been compromised or tampered with.	True	
Samples were received on ice.	True	
Cooler Temperature is acceptable.	True	
Cooler Temperature is recorded.	True	
COC is present.	True	
COC is filled out in ink and legible.	True	
COC is filled out with all pertinent information.	True	
Is the Field Sampler's name present on COC?	True	
There are no discrepancies between the containers received and the COC.	True	
Samples are received within Holding Time (excluding tests with immediate HTs)	True	
Sample containers have legible labels.	True	
Containers are not broken or leaking.	True	
Sample collection date/times are provided.	True	
Appropriate sample containers are used.	True	
Sample bottles are completely filled.	True	
Sample Preservation Verified.	True	
There is sufficient vol. for all requested analyses, incl. any requested MS/MSDs	True	
Containers requiring zero headspace have no headspace or bubble is <6mm (1/4").	True	



Login Sample Receipt Checklist

Client: Animas Environmental Services

Job Number: 885-16524-1

SDG Number: Hwy. 537, Rio Arriba County, New Mexico

Login Number: 16524

List Source: Eurofins Eaton Analytical Pomona

List Number: 2

List Creation: 12/10/24 01:53 PM

Creator: Segura, Ryan

Question	Answer	Comment
The cooler's custody seal, if present, is intact.	N/A	
Sample custody seals, if present, are intact.	N/A	
Samples were received on ice.	True	
Cooler Temperature is acceptable.	True	
Cooler Temperature is recorded.	True	
COC is present.	True	
COC is filled out in ink and legible.	True	
COC is filled out with all pertinent information.	True	
There are no discrepancies between the containers received and the COC.	True	
Samples are received within Holding Time (excluding tests with immediate HTs)	True	
Sample containers have legible labels.	True	
Containers are not broken or leaking.	True	
Sample collection date/times are provided.	True	
There is sufficient vol. for all requested analyses, incl. any requested MS/MSDs	True	
Containers requiring zero headspace have no headspace or bubble is <6mm (1/4").	True	
Samples do not require splitting or compositing.	True	
Container provided by EEA	True	



Sante Fe Main Office
Phone: (505) 476-3441

General Information
Phone: (505) 629-6116

Online Phone Directory
<https://www.emnrd.nm.gov/oecd/contact-us>

State of New Mexico
Energy, Minerals and Natural Resources
Oil Conservation Division
1220 S. St Francis Dr.
Santa Fe, NM 87505

CONDITIONS

Action 445411

CONDITIONS

Operator: BENSON-MONTIN-GREER DRILLING CORP 4900 College Blvd. Farmington, NM 87402	OGRID: 2096
	Action Number: 445411
	Action Type: [UF-GWA] Ground Water Abatement (GROUND WATER ABATEMENT)

CONDITIONS

Created By	Condition	Condition Date
amaxwell	Report accepted for record.	6/4/2026
amaxwell	If a separate report has not been submitted for injection, please follow up with Phillip Goetze at phillip.goetze@emnrd.nm.gov for assistance. If OCD UIC approves injection, please attach approval documentation and submit a standalone report.	6/4/2026