



May 22, 2026

Shelly Wells, Environmental Specialist - A
New Mexico Energy, Minerals, and Natural Resources Department
1220 South St. Francis Drive
Santa Fe, New Mexico 87505

**Re: Closure Request Supplemental Information
Good Times P30 ROW Layflat Release
Incident Number nAPP2606239962
Application ID: 573976
San Juan County, New Mexico**

Dear Ms. Wells:

Ensolum, LLC (Ensolum), on behalf of Enduring Resources, LLC (Enduring), has prepared this **Closure Request Supplemental Information letter** for the above-mentioned Site. The request is based on prior work conducted and presented in a *Remediation Report and Closure Request* prepared by Ensolum and dated April 6, 2026. The *Remediation Report and Closure Request* is included in Attachment 1. The New Mexico Oil Conservation Division (NMOCD) denied the closure request in email communications dated May 1, 2026. The email communications requested the following information presented below in bold text:

- 1. Referring to Figure 2 why is the release extent and excavation extent not the same? According to Table 1, the entire area shown on Figure 2 was excavated. Explain or update Figure.**
- 2. On pg. 7 you write: "Ensolum personnel collected composite soil samples from locations SS01 through SS06 from the ground surface in an area measuring approximately 1,050 square feet, and samples SS07 through SS09 from the open MPLX pipeline trench at depths between the ground surface and approximately 7 feet bgs from an areas measuring approximately 176 square feet." Does that mean these were sidewall samples? Were samples collected from the base of the excavation?**
- 3. As SS01 through SS06 were above Closure Criteria (with 4,170 mg/kg chlorides at SS03), and no distinct sidewall samples were collected from the 1.5' excavation, more samples will be required to be collected around the entire excavation extent to confirm impacts have been removed laterally to below Table I Closure Criteria.**
- 4. Submit a complete and accurate closure report to OCD by June 30, 2026.**

To address these requests Ensolum has prepared this *letter* to address the NMOCD comments listed above.

SUPPLEMENTAL SITE INVESTIGATION AND REMEDIATION DATA

Item #1, Figure Clarification

To satisfy the first request from the NMOCD, Figure 2 has been redrafted to accurately convey that the entire release extent was excavated. As detailed in the attached report, excavation was conducted to an approximate maximum total depth of 1.5 feet below ground surface in the yellow shaded area with samples SS01 through SS06 and later resampled as SS10 through SS16. The blue shaded area, represented by samples SS07, SS08, and SS09, was an open trench prior to the release occurrence that was excavated to expose an MPLX pipeline. The released fluids subsequently migrated into the bottom of this open trench. Soil from this area was excavated using a hydro-vacuum (hydrovac) truck due to the existing utility at the bottom of the open trench. Minimal fluids migrated into the MPLX trench and minimal soil was removed via hydrovac from the area of 176 square feet before the three samples could be collected. The updated figure is attached as Figure 2.

Item #2, Sample Provenance and Source Location Clarification

Samples SS01 through SS06, and Samples SS10 through SS16 are composite floor samples, which include any potential sidewall material for this area as discussed below. Samples SS07, SS08, and SS09 were collected from the narrow trench as shown on Figure 2. The open trench was limited in width and represented a small area of impact (176 square feet). The three samples were collected to characterize this area following hydrovac excavation, as the narrow shape of the trench, sandstone bedrock floor, and presence of an active MPLX LP pipeline limited the effectiveness of traditional excavation equipment.

The samples represent both sidewall and floor of the excavation due to the limited size of the trench and limited depth of earth removed. Analytical results from SS07 through SS09, which represent the entirety of the MPLX LP pipeline trench, indicate no detections of TPH or BTEX with chloride concentrations compliant with NMOCD Table I Closure Criteria.

Item #3 Request for Sidewall Samples

To address the third request from the NMOCD regarding the lack of dedicated sidewall samples and any potential lateral migration of impacts in the shallow excavation SS01 through SS06 area, Ensolum presents the following analysis:

- For shallow sandy excavations such as occurred at this Site and documented in this and prior reports, the floor and sidewalls will rarely if ever meet at a 90-degree or near 90-degree angle. Instead, a shallow ramp forms at the edge of the excavation. In practice, there is no sidewall and sidewall samples functionally are no different than floor samples.
- For a shallow excavation of approximately 1 foot to 2 feet below grade in total depth, the lateral expression of the release is no longer present. At that (shallow) point in a soil release, sidewall samples do not represent a meaningful exposure pathway or remaining extent. The only remaining potential pathway is vertical migration, which is appropriately characterized with floor samples. This phenomenon is described as a diminishing lateral extent of impact. Collection of sidewall sample data is accomplished by collection of floor samples and this methodology ensures proper characterization and evaluation of possible lateral migration.
- For this location, with a measured perimeter of less than 140 feet, and a maximum depth of 1.5 feet, the square footage of the shallow sidewall if it existed would be no greater than 210 square feet. Dedicated sidewall samples would incorporate upwards of two cardinal directions and thus not provide reliable information on possible lateral migration of contaminants. Alternatively, incorporating the shallow sidewall into the floor samples and sampling protocol allows for accurate characterization of potential horizontal migration of impacts.

- The lateral extent of potential impacts and possible expression was not neglected, as SS10 through SS16 incorporated equivalent aliquots of soil from both the floor and any present shallow sidewalls. This is outlined in the original *Remediation Report and Closure Request*, “Confirmation composite samples were collected on March 18, 2026, from the shallow excavation extent and incorporated floor and shallow sidewall samples in the composite soil samples” (April 10, 2026). Including the floor area of approximately 1,113 square feet, the total surface area to be sampled (including both sidewalls and floor) is approximately 1,323 square feet. As indicated in Table 1, seven composite samples representing a maximum surface area of 200 square feet each were collected from the larger excavation. Therefore, we contend that this Site has been properly characterized and impacts shown to be removed to below Table I Closure Criteria.

An updated photographic log is included as Attachment 2. The photos were chosen to help illustrate the irregular situation presented by the MPLX LP pipeline trench as well as the lack of available sidewalls in the shallow portion of the excavation.

Based on the work conducted at this location and presented in these communications, Enduring requests Site Closure and No Further Action Status for Incident Number nAPP2606239962.

If you have any questions or comments, please contact Mr. Steve Kahn at (303) 913-1350 (skahn@ensolum.com) or Mr. Osgood Froelich at (303) 415-747-9186 (ofroelich@ensolum.com).

Sincerely,
Ensolum, LLC

Osgood Froelich
Staff Scientist

Steve Kahn
Senior Managing Engineer

cc: Bureau of Land Management

Attachments:

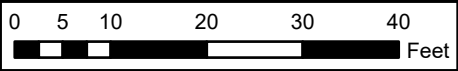
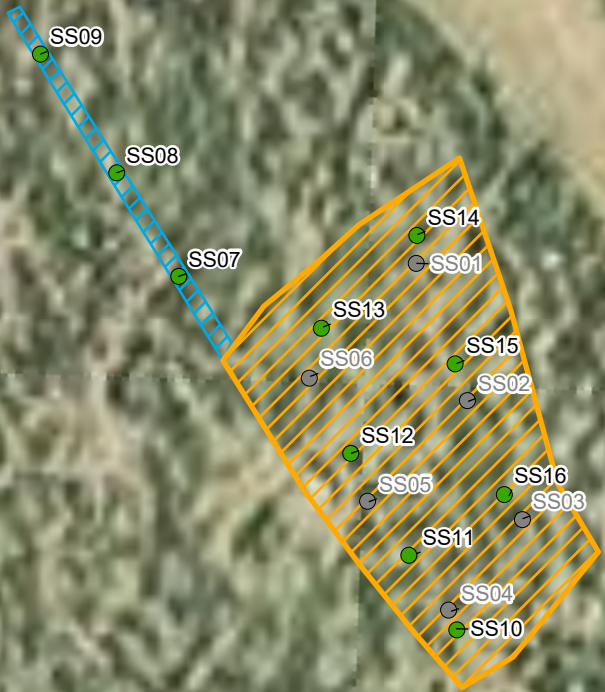
- | | |
|--------------|--|
| Figure 2 | Soil Samples Map |
| Table 1 | Soil Sample Analytical Results |
| Attachment 1 | Remediation Report and Closure Request (April 6, 2026) |
| Attachment 2 | Photographic Log |



FIGURE

Legend

- Final Soil Sample Location
- Soil Sample Areas Removed by Excavation
- Release Extent & Shallow Excavation Extent
- MPLX LP Trench Excavation Extent



Sources: Environmental Systems Research Institute (ESRI)



Soil Samples Map
 Good Times P30 ROW Layflat Release
 Enduring Resources, LLC
 Incident ID: nAPP2606239962
 36.274207, -107.825299
 San Juan County, New Mexico

FIGURE
2



TABLE



TABLE 1
SOIL SAMPLE ANALYTICAL RESULTS
GOOD TIMES P30 ROW LAYFLAT RELEASE
 Incident # nAPP2606239962
 Enduring Resources, LLC
 San Juan County, New Mexico

Sample Identification	Date	Depth (feet bgs)	Benzene (mg/kg)	Toluene (mg/kg)	Ethylbenzene (mg/kg)	Xylenes (mg/kg)	Total BTEX (mg/kg)	TPH GRO (mg/kg)	TPH DRO (mg/kg)	TPH MRO (mg/kg)	Total TPH (mg/kg)	Chloride (mg/kg)
NMOCD Closure Criteria for Soils Impacted by a Release			10	NE	NE	NE	50	NE	NE	NE	100	600
SS01	3/6/2026	Surface	<0.0250	<0.0250	<0.0250	0.0548	0.0548	<20.0	<25.0	<50.0	<50.0	3,330
SS02	3/6/2026	Surface	<0.0250	<0.0250	<0.0250	<0.0250	<0.0250	<20.0	33.7	<50.0	33.7	2,460
SS03	3/6/2026	Surface	<0.0250	<0.0250	<0.0250	<0.0250	<0.0250	<20.0	<25.0	<50.0	<50.0	4,170
SS04	3/6/2026	Surface	<0.0250	<0.0250	<0.0250	<0.0250	<0.0250	<20.0	<25.0	<50.0	<50.0	3,580
SS05	3/6/2026	Surface	<0.0250	<0.0250	<0.0250	<0.0250	<0.0250	<20.0	<25.0	<50.0	<50.0	1,820
SS06	3/6/2026	Surface	<0.0250	<0.0250	<0.0250	<0.0250	<0.0250	<20.0	<25.0	<50.0	<50.0	4,650
SS07	3/6/2026	0 - 7	<0.0250	<0.0250	<0.0250	<0.0250	<0.0250	<20.0	<25.0	<50.0	<50.0	332
SS08	3/6/2026	0 - 7	<0.0250	<0.0250	<0.0250	<0.0250	<0.0250	<20.0	<25.0	<50.0	<50.0	494
SS09	3/6/2026	0 - 7	<0.0250	<0.0250	<0.0250	<0.0250	<0.0250	<20.0	<25.0	<50.0	<50.0	33.7
SS10	3/18/2026	1.5	<0.0250	<0.0250	<0.0250	<0.0250	<0.0250	<20.0	<25.0	<50.0	<50.0	<20.0
SS11	3/18/2026	1.5	<0.0250	<0.0250	<0.0250	<0.0250	<0.0250	<20.0	<25.0	<50.0	<50.0	<20.0
SS12	3/18/2026	1.5	<0.0250	<0.0250	<0.0250	<0.0250	<0.0250	<20.0	<25.0	<50.0	<50.0	<20.0
SS13	3/18/2026	1.5	<0.0250	<0.0250	<0.0250	<0.0250	<0.0250	<20.0	<25.0	<50.0	<50.0	<20.0
SS14	3/18/2026	1.5	<0.0250	<0.0250	<0.0250	<0.0250	<0.0250	<20.0	<25.0	<50.0	<50.0	<20.0
SS15	3/18/2026	1.5	<0.0250	<0.0250	<0.0250	<0.0250	<0.0250	<20.0	<25.0	<50.0	<50.0	<20.0
SS16	3/18/2026	1.5	<0.0250	<0.0250	<0.0250	<0.0250	<0.0250	<20.0	<25.0	<50.0	<50.0	<20.0

Notes:

bgs: Below ground surface

BTEX: Benzene, Toluene, Ethylbenzene, and Xylenes

mg/kg: Milligrams per kilogram

NA: Not Analyzed

NE: Not Established

NMOCD: New Mexico Oil Conservation Division

PID: Photoionization detector

ppm: Parts per million

GRO: Gasoline Range Organics

DRO: Diesel Range Organics

MRO: Motor Oil/Lube Oil Range Organics

TPH: Total Petroleum Hydrocarbon

': Feet

<: Indicates result less than the stated laboratory reporting limit (RL)

Concentrations in **bold** and shaded exceed the New Mexico Oil Conservation Division Table I Closure Criteria for Soils Impacted by a Release

Grey and strikethrough text represents soil sample areas that have been excavated



ATTACHMENT 1

Remediation Report and Closure Request (April 6, 2026)

C-141 Final Narrative

nAPP2606239962
Good Times P30 Layflat ROW
San Juan County, NM
NMNM10674382
36.274151/-107.825249
UNIT A NENE SEC. 31, T24N, R9W
SURFACE OWNER: BLM

2/25/26

- Release located in laylat line due to a blind pump cap on the manifold leaking.

3/4/26

- Hydrovac bottom of ditch.

3/6/26

- Samples taken to evaluate the extent of release.

3/17/26

- Excavated contaminated soil.

3/18/26

- Closure samples completed.

3/23/26

- Backfilled the area.



Galaxy S25 Ultra



Galaxy S25 Ultra









April 6, 2026

New Mexico Oil Conservation Division

New Mexico Energy, Minerals, and Natural Resources Department
1220 South St. Francis Drive
Santa Fe, New Mexico 87505

Re: Remediation Report and Closure Request

Goodd Times P30 ROW Layflat Release
Enduring Resources, LLC
Incident Number nAPP2606239962
San Juan County, New Mexico

To Whom It May Concern:

Ensolum, LLC (Ensolum), on behalf of Enduring Resources, LLC (Enduring), has prepared the following *Remediation Report and Closure Request* summarizing remediation and sampling activities to address impacts to soil associated with the Good Times P30 ROW Layflat Release (Site, Figure 1). This report describes initial site assessment, excavation remediation, and confirmation soil sampling activities performed at the Site.

SITE DESCRIPTION AND RELEASE SUMMARY

The Site is located in Unit A, Section 31, Township 24N, Range 9W, in San Juan County, New Mexico (36.2741510, -107.825249) and is associated with oil and gas exploration and production operations on surface managed by the Bureau of Land Management (BLM). On February 25, 2026, Enduring personnel discovered a release of approximately 7 barrels (bbls) of produced water at the Site. A blind pump cap failed and resulted in a release from the layflat line. The liquid flowed along the ground surface and entered an existing open trench for an MPLX LP (MPLX) pipeline. Emergency response activities were initiated, including stopping the flow of liquids, isolating the leaking line, and hydrovacating saturated soil within the MPLX pipeline trench. Enduring reported the release to the New Mexico Oil Conservation Division (NMOCD) and BLM and the release was assigned NMOCD Incident Number nAPP2606239962.

SITE CHARACTERIZATION AND CLOSURE CRITERIA

As part of the Site investigation, nearby sensitive receptors were assessed in accordance with Title 19, Chapter 15, Part 29, Sections 11 and 12 (19.15.29.11 and 12) of the New Mexico Administrative Code (NMAC). This information is further discussed below.

POTENTIAL SENSITIVE RECEPTORS

Potential nearby receptors were assessed through desktop reviews of United States Geological Survey (USGS) topographic maps, Federal Emergency Management Administration (FEMA) Geographic Information System (GIS) maps, New Mexico Office of the State Engineer (NMOSE) database, aerial photographs, and Site-specific observations.

The nearest significant watercourse to the Site is an intermittent riverine located approximately 1,400 feet to the west of the release point. The nearest fresh water well is USGS well 361552107503801 located approximately 6,660 feet southwest of the Site with a recorded depth to water of 397 feet below ground surface (bgs). Due to the distance to the nearest water well, the estimated depth to groundwater at the release location is unknown and therefore assumed to be less than 50 feet bgs for this incident.

The Site is greater than 200 feet from any lakebed, sinkhole, or playa lake, and within 300 feet from any wetland. No wellhead protection areas, springs, or domestic/stock wells are located within a ½-mile from the Site. The Site is not within a 100-year floodplain, overlying a subsurface mine, or located within an area underlain by unstable geology. Schools, hospitals, institutions, churches, and/or other occupied permanent residence or structures are not located within 300 feet of the Site. A Site receptor map is shown on Figure 1.

SITE CLOSURE CRITERIA

Based on the information presented above and in accordance with the *Table I, Closure Criteria for Soils Impacted by a Release* (19.15.29.12 NMAC), the following Closure Criteria for constituents of concern (COCs) should be applied to the Site:

- Benzene: 10 milligrams per kilogram (mg/kg)
- Benzene, toluene, ethylbenzene, and total xylenes (BTEX): 50 mg/kg
- Total petroleum hydrocarbons (TPH): 100 mg/kg
- Chloride: 600 mg/kg.

SITE INVESTIGATION AND REMEDIATION ACTIVITIES

On March 6, 2026, Ensolum visited the Site to collect initial soil data to evaluate the Site conditions relative to Closure Criteria indicated above and map the extent of the release. The NMOCD was notified at least 2-business days prior to the sampling event with correspondence included as Attachment 1. Ensolum personnel collected composite soil samples from locations SS01 through SS06 from the ground surface in an area measuring approximately 1,050 square feet, and samples SS07 through SS09 from the open MPLX pipeline trench at depths between the ground surface and approximately 7 feet bgs from an areas measuring approximately 176 square feet.

Soil samples were placed directly into laboratory-provided glass jars, labeled with the location, date, time, sampler name, method of analysis, and immediately placed on ice. The soil samples were transported under strict chain-of-custody procedures to Envirotech analytical laboratory in Farmington, New Mexico, for analysis of the following COCs: BTEX following United States EPA Method 8021B; TPH following Environmental Protection Agency (EPA) Method 8015M/D; and chloride following EPA Method 300.0. Laboratory analytical results indicated that sampling areas SS01 through SS06 exhibited chloride concentrations exceeding the reclamation requirement, ranging from 1,820 mg/kg to 4,650 mg/kg. Composite samples collected from the MPLX pipeline trench (SS07 through SS09) were compliant with the Closure Criteria and reclamation requirement.

To address the elevated chloride concentrations detected on March 6, 2026 from areas SS01 through SS06, Enduring and Ensolum conducted soil excavation in March 2026 to remove the remaining impacted soil. Soil from the excavation was field screened for volatile organic compounds (VOCs) utilizing a calibrated photoionization detector (PID). Once field screening indicated that soil was compliant with applicable Closure Criteria, the NMOCD was notified at least 2-business days prior to conducting the final sampling activities (Attachment 1).

The final shallow excavation extent measured approximately 1,050 square feet and was advanced to a maximum depth of approximately 1.5 feet bgs. Confirmation composite samples were collected on March 18, 2026 from the shallow excavation extent and incorporated floor and shallow sidewall samples in the composite soil samples. The confirmation soil samples were collected in the manner described above and submitted to Envirotech for analysis of BTEX, TPH, and chloride.

Analytical results from the final excavation extent indicated all COCs were compliant with NMOCD Table I Closure Criteria and the reclamation requirement in all final confirmation soil samples collected at the Site. Laboratory analytical results are summarized in Table 1 and on Figure 2, with complete laboratory analytical reports included in Attachment 2. Photographs taken during Site activities are included in Attachment 3.

CONCLUSIONS AND CLOSURE REQUEST

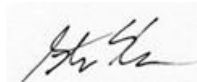
Corrective actions and soil sampling activities were conducted at the Site to address the release discovered on February 25, 2026. Laboratory analytical results from confirmation soil samples, collected from the final extents of the excavation, indicated all COC concentrations were compliant with the Site Closure Criteria, and no further remediation is required. The corrective action initiated by Enduring has mitigated impacts at this Site and these remedial actions have been protective of human health, the environment, and groundwater. With the analytical results and variance described above, Enduring respectfully requests closure for Incident Number nAPP2606239962.

If you have any questions or comments, please contact Mr. Stuart Hyde (shyde@ensolum.com) or Mr. Steve Kahn (skahn@ensolum.com).

Sincerely,
Ensolum, LLC



Stuart Hyde
Senior Managing Geologist



Steve Kahn
Senior Managing Engineer

cc: Tim Friesenhahn, Enduring Resources
Bureau of Land Management

Attachments:

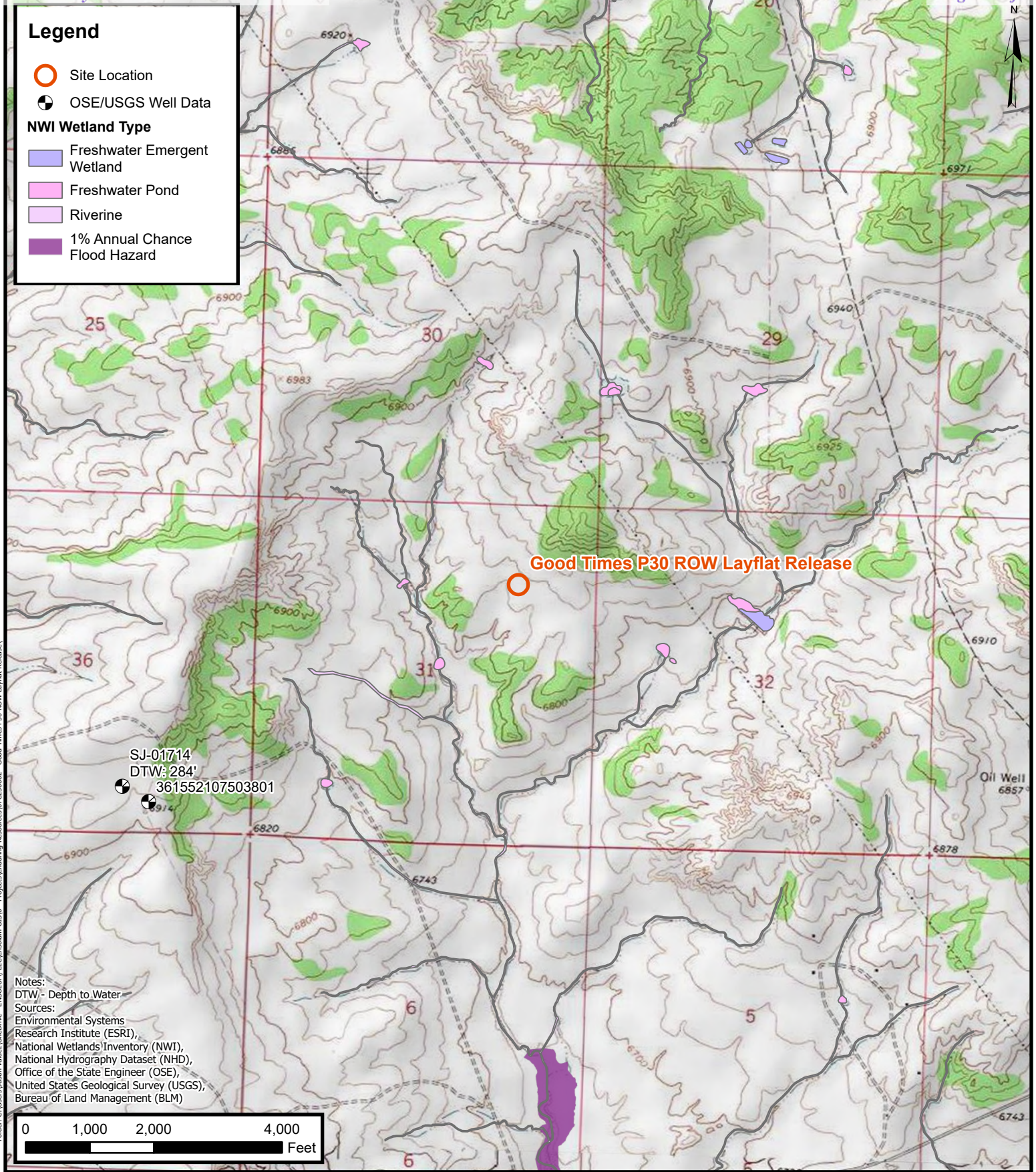
- Figure 1 Site Receptor Map
- Figure 2 Soil Samples Map

- Table 1 Soil Sample Analytical Results

- Attachment 1 Agency Correspondence
- Attachment 2 Laboratory Analytical Report
- Attachment 3 Photographic Log



FIGURES



Folder: C:\Users\Justin.Velez\OneDrive - ENSOLUM, LLC\Ensolum GIS\0 - Projects\Enduring Resources\07C230662 - Good Times P30 ROW Layflat Release\

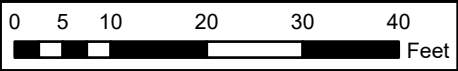
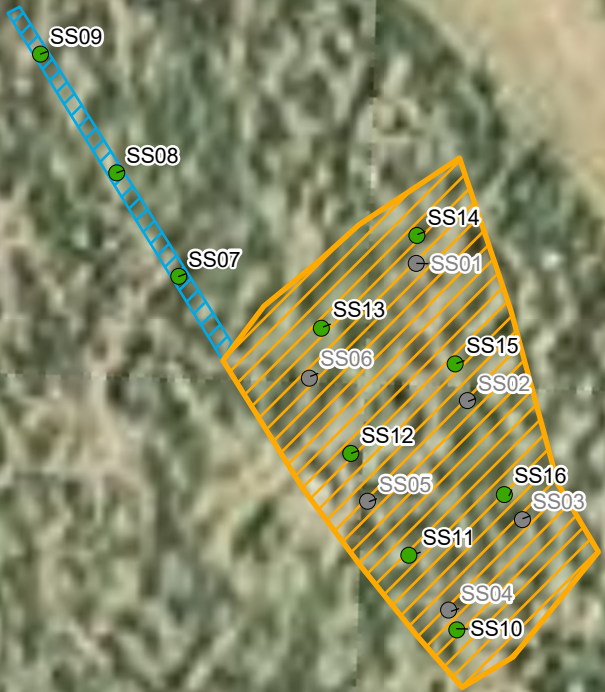
ENSOLUM
Environmental, Engineering and Hydrogeologic Consultants

Site Receptor Map
Good Times P30 ROW Layflat Release
Enduring Resources, LLC
Incident ID: nAPP2606239962
36.274207, -107.825299
San Juan County, New Mexico

FIGURE
1

Legend

- Final Soil Sample Location
- Soil sample areas have been removed by excavation
- Release Extent
- Excavation Extent



Sources: Environmental Systems Research Institute (ESRI)



Soil Samples Map

Good Times P30 ROW Layflat Release
 Enduring Resources, LLC
 Incident ID: nAPP2606239962
 36.274207, -107.825299
 San Juan County, New Mexico

FIGURE

2



TABLES

TABLE 1
SOIL SAMPLE ANALYTICAL RESULTS
GOOD TIMES P30 ROW LAYFLAT RELEASE
 Incident # nAPP2606239962
 Enduring Resources, LLC
 San Juan County, New Mexico

Sample Identification	Date	Depth (feet bgs)	Benzene (mg/kg)	Toluene (mg/kg)	Ethylbenzene (mg/kg)	Xylenes (mg/kg)	Total BTEX (mg/kg)	TPH GRO (mg/kg)	TPH DRO (mg/kg)	TPH MRO (mg/kg)	Total TPH (mg/kg)	Chloride (mg/kg)
NMOCD Closure Criteria for Soils Impacted by a Release			10	NE	NE	NE	50	NE	NE	NE	100	600
SS01	3/6/2026	Surface	<0.0250	<0.0250	<0.0250	0.0548	0.0548	<20.0	<25.0	<50.0	<50.0	3,330
SS02	3/6/2026	Surface	<0.0250	<0.0250	<0.0250	<0.0250	<0.0250	<20.0	33.7	<50.0	33.7	2,460
SS03	3/6/2026	Surface	<0.0250	<0.0250	<0.0250	<0.0250	<0.0250	<20.0	<25.0	<50.0	<50.0	4,170
SS04	3/6/2026	Surface	<0.0250	<0.0250	<0.0250	<0.0250	<0.0250	<20.0	<25.0	<50.0	<50.0	3,580
SS05	3/6/2026	Surface	<0.0250	<0.0250	<0.0250	<0.0250	<0.0250	<20.0	<25.0	<50.0	<50.0	1,820
SS06	3/6/2026	Surface	<0.0250	<0.0250	<0.0250	<0.0250	<0.0250	<20.0	<25.0	<50.0	<50.0	4,650
SS07	3/6/2026	0 - 7	<0.0250	<0.0250	<0.0250	<0.0250	<0.0250	<20.0	<25.0	<50.0	<50.0	332
SS08	3/6/2026	0 - 7	<0.0250	<0.0250	<0.0250	<0.0250	<0.0250	<20.0	<25.0	<50.0	<50.0	494
SS09	3/6/2026	0 - 7	<0.0250	<0.0250	<0.0250	<0.0250	<0.0250	<20.0	<25.0	<50.0	<50.0	33.7
SS10	3/18/2026	1.5	<0.0250	<0.0250	<0.0250	<0.0250	<0.0250	<20.0	<25.0	<50.0	<50.0	<20.0
SS11	3/18/2026	1.5	<0.0250	<0.0250	<0.0250	<0.0250	<0.0250	<20.0	<25.0	<50.0	<50.0	<20.0
SS12	3/18/2026	1.5	<0.0250	<0.0250	<0.0250	<0.0250	<0.0250	<20.0	<25.0	<50.0	<50.0	<20.0
SS13	3/18/2026	1.5	<0.0250	<0.0250	<0.0250	<0.0250	<0.0250	<20.0	<25.0	<50.0	<50.0	<20.0
SS14	3/18/2026	1.5	<0.0250	<0.0250	<0.0250	<0.0250	<0.0250	<20.0	<25.0	<50.0	<50.0	<20.0
SS15	3/18/2026	1.5	<0.0250	<0.0250	<0.0250	<0.0250	<0.0250	<20.0	<25.0	<50.0	<50.0	<20.0
SS16	3/18/2026	1.5	<0.0250	<0.0250	<0.0250	<0.0250	<0.0250	<20.0	<25.0	<50.0	<50.0	<20.0

Notes:

bgs: Below ground surface

BTEX: Benzene, Toluene, Ethylbenzene, and Xylenes

mg/kg: Milligrams per kilogram

NA: Not Analyzed

NE: Not Established

NMOCD: New Mexico Oil Conservation Division

PID: Photoionization detector

ppm: Parts per million

GRO: Gasoline Range Organics

DRO: Diesel Range Organics

MRO: Motor Oil/Lube Oil Range Organics

TPH: Total Petroleum Hydrocarbon

': Feet

<: Indicates result less than the stated laboratory reporting limit (RL)

Concentrations in **bold** and shaded exceed the New Mexico Oil Conservation Division Table I Closure Criteria for Soils Impacted by a Release

Grey and strikethrough text represents soil sample areas that have been excavated



ATTACHMENT 1

Agency Correspondence

Sante Fe Main Office
Phone: (505) 476-3441

General Information
Phone: (505) 629-6116

Online Phone Directory
<https://www.emnrd.nm.gov/ocd/contact-us>

**State of New Mexico
Energy, Minerals and Natural Resources
Oil Conservation Division
1220 S. St Francis Dr.
Santa Fe, NM 87505**

QUESTIONS

Action 559443

QUESTIONS

Operator: DJR OPERATING, LLC 200 Energy Court Farmington, NM 87401	OGRID: 371838
	Action Number: 559443
	Action Type: [NOTIFY] Notification Of Sampling (C-141N)

QUESTIONS

Prerequisites	
Incident ID (n#)	nAPP2606239962
Incident Name	NAPP2606239962 GOOD TIMES P30 LAYFLAT ROW @ A-31-24N-09W
Incident Type	Produced Water Release
Incident Status	Notification Accepted

Location of Release Source	
Site Name	GOOD TIMES P30 LAYFLAT ROW
Date Release Discovered	02/25/2026
Surface Owner	Federal

Sampling Event General Information	
<i>Please answer all the questions in this group.</i>	
What is the sampling surface area in square feet	1,500
What is the estimated number of samples that will be gathered	8
Sampling date pursuant to Subparagraph (a) of Paragraph (1) of Subsection D of 19.15.29.12 NMAC	03/06/2026
Time sampling will commence	12:00 PM
Please provide any information necessary for observers to contact samplers	Danny Burns 303-601-1420
Please provide any information necessary for navigation to sampling site	36.2741510, -107.825249

Sante Fe Main Office
Phone: (505) 476-3441

General Information
Phone: (505) 629-6116

Online Phone Directory
<https://www.emnrd.nm.gov/oed/contact-us>

State of New Mexico
Energy, Minerals and Natural Resources
Oil Conservation Division
1220 S. St Francis Dr.
Santa Fe, NM 87505

CONDITIONS

Action 559443

CONDITIONS

Operator: DJR OPERATING, LLC 200 Energy Court Farmington, NM 87401	OGRID: 371838
	Action Number: 559443
	Action Type: [NOTIFY] Notification Of Sampling (C-141N)

CONDITIONS

Created By	Condition	Condition Date
hhuntington	Failure to notify the OCD of sampling events including any changes in date/time per the requirements of 19.15.29.12.D.(1).(a) NMAC, may result in the remediation closure samples not being accepted.	3/3/2026
hhuntington	If confirmation sampling is going to take place over multiple days, individual C-141N applications must be submitted for each sampling date. Date ranges are not currently accepted on the C-141N application.	3/3/2026

Sante Fe Main Office
Phone: (505) 476-3441

General Information
Phone: (505) 629-6116

Online Phone Directory
<https://www.emnrd.nm.gov/ocd/contact-us>

**State of New Mexico
Energy, Minerals and Natural Resources
Oil Conservation Division
1220 S. St Francis Dr.
Santa Fe, NM 87505**

QUESTIONS

Action 562890

QUESTIONS

Operator: DJR OPERATING, LLC 200 Energy Court Farmington, NM 87401	OGRID: 371838
	Action Number: 562890
	Action Type: [NOTIFY] Notification Of Sampling (C-141N)

QUESTIONS

Prerequisites	
Incident ID (n#)	nAPP2606239962
Incident Name	NAPP2606239962 GOOD TIMES P30 LAYFLAT ROW @ A-31-24N-09W
Incident Type	Produced Water Release
Incident Status	Initial C-141 Approved

Location of Release Source	
Site Name	GOOD TIMES P30 LAYFLAT ROW
Date Release Discovered	02/25/2026
Surface Owner	Federal

Sampling Event General Information	
<i>Please answer all the questions in this group.</i>	
What is the sampling surface area in square feet	1,500
What is the estimated number of samples that will be gathered	8
Sampling date pursuant to Subparagraph (a) of Paragraph (1) of Subsection D of 19.15.29.12 NMAC	03/18/2026
Time sampling will commence	12:00 PM
Please provide any information necessary for observers to contact samplers	Danny Burns 303-601-1420
Please provide any information necessary for navigation to sampling site	36.2741510, -107.825249

Sante Fe Main Office
Phone: (505) 476-3441

General Information
Phone: (505) 629-6116

Online Phone Directory
<https://www.emnrd.nm.gov/oecd/contact-us>

State of New Mexico
Energy, Minerals and Natural Resources
Oil Conservation Division
1220 S. St Francis Dr.
Santa Fe, NM 87505

CONDITIONS

Action 562890

CONDITIONS

Operator: DJR OPERATING, LLC 200 Energy Court Farmington, NM 87401	OGRID: 371838
	Action Number: 562890
	Action Type: [NOTIFY] Notification Of Sampling (C-141N)

CONDITIONS

Created By	Condition	Condition Date
hhuntington	Failure to notify the OCD of sampling events including any changes in date/time per the requirements of 19.15.29.12.D.(1).(a) NMAC, may result in the remediation closure samples not being accepted.	3/13/2026
hhuntington	If confirmation sampling is going to take place over multiple days, individual C-141N applications must be submitted for each sampling date. Date ranges are not currently accepted on the C-141N application.	3/13/2026



ATTACHMENT 2

Laboratory Analytical Reports

Report to:
Danny Burns



envirotech

Practical Solutions for a Better Tomorrow

Analytical Report

Enduring Resources, LLC

Project Name: P30 ROW Lay Flat

Work Order: E603070

Job Number: 17065-0017

Received: 3/6/2026

Revision: 1

Report Reviewed By:

Walter Hinchman
Laboratory Director
3/11/26

5796 U.S. Hwy 64
Farmington, NM 87401

Phone: (505) 632-1881
Envirotech-inc.com



Envirotech Inc. certifies the test results meet all requirements of TNI unless noted otherwise.
Statement of Data Authenticity: Envirotech Inc, attests the data reported has not been altered in any way.
Partial or incomplete reproduction of this report is prohibited, unless approved by Envirotech Inc.
Envirotech Inc, holds the Utah TNI certification NM00979 for data reported.
Envirotech Inc, holds the Texas TNI certification T104704557 for data reported.



Date Reported: 3/11/26

Danny Burns
6300 S Syracuse Way Suite 525
Centennial, CO 80111

Project Name: P30 ROW Lay Flat
Workorder: E603070
Date Received: 3/6/2026 3:31:00PM

Danny Burns,

Thank you for choosing Envirotech, Inc. as your analytical testing laboratory for the sample(s) received on, 3/6/2026 3:31:00PM, under the Project Name: P30 ROW Lay Flat.

The analytical test results summarized in this report with the Project Name: P30 ROW Lay Flat apply to the individual samples collected, identified and submitted bearing the project name on the enclosed chain-of-custody. Subcontracted sample analyses not conducted by Envirotech, Inc., are attached in full as issued by the subcontract laboratory.

Please review the Chain-of-Custody (COC) and Sample Receipt Checklist (SRC) for any issues regarding sample receipt temperature, containers, preservation etc. To best understand your test results, review the entire report summarizing your sample data and the associated quality control batch data.

All reported data in this analytical report were analyzed according to the referenced method(s) and are in compliance with the latest NELAC/TNI standards, unless otherwise noted. Samples or analytical quality control parameters not meeting specific QC criteria are qualified with a data flag. Data flag definitions are located in the Notes and Definitions section of this analytical report.

If you have any questions concerning this report, please feel free to contact Envirotech, Inc.

Respectfully,

Walter Hinchman
Laboratory Director
Office: 505-632-1881
Cell: 775-287-1762
whinchman@envirotech-inc.com

Raina Schwanz
Laboratory Administrator
Office: 505-632-1881
rainaschwanz@envirotech-inc.com

Field Offices:

Southern New Mexico Area

Lynn Jarboe
Laboratory Technical Representative
Office: 505-421-LABS(5227)
Cell: 505-320-4759
ljjarboe@envirotech-inc.com

Michelle Gonzales
Client Representative
Office: 505-421-LABS(5227)
Cell: 505-947-8222
mgonzales@envirotech-inc.com

Envirotech Web Address: www.envirotech-inc.com

Table of Contents

Title Page	1
Cover Page	2
Table of Contents	3
Sample Summary	4
Sample Data	5
SS01	5
SS02	6
SS03	7
SS04	8
SS05	9
SS06	10
SS07	11
SS08	12
SS09	13
QC Summary Data	14
QC - Volatile Organics by EPA 8021B	14
QC - Nonhalogenated Organics by EPA 8015D - GRO	15
QC - Nonhalogenated Organics by EPA 8015D - DRO/ORO	16
QC - Anions by EPA 300.0/9056A	17
Definitions and Notes	18
Chain of Custody etc.	19

Sample Summary

Enduring Resources, LLC 6300 S Syracuse Way Suite 525 Centennial CO, 80111	Project Name: P30 ROW Lay Flat Project Number: 17065-0017 Project Manager: Danny Burns	Reported: 03/11/26 15:32
--	--	------------------------------------

Client Sample ID	Lab Sample ID	Matrix	Sampled	Received	Container
SS01	E603070-01A	Soil	03/06/26	03/06/26	Glass Jar, 4 oz.
SS02	E603070-02A	Soil	03/06/26	03/06/26	Glass Jar, 4 oz.
SS03	E603070-03A	Soil	03/06/26	03/06/26	Glass Jar, 4 oz.
SS04	E603070-04A	Soil	03/06/26	03/06/26	Glass Jar, 4 oz.
SS05	E603070-05A	Soil	03/06/26	03/06/26	Glass Jar, 4 oz.
SS06	E603070-06A	Soil	03/06/26	03/06/26	Glass Jar, 4 oz.
SS07	E603070-07A	Soil	03/06/26	03/06/26	Glass Jar, 4 oz.
SS08	E603070-08A	Soil	03/06/26	03/06/26	Glass Jar, 4 oz.
SS09	E603070-09A	Soil	03/06/26	03/06/26	Glass Jar, 4 oz.



Sample Data

Enduring Resources, LLC 6300 S Syracuse Way Suite 525 Centennial CO, 80111	Project Name: P30 ROW Lay Flat Project Number: 17065-0017 Project Manager: Danny Burns	Reported: 3/11/2026 3:32:10PM
--	--	----------------------------------

SS01

E603070-01

Analyte	Result	Reporting Limit	Dilution	Prepared	Analyzed	Notes
Volatile Organics by EPA 8021B						
	mg/kg	mg/kg		Analyst: MB		Batch: 2611006
Benzene	ND	0.0250	1	03/09/26	03/10/26	
Ethylbenzene	ND	0.0250	1	03/09/26	03/10/26	
Toluene	ND	0.0250	1	03/09/26	03/10/26	
o-Xylene	ND	0.0250	1	03/09/26	03/10/26	
p,m-Xylene	0.0548	0.0500	1	03/09/26	03/10/26	
Total Xylenes	0.0548	0.0250	1	03/09/26	03/10/26	
<i>Surrogate: 4-Bromochlorobenzene-PID</i>						
		94.0 %	70-130	03/09/26	03/10/26	
Nonhalogenated Organics by EPA 8015D - GRO						
	mg/kg	mg/kg		Analyst: MB		Batch: 2611006
Gasoline Range Organics (C6-C10)	ND	20.0	1	03/09/26	03/10/26	
<i>Surrogate: 1-Chloro-4-fluorobenzene-FID</i>						
		93.2 %	70-130	03/09/26	03/10/26	
Nonhalogenated Organics by EPA 8015D - DRO/ORO						
	mg/kg	mg/kg		Analyst: NV		Batch: 2611017
Diesel Range Organics (C10-C28)	ND	25.0	1	03/09/26	03/10/26	
Oil Range Organics (C28-C36)	ND	50.0	1	03/09/26	03/10/26	
<i>Surrogate: n-Nonane</i>						
		79.7 %	61-141	03/09/26	03/10/26	
Anions by EPA 300.0/9056A						
	mg/kg	mg/kg		Analyst: TP		Batch: 2611023
Chloride	3330	40.0	2	03/09/26	03/09/26	



Sample Data

Enduring Resources, LLC 6300 S Syracuse Way Suite 525 Centennial CO, 80111	Project Name: P30 ROW Lay Flat Project Number: 17065-0017 Project Manager: Danny Burns	Reported: 3/11/2026 3:32:10PM
--	--	---

SS02

E603070-02

Analyte	Result	Reporting Limit	Dilution	Prepared	Analyzed	Notes
Volatile Organics by EPA 8021B	mg/kg	mg/kg		Analyst: MB		Batch: 2611006
Benzene	ND	0.0250	1	03/09/26	03/10/26	
Ethylbenzene	ND	0.0250	1	03/09/26	03/10/26	
Toluene	ND	0.0250	1	03/09/26	03/10/26	
o-Xylene	ND	0.0250	1	03/09/26	03/10/26	
p,m-Xylene	ND	0.0500	1	03/09/26	03/10/26	
Total Xylenes	ND	0.0250	1	03/09/26	03/10/26	
<i>Surrogate: 4-Bromochlorobenzene-PID</i>		97.0 %	70-130	03/09/26	03/10/26	
Nonhalogenated Organics by EPA 8015D - GRO	mg/kg	mg/kg		Analyst: MB		Batch: 2611006
Gasoline Range Organics (C6-C10)	ND	20.0	1	03/09/26	03/10/26	
<i>Surrogate: 1-Chloro-4-fluorobenzene-FID</i>		92.4 %	70-130	03/09/26	03/10/26	
Nonhalogenated Organics by EPA 8015D - DRO/ORO	mg/kg	mg/kg		Analyst: NV		Batch: 2611017
Diesel Range Organics (C10-C28)	33.7	25.0	1	03/09/26	03/10/26	
Oil Range Organics (C28-C36)	ND	50.0	1	03/09/26	03/10/26	
<i>Surrogate: n-Nonane</i>		78.0 %	61-141	03/09/26	03/10/26	
Anions by EPA 300.0/9056A	mg/kg	mg/kg		Analyst: TP		Batch: 2611023
Chloride	2460	40.0	2	03/09/26	03/09/26	



Sample Data

Enduring Resources, LLC 6300 S Syracuse Way Suite 525 Centennial CO, 80111	Project Name: P30 ROW Lay Flat Project Number: 17065-0017 Project Manager: Danny Burns	Reported: 3/11/2026 3:32:10PM
--	--	---

SS03

E603070-03

Analyte	Result	Reporting Limit	Dilution	Prepared	Analyzed	Notes
Volatile Organics by EPA 8021B	mg/kg	mg/kg		Analyst: MB		Batch: 2611006
Benzene	ND	0.0250	1	03/09/26	03/10/26	
Ethylbenzene	ND	0.0250	1	03/09/26	03/10/26	
Toluene	ND	0.0250	1	03/09/26	03/10/26	
o-Xylene	ND	0.0250	1	03/09/26	03/10/26	
p,m-Xylene	ND	0.0500	1	03/09/26	03/10/26	
Total Xylenes	ND	0.0250	1	03/09/26	03/10/26	
<i>Surrogate: 4-Bromochlorobenzene-PID</i>		94.4 %	70-130	03/09/26	03/10/26	
Nonhalogenated Organics by EPA 8015D - GRO	mg/kg	mg/kg		Analyst: MB		Batch: 2611006
Gasoline Range Organics (C6-C10)	ND	20.0	1	03/09/26	03/10/26	
<i>Surrogate: 1-Chloro-4-fluorobenzene-FID</i>		93.8 %	70-130	03/09/26	03/10/26	
Nonhalogenated Organics by EPA 8015D - DRO/ORO	mg/kg	mg/kg		Analyst: NV		Batch: 2611017
Diesel Range Organics (C10-C28)	ND	25.0	1	03/09/26	03/10/26	
Oil Range Organics (C28-C36)	ND	50.0	1	03/09/26	03/10/26	
<i>Surrogate: n-Nonane</i>		77.7 %	61-141	03/09/26	03/10/26	
Anions by EPA 300.0/9056A	mg/kg	mg/kg		Analyst: TP		Batch: 2611023
Chloride	4170	100	5	03/09/26	03/09/26	



Sample Data

Enduring Resources, LLC 6300 S Syracuse Way Suite 525 Centennial CO, 80111	Project Name: P30 ROW Lay Flat Project Number: 17065-0017 Project Manager: Danny Burns	Reported: 3/11/2026 3:32:10PM
--	--	---

SS04

E603070-04

Analyte	Result	Reporting Limit	Dilution	Prepared	Analyzed	Notes
Volatile Organics by EPA 8021B	mg/kg	mg/kg		Analyst: MB		Batch: 2611006
Benzene	ND	0.0250	1	03/09/26	03/10/26	
Ethylbenzene	ND	0.0250	1	03/09/26	03/10/26	
Toluene	ND	0.0250	1	03/09/26	03/10/26	
o-Xylene	ND	0.0250	1	03/09/26	03/10/26	
p,m-Xylene	ND	0.0500	1	03/09/26	03/10/26	
Total Xylenes	ND	0.0250	1	03/09/26	03/10/26	
<i>Surrogate: 4-Bromochlorobenzene-PID</i>		92.2 %	70-130	03/09/26	03/10/26	
Nonhalogenated Organics by EPA 8015D - GRO	mg/kg	mg/kg		Analyst: MB		Batch: 2611006
Gasoline Range Organics (C6-C10)	ND	20.0	1	03/09/26	03/10/26	
<i>Surrogate: 1-Chloro-4-fluorobenzene-FID</i>		92.8 %	70-130	03/09/26	03/10/26	
Nonhalogenated Organics by EPA 8015D - DRO/ORO	mg/kg	mg/kg		Analyst: NV		Batch: 2611017
Diesel Range Organics (C10-C28)	ND	25.0	1	03/09/26	03/10/26	
Oil Range Organics (C28-C36)	ND	50.0	1	03/09/26	03/10/26	
<i>Surrogate: n-Nonane</i>		81.7 %	61-141	03/09/26	03/10/26	
Anions by EPA 300.0/9056A	mg/kg	mg/kg		Analyst: TP		Batch: 2611023
Chloride	3580	40.0	2	03/09/26	03/09/26	



Sample Data

Enduring Resources, LLC 6300 S Syracuse Way Suite 525 Centennial CO, 80111	Project Name: P30 ROW Lay Flat Project Number: 17065-0017 Project Manager: Danny Burns	Reported: 3/11/2026 3:32:10PM
--	--	---

SS05

E603070-05

Analyte	Result	Reporting Limit	Dilution	Prepared	Analyzed	Notes
Volatile Organics by EPA 8021B	mg/kg	mg/kg		Analyst: MB		Batch: 2611006
Benzene	ND	0.0250	1	03/09/26	03/10/26	
Ethylbenzene	ND	0.0250	1	03/09/26	03/10/26	
Toluene	ND	0.0250	1	03/09/26	03/10/26	
o-Xylene	ND	0.0250	1	03/09/26	03/10/26	
p,m-Xylene	ND	0.0500	1	03/09/26	03/10/26	
Total Xylenes	ND	0.0250	1	03/09/26	03/10/26	
<i>Surrogate: 4-Bromochlorobenzene-PID</i>		92.4 %	70-130	03/09/26	03/10/26	
Nonhalogenated Organics by EPA 8015D - GRO	mg/kg	mg/kg		Analyst: MB		Batch: 2611006
Gasoline Range Organics (C6-C10)	ND	20.0	1	03/09/26	03/10/26	
<i>Surrogate: 1-Chloro-4-fluorobenzene-FID</i>		96.5 %	70-130	03/09/26	03/10/26	
Nonhalogenated Organics by EPA 8015D - DRO/ORO	mg/kg	mg/kg		Analyst: NV		Batch: 2611017
Diesel Range Organics (C10-C28)	ND	25.0	1	03/09/26	03/10/26	
Oil Range Organics (C28-C36)	ND	50.0	1	03/09/26	03/10/26	
<i>Surrogate: n-Nonane</i>		83.1 %	61-141	03/09/26	03/10/26	
Anions by EPA 300.0/9056A	mg/kg	mg/kg		Analyst: TP		Batch: 2611023
Chloride	1820	40.0	2	03/09/26	03/09/26	



Sample Data

Enduring Resources, LLC 6300 S Syracuse Way Suite 525 Centennial CO, 80111	Project Name: P30 ROW Lay Flat Project Number: 17065-0017 Project Manager: Danny Burns	Reported: 3/11/2026 3:32:10PM
--	--	---

SS06

E603070-06

Analyte	Result	Reporting Limit	Dilution	Prepared	Analyzed	Notes
Volatile Organics by EPA 8021B	mg/kg	mg/kg		Analyst: MB		Batch: 2611006
Benzene	ND	0.0250	1	03/09/26	03/10/26	
Ethylbenzene	ND	0.0250	1	03/09/26	03/10/26	
Toluene	ND	0.0250	1	03/09/26	03/10/26	
o-Xylene	ND	0.0250	1	03/09/26	03/10/26	
p,m-Xylene	ND	0.0500	1	03/09/26	03/10/26	
Total Xylenes	ND	0.0250	1	03/09/26	03/10/26	
<i>Surrogate: 4-Bromochlorobenzene-PID</i>		93.4 %	70-130	03/09/26	03/10/26	
Nonhalogenated Organics by EPA 8015D - GRO	mg/kg	mg/kg		Analyst: MB		Batch: 2611006
Gasoline Range Organics (C6-C10)	ND	20.0	1	03/09/26	03/10/26	
<i>Surrogate: 1-Chloro-4-fluorobenzene-FID</i>		95.6 %	70-130	03/09/26	03/10/26	
Nonhalogenated Organics by EPA 8015D - DRO/ORO	mg/kg	mg/kg		Analyst: NV		Batch: 2611017
Diesel Range Organics (C10-C28)	ND	25.0	1	03/09/26	03/10/26	
Oil Range Organics (C28-C36)	ND	50.0	1	03/09/26	03/10/26	
<i>Surrogate: n-Nonane</i>		79.8 %	61-141	03/09/26	03/10/26	
Anions by EPA 300.0/9056A	mg/kg	mg/kg		Analyst: TP		Batch: 2611023
Chloride	4650	100	5	03/09/26	03/10/26	



Sample Data

Enduring Resources, LLC 6300 S Syracuse Way Suite 525 Centennial CO, 80111	Project Name: P30 ROW Lay Flat Project Number: 17065-0017 Project Manager: Danny Burns	Reported: 3/11/2026 3:32:10PM
--	--	---

SS07

E603070-07

Analyte	Result	Reporting Limit	Dilution	Prepared	Analyzed	Notes
Volatile Organics by EPA 8021B	mg/kg	mg/kg		Analyst: MB		Batch: 2611006
Benzene	ND	0.0250	1	03/09/26	03/10/26	
Ethylbenzene	ND	0.0250	1	03/09/26	03/10/26	
Toluene	ND	0.0250	1	03/09/26	03/10/26	
o-Xylene	ND	0.0250	1	03/09/26	03/10/26	
p,m-Xylene	ND	0.0500	1	03/09/26	03/10/26	
Total Xylenes	ND	0.0250	1	03/09/26	03/10/26	
<i>Surrogate: 4-Bromochlorobenzene-PID</i>		92.5 %	70-130	03/09/26	03/10/26	
Nonhalogenated Organics by EPA 8015D - GRO	mg/kg	mg/kg		Analyst: MB		Batch: 2611006
Gasoline Range Organics (C6-C10)	ND	20.0	1	03/09/26	03/10/26	
<i>Surrogate: 1-Chloro-4-fluorobenzene-FID</i>		92.4 %	70-130	03/09/26	03/10/26	
Nonhalogenated Organics by EPA 8015D - DRO/ORO	mg/kg	mg/kg		Analyst: NV		Batch: 2611017
Diesel Range Organics (C10-C28)	ND	25.0	1	03/09/26	03/10/26	
Oil Range Organics (C28-C36)	ND	50.0	1	03/09/26	03/10/26	
<i>Surrogate: n-Nonane</i>		77.1 %	61-141	03/09/26	03/10/26	
Anions by EPA 300.0/9056A	mg/kg	mg/kg		Analyst: TP		Batch: 2611023
Chloride	332	20.0	1	03/09/26	03/10/26	



Sample Data

Enduring Resources, LLC 6300 S Syracuse Way Suite 525 Centennial CO, 80111	Project Name: P30 ROW Lay Flat Project Number: 17065-0017 Project Manager: Danny Burns	Reported: 3/11/2026 3:32:10PM
--	--	---

SS08

E603070-08

Analyte	Result	Reporting Limit	Dilution	Prepared	Analyzed	Notes
Volatile Organics by EPA 8021B	mg/kg	mg/kg		Analyst: MB		Batch: 2611006
Benzene	ND	0.0250	1	03/09/26	03/10/26	
Ethylbenzene	ND	0.0250	1	03/09/26	03/10/26	
Toluene	ND	0.0250	1	03/09/26	03/10/26	
o-Xylene	ND	0.0250	1	03/09/26	03/10/26	
p,m-Xylene	ND	0.0500	1	03/09/26	03/10/26	
Total Xylenes	ND	0.0250	1	03/09/26	03/10/26	
<i>Surrogate: 4-Bromochlorobenzene-PID</i>		93.4 %	70-130	03/09/26	03/10/26	
Nonhalogenated Organics by EPA 8015D - GRO	mg/kg	mg/kg		Analyst: MB		Batch: 2611006
Gasoline Range Organics (C6-C10)	ND	20.0	1	03/09/26	03/10/26	
<i>Surrogate: 1-Chloro-4-fluorobenzene-FID</i>		97.4 %	70-130	03/09/26	03/10/26	
Nonhalogenated Organics by EPA 8015D - DRO/ORO	mg/kg	mg/kg		Analyst: NV		Batch: 2611017
Diesel Range Organics (C10-C28)	ND	25.0	1	03/09/26	03/10/26	
Oil Range Organics (C28-C36)	ND	50.0	1	03/09/26	03/10/26	
<i>Surrogate: n-Nonane</i>		81.9 %	61-141	03/09/26	03/10/26	
Anions by EPA 300.0/9056A	mg/kg	mg/kg		Analyst: TP		Batch: 2611023
Chloride	494	20.0	1	03/09/26	03/10/26	



Sample Data

Enduring Resources, LLC 6300 S Syracuse Way Suite 525 Centennial CO, 80111	Project Name: P30 ROW Lay Flat Project Number: 17065-0017 Project Manager: Danny Burns	Reported: 3/11/2026 3:32:10PM
--	--	---

SS09

E603070-09

Analyte	Result	Reporting Limit	Dilution	Prepared	Analyzed	Notes
Volatile Organics by EPA 8021B	mg/kg	mg/kg		Analyst: MB		Batch: 2611006
Benzene	ND	0.0250	1	03/09/26	03/10/26	
Ethylbenzene	ND	0.0250	1	03/09/26	03/10/26	
Toluene	ND	0.0250	1	03/09/26	03/10/26	
o-Xylene	ND	0.0250	1	03/09/26	03/10/26	
p,m-Xylene	ND	0.0500	1	03/09/26	03/10/26	
Total Xylenes	ND	0.0250	1	03/09/26	03/10/26	
<i>Surrogate: 4-Bromochlorobenzene-PID</i>		91.5 %	70-130	03/09/26	03/10/26	
Nonhalogenated Organics by EPA 8015D - GRO	mg/kg	mg/kg		Analyst: MB		Batch: 2611006
Gasoline Range Organics (C6-C10)	ND	20.0	1	03/09/26	03/10/26	
<i>Surrogate: 1-Chloro-4-fluorobenzene-FID</i>		99.9 %	70-130	03/09/26	03/10/26	
Nonhalogenated Organics by EPA 8015D - DRO/ORO	mg/kg	mg/kg		Analyst: NV		Batch: 2611017
Diesel Range Organics (C10-C28)	ND	25.0	1	03/09/26	03/10/26	
Oil Range Organics (C28-C36)	ND	50.0	1	03/09/26	03/10/26	
<i>Surrogate: n-Nonane</i>		84.8 %	61-141	03/09/26	03/10/26	
Anions by EPA 300.0/9056A	mg/kg	mg/kg		Analyst: TP		Batch: 2611023
Chloride	33.7	20.0	1	03/09/26	03/10/26	



QC Summary Data

Enduring Resources, LLC 6300 S Syracuse Way Suite 525 Centennial CO, 80111	Project Name: P30 ROW Lay Flat Project Number: 17065-0017 Project Manager: Danny Burns	Reported: 3/11/2026 3:32:10PM
--	--	---

Volatile Organics by EPA 8021B

Analyst: MB

Analyte	Result mg/kg	Reporting Limit mg/kg	Spike Level mg/kg	Source Result mg/kg	Rec %	Rec Limits %	RPD %	RPD Limit %	Notes
---------	-----------------	-----------------------------	-------------------------	---------------------------	----------	--------------------	----------	-------------------	-------

Blank (2611006-BLK1)

Prepared: 03/09/26 Analyzed: 03/09/26

Benzene	ND	0.0250							
Ethylbenzene	ND	0.0250							
Toluene	ND	0.0250							
o-Xylene	ND	0.0250							
p,m-Xylene	ND	0.0500							
Total Xylenes	ND	0.0250							
Surrogate: 4-Bromochlorobenzene-PID	7.16		8.00		89.5	70-130			

LCS (2611006-BS1)

Prepared: 03/09/26 Analyzed: 03/10/26

Benzene	4.29	0.0250	5.00		85.8	70-130			
Ethylbenzene	4.02	0.0250	5.00		80.5	70-130			
Toluene	4.18	0.0250	5.00		83.7	70-130			
o-Xylene	4.11	0.0250	5.00		82.2	70-130			
p,m-Xylene	8.26	0.0500	10.0		82.6	70-130			
Total Xylenes	12.4	0.0250	15.0		82.5	70-130			
Surrogate: 4-Bromochlorobenzene-PID	7.60		8.00		95.0	70-130			

Matrix Spike (2611006-MS1)

Source: E603070-02

Prepared: 03/09/26 Analyzed: 03/10/26

Benzene	4.97	0.0250	5.00	ND	99.5	70-130			
Ethylbenzene	4.62	0.0250	5.00	ND	92.4	70-130			
Toluene	4.83	0.0250	5.00	ND	96.5	70-130			
o-Xylene	4.72	0.0250	5.00	ND	94.5	70-130			
p,m-Xylene	9.43	0.0500	10.0	ND	94.3	70-130			
Total Xylenes	14.2	0.0250	15.0	ND	94.4	70-130			
Surrogate: 4-Bromochlorobenzene-PID	7.52		8.00		94.0	70-130			

Matrix Spike Dup (2611006-MSD1)

Source: E603070-02

Prepared: 03/09/26 Analyzed: 03/10/26

Benzene	5.33	0.0250	5.00	ND	107	70-130	6.99	27	
Ethylbenzene	4.97	0.0250	5.00	ND	99.5	70-130	7.36	26	
Toluene	5.18	0.0250	5.00	ND	104	70-130	7.14	20	
o-Xylene	5.08	0.0250	5.00	ND	102	70-130	7.18	25	
p,m-Xylene	10.1	0.0500	10.0	ND	101	70-130	7.23	23	
Total Xylenes	15.2	0.0250	15.0	ND	101	70-130	7.21	26	
Surrogate: 4-Bromochlorobenzene-PID	7.58		8.00		94.7	70-130			



QC Summary Data

Enduring Resources, LLC 6300 S Syracuse Way Suite 525 Centennial CO, 80111	Project Name: P30 ROW Lay Flat Project Number: 17065-0017 Project Manager: Danny Burns	Reported: 3/11/2026 3:32:10PM
--	--	---

Nonhalogenated Organics by EPA 8015D - GRO

Analyst: MB

Analyte	Result mg/kg	Reporting Limit mg/kg	Spike Level mg/kg	Source Result mg/kg	Rec %	Rec Limits %	RPD %	RPD Limit %	Notes
---------	-----------------	-----------------------------	-------------------------	---------------------------	----------	--------------------	----------	-------------------	-------

Blank (2611006-BLK1)

Prepared: 03/09/26 Analyzed: 03/09/26

Gasoline Range Organics (C6-C10)	ND	20.0							
Surrogate: 1-Chloro-4-fluorobenzene-FID	7.61		8.00		95.1	70-130			

LCS (2611006-BS2)

Prepared: 03/09/26 Analyzed: 03/10/26

Gasoline Range Organics (C6-C10)	45.1	20.0	50.0		90.2	70-130			
Surrogate: 1-Chloro-4-fluorobenzene-FID	7.44		8.00		93.0	70-130			

Matrix Spike (2611006-MS2)

Source: E603070-02

Prepared: 03/09/26 Analyzed: 03/10/26

Gasoline Range Organics (C6-C10)	55.9	20.0	50.0	ND	112	70-130			
Surrogate: 1-Chloro-4-fluorobenzene-FID	7.49		8.00		93.6	70-130			

Matrix Spike Dup (2611006-MSD2)

Source: E603070-02

Prepared: 03/09/26 Analyzed: 03/10/26

Gasoline Range Organics (C6-C10)	51.3	20.0	50.0	ND	103	70-130	8.68	20	
Surrogate: 1-Chloro-4-fluorobenzene-FID	7.59		8.00		94.9	70-130			



QC Summary Data

Enduring Resources, LLC 6300 S Syracuse Way Suite 525 Centennial CO, 80111	Project Name: P30 ROW Lay Flat Project Number: 17065-0017 Project Manager: Danny Burns	Reported: 3/11/2026 3:32:10PM
--	--	---

Nonhalogenated Organics by EPA 8015D - DRO/ORO

Analyst: NV

Analyte	Result mg/kg	Reporting Limit mg/kg	Spike Level mg/kg	Source Result mg/kg	Rec %	Rec Limits %	RPD %	RPD Limit %	Notes
---------	-----------------	-----------------------------	-------------------------	---------------------------	----------	--------------------	----------	-------------------	-------

Blank (2611017-BLK1)

Prepared: 03/09/26 Analyzed: 03/09/26

Diesel Range Organics (C10-C28)	ND	25.0							
Oil Range Organics (C28-C36)	ND	50.0							
Surrogate: <i>n</i> -Nonane	42.9		50.0		85.8	61-141			

LCS (2611017-BS1)

Prepared: 03/09/26 Analyzed: 03/09/26

Diesel Range Organics (C10-C28)	234	25.0	250		93.8	66-144			
Surrogate: <i>n</i> -Nonane	40.9		50.0		81.9	61-141			

Matrix Spike (2611017-MS1)

Source: E603066-02

Prepared: 03/09/26 Analyzed: 03/09/26

Diesel Range Organics (C10-C28)	259	25.0	250	49.1	84.1	56-156			
Surrogate: <i>n</i> -Nonane	41.2		50.0		82.4	61-141			

Matrix Spike Dup (2611017-MSD1)

Source: E603066-02

Prepared: 03/09/26 Analyzed: 03/09/26

Diesel Range Organics (C10-C28)	296	25.0	250	49.1	98.9	56-156	13.4	20	
Surrogate: <i>n</i> -Nonane	41.3		50.0		82.6	61-141			



QC Summary Data

Enduring Resources, LLC 6300 S Syracuse Way Suite 525 Centennial CO, 80111	Project Name: P30 ROW Lay Flat Project Number: 17065-0017 Project Manager: Danny Burns	Reported: 3/11/2026 3:32:10PM
--	--	---

Anions by EPA 300.0/9056A

Analyst: TP

Analyte	Result mg/kg	Reporting Limit mg/kg	Spike Level mg/kg	Source Result mg/kg	Rec %	Rec Limits %	RPD %	RPD Limit %	Notes
---------	-----------------	-----------------------------	-------------------------	---------------------------	----------	--------------------	----------	-------------------	-------

Blank (2611023-BLK1)

Prepared: 03/09/26 Analyzed: 03/09/26

Chloride ND 20.0

LCS (2611023-BS1)

Prepared: 03/09/26 Analyzed: 03/09/26

Chloride 263 20.0 250 105 90-110

Matrix Spike (2611023-MS1)

Source: E603070-01

Prepared: 03/09/26 Analyzed: 03/09/26

Chloride 3510 40.0 250 3330 74.8 80-120 M4

Matrix Spike Dup (2611023-MSD1)

Source: E603070-01

Prepared: 03/09/26 Analyzed: 03/09/26

Chloride 3410 40.0 250 3330 34.2 80-120 2.93 20 M4

QC Summary Report Comment:

Calculations are based off of the raw (non-rounded) data. However, for reporting purposes all QC data is rounded to three significant figures. Therefore, hand calculated values may differ slightly.



Definitions and Notes

Enduring Resources, LLC 6300 S Syracuse Way Suite 525 Centennial CO, 80111	Project Name: P30 ROW Lay Flat Project Number: 17065-0017 Project Manager: Danny Burns	Reported: 03/11/26 15:32
--	--	------------------------------------

M4 Matrix spike recovery value is suspect since the analyte concentration in the sample is disproportionate to the spike level. The associated LCS spike recovery was acceptable.

ND Analyte NOT DETECTED at or above the reporting limit

NR Not Reported

RPD Relative Percent Difference

DNI Did Not Ignite

DNR Did not react with the addition of acid or base.

Note (1): Methods marked with ** are non-accredited methods.

Note (2): Soil data is reported on an "as received" weight basis, unless reported otherwise.



Client Information				Invoice Information				Lab Use Only				TAT				State			
Client: <u>ENDURING RESOURCES/ENSOLUM</u>				Company: <u>ENDURING RESOURCES</u>				Lab WO# <u>ELE03070</u>		Job Number <u>17065-0017</u>		1D	2D	3D	Std	NM	CO	UT	TX
Project Name: <u>P30 Row LayFlat</u>				Address:												<input checked="" type="checkbox"/>			
Project Manager: <u>Danny Burns</u>				City, State, Zip:															
Address:				Phone:															
City, State, Zip:				Email: <u>pritter@enduringresources.com</u>															
Phone:				Miscellaneous:															
Email: <u>dburns@ensolum.com</u>				CC: <u>SKhane.ensolum.com</u>															
Sample Information											Analysis and Method				EPA Program				
Time Sampled	Date Sampled	Matrix	No. of Containers	Sample ID	Field Filter	Lab Number	DRO/ORO by 8015	GRO/DRO by 8015	BTEX by 8021	VOC by 8260	Chloride 300.0	TCEQ 1005 - TX	RCRA 8 Metals	BGDOC - NM	BGDOC - TX	SDWA	CWA	RCRA	
1239	3/6	SOIL	1	SS01		1	X	X	X		X								
1249	3/6	SOIL	1	SS02		2	X	X	X		X								
1255	3/6	SOIL	1	SS03		3	X	X	X		X								
1300	3/6	SOIL	1	SS04		4	X	X	X		X								
1310	3/6	SOIL	1	SS05		5	X	X	X		X								
1320	3/6	SOIL	1	SS06		6	X	X	X		X								
1340	3/6	SOIL	1	SS07		7	X	X	X		X								
1354	3/6	SOIL	1	SS08		8	X	X	X		X								
1410	3/6	SOIL	1	SS09		9	X	X	X		X								
Additional Instructions:																			
I, (field sampler), attest to the validity and authenticity of this sample. I am aware that tampering with or intentionally mislabeling the sample location, date or time of collection is considered fraud and may be grounds for legal action.																			
Sampled by: <u>Aaron Lamcman</u>																			
Relinquished by: (Signature) <u>[Signature]</u>				Date: <u>3/6/26</u>		Time: <u>1530</u>		Received by: (Signature) <u>[Signature]</u>				Date: <u>3-6-26</u>		Time: <u>1531</u>		Samples requiring thermal preservation must be received on ice the day they are sampled or received packed on ice at a temp above 0 but less than 6°C on subsequent days. Lab Use Only Received on ice: <input checked="" type="checkbox"/> Y <input type="checkbox"/> N			
Relinquished by: (Signature)				Date:		Time:		Received by: (Signature)				Date:		Time:					
Relinquished by: (Signature)				Date:		Time:		Received by: (Signature)				Date:		Time:					
Relinquished by: (Signature)				Date:		Time:		Received by: (Signature)				Date:		Time:					
Relinquished by: (Signature)				Date:		Time:		Received by: (Signature)				Date:		Time:					
Sample Matrix: S - Soil, sd - Solid, sg - Sludge, A - Aqueous, O - Other										Container Type: g - glass, p - poly/plastic, ag - amber glass, v - VOA									
Note: Samples are discarded 14 days after results are reported unless other arrangements are made. Hazardous samples will be returned to client or disposed of at the client expense. The report for the analysis of the above samples is applicable only to those samples received by the laboratory with this COC. The liability of the laboratory is limited to the amount paid for on the report.																			

Envirotech Analytical Laboratory

Printed: 3/6/2026 3:44:43PM

Sample Receipt Checklist (SRC)

Instructions: Please take note of any NO checkmarks.

If we receive no response concerning these items within 24 hours of the date of this notice, all the samples will be analyzed as requested.

Client: Enduring Resources, LLC	Date Received: 03/06/26 15:31	Work Order ID: E603070
Phone: (303) 601-1420	Date Logged In: 03/06/26 15:42	Logged In By: Caitlin Mars
Email: dburns@ensolum.com	Due Date: 03/11/26 17:00 (3 day TAT)	

Chain of Custody (COC)

- 1. Does the sample ID match the COC? Yes
- 2. Does the number of samples per sampling site location match the COC? Yes
- 3. Were samples dropped off by client or carrier? Yes
- 4. Was the COC complete, i.e., signatures, dates/times, requested analyses? Yes
- 5. Were all samples received within holding time? Yes

Carrier: Aaron L

Note: Analysis, such as pH which should be conducted in the field, i.e, 15 minute hold time, are not included in this discussion.

Comments/Resolution

Sample Turn Around Time (TAT)

- 6. Did the COC indicate standard TAT, or Expedited TAT? Yes

Sample Cooler

- 7. Was a sample cooler received? Yes
- 8. If yes, was cooler received in good condition? Yes
- 9. Was the sample(s) received intact, i.e., not broken? Yes
- 10. Were custody/security seals present? No
- 11. If yes, were custody/security seals intact? NA
- 12. Was the sample received on ice? Yes

Note: Thermal preservation is not required, if samples are received within 15 minutes of sampling

- 13. See COC for individual sample temps. Samples outside of 0°C-6°C will be recorded in comments.

Sample Container

- 14. Are aqueous VOC samples present? No
- 15. Are VOC samples collected in VOA Vials? NA
- 16. Is the head space less than 6-8 mm (pea sized or less)? NA
- 17. Was a trip blank (TB) included for VOC analyses? NA
- 18. Are non-VOC samples collected in the correct containers? Yes
- 19. Is the appropriate volume/weight or number of sample containers collected? Yes

Field Label

- 20. Were field sample labels filled out with the minimum information:
 - Sample ID? Yes
 - Date/Time Collected? Yes
 - Collectors name? Yes

Sample Preservation

- 21. Does the COC or field labels indicate the samples were preserved? No
- 22. Are sample(s) correctly preserved? NA
- 24. Is lab filtration required and/or requested for dissolved metals? No

Multiphase Sample Matrix

- 26. Does the sample have more than one phase, i.e., multiphase? No
- 27. If yes, does the COC specify which phase(s) is to be analyzed? NA

Subcontract Laboratory

- 28. Are samples required to get sent to a subcontract laboratory? No
- 29. Was a subcontract laboratory specified by the client and if so who? NA Subcontract Lab: NA

Client Instruction

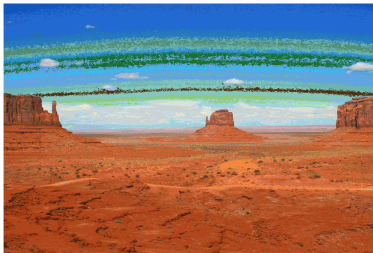
Signature of client authorizing changes to the COC or sample disposition.

Date



envirotech Inc.

Report to:
Tim Friesenhahn



envirotech

Practical Solutions for a Better Tomorrow

Analytical Report

Enduring Resources, LLC

Project Name: Good Times P30 ROW Layflat

Work Order: E603220

Job Number: 17065-0017

Received: 3/18/2026

Revision: 1

Report Reviewed By:

Walter Hinchman
Laboratory Director
3/20/26

5796 U.S. Hwy 64
Farmington, NM 87401

Phone: (505) 632-1881
Envirotech-inc.com



Envirotech Inc. certifies the test results meet all requirements of TNI unless noted otherwise.
Statement of Data Authenticity: Envirotech Inc, attests the data reported has not been altered in any way.
Partial or incomplete reproduction of this report is prohibited, unless approved by Envirotech Inc.
Envirotech Inc, holds the Utah TNI certification NM00979 for data reported.
Envirotech Inc, holds the Texas TNI certification T104704557 for data reported.



Date Reported: 3/20/26

Tim Friesenhahn
6300 S Syracuse Way Suite 525
Centennial, CO 80111

Project Name: Good Times P30 ROW Layflat
Workorder: E603220
Date Received: 3/18/2026 2:17:00PM

Tim Friesenhahn,

Thank you for choosing Envirotech, Inc. as your analytical testing laboratory for the sample(s) received on, 3/18/2026 2:17:00PM, under the Project Name: Good Times P30 ROW Layflat.

The analytical test results summarized in this report with the Project Name: Good Times P30 ROW Layflat apply to the individual samples collected, identified and submitted bearing the project name on the enclosed chain-of-custody. Subcontracted sample analyses not conducted by Envirotech, Inc., are attached in full as issued by the subcontract laboratory.

Please review the Chain-of-Custody (COC) and Sample Receipt Checklist (SRC) for any issues regarding sample receipt temperature, containers, preservation etc. To best understand your test results, review the entire report summarizing your sample data and the associated quality control batch data.

All reported data in this analytical report were analyzed according to the referenced method(s) and are in compliance with the latest NELAC/TNI standards, unless otherwise noted. Samples or analytical quality control parameters not meeting specific QC criteria are qualified with a data flag. Data flag definitions are located in the Notes and Definitions section of this analytical report.

If you have any questions concerning this report, please feel free to contact Envirotech, Inc.

Respectfully,

Walter Hinchman
Laboratory Director
Office: 505-632-1881
Cell: 775-287-1762
whinchman@envirotech-inc.com

Raina Schwanz
Laboratory Administrator
Office: 505-632-1881
rainaschwanz@envirotech-inc.com

Field Offices:

Southern New Mexico Area

Lynn Jarboe
Laboratory Technical Representative
Office: 505-421-LABS(5227)
Cell: 505-320-4759
ljjarboe@envirotech-inc.com

Michelle Gonzales
Client Representative
Office: 505-421-LABS(5227)
Cell: 505-947-8222
mgonzales@envirotech-inc.com

Envirotech Web Address: www.envirotech-inc.com

Table of Contents

Title Page	1
Cover Page	2
Table of Contents	3
Sample Summary	4
Sample Data	5
SS10	5
SS11	6
SS12	7
SS13	8
SS14	9
SS15	10
SS16	11
QC Summary Data	12
QC - Volatile Organics by EPA 8021B	12
QC - Nonhalogenated Organics by EPA 8015D - GRO	13
QC - Nonhalogenated Organics by EPA 8015D - DRO/ORO	14
QC - Anions by EPA 300.0/9056A	15
Definitions and Notes	16
Chain of Custody etc.	17

Sample Summary

Enduring Resources, LLC 6300 S Syracuse Way Suite 525 Centennial CO, 80111	Project Name: Good Times P30 ROW Layflat Project Number: 17065-0017 Project Manager: Tim Friesenhahn	Reported: 03/20/26 14:26
--	--	------------------------------------

Client Sample ID	Lab Sample ID	Matrix	Sampled	Received	Container
SS10	E603220-01A	Soil	03/18/26	03/18/26	Glass Jar, 2 oz.
SS11	E603220-02A	Soil	03/18/26	03/18/26	Glass Jar, 2 oz.
SS12	E603220-03A	Soil	03/18/26	03/18/26	Glass Jar, 2 oz.
SS13	E603220-04A	Soil	03/18/26	03/18/26	Glass Jar, 2 oz.
SS14	E603220-05A	Soil	03/18/26	03/18/26	Glass Jar, 2 oz.
SS15	E603220-06A	Soil	03/18/26	03/18/26	Glass Jar, 2 oz.
SS16	E603220-07A	Soil	03/18/26	03/18/26	Glass Jar, 2 oz.



Sample Data

Enduring Resources, LLC 6300 S Syracuse Way Suite 525 Centennial CO, 80111	Project Name: Good Times P30 ROW Layflat Project Number: 17065-0017 Project Manager: Tim Friesenhahn	Reported: 3/20/2026 2:26:56PM
--	--	---

SS10

E603220-01

Analyte	Result	Reporting Limit	Dilution	Prepared	Analyzed	Notes
Volatile Organics by EPA 8021B	mg/kg	mg/kg	Analyst: BA		Batch: 2612117	
Benzene	ND	0.0250	1	03/18/26	03/19/26	
Ethylbenzene	ND	0.0250	1	03/18/26	03/19/26	
Toluene	ND	0.0250	1	03/18/26	03/19/26	
o-Xylene	ND	0.0250	1	03/18/26	03/19/26	
p,m-Xylene	ND	0.0500	1	03/18/26	03/19/26	
Total Xylenes	ND	0.0250	1	03/18/26	03/19/26	
<i>Surrogate: 4-Bromochlorobenzene-PID</i>		91.7 %	70-130	03/18/26	03/19/26	
Nonhalogenated Organics by EPA 8015D - GRO	mg/kg	mg/kg	Analyst: BA		Batch: 2612117	
Gasoline Range Organics (C6-C10)	ND	20.0	1	03/18/26	03/19/26	
<i>Surrogate: 1-Chloro-4-fluorobenzene-FID</i>		93.2 %	70-130	03/18/26	03/19/26	
Nonhalogenated Organics by EPA 8015D - DRO/ORO	mg/kg	mg/kg	Analyst: NV		Batch: 2612116	
Diesel Range Organics (C10-C28)	ND	25.0	1	03/18/26	03/18/26	
Oil Range Organics (C28-C36)	ND	50.0	1	03/18/26	03/18/26	
<i>Surrogate: n-Nonane</i>		103 %	61-141	03/18/26	03/18/26	
Anions by EPA 300.0/9056A	mg/kg	mg/kg	Analyst: DT		Batch: 2612126	
Chloride	ND	20.0	1	03/19/26	03/19/26	



Sample Data

Enduring Resources, LLC 6300 S Syracuse Way Suite 525 Centennial CO, 80111	Project Name: Good Times P30 ROW Layflat Project Number: 17065-0017 Project Manager: Tim Friesenhahn	Reported: 3/20/2026 2:26:56PM
--	--	---

SS11

E603220-02

Analyte	Result	Reporting Limit	Dilution	Prepared	Analyzed	Notes
Volatile Organics by EPA 8021B	mg/kg	mg/kg		Analyst: BA		Batch: 2612117
Benzene	ND	0.0250	1	03/18/26	03/19/26	
Ethylbenzene	ND	0.0250	1	03/18/26	03/19/26	
Toluene	ND	0.0250	1	03/18/26	03/19/26	
o-Xylene	ND	0.0250	1	03/18/26	03/19/26	
p,m-Xylene	ND	0.0500	1	03/18/26	03/19/26	
Total Xylenes	ND	0.0250	1	03/18/26	03/19/26	
<i>Surrogate: 4-Bromochlorobenzene-PID</i>		93.4 %	70-130	03/18/26	03/19/26	
Nonhalogenated Organics by EPA 8015D - GRO	mg/kg	mg/kg		Analyst: BA		Batch: 2612117
Gasoline Range Organics (C6-C10)	ND	20.0	1	03/18/26	03/19/26	
<i>Surrogate: 1-Chloro-4-fluorobenzene-FID</i>		91.6 %	70-130	03/18/26	03/19/26	
Nonhalogenated Organics by EPA 8015D - DRO/ORO	mg/kg	mg/kg		Analyst: NV		Batch: 2612116
Diesel Range Organics (C10-C28)	ND	25.0	1	03/18/26	03/18/26	
Oil Range Organics (C28-C36)	ND	50.0	1	03/18/26	03/18/26	
<i>Surrogate: n-Nonane</i>		106 %	61-141	03/18/26	03/18/26	
Anions by EPA 300.0/9056A	mg/kg	mg/kg		Analyst: DT		Batch: 2612126
Chloride	ND	20.0	1	03/19/26	03/19/26	



Sample Data

Enduring Resources, LLC 6300 S Syracuse Way Suite 525 Centennial CO, 80111	Project Name: Good Times P30 ROW Layflat Project Number: 17065-0017 Project Manager: Tim Friesenhahn	Reported: 3/20/2026 2:26:56PM
--	--	---

SS12

E603220-03

Analyte	Result	Reporting Limit	Dilution	Prepared	Analyzed	Notes
Volatile Organics by EPA 8021B	mg/kg	mg/kg		Analyst: BA		Batch: 2612117
Benzene	ND	0.0250	1	03/18/26	03/19/26	
Ethylbenzene	ND	0.0250	1	03/18/26	03/19/26	
Toluene	ND	0.0250	1	03/18/26	03/19/26	
o-Xylene	ND	0.0250	1	03/18/26	03/19/26	
p,m-Xylene	ND	0.0500	1	03/18/26	03/19/26	
Total Xylenes	ND	0.0250	1	03/18/26	03/19/26	
<i>Surrogate: 4-Bromochlorobenzene-PID</i>		94.3 %	70-130	03/18/26	03/19/26	
Nonhalogenated Organics by EPA 8015D - GRO	mg/kg	mg/kg		Analyst: BA		Batch: 2612117
Gasoline Range Organics (C6-C10)	ND	20.0	1	03/18/26	03/19/26	
<i>Surrogate: 1-Chloro-4-fluorobenzene-FID</i>		94.0 %	70-130	03/18/26	03/19/26	
Nonhalogenated Organics by EPA 8015D - DRO/ORO	mg/kg	mg/kg		Analyst: NV		Batch: 2612116
Diesel Range Organics (C10-C28)	ND	25.0	1	03/18/26	03/18/26	
Oil Range Organics (C28-C36)	ND	50.0	1	03/18/26	03/18/26	
<i>Surrogate: n-Nonane</i>		105 %	61-141	03/18/26	03/18/26	
Anions by EPA 300.0/9056A	mg/kg	mg/kg		Analyst: DT		Batch: 2612126
Chloride	ND	20.0	1	03/19/26	03/19/26	



Sample Data

Enduring Resources, LLC 6300 S Syracuse Way Suite 525 Centennial CO, 80111	Project Name: Good Times P30 ROW Layflat Project Number: 17065-0017 Project Manager: Tim Friesenhahn	Reported: 3/20/2026 2:26:56PM
--	--	---

SS13

E603220-04

Analyte	Result	Reporting Limit	Dilution	Prepared	Analyzed	Notes
Volatile Organics by EPA 8021B	mg/kg	mg/kg	Analyst: BA		Batch: 2612117	
Benzene	ND	0.0250	1	03/18/26	03/19/26	
Ethylbenzene	ND	0.0250	1	03/18/26	03/19/26	
Toluene	ND	0.0250	1	03/18/26	03/19/26	
o-Xylene	ND	0.0250	1	03/18/26	03/19/26	
p,m-Xylene	ND	0.0500	1	03/18/26	03/19/26	
Total Xylenes	ND	0.0250	1	03/18/26	03/19/26	
<i>Surrogate: 4-Bromochlorobenzene-PID</i>		98.5 %	70-130	03/18/26	03/19/26	
Nonhalogenated Organics by EPA 8015D - GRO	mg/kg	mg/kg	Analyst: BA		Batch: 2612117	
Gasoline Range Organics (C6-C10)	ND	20.0	1	03/18/26	03/19/26	
<i>Surrogate: 1-Chloro-4-fluorobenzene-FID</i>		94.4 %	70-130	03/18/26	03/19/26	
Nonhalogenated Organics by EPA 8015D - DRO/ORO	mg/kg	mg/kg	Analyst: NV		Batch: 2612116	
Diesel Range Organics (C10-C28)	ND	25.0	1	03/18/26	03/18/26	
Oil Range Organics (C28-C36)	ND	50.0	1	03/18/26	03/18/26	
<i>Surrogate: n-Nonane</i>		105 %	61-141	03/18/26	03/18/26	
Anions by EPA 300.0/9056A	mg/kg	mg/kg	Analyst: DT		Batch: 2612126	
Chloride	ND	20.0	1	03/19/26	03/19/26	



Sample Data

Enduring Resources, LLC 6300 S Syracuse Way Suite 525 Centennial CO, 80111	Project Name: Good Times P30 ROW Layflat Project Number: 17065-0017 Project Manager: Tim Friesenhahn	Reported: 3/20/2026 2:26:56PM
--	--	---

SS14

E603220-05

Analyte	Result	Reporting Limit	Dilution	Prepared	Analyzed	Notes
Volatile Organics by EPA 8021B	mg/kg	mg/kg		Analyst: BA		Batch: 2612117
Benzene	ND	0.0250	1	03/18/26	03/19/26	
Ethylbenzene	ND	0.0250	1	03/18/26	03/19/26	
Toluene	ND	0.0250	1	03/18/26	03/19/26	
o-Xylene	ND	0.0250	1	03/18/26	03/19/26	
p,m-Xylene	ND	0.0500	1	03/18/26	03/19/26	
Total Xylenes	ND	0.0250	1	03/18/26	03/19/26	
<i>Surrogate: 4-Bromochlorobenzene-PID</i>		90.9 %	70-130	03/18/26	03/19/26	
Nonhalogenated Organics by EPA 8015D - GRO	mg/kg	mg/kg		Analyst: BA		Batch: 2612117
Gasoline Range Organics (C6-C10)	ND	20.0	1	03/18/26	03/19/26	
<i>Surrogate: 1-Chloro-4-fluorobenzene-FID</i>		93.5 %	70-130	03/18/26	03/19/26	
Nonhalogenated Organics by EPA 8015D - DRO/ORO	mg/kg	mg/kg		Analyst: NV		Batch: 2612116
Diesel Range Organics (C10-C28)	ND	25.0	1	03/18/26	03/18/26	
Oil Range Organics (C28-C36)	ND	50.0	1	03/18/26	03/18/26	
<i>Surrogate: n-Nonane</i>		105 %	61-141	03/18/26	03/18/26	
Anions by EPA 300.0/9056A	mg/kg	mg/kg		Analyst: DT		Batch: 2612126
Chloride	ND	20.0	1	03/19/26	03/19/26	



Sample Data

Enduring Resources, LLC 6300 S Syracuse Way Suite 525 Centennial CO, 80111	Project Name: Good Times P30 ROW Layflat Project Number: 17065-0017 Project Manager: Tim Friesenhahn	Reported: 3/20/2026 2:26:56PM
--	--	---

SS15

E603220-06

Analyte	Result	Reporting Limit	Dilution	Prepared	Analyzed	Notes
Volatile Organics by EPA 8021B	mg/kg	mg/kg		Analyst: BA		Batch: 2612117
Benzene	ND	0.0250	1	03/18/26	03/19/26	
Ethylbenzene	ND	0.0250	1	03/18/26	03/19/26	
Toluene	ND	0.0250	1	03/18/26	03/19/26	
o-Xylene	ND	0.0250	1	03/18/26	03/19/26	
p,m-Xylene	ND	0.0500	1	03/18/26	03/19/26	
Total Xylenes	ND	0.0250	1	03/18/26	03/19/26	
<i>Surrogate: 4-Bromochlorobenzene-PID</i>		92.6 %	70-130	03/18/26	03/19/26	
Nonhalogenated Organics by EPA 8015D - GRO	mg/kg	mg/kg		Analyst: BA		Batch: 2612117
Gasoline Range Organics (C6-C10)	ND	20.0	1	03/18/26	03/19/26	
<i>Surrogate: 1-Chloro-4-fluorobenzene-FID</i>		94.5 %	70-130	03/18/26	03/19/26	
Nonhalogenated Organics by EPA 8015D - DRO/ORO	mg/kg	mg/kg		Analyst: NV		Batch: 2612116
Diesel Range Organics (C10-C28)	ND	25.0	1	03/18/26	03/18/26	
Oil Range Organics (C28-C36)	ND	50.0	1	03/18/26	03/18/26	
<i>Surrogate: n-Nonane</i>		106 %	61-141	03/18/26	03/18/26	
Anions by EPA 300.0/9056A	mg/kg	mg/kg		Analyst: DT		Batch: 2612126
Chloride	ND	20.0	1	03/19/26	03/19/26	



Sample Data

Enduring Resources, LLC 6300 S Syracuse Way Suite 525 Centennial CO, 80111	Project Name: Good Times P30 ROW Layflat Project Number: 17065-0017 Project Manager: Tim Friesenhahn	Reported: 3/20/2026 2:26:56PM
--	--	---

SS16

E603220-07

Analyte	Result	Reporting Limit	Dilution	Prepared	Analyzed	Notes
Volatile Organics by EPA 8021B	mg/kg	mg/kg		Analyst: BA		Batch: 2612117
Benzene	ND	0.0250	1	03/18/26	03/19/26	
Ethylbenzene	ND	0.0250	1	03/18/26	03/19/26	
Toluene	ND	0.0250	1	03/18/26	03/19/26	
o-Xylene	ND	0.0250	1	03/18/26	03/19/26	
p,m-Xylene	ND	0.0500	1	03/18/26	03/19/26	
Total Xylenes	ND	0.0250	1	03/18/26	03/19/26	
<i>Surrogate: 4-Bromochlorobenzene-PID</i>		93.1 %	70-130	03/18/26	03/19/26	
Nonhalogenated Organics by EPA 8015D - GRO	mg/kg	mg/kg		Analyst: BA		Batch: 2612117
Gasoline Range Organics (C6-C10)	ND	20.0	1	03/18/26	03/19/26	
<i>Surrogate: 1-Chloro-4-fluorobenzene-FID</i>		91.0 %	70-130	03/18/26	03/19/26	
Nonhalogenated Organics by EPA 8015D - DRO/ORO	mg/kg	mg/kg		Analyst: NV		Batch: 2612116
Diesel Range Organics (C10-C28)	ND	25.0	1	03/18/26	03/18/26	
Oil Range Organics (C28-C36)	ND	50.0	1	03/18/26	03/18/26	
<i>Surrogate: n-Nonane</i>		105 %	61-141	03/18/26	03/18/26	
Anions by EPA 300.0/9056A	mg/kg	mg/kg		Analyst: DT		Batch: 2612126
Chloride	ND	20.0	1	03/19/26	03/19/26	



QC Summary Data

Enduring Resources, LLC 6300 S Syracuse Way Suite 525 Centennial CO, 80111	Project Name: Good Times P30 ROW Layflat Project Number: 17065-0017 Project Manager: Tim Friesenhahn	Reported: 3/20/2026 2:26:56PM
--	--	---

Volatile Organics by EPA 8021B

Analyst: BA

Analyte	Result mg/kg	Reporting Limit mg/kg	Spike Level mg/kg	Source Result mg/kg	Rec % %	Rec Limits %	RPD %	RPD Limit %	Notes
---------	-----------------	-----------------------------	-------------------------	---------------------------	---------------	--------------------	----------	-------------------	-------

Blank (2612117-BLK1)

Prepared: 03/18/26 Analyzed: 03/19/26

Benzene	ND	0.0250							
Ethylbenzene	ND	0.0250							
Toluene	ND	0.0250							
o-Xylene	ND	0.0250							
p,m-Xylene	ND	0.0500							
Total Xylenes	ND	0.0250							
Surrogate: 4-Bromochlorobenzene-PID	7.31		8.00		91.4	70-130			

LCS (2612117-BS1)

Prepared: 03/18/26 Analyzed: 03/19/26

Benzene	4.10	0.0250	5.00		81.9	70-130			
Ethylbenzene	3.88	0.0250	5.00		77.5	70-130			
Toluene	3.99	0.0250	5.00		79.9	70-130			
o-Xylene	3.86	0.0250	5.00		77.1	70-130			
p,m-Xylene	7.91	0.0500	10.0		79.1	70-130			
Total Xylenes	11.8	0.0250	15.0		78.4	70-130			
Surrogate: 4-Bromochlorobenzene-PID	7.71		8.00		96.3	70-130			

Matrix Spike (2612117-MS1)

Source: E603220-04

Prepared: 03/18/26 Analyzed: 03/19/26

Benzene	4.67	0.0250	5.00	ND	93.4	70-130			
Ethylbenzene	4.39	0.0250	5.00	ND	87.9	70-130			
Toluene	4.54	0.0250	5.00	ND	90.8	70-130			
o-Xylene	4.41	0.0250	5.00	ND	88.3	70-130			
p,m-Xylene	8.94	0.0500	10.0	ND	89.4	70-130			
Total Xylenes	13.4	0.0250	15.0	ND	89.0	70-130			
Surrogate: 4-Bromochlorobenzene-PID	7.81		8.00		97.6	70-130			

Matrix Spike Dup (2612117-MSD1)

Source: E603220-04

Prepared: 03/18/26 Analyzed: 03/20/26

Benzene	5.12	0.0250	5.00	ND	102	70-130	9.23	27	
Ethylbenzene	4.86	0.0250	5.00	ND	97.1	70-130	10.0	26	
Toluene	5.00	0.0250	5.00	ND	100	70-130	9.67	20	
o-Xylene	4.86	0.0250	5.00	ND	97.3	70-130	9.71	25	
p,m-Xylene	9.88	0.0500	10.0	ND	98.8	70-130	9.91	23	
Total Xylenes	14.7	0.0250	15.0	ND	98.3	70-130	9.84	26	
Surrogate: 4-Bromochlorobenzene-PID	7.99		8.00		99.9	70-130			



QC Summary Data

Enduring Resources, LLC 6300 S Syracuse Way Suite 525 Centennial CO, 80111	Project Name: Good Times P30 ROW Layflat Project Number: 17065-0017 Project Manager: Tim Friesenhahn	Reported: 3/20/2026 2:26:56PM
--	--	---

Nonhalogenated Organics by EPA 8015D - GRO

Analyst: BA

Analyte	Result mg/kg	Reporting Limit mg/kg	Spike Level mg/kg	Source Result mg/kg	Rec % %	Rec Limits %	RPD %	RPD Limit %	Notes
---------	-----------------	-----------------------------	-------------------------	---------------------------	---------------	--------------------	----------	-------------------	-------

Blank (2612117-BLK1)

Prepared: 03/18/26 Analyzed: 03/19/26

Gasoline Range Organics (C6-C10)	ND	20.0							
Surrogate: 1-Chloro-4-fluorobenzene-FID	7.71		8.00		96.3	70-130			

LCS (2612117-BS2)

Prepared: 03/18/26 Analyzed: 03/19/26

Gasoline Range Organics (C6-C10)	36.8	20.0	50.0		73.5	70-130			
Surrogate: 1-Chloro-4-fluorobenzene-FID	7.80		8.00		97.5	70-130			

Matrix Spike (2612117-MS2)

Source: E603220-04

Prepared: 03/18/26 Analyzed: 03/19/26

Gasoline Range Organics (C6-C10)	45.1	20.0	50.0	ND	90.2	70-130			
Surrogate: 1-Chloro-4-fluorobenzene-FID	7.80		8.00		97.5	70-130			

Matrix Spike Dup (2612117-MSD2)

Source: E603220-04

Prepared: 03/18/26 Analyzed: 03/19/26

Gasoline Range Organics (C6-C10)	50.3	20.0	50.0	ND	101	70-130	11.0	20	
Surrogate: 1-Chloro-4-fluorobenzene-FID	7.81		8.00		97.6	70-130			



QC Summary Data

Enduring Resources, LLC 6300 S Syracuse Way Suite 525 Centennial CO, 80111	Project Name: Good Times P30 ROW Layflat Project Number: 17065-0017 Project Manager: Tim Friesenhahn	Reported: 3/20/2026 2:26:56PM
--	--	---

Nonhalogenated Organics by EPA 8015D - DRO/ORO

Analyst: NV

Analyte	Result mg/kg	Reporting Limit mg/kg	Spike Level mg/kg	Source Result mg/kg	Rec % %	Rec Limits %	RPD %	RPD Limit %	Notes
---------	-----------------	-----------------------------	-------------------------	---------------------------	---------------	--------------------	----------	-------------------	-------

Blank (2612116-BLK1)

Prepared: 03/18/26 Analyzed: 03/18/26

Oil Range Organics (C28-C36)	ND	50.0							
Surrogate: n-Nonane	53.2		50.0		106	61-141			

LCS (2612116-BS1)

Prepared: 03/18/26 Analyzed: 03/18/26

Diesel Range Organics (C10-C28)	260	25.0	250		104	66-144			
Surrogate: n-Nonane	52.8		50.0		106	61-141			

Matrix Spike (2612116-MS1)

Source: E603215-05

Prepared: 03/18/26 Analyzed: 03/18/26

Diesel Range Organics (C10-C28)	269	25.0	250	ND	108	56-156			
Surrogate: n-Nonane	52.5		50.0		105	61-141			

Matrix Spike Dup (2612116-MSD1)

Source: E603215-05

Prepared: 03/18/26 Analyzed: 03/18/26

Diesel Range Organics (C10-C28)	278	25.0	250	ND	111	56-156	3.48	20	
Surrogate: n-Nonane	53.8		50.0		108	61-141			



QC Summary Data

Enduring Resources, LLC 6300 S Syracuse Way Suite 525 Centennial CO, 80111	Project Name: Good Times P30 ROW Layflat Project Number: 17065-0017 Project Manager: Tim Friesenhahn	Reported: 3/20/2026 2:26:56PM
--	--	---

Anions by EPA 300.0/9056A

Analyst: DT

Analyte	Result mg/kg	Reporting Limit mg/kg	Spike Level mg/kg	Source Result mg/kg	Rec %	Rec Limits %	RPD %	RPD Limit %	Notes
---------	-----------------	-----------------------------	-------------------------	---------------------------	----------	--------------------	----------	-------------------	-------

Blank (2612126-BLK1)

Prepared: 03/19/26 Analyzed: 03/19/26

Chloride	ND	20.0							
----------	----	------	--	--	--	--	--	--	--

LCS (2612126-BS1)

Prepared: 03/19/26 Analyzed: 03/19/26

Chloride	248	20.0	250		99.1	90-110			
----------	-----	------	-----	--	------	--------	--	--	--

Matrix Spike (2612126-MS1)

Source: E603230-06

Prepared: 03/19/26 Analyzed: 03/19/26

Chloride	248	20.0	250	ND	99.1	80-120			
----------	-----	------	-----	----	------	--------	--	--	--

Matrix Spike Dup (2612126-MSD1)

Source: E603230-06

Prepared: 03/19/26 Analyzed: 03/19/26

Chloride	248	20.0	250	ND	99.2	80-120	0.0859	20	
----------	-----	------	-----	----	------	--------	--------	----	--

QC Summary Report Comment:

Calculations are based off of the raw (non-rounded) data. However, for reporting purposes all QC data is rounded to three significant figures. Therefore, hand calculated values may differ slightly.



Definitions and Notes

Enduring Resources, LLC 6300 S Syracuse Way Suite 525 Centennial CO, 80111	Project Name: Good Times P30 ROW Layflat Project Number: 17065-0017 Project Manager: Tim Friesenhahn	Reported: 03/20/26 14:26
--	--	------------------------------------

ND Analyte NOT DETECTED at or above the reporting limit

NR Not Reported

RPD Relative Percent Difference

DNI Did Not Ignite

DNR Did not react with the addition of acid or base.

Note (1): Methods marked with ** are non-accredited methods.

Note (2): Soil data is reported on an "as received" weight basis, unless reported otherwise.





Chain of Custody
POName # Good Times P30 Row Layflat

Client Information				Invoice Information				Lab Use Only				TAT				State							
Client: <u>Enduring Resources</u>				Company: _____				Lab WO# <u>E1003220</u>				Job Number <u>17045-0017</u>				1D <input checked="" type="checkbox"/> 2D <input type="checkbox"/> 3D <input type="checkbox"/> Std <input type="checkbox"/>				NM <input type="checkbox"/> CO <input type="checkbox"/> UT <input type="checkbox"/> TX <input type="checkbox"/>			
Project Name: _____				Address: _____				City, State, Zip: _____				Phone: _____				Miscellaneous: <u>Attn. Completions</u>							
Project Manager: <u>Attn. Completions</u>				City, State, Zip: _____				Email: _____				Analysis and Method				EPA Program							
Address: <u>TTM</u>				City, State, Zip: _____				Phone: _____				Email: _____				SDWA <input type="checkbox"/> CWA <input type="checkbox"/> RCRA <input type="checkbox"/>							
City, State, Zip: _____				Phone: _____				Email: _____				Compliance Y or N				PWSID # _____							
Sample Information				Sample ID				Field Filter				Lab Number				Sample Temp				Remarks			
Time Sampled	Date Sampled	Matrix	No. of Containers	Sample ID				Field	Filter	Lab Number				Sample Temp				Remarks					
1210	3-18-26	S	1	SS10						1				0.5									
1212				SS11						2				2.8									
1214				SS12						3				3.0									
1216				SS13						4				2.6									
1218				SS14						5				2.4									
1220				SS15						6				2.2									
1220				SS16						7				2.0									
Additional Instructions: <u>cc: skahn shyde dbruns gpalesse @ensolum.com</u>																							
I, (field sampler), attest to the validity and authenticity of this sample. I am aware that tampering with or intentionally mislabeling the sample location, date or time of collection is considered fraud and may be grounds for legal action.																							
Sampled by: <u>Bunny Purnas</u>																							
Relinquished by: (Signature) <u>[Signature]</u>				Date <u>3-18-26</u>				Time <u>1417</u>				Received by: (Signature) <u>[Signature]</u>				Date <u>3-18-26</u>				Time <u>1417</u>			
Relinquished by: (Signature)				Date				Time				Received by: (Signature)				Date				Time			
Relinquished by: (Signature)				Date				Time				Received by: (Signature)				Date				Time			
Relinquished by: (Signature)				Date				Time				Received by: (Signature)				Date				Time			
Relinquished by: (Signature)				Date				Time				Received by: (Signature)				Date				Time			
Sample Matrix: S - Soil, Sd - Solid, Sg - Sludge, A - Aqueous, O - Other _____																							
Container Type: g - glass, p - poly/plastic, ag - amber glass, v - VOA _____																							
Note: Samples are discarded 14 days after results are reported unless other arrangements are made. Hazardous samples will be returned to client or disposed of at the client expense. The report for the analysis of the above samples is applicable only to those samples received by the laboratory with this COC. The liability of the laboratory is limited to the amount paid for on the report.																							

Envirotech Analytical Laboratory

Printed: 3/18/2026 2:50:47PM

Sample Receipt Checklist (SRC)

Instructions: Please take note of any NO checkmarks.

If we receive no response concerning these items within 24 hours of the date of this notice, all the samples will be analyzed as requested.

Client:	Enduring Resources, LLC	Date Received:	03/18/26 14:17	Work Order ID:	E603220
Phone:	(303) 573-1222	Date Logged In:	03/18/26 14:46	Logged In By:	Caitlin Mars
Email:	tfriesenhahn@enduringresources.com	Due Date:	03/19/26 17:00 (1 day TAT)		

Chain of Custody (COC)

- 1. Does the sample ID match the COC? Yes
- 2. Does the number of samples per sampling site location match the COC? Yes
- 3. Were samples dropped off by client or carrier? Yes
- 4. Was the COC complete, i.e., signatures, dates/times, requested analyses? Yes
- 5. Were all samples received within holding time? Yes

Carrier: Danny Burns

Note: Analysis, such as pH which should be conducted in the field, i.e, 15 minute hold time, are not included in this discussion.

Comments/Resolution

Sample Turn Around Time (TAT)

- 6. Did the COC indicate standard TAT, or Expedited TAT? Yes

Sample Cooler

- 7. Was a sample cooler received? Yes
- 8. If yes, was cooler received in good condition? Yes
- 9. Was the sample(s) received intact, i.e., not broken? Yes
- 10. Were custody/security seals present? No
- 11. If yes, were custody/security seals intact? NA
- 12. Was the sample received on ice? Yes

Note: Thermal preservation is not required, if samples are received within 15 minutes of sampling

- 13. See COC for individual sample temps. Samples outside of 0°C-6°C will be recorded in comments.

Sample Container

- 14. Are aqueous VOC samples present? No
- 15. Are VOC samples collected in VOA Vials? NA
- 16. Is the head space less than 6-8 mm (pea sized or less)? NA
- 17. Was a trip blank (TB) included for VOC analyses? NA
- 18. Are non-VOC samples collected in the correct containers? Yes
- 19. Is the appropriate volume/weight or number of sample containers collected? Yes

Field Label

- 20. Were field sample labels filled out with the minimum information:
 - Sample ID? Yes
 - Date/Time Collected? Yes
 - Collectors name? No

Sample Preservation

- 21. Does the COC or field labels indicate the samples were preserved? No
- 22. Are sample(s) correctly preserved? NA
- 24. Is lab filtration required and/or requested for dissolved metals? No

Multiphase Sample Matrix

- 26. Does the sample have more than one phase, i.e., multiphase? No
- 27. If yes, does the COC specify which phase(s) is to be analyzed? NA

Subcontract Laboratory

- 28. Are samples required to get sent to a subcontract laboratory? No
- 29. Was a subcontract laboratory specified by the client and if so who? NA Subcontract Lab: NA

Client Instruction

Signature of client authorizing changes to the COC or sample disposition.

Date



envirotech Inc.



ATTACHMENT 3
Photographic Log



Photographic Log
Enduring Resources, LLC
Good Times P30 ROW Layflat Release
San Juan County, New Mexico



Photograph: 1 Date: 2/26/2026
Description: Wet soil from the layflat release
View: North



Photograph: 2 Date: 2/26/2026
Description: MPLX pipeline trench
View: East



Photograph: 3 Date: 3/6/2026
Description: Initial sampling activities to assess soil conditions, sampling areas SS01 through SS06
View: North



Photograph: 4 Date: 3/6/2026
Description: Pipeline trench and sampling areas SS07 through SS09
View: North



Photographic Log
Enduring Resources, LLC
Good Times P30 ROW Layflat Release
San Juan County, New Mexico

North East

☉ 26°NE (T) LAT: 36.274029 LON: -107.825340 ±16ft ▲ 6835ft



Photograph: 5 Date: 3/18/2026
Description: Additional excavation to remove impacted soil in sample areas SS01 through SS06
View: Northeast

West

☉ 275°W (T) LAT: 36.274170 LON: -107.825193 ±6ft ▲ 6840ft



Photograph: 6 Date: 3/18/2026
Description: Sampling the final excavation extent
View: West

South

☉ 187°S (T) LAT: 36.274248 LON: -107.825302 ±13ft ▲ 6839ft



Photograph: 7 Date: 3/18/2026
Description: Sampling the final excavation extent
View: South

West

☉ 287°W (T) LAT: 36.274048 LON: -107.825126 ±6ft ▲ 6838ft



Photograph: 8 Date: 3/18/2026
Description: Sampling the final excavation extent
View: West



ATTACHMENT 2
Photographic Log



Photographic Log
Enduring Resources, LLC
Good Times P30 ROW Layflat Release
San Juan County, New Mexico



Photograph: 1 Date: 3/6/2026
Description: View of the MPLX LP pipeline trench. The pipeline across the floor limits the effectiveness of a backhoe.
View: Northwest

Photograph: 2 Date: 2/26/2026
Description: MPLX LP pipeline trench. Observe the narrow width of trench.
View: East



Photograph: 3 Date: 3/6/2026
Description: MPLX LP pipeline trench. The pipeline across the floor limits the effectiveness of a backhoe.
View: Northwest

Photograph: 4 Date: 3/18/2026
Description: MPLX LP pipeline trench. Observe the narrow width of trench.
View: Southeast



Photographic Log
Enduring Resources, LLC
Good Times P30 ROW Layflat Release
San Juan County, New Mexico



Photograph: 5 Date: 3/18/2026
Description: Final excavation extent. Observe the shallow and non-distinct sidewalls.
View: North



Photograph: 6 Date: 3/18/2026
Description: Final excavation extent. Observe the shallow and non-distinct sidewalls.
View: West



Photograph: 7 Date: 3/18/2026
Description: Final excavation extent. Observe the shallow and non-distinct sidewalls.
View: South



Photograph: 8 Date: 3/18/2026
Description: Final excavation extent. Observe the shallow and non-distinct sidewalls.
View: Southwest

Sante Fe Main Office
Phone: (505) 476-3441

General Information
Phone: (505) 629-6116

Online Phone Directory
<https://www.emnrd.nm.gov/ocd/contact-us>

State of New Mexico
Energy, Minerals and Natural Resources
Oil Conservation Division
1220 S. St Francis Dr.
Santa Fe, NM 87505

QUESTIONS

Action 588563

QUESTIONS

Operator: DJR OPERATING, LLC 200 Energy Court Farmington, NM 87401	OGRID: 371838
	Action Number: 588563
	Action Type: [C-141] Remediation Closure Request C-141 (C-141-v-Closure)

QUESTIONS

Prerequisites	
Incident ID (n#)	nAPP2606239962
Incident Name	NAPP2606239962 GOOD TIMES P30 LAYFLAT ROW @ A-31-24N-09W
Incident Type	Produced Water Release
Incident Status	Remediation Closure Report Received

Location of Release Source	
<i>Please answer all the questions in this group.</i>	
Site Name	GOOD TIMES P30 LAYFLAT ROW
Date Release Discovered	02/25/2026
Surface Owner	Federal

Incident Details	
<i>Please answer all the questions in this group.</i>	
Incident Type	Produced Water Release
Did this release result in a fire or is the result of a fire	No
Did this release result in any injuries	No
Has this release reached or does it have a reasonable probability of reaching a watercourse	No
Has this release endangered or does it have a reasonable probability of endangering public health	No
Has this release substantially damaged or will it substantially damage property or the environment	No
Is this release of a volume that is or may with reasonable probability be detrimental to fresh water	No

Nature and Volume of Release	
<i>Material(s) released, please answer all that apply below. Any calculations or specific justifications for the volumes provided should be attached to the follow-up C-141 submission.</i>	
Crude Oil Released (bbls) Details	Not answered.
Produced Water Released (bbls) Details	Cause: Equipment Failure Pipeline (Any) Produced Water Released: 7 BBL Recovered: 0 BBL Lost: 7 BBL.
Is the concentration of chloride in the produced water >10,000 mg/l	No
Condensate Released (bbls) Details	Not answered.
Natural Gas Vented (Mcf) Details	Not answered.
Natural Gas Flared (Mcf) Details	Not answered.
Other Released Details	Not answered.
Are there additional details for the questions above (i.e. any answer containing Other, Specify, Unknown, and/or Fire, or any negative lost amounts)	Not answered.

Sante Fe Main Office
Phone: (505) 476-3441

General Information
Phone: (505) 629-6116

Online Phone Directory
<https://www.emnrd.nm.gov/ocd/contact-us>

State of New Mexico
Energy, Minerals and Natural Resources
Oil Conservation Division
1220 S. St Francis Dr.
Santa Fe, NM 87505

QUESTIONS, Page 2

Action 588563

QUESTIONS (continued)

Operator: DJR OPERATING, LLC 200 Energy Court Farmington, NM 87401	OGRID: 371838
	Action Number: 588563
	Action Type: [C-141] Remediation Closure Request C-141 (C-141-v-Closure)

QUESTIONS

Nature and Volume of Release (continued)	
Is this a gas only submission (i.e. only significant Mcf values reported)	No, according to supplied volumes this does not appear to be a "gas only" report.
Was this a major release as defined by Subsection A of 19.15.29.7 NMAC	No
Reasons why this would be considered a submission for a notification of a major release	<i>Unavailable.</i>
<i>With the implementation of the 19.15.27 NMAC (05/25/2021), venting and/or flaring of natural gas (i.e. gas only) are to be submitted on the C-129 form.</i>	

Initial Response

The responsible party must undertake the following actions immediately unless they could create a safety hazard that would result in injury.

The source of the release has been stopped	True
The impacted area has been secured to protect human health and the environment	True
Released materials have been contained via the use of berms or dikes, absorbent pads, or other containment devices	True
All free liquids and recoverable materials have been removed and managed appropriately	True
If all the actions described above have not been undertaken, explain why	<i>Not answered.</i>

Per Paragraph (4) of Subsection B of 19.15.29.8 NMAC the responsible party may commence remediation immediately after discovery of a release. If remediation has begun, please prepare and attach a narrative of actions to date in the follow-up C-141 submission. If remedial efforts have been successfully completed or if the release occurred within a lined containment area (see Subparagraph (a) of Paragraph (5) of Subsection A of 19.15.29.11 NMAC), please prepare and attach all information needed for closure evaluation in the follow-up C-141 submission.

I hereby certify that the information given above is true and complete to the best of my knowledge and understand that pursuant to OCD rules and regulations all operators are required to report and/or file certain release notifications and perform corrective actions for releases which may endanger public health or the environment. The acceptance of a C-141 report by the OCD does not relieve the operator of liability should their operations have failed to adequately investigate and remediate contamination that pose a threat to groundwater, surface water, human health or the environment. In addition, OCD acceptance of a C-141 report does not relieve the operator of responsibility for compliance with any other federal, state, or local laws and/or regulations.

I hereby agree and sign off to the above statement	Name: Heather Huntington Title: Permitting Tech Email: hhuntington@enduringresources.com Date: 05/27/2026
--	---

Sante Fe Main Office
Phone: (505) 476-3441

General Information
Phone: (505) 629-6116

Online Phone Directory
<https://www.emnrd.nm.gov/ocd/contact-us>

State of New Mexico
Energy, Minerals and Natural Resources
Oil Conservation Division
1220 S. St Francis Dr.
Santa Fe, NM 87505

QUESTIONS, Page 3

Action 588563

QUESTIONS (continued)

Operator: DJR OPERATING, LLC 200 Energy Court Farmington, NM 87401	OGRID: 371838
	Action Number: 588563
	Action Type: [C-141] Remediation Closure Request C-141 (C-141-v-Closure)

QUESTIONS**Site Characterization**

Please answer all the questions in this group (only required when seeking remediation plan approval and beyond). This information must be provided to the appropriate district office no later than 90 days after the release discovery date.

What is the shallowest depth to groundwater beneath the area affected by the release in feet below ground surface (ft bgs)	Between 100 and 500 (ft.)
What method was used to determine the depth to ground water	U.S. Geological Survey
Did this release impact groundwater or surface water	No
What is the minimum distance, between the closest lateral extents of the release and the following surface areas:	
A continuously flowing watercourse or any other significant watercourse	Between 1000 (ft.) and ½ (mi.)
Any lakebed, sinkhole, or playa lake (measured from the ordinary high-water mark)	Between 1000 (ft.) and ½ (mi.)
An occupied permanent residence, school, hospital, institution, or church	Between 1 and 5 (mi.)
A spring or a private domestic fresh water well used by less than five households for domestic or stock watering purposes	Between 1 and 5 (mi.)
Any other fresh water well or spring	Between 1 and 5 (mi.)
Incorporated municipal boundaries or a defined municipal fresh water well field	Between 1 and 5 (mi.)
A wetland	Between 1000 (ft.) and ½ (mi.)
A subsurface mine	Greater than 5 (mi.)
An (non-karst) unstable area	Greater than 5 (mi.)
Categorize the risk of this well / site being in a karst geology	None
A 100-year floodplain	Between 1 and 5 (mi.)
Did the release impact areas not on an exploration, development, production, or storage site	Yes

Remediation Plan

Please answer all the questions that apply or are indicated. This information must be provided to the appropriate district office no later than 90 days after the release discovery date.

Requesting a remediation plan approval with this submission	Yes
<i>Attach a comprehensive report demonstrating the lateral and vertical extents of soil contamination associated with the release have been determined, pursuant to 19.15.29.11 NMAC and 19.15.29.13 NMAC.</i>	
Have the lateral and vertical extents of contamination been fully delineated	Yes
Was this release entirely contained within a lined containment area	No

Soil Contamination Sampling: (Provide the highest observable value for each, in milligrams per kilograms.)

Chloride (EPA 300.0 or SM4500 Cl B)	4650
TPH (GRO+DRO+MRO) (EPA SW-846 Method 8015M)	49
GRO+DRO (EPA SW-846 Method 8015M)	33.7
BTEX (EPA SW-846 Method 8021B or 8260B)	0.1
Benzene (EPA SW-846 Method 8021B or 8260B)	0.1

Per Subsection B of 19.15.29.11 NMAC unless the site characterization report includes completed efforts at remediation, the report must include a proposed remediation plan in accordance with 19.15.29.12 NMAC, which includes the anticipated timelines for beginning and completing the remediation.

On what estimated date will the remediation commence	03/06/2026
On what date will (or did) the final sampling or liner inspection occur	03/18/2026
On what date will (or was) the remediation complete(d)	03/23/2026
What is the estimated surface area (in square feet) that will be reclaimed	1226
What is the estimated volume (in cubic yards) that will be reclaimed	128
What is the estimated surface area (in square feet) that will be remediated	1226
What is the estimated volume (in cubic yards) that will be remediated	128

These estimated dates and measurements are recognized to be the best guess or calculation at the time of submission and may (be) change(d) over time as more remediation efforts are completed.

The OCD recognizes that proposed remediation measures may have to be minimally adjusted in accordance with the physical realities encountered during remediation. If the responsible party has any need to significantly deviate from the remediation plan proposed, then it should consult with the division to determine if another remediation plan submission is required.

Sante Fe Main Office
Phone: (505) 476-3441

General Information
Phone: (505) 629-6116

Online Phone Directory
<https://www.emnrd.nm.gov/ocd/contact-us>

State of New Mexico
Energy, Minerals and Natural Resources
Oil Conservation Division
1220 S. St Francis Dr.
Santa Fe, NM 87505

QUESTIONS, Page 4

Action 588563

QUESTIONS (continued)

Operator: DJR OPERATING, LLC 200 Energy Court Farmington, NM 87401	OGRID: 371838
	Action Number: 588563
	Action Type: [C-141] Remediation Closure Request C-141 (C-141-v-Closure)

QUESTIONS

Remediation Plan (continued)

Please answer all the questions that apply or are indicated. This information must be provided to the appropriate district office no later than 90 days after the release discovery date.

This remediation will (or is expected to) utilize the following processes to remediate / reduce contaminants:

(Select all answers below that apply.)

(Ex Situ) Excavation and off-site disposal (i.e. dig and haul, hydrovac, etc.)	Yes
Which OCD approved facility will be used for off-site disposal	FEEM0112336756 ENVIROTECH LANDFARM #2
OR which OCD approved well (API) will be used for off-site disposal	Not answered.
OR is the off-site disposal site, to be used, out-of-state	Not answered.
OR is the off-site disposal site, to be used, an NMED facility	Not answered.
(Ex Situ) Excavation and on-site remediation (i.e. On-Site Land Farms)	Not answered.
(In Situ) Soil Vapor Extraction	Not answered.
(In Situ) Chemical processing (i.e. Soil Shredding, Potassium Permanganate, etc.)	Not answered.
(In Situ) Biological processing (i.e. Microbes / Fertilizer, etc.)	Not answered.
(In Situ) Physical processing (i.e. Soil Washing, Gypsum, Disking, etc.)	Not answered.
Ground Water Abatement pursuant to 19.15.30 NMAC	Not answered.
OTHER (Non-listed remedial process)	Not answered.

Per Subsection B of 19.15.29.11 NMAC unless the site characterization report includes completed efforts at remediation, the report must include a proposed remediation plan in accordance with 19.15.29.12 NMAC, which includes the anticipated timelines for beginning and completing the remediation.

I hereby certify that the information given above is true and complete to the best of my knowledge and understand that pursuant to OCD rules and regulations all operators are required to report and/or file certain release notifications and perform corrective actions for releases which may endanger public health or the environment. The acceptance of a C-141 report by the OCD does not relieve the operator of liability should their operations have failed to adequately investigate and remediate contamination that pose a threat to groundwater, surface water, human health or the environment. In addition, OCD acceptance of a C-141 report does not relieve the operator of responsibility for compliance with any other federal, state, or local laws and/or regulations.

I hereby agree and sign off to the above statement	Name: Heather Huntington Title: Permitting Tech Email: hhuntington@enduringresources.com Date: 05/27/2026
--	---

The OCD recognizes that proposed remediation measures may have to be minimally adjusted in accordance with the physical realities encountered during remediation. If the responsible party has any need to significantly deviate from the remediation plan proposed, then it should consult with the division to determine if another remediation plan submission is required.

Sante Fe Main Office
Phone: (505) 476-3441

General Information
Phone: (505) 629-6116

Online Phone Directory
<https://www.emnrd.nm.gov/ocd/contact-us>

State of New Mexico
Energy, Minerals and Natural Resources
Oil Conservation Division
1220 S. St Francis Dr.
Santa Fe, NM 87505

QUESTIONS, Page 5

Action 588563

QUESTIONS (continued)

Operator: DJR OPERATING, LLC 200 Energy Court Farmington, NM 87401	OGRID: 371838
	Action Number: 588563
	Action Type: [C-141] Remediation Closure Request C-141 (C-141-v-Closure)

QUESTIONS

Deferral Requests Only	
<i>Only answer the questions in this group if seeking a deferral upon approval this submission. Each of the following items must be confirmed as part of any request for deferral of remediation.</i>	
Requesting a deferral of the remediation closure due date with the approval of this submission	No

Sante Fe Main Office
Phone: (505) 476-3441

General Information
Phone: (505) 629-6116

Online Phone Directory
<https://www.emnrd.nm.gov/ocd/contact-us>

State of New Mexico
Energy, Minerals and Natural Resources
Oil Conservation Division
1220 S. St Francis Dr.
Santa Fe, NM 87505

QUESTIONS, Page 6

Action 588563

QUESTIONS (continued)

Operator: DJR OPERATING, LLC 200 Energy Court Farmington, NM 87401	OGRID: 371838
	Action Number: 588563
	Action Type: [C-141] Remediation Closure Request C-141 (C-141-v-Closure)

QUESTIONS

Sampling Event Information	
Last sampling notification (C-141N) recorded	562890
Sampling date pursuant to Subparagraph (a) of Paragraph (1) of Subsection D of 19.15.29.12 NMAC	03/18/2026
What was the (estimated) number of samples that were to be gathered	8
What was the sampling surface area in square feet	1500

Remediation Closure Request	
<i>Only answer the questions in this group if seeking remediation closure for this release because all remediation steps have been completed.</i>	
Requesting a remediation closure approval with this submission	Yes
Have the lateral and vertical extents of contamination been fully delineated	Yes
Was this release entirely contained within a lined containment area	No
All areas reasonably needed for production or subsequent drilling operations have been stabilized, returned to the sites existing grade, and have a soil cover that prevents ponding of water, minimizing dust and erosion	Yes
What was the total surface area (in square feet) remediated	1226
What was the total volume (cubic yards) remediated	128
All areas not reasonably needed for production or subsequent drilling operations have been reclaimed to contain a minimum of four feet of non-waste contain earthen material with concentrations less than 600 mg/kg chlorides, 100 mg/kg TPH, 50 mg/kg BTEX, and 10 mg/kg Benzene	Yes
What was the total surface area (in square feet) reclaimed	1226
What was the total volume (in cubic yards) reclaimed	128
Summarize any additional remediation activities not included by answers (above)	N/A

The responsible party must attach information demonstrating they have complied with all applicable closure requirements and any conditions or directives of the OCD. This demonstration should be in the form of a comprehensive report (in .pdf format) including a scaled site map, sampling diagrams, relevant field notes, photographs of any excavation prior to backfilling, laboratory data including chain of custody documents of final sampling, and a narrative of the remedial activities. Refer to 19.15.29.12 NMAC.

I hereby certify that the information given above is true and complete to the best of my knowledge and understand that pursuant to OCD rules and regulations all operators are required to report and/or file certain release notifications and perform corrective actions for releases which may endanger public health or the environment. The acceptance of a C-141 report by the OCD does not relieve the operator of liability should their operations have failed to adequately investigate and remediate contamination that pose a threat to groundwater, surface water, human health or the environment. In addition, OCD acceptance of a C-141 report does not relieve the operator of responsibility for compliance with any other federal, state, or local laws and/or regulations. The responsible party acknowledges they must substantially restore, reclaim, and re-vegetate the impacted surface area to the conditions that existed prior to the release or their final land use in accordance with 19.15.29.13 NMAC including notification to the OCD when reclamation and re-vegetation are complete.

I hereby agree and sign off to the above statement	Name: Heather Huntington Title: Permitting Tech Email: hhuntington@enduringresources.com Date: 05/27/2026
--	--

Sante Fe Main Office
Phone: (505) 476-3441

General Information
Phone: (505) 629-6116

Online Phone Directory
<https://www.emnrd.nm.gov/ocd/contact-us>

State of New Mexico
Energy, Minerals and Natural Resources
Oil Conservation Division
1220 S. St Francis Dr.
Santa Fe, NM 87505

QUESTIONS, Page 7

Action 588563

QUESTIONS (continued)

Operator: DJR OPERATING, LLC 200 Energy Court Farmington, NM 87401	OGRID: 371838
	Action Number: 588563
	Action Type: [C-141] Remediation Closure Request C-141 (C-141-v-Closure)

QUESTIONS

Reclamation Report	
<i>Only answer the questions in this group if all reclamation steps have been completed.</i>	
Requesting a reclamation approval with this submission	No

Sante Fe Main Office
Phone: (505) 476-3441

General Information
Phone: (505) 629-6116

Online Phone Directory
<https://www.emnrd.nm.gov/ocd/contact-us>

State of New Mexico
Energy, Minerals and Natural Resources
Oil Conservation Division
1220 S. St Francis Dr.
Santa Fe, NM 87505

CONDITIONS

Action 588563

CONDITIONS

Operator: DJR OPERATING, LLC 200 Energy Court Farmington, NM 87401	OGRID: 371838
	Action Number: 588563
	Action Type: [C-141] Remediation Closure Request C-141 (C-141-v-Closure)

CONDITIONS

Created By	Condition	Condition Date
scwells	Remediation closure approved.	6/8/2026