

Spill Volume(Bbls) Calculator		
<i>Inputs in blue, Outputs in red</i>		
Length(Ft)	Width(Ft)	Depth(In)
<u>93.500</u>	<u>65.000</u>	<u>2.000</u>
Cubic Feet Impacted		<u>1012.917</u>
Barrels		<u>180.39</u>
Soil Type	Lined Containment	
Bbls Assuming 100% Saturation	<u>180.39</u>	
Saturation	Fluid present with shovel/backhoe	
Estimated Barrels Released	180.40000	

Instructions
1. Input spill measurements below. Length and width need to be input in feet and depth in inches.
2. Select a soil type from the drop down menu.
3. Select a saturation level from the drop down menu.
(For data gathering instructions see appendix tab)

Measurements	
Length (ft)	94
Width (ft)	65
Depth (in)	2.000









PREPARED BY:
PIMA ENVIRONMENTAL SERVICES, LLC

PREPARED FOR:
Spur Energy

RONCO FEDERAL #1

Incident ID NAPP2613146070

Liner Inspection and Closure Report

June 23, 2026

FACILITY NAME	RONCO FEDERAL #1
DATE OF RELEASE	5/9/2026
INCIDENT NO.	nAPP2613146070



Pima Environmental Services
 5614 N. Lovington Highway
 Hobbs, NM 88240
 575-964-7740

Site Characterization	
DTGW What is the shallowest DTGW beneath the area affected by the release in ft below ground surface (ft bgs)	Between 75 and 100 ft.
GW Depth Determination What method was used to determine the DTGW?	OCD Imaging Records Lookup
Ground or Surface Water Impacted Did this release impact GW or Surface Water?	No
What is the min. distance between the closest lateral extents of the release and the following surace areas?	
Distance to Watercourse A continuously flowing watercourse or any other significant watercourse?	> 5 mi.
Distance to Lakebed Any lakebed, sinkhole, or playa lake (measured from the ordinary high-water mark)?	> 5 mi.
Distance to Public An occupied permanent residence, school, hospital, institution, or church?	Between 1 mi. and 5 mi.
Distance to Private A spring or a private domestic FW well used by less than five households for domestic or stock watering purposes?	Between 1 mi. and 5 mi.
Distance to Fresh Water Any other FW well spring?	Between 500 ft and 1/2 mi.
Within Municipal Boundaries Incorporated municipal boundaries or a defined municipal FW well field?	Between 1 mi. and 5 mi.
Distance to Wetland A wetland?	Between 1/2 mi. and 1 mi.
Overlying Subsurface Mine A subsurface mine?	> 5 mi.
Overlying (Non-Karst) Unstable Area An (non-karst) unstable area?	> 5 mi.
Risk of Karst Geology Categorize the risk of this well/site being in a karst geology?	Low
Distance to or Within 100 yr Floodplain A 100-year floodplain?	Between 1 mi. and 5 mi.
Areas NOT Other Site Did the release impact areas not on exploration, development, production, or storage site?	No
Remediation Plan	
Have the lateral and vertical extents of contamination been fully delineated?	Yes
Lined Containment Area Only Was this release entirely contained within a lined containment area?	Yes
Soil Containment Sampling	(EPA 300.00 or SW4500 CI B?)
Chloride Constituent Chloride (mg/kg)	0
	(EPA SW-846 Method 8015M)?
TPH (GRO+DRO+MRO) Constituent TPH (mg/kg)	0
	(EPA SW-846 Method 8015M)?
GRO + DRO Constituent GRO-DRO (mg/kg)	0
	(EPA SW-846 Method 8021B or 8260B)?
BTEX Constituent BTEX (mg/kg)	0
	(EPA SW-846 Method 8021B or 8260B)?
Benzene Constituent Benzene (mg/kg)	0
Per Subsection B of 19.15.29.11 NMAC unless the site characterization report includes completed efforts at remediation, the report must include a proposed remediation plan in accordance with 19.15.29 NMAC, which includes the anticipated timelines for beginning and completing the remediation.	
Start of Remediation On what estimated date will remediation commence?	5/24/2026
Start of Sampling or Liner Inspection On what date will (or did) the final sampling or liner inspection occur?	5/27/2026
Finish of Remediation On what date will (or was) the remediation complete(d)?	5/27/2026
Surface Area (sq ft) To Be Reclaimed What is the estimated surface area (in sq ft) that will be reclaimed?	0
Surface Area (sq ft) To Be Remediated What is the estimated surface are (in sq ft) that will be remediated?	5,600
Volume (cu yd) To Be Remediated What is the estimated volume (in cubic yds) that will be remediated?	0
Remediation Plan (Cont.) Please answer all that apply	
Ex Situ Excavation Off-Site (Ex Situ) Excavation and off-site disposal (i.e. dig and haul, hydrovac, etc)?	Yes
Ex Situ Excavation On-Site (Ex Situ) Excavation and on-site remediation (i.e. On-Site Land Farms)?	No
In Situ Soil Vapor Extraction (SVE)?	No
In Situ Chemical Processing (In Situ) Chemical processing (i.e. Soil Shredding, Potassium Permanganate, etc.)?	No
In Situ Biological Processing (In Situ) Biological processing (i.e. Microbes/Fertilizer, etc.)?	No
In Situ Physical Processing (In Situ) Physical processing (i.e. Soil Washing, Gypsum, Disking, etc.)?	No
In Situ Ground Water Abatement GW Abatement pursuant to 19.15.30 NMAC?	No
Remediation Other Other (Non-listed remedial process)?	No
Deferral Request Only	
Requesting a deferral of the remediation closure due date with the approval of this submission	No

FACILITY NAME	RONCO FEDERAL #1
DATE OF RELEASE	5/9/2026
INCIDENT NO.	nAPP2613146070



Pima Environmental Services
 5614 N. Lovington Highway
 Hobbs, NM 88240
 575-964-7740

Requesting a remediation closure approval with this submission?	Yes
Have the lateral and vertical extents of contamination been fully delineated?	Yes
Was this release entirely contained within a lined containment area?	Yes
Retired Areas For Production Use All areas reasonably needed for production or subsequent drilling operations have been stabilized, returned to the sites existing grade, and have a soil cover that prevents ponding of water, minimizing dust and erosion?	Yes
Total Surface Area (sq ft) Remediated What was the total surface area (sq ft) remediated?	5,600
Total Volume (cu yd) Remediated What was the total volume (cubic yards) remediated?	0
Reclaimed to Condition Prior Release All areas not reasonably needed for production or subsequent drilling operations have been reclaimed to contain a minimum of four ft of non-waste contain earthen material with concentrations less than 600 mg/kg chlorides, 100 mg/kg TPH, 50 mg/kg BTEX and 10 mg/kg Benzene?	Yes
Total Surface Area (sq ft) Reclaimed What was the total surface area (in sq ft) reclaimed?	0
Remediation Summary Summarize any additional remedialton activities not included by answers (above).	The lined containment was power-washed, and all standing fluids were recovered using a vacuum truck. Following remediation, a liner inspection was conducted, confirming that the containment liner maintained its integrity.



Pima Environmental Services
5614 N. Lovington Highway
Hobbs, NM 88240
575-964-7740

June 23, 2026

NMOCD District 2
811 S. First St
Artesia, NM, 88210

Bureau of Land Management
620 East Green Street
Carlsbad, NM 88220

RE: Liner Inspection and Closure Report
RONCO FEDERAL 1 SWB
GPS: Latitude 32.82563 Longitude -104.01429
UL-C, Section 19, Township 17S, Range 30E
NMOCD Reference No. nAPP2613146070

Spur Energy Partners (Spur) has contracted Pima Environmental Services, LLC (Pima) to perform a liner inspection and prepare this closure report for the release of produced water that occurred at the Ronco Federal 1 SWB (Site). The release was discovered on May 9, 2026, and was initially assigned Incident ID nAPP2613146070 by the New Mexico Oil Conservation Division (NMOCD).

Site Information and Site Characterization

The site is located approximately 2.02 miles northwest of Loco Hills, NM. This spill site is in Unit C, Section 19, Township 17S, Range 30E, Latitude 32.82563 Longitude -104.01429, Eddy County, NM. A Location Map can be found in Figure 1.

Based on a review of well records maintained by the New Mexico Office of the State Engineer (NMOSE), no groundwater data are available within a one-half-mile radius of the site for the past 25 years. Additionally, a review of United States Geological Survey (USGS) records identified no known water wells in the immediate vicinity of the site. Water well survey results and associated maps are provided in Appendix A. The site is located within an area classified as having low karst potential, as depicted in Figure 3. A topographic map illustrating site conditions and surrounding features is provided in Figure 2.

Release Information

nAPP2613146070: On May 9, 2026, the facility experienced a loss of communications, resulting in a tank overflow that discharged approximately 180 barrels of produced water into the lined secondary containment. Upon discovery of the incident, Spur personnel immediately initiated response and recovery actions to minimize the duration and extent of the release. Vacuum truck operations were mobilized, and all released fluids were successfully recovered from within the containment area. Following completion of recovery activities, the lined secondary containment was inspected to evaluate its performance and integrity. No evidence of fluid migration beyond the containment system was observed. Based on field observations, the secondary containment functioned as designed and effectively prevented impacts to surrounding soils and areas outside of the containment. Therefore, no environmental impacts occurred beyond the lined containment. A site map depicting the release location is provided in Figure 4.

Site Assessment and Liner Inspection

On May 24, 2026, Spur personnel submitted a notification for a liner inspection, adhering to the necessary 48-hour notice period. The details of the 48-hour notification can be referenced in Appendix C.

On May 27, 2026, Pima Environmental thoroughly cleaned the lined containment using a power washer, and a vacuum truck was utilized to recover all residual fluids and wash water generated during the cleaning process. These activities were conducted to facilitate a comprehensive inspection of the containment system and verify that no residual contamination remained within the lined containment area.

Upon completion of the cleaning activities, the exposed liner was inspected for signs of tears, punctures, seam failures, or other deficiencies that could compromise containment performance. The inspection confirmed that the liner remained intact and functioned as designed, successfully containing all released fluids within the lined containment area. No evidence of fluid migration beyond the containment system was observed. Based on these findings, the containment system was determined to have maintained its integrity throughout the release and effectively prevented impacts to surrounding soils and the environment. Documentation of the inspection activities, including photographic evidence, is provided in Appendices C and D.

Closure Request

After careful review, Pima requests that this incident nAPP2613146070 be closed. Spur has complied with the applicable closure requirements.

For questions or additional information, please feel free to contact:

Spur Energy – Katherine Purvis at 575-441-8619 or katherine.purvis@spurenergy.com

Pima Environmental Services – Sebastian Orozco at 619-721-4813 or Sebastian@pimaoil.com.

Attachments

Figures:

- 1- Location Map
- 2- Topographic Map
- 3- Karst Map
- 4- Site Map

Appendices:

- Appendix A- Referenced Water Surveys
- Appendix B- Soil Survey, Geological Data, FEMA Flood Map, Wetland Map
- Appendix C-48 Hour Notification and Liner Inspection Form
- Appendix D- Photographic Documentation



Figures:

Figure 1- Location Map

Figure 2- Topographic Map



Figure 3- Karst Map

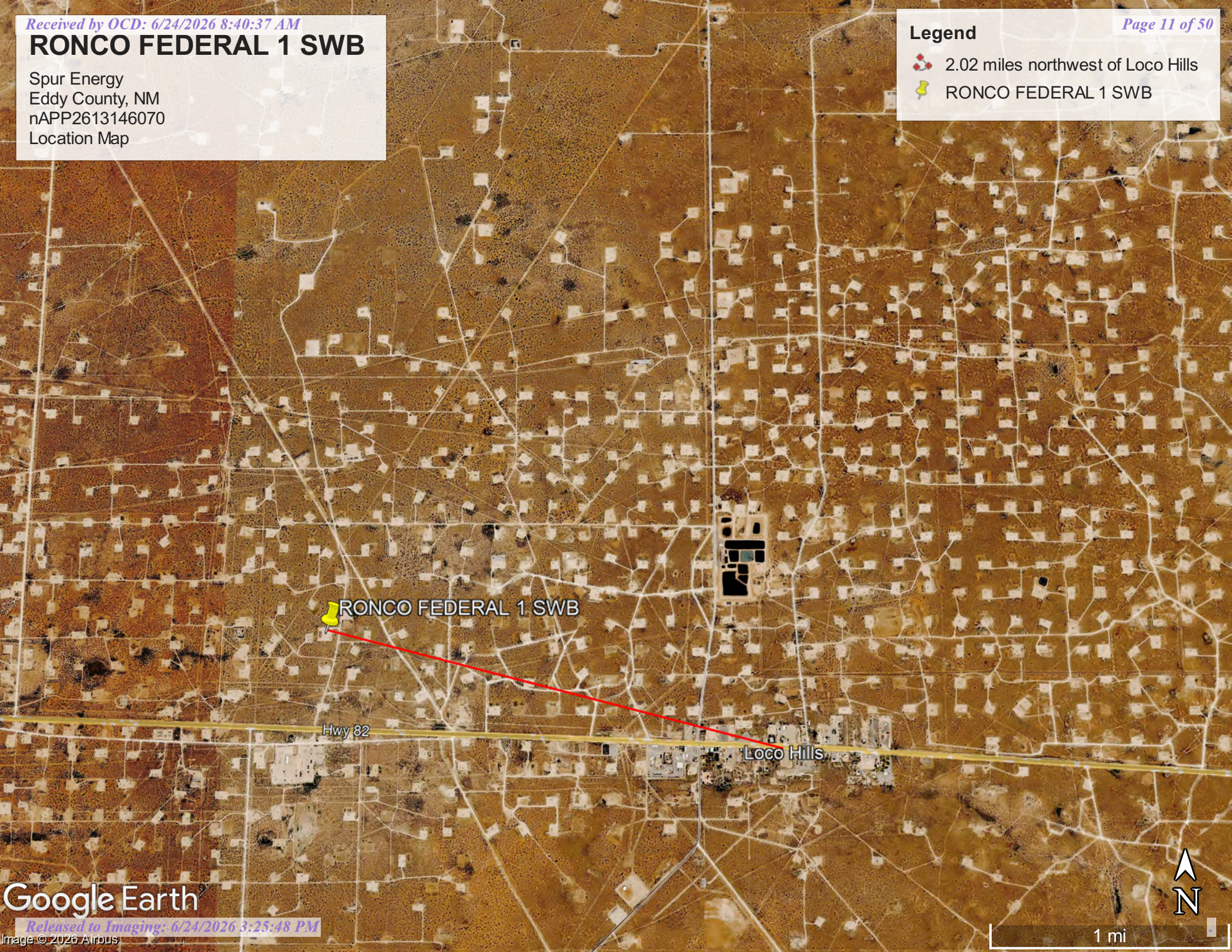
Figure 4- Site Map

RONCO FEDERAL 1 SWB

Spur Energy
Eddy County, NM
nAPP2613146070
Location Map

Legend


-  2.02 miles northwest of Loco Hills
-  RONCO FEDERAL 1 SWB

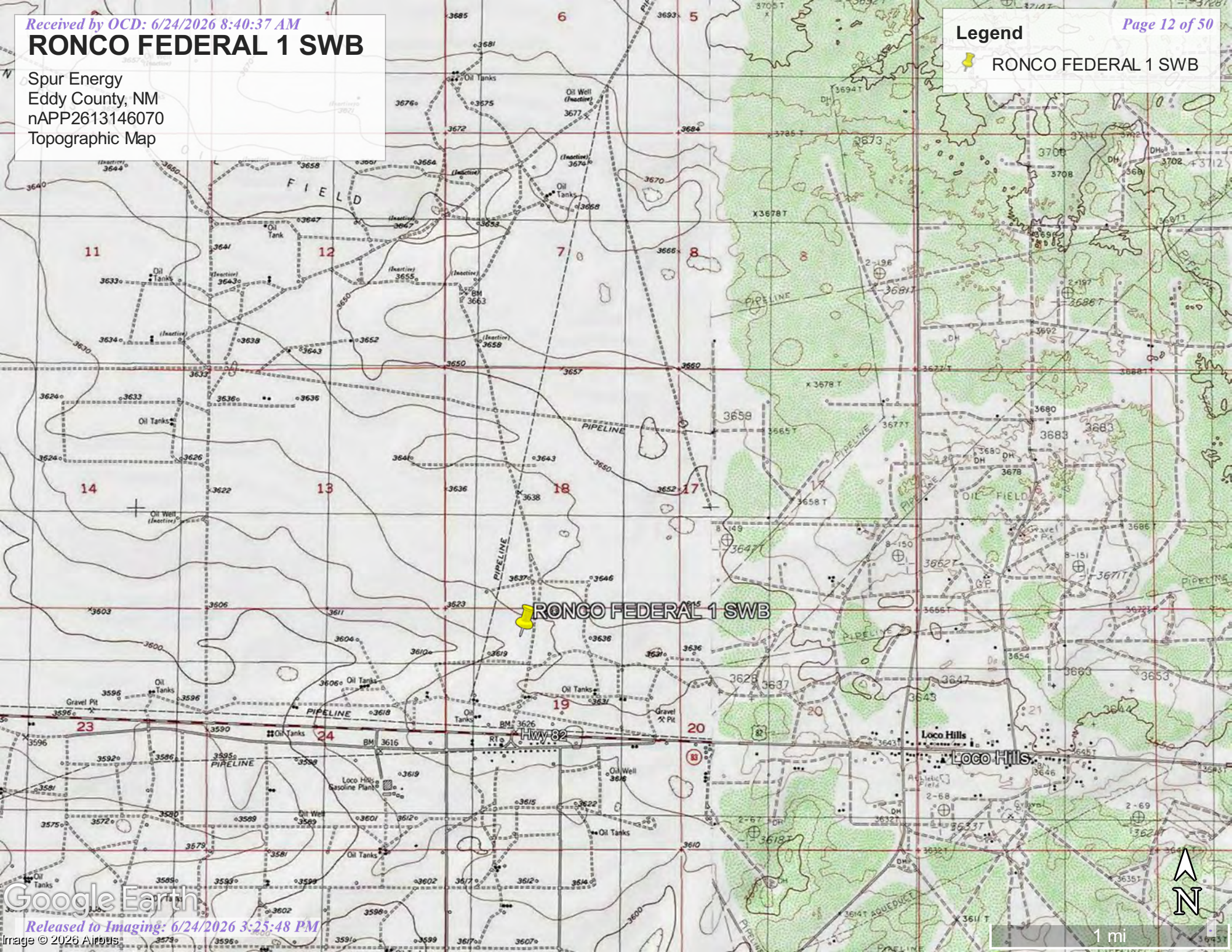


RONCO FEDERAL 1 SWB

Spur Energy
Eddy County, NM
nAPP2613146070
Topographic Map

Legend

 RONCO FEDERAL 1 SWB

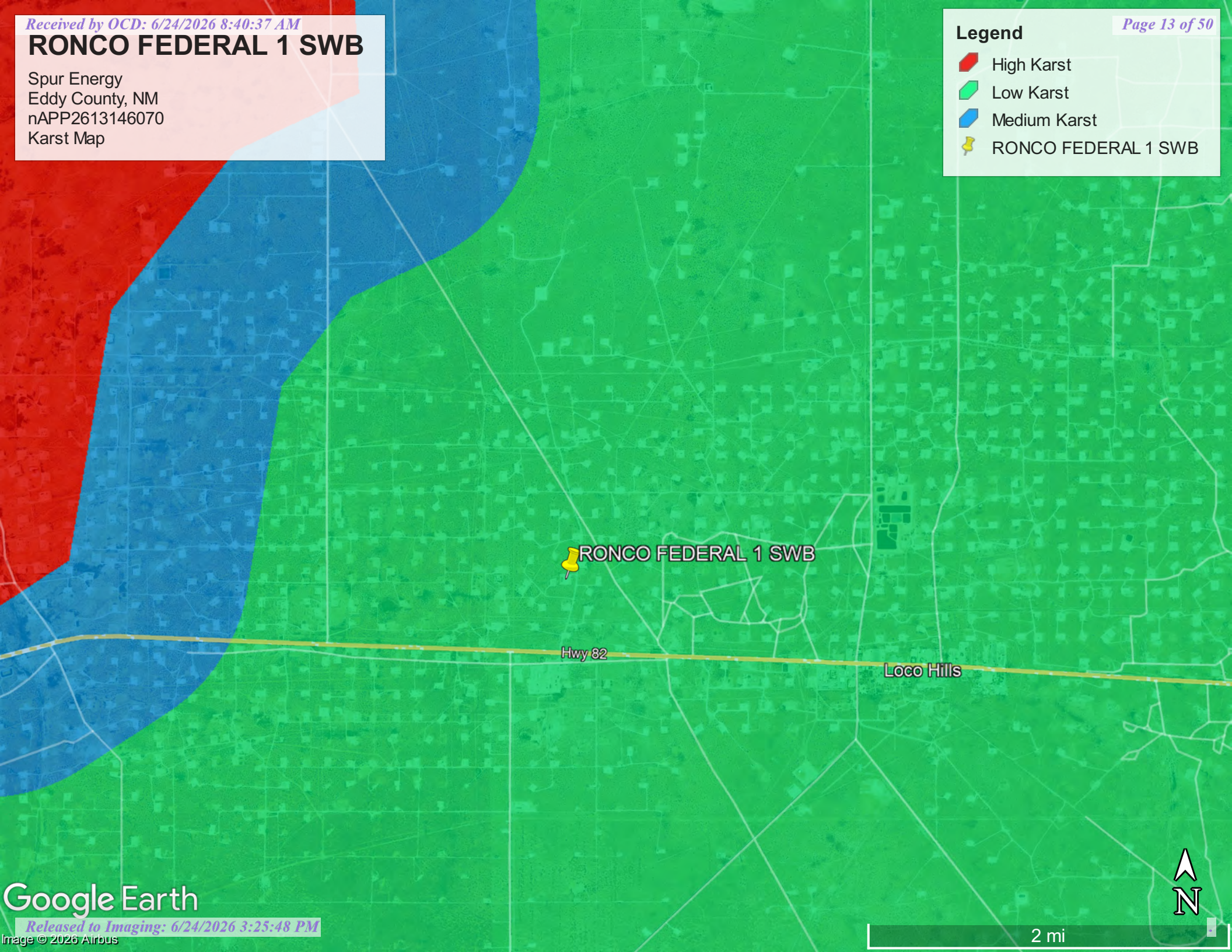


RONCO FEDERAL 1 SWB

Spur Energy
Eddy County, NM
nAPP2613146070
Karst Map

Legend


-  High Karst
-  Low Karst
-  Medium Karst
-  RONCO FEDERAL 1 SWB



RONCO FEDERAL T SWB

Spur Energy
Eddy County, NM
nAPP2613146070
SiteMap

Legend

-  Liner Inspection Area





Appendix A

Water Surveys:

- OSE
- USGS
- Surface Water Map

Point of Diversion Summary

quarters are 1=NW 2=NE 3=SW 4=SE
quarters are smallest to largest

NAD83 UTM in meters

Well Tag	POD Nbr	Q64	Q16	Q4	Sec	Tws	Rng	X	Y	Map
NA	RA 13284 POD1	NE	NW	SE	08	17S	30E	594449.5	3634729.7	

* UTM location was derived from PLSS - see Help

Driller License:	1249	Driller Company:	ATKINS ENGINEERING ASSOC. INC.
Driller Name:	JACKIE D. ATKINS		
Drill Start Date:	2023-03-22	Drill Finish Date:	2023-03-22
Plug Date:	2023-03-27		
Log File Date:	2023-04-07	PCW Rcv Date:	
Source:			
Pump Type:		Pipe Discharge Size:	
Estimated Yield:			
Casing Size:		Depth Well:	
Depth Water:			

The data is furnished by the NMOSE/ISC and is accepted by the recipient with the expressed understanding that the OSE/ISC make no warranties, expressed or implied, concerning the accuracy, completeness, reliability, usability, or suitability for any particular purpose of the data.

5/15/26 12:31 PM MST

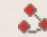


Point of Diversion Summary

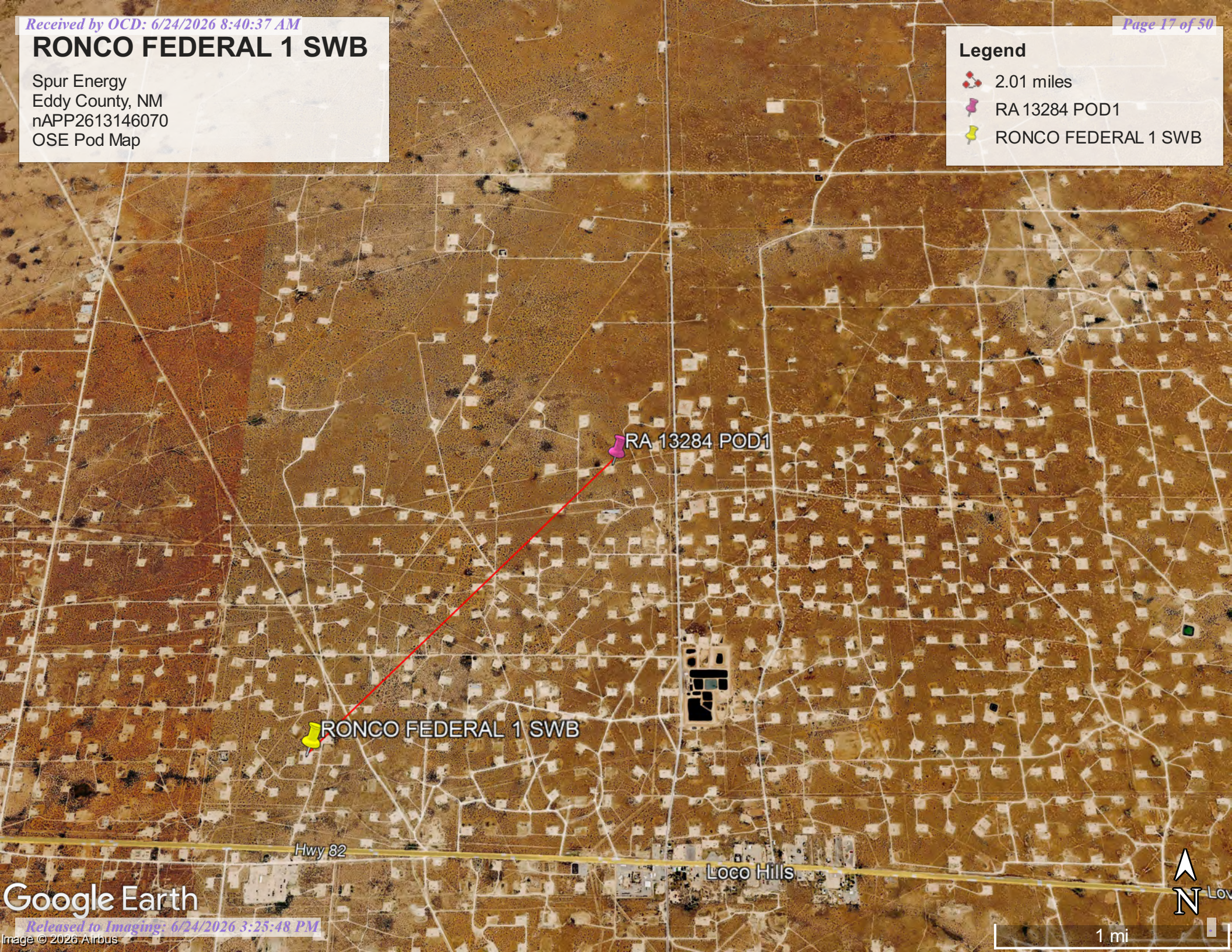
©2024 New Mexico Office of the State Engineer, All Rights Reserved. | [Disclaimer](#) | [Contact Us](#) | [Help](#) | [Home](#) |

RONCO FEDERAL 1 SWB

Spur Energy
Eddy County, NM
nAPP2613146070
OSE Pod Map

Legend

-  2.01 miles
-  RA 13284 POD1
-  RONCO FEDERAL 1 SWB



RA 13284 POD1

RONCO FEDERAL 1 SWB

Hwy 82

Loco Hills

Monitoring location

16S.28E.24.22423A - USGS-325448104071801

Important for you to know:



- USGS will be performing maintenance on WDFN webpages beginning Tuesday, May 26. If you cannot access the page you are intending or are unexpectedly redirected to a different page, please reach out to wdfn@usgs.gov for assistance.

DID YOU KNOW You can see all water data collected at this monitoring location in the *Available data* section of the page. Learn more about [centralized water data delivery](#) in WDFN.



1 year
 10 years
 Period of record

Scale Linear

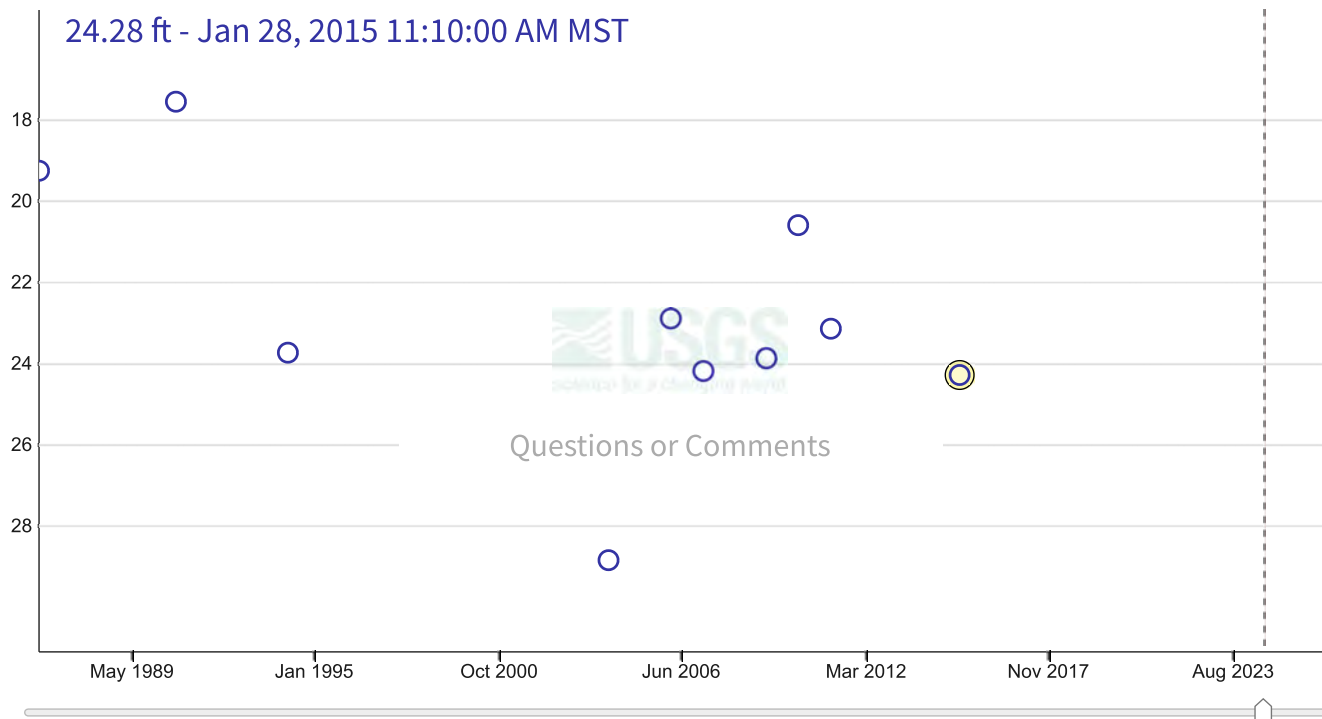
[Log](#)

Field measurements

16S.28E.24.22423A - USGS-325448104071801

June 12, 1986 - May 15, 2026

Depth to water level, feet below land surface



IMPORTANT Data may be [provisional](#)

Show legend ▾

Hide graph details ^

	Value	Status	
<input checked="" type="radio"/> Selected field measurement	24.28	Approved Static	Jan 28, 2015 11:10:00 AM MST

Hide graph details ^

Change time span

Download data

View tabular data

Available data

Select data types to graph from categories based on the way the data were collected.

[Learn about the data collection categories](#)

Expand all data collections

Continuous data

0 data types available

Daily data

0 data types available

Field measurements

3 data types available - data from 1986-06-12 to 2015-01-28

Hide these data types

Field measurements are physically measured values collected during a visit to the monitoring location.

[Learn about Field measurements](#)

	Data type	Data date range
Graphed	Depth to water level, feet below land surface	1986-06-12 2015-01-28
<input type="button" value="Graph it"/>	Groundwater level above NAVD 1988, feet	1986-06-12 2015-01-28
<input type="button" value="Graph it"/>	Groundwater level above NGVD 1929, feet	1986-06-12 2015-01-28

Hide these data types

Discrete sample data

0 observed properties (data types) available

Statistical tables for select daily data types

0 data types available

Location details and information

Hide location details

Metadata Element	Location Metadata	Metadata Code
Agency ⓘ	U.S. Geological Survey	USGS
Location identification number ⓘ	325448104071801	n/a
Location name ⓘ	16S.28E.24.22423A	n/a
Site type ⓘ	Well ⓘ	GW
Decimal latitude (WGS84)	32.9134467448556	n/a
Decimal longitude (WGS84)	-104.122178339225	n/a
Latitude-longitude method ⓘ	Interpolated from map	M
Latitude-longitude accuracy ⓘ	Unknown or unspecified.	U
District ⓘ	New Mexico	35

Metadata Element	Location Metadata	Metadata Code
State ⓘ	New Mexico	35
County ⓘ	Eddy County	015
Country	United States of America	n/a
Altitude of gage/land surface	3568 feet	n/a
Method altitude determined	Interpolated from topographic map.	M
Altitude accuracy	5 feet	n/a
Altitude datum ⓘ	National Geodetic Vertical Datum of 1929	NGVD29
Subbasin hydrologic unit ⓘ	Upper Pecos-Black	13060011
Drainage basin ⓘ		n/a
Date of first construction ⓘ		n/a
Drainage area ⓘ		n/a
Contributing drainage area		n/a
Time zone abbreviation	MST	n/a
Site honors Daylight	Y	n/a

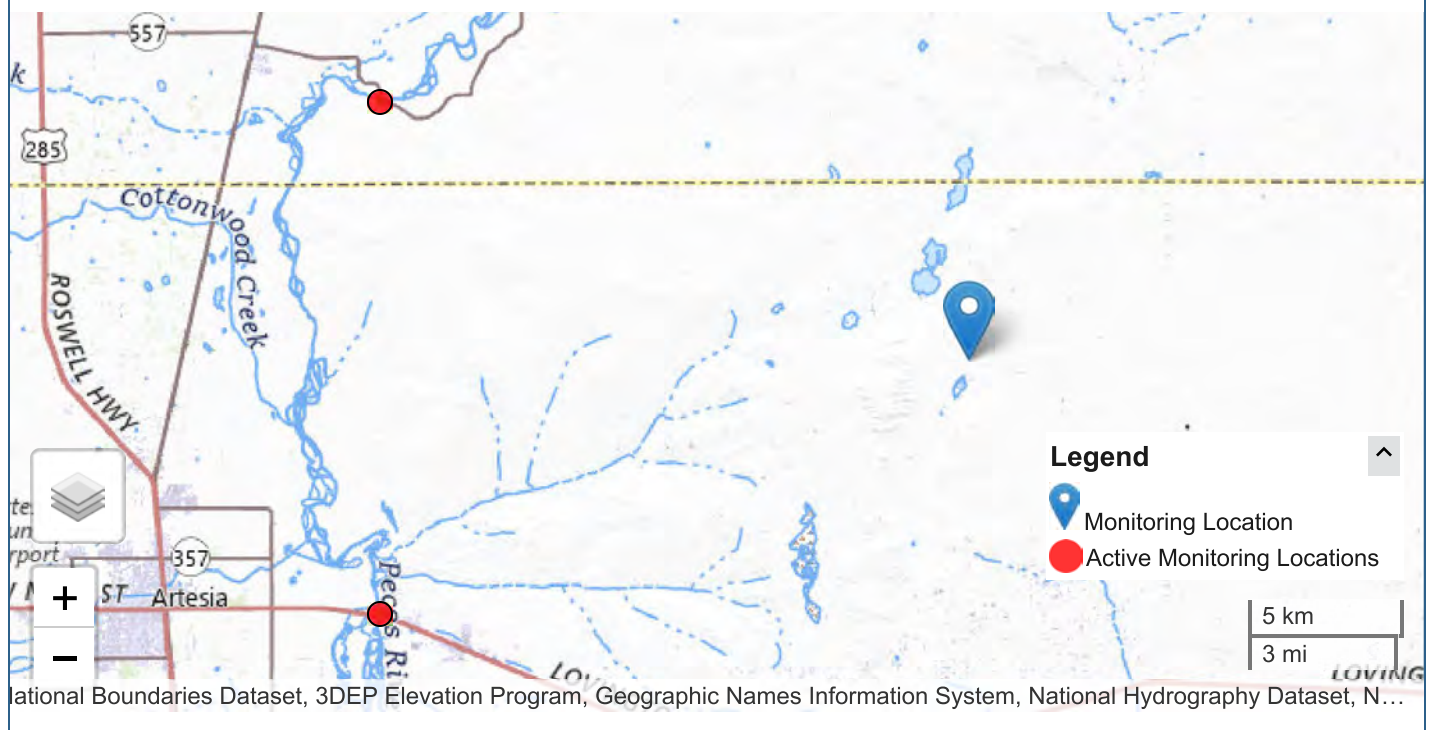
Metadata Element	Location Metadata	Metadata Code
Saving Time ⓘ		
National aquifer	Other aquifers	N9999OTHER
Local aquifer	Alluvium, Bolson Deposits and Other Surface Deposits	110AVMB
Local aquifer type	Unconfined single aquifer	U
Well depth		n/a
Hole depth ⓘ		n/a
Source of depth data		n/a

Monitoring locations with continuous data in last 120 days

2 locations found

[View these locations in My Favorites](#)

[Use Explore USGS Water Data to discover additional data near this location](#)



Interested in understanding how to access the upstream/downstream data? [Learn about the Network-Linked Data Index \(NLDI\)](#)

[DOI Privacy Policy](#) | [Legal](#) | [Accessibility](#) | [Site Map](#) | [Contact USGS](#)




Follow

[U.S. Department of the Interior](#) | [DOI Inspector General](#) | [White House](#) | [No Fear Act](#) | [FOIA](#)

RONCO FEDERAL 1 SWB

Spur Energy
Eddy County, NM
nAPP2613146070
USGS Map

Legend

-  8.72 miles
-  RONCO FEDERAL 1 SWB
-  USGS-325448104071801

USGS-325448104071801

RONCO FEDERAL 1 SWB

Hwy 82

Loco Hills

3 mi Lovington




Google Earth

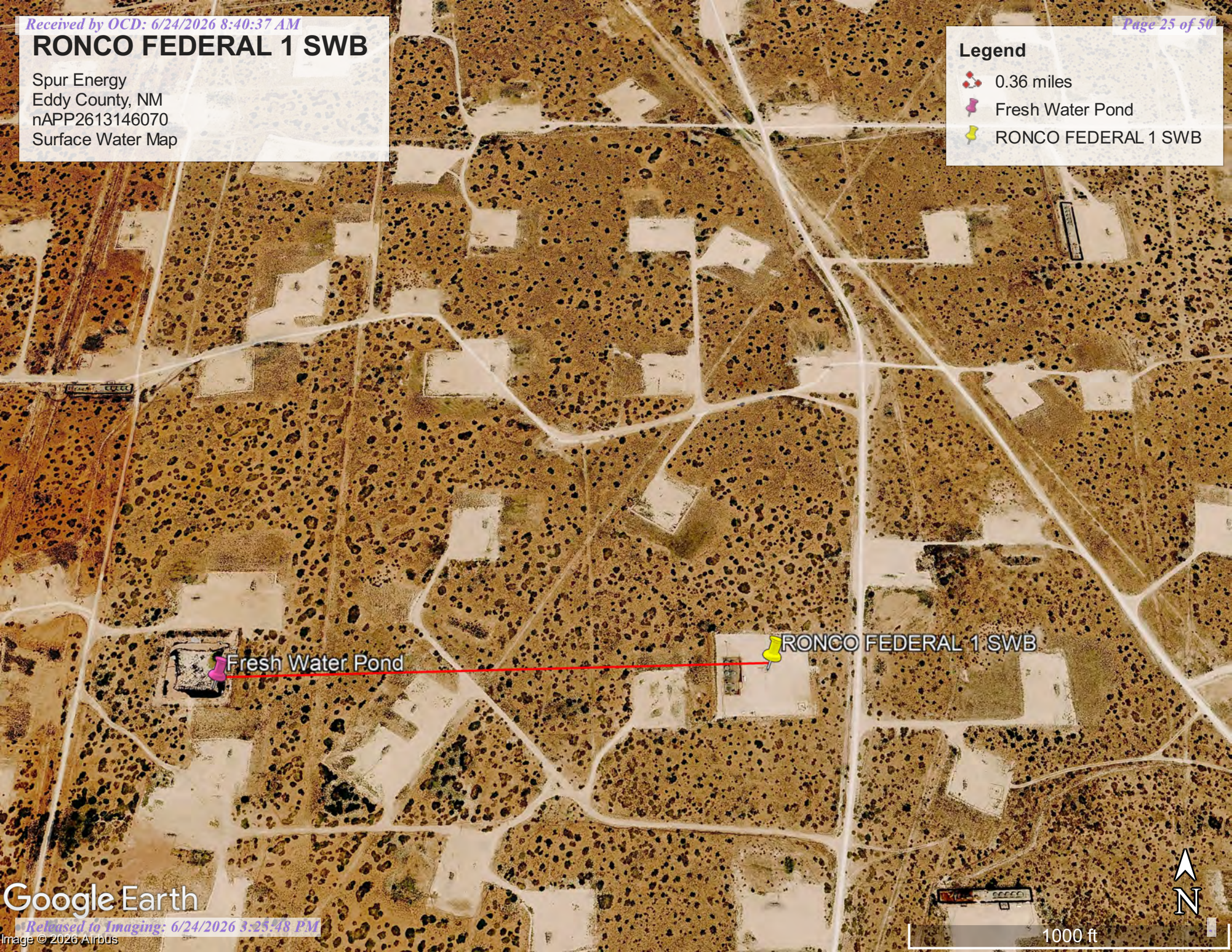


RONCO FEDERAL 1 SWB

Spur Energy
Eddy County, NM
nAPP2613146070
Surface Water Map

Legend

-  0.36 miles
-  Fresh Water Pond
-  RONCO FEDERAL 1 SWB



Fresh Water Pond

RONCO FEDERAL 1 SWB





Appendix B

- Soil Survey & Soil Maps
- Geological Data
- FEMA Flood Map
- Wetlands Map

Map Unit Description: Tonuco loamy fine sand, 0 to 3 percent slopes---Eddy Area, New Mexico

Eddy Area, New Mexico

TF—Tonuco loamy fine sand, 0 to 3 percent slopes

Map Unit Setting

National map unit symbol: 1w61
Landscape: Uplands
Elevation: 3,000 to 4,100 feet
Mean annual precipitation: 10 to 14 inches
Mean annual air temperature: 60 to 64 degrees F
Frost-free period: 200 to 217 days
Farmland classification: Not prime farmland

Map Unit Composition

Tonuco and similar soils: 98 percent
Minor components: 2 percent
Estimates are based on observations, descriptions, and transects of the mapunit.

Description of Tonuco

Setting

Landscape: Uplands
Landform: Alluvial fans, Plains
Landform position (three-dimensional): Rise
Down-slope shape: Linear, convex
Across-slope shape: Linear
Parent material: Mixed alluvium and/or eolian sands

Typical profile

H1 - 0 to 5 inches: loamy fine sand
H2 - 5 to 15 inches: loamy fine sand
H3 - 15 to 19 inches: indurated

Properties and qualities

Slope: 0 to 3 percent
Depth to restrictive feature: 6 to 20 inches to petrocalcic
Drainage class: Excessively drained
Runoff class: Very high
Capacity of the most limiting layer to transmit water (Ksat): Very low to moderately low (0.00 to 0.06 in/hr)
Depth to water table: More than 80 inches
Frequency of flooding: None
Frequency of ponding: None
Maximum salinity: Nonsaline (0.0 to 1.0 mmhos/cm)
Sodium adsorption ratio, maximum: 1.0
Available water supply, 0 to 60 inches: Very low (about 1.3 inches)

Interpretive groups

Land capability classification (irrigated): None specified
Land capability classification (nonirrigated): 7e
Hydrologic Soil Group: D



Map Unit Description: Tonuco loamy fine sand, 0 to 3 percent slopes---Eddy Area, New Mexico

Ecological site: R070BD004NM - Sandy
Hydric soil rating: No

Minor Components

Tonuco

Percent of map unit: 1 percent
Ecological site: R070BD004NM - Sandy
Hydric soil rating: No

Dune land

Percent of map unit: 1 percent
Hydric soil rating: No

Data Source Information

Soil Survey Area: Eddy Area, New Mexico
Survey Area Data: Version 21, Sep 9, 2025

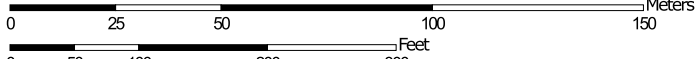


Soil Map—Eddy Area, New Mexico



Soil Map may not be valid at this scale.

Map Scale: 1:1,790 if printed on A landscape (11" x 8.5") sheet.



Map projection: Web Mercator Corner coordinates: WGS84 Edge tics: UTM Zone 13N WGS84




Natural Resources Conservation Service

Web Soil Survey
National Cooperative Soil Survey

5/15/2026
Page 1 of 3


MAP LEGEND

Area of Interest (AOI)

 Area of Interest (AOI)




















Soils







 Soil Map Unit Polygons

 Soil Map Unit Lines


 Soil Map Unit Points

Special Point Features

-  Blowout
-  Borrow Pit
-  Clay Spot
-  Closed Depression
-  Gravel Pit
-  Gravelly Spot
-  Landfill
-  Lava Flow
-  Marsh or swamp
-  Mine or Quarry
-  Miscellaneous Water
-  Perennial Water
-  Rock Outcrop
-  Saline Spot
-  Sandy Spot
-  Severely Eroded Spot
-  Sinkhole
-  Slide or Slip
-  Sodic Spot

-  Spoil Area
-  Stony Spot
-  Very Stony Spot
-  Wet Spot
-  Other
-  Special Line Features

Water Features

 Streams and Canals

Transportation

-  Rails
-  Interstate Highways
-  US Routes
-  Major Roads
-  Local Roads

Background

 Aerial Photography

MAP INFORMATION

The soil surveys that comprise your AOI were mapped at 1:20,000.

Warning: Soil Map may not be valid at this scale.
 Enlargement of maps beyond the scale of mapping can cause misunderstanding of the detail of mapping and accuracy of soil line placement. The maps do not show the small areas of contrasting soils that could have been shown at a more detailed scale.

Please rely on the bar scale on each map sheet for map measurements.

Source of Map: Natural Resources Conservation Service
 Web Soil Survey URL:
 Coordinate System: Web Mercator (EPSG:3857)

Maps from the Web Soil Survey are based on the Web Mercator projection, which preserves direction and shape but distorts distance and area. A projection that preserves area, such as the Albers equal-area conic projection, should be used if more accurate calculations of distance or area are required.

This product is generated from the USDA-NRCS certified data as of the version date(s) listed below.

Soil Survey Area: Eddy Area, New Mexico
 Survey Area Data: Version 21, Sep 9, 2025

Soil map units are labeled (as space allows) for map scales 1:50,000 or larger.

Date(s) aerial images were photographed: Mar 22, 2025—Apr 12, 2025

The orthophoto or other base map on which the soil lines were compiled and digitized probably differs from the background imagery displayed on these maps. As a result, some minor shifting of map unit boundaries may be evident.



Map Unit Legend

Map Unit Symbol	Map Unit Name	Acres in AOI	Percent of AOI
TF	Tonuco loamy fine sand, 0 to 3 percent slopes	13.1	100.0%
Totals for Area of Interest		13.1	100.0%



(<https://www.usgs.gov/>)

Mineral Resources (<https://www.usgs.gov/energy-and-minerals/mineral-resources-program>)
 / Online Spatial Data (/) / Geology (/geology/) / by state (/geology/state/)
 / New Mexico (/geology/state/state.php?state=NM)

Eolian and piedmont deposits

XML (/geology/state/xml/NMQep;0)

JSON (/geology/state/json/NMQep;0)

Shapefile (/geology/state/unit-shape.php?unit=NMQep;0)

Interlayered eolian sands and piedmont-slope deposits along the eastern flank of the Pecos River valley, primarily between Roswell and Carlsbad. Typically capped by thin eolian deposits.

State	New Mexico (/geology/state/state.php?state=NM)
Name	Eolian and piedmont deposits
Geologic age	Holocene to middle Pleistocene
Lithologic constituents	Major Unconsolidated (Eolian) Interlayered eolian sands and piedmont-slope deposits
References	New Mexico Bureau of Geology and Mineral Resources, 2003, Geologic Map of New Mexico, scale 1:500,000 (includes some new polygons, faults, and attributes not in NM001 - heads up digitizing by JHorton).
NGMDB product	NGMDB product page for 22974 (https://ngmdb.usgs.gov/Prodesc/proddesc_22974.htm)

Counties

Chaves (/geology/state/fips-unit.php?code=f35005) - DeBaca (/geology/state/fips-unit.php?code=f35011) - Eddy (/geology/state/fips-unit.php?code=f35015) - Lea (/geology/state/fips-unit.php?code=f35025) - Roosevelt (/geology/state/fips-unit.php?code=f35041)

[DOI Privacy Policy \(https://www.doi.gov/privacy\)](https://www.doi.gov/privacy) | [Legal \(https://www.usgs.gov/laws/policies_notices.html\)](https://www.usgs.gov/laws/policies_notices.html) | [Accessibility \(https://www2.usgs.gov/laws/accessibility.html\)](https://www2.usgs.gov/laws/accessibility.html) |

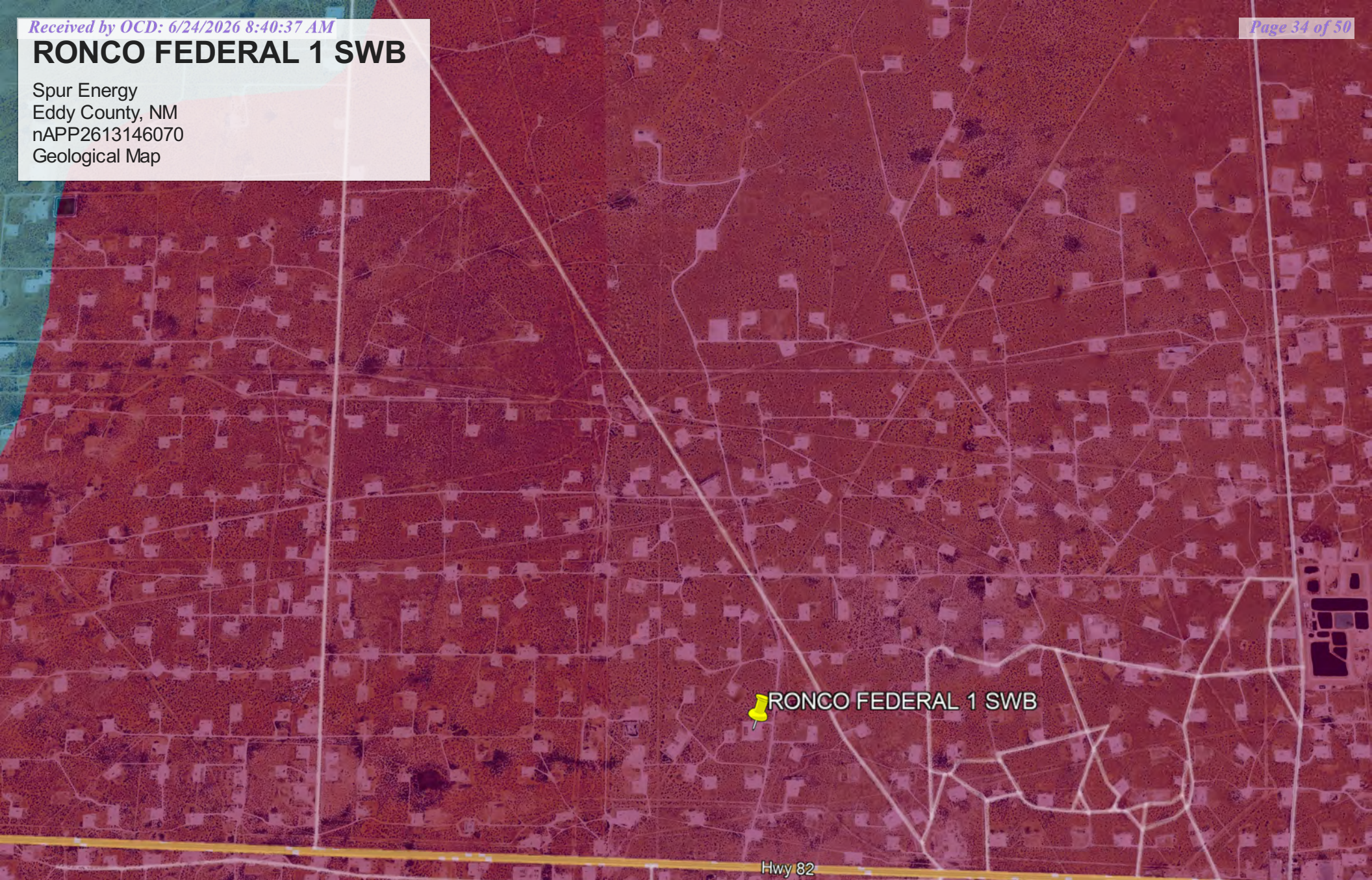
[Site Map \(https://www.usgs.gov/sitemap.html\)](https://www.usgs.gov/sitemap.html) | [Contact USGS \(https://answers.usgs.gov/\)](https://answers.usgs.gov/)

[U.S. Department of the Interior \(https://www.doi.gov/\)](https://www.doi.gov/) | [DOI Inspector General \(https://www.doioig.gov/\)](https://www.doioig.gov/) | [White House \(https://www.whitehouse.gov/\)](https://www.whitehouse.gov/) |

[E-gov \(https://www.whitehouse.gov/omb/management/egov/\)](https://www.whitehouse.gov/omb/management/egov/) | [No Fear Act \(https://www.doi.gov/pmb/eeo/no-fear-act\)](https://www.doi.gov/pmb/eeo/no-fear-act) | [FOIA \(https://www2.usgs.gov/foia\)](https://www2.usgs.gov/foia)

RONCO FEDERAL 1 SWB




Spur Energy
Eddy County, NM
nAPP2613146070
Geological Map



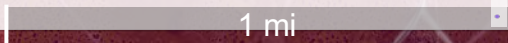
RONCO FEDERAL 1 SWB

Hwy 82

Legend

-  Eolian and piedmont deposits
-  Older alluvial deposits of upland plains, piedmont areas, calcic soils, eolian cover sediments of High Plains region
-  RONCO FEDERAL 1 SWB

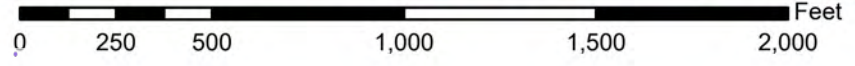
Google Earth



National Flood Hazard Layer FIRMette



104°11'10"W 32°49'47"N



104°0'33"W 32°49'17"N

Basemap Imagery Source: USGS National Map 2023

Legend

SEE FIS REPORT FOR DETAILED LEGEND AND INDEX MAP FOR FIRM PANEL LAYOUT

SPECIAL FLOOD HAZARD AREAS		Without Base Flood Elevation (BFE) Zone A, V, A99
		With BFE or Depth Zone AE, AO, AH, VE, AR
		Regulatory Floodway
OTHER AREAS OF FLOOD HAZARD		0.2% Annual Chance Flood Hazard, Areas of 1% annual chance flood with average depth less than one foot or with drainage areas of less than one square mile. Zone X
		Future Conditions 1% Annual Chance Flood Hazard Zone X
		Area with Reduced Flood Risk due to Levee. See Notes. Zone X
		Area with Flood Risk due to Levee. Zone X
OTHER AREAS		NO SCREEN Area of Minimal Flood Hazard Zone X
		Effective LOMRs
GENERAL STRUCTURES		Area of Undetermined Flood Hazard Zone D
		Channel, Culvert, or Storm Sewer
		Levee, Dike, or Floodwall
OTHER FEATURES		20.2 Cross Sections with 1% Annual Chance
		17.5 Water Surface Elevation
		Coastal Transect
		Base Flood Elevation Line (BFE)
		Limit of Study
		Jurisdiction Boundary
MAP PANELS		Coastal Transect Baseline
		Profile Baseline
		Hydrographic Feature
		Digital Data Available
		No Digital Data Available
		Unmapped

The pin displayed on the map is an approximate point selected by the user and does not represent an authoritative property location.

This map complies with FEMA's standards for the use of digital flood maps if it is not void as described below. The basemap shown complies with FEMA's basemap accuracy standards

The flood hazard information is derived directly from the authoritative NFHL web services provided by FEMA. This map was exported on **5/15/2026 at 6:47 PM** and does not reflect changes or amendments subsequent to this date and time. The NFHL and effective information may change or become superseded by new data over time.

This map image is void if the one or more of the following map elements do not appear: basemap imagery, flood zone labels, legend, scale bar, map creation date, community identifiers, FIRM panel number, and FIRM effective date. Map images for unmapped and unmodernized areas cannot be used for regulatory purposes.

Released to Imaging: 6/21/2026 3:25:48 PM

Received by OCD: 6/24/2026 8:40:37 AM

Page 35 of 50



U.S. Fish and Wildlife Service National Wetlands Inventory


Wetlands



U.S. Fish and Wildlife Service, National Standards and Support Team,
wetlands_team@fws.gov

May 15, 2026

Wetlands

- | | | | | | |
|---|--------------------------------|---|-----------------------------------|---|----------|
|  | Estuarine and Marine Deepwater |  | Freshwater Emergent Wetland |  | Lake |
|  | Estuarine and Marine Wetland |  | Freshwater Forested/Shrub Wetland |  | Other |
| | |  | Freshwater Pond |  | Riverine |

This map is for general reference only. The US Fish and Wildlife Service is not responsible for the accuracy or currentness of the base data shown on this map. All wetlands related data should be used in accordance with the layer metadata found on the Wetlands Mapper web site.



Appendix C

- 48-Hour Notification
- Liner Inspection Form

Sebastian@pimaoil.com

From: OCDOnline@emnrd.nm.gov
Sent: Sunday, May 24, 2026 7:38 AM
To: sebastian@pimaoil.com
Subject: The Oil Conservation Division (OCD) has accepted the application, Application ID: 587884

To whom it may concern (c/o Sebastian Orozco for Spur Energy Partners LLC),

The OCD has received the submitted *Notification for Liner Inspection for a Release* (C-141L), for incident ID (n#) nAPP2613146070.

The liner inspection is expected to take place:

When: 05/27/2026 @ 08:00

Where: C-19-17S-30E 0 FNL 0 FEL (32.82563,-104.01429)

Additional Information: Pima Environmental Services
619-721-4813

Additional Instructions: 32.82563,-104.01429

An OCD representative may be available onsite at the date and time reported. In the absence or presence of an OCD representative, liner inspection pursuant to 19.15.29.11.A(5)(a) NMAC is required. Should there be a change in the scheduled date and time of the sampling event, then another notification should be resubmitted through OCD permitting as soon as possible.

- **Failure to notify the OCD of liner inspections including any changes in date/time per the requirements of 19.15.29.11.A(5)(a)(ii) NMAC, may result in the inspection not being accepted.**

If you have any questions regarding this application, or don't know why you have received this email, please contact us.

New Mexico Energy, Minerals and Natural Resources Department
1220 South St. Francis Drive
Santa Fe, NM 87505



Pima Environmental Services, LLC

Liner Inspection Form

Company Name: Spur Energy

Site: RONCO FEDERAL #1

Lat/Long: 32.82563,-104.01429

NMOCD Incident ID & Incident Date: nAPP2613146070 05/09/2026

2-Day Notification Sent: via OCD portal 05/24/2026

Inspection Date: 05/27/2026

Liner Type: Earthen w/liner Earthen no liner Polystar
 Steel w/poly liner Steel w/spray epoxy No Liner

Other: _____

Visualization	Yes	No	Comments
Is there a tear in the liner?		X	
Are there holes in the liner?		X	
Is the liner retaining any fluids?		X	
Does the liner have integrity to contain a leak?	X		

Comments: _____

Inspector Name: Andrew Franco Inspector Signature: Andrew Franco



Appendix D

- Photographic Documentation

PHOTOGRAPHIC DOCUMENTATION

SITE NAME: Ronco Federal #1

Initial Site Inspections :



Site Information Sign.

Photo of liner taken during initial liner inspection facing west.



Photo of liner taken during initial liner inspection facing west.

Photo of liner taken during initial liner inspection facing northwest.

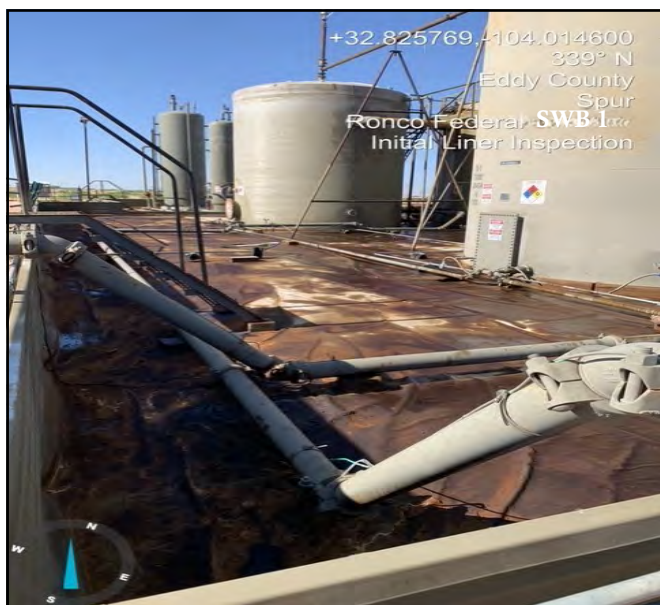


Photo taken during initial liner assessment facing north.



Photo taken during initial liner assessment facing northwest.

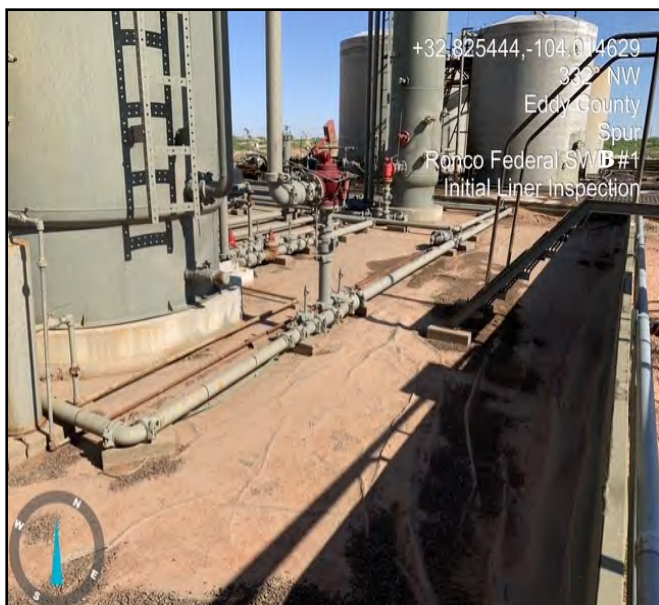


Photo taken during initial liner assessment facing northwest.



Photo taken during initial liner assessment facing northeast.

PHOTOGRAPHIC DOCUMENTATION

SITE NAME: Ronco Federal SWB 1

Pre- Powerwash :



Photo taken pre powerwash process facing southwest.



Photo taken pre powerwash process facing northwest.



Photo taken pre powerwash process facing south.



Photo taken pre powerwash process facing east.

PHOTOGRAPHIC DOCUMENTATION

SITE NAME: Ronco Federal SWB 1

Post- Powerwash :



Photo taken post powerwash facing northwest.



Photo taken post powerwash facing west.



Photo taken post powerwash facing southwest.



Photo taken post powerwash facing southeast.

Sante Fe Main Office
Phone: (505) 476-3441

General Information
Phone: (505) 629-6116

Online Phone Directory
<https://www.emnrd.nm.gov/ocd/contact-us>

State of New Mexico
Energy, Minerals and Natural Resources
Oil Conservation Division
1220 S. St Francis Dr.
Santa Fe, NM 87505

QUESTIONS

Action 598806

QUESTIONS

Operator: Spur Energy Partners LLC 9655 Katy Freeway Houston, TX 77024	OGRID: 328947
	Action Number: 598806
	Action Type: [C-141] Remediation Closure Request C-141 (C-141-v-Closure)

QUESTIONS

Prerequisites	
Incident ID (n#)	nAPP2613146070
Incident Name	NAPP2613146070 RONCO FEDERAL 1 SWB @ C-19-17S-30E
Incident Type	Produced Water Release
Incident Status	Remediation Closure Report Received

Location of Release Source	
<i>Please answer all the questions in this group.</i>	
Site Name	RONCO FEDERAL 1 SWB
Date Release Discovered	05/09/2026
Surface Owner	Federal

Incident Details	
<i>Please answer all the questions in this group.</i>	
Incident Type	Produced Water Release
Did this release result in a fire or is the result of a fire	No
Did this release result in any injuries	No
Has this release reached or does it have a reasonable probability of reaching a watercourse	No
Has this release endangered or does it have a reasonable probability of endangering public health	No
Has this release substantially damaged or will it substantially damage property or the environment	No
Is this release of a volume that is or may with reasonable probability be detrimental to fresh water	No

Nature and Volume of Release	
<i>Material(s) released, please answer all that apply below. Any calculations or specific justifications for the volumes provided should be attached to the follow-up C-141 submission.</i>	
Crude Oil Released (bbls) Details	Not answered.
Produced Water Released (bbls) Details	Cause: Equipment Failure Tank (Any) Produced Water Released: 180 BBL Recovered: 180 BBL Lost: 0 BBL.
Is the concentration of chloride in the produced water >10,000 mg/l	Yes
Condensate Released (bbls) Details	Not answered.
Natural Gas Vented (Mcf) Details	Not answered.
Natural Gas Flared (Mcf) Details	Not answered.
Other Released Details	Not answered.
Are there additional details for the questions above (i.e. any answer containing Other, Specify, Unknown, and/or Fire, or any negative lost amounts)	FACILITY LOST COMS SO TANK OVERFLOWED INTO LINED CONTAINMENT

Sante Fe Main Office
Phone: (505) 476-3441

General Information
Phone: (505) 629-6116

Online Phone Directory
<https://www.emnrd.nm.gov/ocd/contact-us>

State of New Mexico
Energy, Minerals and Natural Resources
Oil Conservation Division
1220 S. St Francis Dr.
Santa Fe, NM 87505

QUESTIONS, Page 2

Action 598806

QUESTIONS (continued)

Operator: Spur Energy Partners LLC 9655 Katy Freeway Houston, TX 77024	OGRID: 328947
	Action Number: 598806
	Action Type: [C-141] Remediation Closure Request C-141 (C-141-v-Closure)

QUESTIONS

Nature and Volume of Release (continued)	
Is this a gas only submission (i.e. only significant Mcf values reported)	No, according to supplied volumes this does not appear to be a "gas only" report.
Was this a major release as defined by Subsection A of 19.15.29.7 NMAC	Yes
Reasons why this would be considered a submission for a notification of a major release	From paragraph A. "Major release" determine using: (1) an unauthorized release of a volume, excluding gases, of 25 barrels or more.
<i>With the implementation of the 19.15.27 NMAC (05/25/2021), venting and/or flaring of natural gas (i.e. gas only) are to be submitted on the C-129 form.</i>	

Initial Response

The responsible party must undertake the following actions immediately unless they could create a safety hazard that would result in injury.

The source of the release has been stopped	True
The impacted area has been secured to protect human health and the environment	True
Released materials have been contained via the use of berms or dikes, absorbent pads, or other containment devices	True
All free liquids and recoverable materials have been removed and managed appropriately	True
If all the actions described above have not been undertaken, explain why	N/A

Per Paragraph (4) of Subsection B of 19.15.29.8 NMAC the responsible party may commence remediation immediately after discovery of a release. If remediation has begun, please prepare and attach a narrative of actions to date in the follow-up C-141 submission. If remedial efforts have been successfully completed or if the release occurred within a lined containment area (see Subparagraph (a) of Paragraph (5) of Subsection A of 19.15.29.11 NMAC), please prepare and attach all information needed for closure evaluation in the follow-up C-141 submission.

I hereby certify that the information given above is true and complete to the best of my knowledge and understand that pursuant to OCD rules and regulations all operators are required to report and/or file certain release notifications and perform corrective actions for releases which may endanger public health or the environment. The acceptance of a C-141 report by the OCD does not relieve the operator of liability should their operations have failed to adequately investigate and remediate contamination that pose a threat to groundwater, surface water, human health or the environment. In addition, OCD acceptance of a C-141 report does not relieve the operator of responsibility for compliance with any other federal, state, or local laws and/or regulations.

I hereby agree and sign off to the above statement	Name: Katherine Purvis Title: EHS Coordinator Email: katherine.purvis@spurenergy.com Date: 06/24/2026
--	---

Sante Fe Main Office
Phone: (505) 476-3441

General Information
Phone: (505) 629-6116

Online Phone Directory
<https://www.emnrd.nm.gov/ocd/contact-us>

State of New Mexico
Energy, Minerals and Natural Resources
Oil Conservation Division
1220 S. St Francis Dr.
Santa Fe, NM 87505

QUESTIONS, Page 3

Action 598806

QUESTIONS (continued)

Operator: Spur Energy Partners LLC 9655 Katy Freeway Houston, TX 77024	OGRID: 328947
	Action Number: 598806
	Action Type: [C-141] Remediation Closure Request C-141 (C-141-v-Closure)

QUESTIONS

Site Characterization
Please answer all the questions in this group (only required when seeking remediation plan approval and beyond). This information must be provided to the appropriate district office no later than 90 days after the release discovery date.

What is the shallowest depth to groundwater beneath the area affected by the release in feet below ground surface (ft bgs)	Between 75 and 100 (ft.)
What method was used to determine the depth to ground water	OCD Imaging Records Lookup
Did this release impact groundwater or surface water	No
What is the minimum distance, between the closest lateral extents of the release and the following surface areas:	
A continuously flowing watercourse or any other significant watercourse	Greater than 5 (mi.)
Any lakebed, sinkhole, or playa lake (measured from the ordinary high-water mark)	Greater than 5 (mi.)
An occupied permanent residence, school, hospital, institution, or church	Between 1 and 5 (mi.)
A spring or a private domestic fresh water well used by less than five households for domestic or stock watering purposes	Between 1 and 5 (mi.)
Any other fresh water well or spring	Between 500 and 1000 (ft.)
Incorporated municipal boundaries or a defined municipal fresh water well field	Between 1 and 5 (mi.)
A wetland	Between 1/2 and 1 (mi.)
A subsurface mine	Greater than 5 (mi.)
An (non-karst) unstable area	Greater than 5 (mi.)
Categorize the risk of this well / site being in a karst geology	Low
A 100-year floodplain	Between 1 and 5 (mi.)
Did the release impact areas not on an exploration, development, production, or storage site	No

Remediation Plan
Please answer all the questions that apply or are indicated. This information must be provided to the appropriate district office no later than 90 days after the release discovery date.

Requesting a remediation plan approval with this submission	Yes
<i>Attach a comprehensive report demonstrating the lateral and vertical extents of soil contamination associated with the release have been determined, pursuant to 19.15.29.11 NMAC and 19.15.29.13 NMAC.</i>	
Have the lateral and vertical extents of contamination been fully delineated	Yes
Was this release entirely contained within a lined containment area	Yes
<i>Per Subsection B of 19.15.29.11 NMAC unless the site characterization report includes completed efforts at remediation, the report must include a proposed remediation plan in accordance with 19.15.29.12 NMAC, which includes the anticipated timelines for beginning and completing the remediation.</i>	
On what estimated date will the remediation commence	05/24/2026
On what date will (or did) the final sampling or liner inspection occur	05/27/2026
On what date will (or was) the remediation complete(d)	05/27/2026
What is the estimated surface area (in square feet) that will be remediated	5600
What is the estimated volume (in cubic yards) that will be remediated	0

These estimated dates and measurements are recognized to be the best guess or calculation at the time of submission and may (be) change(d) over time as more remediation efforts are completed. The OCD recognizes that proposed remediation measures may have to be minimally adjusted in accordance with the physical realities encountered during remediation. If the responsible party has any need to significantly deviate from the remediation plan proposed, then it should consult with the division to determine if another remediation plan submission is required.

Sante Fe Main Office
Phone: (505) 476-3441

General Information
Phone: (505) 629-6116

Online Phone Directory
<https://www.emnrd.nm.gov/ocd/contact-us>

State of New Mexico
Energy, Minerals and Natural Resources
Oil Conservation Division
1220 S. St Francis Dr.
Santa Fe, NM 87505

QUESTIONS, Page 4

Action 598806

QUESTIONS (continued)

Operator: Spur Energy Partners LLC 9655 Katy Freeway Houston, TX 77024	OGRID: 328947
	Action Number: 598806
	Action Type: [C-141] Remediation Closure Request C-141 (C-141-v-Closure)

QUESTIONS

Remediation Plan (continued)	
<i>Please answer all the questions that apply or are indicated. This information must be provided to the appropriate district office no later than 90 days after the release discovery date.</i>	
This remediation will (or is expected to) utilize the following processes to remediate / reduce contaminants:	
<i>(Select all answers below that apply.)</i>	
Is (or was) there affected material present needing to be removed	No
Is (or was) there a power wash of the lined containment area (to be) performed	Yes
OTHER (Non-listed remedial process)	No
<i>Per Subsection B of 19.15.29.11 NMAC unless the site characterization report includes completed efforts at remediation, the report must include a proposed remediation plan in accordance with 19.15.29.12 NMAC, which includes the anticipated timelines for beginning and completing the remediation.</i>	
I hereby certify that the information given above is true and complete to the best of my knowledge and understand that pursuant to OCD rules and regulations all operators are required to report and/or file certain release notifications and perform corrective actions for releases which may endanger public health or the environment. The acceptance of a C-141 report by the OCD does not relieve the operator of liability should their operations have failed to adequately investigate and remediate contamination that pose a threat to groundwater, surface water, human health or the environment. In addition, OCD acceptance of a C-141 report does not relieve the operator of responsibility for compliance with any other federal, state, or local laws and/or regulations.	
I hereby agree and sign off to the above statement	Name: Katherine Purvis Title: EHS Coordinator Email: katherine.purvis@spurenergy.com Date: 06/24/2026
<i>The OCD recognizes that proposed remediation measures may have to be minimally adjusted in accordance with the physical realities encountered during remediation. If the responsible party has any need to significantly deviate from the remediation plan proposed, then it should consult with the division to determine if another remediation plan submission is required.</i>	

Sante Fe Main Office
Phone: (505) 476-3441

General Information
Phone: (505) 629-6116

Online Phone Directory
<https://www.emnrd.nm.gov/ocd/contact-us>

State of New Mexico
Energy, Minerals and Natural Resources
Oil Conservation Division
1220 S. St Francis Dr.
Santa Fe, NM 87505

QUESTIONS, Page 6

Action 598806

QUESTIONS (continued)

Operator: Spur Energy Partners LLC 9655 Katy Freeway Houston, TX 77024	OGRID: 328947
	Action Number: 598806
	Action Type: [C-141] Remediation Closure Request C-141 (C-141-v-Closure)

QUESTIONS

Liner Inspection Information	
Last liner inspection notification (C-141L) recorded	587884
Liner inspection date pursuant to Subparagraph (a) of Paragraph (5) of Subsection A of 19.15.29.11 NMAC	05/27/2026
Was all the impacted materials removed from the liner	Yes
What was the liner inspection surface area in square feet	5600

Remediation Closure Request	
<i>Only answer the questions in this group if seeking remediation closure for this release because all remediation steps have been completed.</i>	
Requesting a remediation closure approval with this submission	Yes
Have the lateral and vertical extents of contamination been fully delineated	Yes
Was this release entirely contained within a lined containment area	Yes
What was the total surface area (in square feet) remediated	5600
What was the total volume (cubic yards) remediated	0
Summarize any additional remediation activities not included by answers (above)	The lined containment was power-washed, and all standing fluids were recovered using a vacuum truck. Following remediation, a liner inspection was conducted, confirming that the containment liner maintained its integrity.

The responsible party must attach information demonstrating they have complied with all applicable closure requirements and any conditions or directives of the OCD. This demonstration should be in the form of a comprehensive report (in .pdf format) including a scaled site map, sampling diagrams, relevant field notes, photographs of any excavation prior to backfilling, laboratory data including chain of custody documents of final sampling, and a narrative of the remedial activities. Refer to 19.15.29.12 NMAC.

I hereby certify that the information given above is true and complete to the best of my knowledge and understand that pursuant to OCD rules and regulations all operators are required to report and/or file certain release notifications and perform corrective actions for releases which may endanger public health or the environment. The acceptance of a C-141 report by the OCD does not relieve the operator of liability should their operations have failed to adequately investigate and remediate contamination that pose a threat to groundwater, surface water, human health or the environment. In addition, OCD acceptance of a C-141 report does not relieve the operator of responsibility for compliance with any other federal, state, or local laws and/or regulations. The responsible party acknowledges they must substantially restore, reclaim, and re-vegetate the impacted surface area to the conditions that existed prior to the release or their final land use in accordance with 19.15.29.13 NMAC including notification to the OCD when reclamation and re-vegetation are complete.

I hereby agree and sign off to the above statement	Name: Katherine Purvis Title: EHS Coordinator Email: katherine.purvis@spurenergy.com Date: 06/24/2026
--	---

Sante Fe Main Office
Phone: (505) 476-3441

General Information
Phone: (505) 629-6116

Online Phone Directory
<https://www.emnrd.nm.gov/ocd/contact-us>

State of New Mexico
Energy, Minerals and Natural Resources
Oil Conservation Division
1220 S. St Francis Dr.
Santa Fe, NM 87505

CONDITIONS

Action 598806

CONDITIONS

Operator: Spur Energy Partners LLC 9655 Katy Freeway Houston, TX 77024	OGRID: 328947
	Action Number: 598806
	Action Type: [C-141] Remediation Closure Request C-141 (C-141-v-Closure)

CONDITIONS

Created By	Condition	Condition Date
rhamlet	We have received your Remediation Closure Report for Incident #nAPP2613146070 RONCO FEDERAL 1 SWB, thank you. This Remediation Closure Report is approved.	6/24/2026