

Second Quarter 2026 Monitoring Report

Armstrong Energy Corporation – West Pearl Queen Site
Unit B of Section 32, Township 19 South, Range 35 East, NMPM
NMOCD Reference: NOY1816446096

Submitted June 17, 2026 to the New Mexico Energy, Minerals and Natural Resources
Department – Oil Conservation Division on Behalf of:

Armstrong Energy Corporation
PO Box 1973
Roswell, New Mexico 88202-1973



2904 W 2nd St.
Roswell, NM 88201
voice: 575.624.2420
fax: 575.624.2421
www.atkinseng.com

Contents

List of Tables and Figures

1	Introduction.....	1
1.1	Scope of Work.....	1
1.2	Deviations from the Approved Work.....	1
2	Monitoring Event.....	1
2.1	Water Elevation Measurements	1
2.2	Water Sampling.....	2
3	Analytical Results	3
3.1	Laboratory and Field Quality Control.....	3
3.1.1	EPA Method 8260B and 300.0	3
4	Trends, Conclusions and Recommendations	6
4.1	Trends or Changes in Site Conditions.....	6
4.2	Conclusions	7

Appendix A: Figures and Tables

Appendix B: Field Datasheets

Appendix C: Envirotech Analysis Laboratory Datasheets

List of Tables and Figures

Table 1: May 2026 Analytical Results Summary

Figure 1. Hydrograph

Figure 2. Benzene Concentration vs. Time ($\mu\text{g/L}$)

Figure 3. Logarithmic Methylene Chloride Concentration vs. Time ($\mu\text{g/L}$)

Figure 4. Logarithmic Chloride Concentration vs. Time (mg/L)

Table A1. Water Elevation Data

Table A2. Field Parameter Data

Table A3. Aqueous Analytical Results – Contaminants of Concern

Figure A1. Site Map

Figure A2. Water Elevation Map

Figure A3. Distribution of Chloride and Select VOCs in water

.

Statement of Familiarity

I, the undersigned, am personally familiar with the information submitted in this report and the attached documents and attest that it is true and complete to the best of my knowledge.

Jessica L Atkins

Jessica L. Atkins, PE
Atkins Engineering Associates, Inc.

June 17, 2026

Date

1 Introduction

Atkins Engineering Associates, Inc. (AEA), on behalf of Armstrong Energy Corporation, is pleased to provide the Second Quarter 2026 Monitoring Report for the Armstrong Energy Corporation West Pearl Queen (WPQ) site, located in the NE/4NW/4NE/4 Section 32, Township 19 South, Range 35 East, NMPM, in Lea County New Mexico. The site is located at approximately 32.62295554°N, -103.4757431°E, at a general altitude of 3,736 feet above mean sea level, as shown on the USGS Topographic map.

1.1 Scope of Work

On February 25, 2026, AEA submitted a workplan outlining the continued monitoring of water at the WPQ site (Site). This report was approved by the New Mexico Energy, Minerals and Natural Resources Department – Oil Conservation District on June 11, 2026.

This report documents the activities and results of the May 2026 monitoring event, which included water-level measurements in five (5) wells (MW-2, MW-5R, MW-7R, MW-14, and MW-24) and sample collection for analysis of volatile organic compounds (VOCs) by EPA Method 8260B and chlorides by EPA Method 300.1.

1.2 Deviations from the Approved Work

Monitoring well MW-2 was found dry; therefore, a water elevation measurement or samples for laboratory analysis were not obtained. Additionally, the water column in MW-14 was insufficient to permit sample collection in accordance with the procedures outlined in the work plan. As a result, a grab sample was collected from MW-14 for laboratory analysis. No other deviations from the approved scope of work occurred.

2 Monitoring Event

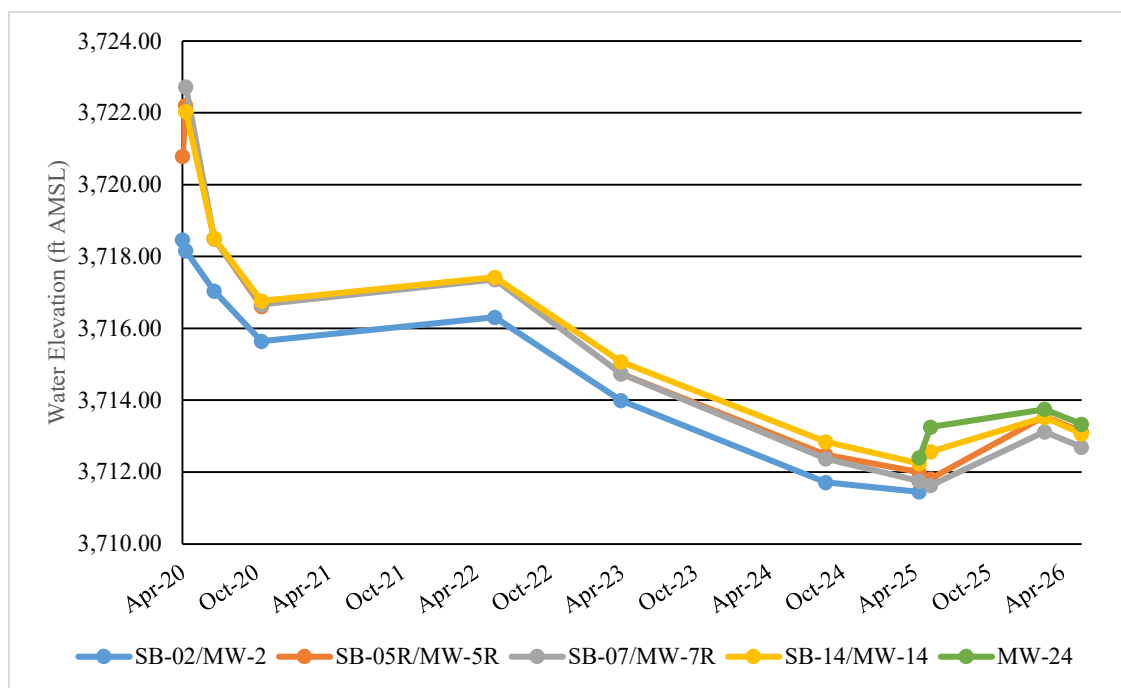
The field work activities are in the following sections.

2.1 Water Elevation Measurements

On May 26, 2026, the water levels and height of water columns were measured in MW-2, MW-5R, MW-7R, MW-14, and MW-24 using a decontaminated interface probe. Measuring points for each well were the top of casing (TOC), north edge. The measured depths to water ranged from 25.11 feet below the top of casing (BTC) in well MW-5R to 27.73 feet BTC in well MW-2.

TOC elevations were established in March 2025 and are presented in Table A1, Appendix A, along with historic depth to water and water elevations to present. A Hydrograph, Figure 1, was created utilizing historic depth to water data.

Figure 1: Hydrograph (ft AMSL)



The May 2026 water level measurements indicate an average decrease of approximately 0.43 feet across the site relative to the first quarter of 2026. When evaluated over the long-term monitoring period, from April 2020 to present, water elevations show an overall declining trend.

A potentiometric surface map (Figure A2) depicts the water table elevations across the site. The general water flow direction is to the south-southwest, with an estimated hydraulic gradient of approximately 0.0077 ft/ft, based on water-level data from monitoring wells MW-24 and MW-7R.

2.2 Water Sampling

On May 26, 2026, water sampling was conducted at monitoring wells MW-5R, MW-7R, and MW-24, each of which contained sufficient water for purging and sample collection. Monitoring well MW-2 was dry; therefore, field parameters were not measured, and no samples were collected for analysis. Monitoring well MW-14 dewatered during bailing, precluding measurement of field parameters; however, a grab sample was collected for analysis. Each well with sufficient water was purged by removing at least three (3) well volumes with new 2-inch disposable bailers, and field water-quality parameters were measured after each-one-well-volume purge using a submersible YSI probe. These parameters were recorded at the time of sampling collection, and all purged water was disposed of within the property boundaries.

During the sampling event, specific conductivities ranged from 2,707 $\mu\text{S}/\text{cm}$ to 12,287 $\mu\text{S}/\text{cm}$; pH ranged from 7.39 to 7.95; and oxidation-reduction potential (ORP) ranged from 17.6 and 25.8 mV. Dissolved oxygen (DO) was 0.08 mg/L in MW-7R and 0.09 mg/L in MW-5R and MW-24. These field parameter results are presented in Table A2, and field datasheets are provided in Appendix B.

After purging, water samples were collected using 2-inch disposable bailers. To minimize volatilization and ensure sample integrity, new dedicated, disposable, polyethylene bottom-emptying devices were used to transfer water from the bailers into laboratory-provided containers. Each sample was immediately labeled and placed in a cooler on ice. A trip blank was included, and a field duplicate sample was collected (from well MW-7R, labeled “Duplicate 1”). All samples, including the duplicate and trip blank, were sealed in a laboratory-supplied cooler on ice and delivered under chain-of-custody to Envirotech Analytical Laboratory in Farmington, New Mexico. The samples were analyzed for the full range of VOCs by EPA Method 8260B and for chlorides by EPA Method 300.1.

3 Analytical Results

The following section details the water sampling results.

3.1 Laboratory and Field Quality Control

Water samples were received by Envirotech Analytical Laboratory within applicable temperature and holding-time requirements. The trip blank and duplicate sample results were consistent, and AEA identified no data quality concerns associated with the analytical results.

3.1.1 EPA Method 8260B and 300.0

The May 2026 analytical results are summarized in Table 1.

Table 1. May 2026 Analytical Results Summary

Well ID	Benzene ($\mu\text{g}/\text{L}$)	Toluene ($\mu\text{g}/\text{L}$)	Ethylbenzene ($\mu\text{g}/\text{L}$)	Total Xylenes ($\mu\text{g}/\text{L}$)	Methylene Chloride ($\mu\text{g}/\text{L}$)	Chlorides (mg/L)
MW-5R	1.13	<1.00	<1.00	<1.00	<2.00	5,340
MW-7R	<1.00	<1.00	<1.00	<1.00	<2.00	358
MW-14	<1.00	<1.00	<1.00	<1.00	<2.00	746
MW-24	3.11	<1.00	<1.00	<1.00	39.3	24,600

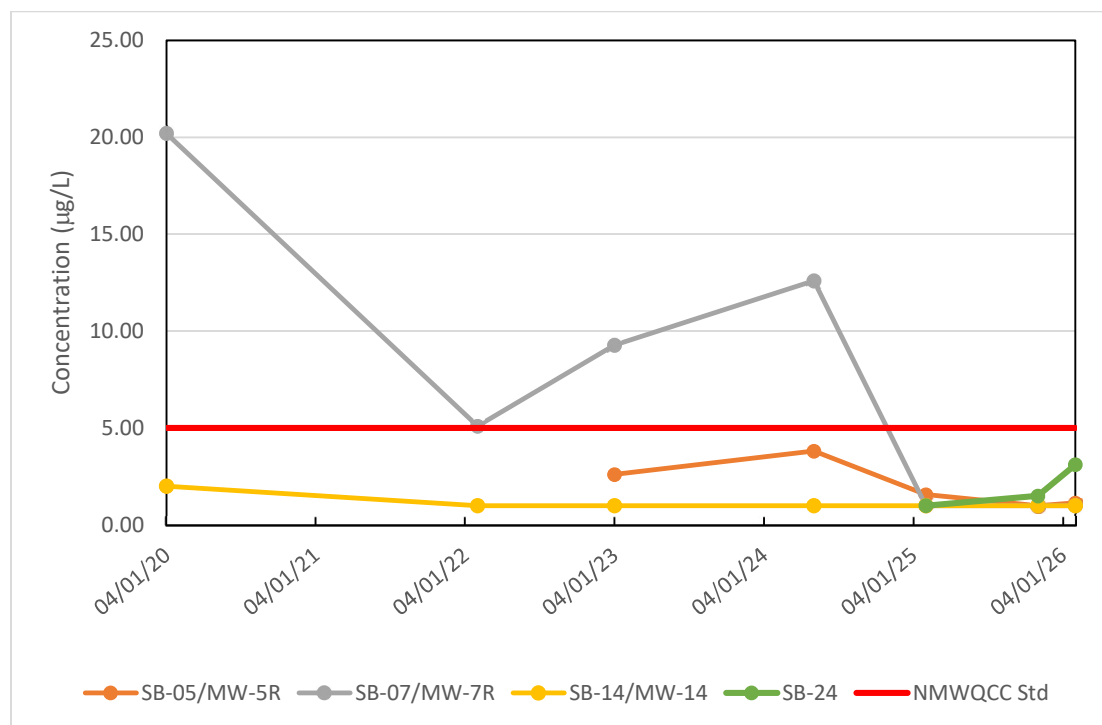
1. Concentrations exceeding NMWQCC standards indicated by red text.

3.1.1.1 Benzene

During the May 2026 monitoring event, benzene was detected in monitoring wells MW-5R and MW-24 at concentrations below the New Mexico Water Quality Control Commission (NMWQCC) standard of 5.0 µg/L. No exceedances were observed in the remaining sampled wells.

Figure 2 illustrates historical benzene concentration trends from legacy site monitoring wells alongside current results from active wells MW-5R, MW-7R, and MW-24, compared to the 5.0 µg/L NMWQCC standard. Non-detect (ND) results are plotted at the laboratory reporting limit (RL).

Figure 1: Benzene Concentration Versus Time

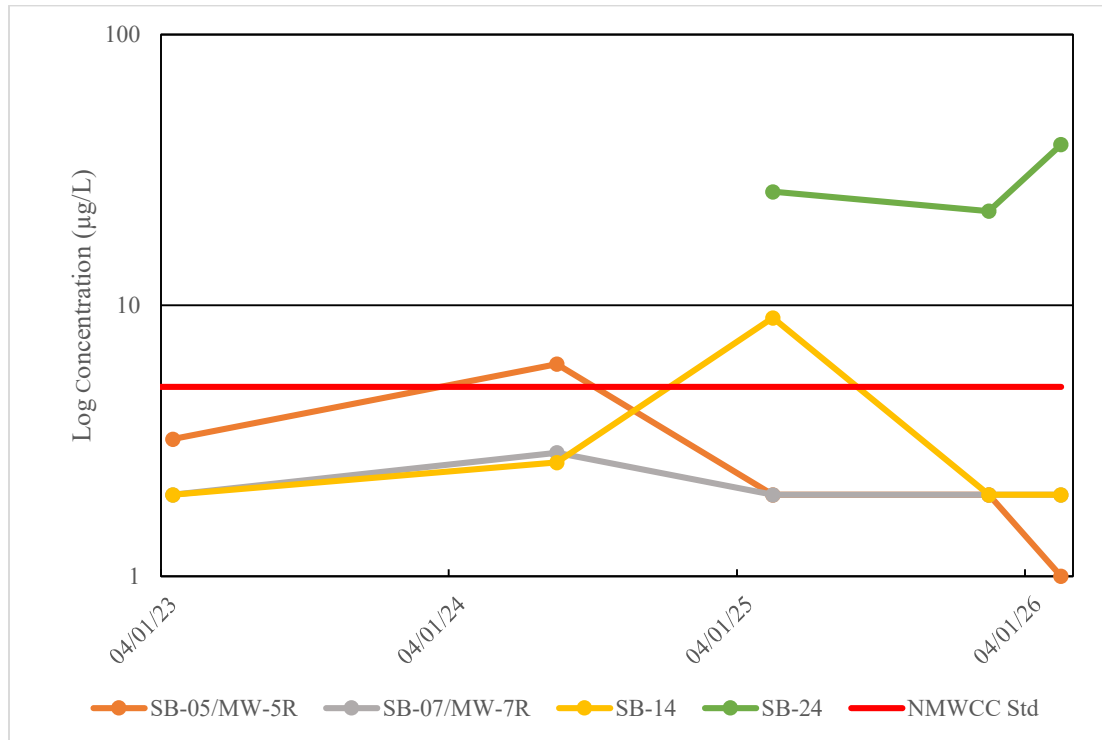


3.1.1.2 Methylene chloride

Methylene chloride was detected in monitoring well MW-24 at a concentration exceeding the NMWQCC standard of 5.0 µg/L. Historically, methylene chloride concentrations exceeding the regulatory standard have been associated with wells exhibiting substantially elevated chloride concentrations. This pattern was observed again during the May 2026 monitoring event at MW-24, which reported a chloride concentration of 24,600 mg/L.

Figure 3 presents historical and current logarithmic methylene chloride concentrations for active wells MW-5R, MW-7R, MW-14, and MW-24 relative to the NMWQCC standard. Non-detect results are plotted at the laboratory reporting limit (RL).

Figure 2: Logarithmic Methylene Chloride Concentration Versus Time

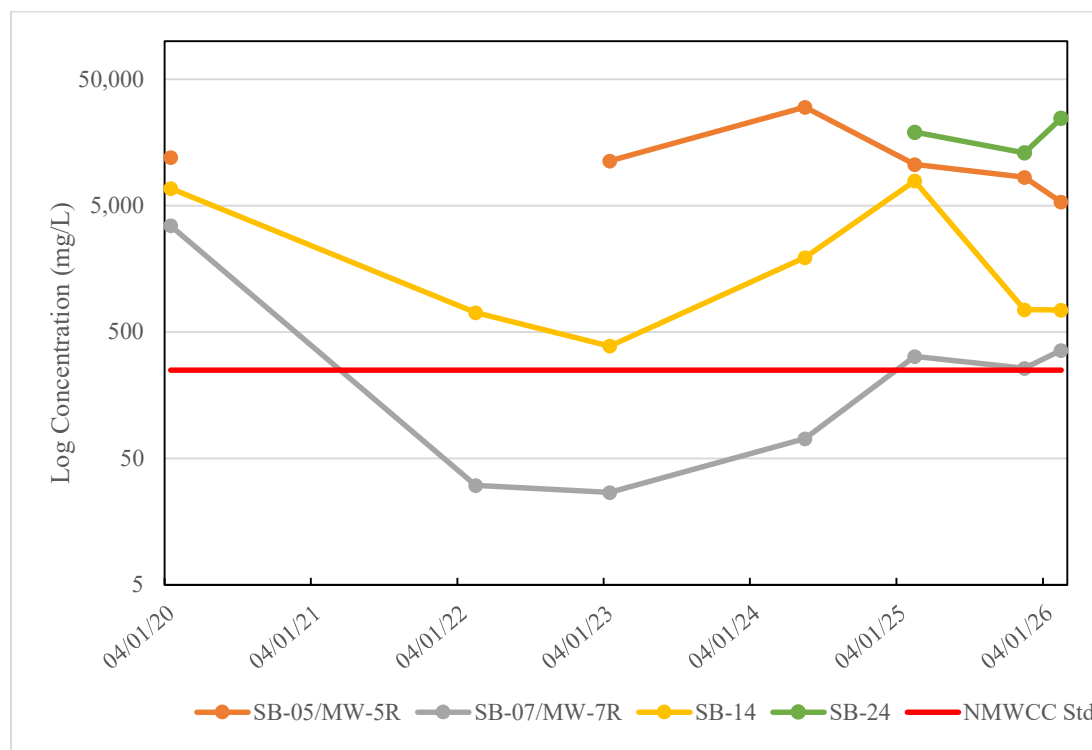


3.1.1.3 Chloride

During the May 2026 monitoring event, chloride concentrations exceeded the NMWQCC standard of 250 mg/L in all sampled wells. These concentrations ranged from 358 mg/L (in MW-7R) to 24,600 mg/L (in MW-24).

Figure 4 presents historical and current chloride concentrations on a logarithmic scale for wells MW-5R, MW-7R, and MW-24, relative to the 250 mg/L standard. Non-detect (ND) results are plotted at the laboratory reporting limit (RL).

Figure 4: Logarithmic Chloride Concentration Versus Time



Historical water analytical results for selected contaminants of concern are tabulated in Table A3. Figure A2 presents the chloride and methylene chloride detections from the May 2026 monitoring event. Laboratory data sheets and chain-of-custody documentation are provided in Appendix C.

4 Trends, Conclusions and Recommendations

4.1 Trends or Changes in Site Conditions

During the May 2026 monitoring event, the following trends and changes were observed:

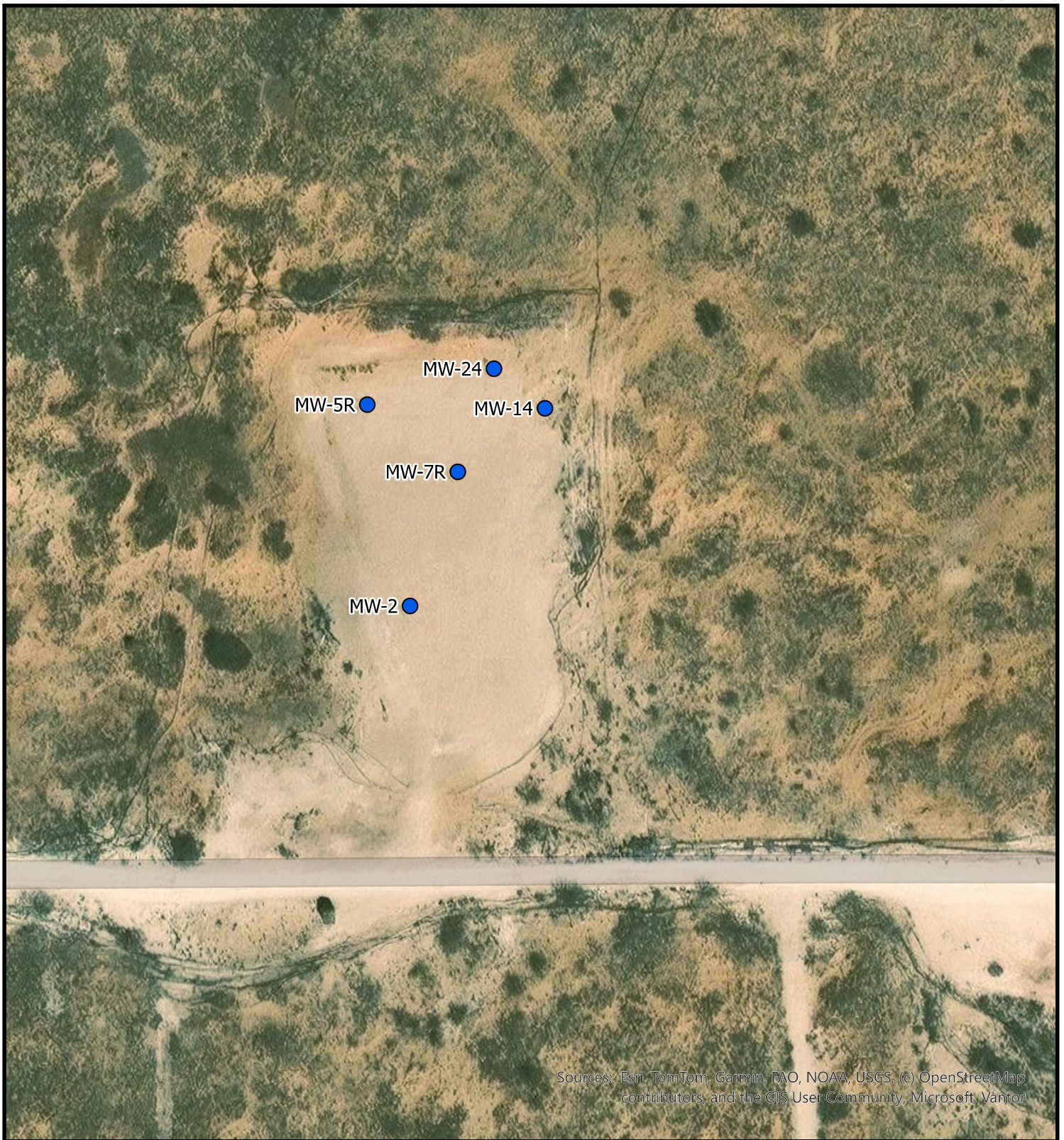
- The water elevation decreased by an average of 0.43 feet across the site relative to the February 2026 measurements.
- When evaluated over the monitoring period from April 2020 to present, the overall water elevation trend is declining.
- Monitoring well MW-2 was dry; therefore, field parameters were not measured, and no samples were collected for analysis.
- Monitoring well MW-14 dewatered during precluding measurement of field parameters.
- Benzene detected in monitoring wells MW-5R and MW-24 was below the NMWQCC standard.

- Chloride concentrations exceeded the NMWQCC standard in all sampled wells.
- Methylene chloride concentrations exceeding the NMWQCC standard have historically been associated with wells exhibiting substantially elevated chloride concentrations. THIS relationship was observed during the May 2026 monitoring event in MW-24, which reported a chloride concentration of 24,600 mg/L.

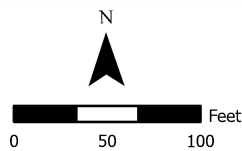
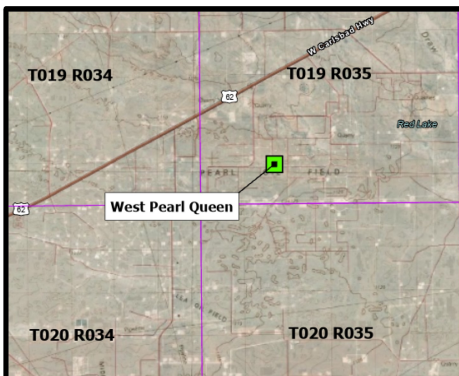
4.2 Conclusions

The decrease in water elevations observed since the previous monitoring event is consistent with the long-term declining trend documented since April 2020. AEA recommends continued quarterly water monitoring, as outlined in the February 25, 2026 work plan, to evaluate ongoing changes in water conditions at the site.

Appendix A: Tables and Figures



Sources: Esri, TomTom, Garmin, FAO, NOAA, USGS, (c) OpenStreetMap contributors, and the GIS User Community, Microsoft, Vantor



Mapped Features

- Monitor Wells

Figure A1. Site Location

West Pearl Queen

May 26, 2026

Section 32, Township 19 South, Range 35 East, NMPM
32.6227519° N, -103.475610089° E

Drawn: GMC Reviewed: JLA Date: June 2026





Sources: Esri, TomTom, Garmin, FAO, NOAA, USGS, (c) OpenStreetMap contributors, and the GIS User Community, Microsoft, Vantor

Mapped Features

- Monitor Wells
- 2026-05-26_Contours-02ft

N

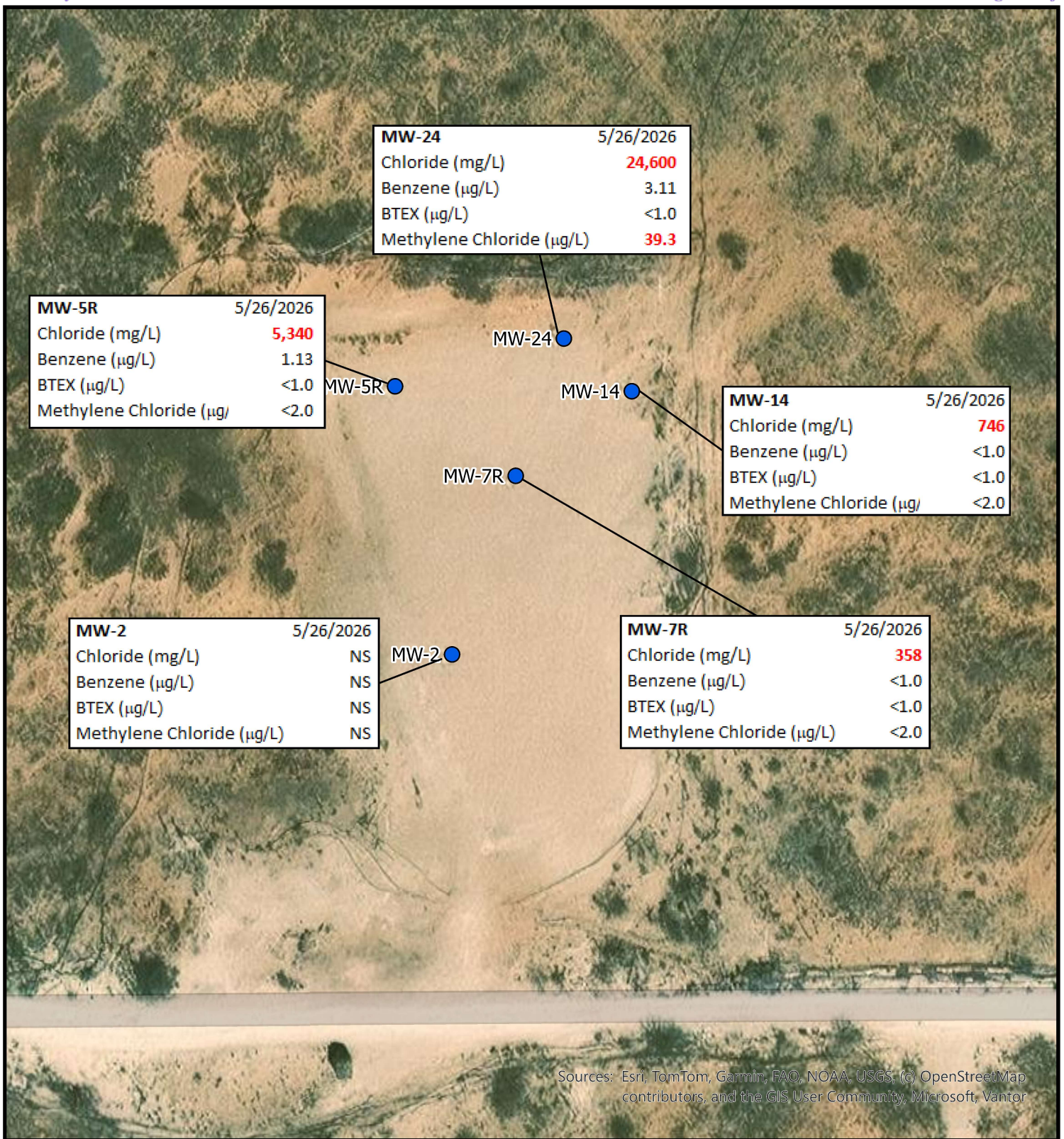
0 50 100 Feet

**Figure A2. Water Elevation Map
West Pearl Queen
May 26, 2026**

Section 32, Township 19 South, Range 35 East, NMPPM
32.6227519° N, -103.475610089° E

Drawn: GMC Reviewed: JLA Date: June 2026

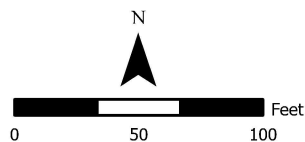
Atkins
ENGINEERING ASSOCIATES



Sources: Esri, TomTom, Garmin, FAO, NOAA, USGS, (c) OpenStreetMap contributors, and the GIS User Community, Microsoft, Vantor

Mapped Features

● Monitor Wells



Notes

1. Concentrations exceeding NMWQCC Standards are indicated by red text.
2. BTEX is Benzene, Toluene, Ethylbenzene, Total Xylenes.
3. NS denotes well not sampled. MW-2 found dry on 02/23/2026.

Figure A3. Distribution of Chloride and Select VOCs in water

West Pearl Queen

May 26, 2026

Section 32, Township 19 South, Range 35 East, NMPM
32.6227519° N, -103.475610089° E

Drawn: GMC Reviewed: JLA Drawn: June 2026



Table A1: Water Elevation Data2nd Quarter 2026

West Pearl Queen Site, Unit B of Section 32, Township 19 South, Range 35 East, NMPM

NMOSE Well POD Number	Well ID	Date	TOC Elevation (ft)	Total Depth (ft)	Depth To Water (ft)	Water Level Elevation (ft)	▲WLE (ft)	Overall ▲WLE (ft)	Water Column Length (ft)
SB-02		04/08/20	3736.29	--	17.82	3718.47	--	--	--
SB-02		04/16/20	3736.29	--	18.13	3718.16	-0.31	--	--
SB-02		06/26/20	3736.29	--	19.25	3717.04	-1.12	--	--
SB-02		10/22/20	3736.29	--	20.65	3715.64	-1.40	--	--
SB-02		05/26/22	3736.29	25.37	19.98	3716.31	0.67	--	5.39
SB-02		04/05/23	3736.29	25.52	22.30	3713.99	-2.32	-4.48	3.22
SB-02		08/27/24	3736.29	25.33	24.58	3711.71	-2.28	-6.76	0.75
L-14876 POD-2	MW-2	04/17/25	3739.31	28.45	27.86	3711.45	-0.26	-7.02	0.59
L-14876 POD-2	MW-2	05/15/25	3739.31	28.50	Dry	--	--	--	--
L-14876 POD-2	MW-2	02/23/26	3739.31	28.07	Dry	--	--	--	--
L-14876 POD-2	MW-2	05/26/26	3739.31	28.07	Dry	--	--	--	--
SB-04		04/08/20	3734.71	--	16.85	3717.86	--	--	--
SB-04		06/26/20	3734.71	--	16.30	3718.41	0.55	--	--
SB-04		10/22/20	3734.71	--	18.09	3716.62	-1.79	--	--
SB-04		05/26/22	3734.71	21.90	17.40	3717.31	0.69	--	4.50
SB-04		04/05/23	3734.71	22.40	19.91	3714.80	-2.51	-3.06	2.49
SB-04		08/27/24	3734.71	22.27	21.68	3713.03	-1.77	-4.83	0.59
SB-04		Plugged 10/08/2024							
SB-05		04/08/20	3736.17	--	15.38	3720.79	--	--	--
SB-05		04/16/20	3736.17	--	13.96	3722.21	1.42	--	--
SB-05		06/26/20	3736.17	--	17.67	3718.50	-3.71	--	--
SB-05		10/22/20	3736.17	--	19.56	3716.61	-1.89	--	--
SB-05		05/26/22	3736.17	11.20	Dry	--	--	--	--
SB-05		04/05/23	3736.17	26.64	21.43	3714.74	-1.87	--	5.21
SB-05		08/27/24	3736.17	26.52	23.69	3712.48	-2.26	-4.13	2.83
SB-05		Plugged 10/08 -1/11/2024							

Table A1: Water Elevation Data2nd Quarter 2026

West Pearl Queen Site, Unit B of Section 32, Township 19 South, Range 35 East, NMPM

NMOSE Well POD Number	Well ID	Date	TOC Elevation (ft)	Total Depth (ft)	Depth To Water (ft)	Water Level Elevation (ft)	▲WLE (ft)	Overall ▲WLE (ft)	Water Column Length (ft)
L-15833 POD-1	MW-5R	04/17/25	3738.23	28.65	26.23	3712.00	--	--	--
L-15833 POD-1	MW-5R	05/15/25	3738.23	28.70	26.42	3711.81	-0.19	-8.98	2.28
L-15833 POD-1	MW-5R	02/23/26	3738.23	28.65	24.68	3713.55	1.74	-7.24	3.97
L-15833 POD-1	MW-5R	05/26/26	3738.23	28.66	25.11	3713.12	-0.43	-7.67	3.55
SB-07		04/16/20	3732.36	--	9.63	3722.73	--	--	--
SB-07		06/26/20	3732.36	--	13.86	3718.50	-4.23	--	--
SB-07		10/22/20	3732.36	--	15.69	3716.67	-1.83	--	--
SB-07		05/26/22	3732.36	19.10	15.00	3717.36	0.69	--	4.10
SB-07		04/05/23	3732.36	19.20	17.62	3714.74	-2.62	--	1.58
SB-07		08/27/24	3732.36	22.13	19.99	3712.37	-2.37	-4.99	2.14
SB-07		Plugged 10/08/2024							
L-15833 POD-2	MW-7R	04/17/25	3737.98	27.84	26.23	3711.75	--	--	--
L-15833 POD-2	MW-7R	05/15/25	3737.98	27.90	26.35	3711.63	-0.12	-11.10	1.55
L-15833 POD-2	MW-7R	02/23/26	3737.98	27.85	24.86	3713.12	1.49	-9.61	2.99
L-15833 POD-2	MW-7R	05/26/26	3737.98	27.85	25.29	3712.69	-0.43	-10.04	2.56
SB-13		04/16/20	3737.91	--	15.57	3722.34	--	--	--
SB-13		06/26/20	3737.91	--	20.15	3717.76	-4.58	--	--
SB-13		10/22/20	3737.91	--	21.82	3716.09	-1.67	--	--
SB-13		05/26/22	3737.91	27.10	21.05	3716.86	0.77	--	6.05
SB-13		04/05/23	3737.91	27.20	23.62	3714.29	-2.57	--	3.58
SB-13		08/27/24	3737.91	27.03	25.88	3712.03	-2.26	-10.31	1.15
SB-13		Plugged 10/08/2024							
SB-14		04/16/20	3738.27	--	16.23	3722.04	--	--	--
SB-14		06/26/22	3738.27	--	19.76	3718.51	-3.53	--	--
SB-14		10/22/22	3738.27	--	21.51	3716.76	-1.75	--	--
SB-14		05/26/22	3738.27	27.07	20.85	3717.42	0.66	-4.62	6.22
SB-14		04/05/23	3738.27	27.00	23.20	3715.07	-2.35	-6.97	3.80

Table A1: Water Elevation Data2nd Quarter 2026

West Pearl Queen Site, Unit B of Section 32, Township 19 South, Range 35 East, NMPM

NMOSE Well POD Number	Well ID	Date	TOC Elevation (ft)	Total Depth (ft)	Depth To Water (ft)	Water Level Elevation (ft)	▲ WLE (ft)	Overall ▲ WLE (ft)	Water Column Length (ft)
SB-14		08/27/24	3738.27	27.05	25.43	3712.84	-2.23	-9.20	1.62
L-14876 POD-14	MW-14	04/17/25	3738.27	27.03	26.03	3712.24	-0.60	-9.80	1.00
L-14876 POD-14	MW-14	05/15/25	3738.27	27.06	25.70	3712.57	0.33	-9.47	1.36
L-14876 POD-14	MW-14	02/23/26	3738.27	27.06	24.75	3713.52	0.95	-8.52	2.31
L-14876 POD-14	MW-14	05/26/26	3738.27	26.79	25.20	3713.07	-0.45	-8.97	1.59
SB-20		05/26/22	3741.11	60.20	24.70	3716.41	--	--	--
SB-20		04/05/23	3741.11	60.25	25.90	3715.21	-1.20	--	--
SB-20		08/27/24	3741.11	60.22	27.23	3713.88	-1.33	-2.53	32.99
SB-20		Plugged 10/08 -1/11/2024							
SB-21		05/26/22	3737.92	60.20	30.02	3707.90	--	--	--
SB-21		04/05/23	3737.92	60.20	30.20	3707.72	-0.18	--	--
SB-21		08/27/24	3737.92	60.18	31.02	3706.90	-0.82	-1.00	29.16
SB-21		Plugged 10/08 -1/11/2024							
SB-22		05/26/22	3740.48	60.18	29.08	3711.40	--	--	--
SB-22		04/05/23	3740.48	60.30	29.43	3711.05	-0.35	--	--
SB-22		08/27/24	3740.48	41.15	31.12	3709.36	-1.69	-2.04	10.03
SB-22		Plugged 10/08 -1/11/2024							
SB-23		05/26/22	3736.30	61.25	23.96	3712.34	--	--	--
SB-23		04/05/23	3736.30	61.20	25.40	3710.90	-1.44	--	--
SB-23		08/27/24	3736.30	61.15	27.24	3709.06	-1.84	-3.28	33.91
SB-23		Plugged 10/08 -1/11/2024							
L-15833 POD-3	MW-24	04/17/25	3738.25	28.80	25.85	3712.40	--	--	2.95
L-15833 POD-3	MW-24	05/15/25	3738.25	28.95	25.00	3713.25	0.85	0.85	3.95
L-15833 POD-3	MW-24	02/23/26	3738.25	28.90	24.50	3713.75	0.50	1.35	4.40
L-15833 POD-3	MW-24	05/26/26	3738.25	28.69	24.92	3713.33	-0.42	0.93	3.77

Notes:

1. Elevations referenced to NAVD 88, derived from GPS observations tied to NGS Benchmark "R 97" 6 (Orthometric Height = 3894.17 ft).
2. TOC = Top of Casing; all well measurements taken at the north side of casing.
3. Average water elevation change since last monitoring event: **-0.43**

Table A2: Field Parameter Data2nd Quarter 2026

West Pearl Queen Site, Unit B of Section 32, Township 19 South, Range 35 East, NMPM

NMOSE Well POD Number	Well ID	Date	pH	Temperature (C°)	Specific Conductivity (µS/cm)	DO (mg/L)	ORP (mV)
SB-02		08/27/24	NM - Well dewatered before stabilization occurred				
SB-2		04/17/25	NM - Well dewatered before stabilization occurred				
L-14876 POD-02	MW-2	05/15/25	NM - Dry well				
L-14876 POD-02	MW-2	02/23/26	NM - Dry well				
L-14876 POD-02	MW-2	05/26/26	NM - Well dewatered before stabilization occurred				
SB-04		08/27/24	NM - Well dewatered before stabilization occurred.				
SB-04			Plugged 10/08/2024				
SB-05		08/27/24	NM - Well dewatered before stabilization occurred.				
SB-05			Plugged 10/08 -1/11/2024				
L-15833 POD-1	MW-5R	04/17/25	7.30	20.0	22783	0.53	81.6
L-15833 POD-1	MW-5R	05/15/25	7.08	18.2	25760	1.95	-70.9
L-15833 POD-1	MW-5R	02/23/26	7.81	19.9	5252	0.06	13.3
L-15833 POD-1	MW-5R	05/26/26	7.84	20.1	12287	0.09	18.6
SB-07		08/27/24	NM - Well dewatered before stabilization occurred; hydrocarbon odor				
SB-07			Plugged 10/08/2024				
L-15833 POD-2	MW-7R	04/17/25	7.99	19.2	2277	0.61	-35.9
L-15833 POD-2	MW-7R	05/15/25	7.97	17.9	2442	0.84	-59
L-15833 POD-2	MW-7R	02/23/26	7.86	19.1	2552	0.06	6.7
L-15833 POD-2	MW-7R	05/26/26	7.95	19.0	2707	0.08	17.6
SB-13		08/27/24	NM - Well dewatered before stabilization occurred				
SB-13			Plugged 10/08/2024				
SB-14		08/27/24	NM - Well dewatered before stabilization occurred				
L-14876 POD-14	MW-14	04/17/25	7.50	19.4	6540	0.83	-32.6
L-14876 POD-14	MW-14	05/15/25	NM - Well dewatered before stabilization occurred				
L-14876 POD-14	MW-14	02/23/26	NM - Well dewatered before stabilization occurred				
L-14876 POD-14	MW-14	05/26/26	NM - Well dewatered before stabilization occurred				
SB-20		08/27/24	9.30	19.9	11632	0.08	-157.10
SB-20			Plugged 10/08 -1/11/2024				
SB-21		08/27/24	9.56	20.4	78780	0.08	162.0
SB-21			Plugged 10/08 -1/11/2024				

Table A2: Field Parameter Data

2nd Quarter 2026

West Pearl Queen Site, Unit B of Section 32, Township 19 South, Range 35 East, NMPM

NMOSE Well POD Number	Well ID	Date	pH	Temperature (C°)	Specific Conductivity (µS/cm)	DO (mg/L)	ORP (mV)	
SB-22		08/27/24	8.81	21.2	112071	0.07	110.9	
SB-22		Plugged 10/08 -1/11/2024						
SB-23		08/27/24	10.21	22.0	25205	0.09	162.3	
SB-23		Plugged 10/08 -1/11/2024						
L-15833 POD-3	MW-24	04/17/25	7.00	19.7	46826	0.48	-31.2	
L-15833 POD-3	MW-24	05/15/25	6.91	18.0	43657	1.51	27.8	
L-15833 POD-3	MW-24	02/23/26	7.22	19.1	28540	0.05	37.1	
L-15833 POD-3	MW-24	05/26/26	7.39	19.8	4407	0.09	25.8	

Notes:

NM = Not Measured.

Table A3: Aqueous Analytical Results - Contaminants of Concern2nd Quarter 2026

West Pearl Queen Site, Unit B of Section 32, Township 19 South, Range 35 East, NMPM

NMOSE Well POD Well ID Number	Date	Benzene (µg/L)	Toluene (µg/L)	Ethyl Benzene (µg/L)	Total Xylenes (µg/L)	Methylene Chloride (µg/L)	GRO (mg/L)	DRO (mg/L)	ORO (mg/L)	Chloride (mg/L)	Nitrates (mg/L)	Sampler
NMQCC Standard		5.0	1,000	700	620	5.0	100	100	100	250	10	--
SB-02	04/16/20	<2.0	<2.0	<2.0	<2.0	--	<2.50	<2.50	<2.50	1,810	--	HRL
SB-02	05/26/22	<1.00	<1.00	<1.00	<1.00	--	<0.100	<1.00	<2.00	112	--	AEA
SB-02	04/05/23	<1.00	<1.00	<1.00	<1.00	<2.0	--	--	--	81.3	<5.00	AEA
SB-02	08/27/24	NS - Insufficient water column										
L-14876 POD-02 MW-2	05/22/25	NS - Insufficient water column										
L-14876 POD-02 MW-2	02/23/26	NS - Insufficient water column										
L-14876 POD-02 MW-2	05/26/26	NS -Well dewatered before sampling could occur										
SB-04	05/26/22	<1.00	<1.00	<1.00	<1.00	--	<0.100	<1.00	<2.00	29	--	AEA
SB-04	04/05/23	<1.00	<1.00	<1.00	<1.00	<2.0	--	--	--	86.2	<0.250	AEA
SB-04	08/27/24	NS - Not enough water										
SB-04		Plugged 10/08/2024										
SB-05	04/16/20	<2.00	<2.00	<2.00	<2.00	--	<2.50	<2.50	<2.50	12,000	--	HRL
SB-05	04/05/23	2.61	<1.00	<1.00	<1.00	3.21	--	--	--	11,300	6.44	AEA
SB-05	08/27/24	3.81	<1.00	<1.00	<1.00	6.08	--	--	--	30,100	--	AEA
SB-05		Plugged 10/08 -1/11/2024										
L-15833 POD-1 MW-5R	05/15/25	1.57	<1.00	<1.00	<1.00	<2.00	--	--	--	10,600.0	--	AEA
L-15833 POD-1 MW-5R	02/23/26	<1.00	<1.00	<1.00	<1.00	<1.00	--	--	--	8,360.0	--	AEA
L-15833 POD-1 MW-5R	05/26/26	1.13	<1.00	<1.00	<1.00	<2.00	--	--	--	5,340	--	AEA
SB-07	04/16/20	20.2	<2.00	14.3	9.16	--	<2.50	<2.50	<2.50	3,470	--	HRL
SB-07	05/26/22	5.09	<1.00	8.44	<1.00	--	0.136	<1.00	<2.00	30.6	--	AEA
SB-07	04/05/23	9.28	<1.0	5.34	<1.0	<2.0	--	--	--	27.0	<0.500	AEA
SB-07	08/27/24	12.6	<1.00	7.47	<1.00	2.86	--	--	--	71.6	--	AEA
SB-07		Plugged 10/08/2024										
L-15833 POD-2 MW-7R	05/15/25	<1.00	<1.00	<1.0	<1.00	<2.00	--	--	--	320	--	AEA
L-15833 POD-2 MW-7R	02/23/26	<1.00	<1.00	<1.0	<1.00	<2.00	--	--	--	259	--	AEA
L-15833 POD-2 MW-7R	05/26/26	<1.00	<1.00	<1.00	<1.00	<2.00	--	--	--	358	--	AEA
SB-13	04/16/20	25	<2.0	<2.0	<2.0	--	<2.50	<2.50	<2.50	928	--	HRL
SB-13	05/26/22	<1.00	<1.00	<1.00	<1.00	--	<0.100	<1.00	<2.00	188	--	AEA
SB-13	04/05/23	<1.00	<1.00	<1.00	<1.00	<2.0	--	--	--	424	<2.50	AEA
SB-13	08/27/24	NS - Insufficient water column										
SB-13		Plugged 10/08/2024										

Table A3: Aqueous Analytical Results - Contaminants of Concern2nd Quarter 2026

West Pearl Queen Site, Unit B of Section 32, Township 19 South, Range 35 East, NMPM


NMOSE Well POD Well ID Number	Date	Benzene (µg/L)	Toluene (µg/L)	Ethyl Benzene (µg/L)	Total Xylenes (µg/L)	Methylene Chloride (µg/L)	GRO (mg/L)	DRO (mg/L)	ORO (mg/L)	Chloride (mg/L)	Nitrates (mg/L)	Sampler
NMWQCC Standard		5.0	1,000	700	620	5.0	100	100	100	250	10	--
SB-14	04/16/20	<2.00	<2.00	<2.00	<2.00	--	<2.50	<2.50	<2.50	6,840	--	HRL
SB-14	05/26/22	<1.00	<1.00	<1.00	<1.00	--	<0.100	<1.00	<2.00	711	--	AEA
SB-14	04/05/23	<1.00	<1.00	<1.00	<1.00	<2.0	--	--	--	388	<5.00	AEA
SB-14	08/27/24	<1.00	<1.00	<1.00	<1.00	2.63	--	--	--	1,940	--	AEA
L-14876 POD-14 MW-14	05/15/25	<1.00	<1.00	<1.00	<1.00	9.01	--	--	--	7,850	--	AEA
L-14876 POD-14 MW-14	02/23/26	<1.00	<1.00	<1.00	<1.00	<2.00	--	--	--	751	--	AEA
L-14876 POD-14 MW-14	05/26/26	<1.00	<1.00	<1.00	<1.00	<2.00	--	--	--	746	--	AEA
SB-17	04/16/20	2.9	<2.0	5.65	13.5	--	<2.50	<2.50	<2.50	17,300	--	HRL
SB-20	05/26/22	1.56	13.0	<1.00	<1.00	--	<0.100	<1.00	<2.00	185,000	--	AEA
SB-20	04/05/23	<5.00	<5.00	<5.00	<5.00	187	--	--	--	61,700	<250	AEA
SB-20	08/27/24	1.72	2.21	<1.00	<1.00	236	--	--	--	61,600	--	AEA
SB-20	Plugged 10/08 -1/11/2024											
SB-21	05/26/22	<1.00	5.77	<1.00	<1.00	--	<0.100	<1.00	<2.00	96,800	--	AEA
SB-21	04/05/23	<5.00	<5.00	<5.00	<5.00	56.6	--	--	--	94,400	<250	AEA
SB-21	08/27/24	<1.00	<1.00	<1.00	<1.00	44	--	--	--	38,200	--	AEA
SB-21	Plugged 10/08 -1/11/2024											
SB-22	05/26/22	<1.00	17.5	<1.00	<1.00	--	<0.100	<1.00	<2.00	170,000	--	AEA
SB-22	04/05/23	<5.00	<5.00	<5.00	<5.00	254	--	--	--	124,000	<250	AEA
SB-22	08/27/24	<1.00	<1.00	<1.00	<1.00	286	--	--	--	148,000	--	AEA
SB-22	Plugged 10/08 -1/11/2024											
SB-23	05/26/22	<1.00	3.09	<1.00	<1.00	--	<0.100	<1.00	<2.00	76,100	--	AEA
SB-23	04/05/23	<5.00	<5.00	<5.00	<5.00	54	--	--	--	25,700	<250	AEA
SB-23	08/27/24	<1.00	<1.00	<1.00	<1.00	45.8	--	--	--	21,300	--	AEA
SB-23	Plugged 10/08 -1/11/2024											
L-15833 POD-3 MW-24	05/15/25	<1.00	<1.00	<1.00	<1.00	26.3	--	--	--	19,100	--	AEA
L-15833 POD-3 MW-24	02/23/26	1.5	<1.00	<1.00	<1.00	22.3	--	--	--	13,100	--	AEA
L-15833 POD-3 MW-24	05/26/26	3.11	<1.00	<1.00	<1.00	39.3	--	--	--	24,600	--	AEA

Notes

1. Water Quality Standards for BTEX listed in NMAC 20.6.2.3103, adopted by NMWQCC on August 14, 2018; amended regulations effective date December 21, 2018; groundwater standards effective date July 1, 2020.
2. TPH (GRO, DRO, ORO) and Nitrates, not analyzed since 2023.
3. NS = Well Not Sampled.
4. MW-14 dewatered during 2/23/26 and 5/26/26 well puge; a grab sample was collected for laboratory analysis.

Appendix B: Field Datasheets

WELL MONITORING DATA SHEET

	Well I.D.	MW-24	Job Number:	aecwpea_env_25
	Client:	Armstrong Energy Corp	Date:	5/26/26
	Project:	West Pearl Queen	Sampler:	KA/NC
	Weather:		Time In/Out:	

WELL DATA

Well Depth:	28.69	Well Diameter:		Water Height	3.77
Depth to Water:	24.92	Screened Interval:	---	x Multiplier	.1713
Water Column Length:	3.77	Depth to Free Product:	---	x Casing Volumes	.65.3
Purge Volume:		Free Product Thickness:	---	= Purge Volume	1.97
Water Height Multipliers (gal)		1-inch = 0.041	2-inch = 0.1743	4-inch = 0.6613	1 gallon = 3.785 liters

PURGING DATA

Purge Method:		Pump Intake Depth:			Comments						
Sampling Method:		Tubing Type:									
Time	Volume Purged (gal)	Cumulative Volume Purged (gal)	DTW (btc)	Purge Rate (L/min)	pH	Temp (°C)	Cond (µS/cm)	DO (ppm)	ORP (mV)	Turbidity (NTUs)	Clarity/Color Other Remarks
					+/-0.1	+/-0.5° C	+/-5%	+/- 0.5 ppm	+/-20mV	+/-10%	← Stabilization Criteria
1230	--	--	--	--	7.57	19.6	32681	0.07	15.9	--	CI
1235	.65	.65	--	--	7.61	19.6	34616	0.08	21.4	--	CI
1237		1.30	---	---	7.41	19.7	36198	0.08	22.9	--	CI
1240		1.97	--	--	7.18	19.5	35688	0.08	26.5	--	VC
1242					7.36	19.8	41904	0.09	26.0		VC
1245					7.39	19.8	44071	0.09	25.8		VC

Clarity: VC = very cloudy, CI = Cloudy, SC = slightly cloudy, AC = almost clear, C = clear

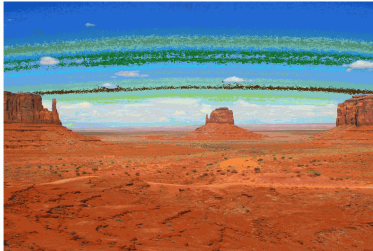
SAMPLING DATA

Sample ID:	MW-24	Sampling Flow Rate	---	Analytical Laboratory:	Hall-Envirotech	
Sample Time:	1245	Final Depth to Water:	---	Did Well Dewater?		
# Containers/Type	Preservative	Analysis/Method	Field Filtered	Filter Size	MS/MSD	Duplicate ID
			yes no			
			yes no			
			yes no			
			yes no			
			yes no			

COMMENTS

Appendix C: Analysis Laboratory Datasheets

Report to:
Jessica Atkins



envirotech

Practical Solutions for a Better Tomorrow

Analytical Report

Atkins Engineering Associates Inc.

Project Name: West Pearl Queen

Work Order: E605240

Job Number: 20071-0001

Received: 5/27/2026

Revision: 1

Report Reviewed By:

Walter Hinchman
Laboratory Director
6/1/26

5796 U.S. Hwy 64
Farmington, NM 87401

Phone: (505) 632-1881
Envirotech-inc.com



Envirotech Inc. certifies the test results meet all requirements of TNI unless noted otherwise.
Statement of Data Authenticity: Envirotech Inc, attests the data reported has not been altered in any way.
Partial or incomplete reproduction of this report is prohibited, unless approved by Envirotech Inc.
Envirotech Inc, holds the Utah TNI certification NM00979 for data reported.
Envirotech Inc, holds the Texas TNI certification T104704557 for data reported.



Date Reported: 6/1/26

Jessica Atkins
2904 W. 2nd
Roswell, NM 88201

Project Name: West Pearl Queen
Workorder: E605240
Date Received: 5/27/2026 8:00:00AM

Jessica Atkins,

Thank you for choosing Envirotech, Inc. as your analytical testing laboratory for the sample(s) received on, 5/27/2026 8:00:00AM, under the Project Name: West Pearl Queen.

The analytical test results summarized in this report with the Project Name: West Pearl Queen apply to the individual samples collected, identified and submitted bearing the project name on the enclosed chain-of-custody. Subcontracted sample analyses not conducted by Envirotech, Inc., are attached in full as issued by the subcontract laboratory.

Please review the Chain-of-Custody (COC) and Sample Receipt Checklist (SRC) for any issues regarding sample receipt temperature, containers, preservation etc. To best understand your test results, review the entire report summarizing your sample data and the associated quality control batch data.

All reported data in this analytical report were analyzed according to the referenced method(s) and are in compliance with the latest NELAC/TNI standards, unless otherwise noted. Samples or analytical quality control parameters not meeting specific QC criteria are qualified with a data flag. Data flag definitions are located in the Notes and Definitions section of this analytical report.

If you have any questions concerning this report, please feel free to contact Envirotech, Inc.

Respectfully,

Walter Hinchman
Laboratory Director
Office: 505-632-1881
Cell: 775-287-1762
whinchman@envirotech-inc.com

Raina Schwanz
Laboratory Administrator
Office: 505-632-1881
rainaschwanz@envirotech-inc.com

Field Offices:

Southern New Mexico Area

Lynn Jarboe
Laboratory Technical Representative
Office: 505-421-LABS(5227)
Cell: 505-320-4759
ljjarboe@envirotech-inc.com

Michelle Gonzales
Client Representative
Office: 505-421-LABS(5227)
Cell: 505-947-8222
mgonzales@envirotech-inc.com

Envirotech Web Address: www.envirotech-inc.com

Table of Contents

Title Page	1
Cover Page	2
Table of Contents	3
Sample Summary	4
Sample Data	5
MW-5R	5
MW-7R	8
MW-14	11
MW-24	14
Trip Blank	17
Dupe	19
QC Summary Data	22
QC - Volatile Organic Compounds by EPA 8260B	22
QC - Anions by EPA 300.0/9056A	25
Definitions and Notes	26
Chain of Custody etc.	27

Sample Summary

Atkins Engineering Associates Inc. 2904 W. 2nd Roswell NM, 88201	Project Name: West Pearl Queen Project Number: 20071-0001 Project Manager: Jessica Atkins	Reported: 06/01/26 16:50
--	---	-----------------------------

Client Sample ID	Lab Sample ID	Matrix	Sampled	Received	Container
MW-5R	E605240-01A	Aqueous	05/26/26	05/27/26	VOA Vial, 40mL; HCl
	E605240-01B	Aqueous	05/26/26	05/27/26	VOA Vial, 40mL; HCl
	E605240-01C	Aqueous	05/26/26	05/27/26	VOA Vial, 40mL; HCl
	E605240-01D	Aqueous	05/26/26	05/27/26	Poly 250mL
MW-7R	E605240-02A	Aqueous	05/26/26	05/27/26	VOA Vial, 40mL; HCl
	E605240-02B	Aqueous	05/26/26	05/27/26	VOA Vial, 40mL; HCl
	E605240-02C	Aqueous	05/26/26	05/27/26	VOA Vial, 40mL; HCl
	E605240-02D	Aqueous	05/26/26	05/27/26	Poly 250mL
MW-14	E605240-03A	Aqueous	05/26/26	05/27/26	VOA Vial, 40mL; HCl
	E605240-03B	Aqueous	05/26/26	05/27/26	VOA Vial, 40mL; HCl
	E605240-03C	Aqueous	05/26/26	05/27/26	VOA Vial, 40mL; HCl
	E605240-03D	Aqueous	05/26/26	05/27/26	Poly 250mL
MW-24	E605240-04A	Aqueous	05/26/26	05/27/26	VOA Vial, 40mL; HCl
	E605240-04B	Aqueous	05/26/26	05/27/26	VOA Vial, 40mL; HCl
	E605240-04C	Aqueous	05/26/26	05/27/26	VOA Vial, 40mL; HCl
	E605240-04D	Aqueous	05/26/26	05/27/26	Poly 250mL
Trip Blank	E605240-05A	Aqueous	05/26/26	05/27/26	VOA Vial, 40mL; HCl
Dupe	E605240-06A	Aqueous	05/26/26	05/27/26	VOA Vial, 40mL; HCl
	E605240-06B	Aqueous	05/26/26	05/27/26	VOA Vial, 40mL; HCl
	E605240-06C	Aqueous	05/26/26	05/27/26	VOA Vial, 40mL; HCl
	E605240-06D	Aqueous	05/26/26	05/27/26	Poly 250mL



Sample Data

Atkins Engineering Associates Inc. 2904 W. 2nd Roswell NM, 88201	Project Name: West Pearl Queen Project Number: 20071-0001 Project Manager: Jessica Atkins	Reported: 6/1/2026 4:50:54PM
--	---	--

MW-5R

E605240-01

Analyte	Result	Reporting Limit	Dilution	Prepared	Analyzed	Notes
---------	--------	-----------------	----------	----------	----------	-------

Volatile Organic Compounds by EPA 8260B

Analyte	ug/L	ug/L	Dilution	Prepared	Analyzed	Notes
			Analyst: BA			Batch: 2622073
Acetone	ND	20.0	1	05/28/26	05/28/26	
Benzene	1.13	1.00	1	05/28/26	05/28/26	
Bromobenzene	ND	1.00	1	05/28/26	05/28/26	
Bromochloromethane	ND	1.00	1	05/28/26	05/28/26	
Bromodichloromethane	ND	1.00	1	05/28/26	05/28/26	
Bromoform	ND	1.00	1	05/28/26	05/28/26	
Bromomethane	ND	2.00	1	05/28/26	05/28/26	
n-Butyl Benzene	ND	1.00	1	05/28/26	05/28/26	
sec-Butylbenzene	ND	1.00	1	05/28/26	05/28/26	
tert-Butylbenzene	ND	1.00	1	05/28/26	05/28/26	
Carbon Tetrachloride	ND	1.00	1	05/28/26	05/28/26	
Chlorobenzene	ND	1.00	1	05/28/26	05/28/26	
Chloroethane	ND	2.00	1	05/28/26	05/28/26	
Chloroform	ND	5.00	1	05/28/26	05/28/26	
Chloromethane	ND	2.00	1	05/28/26	05/28/26	
2-Chlorotoluene	ND	1.00	1	05/28/26	05/28/26	
4-Chlorotoluene	ND	1.00	1	05/28/26	05/28/26	
Dibromochloromethane	ND	1.00	1	05/28/26	05/28/26	
1,2-Dibromo-3-chloropropane (DBCP)	ND	5.00	1	05/28/26	05/28/26	
1,2-Dibromoethane (EDB)	ND	2.00	1	05/28/26	05/28/26	
Dibromomethane	ND	1.00	1	05/28/26	05/28/26	
1,2-Dichlorobenzene	ND	1.00	1	05/28/26	05/28/26	
1,3-Dichlorobenzene	ND	1.00	1	05/28/26	05/28/26	
1,4-Dichlorobenzene	ND	1.00	1	05/28/26	05/28/26	
1,1-Dichloroethane	ND	1.00	1	05/28/26	05/28/26	
1,2-Dichloroethane	ND	1.00	1	05/28/26	05/28/26	
1,1-Dichloroethene	ND	1.00	1	05/28/26	05/28/26	
cis-1,2-Dichloroethene	ND	1.00	1	05/28/26	05/28/26	
trans-1,2-Dichloroethene	ND	1.00	1	05/28/26	05/28/26	
1,2-Dichloropropane	ND	1.00	1	05/28/26	05/28/26	
1,3-Dichloropropane	ND	1.00	1	05/28/26	05/28/26	
2,2-Dichloropropane	ND	1.00	1	05/28/26	05/28/26	
1,1-Dichloropropene	ND	1.00	1	05/28/26	05/28/26	
cis-1,3-Dichloropropene	ND	1.00	1	05/28/26	05/28/26	
trans-1,3-Dichloropropene	ND	1.00	1	05/28/26	05/28/26	
Diisopropyl Ether (DIPE)	ND	1.00	1	05/28/26	05/28/26	
Ethylbenzene	ND	1.00	1	05/28/26	05/28/26	
Ethyl tert-Butyl Ether (ETBE)	ND	1.00	1	05/28/26	05/28/26	
Hexachlorobutadiene	ND	5.00	1	05/28/26	05/28/26	
2-Hexanone	ND	20.0	1	05/28/26	05/28/26	
Isopropylbenzene	ND	1.00	1	05/28/26	05/28/26	
4-Isopropyltoluene	ND	1.00	1	05/28/26	05/28/26	
2-Butanone (MEK)	ND	20.0	1	05/28/26	05/28/26	
Methylene Chloride	ND	2.00	1	05/28/26	05/28/26	
1-Methylnaphthalene	ND	10.0	1	05/28/26	05/28/26	



Sample Data

Atkins Engineering Associates Inc. 2904 W. 2nd Roswell NM, 88201	Project Name: West Pearl Queen Project Number: 20071-0001 Project Manager: Jessica Atkins	Reported: 6/1/2026 4:50:54PM
--	---	--

MW-5R

E605240-01

Analyte	Result	Reporting Limit	Dilution	Prepared	Analyzed	Notes
Volatile Organic Compounds by EPA 8260B	ug/L	ug/L	Analyst: BA		Batch: 2622073	
2-Methylnaphthalene	ND	10.0	1	05/28/26	05/28/26	
4-Methyl-2-pentanone (MIBK)	ND	20.0	1	05/28/26	05/28/26	
Methyl tert-Butyl Ether (MTBE)	ND	1.00	1	05/28/26	05/28/26	
Naphthalene	ND	5.00	1	05/28/26	05/28/26	
n-Propyl Benzene	ND	1.00	1	05/28/26	05/28/26	
Styrene	ND	1.00	1	05/28/26	05/28/26	
tert-Amyl Methyl ether (TAME)	ND	1.00	1	05/28/26	05/28/26	
1,1,1,2-Tetrachloroethane	ND	1.00	1	05/28/26	05/28/26	
1,1,2,2-Tetrachloroethane	ND	1.00	1	05/28/26	05/28/26	
Tetrachloroethene	ND	1.00	1	05/28/26	05/28/26	
1,2,3-Trichlorobenzene	ND	5.00	1	05/28/26	05/28/26	
1,2,4-Trichlorobenzene	ND	5.00	1	05/28/26	05/28/26	
1,1,1-Trichloroethane	ND	1.00	1	05/28/26	05/28/26	
1,1,2-Trichloroethane	ND	1.00	1	05/28/26	05/28/26	
Trichloroethene	ND	1.00	1	05/28/26	05/28/26	
Trichlorofluoromethane (Freon-11)	ND	2.00	1	05/28/26	05/28/26	
1,2,3-Trichloropropane	ND	2.00	1	05/28/26	05/28/26	
1,2,4-Trimethylbenzene	ND	5.00	1	05/28/26	05/28/26	
1,3,5-Trimethylbenzene	ND	1.00	1	05/28/26	05/28/26	
Toluene	ND	1.00	1	05/28/26	05/28/26	
Vinyl chloride	ND	2.00	1	05/28/26	05/28/26	
o-Xylene	ND	1.00	1	05/28/26	05/28/26	
p,m-Xylene	ND	2.00	1	05/28/26	05/28/26	
Total Xylenes	ND	1.00	1	05/28/26	05/28/26	
<i>Surrogate: Bromofluorobenzene</i>		105 %	70-130	05/28/26	05/28/26	
<i>Surrogate: 1,2-Dichloroethane-d4</i>		96.8 %	70-130	05/28/26	05/28/26	
<i>Surrogate: Toluene-d8</i>		101 %	70-130	05/28/26	05/28/26	



Sample Data

Atkins Engineering Associates Inc. 2904 W. 2nd Roswell NM, 88201	Project Name: West Pearl Queen Project Number: 20071-0001 Project Manager: Jessica Atkins	Reported: 6/1/2026 4:50:54PM
--	---	--

MW-5R

E605240-01

Analyte	Result	Reporting Limit	Dilution	Prepared	Analyzed	Notes
Anions by EPA 300.0/9056A	mg/L	mg/L	Analyst: DT			Batch: 2622105
Chloride	5340	200	100	05/28/26	05/28/26	



Sample Data

Atkins Engineering Associates Inc. 2904 W. 2nd Roswell NM, 88201	Project Name: West Pearl Queen Project Number: 20071-0001 Project Manager: Jessica Atkins	Reported: 6/1/2026 4:50:54PM
--	---	---------------------------------

MW-7R

E605240-02

Analyte	Result	Reporting Limit	Dilution	Prepared	Analyzed	Notes
Volatile Organic Compounds by EPA 8260B	ug/L	ug/L		Analyst: BA		Batch: 2622073
Acetone	ND	20.0	1	05/28/26	05/28/26	
Benzene	ND	1.00	1	05/28/26	05/28/26	
Bromobenzene	ND	1.00	1	05/28/26	05/28/26	
Bromochloromethane	ND	1.00	1	05/28/26	05/28/26	
Bromodichloromethane	ND	1.00	1	05/28/26	05/28/26	
Bromoform	ND	1.00	1	05/28/26	05/28/26	
Bromomethane	ND	2.00	1	05/28/26	05/28/26	
n-Butyl Benzene	ND	1.00	1	05/28/26	05/28/26	
sec-Butylbenzene	ND	1.00	1	05/28/26	05/28/26	
tert-Butylbenzene	ND	1.00	1	05/28/26	05/28/26	
Carbon Tetrachloride	ND	1.00	1	05/28/26	05/28/26	
Chlorobenzene	ND	1.00	1	05/28/26	05/28/26	
Chloroethane	ND	2.00	1	05/28/26	05/28/26	
Chloroform	ND	5.00	1	05/28/26	05/28/26	
Chloromethane	ND	2.00	1	05/28/26	05/28/26	
2-Chlorotoluene	ND	1.00	1	05/28/26	05/28/26	
4-Chlorotoluene	ND	1.00	1	05/28/26	05/28/26	
Dibromochloromethane	ND	1.00	1	05/28/26	05/28/26	
1,2-Dibromo-3-chloropropane (DBCP)	ND	5.00	1	05/28/26	05/28/26	
1,2-Dibromoethane (EDB)	ND	2.00	1	05/28/26	05/28/26	
Dibromomethane	ND	1.00	1	05/28/26	05/28/26	
1,2-Dichlorobenzene	ND	1.00	1	05/28/26	05/28/26	
1,3-Dichlorobenzene	ND	1.00	1	05/28/26	05/28/26	
1,4-Dichlorobenzene	ND	1.00	1	05/28/26	05/28/26	
1,1-Dichloroethane	ND	1.00	1	05/28/26	05/28/26	
1,2-Dichloroethane	ND	1.00	1	05/28/26	05/28/26	
1,1-Dichloroethene	ND	1.00	1	05/28/26	05/28/26	
cis-1,2-Dichloroethene	ND	1.00	1	05/28/26	05/28/26	
trans-1,2-Dichloroethene	ND	1.00	1	05/28/26	05/28/26	
1,2-Dichloropropane	ND	1.00	1	05/28/26	05/28/26	
1,3-Dichloropropane	ND	1.00	1	05/28/26	05/28/26	
2,2-Dichloropropane	ND	1.00	1	05/28/26	05/28/26	
1,1-Dichloropropene	ND	1.00	1	05/28/26	05/28/26	
cis-1,3-Dichloropropene	ND	1.00	1	05/28/26	05/28/26	
trans-1,3-Dichloropropene	ND	1.00	1	05/28/26	05/28/26	
Diisopropyl Ether (DIPE)	ND	1.00	1	05/28/26	05/28/26	
Ethylbenzene	ND	1.00	1	05/28/26	05/28/26	
Ethyl tert-Butyl Ether (ETBE)	ND	1.00	1	05/28/26	05/28/26	
Hexachlorobutadiene	ND	5.00	1	05/28/26	05/28/26	
2-Hexanone	ND	20.0	1	05/28/26	05/28/26	
Isopropylbenzene	ND	1.00	1	05/28/26	05/28/26	
4-Isopropyltoluene	ND	1.00	1	05/28/26	05/28/26	
2-Butanone (MEK)	ND	20.0	1	05/28/26	05/28/26	
Methylene Chloride	ND	2.00	1	05/28/26	05/28/26	
1-Methylnaphthalene	ND	10.0	1	05/28/26	05/28/26	
2-Methylnaphthalene	ND	10.0	1	05/28/26	05/28/26	
4-Methyl-2-pentanone (MIBK)	ND	20.0	1	05/28/26	05/28/26	



Sample Data

Atkins Engineering Associates Inc. 2904 W. 2nd Roswell NM, 88201	Project Name: West Pearl Queen Project Number: 20071-0001 Project Manager: Jessica Atkins	Reported: 6/1/2026 4:50:54PM
--	---	---------------------------------

MW-7R
E605240-02

Analyte	Result	Reporting Limit	Dilution	Prepared	Analyzed	Notes
Volatile Organic Compounds by EPA 8260B	ug/L	ug/L		Analyst: BA		Batch: 2622073
Methyl tert-Butyl Ether (MTBE)	ND	1.00	1	05/28/26	05/28/26	
Naphthalene	ND	5.00	1	05/28/26	05/28/26	
n-Propyl Benzene	ND	1.00	1	05/28/26	05/28/26	
Styrene	ND	1.00	1	05/28/26	05/28/26	
tert-Amyl Methyl ether (TAME)	ND	1.00	1	05/28/26	05/28/26	
1,1,1,2-Tetrachloroethane	ND	1.00	1	05/28/26	05/28/26	
1,1,2,2-Tetrachloroethane	ND	1.00	1	05/28/26	05/28/26	
Tetrachloroethene	ND	1.00	1	05/28/26	05/28/26	
1,2,3-Trichlorobenzene	ND	5.00	1	05/28/26	05/28/26	
1,2,4-Trichlorobenzene	ND	5.00	1	05/28/26	05/28/26	
1,1,1-Trichloroethane	ND	1.00	1	05/28/26	05/28/26	
1,1,2-Trichloroethane	ND	1.00	1	05/28/26	05/28/26	
Trichloroethene	ND	1.00	1	05/28/26	05/28/26	
Trichlorofluoromethane (Freon-11)	ND	2.00	1	05/28/26	05/28/26	
1,2,3-Trichloropropane	ND	2.00	1	05/28/26	05/28/26	
1,2,4-Trimethylbenzene	ND	5.00	1	05/28/26	05/28/26	
1,3,5-Trimethylbenzene	ND	1.00	1	05/28/26	05/28/26	
Toluene	ND	1.00	1	05/28/26	05/28/26	
Vinyl chloride	ND	2.00	1	05/28/26	05/28/26	
o-Xylene	ND	1.00	1	05/28/26	05/28/26	
p,m-Xylene	ND	2.00	1	05/28/26	05/28/26	
Total Xylenes	ND	1.00	1	05/28/26	05/28/26	
<hr/>						
Surrogate: Bromofluorobenzene		102 %	70-130	05/28/26	05/28/26	
Surrogate: 1,2-Dichloroethane-d4		102 %	70-130	05/28/26	05/28/26	
Surrogate: Toluene-d8		101 %	70-130	05/28/26	05/28/26	



Sample Data

Atkins Engineering Associates Inc. 2904 W. 2nd Roswell NM, 88201	Project Name: West Pearl Queen Project Number: 20071-0001 Project Manager: Jessica Atkins	Reported: 6/1/2026 4:50:54PM
--	---	--

MW-7R

E605240-02

Analyte	Result	Reporting Limit	Dilution	Prepared	Analyzed	Notes
Anions by EPA 300.0/9056A	mg/L	mg/L	Analyst: DT			Batch: 2622105
Chloride	338	10.0	5	05/28/26	05/28/26	



Sample Data

Atkins Engineering Associates Inc. 2904 W. 2nd Roswell NM, 88201	Project Name: West Pearl Queen Project Number: 20071-0001 Project Manager: Jessica Atkins	Reported: 6/1/2026 4:50:54PM
--	---	--

MW-14

E605240-03

Analyte	Result	Reporting Limit	Dilution	Prepared	Analyzed	Notes
Volatile Organic Compounds by EPA 8260B	ug/L	ug/L		Analyst: BA		Batch: 2622073
Acetone	ND	20.0	1	05/28/26	05/28/26	
Benzene	ND	1.00	1	05/28/26	05/28/26	
Bromobenzene	ND	1.00	1	05/28/26	05/28/26	
Bromochloromethane	ND	1.00	1	05/28/26	05/28/26	
Bromodichloromethane	ND	1.00	1	05/28/26	05/28/26	
Bromoform	ND	1.00	1	05/28/26	05/28/26	
Bromomethane	ND	2.00	1	05/28/26	05/28/26	
n-Butyl Benzene	ND	1.00	1	05/28/26	05/28/26	
sec-Butylbenzene	ND	1.00	1	05/28/26	05/28/26	
tert-Butylbenzene	ND	1.00	1	05/28/26	05/28/26	
Carbon Tetrachloride	ND	1.00	1	05/28/26	05/28/26	
Chlorobenzene	ND	1.00	1	05/28/26	05/28/26	
Chloroethane	ND	2.00	1	05/28/26	05/28/26	
Chloroform	ND	5.00	1	05/28/26	05/28/26	
Chloromethane	ND	2.00	1	05/28/26	05/28/26	
2-Chlorotoluene	ND	1.00	1	05/28/26	05/28/26	
4-Chlorotoluene	ND	1.00	1	05/28/26	05/28/26	
Dibromochloromethane	ND	1.00	1	05/28/26	05/28/26	
1,2-Dibromo-3-chloropropane (DBCP)	ND	5.00	1	05/28/26	05/28/26	
1,2-Dibromoethane (EDB)	ND	2.00	1	05/28/26	05/28/26	
Dibromomethane	ND	1.00	1	05/28/26	05/28/26	
1,2-Dichlorobenzene	ND	1.00	1	05/28/26	05/28/26	
1,3-Dichlorobenzene	ND	1.00	1	05/28/26	05/28/26	
1,4-Dichlorobenzene	ND	1.00	1	05/28/26	05/28/26	
1,1-Dichloroethane	ND	1.00	1	05/28/26	05/28/26	
1,2-Dichloroethane	ND	1.00	1	05/28/26	05/28/26	
1,1-Dichloroethene	ND	1.00	1	05/28/26	05/28/26	
cis-1,2-Dichloroethene	ND	1.00	1	05/28/26	05/28/26	
trans-1,2-Dichloroethene	ND	1.00	1	05/28/26	05/28/26	
1,2-Dichloropropane	ND	1.00	1	05/28/26	05/28/26	
1,3-Dichloropropane	ND	1.00	1	05/28/26	05/28/26	
2,2-Dichloropropane	ND	1.00	1	05/28/26	05/28/26	
1,1-Dichloropropene	ND	1.00	1	05/28/26	05/28/26	
cis-1,3-Dichloropropene	ND	1.00	1	05/28/26	05/28/26	
trans-1,3-Dichloropropene	ND	1.00	1	05/28/26	05/28/26	
Diisopropyl Ether (DIPE)	ND	1.00	1	05/28/26	05/28/26	
Ethylbenzene	ND	1.00	1	05/28/26	05/28/26	
Ethyl tert-Butyl Ether (ETBE)	ND	1.00	1	05/28/26	05/28/26	
Hexachlorobutadiene	ND	5.00	1	05/28/26	05/28/26	
2-Hexanone	ND	20.0	1	05/28/26	05/28/26	
Isopropylbenzene	ND	1.00	1	05/28/26	05/28/26	
4-Isopropyltoluene	ND	1.00	1	05/28/26	05/28/26	
2-Butanone (MEK)	ND	20.0	1	05/28/26	05/28/26	
Methylene Chloride	ND	2.00	1	05/28/26	05/28/26	
1-Methylnaphthalene	ND	10.0	1	05/28/26	05/28/26	
2-Methylnaphthalene	ND	10.0	1	05/28/26	05/28/26	
4-Methyl-2-pentanone (MIBK)	ND	20.0	1	05/28/26	05/28/26	



Sample Data

Atkins Engineering Associates Inc. 2904 W. 2nd Roswell NM, 88201	Project Name: West Pearl Queen Project Number: 20071-0001 Project Manager: Jessica Atkins	Reported: 6/1/2026 4:50:54PM
--	---	--

MW-14

E605240-03

Analyte	Result	Reporting Limit	Dilution	Prepared	Analyzed	Notes
Volatile Organic Compounds by EPA 8260B	ug/L	ug/L		Analyst: BA		Batch: 2622073
Methyl tert-Butyl Ether (MTBE)	ND	1.00	1	05/28/26	05/28/26	
Naphthalene	ND	5.00	1	05/28/26	05/28/26	
n-Propyl Benzene	ND	1.00	1	05/28/26	05/28/26	
Styrene	ND	1.00	1	05/28/26	05/28/26	
tert-Amyl Methyl ether (TAME)	ND	1.00	1	05/28/26	05/28/26	
1,1,1,2-Tetrachloroethane	ND	1.00	1	05/28/26	05/28/26	
1,1,2,2-Tetrachloroethane	ND	1.00	1	05/28/26	05/28/26	
Tetrachloroethene	ND	1.00	1	05/28/26	05/28/26	
1,2,3-Trichlorobenzene	ND	5.00	1	05/28/26	05/28/26	
1,2,4-Trichlorobenzene	ND	5.00	1	05/28/26	05/28/26	
1,1,1-Trichloroethane	ND	1.00	1	05/28/26	05/28/26	
1,1,2-Trichloroethane	ND	1.00	1	05/28/26	05/28/26	
Trichloroethene	ND	1.00	1	05/28/26	05/28/26	
Trichlorofluoromethane (Freon-11)	ND	2.00	1	05/28/26	05/28/26	
1,2,3-Trichloropropane	ND	2.00	1	05/28/26	05/28/26	
1,2,4-Trimethylbenzene	ND	5.00	1	05/28/26	05/28/26	
1,3,5-Trimethylbenzene	ND	1.00	1	05/28/26	05/28/26	
Toluene	ND	1.00	1	05/28/26	05/28/26	
Vinyl chloride	ND	2.00	1	05/28/26	05/28/26	
o-Xylene	ND	1.00	1	05/28/26	05/28/26	
p,m-Xylene	ND	2.00	1	05/28/26	05/28/26	
Total Xylenes	ND	1.00	1	05/28/26	05/28/26	
<i>Surrogate: Bromofluorobenzene</i>		102 %	70-130	05/28/26	05/28/26	
<i>Surrogate: 1,2-Dichloroethane-d4</i>		99.4 %	70-130	05/28/26	05/28/26	
<i>Surrogate: Toluene-d8</i>		99.5 %	70-130	05/28/26	05/28/26	



Sample Data

Atkins Engineering Associates Inc. 2904 W. 2nd Roswell NM, 88201	Project Name: West Pearl Queen Project Number: 20071-0001 Project Manager: Jessica Atkins	Reported: 6/1/2026 4:50:54PM
--	---	--

MW-14

E605240-03

Analyte	Result	Reporting Limit	Dilution	Prepared	Analyzed	Notes
Anions by EPA 300.0/9056A	mg/L	mg/L	Analyst: DT			Batch: 2622105
Chloride	746	20.0	10	05/28/26	05/28/26	



Sample Data

Atkins Engineering Associates Inc. 2904 W. 2nd Roswell NM, 88201	Project Name: West Pearl Queen Project Number: 20071-0001 Project Manager: Jessica Atkins	Reported: 6/1/2026 4:50:54PM
--	---	---------------------------------

MW-24

E605240-04

Analyte	Result	Reporting Limit	Dilution	Prepared	Analyzed	Notes
Volatile Organic Compounds by EPA 8260B	ug/L	ug/L	Analyst: BA		Batch: 2622073	
Acetone	ND	20.0	1	05/28/26	05/28/26	
Benzene	3.11	1.00	1	05/28/26	05/28/26	
Bromobenzene	ND	1.00	1	05/28/26	05/28/26	
Bromochloromethane	ND	1.00	1	05/28/26	05/28/26	
Bromodichloromethane	ND	1.00	1	05/28/26	05/28/26	
Bromoform	ND	1.00	1	05/28/26	05/28/26	
Bromomethane	ND	2.00	1	05/28/26	05/28/26	
n-Butyl Benzene	ND	1.00	1	05/28/26	05/28/26	
sec-Butylbenzene	ND	1.00	1	05/28/26	05/28/26	
tert-Butylbenzene	ND	1.00	1	05/28/26	05/28/26	
Carbon Tetrachloride	ND	1.00	1	05/28/26	05/28/26	
Chlorobenzene	ND	1.00	1	05/28/26	05/28/26	
Chloroethane	ND	2.00	1	05/28/26	05/28/26	
Chloroform	ND	5.00	1	05/28/26	05/28/26	
Chloromethane	ND	2.00	1	05/28/26	05/28/26	
2-Chlorotoluene	ND	1.00	1	05/28/26	05/28/26	
4-Chlorotoluene	ND	1.00	1	05/28/26	05/28/26	
Dibromochloromethane	ND	1.00	1	05/28/26	05/28/26	
1,2-Dibromo-3-chloropropane (DBCP)	ND	5.00	1	05/28/26	05/28/26	
1,2-Dibromoethane (EDB)	ND	2.00	1	05/28/26	05/28/26	
Dibromomethane	ND	1.00	1	05/28/26	05/28/26	
1,2-Dichlorobenzene	ND	1.00	1	05/28/26	05/28/26	
1,3-Dichlorobenzene	ND	1.00	1	05/28/26	05/28/26	
1,4-Dichlorobenzene	ND	1.00	1	05/28/26	05/28/26	
1,1-Dichloroethane	ND	1.00	1	05/28/26	05/28/26	
1,2-Dichloroethane	ND	1.00	1	05/28/26	05/28/26	
1,1-Dichloroethene	ND	1.00	1	05/28/26	05/28/26	
cis-1,2-Dichloroethene	ND	1.00	1	05/28/26	05/28/26	
trans-1,2-Dichloroethene	ND	1.00	1	05/28/26	05/28/26	
1,2-Dichloropropane	ND	1.00	1	05/28/26	05/28/26	
1,3-Dichloropropane	ND	1.00	1	05/28/26	05/28/26	
2,2-Dichloropropane	ND	1.00	1	05/28/26	05/28/26	
1,1-Dichloropropene	ND	1.00	1	05/28/26	05/28/26	
cis-1,3-Dichloropropene	ND	1.00	1	05/28/26	05/28/26	
trans-1,3-Dichloropropene	ND	1.00	1	05/28/26	05/28/26	
Diisopropyl Ether (DIPE)	ND	1.00	1	05/28/26	05/28/26	
Ethylbenzene	ND	1.00	1	05/28/26	05/28/26	
Ethyl tert-Butyl Ether (ETBE)	ND	1.00	1	05/28/26	05/28/26	
Hexachlorobutadiene	ND	5.00	1	05/28/26	05/28/26	
2-Hexanone	ND	20.0	1	05/28/26	05/28/26	
Isopropylbenzene	ND	1.00	1	05/28/26	05/28/26	
4-Isopropyltoluene	ND	1.00	1	05/28/26	05/28/26	
2-Butanone (MEK)	ND	20.0	1	05/28/26	05/28/26	
Methylene Chloride	39.3	2.00	1	05/28/26	05/28/26	
1-Methylnaphthalene	ND	10.0	1	05/28/26	05/28/26	
2-Methylnaphthalene	ND	10.0	1	05/28/26	05/28/26	
4-Methyl-2-pentanone (MIBK)	ND	20.0	1	05/28/26	05/28/26	



Sample Data

Atkins Engineering Associates Inc. 2904 W. 2nd Roswell NM, 88201	Project Name: West Pearl Queen Project Number: 20071-0001 Project Manager: Jessica Atkins	Reported: 6/1/2026 4:50:54PM
--	---	--

MW-24

E605240-04

Analyte	Result	Reporting Limit	Dilution	Prepared	Analyzed	Notes
Volatile Organic Compounds by EPA 8260B	ug/L	ug/L	Analyst: BA		Batch: 2622073	
Methyl tert-Butyl Ether (MTBE)	ND	1.00	1	05/28/26	05/28/26	
Naphthalene	ND	5.00	1	05/28/26	05/28/26	
n-Propyl Benzene	ND	1.00	1	05/28/26	05/28/26	
Styrene	ND	1.00	1	05/28/26	05/28/26	
tert-Amyl Methyl ether (TAME)	ND	1.00	1	05/28/26	05/28/26	
1,1,1,2-Tetrachloroethane	ND	1.00	1	05/28/26	05/28/26	
1,1,2,2-Tetrachloroethane	ND	1.00	1	05/28/26	05/28/26	
Tetrachloroethene	ND	1.00	1	05/28/26	05/28/26	
1,2,3-Trichlorobenzene	ND	5.00	1	05/28/26	05/28/26	
1,2,4-Trichlorobenzene	ND	5.00	1	05/28/26	05/28/26	
1,1,1-Trichloroethane	ND	1.00	1	05/28/26	05/28/26	
1,1,2-Trichloroethane	ND	1.00	1	05/28/26	05/28/26	
Trichloroethene	ND	1.00	1	05/28/26	05/28/26	
Trichlorofluoromethane (Freon-11)	ND	2.00	1	05/28/26	05/28/26	
1,2,3-Trichloropropane	ND	2.00	1	05/28/26	05/28/26	
1,2,4-Trimethylbenzene	ND	5.00	1	05/28/26	05/28/26	
1,3,5-Trimethylbenzene	ND	1.00	1	05/28/26	05/28/26	
Toluene	ND	1.00	1	05/28/26	05/28/26	
Vinyl chloride	ND	2.00	1	05/28/26	05/28/26	
o-Xylene	ND	1.00	1	05/28/26	05/28/26	
p,m-Xylene	ND	2.00	1	05/28/26	05/28/26	
Total Xylenes	ND	1.00	1	05/28/26	05/28/26	
<i>Surrogate: Bromofluorobenzene</i>		103 %	70-130	05/28/26	05/28/26	
<i>Surrogate: 1,2-Dichloroethane-d4</i>		101 %	70-130	05/28/26	05/28/26	
<i>Surrogate: Toluene-d8</i>		101 %	70-130	05/28/26	05/28/26	



Sample Data

Atkins Engineering Associates Inc. 2904 W. 2nd Roswell NM, 88201	Project Name: West Pearl Queen Project Number: 20071-0001 Project Manager: Jessica Atkins	Reported: 6/1/2026 4:50:54PM
--	---	--

MW-24

E605240-04

Analyte	Result	Reporting Limit	Dilution	Prepared	Analyzed	Notes
Anions by EPA 300.0/9056A	mg/L	mg/L	Analyst: DT			Batch: 2622105
Chloride	24600	1000	500	05/28/26	05/28/26	



Sample Data

Atkins Engineering Associates Inc. 2904 W. 2nd Roswell NM, 88201	Project Name: West Pearl Queen Project Number: 20071-0001 Project Manager: Jessica Atkins	Reported: 6/1/2026 4:50:54PM
--	---	---------------------------------

Trip Blank

E605240-05

Analyte	Result	Reporting Limit	Dilution	Prepared	Analyzed	Notes
Volatile Organic Compounds by EPA 8260B	ug/L	ug/L		Analyst: BA		Batch: 2622073
Acetone	ND	20.0	1	05/27/26	05/27/26	
Benzene	ND	1.00	1	05/27/26	05/27/26	
Bromobenzene	ND	1.00	1	05/27/26	05/27/26	
Bromochloromethane	ND	1.00	1	05/27/26	05/27/26	
Bromodichloromethane	ND	1.00	1	05/27/26	05/27/26	
Bromoform	ND	1.00	1	05/27/26	05/27/26	
Bromomethane	ND	2.00	1	05/27/26	05/27/26	
n-Butyl Benzene	ND	1.00	1	05/27/26	05/27/26	
sec-Butylbenzene	ND	1.00	1	05/27/26	05/27/26	
tert-Butylbenzene	ND	1.00	1	05/27/26	05/27/26	
Carbon Tetrachloride	ND	1.00	1	05/27/26	05/27/26	
Chlorobenzene	ND	1.00	1	05/27/26	05/27/26	
Chloroethane	ND	2.00	1	05/27/26	05/27/26	
Chloroform	ND	5.00	1	05/27/26	05/27/26	
Chloromethane	ND	2.00	1	05/27/26	05/27/26	
2-Chlorotoluene	ND	1.00	1	05/27/26	05/27/26	
4-Chlorotoluene	ND	1.00	1	05/27/26	05/27/26	
Dibromochloromethane	ND	1.00	1	05/27/26	05/27/26	
1,2-Dibromo-3-chloropropane (DBCP)	ND	5.00	1	05/27/26	05/27/26	
1,2-Dibromoethane (EDB)	ND	2.00	1	05/27/26	05/27/26	
Dibromomethane	ND	1.00	1	05/27/26	05/27/26	
1,2-Dichlorobenzene	ND	1.00	1	05/27/26	05/27/26	
1,3-Dichlorobenzene	ND	1.00	1	05/27/26	05/27/26	
1,4-Dichlorobenzene	ND	1.00	1	05/27/26	05/27/26	
1,1-Dichloroethane	ND	1.00	1	05/27/26	05/27/26	
1,2-Dichloroethane	ND	1.00	1	05/27/26	05/27/26	
1,1-Dichloroethene	ND	1.00	1	05/27/26	05/27/26	
cis-1,2-Dichloroethene	ND	1.00	1	05/27/26	05/27/26	
trans-1,2-Dichloroethene	ND	1.00	1	05/27/26	05/27/26	
1,2-Dichloropropane	ND	1.00	1	05/27/26	05/27/26	
1,3-Dichloropropane	ND	1.00	1	05/27/26	05/27/26	
2,2-Dichloropropane	ND	1.00	1	05/27/26	05/27/26	
1,1-Dichloropropene	ND	1.00	1	05/27/26	05/27/26	
cis-1,3-Dichloropropene	ND	1.00	1	05/27/26	05/27/26	
trans-1,3-Dichloropropene	ND	1.00	1	05/27/26	05/27/26	
Diisopropyl Ether (DIPE)	ND	1.00	1	05/27/26	05/27/26	
Ethylbenzene	ND	1.00	1	05/27/26	05/27/26	
Ethyl tert-Butyl Ether (ETBE)	ND	1.00	1	05/27/26	05/27/26	
Hexachlorobutadiene	ND	5.00	1	05/27/26	05/27/26	
2-Hexanone	ND	20.0	1	05/27/26	05/27/26	
Isopropylbenzene	ND	1.00	1	05/27/26	05/27/26	
4-Isopropyltoluene	ND	1.00	1	05/27/26	05/27/26	
2-Butanone (MEK)	ND	20.0	1	05/27/26	05/27/26	
Methylene Chloride	ND	2.00	1	05/27/26	05/27/26	
1-Methylnaphthalene	ND	10.0	1	05/27/26	05/27/26	
2-Methylnaphthalene	ND	10.0	1	05/27/26	05/27/26	
4-Methyl-2-pentanone (MIBK)	ND	20.0	1	05/27/26	05/27/26	



Sample Data

Atkins Engineering Associates Inc. 2904 W. 2nd Roswell NM, 88201	Project Name: West Pearl Queen Project Number: 20071-0001 Project Manager: Jessica Atkins	Reported: 6/1/2026 4:50:54PM
--	---	--

Trip Blank

E605240-05

Analyte	Result	Reporting Limit	Dilution	Prepared	Analyzed	Notes
Volatile Organic Compounds by EPA 8260B	ug/L	ug/L	Analyst: BA		Batch: 2622073	
Methyl tert-Butyl Ether (MTBE)	ND	1.00	1	05/27/26	05/27/26	
Naphthalene	ND	5.00	1	05/27/26	05/27/26	
n-Propyl Benzene	ND	1.00	1	05/27/26	05/27/26	
Styrene	ND	1.00	1	05/27/26	05/27/26	
tert-Amyl Methyl ether (TAME)	ND	1.00	1	05/27/26	05/27/26	
1,1,1,2-Tetrachloroethane	ND	1.00	1	05/27/26	05/27/26	
1,1,2,2-Tetrachloroethane	ND	1.00	1	05/27/26	05/27/26	
Tetrachloroethene	ND	1.00	1	05/27/26	05/27/26	
1,2,3-Trichlorobenzene	ND	5.00	1	05/27/26	05/27/26	
1,2,4-Trichlorobenzene	ND	5.00	1	05/27/26	05/27/26	
1,1,1-Trichloroethane	ND	1.00	1	05/27/26	05/27/26	
1,1,2-Trichloroethane	ND	1.00	1	05/27/26	05/27/26	
Trichloroethene	ND	1.00	1	05/27/26	05/27/26	
Trichlorofluoromethane (Freon-11)	ND	2.00	1	05/27/26	05/27/26	
1,2,3-Trichloropropane	ND	2.00	1	05/27/26	05/27/26	
1,2,4-Trimethylbenzene	ND	5.00	1	05/27/26	05/27/26	
1,3,5-Trimethylbenzene	ND	1.00	1	05/27/26	05/27/26	
Toluene	ND	1.00	1	05/27/26	05/27/26	
Vinyl chloride	ND	2.00	1	05/27/26	05/27/26	
o-Xylene	ND	1.00	1	05/27/26	05/27/26	
p,m-Xylene	ND	2.00	1	05/27/26	05/27/26	
Total Xylenes	ND	1.00	1	05/27/26	05/27/26	
<i>Surrogate: Bromofluorobenzene</i>		100 %	70-130	05/27/26	05/27/26	
<i>Surrogate: 1,2-Dichloroethane-d4</i>		97.5 %	70-130	05/27/26	05/27/26	
<i>Surrogate: Toluene-d8</i>		99.2 %	70-130	05/27/26	05/27/26	



Sample Data

Atkins Engineering Associates Inc. 2904 W. 2nd Roswell NM, 88201	Project Name: West Pearl Queen Project Number: 20071-0001 Project Manager: Jessica Atkins	Reported: 6/1/2026 4:50:54PM
--	---	---------------------------------

Dupe

E605240-06

Analyte	Result	Reporting Limit	Dilution	Prepared	Analyzed	Notes
Volatile Organic Compounds by EPA 8260B	ug/L	ug/L		Analyst: BA		Batch: 2622073
Acetone	ND	20.0	1	05/28/26	05/28/26	
Benzene	ND	1.00	1	05/28/26	05/28/26	
Bromobenzene	ND	1.00	1	05/28/26	05/28/26	
Bromochloromethane	ND	1.00	1	05/28/26	05/28/26	
Bromodichloromethane	ND	1.00	1	05/28/26	05/28/26	
Bromoform	ND	1.00	1	05/28/26	05/28/26	
Bromomethane	ND	2.00	1	05/28/26	05/28/26	
n-Butyl Benzene	ND	1.00	1	05/28/26	05/28/26	
sec-Butylbenzene	ND	1.00	1	05/28/26	05/28/26	
tert-Butylbenzene	ND	1.00	1	05/28/26	05/28/26	
Carbon Tetrachloride	ND	1.00	1	05/28/26	05/28/26	
Chlorobenzene	ND	1.00	1	05/28/26	05/28/26	
Chloroethane	ND	2.00	1	05/28/26	05/28/26	
Chloroform	ND	5.00	1	05/28/26	05/28/26	
Chloromethane	ND	2.00	1	05/28/26	05/28/26	
2-Chlorotoluene	ND	1.00	1	05/28/26	05/28/26	
4-Chlorotoluene	ND	1.00	1	05/28/26	05/28/26	
Dibromochloromethane	ND	1.00	1	05/28/26	05/28/26	
1,2-Dibromo-3-chloropropane (DBCP)	ND	5.00	1	05/28/26	05/28/26	
1,2-Dibromoethane (EDB)	ND	2.00	1	05/28/26	05/28/26	
Dibromomethane	ND	1.00	1	05/28/26	05/28/26	
1,2-Dichlorobenzene	ND	1.00	1	05/28/26	05/28/26	
1,3-Dichlorobenzene	ND	1.00	1	05/28/26	05/28/26	
1,4-Dichlorobenzene	ND	1.00	1	05/28/26	05/28/26	
1,1-Dichloroethane	ND	1.00	1	05/28/26	05/28/26	
1,2-Dichloroethane	ND	1.00	1	05/28/26	05/28/26	
1,1-Dichloroethene	ND	1.00	1	05/28/26	05/28/26	
cis-1,2-Dichloroethene	ND	1.00	1	05/28/26	05/28/26	
trans-1,2-Dichloroethene	ND	1.00	1	05/28/26	05/28/26	
1,2-Dichloropropane	ND	1.00	1	05/28/26	05/28/26	
1,3-Dichloropropane	ND	1.00	1	05/28/26	05/28/26	
2,2-Dichloropropane	ND	1.00	1	05/28/26	05/28/26	
1,1-Dichloropropene	ND	1.00	1	05/28/26	05/28/26	
cis-1,3-Dichloropropene	ND	1.00	1	05/28/26	05/28/26	
trans-1,3-Dichloropropene	ND	1.00	1	05/28/26	05/28/26	
Diisopropyl Ether (DIPE)	ND	1.00	1	05/28/26	05/28/26	
Ethylbenzene	ND	1.00	1	05/28/26	05/28/26	
Ethyl tert-Butyl Ether (ETBE)	ND	1.00	1	05/28/26	05/28/26	
Hexachlorobutadiene	ND	5.00	1	05/28/26	05/28/26	
2-Hexanone	ND	20.0	1	05/28/26	05/28/26	
Isopropylbenzene	ND	1.00	1	05/28/26	05/28/26	
4-Isopropyltoluene	ND	1.00	1	05/28/26	05/28/26	
2-Butanone (MEK)	ND	20.0	1	05/28/26	05/28/26	
Methylene Chloride	ND	2.00	1	05/28/26	05/28/26	
1-Methylnaphthalene	ND	10.0	1	05/28/26	05/28/26	
2-Methylnaphthalene	ND	10.0	1	05/28/26	05/28/26	
4-Methyl-2-pentanone (MIBK)	ND	20.0	1	05/28/26	05/28/26	



Sample Data

Atkins Engineering Associates Inc. 2904 W. 2nd Roswell NM, 88201	Project Name: West Pearl Queen Project Number: 20071-0001 Project Manager: Jessica Atkins	Reported: 6/1/2026 4:50:54PM
--	---	--

Dupe

E605240-06

Analyte	Result	Reporting Limit	Dilution	Prepared	Analyzed	Notes
Volatile Organic Compounds by EPA 8260B	ug/L	ug/L	Analyst: BA		Batch: 2622073	
Methyl tert-Butyl Ether (MTBE)	ND	1.00	1	05/28/26	05/28/26	
Naphthalene	ND	5.00	1	05/28/26	05/28/26	
n-Propyl Benzene	ND	1.00	1	05/28/26	05/28/26	
Styrene	ND	1.00	1	05/28/26	05/28/26	
tert-Amyl Methyl ether (TAME)	ND	1.00	1	05/28/26	05/28/26	
1,1,1,2-Tetrachloroethane	ND	1.00	1	05/28/26	05/28/26	
1,1,2,2-Tetrachloroethane	ND	1.00	1	05/28/26	05/28/26	
Tetrachloroethene	ND	1.00	1	05/28/26	05/28/26	
1,2,3-Trichlorobenzene	ND	5.00	1	05/28/26	05/28/26	
1,2,4-Trichlorobenzene	ND	5.00	1	05/28/26	05/28/26	
1,1,1-Trichloroethane	ND	1.00	1	05/28/26	05/28/26	
1,1,2-Trichloroethane	ND	1.00	1	05/28/26	05/28/26	
Trichloroethene	ND	1.00	1	05/28/26	05/28/26	
Trichlorofluoromethane (Freon-11)	ND	2.00	1	05/28/26	05/28/26	
1,2,3-Trichloropropane	ND	2.00	1	05/28/26	05/28/26	
1,2,4-Trimethylbenzene	ND	5.00	1	05/28/26	05/28/26	
1,3,5-Trimethylbenzene	ND	1.00	1	05/28/26	05/28/26	
Toluene	ND	1.00	1	05/28/26	05/28/26	
Vinyl chloride	ND	2.00	1	05/28/26	05/28/26	
o-Xylene	ND	1.00	1	05/28/26	05/28/26	
p,m-Xylene	ND	2.00	1	05/28/26	05/28/26	
Total Xylenes	ND	1.00	1	05/28/26	05/28/26	
<i>Surrogate: Bromofluorobenzene</i>		102 %	70-130	05/28/26	05/28/26	
<i>Surrogate: 1,2-Dichloroethane-d4</i>		100 %	70-130	05/28/26	05/28/26	
<i>Surrogate: Toluene-d8</i>		102 %	70-130	05/28/26	05/28/26	



Sample Data

Atkins Engineering Associates Inc. 2904 W. 2nd Roswell NM, 88201	Project Name: West Pearl Queen Project Number: 20071-0001 Project Manager: Jessica Atkins	Reported: 6/1/2026 4:50:54PM
--	---	--

Dupe

E605240-06

Analyte	Result	Reporting Limit	Dilution	Prepared	Analyzed	Notes
Anions by EPA 300.0/9056A	mg/L	mg/L	Analyst: DT			Batch: 2622105
Chloride	341	10.0	5	05/28/26	05/28/26	



QC Summary Data

Atkins Engineering Associates Inc. 2904 W. 2nd Roswell NM, 88201	Project Name: West Pearl Queen Project Number: 20071-0001 Project Manager: Jessica Atkins	Reported: 6/1/2026 4:50:54PM
--	---	--

Volatile Organic Compounds by EPA 8260B

Analyst: BA

Analyte	Result	Reporting Limit	Spike Level	Source Result	Rec %	Rec Limits %	RPD %	RPD Limit %	Notes
	ug/L	ug/L	ug/L	ug/L	%	%	%	%	

Blank (2622073-BLK1)

Prepared: 05/27/26 Analyzed: 05/27/26

Acetone	ND	20.0							
Benzene	ND	1.00							
Bromobenzene	ND	1.00							
Bromochloromethane	ND	1.00							
Bromodichloromethane	ND	1.00							
Bromoform	ND	1.00							
Bromomethane	ND	2.00							
n-Butyl Benzene	ND	1.00							
sec-Butylbenzene	ND	1.00							
tert-Butylbenzene	ND	1.00							
Carbon Tetrachloride	ND	1.00							
Chlorobenzene	ND	1.00							
Chloroethane	ND	2.00							
Chloroform	ND	5.00							
Chloromethane	ND	2.00							
2-Chlorotoluene	ND	1.00							
4-Chlorotoluene	ND	1.00							
Dibromochloromethane	ND	1.00							
1,2-Dibromo-3-chloropropane (DBCP)	ND	5.00							
1,2-Dibromoethane (EDB)	ND	2.00							
Dibromomethane	ND	1.00							
1,2-Dichlorobenzene	ND	1.00							
1,3-Dichlorobenzene	ND	1.00							
1,4-Dichlorobenzene	ND	1.00							
1,1-Dichloroethane	ND	1.00							
1,2-Dichloroethane	ND	1.00							
1,1-Dichloroethene	ND	1.00							
cis-1,2-Dichloroethene	ND	1.00							
trans-1,2-Dichloroethene	ND	1.00							
1,2-Dichloropropane	ND	1.00							
1,3-Dichloropropane	ND	1.00							
2,2-Dichloropropane	ND	1.00							
1,1-Dichloropropene	ND	1.00							
cis-1,3-Dichloropropene	ND	1.00							
trans-1,3-Dichloropropene	ND	1.00							
Diisopropyl Ether (DIPE)	ND	1.00							
Ethylbenzene	ND	1.00							
Ethyl tert-Butyl Ether (ETBE)	ND	1.00							
Hexachlorobutadiene	ND	5.00							
2-Hexanone	ND	20.0							
Isopropylbenzene	ND	1.00							
4-Isopropyltoluene	ND	1.00							
2-Butanone (MEK)	ND	20.0							
Methylene Chloride	ND	2.00							
1-Methylnaphthalene	ND	10.0							
2-Methylnaphthalene	ND	10.0							
4-Methyl-2-pentanone (MIBK)	ND	20.0							
Methyl tert-Butyl Ether (MTBE)	ND	1.00							
Naphthalene	ND	5.00							
n-Propyl Benzene	ND	1.00							
Styrene	ND	1.00							
tert-Amyl Methyl ether (TAME)	ND	1.00							
1,1,1,2-Tetrachloroethane	ND	1.00							
1,1,2,2-Tetrachloroethane	ND	1.00							
Tetrachloroethene	ND	1.00							
1,2,3-Trichlorobenzene	ND	5.00							
1,2,4-Trichlorobenzene	ND	5.00							
1,1,1-Trichloroethane	ND	1.00							
1,1,2-Trichloroethane	ND	1.00							
Trichloroethene	ND	1.00							
Trichlorofluoromethane (Freon-11)	ND	2.00							
1,2,3-Trichloropropane	ND	2.00							
1,2,4-Trimethylbenzene	ND	5.00							
1,3,5-Trimethylbenzene	ND	1.00							



QC Summary Data

Atkins Engineering Associates Inc. 2904 W. 2nd Roswell NM, 88201	Project Name: West Pearl Queen Project Number: 20071-0001 Project Manager: Jessica Atkins	Reported: 6/1/2026 4:50:54PM
--	---	---------------------------------

Volatile Organic Compounds by EPA 8260B

Analyst: BA

Analyte	Result ug/L	Reporting Limit ug/L	Spike Level ug/L	Source Result ug/L	Rec %	Rec Limits %	RPD %	RPD Limit %	Notes
---------	----------------	----------------------------	------------------------	--------------------------	----------	--------------------	----------	-------------------	-------

Blank (2622073-BLK1)

Prepared: 05/27/26 Analyzed: 05/27/26

Toluene	ND	1.00							
Vinyl chloride	ND	2.00							
o-Xylene	ND	1.00							
p,m-Xylene	ND	2.00							
Total Xylenes	ND	1.00							
Surrogate: Bromofluorobenzene	10.2		10.0		102	70-130			
Surrogate: 1,2-Dichloroethane-d4	9.81		10.0		98.1	70-130			
Surrogate: Toluene-d8	10.1		10.0		101	70-130			

LCS (2622073-BS1)

Prepared: 05/27/26 Analyzed: 05/27/26

Acetone	57.7	20.0	100		57.7	20-185			
Benzene	43.1	1.00	50.0		86.2	70-130			
Bromoform	49.3	1.00	50.0		98.6	70-131			
Bromomethane	45.3	2.00	50.0		90.6	22-187			
sec-Butylbenzene	40.4	1.00	50.0		80.7	70-130			
Carbon Tetrachloride	46.1	1.00	50.0		92.2	70-130			
Chlorobenzene	41.2	1.00	50.0		82.5	70-130			
2-Chlorotoluene	43.7	1.00	50.0		87.5	70-130			
Dibromochloromethane	47.1	1.00	50.0		94.2	70-130			
1,2-Dichlorobenzene	42.9	1.00	50.0		85.8	70-130			
1,1-Dichloroethane	46.1	1.00	50.0		92.2	70-130			
1,1-Dichloroethene	42.9	1.00	50.0		85.8	80-120			
2,2-Dichloropropane	43.9	1.00	50.0		87.8	50-160			
cis-1,3-Dichloropropene	46.4	1.00	50.0		92.9	70-130			
Ethylbenzene	43.9	1.00	50.0		87.7	80-120			
Isopropylbenzene	43.7	1.00	50.0		87.4	70-130			
Methyl tert-Butyl Ether (MTBE)	40.8	1.00	50.0		81.5	70-130			
Naphthalene	41.3	5.00	50.0		82.6	70-140			
tert-Amyl Methyl ether (TAME)	39.4	1.00	50.0		78.9	70-130			
Trichloroethene	40.0	1.00	50.0		80.0	70-130			
Toluene	43.6	1.00	50.0		87.1	80-120			
o-Xylene	44.7	1.00	50.0		89.3	70-130			
p,m-Xylene	89.3	2.00	100		89.3	70-130			
Total Xylenes	134	1.00	150		89.3	70-130			
Surrogate: Bromofluorobenzene	10.2		10.0		102	70-130			
Surrogate: 1,2-Dichloroethane-d4	9.71		10.0		97.1	70-130			
Surrogate: Toluene-d8	10.1		10.0		101	70-130			

LCS Dup (2622073-BSD1)

Prepared: 05/27/26 Analyzed: 05/27/26

Acetone	63.6	20.0	100		63.6	20-185	9.66	30	
Benzene	47.6	1.00	50.0		95.2	70-130	9.96	20	
Bromoform	54.4	1.00	50.0		109	70-131	9.80	20	
Bromomethane	49.5	2.00	50.0		98.9	22-187	8.78	20	
sec-Butylbenzene	44.3	1.00	50.0		88.7	70-130	9.35	20	
Carbon Tetrachloride	51.1	1.00	50.0		102	70-130	10.2	20	
Chlorobenzene	45.7	1.00	50.0		91.5	70-130	10.3	20	
2-Chlorotoluene	47.9	1.00	50.0		95.7	70-130	9.00	20	
Dibromochloromethane	52.5	1.00	50.0		105	70-130	10.8	20	
1,2-Dichlorobenzene	47.3	1.00	50.0		94.6	70-130	9.84	20	
1,1-Dichloroethane	50.5	1.00	50.0		101	70-130	9.15	20	
1,1-Dichloroethene	46.3	1.00	50.0		92.7	80-120	7.69	20	
2,2-Dichloropropane	48.1	1.00	50.0		96.2	50-160	9.19	20	
cis-1,3-Dichloropropene	51.7	1.00	50.0		103	70-130	10.8	20	
Ethylbenzene	48.6	1.00	50.0		97.3	80-120	10.3	20	
Isopropylbenzene	48.0	1.00	50.0		95.9	70-130	9.34	20	
Methyl tert-Butyl Ether (MTBE)	44.8	1.00	50.0		89.6	70-130	9.37	20	
Naphthalene	45.9	5.00	50.0		91.8	70-140	10.6	20	
tert-Amyl Methyl ether (TAME)	43.7	1.00	50.0		87.4	70-130	10.3	20	
Trichloroethene	44.6	1.00	50.0		89.1	70-130	10.7	20	
Toluene	48.5	1.00	50.0		97.0	80-120	10.8	20	
o-Xylene	48.8	1.00	50.0		97.6	70-130	8.84	20	



QC Summary Data

Atkins Engineering Associates Inc. 2904 W. 2nd Roswell NM, 88201	Project Name: West Pearl Queen Project Number: 20071-0001 Project Manager: Jessica Atkins	Reported: 6/1/2026 4:50:54PM
--	---	--

Volatile Organic Compounds by EPA 8260B

Analyst: BA

Analyte	Result ug/L	Reporting Limit ug/L	Spike Level ug/L	Source Result ug/L	Rec %	Rec Limits %	RPD %	RPD Limit %	Notes
---------	----------------	----------------------------	------------------------	--------------------------	----------	--------------------	----------	-------------------	-------

LCS Dup (2622073-BSD1)

Prepared: 05/27/26 Analyzed: 05/27/26

p,m-Xylene	98.2	2.00	100	98.2	70-130	9.49	20	
Total Xylenes	147	1.00	150	98.0	70-130	9.27	20	
Surrogate: Bromofluorobenzene	10.4		10.0	104	70-130			
Surrogate: 1,2-Dichloroethane-d4	10.0		10.0	100	70-130			
Surrogate: Toluene-d8	10.2		10.0	102	70-130			



QC Summary Data

Atkins Engineering Associates Inc. 2904 W. 2nd Roswell NM, 88201	Project Name: West Pearl Queen Project Number: 20071-0001 Project Manager: Jessica Atkins	Reported: 6/1/2026 4:50:54PM
--	---	--

Anions by EPA 300.0/9056A

Analyst: DT

Analyte	Result mg/L	Reporting Limit mg/L	Spike Level mg/L	Source Result mg/L	Rec %	Rec Limits %	RPD %	RPD Limit %	Notes
---------	----------------	----------------------------	------------------------	--------------------------	----------	--------------------	----------	-------------------	-------

Blank (2622105-BLK1)

Prepared: 05/28/26 Analyzed: 05/28/26

Chloride	ND	2.00							
----------	----	------	--	--	--	--	--	--	--

LCS (2622105-BS1)

Prepared: 05/28/26 Analyzed: 05/28/26

Chloride	25.6	2.00	25.0		102	90-110			
----------	------	------	------	--	-----	--------	--	--	--

LCS Dup (2622105-BSD1)

Prepared: 05/28/26 Analyzed: 05/28/26

Chloride	25.5	2.00	25.0		102	90-110	0.101	20	
----------	------	------	------	--	-----	--------	-------	----	--

QC Summary Report Comment:

Calculations are based off of the raw (non-rounded) data. However, for reporting purposes all QC data is rounded to three significant figures. Therefore, hand calculated values may differ slightly.



Definitions and Notes

Atkins Engineering Associates Inc. 2904 W. 2nd Roswell NM, 88201	Project Name: West Pearl Queen Project Number: 20071-0001 Project Manager: Jessica Atkins	Reported: 06/01/26 16:50
--	---	------------------------------------

ND Analyte NOT DETECTED at or above the reporting limit

NR Not Reported

RPD Relative Percent Difference

DNI Did Not Ignite

DNR Did not react with the addition of acid or base.

Note (1): Methods marked with ** are non-accredited methods.

Note (2): Soil data is reported on an "as received" weight basis, unless reported otherwise.



Chain of Custody

Client Information				Invoice Information				Lab Use Only				TAT				State			
Client: Atkins Engineering Associates, Inc.				Company: Atkins Engineering Associates, Inc.				Lab WO#		Job Number		1D	2D	3D	Std	NM	CO	UT	TX
Project Name: West Pearl Queen				Address: 2904 W 2nd St.				E 105240		20071.0001									
Project Manager: Jessica Atkins (jessica@atkinseng.com)				City, State, Zip: Roswell, NM 88201															
Address: 2904 W 2nd St.				Phone: 575-624-2450															
City, State, Zip: Roswell, NM 88201				Email: sampling@atkinseng.com															
Phone: 575-624-2450				Miscellaneous: cc: gabi@atkinseng.com															
Email: sampling@atkinseng.com																			
Sample Information										Analysis and Method						EPA Program			
Time Sampled	Date Sampled	Matrix	No. of Containers	Sample ID	Field Filter	Lab Number	DRO/DRO by 8015	GRO/DRO by 8015	BTEX by 8021	VOC by 8260	Chloride 300.0	BGDOC - NM	TCEQ 1005 - TX	RCRA 8 Metals	Cation/Anion Pkg	SDWA	CWA	RCRA	
-	5/24/26	AQ	4	MW-2						X	X								
1310		AQ		MW-5R		1													4.7
1152		AQ		MW-7R		2													4.5
1219		AQ		MW-14		3													4.8
1245		AQ		MW-24		4													4.8
-		AQ		Trip Blank		5													4.5
Additional Instructions:																			
I, (field sampler), attest to the validity and authenticity of this sample. I am aware that tampering with or intentionally mislabeling the sample location, date or time of collection is considered fraud and may be grounds for legal action.																			
Sampled by: <u>K. Arredondo</u>																			
Relinquished by: (Signature)		Date		Time		Received by: (Signature)		Date		Time		Samples requiring thermal preservation must be received on ice the day they are sampled or received packed in ice at an avg temp above 0 but less than 6 °C on subsequent days. Lab Use Only Received on ice: <input checked="" type="checkbox"/> Y <input type="checkbox"/> N T1 _____ T2 _____ T3 _____ AVG Temp °C _____							
<u>Miranda</u>		5/26/26		1330		<u>Michelle Gonzales</u>		5/26/26		1330									
<u>Michelle Gonzales</u>		5/26/26		1600		<u>Marissa Gonzales</u>		5/26/26		1600									
<u>Marissa Gonzales</u>		5/26/26		2055		<u>Johnny Archuleta</u>		5/26/26		2055									
Relinquished by: (Signature)		Date		Time		Received by: (Signature)		Date		Time									
<u>Johnny Archuleta</u>		5/26/26		2345		<u>Carla Ma</u>		5/27/26		800									
Sample Matrix: <u>S</u> - Soil, <u>Sd</u> - Solid, <u>Sg</u> - Sludge, <u>A</u> - Aqueous, <u>O</u> - Other										Container Type: <u>g</u> - glass, <u>p</u> - poly/plastic, <u>ag</u> - amber glass, <u>v</u> - VOA									
Note: Samples are discarded 14 days after results are reported unless other arrangements are made. Hazardous samples will be returned to client or disposed of at the client expense. The report for the analysis of the above samples is applicable only to those samples received by the laboratory with this COC. The liability of the laboratory is limited to the amount paid for on the report.																			



Envirotech Analytical Laboratory

Printed: 5/27/2026 10:13:00AM

Sample Receipt Checklist (SRC)

Instructions: Please take note of any NO checkmarks.

If we receive no response concerning these items within 24 hours of the date of this notice, all the samples will be analyzed as requested.

Client: Atkins Engineering Associates Inc. Date Received: 05/27/26 08:00 Work Order ID: E605240
Phone: (575) 626-3993 Date Logged In: 05/26/26 15:20 Logged In By: Noe Soto
Email: Due Date: 06/02/26 17:00 (4 day TAT)

Chain of Custody (COC)

- 1. Does the sample ID match the COC? No
2. Does the number of samples per sampling site location match the COC No
3. Were samples dropped off by client or carrier? Yes
4. Was the COC complete, i.e., signatures, dates/times, requested analyses? Yes
5. Were all samples received within holding time? Yes

Carrier: Courier

Note: Analysis, such as pH which should be conducted in the field, i.e, 15 minute hold time, are not included in this discussion.

Comments/Resolution

Sample Turn Around Time (TAT)

- 6. Did the COC indicate standard TAT, or Expedited TAT? No

Sample Cooler

- 7. Was a sample cooler received? Yes
8. If yes, was cooler received in good condition? Yes
9. Was the sample(s) received intact, i.e., not broken? Yes
10. Were custody/security seals present? No
11. If yes, were custody/security seals intact? NA
12. Was the sample received on ice? Yes

Note: Thermal preservation is not required, if samples are received within 15 minutes of sampling

- 13. See COC for individual sample temps. Samples outside of 0°C-6°C will be recorded in comments.

Sample Container

- 14. Are aqueous VOC samples present? Yes
15. Are VOC samples collected in VOA Vials? Yes
16. Is the head space less than 6-8 mm (pea sized or less)? Yes
17. Was a trip blank (TB) included for VOC analyses? Yes
18. Are non-VOC samples collected in the correct containers? Yes
19. Is the appropriate volume/weight or number of sample containers collected? Yes

Field Label

- 20. Were field sample labels filled out with the minimum information:
Sample ID? Yes
Date/Time Collected? Yes
Collectors name? Yes

Sample Preservation

- 21. Does the COC or field labels indicate the samples were preserved? Yes
22. Are sample(s) correctly preserved? Yes
24. Is lab filtration required and/or requested for dissolved metals? No

Multiphase Sample Matrix

- 26. Does the sample have more than one phase, i.e., multiphase? No
27. If yes, does the COC specify which phase(s) is to be analyzed? NA

Subcontract Laboratory

- 28. Are samples required to get sent to a subcontract laboratory? No
29. Was a subcontract laboratory specified by the client and if so who? NA Subcontract Lab: NA

Client Instruction

Empty box for client instruction.

Comments/Resolution box containing L-NS and R-CM.

Signature of client authorizing changes to the COC or sample disposition.

Date



envirotech Inc.

Sante Fe Main Office
Phone: (505) 476-3441

General Information
Phone: (505) 629-6116

Online Phone Directory
<https://www.emnrd.nm.gov/ocd/contact-us>

State of New Mexico
Energy, Minerals and Natural Resources
Oil Conservation Division
1220 S. St Francis Dr.
Santa Fe, NM 87505

CONDITIONS

Action 596763

CONDITIONS

Operator: ARMSTRONG ENERGY CORP P.O. Box 1973 Roswell, NM 88202	OGRID: 1092
	Action Number: 596763
	Action Type: [UF-GWA] Ground Water Abatement (GROUND WATER ABATEMENT)

CONDITIONS

Created By	Condition	Condition Date
amaxwell	Report accepted for record.	6/24/2026