

## District I

1625 N. French Dr., Hobbs, NM 88240

## District II

1301 W. Grand Avenue, Artesia, NM 88210

## District III

1000 Rio Brazos Road, Aztec, NM 87410

## District IV

1220 S. St. Francis Dr., Santa Fe, NM 87505

State of New Mexico  
Energy Minerals and Natural Resources

Form C-101

May 27, 2004

## Oil Conservation Division

1220 South St. Francis Dr.

Santa Fe, NM 87505

Submit to appropriate District Office

☐ AMENDED REPORT

## APPLICATION FOR PERMIT TO DRILL, RE-ENTER, DEEPEN, PLUGBACK, OR ADD A ZONE

<sup>1</sup> Operator Name and Address <b>EL PASO ENERGY RATON, L.L.C. PO BOX 190 RATON, NM 87740</b>		<sup>2</sup> OGRID Number <b>180514</b>
		<sup>3</sup> API Number <b>30.007-20577</b>
<sup>4</sup> Property Code <b>25179</b>	<sup>5</sup> Property Name <b>Vermejo Park Ranch (VPR)</b>	<sup>6</sup> Well No. <b>VPR D 174</b>
<sup>9</sup> Proposed Pool 1 <b>Castle Rock Park - Vermejo</b>		<sup>10</sup> Proposed Pool 2

<sup>7</sup> Surface Location

UL or lot no.	Section	Township	Range	Lot Idn	Feet from the	North/South line	Feet from the	East/West line	County
<b>C</b>	<b>17</b>	<b>30N</b>	<b>19E</b>	<b>C</b>	<b>857</b>	<b>North</b>	<b>1443</b>	<b>West</b>	<b>Colfax</b>

<sup>8</sup> Proposed Bottom Hole Location If Different From Surface

UL or lot no.	Section	Township	Range	Lot Idn	Feet from the	North/South line	Feet from the	East/West line	County
---------------	---------	----------	-------	---------	---------------	------------------	---------------	----------------	--------

## Additional Well Information

<sup>11</sup> Work Type Code <b>N</b>	<sup>12</sup> Well Type Code <b>G</b>	<sup>13</sup> Cable/Rotary <b>Rotary/Air</b>	<sup>14</sup> Lease Type Code <b>P</b>	<sup>15</sup> Ground Level Elevation <b>7,400'</b>
<sup>16</sup> Multiple <b>Yes</b>	<sup>17</sup> Proposed Depth <b>1,905'</b>	<sup>18</sup> Formation <b>Vermejo</b>	<sup>19</sup> Contractor <b>Pense</b>	<sup>20</sup> Spud Date <b>April 1, 2005</b>
Depth to Groundwater		Distance from nearest fresh water well		Distance from nearest surface water
Pit: Liner: Synthetic <input type="checkbox"/> _____ mils thick Clay <input type="checkbox"/> Pit Volume: _____ bbls Drilling Method: _____ Closed-Loop System <input type="checkbox"/> Fresh Water <input type="checkbox"/> Brine <input type="checkbox"/> Diesel/Oil-based <input type="checkbox"/> Gas/Air <input type="checkbox"/>				

<sup>21</sup> Proposed Casing and Cement Program

Hole Size	Casing Size	Casing weight/foot	Setting Depth	Sacks of Cement	Estimated TOC
<b>11'</b>	<b>8 5/8"</b>	<b>24#</b>	<b>330'</b>	<b>100 sks</b>	<b>Surface</b>
<b>7 7/8"</b>	<b>5 1/2"</b>	<b>17#</b>	<b>1,905'</b>	<b>285 sks</b>	<b>Surface</b>

<sup>22</sup> Describe the proposed program. If this application is to DEEPEN or PLUG BACK, give the data on the present productive zone and proposed new productive zone. Describe the blowout prevention program, if any. Use additional sheets if necessary.

1. Drill 11" hole to + / - 330' with air.
2. Set 8 5/8" surface casing and cement to surface with 100 sks of cement.
3. Drill 7 7/8" hole to proposed depth 1,905' with air. Run open hole log.
4. Set 5 1/2" production casing to TD and cement to surface. Cement volumes calculated from open hole log.
5. Run Cement Bond Log.
6. Perforate and stimulate the Vermejo and/or Raton coals. Clean out well bore and run production equipment.

<sup>23</sup> I hereby certify that the information given above is true and complete to the best of my knowledge and belief. I further certify that the drilling pit will be constructed according to NMOCD guidelines ☐, a general permit ☐, or an (attached) alternative OCD-approved plan ☐.

Printed name: **Donald R. Lankford** *DR Lankford*Title: **Production Manager**E-mail Address: **don.lankford@elpaso.com**Date: **01/21/05**Phone: **(505) 445-6721**

OIL CONSERVATION DIVISION

Approved by: *[Signature]*Title: **DISTRICT SUPERVISOR**Approval Date: **1/24/05**Expiration Date: **1/24/06**Conditions of Approval Attached ☐

District I  
1625 N. French Dr., Hobbs, NM 88240  
District II  
1301 W. Grand Avenue, Artesia, NM 88210  
District III  
1000 Rio Brazos Rd., Aztec, NM 87410  
District IV  
1220 S. St. Francis Dr., Santa Fe, NM 87505

State of New Mexico  
Energy, Minerals & Natural Resources Department  
**OIL CONSERVATION DIVISION**  
1220 South St. Francis Dr.  
Santa Fe, NM 87505

Form C-102  
Revised August 15, 2000  
Submit to Appropriate District Office  
State Lease - 4 Copies  
Fee Lease - 3 Copies

☐ AMENDED REPORT

**WELL LOCATION AND ACREAGE DEDICATION PLAT**

<sup>1</sup> API Number		<sup>2</sup> Pool Code 97046		<sup>3</sup> Pool Name CASTLE ROCK PARK - VERMEJO GAS	
<sup>4</sup> Property Code 25179		<sup>5</sup> Property Name VERMEJO PARK RANCH			<sup>6</sup> Well Number VPR'D-174
<sup>7</sup> OGRID No. 180514		<sup>8</sup> Operator Name EL PASO ENERGY RATON, L.L.C.			<sup>9</sup> Elevation 7400'

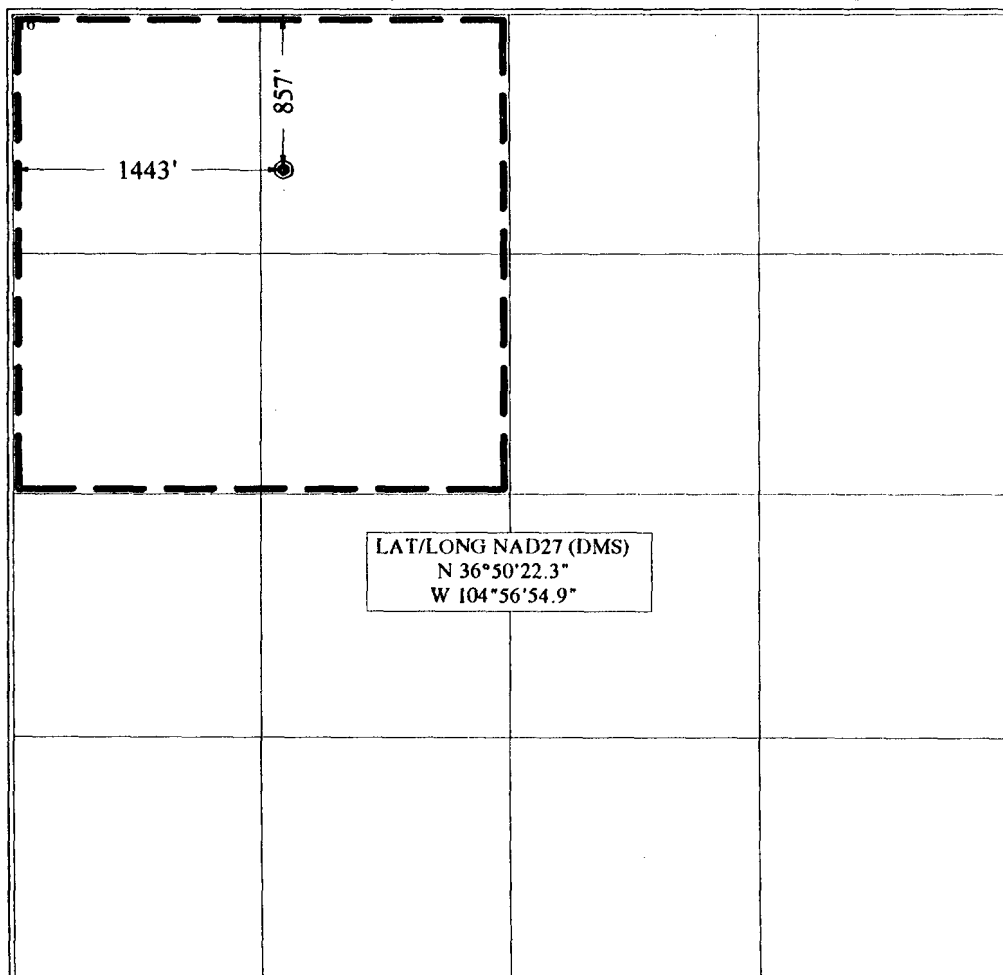
**<sup>10</sup> Surface Location**

UL or lot no. C	Section 17	Township T 30 N	Range R 19 E	Lot Idn C	Feet from the 857	North/South line NORTH	Feet from the 1443	East/West line WEST	County COLFAX
--------------------	---------------	--------------------	-----------------	--------------	----------------------	---------------------------	-----------------------	------------------------	------------------

**<sup>11</sup> Bottom Hole Location If Different From Surface**

UL or lot no.	Section	Township	Range	Lot Idn	Feet from the	North/South line	Feet from the	East/West line	County
<sup>12</sup> Dedicated Acres		<sup>13</sup> Joint or Infill		<sup>14</sup> Consolidation Code		<sup>15</sup> Order No.			

NO ALLOWABLE WILL BE ASSIGNED TO THIS COMPLETION UNTIL ALL INTERESTS HAVE BEEN CONSOLIDATED OR A NON-STANDARD UNIT HAS BEEN APPROVED BY THE DIVISION



**<sup>17</sup> OPERATOR CERTIFICATION**

I hereby certify that the information contained herein is true and complete to the best of my knowledge and belief.

Signature

*DR Lankford*

Printed Name DONALD R. LANKFORD

Title SENIOR PETROLEUM ENGINEER

Date

**<sup>18</sup> SURVEYOR CERTIFICATION**

I hereby certify that the well location shown on this plat was plotted from field notes of actual surveys made by me or under my supervision, and that the same is true and correct to the best of my belief.

January 10, 2005

Date of Survey

Signature and Seal of Professional Surveyor:

*[Signature]*  
Certificate Number NM LS NO. 5103