

District I  
1615 N. French Dr., Hobbs, NM 88240  
District II  
1301 W. Grand Avenue, Artesia, NM 88210  
District III  
1000 Rio Brazos Road, Aztec, NM 87410  
District IV  
1220 S. St. Francis Dr., Santa Fe, NM 87505

State of New Mexico  
Energy Minerals and Natural Resources

RECEIVED

Form C-101  
May 27, 2004

Oil Conservation Division FEB 17 2005 Submit to appropriate District Office  
1220 South St. Francis Dr.  
Santa Fe, NM 87505 OIL CONSERVATION DIVISION ☐ AMENDED REPORT

**APPLICATION FOR PERMIT TO DRILL, RE-ENTER, DEEPEN, PLUGBACK, OR ADD A ZONE**

<sup>1</sup> Operator Name and Address <b>EL PASO ENERGY RATON, L.L.C. PO BOX 190 RATON, NM 87740</b>		<sup>2</sup> OGRID Number <b>180514</b>
		<sup>3</sup> API Number <b>30-007-20513</b>
<sup>4</sup> Property Code <b>25179</b>	<sup>5</sup> Property Name <b>VERMEJO PARK RANCH (VPR)</b>	<sup>6</sup> Well No. <b>VPR D 149H</b>
<sup>9</sup> Proposed Pool 1 <b>VERMEJO</b>		<sup>10</sup> Proposed Pool 2 <b>RATON</b>

**7 Surface Location**

UL or lot no.	Section	Township	Range	Lot Idn	Feet from the	North/South line	Feet from the	East/West line	County
<b>P</b>	<b>23</b>	<b>31N</b>	<b>17E</b>	<b>P</b>	<b>1302</b>	<b>South</b>	<b>819</b>	<b>East</b>	<b>Colfax</b>

**8 Proposed Bottom Hole Location If Different From Surface**

UL or lot no.	Section	Township	Range	Lot Idn	Feet from the	North/South line	Feet from the	East/West line	County
<b>J</b>	<b>23</b>	<b>31N</b>	<b>17E</b>	<b>J</b>	<b>2590</b>	<b>South</b>	<b>2590</b>	<b>East</b>	<b>Colfax</b>

**Additional Well Information**

<sup>11</sup> Work Type Code <b>N</b>	<sup>12</sup> Well Type Code <b>G</b>	<sup>13</sup> Cable/Rotary <b>Rotary/Fluid</b>	<sup>14</sup> Lease Type Code <b>P</b>	<sup>15</sup> Ground Level Elevation <b>8,223'</b>
<sup>16</sup> Multiple <b>Yes</b>	<sup>17</sup> Proposed Depth <b>1,034' TVD 3,223' TMD</b>	<sup>18</sup> Formation <b>Upper Vermejo</b>	<sup>19</sup> Contractor <b>Encore</b>	<sup>20</sup> Spud Date <b>June 15, 2005</b>
Depth to Groundwater		Distance from nearest fresh water well		Distance from nearest surface water
Pit: Liner: Synthetic <input type="checkbox"/> _____ mils thick Clay <input type="checkbox"/> Pit Volume: _____ bbls Drilling Method: <b>Rotary/Fluid</b> Closed-Loop System <input type="checkbox"/> Fresh Water <input checked="" type="checkbox"/> Brine <input type="checkbox"/> Diesel/Oil-based <input type="checkbox"/> Gas/Air <input type="checkbox"/>				

**21 Proposed Casing and Cement Program**

Hole Size	Casing Size	Casing weight/foot	Setting Depth	Sacks of Cement	Estimated TOC
<b>14 3/8"</b>	<b>9 5/8"</b>	<b>36#</b>	<b>360'</b>	<b>143 sx</b>	<b>SURFACE</b>
<b>9 7/8"</b>	<b>7"</b>	<b>23#</b>	<b>1,651'</b>	<b>210 sx</b>	<b>SURFACE</b>
<b>6 1/8"</b>	<b>4 1/2"</b>	<b>11.6#</b>	<b>974'- 3,223' TMD</b>	<b>None</b>	<b>Liner</b>

<sup>22</sup> Describe the proposed program. If this application is to DEEPEN or PLUG BACK, give the data on the present productive zone and proposed new productive zone. Describe the blowout prevention program, if any. Use additional sheets if necessary.

1. Set RBP in 7" casing at 1,080'.
2. Set Whip stock in 7" casing at 974' TVD.
3. Cut window in 7" casing at 965'- 974'.
4. Drill a 6 1/8" hole in a 70' (20°) Radius curve to a 2,189' horizontal lateral in the upper Vermejo coal (Top 1,034' TVD).
5. Run 4 1/2" liner (No Cement) the length of the lateral.
6. Retrieve Whip stock and RBP.
7. Clean out well bore , run production equipment, and put well back on production.

<sup>23</sup> I hereby certify that the information given above is true and complete to the best of my knowledge and belief. I further certify that the drilling pit will be constructed according to NMOCD guidelines ☐, a general permit ☐, or an (attached) alternative OCD-approved plan ☐.

Printed name: **William M. Ordemann** WMO

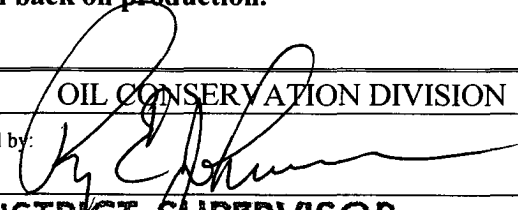
Title: **Production Engineer**

E-mail Address: bill.ordemann@elpaso.com

Date: **02/15/05**

Phone: **(505) 445-6724**

OIL CONSERVATION DIVISION

Approved by: 

Title: **DISTRICT SUPERVISOR**

Approval Date: **2/28/05**

Expiration Date: **2/28/06**

Conditions of Approval Attached ☐

WELL LOCATION AND ACREAGE DEDICATION PLAT

<sup>1</sup> API Number		<sup>2</sup> Pool Code 97046		<sup>3</sup> Pool Name CASTLE ROCK PARK - VERMEJO GAS	
<sup>4</sup> Property Code 25179		<sup>5</sup> Property Name VERMEJO PARK RANCH			<sup>6</sup> Well Number VPR'D'-149
<sup>7</sup> OGRID No. 180514		<sup>8</sup> Operator Name EL PASO ENERGY RATON, L.L.C.			<sup>9</sup> Elevation 8223'

<sup>10</sup> Surface Location

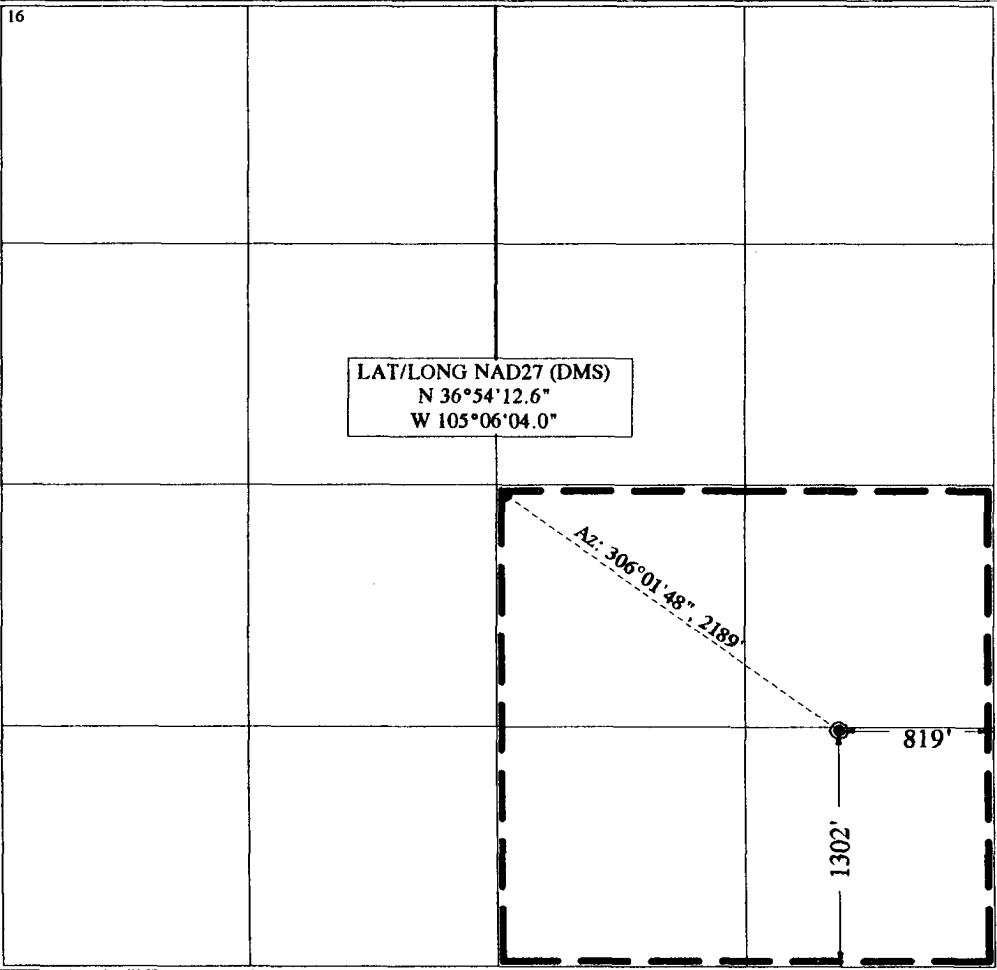
UL or lot no. P	Section 23	Township T 31 N	Range R 17 E	Lot Idn P	Feet from the 1302	North/South line SOUTH	Feet from the 819	East/West line EAST	County COLFAX
--------------------	---------------	--------------------	-----------------	--------------	-----------------------	---------------------------	----------------------	------------------------	------------------

<sup>11</sup> Bottom Hole Location If Different From Surface

UL or lot no. J	Section 23	Township T 31 N	Range R 17 E	Lot Idn J	Feet from the 2590	North/South line FSL	Feet from the 2590	East/West line FEL	County COLFAX
--------------------	---------------	--------------------	-----------------	--------------	-----------------------	-------------------------	-----------------------	-----------------------	------------------

<sup>12</sup> Dedicated Acres	<sup>13</sup> Joint or Infill	<sup>14</sup> Consolidation Code	<sup>15</sup> Order No.
-------------------------------	-------------------------------	----------------------------------	-------------------------

NO ALLOWABLE WILL BE ASSIGNED TO THIS COMPLETION UNTIL ALL INTERESTS HAVE BEEN CONSOLIDATED OR A NON-STANDARD UNIT HAS BEEN APPROVED BY THE DIVISION



17 OPERATOR CERTIFICATION

I hereby certify that the information contained herein is true and complete to the best of my knowledge and belief.

Signature

WILLIAM M. ORDERMANN

Printed Name WILLIAM ORDERMANN

Title PRODUCTION ENGINEER

2-9-05

Date

18 SURVEYOR CERTIFICATION

I hereby certify that the well location shown on this plat was plotted from field notes of actual surveys made by me or under my supervision, and that the same is true and correct to the best of my belief.

February 4, 2005

Date of Survey

Signature and Seal of Professional Surveyor:

Certificate Number

NM LS NO: 9103