

District I
PO Box 1980, Hobbs NM 88241-1980
District II
PO Drawer KK, Artesia, NM 87211-0719
District III
1000 Rio Brazos Rd., Aztec, NM 87410
District IV
PO Box 2088, Santa Fe, NM 87504-2088

State of New Mexico
Energy, Minerals & Natural Resources Department

OIL CONSERVATION DIVISION
PO Box 2088
Santa Fe, NM 87504-2088

Form C-102
Revised February 21, 1994
Instructions on back
Submit to Appropriate District Office
State Lease - 4 Copies
Fee Lease - 3 Copies
☐ AMENDED REPORT

WELL LOCATION AND ACREAGE DEDICATION PLAT

¹ API Number	² Pool Code 71629	³ Pool Name Basin Fruitland Coal
⁴ Property Code 000689	⁵ Property Name Howell Gas Com	⁶ Well Number # 1S
⁷ OGRID No. 000778	⁸ Operator Name BP AMERICA PRODUCTION COMPANY	⁹ Elevation 5769

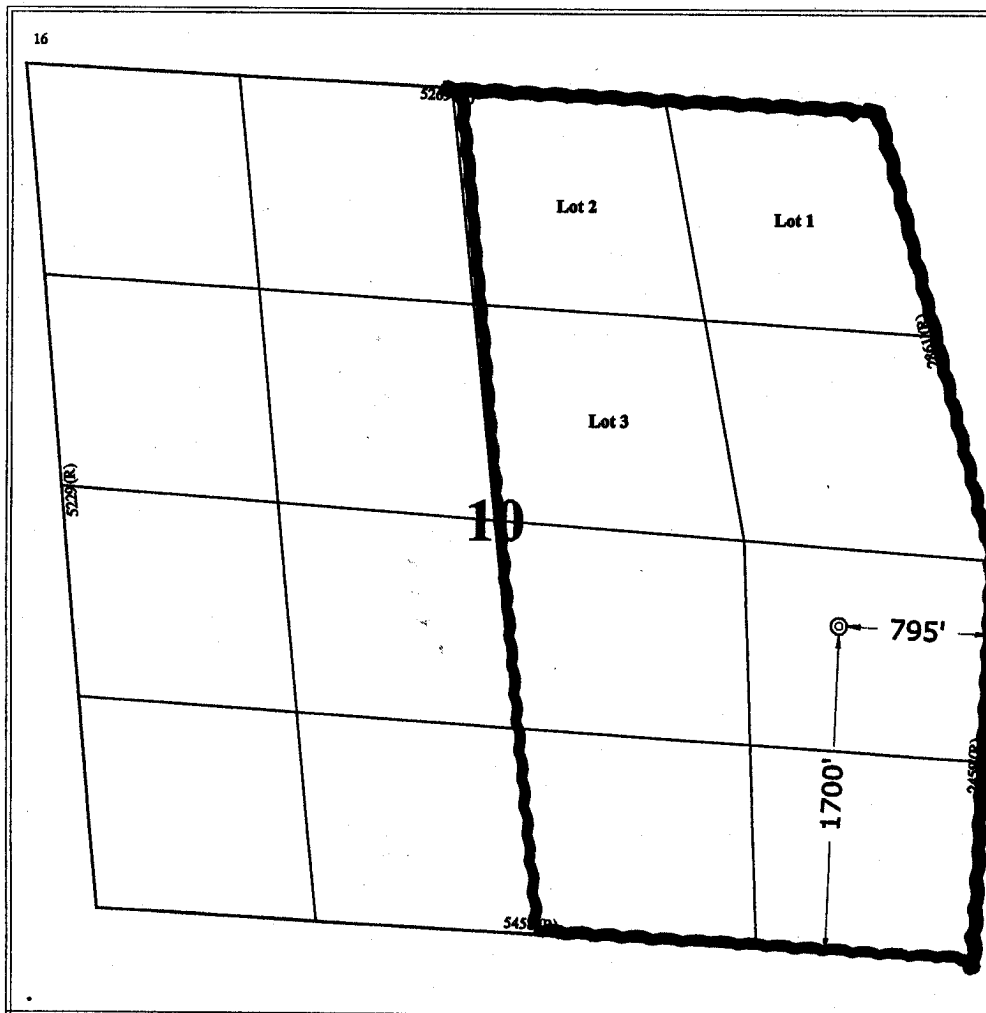
¹⁰ Surface Location

UL or Lot No. I	Section 10	Township 30 N	Range 8 W	Lot Idn	Feet from the 1700	North/South line SOUTH	Feet from the 795	East/West line EAST	County SAN JUAN
--------------------	---------------	------------------	--------------	---------	-----------------------	---------------------------	----------------------	------------------------	--------------------

¹¹ Bottom Hole Location If Different From Surface

⁷ UL or lot no.	Section	Township	Range	Lot Idn	Feet from the	North/South line	Feet from the	East/West line	County
¹² Dedicated Acres 330.3	¹³ Joint or Infill	¹⁴ Consolidation Code	¹⁵ Order No.						

NO ALLOWABLE WILL BE ASSIGNED TO THIS COMPLETION UNTIL ALL INTERESTS HAVE BEEN CONSOLIDATED
OR A NON-STANDARD UNIT HAS BEEN APPROVED BY THE DIVISION



¹⁷ OPERATOR CERTIFICATION

I hereby certify that the information contained herein is true and complete to the best of my knowledge and belief.

Mary Corley
Signature
MARY CORLEY
Printed Name
Sr. Regulatory Analyst
Title
07.27.2004
Date

¹⁸ SURVEYOR CERTIFICATION

I hereby certify that the well location shown on this plat was plotted from field notes of actual surveys made by me or under my supervision, and that the same is true and correct to the best of my belief.

September 24, 2003
Date of Survey
Signature and Seal of Professional Surveyor

GARY D. VANN
GARY D. VANN
NEW MEXICO
REGISTERED PROFESSIONAL LAND SURVEYOR
7016
Certificate Number