

State of New Mexico
Energy, Minerals and Natural Resources
Oil Conservation Division
1220 S. St Francis Dr.
Santa Fe, NM 87505

APPLICATION FOR PERMIT TO DRILL, RE-ENTER, DEEPEN, PLUGBACK, OR ADD A ZONE

1. Operator Name and Address PATINA SAN JUAN INCORPORATED 1625 BROADWAY DENVER, CO 80202		2. OGRID Number 173252
		3. API Number 30-045-33583
4. Property Code 25016	5. Property Name RIO BRAVO	6. Well No. 005

7. Surface Location

UL - Lot	Section	Township	Range	Lot Idn	Feet From	N/S Line	Feet From	E/W Line	County
E	27	31N	13W	E	1505	N	1245	W	SAN JUAN

8. Pool Information

BASIN DAKOTA (PRORATED GAS)	71599
BLANCO-MESAVERDE (PRORATED GAS)	72319
BASIN FRUITLAND COAL (GAS)	71629

Additional Well Information

9. Work Type New Well	10. Well Type GAS	11. Cable/Rotary	12. Lease Type Private	13. Ground Level Elevation 5673
14. Multiple Y	15. Proposed Depth 6600	16. Formation Dakota Formation	17. Contractor	18. Spud Date 3/1/2006
Depth to Ground water 100		Distance from nearest fresh water well > 1000		Distance to nearest surface water > 1000
Pit: Liner: Synthetic <input checked="" type="checkbox"/> 14 miles thick Clay <input type="checkbox"/> Pit Volume: 500 bbls Drilling Method: Closed Loop System <input type="checkbox"/> Fresh Water <input checked="" type="checkbox"/> Brine <input type="checkbox"/> Diesel/Oil-based <input type="checkbox"/> Gas/Air <input type="checkbox"/>				

19. Proposed Casing and Cement Program

Type	Hole Size	Casing Type	Casing Weight/ft	Setting Depth	Sacks of Cement	Estimated TOC
Surf	13.5	9.625	36	300	225	0
Int1	8.75	7	23	4600	435	0
Prod	6.25	4.5	11.6	6600	175	4300

Casing/Cement Program: Additional Comments

--

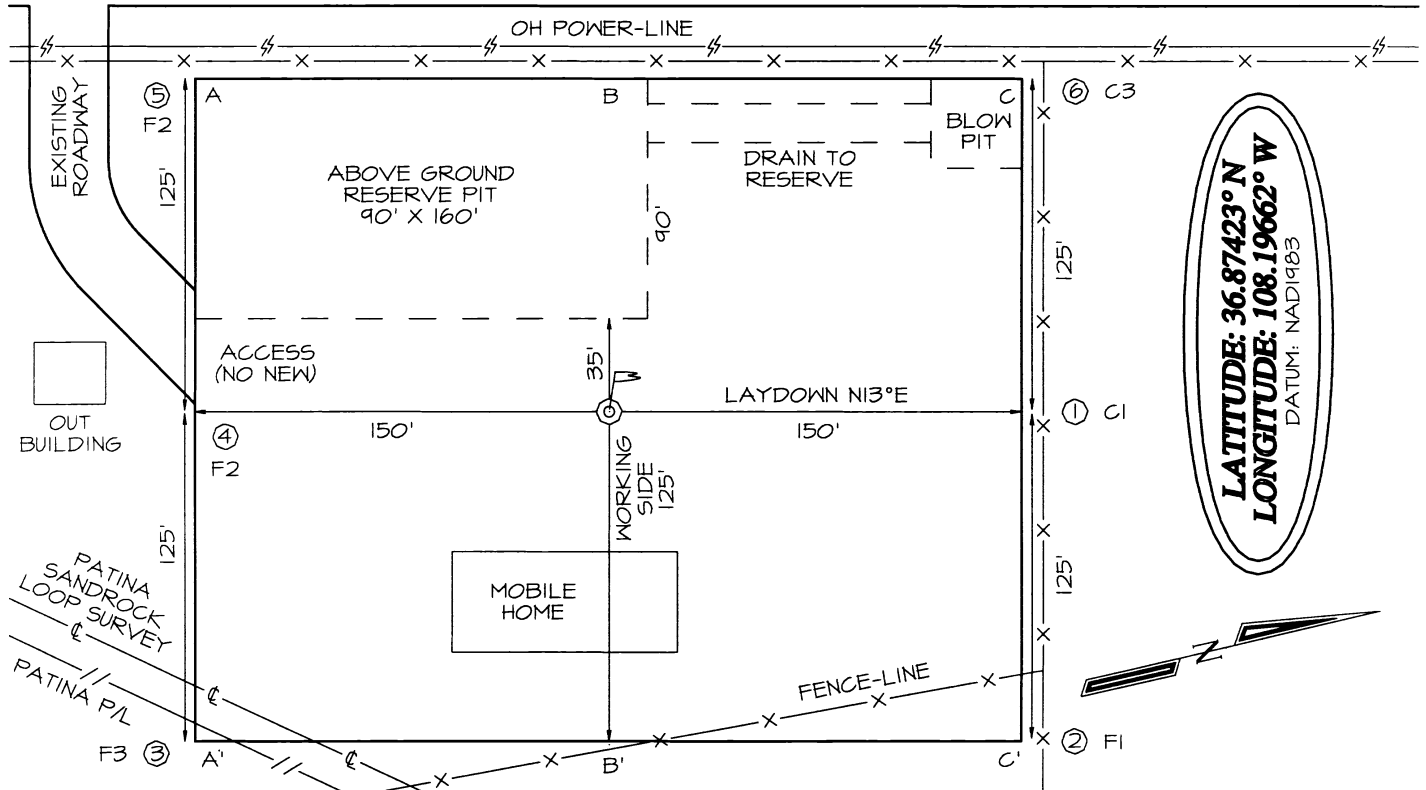
Proposed Blowout Prevention Program

Type	Working Pressure	Test Pressure	Manufacturer
Blind	2000	1000	
Pipe	2000	1000	

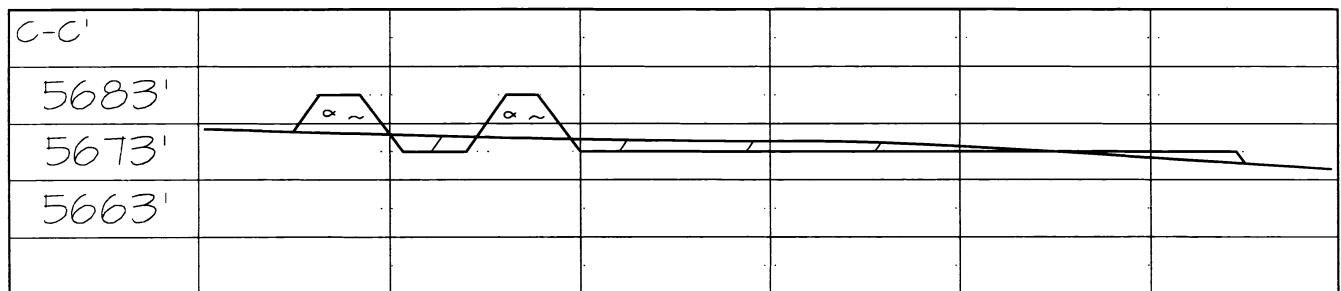
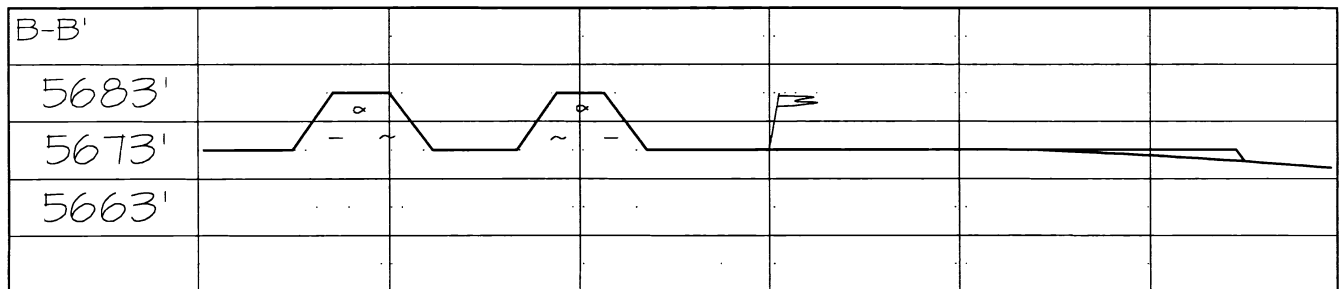
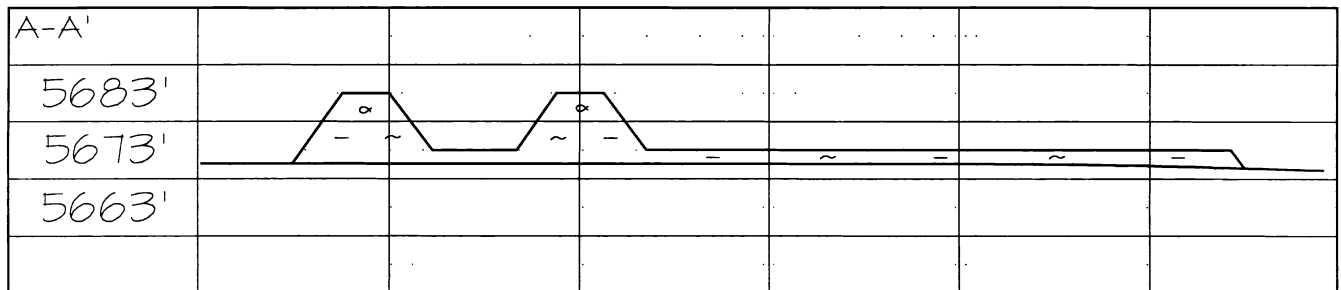
I hereby certify that the information given above is true and complete to the best of my knowledge and belief. I further certify that the drilling pit will be constructed according to NMOCD guidelines <input checked="" type="checkbox"/> a general permit <input type="checkbox"/> or an (attached) alternative OCD-approved plan <input type="checkbox"/> .	OIL CONSERVATION DIVISION	
Printed Name: Electronically filed by Jean Muse	Approved By: Charlie Perrin	
Title: Manager	Title: District Supervisor	
Email Address: jmuse@nobleenergyinc.com	Approved Date: 2/13/2006	Expiration Date: 2/13/2007
Date: 2/8/2006	Phone: 505-632-8056	

PATINA SAN JUAN, INC. RIO BRAVO 27 #05
1505' FNL & 1245' FWL, SECTION 27, T31N, R13W, NMPM
SAN JUAN COUNTY, NEW MEXICO ELEVATION: 5673'

STATE HIGHWAY #170



LATITUDE: 36.87423° N
LONGITUDE: 108.19662° W
 DATUM: NAD1983



District I
 1625 N. French Dr., Hobbs, NM 88240
 Phone:(505) 393-6161 Fax:(505) 393-0720

District II
 1301 W. Grand Ave., Artesia, NM 88210
 Phone:(505) 748-1283 Fax:(505) 748-9720

District III
 1000 Rio Brazos Rd., Aztec, NM 87410
 Phone:(505) 334-6178 Fax:(505) 334-6170

District IV
 1220 S. St Francis Dr., Santa Fe, NM 87505
 Phone:(505) 476-3470 Fax:(505) 476-3462

State of New Mexico
Energy, Minerals and Natural Resources
Oil Conservation Division
1220 S. St Francis Dr.
Santa Fe, NM 87505

Form C-102
 Permit 22633

WELL LOCATION AND ACREAGE DEDICATION PLAT

1. API Number 30-045-33583	2. Pool Code 71599	3. Pool Name BASIN DAKOTA (PRORATED GAS)
4. Property Code 25016	5. Property Name RIO BRAVO	6. Well No. 005
7. OGRID No. 173252	8. Operator Name PATINA SAN JUAN INCORPORATED	9. Elevation 5673

10. Surface Location

UL - Lot	Section	Township	Range	Lot Idn	Feet From	N/S Line	Feet From	E/W Line	County
E	27	31N	13W		1505	N	1245	W	SAN JUAN

11. Bottom Hole Location If Different From Surface

UL - Lot	Section	Township	Range	Lot Idn	Feet From	N/S Line	Feet From	E/W Line	County
12. Dedicated Acres 329.25		13. Joint or Infill		14. Consolidation Code		15. Order No.			

NO ALLOWABLE WILL BE ASSIGNED TO THIS COMPLETION UNTIL ALL INTERESTS HAVE BEEN CONSOLIDATED OR A NON-STANDARD UNIT HAS BEEN APPROVED BY THE DIVISION

	OPERATOR CERTIFICATION
	<p><i>I hereby certify that the information contained herein is true and complete to the best of my knowledge and belief, and that this organization either owns a working interest or unleased mineral interest in the land including the proposed bottom hole location(s) or has a right to drill this well at this location pursuant to a contract with an owner of such a mineral or working interest, or to a voluntary pooling agreement or a compulsory pooling order heretofore entered by the division.</i></p>
	<p>E-Signed By: Jean Muse Title: Manager Date: 2/8/2006</p>
	SURVEYOR CERTIFICATION
	<p><i>I hereby certify that the well location shown on this plat was plotted from field notes of actual surveys made by me or under my supervision, and that the same is true and correct to the best of my belief.</i></p>
	<p>Surveyed By: Jason Edwards Date of Survey: 1/25/2006 Certificate Number: 15269</p>

District I
PO Box 1980, Hobbs, NM 88241-1980

State of New Mexico
Energy, Minerals & Natural Resources Department

Form C-102
Revised February 21, 1994
Instructions on back
Submit to Appropriate District Office
State Lease - 4 Copies
Fee Lease - 3 Copies

District II
PO Drawer DD, Artesia, NM 88211-0719

OIL CONSERVATION DIVISION
PO Box 2088
Santa Fe, NM 87504-2088

District III
1000 Rio Brazos Rd., Aztec, NM 87410

District IV
PO Box 2088, Santa Fe, NM 87504-2088

☐ AMENDED REPORT

WELL LOCATION AND ACREAGE DEDICATION PLAT

*API Number	*Pool Code 71599 / 71629	*Pool Name BASIN DAKOTA / BASIN FRUITLAND COAL
*Property Code	*Property Name RIO BRAVO 27	*Well Number 05
*GRID No. 173252	*Operator Name PATINA SAN JUAN, INC.	*Elevation 5673'

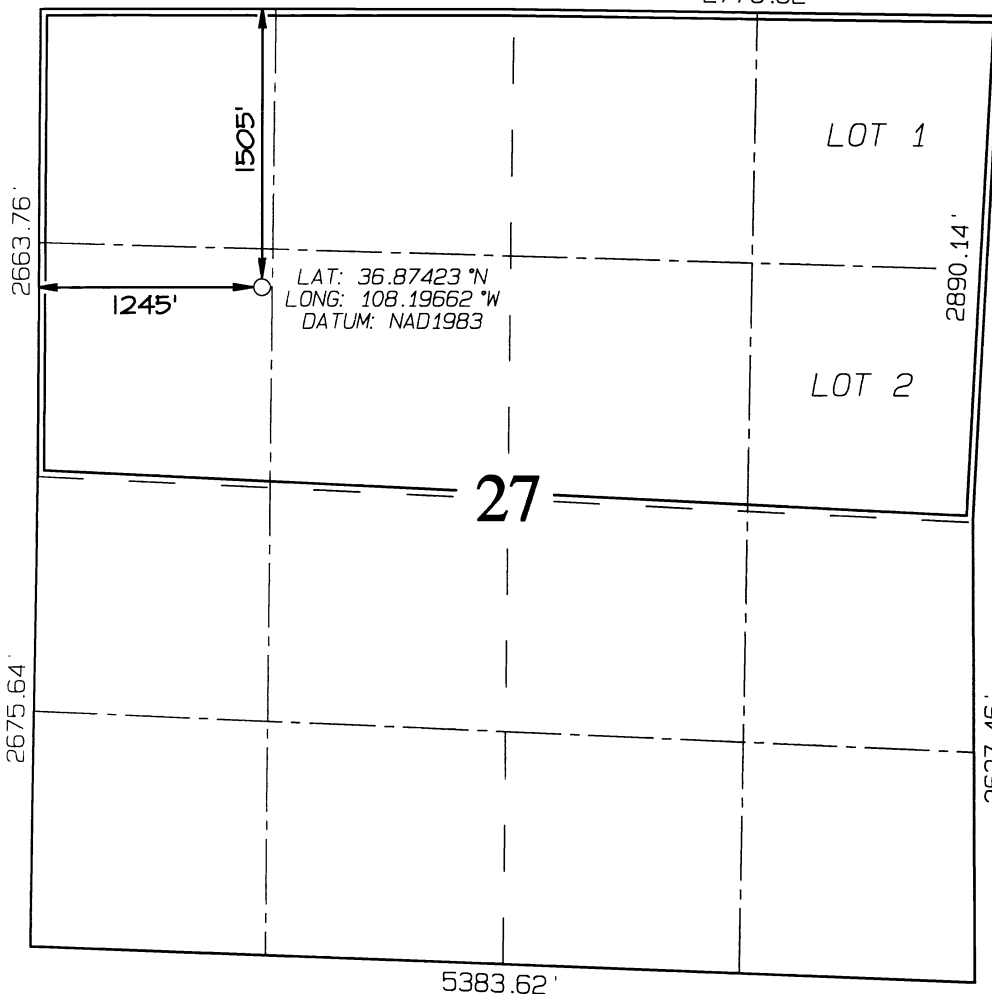
¹⁰ Surface Location

UL or lot no.	Section	Township	Range	Lot Idn	Feet from the	North/South line	Feet from the	East/West line	County
E	27	31N	13W		1505	NORTH	1245	WEST	SAN JUAN

¹¹ Bottom Hole Location If Different From Surface

UL or lot no.	Section	Township	Range	Lot Idn	Feet from the	North/South line	Feet from the	East/West line	County
¹² Dedicated Acres 329.25 Acres - (N/2)					¹³ Joint or Infill		¹⁴ Consolidation Code		¹⁵ Order No.

NO ALLOWABLE WILL BE ASSIGNED TO THIS COMPLETION UNTIL ALL INTERESTS HAVE BEEN CONSOLIDATED
OR A NON-STANDARD UNIT HAS BEEN APPROVED BY THE DIVISION
2693.46' 2776.62'



¹⁷ OPERATOR CERTIFICATION

I hereby certify that the information contained herein is true and complete to the best of my knowledge and belief

Signature

Printed Name

Title

Date

¹⁸ SURVEYOR CERTIFICATION

I hereby certify that the well location shown on this plat was plotted from field notes of actual surveys made by me or under my supervision, and that the same is true and correct to the best of my belief.

Survey Date: JANUARY 25, 2006

Signature and Seal of Professional Surveyor



JASON C. EDWARDS
Certificate Number 15269

District I
 1625 N. French Dr., Hobbs, NM 88240
 Phone:(505) 393-6161 Fax:(505) 393-0720

District II
 1301 W. Grand Ave., Artesia, NM 88210
 Phone:(505) 748-1283 Fax:(505) 748-9720

District III
 1000 Rio Brazos Rd., Aztec, NM 87410
 Phone:(505) 334-6178 Fax:(505) 334-6170

District IV
 1220 S. St Francis Dr., Santa Fe, NM 87505
 Phone:(505) 476-3470 Fax:(505) 476-3462

State of New Mexico
Energy, Minerals and Natural Resources
Oil Conservation Division
1220 S. St Francis Dr.
Santa Fe, NM 87505

Form C-102
 Permit 22633

WELL LOCATION AND ACREAGE DEDICATION PLAT

1. API Number 30-045-33583	2. Pool Code 71629	3. Pool Name BASIN FRUITLAND COAL (GAS)
4. Property Code 25016	5. Property Name RIO BRAVO	6. Well No. 005
7. OGRID No. 173252	8. Operator Name PATINA SAN JUAN INCORPORATED	9. Elevation 5673

10. Surface Location

UL - Lot	Section	Township	Range	Lot Idn	Feet From	N/S Line	Feet From	E/W Line	County
E	27	31N	13W		1505	N	1245	W	SAN JUAN

11. Bottom Hole Location If Different From Surface

UL - Lot	Section	Township	Range	Lot Idn	Feet From	N/S Line	Feet From	E/W Line	County
12. Dedicated Acres 329.25	13. Joint or Infill	14. Consolidation Code N/A	15. Order No.						

NO ALLOWABLE WILL BE ASSIGNED TO THIS COMPLETION UNTIL ALL INTERESTS HAVE BEEN CONSOLIDATED OR A NON-STANDARD UNIT HAS BEEN APPROVED BY THE DIVISION

	OPERATOR CERTIFICATION <i>I hereby certify that the information contained herein is true and complete to the best of my knowledge and belief, and that this organization either owns a working interest or unleased mineral interest in the land including the proposed bottom hole location(s) or has a right to drill this well at this location pursuant to a contract with an owner of such a mineral or working interest, or to a voluntary pooling agreement or a compulsory pooling order heretofore entered by the division.</i> E-Signed By: Jean Muse Title: Manager Date: 2/8/2006	
	SURVEYOR CERTIFICATION <i>I hereby certify that the well location shown on this plat was plotted from field notes of actual surveys made by me or under my supervision, and that the same is true and correct to the best of my belief.</i> Surveyed By: Jason Edwards Date of Survey: 1/25/2006 Certificate Number: 15269	