

State of New Mexico
Energy, Minerals and Natural Resources
Oil Conservation Division
1220 S. St Francis Dr.
Santa Fe, NM 87505

APPLICATION FOR PERMIT TO DRILL, RE-ENTER, DEEPEN, PLUGBACK, OR ADD A ZONE

1. Operator Name and Address PATINA SAN JUAN INCORPORATED 5802 U.S. HIGHWAY 64 FARMINGTON , NM 87402		2. OGRID Number 173252
		3. API Number 30-045-33982
4. Property Code 24060	5. Property Name NANCE	6. Well No. 012

7. Surface Location

UL - Lot	Section	Township	Range	Lot Idn	Feet From	N/S Line	Feet From	E/W Line	County
L	27	31N	13W	L	1995	S	1255	W	SAN JUAN

8. Pool Information

BASIN DAKOTA (PRORATED GAS)	71599
BASIN FRUITLAND COAL (GAS)	71629

Additional Well Information

9. Work Type New Well	10. Well Type GAS	11. Cable/Rotary	12. Lease Type Private	13. Ground Level Elevation 5560
14. Multiple Y	15. Proposed Depth 6660	16. Formation Dakota Formation	17. Contractor	18. Spud Date 10/15/2006
Depth to Ground water 100		Distance from nearest fresh water well > 1000		Distance to nearest surface water 300
Pit: Liner: Synthetic <input checked="" type="checkbox"/> 12 _____ mils thick Clay <input type="checkbox"/> Pit Volume: 7486 _____ bbls Drilling Method: Closed Loop System <input type="checkbox"/> Fresh Water <input checked="" type="checkbox"/> Brine <input type="checkbox"/> Diesel/Oil-based <input type="checkbox"/> Gas/Air <input type="checkbox"/>				

19. Proposed Casing and Cement Program

Type	Hole Size	Casing Type	Casing Weight/ft	Setting Depth	Sacks of Cement	Estimated TOC
Surf	13.5	9.625	36	300	311	0
Int1	8.75	7	23	4650	924	0
Prod	6.25	4.5	11.6	6660	360	4150

Casing/Cement Program: Additional Comments

--

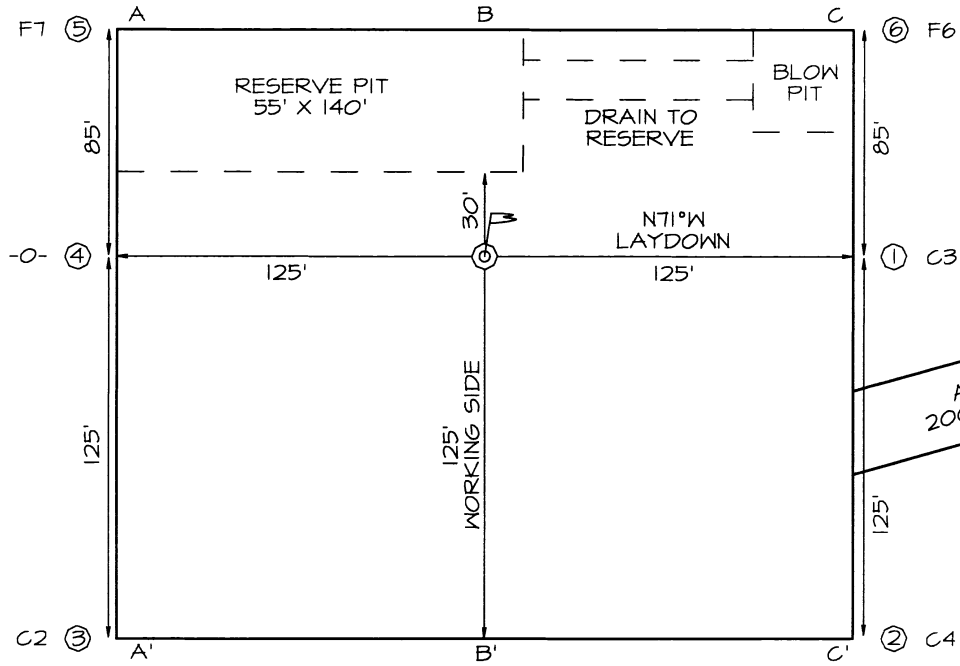
Proposed Blowout Prevention Program

Type	Working Pressure	Test Pressure	Manufacturer
Blind	2000	1000	
Pipe	2000	1000	

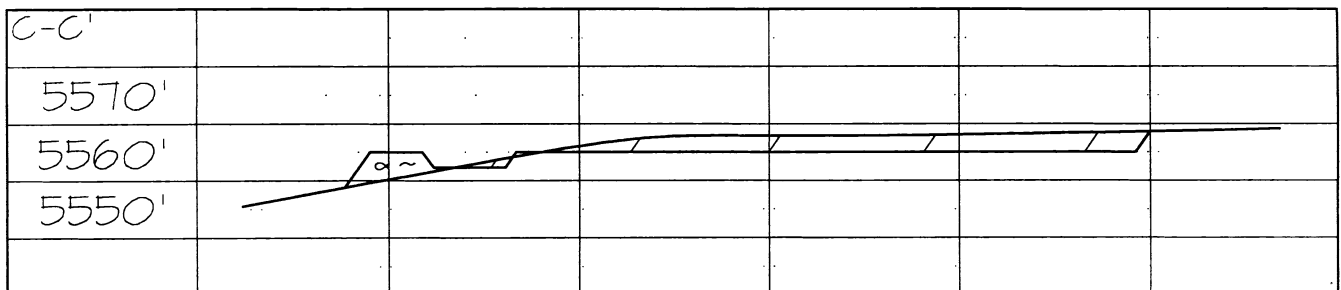
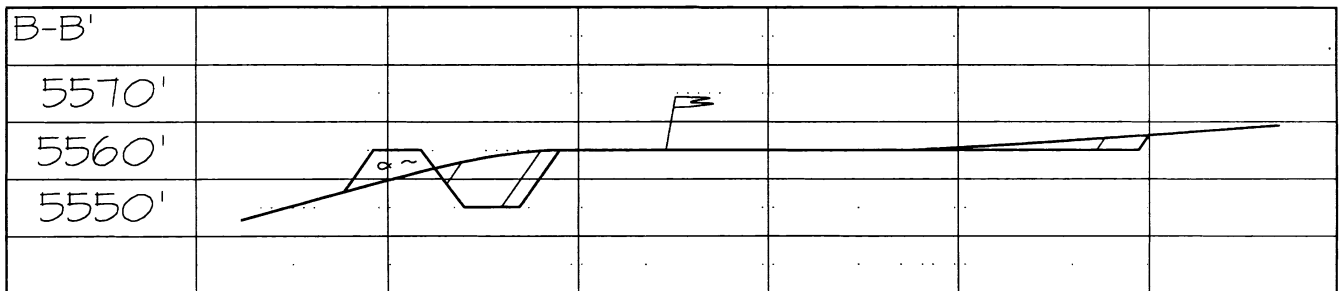
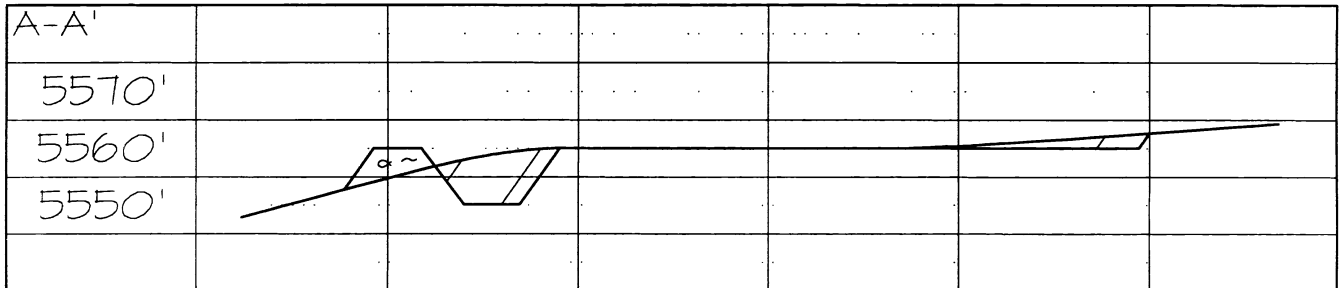
I hereby certify that the information given above is true and complete to the best of my knowledge and belief. I further certify that the drilling pit will be constructed according to NMOCD guidelines <input checked="" type="checkbox"/> a general permit <input type="checkbox"/> or an (attached) alternative OCD-approved plan <input type="checkbox"/> . Printed Name: Electronically filed by Jean Muse Title: Manager Email Address: jmuse@nobleenergyinc.com Date: 10/3/2006 Phone: 505-632-8056	OIL CONSERVATION DIVISION Approved By: Charlie Perin Title: District Supervisor Approved Date: 10/5/2006 Expiration Date: 10/5/2007
--	---

PATINA SAN JUAN, INC. RIO BRAVO 27 #12
1995' FSL & 1255' FWL, SECTION 27, T31N, R13W, NMPM
SAN JUAN COUNTY, NEW MEXICO ELEVATION: 5560'

LATITUDE: 36.86906° N
LONGITUDE: 108.19664° W
 DATUM: NAD1983



TOTAL ACCESS 2000' (0-6%)
 60' New Mexico State Highway Dept
 1940' FEE Surface Owner: Jim North



District I
PO Box 1980, Hobbs, NM 88241-1980

District II
PO Drawer DD, Artesia, NM 88211-0719

District III
1000 Rio Brazos Rd., Aztec, NM 87410

District IV
PO Box 2088, Santa Fe, NM 87504-2088

State of New Mexico
Energy, Minerals & Natural Resources Department

OIL CONSERVATION DIVISION
PO Box 2088
Santa Fe, NM 87504-2088

Form C-102
Revised February 21, 1994

Instructions on back
Submit to Appropriate District Office

State Lease - 4 Copies
Fee Lease - 3 Copies

☐ AMENDED REPORT

WELL LOCATION AND ACREAGE DEDICATION PLAT

¹ API Number	² Pool Code 71599 / 71629	³ Pool Name BASIN DAKOTA / BASIN FRUITLAND COAL
⁴ Property Code	⁵ Property Name RIO BRAVO 27	⁶ Well Number 12
⁷ GRID No. 173252	⁸ Operator Name PATINA SAN JUAN, INC.	⁹ Elevation 5560'

¹⁰ Surface Location

UL or lot no.	Section	Township	Range	Lot Idn	Feet from the	North/South line	Feet from the	East/West line	County
L	27	31N	13W		1995	SOUTH	1255	WEST	SAN JUAN

¹¹ Bottom Hole Location If Different From Surface

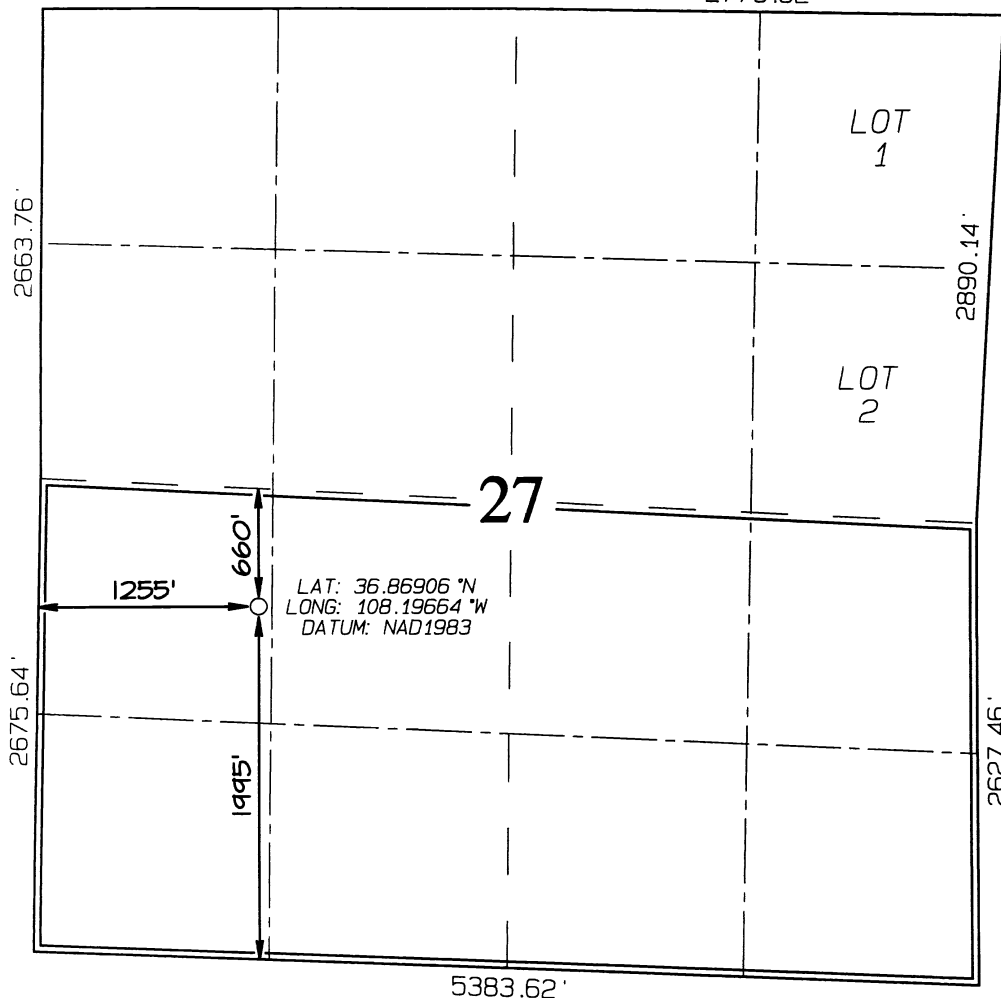
UL or lot no.	Section	Township	Range	Lot Idn	Feet from the	North/South line	Feet from the	East/West line	County

¹² Dedicated Acres 320.0 Acres - (S/2)	¹³ Joint or Infill	¹⁴ Consolidation Code	¹⁵ Order No.
--	-------------------------------	----------------------------------	-------------------------

NO ALLOWABLE WILL BE ASSIGNED TO THIS COMPLETION UNTIL ALL INTERESTS HAVE BEEN CONSOLIDATED
OR A NON-STANDARD UNIT HAS BEEN APPROVED BY THE DIVISION

2693.46'

2776.62'



¹⁷ OPERATOR CERTIFICATION

I hereby certify that the information contained herein is true and complete to the best of my knowledge and belief

Signature

Printed Name

Title

Date

¹⁸ SURVEYOR CERTIFICATION

I hereby certify that the well location shown on this plat was plotted from field notes of actual surveys made by me or under my supervision, and that the same is true and correct to the best of my belief.

Survey Date: FEBRUARY 23, 2006

Signature and Seal of Professional Surveyor



JASON C. EDWARDS

Certificate Number 15269

District I
PO Box 1980, Hobbs, NM 88241-1980

District II
PO Drawer DD, Artesia, NM 88211-0719

District III
1000 Rio Brazos Rd., Aztec, NM 87410

District IV
PO Box 2088, Santa Fe, NM 87504-2088

State of New Mexico
Energy, Minerals & Natural Resources Department

OIL CONSERVATION DIVISION
PO Box 2088
Santa Fe, NM 87504-2088

Form C-102
Revised February 21, 1994

Instructions on back
Submit to Appropriate District Office

State Lease - 4 Copies
Fee Lease - 3 Copies

☐ AMENDED REPORT

WELL LOCATION AND ACREAGE DEDICATION PLAT

¹ API Number	² Pool Code 71599 / 71629	³ Pool Name BASIN DAKOTA / BASIN FRUITLAND COAL
⁴ Property Code	⁵ Property Name RIO BRAVO 27	⁶ Well Number 12
⁷ GRID No. 173252	⁸ Operator Name PATINA SAN JUAN, INC.	⁹ Elevation 5560'

¹⁰ Surface Location

UL or lot no.	Section	Township	Range	Lot Idn	Feet from the	North/South line	Feet from the	East/West line	County
L	27	31N	13W		1995	SOUTH	1255	WEST	SAN JUAN

¹¹ Bottom Hole Location If Different From Surface

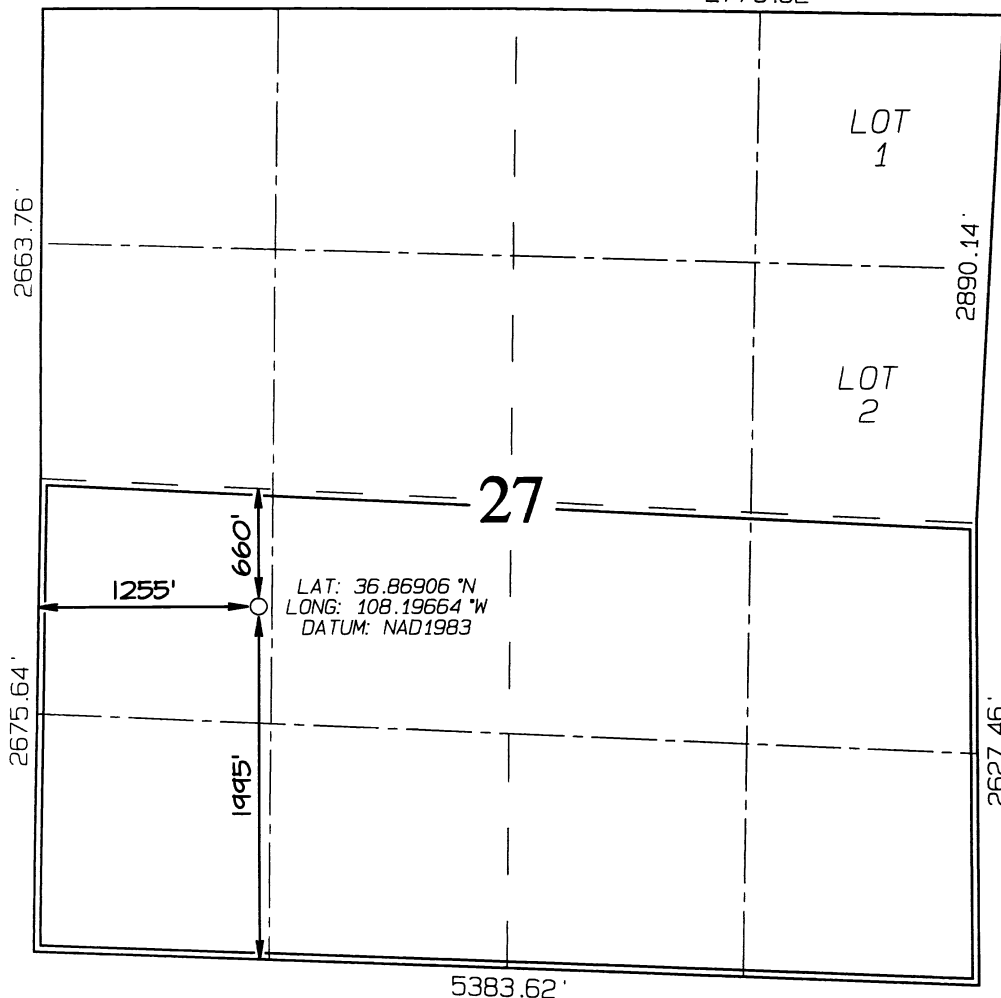
UL or lot no.	Section	Township	Range	Lot Idn	Feet from the	North/South line	Feet from the	East/West line	County

¹² Dedicated Acres 320.0 Acres - (S/2)	¹³ Joint or Infill	¹⁴ Consolidation Code	¹⁵ Order No.
--	-------------------------------	----------------------------------	-------------------------

NO ALLOWABLE WILL BE ASSIGNED TO THIS COMPLETION UNTIL ALL INTERESTS HAVE BEEN CONSOLIDATED
OR A NON-STANDARD UNIT HAS BEEN APPROVED BY THE DIVISION

2693.46'

2776.62'



¹⁷ OPERATOR CERTIFICATION

I hereby certify that the information contained herein is true and complete to the best of my knowledge and belief

Signature

Printed Name

Title

Date

¹⁸ SURVEYOR CERTIFICATION

I hereby certify that the well location shown on this plat was plotted from field notes of actual surveys made by me or under my supervision, and that the same is true and correct to the best of my belief.

Survey Date: FEBRUARY 23, 2006

Signature and Seal of Professional Surveyor



JASON C. EDWARDS

Certificate Number 15269

Permit Comments

Operator: PATINA SAN JUAN INCORPORATED , 173252

Well: NANCE #012

API: 30-045-33982

Created By	Comment	Comment Date
SHAYDEN	Name changed as this well infills the Basin Dakota Nance wells in the S/2 of Section 27.	10/4/2006