

State of New Mexico
Energy, Minerals and Natural Resources
Oil Conservation Division
1220 S. St Francis Dr.
Santa Fe, NM 87505

APPLICATION FOR PERMIT TO DRILL, RE-ENTER, DEEPEN, PLUGBACK, OR ADD A ZONE

1. Operator Name and Address EDGE PETROLEUM OPERATING COMPANY, INC. 1301 TRAVIS, SUITE 2000 HOUSTON , TX 77002		2. OGRID Number 224400
		3. API Number 30-015-35222
4. Property Code 34237	5. Property Name RED LAKE 36 A STATE	6. Well No. 004

7. Surface Location

UL - Lot	Section	Township	Range	Lot Idn	Feet From	N/S Line	Feet From	E/W Line	County
A	36	17S	27E	A	330	N	465	E	EDDY

8. Pool Information

RED LAKE; GLORIETA YESO, NORTHEAST	96836
------------------------------------	-------

Additional Well Information

9. Work Type New Well	10. Well Type OIL	11. Cable/Rotary	12. Lease Type State	13. Ground Level Elevation 3620
14. Multiple N	15. Proposed Depth 3650	16. Formation Yeso Formation	17. Contractor	18. Spud Date 11/15/2006
Depth to Ground water 140		Distance from nearest fresh water well > 1000		Distance to nearest surface water > 1000

Pit: Liner: Synthetic ☒ 12 _____ mils thick Clay ☐ Pit Volume: 20000 _____ bbls Drilling Method:
 Closed Loop System ☐ Fresh Water ☐ Brine ☐ Diesel/Oil-based ☒ Gas/Air ☐

19. Proposed Casing and Cement Program

Type	Hole Size	Casing Type	Casing Weight/ft	Setting Depth	Sacks of Cement	Estimated TOC
Surf	12.25	8.625	24	400	348	0
Prod	7.875	5.5	15.5	3650	518	0

Casing/Cement Program: Additional Comments

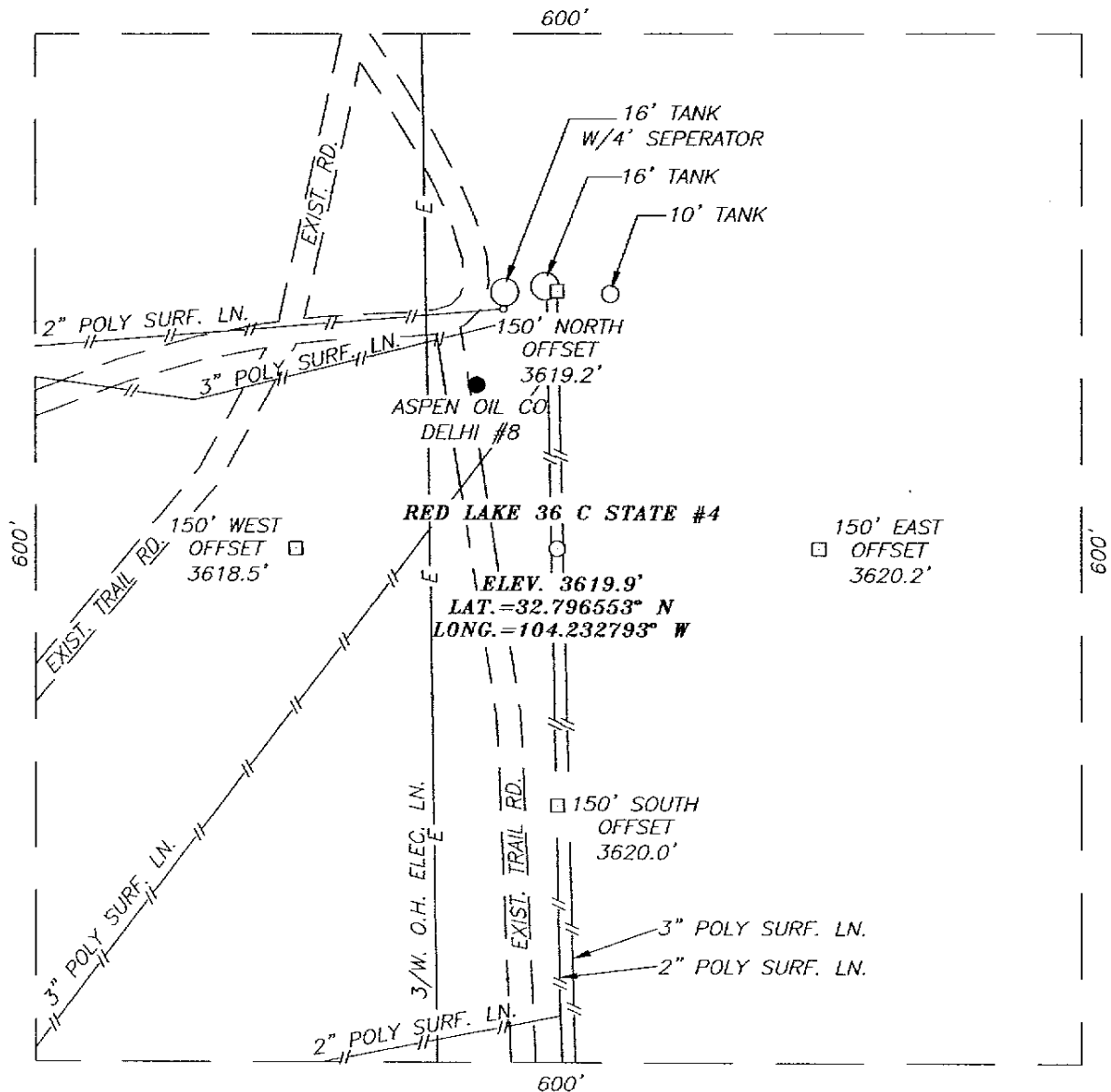
Edge Petroleum Operating Co. proposes to drill a 3650 Yeso 10 acre in field development oil well. The well will be drilled throught the Queen, Grayburg, Premier, San Andres and Yeso. 12-1/4 surface casing will be set and cement circulated at 400. 5-1/2 production casing will be set and cemented at 3610. The mud program consists of 0-550 Bentonite and Lime slurry using Fresh Water; Mud Wt. 8.4-9.4; Viscosity 32-34; Filtrate N/C and 550-3800 Cut Brine, Mud Wt. 9.0-9.4, Viscosity 28, Filtrate N/C. The well will be perforated in the Yeso and stimulated as needed for production. Well to produce on rod pump.

Proposed Blowout Prevention Program

Type	Working Pressure	Test Pressure	Manufacturer
Annular	2000	2000	Regan

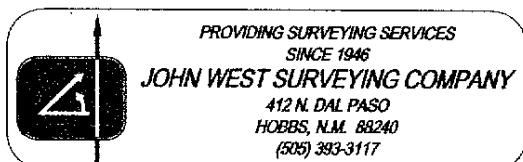
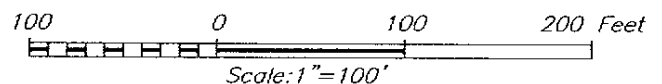
I hereby certify that the information given above is true and complete to the best of my knowledge and belief. I further certify that the drilling pit will be constructed according to NMOCD guidelines <input checked="" type="checkbox"/> a general permit <input type="checkbox"/> , or an (attached) alternative OCD-approved plan <input type="checkbox"/> .	OIL CONSERVATION DIVISION	
Printed Name: Electronically filed by Amanda Simmons	Approved By: Bryan Arrant	
Title: Sr. Production Assistant	Title: Geologist	
Email Address: asimmons@edgepet.com	Approved Date: 11/2/2006	Expiration Date: 11/2/2007
Date: 11/1/2006	Phone: 713-427-8842	

SECTION 36, TOWNSHIP 17 SOUTH, RANGE 27 EAST, N.M.P.M.,
 EDDY COUNTY, NEW MEXICO



DIRECTIONS TO LOCATION

FROM THE INTERSECTION OF U.S. HWY. #82 AND CO. RD. #204 (HILLTOP RD.), GO SOUTHEAST ON CO. RD. #204 APPROX. 1.1 MILES. THIS LOCATION IS APPROX. 400 FEET WEST.



EDGE PETROLEUM OPERATING COMPANY, INC.

RED LAKE 36 C STATE #4
 LOCATED 430 FEET FROM THE NORTH LINE
 AND 2310 FEET FROM THE WEST LINE OF SECTION 36,
 TOWNSHIP 17 SOUTH, RANGE 27 EAST, N.M.P.M.,
 EDDY COUNTY, NEW MEXICO.

Survey Date: 08/29/06	Sheet 1 of 1 Sheets
W.O. Number: 06.11.1377	Dr By: M.R. Rev 1: N/A
Date: 09/07/06	Disk: CD#6 06111377 Scale: 1"=100'

OCT-23-2006 16:10

EDGE

7136506493 P.01/01

DISTRICT I

1025 N. FRENCH DR., HOBBS, NM 88240

DISTRICT II

1301 W. GRAND AVENUE, ARTESIA, NM 88210

DISTRICT III

1000 Rio Brases Rd., Aztec, NM 87410

DISTRICT IV

1220 S. ST. FRANCIS DR., SANTA FE, NM 87505

State of New Mexico
Energy, Minerals and Natural Resources DepartmentOIL CONSERVATION DIVISION
1220 SOUTH ST. FRANCIS DR.
Santa Fe, New Mexico 87505Form C-102
Revised October 12, 2005
Submit to Appropriate District Office
State Lease - 4 Copies
Fee Lease - 3 Copies

WELL LOCATION AND ACREAGE DEDICATION PLAT

☐ AMENDED REPORT

API Number	Pool Code 96836	Pool Name RED LAKE; GLORIETTA-YESO, NORTHEAST
Property Code 34237	Property Name RED LAKE 36 A STATE	Well Number 4
OCRID No. 224400	Operator Name EDGE PETROLEUM OPERATING COMPANY, INC.	Elevation 3611'

Surface Location

UL or lot No.	Section	Township	Range	Lot Idn	Feet from the	North/South line	Feet from the	East/West line	County
A	36	17-S	27-E		330	NORTH	465	EAST	EDDY

Bottom Hole Location If Different From Surface

UL or lot No.	Section	Township	Range	Lot Idn	Feet from the	North/South line	Feet from the	East/West line	County

Dedicated Acres	Joint or Infill	Consolidation Code	Order No.
40.0			

NO ALLOWABLE WILL BE ASSIGNED TO THIS COMPLETION UNTIL ALL INTERESTS HAVE BEEN CONSOLIDATED
OR A NON-STANDARD UNIT HAS BEEN APPROVED BY THE DIVISION

<p>GEODETIC COORDINATES NAD 27 NME</p> <p>Y=653593.8 N X=533416.4 E</p> <p>LAT.=32.796772° N LONG.=104.224586° W</p>	OPERATOR CERTIFICATION I hereby certify that the information herein is true and complete to the best of my knowledge and belief, and that this organization either owns a working interest or unleased mineral interest in the land including the proposed bottom hole location or has a right to drill this well at this location pursuant to a contract with an owner of such mineral or working interest, or to a voluntary pooling agreement or a compulsory pooling order heretofore entered by the division.	
	Signature: <i>Amanda Simmons</i> Date: _____ AMANDA SIMMONS 10-23-06 Printed Name	
	SURVEYOR CERTIFICATION I hereby certify that the well location shown on this plat was plotted from field notes of actual surveys made by me or under my supervision, and that the same is true and correct to the best of my belief.	
	AUGUST 29, 2006 Date Surveyed: _____ MR Signature: <i>GARY EIDSON</i> Professional Surveyor Certificate No. GARY EIDSON 12641	

TOTAL P.01

TOTAL P.01

Permit Comments

Operator: EDGE PETROLEUM OPERATING COMPANY, INC. , 224400

Well: RED LAKE 36 A STATE #004

API: 30-015-35222

Created By	Comment	Comment Date
BArrant	Please see e mail dated 10/24/2006.	10/24/2006
ASIMMONS	I am emailing the contingency plan to Bryan Arrant.	11/1/2006