

State of New Mexico
Energy, Minerals and Natural Resources
Oil Conservation Division
1220 S. St Francis Dr.
Santa Fe, NM 87505

APPLICATION FOR PERMIT TO DRILL, RE-ENTER, DEEPEN, PLUGBACK, OR ADD A ZONE

1. Operator Name and Address CONOCOPHILLIPS COMPANY 3401 E. 30TH STREET FARMINGTON , NM 87402		2. OGRID Number 217817
		3. API Number 30-045-34071
4. Property Code 31329	5. Property Name SAN JUAN 32 7 UNIT	6. Well No. 037F

7. Surface Location

UL - Lot	Section	Township	Range	Lot Idn	Feet From	N/S Line	Feet From	E/W Line	County
O	8	32N	07W	O	660	S	1785	E	SAN JUAN

8. Pool Information

BASIN DAKOTA (PRORATED GAS)	71599
BLANCO-MESAVERDE (PRORATED GAS)	72319

Additional Well Information

9. Work Type New Well	10. Well Type GAS	11. Cable/Rotary	12. Lease Type Private	13. Ground Level Elevation 6495
14. Multiple Y	15. Proposed Depth 8050	16. Formation Dakota Formation	17. Contractor	18. Spud Date
Depth to Ground water 100		Distance from nearest fresh water well > 1000		Distance to nearest surface water > 1000
Pit: Liner: Synthetic <input checked="" type="checkbox"/> 12 _____ mils thick Clay <input type="checkbox"/> Pit Volume: 4400 _____ bbls Drilling Method: Closed Loop System <input type="checkbox"/> Fresh Water <input checked="" type="checkbox"/> Brine <input type="checkbox"/> Diesel/Oil-based <input type="checkbox"/> Gas/Air <input type="checkbox"/>				

19. Proposed Casing and Cement Program

Type	Hole Size	Casing Type	Casing Weight/ft	Setting Depth	Sacks of Cement	Estimated TOC
Surf	12.25	9.625	32.3	120	88	0
Int1	8.75	7	20	3636	414	0
Prod	6.25	4.5	10.5	8050	289	3536

Casing/Cement Program: Additional Comments

If the 9 5/8" surface casing is preset drilled (MOTE) will cement w/75 sx Type I-II cement w/20% Flyash mixed @ 1.61 cf/sx. Will bring cement to surface. Wait on cement for 24 hours for pre-set hole before pressure testing or drilling out. If H&P rig is used to drill the well will use 13 1/2" surface hole then will adjust cement to insure cement reaches surface.

Proposed Blowout Prevention Program

Type	Working Pressure	Test Pressure	Manufacturer
DoubleRam	2000	2000	Schaffer

I hereby certify that the information given above is true and complete to the best of my knowledge and belief. I further certify that the drilling pit will be constructed according to NMOCD guidelines <input type="checkbox"/> a general permit <input checked="" type="checkbox"/> or an (attached) alternative OCD-approved plan <input type="checkbox"/> . Printed Name: Electronically filed by Juanita Farrell Title: Regulatory Specialist Email Address: juanita.r.farrell@conocophillips.com Date: 11/16/2006 Phone: 505-599-3419	OIL CONSERVATION DIVISION	
	Approved By: Charlie Perrin	
	Title: District Supervisor	
	Approved Date: 12/6/2006	Expiration Date: 12/6/2007

District I
PO Box 1980, Hobbs, NM 88241-1980

District II
PO Drawer 00, Artesia, NM 88211-0719

District III
1000 Rio Brazos Rd., Aztec, NM 87410

District IV
PO Box 2088, Santa Fe, NM 87504-2088

State of New Mexico
Energy, Minerals & Natural Resources Department

OIL CONSERVATION DIVISION
PO Box 2088
Santa Fe, NM 87504-2088

Form C-102
Revised February 21, 1994
Instructions on back
Submit to Appropriate District Office
State Lease - 4 Copies
Fee Lease - 3 Copies

☐ AMENDED REPORT

WELL LOCATION AND ACREAGE DEDICATION PLAT

*API Number 30-045-		*Pool Code 72319 / 71599		*Pool Name BLANCO MESAVERDE / BASIN DAKOTA	
*Property Code 31329		*Property Name SAN JUAN 32-7 UNIT			*Well Number 37F
*OGRID No 217817		*Operator Name CONOCOPHILLIPS COMPANY			*Elevation 6495'

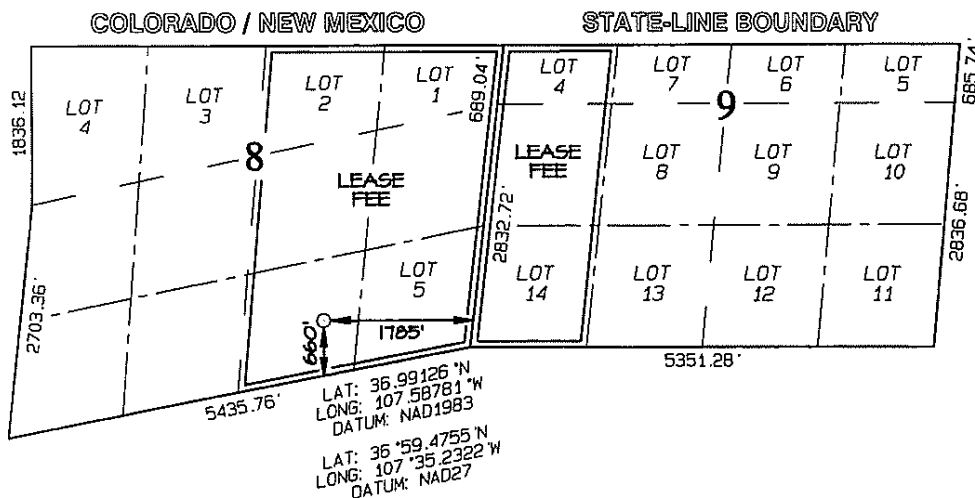
10 Surface Location

UL or lot no.	Section	Township	Range	Lot Idn	Feet from the	North/South line	Feet from the	East/West line	County
0	8	32N	7W		660	SOUTH	1785	EAST	SAN JUAN

11 Bottom Hole Location If Different From Surface

UL or lot no.	Section	Township	Range	Lot Idn	Feet from the	North/South line	Feet from the	East/West line	County
12 Dedicated Acres 303.66 Acres E/2 Section 8 & W/2 W/2 Section 9					13 Joint or Infill	14 Consolidation Code	15 Order No. R-1066-NSP		

NO ALLOWABLE WILL BE ASSIGNED TO THIS COMPLETION UNTIL ALL INTERESTS HAVE BEEN CONSOLIDATED OR A NON-STANDARD UNIT HAS BEEN APPROVED BY THE DIVISION



17 OPERATOR CERTIFICATION

I hereby certify that the information contained herein is true and complete to the best of my knowledge and belief

Juanita Farrell

Signature

Juanita Farrell

Printed Name

Regulatory Specialist

Title

10-20-06

Date

18 SURVEYOR CERTIFICATION

I hereby certify that the well location shown on this plat was plotted from field notes of actual surveys made by me or under my supervision, and that the same is true and correct to the best of my belief

Date of Survey: JUNE 30, 2005

Signature and Seal of Professional Surveyor



JASON C. EDWARDS
Certificate Number 15269

District I
 1625 N. French Dr., Hobbs, NM 88240
 Phone:(505) 393-6161 Fax:(505) 393-0720

District II
 1301 W. Grand Ave., Artesia, NM 88210
 Phone:(505) 748-1283 Fax:(505) 748-9720

District III
 1000 Rio Brazos Rd., Aztec, NM 87410
 Phone:(505) 334-6178 Fax:(505) 334-6170

District IV
 1220 S. St Francis Dr., Santa Fe, NM 87505
 Phone:(505) 476-3470 Fax:(505) 476-3462

State of New Mexico
Energy, Minerals and Natural Resources
Oil Conservation Division
1220 S. St Francis Dr.
Santa Fe, NM 87505

Form C-102
 Permit 40119

WELL LOCATION AND ACREAGE DEDICATION PLAT

1. API Number 30-045-34071	2. Pool Code 72319	3. Pool Name BLANCO-MESAVERDE (PRORATED GAS)
4. Property Code 31329	5. Property Name SAN JUAN 32 7 UNIT	6. Well No. 037F
7. OGRID No. 217817	8. Operator Name CONOCOPHILLIPS COMPANY	9. Elevation 6495

10. Surface Location

UL - Lot	Section	Township	Range	Lot Idn	Feet From	N/S Line	Feet From	E/W Line	County
○	8	32N	07W		660	S	1785	E	SAN JUAN

11. Bottom Hole Location If Different From Surface

UL - Lot	Section	Township	Range	Lot Idn	Feet From	N/S Line	Feet From	E/W Line	County
12. Dedicated Acres 303.66		13. Joint or Infill		14. Consolidation Code			15. Order No.		

NO ALLOWABLE WILL BE ASSIGNED TO THIS COMPLETION UNTIL ALL INTERESTS HAVE BEEN CONSOLIDATED OR A NON-STANDARD UNIT HAS BEEN APPROVED BY THE DIVISION

<div style="text-align: center; border-bottom: 1px solid black; margin-bottom: 10px;"> OPERATOR CERTIFICATION </div> <p><i>I hereby certify that the information contained herein is true and complete to the best of my knowledge and belief, and that this organization either owns a working interest or unleased mineral interest in the land including the proposed bottom hole location(s) or has a right to drill this well at this location pursuant to a contract with an owner of such a mineral or working interest, or to a voluntary pooling agreement or a compulsory pooling order heretofore entered by the division.</i></p> <p>E-Signed By: Juanita Farrell Title: Regulatory Specialist Date: 11/16/2006</p>	<div style="text-align: center; border-bottom: 1px solid black; margin-bottom: 10px;"> SURVEYOR CERTIFICATION </div> <p><i>I hereby certify that the well location shown on this plat was plotted from field notes of actual surveys made by me or under my supervision, and that the same is true and correct to the best of my belief.</i></p> <p>Surveyed By: JASON EDWARDS Date of Survey: 6/30/2005 Certificate Number: 15269</p>
--	---

Permit Comments

Operator: CONOCOPHILLIPS COMPANY , 217817

Well: SAN JUAN 32 7 UNIT #037F

API: 30-045-34071

Created By	Comment	Comment Date
JRFARRE	See attach plat. This well is covered under R-1066 due to NSP. Conocophillips will file pit application after APD is approved.	10/20/2006
JRFARRE	If the 9 5/8" surface casing is preset drilled (MOT) will cement w/75 sx Type I-II cement w/20% Flyash mixed @ 1.61 cf/sx. Will bring cement to surface. Wait on cement for 24 hours for pre-set hole before pressure testing or drilling out. If H&P rig is used to drill the well will use 13 1/2" surface hole then will adjust cement to insure cement reaches surface.	11/16/2006
SHAYDEN	R-1066, block M only covers BLANCO Mesaverde. Basin Dakota NSP is from R-2046, Tract C	11/27/2006