

**State of New Mexico**  
**Energy, Minerals and Natural Resources**  
**Oil Conservation Division**  
**1220 S. St Francis Dr.**  
**Santa Fe, NM 87505**

**APPLICATION FOR PERMIT TO DRILL, RE-ENTER, DEEPEN, PLUGBACK, OR ADD A ZONE**

1. Operator Name and Address WILLIAMS PRODUCTION COMPANY, LLC ONE WILLIAMS CENTER TULSA , OK 74101		2. OGRID Number 120782
		3. API Number 30-039-30196
4. Property Code 17212	5. Property Name ROSA UNIT COM	6. Well No. 148C

**7. Surface Location**

UL - Lot	Section	Township	Range	Lot Idn	Feet From	N/S Line	Feet From	E/W Line	County
N	2	31N	06W	N	840	S	1465	W	RIO ARRIBA

**8. Pool Information**

BLANCO-MESAVERDE (PRORATED GAS)	72319
---------------------------------	-------

**Additional Well Information**

9. Work Type New Well	10. Well Type GAS	11. Cable/Rotary	12. Lease Type State	13. Ground Level Elevation 6250
14. Multiple N	15. Proposed Depth 6250	16. Formation Mesa Verde Group	17. Contractor	18. Spud Date 4/1/2007
Depth to Ground water 250		Distance from nearest fresh water well > 1000		Distance to nearest surface water 750

Pit: Liner: Synthetic ☒ 12 \_\_\_\_\_ miles thick Clay ☐ Pit Volume: 12000 \_\_\_\_\_ bbls Drilling Method:  
 Closed Loop System ☐ Fresh Water ☒ Brine ☐ Diesel/Oil-based ☐ Gas/Air ☐

**19. Proposed Casing and Cement Program**

Type	Hole Size	Casing Type	Casing Weight/ft	Setting Depth	Sacks of Cement	Estimated TOC
Surf	12.25	9.625	36	300	150	
Int1	8.75	7	20	3996	560	
Prod	6.25	4.5	10.5	6250	155	3896

**Casing/Cement Program: Additional Comments**

--

**Proposed Blowout Prevention Program**

Type	Working Pressure	Test Pressure	Manufacturer
DoubleRam	2000	4000	

I hereby certify that the information given above is true and complete to the best of my knowledge and belief. I further certify that the drilling pit will be constructed according to NMOCD guidelines <input checked="" type="checkbox"/> a general permit <input type="checkbox"/> , or an (attached) alternative OCD-approved plan <input type="checkbox"/> . Printed Name: Electronically filed by Mike Turnbaugh Title: E & P District Manager Email Address: mike.turnbaugh@williams.com Date: 2/8/2007	<b>OIL CONSERVATION DIVISION</b>  Approved By: Charlie Perin Title: District Supervisor Approved Date: 2/14/2007   Expiration Date: 2/14/2008  Conditions of Approval Attached
Phone: 918-573-6180	

District I  
PO Box 1980, Hobbs, NM 88241-1980

District II  
PO Drawer 00, Artesia, NM 88211-0719

District III  
1000 Rio Brazos Rd., Aztec, NM 87410

District IV  
PO Box 2088, Santa Fe, NM 87504-2088

State of New Mexico  
Energy, Minerals & Natural Resources Department

OIL CONSERVATION DIVISION  
PO Box 2088  
Santa Fe, NM 87504-2088

Form C-102  
Revised February 21, 1994  
Instructions on back  
Submit to Appropriate District Office  
State Lease - 4 Copies  
Fee Lease - 3 Copies

☐ AMENDED REPORT

WELL LOCATION AND ACREAGE DEDICATION PLAT

*API Number		*Pool Code 72319	*Pool Name BLANCO MESAVERDE
*Property Code 17033	*Property Name ROSA UNIT COM		*Well Number 148C
*GRID No. 120782	*Operator Name WILLIAMS PRODUCTION COMPANY		*Elevation 6250'

<sup>10</sup> Surface Location

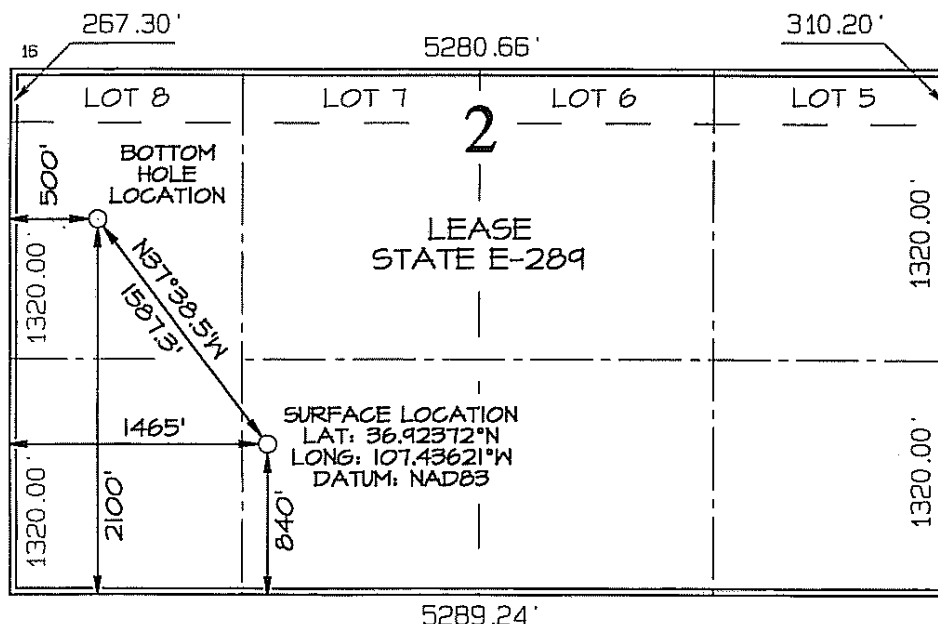
UL or lot no.	Section	Township	Range	Lot Idn	Feet from the	North/South line	Feet from the	East/West line	County
N	2	31N	6W		840	SOUTH	1465	WEST	RIO ARriba

<sup>11</sup> Bottom Hole Location If Different From Surface

UL or lot no.	Section	Township	Range	Lot Idn	Feet from the	North/South line	Feet from the	East/West line	County
L	2	31N	6W		2100	SOUTH	500	WEST	RIO ARriba

<sup>12</sup> Dedicated Acres 356.26 Acres - Entire Section	<sup>13</sup> Joint or Infill	<sup>14</sup> Consolidation Code	<sup>15</sup> Order No.
----------------------------------------------------------------	-------------------------------	----------------------------------	-------------------------

NO ALLOWABLE WILL BE ASSIGNED TO THIS COMPLETION UNTIL ALL INTERESTS HAVE BEEN CONSOLIDATED OR A NON-STANDARD UNIT HAS BEEN APPROVED BY THE DIVISION



**FINAL**  
10-20-06 LdH

<sup>17</sup> OPERATOR CERTIFICATION

I hereby certify that the information contained herein is true and complete to the best of my knowledge and belief

*Gregory Higgins*  
Signature

Gregory Higgins  
Printed Name

DRILLING COM  
Title

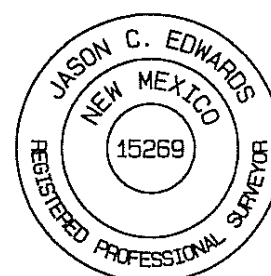
2-7-07  
Date

<sup>18</sup> SURVEYOR CERTIFICATION

I hereby certify that the well location shown on this plat was plotted from field notes of actual surveys made by me or under my supervision, and that the same is true and correct to the best of my belief.

Date of Survey: APRIL 26, 2006

Signature and Seal of Professional Surveyor



*Jason C. Edwards*  
Certificate Number 15269

# Permit Conditions of Approval

Operator: WILLIAMS PRODUCTION COMPANY, LLC , 120782

Well: ROSA UNIT COM #148C

API: 30-039-30196

OCD Reviewer	Condition
CPerrin	Will require a directional survey with the C-104