

**State of New Mexico**  
**Energy, Minerals and Natural Resources**  
**Oil Conservation Division**  
**1220 S. St Francis Dr.**  
**Santa Fe, NM 87505**

**APPLICATION FOR PERMIT TO DRILL, RE-ENTER, DEEPEN, PLUGBACK, OR ADD A ZONE**

1. Operator Name and Address XTO ENERGY, INC 2700 FARMINGTON AVENUE FARMINGTON , NM 87401		2. OGRID Number 5380
		3. API Number 30-045-34290
4. Property Code 22816	5. Property Name SNYDER GAS COM B	6. Well No. 001N

**7. Surface Location**

UL - Lot	Section	Township	Range	Lot Idn	Feet From	N/S Line	Feet From	E/W Line	County
K	19	29N	09W	K	1980	S	1125	W	SAN JUAN

**8. Pool Information**

BLANCO-MESAVERDE (PRORATED GAS)	72319
BASIN DAKOTA (PRORATED GAS)	71599

**Additional Well Information**

9. Work Type New Well	10. Well Type GAS	11. Cable/Rotary	12. Lease Type Private	13. Ground Level Elevation 5547
14. Multiple Y	15. Proposed Depth 6830	16. Formation Dakota Formation	17. Contractor	18. Spud Date
Depth to Ground water 50		Distance from nearest fresh water well > 1000		Distance to nearest surface water 125
Pit: Liner: Synthetic <input checked="" type="checkbox"/> 12 miles thick Clay <input type="checkbox"/> Pit Volume: 8000 bbls Drilling Method: Closed Loop System <input type="checkbox"/> Fresh Water <input type="checkbox"/> Brine <input type="checkbox"/> Diesel/Oil-based <input type="checkbox"/> Gas/Air <input type="checkbox"/>				

**19. Proposed Casing and Cement Program**

Type	Hole Size	Casing Type	Casing Weight/ft	Setting Depth	Sacks of Cement	Estimated TOC
Surf	12.25	8.625	24	360	214	0
Prod	7.875	5.5	15.5	4200	350	
Prod	7.875	5.5	15.5	4200	100	
Prod	7.875	5.5	15.5	6830	202	
Prod	7.875	5.5	15.5	6830	150	

**Casing/Cement Program: Additional Comments**

This is a 2 stage cement job setting a DV tool @ 4200'. The plan is to circulate cement to surface on both casing strings.

**Proposed Blowout Prevention Program**

Type	Working Pressure	Test Pressure	Manufacturer
DoubleRam	2000	4000	

I hereby certify that the information given above is true and complete to the best of my knowledge and belief. I further certify that the drilling pit will be constructed according to NMOCD guidelines <input checked="" type="checkbox"/> a general permit <input type="checkbox"/> or an (attached) alternative OCD-approved plan <input type="checkbox"/> .	<b>OIL CONSERVATION DIVISION</b>
Printed Name: Electronically filed by Cheryl Moore	Approved By: Charlie Perrin
Title: Regulatory Analyst	Title: District Supervisor
Email Address: Cheryl_moore@xtoenergy.com	Approved Date: 5/7/2007   Expiration Date: 5/7/2008
Date: 4/30/2007   Phone: 505-564-6706	Conditions of Approval Attached

DISTRICT I  
1625 N. French Dr., Hobbs, N.M. 88240

DISTRICT II  
1301 W. Grand Ave., Artesia, N.M. 88210

DISTRICT III  
1000 Rio Brazos Rd., Aztec, N.M. 87410

DISTRICT IV  
1220 South St. Francis Dr., Santa Fe, NM 87505

State of New Mexico  
Energy, Minerals & Natural Resources Department  
OIL CONSERVATION DIVISION  
1220 South St. Francis Dr.  
Santa Fe, NM 87505

Form C-102

Revised October 12, 2005

Submit to Appropriate District Office

State Lease - 4 Copies

Fee Lease - 3 Copies

☐ AMENDED REPORT

WELL LOCATION AND ACREAGE DEDICATION PLAT

<sup>1</sup> API Number	<sup>2</sup> Pool Code 72319	<sup>3</sup> Pool Name BLANCO MESAVERDE
<sup>4</sup> Property Code	<sup>5</sup> Property Name SNYDER GAS COM B	<sup>6</sup> Well Number 1N
<sup>7</sup> GRID No. 5380	<sup>8</sup> Operator Name XTO ENERGY INC.	<sup>9</sup> Elevation 5547

<sup>10</sup> Surface Location

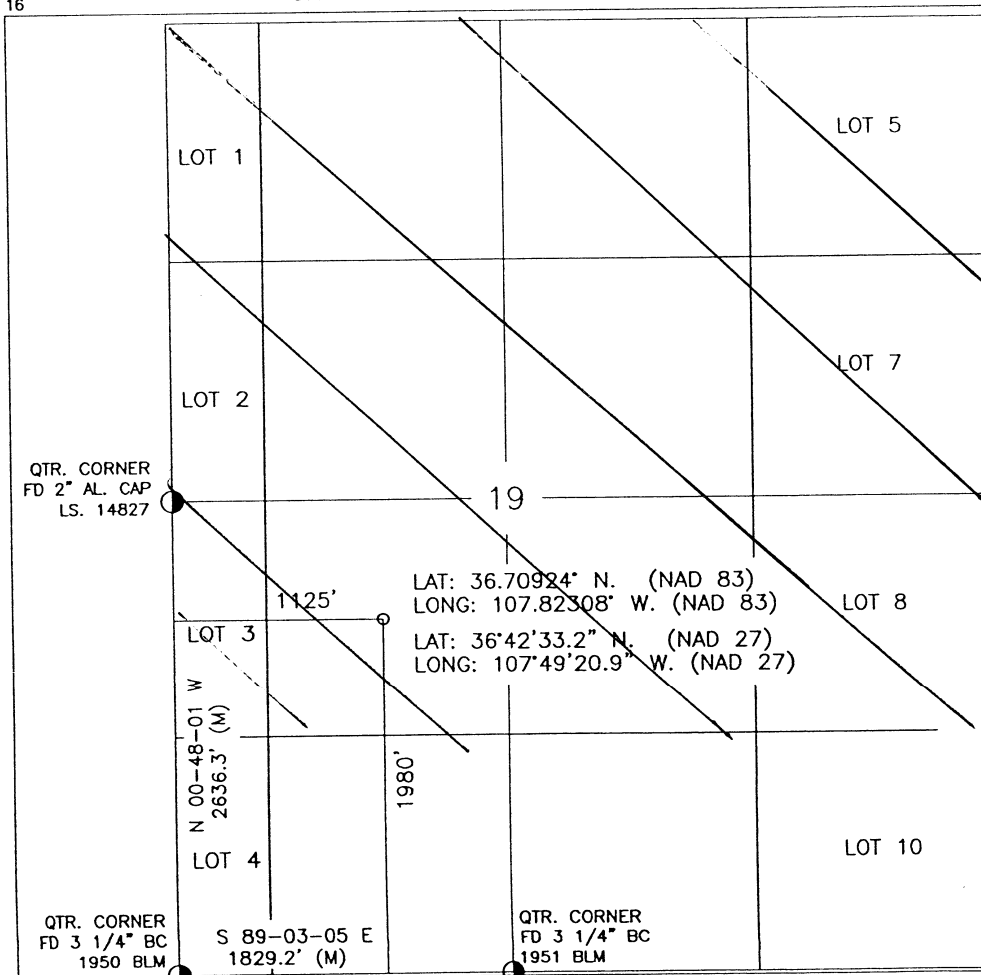
UL or lot no.	Section	Township	Range	Lot Idn	Feet from the	North/South line	Feet from the	East/West line	County
K	19	29-N	9-W		1980	SOUTH	1125	WEST	SAN JUAN

<sup>11</sup> Bottom Hole Location If Different From Surface

UL or lot no.	Section	Township	Range	Lot Idn	Feet from the	North/South line	Feet from the	East/West line	County
<sup>12</sup> Dedicated Acres 409.24 N/2 + N/2 S/2		<sup>13</sup> Joint or Infill		<sup>14</sup> Consolidation Code		<sup>15</sup> Order No.			

NO ALLOWABLE WILL BE ASSIGNED TO THIS COMPLETION UNTIL ALL INTERESTS HAVE BEEN CONSOLIDATED  
OR A NON-STANDARD UNIT HAS BEEN APPROVED BY THE DIVISION

16



17 OPERATOR CERTIFICATION

I hereby certify that the information contained herein is true and complete to the best of my knowledge and belief, and that this organization either owns a working interest or unleased mineral interest in the land including the proposed bottom hole location or has a right to drill this well at this location pursuant to a contract with an owner of such a mineral or working interest, or to a voluntary pooling agreement or a compulsory pooling order heretofore entered by the division.

*Kyla Vaughan* 4/23/07  
Signature Date  
Regulatory Compliance  
Title

18 SURVEYOR CERTIFICATION

I hereby certify that the well location shown on this plat was plotted from field notes of actual surveys made by me or under my supervision, and that the same is true and correct to the best of my belief.

APRIL 2, 2007  
Date of Survey

Signature and Seal of Professional Surveyor:

*[Signature]*  
ROY A. RUSH  
PROFESSIONAL LAND SURVEYOR  
4-1000-01

Certificate Number

DISTRICT I  
1625 N. French Dr., Hobbs, N.M. 88240

DISTRICT II  
1301 W. Grand Ave., Artesia, N.M. 88210

DISTRICT III  
1000 Rio Brazos Rd., Aztec, N.M. 87410

DISTRICT IV  
1220 South St. Francis Dr., Santa Fe, NM 87505

State of New Mexico  
Energy, Minerals & Natural Resources Department  
OIL CONSERVATION DIVISION  
1220 South St. Francis Dr.  
Santa Fe, NM 87505

Form C-102  
Revised October 12, 2005  
Submit to Appropriate District Office  
State Lease - 4 Copies  
Fee Lease - 3 Copies

☐ AMENDED REPORT

WELL LOCATION AND ACREAGE DEDICATION PLAT

<sup>1</sup> API Number	<sup>2</sup> Pool Code 71599	<sup>3</sup> Pool Name BASIN DAKOTA
<sup>4</sup> Property Code	<sup>5</sup> Property Name SNYDER GAS COM B	<sup>6</sup> Well Number 1N
<sup>7</sup> GRID No. 5380	<sup>8</sup> Operator Name XTO ENERGY INC.	<sup>9</sup> Elevation 5547

<sup>10</sup> Surface Location

UL or lot no.	Section	Township	Range	Lot ldn	Feet from the	North/South line	Feet from the	East/West line	County
K	19	29-N	9-W		1980	SOUTH	1125	WEST	SAN JUAN

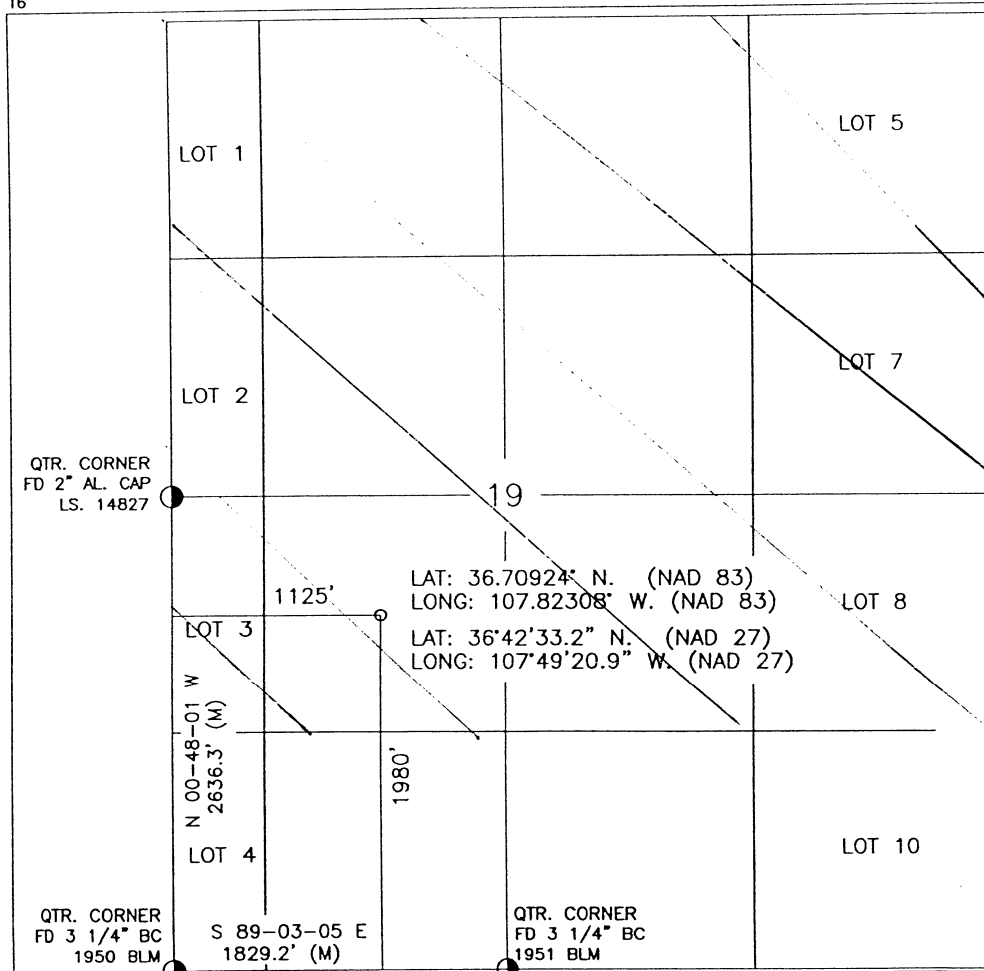
<sup>11</sup> Bottom Hole Location If Different From Surface

UL or lot no.	Section	Township	Range	Lot ldn	Feet from the	North/South line	Feet from the	East/West line	County

<sup>12</sup> Dedicated Acres 409.24 $\frac{5}{2} + \frac{5}{2} \frac{1}{2}$	<sup>13</sup> Joint or Infill	<sup>14</sup> Consolidation Code	<sup>15</sup> Order No.
---	-------------------------------	----------------------------------	-------------------------

NO ALLOWABLE WILL BE ASSIGNED TO THIS COMPLETION UNTIL ALL INTERESTS HAVE BEEN CONSOLIDATED  
OR A NON-STANDARD UNIT HAS BEEN APPROVED BY THE DIVISION

16



17 OPERATOR CERTIFICATION

I hereby certify that the information contained herein is true and complete to the best of my knowledge and belief, and that this organization either owns a working interest or unleased mineral interest in the land including the proposed bottom hole location or has a right to drill this well at this location pursuant to a contract with an owner of such a mineral or working interest, or to a voluntary pooling agreement or a compulsory pooling order heretofore entered by the division.

*Kyle Vaughan* 4/23/07  
Signature Date  
Regulatory Compliance  
Title

18 SURVEYOR CERTIFICATION

I hereby certify that the well location shown on this plat was plotted from field notes of actual surveys made by me or under my supervision, and that the same is true and correct to the best of my belief.

APRIL 2, 2007  
Date of Survey  
Signature and Seal of Professional Surveyor:  
*Roy A. Rush*  
4-23-07  
PROFESSIONAL LAND SURVEYOR  
Certificate Number

## Permit Comments

Operator: XTO ENERGY, INC , 5380

Well: SNYDER GAS COM B #001N

API: 30-045-34290

Created By	Comment	Comment Date
KDVAUGHAN	Steve, I deleted and started over for this APD. It tells me that I have uploaded both C102's. I will send them to you by email also.	4/30/2007
SHAYDEN	MV NSP is R-1097 DK NSP is R-2046	5/1/2007

# Permit Conditions of Approval

Operator: XTO ENERGY, INC , 5380

Well: SNYDER GAS COM B #001N

API: 30-045-34290

OCD Reviewer	Condition
SHAYDEN	Spacing rule violation. Operator must follow up with Change of Status notification on other well to be shut in or abandoned
SHAYDEN	Change in Status to either Snyder Gas Com B #1M or Snyder Gas Com #1 is needed prior to producing this well. Both are active wells in UL F
SHAYDEN	Well site is in vulnerable area. OCD guidelines for pit closure in this type of area are in effect.