

**State of New Mexico**  
**Energy, Minerals and Natural Resources**  
**Oil Conservation Division**  
**1220 S. St Francis Dr.**  
**Santa Fe, NM 87505**

**APPLICATION FOR PERMIT TO DRILL, RE-ENTER, DEEPEN, PLUGBACK, OR ADD A ZONE**

1. Operator Name and Address CONOCOPHILLIPS COMPANY 3401 E. 30TH STREET FARMINGTON , NM 87402		2. OGRID Number 217817
		3. API Number 30-025-38914
4. Property Code 31471	5. Property Name STATE F 1	6. Well No. 025

**7. Surface Location**

UL - Lot	Section	Township	Range	Lot Idn	Feet From	N/S Line	Feet From	E/W Line	County
C	1	21S	36E	6	3388	N	2114	W	LEA

**8. Pool Information**

HARDY;BLINEBRY	29710
HARDY;TUBB-DRINKARD	29760

**Additional Well Information**

9. Work Type New Well	10. Well Type OIL	11. Cable/Rotary	12. Lease Type State	13. Ground Level Elevation 3499
14. Multiple Y	15. Proposed Depth	16. Formation Drinkard	17. Contractor	18. Spud Date 7/1/2008
Depth to Ground water 75		Distance from nearest fresh water well		Distance to nearest surface water
Pit: <input type="checkbox"/> Liner: Synthetic <input type="checkbox"/> <input type="checkbox"/> miles thick Clay <input type="checkbox"/> Pit Volume:      bbls Drilling Method: Closed Loop System <input checked="" type="checkbox"/> Fresh Water <input type="checkbox"/> Brine <input type="checkbox"/> Diesel/Oil-based <input type="checkbox"/> Gas/Air <input type="checkbox"/>				

**19. Proposed Casing and Cement Program**

Type	Hole Size	Casing Type	Casing Weight/ft	Setting Depth	Sacks of Cement	Estimated TOC
Surf	12.25	8.625	24	1330	700	0
Prod	7.875	5.5	17	7300	1100	0

**Casing/Cement Program: Additional Comments**

Fresh water and fresh water mud will be used for drilling the surface hole. Brine and brine based mud will be used for drilling the production hole.

**Proposed Blowout Prevention Program**

Type	Working Pressure	Test Pressure	Manufacturer
Annular	3000	1500	
Blind	3000	3000	
Pipe	3000	3000	

I hereby certify that the information given above is true and complete to the best of my knowledge and belief. I further certify that the drilling pit will be constructed according to NMOCD guidelines <input type="checkbox"/> , a general permit <input type="checkbox"/> , or an (attached) alternative OCD-approved plan <input type="checkbox"/> .	<b>OIL CONSERVATION DIVISION</b>
Printed Name: Electronically filed by Philana Thompson	Approved By: Paul Kautz
Title: Regulatory Technician	Title: Geologist
Email Address: thomppp@conocophillips.com	Approved Date: 5/19/2008      Expiration Date: 5/19/2010
Date: 5/19/2008      Phone: 505-326-9530	Conditions of Approval Attached

DISTRICT I  
1825 N. French Dr., Hobbs, NM 88240

DISTRICT II  
1301 W. Grand Avenue, Artesia, NM 88210

DISTRICT III  
1000 Rio Brazos Rd., Aztec, NM 87410

DISTRICT IV  
1220 S. St. Francis Dr., Santa Fe, NM 87505

State of New Mexico  
Energy, Minerals & Natural Resources Department

OIL CONSERVATION DIVISION  
1220 South St. Frances Dr.  
Santa Fe, NM 87505

Form C-102  
Revised October 12, 2005  
Submit to Appropriate District Office  
State Lease - 4 Copies  
Fee Lease - 3 Copies

☐ AMENDED REPORT

WELL LOCATION AND ACREAGE DEDICATION PLAT

API Number 30-025-	Pool Code 29710	Pool Name Hardy; Blinebry
Property Code 31471	Property Name STATE F-1	Well Number 25
OGRID No. 217817	Operator Name CONOCOPHILLIPS COMPANY	Elevation 3499'

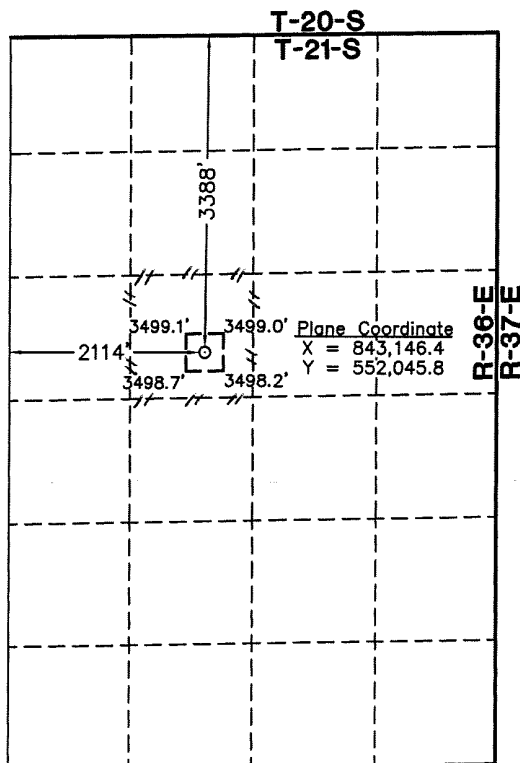
Surface Location

UL or lot No. 11	Section 1	Township 21 S	Range 36 E	Lot Idn	Feet from the 3388	North/South line NORTH	Feet from the 2114	East/West line WEST	County LEA
---------------------	--------------	------------------	---------------	---------	-----------------------	---------------------------	-----------------------	------------------------	---------------

Bottom Hole Location If Different From Surface

UL or lot No.	Section	Township	Range	Lot Idn	Feet from the	North/South line	Feet from the	East/West line	County
Dedicated Acres 40	Joint or Infill	Consolidation Code	Order No.						

NO ALLOWABLE WILL BE ASSIGNED TO THIS COMPLETION UNTIL ALL INTERESTS HAVE BEEN CONSOLIDATED OR A NON-STANDARD UNIT HAS BEEN APPROVED BY THE DIVISION



OPERATOR CERTIFICATION

I hereby certify the information contained herein to be true and complete to the best of my knowledge and belief, and that this organization either owns a working interest or unleased mineral interest in the land including the proposed bottom hole location or has a right to drill this well at this location pursuant to a contract with an owner of such a mineral or working interest, or to a voluntary pooling agreement or a compulsory pooling order heretofore entered by the division.

*Celeste G. Dale* 05/19/08  
Signature Date  
Celeste G. Dale  
Printed Name

SURVEYOR CERTIFICATION

I hereby certify that the well location shown on this plat was plotted from field notes of actual surveys made by me or under my supervision and that the same is true and correct to the best of my belief.

February 18, 2008

Date of Survey LVA  
Signature & Seal of Professional Surveyor

*[Signature]*

W.O. Num. 2008-0131

Certificate No. MACON McDONALD 12185

NOTE:

- 1) Plane Coordinates shown hereon are Transverse Mercator Grid and Conform to the "New Mexico Coordinate System", New Mexico East Zone, North American Datum of 1927. Distances shown hereon are mean horizontal surface values.

1" = 2000'

DISTRICT I  
1625 N. French Dr., Hobbs, NM 88240

DISTRICT II  
1301 W. Grand Avenue, Artesia, NM 88210

DISTRICT III  
1000 Rio Brazos Rd., Aztec, NM 87410

DISTRICT IV  
1220 S. St. Francis Dr., Santa Fe, NM 87505

State of New Mexico  
Energy, Minerals & Natural Resources Department

OIL CONSERVATION DIVISION  
1220 South St. Frances Dr.  
Santa Fe, NM 87505

Form C-102  
Revised October 12, 2005  
Submit to Appropriate District Office  
State Lease - 4 Copies  
Fee Lease - 3 Copies

☐ AMENDED REPORT

WELL LOCATION AND ACREAGE DEDICATION PLAT

API Number 30-025-	Pool Code 29760	Pool Name Hardy; Tubb-Drinkard
Property Code 31471	Property Name STATE F-1	Well Number 25
OGRID No. 217817	Operator Name CONOCOPHILLIPS COMPANY	Elevation 3499'

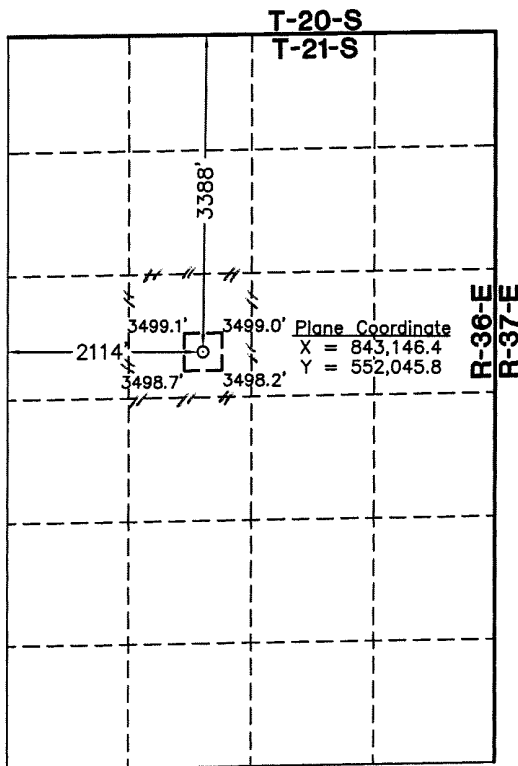
Surface Location

UL or lot No. 11	Section 1	Township 21 S	Range 36 E	Lot Idn	Feet from the 3388	North/South line NORTH	Feet from the 2114	East/West line WEST	County LEA
---------------------	--------------	------------------	---------------	---------	-----------------------	---------------------------	-----------------------	------------------------	---------------

Bottom Hole Location If Different From Surface

UL or lot No.	Section	Township	Range	Lot Idn	Feet from the	North/South line	Feet from the	East/West line	County
Dedicated Acres 40	Joint or Infill	Consolidation Code	Order No.						

NO ALLOWABLE WILL BE ASSIGNED TO THIS COMPLETION UNTIL ALL INTERESTS HAVE BEEN CONSOLIDATED OR A NON-STANDARD UNIT HAS BEEN APPROVED BY THE DIVISION



NOTE:

- 1) Plane Coordinates shown hereon are Transverse Mercator Grid and Conform to the "New Mexico Coordinate System", New Mexico East Zone, North American Datum of 1927. Distances shown hereon are mean horizontal surface values.

1" = 2000'

OPERATOR CERTIFICATION

I hereby certify the information contained herein is true and complete to the best of my knowledge and belief, and that this organization either owns a working interest or unleased mineral interest in the land including the proposed bottom hole location or has a right to drill this well at this location pursuant to a contract with an owner of such a mineral or working interest, or to a voluntary pooling agreement or a compulsory pooling order heretofore entered by the division.

*Celeste G. Dale* 05/19/08  
Signature Date  
Celeste G. Dale  
Printed Name

SURVEYOR CERTIFICATION

I hereby certify that the well location shown on this plat was plotted from field notes of actual surveys made by me or under my supervision and that the same is true and correct to the best of my belief.

February 18, 2008

Date of Survey LVA  
Signature & Seal of Professional Surveyor

*W.O. Num. 2008-0131*  
W.O. Num. 2008-0131  
Certificate No. MACON McDONALD 12185

## Permit Comments

Operator: CONOCOPHILLIPS COMPANY , 217817

Well: STATE F 1 #025

API: 30-025-38914

Created By	Comment	Comment Date
DMULL	Will require the form C-103 per R-11363 "Pre Approved Pools and Area" for Downhole commingling before multiple zones can be produced by commingling in the wellbore accordance with the procedure set forth in Rule 303C(3)(b).	5/19/2008

# Permit Conditions of Approval

Operator: CONOCOPHILLIPS COMPANY , 217817

Well: STATE F 1 #025

API: 30-025-38914

OCD Reviewer	Condition
DMULL	Will require the form C-103 per R-11363 "Pre Approved Pools & Area" for Downhole commingling before multiple zones can be produced by commingling in the wellbore accordance with the procedure set forth in Rule 303C(3)(b).
pkautz	Pit construction and closure must satisfy all requirements of your approved plan, O.C.D. Rule 19.15.2.50, and the Pit and Below-Grade Tank Guidelines