

**State of New Mexico**  
**Energy, Minerals and Natural Resources**  
**Oil Conservation Division**  
**1220 S. St Francis Dr.**  
**Santa Fe, NM 87505**

**APPLICATION FOR PERMIT TO DRILL, RE-ENTER, DEEPEN, PLUGBACK, OR ADD A ZONE**

|  |                               |                               |
|--|-------------------------------|-------------------------------|
| 1. Operator Name and Address<br>CONOCOPHILLIPS COMPANY<br>3401 E. 30TH STREET<br>FARMINGTON , NM 87402 |                               | 2. OGRID Number<br>217817     |
|  |                               | 3. API Number<br>30-025-38909 |
| 4. Property Code<br>31471  | 5. Property Name<br>STATE F 1 | 6. Well No.<br>020            |

**7. Surface Location**

|          |         |          |       |         |           |          |           |          |        |
|----------|---------|----------|-------|---------|-----------|----------|-----------|----------|--------|
| UL - Lot | Section | Township | Range | Lot Idn | Feet From | N/S Line | Feet From | E/W Line | County |
| G        | 1       | 21S      | 36E   | 15      | 3300      | S        | 2080      | E        | LEA    |

**8. Pool Information**

|                     |       |
|---------------------|-------|
| HARDY;BLINEBRY      | 29710 |
| HARDY;TUBB-DRINKARD | 29760 |

**Additional Well Information**

|  |                      |  |                         |                                    |
|--|----------------------|--|-------------------------|------------------------------------|
| 9. Work Type<br>New Well   | 10. Well Type<br>OIL | 11. Cable/Rotary                       | 12. Lease Type<br>State | 13. Ground Level Elevation<br>3497 |
| 14. Multiple<br>Y  | 15. Proposed Depth   | 16. Formation<br>Abo                   | 17. Contractor          | 18. Spud Date<br>5/30/2008         |
| Depth to Ground water<br>75  |                      | Distance from nearest fresh water well |                         | Distance to nearest surface water  |
| Pit: Liner: Synthetic <input type="checkbox"/> miles thick      Clay <input type="checkbox"/> Pit Volume:      bbls      Drilling Method:<br>Closed Loop System <input checked="" type="checkbox"/> Fresh Water <input type="checkbox"/> Brine <input type="checkbox"/> Diesel/Oil-based <input type="checkbox"/> Gas/Air <input type="checkbox"/> |                      |  |                         |                                    |

**19. Proposed Casing and Cement Program**

| Type | Hole Size | Casing Type | Casing Weight/ft | Setting Depth | Sacks of Cement | Estimated TOC |
|------|-----------|-------------|------------------|---------------|-----------------|---------------|
| Surf | 12.25     | 8.625       | 24               | 1340          | 100             | 0             |
| Prod | 7.875     | 5.5         | 17               | 7300          | 1100            | 0             |

**Casing/Cement Program: Additional Comments**

|  |
|--|
|  |
|--|

**Proposed Blowout Prevention Program**

| Type    | Working Pressure | Test Pressure | Manufacturer |
|---------|------------------|---------------|--------------|
| Annular | 3000             | 1500          |              |
| Blind   | 3000             | 3000          |              |
| Pipe    | 3000             | 3000          |              |

|  |                           |                            |
|--|---------------------------|----------------------------|
| I hereby certify that the information given above is true and complete to the best of my knowledge and belief.<br>I further certify that the drilling pit will be constructed according to NMOCD guidelines <input type="checkbox"/> , a general permit <input type="checkbox"/> , or an (attached) alternative OCB-approved plan <input type="checkbox"/> .<br>Printed Name: Electronically filed by Philana Thompson<br>Title: Regulatory Technician<br>Email Address: thomppp@conocophillips.com<br>Date: 5/19/2008 | OIL CONSERVATION DIVISION |                            |
|  | Approved By: Paul Kautz   |                            |
|  | Title: Geologist          |                            |
|  | Approved Date: 5/19/2008  | Expiration Date: 5/19/2010 |
|  | Phone: 505-326-9530       |                            |
| Conditions of Approval Attached  |                           |                            |

District I  
 1625 N. French Dr., Hobbs, NM 88240  
 Phone:(505) 393-6161 Fax:(505) 393-0720

District II  
 1301 W. Grand Ave., Artesia, NM 88210  
 Phone:(505) 748-1283 Fax:(505) 748-9720

District III  
 1000 Rio Brazos Rd., Aztec, NM 87410  
 Phone:(505) 334-6178 Fax:(505) 334-6170

District IV  
 1220 S. St Francis Dr., Santa Fe, NM 87505  
 Phone:(505) 476-3470 Fax:(505) 476-3462

**State of New Mexico**  
**Energy, Minerals and Natural Resources**  
**Oil Conservation Division**  
**1220 S. St Francis Dr.**  
**Santa Fe, NM 87505**

Form C-102  
 Permit 75144

**WELL LOCATION AND ACREAGE DEDICATION PLAT**

|                               |  |                                |
|-------------------------------|--|--------------------------------|
| 1. API Number<br>30-025-38909 | 2. Pool Code<br>29710                      | 3. Pool Name<br>HARDY,BLINEBRY |
| 4. Property Code<br>31471     | 5. Property Name<br>STATE F 1              | 6. Well No.<br>020             |
| 7. OGRID No.<br>217817        | 8. Operator Name<br>CONOCOPHILLIPS COMPANY | 9. Elevation<br>3497           |

**10. Surface Location**

| UL - Lot | Section | Township | Range | Lot Idn | Feet From | N/S Line | Feet From | E/W Line | County |
|----------|---------|----------|-------|---------|-----------|----------|-----------|----------|--------|
| G        | 1       | 21S      | 36E   | 15      | 3300      | S        | 2080      | E        | LEA    |

**11. Bottom Hole Location If Different From Surface**

| UL - Lot                     | Section | Township            | Range | Lot Idn                | Feet From | N/S Line | Feet From     | E/W Line | County |
|------------------------------|---------|---------------------|-------|------------------------|-----------|----------|---------------|----------|--------|
| 12. Dedicated Acres<br>40.00 |         | 13. Joint or Infill |       | 14. Consolidation Code |           |          | 15. Order No. |          |        |

**NO ALLOWABLE WILL BE ASSIGNED TO THIS COMPLETION UNTIL ALL INTERESTS HAVE BEEN CONSOLIDATED OR A NON-STANDARD UNIT HAS BEEN APPROVED BY THE DIVISION**

|  |  |
|--|--|
| <div style="text-align: center; font-weight: bold; margin-bottom: 10px;">OPERATOR CERTIFICATION</div> <p><i>I hereby certify that the information contained herein is true and complete to the best of my knowledge and belief, and that this organization either owns a working interest or unleased mineral interest in the land including the proposed bottom hole location(s) or has a right to drill this well at this location pursuant to a contract with an owner of such a mineral or working interest, or to a voluntary pooling agreement or a compulsory pooling order heretofore entered by the division.</i></p> <p>E-Signed By: Philana Thompson<br/>       Title: Regulatory Technician<br/>       Date: 5/19/2008</p> | <div style="text-align: center; font-weight: bold; margin-bottom: 10px;">SURVEYOR CERTIFICATION</div> <p><i>I hereby certify that the well location shown on this plat was plotted from field notes of actual surveys made by me or under my supervision, and that the same is true and correct to the best of my belief.</i></p> <p>Surveyed By: Macon McDonald<br/>       Date of Survey: 2/18/2008<br/>       Certificate Number: 12185</p> |
|--|--|

DISTRICT I  
1625 N. French Dr., Hobbs, NM 88240

DISTRICT II  
1301 W. Grand Avenue, Artesia, NM 88210

DISTRICT III  
1000 Rio Brazos Rd., Aztec, NM 87410

DISTRICT IV  
1220 S. St. Francis Dr., Santa Fe, NM 87505

State of New Mexico  
Energy, Minerals & Natural Resources Department

OIL CONSERVATION DIVISION  
1220 South St. Frances Dr.  
Santa Fe, NM 87505

Form C-102  
Revised October 12, 2005  
Submit to Appropriate District Office  
State Lease - 4 Copies  
Fee Lease - 3 Copies

☐ AMENDED REPORT

WELL LOCATION AND ACREAGE DEDICATION PLAT

|                        |   |                                   |
|------------------------|---|-----------------------------------|
| API Number<br>30-025-  | Pool Code<br>29760                      | Pool Name<br>Hardy; Tubb-Drinkard |
| Property Code<br>31471 | Property Name<br>STATE F-1              | Well Number<br>20                 |
| OGRID No.<br>217817    | Operator Name<br>CONOCOPHILLIPS COMPANY | Elevation<br>3497'                |

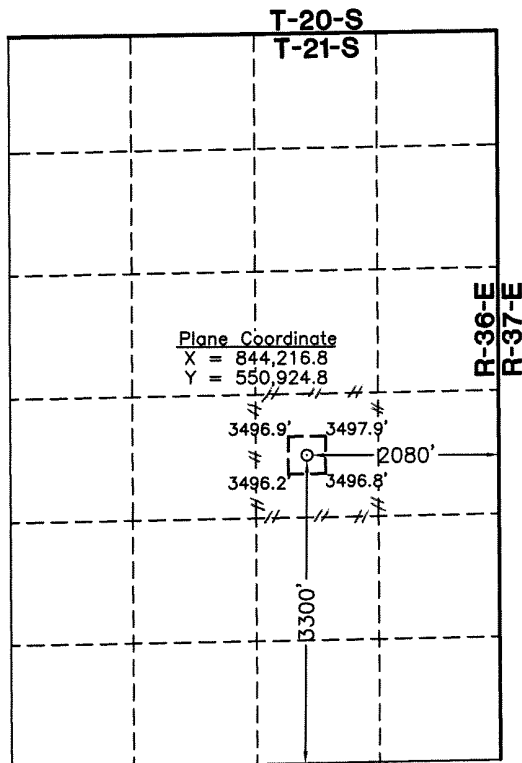
Surface Location

| UL or lot No. | Section | Township | Range | Lot Idn | Feet from the | North/South line | Feet from the | East/West line | County |
|---------------|---------|----------|-------|---------|---------------|------------------|---------------|----------------|--------|
| 15            | 1       | 21 S     | 36 E  |         | 3300          | SOUTH            | 2080          | EAST           | LEA    |

Bottom Hole Location If Different From Surface

| UL or lot No.         | Section         | Township           | Range     | Lot Idn | Feet from the | North/South line | Feet from the | East/West line | County |
|-----------------------|-----------------|--------------------|-----------|---------|---------------|------------------|---------------|----------------|--------|
|                       |                 |                    |           |         |               |                  |               |                |        |
| Dedicated Acres<br>40 | Joint or Infill | Consolidation Code | Order No. |         |               |                  |               |                |        |

NO ALLOWABLE WILL BE ASSIGNED TO THIS COMPLETION UNTIL ALL INTERESTS HAVE BEEN CONSOLIDATED OR A NON-STANDARD UNIT HAS BEEN APPROVED BY THE DIVISION



1" = 2000'

NOTE:

- 1) Plane Coordinates shown hereon are Transverse Mercator Grid and Conform to the "New Mexico Coordinate System", New Mexico East Zone, North American Datum of 1927. Distances shown hereon are mean horizontal surface values.

OPERATOR CERTIFICATION

I hereby certify the information contained herein is true and complete to the best of my knowledge and belief, and that this organization either owns a working interest or unless mineral interest in the land including the proposed bottom hole location or has a right to drill this well at this location pursuant to a contract with an owner of such a mineral or working interest, or to a voluntary pooling agreement or a compulsory pooling order heretofore entered by the division.

*Celeste G. Dale* 05/15/08  
Signature Date  
Celeste G. Dale  
Printed Name

SURVEYOR CERTIFICATION

I hereby certify that the well location shown on this plat was plotted from field notes of actual surveys made by me or under my supervision and that the same is true and correct to the best of my belief.

February 18, 2008

Date of Survey LVA  
Signature & Seal of Professional Surveyor

*W.O. Num. 2008-0135*

W.O. Num. 2008-0135

Certificate No. MACON McDONALD 12185

## Permit Comments

Operator: CONOCOPHILLIPS COMPANY , 217817

Well: STATE F 1 #020

API: 30-025-38909

| Created By | Comment   | Comment Date |
|------------|---|--------------|
| DMULL      | Sending back for corections.  | 5/19/2008    |
| DMULL      | Will require the form C-103 per R-11363 "Pre Approved Pools and area" for Downhole commingling before multiple zones can be produced by commingling in the wellbore accordance with the procedure set forth in Rule 303C(3)(b). | 5/19/2008    |

# Permit Conditions of Approval

Operator: CONOCOPHILLIPS COMPANY , 217817

Well: STATE F 1 #020

API: 30-025-38909

| OCD<br>Reviewer | Condition  |
|-----------------|--|
| pkautz          | Pit construction and closure must satisfy all requirements of your approved plan, O.C.D. Rule 19.15.2.50, and the Pit and Below-Grade Tank Guidelines  |
| DMULL           | Will require the form C-103 per R-11363 "Pre Approved Pool & Area" for Downhole Commingling before multiple zones can be produced by commingling in the well bore accordance with the procedure set forth in Rule 303C (3)(b). |