

State of New Mexico
Energy, Minerals and Natural Resources
Oil Conservation Division
1220 S. St Francis Dr.
Santa Fe, NM 87505

APPLICATION FOR PERMIT TO DRILL, RE-ENTER, DEEPEN, PLUGBACK, OR ADD A ZONE

1. Operator Name and Address RANGE OPERATING NEW MEXICO INC 100 THROCKMORTON STREET FT WORTH , TX 76102		2. OGRID Number 227588
		3. API Number 30-025-39062
4. Property Code 301559	5. Property Name HILL	6. Well No. 002

7. Surface Location

UL - Lot	Section	Township	Range	Lot Idn	Feet From	N/S Line	Feet From	E/W Line	County
B	4	21S	37E	7	2970	N	2310	E	LEA

8. Pool Information

BLINEBRY OIL AND GAS (OIL)	6660
WANTZ, ABO	62700
TUBB OIL AND GAS (OIL)	60240
DRINKARD	19190

Additional Well Information

9. Work Type New Well	10. Well Type OIL	11. Cable/Rotary	12. Lease Type Private	13. Ground Level Elevation 3445
14. Multiple Y	15. Proposed Depth 6500	16. Formation Abo	17. Contractor	18. Spud Date 9/14/2008
Depth to Ground water		Distance from nearest fresh water well		Distance to nearest surface water
Pit: Liner: Synthetic <input type="checkbox"/> miles thick Clay <input type="checkbox"/> Pit Volume: bbls Drilling Method: Closed Loop System <input type="checkbox"/> Fresh Water <input checked="" type="checkbox"/> Brine <input type="checkbox"/> Diesel/Oil-based <input type="checkbox"/> Gas/Air <input type="checkbox"/>				

19. Proposed Casing and Cement Program

Type	Hole Size	Casing Type	Casing Weight/ft	Setting Depth	Sacks of Cement	Estimated TOC
Surf	12.25	8.625	24	1100	450	
Prod	7.875	5.5	17	6500	2000	

Casing/Cement Program: Additional Comments

Proposed Blowout Prevention Program

Type	Working Pressure	Test Pressure	Manufacturer
DoubleRam	3000	3000	Schaffer

I hereby certify that the information given above is true and complete to the best of my knowledge and belief. I further certify that the drilling pit will be constructed according to NMOCD guidelines <input type="checkbox"/> a general permit <input type="checkbox"/> or an (attached) alternative OCB-approved plan <input type="checkbox"/> .	OIL CONSERVATION DIVISION
Printed Name: Electronically filed by Linda Stiles	Approved By: Paul Kautz
Title: Sr Engineering Tech	Title: Geologist
Email Address: lstyles@rangeresources.com	Approved Date: 8/1/2008 Expiration Date: 8/1/2010
Date: 7/21/2008 Phone: 817-810-1908	Conditions of Approval Attached

DISTRICT I
1625 N. FRENCH DR., HOBBS, NM 88240

State of New Mexico
Energy, Minerals and Natural Resources Department

Form C-102

DISTRICT II
1301 W. GRAND AVENUE, ARTESIA, NM 88210

OIL CONSERVATION DIVISION
1220 SOUTH ST. FRANCIS DR.
Santa Fe, New Mexico 87505

Revised October 12, 2005
Submit to Appropriate District Office
State Lease - 4 Copies
Fee Lease - 3 Copies

DISTRICT III
1000 Rio Brazos Rd., Aztec, NM 87410

DISTRICT IV
1220 S. ST. FRANCIS DR., SANTA FE, NM 87505

WELL LOCATION AND ACREAGE DEDICATION PLAT

☐ AMENDED REPORT

API Number	Pool Code 06660	Pool Name Blinebry Oil & Gas (Oil)
Property Code	Property Name HILL	Well Number 2
OGRID No. 227588	Operator Name RANGE OPERATING NEW MEXICO, INC.	Elevation 3446'

Surface Location

UL or lot No.	Section	Township	Range	Lot Idn	Feet from the	North/South line	Feet from the	East/West line	County
10	4	21-S	37-E		2970	NORTH	2310	EAST	LEA

Bottom Hole Location If Different From Surface

UL or lot No.	Section	Township	Range	Lot Idn	Feet from the	North/South line	Feet from the	East/West line	County
Dedicated Acres	Joint or Infill	Consolidation Code	Order No.						

NO ALLOWABLE WILL BE ASSIGNED TO THIS COMPLETION UNTIL ALL INTERESTS HAVE BEEN CONSOLIDATED
OR A NON-STANDARD UNIT HAS BEEN APPROVED BY THE DIVISION

LOT 4	LOT 3	LOT 2	LOT 1
37.85 AC. LOT 5	37.87 AC. LOT 6	37.89 AC. LOT 7	37.91 AC. LOT 8
40 AC. LOT 12	40 AC. LOT 11	40 AC. LOT 9	40 AC. LOT 10
40 AC. LOT 13	40 AC. LOT 14	40 AC. LOT 15	40 AC. LOT 16
40 AC.	40 AC.	40 AC.	40 AC.

SCALE: 1"=2000'

GEODETIC COORDINATES
NAD 27 NME
Y=552664.2 N
X=859695.3 E
LAT.=32.513971° N
LONG.=103.166485° W

OPERATOR CERTIFICATION

I hereby certify that the information herein is true and complete to the best of my knowledge and belief, and that this organization either owns a working interest or unleased mineral interest in the land including the proposed bottom hole location or has a right to drill this well at this location pursuant to a contract with an owner of such mineral or working interest, or to a voluntary pooling agreement or a compulsory pooling order heretofore entered by the division.

Linda Brown 7/9/08
Signature Date

Linda Brown
Printed Name

SURVEYOR CERTIFICATION

I hereby certify that the well location shown on this plat was plotted from field notes of actual surveys made by me or under my supervision, and that the same is true and correct to the best of my belief.

JUNE 26, 2008
Date Surveyed LA

Signature & Seal of Professional Surveyor
12641
Gary H. Eidson 7/11/08

Certificate No. GARY EIDSON 12641
RONALD J. EIDSON 3239

DISTRICT I
1625 N. FRENCH DR., HOBBS, NM 88240

State of New Mexico
Energy, Minerals and Natural Resources Department

DISTRICT II
1301 W. GRAND AVENUE, ARTESIA, NM 88210

DISTRICT III
1000 Rio Brazos Rd., Aztec, NM 87410

OIL CONSERVATION DIVISION
1220 SOUTH ST. FRANCIS DR.
Santa Fe, New Mexico 87505

Form C-102
Revised October 12, 2005
Submit to Appropriate District Office
State Lease - 4 Copies
Fee Lease - 3 Copies

DISTRICT IV
1220 S. ST. FRANCIS DR., SANTA FE, NM 87505

WELL LOCATION AND ACREAGE DEDICATION PLAT

☐ AMENDED REPORT

API Number	Pool Code 62700	Pool Name Wantz; Abo
Property Code	Property Name HILL	Well Number 2
OGRID No. 227588	Operator Name RANGE OPERATING NEW MEXICO, INC.	Elevation 3446'

Surface Location

UL or lot No.	Section	Township	Range	Lot Idn	Feet from the	North/South line	Feet from the	East/West line	County
10	4	21-S	37-E		2970	NORTH	2310	EAST	LEA

Bottom Hole Location If Different From Surface

UL or lot No.	Section	Township	Range	Lot Idn	Feet from the	North/South line	Feet from the	East/West line	County
Dedicated Acres	Joint or Infill	Consolidation Code	Order No.						

NO ALLOWABLE WILL BE ASSIGNED TO THIS COMPLETION UNTIL ALL INTERESTS HAVE BEEN CONSOLIDATED
OR A NON-STANDARD UNIT HAS BEEN APPROVED BY THE DIVISION

	OPERATOR CERTIFICATION <i>I hereby certify that the information herein is true and complete to the best of my knowledge and belief, and that this organization either owns a working interest or unleased mineral interest in the land including the proposed bottom hole location or has a right to drill this well at this location pursuant to a contract with an owner of such mineral or working interest, or to a voluntary pooling agreement or a compulsory pooling order heretofore entered by the division.</i> Signature: <u>Linda Brown</u> Date: <u>7/9/08</u> Printed Name: <u>Linda Brown</u>	
	SURVEYOR CERTIFICATION <i>I hereby certify that the well location shown on this plat was plotted from field notes of actual surveys made by me or under my supervision, and that the same is true and correct to the best of my belief.</i> Date Surveyed: <u>JUNE 26, 2008</u> Signature & Seal of Professional Surveyor: <u>GARY EIDSON</u> 12641 Certificate No. <u>GARY EIDSON 12641</u> <u>RONALD J. EIDSON 3239</u>	

SCALE: 1"=2000'

GEODETIC COORDINATES
NAD 27 NME
Y=552664.2 N
X=859695.3 E
LAT.=32.513971° N
LONG.=103.166485° W

DISTRICT I
1625 N. FRENCH DR., HOBBS, NM 88240

State of New Mexico
Energy, Minerals and Natural Resources Department

DISTRICT II
1301 W. GRAND AVENUE, ARTESIA, NM 88210

DISTRICT III
1000 Rio Brazos Rd., Aztec, NM 87410

DISTRICT IV
1220 S. ST. FRANCIS DR., SANTA FE, NM 87505

OIL CONSERVATION DIVISION
1220 SOUTH ST. FRANCIS DR.
Santa Fe, New Mexico 87505

Form C-102
Revised October 12, 2005
Submit to Appropriate District Office
State Lease - 4 Copies
Fee Lease - 3 Copies

WELL LOCATION AND ACREAGE DEDICATION PLAT

☐ AMENDED REPORT

API Number	Pool Code 60240	Pool Name Tubb Oil & Gas (oil)
Property Code	Property Name HILL	Well Number 2
OGRID No. 227588	Operator Name RANGE OPERATING NEW MEXICO, INC.	Elevation 3446'

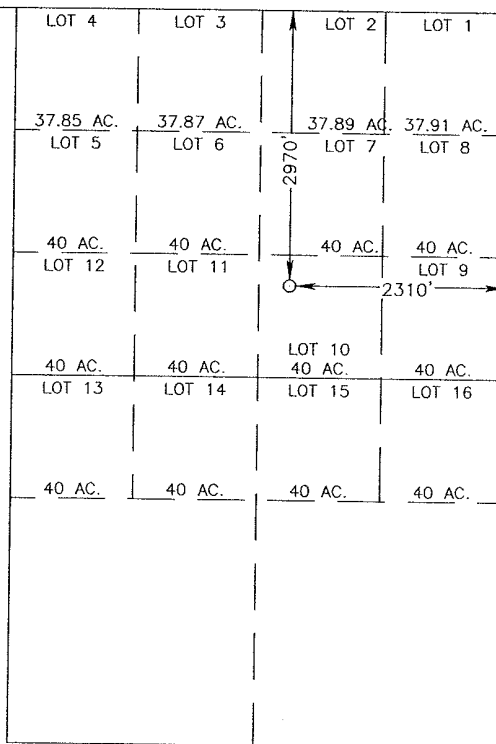
Surface Location

UL or lot No.	Section	Township	Range	Lot Idn	Feet from the	North/South line	Feet from the	East/West line	County
10	4	21-S	37-E		2970	NORTH	2310	EAST	LEA

Bottom Hole Location If Different From Surface

UL or lot No.	Section	Township	Range	Lot Idn	Feet from the	North/South line	Feet from the	East/West line	County
Dedicated Acres	Joint or Infill	Consolidation Code	Order No.						

NO ALLOWABLE WILL BE ASSIGNED TO THIS COMPLETION UNTIL ALL INTERESTS HAVE BEEN CONSOLIDATED
OR A NON-STANDARD UNIT HAS BEEN APPROVED BY THE DIVISION



SCALE: 1"=2000'

GEODETIC COORDINATES
NAD 27 NME
Y=552664.2 N
X=859695.3 E

LAT.=32.513971° N
LONG.=103.166485° W

OPERATOR CERTIFICATION

I hereby certify that the information herein is true and complete to the best of my knowledge and belief, and that this organization either owns a working interest or unleased mineral interest in the land including the proposed bottom hole location or has a right to drill this well at this location pursuant to a contract with an owner of such mineral or working interest, or to a voluntary pooling agreement or a compulsory pooling order heretofore entered by the division.

Linda Brown 7/9/08
Signature Date
Linda Brown
Printed Name

SURVEYOR CERTIFICATION

I hereby certify that the well location shown on this plat was plotted from field notes of actual surveys made by me or under my supervision, and that the same is true and correct to the best of my belief.

GARY EIDSON 7/1/08
Date Surveyed Signature & Seal of Professional Surveyor
12641
Certificate No. GARY EIDSON 12641
RONALD J. EIDSON 3239

DISTRICT I
1625 N. FRENCH DR., HOBBS, NM 88240

State of New Mexico
Energy, Minerals and Natural Resources Department

DISTRICT II
1301 W. GRAND AVENUE, ARTESIA, NM 88210

DISTRICT III
1000 Rio Brazos Rd., Aztec, NM 87410

DISTRICT IV
1220 S. ST. FRANCIS DR., SANTA FE, NM 87505

OIL CONSERVATION DIVISION
1220 SOUTH ST. FRANCIS DR.
Santa Fe, New Mexico 87505

Form C-102
Revised October 12, 2005
Submit to Appropriate District Office
State Lease - 4 Copies
Fee Lease - 3 Copies

WELL LOCATION AND ACREAGE DEDICATION PLAT

☐ AMENDED REPORT

API Number	Pool Code 19190	Pool Name Drinkard
Property Code	Property Name HILL	Well Number 2
OGRID No. 227588	Operator Name RANGE OPERATING NEW MEXICO, INC.	Elevation 3446'

Surface Location

UL or lot No.	Section	Township	Range	Lot Idn	Feet from the	North/South line	Feet from the	East/West line	County
10	4	21-S	37-E		2970	NORTH	2310	EAST	LEA

Bottom Hole Location If Different From Surface

UL or lot No.	Section	Township	Range	Lot Idn	Feet from the	North/South line	Feet from the	East/West line	County
Dedicated Acres	Joint or Infill	Consolidation Code	Order No.						

NO ALLOWABLE WILL BE ASSIGNED TO THIS COMPLETION UNTIL ALL INTERESTS HAVE BEEN CONSOLIDATED
OR A NON-STANDARD UNIT HAS BEEN APPROVED BY THE DIVISION

	<p>OPERATOR CERTIFICATION</p> <p>I hereby certify that the information herein is true and complete to the best of my knowledge and belief, and that this organization either owns a working interest or unleased mineral interest in the land including the proposed bottom hole location or has a right to drill this well at this location pursuant to a contract with an owner of such mineral or working interest, or to a voluntary pooling agreement or a compulsory pooling order heretofore entered by the division.</p> <p><i>Linda Brown</i> 7/9/08 Signature Date <i>Linda Brown</i> Printed Name</p>
	<p>SURVEYOR CERTIFICATION</p> <p>I hereby certify that the well location shown on this plat was plotted from field notes of actual surveys made by me or under my supervision, and that the same is true and correct to the best of my belief.</p> <p>JUNE 26, 2008 Date Surveyed Signature & Seal of Professional Surveyor 12641 <i>GARY EIDSON</i> 7/9/08 08-11-1021 Certificate No. GARY EIDSON 12641 RONALD J. EIDSON 3239</p>

Permit Comments

Operator: RANGE OPERATING NEW MEXICO INC , 227588

Well: HILL #002

API: 30-025-39062

Created By	Comment	Comment Date
LSTILES	This section is a long section occasioned by a change in township lines and the acreage involved is divided in 40 acre lots.	7/21/2008
LSTILES	This will be a Closed Loop System	7/21/2008
pkautz	Waiting on C-144	7/31/2008

Permit Conditions of Approval

Operator: RANGE OPERATING NEW MEXICO INC , 227588

Well: HILL #002

API: 30-025-39062

OCD Reviewer	Condition
pkautz	Will require DHC order before multiple zones can be commingled in wellbore