

District I
1625 N. French Dr., Hobbs, NM 88240
Phone:(505) 393-6161 Fax:(505) 393-0720
District II
811 S. First St., Artesia, NM 88210
Phone:(505) 748-1283 Fax:(505) 748-9720
District III
1000 Rio Brazos Rd., Aztec, NM 87410
Phone:(505) 334-6178 Fax:(505) 334-6170
District IV
1220 S. St Francis Dr., Santa Fe, NM 87505
Phone:(505) 476-3470 Fax:(505) 476-3462

State of New Mexico
Energy, Minerals and Natural Resources
Oil Conservation Division
1220 S. St Francis Dr.
Santa Fe, NM 87505

Form C-101
August 1, 2011
Permit 147192

APPLICATION FOR PERMIT TO DRILL, RE-ENTER, DEEPEN, PLUGBACK, OR ADD A ZONE

1. Operator Name and Address AMTEX ENERGY INC P.O. Box 3418 Midland, TX 79702		2. OGRID Number 785
		3. API Number 30-025-40519
4. Property Code 39168	5. Property Name AO 6 STATE	6. Well No. 001H

7. Surface Location

UL - Lot	Section	Township	Range	Lot Idn	Feet From	N/S Line	Feet From	E/W Line	County
I	6	22S	33E	I	2260	S	70	E	LEA

8. Pool Information

LEGG;BONE SPRING	37870
------------------	-------

Additional Well Information

9. Work Type New Well	10. Well Type OIL	11. Cable/Rotary	12. Lease Type State	13. Ground Level Elevation 3655
14. Multiple N	15. Proposed Depth 15500	16. Formation 3rd Bone Spring Sand	17. Contractor	18. Spud Date
Depth to Ground water		Distance from nearest fresh water well		Distance to nearest surface water

19. Proposed Casing and Cement Program

Type	Hole Size	Casing Type	Casing Weight/ft	Setting Depth	Sacks of Cement	Estimated TOC
Surf	17.5	13.375	54.5	600	500	
Int1	12.25	9.625	40	4900	2400	
Int2	8.75	7	26	10450	1400	
Prod	6.125	4.5	11.6	15400	750	

Casing/Cement Program: Additional Comments

Plan to drill a 17-1/2" hole to 600' with FW. Run 13-3/8", 54.5#, J-55 csg. and cement to surface. Drill 12-1/4" hole to 4,900' with brine, and run 9-5/8", 40# /47#, J-55/N-80 (with possible DVT/ECP set 200' above reef @ approx. 3,650') and cement to surface. Drill 8-3/4" hole with FW to 10,450'. Run logs and then plug back to 10,250' to kick off and drill lateral to 15,500' MD (10,860' TVD). *See Drilling Procedure #5 or #6. Run 7" 26#, P-110 csg. and cement to 2,500' in 2 stages. Drill out of 7" csg. with 6-1/8" bit and target a 10° Radius curve to land the TVD at 10,860' and drill horizontal to 15,500'+/-MD. The 4-1/2" casing liner will either be fully cemented or it will be run through the lateral with isolation packers with top of liner at 10,560'+/-.

Proposed Blowout Prevention Program

Type	Working Pressure	Test Pressure	Manufacturer
DoubleRam	3000	3000	Cameron

I hereby certify that the information given above is true and complete to the best of my knowledge and belief. I further certify that the drilling pit will be constructed according to NMOCD guidelines <input type="checkbox"/> , a general permit <input type="checkbox"/> , or an (attached) alternative OCD-approved plan <input type="checkbox"/> . Printed Name: Electronically filed by Karol Eads Title: Email Address: keads@amtenergy.com Date: 4/13/2012	OIL CONSERVATION DIVISION	
	Approved By: Paul Kautz	
	Title: Geologist	
	Approved Date: 4/18/2012	Expiration Date: 4/18/2014
	Conditions of Approval Attached	

District I
1625 N. French Dr., Hobbs, NM 88240
District II
1301 W. Grand Avenue, Artesia, NM 88210
District III
1000 Rio Brazos Rd., Aztec, NM 87410
District IV
1220 S. St. Francis Dr., Santa Fe, NM 87505

State of New Mexico
Energy, Minerals & Natural Resources Department
OIL CONSERVATION DIVISION
1220 South St. Francis Dr.
Santa Fe, NM 87505

Form C-402
Revised October 12, 2005
Submit to Appropriate District Office
State Lease- 4 Copies
Fee Lease- 3 Copies

☐ AMENDED REPORT

WELL LOCATION AND ACREAGE DEDICATION PLAT

API Number	Pool Code	Pool Name
Property Code	Property Name AO "6" STATE	Well Number 1H
OGRID No. 000785	Operator Name AMTEX ENERGY, INC.	Elevation 3655.0'

Surface Location

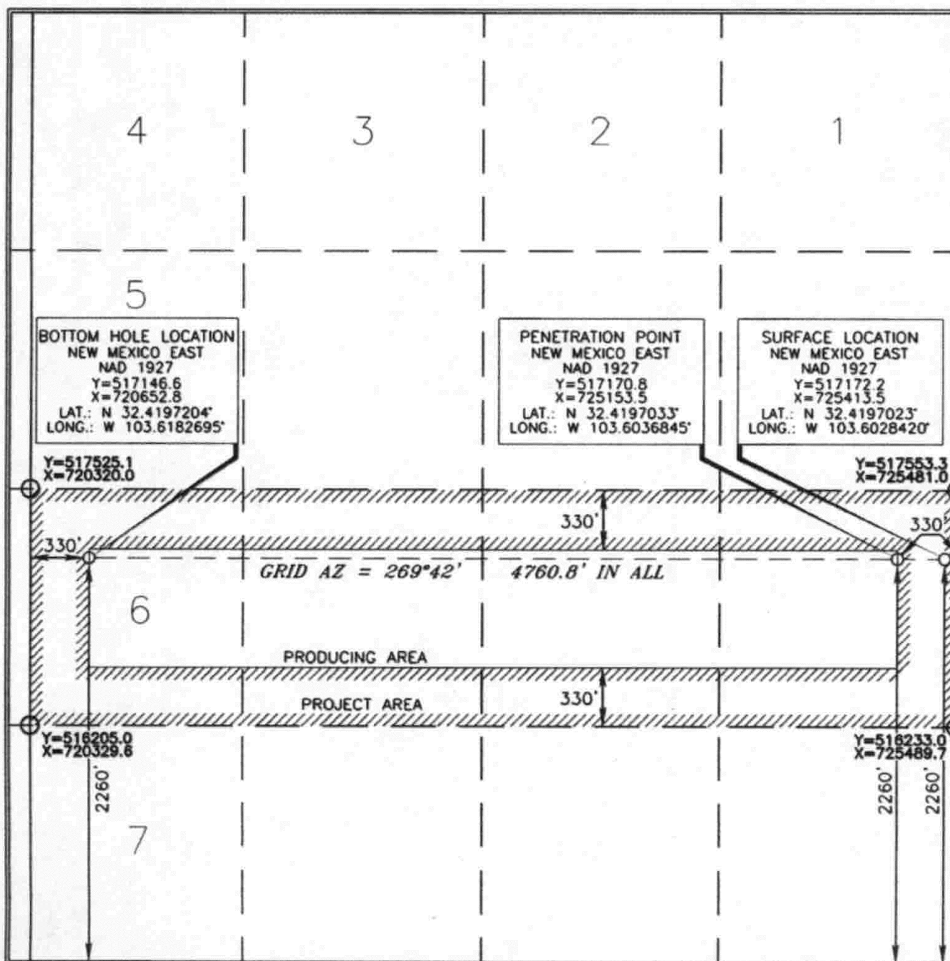
UL or lot no.	Section	Township	Range	Lot Idn	Feet from the	North/South line	Feet from the	East/West line	County
1	6	22 SOUTH	33 EAST, N.M.P.M.		2260'	SOUTH	70'	EAST	LEA

Bottom Hole Location If Different From Surface

UL or lot no.	Section	Township	Range	Lot Idn	Feet from the	North/South line	Feet from the	East/West line	County
6	6	22 SOUTH	33 EAST, N.M.P.M.		2260'	SOUTH	330'	WEST	LEA

Dedicated Acres 156.35	Joint or Infill	Consolidation Code	Order No.
---------------------------	-----------------	--------------------	-----------

No allowable will be assigned to this completion until all interests have been consolidated or a non-standard unit has been approved by the division.



OPERATOR CERTIFICATION

I hereby certify that the information contained herein is true and complete to the best of my knowledge and belief, and that this organization either owns a working interest or unleased mineral interest in the land including the proposed bottom hole location or has a right to drill this well at this location pursuant to a contract with an owner of such a mineral or working interest, or to a voluntary pooling agreement or a compulsory pooling order heretofore entered by the division.

William J. Savage 4-12-12
Signature Date
William J. Savage
Printed Name

SURVEYOR CERTIFICATION

I hereby certify that the well location shown on this plat was plotted from field notes or actual surveys made by me or under my supervision, and that the same is true and correct to the best of my belief.

APRIL 5, 2012
Date of Survey
Signature and Seal of Professional Surveyor
Terry J. Carl 4/4/2012
Certificate Number 15079

WO# 120405WL-XY (KA)

Permit Comments

Operator: AMTEX ENERGY INC , 785

Well: AO 6 STATE #001H

API: 30-025-40519

Created By	Comment	Comment Date
pkautz	Land s/S	4/13/2012
CHERRERA	OCD RECIEVED FORM C-144 CLEZ. OCD PERMIT # P1-04435	4/17/2012

Permit Conditions of Approval

Operator: AMTEX ENERGY INC , 785

Well: AO 6 STATE #001H

API: 30-025-40519

OCD Reviewer	Condition
pkautz	Once the well is spud, to prevent ground water contamination through whole or partial conduits from the surface, the operator shall drill without interruption through the fresh water zone or zones and shall immediately set in cement the water protection string