

**District I**  
1625 N. French Dr., Hobbs, NM 88240  
Phone:(575) 393-6161 Fax:(575) 393-0720  
**District II**  
811 S. First St., Artesia, NM 88210  
Phone:(575) 748-1283 Fax:(575) 748-9720  
**District III**  
1000 Rio Brazos Rd., Aztec, NM 87410  
Phone:(505) 334-6178 Fax:(505) 334-6170  
**District IV**  
1220 S. St Francis Dr., Santa Fe, NM 87505  
Phone:(505) 476-3470 Fax:(505) 476-3462

**State of New Mexico**  
**Energy, Minerals and Natural Resources**  
**Oil Conservation Division**  
**1220 S. St Francis Dr.**  
**Santa Fe, NM 87505**

Form C-101  
August 1, 2011  
Permit 148248

**APPLICATION FOR PERMIT TO DRILL, RE-ENTER, DEEPEN, PLUGBACK, OR ADD A ZONE**

1. Operator Name and Address <b>CIMAREX ENERGY CO. OF COLORADO</b> 600 N. Marienfeld St Midland, TX 79701		2. OGRID Number 162683
		3. API Number 30-015-40281
4. Property Code 39217	5. Property Name ALABAMA 6 FEE	6. Well No. 001

**7. Surface Location**

UL - Lot	Section	Township	Range	Lot Idn	Feet From	N/S Line	Feet From	E/W Line	County
G	6	19S	26E	G	1650	N	1650	E	EDDY

**8. Pool Information**

PENASCO DRAW;SA-YESO (ASSOC)	50270
------------------------------	-------

**Additional Well Information**

9. Work Type New Well	10. Well Type OIL	11. Cable/Rotary	12. Lease Type Private	13. Ground Level Elevation 3388
14. Multiple N	15. Proposed Depth 3000	16. Formation Blinbry	17. Contractor	18. Spud Date 9/1/2012
Depth to Ground water		Distance from nearest fresh water well		Distance to nearest surface water

**19. Proposed Casing and Cement Program**

Type	Hole Size	Casing Type	Casing Weight/ft	Setting Depth	Sacks of Cement	Estimated TOC
Surf	14.75	9.625	36	950	1200	0
Prod	8.75	5.5	17	3000	640	0

**Casing/Cement Program: Additional Comments**

--

**Proposed Blowout Prevention Program**

Type	Working Pressure	Test Pressure	Manufacturer
DoubleRam	3000	3000	Cameran

I hereby certify that the information given above is true and complete to the best of my knowledge and belief. I further certify that the drilling pit will be constructed according to NMOCD guidelines <input type="checkbox"/> , a general permit <input type="checkbox"/> , or an (attached) alternative OCD-approved plan <input type="checkbox"/> .	<b>OIL CONSERVATION DIVISION</b>
Printed Name: Electronically filed by Zeno Farris	Approved By: Randy Dade
Title: Manager Operations Administration	Title: District Supervisor
Email Address: zfarris@cimarex.com	Approved Date: 5/14/2012   Expiration Date: 5/14/2014
Date: 5/11/2012   Phone: 432-620-1936	Conditions of Approval Attached

DISTRICT I  
1626 N. French Dr., Hobbs, NM 88240  
Phone (505) 393-6161 Fax: (505) 393-0729

DISTRICT II  
811 S. First St., Artesia, NM 88210  
Phone (505) 748-1243 Fax: (505) 748-9720

DISTRICT III  
1000 Rio Brazos Rd., Aztec, NM 87410  
Phone (505) 334-6178 Fax: (505) 334-6178

DISTRICT IV  
1220 S. St. Francis Dr., Santa Fe, NM 87505  
Phone (505) 478-3489 Fax: (505) 478-3482

State of New Mexico  
Energy, Minerals and Natural Resources Department

Form C-102  
Revised August 1, 2011

Submit one copy to appropriate  
District Office

**OIL CONSERVATION DIVISION**  
1220 South St. Francis Dr.  
Santa Fe, New Mexico 87505

WELL LOCATION AND ACREAGE DEDICATION PLAT

☐ AMENDED REPORT

API Number 30-015-	Pool Code 50270	Pool Name Penasco Draw; SA-Yeso (Assoc)
Property Code	Property Name ALABAMA 6 FEE	Well Number 1
OGRIN No. 162683	Operator Name CIMAREX ENERGY CO. OF COLORADO	Elevation 3388'

Surface Location

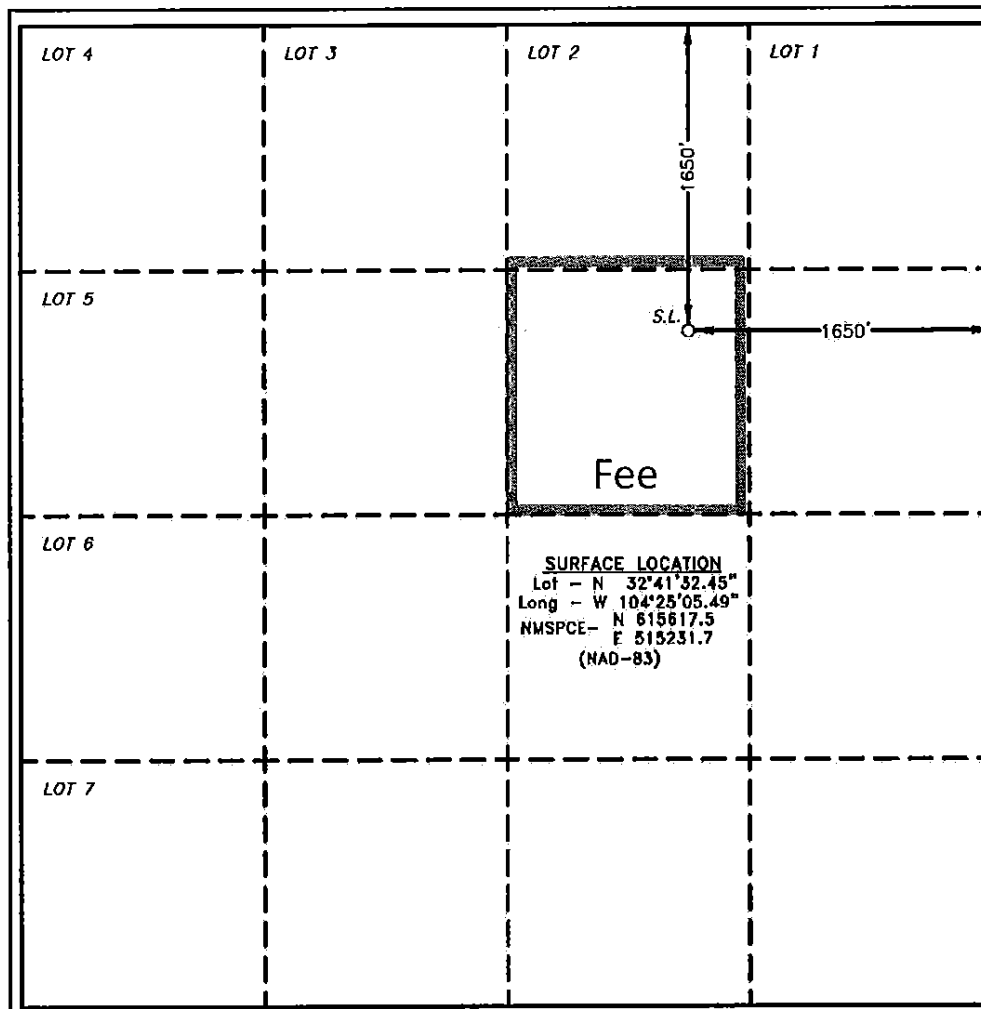
UL or lot No. G	Section 6	Township 19 S	Range 26 E	Lot Idn	Feet from the 1650	North/South line NORTH	Feet from the 1650	East/West line EAST	County EDDY
--------------------	--------------	------------------	---------------	---------	-----------------------	---------------------------	-----------------------	------------------------	----------------

Bottom Hole Location If Different From Surface

UL or lot No.	Section	Township	Range	Lot Idn	Feet from the	North/South line	Feet from the	East/West line	County
---------------	---------	----------	-------	---------	---------------	------------------	---------------	----------------	--------

Dedicated Acres 40	Joint or Infill	Consolidation Code	Order No.
-----------------------	-----------------	--------------------	-----------

NO ALLOWABLE WILL BE ASSIGNED TO THIS COMPLETION UNTIL ALL INTERESTS HAVE BEEN CONSOLIDATED  
OR A NON-STANDARD UNIT HAS BEEN APPROVED BY THE DIVISION



OPERATOR CERTIFICATION

I hereby certify that the information contained herein is true and complete to the best of my knowledge and belief, and that this organization either owns a working interest or unleased mineral interest in the land including the proposed bottom hole location or has a right to drill this well at this location pursuant to a contract with an owner of such a mineral or working interest, or to a voluntary pooling agreement or a compulsory pooling order heretofore entered by the division.

Paula Brunson 5/4/2012  
Signature Date

Paula Brunson

Printed Name

pbrunson@cimarex.com

Email Address

SURVEYOR CERTIFICATION

I hereby certify that the well location shown on this plat was plotted from field notes of actual surveys made by me or under my supervision and that the same is true and correct to the best of my belief.

Date

Signature

Professional Surveyor

No. 26169

Certificate No. Gary L. Jones 7977

BASIN SURVEYS

26169

## Permit Comments

**Operator:** CIMAREX ENERGY CO. OF COLORADO , 162683

**Well:** ALABAMA 6 FEE #001

**API:** 30-015-40281

Created By	Comment	Comment Date
ZFARRIS	The MAJORIE BGR #001 in the same qtr-qtr is an Upper Penn. well.	5/4/2012
CSHAPARD	Land p/P	5/14/2012

# Permit Conditions of Approval

**Operator:** CIMAREX ENERGY CO. OF COLORADO , 162683

**Well:** ALABAMA 6 FEE #001

**API:** 30-015-40281

OCD Reviewer	Condition
CSHAPARD	Once the well is spud, to prevent ground water contamination through whole or partial conduits from the surface, the operator shall drill without interruption through the fresh water zone or zones and shall immediately set in cement the water protection string