

**District I**  
1625 N. French Dr., Hobbs, NM 88240  
Phone:(575) 393-6161 Fax:(575) 393-0720  
**District II**  
811 S. First St., Artesia, NM 88210  
Phone:(575) 748-1283 Fax:(575) 748-9720  
**District III**  
1000 Rio Brazos Rd., Aztec, NM 87410  
Phone:(505) 334-6178 Fax:(505) 334-6170  
**District IV**  
1220 S. St Francis Dr., Santa Fe, NM 87505  
Phone:(505) 476-3470 Fax:(505) 476-3462

**State of New Mexico**  
**Energy, Minerals and Natural Resources**  
**Oil Conservation Division**  
**1220 S. St Francis Dr.**  
**Santa Fe, NM 87505**

Form C-101  
August 1, 2011  
Permit 163200

**APPLICATION FOR PERMIT TO DRILL, RE-ENTER, DEEPEN, PLUGBACK, OR ADD A ZONE**

1. Operator Name and Address APACHE CORP 303 Veterans Airpark Lane Midland, TX 79705		2. OGRID Number 873
4. Property Code 302708		3. API Number 30-025-41039
5. Property Name NORTH MONUMENT G/SA UNIT		6. Well No. 387

**7. Surface Location**

UL - Lot	Section	Township	Range	Lot Idn	Feet From	N/S Line	Feet From	E/W Line	County
O	19	19S	37E	O	10	S	1330	E	LEA

**8. Proposed Bottom Hole Location**

UL - Lot	Section	Township	Range	Lot Idn	Feet From	N/S Line	Feet From	E/W Line	County
O	19	19S	37E	O	10	S	1330	E	Lea

**9. Pool Information**

EUNICE MONUMENT;GRAYBURG-SAN ANDRES	23000
-------------------------------------	-------

**Additional Well Information**

11. Work Type New Well	12. Well Type OIL	13. Cable/Rotary	14. Lease Type State	15. Ground Level Elevation 3644
16. Multiple N	17. Proposed Depth 4200	18. Formation San Andres	19. Contractor	20. Spud Date
Depth to Ground water 13		Distance from nearest fresh water well > 1000		Distance to nearest surface water > 1000

**21. Proposed Casing and Cement Program**

Type	Hole Size	Casing Type	Casing Weight/ft	Setting Depth	Sacks of Cement	Estimated TOC
Surf	11	8.625	24	1299	450	
Prod	7.875	5.5	17	4100	600	

**Casing/Cement Program: Additional Comments**

--

**22. Proposed Blowout Prevention Program**

Type	Working Pressure	Test Pressure	Manufacturer
Hydril	3000	2000	

23. I hereby certify that the information given above is true and complete to the best of my knowledge and belief. I further certify I have complied with 19.15.14.9 (A) NMAC <input checked="" type="checkbox"/> and/or 19.15.14.9 (B) NMAC <input checked="" type="checkbox"/> if applicable. Signature:	<b>OIL CONSERVATION DIVISION</b> Approved By: Paul Kautz
Printed Name: Electronically filed by Bobby Smith	Title: Geologist
Title:	Approved Date: 3/5/2013    Expiration Date: 3/5/2015
Email Address: bobby.smith@apachecorp.com	
Date: 2/28/2013    Phone: 432-818-1020	Conditions of Approval Attached

## DISTRICT I

1625 N. French Dr., Hobbs, NM 88240  
Phone (575) 393-6101 Fax: (575) 393-0720

## DISTRICT II

811 S. First St., Artesia, NM 88210  
Phone (575) 746-1283 Fax: (575) 746-0720

## DISTRICT III

1000 Rio Brazos Rd., Aztec, NM 87410  
Phone (505) 334-6178 Fax: (505) 334-6170

## DISTRICT IV

1220 S. St. Francis Dr., Santa Fe, NM 87505  
Phone (505) 476-3460 Fax: (505) 476-3462

State of New Mexico  
Energy, Minerals and Natural Resources Department

## OIL CONSERVATION DIVISION

1220 South St. Francis Dr.  
Santa Fe, New Mexico 87505

Form C-102

Revised August 1, 2011

Submit one copy to appropriate  
District Office

## WELL LOCATION AND ACREAGE DEDICATION PLAT

☐ AMENDED REPORT

API Number <b>30-025-</b>	Pool Code <b>23000</b>	Pool Name <i>Eunice Monument; Grayburg San Andres</i>
Property Code <b>302708</b>	Property Name NMGSAU	Well Number <b>387</b>
GRID No. <b>873</b>	Operator Name APACHE CORPORATION	Elevation <b>3644'</b>

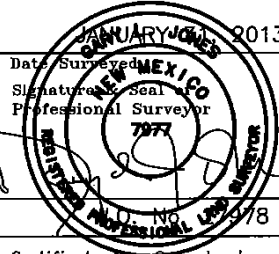
## Surface Location

UL or lot No.	Section	Township	Range	Lot Idn	Feet from the	North/South line	Feet from the	East/West line	County
<b>0</b>	<b>19</b>	<b>19 S</b>	<b>37 E</b>		<b>10</b>	<b>SOUTH</b>	<b>1330</b>	<b>EAST</b>	<b>LEA</b>

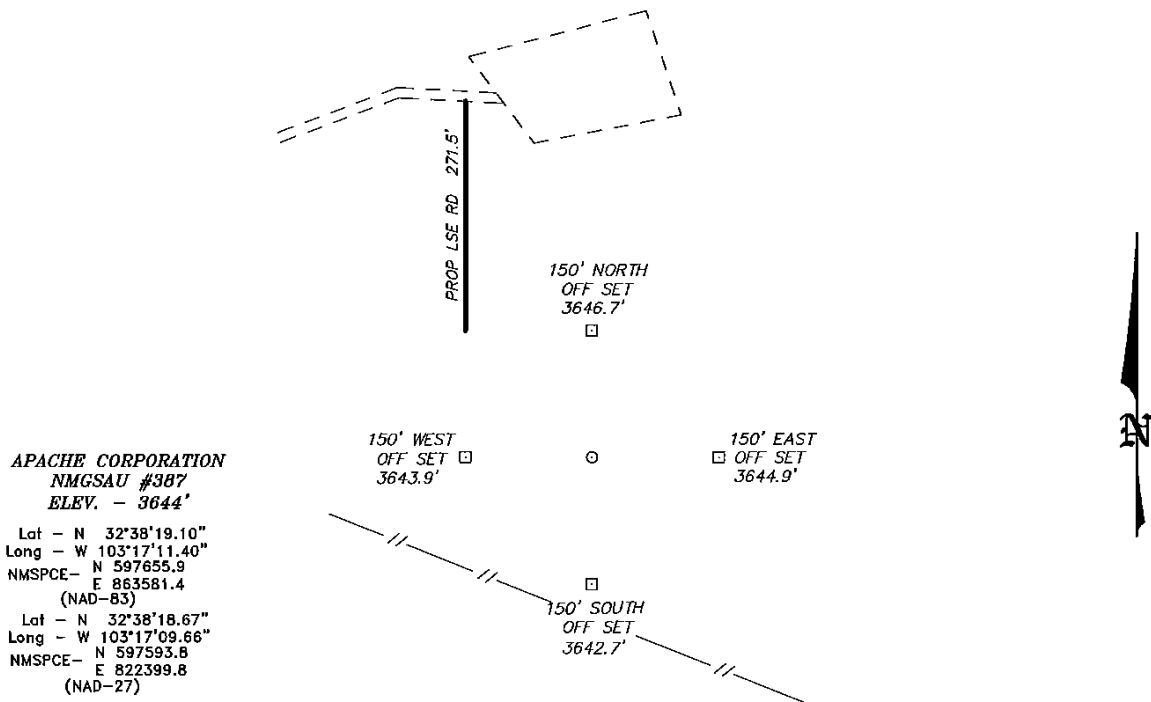
## Bottom Hole Location If Different From Surface

UL or lot No.	Section	Township	Range	Lot Idn	Feet from the	North/South line	Feet from the	East/West line	County
Dedicated Acres <b>40</b>	Joint or Infill	Consolidation Code	Order No.						

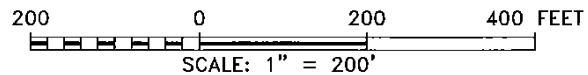
NO ALLOWABLE WILL BE ASSIGNED TO THIS COMPLETION UNTIL ALL INTERESTS HAVE BEEN CONSOLIDATED  
OR A NON-STANDARD UNIT HAS BEEN APPROVED BY THE DIVISION

<p>N: 602873.0 E: 816455.1 NAD 27</p> <p>LOT 1</p>	<p>N: 602865.8 E: 821047.0 NAD 27</p>	<p>N: 602859.8 E: 823682.9 NAD 27</p>	<p><b>OPERATOR CERTIFICATION</b></p> <p>I hereby certify that the information contained herein is true and complete to the best of my knowledge and belief, and that this organization either owns a working interest or unleased mineral interest in the land including the proposed bottom hole location or has a right to drill this well at this location pursuant to a contract with an owner of such a mineral or working interest, or to a voluntary pooling agreement or a compulsory pooling order heretofore entered by the division.</p> <p><i>Vicki Brown</i> 2/27/13 Signature Date <i>Vicki Brown</i> Printed Name <i>vicki.brown@apachecorp.com</i> Email Address</p> <p><b>SURVEYOR CERTIFICATION</b></p> <p>I hereby certify that the well location shown on this plat was plotted from field notes of actual surveys made by me or under my supervision, and that the same is true and correct to the best of my belief.</p> <p></p> <p>Date Surveyed: <b>JANUARY 01, 2013</b> Signature &amp; Seal of Professional Surveyor Certificate No. <b>Gary L. Jones 7977</b> <b>BASIN SURVEYS 27978</b></p>
<p>LOT 2</p>			
<p>N: 600225.7 E: 816482.2 NAD 27</p> <p>LOT 3</p>			
<p>LOT 4</p> <p><b>SURFACE LOCATION</b> Lat - N 32°38'19.10" Long - W 103°17'11.40" NMSPCE- N 597655.9           E 863581.4 (NAD-83) Lat - N 32°38'18.67" Long - W 103°17'09.66" NMSPCE- N 597593.8           E 822399.8 (NAD-27)</p> <p>N: 597578.7 E: 816504.8 NAD 27</p> <p>N: 597581.8 E: 821081.9 NAD 27</p> <p>10'</p> <p>1330'</p>			

SECTION 19, TOWNSHIP 19 SOUTH, RANGE 37 EAST, N.M.P.M.,  
LEA COUNTY, NEW MEXICO.



WELL IS LOCATED ±10 MILES SOUTHWEST OF HOBBS, NEW MEXICO.



Directions to Location:

FROM THE JUNCTION OF HWY 62-180 AND MADDOX,  
GO SOUTH 3.8 MILES TURNING EAST 0.5 MILES  
TURNING SOUTH AGAIN 0.3 MILES AND EAST 0.1  
MILES TO PROPOSED LEASE ROAD.

**BASIN SURVEYS** P.O. BOX 1786 - HOBBS, NEW MEXICO

W.O. Number: 27978 Drawn By: J. SMALL

Date: 02-11-2013 Disk: JMS 27978

**APACHE CORPORATION**

REF: NMGSAU #387 / WELL PAD TOPO

THE NMGSAU #387 LOCATED 10'  
FROM THE SOUTH LINE AND 1330' FROM THE EAST LINE OF  
SECTION 19, TOWNSHIP 19 SOUTH, RANGE 37 EAST,  
N.M.P.M., LEA COUNTY, NEW MEXICO.

Survey Date: 01-31-2013 Sheet 1 of 1 Sheets

## Permit Comments

**Operator:** APACHE CORP , 873

**Well:** NORTH MONUMENT G/SA UNIT #387

**API:** 30-025-41039

Created By	Comment	Comment Date
pkautz	Land s/S	2/28/2013
CHERRERA	OCD RECEIVED FORM C144 CLEZ. OCD PERMIT # P1-05841	3/5/2013

## Permit Conditions of Approval

**Operator:** APACHE CORP , 873

**Well:** NORTH MONUMENT G/SA UNIT #387

**API:** 30-025-41039

OCD Reviewer	Condition
pkautz	Once the well is spud, to prevent ground water contamination through whole or partial conduits from the surface, the operator shall drill without interruption through the fresh water zone or zones and shall immediately set in cement the water protection string
pkautz	In order to seal off protectable water, surface casing must be set 25' below top of Rustler Anhydrite.