

District I
1625 N. French Dr., Hobbs, NM 88240
Phone:(575) 393-6161 Fax:(575) 393-0720
District II
811 S. First St., Artesia, NM 88210
Phone:(575) 748-1283 Fax:(575) 748-9720
District III
1000 Rio Brazos Rd., Aztec, NM 87410
Phone:(505) 334-6178 Fax:(505) 334-6170
District IV
1220 S. St Francis Dr., Santa Fe, NM 87505
Phone:(505) 476-3470 Fax:(505) 476-3462

State of New Mexico
Energy, Minerals and Natural Resources
Oil Conservation Division
1220 S. St Francis Dr.
Santa Fe, NM 87505

Form C-101
August 1, 2011
Permit 163206

APPLICATION FOR PERMIT TO DRILL, RE-ENTER, DEEPEN, PLUGBACK, OR ADD A ZONE

1. Operator Name and Address APACHE CORP 303 Veterans Airpark Lane Midland, TX 79705		2. OGRID Number 873
4. Property Code 302708		3. API Number 30-025-41042
5. Property Name NORTH MONUMENT G/SA UNIT		6. Well No. 389

7. Surface Location

UL - Lot	Section	Township	Range	Lot Idn	Feet From	N/S Line	Feet From	E/W Line	County
C	30	19S	37E	C	1180	N	2475	W	LEA

8. Proposed Bottom Hole Location

UL - Lot	Section	Township	Range	Lot Idn	Feet From	N/S Line	Feet From	E/W Line	County
G	30	19S	37E	G	1330	N	2630	E	Lea

9. Pool Information

EUNICE MONUMENT;GRAYBURG-SAN ANDRES	23000
-------------------------------------	-------

Additional Well Information

11. Work Type New Well	12. Well Type OIL	13. Cable/Rotary	14. Lease Type State	15. Ground Level Elevation 3647
16. Multiple N	17. Proposed Depth 4100	18. Formation San Andres	19. Contractor	20. Spud Date
Depth to Ground water 13		Distance from nearest fresh water well > 1000		Distance to nearest surface water > 1000

21. Proposed Casing and Cement Program

Type	Hole Size	Casing Type	Casing Weight/ft	Setting Depth	Sacks of Cement	Estimated TOC
Surf	11	8.625	24	1283	440	
Prod	7.875	5.5	17	4050	590	

Casing/Cement Program: Additional Comments

--

22. Proposed Blowout Prevention Program

Type	Working Pressure	Test Pressure	Manufacturer
Hydril	3000	2000	

23. I hereby certify that the information given above is true and complete to the best of my knowledge and belief. I further certify I have complied with 19.15.14.9 (A) NMAC <input checked="" type="checkbox"/> and/or 19.15.14.9 (B) NMAC <input checked="" type="checkbox"/> if applicable. Signature: Printed Name: Electronically filed by Bobby Smith	OIL CONSERVATION DIVISION Approved By: Paul Kautz Title: Geologist Approved Date: 3/5/2013 Expiration Date: 3/5/2015 Email Address: bobby.smith@apachecorp.com Date: 2/28/2013 Phone: 432-818-1020 Conditions of Approval Attached
---	---

DISTRICT I
1625 N. French Dr., Hobbs, NM 88240
Phone (505) 393-6101 Fax: (505) 393-0720

DISTRICT II
811 S. First St., Artesia, NM 88210
Phone (505) 748-1283 Fax: (505) 748-8720

DISTRICT III
1000 Rio Brazos Rd., Aztec, NM 87410
Phone (505) 334-6178 Fax: (505) 334-6170

DISTRICT IV
1220 S. St. Francis Dr., Santa Fe, NM 87505
Phone (505) 478-3480 Fax: (505) 478-3482

State of New Mexico
Energy, Minerals and Natural Resources Department

OIL CONSERVATION DIVISION
1220 South St. Francis Dr.
Santa Fe, New Mexico 87505

Form C-102
Revised August 1, 2011

Submit one copy to appropriate
District Office

WELL LOCATION AND ACREAGE DEDICATION PLAT

☐ AMENDED REPORT

API Number 30-025 -	Pool Code 23000	Pool Name Eunice Monument - Grayburg San Andres
Property Code 302708	Property Name NMGSAU	Well Number 389
OGRID No. 873	Operator Name APACHE CORPORATION	Elevation 3647

Surface Location

UL or lot No.	Section	Township	Range	Lot Idn	Feet from the	North/South line	Feet from the	East/West line	County
C	30	19 S	37 E		1180	NORTH	2475	WEST	LEA

Bottom Hole Location If Different From Surface

UL or lot No.	Section	Township	Range	Lot Idn	Feet from the	North/South line	Feet from the	East/West line	County
G	30	19 S	37 E		1330	NORTH	2630	EAST	LEA

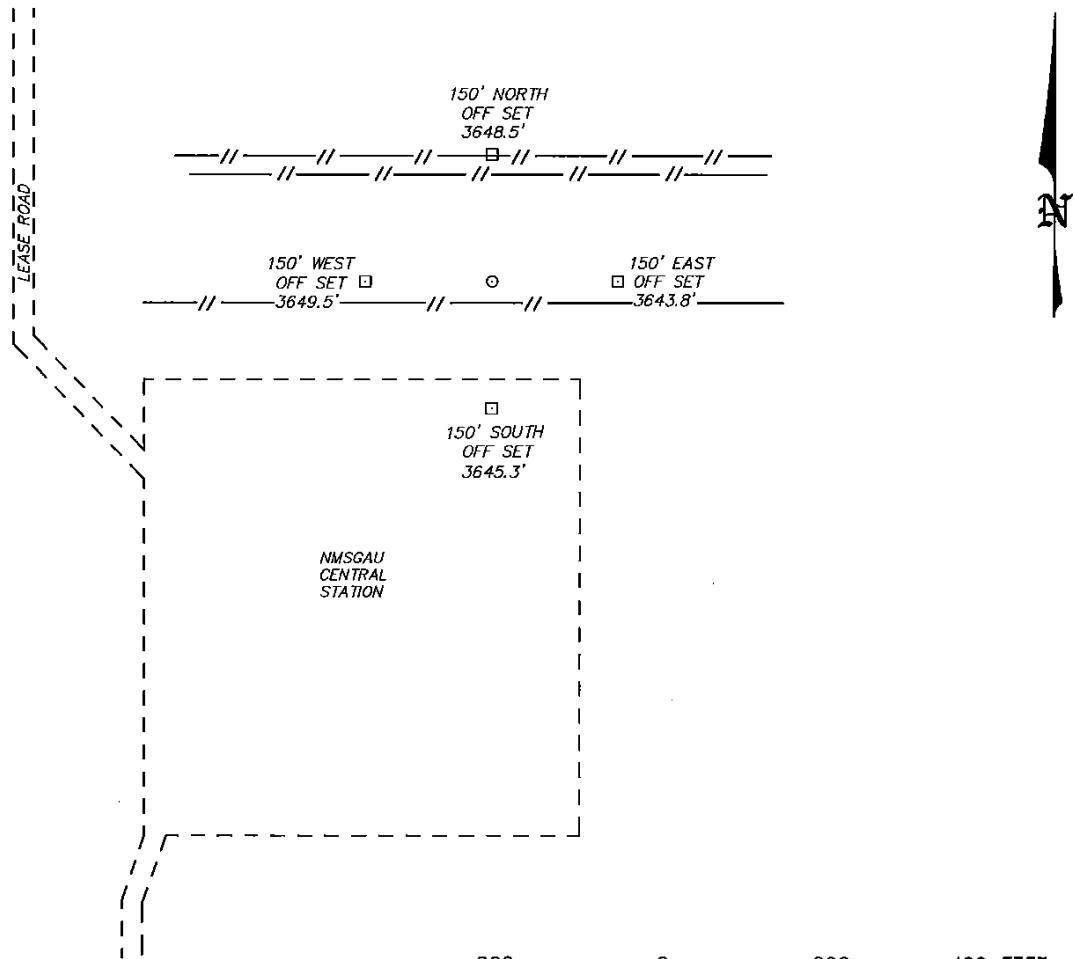
Dedicated Acres 40	Joint or Infill	Consolidation Code	Order No.
------------------------------	-----------------	--------------------	-----------

NO ALLOWABLE WILL BE ASSIGNED TO THIS COMPLETION UNTIL ALL INTERESTS HAVE BEEN CONSOLIDATED
OR A NON-STANDARD UNIT HAS BEEN APPROVED BY THE DIVISION

<p>N 597640.83 E 859685.89 (NAD-83)</p> <p>SURFACE LOCATION Lat - N 32°38'07.44" Long - W 103°17'28.02" NMSPCE- N 596463.94 E 862171.57 (NAD-83)</p>	<p>N 597643.89 E 862272.95 (NAD-83)</p> <p>PROPOSED BOTTOM HOLE LOCATION Lat - N 32°38'05.95" Long - W 103°17'26.59" NMSPCE- N 596314.16 E 862294.87 (NAD-83)</p>	<p>N 597647.80 E 864911.30 (NAD-83)</p>	<p>OPERATOR CERTIFICATION I hereby certify that the information contained herein is true and complete to the best of my knowledge and belief, and that this organization either owns a working interest or unleased mineral interest in the land including the proposed bottom hole location or has a right to drill this well at this location pursuant to a contract with an owner of such a mineral or working interest, or to a voluntary pooling agreement or a compulsory pooling order heretofore entered by the division.</p> <p><i>Vicki Brown</i> 2/27/13 Signature Date <i>Vicki Brown</i> Printed Name <i>vicki.brown@apachecorp.com</i> Email Address</p>
<p>N 592354.60 E 862544.07 (NAD-83)</p>	<p>N 592371.15 E 864963.67 (NAD-83)</p>	<p>SURVEYOR CERTIFICATION I hereby certify that the well location shown on this plat was plotted from field notes of actual surveys made by me or under my supervision, and that the same is true and correct to the best of my belief.</p> <p>FEBRUARY 15 2013 Date Surveyed Signature & Seal of Professional Surveyor 7977 Certificate No. Gary L. Jones 7977 BASIN SURVEYS 28206</p>	

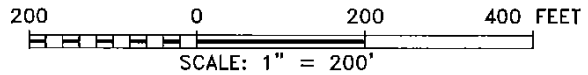
SECTION 30, TOWNSHIP 19 SOUTH, RANGE 37 EAST, N.M.P.M.,
LEA COUNTY, NEW MEXICO.

APACHE CORPORATION
NMGSAU #389
ELEV. - 3647
SURFACE LOCATION
Lat - N 32°38'07.44"
Long - W 103°17'28.02"
NMSPCE- N 595463.94
E 882171.57
(NAD-83)



DRIVING DIRECTIONS

FROM MADDOX AND PEARL VALLEY GO EAST .5 MILES TURN NORTH GO .5
MILES TO PROPOSED LOCATION.



BASIN SURVEYS P.O. BOX 1786 - HOBBS, NEW MEXICO

W.O. Number: 28206 Drawn By: D. JONES

Date: 02-20-2013 Disk: DAJ 28206

APACHE CORPORATION

REF: NMGSAU #389 / WELL PAD TOPO

THE NMGSAU #389 LOCATED 1180'

FROM THE NORTH LINE AND 2475' FROM THE WEST LINE OF

SECTION 30, TOWNSHIP 19 SOUTH, RANGE 37 EAST,

N.M.P.M., LEA COUNTY, NEW MEXICO.

Survey Date: 02-18-2013 Sheet 1 of 1 Sheets

Permit Comments

Operator: APACHE CORP , 873

Well: NORTH MONUMENT G/SA UNIT #389

API: 30-025-41042

Created By	Comment	Comment Date
pkautz	Land s/S	2/28/2013
CHERRERA	OCD RECEIVED FORM C144 CLEZ. OCD PERMIT # P1-05843	3/5/2013

Permit Conditions of Approval

Operator: APACHE CORP , 873

Well: NORTH MONUMENT G/SA UNIT #389

API: 30-025-41042

OCD Reviewer	Condition
pkautz	Once the well is spud, to prevent ground water contamination through whole or partial conduits from the surface, the operator shall drill without interruption through the fresh water zone or zones and shall immediately set in cement the water protection string
pkautz	In order to seal off protectable water, surface casing must be set 25' below top of Rustler Anhydrite