

District I
1625 N. French Dr., Hobbs, NM 88240
Phone:(575) 393-6161 Fax:(575) 393-0720
District II
811 S. First St., Artesia, NM 88210
Phone:(575) 748-1283 Fax:(575) 748-9720
District III
1000 Rio Brazos Rd., Aztec, NM 87410
Phone:(505) 334-6178 Fax:(505) 334-6170
District IV
1220 S. St Francis Dr., Santa Fe, NM 87505
Phone:(505) 476-3470 Fax:(505) 476-3462

State of New Mexico
Energy, Minerals and Natural Resources
Oil Conservation Division
1220 S. St Francis Dr.
Santa Fe, NM 87505

Form C-101
August 1, 2011
Permit 170470

APPLICATION FOR PERMIT TO DRILL, RE-ENTER, DEEPEN, PLUGBACK, OR ADD A ZONE

1. Operator Name and Address APACHE CORP 303 Veterans Airpark Lane Midland, TX 79705		2. OGRID Number 873
4. Property Code 22503		3. API Number 30-025-41279
5. Property Name NORTHEAST DRINKARD UNIT		6. Well No. 848

7. Surface Location

UL - Lot	Section	Township	Range	Lot Idn	Feet From	N/S Line	Feet From	E/W Line	County
E	23	21S	37E	E	2450	N	615	W	LEA

8. Proposed Bottom Hole Location

UL - Lot	Section	Township	Range	Lot Idn	Feet From	N/S Line	Feet From	E/W Line	County
E	23	21S	37E	E	2450	N	615	W	Lea

9. Pool Information

EUNICE,BLI-TU-DR, NORTH	22900
-------------------------	-------

Additional Well Information

11. Work Type New Well	12. Well Type OIL	13. Cable/Rotary	14. Lease Type Private	15. Ground Level Elevation 3404
16. Multiple N	17. Proposed Depth 7150	18. Formation Drinkard	19. Contractor	20. Spud Date
Depth to Ground water		Distance from nearest fresh water well		Distance to nearest surface water

21. Proposed Casing and Cement Program

Type	Hole Size	Casing Type	Casing Weight/ft	Setting Depth	Sacks of Cement	Estimated TOC
Surf	11	8.625	24	1250	430	
Prod	7.875	5.5	17	6850	1030	

Casing/Cement Program: Additional Comments

--

22. Proposed Blowout Prevention Program

Type	Working Pressure	Test Pressure	Manufacturer
Hydril	3000	2000	

23. I hereby certify that the information given above is true and complete to the best of my knowledge and belief. I further certify I have complied with 19.15.14.9 (A) NMAC <input checked="" type="checkbox"/> and/or 19.15.14.9 (B) NMAC <input checked="" type="checkbox"/> if applicable. Signature: Printed Name: Electronically filed by Bobby Smith Title: Email Address: bobby.smith@apachecorp.com Date: 7/23/2013	<div style="text-align: center;">OIL CONSERVATION DIVISION</div> Approved By: Paul Kautz Title: Geologist Approved Date: 7/24/2013 Expiration Date: 7/24/2015 Conditions of Approval Attached
Phone: 432-818-1020	

DISTRICT I
1625 N. French Dr., Hobbs, NM 88240
Phone (575) 393-6161 Fax: (575) 393-9720

DISTRICT II
811 S. First St., Artesia, NM 88210
Phone (575) 745-1263 Fax: (575) 745-9720

DISTRICT III
1000 Rio Brazos Rd., Aztec, NM 87410
Phone (505) 334-6178 Fax: (505) 334-6170

DISTRICT IV
1220 S. St. Francis Dr., Santa Fe, NM 87505
Phone (505) 476-3460 Fax: (505) 476-3462

State of New Mexico
Energy, Minerals and Natural Resources Department

Form C-102
Revised August 1, 2011

Submit one copy to appropriate
District Office

OIL CONSERVATION DIVISION
1220 South St. Francis Dr.
Santa Fe, New Mexico 87505

WELL LOCATION AND ACREAGE DEDICATION PLAT

☐ AMENDED REPORT

API Number 30-025-	Pool Code 22900	Pool Name Eunice; BLI-TU-DR, North
Property Code	Property Name NORTHEAST DRINKARD UNIT	Well Number 848
GRID No. 873	Operator Name APACHE CORPORATION	Elevation 3404

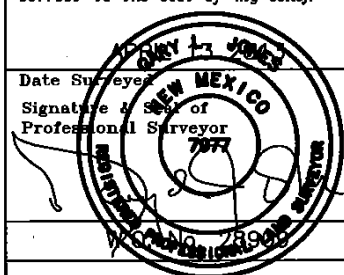
Surface Location

UL or lot No.	Section	Township	Range	Lot Idn	Feet from the	North/South line	Feet from the	East/West line	County
E	23	21 S	37 E		2450	NORTH	615	WEST	LEA

Bottom Hole Location If Different From Surface

UL or lot No.	Section	Township	Range	Lot Idn	Feet from the	North/South line	Feet from the	East/West line	County
Dedicated Acres		Joint or Infill		Consolidation Code		Order No.			

NO ALLOWABLE WILL BE ASSIGNED TO THIS COMPLETION UNTIL ALL INTERESTS HAVE BEEN CONSOLIDATED
OR A NON-STANDARD UNIT HAS BEEN APPROVED BY THE DIVISION

<p>N 537379.31 E 908642.53 (NAD-83)</p> <p>2450'</p> <p>615'</p>	<p>SURFACE LOCATION Lat - N 32°27'53.83" Long - W 103°08'25.20" NMSPC- N 534937.38 E 909285.47 (NAD-83) Lat - N 32°27'52.40" Long - W 103°08'23.51" NMSPC- N 534877.89 E 868101.14 (NAD-27)</p> <p>32.464556 103.139864</p>	<p>N 537445.50 E 913920.09 (NAD-83)</p>	<p>OPERATOR CERTIFICATION I hereby certify that the information contained herein is true and complete to the best of my knowledge and belief, and that this organization either owns a working interest or unleased mineral interest in the land including the proposed bottom hole location or has a right to drill this well at this location pursuant to a contract with an owner of such a mineral or working interest, or to a voluntary pooling agreement or a compulsory pooling order heretofore entered by the division.</p> <p><i>Michelle Cooper</i> 7-22-13 Signature Date <i>Michelle Cooper</i> Printed Name <i>michelle.cooper@apachecorp.com</i> Email Address</p> <p>SURVEYOR CERTIFICATION I hereby certify that the well location shown on this plat was plotted from field notes of actual surveys made by me or under my supervision, and that the same is true and correct to the best of my belief.</p> <p>Date Surveyed Signature & Seal of Professional Surveyor  Certificate No. Gary L. Jones 7977 BASIN SURVEYS 28909</p>
--	--	---	--

SECTION 23, TOWNSHIP 21 SOUTH, RANGE 37 EAST, N.M.P.M.,
LEA COUNTY, NEW MEXICO.

APACHE CORPORATION
NORTHEAST DRINKARD UNIT #848

ELEV. - 3404

SURFACE LOCATION

Lat - N 32°27'53.83"

Long - W 103°08'25.20"

NMSPCE- N 534937.38

E 909285.47

(NAD-83)

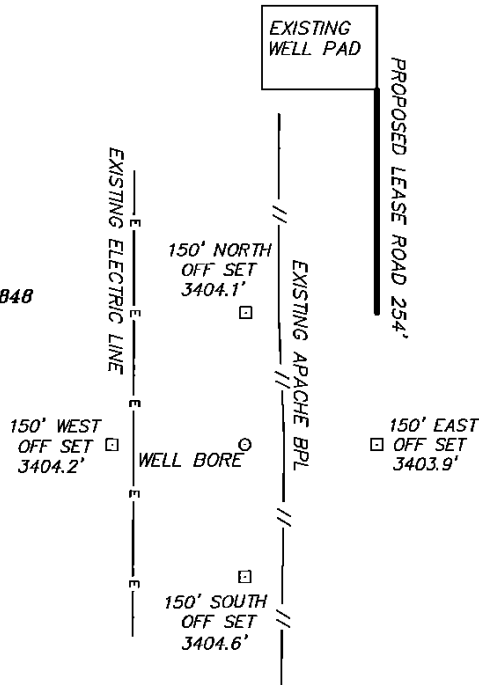
Lat - N 32°27'52.40"

Long - W 103°08'23.51"

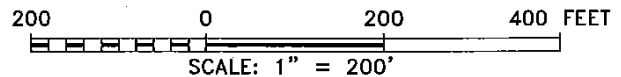
NMSPCE- N 534877.89

E 868101.14

(NAD-27)



NOTE: WELL IS LOCATED ABOUT 2 MILES NORTHEAST OF EUNICE.



Directions to Location:

FROM ST 18 AND JONES CITY ROAD GO WEST ON
JONES CITY .8 MILES THEN GO SOUTH .4 MILES
THEN TURN EAST GO .2 MILES TO BEGIN ROAD ON
SOUTH.

BASIN SURVEYS P.O. BOX 1786-HOBBS, NEW MEXICO

W.O. Number: 28909 Drawn By: D. JONES

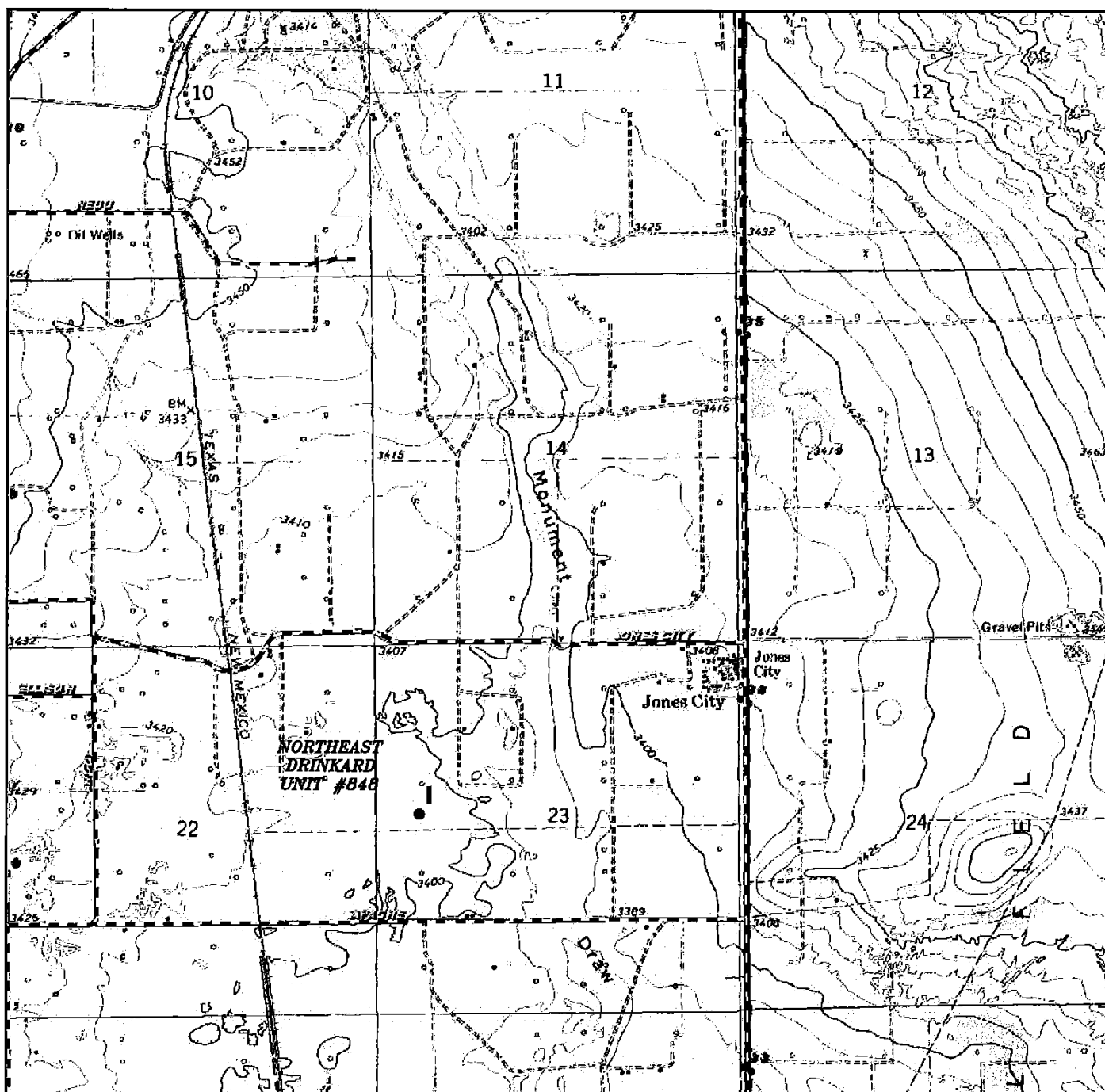
Date: 07-02-2013 Disk: DAJ 28909

APACHE CORPORATION

REF: NORTHEAST DRINKARD UNIT #848/ WELL PAD TOPO

THE NORTHEAST DRINKARD UNIT #848 LOCATED 2450'
FROM THE NORTH LINE AND 615' FROM THE WEST LINE OF
SECTION 23, TOWNSHIP 21 SOUTH, RANGE 37 EAST,
N.M.P.M., LEA COUNTY, NEW MEXICO.

Survey Date: 06-28-2013 Sheet 1 of 1 Sheets



NORTHEAST DRINKARD UNIT #848
 Located 2450' FNL and 615' FWL
 Section 23, Township 21 South, Range 37 East,
 N.M.P.M., LEA County, New Mexico.

basin
surveys

focused on excellence
 in the oilfield

P.O. Box 1786
 1120 N. West County Rd.
 Hobbs, New Mexico 88241
 (575) 393-7316 - Office
 (575) 392-2206 - Fax
 basin-surveys.com

W.O. Number: DAJ 28909

Survey Date: 06-28-2013

Scale: 1" = 2000'

Date: 07-02-2013

APACHE
CORPORATION

Permit Comments

Operator: APACHE CORP , 873

Well: NORTHEAST DRINKARD UNIT #848

API: 30-025-41279

Created By	Comment	Comment Date
MICHELLEC	Closed Loop System will be used	7/23/2013
DMULL	P/P	7/24/2013

Permit Conditions of Approval

Operator: APACHE CORP , 873

Well: NORTHEAST DRINKARD UNIT #848

API: 30-025-41279

OCD Reviewer	Condition
DMULL	Once the well is spud, to prevent ground water contamination through whole or partial conduits from the surface, the operator shall drill without interruption through the fresh water zone or zones and shall immediately set in cement the water protection string
pkautz	In order to seal off protectable water, surface casing must be set 25' below top of Rustler Anhydrite