

District I
1625 N. French Dr., Hobbs, NM 88240
Phone:(575) 393-6161 Fax:(575) 393-0720
District II
811 S. First St., Artesia, NM 88210
Phone:(575) 748-1283 Fax:(575) 748-9720
District III
1000 Rio Brazos Rd., Aztec, NM 87410
Phone:(505) 334-6178 Fax:(505) 334-6170
District IV
1220 S. St Francis Dr., Santa Fe, NM 87505
Phone:(505) 476-3470 Fax:(505) 476-3462

State of New Mexico
Energy, Minerals and Natural Resources
Oil Conservation Division
1220 S. St Francis Dr.
Santa Fe, NM 87505

Form C-101
Revised July 18, 2013
Permit 167874

APPLICATION FOR PERMIT TO DRILL, RE-ENTER, DEEPEN, PLUGBACK, OR ADD A ZONE

1. Operator Name and Address APACHE CORP 303 Veterans Airpark Lane Midland, TX 79705		2. OGRID Number 873
4. Property Code 23113		3. API Number 30-025-41375
5. Property Name STATE C TRACT 12		6. Well No. 001H

7. Surface Location

UL - Lot	Section	Township	Range	Lot Idn	Feet From	N/S Line	Feet From	E/W Line	County
D	16	21S	37E	D	330	N	330	W	LEA

8. Proposed Bottom Hole Location

UL - Lot	Section	Township	Range	Lot Idn	Feet From	N/S Line	Feet From	E/W Line	County
M	16	21S	37E	M	330	S	330	W	Lea

9. Pool Information

WANTZ, ABO	62700
------------	-------

Additional Well Information

11. Work Type New Well	12. Well Type OIL	13. Cable/Rotary	14. Lease Type State	15. Ground Level Elevation 3494
16. Multiple N	17. Proposed Depth 11370	18. Formation Abo	19. Contractor	20. Spud Date
Depth to Ground water		Distance from nearest fresh water well		Distance to nearest surface water

☒ We will be using a closed-loop system in lieu of lined pits

21. Proposed Casing and Cement Program

Type	Hole Size	Casing Type	Casing Weight/ft	Setting Depth	Sacks of Cement	Estimated TOC
Surf	17.5	13.375	48	1425	1050	
Int1	11	8.625	32	4550	1250	
Prod	7.875	5.5	20	11370	1800	

Casing/Cement Program: Additional Comments

--

22. Proposed Blowout Prevention Program

Type	Working Pressure	Test Pressure	Manufacturer
Hydril	3000	2000	

23. I hereby certify that the information given above is true and complete to the best of my knowledge and belief. I further certify I have complied with 19.15.14.9 (A) NMAC <input checked="" type="checkbox"/> and/or 19.15.14.9 (B) NMAC <input checked="" type="checkbox"/> , if applicable. Signature:	OIL CONSERVATION DIVISION Approved By: Paul Kautz
Printed Name: Electronically filed by Bobby Smith	Title: Geologist
Title:	Approved Date: 9/5/2013 Expiration Date: 9/5/2015
Email Address: bobby.smith@apachecorp.com	
Date: 9/5/2013 Phone: 432-818-1020	Conditions of Approval Attached

DISTRICT I
1625 N. French Dr., Hobbs, NM 88240
Phone: (575) 393-6161 Fax: (575) 393-0720
DISTRICT II
811 S. First St., Artesia, NM 88210
Phone: (575) 748-1283 Fax: (575) 748-9720
DISTRICT III
1000 Rio Bruzos Road, Aztec, NM 87410
Phone: (505) 334-6178 Fax: (505) 334-6170
DISTRICT IV
1220 S. St. Francis Dr., Santa Fe, NM 87505
Phone: (505) 476-3460 Fax: (505) 476-3462

State of New Mexico
Energy, Minerals & Natural Resources Department
OIL CONSERVATION DIVISION
1220 South St. Francis Dr.
Santa Fe, New Mexico 87505

Form C-102
Revised August 1, 2011
Submit one copy to appropriate
District Office

AMENDED REPORT

WELL LOCATION AND ACREAGE DEDICATION PLAT

API Number 30-025-	Pool Code 62700	Pool Name Wantz Abo
Property Code	Property Name STATE C TRACT 12 COM	Well Number 1H
OGRID No. 873	Operator Name APACHE CORPORATION	Elevation 3494'

Surface Location

UL or lot No.	Section	Township	Range	Lot Idn	Feet from the	North/South line	Feet from the	East/West line	County
D	16	21-S	37-E		330	NORTH	330	WEST	LEA

Bottom Hole Location If Different From Surface

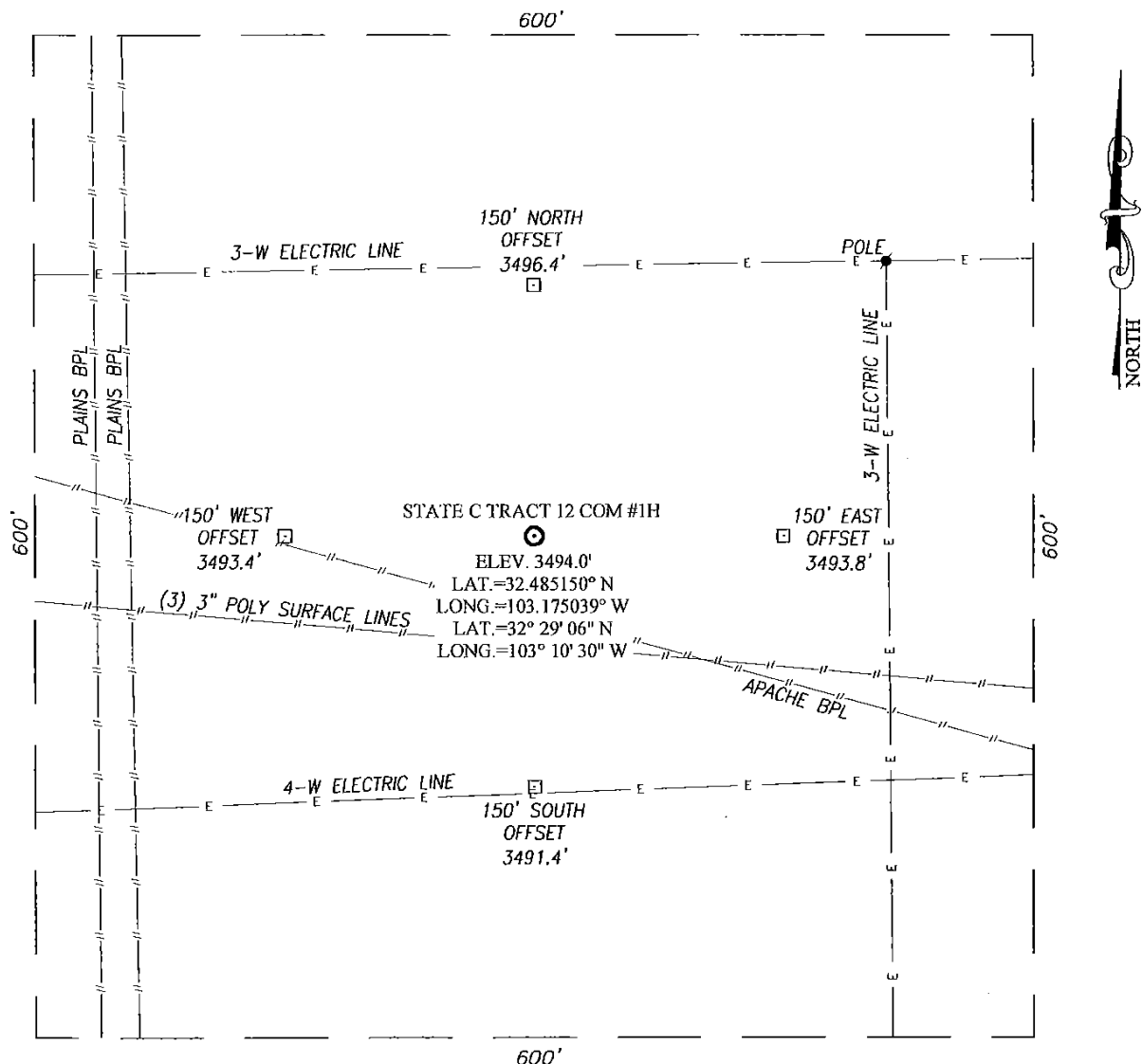
UL or lot No.	Section	Township	Range	Lot Idn	Feet from the	North/South line	Feet from the	East/West line	County
M	16	21-S	37-E		330	SOUTH	330	WEST	LEA

Dedicated Acres	Joint or Infill	Consolidation Code	Order No.

NO ALLOWABLE WILL BE ASSIGNED TO THIS COMPLETION UNTIL ALL INTERESTS HAVE BEEN CONSOLIDATED OR A NON-STANDARD UNIT HAS BEEN APPROVED BY THE DIVISION

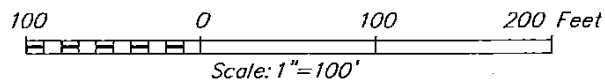
	<p>GEODETIC COORDINATES NAD 27 NME</p> <p>SURFACE LOCATION Y= 542149.9 N X= 857172.1 E</p> <p>LAT.=32.485150° N LONG.=103.175039° W</p> <p>LAT.=32° 29' 06" N LONG.=103° 10' 30" W</p>	<p>OPERATOR CERTIFICATION</p> <p>I hereby certify that the information herein is true and complete to the best of my knowledge and belief, and that this organization either owns a working interest or unleased mineral interest in the land including the proposed bottom hole location or has a right to drill this well at this location pursuant to a contract with an owner of such mineral or working interest, or to a voluntary pooling agreement or a compulsory pooling order heretofore entered by the division.</p> <p><i>Michelle Cooper</i> 7-2-13 Signature Date</p> <p><i>Michelle Cooper</i> Printed Name</p> <p><i>michelle.cooper@apachecorp.com</i> E-mail Address</p>	
	<p>BOTTOM HOLE LOCATION Y= 537528.7 N X= 857213.4 E</p>	<p>SURVEYOR CERTIFICATION</p> <p>I hereby certify that the well location shown on this plat was plotted from field notes of actual surveys made by me or under my supervision, and that the same is true and correct to the best of my belief.</p> <p>APRIL 15, 2013</p>	<p>Date of Survey</p> <p>Signature & Seal of Professional Surveyor:</p> <p></p> <p><i>Ronald J. Eidson</i> 05/07/2013 Certificate Number Date</p> <p>Ronald J. Eidson 12641 3239</p>
	<p>CORNER COORDINATES TABLE</p> <p>A - Y= 542476.6 N, X= 856839.1 E B - Y= 537195.3 N, X= 856886.4 E C - Y= 542489.7 N, X= 858160.0 E D - Y= 537209.4 N, X= 858214.3 E</p>	<p>DSS JWSC W.O.: 13.11.0378</p>	

SECTION 16, TOWNSHIP 21 SOUTH, RANGE 37 EAST, N.M.P.M.
LEA COUNTY **NEW MEXICO**



DIRECTIONS TO LOCATION

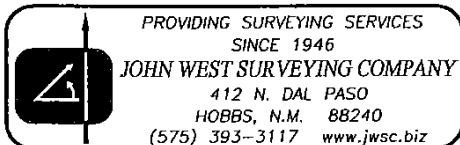
FROM THE INTERSECTION OF STATE HIGHWAY 207 AND CO. RD. E-49 (HILL ROAD), GO NORTH ON HILL ROAD APPROX. 1.5 MILES. TURN LEFT AND GO SOUTH ON CO. RD. E-33 (TURNER ST.) APPROX. 0.5 MILES. TURN LEFT ON LEASE ROAD AND GO EAST APPROX. 0.1 MILE TO THE EXISTING LOCKHART A-17 #9 WELL (APACHE CORPORATION). THIS LOCATION STAKE IS EAST APPROX. 315 FEET.



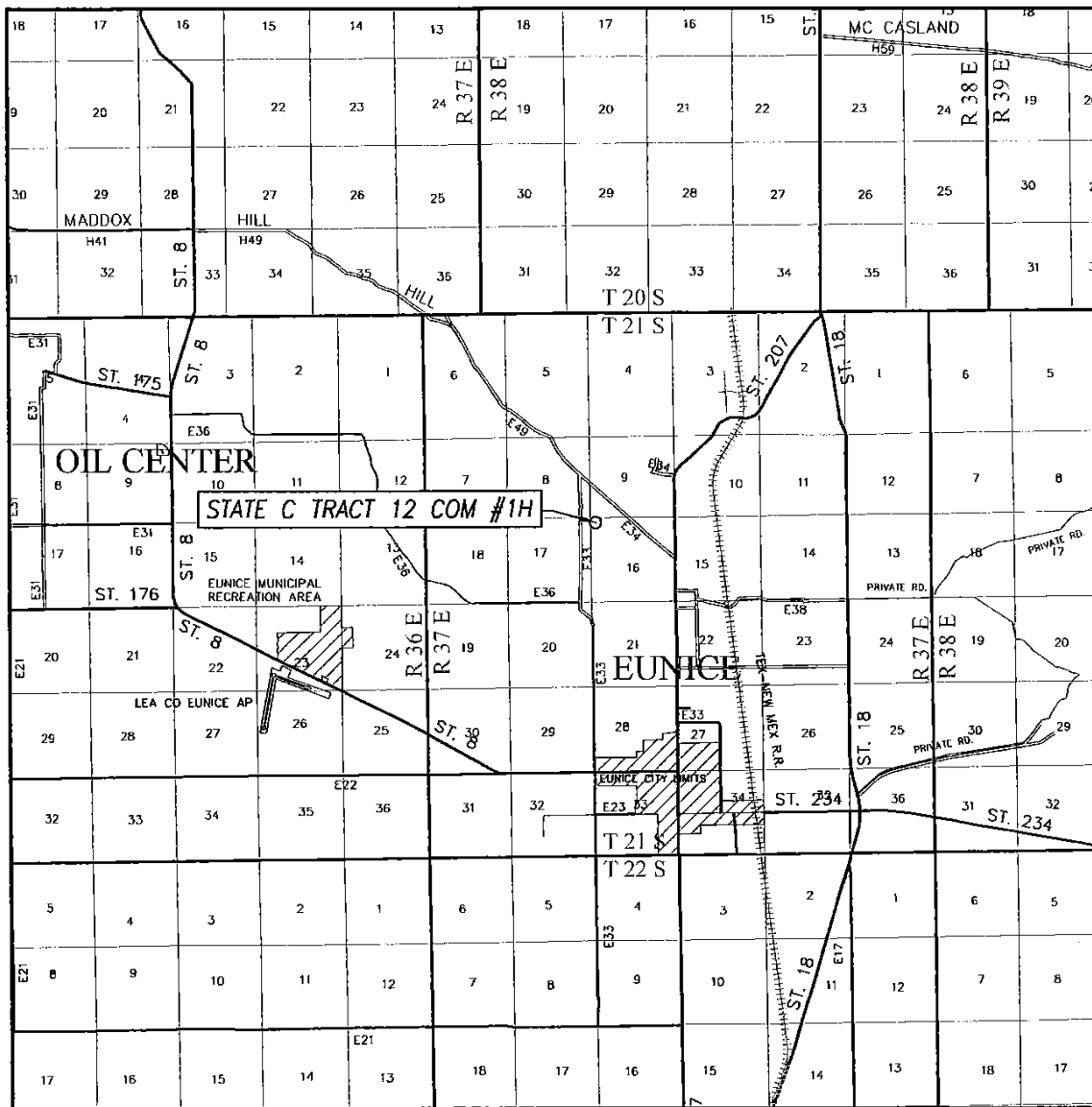
APACHE CORPORATION

STATE C TRACT 12 COM #1H WELL
LOCATED 330 FEET FROM THE NORTH LINE
AND 330 FEET FROM THE WEST LINE OF SECTION 16,
TOWNSHIP 21 SOUTH, RANGE 37 EAST, N.M.P.M.,
LEA COUNTY, NEW MEXICO

Survey Date: 04/15/13	CAD Date: 05/07/13	Drawn By: DSS
W.O. No.: 13110378	Rev: .	Rel. W.O.: Sheet 1 of 1




VICINITY MAP



SCALE: 1" = 2 MILES

SEC. 16 TWP. 21-S RGE. 37-E
 SURVEY N.M.P.M.
 COUNTY LEA STATE NEW MEXICO
 DESCRIPTION 330' FNL & 330' FWL
 ELEVATION 3494'
 OPERATOR APACHE CORPORATION
 LEASE STATE C TRACT 12 COM



PROVIDING SURVEYING SERVICES
 SINCE 1946
JOHN WEST SURVEYING COMPANY
 412 N. DAL PASO
 HOBBS, N.M. 88240
 (575) 393-3117 www.jwsc.biz

Permit Comments

Operator: APACHE CORP , 873

Well: STATE C TRACT 12 #001H

API: 30-025-41375

Created By	Comment	Comment Date
MICHELLEC	Closed Loop System will be used	7/23/2013
MICHELLEC	Closed Loop System will be used	9/5/2013
pkautz	land s/S	9/5/2013

Permit Conditions of Approval

Operator: APACHE CORP , 873

Well: STATE C TRACT 12 #001H

API: 30-025-41375

OCD Reviewer	Condition
pkautz	Once the well is spud, to prevent ground water contamination through whole or partial conduits from the surface, the operator shall drill without interruption through the fresh water zone or zones and shall immediately set in cement the water protection string
pkautz	Surface casing must be set 25' below top of Rustler Anhydrite in order to seal off protectable water