

**District I**  
1625 N. French Dr., Hobbs, NM 88240  
Phone:(575) 393-8181 Fax:(575) 393-0720

**District II**  
811 S. First St., Artesia, NM 88210  
Phone:(575) 748-1283 Fax:(575) 748-9720

**District III**  
1000 Rio Brazos Rd., Aztec, NM 87410  
Phone:(505) 334-6178 Fax:(505) 334-6170

**District IV**  
1220 S. St Francis Dr., Santa Fe, NM 87505  
Phone:(505) 476-3470 Fax:(505) 476-3462

**State of New Mexico**  
**Energy, Minerals and Natural Resources**  
**Oil Conservation Division**  
**1220 S. St Francis Dr.**  
**Santa Fe, NM 87505**

Form C-101  
August 1, 2011  
Permit 184408

**APPLICATION FOR PERMIT TO DRILL, RE-ENTER, DEEPEN, PLUGBACK, OR ADD A ZONE**

1. Operator Name and Address APACHE CORP 303 Veterans Airpark Lane Midland, TX 79705		2. OGRID Number 873
4. Property Code 306616		3. API Number 30-025-41779
5. Property Name MCDONALD STATE AC 2		6. Well No. 040

**7. Surface Location**

UL - Lot I	Section 13	Township 22S	Range 36E	Lot Idn	Feet From 1650	N/S Line S	Feet From 950	E/W Line E	County Lea
---------------	---------------	-----------------	--------------	---------	-------------------	---------------	------------------	---------------	---------------

**8. Proposed Bottom Hole Location**

UL - Lot I	Section 13	Township 22S	Range 36E	Lot Idn I	Feet From 1650	N/S Line S	Feet From 950	E/W Line E	County Lea
---------------	---------------	-----------------	--------------	--------------	-------------------	---------------	------------------	---------------	---------------

**9. Pool Information**

BLINEBRY OIL AND GAS (OIL)	6660
TUBB OIL AND GAS (OIL)	60240
DRINKARD	19190

**Additional Well Information**

11. Work Type New Well	12. Well Type OIL	13. Cable/Rotary	14. Lease Type State	15. Ground Level Elevation 3463
16. Multiple Y	17. Proposed Depth 7600	18. Formation Drinkard	19. Contractor	20. Spud Date
Depth to Ground water		Distance from nearest fresh water well		Distance to nearest surface water

☒ We will be using a closed-loop system in lieu of lined pits

**21. Proposed Casing and Cement Program**

Type	Hole Size	Casing Size	Casing Weight/ft	Setting Depth	Sacks of Cement	Estimated TOC
Surf	11	8.625	24	1203	420	0
Prod	7.875	5.5	17	7600	1040	0

**Casing/Cement Program: Additional Comments**

--

**22. Proposed Blowout Prevention Program**

Type	Working Pressure	Test Pressure	Manufacturer
Hydril	3000	2000	

23. I hereby certify that the information given above is true and complete to the best of my knowledge and belief. I further certify I have complied with 19.15.14.9 (A) NMAC <input checked="" type="checkbox"/> and/or 19.15.14.9 (B) NMAC <input checked="" type="checkbox"/> , if applicable.  Signature: _____ Printed Name:     Electronically filed by Bobby Smith Title: _____ Email Address:   bobby.smith@apachecorp.com Date:             4/16/2014     Phone: 432-818-1020	<b>OIL CONSERVATION DIVISION</b>  Approved By:     Paul Kautz Title:             Geologist Approved Date:   4/16/2014     Expiration Date: 4/16/2016 Conditions of Approval Attached
---	---

DISTRICT I  
1625 N. French Dr., Hobbs, NM 88240  
Phone: (575) 393-6161 Fax: (575) 393-0720

DISTRICT II  
811 S. First St., Artesia, NM 88210  
Phone: (575) 748-1283 Fax: (575) 748-9720

DISTRICT III  
1000 Rio Brazos Road, Aztec, NM 87410  
Phone: (505) 334-6178 Fax: (505) 334-6170

DISTRICT IV  
1220 S. St. Francis Dr., Santa Fe, NM 87505  
Phone: (505) 476-3460 Fax: (505) 476-3462

State of New Mexico  
Energy, Minerals & Natural Resources Department  
OIL CONSERVATION DIVISION  
1220 South St. Francis Dr.  
Santa Fe, New Mexico 87505

Form C-102  
Revised August 1, 2011  
Submit one copy to appropriate  
District Office

☐ AMENDED REPORT

WELL LOCATION AND ACREAGE DEDICATION PLAT

API Number		Pool Code	Pool Name
Property Code	Property Name McDONALD STATE A/C 2		Well Number 40
OGRID No.	Operator Name APACHE CORPORATION		Elevation 3463'

Surface Location

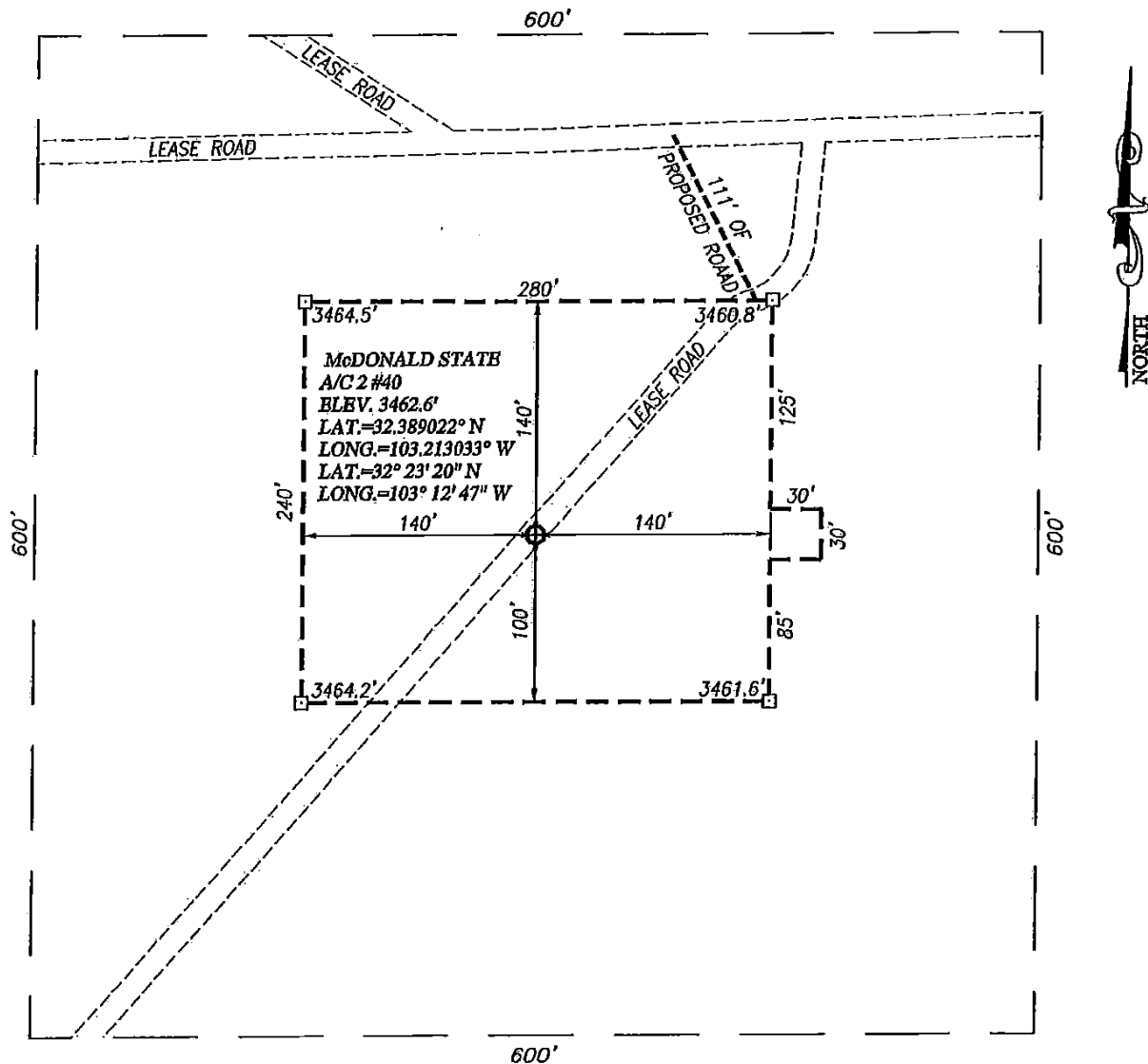
UL or lot No. I	Section 13	Township 22-S	Range 36-E	Lot Idn	Feet from the 1650	North/South line SOUTH	Feet from the 950	East/West line EAST	County LEA
--------------------	---------------	------------------	---------------	---------	-----------------------	---------------------------	----------------------	------------------------	---------------

Bottom Hole Location If Different From Surface

UL or lot No.	Section	Township	Range	Lot Idn	Feet from the	North/South line	Feet from the	East/West line	County
Dedicated Acres		Joint or Infill		Consolidation Code		Order No.			

NO ALLOWABLE WILL BE ASSIGNED TO THIS COMPLETION UNTIL ALL INTERESTS HAVE BEEN CONSOLIDATED OR A NON-STANDARD UNIT HAS BEEN APPROVED BY THE DIVISION

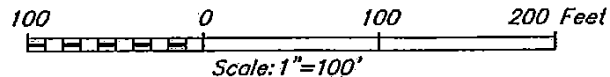
<p>GEODETIC COORDINATES NAD 27 NME</p> <p>SURFACE LOCATION Y=507052.3 N X=845822.3 E</p> <p>LAT.=32.389022° N LONG.=103.213033° W</p> <p>LAT.=32° 23' 20" N LONG.=103° 12' 47" W</p>		<p><b>OPERATOR CERTIFICATION</b></p> <p>I hereby certify that the information herein is true and complete to the best of my knowledge and belief, and that this organization either owns a working interest or unleased mineral interest in the land including the proposed bottom hole location or has a right to drill this well at this location pursuant to a contract with an owner of such mineral or working interest, or to a voluntary pooling agreement or a compulsory pooling order heretofore entered by the division.</p> <p><i>Michelle Cooper</i> 4-9-14 Signature Date</p> <p><i>Michelle Cooper</i> Printed Name</p> <p><i>michelle.cooper@apachecorp.com</i> E-mail Address</p>
	<p><b>SURVEYOR CERTIFICATION</b></p> <p>I hereby certify that the well location shown on this plat was plotted from field notes of actual surveys made by me or under my supervision, and that the same is true and correct to the best of my belief.</p> <p>MARCH 17, 2014 Date of Survey</p> <p><i>Ronald J. Eidson</i> Signature &amp; Seal of Professional Surveyor</p> <p> Certificate Number 12641 Ronald J. Eidson 3239</p> <p>DSS JWSC W.O.: 14.11.0288</p>	



NOTE:  
1) SEE "LOCATION VERIFICATION MAP"  
FOR PROPOSED ROAD LOCATION.

DIRECTIONS TO McDonald STATE A/C 2 #40:

FROM THE INTERSECTION OF ST. HWY. #207 AND CO. RD. #E21  
(DELAWARE BASIN ROAD), GO WEST ON DELAWARE BASIN ROAD  
APPROX. 3.8 MILES. TURN LEFT AND GO SOUTHEAST APPROX.  
0.9 MILES. TURN RIGHT AND FOLLOW PROPOSED ROAD SURVEY  
STAKES SOUTHEAST APPROX. 111 FEET TO THIS LOCATION.



## APACHE CORPORATION

**McDONALD STATE A/C 2 #40 WELL**  
**LOCATED 1650 FEET FROM THE SOUTH LINE**  
**AND 950 FEET FROM THE EAST LINE OF SECTION 13,**  
**TOWNSHIP 22 SOUTH, RANGE 36 EAST, N.M.P.M.,**  
**LEA COUNTY, NEW MEXICO**



PROVIDING SURVEYING SERVICES  
SINCE 1946  
**JOHN WEST SURVEYING COMPANY**  
412 N. DAL PASO HOBBS, N.M. 88240  
(575) 393-3117 www.jwsc.biz  
TBPLS# 10021000

Survey Date: 3/17/14

CAD Date: 4/1/14

Drawn By: DSS

W.O. No.: 14110288

Rev. :

Rel. W.O.:

Sheet 1 of 1

DISTRICT I  
1625 N. French Dr., Hobbs, NM 88240  
Phone: (575) 393-6161 Fax: (575) 393-0720

DISTRICT II  
811 S. First St., Artesia, NM 88210  
Phone: (575) 748-1283 Fax: (575) 748-9720

DISTRICT III  
1000 Rio Brazos Road, Aztec, NM 87410  
Phone: (505) 334-6178 Fax: (505) 334-6170

DISTRICT IV  
1220 S. St. Francis Dr., Santa Fe, NM 87505  
Phone: (505) 476-3460 Fax: (505) 476-3462

State of New Mexico  
Energy, Minerals & Natural Resources Department  
OIL CONSERVATION DIVISION  
1220 South St. Francis Dr.  
Santa Fe, New Mexico 87505

Form C-102  
Revised August 1, 2011  
Submit one copy to appropriate  
District Office

AMENDED REPORT

WELL LOCATION AND ACREAGE DEDICATION PLAT

API Number		Pool Code	Pool Name
Property Code	Property Name McDONALD STATE A/C 2		Well Number 40
OGRID No.	Operator Name APACHE CORPORATION		Elevation 3463'

Surface Location

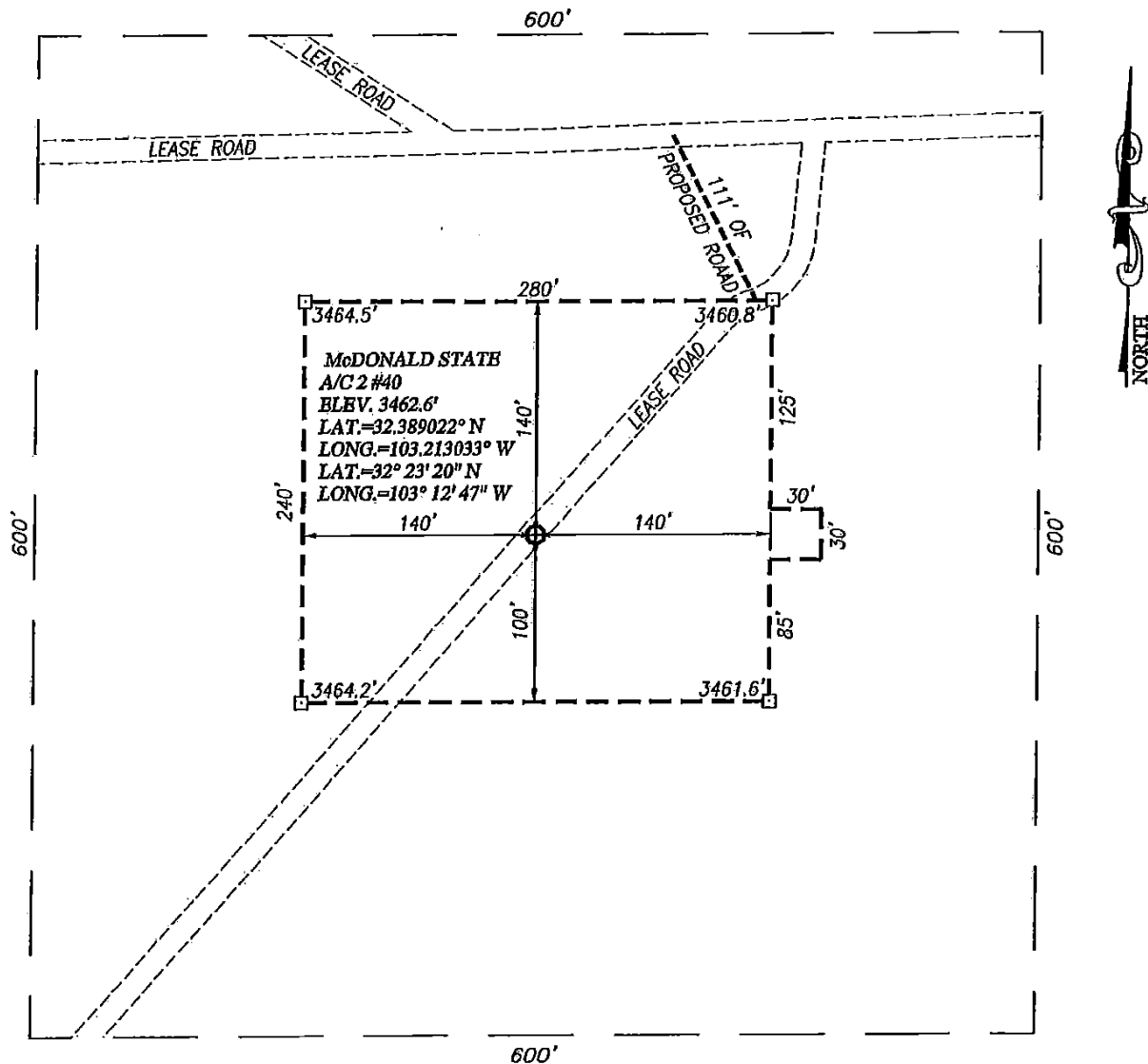
UL or lot No. I	Section 13	Township 22-S	Range 36-E	Lot Idn	Feet from the 1650	North/South line SOUTH	Feet from the 950	East/West line EAST	County LEA
--------------------	---------------	------------------	---------------	---------	-----------------------	---------------------------	----------------------	------------------------	---------------

Bottom Hole Location If Different From Surface

UL or lot No.	Section	Township	Range	Lot Idn	Feet from the	North/South line	Feet from the	East/West line	County
Dedicated Acres		Joint or Infill		Consolidation Code		Order No.			

NO ALLOWABLE WILL BE ASSIGNED TO THIS COMPLETION UNTIL ALL INTERESTS HAVE BEEN CONSOLIDATED OR A NON-STANDARD UNIT HAS BEEN APPROVED BY THE DIVISION

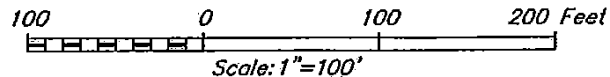
<p>GEODETIC COORDINATES NAD 27 NME</p> <p>SURFACE LOCATION Y=507052.3 N X=845822.3 E</p> <p>LAT.=32.389022° N LONG.=103.213033° W</p> <p>LAT.=32° 23' 20" N LONG.=103° 12' 47" W</p>	<p>S.L. 950'</p> <p>1650'</p>	<p><b>OPERATOR CERTIFICATION</b></p> <p>I hereby certify that the information herein is true and complete to the best of my knowledge and belief, and that this organization either owns a working interest or unleased mineral interest in the land including the proposed bottom hole location or has a right to drill this well at this location pursuant to a contract with an owner of such mineral or working interest, or to a voluntary pooling agreement or a compulsory pooling order heretofore entered by the division.</p> <p><i>Michelle Cooper</i> 4-9-14 Signature Date</p> <p><i>Michelle Cooper</i> Printed Name</p> <p><i>michelle.cooper@apachecorp.com</i> E-mail Address</p>
	<p><b>SURVEYOR CERTIFICATION</b></p> <p>I hereby certify that the well location shown on this plat was plotted from field notes of actual surveys made by me or under my supervision, and that the same is true and correct to the best of my belief.</p> <p>MARCH 17, 2014 Date of Survey</p> <p><i>Ronald J. Eidson</i> Signature &amp; Seal of Professional Surveyor</p> <p><i>Ronald J. Eidson</i> 3/18/2014 Certificate Number Date</p> <p>DSS JWSC W.O.: 14.11.0288</p>	



NOTE:  
1) SEE "LOCATION VERIFICATION MAP"  
FOR PROPOSED ROAD LOCATION.

DIRECTIONS TO McDonald STATE A/C 2 #40:

FROM THE INTERSECTION OF ST. HWY. #207 AND CO. RD. #E21  
(DELAWARE BASIN ROAD), GO WEST ON DELAWARE BASIN ROAD  
APPROX. 3.8 MILES. TURN LEFT AND GO SOUTHEAST APPROX.  
0.9 MILES. TURN RIGHT AND FOLLOW PROPOSED ROAD SURVEY  
STAKES SOUTHEAST APPROX. 111 FEET TO THIS LOCATION.



## APACHE CORPORATION

**McDONALD STATE A/C 2 #40 WELL**  
**LOCATED 1650 FEET FROM THE SOUTH LINE**  
**AND 950 FEET FROM THE EAST LINE OF SECTION 13,**  
**TOWNSHIP 22 SOUTH, RANGE 36 EAST, N.M.P.M.,**  
**LEA COUNTY, NEW MEXICO**



PROVIDING SURVEYING SERVICES  
SINCE 1946  
**JOHN WEST SURVEYING COMPANY**  
412 N. DAL PASO HOBBS, N.M. 88240  
(575) 393-3117 www.jwsc.biz  
TBPLS# 10021000

Survey Date: 3/17/14

CAD Date: 4/1/14

Drawn By: DSS

W.O. No.: 14110288

Rev. :

Rel. W.O.:

Sheet 1 of 1

DISTRICT I  
1625 N. French Dr., Hobbs, NM 88240  
Phone: (575) 393-6161 Fax: (575) 393-0720

DISTRICT II  
811 S. First St., Artesia, NM 88210  
Phone: (575) 748-1283 Fax: (575) 748-9720

DISTRICT III  
1000 Rio Brazos Road, Aztec, NM 87410  
Phone: (505) 334-6178 Fax: (505) 334-6170

DISTRICT IV  
1220 S. St. Francis Dr., Santa Fe, NM 87505  
Phone: (505) 476-3460 Fax: (505) 476-3462

State of New Mexico  
Energy, Minerals & Natural Resources Department  
OIL CONSERVATION DIVISION  
1220 South St. Francis Dr.  
Santa Fe, New Mexico 87505

Form C-102  
Revised August 1, 2011  
Submit one copy to appropriate  
District Office

AMENDED REPORT

WELL LOCATION AND ACREAGE DEDICATION PLAT

API Number		Pool Code	Pool Name
Property Code	Property Name McDONALD STATE A/C 2		Well Number 40
OGRID No.	Operator Name APACHE CORPORATION		Elevation 3463'

Surface Location

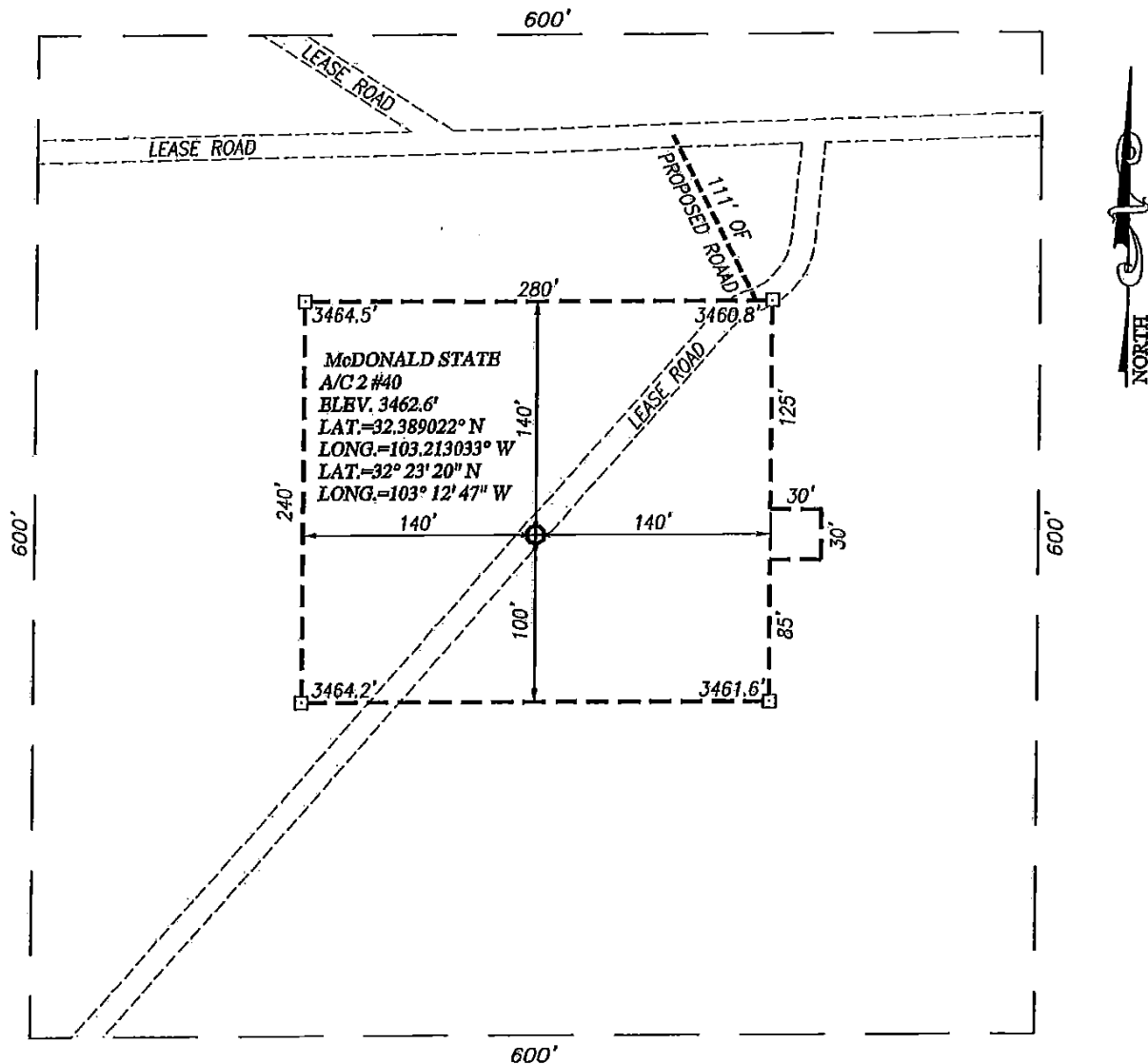
UL or lot No. I	Section 13	Township 22-S	Range 36-E	Lot Idn	Feet from the 1650	North/South line SOUTH	Feet from the 950	East/West line EAST	County LEA
--------------------	---------------	------------------	---------------	---------	-----------------------	---------------------------	----------------------	------------------------	---------------

Bottom Hole Location If Different From Surface

UL or lot No.	Section	Township	Range	Lot Idn	Feet from the	North/South line	Feet from the	East/West line	County
Dedicated Acres		Joint or Infill	Consolidation Code		Order No.				

NO ALLOWABLE WILL BE ASSIGNED TO THIS COMPLETION UNTIL ALL INTERESTS HAVE BEEN CONSOLIDATED OR A NON-STANDARD UNIT HAS BEEN APPROVED BY THE DIVISION

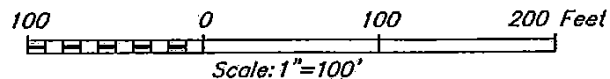
<p>GEODETIC COORDINATES NAD 27 NME</p> <p>SURFACE LOCATION Y=507052.3 N X=845822.3 E</p> <p>LAT.=32.389022° N LONG.=103.213033° W</p> <p>LAT.=32° 23' 20" N LONG.=103° 12' 47" W</p>	<p>S.L. 950'</p> <p>1650'</p>	<p><b>OPERATOR CERTIFICATION</b></p> <p>I hereby certify that the information herein is true and complete to the best of my knowledge and belief, and that this organization either owns a working interest or unleased mineral interest in the land including the proposed bottom hole location or has a right to drill this well at this location pursuant to a contract with an owner of such mineral or working interest, or to a voluntary pooling agreement or a compulsory pooling order heretofore entered by the division.</p> <p><i>Michelle Cooper</i> 4-9-14 Signature Date</p> <p><i>Michelle Cooper</i> Printed Name</p> <p><i>michelle.cooper@apachecorp.com</i> E-mail Address</p>
	<p><b>SURVEYOR CERTIFICATION</b></p> <p>I hereby certify that the well location shown on this plat was plotted from field notes of actual surveys made by me or under my supervision, and that the same is true and correct to the best of my belief.</p> <p>MARCH 17, 2014 Date of Survey</p> <p><i>Ronald J. Eidson</i> Signature &amp; Seal of Professional Surveyor</p> <p><i>Ronald J. Eidson</i> 3/18/2014 Certificate Number Date</p> <p>DSS JWSC W.O.: 14.11.0288</p>	



NOTE:  
1) SEE "LOCATION VERIFICATION MAP"  
FOR PROPOSED ROAD LOCATION.

DIRECTIONS TO McDonald STATE A/C 2 #40:

FROM THE INTERSECTION OF ST. HWY. #207 AND CO. RD. #E21  
(DELAWARE BASIN ROAD), GO WEST ON DELAWARE BASIN ROAD  
APPROX. 3.8 MILES. TURN LEFT AND GO SOUTHEAST APPROX.  
0.9 MILES. TURN RIGHT AND FOLLOW PROPOSED ROAD SURVEY  
STAKES SOUTHEAST APPROX. 111 FEET TO THIS LOCATION.



## APACHE CORPORATION

**McDONALD STATE A/C 2 #40 WELL**  
**LOCATED 1650 FEET FROM THE SOUTH LINE**  
**AND 950 FEET FROM THE EAST LINE OF SECTION 13,**  
**TOWNSHIP 22 SOUTH, RANGE 36 EAST, N.M.P.M.,**  
**LEA COUNTY, NEW MEXICO**



PROVIDING SURVEYING SERVICES  
SINCE 1946  
**JOHN WEST SURVEYING COMPANY**  
412 N. DAL PASO HOBBS, N.M. 88240  
(575) 393-3117 www.jwsc.biz  
TBPLS# 10021000

Survey Date: 3/17/14

CAD Date: 4/1/14

Drawn By: DSS

W.O. No.: 14110288

Rev: .

Rel. W.O.:

Sheet 1 of 1

**District I**  
1625 N. French Dr., Hobbs, NM 88240  
Phone:(575) 393-8181 Fax:(575) 393-0720  
**District II**  
811 S. First St., Artesia, NM 88210  
Phone:(575) 748-1283 Fax:(575) 748-9720  
**District III**  
1000 Rio Brazos Rd., Aztec, NM 87410  
Phone:(505) 334-8178 Fax:(505) 334-8170  
**District IV**  
1220 S. St Francis Dr., Santa Fe, NM 87505  
Phone:(505) 476-3470 Fax:(505) 476-3462

**State of New Mexico**  
**Energy, Minerals and Natural Resources**  
**Oil Conservation Division**  
**1220 S. St Francis Dr.**  
**Santa Fe, NM 87505**

Form APD Comments  
  
Permit 184408

**PERMIT COMMENTS**

Operator Name and Address: APACHE CORP [873] 303 Veterans Airpark Lane Midland, TX 79705		API Number: 30-025-41779
		Well: MCDONALD STATE AC 2 #040

Created By	Comment	Comment Date
DMULL		4/11/2014
pkautz		4/16/2014



**District I**  
1625 N. French Dr., Hobbs, NM 88240  
Phone:(575) 393-6161 Fax:(575) 393-0720  
**District II**  
811 S. First St., Artesia, NM 88210  
Phone:(575) 748-1283 Fax:(575) 748-9720  
**District III**  
1000 Rio Brazos Rd., Aztec, NM 87410  
Phone:(505) 334-6178 Fax:(505) 334-6170  
**District IV**  
1220 S. St Francis Dr., Santa Fe, NM 87505  
Phone:(505) 476-3470 Fax:(505) 476-3462

**State of New Mexico**  
**Energy, Minerals and Natural Resources**  
**Oil Conservation Division**  
**1220 S. St Francis Dr.**  
**Santa Fe, NM 87505**

Form APD Conditions

Permit 184408

**PERMIT CONDITIONS OF APPROVAL**

Operator Name and Address: APACHE CORP [873] 303 Veterans Airpark Lane Midland, TX 79705	API Number: 30-025-41779
	Well: MCDONALD STATE AC 2 #040

OCD Reviewer	Condition
DMULL	Pit construction and closure must satisfy all requirements of your approved plan, O.C.D. Rule 19.15.2.50, and the Pit and Below-Grade Tank Guidelines
DMULL	Once the well is spud, to prevent ground water contamination through whole or partial conduits from the surface, the operator shall drill without interruption through the fresh water zone or zones and shall immediately set in cement the water protection string
pkautz	Surface casing must be set 25' below top of Rustler Anhydrite in order to seal off protectable water
pkautz	SURFACE & PRODUCTION CASING - Cement must circulate to surface