

District I
1625 N. French Dr., Hobbs, NM 88240
Phone:(575) 393-8161 Fax:(575) 393-0720

District II
811 S. First St., Artesia, NM 88210
Phone:(575) 748-1283 Fax:(575) 748-9720

District III
1000 Rio Brazos Rd., Aztec, NM 87410
Phone:(505) 334-6178 Fax:(505) 334-6170

District IV
1220 S. St Francis Dr., Santa Fe, NM 87505
Phone:(505) 476-3470 Fax:(505) 476-3462

State of New Mexico
Energy, Minerals and Natural Resources
Oil Conservation Division
1220 S. St Francis Dr.
Santa Fe, NM 87505

Form C-101
August 1, 2011
Permit 186650

APPLICATION FOR PERMIT TO DRILL, RE-ENTER, DEEPEN, PLUGBACK, OR ADD A ZONE

1. Operator Name and Address APACHE CORP 303 Veterans Airpark Lane Midland, TX 79705		2. OGRID Number 873
4. Property Code 39779		3. API Number 30-025-41868
5. Property Name PINOT		6. Well No. 006

7. Surface Location

UL - Lot	F	Section	2	Township	20S	Range	38E	Lot Idn		Feet From	2310	N/S Line	N	Feet From	1650	E/W Line	W	County	Lea
----------	---	---------	---	----------	-----	-------	-----	---------	--	-----------	------	----------	---	-----------	------	----------	---	--------	-----

8. Proposed Bottom Hole Location

UL - Lot	F	Section	2	Township	20S	Range	38E	Lot Idn	F	Feet From	2310	N/S Line	N	Feet From	1650	E/W Line	W	County	Lea
----------	---	---------	---	----------	-----	-------	-----	---------	---	-----------	------	----------	---	-----------	------	----------	---	--------	-----

9. Pool Information

HOUSE;BLINEBRY	33230
HOUSE;TUBB	78760
HOUSE;DRINKARD	33250
HOUSE;ABO	33210

Additional Well Information

11. Work Type New Well	12. Well Type OIL	13. Cable/Rotary	14. Lease Type Private	15. Ground Level Elevation 3571
16. Multiple Y	17. Proposed Depth 8000	18. Formation Abo	19. Contractor	20. Spud Date
Depth to Ground water		Distance from nearest fresh water well		Distance to nearest surface water

☒ We will be using a closed-loop system in lieu of lined pits

21. Proposed Casing and Cement Program

Type	Hole Size	Casing Size	Casing Weight/ft	Setting Depth	Sacks of Cement	Estimated TOC
Surf	11	8.625	24	1620	535	0
Prod	7.875	5.5	17	8000	1050	0

Casing/Cement Program: Additional Comments

--

22. Proposed Blowout Prevention Program

Type	Working Pressure	Test Pressure	Manufacturer
Hydril	3000	2000	

23. I hereby certify that the information given above is true and complete to the best of my knowledge and belief. I further certify I have complied with 19.15.14.9 (A) NMAC <input checked="" type="checkbox"/> and/or 19.15.14.9 (B) NMAC <input checked="" type="checkbox"/> , if applicable. Signature:	OIL CONSERVATION DIVISION
Printed Name: Electronically filed by Bobby Smith	Approved By: Paul Kautz
Title:	Title: Geologist
Email Address: bobby.smith@apachecorp.com	Approved Date: 5/28/2014 Expiration Date: 5/28/2016
Date: 5/22/2014 Phone: 432-818-1020	Conditions of Approval Attached

DISTRICT I
1625 N. French Dr., Hobbs, NM 88240
Phone: (575) 393-6161 Fax: (575) 393-0720

DISTRICT II
811 S. First St., Artesia, NM 88210
Phone: (575) 748-1283 Fax: (575) 748-9720

DISTRICT III
1000 Rio Brazos Road, Aztec, NM 87410
Phone: (505) 334-6178 Fax: (505) 334-6170

DISTRICT IV
1220 S. St. Francis Dr., Santa Fe, NM 87505
Phone: (505) 476-3460 Fax: (505) 476-3462

State of New Mexico
Energy, Minerals & Natural Resources Department
OIL CONSERVATION DIVISION
1220 South St. Francis Dr.
Santa Fe, New Mexico 87505

Form C-102
Revised August 1, 2011
Submit one copy to appropriate
District Office

AMENDED REPORT

WELL LOCATION AND ACREAGE DEDICATION PLAT

API Number 30-025-	Pool Code 33230 78760	House; Blinabry	House; Tubb	House; Drinkard	House; ABO
Property Code 39779	Property Name PINOT				Well Number 6
OGRID No. 873	Operator Name APACHE CORPORATION				Elevation 3571'

Surface Location

UL or lot No. F	Section 2	Township 20-S	Range 38-E	Lot Idn	Feet from the 2310	North/South line NORTH	Feet from the 1650	East/West line WEST	County LEA
---------------------------	---------------------	-------------------------	----------------------	---------	------------------------------	----------------------------------	------------------------------	-------------------------------	----------------------

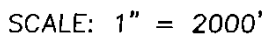
Bottom Hole Location If Different From Surface

UL or lot No.	Section	Township	Range	Lot Idn	Feet from the	North/South line	Feet from the	East/West line	County
Dedicated Acres 40	Joint or Infill	Consolidation Code	Order No.						

NO ALLOWABLE WILL BE ASSIGNED TO THIS COMPLETION UNTIL ALL INTERESTS HAVE BEEN CONSOLIDATED OR A NON-STANDARD UNIT HAS BEEN APPROVED BY THE DIVISION

LOT 4 39.73 AC.	LOT 3 39.77 AC.	LOT 2 39.79 AC.	LOT 1 39.83 AC.
<p>GEODETIC COORDINATES NAD 27 NME SURFACE LOCATION Y=585199.2 N X=873034.4 E</p> <p>LAT.=32.602976° N LONG.=103.122020° W</p> <p>LAT.=32° 36' 11" N LONG.=103° 07' 19" W</p> <p>GEODETIC COORDINATES NAD 83 NME</p> <p>SURFACE LOCATION Y=585258.3 N X=914216.2 E</p> <p>LAT.=32.603091° N LONG.=103.122498° W</p> <p>LAT.=32° 36' 11" N LONG.=103° 07' 21" W</p>			
<p>OPERATOR CERTIFICATION</p> <p>I hereby certify that the information herein is true and complete to the best of my knowledge and belief, and that this organization either owns a working interest or unleased mineral interest in the land including the proposed bottom hole location or has a right to drill this well at this location pursuant to a contract with an owner of such mineral or working interest, or to a voluntary pooling agreement or a compulsory pooling order heretofore entered by the division.</p> <p><i>Michelle Cooper</i> 5-22-14 Signature Date <i>Michelle Cooper</i> Printed Name <i>michelle.cooper@apachecorp.com</i> E-mail Address</p> <p>SURVEYOR CERTIFICATION</p> <p>I hereby certify that the well location shown on this plat was plotted from field notes of actual surveys made by me or under my supervision, and that the same is true and correct to the best of my belief.</p> <p>APRIL 18, 2014 Date of Survey</p> <p>Signature & Seal of Professional Surveyor: </p> <p>Certification Number: 3239 Gary G. Eidson 12641 Ronald J. Eidson 3239 ACK WSC W.O.: 14.11.0394</p>			

NORTH



CONTOUR INTERVAL:
HOBBS SE, N.M. - 10'
HOBBS SW, N.M. - 10'

SEC. 2 TWP. 20-S RGE. 38-E

SURVEY N.M.P.M.

COUNTY LEA STATE NEW MEXICO

DESCRIPTION 2310' FNL & 1650' FWL

ELEVATION 3571'

OPERATOR APACHE CORPORATION

LEASE PINOT

U.S.G.S. TOPOGRAPHIC MAP
HOBBS SE, N.M.

DIRECTIONS TO PINOT #6:

FROM THE INTERSECTION OF ST. HIGHWAY 18 AND E. MEYERS LN,
GO EAST ON E. MEYERS LN. FOR APPROX. 0.1 MILE. TURN RIGHT
AND GO SOUTH AT LEASE ROAD APPROX. 300 FEET TO THE PINOT
#2. THE LOCATION IS SOUTHEAST APPROX. 620 FEET.



PROVIDING SURVEYING SERVICES
SINCE 1946
JOHN WEST SURVEYING COMPANY
412 N. DAL PASO HOBBES, N.M. 88240
(575) 993-3117 www.jwsc.biz
TBPLS# 10021000

DISTRICT I
1625 N. French Dr., Hobbs, NM 88240
Phone: (575) 393-6161 Fax: (575) 393-0720

DISTRICT II
811 S. First St., Artesia, NM 88210
Phone: (575) 748-1283 Fax: (575) 748-9720

DISTRICT III
1000 Rio Brazos Road, Aztec, NM 87410
Phone: (505) 334-6178 Fax: (505) 334-6170

DISTRICT IV
1220 S. St. Francis Dr., Santa Fe, NM 87505
Phone: (505) 476-3460 Fax: (505) 476-3462

State of New Mexico
Energy, Minerals & Natural Resources Department
OIL CONSERVATION DIVISION
1220 South St. Francis Dr.
Santa Fe, New Mexico 87505

Form C-102
Revised August 1, 2011
Submit one copy to appropriate
District Office

AMENDED REPORT

WELL LOCATION AND ACREAGE DEDICATION PLAT

API Number 30-025-	Pool Code 33230 78760	House; Blinabry	House; Tubb	House; Drinkard	House; ABO
Property Code 39779	Property Name PINOT				Well Number 6
OGRID No. 873	Operator Name APACHE CORPORATION				Elevation 3571'

Surface Location

UL or lot No. F	Section 2	Township 20-S	Range 38-E	Lot Idn	Feet from the 2310	North/South line NORTH	Feet from the 1650	East/West line WEST	County LEA
---------------------------	---------------------	-------------------------	----------------------	---------	------------------------------	----------------------------------	------------------------------	-------------------------------	----------------------

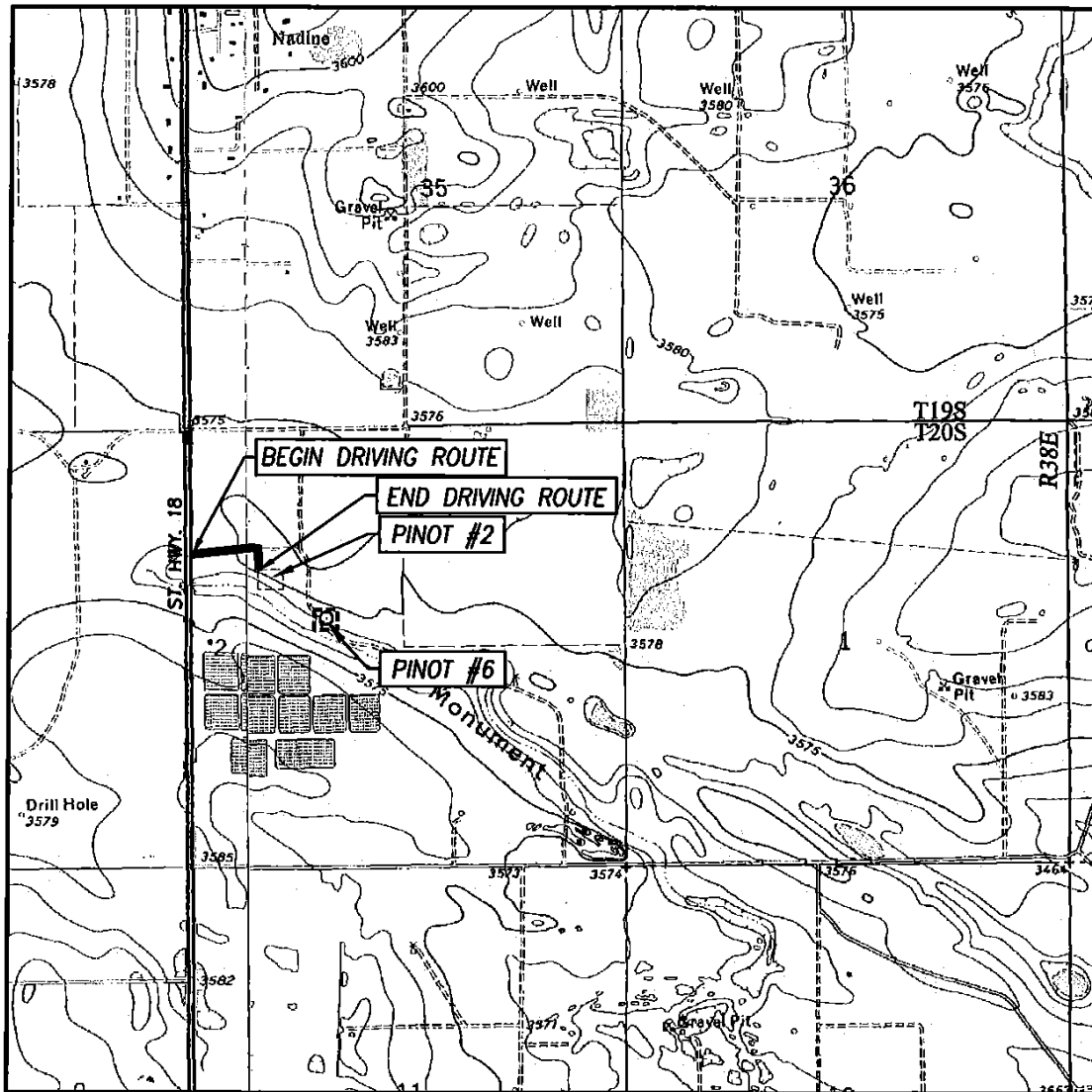
Bottom Hole Location If Different From Surface

UL or lot No.	Section	Township	Range	Lot Idn	Feet from the	North/South line	Feet from the	East/West line	County
Dedicated Acres 40	Joint or Infill	Consolidation Code	Order No.						

NO ALLOWABLE WILL BE ASSIGNED TO THIS COMPLETION UNTIL ALL INTERESTS HAVE BEEN CONSOLIDATED OR A NON-STANDARD UNIT HAS BEEN APPROVED BY THE DIVISION

LOT 4 39.73 AC.	LOT 3 39.77 AC.	LOT 2 39.79 AC.	LOT 1 39.83 AC.
<p>GEODETIC COORDINATES NAD 27 NME SURFACE LOCATION Y=585199.2 N X=873034.4 E</p> <p>LAT.=32.602976° N LONG.=103.122020° W</p> <p>LAT.=32° 36' 11" N LONG.=103° 07' 19" W</p> <p>GEODETIC COORDINATES NAD 83 NME</p> <p>SURFACE LOCATION Y=585258.3 N X=914216.2 E</p> <p>LAT.=32.603091° N LONG.=103.122498° W</p> <p>LAT.=32° 36' 11" N LONG.=103° 07' 21" W</p>			
<p>OPERATOR CERTIFICATION</p> <p>I hereby certify that the information herein is true and complete to the best of my knowledge and belief, and that this organization either owns a working interest or unleased mineral interest in the land including the proposed bottom hole location or has a right to drill this well at this location pursuant to a contract with an owner of such mineral or working interest, or to a voluntary pooling agreement or a compulsory pooling order heretofore entered by the division.</p> <p><i>Michelle Cooper</i> 5-22-14 Signature Date <i>Michelle Cooper</i> Printed Name <i>michelle.cooper@apachecorp.com</i> E-mail Address</p> <p>SURVEYOR CERTIFICATION</p> <p>I hereby certify that the well location shown on this plat was plotted from field notes of actual surveys made by me or under my supervision, and that the same is true and correct to the best of my belief.</p> <p>APRIL 18, 2014 Date of Survey Signature & Seal of Professional Surveyor: <i>Ronald J. Eidson</i> Professional Surveyor 3239 Certificate Number 12641 Ronald J. Eidson 3239 ACK WSC W.O.: 14.11.0394</p>			

LOCATION VERIFICATION MAP



SCALE: 1" = 2000'

CONTOUR INTERVAL:
HOBBS SE, N.M. - 10'
HOBBS SW, N.M. - 10'

SEC. 2 TWP. 20-S RGE. 38-E

SURVEY N.M.P.M.

COUNTY LEA STATE NEW MEXICO

DESCRIPTION 2310' FNL & 1650' FWL

ELEVATION 3571'

OPERATOR APACHE CORPORATION

LEASE PINOT

U.S.G.S. TOPOGRAPHIC MAP
HOBBS SE, N.M.

DIRECTIONS TO PINOT #6:

FROM THE INTERSECTION OF ST. HIGHWAY 18 AND E. MEYERS LN.,
GO EAST ON E. MEYERS LN. FOR APPROX. 0.1 MILE. TURN RIGHT
AND GO SOUTH AT LEASE ROAD APPROX. 300 FEET TO THE PINOT
#2. THE LOCATION IS SOUTHEAST APPROX. 620 FEET.



PROVIDING SURVEYING SERVICES
SINCE 1946
JOHN WEST SURVEYING COMPANY
412 N. DAL PASO HOBBS, N.M. 88240
(575) 993-3117 www.jwsc.biz
TBPLS# 10021000

DISTRICT I
1625 N. French Dr., Hobbs, NM 88240
Phone: (575) 393-6161 Fax: (575) 393-0720

DISTRICT II
811 S. First St., Artesia, NM 88210
Phone: (575) 748-1283 Fax: (575) 748-9720

DISTRICT III
1000 Rio Brazos Road, Aztec, NM 87410
Phone: (505) 334-6178 Fax: (505) 334-6170

DISTRICT IV
1220 S. St. Francis Dr., Santa Fe, NM 87505
Phone: (505) 476-3460 Fax: (505) 476-3462

State of New Mexico
Energy, Minerals & Natural Resources Department
OIL CONSERVATION DIVISION
1220 South St. Francis Dr.
Santa Fe, New Mexico 87505

Form C-102
Revised August 1, 2011
Submit one copy to appropriate
District Office

AMENDED REPORT

WELL LOCATION AND ACREAGE DEDICATION PLAT

API Number 30-025-	Pool Code 33230 78760	House; Blinabry	House; Tubb	House; Drinkard	House; ABO
Property Code 39779	Property Name PINOT				Well Number 6
OGRID No. 873	Operator Name APACHE CORPORATION				Elevation 3571'

Surface Location

UL or lot No. F	Section 2	Township 20-S	Range 38-E	Lot Idn	Feet from the 2310	North/South line NORTH	Feet from the 1650	East/West line WEST	County LEA
---------------------------	---------------------	-------------------------	----------------------	---------	------------------------------	----------------------------------	------------------------------	-------------------------------	----------------------

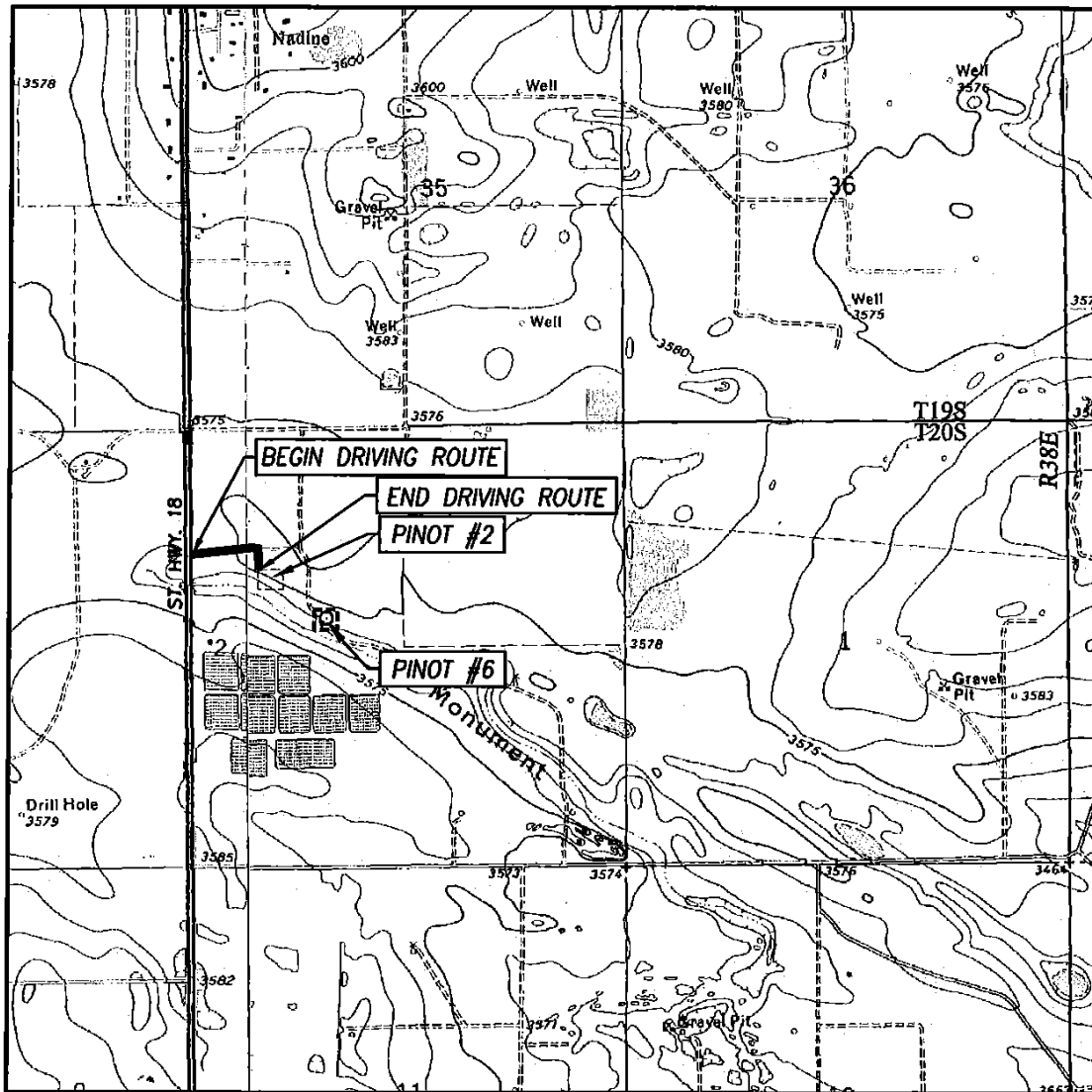
Bottom Hole Location If Different From Surface

UL or lot No.	Section	Township	Range	Lot Idn	Feet from the	North/South line	Feet from the	East/West line	County
Dedicated Acres 40	Joint or Infill	Consolidation Code	Order No.						

NO ALLOWABLE WILL BE ASSIGNED TO THIS COMPLETION UNTIL ALL INTERESTS HAVE BEEN CONSOLIDATED OR A NON-STANDARD UNIT HAS BEEN APPROVED BY THE DIVISION

LOT 4 39.73 AC.	LOT 3 39.77 AC.	LOT 2 39.79 AC.	LOT 1 39.83 AC.
<p>GEODETIC COORDINATES NAD 27 NME SURFACE LOCATION Y=585199.2 N X=873034.4 E</p> <p>LAT.=32.602976° N LONG.=103.122020° W</p> <p>LAT.=32° 36' 11" N LONG.=103° 07' 19" W</p> <p>GEODETIC COORDINATES NAD 83 NME SURFACE LOCATION Y=585258.3 N X=914216.2 E</p> <p>LAT.=32.603091° N LONG.=103.122498° W</p> <p>LAT.=32° 36' 11" N LONG.=103° 07' 21" W</p>			
<p>OPERATOR CERTIFICATION</p> <p>I hereby certify that the information herein is true and complete to the best of my knowledge and belief, and that this organization either owns a working interest or unleased mineral interest in the land including the proposed bottom hole location or has a right to drill this well at this location pursuant to a contract with an owner of such mineral or working interest, or to a voluntary pooling agreement or a compulsory pooling order heretofore entered by the division.</p> <p>Signature: <i>Michelle Cooper</i> Date: <i>5-22-14</i></p> <p>Printed Name: <i>Michelle Cooper</i></p> <p>E-mail Address: <i>michelle.cooper@apachecorp.com</i></p>			
<p>SURVEYOR CERTIFICATION</p> <p>I hereby certify that the well location shown on this plat was plotted from field notes of actual surveys made by me or under my supervision, and that the same is true and correct to the best of my belief.</p> <p>Date of Survey: <i>APRIL 18, 2014</i></p> <p>Signature & Seal of Professional Surveyor:</p> <p><i>Ronald J. Eidson</i></p> <p>Certificate Number: <i>3239</i> Gary G. Eidson 12641 Ronald J. Eidson 3239</p> <p>ACK</p>			

LOCATION VERIFICATION MAP



SCALE: 1" = 2000'

CONTOUR INTERVAL:
HOBBS SE, N.M. - 10'
HOBBS SW, N.M. - 10'

SEC. 2 TWP. 20-S RGE. 38-E

SURVEY N.M.P.M.

COUNTY LEA STATE NEW MEXICO

DESCRIPTION 2310' FNL & 1650' FWL

ELEVATION 3571'

OPERATOR APACHE CORPORATION

LEASE PINOT

U.S.G.S. TOPOGRAPHIC MAP
HOBBS SE, N.M.

DIRECTIONS TO PINOT #6:

FROM THE INTERSECTION OF ST. HIGHWAY 18 AND E. MEYERS LN.,
GO EAST ON E. MEYERS LN. FOR APPROX. 0.1 MILE. TURN RIGHT
AND GO SOUTH AT LEASE ROAD APPROX. 300 FEET TO THE PINOT
#2. THE LOCATION IS SOUTHEAST APPROX. 620 FEET.



PROVIDING SURVEYING SERVICES
SINCE 1946
JOHN WEST SURVEYING COMPANY
412 N. DAL PASO HOBBS, N.M. 88240
(575) 993-3117 www.jwsc.biz
TBPLS# 10021000

DISTRICT I
1625 N. French Dr., Hobbs, NM 88240
Phone: (575) 393-6161 Fax: (575) 393-0720

DISTRICT II
811 S. First St., Artesia, NM 88210
Phone: (575) 748-1283 Fax: (575) 748-9720

DISTRICT III
1000 Rio Brazos Road, Aztec, NM 87410
Phone: (505) 334-6178 Fax: (505) 334-6170

DISTRICT IV
1220 S. St. Francis Dr., Santa Fe, NM 87505
Phone: (505) 476-3460 Fax: (505) 476-3462

State of New Mexico
Energy, Minerals & Natural Resources Department
OIL CONSERVATION DIVISION
1220 South St. Francis Dr.
Santa Fe, New Mexico 87505

Form C-102
Revised August 1, 2011
Submit one copy to appropriate
District Office

AMENDED REPORT

WELL LOCATION AND ACREAGE DEDICATION PLAT

API Number 30-025-	Pool Code 33230 78760	House; Blinabry	House; Tubb	House; Drinkard	House; ABO
Property Code 39779	Property Name PINOT				Well Number 6
OGRID No. 873	Operator Name APACHE CORPORATION				Elevation 3571'

Surface Location

UL or lot No. F	Section 2	Township 20-S	Range 38-E	Lot Idn	Feet from the 2310	North/South line NORTH	Feet from the 1650	East/West line WEST	County LEA
---------------------------	---------------------	-------------------------	----------------------	---------	------------------------------	----------------------------------	------------------------------	-------------------------------	----------------------

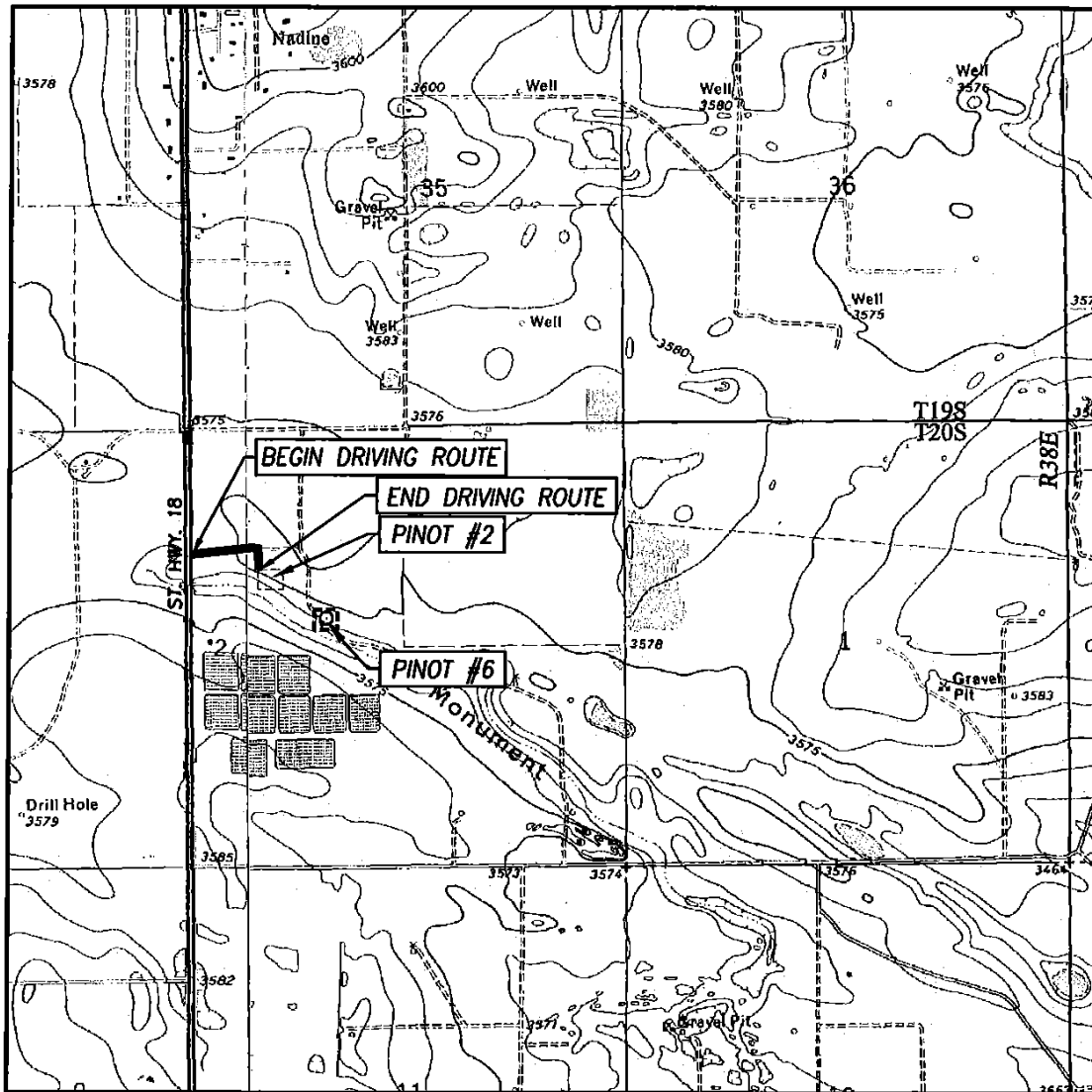
Bottom Hole Location If Different From Surface

UL or lot No.	Section	Township	Range	Lot Idn	Feet from the	North/South line	Feet from the	East/West line	County
Dedicated Acres 40	Joint or Infill	Consolidation Code	Order No.						

NO ALLOWABLE WILL BE ASSIGNED TO THIS COMPLETION UNTIL ALL INTERESTS HAVE BEEN CONSOLIDATED OR A NON-STANDARD UNIT HAS BEEN APPROVED BY THE DIVISION

LOT 4 39.73 AC.	LOT 3 39.77 AC.	LOT 2 39.79 AC.	LOT 1 39.83 AC.
<p>GEODETIC COORDINATES NAD 27 NME SURFACE LOCATION Y=585199.2 N X=873034.4 E</p> <p>LAT.=32.602976° N LONG.=103.122020° W</p> <p>LAT.=32° 36' 11" N LONG.=103° 07' 19" W</p> <p>GEODETIC COORDINATES NAD 83 NME</p> <p>SURFACE LOCATION Y=585258.3 N X=914216.2 E</p> <p>LAT.=32.603091° N LONG.=103.122498° W</p> <p>LAT.=32° 36' 11" N LONG.=103° 07' 21" W</p>			
<p>OPERATOR CERTIFICATION</p> <p>I hereby certify that the information herein is true and complete to the best of my knowledge and belief, and that this organization either owns a working interest or unleased mineral interest in the land including the proposed bottom hole location or has a right to drill this well at this location pursuant to a contract with an owner of such mineral or working interest, or to a voluntary pooling agreement or a compulsory pooling order heretofore entered by the division.</p> <p><i>Michelle Cooper</i> 5-22-14 Signature Date <i>Michelle Cooper</i> Printed Name <i>michelle.cooper@apachecorp.com</i> E-mail Address</p> <p>SURVEYOR CERTIFICATION</p> <p>I hereby certify that the well location shown on this plat was plotted from field notes of actual surveys made by me or under my supervision, and that the same is true and correct to the best of my belief.</p> <p>APRIL 18, 2014 Date of Survey Signature & Seal of Professional Surveyor: Ronald J. Eidson 12641 Certificate Number Ronald J. Eidson 3239 ACK WSC W.O.: 14.11.0394</p>			

LOCATION VERIFICATION MAP



SCALE: 1" = 2000'

CONTOUR INTERVAL:
HOBBS SE, N.M. - 10'
HOBBS SW, N.M. - 10'

SEC. 2 TWP. 20-S RGE. 38-E

SURVEY N.M.P.M.

COUNTY LEA STATE NEW MEXICO

DESCRIPTION 2310' FNL & 1650' FWL

ELEVATION 3571'

OPERATOR APACHE CORPORATION

LEASE PINOT

U.S.G.S. TOPOGRAPHIC MAP
HOBBS SE, N.M.

DIRECTIONS TO PINOT #6:

FROM THE INTERSECTION OF ST. HIGHWAY 18 AND E. MEYERS LN.,
GO EAST ON E. MEYERS LN. FOR APPROX. 0.1 MILE. TURN RIGHT
AND GO SOUTH AT LEASE ROAD APPROX. 300 FEET TO THE PINOT
#2. THE LOCATION IS SOUTHEAST APPROX. 620 FEET.



PROVIDING SURVEYING SERVICES
SINCE 1946
JOHN WEST SURVEYING COMPANY
412 N. DAL PASO HOBBS, N.M. 88240
(575) 993-3117 www.jwsc.biz
TBPLS# 10021000

District I
1625 N. French Dr., Hobbs, NM 88240
Phone:(575) 393-8181 Fax:(575) 393-0720
District II
811 S. First St., Artesia, NM 88210
Phone:(575) 748-1283 Fax:(575) 748-9720
District III
1000 Rio Brazos Rd., Aztec, NM 87410
Phone:(505) 334-8178 Fax:(505) 334-8170
District IV
1220 S. St Francis Dr., Santa Fe, NM 87505
Phone:(505) 476-3470 Fax:(505) 476-3462

State of New Mexico
Energy, Minerals and Natural Resources
Oil Conservation Division
1220 S. St Francis Dr.
Santa Fe, NM 87505

Form APD Comments

Permit 188650

PERMIT COMMENTS

Operator Name and Address: APACHE CORP [873] 303 Veterans Airpark Lane Midland, TX 79705		API Number: 30-025-41868
		Well: PINOT #006

Created By	Comment	Comment Date
------------	---------	--------------

District I
1625 N. French Dr., Hobbs, NM 88240
Phone:(575) 393-8181 Fax:(575) 393-0720
District II
811 S. First St., Artesia, NM 88210
Phone:(575) 748-1283 Fax:(575) 748-9720
District III
1000 Rio Brazos Rd., Aztec, NM 87410
Phone:(505) 334-6178 Fax:(505) 334-6170
District IV
1220 S. St Francis Dr., Santa Fe, NM 87505
Phone:(505) 476-3470 Fax:(505) 476-3462

State of New Mexico
Energy, Minerals and Natural Resources
Oil Conservation Division
1220 S. St Francis Dr.
Santa Fe, NM 87505

Form APD Conditions

Permit 188650

PERMIT CONDITIONS OF APPROVAL

Operator Name and Address: APACHE CORP [873] 303 Veterans Airpark Lane Midland, TX 79705		API Number: 30-025-41868
		Well: PINOT #006

OCD Reviewer	Condition
pkautz	Will require form C-103 per R-11363 preapproved pools(House;Blinbry, House;Tubb and House;Drinkard) for Downhole commingling before these zones can be produced by commingling in the wellbore in accordance with the Rule 19.15.12.11. Will require form C-107A submitted to Santa Fe when downhole comingling House;Abo with other pools