

District I
1625 N. French Dr., Hobbs, NM 88240
Phone:(575) 393-6161 Fax:(575) 393-0720
District II
811 S. First St., Artesia, NM 88210
Phone:(575) 749-1283 Fax:(575) 748-9720
District III
1000 Rio Brazos Rd., Aztec, NM 87410
Phone:(505) 334-6178 Fax:(505) 334-6170
District IV
1220 S. St Francis Dr., Santa Fe, NM 87505
Phone:(505) 476-3470 Fax:(505) 476-3462

State of New Mexico
Energy, Minerals and Natural Resources
Oil Conservation Division
1220 S. St Francis Dr.
Santa Fe, NM 87505

Form C-101
August 1, 2011
Permit 190158

APPLICATION FOR PERMIT TO DRILL, RE-ENTER, DEEPEN, PLUGBACK, OR ADD A ZONE

1. Operator Name and Address APACHE CORP 303 Veterans Airpark Lane Midland, TX 79705		2. OGRID Number 873
		3. API Number 30-015-42556
4. Property Code 313568	5. Property Name OUTLAW STATE	6. Well No. 006

7. Surface Location

UL - Lot O	Section 29	Township 17S	Range 28E	Lot Idn	Feet From 990	N/S Line S	Feet From 1650	E/W Line E	County Eddy
---------------	---------------	-----------------	--------------	---------	------------------	---------------	-------------------	---------------	----------------

8. Proposed Bottom Hole Location

UL - Lot O	Section 29	Township 17S	Range 29E	Lot Idn O	Feet From 990	N/S Line S	Feet From 1650	E/W Line E	County Eddy
---------------	---------------	-----------------	--------------	--------------	------------------	---------------	-------------------	---------------	----------------

9. Pool Information

ARTESIA; GLORIETA-YESO (O)	96830
----------------------------	-------

Additional Well Information

11. Work Type New Well	12. Well Type OIL	13. Cable/Rotary	14. Lease Type State	15. Ground Level Elevation 3701
16. Multiple N	17. Proposed Depth 5300	18. Formation Yeso	19. Contractor	20. Spud Date
Depth to Ground water		Distance from nearest fresh water well		Distance to nearest surface water

We will be using a closed-loop system in lieu of lined pits

21. Proposed Casing and Cement Program

Type	Hole Size	Casing Size	Casing Weight/ft	Setting Depth	Sacks of Cement	Estimated TOC
Surf	11	8.625	24	400	200	
Prod	7.875	5.5	17	5300	700	

Casing/Cement Program: Additional Comments

--

22. Proposed Blowout Prevention Program

Type	Working Pressure	Test Pressure	Manufacturer
Hydril	3000	2000	

<p>23. I hereby certify that the information given above is true and complete to the best of my knowledge and belief. I further certify I have complied with 19.15.14.9 (A) NMAC <input checked="" type="checkbox"/> and/or 19.15.14.9 (B) NMAC <input checked="" type="checkbox"/>, if applicable.</p> <p>Signature: _____</p> <p>Printed Name: Electronically filed by Bobby Smith</p> <p>Title: _____</p> <p>Email Address: bobby.smith@apachecorp.com</p> <p>Date: 8/5/2014</p>	<p>OIL CONSERVATION DIVISION</p> <p>Approved By: Randy Dade</p> <p>Title: District Supervisor</p> <p>Approved Date: 8/12/2014</p> <p>Expiration Date: 8/12/2016</p> <p>Conditions of Approval Attached</p>
---	---

DISTRICT I
 1825 N. French Dr., Hobbs, NM 88240
 Phone (575) 393-9161 Fax: (575) 393-0720

DISTRICT II
 911 S. First St., Artesia, NM 88210
 Phone (575) 748-1283 Fax: (575) 748-9720

DISTRICT III
 1000 Rio Brazos Rd., Aztec, NM 87410
 Phone (505) 334-9170 Fax: (505) 334-9170

DISTRICT IV
 1220 S. St. Francis Dr., Santa Fe, NM 87505
 Phone (505) 478-3460 Fax: (505) 478-3462

State of New Mexico
 Energy, Minerals and Natural Resources Department

Form C-102
 Revised August 1, 2011

Submit one copy to appropriate
 District Office

OIL CONSERVATION DIVISION
 1220 South St. Francis Dr.
 Santa Fe, New Mexico 87505

WELL LOCATION AND ACREAGE DEDICATION PLAT

AMENDED REPORT

API Number 30-015-	Pool Code 96838	Pool Name Artesia; Glorieta - Yeso
Property Code	Property Name OUTLAW STATE	Well Number 6
OGRID No. 873	Operator Name APACHE CORPORATION	Elevation 3701

Surface Location

UL or lot No.	Section	Township	Range	Lot Idn	Feet from the	SOUTH/South line	Feet from the	East/WEST LINE	County
0	29	17 S	28 E		990	SOUTH	1650	EAST	EDDY

Bottom Hole Location If Different From Surface

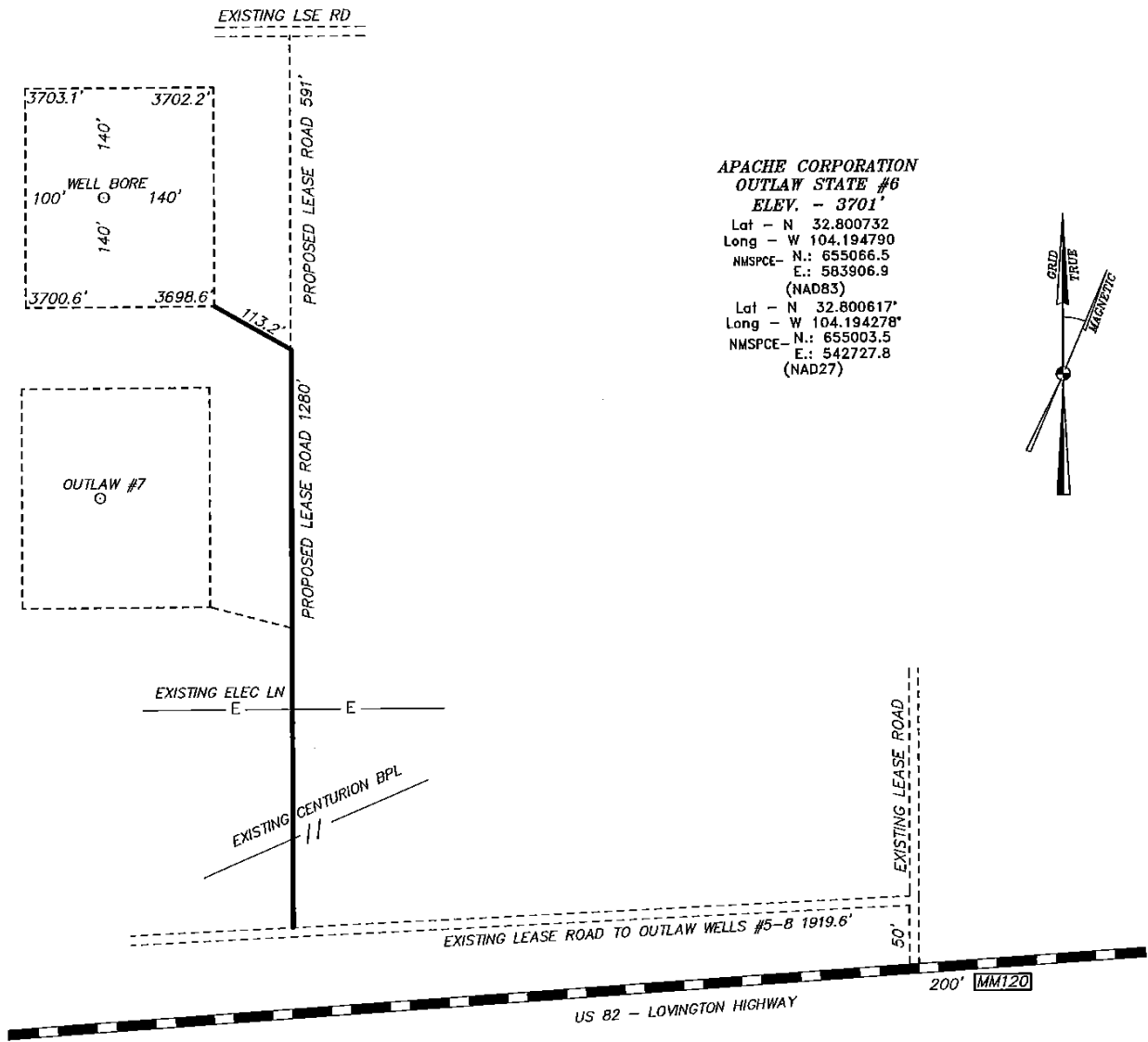
UL or lot No.	Section	Township	Range	Lot Idn	Feet from the	SOUTH/South line	Feet from the	East/WEST LINE	County

Dedicated Acres 40	Joint or Infill	Consolidation Code	Order No.
------------------------------	-----------------	--------------------	-----------

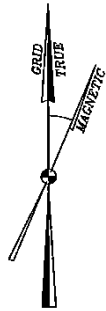
NO ALLOWABLE WILL BE ASSIGNED TO THIS COMPLETION UNTIL ALL INTERESTS HAVE BEEN CONSOLIDATED OR A NON-STANDARD UNIT HAS BEEN APPROVED BY THE DIVISION

<p>Lat - N 32.812407° Long - W 104.206286° NMSPC-E: 659309.7 E.: 580369.4 (NAD83)</p> <p>Lat - N 32.812292° Long - W 104.205773° NMSPC-E: 659246.7 E.: 539190.3 (NAD27)</p> <p>Lat - N 32.805133° Long - W 104.206361° NMSPC-E: 658663.4 E.: 580349.5 (NAD83)</p> <p>Lat - N 32.805018° Long - W 104.205848° NMSPC-E: 656600.4 E.: 539170.4 (NAD27)</p>	<p>Lat - N 32.812382° Long - W 104.197769° NMSPC-E: 659304.1 E.: 582986.2 (NAD83)</p> <p>Lat - N 32.812267° Long - W 104.197257° NMSPC-E: 659241.1 E.: 541607.1 (NAD27)</p>	<p>Lat - N 32.812355° Long - W 104.189253° NMSPC-E: 659237.4 E.: 585602.3 (NAD83)</p> <p>Lat - N 32.812240° Long - W 104.188741° NMSPC-E: 659234.3 E.: 544423.2 (NAD27)</p>	<p>OPERATOR CERTIFICATION I hereby certify that the information contained herein is true and complete to the best of my knowledge and belief, and that this organization, either owns a working interest or unleased mineral interest in the land including the proposed bottom hole location or has a right to drill this well at this location pursuant to a contract with an owner of such a mineral or working interest, or to a voluntary pooling agreement or a compulsory pooling order heretofore entered by the division.</p> <p><i>Michelle Cooper 8-5-14</i> Signature Date</p> <p><i>Michelle Cooper</i> Printed Name</p> <p><i>michelle-cooper@apachecorp.com</i> Email Address</p>
<p>SURFACE LOCATION Lat - N 32.800732° Long - W 104.194790° NMSPC-E: 655066.5 E.: 583906.9 (NAD83)</p> <p>Lat - N 32.800617° Long - W 104.194278° NMSPC-E: 655003.5 E.: 542727.8 (NAD27)</p>			<p>SURVEYOR CERTIFICATION I hereby certify that the well location shown on this plat was plotted from field notes of actual surveys made by me or under my supervision, and that the same is true and correct to the best of my belief.</p> <p>Date Surveyed: <i>8/5/14</i></p> <p>Signature: <i>[Signature]</i> Professional Surveyor</p> <p>Certification No. <i>7977</i></p>
<p>Lat - N 32.797859° Long - W 104.206430° NMSPC-E: 654017.1 E.: 580331.7 (NAD83)</p> <p>Lat - N 32.797744° Long - W 104.205918° NMSPC-E: 653954.1 E.: 539152.5 (NAD27)</p>	<p>Lat - N 32.797970° Long - W 104.197936° NMSPC-E: 654060.6 E.: 582941.7 (NAD83)</p> <p>Lat - N 32.797855° Long - W 104.197424° NMSPC-E: 653997.6 E.: 541762.5 (NAD27)</p>	<p>Lat - N 32.798079° Long - W 104.188456° NMSPC-E: 654103.8 E.: 585547.1 (NAD83)</p> <p>Lat - N 32.797964° Long - W 104.188944° NMSPC-E: 654040.8 E.: 544368.0 (NAD27)</p>	<p>NEW MEXICO PROFESSIONAL SURVEYOR 7977</p> <p>Scale: 1" = 1000' WO Num.: 30202</p>

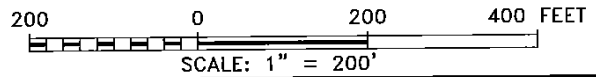
SECTION 29, TOWNSHIP 17 SOUTH, RANGE 28 EAST. N.M.P.M.,
EDDY COUNTY, NEW MEXICO.



APACHE CORPORATION
OUTLAW STATE #6
ELEV. - 3701'
 Lat - N 32.800732
 Long - W 104.194790
 NMSPC- N.: 655066.5
 E.: 583906.9
 (NAD83)
 Lat - N 32.800617
 Long - W 104.194278
 NMSPC- N.: 655003.5
 E.: 542727.8
 (NAD27)



ARTESIA, NM IS ±12 MILES TO THE NORTHWEST OF LOCATION.



Directions to Location:

FROM LOCO HILLS GO WEST ON US HWY 82,
 APPROX 200 FEET WEST OF MILE MARKER 120 TURN
 NORTH ON LEASE ROAD 50 FEET, WEST 1919.6
 FEET, THEN RIGHT ONTO PROPOSED LEASE ROAD.



P.O. Box 1786 (575) 393-7316 - Office
 1120 N. West County Rd. (575) 392-2206 - Fax
 Hobbs, New Mexico 88241 basin-surveys.com

Apache
EXPLORING WHAT'S POSSIBLE

REF: OUTLAW STATE #6 / WELL PAD TOPO

THE OUTLAW STATE #6 LOCATED 990' FROM
 THE SOUTH LINE AND 1650' FROM THE EAST LINE OF
 SECTION 29, TOWNSHIP 17 SOUTH, RANGE 28 EAST.
 N.M.P.M., EDDY COUNTY, NEW MEXICO.

District I
 1625 N. French Dr., Hobbs, NM 88240
 Phone:(575) 393-6161 Fax:(575) 393-0720
District II
 811 S. First St., Artesia, NM 88210
 Phone:(575) 748-1283 Fax:(575) 748-9720
District III
 1000 Rio Brazos Rd., Aztec, NM 87410
 Phone:(505) 334-6178 Fax:(505) 334-6170
District IV
 1220 S. St Francis Dr., Santa Fe, NM 87505
 Phone:(505) 476-3470 Fax:(505) 476-3462

State of New Mexico
Energy, Minerals and Natural Resources
Oil Conservation Division
1220 S. St Francis Dr.
Santa Fe, NM 87505

Form APD Comments

Permit 190158

PERMIT COMMENTS

Operator Name and Address: APACHE CORP [873] 303 Veterans Airpark Lane Midland, TX 79705	API Number: 30-015-42556
	Well: OUTLAW STATE #006

Created By	Comment	Comment Date
CSHAPARD	Land s/S	8/6/2014

District I
 1625 N. French Dr., Hobbs, NM 88240
 Phone:(575) 393-6161 Fax:(575) 393-0720
District II
 811 S. First St., Artesia, NM 88210
 Phone:(575) 749-1283 Fax:(575) 748-9720
District III
 1000 Rio Brazos Rd., Aztec, NM 87410
 Phone:(505) 334-6178 Fax:(505) 334-6170
District IV
 1220 S. St Francis Dr., Santa Fe, NM 87505
 Phone:(505) 476-3470 Fax:(505) 476-3462

State of New Mexico
Energy, Minerals and Natural Resources
Oil Conservation Division
1220 S. St Francis Dr.
Santa Fe, NM 87505

Form APD Conditions

Permit 190158

PERMIT CONDITIONS OF APPROVAL

Operator Name and Address: APACHE CORP [873] 303 Veterans Airpark Lane Midland, TX 79705		API Number: 30-015-42556
		Well: OUTLAW STATE #006
OCD Reviewer	Condition	
CSHAPARD	Once the well is spud, to prevent ground water contamination through whole or partial conduits from the surface, the operator shall drill without interruption through the fresh water zone or zones and shall immediately set in cement the water protection string	